




Validation of a New North American Islet Donor Score for Donor Pancreas Selection and Successful Islet Isolation in a Medium-Volume Islet Transplant Center

Cell Transplantation
2019, Vol. 28(2) 185–194
© The Author(s) 2018
Article reuse guidelines:
sagepub.com/journals-permissions
DOI: 10.1177/0963689718816989
journals.sagepub.com/home/cll


Justyna E. Gołębowska^{1,2} , Piotr J. Bachul^{1,3}, Ling-jia Wang¹,
Sabrina Matosz¹, Lindsay Basto¹, Mark R. Kijek¹,
Natalie Fillman¹, Karolina Gołąb¹, Martin Tibudan¹,
Alicja Dębska-Ślizień², J. Michael Millis¹, John Fung¹,
and Piotr Witkowski¹ 

Abstract

The selection of optimal pancreas donors is one of the key factors in determining the ultimate outcome of clinical islet isolation. North American Islet Donor Score (NAIDS) allows for estimating the chance of the success of islet isolation. It was developed based on the data from over 1000 donors from 11 islet isolation centers and validated in the University of Alberta, Edmonton, on the cohort from the most active islet transplant center. Now we aimed to also validate it in our much less active program. Areas under the receiver operating characteristic curves (AUROCs) and logistic regression analyses were obtained to test if NAIDS would better predict successful islet isolation (defined as post-purification islet yield >400,000 islet equivalents (IEQ)) than previously described Edmonton islet donor score (IDS) and our modified version of IDS. We analyzed the donor scores with reference to 82 of our islet isolation outcomes. The success rate increased proportionally as NAIDS increased, from 0% success in NAIDS < 50 points to 40% success in NAIDS ≥ 80 points. AUROCs were 0.67 (95% confidence interval (CI) 0.55–0.79) for NAIDS, 0.58 (95% CI 0.44–0.71) for modified IDS, and 0.51 (95% CI 0.37–0.65) for IDS and did not differ significantly. However, based on logistic regression analyses, NAIDS was the only statistically significant predictor of successful isolation ($p = 0.01$). The main advantage of NAIDS is an enhanced ability to discriminate poor-quality donors than previously used scoring systems at University of Chicago, with 0% chance for success when NAIDS was <50 as compared with 40% success rate for IDS <50. NAIDS was found to be the most useful available tool for donor pancreas selection in clinical and research practice in our center, allowing for identification and rejection of poor-quality donors, saving time and resources.

Keywords

scoring system, islet isolation

Introduction

Pancreatic islet transplantation (ITx) is a therapeutic option for patients with “brittle” type 1 diabetes (T1DM) with the potential to improve metabolic control and prevent hypoglycemia. Currently, most patients require subsequent islet infusions to maintain long-term islet graft function and the beneficial effect of procedure-improved glucose control. The majority of patients (>90%) maintain at least partial islet function for over 5 years, some for over 10 years^{1–3}. Pancreatic islet mass, represented by islet equivalent (IEQ), is the most important parameter that correlates with clinical outcome after transplantation⁴. For this reason, it is the most

¹ Department of Surgery, University of Chicago, Chicago, IL, USA

² Department of Nephrology, Transplantology and Internal Medicine, Medical University of Gdańsk, Gdańsk, Poland

³ Department of Anatomy, Jagiellonian University Medical College, Krakow, Poland

Submitted: August 28, 2018. Revised: November 6, 2018. Accepted: November 9, 2018.

Corresponding Author:

Piotr Witkowski, The University of Chicago Medical Center, Department of Surgery, Division of Abdominal Organ Transplantation, 5841 South Maryland Avenue, MC5027, Room J-517, Chicago, IL 60637, USA.
Email: pwitkowski@surgery.bsd.uchicago.edu



Creative Commons Non Commercial CC BY-NC: This article is distributed under the terms of the Creative Commons Attribution-NonCommercial 4.0 License (<http://www.creativecommons.org/licenses/by-nc/4.0/>) which permits non-commercial use, reproduction and distribution of the work without further permission provided the original work is attributed as specified on the SAGE and Open Access pages (<https://us.sagepub.com/en-us/nam/open-access-at-sage>).

Table 1. The University of Chicago modification of Islet Donor Score (IDS).

Criterion	Allocated Points	Variable Range and Associated Score						Assigned Score-IDS
Age (years)	20	< 20 15	20-25 15	26-35 15	36-55 20	56-65 10	> 65 5	
BMI (kg/m ²)	15		< 20 5	20.1-25 10	25.1-30 12	30.1-35 15	> 35 12	
Cold ischemia time (hours)	15		< 3 12.5	3-8 15	8.1-12 10	> 12 5		
Blood work levels*	5		blood work normal 5	Abnormal Specific Biomarkers** 2	Abnormal Other Biomarkers*** 4	Both Abnormal Biomarkers 0		
Medical history	5		Clean 5	Cardiac arrests -15	Alcohol abuse -3	Arterial Hypertension -10		
Hospital stay (days)	5		< 2 5	2-4 3	5-7 2	>8 Days 0		
Vasopressors (# of drugs used)	5		None 5	Single 3	Double 0	Triple or more -5		
Cause of death	20		Anoxia/Hypoxia 0	Trauma with abdominal Injury 8	Trauma without abdominal Injury 10	Cerebral Vascular Event 20		
Procuring team	10				Own 10	Distant 5		
Sum total (Score)	100							0

*Refer to local reference values

** Specific biomarkers are defined as blood glucose, amylase, lipase. Abnormal value in Illinois is Lipase >190U/L, Amylase >200 U/L and Glucose >200 mg/dL (or >11.1 mmol/L)

*** Other biomarkers include AST, ALT, Creatinine, BUN. Abnormal value in Illinois is ALT >50IU/L, AST >40IU/L, Creatinine >1.38 mg/dL and BUN >24 mg/L.

important parameter in decision making for clinical islet transplantation. The selection of an optimal pancreas donor is one key factor in determining the ultimate outcome of human islet isolation. To facilitate the selection of a suitable organ, methods for the systematic, quantitative assessment of donor quality have been developed for both pancreas transplantation^{5,6} and ITx^{7,8}. In 2005, based on their own experience, the Edmonton group developed the Pancreas Donor Scoring for the purpose of islet transplantation (IDS)⁷. This model identified factors predictive of poor isolation outcomes, including donor factors as well as the physical properties of the pancreas. IDS ranges between 0 and 100 points; the higher the score, the higher the chance for islet isolation success. This success is defined as islet yield >300,000 IEQ. Since then, the scoring system has been adopted in many islet centers. At University of Chicago, we first internally modified IDS by excluding factors related to pancreas quality of preservation in order to enable early decision making based only on donor-derived data, and to avoid unnecessary organ procurement and shipment (Table 1; data unpublished). Later, we developed and validated a new pancreas scoring system (NAIDS) based on data from multiple islet centers⁸. We designed and conducted a retrospective, multicenter analysis of data from 11 islet isolation centers in North America. The data set from 1056 deceased donors was used for the development of the scoring

system to predict islet isolation success (defined as post-purification islet yield >400,000 islet equivalents). Next, NAIDS was validated on a cohort in the University of Alberta, Edmonton. It is crucial that limitations and applicability of assessment tools are recognized prior to their use in clinical practice; therefore, this study aimed to validate NAIDS externally, for use at our ITx program, which is much less active than Edmonton. To assess the utility of NAIDS we reviewed the outcomes of islet isolation procedures performed at our institution with reference to donor scores calculated according to IDS, our modification of IDS, and NAIDS.

Materials and Methods

Study Design

The charts of all deceased donors of pancreatic islets were retrospectively reviewed to assess their donor points according to the previously described Edmonton IDS, our modification of IDS, and NAIDS. The values of all islet donor scores were analyzed with reference to post-purification islet yield as expressed in IEQ. Successful islet isolation was initially defined as post-purification islet yield greater than 400,000 IEQ. We also analyzed scenarios in which successful isolation was considered either 350,000 IEQ or 300,000 IEQ. Cases other than successful islet isolation were labeled

as failed islet isolation. All donor data were entered in RED-Cap Project in the University of Chicago website before analysis.

Donor Selection

We pre-selected only brain dead; HIV, HBV (HBsAg, HBcAb) and HCV seronegative; NAT negative; and non CDC high-risk donors according to Centers for Disease Control⁹ with HbA1c below 6. Next, the primary investigator, a transplant surgeon, made a decision of acceptance or rejection based on modified IDS score, urgency of the transplant, surgical comfort of procuring surgeon, and expected cold ischemia time (CIT) below 12 h. Pancreata were then shipped to the islet isolation facility for processing, in cold (4°C) preservation solution SPS1 (Organ Recovery System, USA) or histidine-tryptophan-ketoglutarate (Köhler Chemie GmbH, Germany).

Islet Isolation

Islets were isolated in a good manufacturing practice (GMP) facility at the University of Chicago using the Ricordi standard semiautomated procedure¹⁰. Briefly, collagenase (Liberase; Roche, Indianapolis, IN) solution was infused through the main pancreatic duct, and the organ was digested in the Ricordi Chamber (Biorep Technologies, Miami, FL). After digestion, all tissue was collected, and islets were purified with a continuous density gradient in the COBE 2991 Cell Processor (Caridian BCT, Lakewood, CO). Islet yield was determined by manual count of dithizone-stained samples, converting the different islet sizes into IEQ¹¹.

Islet Donor Scores

IDS. This continuous model consists of nine donor factors (age, body mass index (BMI), cause of death, length of hospital stay, amylase/lipase activity, use of vasopressors, blood glucose, social and medical history), two transplant/procurement factors (CIT and procurement team), and seven pancreas physical properties (size, quality of flush, consistency, quality of procurement, damage, quality of packaging, fat content). The combination of the donor quality, transplant/procurement factors, and pancreas quality factors was given a numerical score from 0 to 100 to determine the quality of a pancreas for islet isolation. The higher the score, the higher the chance for islet isolation success, defined as islet yield >300,000 IEQ⁷.

Modified IDS. Our modification of the IDS model included only eight donor factors and a single procurement factor (Table 1). The pancreas quality factors were excluded to allow actual organ selection before the procurement. The range of donor points extends from 0 to 100 and as in IDS, the higher the score, the higher the chance for islet isolation success.

NAIDS. The NAIDS is a comprehensive scoring system. It consists of donor variables that predict islet isolation success with post-purification IEQ yielding over 400,000 out of a total of 100 points. A higher NAIDS corresponds to a higher success rate. Donor body surface area (BSA), BMI, and use of vasopressors were recognized as main donor variables included in the NAIDS. There were also two supplemental composite factors—favorable (based on serum Na and glucose, along with body weight (BW) and own organ-procuring team), and unfavorable (based on age, CIT, BW, serum HbA1c, liver enzymes, blood urea nitrogen (BUN) and amylase). BSA is given a maximum of 25 points, followed by BMI with 10 points. The absence of vasopressor usage is awarded a maximum of 15 points. If there are no unfavorable factors, 35 points are given. Favorable factors are given a maximum of 15 points (Table 2)⁸.

Statistical Analysis

Descriptive statistics are expressed as mean \pm standard deviation or median with interquartile range (IQR) as appropriate. Data were tested for normality. Receiver operating characteristic curves were made for IDS, modified IDS, and NAIDS values. The area under the receiver operating characteristic (AUROC) curves were compared between the donor scores to determine which of the indices detected the outcome (i.e., post-purification islet yield >400,000 IEQ or >350,000 IEQ or 300,000 IEQ) with greater discrimination. An AUROC \leq 0.5 was considered no discrimination, an AUROC between 0.7 and 0.8 was considered acceptable, an AUROC between 0.8 and 0.9 was considered excellent, and an AUROC > 0.9 was considered outstanding. Univariate logistic regression analysis was performed to identify the predictor of successful islet isolation among the donor scores. A p value of less than 0.05 was considered statistically significant. The statistical analyses were performed using Statistica 12 (StatSoft, Poland) software.

Results

Donor Characteristics

The data set consisted of 82 consecutive human islet isolation procedures performed at our institution between 2007 and 2011, 18 research-grade (to train new personnel and optimize the conditions) and 64 clinical-grade isolations (with the goal to transplant) (Table 6). Two research-grade isolations were excluded from the analysis due to technical failure and early termination of the cell processing.

The external validation cohort included a significantly lower number of patients than both the derivation and Edmonton validation cohorts. The average donor for this cohort was similar to the reference donor described in the NAIDS derivation model in terms of age, BMI, and gender, but there were significantly more deaths due to head trauma without abdominal injury. We also used pancreata procured

Table 2. North American Islet Donor Score.

BSA	$X < 1.54$ 0	$1.54 \leq X < 1.82$ 5	$1.82 \leq X < 2$ 10	$2 \leq X < 2.18$ 20	$2.18 \leq X$ 25 pts
Vasopressor		more than 2 0	double 3	single 10	none 15 pts
BMI	$X < 20.1$ 0	$20.1 \leq X < 28.1$ 2	$28.1 \leq X < 32.5$ 7	$32.5 \leq X < 52.0$ 10	$52.0 \leq X$ 0 pts
Unfavorable factors	Age (y) < 20, > 75 CIT (h) ≤ 2, > 17 Body weight (kg) < 55 HbA1c (%) > 6.5	ALT (U/L) > 1070 AST (U/L) > 580 BUN (mg/dL) ≥ 80 Amylase (U/L) > 1500		At least one 0	None 35 pts
Favorable factors	Body weight (kg) > 120 Own team procurement 130 < Na (mEq/L) < 160 Peak glucose (mg/dL) < 410	None 0	One 2	Two 7	More than 2 15 pts

by a distant team significantly more often. The donor demographics for this cohort and the cohort used to derive the NAIDS are shown in Table 3.

Donors were grouped into five strata depending on the total number of points achieved in each of the scoring systems. The distribution of results differed according to the scoring model used; that is, less than 4% of University of Chicago donors had ≥ 80 points in IDS, only 4.9% according to modified IDS in comparison to 30.5% of donors with ≥ 80 points when NAIDS was calculated. Examination of NAID scores showed that the organs utilized were similar between derivation and original validation cohort, with 51.6% and 56.4% of pancreata from donors with NAIDS above 60 points in the derivation and original validation cohort, respectively. However, analysis of NAIDS distribution in our center's cohort showed skewed scores, with few low-score donors and a preponderance toward a higher proportion of high NAID scores with 75.6% of scores above 60 points (Table 4).

Univariate Logistic Regression Analysis

Of the 82 analyzed cases, 25 (30.5%) were successful islet isolations. This rate was similar to the NAIDS derivation cohort, but lower than 50.5% (90/179) in the Edmonton validation cohort. Logistic regression confirmed that NAIDS was a statistical significant predictor of the isolation success defined as 400,000 IEQ with odds ratio (OR) of 1.05 (95% confidence interval (CI) 1.01–1.09) with $p = 0.01$, whereas IDS and modified IDS were not ($p = 0.83$ and 0.26, respectively). When the cut-off for isolation success was set as 350,000 and 300,000 IEQ the results were similar with OR of 1.04 (95% CI 1.01–1.07) with $p = 0.01$ and OR of 1.03 (95% CI 1.00–1.05) and $p = 0.03$ for NAIDS, respectively.

Success Rate Based on Various Donor Scores

The success rate increased proportionally as the NAIDS increased, from 0% success in NAIDS < 50 points (0/13) to 40.0% success (10/25) in NAID score ≥ 80 points. When the NAIDS was between 50 and 80 points, the chance for success was approximately 34% (15/44). Distribution of the success rate depending on the NAIDS in the University of Chicago cohort was similar to the distribution of the success rate in the Edmonton and multicenter derivation cohorts (Fig. 1). Distribution of the success rate for scores between 50 and 80 was similar for NAIDS and IDS. Similarly, when the total number of points exceeded 70, the chance for islet yield greater than 400 kIEQ was around 40% irrespective of the scoring system used. However, when NAIDS was < 50 there was 0% chance for success, while when IDS was < 50 there was still 40% chance of success with the threshold set at 400 kIEQ ($p = 0.02$). With the total number of points below 60, the difference in the number of successes between NAIDS and IDS was of borderline significance ($p = 0.09$).

We identified 32 isolations when the difference in scores, assuming pancreas from the same donor, between NAIDS and IDS was equal or greater than 19.5 points (e.g., NAIDS 84 points and IDS 64 points; NAIDS 47 points with IDS 81 points). These included 24 cases when NAIDS was greater and eight cases when IDS was higher. When NAIDS was greater than IDS then isolation success, defined as post-purification islet yield greater than 400,000 IEQ, was achieved in 11 out of 24 (46%) cases. In eight cases when IDS was at least 19.5 points greater than NAIDS, there were no successful isolations ($p = 0.029$).

Validation of the NAIDS

For validation of the NAIDS, we plotted the receiver operating characteristic curves using the multicenter derivation ($n = 1056$) and the University of Chicago validation

Table 3. Baseline Characteristics of the NAIDS Derivation ($n = 1056$) and External Validation ($n = 82$) Cohorts. (A) Continuous Variables, (B) Categorical Variables.

(A)				
	Derivation cohort		University of Chicago validation cohort	
	Mean \pm SD	Range	Mean \pm SD	Range
Age (year)	45.8 \pm 13.2	5–77	43.0 \pm 13.6	1–71
Height (cm)	171.8 \pm 10.6	125–210	173.0 \pm 18.3	60–196
Body weight (kg)	85.6 \pm 21.3	25–200	97.9 \pm 26.1	8–180
Body mass index (kg/m ²)	28.9 \pm 6.5	13.3–66.6	32.1 \pm 6.5	17.6–56.9
Body surface area (m ²)	2.01 \pm 0.28	0.97–3.21	2.2 \pm 0.4	0.37–3.1
Cold ischemia time (h)	9.4 \pm 4.1	0.67–23.9	9.27 \pm 3.4	2.78–18.7
Amylase (U/L)	136 \pm 206	5–1953	125.7 \pm 172.4	10–999
Lipase (U/L)	78 \pm 125	3–1186	88.8 \pm 164.3	3–964
AST (U/L)	101 \pm 229	5–4092	178.9 \pm 390.3	16–2266
ALT (U/L)	81 \pm 181	4–3268	123.6 \pm 274.0	12–1984
HbA1c (%)	5.6 \pm 0.7	3.5–14.6	5.3 \pm 0.5	3.5–6.4
Peak glucose (mg/dl)	235 \pm 83	79–982	257.0 \pm 92.1	144–627
Lowest glucose (mg/dl)	119 \pm 36	15–311	108.2 \pm 27.7	17–221
BUN (mg/dl)	19 \pm 12	2–105	22.8 \pm 13.2	8–80
Creatinine (mg/dl)	1.6 \pm 2.5	0.3–75	1.65 \pm 1.02	0.6–6.7
Na (mEq/L)	150.7 \pm 9.8	125–189	157.0 \pm 10.2	136–194

(B)		
Variables	Derivation cohort	University of Chicago validation cohort
	n (%)	n (%)
Gender		
Male	586 (55.5)	54 (65.9)
Female	470 (44.5)	28 (34.1)
Cause of death		
Cerebrovascular accident	590 (55.9)	42 (51.2)
Anoxia	136 (12.9)	6 (7.3)
Head trauma with abdominal injury	23 (2.2)	1 (1.2)
Head trauma without abdominal injury	304 (28.8)	32 (39)
Procurement team		
Own	247 (23.4)	8 (9.8)
Distant	808 (76.6)	74 (90.2)
Hospital stay		
<2 days	247 (23.4)	3 (3.7)
2–4 days	604 (57.2)	55 (67)
5–7 days	133 (12.6)	15 (18.3)
>7 days	64 (6.1)	9 (11)
Vasopressor use		
None	152 (14.4)	9 (11)
Single	401 (38.0)	28 (34.1)
Double	278 (26.3)	34 (41.5)
Triple	153 (14.5)	11 (13.4)
More than three	47 (4.5)	–
Medical history*		
Alcohol abuse	152 (14.4)	17 (20.7)
Hypertension	362 (34.3)	36 (43.9)
Cardiac arrest	190 (18.0)	14 (17.1)
Absence of above three	479 (45.4)	29 (35.4)

cohort data ($n = 82$) (Figure 4). The AUROC for validation cohort data for isolation success defined as post-purification islet yield greater than 400,000 IEQ was 0.67 (95%

CI 0.551–0.79) (Table 5, Fig. 2), which was not significantly different ($p = 0.39$) from that obtained from the development cohort. Furthermore, a similar proportional increase in a

Table 4. The Characteristics of Utilized Pancreata.

NAID score	Derivation cohort (n = 1056)	Edmonton validation cohort (n = 179)	University of Chicago validation cohort (n = 82)
x ≥ 80	12.3%	12.8%	30.5%
80 > x ≥ 70	19.4%	24%	30.5%
70 > x ≥ 60	19.9%	19.6%	14.6%
60 > x ≥ 50	25.3%	30.7%	8.5%
x < 50	23.1%	12.8%	15.9%

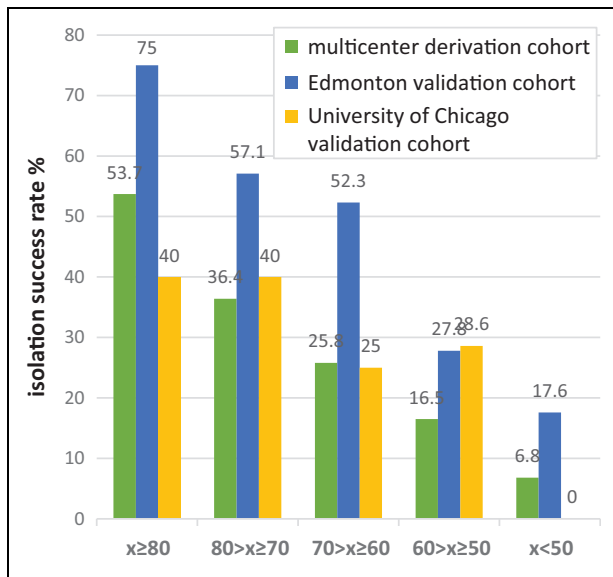


Fig. 1. Distribution of the isolation success rate (post-purification islet yield greater than 400,000 IEQ) depending on NAID score in the multicenter derivation cohort (n = 1056), Edmonton validation cohort (n = 179), and University of Chicago (n = 82).

success rate was observed as the NAIDS increased in the validation cohort (Fig. 3). AUROCs for modified IDS and IDS were 0.58 (95% CI 0.44–0.71) and 0.51 (95% CI 0.37–0.65), respectively. However, the difference between the AUROCs for various scoring systems did not reach statistical significance. The results were comparable when the threshold for isolation success was set at either 350 kIEQ or 300 kIEQ.

Discussion

The outcome of human islet isolation depends on donor-, pancreas-, and isolation-related variables^{12,13}. Despite improvements and standardization of isolation procedures, the outcome of human islet isolation remains unpredictable and highly variable. The most experienced centers are only able to obtain a sufficient islet yield from 30–50% of isolation procedures⁸. A careful selection of pancreata for processing should allow higher transplant efficiencies.

Table 5. The Areas Under Receiver Operating Curves (AUROC) of the NAID, Modified ID, and ID Scores for the Detection of Isolation Success (n = 82).

	AUROC	95% CI	p value
Islet isolation success defined as total post-purification IEQ > 400,000			
NAIDS	0.67	(0.55–0.79)	0.005
modified IDS	0.58	(0.44–0.71)	0.26
IDS	0.51	(0.37–0.65)	0.92
Islet isolation success defined as total post-purification IEQ > 350,000			
NAIDS	0.66	(0.54–0.78)	0.007
modified IDS	0.54	(0.41–0.67)	0.54
IDS	0.49	(0.36–0.62)	0.83
Islet isolation success defined as total post-purification IEQ > 300 000			
NAIDS	0.62	(0.5–0.74)	0.05
modified IDS	0.54	(0.41–0.67)	0.57
IDS	0.5	(0.36–0.63)	0.94

AUROC: area under receiver operating curve; CI: confidence interval; IDS: Islet Donor Score; NAIDS: North American Islet Donor Score

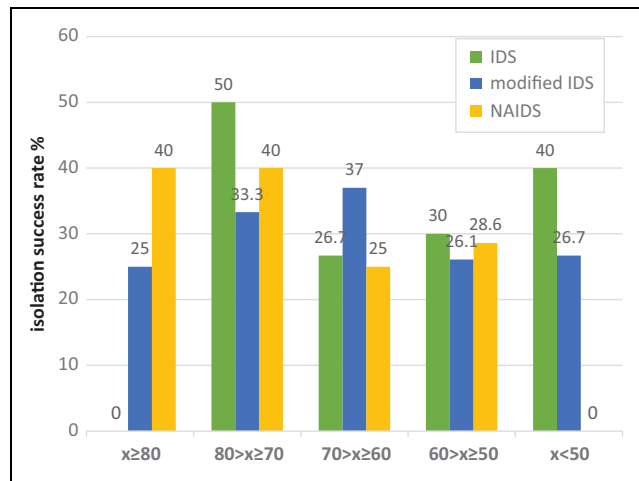


Fig. 2. Distribution of the isolation success (postpurification islet yield greater than 400,000 IEQ) rate according to various donor scores (IDS, modified IDS and NAIDS) in University of Chicago validation cohort (N = 82).

Therefore, a reliable method of systematic, quantitative assessment of donor quality is highly desired. Since its introduction in 2005, IDS has been the mainstay of donor evaluation for the isolation of pancreatic islets. Once the clinical utility of a new donor score is established, internal and external validation is required prior to the implementation into clinical practice to assess the applicability in a particular context. The objective of this single-center study was to compare IDS, our modification of IDS, and recently introduced NAIDS in our own medium-volume center in their

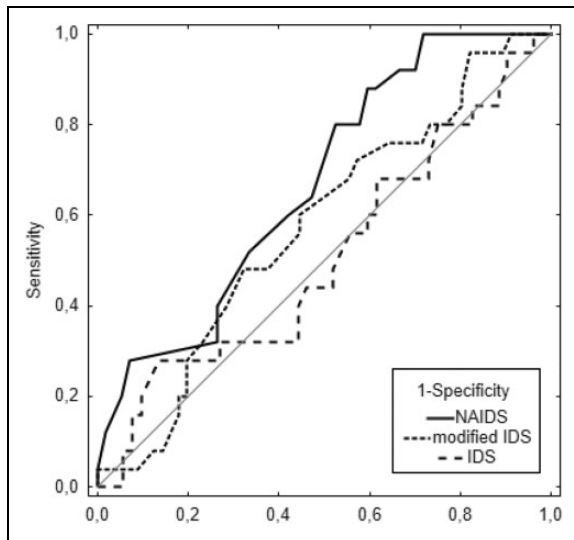


Fig. 3. Receiver operating characteristics (ROC) curves of the NAIDS, modified IDS, and old IDS in the University of Chicago validation cohort for the identification of islet isolation success defined as total post-purification IEQ > 400,000.

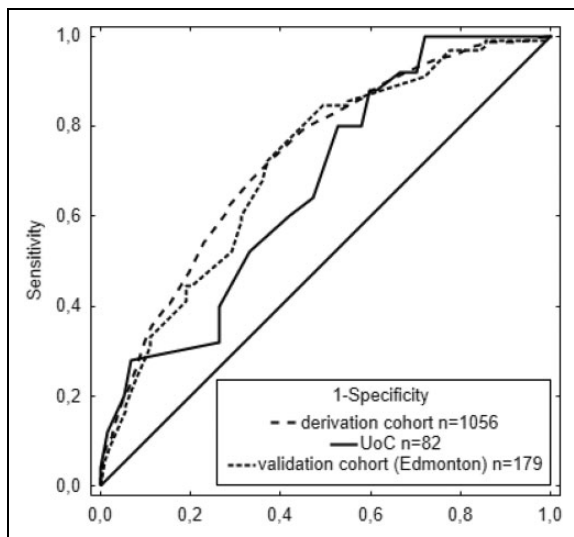


Fig. 4. Receiver operating characteristics (ROC) curves of the NAIDS in original derivation cohort ($n = 1056$), original derivation cohort (Edmonton) ($n = 179$), and the University of Chicago validation cohort ($n = 82$) for the identification of islet isolation success defined as total post-purification IEQ > 400,000.

ability to facilitate recognition of a suitable pancreas donor among all reported donors.

NAIDS incorporates five criteria (including two composite ones) for the estimation of pancreas weight and quality. The rationale for the choice and arrangement of these variables has been described in detail in the original NAIDS development study⁸. Briefly, 50 out of a maximum of 100 points are assigned for BSA, BMI, and the number of vasopressors used in the donor. BMI has long been shown by

Table 6. University of Chicago Isolation Characteristics ($n = 82$).

	Mean \pm SD	Range
Pre-purification suspension total IEQ	391,534 \pm 195,932	41,701–1,204,503
Total post-purification IEQ	322,500 \pm 172,827	16,202–808,633
Total infused IEQ*	464,340 \pm 119,717	269,228–686,988
Total tissue vol [ml] – calculated*	5.67 \pm 2.35	2–10
Total purity* [%]	70.32 \pm 16.51	39–95

*data for 45 infused final islet preparations

** endotoxin level was < 5 Eu/kg in all cases

many authors to positively correlate with islet isolation outcome^{13–18}. Recently, a positive association has also been found between islet size, islet insulin content (normalized for size), basal or stimulated insulin secretion, and BMI¹⁹. However, on the other hand, Olehnik and colleagues observed high inter-individual heterogeneity of beta-cell mass, with no clinically significant correlation with BMI. BMI is used as a clinical indicator of obesity, but it in fact does not differentiate between adipose tissue and muscle mass²⁰. This could, at least in part, explain the inter-individual heterogeneity of beta-cell mass irrespective of BMI value. It is also possible that the composition of extracellular matrix structure in obese donors favors liberating islets from exocrine tissues and therefore results in a higher islet yield, when the islet number is in fact similar or lower. Kin et al. reported that BW and BSA were more strongly correlated with pancreas weight²¹. To ensure a more accurate estimation of isolation outcomes, NAIDS uses combined variables of BSA, BMI, and BW, for which positive correlation with pancreas size and islet yield were previously described^{8,22}. According to NAIDS, the lack of donor vasopressor treatment predicts a favorable outcome. However, conflicting results regarding the influence of vasopressor use in donors on the isolation outcomes have been reported with no effect^{4,18}, elevated yield¹⁶, or reduced islet yield¹⁴. The need for vasopressors reflects the cardiovascular status of the multiorgan donor with unsatisfactory tissue perfusion and progressive organ damage, including the pancreas. Ischemia of the pancreatic tissue leads to more extensive islet cell damage or death prior to or during the very stressful islet isolation process, exposing islets to mechanical (shaking, spinning) and enzymatic injury during the digestion phase. The effectiveness of digestion is more related to the enzyme quality, as well as donor age, which affects the extracellular matrix composition including the type of collagen present, rather than the size of the pancreas²³. For that reason, young donors (i.e., below 20 years of age) are not preferred due to poor results of the digestion phase²³.

NAIDS contains almost the same variables as the previous IDS; however, the number of points assigned for each factor and the formula of the score calculation is different.

Therefore, there may be a substantial difference in the distribution of results according to scoring model used; that is, one donor could have been awarded a significantly lower number of points in one of the scoring system as compared with another, despite very similar donor data. AUROC was higher for NAIDS than for IDS, although for our relatively low number of cases the difference was not statistically significant. Even though in our validation cohort the AUROC for the identification of isolation success did not reach the threshold of 0.70 typically considered useful for clinical decision making, it still performed best out of the three scoring systems. Still, there was a clean-cut trend when analyzing the success rate based on various donor scores. We noticed that when the NAIDS is below 50, the chance of success was 0%, so it is not worth accepting and processing the pancreas for islet isolation; however, we can still consider isolating the islets when the score is between 50 and 80 as the chance of success is around 30%. With a score over 80 and the chance of success around 40%, we should proceed with the islet isolation in our center. The rate of successful isolations was similar irrespective of the scoring system used whenever the sum of points exceeded 70. Our results indicate that with the higher total number of points achieved, either all scoring systems are equally useful or we were unable to show the difference due to a small number of cases included and a variety of factors affecting isolation outcomes, which are not included in any of the scoring systems.

The main advantage in guiding clinical decisions using NAIDS over IDS and modified IDS is that it was more effective in identification of donors who would most likely fail. So if we rejected pancreata based on donor IDS or modified IDS, we would reject potentially good organs. On the other hand, pancreas rejection based on NAIDS improves the cost-effectiveness of isolation process, saving time and valuable resources. In cases when the use of different scoring systems generates divergent results, NAIDS better reflects the pancreas donor quality.

The critical message of our study is that NAIDS allows assessment of the pancreas donor quality prior to processing, not only in the most experienced center—Edmonton—but also in smaller centers. We externally validated it. NAIDS assists in making a difficult decision—whether to accept donor and pancreas for processing or reject due to low chance for success—easier. The cost of each islet isolation is around \$20,000 in the US, in addition to the cost of the GMP facility maintenance and an on-call isolation team 24/7. From the economic perspective, one can assume that it would be optimal to wait for a perfect donor (NAIDS > 80) in order to maximize the chance for successful isolation and not to waste time and money on isolation failures. However, such strategy may result in rare pancreas processing and inefficiency due to high cost of the team and facility maintenance without productive work. Each islet center needs to develop its own donor selection strategy and islet isolation rate per month based on overall pancreas donor availability, which depends on the local, regional, or national efficiency

of procurement. It also depends on activity of the pancreas transplant programs, or competitive islet transplant centers. Overall population BMI might be higher in the USA compared with European countries, which can relatively increase availability of higher NAIDS donors in the USA compared with other countries. Between January 2013 and April 2015, we participated in a multicenter trial with competitive enrollment, so as a center we were continuously fully active, ready to accept pancreata for processing. Over a 2-year period, we performed 40 islet isolations with an overall success rate of 50% (20/40) with IEQ > 400,000, which resulted in clinical transplants in our 12 patients. Among those, there were 13 (32.5%) donors with NAIDS \geq 80, 19 (47.5%) with NAIDS \geq 60, and 8 (20%) below 60. The success rate was 62%, 50%, and 25%, respectively for the NAIDS groups. Taking into consideration all the above factors, our previous experience, and data with different scoring systems, we decided not to process pancreata with NAIDS below 60.

Of note, there was a substantial difference in the percentage of successful isolations between the Edmonton isolation cohort and the University of Chicago isolation cohort when donors were stratified according to NAIDS. The success of the isolation depends on three main components: donor quality, pancreas procurement quality, and experience and efficiency of the islet isolation team. NAIDS takes into consideration only two of them: donor characteristic and procurement team. Islet isolation is still a very complex process and, despite standardization, decisions made based on the experience of the leader of the isolation team played very important role in the ultimate outcome. Poor decisions may lead to failure despite processing a perfect pancreas. The Edmonton group has the most experienced team and islet isolation system based on thousands of isolations during the last 20 years. For that reason, the results of processing the same quality pancreas are overall better there than in our and other centers. In addition, most pancreata are procured for us by distant teams with different levels of experience in pancreas procurement. Very poor procurement with pancreas injury, ischemia, poor perfusion, and inefficient organ cooling or preservation may remain undetectable by the receiving islet center but severely compromise pancreas quality, and may completely preclude success of islet isolation. This most likely also affected our outcomes. Again, there is much more experience with pancreas procurement in Edmonton and Canada. Altogether, despite the substantial difference in success rates in outcomes between our center and Edmonton in respective ranges of scoring systems, NAIDS allowed us to properly stratify the quality of the pancreas donor, especially to identify poor-quality donors and to avoid many isolation failures.

Several shortcomings of this study should be mentioned. This was a small study restricted to a single center with particular strategies for donor selection and islet isolation. We believe that we could have demonstrated better efficacy of NAIDS in an adequately powered study with a significantly larger number of cases included. Data were collected

prospectively and analyzed retrospectively with no actual donor selection decisions based on only estimation of NAIDS. Despite these limitations, we believe that our study is of importance. This study is the first external validation that assesses the performance of NAIDS in a population external to and independent from the original derivation and validation cohorts.

In conclusion, NAIDS allows for acceptable correlation of the score with the outcome of the islet isolation. It allows us to tailor donor selection strategy, excluding donors with minimal chance for success with a score below 50 and accept remaining pancreata with a chance of success of 30–40%. Validation of NAIDS against data from our center shows that it is currently the best available tool for donor pancreas selection in clinical and research practice, allowing for adjusting the donor selection strategy to the center's logistic and financial resources.

Ethical Approval

This study protocol was reviewed and approved by the Institutional Review Board (IRB) of the Division of Biological Sciences at the University of Chicago and was identified as nonhuman subject research, as determined by Federal Regulations.

Statement of Human and Animal Rights

This article does not contain any studies with human or animal subjects.

Statement of Informed Consent

There are no human subjects in this article and informed consent is not applicable.



Declaration of Conflicting Interests

The author(s) declared no potential conflicts of interest with respect to the research, authorship, and/or publication of this article.

Funding

The author(s) disclosed receipt of the following financial support for the research, authorship, and/or publication of this article: This work was supported by US Public Health Service Grant DK-020595 to the University of Chicago Diabetes Research and Training Center as well as Illinois Department of Public Health Grant "Pancreatic Islet Transplantation."

ORCID iD

Justyna Gołębiewska  <https://orcid.org/0000-0001-5346-8369>
Piotr Witkowski  <https://orcid.org/0000-0002-4459-6673>

References

- Warnock GL, Thompson DM, Meloche RM, Shapiro RJ, Ao Z, Keown P, Johnson JD, Verchere CB, Partovi N, Begg IS, Fung M, Kozak SE, Tong SO, Alghofaili KM, Harris C. A multi-year analysis of islet transplantation compared with intensive medical therapy on progression of complications in type 1 diabetes. *Transplantation*. 2008;86(12):1762–1766.
- Alejandro R, Barton FB, Hering BJ, Wease S; Collaborative Islet Transplant Registry Investigators. 2008 update from the collaborative islet transplant registry. *Transplantation*. 2008; 86(12):1783–1788.
- Shapiro AM, Ricordi C, Hering BJ, et al. International trial of the Edmonton protocol for islet transplantation. *N Engl J Med*. 2006;355(13):1318–1330.
- Balamurugan AN, Naziruddin B, Lockridge A, et al. Islet product characteristics and factors related to successful human islet transplantation from the Collaborative Islet Transplant Registry (CITR) 1999–2010. *Am J Transplant*. 2014;14(11): 2595–2606.
- Axelrod DA, Sung RS, Meyer KH, Wolfe RA, Kaufman DB. Systematic evaluation of pancreas allograft quality, outcomes and geographic variation in utilization. *Am J Transplant*. 2010; 10(4):837–845.
- Vinkers MT, Rahmel AO, Slot MC, Smits JM, Schareck WD. How to recognize a suitable pancreas donor: a Eurotransplant study of preprocurement factors. *Transplant Proc*. 2008;40(5): 1275–1278.
- O’Gorman D, Kin T, Murdoch T, Richer B, McGhee-Wilson D, Ryan EA, Shapiro JA, Lakey JR. The standardization of pancreatic donors for islet isolations. *Transplantation*. 2005; 80(6):801–806.
- Wang LJ, Kin T, O’Gorman D, et al. A Multicenter study: North American Islet Donor Score in donor pancreas selection for human islet isolation for transplantation. *Cell Transplant*. 2016;25(8):1515–1523.
- Guidelines for preventing transmission of human immunodeficiency virus through transplantation of human tissue and organs. Centers for Disease Control and Prevention. *MMWR Recomm Rep*. 1994;43(RR-8):1–17.
- Ricordi C, Lacy PE, Finke EH, Olack BJ, Scharp DW. Automated method for isolation of human pancreatic islets. *Diabetes*. 1988;37(4):413–420.
- Kin T. Islet isolation for clinical transplantation. *Adv Exp Med Biol*. 2010;654:683–710.
- Yeh CC, Wang LJ, McGarrigle JJ, Wang Y, Liao CC, Omami M, Khan A, Nourmohammadzadeh M, Mendoza-Elias J, McCracken B, Marchese E, Barbaro B, Oberholzer J. Effect of manufacturing procedures on human islet isolation from donor pancreata standardized by the North American Islet Donor Score. *Cell Transplant*. 2017;26(1): 33–44.
- Hilling DE, Bouwman E, Terpstra OT, Marang-van de Mheen PJ. Effects of donor-, pancreas-, and isolation-related variables on human islet isolation outcome: a systematic review. *Cell Transplant*. 2014;23(8):921–928.
- Lakey JR, Warnock GL, Rajotte RV, Suarez-Alamazor ME, Ao Z, Shapiro AM, Kneteman NM. Variables in organ donors that affect the recovery of human islets of Langerhans. *Transplantation* 1996;61(7):1047–1053.
- Nano R, Clissi B, Melzi R, Calori G, Maffi P, Antonioli B, Marzorati S, Aldrighetti L, Freschi M, Grochowiecki T, Socci C, Secchi A, Di Carlo V, Bonifacio E, Bertuzzi F. Islet isolation for allotransplantation: variables associated with successful islet yield and graft function. *Diabetologia*. 2005;48(5): 906–912.

16. Ponte GM, Pileggi A, Messinger S, Alejandro A, Ichii H, Baidal DA, Khan A, Ricordi C, Goss JA, Alejandro R. Toward maximizing the success rates of human islet isolation: Influence of donor and isolation factors. *Cell Transplant*. 2007;16(6):595–607.
17. Wang Y, Daneilson KK, Ropski A, Harvat T, Barbaro B, Paushter D, Qi M, Oberholzer J. Systematic analysis of donor and isolation factor's impact on human islet yield and size distribution. *Cell Transplant*. 2013;22(12):2323–2333.
18. Kaddis JS, Danobeitia JS, Niland JC, Stiller T, Fernandez LA. Multicenter analysis of novel and established variables associated with successful human islet isolation outcomes. *Am J Transplant*. 2010;10(3):646–656.
19. Henquin JC. Influence of organ donor attributes and preparation characteristics on the dynamics of insulin secretion in isolated human islets. *Physiol Rep*. 2018;6(5):e13646.
20. Olehnik SK, Fowler JL, Avramovich G, Hara M. Quantitative analysis of intra-and inter-individual variability of human beta-cell mass. *Sci Rep*. 2017;7(1):16398.
21. Kin T, Murdoch TB, Shapiro AM, Lakey JR. Estimation of pancreas weight from donor variables. *Cell Transplant*. 2006;15(2):181–185.
22. Wang LJ, Cochet O, Gołab K, Wang XJ, Tibudan M, Grzanka J, Savari O, Grose R, Millis MJ, Witkowski P. Donor height in combination with donor score improves donor selection for clinical islet transplantation. *Transplant Proc*. 2014;46(6):1972–1974.
23. Meier RP, Sert I, Morel P, Muller YD, Borot S, Badet L, Toso C, Bosco D, Berney T. Islet of Langerhans isolation from pediatric and juvenile donor pancreases. *Transpl Int*. 2014;27(9):949–955.