



# Markers of proliferation and invasiveness in somatotropinomas

Markery proliferacji i inwazyjności w guzach przysadki wydzielających hormon wzrostu

Agata Baldys-Waligorska<sup>1</sup>, Iga Wierzbicka<sup>2</sup>, Grzegorz Sokolowski<sup>1</sup>, Dariusz Adamek<sup>3</sup>, Filip Golkowski<sup>4</sup>

<sup>1</sup>Department of Endocrinology, Faculty of Medicine Jagiellonian University, Medical College

<sup>2</sup>Chair of Gastroenterology, Hepatology and Infectious Diseases, Faculty of Medicine Jagiellonian University, Medical College

<sup>3</sup>Chair of Patomorphology, Faculty of Medicine Jagiellonian University, Medical College

<sup>4</sup>Department of Endocrinology and Internal Medicine, Faculty of Medicine and Health Sciences, AFM Krakow University

## Abstract

**Introduction:** In the search for markers of invasiveness of pituitary adenomas, we studied the expression of Ki-67 antigen, TOPO 2A (topoisomerase 2 alpha), AIP (Aryl Hydrocarbon Receptor-Interacting Protein), and VEGF (Vascular Endothelial Growth Factor) in somatotropinomas.

**Material and methods:** We retrospectively studied a group of 31 patients who underwent pituitary tumour surgery. Expression of Ki-67, TOPO 2A, AIP, and VEGF in surgical specimens was determined by immunohistochemistry. Relations between quantitatively determined markers and clinical symptoms, tumour features, and MR imaging, were analysed. Acromegaly was confirmed by hormonal tests in all patients studied. Local invasiveness (cavernous sinus penetration, optic chiasm compression or suprasellar extension) was observed in 18/31 patients (58.1%).

**Results:** Ki-67 was expressed in 77.4%, TOPO 2A in 87.1%, AIP in 83.8%, and VEGF in 87.1% of 31 cases of somatotropinoma. Median values of Ki-67, TOPO 2A, AIP, and cytoplasmic VEGF indices, were 1.2% [IQR = 2.2], 1.5% [IQR = 1.6], 21.26% [IQR = 20.1], and 20.4% [IQR = 15.4], respectively.

Ki-67, TOPO 2A, AIP, and VEGF expression was not correlated with age nor with patient gender ( $p > 0.05$ ). Only Ki-67 and TOPO 2A correlated with tumour size (for Ki-67:  $r = 0.42$ ,  $p = 0.025$ ; for TOPO 2A:  $r = 0.53$ ,  $p = 0.003$ ). Ki-67 and TOPO 2A levels were significantly higher in invasive compared to noninvasive somatotropinomas (Ki-67 mean values:  $1.85 \pm 1.33\%$  vs.  $0.95 \pm 1.07\%$ ,  $p = 0.024$ ; TOPO 2A mean values:  $2.19 \pm 1.63\%$  vs.  $1.45 \pm 1.23\%$ ,  $p = 0.011$ ).

**Conclusions:** Ki-67, TOPO 2A, AIP, and VEGF were expressed in over 70% of all somatotropinomas. Only Ki-67 and TOPO 2A expression correlated with tumour size and tumour invasiveness. (*Endokrynol Pol* 2018; 69 (2): 182–189)

**Key words:** pituitary adenoma, markers of proliferation, Ki-67, TOPO 2A, AIP, VEGF

## Streszczenie

**Wstęp:** W poszukiwaniu markerów inwazyjności gruczolaków przysadki badano ekspresję antygenu Ki-67, TOPO 2A (*topoisomerase 2 alpha*), AIP (*Aryl Hydrocarbon Receptor-Interacting Protein*) oraz VEGF (*Vascular Endothelial Growth Factor*) w guzach wydzielających hormon wzrostu.

**Materiał i metody:** Badano retrospektywnie grupę 31 pacjentów, operowanych z powodu guza przysadki. Ekspresję Ki-67, TOPO 2A, AIP oraz VEGF badano immunohistochemicznie w tkankach uzyskanych chirurgicznie. Analizowano relacje między ilościową ekspresją markerów a objawami klinicznymi, cechami guza i obrazem MR. Testami hormonalnymi potwierdzono akromegalię u wszystkich badanych pacjentów. Miejscową inwazyjność, zdefiniowaną jako naciekanie zatoki jamistej, kompresję skrzyżowania wzrokowego, wzrost nadsiodłowy guza obserwowano u 18/31 (58,15) pacjentów.

**Wyniki:** Ekspresję Ki-67 stwierdzono w 77,4%, TOPO 2A w 87,1%, AIP w 83,8%, oraz VEGF w 87,1% przypadków samatotropinoma ( $n = 31$ ). Wartości median indeksów Ki-67, TOPO 2A, AIP i cytoplazmatycznego VEGF wynosiły 1,2% [IQR = 2,2], 1,5% [IQR = 1,6], 21,26% [IQR = 20,1] i 20,4% [IQR = 15,4], odpowiednio. Indeksy Ki-67, TOPO 2A, AIP i VEGF nie korelowały z wiekiem i płcią pacjentów ( $p > 0,05$ ). Tylko Ki-67 i TOPO 2A korelowały z wielkością guza (dla Ki-67:  $r = 0,42$ ,  $p = 0,025$ ; dla TOPO 2A:  $r = 0,53$ ,  $p = 0,003$ ). Indeksy Ki-67 oraz TOPO 2A były znamienne wyższe w guzach inwazyjnych w porównaniu z guzami nieinwazyjnymi (średnie Ki-67:  $1,85 \pm 1,33\%$  vs  $0,95 \pm 1,07\%$ ,  $p = 0,024$  oraz średnie TOPO 2A:  $2,19 \pm 1,63\%$  vs  $1,45 \pm 1,23\%$ ,  $p = 0,011$ ).

**Wnioski:** Ekspresję Ki-67, TOPO 2A, AIP i VEGF stwierdzono w ponad 70% wszystkich samatotropinoma. Tylko ekspresja Ki-67 oraz TOPO 2A korelowała z wielkością guza i jego inwazyjnością. (*Endokrynol Pol* 2018; 69 (2): 182–189)

**Słowa kluczowe:** gruczolak przysadki, markery proliferacji, Ki-67, TOPO 2A, AIP, VEGF

## Introduction

Somatotropinomas form 15–20% of all pituitary adenomas (PAs). The estimated frequency of acromegaly is

50–70 cases/million [1, 2]. Although mainly benign, PAs with invasive growth (30–45%), recurrence, resistance to multimodal treatment, and “atypical” morphologic features, are considered as being clinically aggressive [3, 4].



Dr hab. n. med. Agata Baldys-Waligorska, Department of Endocrinology, Faculty of Medicine Jagiellonian University, Medical College, Mikołaja Kopernika 17, 31-501 Krakow, Polska; tel: +48 12 424 7519; fax: +48 12424 7399; e-mail: awalig@cm-uj.krakow.pl

However, their invasiveness is not clearly defined in WHO 2004 classification, which distinguishes only between typical and atypical adenomas (characterised by invasive growth, increased mitotic index, Ki-67 > 3%, and extensive nuclear expression of p53), and carcinomas [5–7].

Markers of proliferation and angiogenesis, overexpression of which was found in PAs, are potential indicators of tumour behaviour. Apart from the well-documented Ki-67, TOPO 2A (topoisomerase 2A), AIP (Aryl Hydrocarbon Receptor-Interacting Protein), and VEGF (Vascular Endothelial Growth Factor) have been suggested.

Ki-67 is a nuclear antigen expressed in all cell cycle phases, except G<sub>0</sub>; therefore, it is recognised as a proliferation marker. In pituitary tumours, Ki-67 indices may vary between < 1% and 23%, and do not correlate with tumour size [8]. A high Ki-67 index, as a marker of proliferation in atypical adenomas, does not appear to be reliable in predicting tumour recurrence [7–9].

TOPO 2A is one of the key enzymes in DNA replication and cell division [10], indicating rapid cell proliferation in many tumours [11–13]. In PAs, strong correlation between MIB1 and TOPO 2A expression was found [13].

AIP, encoded by a suppressor gene, is present in the nucleus and cytoplasm of many human tissues, e.g. heart, brain, or tonsils. AIP is involved in many, but not fully understood, cellular pathways [15]. Germline mutations of AIP are associated with familial isolated pituitary adenoma (FIPA) secreting hGH and/or PRL, found in young patients [16]. There are no somatic AIP mutations [17]. Mutant AIP loses the ability to reduce cell proliferation. AIP expression has also been shown to be a predictor of response to octreotide LAR (SSLAR) therapy, independently of somatostatin receptor type 2 (SSTR2) expression [18].

VEGF is an angiogenic factor expressed in the cytoplasm and nucleus in many solid tumours, stimulating cell proliferation and migration, increasing vascular permeability, being associated with the development of metastases and poor prognosis [19]. However, the role of angiogenesis in the pituitary is not clear as PAs are less vascularised compared to other tumours and to the normal pituitary gland. Higher VEGF expression in PAs than in normal tissue has been shown [20]; however, the results are not conclusive as different methods were used. VEGF is presumed to be a biomarker of pituitary neoplasms [8, 16].

Prediction of pituitary tumour behaviour and disease recurrence after neurosurgery is still a challenge. To treat patients more effectively, optimal and standardised markers of invasiveness and proliferation of PAs are being sought. Selection of patients with aggressive tumours based on immunohistochemistry

and molecular studies is essential for individualised treatment. Therefore, in this work we studied the correlation of selected markers with tumour invasiveness, progression, and recurrence.

## Materials and methods

We retrospectively studied clinical, histopathology, and immunohistochemistry records of 31 patients of our Clinic of Endocrinology, who underwent pituitary surgery (transphenoidal resection and/or craniotomy, with 42% of patients successfully operated), between 1997 and 2008, followed up for 24 and 36 months. Eleven patients were treated with SSLAR before surgery. The PA diagnosis was based on clinical, biochemical, and radiological data, confirmed by surgery and histopathology examinations. Table I presents our patient characteristics.

Tumour size, defined as its largest dimension and its relation to adjacent tissues, was evaluated by 1.5 T MR images obtained prior to surgery, 12 months, and 24–36 months after surgery. Tumour invasiveness was defined according to radiological criteria of Knosp [21] and Zada [22] and surgeon descriptions, as given in patient records. Recurrence was defined as a new lesion or enlargement of residual pituitary adenoma in MRI after surgery.

The surgical specimens were routinely processed, fixed in neutral buffered formalin, embedded in paraffin, cut into 4 μm-thick slides, and stained with H-E. Specific primary antibodies (Dako, Glostrup, Denmark) were used against pituitary hormones: ACTH, GH, PRL, TSH, LH, and FSH.

For immunohistochemistry (IHC), sections were incubated with the following antibodies: primary mouse monoclonal antibody Ki-67, clone MIB-1 antibody (Dako, M7240, in optimum dilution 1:25), Novocastra primary mouse monoclonal antibody Topoisomerase 2A, clone 3F6 (NCL-TOPO 2A, Leica Biosystems, 1:100), primary mouse monoclonal antibody AIP, clone LS-B227 (LSBio, 1:300), and primary rabbit monoclonal antibody VEGF, clone SP28 (Thermo Fisher Scientific, 1:100). Manufacturer's recommendations were followed for each antibody. Control of specificity of the primary antibody, and positive/negative control tests were performed according to the manufacturer's instructions.

Immunostained sections were evaluated by optical microscopy (NIKON OPTISHOT-2). Ten fields were selected in regions of highest concentration of positive cells and examined at 400x magnification. A total of at least 2000 cells were viewed in each section. The labelling index (LI) was evaluated as the percentage of positive cells — stained nuclei for Ki-67 and TOPO 2A, or stained cytoplasm for AIP and VEGF.

The study was approved by the Local Bioethics Committee of the Jagiellonian University Medical College (KBET/84/B/2012).

Basic statistical and comparative analyses appropriate to the distributions of data were performed. Kolmogorov-Smirnov, Mann-Whitney, Kruskal-Wallis, analysis of variance, T-test, Wilcoxon test, and Fischer exact tests were applied. Relative risk (RR) was calculated based on  $\chi^2$  frequency tables. Linear regression was applied to evaluate the correlation of normally distributed variables ( $n \geq 30$ ). Otherwise, non-parametric Spearman rank correlation test was applied. For Kaplan-Meier (time-to-incidence plot with 36 months as the last follow-up point) and receiver operating characteristic (ROC) plots, GraphPad Prism version 5.03 for Windows (GraphPad Software, San Diego California, United States) was used. To establish predictors of recurrence and pituitary tumour advancement, Cox multiple regression and logistic regression were generated using the Statsdirect version 2.0 for Windows (Statsdirect Ltd., Cheshire, United Kingdom). *P* values of 0.05 or less were considered as being statistically significant.

## Results

Median concentrations of hGH and IGF-1 decreased significantly after surgery ( $p < 0.05$ ) (Table I). No correlation was found between hGH and IGF-1 concentration and tumour size prior to and after surgery ( $p > 0.05$ ).

The percentage of adenomas ( $n = 31$ ) with positive immunostaining for Ki-67, TOPO 2A, AIP, and VEGF was 24 (77.4%), 27 (87.1%), 26 (83.9%), and 27 (87.1%), respectively (Figure 1).

Mean and median values of studied indices are given in Table II.

In micro- and macroadenomas, expression of Ki-67 differed significantly with median values of 0.00% [IRQ = 1.32] and 1.45% [IQR = 1.81], respectively ( $p = 0.0155$ ) (Figure 2). Expression of Ki-67 exceeding 3% was observed in 3/31 tumours (9.7%). The maximum value of Ki-67 observed in one macroadenoma was 4.94%. Similarly, there was a significant difference between TOPO 2A expression in micro- and macroadenomas, with mean values of  $0.71 \pm 0.77\%$  and  $2.22 \pm 1.50\%$ , respectively ( $p = 0.001$ ) (Figure 2). However, there was no difference in AIP and VEGF expression.

No correlation between age or gender and Ki-67, TOPO 2A, AIP, and VEGF expression was found ( $p > 0.05$ ). However, there was a significant correlation between tumour size and expression of Ki-67 ( $r = 0.42$ ,  $p = 0.025$ ) and TOPO 2A ( $r = 0.53$ ,  $p = 0.003$ ). No correlation of AIP and VEGF with tumour size was noted. Interestingly, a correlation between Ki-67 and TOPO 2A indices was observed ( $r = 0.46$ ,  $p = 0.01$ ).

**Table I. Patients' characteristics**

**Tabela I. Charakterystyka pacjentów**

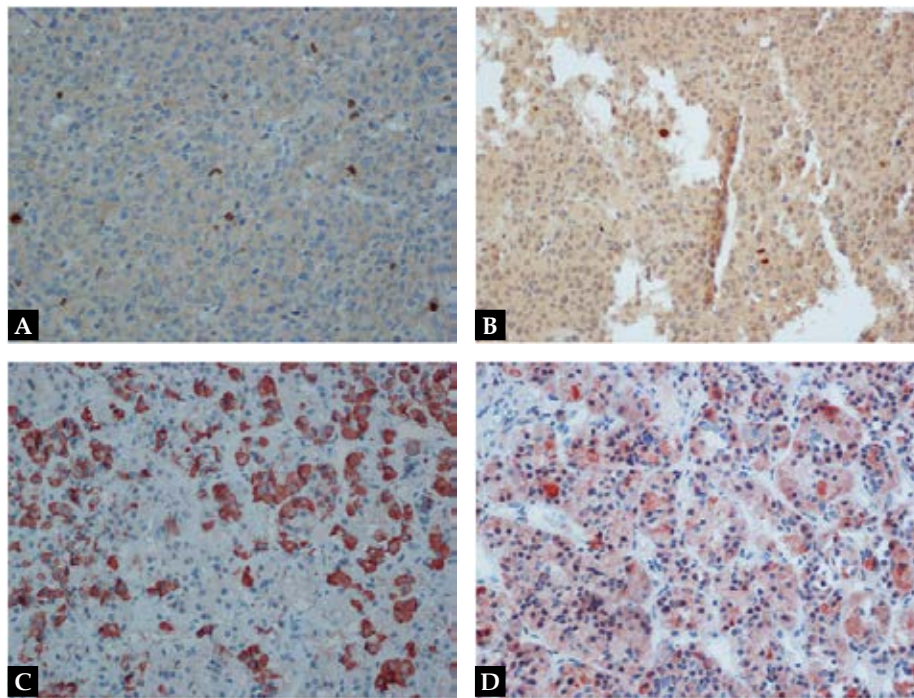
General data	Age: mean $\pm$ SD [y]	43 $\pm$ 14.3
	Gender: Female/male (%)	20 (64.5%)/11 (35.5%)
	Microadenoma (%)	8 (26.0%)
	Macroadenoma (%)	23 (74.0%)
	Size of tumour [mm]	16 [14.4]/22.2 $\pm$ 20.7
	Median [IQR]/mean $\pm$ SD	
	Local invasion of tumor	18 (58.1%)
	Compression/dislocation or modeling of the optic chiasm (%)	10 (32%)
	Sella turcica destruction	5 (16.1%)
	Cavernous sinus penetration	15 (48.4%)
	Suprasellar propagation	14 (45.1%)
	Complete surgery	13/31 (42%)
	Radiological progression/ recurrence in MRI (patients %)	after 12 months
	after 36 months	5/31 (16.13%)
Immunohistochemical findings* (n = 31)	Hormonal positivity	29 (93.7%)
	NCA	1 (3.2%)
	GH positive	27 (87.1%)
	PRL positive	18 (58.1%)
	ACTH positive	7 (22.6%)
	TSH positive	7 (22.6%)
Number of patients/(%)	FSH positive	4 (12.9%)
	LH positive	2 (6.5%)
	Plurihormonal	12 (38.7%)
	Histopathological features of malignancy*	4 (12.9%)
Hormones before surgery	hGH median [IQR] (min-max) [ng/ml]	18.5 [19.8]/ (2.8–170.0)
	IGF-1 median [IQR] (min-max) [ng/ml]	768.0 [610.2] (174.9–1999.0)
	**ULN median (min-max)	2.23 (0.40–4.33)
Hormones after surgery	hGH median [IQR] (min-max) [ng/ml]	2.25[4.0] (0.45–50.0)
	IGF-1 median [IQR] (min-max) [ng/ml]	267.0 [319.5] (43.3–980.0)
	**ULN median (min-max)	<b>0.65 (0.14–2.32)</b>

\*Pituitary adenomas were classified according to WHO 2004 classification

\*\*ULN — upper limit of normal IGF-1 concentration

n = 31, y — years

Local invasiveness (cavernous sinus penetration, optic chiasm compression, or suprasellar extension) occurred in 18/31 patients (58.1%). There was a significant



**Figure 1.** Immunohistochemical staining for studied markers of proliferation and invasion in pituitary adenomas, magnification 200x: **A.** Ki-67 nuclear staining; **B.** TOPO 2A — nuclear staining; **C.** AIP diffuse cytoplasmic immunostaining; **D.** VEGF — diffuse cytoplasmic immunostaining

**Rycina 1.** Ekspresja badanych markerów proliferacji i inwazyjności w gruczolakach przysadki — barwienie immunohistochemiczne, powiększenie mikroskopowe 200x: **A.** Ki-67 barwienie jądrowe; **B.** TOPO 2A — barwienie jądrowe; **C.** AIP — rozlane barwienie cytoplazmatyczne; **D.** VEGF — rozlane barwienie cytoplazmatyczne

**Table II.** Mean and median values of labelling indices of the studied markers

**Tabela II.** Mediany i wartości średnie indeksów barwienia dla badanych markerów

Parameter	Mean value $\pm$ SD	Median value [IQR]
Ki-67	1.5% $\pm$ 1.3	1.2% [IQR = 2.2]
TOPO 2A	1.9% $\pm$ 1.5	1.5% [IQR = 1.6]
AIP	26.1 $\pm$ 21.3	21.2% [IQR = 20.1]
VEGF	21.4% $\pm$ 15.9	20.4% [IQR = 15.4]

difference between mean values of Ki-67 index in invasive vs. non-invasive tumours:  $1.85 \pm 1.33\%$  vs.  $0.95 \pm 1.07\%$ , respectively ( $p = 0.024$ ) (Figure 3). Similarly, there was a significant difference between mean TOPO 2A index values in invasive vs. non-invasive tumours:  $2.19 \pm 1.63\%$  vs.  $1.45 \pm 1.23\%$ , respectively ( $p = 0.011$ ) (Figure 3).

Local recurrence/progression of the tumour, based on MRI evaluation after 12 and 36 months, occurred in 11 patients (35.5%). There was no difference in median values of the studied markers between recurrent and non-recurrent adenomas.

In ROC curve analysis, no cut-off point values were statistically significant for any marker. Therefore, we

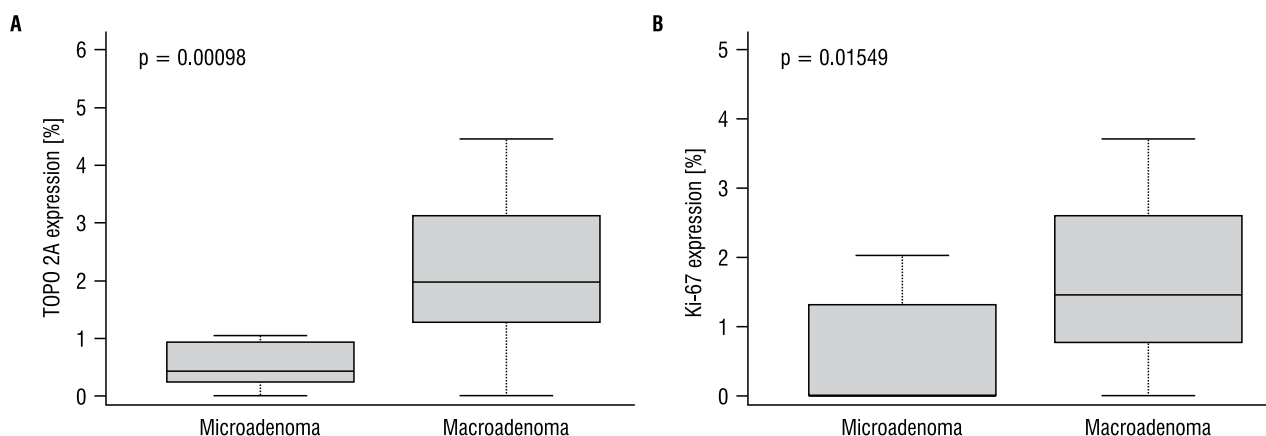
arbitrarily selected the following cut-off points: Ki-67 — 1%, TOPO 2A — 1%, VEGF — 10%, and AIP — 15%. On the plot of cumulated hazard, we tested whether expression of these markers above such cut-off points affected the frequency of disease recurrence. No significant difference was found for any marker. Using Cox multiple regression analysis, we calculated the relative risk (RR) of tumour recurrence depending on labelling index — no significant risk was found above these thresholds, except for AIP — above 15%, with RR = 3.85 (95% CI 1.96-98.93).

In 11 patients treated preoperatively with SSLAR (20–30 mg monthly) no expression of any of the markers was significantly affected. However, LI of VEGF was markedly lower in SSLAR-treated patients: 9.6% [8.79] vs. non-treated: 23.78% [23.24] ( $p = 0.075$ ) (Table III).

## Discussion

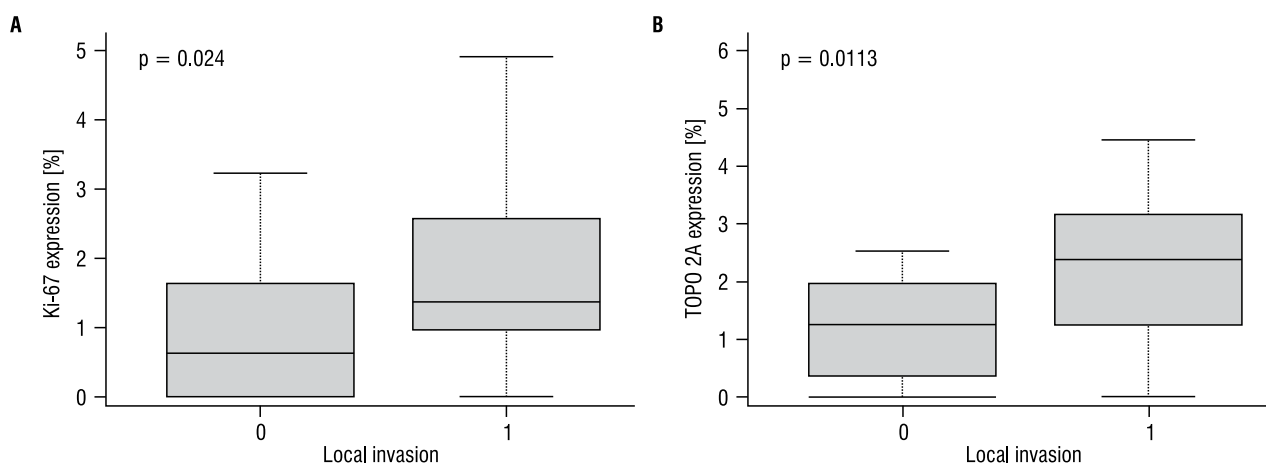
In the search for new markers of invasiveness, proliferation and angiogenesis in pituitary adenomas based on molecular mechanisms involved in uncontrolled cell proliferation and tumour growth, of particular interest are biomarkers that reliably predict the biological behaviour, allowing for targeted therapies.

We investigated the expression of Ki-67, TOPO 2A, AIP, and VEGF as proliferation markers of somatotropinomas



**Figure 2A.** Expression of TOPO 2A in micro- and macro-adenomas secreting hGH (mean  $\pm$  SD of LI); **B.** Expression of Ki-67 in micro- and macro-adenomas secreting hGH (median [IQR] of LI)

**Rycina 2A.** Ekspresja TOPO 2A w mikro- i makrogruczolakach przysadki wydzielających hGH (wartości średnie  $\pm$  SD LI); **B.** Ekspresja Ki-67 w mikro- i makrogruczolakach przysadki wydzielających hGH (mediany [IQR] LI)



**Figure 3A.** Expression of Ki-67 in non-invasive and invasive somatotropinomas (mean  $\pm$  SD of LI); **B.** Expression of TOPO 2A in non-invasive and invasive somatotropinomas (mean  $\pm$  SD of LI); 0 — non-invasive somatotropinomas; 1 — invasive somatotropinomas

**Rycina 3A.** Ekspresja Ki-67 w nieinwazyjnych i inwazyjnych gruczolakach przysadki wydzielających hGH (wartości średnie  $\pm$  SD); **B.** Ekspresja TOPO 2A w nieinwazyjnych i inwazyjnych gruczolakach przysadki wydzielających hGH (wartości średnie  $\pm$  SD); 0 — nieinwazyjne somatotropinoma; 1 — inwazyjne somatotropinoma

**Table III.** Expression of studied markers (LI) in patients treated ( $n = 11$  patients) and non-treated with SSLAR prior to surgery of pituitary adenoma

**Tabela III.** Ekspresja badanych markerów (LI) w grupie pacjentów leczonych ( $n = 11$ ) i nieleczonych SSLAR przed operacją gruczolaka przysadki

Marker	Non-treated median [IQR]	Treated median [IQR]	p*
Ki-67	1.3% [2.25]	2.03% [2.57]	0.78
TOPO 2A	1.49% [1.9]	1.27% [2.11]	0.39
AIP	23.3% [32.4]	18.03% [19.76]	0.56
VEGF	23.78% [23.24]	9.6% [8.79]	0.075

in patients who underwent neurosurgery. We evaluated the relationship between these markers and patient demographic data and between tumour features to establish their prognostic value and indication for reoperation or radiotherapy. We also analysed the effect of preoperative treatment with SSLAR on the expression of the studied markers.

#### Expression of investigated markers

The percentage of adenomas with positive immunostaining for Ki-67 in the study group was over 77% as compared to 88% or 100% as reported by other authors [23, 24]. In our study somatotropinomas presented generally with Ki-67 index  $< 3\%$ , and high variation (range

0–4.94%), with values exceeding 3% in only three atypical tumours. In a group of predominantly non-functioning adenomas, Ki-67 indices ranged from 1% to 4.8% [24] and from 1.4% to 5.2% in somatotropinomas [25].

TOPO 2A-positive immunostaining in our somatotropinomas was higher than that in patients with different types of PAs [11, 13], where values of the TOPO 2A index ranged from 0% to 3.5%, with a median value of about 0.7% [13, 26], against our median LI of 1.5%.

AIP expression in somatotropinomas is ambiguous. AIP mutations were detected in 2–4% of young acromegalic patients with sporadic microadenoma and macroadenoma [17]. In our sporadic somatotropinomas AIP was positive in over 80% of tumours, which is in line with other studies [27], while Kasuki et al. found low expression in only about 50% of somatotropinomas [18].

VEGF immunostaining in normal pituitary glands was higher than in adenomas, with greater expression in pituitary carcinomas in relation to adenomas [28], while the highest expression of VEGF was found in non-functioning and GH-producing adenomas. On the other hand, in a RT-PCR study of different subtypes of pituitary adenomas, somatotropinomas showed lowest VEGF expression [29, 30]. In IHC, expression of VEGF was decreased in somatotropinomas, against normal tissue [31].

We note the difficulty of comparing our AIP and VEGF results with those of other authors who analysed different types of PAs using different evaluation methods. In our view, the particular value of our investigation is in its relatively large and homogeneous group of GH-secreting adenomas.

### *Age and gender*

In our group of somatotropinomas we found no correlation between age and gender, and values of the studied markers. In other studies of GH-secreting adenomas, Ki-67 index depended on gender but not on patient age [32]. Results concerning TOPO 2A expression are generally inconclusive: Vidal et al. [11] found negative correlation between TOPO 2A expression and patient age and no correlation with patient gender, while elsewhere TOPO 2A expression did not depend on patient age [13, 14]. Age and gender and adenoma type did not affect AIP [18] and VEGF expression [31].

### *Tumour size*

We found clear correlation between values of Ki-67 and TOPO 2A indices and tumour size, the difference between values of Ki-67 and TOPO 2A in micro- and macro-adenomas being statistically significant. However, lack of correlation between Ki-67 expression and tumour size was also reported [8]. Elsewhere, higher TOPO 2A expression was shown in non-functioning macroadenomas, which correlated with tumour size [13],

while no correlation between TOPO 2A expression and tumour size [14], or even negative correlation [11] were also observed. A low AIP score was found in large somatotropinomas [33]. No correlation of VEGF expression with tumour size was stated [29, 31], which our study confirms.

### *Invasiveness*

Local invasion and infiltration of the adjacent structures, postoperative regrowth or persistence of hormonal function are potential indicators of PA aggressiveness [11, 13, 21, 22]. In our study Ki-67 and TOPO 2A indices were significantly higher in invasive vs. non-invasive somatotropinomas. Determination of TOPO 2A activity enabled a group of invasive pituitary adenomas to be distinguished [11, 13]. However, no advantage of TOPO 2A over Ki-67 was stated [11]. In the work of Kasuki et al. [34] the range of Ki-67 index in invasive somatotropinomas (0–20.6%) was much wider than that in our group, with a 2.3% cut-off point on their ROC curve. Other investigators found no correlation between Ki-67 index and somatotropinoma invasiveness [35, 36]. Nevertheless, the opinion prevails that radiological grading, IHC classification, and Ki-67 as prognostic markers are important in evaluating the true nature of atypical pituitary adenomas [4, 5, 7, 16, 23, 37].

In our somatotropinomas there was no significant difference between mean values of AIP and VEGF indices in invasive vs. non-invasive tumours. In some 50% of sporadic adenomas, low intrinsic AIP expression, predominant invasiveness, and poor response to somatostatin analogues (SSA) are observed [27, 33, 34, 38], especially in patients with confirmed AIP mutation [27]. While in somatotropinomas AIP was claimed to be a better marker of invasiveness than Ki-67 and p53 [34], its expression varied widely in our study and elsewhere [27].

In agreement with Kurosaki et al. [31], we found no difference in VEGF expression between invasive and non-invasive tumours, as opposed to the suggested VEGF LI above 25% as a cut-off value for invasive somatotropinomas [36]. Higher VEGF expression was seen in invasive non-functioning giant adenomas and tumours with extrasellar growth [25, 29], in contrast to low VEGF expression in patients, 70% of whom achieved remission [35]. We may thus presume that VEGF plays an indirect role in the development of somatotropinomas, being an independent stimulator of angiogenic growth and progression in GH-secreting adenomas.

### *Tumour recurrence*

In our study, no differences between median values of relevant indices for any marker were found, nor could any cut-off points be established for recurrent and

non-recurrent adenomas. Therefore, in our cohort, no relation between these parameters and clinical outcome could be demonstrated.

However, we noted after 12 months of observation that recurrences occurred in all and in almost all adenomas in which Ki-67 and TOPO 2A indices exceeded the arbitrarily chosen cut-off points of 1%.

In our group of somatotropinomas, in only three patients (9.7%) did Ki-67 index exceed 3%, this patient number not being statistically significant. The role of Ki-67 as a marker of recurrence in pituitary tumours is not established. In small and non-homogenous patient groups with non-functioning PAs and somatotropinomas, expression of Ki-67 was not related to tumour recurrence nor to local invasion [23, 24]. Magagna-Poveda et al. [39] confirmed earlier studies that only the MIB-1 proliferation index was related to tumour recurrence. In their study of 35 giant pituitary adenomas, 60% of patients with Ki-67 > 3% experienced tumour recurrence, as compared to patients with Ki-67 < 3%, in whom the recurrence rate was only 6.7%. Grupetta et al. [8] confirmed that high Ki-67 predicts tumour regrowth.

Our rate of recurrence is similar to that found by other authors [8, 13, 39], although in their case non-homogenous groups of different pituitary adenomas including GH-secreting tumours were evaluated.

Studies of the relation between tumour recurrence and expression of VEGF and AIP based on IHC are sparse and contradictory. A low level of VEGF detected PAs with higher rates of regrowth [8]. A low level of AIP was associated with higher proliferative activity, predicting recurrence in somatotropinomas [40].

In our work, the dependence of RR of tumour recurrence on the values of markers studied was not significant above any of the arbitrarily chosen cut-off points, except in the case of AIP above 15%, indicating that the chance of recurrence is over three times higher.

### *Pre-surgical SSLAR treatment*

In our somatotropinomas, SSLAR treatment did not significantly affect the expression of any of the studied markers. However, VEGF expression was markedly lower in the treated vs. non-treated groups of patients.

Somatostatin analogues in patients with acromegaly inhibit TOPO 2A expression, providing molecular evidence of their effectiveness [11, 13]. SSA modulate AIP in somatotropinomas, increasing the number of AIP-positive cells in immunostaining after lanreotide treatment, compared with patients treated by surgery only [41].

The AIP score was up-regulated in SSA-treated tumours with better preoperative response such as IGF-1 decrease or tumour shrinkage [42], suggesting that AIP is involved in the aggressiveness of sporadic somatotropinomas [33]. Therefore, AIP expression in

sporadic somatotropinomas might be a predictor of the response to SSA therapy independently of SSTR2 expression [18].

In patients with invasive adenomas pre-treated with SSA before surgery, a decrease in VEGF staining was observed [28, 31, 36], as well as lower expression of VEGF mRNA [29], suggesting that SSA may inhibit angiogenesis through down-regulation of VEGF. However, studies on SSA modulation of VEGF expression are few and inconclusive [29].

### *Ki-67 and TOPO 2A correlation*

In our group of somatotropinomas, we found correlation between Ki-67 and TOPO 2A, in line with Wolfsberger et al. [14], who found a strong correlation between MIB-1 and TOPO 2A expression in PAs, unlike Vidal et al. [11]. In contradiction to our study, a significant negative correlation between AIP score and Ki-67 index was also observed [33].

## **Conclusions**

Markers of proliferation: Ki-67, TOPO 2A, AIP, and VEGF were expressed in over 70% of all somatotropinomas. Only Ki-67 and TOPO 2A expression was related to tumour size. Ki-67 and TOPO 2A expression was found to correlate with tumour invasiveness.

Since almost all somatotropinomas expressed Ki-67, TOPO 2A, AIP, and VEGF, these markers are potential targets for non-invasive treatment.

### *Declaration of interests*

The authors have no potential conflicts of interest to declare.

### *Acknowledgements*

The authors wish to thank Ms. Edyta Radwanska, MSc, for her excellent technical assistance.

### *Autorship and contributions*

Agata Baldys-Waligorska: conception of statutory grant, design of study, writing of the manuscript, reference search  
Iga Wierzbicka: methods, investigation

Grzegorz Sokołowski: analysis of data, statistics, illustrations

Dariusz Adamek: methods, investigation

Filip Golkowski: analysis of data, reference search, editing

## **References**

1. Dworakowska D, Grossman AB. The pathophysiology of pituitary adenomas. *Best Pract Res Clin Endocrinol Metab.* 2009; 23(5): 525–541, doi: [10.1016/j.beem.2009.05.004](https://doi.org/10.1016/j.beem.2009.05.004), indexed in Pubmed: [19945021](https://pubmed.ncbi.nlm.nih.gov/19945021/).
2. Baldys-Waligorska A, Krzentowska-Korek A, Golkowski F, et al. The predictive value of the IGF-1 level in acromegaly patients treated by surgery and a somatostatin analogue. *Endokrynol Pol.* 2011; 62(5): 401–408, indexed in Pubmed: [22069100](https://pubmed.ncbi.nlm.nih.gov/22069100/).

3. Meij BP, Lopes MBS, Ellegala DB, et al. The long-term significance of microscopic dural invasion in 354 patients with pituitary adenomas treated with transphenoidal surgery. *J Neurosurg*. 2002; 96(2): 195–208, doi: [10.3171/jns.2002.96.2.195](https://doi.org/10.3171/jns.2002.96.2.195), indexed in Pubmed: [11838791](https://pubmed.ncbi.nlm.nih.gov/11838791/).
4. Trouillas J, Roy P, Sturm N, et al. members of HYPOPRONOS. A new prognostic clinicopathological classification of pituitary adenomas: a multicentric case-control study of 410 patients with 8 years post-operative follow-up. *Acta Neuropathol*. 2013; 126(1): 123–135, doi: [10.1007/s00401-013-1084-y](https://doi.org/10.1007/s00401-013-1084-y), indexed in Pubmed: [23400299](https://pubmed.ncbi.nlm.nih.gov/23400299/).
5. DeLellis RA, Lloyd RV, Heitz PU. Pathology and Genetics of Tumors of Endocrine Organs. In: World Health Organisation Classification of Tumors. IARC Press, Lyon 2004: 9–47.
6. Wolfsberger S, Knosp E. Comments on the WHO 2004 classification of pituitary tumors. *Acta Neuropathol*. 2006; 111(1): 66–67, doi: [10.1007/s00401-005-1097-2](https://doi.org/10.1007/s00401-005-1097-2), indexed in Pubmed: [16328524](https://pubmed.ncbi.nlm.nih.gov/16328524/).
7. Zada G, Woodmansee WW, Ramkissoon S, et al. Atypical pituitary adenomas: incidence, clinical characteristics, and implications. *J Neurosurg*. 2011; 114(2): 336–344, doi: [10.3171/2010.8.JNS10290](https://doi.org/10.3171/2010.8.JNS10290), indexed in Pubmed: [20868211](https://pubmed.ncbi.nlm.nih.gov/20868211/).
8. Gruppetta M, Formosa R, Falzon S, et al. Expression of cell cycle regulators and biomarkers of proliferation and regrowth in human pituitary adenomas. *Pituitary*. 2017; 20(3): 358–371, doi: [10.1007/s11102-017-0803-0](https://doi.org/10.1007/s11102-017-0803-0), indexed in Pubmed: [28342098](https://pubmed.ncbi.nlm.nih.gov/28342098/).
9. Al-Shraim M, Asa SL. The 2004 World Health Organization classification of pituitary tumors: what is new? *Acta Neuropathol*. 2006; 111(1): 1–7, doi: [10.1007/s00401-005-1093-6](https://doi.org/10.1007/s00401-005-1093-6), indexed in Pubmed: [16328527](https://pubmed.ncbi.nlm.nih.gov/16328527/).
10. Clarke DJ, Vas AC, Andrews CA, et al. Topoisomerase II checkpoints: universal mechanisms that regulate mitosis. *Cell Cycle*. 2006; 5(17): 1925–1928, doi: [10.4161/cc.5.17.3200](https://doi.org/10.4161/cc.5.17.3200), indexed in Pubmed: [16940751](https://pubmed.ncbi.nlm.nih.gov/16940751/).
11. Vidal S, Kovacs K, Horvath E, et al. Topoisomerase IIalpha expression in pituitary adenomas and carcinomas: relationship to tumor behavior. *Mod Pathol*. 2002; 15(11): 1205–1212, doi: [10.1097/01.MP.0000036342.73003.55](https://doi.org/10.1097/01.MP.0000036342.73003.55), indexed in Pubmed: [12429800](https://pubmed.ncbi.nlm.nih.gov/12429800/).
12. Cao Yi, Ke R, Wang S, et al. DNA topoisomerase II $\alpha$  and Ki67 are prognostic factors in patients with hepatocellular carcinoma. *Oncol Lett*. 2017; 13(6): 4109–4116, doi: [10.3892/ol.2017.5999](https://doi.org/10.3892/ol.2017.5999), indexed in Pubmed: [28599412](https://pubmed.ncbi.nlm.nih.gov/28599412/).
13. Trofimiuk-Müldner M, Baldys-Waligórska A, Sokolowski G, et al. Topoisomerase II $\alpha$  as a prognostic factor in pituitary tumors. *Pol Arch Med Wewn*. 2014; 124(10): 500–508, indexed in Pubmed: [25692206](https://pubmed.ncbi.nlm.nih.gov/25692206/).
14. Wolfsberger S, Wunderer J, Zachenhofer I, et al. Expression of cell proliferation markers in pituitary adenomas—correlation and clinical relevance of MIB-1 and anti-topoisomerase-IIalpha. *Acta Neurochir (Wien)*. 2004; 146(8): 831–839, doi: [10.1007/s00701-004-0298-0](https://doi.org/10.1007/s00701-004-0298-0), indexed in Pubmed: [15254805](https://pubmed.ncbi.nlm.nih.gov/15254805/).
15. Hernández-Ramírez LC, Martucci F, Morgan RML, et al. Rapid Proteasomal Degradation of Mutant Proteins Is the Primary Mechanism Leading to Tumorigenesis in Patients With Missense AIP Mutations. *J Clin Endocrinol Metab*. 2016; 101(8): 3144–3154, doi: [10.1210/jc.2016-1307](https://doi.org/10.1210/jc.2016-1307), indexed in Pubmed: [27253664](https://pubmed.ncbi.nlm.nih.gov/27253664/).
16. Sav A, Rotondo F, Syro LV, et al. Biomarkers of pituitary neoplasms. *Anticancer Res*. 2012; 32(11): 4639–4654, indexed in Pubmed: [23155226](https://pubmed.ncbi.nlm.nih.gov/23155226/).
17. Schöfl C, Honegger J, Droste M, et al. Frequency of AIP gene mutations in young patients with acromegaly: a registry-based study. *J Clin Endocrinol Metab*. 2014; 99(12): E2789–E2793, doi: [10.1210/jc.2014-2094](https://doi.org/10.1210/jc.2014-2094), indexed in Pubmed: [25093619](https://pubmed.ncbi.nlm.nih.gov/25093619/).
18. Kasuki L, Vieira Neto L, Wildemberg LE, et al. AIP expression in sporadic somatotropinomas is a predictor of the response to octreotide LAR therapy independent of SSTR2 expression. *Endocr Relat Cancer*. 2012; 19(3): L25–L29, doi: [10.1530/ERC-12-0020](https://doi.org/10.1530/ERC-12-0020), indexed in Pubmed: [22420004](https://pubmed.ncbi.nlm.nih.gov/22420004/).
19. Siveen KS, Prabhu K, Krishnankutty R, et al. Vascular Endothelial Growth Factor (VEGF) Signaling in Tumour Vascularization: Potential and Challenges. *Curr Vasc Pharmacol*. 2017; 15(4): 339–351, doi: [10.2174/157016115666170105124038](https://doi.org/10.2174/157016115666170105124038), indexed in Pubmed: [28056756](https://pubmed.ncbi.nlm.nih.gov/28056756/).
20. McCabe CJ, Boelaert K, Tannahill LA, et al. Vascular endothelial growth factor, its receptor KDR/Flk-1, and pituitary tumor transforming gene in pituitary tumors. *J Clin Endocrinol Metab*. 2002; 87(9): 4238–4244, doi: [10.1210/jc.2002-020309](https://doi.org/10.1210/jc.2002-020309), indexed in Pubmed: [12213878](https://pubmed.ncbi.nlm.nih.gov/12213878/).
21. Knosp E, Steiner E, Kitz K, et al. Pituitary adenomas with invasion of the cavernous sinus space: a magnetic resonance imaging classification compared with surgical findings. *Neurosurgery*. 1993; 33(4): 610–7; discussion 617, indexed in Pubmed: [8232800](https://pubmed.ncbi.nlm.nih.gov/8232800/).
22. Zada G, Lin N, Laws ER. Patterns of extrasellar extension in growth hormone-secreting and nonfunctional pituitary macroadenomas. *Neurosurg Focus*. 2010; 29(4): E4, doi: [10.3171/2010.7.FOCUS10155](https://doi.org/10.3171/2010.7.FOCUS10155), indexed in Pubmed: [20887129](https://pubmed.ncbi.nlm.nih.gov/20887129/).
23. Wierzbicka-Iutka I, Sokolowski G, Baldys-Waligórska A, et al. PTTG and Ki-67 expression in pituitary adenomas. *Przegl Lek*. 2016; 73(2): 53–58, indexed in Pubmed: [27197423](https://pubmed.ncbi.nlm.nih.gov/27197423/).
24. Landeiro JA, Fonseca EO, Monnerat AL, et al. Nonfunctioning giant pituitary adenomas: Invasiveness and recurrence. *Surg Neurol Int*. 2015; 6: 179, doi: [10.4103/2152-7806.170536](https://doi.org/10.4103/2152-7806.170536), indexed in Pubmed: [26674325](https://pubmed.ncbi.nlm.nih.gov/26674325/).
25. Sarkar S, Chacko AG, Chacko G. An analysis of granulation patterns, MIB-1 proliferation indices and p53 expression in 101 patients with acromegaly. *Acta Neurochir (Wien)*. 2014; 156(12): 2221–30; discussion 2230, doi: [10.1007/s00701-014-2230-6](https://doi.org/10.1007/s00701-014-2230-6), indexed in Pubmed: [25238988](https://pubmed.ncbi.nlm.nih.gov/25238988/).
26. Chacko G, Chacko AG, Lombardero M, et al. Clinicopathologic correlates of giant pituitary adenomas. *J Clin Neurosci*. 2009; 16(5): 660–665, doi: [10.1016/j.jocn.2008.08.018](https://doi.org/10.1016/j.jocn.2008.08.018), indexed in Pubmed: [19285407](https://pubmed.ncbi.nlm.nih.gov/19285407/).
27. Jaffrain-Rea ML, Angelini M, Gargano D, et al. Expression of aryl hydrocarbon receptor (AHR) and AHR-interacting protein in pituitary adenomas: pathological and clinical implications. *Endocr Relat Cancer*. 2009; 16(3): 1029–1043, doi: [10.1677/ERC-09-0094](https://doi.org/10.1677/ERC-09-0094), indexed in Pubmed: [19556287](https://pubmed.ncbi.nlm.nih.gov/19556287/).
28. Lloyd RV, Scheithauer BW, Kuroki T, et al. Vascular Endothelial Growth Factor (VEGF) Expression in Human Pituitary Adenomas and Carcinomas. *Endocr Pathol*. 1999; 10(3): 229–235, indexed in Pubmed: [12114703](https://pubmed.ncbi.nlm.nih.gov/12114703/).
29. Sánchez-Ortiga R, Sánchez-Tejada L, Moreno-Perez O, et al. Overexpression of vascular endothelial growth factor in pituitary adenomas is associated with extrasellar growth and recurrence. *Pituitary*. 2013; 16(3): 370–377, doi: [10.1007/s11102-012-0434-4](https://doi.org/10.1007/s11102-012-0434-4), indexed in Pubmed: [22990332](https://pubmed.ncbi.nlm.nih.gov/22990332/).
30. Wang Y, Li J, Tohti M, et al. The expression profile of Dopamine D2 receptor, MGMT and VEGF in different histological subtypes of pituitary adenomas: a study of 197 cases and indications for the medical therapy. *J Exp Clin Cancer Res*. 2014; 33: 56, doi: [10.1186/s13046-014-0056-y](https://doi.org/10.1186/s13046-014-0056-y), indexed in Pubmed: [25027022](https://pubmed.ncbi.nlm.nih.gov/25027022/).
31. Kurosaki M, Saegert W, Abe T, et al. Expression of vascular endothelial growth factor in growth hormone-secreting pituitary adenomas: special reference to the octreotide treatment. *Neurol Res*. 2008; 30(5): 518–522, doi: [10.1179/174313208X289499](https://doi.org/10.1179/174313208X289499), indexed in Pubmed: [18953743](https://pubmed.ncbi.nlm.nih.gov/18953743/).
32. Alimohamadi M, Ownagh V, Mahouzi L, et al. The impact of immunohistochemical markers of Ki-67 and p53 on the long-term outcome of growth hormone-secreting pituitary adenomas: A cohort study. *Asian J Neurosurg*. 2014; 9(3): 130–136, doi: [10.4103/1793-5482.142732](https://doi.org/10.4103/1793-5482.142732), indexed in Pubmed: [25685203](https://pubmed.ncbi.nlm.nih.gov/25685203/).
33. Jaffrain-Rea ML, Rotondi S, Turchi A, et al. Somatostatin analogues increase AIP expression in somatotropinomas, irrespective of Gsp mutations. *Endocr Relat Cancer*. 2013; 20(5): 753–766, doi: [10.1530/ERC-12-0322](https://doi.org/10.1530/ERC-12-0322), indexed in Pubmed: [23940012](https://pubmed.ncbi.nlm.nih.gov/23940012/).
34. Kasuki Jomori de Pinho L, Vieira Neto L, Armondi Wildemberg LE, et al. Low aryl hydrocarbon receptor-interacting protein expression is a better marker of invasiveness in somatotropinomas than Ki-67 and p53. *Neuroendocrinology*. 2011; 94(1): 39–48, doi: [10.1159/000322787](https://doi.org/10.1159/000322787), indexed in Pubmed: [21178332](https://pubmed.ncbi.nlm.nih.gov/21178332/).
35. Yilmaz M, Vural E, Koc K, et al. Cavernous sinus invasion and effect of immunohistochemical features on remission in growth hormone secreting pituitary adenomas. *Turk Neurosurg*. 2015; 25(3): 380–388, doi: [10.5137/1019-5149.JTN.9347-13.1](https://doi.org/10.5137/1019-5149.JTN.9347-13.1), indexed in Pubmed: [26037177](https://pubmed.ncbi.nlm.nih.gov/26037177/).
36. Yarman S, Kurtulmus N, Canbolat A, et al. Expression of Ki-67, p53 and vascular endothelial growth factor (VEGF) concomitantly in growth hormone-secreting pituitary adenomas; which one has a role in tumor behavior? *Neuro Endocrinol Lett*. 2010; 31(6): 823–828, indexed in Pubmed: [21196926](https://pubmed.ncbi.nlm.nih.gov/21196926/).
37. Sen A, Das C, Mukhopadhyay M, et al. Cytohistological correlation in pituitary tumor and immunological assessment with the help of Ki-67. *J Postgrad Med*. 2017; 63(2): 96–99, doi: [10.4103/0022-3859.192797](https://doi.org/10.4103/0022-3859.192797), indexed in Pubmed: [27779153](https://pubmed.ncbi.nlm.nih.gov/27779153/).
38. Dénes J, Kasuki L, Trivellin G, et al. Regulation of aryl hydrocarbon receptor interacting protein (AIP) protein expression by MiR-34a in sporadic somatotropinomas. *PLoS One*. 2015; 10(2): e0117107, doi: [10.1371/journal.pone.0117107](https://doi.org/10.1371/journal.pone.0117107), indexed in Pubmed: [25658813](https://pubmed.ncbi.nlm.nih.gov/25658813/).
39. Magagna-Poveda A, Leske H, Schmid C, et al. Expression of somatostatin receptors, angiogenesis and proliferation markers in pituitary adenomas: an immunohistochemical study with diagnostic and therapeutic implications. *Swiss Med Wkly*. 2013; 143: w13895, doi: [10.4414/smw.2013.13895](https://doi.org/10.4414/smw.2013.13895), indexed in Pubmed: [24222652](https://pubmed.ncbi.nlm.nih.gov/24222652/).
40. Ritvonen E, Pitkänen E, Karppinen A, et al. Impact of AIP and inhibitory G protein alpha 2 proteins on clinical features of sporadic GH-secreting pituitary adenomas. *Eur J Endocrinol*. 2017; 176(2): 243–252, doi: [10.1530/EJE-16-0620](https://doi.org/10.1530/EJE-16-0620), indexed in Pubmed: [27998919](https://pubmed.ncbi.nlm.nih.gov/27998919/).
41. Chahal HS, Trivellin G, Leontiou CA, et al. Somatostatin analogs modulate AIP in somatotroph adenomas: the role of the ZAC1 pathway. *J Clin Endocrinol Metab*. 2012; 97(8): E1411–E1420, doi: [10.1210/jc.2012-1111](https://doi.org/10.1210/jc.2012-1111), indexed in Pubmed: [22659247](https://pubmed.ncbi.nlm.nih.gov/22659247/).
42. Zawada NB, Kunert-Radek J, Pawlikowski M, et al. An evaluation of the effects of somatostatin analogue therapy in non-functioning pituitary adenomas in comparison to acromegaly. *Endokrynol Pol*. 2016; 67(3): 292–298, doi: [10.5603/EP.a2016.0043](https://doi.org/10.5603/EP.a2016.0043), indexed in Pubmed: [27345147](https://pubmed.ncbi.nlm.nih.gov/27345147/).