

## Original paper

# The efficacy of new oral contrast mixture for computed tomography enterography

Şehnaz Evrimler<sup>1B,D,E,F</sup>, Gökhan Ocağolu<sup>2C</sup>, Oktay Algin<sup>3A</sup><sup>1</sup>Suleyman Demirel University, Faculty of Medicine, Department of Radiology, Isparta, Turkey<sup>2</sup>Uludag University, Faculty of Medicine, Department of Biostatistics, Bursa, Turkey<sup>3</sup>Yildirim Beyazıt University, Faculty of Medicine, Department of Radiology, Ankara, Turkey

## Abstract

**Purpose:** To show the reliabilities of the new mixture (composed of water, methylcellulose, lactulose, locust bean gum, and sorbitol) and to compare the luminal distension and radiological confidence scores of this solution with water-lactulose mixture.

**Material and methods:** Computed tomography enterography (CTE) images in a three-year period were included randomly in our institutional review board-approved and retrospective study. Ninety-one patients drank a lactulose and water mixture (Group 1), and 54 patients drank the new mixture (Group 2). Patients who drank the oral contrast agent were taken to a 64-detector row multiple detector computed tomography machine. Coronal and sagittal reformatted images were also formed. The gastrointestinal tract was divided into 11 segments for scoring. Each segment was graded for distension and radiological confidence. CTE images were evaluated by two radiologists.

**Results:** Inter- and intra-reader reliabilities were good or excellent for all gastrointestinal segments in both groups ( $p < 0.001$ ). The best  $\kappa$  values were obtained in sigmoid colon assessments. Lower agreement values were detected in duodenum and jejunum scores. The new mixture group (Group 2) showed better results than Group 1 for ileum and colonic segments according to distension and confidence scorings.

**Conclusions:** Inter- and intra-reader reliabilities of the new mixture were good or excellent for CTE. The new mixture seems to be more efficient and reliable for ileum and colon. The new mixture can increase bowel distention, radiological confidence, and quality in CTE evaluations.

**Key words:** reliability, small intestine, CT enterography, oral/rectal contrast.

## Introduction

Computed tomography enterography (CTE) is an imaging technique, developed for assessing small bowel diseases. CTE is based on obtaining intravenous contrast-material enhanced abdominopelvic computed tomography (CT) images after oral contrast agent (OCA) administration for optimal small bowel distension and bowel tissue discrimination [1]. The advantages of this technique are being non-invasive, enabling high-resolution images, and the evaluation of both enteric and extra-enteric structures [2]. CTE is a more cost-effective imaging method, which

provides faster imaging with higher spatial and temporal resolution than magnetic resonance elastography (MRE). Another superiority of CTE to MRE is the ability of luminal navigation. Indications are diagnosis and follow-up of inflammatory bowel diseases, diarrhoea, gastrointestinal tract bleeding, small bowel obstruction, neoplasm, polyposis syndromes, or radiation enteritis [3,4]. Inadequate bowel distension can result in misdiagnoses, such as; wall thickening, abnormal mural enhancement, or obscuring of intra-luminal lesions [3,5,6]. Polyethylenoglycol (PEG), water, methylcellulose, mannitol, and low-concentration barium with sorbitol have been studied as OCAs for CTE

## Correspondence address:

Dr. Şehnaz Evrimler, Suleyman Demirel University, Faculty of Medicine, Department of Radiology, East Campus Cunur, Isparta, Turkey, e-mail: [drsehnaz@gmail.com](mailto:drsehnaz@gmail.com)

## Authors' contribution:

A Study design · B Data collection · C Statistical analysis · D Data interpretation · E Manuscript preparation · F Literature search · G Funds collection

in literature [1-4]. However, water cannot provide optimal luminal distension because of rapid absorption, and other OCAs can cause adverse effects like diarrhoea, spasm, nausea, and vomiting. Which OCAs should be used for CTE to obtain adequate luminal distension with the least adverse effect is still controversial. Therefore, we developed a new mixture of OCA, showing characteristics of both negative and positive agents, which was composed of water, methylcellulose, lactulose, locust bean gum, and sorbitol. The aim of this study was to show the characteristics of the new mixture and to compare the luminal distension and radiological confidence of the solution with the water-lactulose mixture.

## Material and methods

CTE images from a three-year period (performed between 2013 and 2016) were included in our institutional review board-approved, retrospective study after informed consent was obtained. Inclusion criteria were the evaluation of diarrhoea, gastrointestinal (GI) tract bleeding, inflammatory bowel disease, coeliac disease, or small bowel tumour. Exclusion criteria were an allergy to contrast materials, renal insufficiency, pregnancy, claustrophobia, galactose intolerance, GI tract obstruction, and paediatric age. Ninety-one patients drank lactulose-water mixture (Group 1), and 54 patients drank the new mixture (Group 2). Patients were assigned to the groups in random order.

## Imaging protocol and preparation of the oral contrast agents

A bowel cleansing diet and 50 ml laxative diet solution (X-M diet solution, Yenisehir Laboratory, Ankara, Turkey) were administered to the patients the night before and on the morning of the examination. All patients were asked to drink a total of 1500 ml of OCA in 50 minutes – 300 ml every 10 minutes. In patients with suspicious low/moderate-grade small bowel obstruction, extra-intestinal fluid collection, fistulae, or radiation enteritis the OCA was mixed with 40 ml Iopromide (Ultravist, Schering, Germany) in addition to the other substances, for both of the groups.

The patients in Group 1 drank 1500 ml of OCA, composed of 200 ml (670 mg/ml) lactulose and 1300 ml water. The patients in Group 2 drank a total of 1500 ml mixture of water with 10 g hydroxypropyl-methylcellulose, 10 g lactulose, 5 g locust bean gum, and 5 g sorbitol. Although the ingredients of the mixture are well known OCAs, as far as we know they have not been used in this combination before.

Patients who drank the OCA were taken to a 64-detector row multiple detector computed tomography (MDCT) machine (Aquilion 64, Toshiba, Tokyo, Japan). Images were obtained from the level of the diaphragm to the level of

the symphysis pubis, in the enteric phase (60 seconds) after the intravenous administration of 100 ml of Iopromide (Ultravist, Schering, Germany) at a flow rate of 3 ml/s. Multiphasic CTE was performed for occult GI tract bleeding. In order to decrease the intestinal motility, a spasmolytic agent, 20 mg of hyoscine-*N*-butylbromide (Buscopan, Boehringer Ingelheim Ltd, Bracknell, UK), was given intravenously immediately before the scanning. Images were obtained with 2 mm slice thickness and reconstructed in 1 mm slice thickness. Coronal and sagittal reformatted images were also formed.

## Image analysis

CTE images were evaluated by two radiologists (O.A., S.E.) independently. The second observer also evaluated the same data three weeks later for the intra-observer statistics. They were blinded to the pre-diagnosis, clinical, and laboratory findings of the patients. The authors were also blinded as to which contrast agent was used. They had not seen the images before the study.

The GI tract was divided into 11 segments for scoring, as follows: stomach, duodenum, jejunum, ileum, ileocecal area, cecum, ascending colon, transverse colon, descending colon, sigmoid colon, and rectum. Each segment was graded for distension and radiological confidence. Grading of luminal distension was as follows: score 0, collapsed segment; score 1, poor distension; score 2, moderate distension; score 3, good distension. Radiological confidence is the opinion of the observer about whether the lumen and wall of the GI segment can be evaluated with confidence in regard to the luminal distension and technical aspects. Grading of radiological confidence was scored as 0: poor, 1: good, 2: excellent.

## Statistical analysis

Age values were reported as median (minimum: maximum) values and compared between groups using the Mann-Whitney *U* test. Raters' scores were compared between groups by using the Pearson  $\chi^2$  test and Freeman-Halton test. A weighted kappa ( $\kappa$ ) statistic with 95% confidence intervals was calculated for assessment of inter-reader and intra-reader reliability. Kappa coefficient less than 0.20 was interpreted as poor agreement, 0.21 to 0.40 as fair agreement, 0.41 to 0.60 as moderate agreement, 0.61 to 0.80 as good agreement, and 0.81 to 1.00 as very good agreement [7]. SPSS software version 20.0 was used for performing statistical analysis. Statistically, significance was set at  $p < 0.05$ .

## Results

The demographic characteristics of the patients were as follows; the median age of Group 1 and 2 was 53.50 (18-84) and 50.50 (22-84), respectively. Fifty-five patients were male (61.1%) and 35 were female (38.9%) in Group 1. Thirty-six

of patients were male (64.8%) and 19 were female (35.2%) in Group 2. There was no significant difference between the groups in terms of age ( $p = 0.184$ ) and gender ( $p = 0.657$ ).

Inflammatory bowel disease was detected in 13 patients, four of them had an enteric fistula, and one of them had a perianal fistula. GI tract tumour was detected in 12 patients. One of them was histopathologically diagnosed with FAP-associated desmoid tumour. A postoperative fistula between neobladder-ileum was depicted in a patient, whose CTE was performed for postoperative imaging.

Five patients could not drink all of the mixture because of nausea or the taste of the mixture, and two patients had diarrhoea in Group 1. Three patients could not drink all of the mixture because of nausea or the taste of the mixture, one patient vomited, and two patients had diarrhoea in Group 2. In general, the tolerability of the mixture was high. These adverse effects regressed within 24 h.

In general, inter-reader reliabilities of distension and for radiological confidence scores were moderate or good

for both groups and gastrointestinal segments ( $p < 0.001$ , Table 1; Figures 1 and 2). Lower agreement values were detected for duodenum and jejunum scores. At the same time, the best  $\kappa$  values were obtained in sigmoid colon assessments (Table 1).

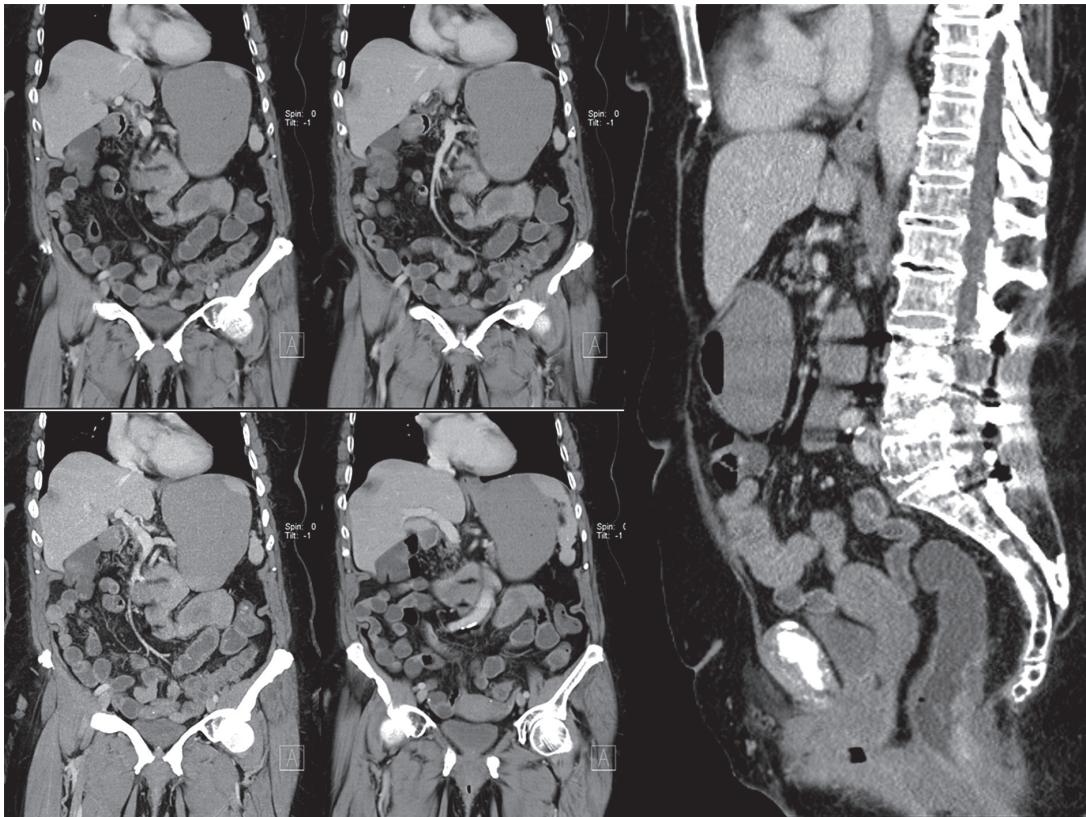
According to distension scores of reader 1, Group 2 showed better results in all of the segments than Group 1, except for the duodenum, where no significant difference was observed between the groups (Table 2). The confidence scoring of the reader also showed similar results. The new mixture was more successful in all of the segments except for the duodenum and jejunum, where no significant difference was observed between the groups (Table 3, Figure 3).

Group 2 showed better results than Group 1 for ileum and colonic segments, according to the distension and confidence scorings of reader 2. Although no significant difference was found for the duodenum and jejunum, good distension and confidence agreements were observed for these segments (Table 4).

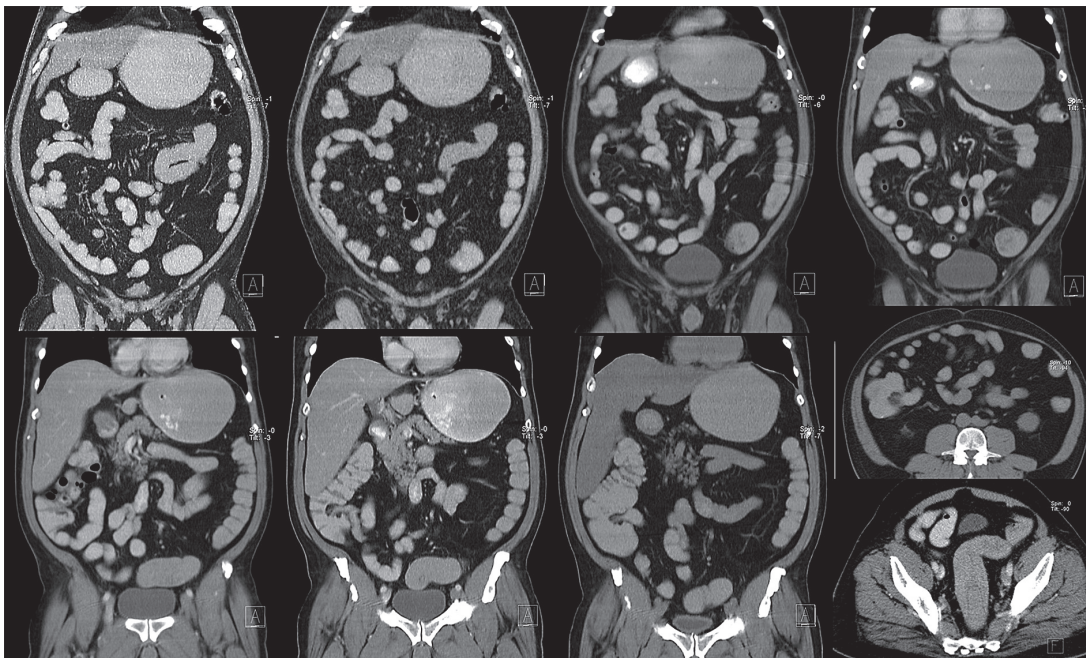
**Table 1.** Inter-reader reliabilities of distension and radiological confidence scores for the groups

	Distension			Radiological confidence		
	Rater 1 – rater 2			Rater 1 – rater 2		
	$\kappa$	95% CI	$p$	$\kappa$	95% CI	$p$
<b>Group 1 (n = 91)</b>						
Stomach	0.62	0.48-0.76	< 0.001	0.84	0.67-1.00	< 0.001
Duodenum	0.59	0.46-0.73	< 0.001	0.68	0.53-0.83	< 0.001
Jejunum	0.52	0.39-0.65	< 0.001	0.61	0.47-0.75	< 0.001
Ileum	0.47	0.35-0.60	< 0.001	0.61	0.46-0.75	< 0.001
Ileocecal area	0.61	0.47-0.74	< 0.001	0.53	0.39-0.67	< 0.001
Cecum	0.73	0.58-0.87	< 0.001	0.75	0.59-0.91	< 0.001
Ascending colon	0.73	0.59-0.86	< 0.001	0.90	0.75-1.00	< 0.001
Transverse colon	0.69	0.56-0.82	< 0.001	0.90	0.75-1.00	< 0.001
Descending colon	0.75	0.60-0.89	< 0.001	0.85	0.69-1.00	< 0.001
Sigmoid	0.91	0.76-1.00	< 0.001	0.90	0.72-1.00	< 0.001
Rectum	0.88	0.73-1.00	< 0.001	0.91	0.75-1.00	< 0.001
<b>Group 2 (n = 54)</b>						
Stomach	0.91	0.69-1.00	< 0.001	0.60	0.43-0.77	< 0.001
Duodenum	0.44	0.27-0.62	< 0.001	0.45	0.30-0.60	< 0.001
Jejunum	0.46	0.28-0.64	< 0.001	0.63	0.43-0.82	< 0.001
Ileum	0.64	0.45-0.84	< 0.001	0.69	0.45-0.83	< 0.001
Ileocecal area	0.22	0.03-0.42	0.013	0.66	0.46-0.87	< 0.001
Cecum	0.37	0.17-0.56	< 0.001	0.49	0.30-0.69	< 0.001
Ascending colon	0.46	0.29-0.63	< 0.001	0.70	0.48-0.92	< 0.001
Transverse colon	0.59	0.42-0.76	< 0.001	0.77	0.55-0.99	< 0.001
Descending colon	0.71	0.53-0.90	< 0.001	0.89	0.66-1.00	< 0.001
Sigmoid	0.79	0.60-0.97	< 0.001	0.95	0.72-1.00	< 0.001
Rectum	0.72	0.52-0.92	< 0.001	0.86	0.63-1.00	< 0.001





**Figure 1.** Computed tomography enterography (CTE), obtained with lactulose and water the new mixture, in a 66-year-old woman with elevated CEA levels and abdominal pain. In this patient, magnetic resonance elastography examination was not performed due to lumbar level metallic screws, and therefore CTE was performed. There is no abnormality in bowels or mesentery. Distension and radiological confidence scores were good to moderate for all segments



**Figure 2.** Computed tomography enterography, obtained with the new mixture, in a 65-year-old man with abdominal discomfort. These images reveal no abnormalities within the GIS or in the adjacent mesentery. Bowel wall thicknesses are normal, and there are good to excellent distention scores for all segments

According to the intra-reader agreement analyses of reader 2, there were excellent agreement values for each segment for all cases (Table 5). Lower agreement values

were detected for duodenum and jejunum segments. At the same time, the best  $\kappa$  values were obtained in sigmoid colon and rectum assessments (Table 5).

Table 2. Distension scores of rater 1

Distension – rater 1		Collapsed	Moderate	Good	Excellent	p-value
Stomach	Group 1 (n = 90)	5 (5.6)	11 (12.2)	28 (31.1)	46 (51.1)	0.007
	Group 2 (n = 52)	1 (1.9)	1 (1.9)	9 (17.3)	41 (78.8)	
Duodenum	Group 1 (n = 83)	20 (24.1)	31 (37.3)	27 (32.5)	5 (6)	0.124
	Group 2 (n = 53)	8 (15.1)	28 (52.8)	11 (20.8)	6 (11.3)	
Jejunum	Group 1 (n = 91)	16 (17.6)	39 (42.9)	27 (29.7)	9 (9.9)	0.043
	Group 2 (n = 53)	2 (3.8)	27 (50.9)	14 (26.4)	10 (18.9)	
Ileum	Group 1 (n = 91)	9 (9.9)	49 (53.8)	24 (26.4)	9 (9.9)	< 0.001
	Group 2 (n = 53)	0 (0)	14 (26.4)	22 (41.5)	17 (32.1)	
Ileocecal area	Group 1 (n = 89)	15 (16.9)	37 (41.6)	22 (24.7)	15 (16.9)	< 0.001
	Group 2 (n = 46)	0 (0)	5 (10.2)	13 (26.5)	31 (63.3)	
Cecum	Group 1 (n = 90)	6 (6.7)	55 (61.1)	12 (13.3)	17 (18.9)	< 0.001
	Group 2 (n = 48)	0 (0)	2 (4.2)	8 (16.7)	38 (79.2)	
Ascending colon	Group 1 (n = 91)	11 (12.1)	57 (62.6)	8 (8.8)	15 (16.5)	< 0.001
	Group 2 (n = 48)	2 (4.2)	3 (6.3)	11 (22.9)	32 (66.7)	
Transverse colon	Group 1 (n = 91)	24 (26.4)	44 (48.4)	14 (15.4)	9 (9.9)	< 0.001
	Group 2 (n = 48)	4 (8.3)	5 (10.4)	19 (39.6)	20 (41.7)	
Descending colon	Group 1 (n = 91)	44 (48.4)	26 (26.6)	14 (15.4)	7 (7.7)	< 0.001
	Group 2 (n = 48)	6 (12.5)	9 (18.8)	20 (41.7)	13 (27.1)	
Sigmoid	Group 1 (n = 85)	33 (38.8)	31 (36.5)	17 (20)	4 (4.7)	< 0.001
	Group 2 (n = 49)	6 (12.2)	14 (28.6)	14 (28.6)	15 (30.6)	
Rectum	Group 1 (n = 84)	23 (27.4)	40 (47.6)	14 (16.7)	7 (8.3)	< 0.001
	Group 2 (n = 48)	4 (8.3)	10 (20.8)	11 (22.9)	23 (47.9)	

Values expressed as n (%)

## Discussion

Our results showed that the new mixture was significantly more successful than the lactulose-water mixture according to distension and radiological confidence scores. We also observed adequate distension in colonic segments to provide optimal evaluation of colonic involvement in inflammatory diseases without the need for extra contrast agent administration. We demonstrated that the new mixture can also be used in MRE and provide adequate luminal distension [8]. Therefore, MRI can be preferred for imaging the colonic segments with late images.

There were variations in the distension scores of the intestinal segments, which might be a consequence of the variations in the intestinal motility amongst the patients. Drinking 250–500 ml of water in addition to the mixture just before the imaging can be useful for stomach distension or obtaining late-phase additional images can increase the colonic distension. The imaging protocol can be arranged according to the pre-diagnosis or the history of the patient.

For the most part, intra- and inter-reader reliabilities were good for the groups. Lower agreement values were detected for duodenum and jejunum scores, and the best

$\kappa$  values were obtained in sigmoid colon assessments. This situation proves that the CTE technique with the new mixture is effective and reliable. The reason for the low agreement values in duodenum and jejunum may be the faster OCA discharge of these segments. If any abnormality is investigated in these regions, we think that additional fluid intake will increase the efficacy and/or reliability before the CTE.

CTE has become one of the most important imaging modalities for small bowel imaging. Endoscopy-colonoscopy, capsule endoscopy, small bowel follow-through, conventional/CT/MR enteroclysis, MRE are the other imaging techniques for evaluating small bowel diseases.

Endoscopic techniques can provide mucosal visualisation, but extra-intestinal structures cannot be evaluated. Jejunum and ileum cannot be visualised by endoscopy or colonoscopy. Also, capsule endoscopy is contraindicated for bowel obstruction and stricture suspected cases [9–11]. Enteroclysis-based techniques are centred on OCA administration via nasojejunal intubation [5]. Therefore, it is an invasive method, which provides adequate bowel distension. Also, additional ionising radiation exposure due to duodenal catheter placement is an additional disadvantage of the enteroclysis [11,12].



**Table 3.** Radiological confidence scores of rater 1

Confidence – rater 1		Poor	Good	Excellent	p-value
Stomach	Group 1 (n = 90)	7 (7.8)	18 (20)	65 (72.2)	0.014
	Group 2 (n = 52)	2 (3.8)	2 (3.8)	48 (92.3)	
Duodenum	Group 1 (n = 83)	28 (33.7)	38 (45.8)	17 (20.5)	0.743
	Group 2 (n = 53)	21 (39.6)	21 (39.6)	11 (20.8)	
Jejunum	Group 1 (n = 91)	22 (24.2)	44 (48.4)	25 (27.5)	0.532
	Group 2 (n = 53)	10 (18.9)	24 (45.3)	19 (35.8)	
Ileum	Group 1 (n = 91)	18 (19.8)	48 (52.7)	25 (27.5)	< 0.001
	Group 2 (n = 53)	1 (1.9)	16 (30.2)	36 (67.9)	
Ileocecal area	Group 1 (n = 89)	22 (24.7)	36 (40.4)	31 (34.8)	< 0.001
	Group 2 (n = 49)	0 (0)	5 (10.2)	44 (89.8)	
Cecum	Group 1 (n = 90)	6 (6.7)	58 (64.4)	26 (28.9)	< 0.001
	Group 2 (n = 48)	0 (0)	3 (6.3)	45 (93.8)	
Ascending colon	Group 1 (n = 91)	14 (15.4)	59 (64.8)	18 (19.8)	< 0.001
	Group 2 (n = 48)	3 (6.3)	6 (12.5)	39 (81.3)	
Transverse colon	Group 1 (n = 91)	26 (28.6)	49 (53.8)	16 (17.6)	< 0.001
	Group 2 (n = 48)	4 (8.3)	7 (14.6)	37 (77.1)	
Descending colon	Group 1 (n = 91)	44 (48.4)	32 (35.2)	15 (16.5)	< 0.001
	Group 2 (n = 48)	6 (12.5)	12 (25)	30 (62.5)	
Sigmoid	Group 1 (n = 85)	35 (41.2)	37 (43.5)	13 (15.3)	< 0.001
	Group 2 (n = 49)	6 (12.2)	14 (28.6)	29 (59.2)	
Rectum	Group 1 (n = 84)	25 (29.8)	46 (54.8)	13 (15.5)	< 0.001
	Group 2 (n = 48)	4 (8.3)	10 (20.8)	34 (70.8)	

Values expressed as n (%)

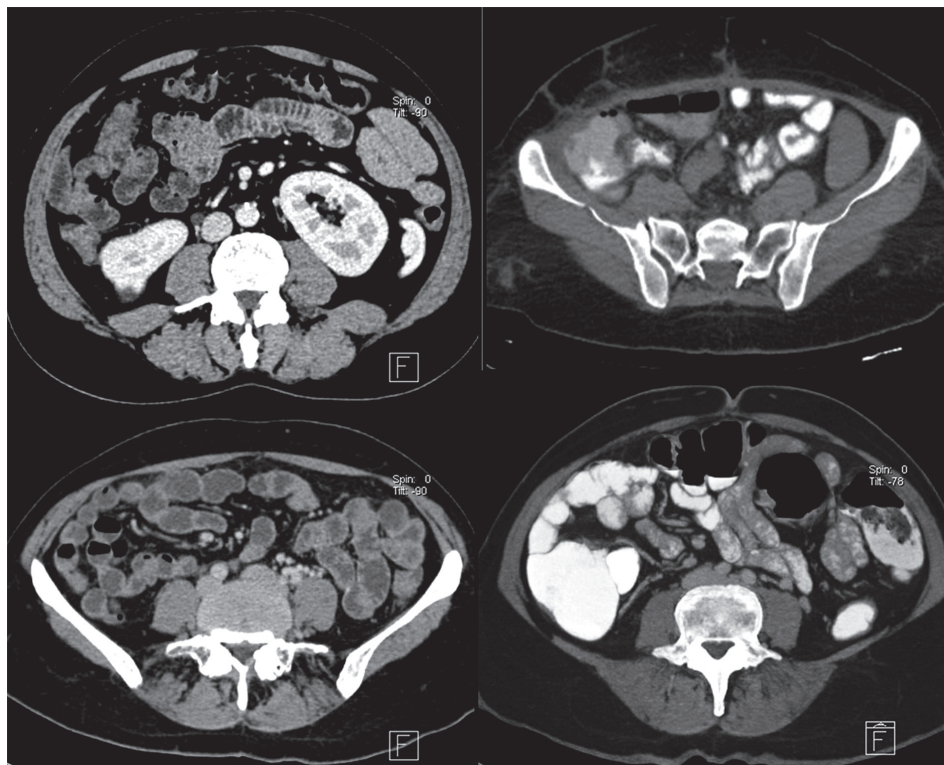
**Figure 3.** Computed tomography enterography images of four different patients. Upper-line images belong to Group 1 (lactulose and water mixture). Lower line images belong to Group 2 (the new mixture). The new mixture seems to be more effective in providing adequate ileal and colonic distention

Table 4. Distension and radiological confidence scores of rater 2

Distension – rater 2		Collapsed	Moderate	Good	Excellent	p-value
Stomach	Group 1 (n = 89)	5 (5.6)	11 (12.4)	26 (29.2)	47 (52.8)	0.003
	Group 2 (n = 52)	1 (1.9)	1 (1.9)	7 (13.5)	43 (87.2)	
Duodenum	Group 1 (n = 83)	5 (6)	35 (42.2)	38 (45.8)	5 (6)	0.513
	Group 2 (n = 53)	1 (1.9)	26 (49.1)	21 (39.6)	5 (9.4)	
Jejunum	Group 1 (n = 91)	5 (5.5)	34 (37.4)	36 (39.6)	16 (17.6)	0.403
	Group 2 (n = 53)	1 (1.9)	15 (28.3)	28 (52.8)	9 (17)	
Ileum	Group 1 (n = 91)	1 (1.1)	29 (31.9)	52 (57.1)	9 (9.9)	0.007
	Group 2 (n = 53)	0 (0)	7 (13.2)	32 (60.4)	14 (26.4)	
Ileocecal area	Group 1 (n = 89)	7 (7.9)	34 (38.2)	41 (46.1)	7 (7.9)	< 0.001
	Group 2 (n = 46)	0 (0)	1 (2)	30 (61.2)	18 (36.7)	
Cecum	Group 1 (n = 90)	6 (6.7)	41 (45.6)	30 (33.3)	13 (14.4)	< 0.001
	Group 2 (n = 48)	0 (0)	3 (6.3)	23 (47.9)	22 (45.8)	
Ascending colon	Group 1 (n = 91)	10 (11)	45 (49.5)	27 (29.7)	9 (9.9)	< 0.001
	Group 2 (n = 48)	2 (4.2)	3 (6.3)	28 (58.3)	15 (31.3)	
Transverse colon	Group 1 (n = 91)	18 (19.8)	42 (46.2)	25 (27.5)	6 (6.6)	< 0.001
	Group 2 (n = 48)	4 (8.3)	5 (10.4)	30 (62.5)	9 (18.8)	
Descending colon	Group 1 (n = 91)	34 (37.4)	34 (37.4)	20 (22)	3 (3.3)	< 0.001
	Group 2 (n = 48)	4 (8.3)	10 (20.8)	27 (56.3)	7 (14.6)	
Sigmoid	Group 1 (n = 85)	30 (35.3)	33 (38.8)	19 (22.4)	3 (3.5)	< 0.001
	Group 2 (n = 49)	5 (10.2)	14 (28.6)	22 (44.9)	8 (16.3)	
Rectum	Group 1 (n = 84)	21 (25)	42 (50)	17 (20.2)	4 (4.8)	< 0.001
	Group 2 (n = 48)	3 (6.3)	11 (22.9)	20 (41.7)	14 (29.2)	
Confidence – rater 2		Poor	Good	Excellent	p-value	
Stomach	Group 1 (n = 89)	6 (6.7)	26 (29.2)	57 (64)	0.057	
	Group 2 (n = 52)	1 (1.9)	8 (15.4)	43 (82.7)		
Duodenum	Group 1 (n = 83)	17 (20.5)	51 (61.4)	15 (18.1)	0.059	
	Group 2 (n = 53)	3 (5.7)	39 (73.6)	11 (20.8)		
Jejunum	Group 1 (n = 91)	8 (8.8)	60 (65.9)	23 (25.3)	0.409	
	Group 2 (n = 53)	2 (3.8)	34 (64.2)	17 (32.1)		
Ileum	Group 1 (n = 91)	7 (7.7)	64 (70.3)	20 (22)	< 0.001	
	Group 2 (n = 53)	0 (0)	25 (47.2)	28 (52.8)		
Ileocecal area	Group 1 (n = 89)	10 (11.2)	62 (69.7)	17 (19.1)	< 0.001	
	Group 2 (n = 49)	0 (0)	11 (22.4)	38 (77.6)		
Cecum	Group 1 (n = 90)	9 (10)	60 (66.7)	21 (23.3)	< 0.001	
	Group 2 (n = 48)	0 (0)	9 (18.8)	39 (81.3)		
Ascending colon	Group 1 (n = 91)	13 (14.3)	62 (68.1)	16 (17.6)	< 0.001	
	Group 2 (n = 48)	2 (4.2)	14 (29.2)	32 (66.7)		
Transverse colon	Group 1 (n = 91)	23 (25.3)	55 (60.4)	13 (14.3)	< 0.001	
	Group 2 (n = 48)	4 (8.3)	15 (31.3)	29 (60.4)		
Descending colon	Group 1 (n = 91)	41 (45.1)	40 (44)	10 (11)	< 0.001	
	Group 2 (n = 48)	5 (10.4)	16 (33.3)	27 (56.3)		
Sigmoid	Group 1 (n = 85)	35 (41.2)	41 (48.2)	9 (10.6)	< 0.001	
	Group 2 (n = 49)	6 (12.2)	16 (32.7)	27 (55.1)		
Rectum	Group 1 (n = 84)	23 (27.4)	51 (60.7)	10 (11.9)	< 0.001	
	Group 2 (n = 48)	3 (6.3)	13 (27.1)	32 (66.7)		

Values were expressed as n (%)

**Table 5.** Intra-reader reliabilities of distension and radiological confidence scores of reader 2

Rater 2	Distension			Confidence		
	$\kappa$	95% CI	$p$	$\kappa$	95% CI	$p$
Stomach	0.92	0.92-1.00	< 0.001	0.97	0.83-1.00	< 0.001
Duodenum	0.87	0.75-0.99	< 0.001	0.86	0.74-0.98	< 0.001
Jejunum	0.87	0.75-0.98	< 0.001	0.85	0.72-0.98	< 0.001
Ileum	0.88	0.76-0.99	< 0.001	0.87	0.74-1.00	< 0.001
Ileocecal area	0.89	0.77-1.00	< 0.001	0.87	0.74-1.00	< 0.001
Cecum	0.91	0.79-1.00	< 0.001	0.94	0.80-1.00	< 0.001
Ascending colon	0.88	0.77-1.00	< 0.001	0.97	0.84-1.00	< 0.001
Transverse colon	0.87	0.76-0.98	< 0.001	0.94	0.82-1.00	< 0.001
Descending colon	0.87	0.76-0.98	< 0.001	0.96	0.84-1.00	< 0.001
Sigmoid	0.94	0.82-1.00	< 0.001	0.98	0.85-1.00	< 0.001
Rectum	0.95	0.83-1.00	< 0.001	0.98	0.85-1.00	< 0.001

CTE is a non-invasive, well-tolerated method that can evaluate luminal, mural, and extra-intestinal abnormalities. It provides high resolution, multiplanar reformatted images [13-15]. CTE is the fastest and the most appropriate imaging modality for evaluating active inflammatory bowel disease and its complications [16]. The only disadvantage of this technique is the radiation exposure [17]. MRE overcomes this disadvantage, so it is preferred for follow-up imaging of inflammatory bowel disease in paediatric patients [18,19]. On the other hand, MRE is more time consuming and expensive. The image quality is also variable in MR imaging. CTE can provide better image quality in patients who cannot hold their breath during imaging. The radiation exposure dose is the same as abdominal-pelvic venous phase CT, and it can be reduced by using a dose modulation option and advanced reconstruction techniques [20].

Inadequate luminal distension can cause misinterpretation such as wall thickening, abnormal mural enhancement, or obscuring of intraluminal lesions [5,6]. Therefore, obtaining optimal luminal distension is crucial for a good-quality CTE. OCAs used for this purpose are classified into two groups such as negative/neutral and positive. Water, lactulose, oil emulsion, Mucofalk, methylcellulose, polyethylene glycol (PEG), mannitol, locust bean gum, swollen fibre laxatives, and sorbitol are negative OCAs. Water with iodine-based contrast (ultra-low dose) agent mixtures are positive OCAs [6,10,21,22].

Negative OCAs increases the visibility of mural enhancement by increasing the contrast difference between the lumen and the intestinal wall [6,9,23-28]. Positive OCAs help in the differentiation of intraluminal versus extraluminal pathologies and make the extra-intestinal fluid collections more apparent. They can obscure mural and mucosal enhancement in inflammatory bowel diseases or obscure GI tract bleeding [29,30]. Also, if the images are obtained in the arterial phase (CT angiography),

these contrast agents will create difficulty in the evaluation of vascular structures [6,28,31-38]. Positive OCAs are useful for detecting the localisation of fistulas and obstruction [29].

Our new mixture is a negative OCA. If the iodine-based contrast media is mixed into the OCA, the final mixture also shows characteristics of positive OCAs, which aids in assessing extra-luminal pathologies such as fluid collections (e.g. abscess, cystic lesions, etc.), without obscuring mural or mucosal enhancement. Lactulose, sorbitol, and methylcellulose inhibit water absorption. Methylcellulose is the one with the fewest adverse effects amongst the OCAs, and hence it increases the luminal distension without increasing the adverse effects.

The optimal volume of OCA, considering adequate luminal distension, patient tolerance, and adverse effects have been discussed in the literature [39]. Maglinte *et al.* observed that 1.5 l was not enough for small bowel distension in active inflammatory bowel disease assessment, but they also mentioned that they could have obtained good-quality images with fewer volumes [40]. Kuehle *et al.* used a 1 l solution of 2.5% mannitol and 0.2% locust bean gum in their study and observed an increase in adverse effects but not in distension when they increased the volume to 1200-1500 ml [41]. Boudiaf *et al.* performed CT enteroclysis with 2 l water and observed poor distension in only two of the 107 patients in their study [24]. The amount of OCA used in studies ranges between 1300 and 2000 ml [28,42-44], so we used 1500 ml of OCA mixture in our study.

The limitations of the study were as follows: not all of the patients succeeded in drinking all of the solutions – some of them vomited before the imaging, but this a handicap of all of the OCAs discussed in the studies. We could only compare our mixture with water-lactulose solution because most of the other OCAs are not readily available in our country.



## Conclusions

The new mixture can provide good-quality images with optimal luminal distension. Inter- and intra-reader reliabilities of the new mixture were good or excellent (especially for ileum and colonic assessments). The new mixture is more efficient and reliable for ileum and colon. We think that using the new mixture can increase the radiological confidence in CTE evaluations.

## Acknowledgments

We gratefully thank Doctor MG. Kartal and our technicians for their significant contributions.

## Disclosure

The authors declare no conflicts of interest.

## References

1. Evrimler S, Algin O. MR enterography with oral contrast agent composed of methylcellulose, low-dose barium sulfate, sorbitol, and lactulose: assessment of diagnostic performance, reliability, image quality, and patient tolerance. *Clin Imaging* 2016; 40: 523-530.
2. Algin O, Evrimler S, Ozmen E, Metin M, Ersoy O, Karaoglanoglu M. Desmoid tumor associated with familial adenomatous polyposis: evaluation with 64-detector CT enterography. *Iran J Radiol* 2012; 9: 32.
3. Sheedy SP, Kolbe AB, Fletcher JG, Fidler JL. Computed tomography enterography. *Radiol Clin North Am* 2018; 56: 649-670.
4. Algin O, Turkbey B, Ozmen E, Algin E. Magnetic resonance enterography findings of chronic radiation enteritis. *Cancer Imaging* 2011; 11: 189-194.
5. Masselli G, Gualdi G. Evaluation of small bowel tumors: MR enteroclysis. *Abdom Imaging* 2010; 35: 23-30.
6. Paulsen SR, Huprich JE, Fletcher JG, et al. CT enterography as a diagnostic tool in evaluating small bowel disorders: review of clinical experience with over 700 cases. *Radiographics* 2006; 26: 641-657.
7. Portney LG, Watkins MP. *Foundations of Clinical Research: Applications to Practice*. 2nd ed. Prentice Hall Health, Upper Saddle River 1999.
8. Algin O, Evrimler S, Ozmen E, et al. A novel biphasic oral contrast solution for enterographic studies. *J Comput Assist Tomogr* 2013; 37: 65-74.
9. Hara AK, Leighton JA, Heigh RI, et al. Crohn disease of the small bowel: preliminary comparison among CT enterography, capsule endoscopy, small-bowel follow-through, and ileoscopy. *Radiology* 2006; 238: 128-134.
10. Triester SL, Leighton JA, Leontiadis GI, et al. A meta-analysis of the yield of capsule endoscopy compared to other diagnostic modalities in patients with non-structuring small bowel Crohn's disease. *Am J Gastroenterol* 2006; 101: 954-964.
11. Markova I, Kluchova K, Zboril R, Mashlan M, Herman M. Small bowel imaging-still a radiologic approach. *Biomed Pap Med Fac Univ Palacky Olomouc Czech Repub* 2010; 154: 123-132.
12. Cronin CG, Lohan DG, Browne AM, Roche C, Murphy JM. Does MRI with oral contrast medium allow single-study depiction of inflammatory bowel disease enteritis and colitis? *Eur Radiol* 2010; 20: 1667-1674.
13. Hara AK, Walker FB, Silva AC, Leighton JA. Preliminary estimate of triphasic CT enterography performance in hemodynamically stable patients with suspected gastrointestinal bleeding. *Am J Roentgenol* 2009; 193: 1252-1260.
14. Jaffe TA, Martin LC, Miller CM, et al. Abdominal pain: coronal reformations from isotropic voxels with 16-section CT – reader lesion detection and interpretation time. *Radiology* 2007; 242: 175-181.
15. Jaffe TA, Nelson RC, Johnson GA, et al. Optimization of multiplanar reformations from isotropic data sets acquired with 16-detector row helical CT scanner. *Radiology* 2006; 238: 292-299.
16. Kim DH, Carucci LR, Baker ME, et al. ACR Appropriateness Criteria Crohn disease. *J Am Coll Radiol* 2015; 12: 1048-57.e4.
17. Lee SS, Ha HK, Yang SK, et al. CT of prominent pericolic or perienteric vasculature in patients with Crohn's disease: correlation with clinical disease activity and findings on barium studies. *Am J Roentgenol* 2002; 179: 1029-1036.
18. Fletcher J. CT enterography technique: theme and variations. *Abdom Imaging* 2009; 34: 283-288.
19. Siddiki HA, Fidler JL, Fletcher JG, et al. Prospective comparison of state-of-the-art MR enterography and CT enterography in small-bowel Crohn's disease. *Am J Roentgenol* 2009; 193: 113-121.
20. Elsayes KM, Al-Hawary MM, Jagdish J, Ganesh HS, Platt JF. CT enterography: principles, trends, and interpretation of findings. *Radiographics* 2010; 30: 1955-1970.
21. Sinha R, Verma R, Verma S, Rajesh A. MR enterography of Crohn disease: part 1, rationale, technique, and pitfalls. *Am J Roentgenol* 2011; 197: 76-79.
22. Thomsen HS, Morcos SK, Almén T, et al. Nephrogenic systemic fibrosis and gadolinium-based contrast media: updated ESUR Contrast Medium Safety Committee guidelines. *Eur Radiol* 2013; 23: 307-318.
23. Arslan H, Etlik O, Kayan M, Harman M, Tuncer YI, Temizöz O. Peroral CT enterography with lactulose solution: preliminary observations. *Am J Roentgenol* 2005; 185: 1173-1179.
24. Boudiaf M, Jaff A, Soyer P, Bouhnik Y, Hamzi L, Rymer R. Small-bowel diseases: prospective evaluation of multi-detector row helical CT enteroclysis in 107 consecutive patients. *Radiology* 2004; 233: 338-344.
25. Megibow AJ, Babb JS, Hecht EM, et al. Evaluation of bowel distention and bowel wall appearance by using neutral oral contrast agent for multi-detector row CT. *Radiology* 2006; 238: 87-95.
26. Raptopoulos V, Schwartz R, McNicholas M, Movson J, Pearlman J, Joffe N. Multiplanar helical CT enterography in patients with Crohn's disease. *AJR Am J Roentgenol* 1997; 169: 1545-1550.
27. Reittner P, Goritschnig T, Petritsch W, et al. Multiplanar spiral CT enterography in patients with Crohn's disease using a negative oral

- contrast material: initial results of a noninvasive imaging approach. *Eur Radiol* 2002; 12: 2253-2257.
28. Wold PB, Fletcher JG, Johnson CD, Sandborn WJ. Assessment of small bowel Crohn disease: noninvasive peroral CT enterography compared with other imaging methods and endoscopy – feasibility study. *Radiology* 2003; 229: 275-281.
  29. Hong SS, Kim AY, Byun JH, et al. MDCT of small-bowel disease: value of 3D imaging. *Am J Roentgenol* 2006; 187: 1212-1221.
  30. Macari M, Megibow AJ, Balthazar EJ. A pattern approach to the abnormal small bowel: observations at MDCT and CT enterography. *Am J Roentgenol* 2007; 188: 1344-1355.
  31. Angelelli G, Macarini L. CT of the bowel: use of water to enhance depiction. *Radiology* 1988; 169: 848-849.
  32. Bender GN, Timmons JH, Williard WC, Carter J. Computed tomographic enteroclysis: one methodology. *Invest Radiol* 1996; 31: 43-49.
  33. Gourtsoyiannis N, Papanikolaou N, Grammatikakis J, Maris T, Prassopoulos P. MR enteroclysis protocol optimization: comparison between 3D FLASH with fat saturation after intravenous gadolinium injection and true FISP sequences. *Eur Radiol* 2001; 11: 908-913.
  34. Horton KM, Fishman EK. The current status of multidetector row CT and three-dimensional imaging of the small bowel. *Radiol Clin North Am* 2003; 41: 199-212.
  35. Lauenstein TC, Schneemann H, Vogt FM, Herborn CU, Ruhm SG, Debatin JF. Optimization of oral contrast agents for MR imaging of the small bowel. *Radiology* 2003; 228: 279-283.
  36. Maccioni F, Viscido A, Broglia L, et al. Evaluation of Crohn disease activity with magnetic resonance imaging. *Abdom Imaging* 2000; 25: 219-228.
  37. Mazzeo S, Caramella D, Battolla L, et al. Crohn disease of the small bowel: spiral CT evaluation after oral hyperhydration with isotonic solution. *J Comput Assist Tomogr* 2001; 25: 612-616.
  38. Rollandi G, Curone P, Biscaldi E, et al. Spiral CT of the abdomen after distention of small bowel loops with transparent enema in patients with Crohn's disease. *Abdom Imaging* 1999; 24: 544-549.
  39. Young B, Fletcher J, Paulsen S. Comparison of oral contrast agents for cross-sectional enterography: timing, small bowel distention and side effects. Society of Gastrointestinal Radiologists, San Antonio 2005.
  40. Maglante DD, Sandrasegaran K, Lappas JC, Chiorean M. CT enteroclysis. *Radiology* 2007; 245: 661-671.
  41. Kuehle CA, Ajaj W, Ladd SC, Massing S, Barkhausen J, Lauenstein TC. Hydro-MRI of the small bowel: effect of contrast volume, timing of contrast administration, and data acquisition on bowel distention. *Am J Roentgenol* 2006; 187: W375-385.
  42. Fidler JL, Guimaraes L, Einstein DM. MR imaging of the small bowel. *Radiographics* 2009; 29: 1811-1825.
  43. Kayhan A, Oommen J, Dahi F, Oto A. Magnetic resonance enterography in Crohn's disease: standard and advanced techniques. *World J Radiol* 2010; 2: 113-121.
  44. Schmidt S, Guibal A, Meuwly JY, et al. Acute complications of Crohn's disease: comparison of multidetector-row computed tomographic enterography with magnetic resonance enterography. *Digestion* 2010; 82: 229-238.