



Attachment efficiency of gold nanoparticles by Gram-positive and Gram-negative bacterial strains governed by surface charges

Wojciech Pajerski · Dorota Ochonska · Monika Brzywczy-Wloch · Paulina Indyka · Magdalena Jarosz · Monika Golda-Cepa · Zbigniew Sojka · Andrzej Kotarba 

Received: 16 April 2019 / Accepted: 22 July 2019 / Published online: 17 August 2019
© The Author(s) 2019

Abstract The interaction between metal nanoparticles and bacteria belongs to the central issues in a dynamically growing bionanotechnological research. Herein, we investigated the adhesion efficiency of gold nanoparticles (30 nm) for various bacterial strains, both Gram-positive (*Bacillus subtilis*, *Staphylococcus carnosus*) and Gram-negative (*Neisseria subflava*, *Stenotrophomonas maltophilia*). The thorough microscopic (SEM/TEM) observations revealed that the nanoparticles do not penetrate into the bacterial cells but adhere to the walls. Large differences in the adhered nanoparticles amount were observed for the investigated strains (*B. subtilis* >> *S. carnosus* > *N. subflava* > *S. maltophilia*). A direct correlation between the number of the attached nanoparticles and the ζ -potential of the bacterial strains was found, and the results were rationalized in terms of the DLVO model. The calculated DLVO energy profiles revealed that the activation barriers for the adhesion process are rather small (1.45–1.55 kT), and the primary energy minima of 120–170 kT are favorable for the effective adsorption process. The established linear correlation between the nanoparticles adhered to the cell surface and the size of the critical

volume around the bacterial cell, where the attraction forces dominate, implies that the observed dramatic differences in the attachment efficiency result from the availability of the nanoparticles in the critical volume of the surrounding suspensions. Owing to non-specific interactions governed by the ζ -potential mainly, the obtained results can be readily extended for the other bacteria–nanoparticle systems, providing a rational background for future advances in bacteria detection and thorough characterization via SERS method as well as for nanoparticles assemblies towards nanoelectronics.

Keywords Biointerface · Bacteria cell wall · Nanoparticles · Surface charge · Zeta potential · DLVO theory · Nanobiotechnology

Introduction

In the wide range of microorganisms, bacteria are extensively investigated for many decades in the context of their surface colonization ability, leading to the formation of biofilms and the associated hazard of infection (Donlan and Costerton 2002). Recently, there is a growing research interest in the interaction between bacteria and nanoparticles of various chemical nature (metallic, oxides, sulfates, etc.) (Barnes et al. 2013; von Moos et al. 2014; Calatayud et al. 2014). Such investigations have a strong impact in many areas of nanoscience, including toxicology, pharmacology, nanomedicine, biotechnology, environmental sciences, chemistry, and

W. Pajerski · P. Indyka · M. Jarosz · M. Golda-Cepa · Z. Sojka · A. Kotarba (✉)
Faculty of Chemistry, Jagiellonian University in Krakow,
Gronostajowa 2, 30-387 Krakow, Poland
e-mail: kotarba@chemia.uj.edu.pl

D. Ochonska · M. Brzywczy-Wloch
Department of Molecular Medical Microbiology, Chair of
Microbiology, Faculty of Medicine, Jagiellonian University
Medical College, Czysta 18, 31-121 Krakow, Poland

even geology (Rai et al. 2009; Nath and Banerjee 2013; Judy and Bertsch 2014; Wadhvani et al. 2016). Bacteria are unicellular prokaryotic organisms surrounded by the cell membrane, cell wall, and cell envelope in some cases (Silhavy et al. 2010). In general, there are three main morphological types of bacterial cells that can be distinguished: spheres (cocci), rods (bacilli), and spirals (spirilla) (Young 2006). Depending on the composition of their cell walls, bacteria are divided into two major categories: Gram-negative (G^-) and Gram-positive. In Fig. 1, simplified differences in the cell wall structure of those two groups are shown.

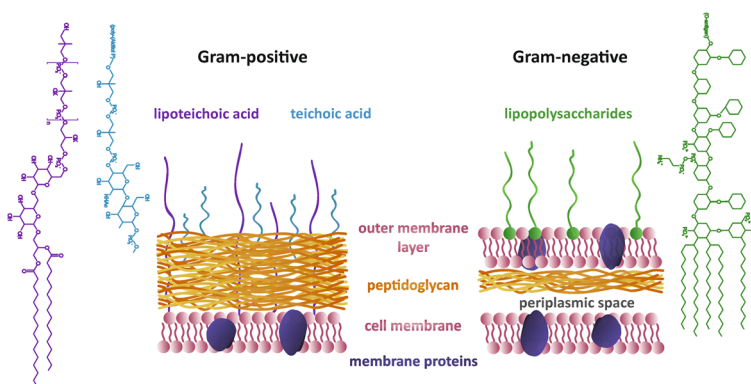
A major component of the bacterial cell walls, in both G^+ and G^- bacteria, is the polymer peptidoglycan. The G^+ bacteria have thick cell walls, which consist of a large multilayer region of peptidoglycan with a wall teichoic acid (WTA) and lipoteichoic acid (LTA), attached to the peptidoglycan layer and to the cell membrane, respectively. The G^- bacteria have a thin layer of the peptidoglycan, situated between the cell and outer membranes, in the region called periplasmic space (the specific feature of G^-), filled with gel-like periplasm. Instead of teichoic acids, the G^- bacteria synthesize lipopolysaccharides (LPS), which form distinct domains (marked in green) within the outer phospholipids bilayer (Fig. 1) (Malanovic and Lohner 2016). Bacterial cell wall plays a crucial role in the cell protection against the negative impact of physical, chemical, and biological factors, controlling the characteristic shape of the cells. The additional vital function of the cell walls associated with the adhesion to any surface owing to the presence of adhesins, i.e., specific macromolecules responsible for adhesive interactions at the interface (Moriarty et al. 2011; Braslavsky et al. 2016).

In the adhesion process, the molecular properties of the bacterial cell surface are of crucial importance.

Besides hydrophobicity, the surface charge defines the prime variable typically used for the evaluation of the bacterial adhesion process (Spriano et al. 2017). Usually, bacteria exhibit an overall negative charge when measured in water suspension at physiological pH. In the case of the G^+ bacteria, the phosphoryl groups located in the LTA and WTA tails play an important role in the generation of the net negative charge of the cells. For the G^- bacteria, the negative charge results from the ionization of the phosphoryl and 2-keto-3-deoxyoctonate carboxylate groups present in the LPS chains (Wilson et al. 2001). However, the surface charge measured as a ζ -potential (zeta potential) depends on the bacterial strain and its particular surface characteristics (Kłodzińska et al. 2010; Khelissa et al. 2017). The electrochemical behavior of bacterial cell surfaces is particularly important for the application of nanoparticles (NPs) as antimicrobial agents (Ramasamy et al. 2016; Mmola et al. 2016), in the detection of viruses, bacteria, and spores (Sajjanar et al. 2015; Donmez et al. 2017) or even for the production of NPs inside the microorganism (Nangia et al. 2009; Durán et al. 2011; Deplanche et al. 2012; Srivastava et al. 2013; Jung et al. 2018).

Following the rough definition (The European Commission 2011), objects are defined as NPs when their dimension is smaller than 100 nm. Owing to their high stability and spectacular catalytic and plasmonic behavior, one of the best characterized and intensively investigated are nanoparticles of gold (AuNPs) (Carrière 2012). Because of their biocompatibility, AuNPs are also widely investigated in medicine, including cancer therapies, pharmacology, and advanced diagnostics (Dykman and Khlebtsov 2011; Saha et al. 2012; Gatea et al. 2015; Sajjanar et al. 2015; Bozorgmehr et al. 2016). Bare AuNPs generally exhibit weak

Fig. 1 Differences between Gram-positive and Gram-negative bacterial cell walls (Lovering et al. 2010; Clifton et al. 2013)



antimicrobial properties (Zhang et al. 2015), but ones functionalized with antibiotics or other ligands they can be successfully used as targeting drug delivery systems (Pradeepa et al. 2016; Faisal et al. 2018), antimicrobial agents (Bresee et al. 2011; Li et al. 2014; Ramasamy et al. 2014), or for photothermal therapy and tissue imaging (Loeb et al. 2018; Yang et al. 2018; Zhu et al. 2018).

However, the growing applications of NPs unavoidably lead to their systematic accumulation in the environment. Although some studies suggest weak toxicity of AuNPs (Ramasamy et al. 2016; Faisal et al. 2018), the majority of scientific reports reveal negative impacts on aquatic organisms, mammals, and humans (Bar-Ilan et al. 2009; Bozich et al. 2014; von Moos et al. 2014; Aruoja et al. 2015; McCracken et al. 2016). Therefore, there is an urgent need to identify and quantify the principal parameters governing the NPs interaction with the biological surfaces such as bacterial cell walls (Xing et al. 2018). Most of the previous studies are focused on the interaction between NPs and bacteria, leading to an apoptotic disintegration of the bacterial cell walls (cells death) (Chwalibog et al. 2010; Miller et al. 2016; López-Lorente et al. 2019). Yet, we believe that such knowledge may be used for designing microorganism-based effective systems, not only for the mere capture of NPs from the environment but also for the development of new functionalities associated with a controlled dispersion of NPs of various size, shape, and chemical nature (Polish Patents Applications P.426130 from 29 June 2018 and P.424760 from 5 March 2018).

The aim of this study was to substantiate the interaction of the G+ and G- bacteria with the gold nanoparticles and to identify the key descriptors responsible for the nanoparticles attachment efficiency. The results are accounted for in terms of the DLVO (Derjaguin–Landau–Verwey–Overbeek) model.

Materials and methods

Bacterial strains

The reference strains used in the study were *Staphylococcus carnosus* DSM 20501 (Deutsche Sammlung von Mikroorganismen und Zellkulturen), *Stenotrophomonas maltophilia* ATCC®13636 (American Type Culture Collection), *Neisseria subflava* ATCC® 14221, and *Bacillus subtilis* ATCC® 6633. All selected for

investigation are environmental, non-pathogenic, and aerobic bacteria, and are used in a variety of applications.

Culture preparation

The strains were incubated in Bacto™ Tryptic Soy Broth (TSB, Becton Dickinson) for 24 h (*S. carnosus*, *B. subtilis*) or 48 h (*S. maltophilia*, *N. subflava*) at 37 °C under gentle shaking. Bacteria were harvested by centrifugation at 4200 rpm for 5 min and washed three times with deionized water. Afterwards, the cell pellets were re-suspended in deionized water and diluted to an optical density OD₆₀₀ of 0.5 corresponding to the cell concentration of $\sim 3 \times 10^8$ CFU/mL (colony forming units) according to McFarland standards. Bacterial suspensions were plated on agar plates and counted to confirm the cells concentration independently. The prepared suspensions ($\sim 3 \times 10^8$ CFU/mL) were used in all the protocols, described in details in the following subsections: “Characterization of bacterial zeta potential,” “Scanning electron microscopy,” “Transmission electron microscopy.”

Characterization of bacterial zeta potential

The zeta potential of the investigated bacteria in water suspensions was determined via electrophoretic light scattering in Zetasizer Nano ZS (Malvern Instruments, Malvern) equipment, always in the same conditions, i.e., temperature, growth phase of bacteria, preparation time, and pH. The ζ -potential value is an average of at least three independent experimental series for each bacterial strain (more than 15 independent measurements). The ζ -potential values of bacterial suspensions were measured before each experiment, following the protocols described in details in the “Scanning electron microscopy” and “Transmission electron microscopy” subsections.

Synthesis of gold nanoparticles

HAuCl₄ solution (99%) supplied by Sigma-Aldrich and trisodium citrate dihydrate (99%) supplied by Avantor Performance Materials Poland S.A. were used as substrates for the preparation of gold nanoparticles as described elsewhere in more detail (Bastús et al. 2011). Shortly, gold seeds were synthesized by injecting HAuCl₄ (1 mL, 25 mM) into sodium citrate (150 mL, 2.2 mM) at 100 °C. Once the synthesis was finished, the

reaction mixture was cooled down to 90 °C. Then, 1 mL of sodium citrate solution (60 mM) and once more 1 mL of a HAuCl₄ solution (25 mM) were sequentially added with the time interval of 2 min. The resulting particles were coated with negatively charged citrate ions (capping agent) and hence are well suspended in H₂O. After 30 min, the reaction was finished, and aliquots of 2 mL were extracted for further characterization by nanoparticle tracking analysis (NTA) and transmission electron microscopy (TEM).

Finally, the prepared suspension of AuNPs was contacted with various bacterial strains for 15 min, following the protocols described in details in the “[Scanning electron microscopy](#)” and “[Transmission electron microscopy](#)” subsections.

Nanoparticle tracking analysis

The AuNP size distribution was determined using the LM10 Nanosight instrument (Malvern Instruments Ltd) equipped with a sCMOS camera (Hamamatsu Photonics, Hamamatsu, Japan) and a 450-nm blue laser. The obtained data were processed with NTA software (version 3.1 Build 3.1.45). The samples were sonicated for 15 min before analysis. The viscosity settings for water were automatically corrected for the experiment temperature (22 °C). The size distribution was measured with the camera shutter setting of 1232 and the gain of 219. A single experiment consisted of 3 movies at 25 frames/s and a duration of 30 s.

Characterization of gold nanoparticles in suspension

The zeta potential (ζ -potential) of the suspended gold nanoparticles was measured via electrophoretic light scattering by means of a Zetasizer Nano ZS (Malvern Instruments). The pH of the suspension was 6.5.

Scanning electron microscopy

The investigated bacterial strains were cultured on a glass substrate and then fixed for the SEM observations according to the protocol described elsewhere (Chissoc et al. 1994; Fischer et al. 2012). Briefly, samples on a glass substrate were fixed in 3% buffered glutaraldehyde for 24 h, and then carefully washed two times with Dulbecco's Phosphate Buffered Saline (DPBS). They were next dehydrated in the water-alcohol solutions with gradually increasing ethanol concentration (50,

60, 70, 80, 90, 96, and 100%) for 10 min each. Finally, the samples were dried using hexamethyldisilazane (HMDS). The prepared samples were mounted on a SEM holder by using adhesive carbon tape and carbon conductive paint. Prior to the observations, the specimens were coated with a thin layer of gold (approximately 15 nm) with the use of sputter-coater (Quorum Q150T S).

For SEM observations of the bacteria coated with Au nanoparticles, the preparation procedure was simplified to avoid removal of the adsorbed NPs from the bacterial walls. Therefore, the bacteria were cultured on a conductive ITO (indium tin oxide) substrate, the supernatant was removed, and 1 mL of AuNP suspension was added. After 15 min of incubation (room temperature) with the AuNPs, the solution was removed, and the bacterial samples were dried in the air.

The samples were characterized with the use of the field-emission scanning electron microscope (FE-SEM, Hitachi S-4700). The SEM microphotographs were analyzed using the Java open-source ImageJ software 1.51 k (Eliceiri et al. 2012). The obtained images allowed for the evaluation of the average area of individual bacterial cells and the number of the adsorbed AuNPs. The quantification of the adsorption efficiency (expressed as the number of NPs per μm^2 of the bacterial surface area) was determined by analyzing at least ten bacterial cells from three independent experimental series for each of the investigated bacterial strain.

Transmission electron microscopy

Transmission electron microscopy (TEM) observations were carried out using a Tecnai Osiris instrument (FEI) with the X-FEG Schottky field emitter operated at an accelerating voltage of 200 kV. Samples for TEM characterization were prepared by the standard procedure described elsewhere (Romero-Brey and Bartenschlager 2015). The investigated bacterial strain suspensions (after the 15 min contact with the AuNPs suspension) were washed three times in DPBS, fixed in 3% buffered glutaraldehyde for 24 h. The pellets were washed three times in DPBS, rinsed with 1% osmium tetroxide solution in DPBS for 2 h, and washed again with DPBS. Samples were dehydrated in the water-alcohol solutions with gradually increasing ethanol concentration (50, 60, 70, 80, 90, 96, and 100%) for 15 min each. The pellets were rinsed with propylene oxide (20 min) and incubated in 1:1 propylene oxide/resin ratio overnight

(Durcupan, Sigma-Aldrich). Then, samples were incubated in 100% resin at 37 °C for 24 h and then 60 °C for 48 h. The samples were sectioned using an ultramicrotome (Leica) equipped with the glass-edged knife (Diatome). The ultrathin lamellas were placed onto Cu TEM slots with the carbon-coated membrane and stained with lead citrate and uranyl citrate for contrast enhancement.

Results and discussion

Bacteria characteristics

For the present study, only non-pathogenic bacteria, naturally occurring in the environment were used. The selected bacterial strains differ in their cell wall structure, zeta potential, cell morphology (spherical or rod-shaped), and growth kinetics (stationary phase after 24 or 48 h). The representative SEM microphotographs of the investigated bacterial cells are presented in Fig. 2.

In the upper panel, the groups of tested bacteria (*S. maltophilia*, *N. subflava*, *S. carnosus*, *B. subtilis*) are shown, whereas the lower panel illustrates the different morphologies of the corresponding single cells in more detail. *S. maltophilia* is a rod-shaped G⁻ aerobic and motile bacteria occurring naturally in soil, water, and plants. In line with the literature data, the estimated average length of a single cell ranges between 0.5 and 1.5 μm. *N. subflava* is a non-pathogenic G⁻, aerobic coccus, grouped in pairs (diplococci) with an average diameter in the range of 0.5–1 μm. *S. carnosus*, a typical

G⁺ coccus, is spherical in shape and forms grape-like clusters. The average size of a single cell ranges between 0.5 and 1.5 μm. Finally, *B. subtilis* is a G⁺ rod-shaped (1.5–3.0 μm) aerobic microorganism, which naturally occupied soil and plants. As a consequence of various size and morphology, the selected bacteria *N. subflava*, *S. carnosus*, *S. maltophilia*, *B. subtilis* occupy a significantly different surface area of a substrate: 0.64; 0.79; 1.43, and 1.48 μm², respectively.

Zeta-potentials of the bacterial strains

The interaction between bacteria and nanoparticles is mediated by electrostatic/dispersive forces between the bacteria and NP surface functional groups (Hwang et al. 2012). Therefore, sensible information about an average surface charge, crucial for the electrostatic interaction between nanoparticles and biological moieties, can be gained from the zeta potential values (Kłodzińska et al. 2010). Therefore, this parameter was measured for all the bacterial strains and AuNPs used in this study. The measured values of the ζ-potential of the bacteria suspended in deionized water at physiological pH value of 6.5 ± 0.1 are in the range from -41 mV (*B. subtilis*) to -37 mV (*S. carnosus*), whereas significantly higher values were determined for *N. subflava* (-30 mV) and *S. maltophilia* (-26 mV). The obtained results are in line with the reported zeta-potential for various bacterial strains, which changes from -3 to -50 mV (Ahimou et al. 2007; Nguyen et al. 2011; Hua et al. 2017). Since the actual value of ζ-potential strongly depends on the physicochemical conditions of the suspension, all the

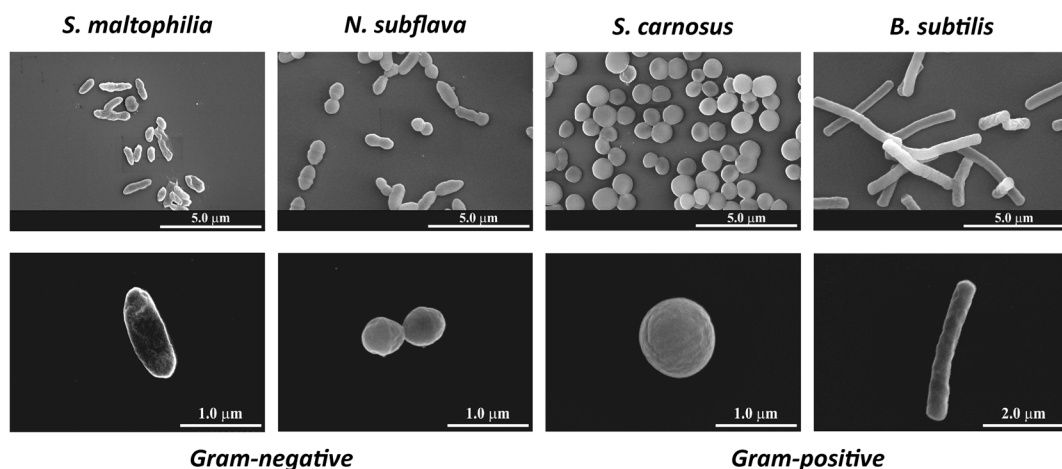


Fig. 2 SEM microphotographs of bacterial strains used in the study: *S. maltophilia*, *N. subflava*, *S. carnosus*, *B. subtilis* showing groups of cells (upper panel) and single cells (lower panel)

measurements were standardized with respect to the electrolyte type and concentration. Due to the different chemical nature of the G⁺ and G⁻ bacterial walls (see Fig. 1), the accumulated surfaces charges (both negative) are substantially different with the lower values obtained for the G⁺ strains. The observed differences in the ζ -potential have a strong impact on the bacterial adhesive properties, as discussed below.

Characteristics of the gold nanoparticles

In order to evaluate the adhesive properties of the investigated bacterial strains, monodisperse AuNPs were used. As described elsewhere (Hwang et al. 2012), size and surface charge of NPs are two main factors playing a critical role in their adsorption on the bacterial surface. As presented in Fig. 3, the average size of the synthesized AuNPs, assessed from the NTA measurements, was 50 nm (± 0.7 nm), and their average concentration was equal to 7.5×10^{12} /mL. For more in-depth insight into the size distribution and morphology, TEM observations were performed, and the results are presented in the insets of Fig. 3.

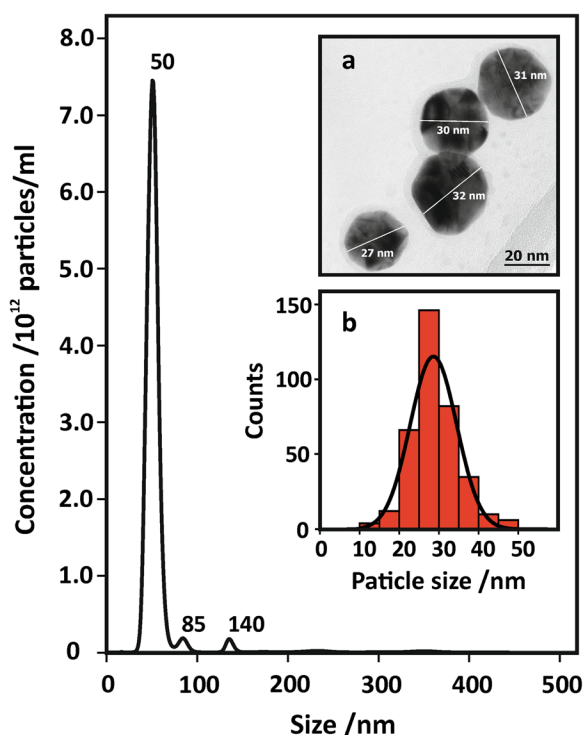


Fig. 3 Size distribution profile of AuNPs measured with the NTA method. Inset a: TEM image of the prepared AuNPs. Inset b: size distribution of AuNPs

Insets a and b (Fig. 3) clearly illustrate a rhombicuboctahedral morphology typically observed for Au nanoparticles (Louis and Pluchery 2012) and reveal a smaller diameter (~ 30 nm), when compared with the results obtained from the NTA measurements. Indeed, the NTA-determined size represents the hydrodynamic diameter of the particle, always of the higher value. It should be noticed, however, that both the complementary methods revealed the narrow size distribution of the synthesized Au nanoparticles, as described elsewhere (Bastús et al. 2011), with the characteristic value of the ζ -potential equal to -7 mV (± 0.6 mV).

Interaction between bacterial walls and nanoparticles

In order to quantify the number of gold nanoparticles adsorbed on various bacterial strains, SEM microphotographs of the investigated bacteria after incubation in the AuNP suspension were analyzed. Figure 4 shows representative examples of the bacterial cells decorated with the gold nanoparticles.

It can be easily noticed that the investigated bacteria exhibit dramatically different affinity to gold nanoparticles attachment on their surfaces. Taking into account that the NP suspension and the conditions of all the incubation experiments (temperature, time, and pH) were kept the same, it is clear that the various bacterial strains captured the substantially different amount of gold nanoparticles. Notably, the G⁺ bacteria (*S. carnosus* and *B. subtilis*) adhered much more AuNPs when compared with the G⁻ ones (*S. maltophilia* and *N. subflava*). These observations were corroborated by more detailed TEM investigations of the bacteria coated with AuNPs. In Fig. 5, the cross sections (~ 60 -nm-thick lamellas) of single resin-embedded cells of the studied bacteria decorated with AuNPs are presented. They illustrate the somehow different shape of the bacterial cells than observed in SEM images, but it should be taken into account that the cells were cross-sectioned at random orientations. The SEM and TEM microscopic observations revealed that the nanoparticles do not penetrate into the bacterial cells. This can be explained by relatively big nanoparticles size (30 nm) compared with the pores in the cell wall (4–16 nm) (Turner et al. 2013), and short time of incubation (15 min).

In accordance with the model of the bacterial walls presented in Fig. 1, for the G⁻ species (*S. maltophilia* and *N. subflava*), significantly thinner cell wall structure

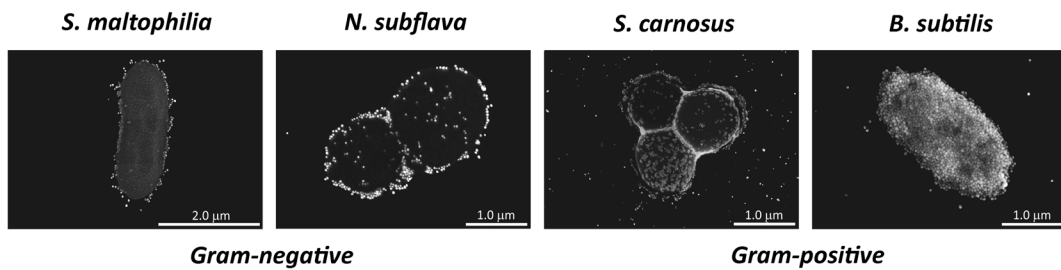


Fig. 4 SEM microphotographs of the investigated bacterial strains coated with gold nanoparticles

of about 20 nm is observed, whereas for the G+ (*S. carnosus* and *B. subtilis*) the walls are in the range of 30–50 nm. Such a feature is characteristic for the G+ strains due to the thick peptidoglycan layer situated above the cell membrane. In general, the TEM images confirmed the SEM observations revealing the various numbers of NPs adhered on the bacterial cells. Whereas for the *S. maltophilia*, *N. subflava*, and *S. carnosus*, the adhered nanoparticles are well separated by a distance from several to tens of their dimensions; in the case of *B. subtilis*, a pronounced load of nanoparticles leads to the surface agglomeration of the excessive gold nanoparticles.

The microscopic observations of the adhered AuNPs to the bacterial cell walls were quantified as a number of nanoparticles covering 1 μm² of the projected bacterial surface area. The results are summarized in Fig. 6 (grey bars).

The highest number of the NPs attached to the cell wall surface was observed for *B. subtilis* (10³ NPs) and the lowest for *S. maltophilia* (60 NPs). For *N. subflava* and *S. carnosus*, the intermediate values of ~ 1.5 × 10² NPs and ~ 4.0 × 10² were observed, respectively. In the

same figure, the experimental values of the ζ-potential for the investigated bacterial strains are also shown (red plot). The trend in the amount of AuNPs adhered to the bacterial cell surface *B. subtilis* >> *S. carnosus* > *N. subflava* > *S. maltophilia* correlates well with the values of ζ-potential: the higher the negative charge is, the higher the adhesion extends. It may be thus concluded that the ζ-potential plays the role of a simple, concise descriptor of the adsorption process in the bacteria–nanoparticle systems.

The bacteria and nanoparticles being suspended in the aqueous solution can be treated as interacting colloidal particles, and their behavior can be accounted for in terms of the DLVO model as a reasonable approximation. The potential interaction energy profiles between bacteria and nanoparticles were calculated based on the Derjaguin–Landau–Verwey–Overbeek (DLVO) theory (Israelachvili 2011; Hwang et al. 2012; Ohshima 2014). The total interaction energy ($V^{tot} = V^{EL} + V^{LW}$) results from electrostatic repulsive interactions (V^{EL}) and attractive London-van der Waals forces (V^{LW}). Based on previous studies (Hwang et al. 2012), the model for two interacting spherical particles with the

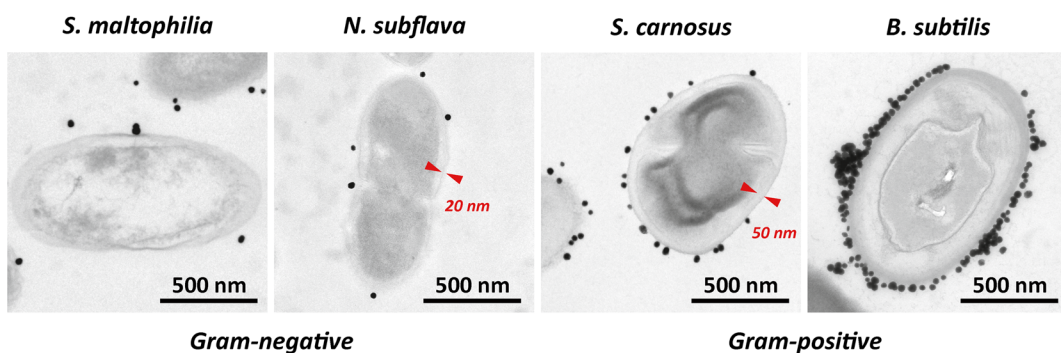


Fig. 5 TEM microphotographs of single resin-embedded bacterial cells decorated with gold nanoparticles. Red markers indicate the thickness of cell walls

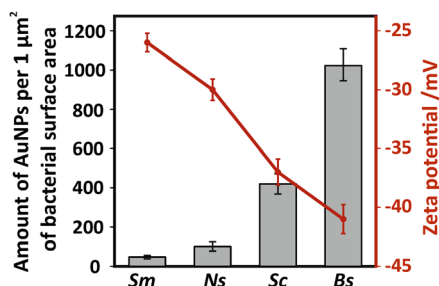


Fig. 6 The relationship between bacterial zeta potential (red plot) and the amount of adhered AuNPs (grey bars). Sm, *S. maltophilia*; Ns, *N. subflava*; Sc, *S. carnosus*; Bs, *B. subtilis*

radii a_1 (bacteria) and a_2 (nanoparticle) separated by the distance d can be approximated as

$$V^{LW} = -\frac{A(a_1 a_2)}{6d(a_1 + a_2)}$$

$$V^{EL} = \frac{\pi \epsilon a_1 a_2 (\zeta_1^2 + \zeta_2^2)}{(a_1 + a_2)} \left[\frac{2\zeta_1 \zeta_2}{\zeta_1^2 + \zeta_2^2} \ln \frac{1 + \exp(-\kappa d)}{1 - \exp(-\kappa d)} + \ln \{1 - \exp(-2\kappa d)\} \right]$$

where A is the Hamaker constant calculated as described elsewhere (Ohshima 2014) (1.72×10^{-20} J); ϵ is expressed as the product of the relative permittivity of the medium ϵ_r , which is 80 for water at 20 °C, and the permittivity of a vacuum ϵ_0 (8.854×10^{-12} C²/Jm); and ζ_1 and ζ_2 are the zeta potentials of bacteria and nanoparticles, respectively, whereas κ is the inverse Debye–Hückel length (729 nm for pH = 6.5) calculated according to (Israelachvili 2011). The Hamaker constant for this system, where the bacterial cells are interacting with nanoparticles in water, was calculated following the formula (Ohshima 2014):

$$A_{132} = \left(\sqrt{A_1} - \sqrt{A_3} \right) \left(\sqrt{A_2} - \sqrt{A_3} \right)$$

where A_{132} is the Hamaker constant for the interaction between bacteria ($A_1 = 5.2 \times 10^{-20}$ J) (Farahat et al. 2009) and gold nanoparticles ($A_2 = 45.3 \times 10^{-20}$ J) (Israelachvili 2011) separated by a water medium ($A_3 = 3.7 \times 10^{-20}$ J) (Israelachvili 2011). The value of Hamaker constant for bacterial cells was adapted from a similar research focused on the interaction of various bacterial strains with surfaces. Additionally, we checked several other Hamaker values (Liu et al. 2007; Farahat et al. 2009; Harimawan et al. 2013; Yoshihara et al. 2015) within the range of 10^{-23} – 10^{-20} J and found out that both the trends in critical radius and the primary energy minima are not sensitive to A_1 , at least in the realistic range for bacteria. Thus, in our opinion, the DLVO model is helpful in interpreting our experimental findings.

For calculations, the spherical shapes of bacteria with an equivalent radius of 400, 440, 460, and 520 nm were assumed for *N. subflava*, *S. carnosus*, *S. maltophilia*, and *B. subtilis*, respectively. The latter value was assessed as an average radius of a model spherical cell corresponding to the actual cylindrical/spherical bacterial shapes with the same volume. The resultant DLVO energy profiles as a function of a separation distance for the tested bacterial strains interacting with AuNPs are presented in Fig. 7.

The calculated DLVO energy profiles exhibit rather small activation barriers of 1.45–1.55 kT at 500–800 nm (inset a) and the sufficiently deep primary energy minima of 120–170 kT (inset b) for the adsorption process to be effective. It is also worth to underline that the depth of the observed primary minima for each of the bacterial strain is in line with the amount of the adhered nanoparticles observed in the microscopic measurements (see Figs. 4, 5, and 6).

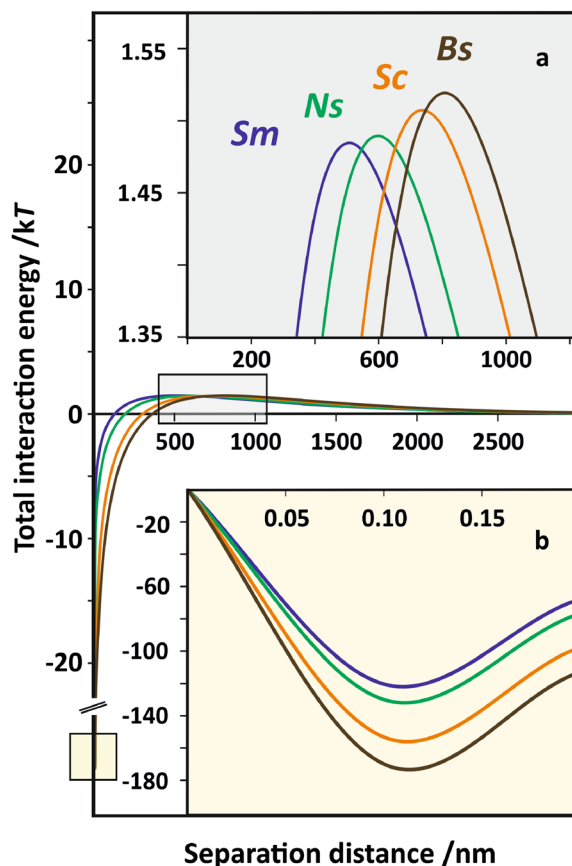


Fig. 7 Potential energy profiles for bacteria–AuNP interactions calculated based on the DLVO theory. Sm, *S. maltophilia*; Ns, *N. subflava*; Sc, *S. carnosus*; Bs, *B. subtilis*

In Fig. 8, a reasonably good linear correlation of the number of gold nanoparticles as a function of a critical radius (r_{crit}) to the third power is shown. The critical radius is defined by a formula: $r_{\text{crit}}^3 = R^3 - a_1^3$, where R is designated by a location of energy maxima in DLVO profile for each bacteria of radius a_1 (see upper inset in Fig. 7). The value of r_{crit}^3 gauges the critical volume around the bacterial cell, where the attraction forces dominate. It may be interpreted in terms that the observed differences in the attachment efficiency for various strains result from the availability of the nanoparticles in the critical volume of the suspension surrounding the bacterial cells.

It is worth noting that the obtained results have more general relevance and practical applications. Indeed, owing to a non-specific bacteria–nanoparticle interaction governed by the ζ -potential essentially, the established relationships can be readily extended for other systems. Due to the remarkable adhesion properties of *B. subtilis*, we can explain why these specific microorganisms are predestined as a template to agglomerate Au nanoparticles into organized long ribbons, as shown elsewhere (He et al. 2006). Understanding the bacteria–nanoparticles interactions are especially important for designing of biocompatible and stable biosensors. The subject is intensively investigated nowadays, and there are several examples illustrating the applications of AuNPs in colorimetric biosensors array (see, e.g., Verma et al. 2016). The presented results provide the basis for future advancement of a fast, simple, label-free method of bacteria detection in clinical diagnostics and environmental monitoring (Li et al. 2015). Besides the biosensors, the effective adhesion of AuNPs to bacterial walls can also help in a thorough biochemical

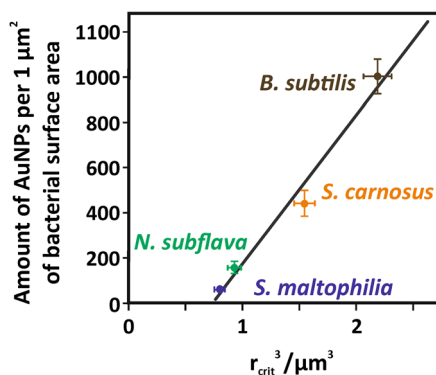


Fig. 8 The number of nanoparticles adhered to various bacterial strains as a function of the critical radius of the surrounding sphere where the attractive forces between bacteria and gold nanoparticles dominate (see text for more detail)

characterization of bacteria via SERS method, as discussed elsewhere (Lin et al. 2014; Zhou et al. 2015).

Conclusions

In this paper, the adhesion efficiency of gold nanoparticles (30 nm) for Gram-positive (*B. subtilis*, *S. carnosus*) and Gram-negative (*N. subflava*, *S. maltophilia*) bacterial strains was examined. It was found out that among the investigated strains the attachment efficiency decreases in the order *B. subtilis* \gg *S. carnosus* $>$ *N. subflava* $>$ *S. maltophilia*. A direct correlation between the number of the attached nanoparticles and the ζ -potential of the bacterial strains was established, and the results were accounted for within the DLVO theory. The small activation barriers for the adhesion process (1.45–1.55 kT), together with rather deep primary energy minima (120–170 kT) are favorable for the effective adsorption process. The linear correlation between the nanoparticles adhered to the bacterial cells surface and the size of the critical volume around the bacterial cells where the attraction forces dominate implies the dramatic differences in the attachment efficiency result from the availability of the nanoparticles in the critical volume of the surrounding suspensions.

Acknowledgments W. Pajerski acknowledges the fellowship with the project no. POWR.03.02.00-00-I013/16.

The SEM imaging was performed in the Laboratory of Field Emission Scanning Electron Microscopy and Microanalysis at the Institute of Geological Sciences, Jagiellonian University, Poland.

Funding information The study was financed by the Polish National Science Centre project awarded by decision number DEC-2016/21/B/ST8/00398.

Compliance with ethical standards

Conflict of interest The authors declare that they have no conflict of interest.

Open Access This article is distributed under the terms of the Creative Commons Attribution 4.0 International License (<http://creativecommons.org/licenses/by/4.0/>), which permits unrestricted use, distribution, and reproduction in any medium, provided you give appropriate credit to the original author(s) and the source, provide a link to the Creative Commons license, and indicate if changes were made.

References

- Ahimou F, Boonaert CJP, Adriaensen Y, Jacques P, Thonart P, Paquot M, Rouxhet PG (2007) XPS analysis of chemical functions at the surface of *Bacillus subtilis*. *J Colloid Interface Sci* 309:49–55. <https://doi.org/10.1016/j.jcis.2007.01.055>
- Aruoja V, Pokhrel S, Sihtmäe M, Mortimer M, Mädler L, Kahru A (2015) Toxicity of 12 metal-based nanoparticles to algae, bacteria and protozoa. *Environ Sci Nano* 2:630–644. <https://doi.org/10.1039/c5en00057b>
- Bar-Ilan O, Albrecht RM, Fako VE, Furgeson DY (2009) Toxicity assessments of multisized gold and silver nanoparticles in zebrafish embryos. *Small* 5:1897–1910. <https://doi.org/10.1002/smll.200801716>
- Barnes RJ, Molina R, Xu J, Dobson PJ, Thompson IP (2013) Comparison of TiO₂ and ZnO nanoparticles for photocatalytic degradation of methylene blue and the correlated inactivation of gram-positive and gram-negative bacteria. *J Nanopart Res* 15:1432. <https://doi.org/10.1007/s11051-013-1432-9>
- Bastús NG, Comenge J, Puentes V (2011) Kinetically controlled seeded growth synthesis of citrate-stabilized gold nanoparticles of up to 200 nm. *Langmuir* 27:11098–11105. <https://doi.org/10.1021/la201938u>
- Bozich JS, Lohse SE, Torelli MD, Murphy CJ, Hamers RJ, Klaper RD (2014) Surface chemistry, charge and ligand type impact the toxicity of gold nanoparticles to *Daphnia magna*. *Environ Sci Nano* 1:260–270. <https://doi.org/10.1039/c4en00006d>
- Bozorgmehr A, Yazdanparast R, Mollasalehi H (2016) Non-crosslinking gold nanoprobe-LAMP for simple, colorimetric, and specific detection of *Salmonella typhi*. *J Nanopart Res* 18. <https://doi.org/10.1007/s11051-016-3657-x>
- Braslavsky I, Dolev MB, Bernheim R et al (2016) Putting life on ice: bacteria that bind to frozen water. *J R Soc Interface* 13:1–11. <https://doi.org/10.1098/rsif.2016.0210>
- Bresee J, Maier KE, Boncella AE, Melander C, Feldheim DL (2011) Growth inhibition of *Staphylococcus aureus* by mixed monolayer gold nanoparticles. *Small* 7:2027–2031. <https://doi.org/10.1002/smll.201100420>
- Calatayud MP, Sanz B, Raffa V, Riggio C, Ibarra MR, Goya GF (2014) The effect of surface charge of functionalized Fe₃O₄ nanoparticles on protein adsorption and cell uptake. *Biomaterials* 35:6389–6399. <https://doi.org/10.1016/j.biomaterials.2014.04.009>
- Carrière M (2012) What about toxicity and ecotoxicity of gold nanoparticles? In: Louis C, Pluchery O (eds) *Gold nanoparticles for physics*. Chemistry And Biology. Imperial College Press, London, pp 333–353
- Chissoe WF, Vezey EL, Skvarla JJ (1994) Hexamethyldisilazane as a drying agent for pollen scanning electron microscopy. *Biotech Histochem* 69:192–198. <https://doi.org/10.3109/10520299409106286>
- Chwalibog A, Sawosz E, Hotowy A et al (2010) Visualization of interaction between inorganic nanoparticles and bacteria or fungi. *Int J Nanomedicine* 5:1085–1094. <https://doi.org/10.2147/IJN.S13532>
- Clifton LA, Skoda MWA, Daulton EL, Hughes AV, le Brun AP, Lakey JH, Holt SA (2013) Asymmetric phospholipid: lipopolysaccharide bilayers; a gram-negative bacterial outer membrane mimic. *J R Soc Interface* 10:20130810. <https://doi.org/10.1098/rsif.2013.0810>
- Deplanche K, Merroun ML, Casadesus M, Tran DT, Mikheenko IP, Bennett JA, Zhu J, Jones IP, Attard GA, Wood J, Selenska-Pobell S, Macaskie LE (2012) Microbial synthesis of core/shell gold/palladium nanoparticles for applications in green chemistry. *J R Soc Interface* 9:1705–1712. <https://doi.org/10.1098/rsif.2012.0003>
- Donlan RM, Costerton JW (2002) Biofilms: survival mechanisms of clinically relevant microorganisms. *Clin Microbiol Rev* 15:167–193. <https://doi.org/10.1128/CMR.15.2.167>
- Donmez M, Yilmaz MD, Kilbas B (2017) Fluorescent detection of dipicolinic acid as a biomarker of bacterial spores using lanthanide-chelated gold nanoparticles. *J Hazard Mater* 324:593–598. <https://doi.org/10.1016/j.jhazmat.2016.11.030>
- Durán N, Marcató PD, Durán M, Yadav A, Gade A, Rai M (2011) Mechanistic aspects in the biogenic synthesis of extracellular metal nanoparticles by peptides, bacteria, fungi, and plants. *Appl Microbiol Biotechnol* 90:1609–1624. <https://doi.org/10.1007/s00253-011-3249-8>
- Dykman LA, Khlebtsov NG (2011) Gold nanoparticles in biology and medicine: recent advances and prospects. *Acta Nat* 3:34–55. <https://doi.org/10.1039/c0cs00018c>
- Eliceiri K, Schneider CA, Rasband WS, Eliceiri KW (2012) NIH image to ImageJ: 25 years of image analysis HISTORICAL commentary NIH image to ImageJ : 25 years of image analysis. *Nat Methods* 9:671–675. <https://doi.org/10.1038/nmeth.2089>
- Faisal M, Saquib Q, Alatar AA, Al-Khedhairi AA (2018) Cytotoxicity of nanoparticles. *Phytotoxicity of Nanoparticles*:1–407. <https://doi.org/10.1007/978-3-319-76708-6>
- Farahat M, Hirajima T, Sasaki K, Doi K (2009) Adhesion of *Escherichia coli* onto quartz, hematite and corundum: extended DLVO theory and flotation behavior. *Colloids Surf B* 74:140–149. <https://doi.org/10.1016/j.colsurfb.2009.07.009>
- Fischer ER, Hansen BT, Nair V et al (2012) Scanning electron microscopy. *Curr Protoc Microbiol*. <https://doi.org/10.1002/9780471729259.mc02b02s25>
- Gatea F, Teodor ED, Seciu AM et al (2015) Antitumour, antimicrobial and catalytic activity of gold nanoparticles synthesized by different pH propolis extracts. *J Nanoparticle Res* 17. <https://doi.org/10.1007/s11051-015-3127-x>
- Harimawan A, Zhong S, Lim CT, Ting YP (2013) Adhesion of *B. subtilis* spores and vegetative cells onto stainless steel - DLVO theories and AFM spectroscopy. *J Colloid Interface Sci* 405:233–241. <https://doi.org/10.1016/j.jcis.2013.05.031>
- He Y, Yuan J, Su F, Xing X, Shi G (2006) *Bacillus subtilis* assisted assembly of gold nanoparticles into long conductive nodous ribbons. *J Phys Chem B* 110:17813–17818. <https://doi.org/10.1021/jp063729o>
- Hua XW, Bao YW, Wang HY, Chen Z, Wu FG (2017) Bacteria-derived fluorescent carbon dots for microbial live/dead differentiation. *Nanoscale* 9:2150–2161. <https://doi.org/10.1039/c6nr06558a>
- Hwang G, Ahn IS, Mhin BJ, Kim JY (2012) Adhesion of nano-sized particles to the surface of bacteria: mechanistic study with the extended DLVO theory. *Colloids Surf B* 97:138–144. <https://doi.org/10.1016/j.colsurfb.2012.04.031>
- Israelachvili J (2011) *Intermolecular and surface forces*. Elsevier, New York

- Judy JD, Bertsch PM (2014) Bioavailability, toxicity, and fate of manufactured nanomaterials in terrestrial ecosystems. *Adv Agron* 123:1–64. <https://doi.org/10.1016/B978-0-12-420225-2.00001-7>
- Jung JH, Lee SY, Seo TS (2018) In vivo synthesis of nanocomposites using the recombinant *Escherichia coli*. *Small* 14:1–7. <https://doi.org/10.1186/s1186-s1186-017-0509-8>
- Khelissa SO, Jama C, Abdallah M, Boukherroub R, Faille C, Chihib NE (2017) Correction to: Effect of incubation duration, growth temperature, and abiotic surface type on cell surface properties, adhesion and pathogenicity of biofilm-detached *Staphylococcus aureus* cells. *AMB Express* 7:216. <https://doi.org/10.1002/elps.200900559>
- Kłodzińska E, Szumski M, Dziubakiewicz E, Hryniewicz K, Skwarek E, Janusz W, Buszewski B (2010) Effect of zeta potential value on bacterial behavior during electrophoretic separation. *Electrophoresis* 31:1590–1596. <https://doi.org/10.1002/elps.200900559>
- Li X, Robinson SM, Gupta A, Saha K, Jiang Z, Moyano DF, Sahar A, Riley MA, Rotello VM (2014) Functional gold nanoparticles as potent antimicrobial agents against multi-drug-resistant bacteria. *ACS Nano* 8:10682–10686. <https://doi.org/10.1021/nn5042625>
- Li D, Dong Y, Li B, Wu Y, Wang K, Zhang S (2015) Colorimetric sensor array with unmodified noble metal nanoparticles for naked-eye detection of proteins and bacteria. *Analyst* 140:7672–7677. <https://doi.org/10.1039/c5an01267h>
- Lin HY, Huang CH, Hsieh WH, Liu LH, Lin YC, Chu CC, Wang ST, Kuo IT, Chau LK, Yang CY (2014) On-line SERS detection of single bacterium using novel SERS nanoprobe and a microfluidic dielectrophoresis device. *Small* 10:4700–4710. <https://doi.org/10.1002/sml.201401526>
- Liu XM, Sheng GP, Yu HQ (2007) DLVO approach to the flocculability of a photosynthetic H₂-producing bacterium, *Rhodospseudomonas acidophila*. *Environ Sci Technol* 41:4620–4625. <https://doi.org/10.1021/es070107n>
- Loeb S, Li C, Kim JH (2018) Solar photothermal disinfection using broadband-light absorbing gold nanoparticles and carbon black. *Environ Sci Technol* 52:205–213. <https://doi.org/10.1021/acs.est.7b04442>
- López-Lorente ÁI, Cárdenas S, González-Sánchez ZI (2019) Effect of synthesis, purification and growth determination methods on the antibacterial and antifungal activity of gold nanoparticles. *Mater Sci Eng C* 103:109805. <https://doi.org/10.1016/j.msec.2019.109805>
- Louis C, Pluchery O (2012) Gold nanoparticles for physics, chemistry and biology. Imperial College Press, London
- Lovering AL, Lin LYC, Sewell EW, Spreter T, Brown ED, Strynadka NCJ (2010) Structure of the bacterial teichoic acid polymerase TagF provides insights into membrane association and catalysis. *Nat Struct Mol Biol* 17:582–589. <https://doi.org/10.1038/nsmb.1819>
- Malanovic N, Lohner K (2016) Gram-positive bacterial cell envelopes: the impact on the activity of antimicrobial peptides. *Biochim Biophys Acta Biomembr* 1858:936–946. <https://doi.org/10.1016/j.bbmem.2015.11.004>
- McCracken C, Dutta PK, Waldman WJ (2016) Critical assessment of toxicological effects of ingested nanoparticles. *Environ Sci Nano* 3:256–282. <https://doi.org/10.1039/c5en00242g>
- Miller SE, Bell CS, Mejias R et al (2016) Colistin-functionalized nanoparticles for the rapid capture of acinetobacter baumannii. *J Biomed Nanotechnol* 12:1806–1819. <https://doi.org/10.1166/jbn.2016.2273>
- Mmola M, Roes-Hill M, Durrell K, Bolton J, Sibuyi N, Meyer M, Beukes D, Antunes E (2016) Enhanced antimicrobial and anticancer activity of silver and gold nanoparticles synthesised using *Sargassum incisifolium* aqueous extracts. *Molecules* 21:1633. <https://doi.org/10.3390/molecules21121633>
- Moriarty TF, Poulsson AHC, Rochford ETJ, Richards RG (2011) Bacterial adhesion and biomaterial surfaces. *Compr Biomater* 4:75–100. <https://doi.org/10.1016/B978-0-08-055294-1.00007-6>
- Nangia Y, Wangoo N, Goyal N, Shekhawat G, Suri CR (2009) A novel bacterial isolate *Stenotrophomonas maltophilia* as living factory for synthesis of gold nanoparticles. *Microb Cell Factories* 8:1–7. <https://doi.org/10.1186/1475-2859-8-39>
- Nath D, Banerjee P (2013) Green nanotechnology - a new hope for medical biology. *Environ Toxicol Pharmacol* 36:997–1014. <https://doi.org/10.1016/j.etap.2013.09.002>
- Nguyen VT, Turner MS, Dykes GA (2011) Influence of cell surface hydrophobicity on attachment of *Campylobacter* to abiotic surfaces. *Food Microbiol* 28:942–950. <https://doi.org/10.1016/j.fm.2011.01.004>
- Ohshima H (2014) Interaction of colloidal particles. In: Ohshima H, Makino K (eds) *Colloid and interface science in pharmaceutical research and development*. Elsevier, New York, pp 1–28
- Pradeepa, Vidya SM, Mutalik S et al (2016) Preparation of gold nanoparticles by novel bacterial exopolysaccharide for antibiotic delivery. *Life Sci* 153:171–179. <https://doi.org/10.1016/j.lfs.2016.04.022>
- Rai M, Yadav A, Gade A (2009) Silver nanoparticles as a new generation of antimicrobials. *Biotechnol Adv* 27:76–83. <https://doi.org/10.1016/j.biotechadv.2008.09.002>
- Ramasamy M, Lee SS, Yi DK, Kim K (2014) Magnetic, optical gold nanorods for recyclable photothermal ablation of bacteria. *J Mater Chem B* 2:981–988. <https://doi.org/10.1039/c3tb21310b>
- Ramasamy M, Lee JH, Lee J (2016) Potent antimicrobial and antibiofilm activities of bacteriogenically synthesized gold-silver nanoparticles against pathogenic bacteria and their physicochemical characterizations. *J Biomater Appl* 31:366–378. <https://doi.org/10.1177/0885328216646910>
- Romero-Brey I, Bartenschlager R (2015) Viral infection at high magnification: 3D electron microscopy methods to analyze the architecture of infected cells. *Viruses* 7:6316–6345. <https://doi.org/10.3390/v7122940>
- Saha K, Agasti SS, Kim C, Li X, Rotello VM (2012) Gold nanoparticles in chemical and biological sensing. *Chem Rev* 112:2739–2779. <https://doi.org/10.1021/cr2001178>
- Sajjanar B, Kakodia B, Bisht D, Saxena S, Singh AK, Joshi V, Tiwari AK, Kumar S (2015) Peptide-activated gold nanoparticles for selective visual sensing of virus. *J Nanopart Res* 17:1–9. <https://doi.org/10.1007/s11051-015-3043-0>
- Silhavy T, Kahne D, Walker S (2010) The bacterial cell envelope. *Cold Spring Harb Perspect Biol* 2:1–16. <https://doi.org/10.1101/cshperspect.a000414>
- Spriano S, Sarath Chandra V, Cochis A, Uberti F, Rimondini L, Bertone E, Vitale A, Scolaro C, Ferrari M, Cirisano F, Gautier di Confienzo G, Ferraris S (2017) How do wettability, zeta potential and hydroxylation degree affect the biological

- response of biomaterials? *Mater Sci Eng C* 74:542–555. <https://doi.org/10.1016/j.msec.2016.12.107>
- Srivastava SK, Yamada R, Ogino C, Kondo A (2013) Biogenic synthesis and characterization of gold nanoparticles by *Escherichia coli* K12 and its heterogeneous catalysis in degradation of 4-nitrophenol. *Nanoscale Res Lett* 8:70. <https://doi.org/10.1186/1556-276X-8-70>
- The European Commission (2011) Commission recommendation of 18 October 2011 on the definition of nanomaterial. *Off J Eur Union*:38–40
- Turner RD, Hurd AF, Cadby A, Hobbs JK, Foster SJ (2013) Cell wall elongation mode in Gram-negative bacteria is determined by peptidoglycan architecture. *Nat Commun* 4: 1496–1498. <https://doi.org/10.1038/ncomms2503>
- Verma MS, Wei SC, Rogowski JL, Tsuji JM, Chen PZ, Lin CW, Jones L, Gu FX (2016) Interactions between bacterial surface and nanoparticles govern the performance of “chemical nose” biosensors. *Biosens Bioelectron* 83:115–125. <https://doi.org/10.1016/j.bios.2016.04.024>
- von Moos N, Bowen P, Slaveykova VI (2014) Bioavailability of inorganic nanoparticles to planktonic bacteria and aquatic microalgae in freshwater. *Environ Sci Nano* 1:214. <https://doi.org/10.1039/c3en00054k>
- Wadhvani SA, Shedbalkar UU, Singh R, Chopade BA (2016) Biogenic selenium nanoparticles: current status and future prospects. *Appl Microbiol Biotechnol* 100:2555–2566. <https://doi.org/10.1007/s00253-016-7300-7>
- Wilson WW, Wade MM, Holman SC, Champlin FR (2001) Status of methods for assessing bacterial cell surface charge properties based on zeta potential measurements. *J Microbiol Methods* 43:153–164. [https://doi.org/10.1016/S0167-7012\(00\)00224-4](https://doi.org/10.1016/S0167-7012(00)00224-4)
- Xing X, Ma W, Zhao X, Wang J, Yao L, Jiang X, Wu Z (2018) Interaction between surface charge-modified gold nanoparticles and phospholipid membranes. *Langmuir* 34:12583–12589. <https://doi.org/10.1021/acs.langmuir.8b01700>
- Yang C, Bromma K, Di Ciano-Oliveira C et al (2018) Gold nanoparticle mediated combined cancer therapy. *Cancer Nanotechnol*:9. <https://doi.org/10.1186/s12645-018-0039-3>
- Yoshihara A, Nobuhira N, Narahara H, Toyoda S, Tokumoto H, Konishi Y, Nomura T (2015) Estimation of the adhesive force distribution for the flagellar adhesion of *Escherichia coli* on a glass surface. *Colloids Surf B Biointerfaces* 131:67–72. <https://doi.org/10.1016/j.colsurfb.2015.04.038>
- Young KD (2006) The selective value of bacterial shape. *Microbiol Mol Biol Rev* 70:660–703. <https://doi.org/10.1128/MMBR.00001-06>
- Zhang Y, Shareena Dasari TP, Deng H, Yu H (2015) Antimicrobial activity of gold nanoparticles and ionic gold. *J Environ Sci Health C Environ Carcinog Ecotoxicol Rev* 33:286–327. <https://doi.org/10.1080/10590501.2015.1055161>
- Zhou W, Gao X, Liu D, Chen X (2015) Gold nanoparticles for in vitro diagnostics. *Chem Rev* 115:10575–10636. <https://doi.org/10.1021/acs.chemrev.5b00100>
- Zhu Y, Sun Q, Liu Y, Ma T, Su L, Liu S, Shi X, Han D, Liang F (2018) Decorating gold nanostars with multiwalled carbon nanotubes for photothermal therapy. *R Soc Open Sci*:5. <https://doi.org/10.1098/rsos.180159>

Publisher's note Springer Nature remains neutral with regard to jurisdictional claims in published maps and institutional affiliations.