



## Article

# ***APOE* Promoter Polymorphism-219T/G is an Effect Modifier of the Influence of *APOE* $\epsilon$ 4 on Alzheimer's Disease Risk in a Multiracial Sample**

Kyu Yeong Choi <sup>1</sup>, Jang Jae Lee <sup>1</sup>, Tamil Iniyan Gunasekaran <sup>1,2</sup> , Sarang Kang <sup>1,3</sup>, Wooje Lee <sup>1</sup>, Jangho Jeong <sup>4</sup>, Ho Jae Lim <sup>1,3</sup> , Xiaoling Zhang <sup>5,6</sup>, Congcong Zhu <sup>5</sup> , So-Yoon Won <sup>7</sup>, Yu Yong Choi <sup>1</sup>, Eun Hyun Seo <sup>1,8</sup>, Seok Cheol Lee <sup>1</sup>, Jungsoo Gim <sup>1,2</sup>, Ji Yeon Chung <sup>1,9</sup>, Ari Chong <sup>1,10</sup>, Min Soo Byun <sup>11</sup>, Sujin Seo <sup>12</sup>, Pan-Woo Ko <sup>13</sup>, Ji-Won Han <sup>14</sup>, Catriona McLean <sup>15</sup>, John Farrell <sup>5</sup>, Kathryn L. Lunetta <sup>6</sup>, Akinori Miyashita <sup>16</sup> , Norikazu Hara <sup>16</sup>, Sungho Won <sup>12</sup> , Seong-Min Choi <sup>17</sup>, Jung-Min Ha <sup>1,10</sup>, Jee Hyang Jeong <sup>18</sup>, Ryozo Kuwano <sup>16</sup>, Min Kyung Song <sup>19</sup>, Seong Soo A. An <sup>20</sup>, Young Min Lee <sup>21</sup>, Kyung Won Park <sup>22</sup> , Ho-Won Lee <sup>13</sup> , Seong Hye Choi <sup>23</sup>, Sangmyung Rhee <sup>4</sup>, Woo Keun Song <sup>24</sup>, Jung Sup Lee <sup>1,2</sup>, Richard Mayeux <sup>25</sup>, Jonathan L. Haines <sup>26</sup>, Margaret A. Pericak-Vance <sup>27</sup>, IL Han Choo <sup>28</sup>, Kwangsik Nho <sup>29</sup>, Ki-Woong Kim <sup>14</sup>, Dong Young Lee <sup>11</sup>, SangYun Kim <sup>30</sup>, Byeong C. Kim <sup>17</sup> , Hoowon Kim <sup>1,9</sup> , Gyungah R. Jun <sup>5,6</sup> , Gerard D. Schellenberg <sup>31</sup>, Takeshi Ikeuchi <sup>16</sup> , Lindsay A. Farrer <sup>5,6,32</sup>, Kun Ho Lee <sup>1,2,3,33,\*</sup> and Alzheimer's Disease Neuroimaging Initiative

<sup>1</sup> National Research Center for Dementia, Chosun University, Gwangju 61452, Korea

<sup>2</sup> Department of Biomedical Science, Chosun University, Gwangju 61452, Korea

<sup>3</sup> Department of Life Science, Chosun University, Gwangju 61452, Korea

<sup>4</sup> Department of Life Science, Chung-Ang University, Seoul 06974, Korea

<sup>5</sup> Department of Medicine (Biomedical Genetics), Boston University School of Medicine, Boston, MA 02118, USA

<sup>6</sup> Department of Biostatistics, Boston University School of Public Health, Boston, MA 02118, USA

<sup>7</sup> Department of Biochemistry and Signaling Disorder Research Center, College of Medicine, Chungbuk National University, Cheongju 28644, Korea

<sup>8</sup> Department of Premedical Science, Chosun University College of Medicine, Gwangju 61452, Korea

<sup>9</sup> Department of Neurology, Chosun University Hospital, Gwangju 61452, Korea

<sup>10</sup> Department of Nuclear Medicine, Chosun University Hospital, Gwangju 61452, Korea

<sup>11</sup> Department of Neuropsychiatry, Seoul National University Hospital, Seoul 03080, Korea

<sup>12</sup> Department of Public Health Science, Graduate School of Public Health, Seoul National University, Seoul 08826, Korea

<sup>13</sup> Department of Neurology, Kyungpook National University School of Medicine, Daegu 41944, Korea

<sup>14</sup> Department of Neuropsychiatry, Seoul National University Bundang Hospital, Seongnam, Gyeonggi-do 13620, Korea

<sup>15</sup> Department of Pathology, The Alfred Hospital, Melbourne, Victoria 3004, Australia

<sup>16</sup> Department of Molecular Genetics, Brain Research Institute, Niigata University, Niigata 951-8585, Japan

<sup>17</sup> Department of Neurology, Chonnam National University Medical School, Gwangju 61469, Korea

<sup>18</sup> Department of Neurology, Ewha Womans University Mokdong Hospital, Ewha Womans University School of Medicine, Seoul 07985, Korea

<sup>19</sup> Chonnam national university Gwangju 2nd geriatric hospital, Gwangju 61748, Korea

<sup>20</sup> Department of Bionanotechnology, Gachon University, Seongnam, Gyeonggi-do 13120, Korea

<sup>21</sup> Department of Psychiatry, Pusan National University School of Medicine, Busan 50612, Korea

<sup>22</sup> Department of Neurology, Donga University College of Medicine, Busan 49315, Korea

<sup>23</sup> Department of Neurology, Inha University School of Medicine, Incheon 22212, Korea

<sup>24</sup> Bio Imaging and Cell Logistics Research Center, School of Life Sciences, Gwangju Institute of Science and Technology, Gwangju 61005, Korea

<sup>25</sup> Department of Neurology and Sergievsky Center, Columbia University, New York, NY 10032, USA

<sup>26</sup> Department of Population & Quantitative Health Sciences, Case Western Reserve University, Cleveland, OH 44106, USA

- <sup>27</sup> Hussman Institute for Human Genomics, University of Miami Miller School of Medicine, Miami, FL 33101, USA
- <sup>28</sup> Department of Neuropsychiatry, Chosun University School of Medicine and Hospital, Gwangju 61453, Korea
- <sup>29</sup> Department of Radiology and Imaging Sciences, Center for Neuroimaging, Indiana University School of Medicine, Indianapolis, IN 46202, USA
- <sup>30</sup> Department of Neurology, Seoul National University Bundang Hospital, Seongnam, Gyeonggi-do 13620, Korea
- <sup>31</sup> Department of Pathology and Laboratory Medicine, University of Pennsylvania, Philadelphia, PA 19104-4238, USA
- <sup>32</sup> Departments of Neurology, Ophthalmology, and Epidemiology, Boston University Schools of Medicine and Public Health, Boston, MA 02118, USA
- <sup>33</sup> Department of Neural Development and Disease, Korea Brain Research Institute, Daegu 41062, Korea
- \* Correspondence: leekho@chosun.ac.kr; Tel.: +82-62-230-6246

Received: 5 July 2019; Accepted: 12 August 2019; Published: 16 August 2019



**Abstract:** Variants in the *APOE* gene region may explain ethnic differences in the association of Alzheimer's disease (AD) with  $\epsilon 4$ . Ethnic differences in allele frequencies for three *APOE* region SNPs (single nucleotide polymorphisms) were identified and tested for association in 19,398 East Asians (EastA), including Koreans and Japanese, 15,836 European ancestry (EuroA) individuals, and 4985 African Americans, and with brain imaging measures of cortical atrophy in sub-samples of Koreans and EuroAs. Among  $\epsilon 4/\epsilon 4$  individuals, AD risk increased substantially in a dose-dependent manner with the number of *APOE* promoter SNP rs405509 T alleles in EastAs (*TT*: OR (odds ratio) = 27.02,  $p = 8.80 \times 10^{-94}$ ; *GT*: OR = 15.87,  $p = 2.62 \times 10^{-9}$ ) and EuroAs (*TT*: OR = 18.13,  $p = 2.69 \times 10^{-108}$ ; *GT*: OR = 12.63,  $p = 3.44 \times 10^{-64}$ ), and rs405509-T homozygotes had a younger onset and more severe cortical atrophy than those with G-allele. Functional experiments using *APOE* promoter fragments demonstrated that *TT* lowered *APOE* expression in human brain and serum. The modifying effect of rs405509 genotype explained much of the ethnic variability in the AD/ $\epsilon 4$  association, and increasing *APOE* expression might lower AD risk among  $\epsilon 4$  homozygotes.

**Keywords:** *APOE*; promoter polymorphism; Alzheimer's disease; ethnic variability; brain atrophy; genetic association

## 1. Introduction

Alzheimer's disease (AD) is a progressive neurodegenerative disorder, characterized clinically by dementia and memory loss. It is the most common cause of dementia in the elderly, accounting 60–80% of cases, and it has become a global health issue [1]. The prevalence of AD has been estimated to be approximately 13% among persons over age 65 and 45% among those over age 85 [2]. The hallmark neuropathological features of AD include senile plaques containing oligomeric amyloid- $\beta$  ( $A\beta_{42}$ ) and neurofibrillary tangles composed of decomposed hyperphosphorylated tau protein (p-tau). AD patients display a substantially reduced hippocampal volume measured by brain imaging and have reduced  $A\beta_{42}$  but increased tau and p-tau levels in cerebrospinal fluid (CSF) [3,4].

The apolipoprotein E (*APOE*)  $\epsilon 4$  allele is the most established genetic risk factor for the common late-onset form of AD [5–7]. The  $\epsilon 4$  is typically present in over 40% of AD patients in European ancestry (EuroA) populations, but in less than 25% of cognitively normal controls [8]. Previous studies have shown that  $\epsilon 4$  is associated with a reduction in the age at onset of AD symptoms by 5–15 years in a dose-dependent manner [6,9,10]. The less common  $\epsilon 2$  allele is protective against AD [10,11]. There is disagreement about the effect of  $\epsilon 4$  on cognitive decline, with some studies suggesting a positive correlation [12–16] and others showing no effect [17–19]. Curiously, there are also reports of slower cognitive decline among  $\epsilon 4$  carriers [20]. In spite of these controversial findings, there is consistent

evidence from studies of cognitively normal individuals showing that  $\epsilon 4$  homozygotes, but not  $\epsilon 4$  heterozygotes, have smaller hippocampal volumes than persons lacking the  $\epsilon 4$  allele [21–23].

The strength of the  $\epsilon 4$  association with AD varies widely across ethnic groups with a smaller effect among African Americans (AA) [24–26] and Hispanics [10,26], but a higher effect among Japanese compared to EuroAs [10]. This disparity is particularly noticeable and important among AA and Hispanic persons with the  $\epsilon 3/\epsilon 4$  genotype who do not have a significantly increased risk compared to ethnically-matched persons lacking  $\epsilon 4$  [26,27]. Notably, the protective effect of  $\epsilon 2$  does not vary by ethnicity, age, or sex [10]. Variability across populations in the risk of AD associated with genotypes containing  $\epsilon 4$  can be explained, in part, by differences in the  $\epsilon 4$  allele frequency, i.e., groups with a higher frequency of  $\epsilon 4$  trend toward a lower risk of AD attributable to  $\epsilon 4$  [28,29]. This pattern most notably occurs in populations of African ancestry who have one of the world's highest frequencies of  $\epsilon 4$  but the lowest prevalence of AD [10,28,30]. The basis for population differences in the AD/ $\epsilon 4$  association is unknown, but several hypotheses have been proposed, including genetic modifiers within or extant from the *APOE* locus and moderating influences of dietary and environmental factors [31]. To address this question, we investigated the ethnic-dependent risk of AD mediated by other *APOE* single nucleotide polymorphisms (SNPs) in the coding and regulatory regions in a multi-ethnic sample. We also examined the influence of *APOE* SNPs on brain structure, including cortical thickness and hippocampal volume.

## 2. Materials and Methods

### 2.1. Study Participants

An East Asian (EastA) cohort, including 1308 AD patients and 1803 cognitively normal older adults, from the Gwangju Alzheimer's & Related Dementias (GARD) Study in Korea and 994 AD patients and 971 controls from Japan was assembled by the National Research Center for Dementia (NRCD) at Chosun University in Gwangju, Korea. A battery of neuropsychological tests that assess memory, attention, language, as well as visuospatial and executive function, was administered to all individuals (see the Supplementary Materials for details). The clinical diagnosis of probable AD was made according to the National Institute Neurological and Communicative Disorders and Stroke–Alzheimer Disease and Research Disorders Association (NINCDS-ADRDA) criteria [32]. Controls had no evidence of neurological disease or impairment in cognitive function or activities of daily living. Individuals who had a focal lesion on the brain MRI (magnetic resonance imaging), a history of head trauma, or psychiatric disorder that could affect mental function were excluded. Subsets of this sample had a brain MRI scan (139 AD cases, 921 controls), amyloid PET (positron emission tomography) imaging scan (418 AD cases, 711 controls), or both (45 AD cases, 121 controls). The study protocol was approved by the institutional review board of Chosun University Hospital, Korea. All volunteers or authorized guardians for cognitively impaired individuals gave written informed consent before participation. Data for an additional population-based sample of 14,322 Koreans (55.2% female) of age 40 years or older (mean =  $55.4 \pm 9.7$  years) were obtained from the Korean Genome and Epidemiology Study (KoGES) [33,34]. Clinical and genetic information for EuroAs (8419 AD cases and 7417 controls) and AAs (1523 AD cases and 3462 controls) was obtained from the Alzheimer's Disease Genetics Consortium (ADGC) (Table S1). PET imaging data were also obtained for 1012 EuroA participants (568 AD cases and 444 controls) of the Alzheimer's Disease Neuroimaging Initiative (ADNI) from the ADNI database (<http://adni.loni.usc.edu>) (Table S2).

### 2.2. Data Generation and Analysis

#### 2.2.1. SNP Genotyping

Genomic DNA for 4150 Korean individuals was extracted from peripheral blood leukocytes that were isolated from whole blood collected in EDTA tubes. The samples were genotyped using

an Affymetrix Axiom KORV1.0 Genome-wide genotyping array (Affymetrix®Axiom KORV1.0, Santa Clara, CA, USA), which was designed and optimized for Korean content by the Center for Genome Science, Korea National Institute of Health, Republic of Korea (4845–301, 3000–3031) [35]. The genotyping was performed at DNALink (Seoul, South Korea). *APOE* genotypes were derived from allelic combinations of rs7412 and rs429358, which are included in the genotyping array. The genotype data for 2022 Japanese were kindly provided by Dr. Takeshi Ikeuchi (Niigata University, Niigata, Japan). Genotype data for 1250 ADNI participants were obtained from the ADNI database. Samples from KoGES individuals were genotyped with the Affymetrix 5.0 (Affymetrix) ( $n = 8840$ ), Affymetrix 6.0 (Affymetrix) ( $n = 1816$ ), or Illumina Omni1-quad (Illumina, San Diego, CA, USA) ( $n = 3666$ ) BeadChips.

### 2.2.2. Quality Control of Genome-Wide Data

Data were excluded for Korean NRCD and Japanese samples with individual call-rate <95%, gender inconsistency between reported sex and analysis of X-chromosome SNPs, and extremely low or high genome-wide heterozygosity ( $\pm 3$  SD from the mean). Samples with SNPs with a call-rate <95%, Hardy-Weinberg equilibrium (HWE) test  $p$ -value < $10^{-6}$ , or minor allele frequency (MAF) <1% were excluded. For the Korean population-based individuals, SNPs were excluded for which the call rate <95%, HWE test  $p$ -value < $10^{-5}$ , and MAF <1%. Samples with genotype call-rate <95% and with gender inconsistencies were also removed. Quality control procedures for the EuroA and AA datasets are described elsewhere [36]. SNP genotypes for the EuroAs were imputed separately for each data set using pre-phased reference haplotypes from the Haplotype Reference Consortium (HRC) panel version 1.1 [37]. SNP genotypes for the EastAs and AA cohorts were imputed using the 1000 Genome (Phase 3) reference panel. After imputation, the low-quality imputed SNPs (info score <0.5) were removed [37–39]. The sequencing of the *APOE* promoter region for Korean samples demonstrated that imputation accuracy of rs405509 was over 99%.

## 2.3. Statistical Genetic Analysis

### 2.3.1. Association of AD Risk with SNPs in the *APOE* Region

Association testing was performed in each dataset with SNPs in the *APOE* region encompassing 5.7 kb (19:45,406,947–19:45,412,650 based on build GRCh37) using logistic regression models that included covariates for age and sex implemented in SPSS version 23.0 for windows (IBM Corp, Armonk, NY, USA) and the R program, version 3.3.1 (<https://www.r-project.org/>). Models for the EuroA and AA groups also included terms for the first three principal components (PCs) of ancestry calculated previously [36] to account for population substructure. PC analysis was performed for the EastA groups using the smartpca program with EIGENSOFT [40,41]. PCs identified by these analyses that are significantly associated with AD were included in association test models for Koreans ( $n = 4$ ), Japanese ( $n = 5$ ), and combined EastAs ( $n = 3$ ). Analyses were conducted across all individuals and within subgroups containing individuals with *APOE* genotypes  $\epsilon 3/\epsilon 3$  and  $\epsilon 4/\epsilon 4$  or  $\epsilon 3/\epsilon 4$ . Results for each model were combined across datasets by meta-analysis within and across the ethnic group using the metafor package [42]. Heterogeneity across datasets was evaluated by Cochran's Q test and  $I^2$  statistics, and considered to be significant if  $P_{\text{heterogeneity}} (P_h) < 0.05$  and  $I^2 > 50\%$ . Because no analyses indicated significant heterogeneity, a fixed-effects model with inverse variance method was used to combine effect estimates.

### 2.3.2. Follow-up Association Analyses with rs405509

We evaluated the interaction of *APOE*  $\epsilon 4$  with rs405509 on AD risk by testing a model that included the main effects and an interaction term, as well as age, sex, and PCs. To evaluate the effect of the *APOE* promoter SNP, rs405509, genotypes in *APOE* isoform subgroups, we used a Cox proportional hazard model in the cross-sectional data, including the GARD Study, Japanese, and ADGC EuroA subjects. We used age as the time scale, with age at AD diagnosis as the event time for cases, and age at exam as the

censoring age for controls, and adjusted for sex and ethnic group [43]. The influence of *APOE* isoform and rs405509 genotypes on cortical thickness measures was assessed using general linear models (GLM) implemented in the Surfstat toolbox (<http://www.math.mcgill.ca/keith/surfstat/>) in MATLAB (R2012a, The Mathworks, Natick, MA, USA) with covariates sex, age, and field strength [44]. A random field theory (RFT)-based correction for multiple point-wise cortical thickness comparisons was applied at the cluster level with  $p = 0.05$  as the significance threshold [45] (<http://www.math.mcgill.ca/keith/surfstat/>). We also evaluated the effects of the  $\epsilon 4$  and rs405509 genotypes on hippocampal volumes and anatomical regions of interest (ROIs) using R, version 3.3.1 (<https://www.r-project.org/>). Hippocampal volume and ROI differences among subgroups defined by *APOE* isoform and rs405509 genotypes were assessed by analysis of covariance (ANCOVA) with *APOE* genotype as a fixed factor, and sex, age, field strength, education, and intracranial volume (ICV) as covariates [46,47]. To compare the degree of  $\epsilon 4$ -driven atrophy between EuroAs and EastAs, we conducted a t-test to compare the cortical thickness and hippocampal volume measures between  $\epsilon 4/\epsilon 4$  or  $\epsilon 3/\epsilon 4$  and  $\epsilon 3/\epsilon 3$  individuals within each ethnic group [48]. Since cortical thickness and hippocampal volume are highly correlated and tests of these outcomes are not independent, we applied a significance threshold of  $p < 0.05$ .

## 2.4. *APOE* Reporter Gene Assays

### 2.4.1. *APOE* Promoter Construct

Genomic DNA from the *APOE* promoter region (positions  $-1983$  to  $+935$ ) was amplified from one AD patient with  $\epsilon 4/\epsilon 4$  and rs405509-TT genotypes and one control with  $\epsilon 3/\epsilon 3$  and rs405509-GG genotypes) using the following primers: forward, 5'-GGGGTACCGAAAGCAGCGGATCCTTGAT-3'; reverse, 5'-CCCCTCGAGCTTCCTGCCTGTGATTGGC-3'. The amplified DNA from each subject was digested with KpnI and XhoI and ligated into the pGL3.basic vector (Promega, Madison, WI, USA). PCR based site-directed mutagenesis of rs405509 ( $-219G/T$ ) was carried out to replace T by G for the construct from AD patient and G by T from control using the following primers: T  $\rightarrow$  G forward, 5'-GAGGAGGGTGTCTGGATTACTGGGCGAG-3'; reverse, 5'-CTCGCCCAGTAATCCAGACACCCTCCTC-3', G  $\rightarrow$  T forward, 5'-GAGGAGGGTGTCTGTATTACTGGGCGAGG-3'; 5'-CCTCGCCCAGTAATACAGACACCCTCCTC-3'. The reactions were performed using PfuUltra High-Fidelity DNA Polymerase (Agilent Technologies Inc, Santa Clara, CA, USA).

### 2.4.2. Luciferase Assay

HEK 293T cells were cultured in 12-well plates. After 24 h, the cells were co-transfected with 0.25  $\mu\text{g}$  of pGL3 carrying the firefly luciferase reporter gene (Promega) and 0.25  $\mu\text{g}$  of pCMV- $\beta$ -galactosidase (Clontech, Palo Alto, CA, USA) using TransFectin™ Lipid Reagent for 24 h. Transfected cells were lysed with reporter lysis buffer (Promega). Luciferase and  $\beta$ -galactosidase activities were quantitated by using a GloMax® Luminometer (Promega) and Epoch microplate spectrophotometer (BioTek Instruments, Winooski, VT, USA), respectively. Luciferase activity for the *APOE* promoter was determined by normalizing with  $\beta$ -galactosidase activity. We examined the allele-specific functional impact of the promoter SNP rs405509 by measuring *APOE* expression using luciferase assays in HEK cells with the *APOE* promoter constructs containing different rs405509 alleles. Results obtained from three independent experiments were evaluated by *t*-test.

## 2.5. Human Postmortem Brain Tissues

Human postmortem cerebral cortical tissue specimens from eight  $\epsilon 3$  homozygotes, one  $\epsilon 2/\epsilon 3$  individual, four  $\epsilon 3/\epsilon 4$  individuals, and two  $\epsilon 4/\epsilon 4$  homozygotes were received from the Victorian Brain Bank Network (VBBN). Nine human postmortem cerebellar tissue specimens (all  $\epsilon 3$  homozygotes) were obtained from The Netherlands Brain Bank (NBB), Netherlands Institute for Neuroscience, Amsterdam (open access: <http://www.brainbank.nl>). Brain tissues collected by the NBB were



obtained with written informed consent for a brain autopsy and use of the material and clinical information for research purposes. Experimental procedures involving brain tissue are described in the Supplementary Materials.

### 3. Results

#### 3.1. Ethnic Variability in the Association of APOE $\epsilon 4$ with AD

The distributions of APOE genotypes and allele frequencies were significantly different between AD cases and controls in all ethnic groups (Tables S3 and S4) with increasing odds of AD among carriers of the  $\epsilon 4$  allele in a dose-dependent manner and lower odds of AD among  $\epsilon 2$  carriers (Table 1 and Tables S5). Comparison of the APOE genotype-specific ORs across ethnic groups showed that the magnitude of the effect of the  $\epsilon 3/\epsilon 4$  on AD risk was similar among EastAs (OR (odds ratio) = 5.0,  $p = 2.6 \times 10^{-152}$ ) and EuroAs (OR = 3.8,  $p = 2.0 \times 10^{-270}$ ), but higher than that for AAs (OR = 2.5,  $p = 1.3 \times 10^{-35}$ ). The odds of AD associated with  $\epsilon 4$  homozygosity varied substantially across ethnic groups (OR = 25.1, 14.4, and 8.2 for EastAs, EuroAs, and AAs, respectively) (Table 1). Similar distributions of APOE genotypes and patterns of association were observed in the EastA and EuroA brain amyloid imaging study participants (Tables S6 and S7).

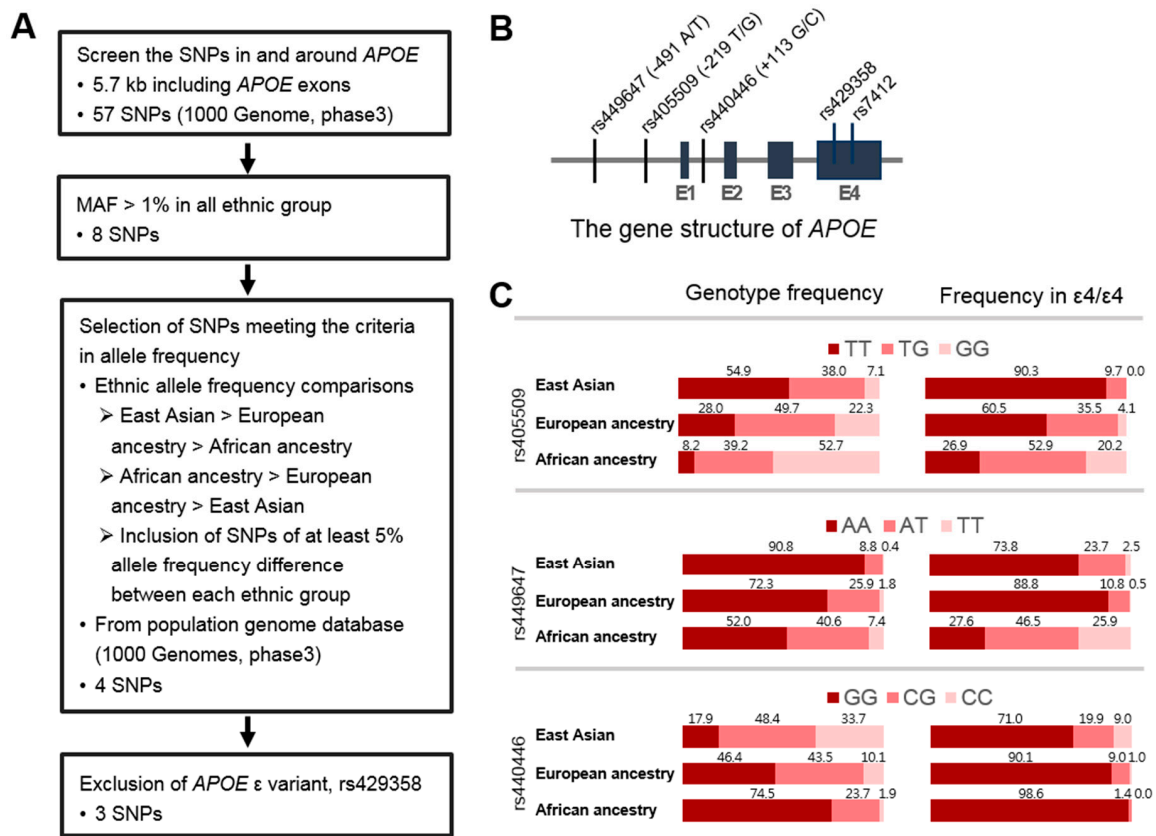
**Table 1.** Association of APOE  $\epsilon 4$  with Alzheimer's disease among East Asian, European ancestry, and African American individuals.

Population	N	Control/AD	$\epsilon 3/\epsilon 4$		$\epsilon 4/\epsilon 4$	
			OR (95% CI) <sup>a</sup>	<i>p</i>	OR (95% CI) <sup>a</sup>	<i>p</i>
East Asian <sup>b</sup>	19,398	17,096/2302	4.98 (4.4–5.6)	$2.6 \times 10^{-152}$	25.12 (19.0–33.5)	$2.8 \times 10^{-109}$
European ancestry (ADGC)	15,836	7417/8419	3.83 (3.6–4.1)	$2.0 \times 10^{-270}$	14.35 (12.0–17.1)	$2.3 \times 10^{-187}$
African ancestry (ADGC)	4985	3462/1523	2.49 (2.2–2.9)	$1.3 \times 10^{-35}$	8.17 (6.3–10.7)	$3.0 \times 10^{-54}$

Abbreviations: AD, Alzheimer's disease; OR, odds ratio; CI, confidence interval; *p*, *p*-value; ADGC, Alzheimer's Disease Genetics Consortium. <sup>a</sup>  $\epsilon 3/\epsilon 3$  is the reference genotype. <sup>b</sup> includes GARD (Gwangju Alzheimer's & Related Dementias) Study and Japanese subjects.

#### 3.2. Identification of SNPs in the APOE Region Contributing to Ethnic Variability in AD Risk

We hypothesized that the ethnic differences in the effect size of  $\epsilon 4/\epsilon 4$  on AD risk might be due to the moderating effect of variants in the APOE region that have different frequencies across ethnic groups. Furthermore, such variants would be progressively more or less frequent in EastAs, EuroAs, and AAs to account for the observed decreasing effect of  $\epsilon 4/\epsilon 4$  on AD risk in these groups, respectively [10]. To investigate this hypothesis, we screened the APOE region spanning the APOE promoter and 3'-UTR surrounding the APOE coding region to identify SNPs showing a progressive 5% or greater difference in allele frequency among the ethnic groups (Figure 1A and Table S8). Three out of 57 common SNPs (MAF > 1%) in this region (Figure 1B) met the criteria and were significantly associated with AD risk in the EastA group: rs449647 ( $p = 1.89 \times 10^{-9}$ ), rs405509 ( $p = 2.5 \times 10^{-8}$ ), and rs440446 ( $p = 1.08 \times 10^{-18}$ ). Among them, rs405509 showed the largest difference in allele frequencies among the population samples included in this study; the T allele frequency was 0.739, 0.528, and 0.278 for the EastA, EuroA, and AA groups, respectively (Figure 1C). These differences were more pronounced in the subgroup of  $\epsilon 4$  homozygotes. Large ethnic differences in allele and genotype frequencies were observed for rs449647 and rs440446; however, these differences were much smaller among  $\epsilon 4$  homozygotes. Based on these findings, subsequent analyses were focused on the APOE promoter SNP rs405509.



**Figure 1.** Single nucleotide polymorphisms (SNPs) in the *APOE* region modulate Alzheimer’s disease risk associated with the apolipoprotein E (*APOE*)  $\epsilon 4/\epsilon 4$  genotype. (A) Flow diagram showing the strategy for screening SNPs. (B) *APOE* gene structure. (C) Genotype frequencies for rs449647 (−491 A/T), rs405509 (−219 T/G), rs440446 (+113 G/C), rs429358, and rs7412 among all individuals and  $\epsilon 4/\epsilon 4$  individuals within East Asian, European ancestry, and African American groups. Abbreviations: SNP, single nucleotide polymorphism; MAF, minor allele frequency.

### 3.3. *APOE* Promoter SNP, rs405509, Modulates the $\epsilon 4$ Association for AD

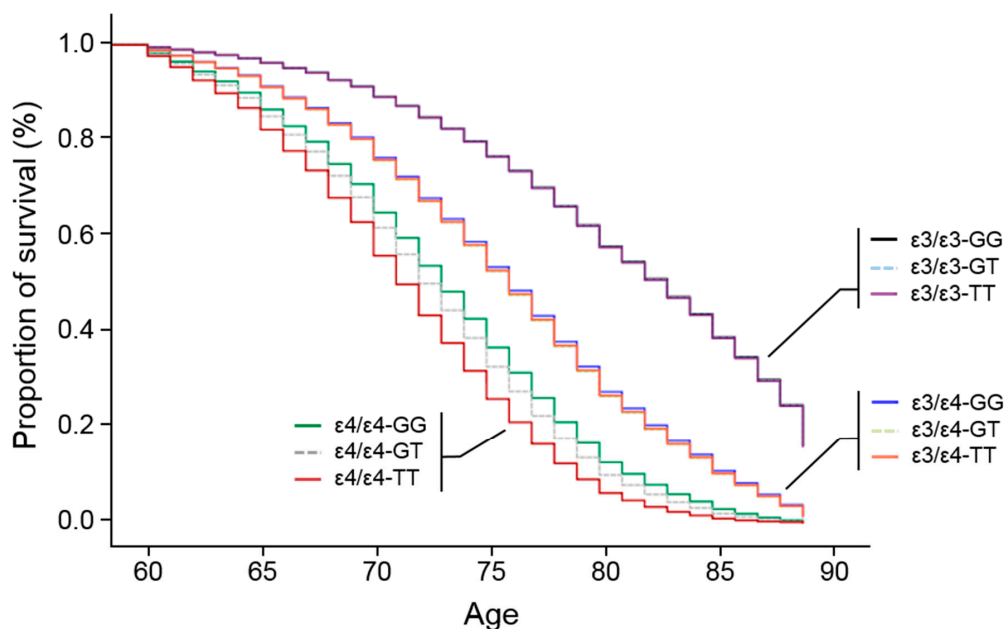
To investigate the joint influences of rs405509 and  $\epsilon 4$  on AD risk, we analyzed the association of *APOE* isoform genotype with AD within each rs405509 genotype and ethnic group. AAs were excluded from these analyses due to small samples for several *APOE*-rs405509 genotype subgroups. Results from these analyses showed increased odds of AD in a dose-dependent manner of the rs405509 T allele among  $\epsilon 4/\epsilon 4$ , but not  $\epsilon 3/\epsilon 4$ , compared to  $\epsilon 3/\epsilon 3$  individuals (Table 2). In the EastA group, the odds of AD associated with  $\epsilon 4/\epsilon 4$  were substantially higher for TT individuals (OR = 27.02, 95% CI = 19.81–37.18,  $p = 8.80 \times 10^{-94}$ ) compared to GT individuals (OR = 15.87, 95% CI = 6.32–39.49,  $p = 2.62 \times 10^{-9}$ ). A similar dose-dependent trend based on the number of T alleles was evident in the EuroA group (TT: OR = 18.13, 95% CI = 14.02–23.44,  $p = 2.69 \times 10^{-108}$ ; GT: OR = 12.63, 95% CI = 9.41–16.94,  $p = 3.44 \times 10^{-64}$ ; GG: OR = 8.35, 95% CI = 4.58–15.21,  $p = 4.07 \times 10^{-12}$ ). Among  $\epsilon 3/\epsilon 3$  and  $\epsilon 4/\epsilon 4$  individuals, the term for the interaction of *APOE* and rs405509 genotypes was significant in the EuroA group (OR = 1.40, 95%CI = 1.06–1.85,  $p = 0.17$ , Table S9). Although the interaction was not significant in the EastA group ( $p = 0.19$ ), the direction of effect was the same and stronger than in EuroAs (OR = 1.82, 95% CI = 0.75–4.47), and the interaction test was more significant in the combined EastA and EuroA groups ( $p = 0.0080$ , OR = 1.43, 95% CI = 1.10–1.87). The interaction was attenuated but not significant among  $\epsilon 3/\epsilon 3$  and  $\epsilon 3/\epsilon 4$  individuals in EastAs or EuroAs. Survival analysis by *APOE* isoform genotype ( $\epsilon 3/\epsilon 3$ ,  $\epsilon 3/\epsilon 4$ ,  $\epsilon 4/\epsilon 4$ ) confirmed a significant inverse relationship between age-at-onset and dosage of the  $\epsilon 4$  in the combined group of EastAs and EuroAs (Figure 2), regardless of rs405509 genotype ( $p < 0.0001$  for  $\epsilon 3/\epsilon 4$  and  $\epsilon 4/\epsilon 4$  compared to  $\epsilon 3/\epsilon 3$ ;  $p < 0.0001$  for  $\epsilon 4/\epsilon 4$

compared to  $\epsilon 3/\epsilon 4$ , an observation consistent with many studies [6,10]. Rs405509 genotype had little impact, if any, on age-at-onset among  $\epsilon 3/\epsilon 3$  or  $\epsilon 3/\epsilon 4$  individuals, whereas among  $\epsilon 4/\epsilon 4$  individuals, the age-at-onset distribution for rs405509 T allele homozygotes (hazard ratio, HR = 5.01,  $p = 4.94 \times 10^{-259}$ ) was progressively younger than that for those with the GT (HR = 4.23,  $p = 1.17 \times 10^{-132}$ ) or GG genotypes (HR = 3.79,  $p = 1.87 \times 10^{-28}$ ) (Figure 2 and Table S10). These results suggest that rs405509 T-allele acts as a modulator of age at onset among  $\epsilon 4/\epsilon 4$  individuals, consistent with our association analysis.

**Table 2.** Modifying effect of rs405509 on association of APOE (apolipoprotein E) genotype and Alzheimer’s disease.

Population	rs405509	n	$\epsilon 3/\epsilon 3$		$\epsilon 3/\epsilon 4$		$\epsilon 4/\epsilon 4$	
			Ref	Odds Ratio (95% CI)	Ref	p	Odds Ratio (95% CI)	p
East Asian	TT	9770	Ref	5.13 (4.40–5.98)		$5.10 \times 10^{-98}$	27.02 (19.81–37.18)	$8.80 \times 10^{-94}$
	GT	7941	Ref	4.55 (3.69–5.61)		$1.09 \times 10^{-45}$	15.87 (6.32–39.49)	$2.62 \times 10^{-9}$
	GG	1681	Ref	3.55 (1.38–8.60)		0.006	NA <sup>a</sup>	-
European ancestry (ADGC)	TT	4713	Ref	4.25 (3.71–4.88)		$1.55 \times 10^{-94}$	18.13 (14.02–23.44)	$2.69 \times 10^{-108}$
	GT	7510	Ref	3.89 (3.49–4.34)		$2.55 \times 10^{-134}$	12.63 (9.41–16.94)	$3.44 \times 10^{-64}$
	GG	3385	Ref	3.39 (2.81–4.09)		$4.87 \times 10^{-37}$	8.35 (4.58–15.21)	$4.07 \times 10^{-12}$
Total	TT	14,483	Ref	4.62 (4.17–5.11)		$2.60 \times 10^{-187}$	20.96 (17.07–25.73)	$7.69 \times 10^{-186}$
	GT	15,451	Ref	4.10 (3.55–4.74)		$4.53 \times 10^{-176}$	12.90 (9.75–17.07)	$1.05 \times 10^{-71}$
	GG	5066	Ref	3.40 (2.83–4.08)		$7.16 \times 10^{-39}$	8.44 (4.66–15.27)	$1.84 \times 10^{-12}$

Abbreviations: CI, confidence interval; p, p-value; ref, reference; ADGC, Alzheimer’s disease Genetics Consortium.  
<sup>a</sup> NA: result not available due to a very small number of controls with both  $\epsilon 4/\epsilon 4$  and GG genotypes ( $n = 1$ ). The odds ratios were adjusted for age and sex.

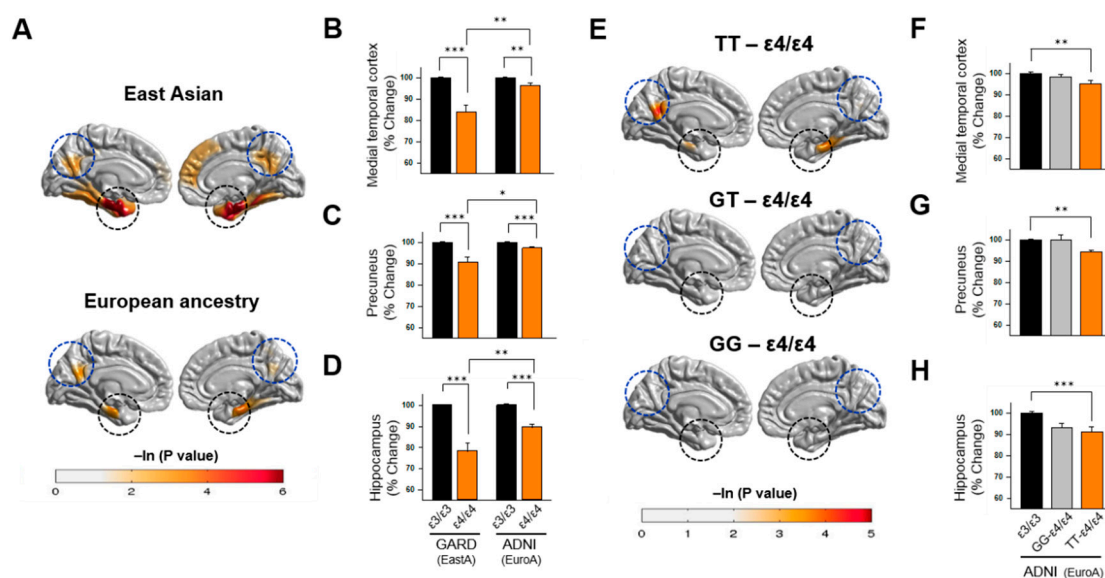


**Figure 2.** Rs405509 influences age at onset of Alzheimer’s disease. The effect of rs405509 genotype on age at onset was evaluated by survival analysis using Cox regression models adjusted for sex. Curves are shown for individuals with the following APOE isoform and rs405509 genotype combinations:  $\epsilon 4/\epsilon 4$ -TT (dark red line),  $\epsilon 4/\epsilon 4$ -GT (dotted gray line),  $\epsilon 4/\epsilon 4$ -GG (green line),  $\epsilon 3/\epsilon 4$ -TT (orange line),  $\epsilon 3/\epsilon 4$ -GT (dotted light gray line),  $\epsilon 3/\epsilon 4$ -GG (blue line),  $\epsilon 3/\epsilon 3$ -TT (purple line),  $\epsilon 3/\epsilon 3$ -GT (dotted light blue line), and  $\epsilon 3/\epsilon 3$ -GG (black line).



### 3.4. Association of APOE Polymorphisms with Brain Atrophy

To determine whether the observed ethnic differences in the effect of  $\epsilon 4/\epsilon 4$  on AD risk extends to AD-related structural brain changes, we evaluated the association of APOE genotype with several brain MRI measures in the GARD EastA and ADNI EuroA samples (Table S11). We observed that  $\epsilon 4/\epsilon 4$  individuals exhibited greater thinning in several cortical areas compared to  $\epsilon 3/\epsilon 3$  individuals (Figure 3). Surprisingly, cortical thinning in these regions was greater in EastA individuals than EuroA individuals in both APOE genotype groups. Analysis of specific regions showed the largest differences ( $p < 0.01$  for both ethnic groups) in the medial temporal cortex, precuneus, and hippocampus (Figure 3B–D, and Table S12). The shrinkage in the medial temporal cortex and hippocampus among  $\epsilon 4/\epsilon 4$  individuals was significantly greater in EastAs than EuroAs ( $p < 0.05$ ). Greater cortical thinning was also observed in  $\epsilon 3/\epsilon 4$  individuals compared to  $\epsilon 3/\epsilon 3$  individuals in both EastA and EuroA groups (Figure S1), although the genotype-associated differences were greater in EuroAs than EastAs (Table S13).



**Figure 3.** APOE  $\epsilon 4/\epsilon 4$ -sensitive brain atrophy is greater in East Asians (EastA) compared to individuals of European ancestry (EuroA). (A) Cortical thinning maps in EastAs and EuroAs. A general linear model was applied to infer the point-wise cortical thickness differences using APOE genotype ( $\epsilon 4/\epsilon 4$  vs.  $\epsilon 3/\epsilon 3$ ) as a predictor adjusted for age, sex, and field strength covariates. Statistically greater thinning in  $\epsilon 4/\epsilon 4$  compared to  $\epsilon 3/\epsilon 3$  individuals is shown for the entorhinal and parahippocampal regions (encompassed in dotted black circles) and precuneus region (encompassed in blue circles). Average cortical thickness in the medial temporal cortex (entorhinal and parahippocampal regions (B)), precuneus (C), and hippocampus (D) was compared between APOE genotypes  $\epsilon 4/\epsilon 4$  and  $\epsilon 3/\epsilon 3$  in EastA and EuroA individuals. Data were normalized to  $\epsilon 3/\epsilon 3$  and shown as percentages with error bars indicated above the bar plot (\*  $p < 0.05$ , \*\*  $p < 0.01$ , \*\*\*  $p < 0.001$ ). (E) Cortical thinning in EuroAs comparing individuals with combinations of rs405509- $\epsilon 4/\epsilon 4$  genotypes with the  $\epsilon 3/\epsilon 3$  genotype using a general linear model and showing regional differences as described in Panel A. Average cortical thickness in the medial temporal cortex (entorhinal and parahippocampal regions, (F)), precuneus (G), and hippocampus (H) was compared between  $\epsilon 3/\epsilon 3$  and either rs405509 (TT)- $\epsilon 4/\epsilon 4$  or rs405509 (GG)- $\epsilon 4/\epsilon 4$  individuals. Data were normalized to  $\epsilon 3/\epsilon 3$  and shown as a percentage with error bars indicated above the bar plot (\*  $p < 0.05$ , \*\*  $p < 0.01$ , \*\*\*  $p < 0.001$ ). Abbreviations: GARD, Gwangju Alzheimer’s and Related Dementias Study; EastA, East Asian; ADNI, Alzheimer’s Disease Neuroimaging Initiative; EuroA, European ancestry.

Examination of the effect of rs405509 on AD-related brain changes in the EastA dataset (Figure 3E) revealed that  $\epsilon 4/\epsilon 4$ -TT individuals showed significant reduction ( $p < 0.05$ ) in the medial temporal cortex (Figure 3F), precuneus (Figure 3G), and hippocampus (Figure 3H) compared to  $\epsilon 3/\epsilon 3$  individuals.

Further analysis in the EuroA dataset revealed that among individuals with the rs405509 *TT* genotype,  $\epsilon 4$  homozygotes exhibited significantly greater atrophy in the medial temporal cortex ( $F = 6.33$ ,  $p = 0.013$ ), precuneus ( $F = 8.27$ ,  $p = 0.005$ ), and hippocampus ( $F = 18.13$ ,  $p = 3.4 \times 10^{-5}$ ) compared to  $\epsilon 3$  homozygotes, whereas  $\epsilon 4$  homozygotes showed no significant difference in any of the cortical regions compared to  $\epsilon 3$  homozygotes among individuals with the rs405509 *GG* genotype (Table 3). Similar patterns were observed among EuroAs in comparisons of  $\epsilon 3/\epsilon 4$ -*TT* with  $\epsilon 3/\epsilon 3$ -*TT* individuals and  $\epsilon 3/\epsilon 4$ -*GG* with  $\epsilon 3/\epsilon 3$ -*GG* individuals (Table 3) and in comparisons of  $\epsilon 3/\epsilon 4$ -*TT* or  $\epsilon 3/\epsilon 4$ -*GG* with  $\epsilon 3/\epsilon 3$  individuals (Figure S1).

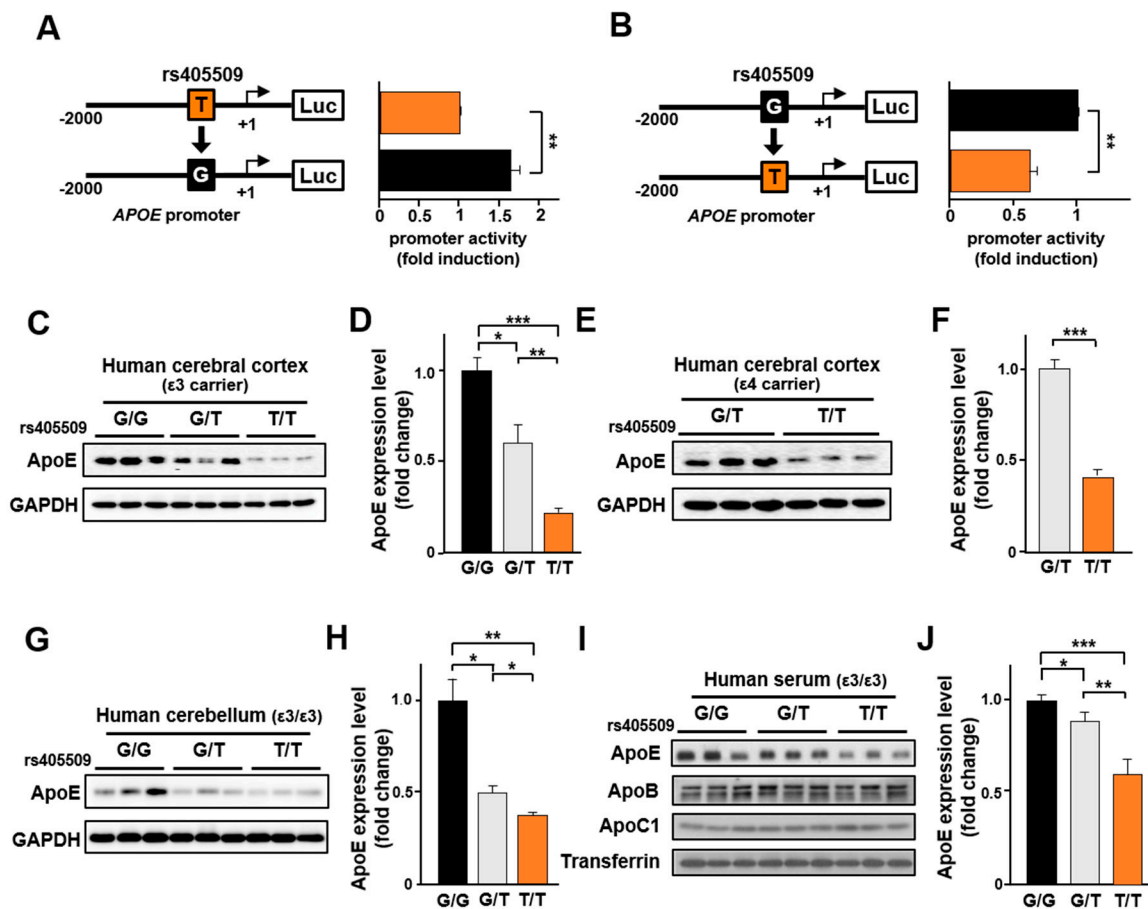
**Table 3.** Modifying effect of rs405509 genotype on the association of APOE  $\epsilon 4$  with cortical atrophy in European ancestry ADNI (Alzheimer’s Disease Neuroimaging Initiative) participants.

Region of Interest	rs405509- <i>TT</i>				rs405509- <i>GG</i>			
	$\epsilon 4/\epsilon 4$ vs. $\epsilon 3/\epsilon 3$ ( $n = 175$ )		$\epsilon 3/\epsilon 4$ vs. $\epsilon 3/\epsilon 3$ ( $n = 239$ )		$\epsilon 4/\epsilon 4$ vs. $\epsilon 3/\epsilon 3$ ( $n = 128$ )		$\epsilon 3/\epsilon 4$ vs. $\epsilon 3/\epsilon 3$ ( $n = 161$ )	
	F-value	<i>p</i>	F-value	<i>p</i>	F-value	<i>p</i>	F-value	<i>p</i>
Medial temporal cortex *	6.33	0.013	1.95	0.16	0.04	0.85	0.24	0.62
Precuneus	8.27	0.005	4.58	0.03	0.01	0.92	0.10	0.75
Hippocampal Volume	18.13	$3.4 \times 10^{-5}$	7.40	0.04	1.43	0.24	2.65	0.11

Abbreviations: *p*, *p*-value. \* Medial temporal cortex includes both parahippocampal and entorhinal cortex.

### 3.5. Rs405509 Regulates APOE Expression

To determine if rs405509 is an expression quantitative trait locus (eQTL) for *APOE*, the effect of rs405509 on *APOE* transcription was analyzed by reporter gene assay using *APOE* promoter fragments from an AD patient with the rs405509 *T* allele and a cognitively normal person with the rs405509 *G* allele. The rs405509 allele in each promoter region was changed to the alternative-allele by site-directed mutagenesis and then subjected to a luciferase-based reporter gene assay (Figure 4A,B). The T to G base substitution resulted in a 1.66-fold increase in *APOE* promoter activity ( $p < 0.01$ ), whereas the G to T substitution resulted in a 60% decrease in promoter activity ( $p < 0.01$ ), indicating that the *T* allele reduced *APOE* transcription compared to the *G* allele. Next, we performed Western blotting in brain and blood specimens from  $\epsilon 3$  and  $\epsilon 4$  carriers who collectively have rs405509 *TT*, *GT*, and *GG* genotypes to determine whether *T*-allele dependent expression of *APOE* occurred in these tissues (Figure 4C–J). The level of apoE protein was significantly lower in cerebral cortex among *TT* individuals compared to those with *G*-allele in a *T*-allele dose-dependent manner in  $\epsilon 3$  carriers ( $p < 0.01$  in Figure 4C,D) and  $\epsilon 4$  carriers ( $p < 0.001$  in Figure 4E,F). *T*-allele dose-dependent *APOE* expression in the cerebellum ( $p < 0.05$  in Figure 4G,H) and blood ( $p < 0.05$  in Figure 4I,J) was also evident in  $\epsilon 3/\epsilon 3$  individuals. Taken together, these results suggest that the modifying effect of rs405509 genotype on the association of *APOE* with risk and age at onset of AD is due to its influence on the level of apoE protein.



**Figure 4.** The rs405509 T-allele reduces *APOE* expression. To investigate whether rs405509 alleles directly affect the *APOE* expression, the *APOE* promoter region was subjected to a reporter gene assay. *APOE* promoter DNA fragments were cloned from an AD patient (A) and a cognitively normal control subject (B). The rs405509 T-allele was changed to a G allele by site-directed mutagenesis (A) and vice versa (B). The horizontal bar graphs show the relative intensities of *APOE* promoter activity. Data represent mean  $\pm$  SEM ( $n = 5$ , \*\*  $p < 0.01$ ). (C–J) The rs405509-dependent apoE protein level was assessed in human brain tissue and serum. (C, E, and G) Cerebral cortical and cerebellar tissues were subjected to Western blotting with anti-apoE and anti-GAPDH antibodies to investigate rs405509 genotype-dependent expression levels of apoE in the brain. The cerebral cortical tissues in panel C were from  $\epsilon 3/\epsilon 3$  homozygotes except for one  $\epsilon 2/\epsilon 3$  individual (lane 1). The cortical tissues in panel E were from individuals with  $\epsilon 3/\epsilon 4$  (lanes 1, 2, 4, and 5) or  $\epsilon 4/\epsilon 4$  (lanes 3 and 6) genotypes. All cerebellar tissues in panel G were from  $\epsilon 3$  homozygotes. (D and H) Relative expression of *APOE* in cerebral cortex and cerebellum among  $\epsilon 3$  carriers stratified by rs405509 genotype (G/G, G/T, and T/T) with G/G used as the reference and GAPDH used as a normalized control. Data represent mean  $\pm$  SEM. (F) Relative expression of *APOE* in cerebral cortex among  $\epsilon 4$  carriers stratified by rs405509 genotype (G/T and T/T) with G/T used as the reference and GAPDH used as a normalized control. Data represent mean  $\pm$  SEM. (I) Blood samples were subjected to Western blotting with anti-apoE, anti-apoB, anti-apoC1, and anti-Transferrin antibodies to investigate rs405509 genotype-dependent expression of apoE. (J) Relative expression of apoE in human serum among  $\epsilon 3/\epsilon 3$  individuals stratified by rs405509 genotype with G/G used as the reference. Data represent mean  $\pm$  SEM. \*  $p < 0.05$ , \*\*  $p < 0.01$ , \*\*\*  $p < 0.001$ . Abbreviations: ApoE, Apolipoprotein E; ApoC1, Apolipoprotein C1; ApoB, Apolipoprotein B; GAPDH, Glyceraldehyde-3-Phosphate Dehydrogenase.

#### 4. Discussion

Although the *APOE*  $\epsilon 4$  allele is one of the most well-established AD risk factors and the genetic variant that by far confers the strongest effect on disease risk [6,10,49], most studies of this association

in non-EuroA populations have not precisely quantified for *APOE* genotype-associated risks for  $\epsilon 4$  heterozygotes and  $\epsilon 4$  homozygotes with notable exceptions of AAs [10,27], Caribbean Hispanics [50], Indians [51], and Han Chinese [52]. Similar to Chinese [52], our study showed that the effect of  $\epsilon 4$  on AD risk was stronger in Koreans and Japanese than in EuroAs and other non-EuroA populations, including AAs, Indians, and Israeli-Arabs [53]. Ethnic differences in the effect size of this association might be due to differences in allele frequency such that the proportional difference in the  $\epsilon 4$  frequency between cases and controls resulted in a larger odds ratio even though the absolute difference in the allele frequency was similar across the population. In other words, in comparison to EuroAs, the  $\epsilon 4$ /AD association was stronger in EastAs who had a lower  $\epsilon 4$  frequency and weaker in AAs who had a higher  $\epsilon 4$  frequency. Alternatively, lifestyle, diet, and other genetic or non-genetic factors may account for differences in the association across populations [54,55].

Consistent with findings in previous studies conducted in EuroAs [56–58], we demonstrated that  $\epsilon 4$  accelerated the cortical thinning in regions of the entorhinal cortex, parahippocampal cortex, and precuneus in EastA individuals. Surprisingly, cortical and hippocampal atrophy observed in  $\epsilon 4/\epsilon 4$  individuals was more severe in EastAs than EuroAs. There is no obvious explanation to account for ethnic differences, but this observation is consistent with the idea of interaction of the  $\epsilon 4/\epsilon 4$  genotype with exogenous or other genetic factors.

We hypothesized that the difference in  $\epsilon 4/\epsilon 4$ -mediated AD risk between populations might be due in part to differences in genetic background. Numerous studies have suggested that variants within the *APOE* promoter and intronic regions, in particular, promoter SNPs rs449647 (-491A/T) and rs405509 (-219T/G), independently of or synergistically with *APOE*  $\epsilon 4$  modulate AD risk [59–62], although other studies were unable to replicate these findings [63–68]. In addition, rs405509 has been reported to interact with  $\epsilon 4$  to accelerate cognitive impairment in non-demented elderly [69]. We, therefore, limited our testing to SNPs within the interval between *TOMM40* and *APOC1* (which includes the *APOE* coding region, promoter, and 3'-UTR), whose allelic frequencies vary progressively by at least 5% across EastAs, EuroAs, and AAs and may modulate (and are most likely responsible for ethnic differences in) the effect of  $\epsilon 4$  on AD risk. Through a series of filtering steps, we narrowed a pool of 57 SNPs in this region to two *APOE* promoter SNPs (rs405509 and rs449647) and one *APOE* intronic SNP (rs440646) for formal testing of our hypothesis. Among these SNPs, only rs405509 showed a consistently large difference in genotype frequencies across ethnic groups that could account for the observed variability in the magnitude of effect of  $\epsilon 4$  on AD risk (Figure 1C), particularly the effect of the rs405509 *TT* genotype among  $\epsilon 4/\epsilon 4$  individuals that was evident in both EastAs and EuroAs (Table 2). Individuals with both of these homozygous genotypes also had significantly younger-onset ages than those with other rs405509 genotypes (Figure 2).

Several studies reported association of rs405509 with AD risk [60,62,70,71], but this relationship is controversial [64,66–68,72]. However, many of these studies considered rs405509 as an independent risk factor for AD without accounting for the high linkage disequilibrium between this SNP and the SNPs that define the *APOE* isoform genotypes. Consistent with our findings, Ma et al. demonstrated that rs405509-*T* homozygosity modulated the  $\epsilon 4$  effect on cognitive performance and brain gray matter atrophy among the elderly [73].

Our findings also suggested that the synergistic effect of rs405509-*TT* and  $\epsilon 4/\epsilon 4$  extended to AD-related neurodegeneration. Individuals with both of these genotypes, but not those with the combination of *GG* and  $\epsilon 4/\epsilon 4$ , exhibited significantly greater atrophy in the medial temporal cortex, precuneus, and hippocampus compared to  $\epsilon 3$  homozygotes with the corresponding rs405509 genotypes. These observations are consistent with results of a prior study showing an accelerated age-related reduction of thickness in the left parahippocampal gyrus among *TT* non-demented Chinese elders compared with the *G*-allele carriers from the same cohort; however, this finding might be confounded with the unadjusted effect of  $\epsilon 4$  [74].

Our reporter gene assay experiments using *APOE* promoter fragments from an AD patient with the rs405509 *T* allele and a cognitively normal person with rs405509-*G* allele demonstrated that

the *TT* genotype lowered apoE expression in human brain and serum. The assays involving the replacement of the *T* with the *G* allele or vice-versa confirmed that an *APOE* gene with the *T* allele in the promoter was less expressed. Moreover, we demonstrated a significantly lower level of apoE protein among individuals with the rs405509 *TT* genotype compared to those with the *GG* and *GT* genotypes. Taken together, these results suggest that the increased risk of AD, a tendency toward earlier onset of disease symptoms, and a greater degree of cortical degeneration among individuals with the *TT* and  $\epsilon 4/\epsilon 4$  genotypes are direct consequences of reduced expression of *APOE*. Recently, longitudinal cohort studies including more than 75,000 individuals found that low levels of apoE were associated with increased risk of developing AD and dementia more generally in the future [75,76], supporting our observation that the reduced apoE level in  $\epsilon 4$  homozygotes with rs405509 *TT* genotype increased the onset of AD. It has also been shown that brain amyloid load is inversely correlated with *APOE* expression level and that *APOE* expression is lower in AD cases than controls [77].

Some of the findings reported here should be interpreted cautiously in light of several limitations to our study. The KoGES population controls were not cognitively screened and on average were 17 years younger than Korean controls from the GARD Study. However, subject misclassification would likely bias the results toward the null hypothesis. Our sample of EastAs lacked the power to show statistically significant differences in the magnitude of the moderating effect of each rs405509 genotype on the association of  $\epsilon 4$  homozygosity on AD risk, age at onset, and AD-related neurodegeneration, although the magnitude and direction of effects were comparable to those for the much larger EuroA sample. The odds of AD associated with  $\epsilon 4$  homozygosity among EastAs with the rs405509-*GG* genotype could not be estimated due to small cell sizes. The relatively small number of AAs and the low frequency of rs405509-*TT* in that group (8.2%) did not allow testing of this interaction in AAs. In addition, the association findings with rs405509 might not be causal because they could be due to linkage disequilibrium with an untested functional variant in this region. However, our findings in support of rs405509 genotype-specific effects on the association of *APOE* and AD risk were validated by results, showing an influence of rs405509 genotype on apoE levels in human brain and blood, and the reporter gene assay experiments. Finally, we did not have a sufficient number of subjects with both *APOE*  $\epsilon 4/\epsilon 4$  and rs405509-*GG* genotypes to make the important comparison of the differential effects of rs405509 genotypes on *APOE* expression in the  $\epsilon 4/\epsilon 4$  group. That said, there is no expectation that the impact of the promoter SNP on *APOE* expression would vary by *APOE* isoform; if there was any effect, it would be on transcription which would unlikely be impacted by the coding SNPs that determine the apoE isoforms. Although we demonstrated that the rs405509 *T* allele lowered the apoE level in  $\epsilon 3$  homozygotes and  $\epsilon 4$  carriers, but we were unable to evaluate this relationship in  $\epsilon 4$  homozygotes due to limited sample size. Thus, it is reasonable to conclude that reduced *APOE* expression in the brain or blood of subjects lacking  $\epsilon 4$  does not increase AD risk or that the influence of rs405509 genotype on expression of *APOE* is even greater among subjects who are *APOE*  $\epsilon 4/\epsilon 4$ . The latter explanation is consistent with evidence that  $\epsilon 4$  homozygotes have greatly reduced apoE levels compared to those with other *APOE* genotypes [75,78,79].

In conclusion, we confirmed previous findings that the risk of AD associated with homozygosity of the *APOE*  $\epsilon 4$  allele is greater in EastAs than EuroAs or AAs. Although this observation can be explained in part by population differences in the  $\epsilon 4$  frequency, the ethnic difference in the  $\epsilon 4/\epsilon 4$ -mediated increased risk for AD and neurodegeneration is likely a direct consequence moderating effects on *APOE* expression by rs405509 genotypes, whose frequencies vary widely across EastAs, EuroAs, and AAs.

**Supplementary Materials:** The following are available online at <http://www.mdpi.com/2077-0383/8/8/1236/s1>, Supplementary Methods: Cognitive and clinical measures, Magnetic resonance (MR) imaging, MR image data processing, PET imaging, PET image data processing, ApoE expression in human brain and serum, Figure S1: *APOE*  $\epsilon 3/\epsilon 4$ -sensitive brain atrophy, Table S1: Demographic characteristics of participants included in genetic association analyses, Table S2: Demographic characteristics of participants assessed for brain, Table S3: Distribution of *APOE* genotype and allele frequencies in AD and control groups, Table S4: Distribution of *APOE* genotype and allele frequencies in East Asian AD cases and control groups, Table S5: Odds of Alzheimer's disease according to *APOE* genotype among ethnic groups, Table S6: Distribution of *APOE* genotype and allele frequencies in participants assessed for amyloid burden, Table S7: Association of *APOE* genotype with amyloid burden among



East Asian (EastA) and European ancestry (EuroA) individuals, Table S8: *APOE* region SNP allele frequencies across ethnic groups, Table S9: Association of the interaction between *APOE* and rs405509 genotypes with AD risk, Table S10: *APOE* promoter SNP rs405509 influences age at onset of AD, Table S11: Demographic characteristics of participants with neuroimaging data, Table S12: Effects of *APOE*  $\epsilon 4/\epsilon 4$  versus  $\epsilon 3/\epsilon 3$  genotypes on measures of brain structure, Table S13: Effects of *APOE*  $\epsilon 3/\epsilon 4$  versus  $\epsilon 3/\epsilon 3$  genotypes on measures of brain structure.

**Author Contributions:** Conceptualization, K.Y.C, J.J.L, T.I.G., S.K., G.R.J, L.A.F, and K.H.L; Data curation, K.Y.C, J.J.L, T.I.G., S.K., X.Z., C.Z., K.N., B.C.K., H.K., G.R.J, G.D.S., T.I., L.A.F, and K.H.L; Formal analysis, K.Y.C, J.J.L, T.I.G., S.K., W.L., J.J., H.J.L, X.Z., C.Z., S.-Y.W., Y.Y.C., E.H.S., S.C.L., J.G., S.S., K.L.L., S.W., S.R., K.N., G.R.J, L.A.F, and K.H.L; Funding acquisition, T.I., L.A.F, and K.H.L; Investigation, K.Y.C, J.J.L, W.K.S., J.S.L., L.A.F, and K.H.L; Project administration, K.Y.C, J.J.L, and K.H.L; Resources, W.L., H.J.L, S.-Y.W., J.Y.C., A.C., M.S.B., P.-W.K., J.-W.H., C.M., J.F., K.L.L., A.M., N.H., S.-M.C., J.-M.H., J.H.J., R.K., M.K.S., S.S.A.A., Y.M.L., K.W.P, H.-W.L., S.H.C., R.M., J.L.H., M.A.P.-V., I.H.C., K.N., K.-W.K., D.Y.L., S.Y.K., B.C.K., H.K., G.R.J, G.D.S., T.I., L.A.F, and K.H.L; Supervision, K.Y.C, J.J.L, L.A.F, and K.H.L; Validation, K.Y.C, J.J.L, T.I.G., S.K., G.R.J, L.A.F, and K.H.L; Visualization, K.Y.C, J.J.L, T.I.G., S.K., W.L., J.J., H.J.L, X.Z., C.Z., and S.-Y.W.; Writing—original draft, K.Y.C, J.J.L, T.I.G., S.K., H.J.L, S.-Y.W., G.R.J, L.A.F, and K.H.L; Writing—review and editing, K.Y.C, J.J.L, T.I.G., S.K., K.L.L., W.K.S., J.S.L., R.M., J.L.H., M.A.P.-V., K.-W.K., D.Y.L., S.Y.K., B.C.K., H.K., G.R.J, G.D.S., T.I., L.A.F, and K.H.L.

**Funding:** This research was supported by the Original Technology Research Program for Brain Science of the National Research Foundation (NRF) funded by the Korean government, MSIT (NRF-2014M3C7A1046041 to K.H.L.), and by grants from the National Institute on Aging (R01-AG048927, P30-AG13846, and RF1-AG057519 to L.A.F.), and by the Japan Agency for Medical Research and Development (AMED) (JP18kk0205009 to T.I.). The Alzheimer’s Disease Genetics Consortium supported the collection of samples used in this study through the National Institute on Aging (NIA) grants U01-AG032984 and RC2AG036528. Data for this study were prepared, archived, and distributed by the National Institute on Aging Alzheimer’s Disease Data Storage Site (NIAGADS) at the University of Pennsylvania and funded by NIA grant U24-AG041689-01. Samples from the National Centralized Repository for Alzheimer’s Disease and Related Dementias (NCRAD), which receives government support under a cooperative agreement grant (U24 AG21886) awarded by the National Institute on Aging (NIA), were used in this study. We thank contributors who collected samples used in this study, as well as patients and their families, whose help and participation made this work possible. The NACC database is funded by NIA/NIH Grant U01 AG016976. NACC data are contributed by the NIA-funded ADCs: P30 AG019610 (PI Eric Reiman, MD), P30 AG013846 (PI Neil Kowall, MD), P50 AG008702 (PI Scott Small, MD), P50 AG025688 (PI Allan Levey, MD, PhD), P50 AG047266 (PI Todd Golde, MD, PhD), P30 AG010133 (PI Andrew Saykin, PsyD), P50 AG005146 (PI Marilyn Albert, PhD), P50 AG005134 (PI Bradley Hyman, MD, PhD), P50 AG016574 (PI Ronald Petersen, MD, PhD), P50 AG005138 (PI Mary Sano, PhD), P30 AG008051 (PI Thomas Wisniewski, MD), P30 AG013854 (PI M. Marsel Mesulam, MD), P30 AG008017 (PI Jeffrey Kaye, MD), P30 AG010161 (PI David Bennett, MD), P50 AG047366 (PI Victor Henderson, MD, MS), P30 AG010129 (PI Charles DeCarli, MD), P50 AG016573 (PI Frank LaFerla, PhD), P50 AG005131 (PI James Brewer, MD, PhD), P50 AG023501 (PI Bruce Miller, MD), P30 AG035982 (PI Russell Swerdlow, MD), P30 AG028383 (PI Linda Van Eldik, PhD), P30 AG053760 (PI Henry Paulson, MD, PhD), P30 AG010124 (PI John Trojanowski, MD, PhD), P50 AG005133 (PI Oscar Lopez, MD), P50 AG005142 (PI Helena Chui, MD), P30 AG012300 (PI Roger Rosenberg, MD), P30 AG049638 (PI Suzanne Craft, PhD), P50 AG005136 (PI Thomas Grabowski, MD), P50 AG033514 (PI Sanjay Asthana, MD, FRCP), P50 AG005681 (PI John Morris, MD), P50 AG047270 (PI Stephen Strittmatter, MD, PhD). ROSMAP data were generated with support from NIA grants P30-AG10161, R01-AG17917, R01-AG36042, and U01-AG46152.

**Acknowledgments:** Biospecimens and data for some of the Korean participants used for this study were provided by the National Biobank of Korea and the Centers for Disease Control and Prevention, Republic of Korea (KBP 2016-026) and the Biobank of Pusan National University Hospital, a member of the Korea Biobank Network. The human cerebral cortical tissue specimens were obtained from the Victorian Brain Bank Network (VBBN), supported by The Florey Institute of Neuroscience and Mental Health, The Alfred Hospital, and the Victorian Forensic Institute of Medicine and funded in part by Australia’s Health and Medical Research Council and Parkinson’s Victoria. The human cerebellar tissue specimens were obtained from the Netherlands Brain Bank (NBB). The authors are grateful to the ADNI study volunteers and their families. Some data used in the preparation of this article were obtained from the Alzheimer’s Disease Neuroimaging Initiative (ADNI) database ([adni.loni.usc.edu](http://adni.loni.usc.edu)). Therefore, the investigators within the ADNI contributed to the design and implementation of ADNI and/or provided data but did not participate in analysis or writing of this report. A complete listing of ADNI investigators can be found at [http://adni.loni.usc.edu/wp-content/uploads/how\\_to\\_apply/ADNI\\_Acknowledgement\\_List.pdf](http://adni.loni.usc.edu/wp-content/uploads/how_to_apply/ADNI_Acknowledgement_List.pdf).

**Conflicts of Interest:** The authors declare no conflict of interest.

## References

1. Barnes, D.E.; Yaffe, K. The projected effect of risk factor reduction on Alzheimer’s disease prevalence. *Lancet Neurol.* **2011**, *10*, 819–828. [[CrossRef](#)]
2. Alzheimer’s Association. 2012 Alzheimer’s disease facts and figures. *Alzheimers Dement.* **2012**, *8*, 131–168. [[CrossRef](#)] [[PubMed](#)]

3. Jack, C.R., Jr. Alzheimer disease: New concepts on its neurobiology and the clinical role imaging will play. *Radiology* **2012**, *263*, 344–361. [[CrossRef](#)] [[PubMed](#)]
4. Trojanowski, J.Q.; Vandeerstichele, H.; Korecka, M.; Clark, C.M.; Aisen, P.S.; Petersen, R.C.; Blennow, K.; Soares, H.; Simon, A.; Lewczuk, P.; et al. Update on the biomarker core of the Alzheimer's Disease Neuroimaging Initiative subjects. *Alzheimers Dement.* **2010**, *6*, 230–238. [[CrossRef](#)] [[PubMed](#)]
5. Rocchi, A.; Pellegrini, S.; Siciliano, G.; Murri, L. Causative and susceptibility genes for Alzheimer's disease: A review. *Brain Res. Bull.* **2003**, *61*, 1–24. [[CrossRef](#)]
6. Corder, E.H.; Saunders, A.M.; Strittmatter, W.J.; Schmechel, D.E.; Gaskell, P.C.; Small, G.W.; Roses, A.D.; Haines, J.L.; Pericak-Vance, M.A. Gene dose of apolipoprotein E type 4 allele and the risk of Alzheimer's disease in late onset families. *Science* **1993**, *261*, 921–923. [[CrossRef](#)] [[PubMed](#)]
7. Strittmatter, W.J.; Saunders, A.M.; Schmechel, D.; Pericak-Vance, M.; Enghild, J.; Salvesen, G.S.; Roses, A.D. Apolipoprotein E: High-avidity binding to beta-amyloid and increased frequency of type 4 allele in late-onset familial Alzheimer disease. *Proc. Natl. Acad. Sci. USA* **1993**, *90*, 1977–1981. [[CrossRef](#)] [[PubMed](#)]
8. Myers, R.H.; Schaefer, E.J.; Wilson, P.W.; D'Agostino, R.; Ordovas, J.M.; Espino, A.; Au, R.; White, R.F.; Knoefel, J.E.; Cobb, J.L.; et al. Apolipoprotein E epsilon4 association with dementia in a population-based study: The Framingham study. *Neurology* **1996**, *46*, 673–677. [[CrossRef](#)]
9. Gomez-Tortosa, E.; Barquero, M.S.; Baron, M.; Sainz, M.J.; Manzano, S.; Payno, M.; Ros, R.; Almaraz, C.; Gomez-Garre, P.; Jimenez-Escrig, A. Variability of age at onset in siblings with familial Alzheimer disease. *Arch. Neurol.* **2007**, *64*, 1743–1748. [[CrossRef](#)]
10. Farrer, L.A.; Cupples, L.A.; Haines, J.L.; Hyman, B.; Kukull, W.A.; Mayeux, R.; Myers, R.H.; Pericak-Vance, M.A.; Risch, N.; van Duijn, C.M. Effects of age, sex, and ethnicity on the association between apolipoprotein E genotype and Alzheimer disease: A meta-analysis. *JAMA* **1997**, *278*, 1349–1356. [[CrossRef](#)]
11. Corder, E.H.; Saunders, A.M.; Risch, N.J.; Strittmatter, W.J.; Schmechel, D.E.; Gaskell, P.C., Jr.; Rimmler, J.B.; Locke, P.A.; Conneally, P.M.; Schmechel, K.E.; et al. Protective effect of apolipoprotein E type 2 allele for late onset Alzheimer disease. *Nat. Genet.* **1994**, *7*, 180–184. [[CrossRef](#)] [[PubMed](#)]
12. Anstey, K.; Christensen, H. Education, activity, health, blood pressure and apolipoprotein E as predictors of cognitive change in old age: A review. *Gerontology* **2000**, *46*, 163–177. [[CrossRef](#)] [[PubMed](#)]
13. Caselli, R.J.; Dueck, A.C.; Osborne, D.; Sabbagh, M.N.; Connor, D.J.; Ahern, G.L.; Baxter, L.C.; Rapcsak, S.Z.; Shi, J.; Woodruff, B.K.; et al. Longitudinal modeling of age-related memory decline and the APOE epsilon4 effect. *New Engl. J. Med.* **2009**, *361*, 255–263. [[CrossRef](#)] [[PubMed](#)]
14. Craft, S.; Teri, L.; Edland, S.D.; Kukull, W.A.; Schellenberg, G.; McCormick, W.C.; Bowen, J.D.; Larson, E.B. Accelerated decline in apolipoprotein E-epsilon4 homozygotes with Alzheimer's disease. *Neurology* **1998**, *51*, 149–153. [[CrossRef](#)] [[PubMed](#)]
15. Mayeux, R.; Small, S.A.; Tang, M.; Tycko, B.; Stern, Y. Memory performance in healthy elderly without Alzheimer's disease: Effects of time and apolipoprotein-E. *Neurobiol. Aging* **2001**, *22*, 683–689. [[CrossRef](#)]
16. Van Gerven, P.W.; Van Boxtel, M.P.; Ausems, E.E.; Bekers, O.; Jolles, J. Do apolipoprotein E genotype and educational attainment predict the rate of cognitive decline in normal aging? A 12-year follow-up of the Maastricht Aging Study. *Neuropsychology* **2012**, *26*, 459–472. [[CrossRef](#)] [[PubMed](#)]
17. Beaudreau, S.A.; Kaci Fairchild, J.; Spira, A.P.; Lazzeroni, L.C.; O'Hara, R. Neuropsychiatric symptoms, apolipoprotein E gene, and risk of progression to cognitive impairment, no dementia and dementia: The Aging, Demographics, and Memory Study (ADAMS). *Int. J. Geriatr. Psychiatry* **2013**, *28*, 672–680. [[CrossRef](#)] [[PubMed](#)]
18. Jorm, A.F.; Mather, K.A.; Butterworth, P.; Anstey, K.J.; Christensen, H.; Eastal, S. APOE genotype and cognitive functioning in a large age-stratified population sample. *Neuropsychology* **2007**, *21*, 1–8. [[CrossRef](#)] [[PubMed](#)]
19. Kleiman, T.; Zdanys, K.; Black, B.; Rightmer, T.; Grey, M.; Garman, K.; Macavoy, M.; Gelernter, J.; van Dyck, C. Apolipoprotein E epsilon4 allele is unrelated to cognitive or functional decline in Alzheimer's disease: Retrospective and prospective analysis. *Dement. Geriatr. Cogn. Disord.* **2006**, *22*, 73–82. [[CrossRef](#)] [[PubMed](#)]
20. Deary, I.J.; Whiteman, M.C.; Pattie, A.; Starr, J.M.; Hayward, C.; Wright, A.F.; Carothers, A.; Whalley, L.J. Cognitive change and the APOE epsilon 4 allele. *Nature* **2002**, *418*, 932. [[CrossRef](#)] [[PubMed](#)]
21. Farlow, M.R.; He, Y.; Tekin, S.; Xu, J.; Lane, R.; Charles, H.C. Impact of APOE in mild cognitive impairment. *Neurology* **2004**, *63*, 1898–1901. [[CrossRef](#)] [[PubMed](#)]

22. Lemaitre, H.; Crivello, F.; Dufouil, C.; Grasiot, B.; Tzourio, C.; Alperovitch, A.; Mazoyer, B. No epsilon4 gene dose effect on hippocampal atrophy in a large MRI database of healthy elderly subjects. *Neuroimage* **2005**, *24*, 1205–1213. [[CrossRef](#)] [[PubMed](#)]
23. Crivello, F.; Lemaitre, H.; Dufouil, C.; Grasiot, B.; Delcroix, N.; Tzourio-Mazoyer, N.; Tzourio, C.; Mazoyer, B. Effects of ApoE-epsilon4 allele load and age on the rates of grey matter and hippocampal volumes loss in a longitudinal cohort of 1186 healthy elderly persons. *Neuroimage* **2010**, *53*, 1064–1069. [[CrossRef](#)]
24. Gureje, O.; Ogunniyi, A.; Baiyewu, O.; Price, B.; Unverzagt, F.W.; Evans, R.M.; Smith-Gamble, V.; Lane, K.A.; Gao, S.; Hall, K.S.; et al. APOE epsilon4 is not associated with Alzheimer's disease in elderly Nigerians. *Ann. Neurol.* **2006**, *59*, 182–185. [[CrossRef](#)] [[PubMed](#)]
25. Rassas, A.A.; Mrabet Khiari, H.; Hadj Fredj, S.; Sahnoun, S.; Batti, H.; Zakraoui, N.O.; Cherif, A.; Anane, N.; Ben Ali, N.; Messaoud, T.; et al. High APOE epsilon 4 allele frequencies associated with Alzheimer disease in a Tunisian population. *Neurol. Sci.* **2012**, *33*, 33–37. [[CrossRef](#)] [[PubMed](#)]
26. Tang, M.X.; Stern, Y.; Marder, K.; Bell, K.; Gurland, B.; Lantigua, R.; Andrews, H.; Feng, L.; Tycko, B.; Mayeux, R. The APOE-epsilon4 allele and the risk of Alzheimer disease among African Americans, whites, and Hispanics. *JAMA* **1998**, *279*, 751–755. [[CrossRef](#)] [[PubMed](#)]
27. Reitz, C.; Jun, G.; Naj, A.; Rajbhandary, R.; Vardarajan, B.N.; Wang, L.S.; Valladares, O.; Lin, C.F.; Larson, E.B.; Graff-Radford, N.R.; et al. Variants in the ATP-binding cassette transporter (ABCA7), apolipoprotein E 4, and the risk of late-onset Alzheimer disease in African Americans. *JAMA* **2013**, *309*, 1483–1492. [[CrossRef](#)]
28. Singh, P.P.; Singh, M.; Mastana, S.S. APOE distribution in world populations with new data from India and the UK. *Ann. Hum. Biol.* **2006**, *33*, 279–308. [[CrossRef](#)] [[PubMed](#)]
29. Eto, M.; Watanabe, K.; Ishii, K. A racial difference in apolipoprotein E allele frequencies between the Japanese and Caucasian populations. *Clin. Genet.* **1986**, *30*, 422–427. [[CrossRef](#)]
30. Hendrie, H.C.; Murrell, J.; Gao, S.; Unverzagt, F.W.; Ogunniyi, A.; Hall, K.S. International studies in dementia with particular emphasis on populations of African origin. *Alzheimer Dis. Assoc. Disord.* **2006**, *20*, S42–S46. [[CrossRef](#)]
31. Farrer, L.A.; Friedland, R.P.; Bowirrat, A.; Waraska, K.; Korczyn, A.; Baldwin, C.T. Genetic and environmental epidemiology of Alzheimer's disease in arabs residing in Israel. *J. Mol. Neurosci.* **2003**, *20*, 207–212. [[CrossRef](#)]
32. McKhann, G.; Drachman, D.; Folstein, M.; Katzman, R.; Price, D.; Stadlan, E.M. Clinical diagnosis of Alzheimer's disease: Report of the NINCDS-ADRDA Work Group under the auspices of Department of Health and Human Services Task Force on Alzheimer's Disease. *Neurology* **1984**, *34*, 939–944. [[CrossRef](#)] [[PubMed](#)]
33. Kim, Y.J.; Go, M.J.; Hu, C.; Hong, C.B.; Kim, Y.K.; Lee, J.Y.; Hwang, J.Y.; Oh, J.H.; Kim, D.J.; Kim, N.H.; et al. Large-scale genome-wide association studies in East Asians identify new genetic loci influencing metabolic traits. *Nat. Genet.* **2011**, *43*, 990–995. [[CrossRef](#)] [[PubMed](#)]
34. Kim, Y.; Han, B.G.; Ko, G.E.S.G. Cohort Profile: The Korean Genome and Epidemiology Study (KoGES) Consortium. *Int. J. Epidemiol.* **2017**, *46*, 1350. [[CrossRef](#)] [[PubMed](#)]
35. Jee, Y.H.; Lee, S.J.; Jung, K.J.; Jee, S.H. Alcohol Intake and Serum Glucose Levels from the Perspective of a Mendelian Randomization Design: The KCPS-II Biobank. *PLoS ONE* **2016**, *11*, e0162930. [[CrossRef](#)] [[PubMed](#)]
36. Jun, G.R.; Chung, J.; Mez, J.; Barber, R.; Beecham, G.W.; Bennett, D.A.; Buxbaum, J.D.; Byrd, G.S.; Carrasquillo, M.M.; Crane, P.K.; et al. Transethnic genome-wide scan identifies novel Alzheimer's disease loci. *Alzheimers Dement.* **2017**, *13*, 727–738. [[CrossRef](#)] [[PubMed](#)]
37. McCarthy, S.; Das, S.; Kretzschmar, W.; Delaneau, O.; Wood, A.R.; Teumer, A.; Kang, H.M.; Fuchsberger, C.; Danecek, P.; Sharp, K.; et al. A reference panel of 64,976 haplotypes for genotype imputation. *Nat. Genet.* **2016**, *48*, 1279–1283. [[CrossRef](#)] [[PubMed](#)]
38. Nagy, R.; Boutin, T.S.; Marten, J.; Huffman, J.E.; Kerr, S.M.; Campbell, A.; Evenden, L.; Gibson, J.; Amador, C.; Howard, D.M.; et al. Exploration of haplotype research consortium imputation for genome-wide association studies in 20,032 Generation Scotland participants. *Genome Med.* **2017**, *9*, 23. [[CrossRef](#)]
39. Surakka, I.; Sarin, A.P.; Ruotsalainen, S.E.; Durbin, R.; Salomaa, V.; Daly, M.; Palotie, A.; Ripatti, S. The rate of false polymorphisms introduced when imputing genotypes from global imputation panels. *BioRxiv* **2016**. [[CrossRef](#)]
40. Patterson, N.; Price, A.L.; Reich, D. Population structure and eigenanalysis. *PLoS Genet.* **2006**, *2*, e190. [[CrossRef](#)]

41. Price, A.L.; Patterson, N.J.; Plenge, R.M.; Weinblatt, M.E.; Shadick, N.A.; Reich, D. Principal components analysis corrects for stratification in genome-wide association studies. *Nat. Genet.* **2006**, *38*, 904–909. [[CrossRef](#)] [[PubMed](#)]
42. Viechtbauer, W. Conducting Meta-Analyses in R with the metafor Package. *J. Stat. Softw.* **2010**, *36*, 1–48. [[CrossRef](#)]
43. Zubenko, G.S.; Hughes, H.B.; Zubenko, W.N. D10S1423 Identifies a Susceptibility Locus for Alzheimer's Disease (AD7) in a Prospective, Longitudinal, Double-Blind Study of Asymptomatic Individuals: Results at 14 Years. *Am. J. Med Genet. Part B Neuropsychiatr. Genet.* **2010**, *153B*, 359–364. [[CrossRef](#)] [[PubMed](#)]
44. Fan, M.; Liu, B.; Zhou, Y.; Zhen, X.; Xu, C.; Jiang, T. Cortical thickness is associated with different apolipoprotein E genotypes in healthy elderly adults. *Neurosci. Lett.* **2010**, *479*, 332–336. [[CrossRef](#)] [[PubMed](#)]
45. Taylor, J.E.; Adler, R.J. Euler Characteristics for Gaussian Fields on Manifolds. *Ann. Probab.* **2003**, *31*, 533–563. [[CrossRef](#)]
46. Hickie, I.; Naismith, S.; Ward, P.B.; Turner, K.; Scott, E.; Mitchell, P.; Wilhelm, K.; Parker, G. Reduced hippocampal volumes and memory loss in patients with early- and late-onset depression. *Br. J. Psychiatry* **2005**, *186*, 197. [[CrossRef](#)]
47. Zierhut, K.C.; Graßmann, R.; Kaufmann, J.; Steiner, J.; Bogerts, B.; Schiltz, K. Hippocampal CA1 deformity is related to symptom severity and antipsychotic dosage in schizophrenia. *Brain* **2013**, *136*, 804–814. [[CrossRef](#)] [[PubMed](#)]
48. Fleisher, A.; Grundman, M.; Jack, C.R.; Petersen, R.C.; Taylor, C.; Kim, H.T.; Schiller, D.H.; Bagwell, V.; Sencakova, D.; Weiner, M.F.; et al. Sex, Apolipoprotein E  $\epsilon$ 4 status, and hippocampal volume in mild cognitive impairment. *Arch. Neurol.* **2005**, *62*, 953–957. [[CrossRef](#)]
49. Michaelson, D.M. APOE epsilon4: The most prevalent yet understudied risk factor for Alzheimer's disease. *Alzheimers Dement.* **2014**, *10*, 861–868. [[CrossRef](#)]
50. Tosto, G.; Fu, H.; Vardarajan, B.N.; Lee, J.H.; Cheng, R.; Reyes-Dumeyer, D.; Lantigua, R.; Medrano, M.; Jimenez-Velazquez, I.Z.; Elkind, M.S.; et al. F-box/LRR-repeat protein 7 is genetically associated with Alzheimer's disease. *Ann. Clin. Transl. Neurol.* **2015**, *2*, 810–820. [[CrossRef](#)]
51. Agarwal, R.; Tripathi, C.B. Association of apolipoprotein E genetic variation in Alzheimer's disease in Indian population: A meta-analysis. *Am. J. Alzheimers Dis. Other Dement.* **2014**, *29*, 575–582. [[CrossRef](#)] [[PubMed](#)]
52. Wu, P.; Li, H.L.; Liu, Z.J.; Tao, Q.Q.; Xu, M.; Guo, Q.H.; Hong, Z.; Sun, Y.M. Associations between apolipoprotein E gene polymorphisms and Alzheimer's disease risk in a large Chinese Han population. *Clin. Interv. Aging* **2015**, *10*, 371–378. [[CrossRef](#)] [[PubMed](#)]
53. Bowirrat, A.; Friedland, R.P.; Chapman, J.; Korczyn, A.D. The very high prevalence of AD in an Arab population is not explained by APOE epsilon4 allele frequency. *Neurology* **2000**, *55*, 731. [[CrossRef](#)] [[PubMed](#)]
54. Farrer, L.A. Intercontinental epidemiology of Alzheimer disease: A global approach to bad gene hunting. *JAMA* **2001**, *285*, 796–798. [[CrossRef](#)] [[PubMed](#)]
55. Bachman, D.L.; Green, R.C.; Benke, K.S.; Cupples, L.A.; Farrer, L.A.; Group, M.S. Comparison of Alzheimer's disease risk factors in white and African American families. *Neurology* **2003**, *60*, 1372–1374. [[CrossRef](#)] [[PubMed](#)]
56. Donix, M.; Burggren, A.C.; Suthana, N.A.; Siddarth, P.; Ekstrom, A.D.; Krupa, A.K.; Jones, M.; Rao, A.; Martin-Harris, L.; Ercoli, L.M.; et al. Longitudinal changes in medial temporal cortical thickness in normal subjects with the APOE-4 polymorphism. *Neuroimage* **2010**, *53*, 37–43. [[CrossRef](#)] [[PubMed](#)]
57. Thompson, W.K.; Hallmayer, J.; O'Hara, R.; Alzheimer's Disease Neuroimaging Initiative. Design considerations for characterizing psychiatric trajectories across the lifespan: Application to effects of APOE-epsilon4 on cerebral cortical thickness in Alzheimer's disease. *Am. J. Psychiatry* **2011**, *168*, 894–903. [[CrossRef](#)]
58. Foley, J.M.; Salat, D.H.; Stricker, N.H.; McGlinchey, R.E.; Milberg, W.P.; Grande, L.J.; Leritz, E.C. Glucose Dysregulation Interacts With APOE-4 to Potentiate Temporoparietal Cortical Thinning. *Am. J. Alzheimers Dis. Other Dement.* **2016**, *31*, 76–86. [[CrossRef](#)]
59. Lambert, J.C.; Pasquier, F.; Cotel, D.; Frigard, B.; Amouyel, P.; Chartier-Harlin, M.C. A new polymorphism in the APOE promoter associated with risk of developing Alzheimer's disease. *Hum. Mol. Genet.* **1998**, *7*, 533–540. [[CrossRef](#)]



60. Lambert, J.C.; Araria-Goumidi, L.; Myllykangas, L.; Ellis, C.; Wang, J.C.; Bullido, M.J.; Harris, J.M.; Artiga, M.J.; Hernandez, D.; Kwon, J.M.; et al. Contribution of APOE promoter polymorphisms to Alzheimer's disease risk. *Neurology* **2002**, *59*, 59–66. [[CrossRef](#)]
61. Bertram, L.; McQueen, M.B.; Mullin, K.; Blacker, D.; Tanzi, R.E. Systematic meta-analyses of Alzheimer disease genetic association studies: The AlzGene database. *Nat. Genet.* **2007**, *39*, 17–23. [[CrossRef](#)] [[PubMed](#)]
62. Lescai, F.; Chiamenti, A.M.; Codemo, A.; Pirazzini, C.; D'Agostino, G.; Ruaro, C.; Ghidoni, R.; Benussi, L.; Galimberti, D.; Esposito, F.; et al. An APOE haplotype associated with decreased epsilon4 expression increases the risk of late onset Alzheimer's disease. *J. Alzheimers Dis. JAD* **2011**, *24*, 235–245. [[CrossRef](#)] [[PubMed](#)]
63. Song, Y.Q.; Rogaeva, E.; Premkumar, S.; Brindle, N.; Kawarai, T.; Orlacchio, A.; Yu, G.; Levesque, G.; Nishimura, M.; Ikeda, M.; et al. Absence of association between Alzheimer disease and the –491 regulatory region polymorphism of APOE. *Neurosci. Lett.* **1998**, *250*, 189–192. [[CrossRef](#)]
64. Rebeck, G.W.; Cheung, B.S.; Growdon, W.B.; Deng, A.; Akuthota, P.; Locascio, J.; Greenberg, S.M.; Hyman, B.T. Lack of independent associations of apolipoprotein E promoter and intron 1 polymorphisms with Alzheimer's disease. *Neurosci. Lett.* **1999**, *272*, 155–158. [[CrossRef](#)]
65. Toji, H.; Maruyama, H.; Sasaki, K.; Nakamura, S.; Kawakami, H. Apolipoprotein E promoter polymorphism and sporadic Alzheimer's disease in a Japanese population. *Neurosci. Lett.* **1999**, *259*, 56–58. [[CrossRef](#)]
66. Wang, J.C.; Kwon, J.M.; Shah, P.; Morris, J.C.; Goate, A. Effect of APOE genotype and promoter polymorphism on risk of Alzheimer's disease. *Neurology* **2000**, *55*, 1644–1649. [[CrossRef](#)]
67. Zurutuza, L.; Verpillat, P.; Raux, G.; Hannequin, D.; Puel, M.; Belliard, S.; Michon, A.; Pothin, Y.; Camuzat, A.; Penet, C.; et al. APOE promoter polymorphisms do not confer independent risk for Alzheimer's disease in a French population. *Eur. J. Hum. Genet.* **2000**, *8*, 713–716. [[CrossRef](#)]
68. Xiao, H.; Gao, Y.; Liu, L.; Li, Y. Association between polymorphisms in the promoter region of the apolipoprotein E (APOE) gene and Alzheimer's disease: A meta-analysis. *EXCLI J.* **2017**, *16*, 921–938. [[CrossRef](#)]
69. Ma, C.; Zhang, Y.; Li, X.; Chen, Y.; Zhang, J.; Liu, Z.; Chen, K.; Zhang, Z. The TT allele of rs405509 synergizes with APOE epsilon4 in the impairment of cognition and its underlying default mode network in non-demented elderly. *Curr. Alzheimer Res.* **2016**, *13*, 708–717. [[CrossRef](#)]
70. Tycko, B.; Lee, J.H.; Ciappa, A.; Saxena, A.; Li, C.M.; Feng, L.; Arriaga, A.; Stern, Y.; Lantigua, R.; Shachter, N.; et al. APOE and APOC1 promoter polymorphisms and the risk of Alzheimer disease in African American and Caribbean Hispanic individuals. *Arch. Neurol.* **2004**, *61*, 1434–1439. [[CrossRef](#)]
71. Rantalainen, V.; Lahti, J.; Kajantie, E.; Tienari, P.; Eriksson, J.G.; Raikonen, K. APOE  $\epsilon$ 4, rs405509, and rs440446 promoter and intron-1 polymorphisms and dementia risk in a cohort of elderly Finns—Helsinki Birth Cohort Study. *Neurobiol. Aging* **2019**, *73*, 230.e235–230.e238. [[CrossRef](#)] [[PubMed](#)]
72. Xin, X.Y.; Ding, J.Q.; Chen, S.D. Apolipoprotein E Promoter Polymorphisms and Risk of Alzheimer's Disease: Evidence From Meta-Analysis. *J. Alzheimers Dis. JAD* **2010**, *19*, 1283–1294. [[CrossRef](#)] [[PubMed](#)]
73. Ma, C.; Zhang, Y.; Li, X.; Zhang, J.; Chen, K.; Liang, Y.; Chen, Y.; Liu, Z.; Zhang, Z. Is there a significant interaction effect between apolipoprotein E rs405509 T/T and  $\epsilon$ 4 genotypes on cognitive impairment and gray matter volume? *Eur. J. Neurol.* **2016**, *23*, 1415–1425. [[CrossRef](#)] [[PubMed](#)]
74. Chen, Y.; Li, P.; Gu, B.; Liu, Z.; Li, X.; Evans, A.C.; Gong, G.; Zhang, Z. The effects of an APOE promoter polymorphism on human cortical morphology during nondemented aging. *J. Neurosci.* **2015**, *35*, 1423–1431. [[CrossRef](#)] [[PubMed](#)]
75. Rasmussen, K.L.; Tybjaerg-Hansen, A.; Nordestgaard, B.G.; Frikke-Schmidt, R. Plasma levels of apolipoprotein E and risk of dementia in the general population. *Ann. Neurol.* **2015**, *77*, 301–311. [[CrossRef](#)] [[PubMed](#)]
76. Rasmussen, K.L.; Tybjaerg-Hansen, A.; Nordestgaard, B.G.; Frikke-Schmidt, R. Plasma apolipoprotein E levels and risk of dementia: A Mendelian randomization study of 106,562 individuals. *Alzheimers Dement.* **2018**, *14*, 71–80. [[CrossRef](#)] [[PubMed](#)]
77. Lambert, J.C.; Mann, D.; Richard, F.; Tian, J.; Shi, J.; Thaker, U.; Merrot, S.; Harris, J.; Frigard, B.; Iwatsubo, T.; et al. Is there a relation between APOE expression and brain amyloid load in Alzheimer's disease? *J. Neurol. Neurosurg. Psychiatry* **2005**, *76*, 928–933. [[CrossRef](#)] [[PubMed](#)]



78. Rezeli, M.; Zetterberg, H.; Blennow, K.; Brinkmalm, A.; Laurell, T.; Hansson, O.; Marko-Varga, G. Quantification of total apolipoprotein E and its specific isoforms in cerebrospinal fluid and blood in Alzheimer's disease and other neurodegenerative diseases. *EuPA Open Proteom.* **2015**, *8*, 137–143. [[CrossRef](#)]
79. Cruchaga, C.; Kauwe, J.S.; Nowotny, P.; Bales, K.; Pickering, E.H.; Mayo, K.; Bertelsen, S.; Hinrichs, A.; Alzheimer's Disease Neuroimaging Initiative; Fagan, A.M.; et al. Cerebrospinal fluid APOE levels: An endophenotype for genetic studies for Alzheimer's disease. *Hum. Mol. Genet.* **2012**, *21*, 4558–4571. [[CrossRef](#)]



© 2019 by the authors. Licensee MDPI, Basel, Switzerland. This article is an open access article distributed under the terms and conditions of the Creative Commons Attribution (CC BY) license (<http://creativecommons.org/licenses/by/4.0/>).