

This is a repository copy of *The relationship between pain, analgesics and survival in patients with advanced cancer; a secondary data analysis of the international European palliative care Cancer symptom study.*

White Rose Research Online URL for this paper:
<https://eprints.whiterose.ac.uk/155541/>

Version: Published Version

Article:

Boland, Jason W., Allgar, Victoria orcid.org/0000-0002-5228-2623, Boland, Elaine G. et al. (4 more authors) (2019) The relationship between pain, analgesics and survival in patients with advanced cancer; a secondary data analysis of the international European palliative care Cancer symptom study. *European journal of clinical pharmacology*. ISSN 1432-1041

<https://doi.org/10.1007/s00228-019-02801-2>

Reuse

This article is distributed under the terms of the Creative Commons Attribution (CC BY) licence. This licence allows you to distribute, remix, tweak, and build upon the work, even commercially, as long as you credit the authors for the original work. More information and the full terms of the licence here:
<https://creativecommons.org/licenses/>

Takedown

If you consider content in White Rose Research Online to be in breach of UK law, please notify us by emailing eprints@whiterose.ac.uk including the URL of the record and the reason for the withdrawal request.



The relationship between pain, analgesics and survival in patients with advanced cancer; a secondary data analysis of the international European palliative care Cancer symptom study.

Jason W Boland¹ · Victoria Allgar² · Elaine G Boland³ · Mike I Bennett⁴ · Stein Kaasa^{5,6,7} · Marianne Jensen Hjermstad^{5,6,7} · Miriam Johnson¹

Received: 13 August 2019 / Accepted: 18 November 2019
© The Author(s) 2019

Abstract

Purpose Opioids reduce cancer-related pain but an association with shorter survival is variably reported. Aim: To investigate the relationship between pain, analgesics, cancer and survival within the European Palliative Care Cancer Symptom (EPCCS) study to help inform clinical decision making.

Methods Secondary analysis of the international prospective, longitudinal EPCCS study which included 1739 adults with advanced, incurable cancer receiving palliative care. In this secondary analysis, for all participants with date of death or last follow up, a multilevel Weibull survival analysis examined whether pain, analgesics, and other relevant variables are associated with time to death.

Results Date of death or last follow-up was available for 1404 patients (mean age 65.7 [SD:12.3];men 50%). Secondary analysis of this group showed the mean survival from baseline was 46.5 (SD:1.5) weeks (95% CI:43.6–49.3). Pain was reported by 76%; 60% were taking opioids, 51% non-opioid analgesics and 24% co-analgesics. Opioid-use was associated with decreased survival in the multivariable model (HR = 1.59 (95% CI:1.38–1.84), $p < 0.001$). An exploratory subgroup analysis of those with C-reactive protein (CRP) measures ($n = 219$) indicated higher CRP was associated with poorer survival ($p = 0.001$). In this model, the strength of relationship between survival and opioid-use weakened ($p = 0.029$).

Conclusion Opioid-use and survival were associated; this relationship weakened in a small sensitivity-testing subgroup analysis adjusting for CRP. Thus, the observed relationship between survival and opioid-use may partly be due to tumour-related inflammation. Larger studies, measuring disease activity, are needed to confirm this finding to more accurately judge the benefits and risks of opioids in advanced progressive disease.

Keywords Neoplasms · Pain · Analgesics · Opioids · Survival

Electronic supplementary material The online version of this article (<https://doi.org/10.1007/s00228-019-02801-2>) contains supplementary material, which is available to authorized users.

✉ Jason W Boland
Jason.Boland@hyms.ac.uk

- ¹ Wolfson Centre for Palliative Care Research, Hull York Medical School, University of Hull, Hull, UK
- ² Hull York Medical School, University of York, York, UK
- ³ Hull University Teaching Hospitals NHS Trust, Cottingham, UK
- ⁴ University of Leeds, Leeds Institute of Health Sciences, School of Medicine, Leeds, UK
- ⁵ Regional Advisory Unit in Palliative Care, Department of Oncology, Oslo University Hospital, Oslo, Norway
- ⁶ European Palliative Care Research Centre (PRC), Oslo University Hospital and Institute of Clinical Medicine, Oslo, Norway
- ⁷ Department of Oncology, University of Oslo, Oslo, Norway

Introduction

Pain is common in patients with advanced cancer. [1] Pain might be associated with a poorer prognosis, but the evidence is mixed. [2–6] Opioids, used to reduce pain, [7] might reduce immunity and survival, which might limit their use and increase suffering. [8–13] A systematic review showed that, although findings from individual studies were variable, opioids tended not to affect survival in the last days to weeks of life, but there was a possible association with shorter survival with longer term opioid-use. [14] These were mostly poor quality studies where the effect of opioids on survival was not the primary outcome. [14] The findings of this systematic review are supported by subsequent publications. [13, 15–17] Retrospective studies in patients in the last weeks of life have shown no statistically significant effect of opioids on survival.

[15, 16] Prospective studies of patients with advanced cancer, in the last months of life, reported that patients taking opioids had a decreased survival compared to those not taking opioids. [13, 17] Thus, data to date report an association between opioids and survival in patients with advanced cancer only over months of administration.

Patients with aggressive or advanced disease are likely to have increased pain (triggering opioid prescribing) and shorter survival, confounding an independent association between opioids and survival. [6, 18–22] Symptomatic patients may also have worse Karnofsky Performance Status (KPS), (a measure of functional status), itself an independent predictor of survival. [4, 23–26] Long-term data exploring the association between pain, opioids and survival are limited, but it is vital to address this concern to more accurately judge the benefits and risks of opioids in advanced progressive disease. [8]

Aim

To investigate the relationship between pain, analgesic use and survival within the European Palliative Care Cancer Symptom (EPCCS) study. Our null hypothesis was that there is no relationship between these variables and survival.

Methods

Study design

Secondary analysis of participants in the prospective, longitudinal EPCCS cohort study. [27] Site recruitment, sites and patient eligibility criteria have been published. [27] The first clinical assessment (baseline) was performed upon study inclusion. Subsequent follow-up, either at hospital or by mail were monthly \pm one week, for at least six months if possible.

Eligible participants were consenting adults (≥ 18 years) with advanced, incurable cancer enrolled in the centre's palliative care programme and able to comply with study procedures. Patients with severe cognitive impairment ($< 4/8$ on the four-item version of the Mini-Mental State Examination) and thought to be imminently dying by the clinical team were excluded.

Demographic data (age, sex) and clinical data (type and stage of cancer at diagnosis) was collected at baseline. The baseline demographics have been published previously. [27] Data collected at each visit can be seen in Supplementary Table 1.

A retrospective recording of date of death was performed in February 2014, around 6 months after the last patient was included. Details of these have been published. [27]

Statistical analyses

The characteristics of the patients are presented for the baseline assessment using mean (sd), minimum and maximum or n (%).

Survival was determined from the date of first assessment to the date of death or date of last follow-up. [28] To examine the association between pain, analgesics and time to death a multilevel Weibull survival analysis model was used. Multilevel models consider repeated observations to be 'nested' within participants and accommodate data in which the number and timing of observations vary among participants. Hazard ratios and 95% confidence intervals (CIs) are presented. Model fitting procedures were carried out using the `mestreg` command of STATA/SE-14. To account for individual heterogeneity, a random effect at the individual level was included. The statistical significance of each covariate was tested with a t-test (estimate/standard error). Statistical significance was tested on the univariable analysis for each covariate and multivariable models. Models 1–3 explored the relationship between pain scores and use of each type of analgesic medication (non-opioid analgesics, opioids, co-analgesics) and the association with survival, adjusted for age, sex, stage and KPS. The interaction of pain and each type of analgesic medication was also explored. The full model (Model 4) included all three types of analgesic medication (non-opioid analgesics, opioids, co-analgesics) and pain, adjusted for age, gender, stage of cancer and KPS. Model 5 included, in addition to the variables in Model 4, C-reactive protein (CRP), to explore the influence of systemic inflammation/disease activity on survival.

All analyses were undertaken on STATA SE (StataCorp.2015. Stata Statistical Software: Release-14. College Station, TX:StataCorp LP).

Ethics

Ethics approval was obtained at each EPCCS recruiting site. The study was performed according to the Declaration of Helsinki and was registered in the ClinicalTrials.gov database (No.NCT01362816). No further ethical approval was necessary for this secondary analysis of anonymised data [<http://www.hra.nhs.uk>].

Results

Patient characteristics

The original study included 1739 patients with baseline data (mean age 65.8 years (SD: 12.4) range 21–97; men

Table 1 Descriptive characteristics at baseline

		Total sample <i>n</i> = 1739	Date of death or last follow-up <i>n</i> = 1404
		Mean (sd) Min-Max (n) or n (%)	Mean (sd) Min-Max (n) or n (%)
Age		65.8 (12.4), 21–97 (1738)	65.7 (12.3), 23–97 (1403)
Sex	Female	871 (50%)	696 (50%)
	Male	866 (50%)	708 (50%)
	Missing	2	2
Stage	Metastatic/disseminated	1437 (84%)	1162 (84%)
	Local/locally advanced	284 (16%)	229 (16%)
	Missing	18	13
Cancer type	Cancer of the digestive organs	528 (31%)	443 (32%)
	Cancer of the respiratory organs	345 (20%)	292 (21%)
	Malignant bone tumours	8 (1%)	8 (1%)
	Skin cancer inc. malignant melanoma	37 (2%)	29 (2%)
	Malignant connective and soft tissue tumours	40 (2%)	32 (2%)
	Breast cancer	287 (17%)	212 (15%)
	Gynaecological cancer	103 (6%)	77 (6%)
	Cancer of the male genital organs	129 (8%)	99 (7%)
	Urinary cancer	79 (5%)	67 (5%)
	Tumours of the CNS	27 (2%)	25 (2%)
	Malignant endocrine tumours	11 (1%)	11 (1%)
	Secondary and ill-defined malignant tumours and unspecified sites	23 (1%)	20 (1%)
	Cancer of the head	61 (4%)	40 (3%)
	Leukaemia's and lymphomas	47 (3%)	39 (3%)
	Multiple primary cancers	2 (<1%)	2 (<1%)
	Missing	12	8
Non-opioid analgesics	Yes	808 (47%)	701 (51%)
	No	896 (53%)	678 (49%)
	Missing	35	25
Opioids	Yes	1012 (59%)	826 (60%)
	No	694 (41%)	554 (40%)
	Missing	33	24
Co-analgesics	Yes	410 (24%)	332 (24%)
	No	1279 (76%)	1033 (76%)
	Missing	50	39
Brief Pain Inventory (BPI); Average pain in the last 24 h	No pain	434 (26%)	330 (24%)
	Mild	563 (33%)	459 (34%)
	Moderate	451 (26%)	378 (28%)
	Severe	250 (15%)	197 (14%)
	Missing	41	40
Edmonton Classification System for Cancer Pain (ECS-CP); Mechanism of Pain	No pain	481 (28%)	381 (28%)
	Any nociceptive combination of visceral and/or bone or soft tissue pain	868 (51%)	712 (52%)
	Neuropathic pain syndrome with or without any combination of nociceptive pain	326 (19%)	256 (19%)
	Neuropathic pain syndrome with or without any combination of nociceptive pain	24 (2%)	22 (2%)
	Insufficient information to classify	37	33
Missing			
Karnofsky Performance Status (KPS)		67.0 (16.5) 10–100 (1724)	66.8 (16.3) 10–100 (1364)
C-reactive protein (CRP) (subgroup <i>n</i> = 240)		55.0 (72.7), 0–379 (240)	58.5 (74.4), 1–379 (219)

50%). The baseline characteristics are shown in Table 1. During the study, 1090 patients died (date of death missing for 25) and 339 were alive at the last follow-up. Information about vital status was missing for 310 patients, hence there are 1404 with a date of death or last follow-up date for the remaining analysis. Table 1 shows this group was comparable to the total sample on the key characteristics.

Severity of pain and analgesic use

Baseline

Pain was reported by 76% (Table 1). Table 2 shows that 60% of patients were taking opioids, 51% were taking non-opioid analgesics and 24% co-analgesics. There was a statistically significant association between the presence of pain and each

Table 2 Brief Pain Inventory (BPI): Average pain in the last 24 h by type of analgesic medication at baseline

BPI: Average pain in the last 24 h	Non-opioid analgesics*		Opioids*		Co-analgesics*	
	Yes	No	Yes	No	Yes	No
	683 (51%)	658 (49%)	800 (60%)	542 (40%)	322 (24%)	1006 (76%)
No pain	95 (29%)	229 (71%)	87 (27%)	235 (73%)	32 (10%)	291 (90%)
Mild	235 (52%)	218 (48%)	278 (61%)	176 (39%)	112 (25%)	336 (75%)
Moderate	220 (60%)	149 (40%)	274 (74%)	97 (26%)	114 (31%)	251 (69%)
Severe	133 (68%)	62 (32%)	161 (83%)	34 (17%)	64 (33%)	128 (67%)

*Statistically significant ($p < 0.001$) difference between BPI: Average pain in the last 24 h and patients taking each type of analgesic medication at baseline

type of analgesic medication (Table 2). Patients were more likely to take analgesic medications with a more severe pain intensity ($p < 0.001$).

The relationship between pain, analgesic use and survival

The mean survival from baseline was 46.5 (1.5) weeks (95% CI:43.6–49.3). From the last assessment, the mean survival was 38.8 (1.5) weeks (95% CI:35.9–41.8).

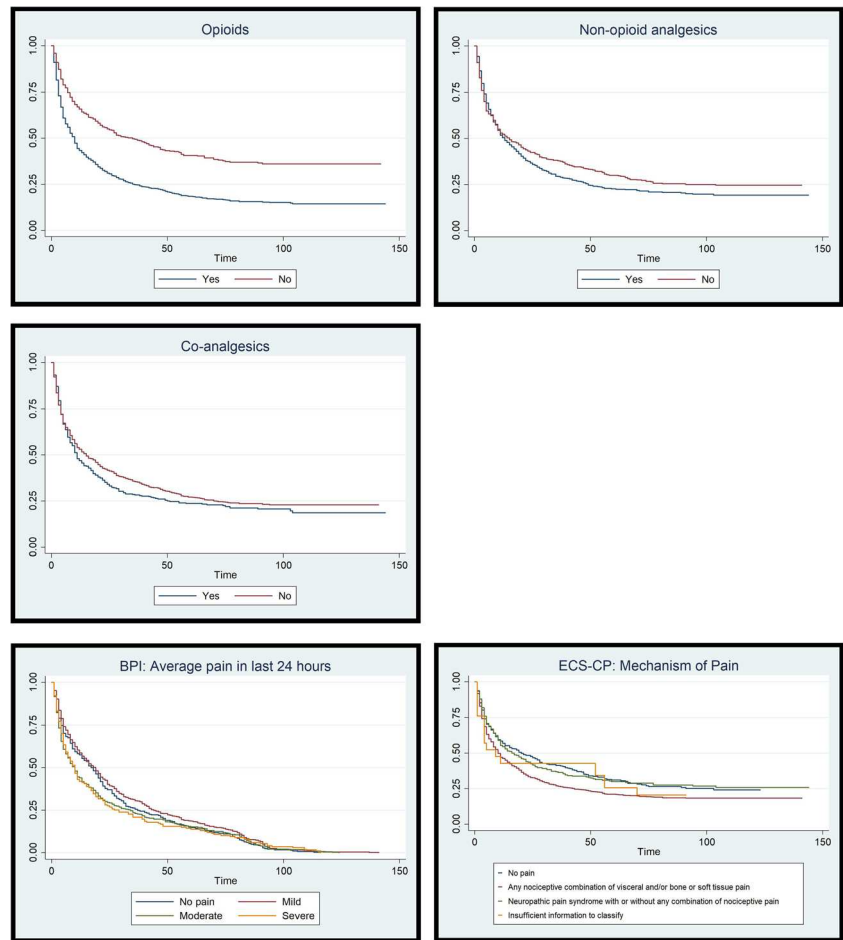
Table 3 shows the univariable analysis. Increasing age, male gender and a higher KPS were associated with a decrease in the hazard of death ($p < 0.001$).

There was a higher hazard of death, associated with moderate (1.24 (1.07, 1.45), $p = 0.004$) or severe (1.28 (1.05, 1.55), $p = 0.013$) pain, compared to no pain. For specific pain classifications, compared with no pain, those with nociceptive pain had an increased hazard of death (1.21 (1.06, 1.38), $p = 0.005$), but this relationship was not seen in those with neuropathic pain, either alone or in combination with nociceptive pain ($p = 0.224$). Opioid (1.88 (1.64, 2.17), $p < 0.001$) and co-analgesic use (1.22 (1.05, 1.41), $p = 0.007$) were associated with a higher hazard of death; non-opioid analgesic use ($p = 0.142$) was not. The survival curves for each type of analgesic medication, pain severity and pain mechanism illustrate these findings (Fig. 1).

Table 3 Univariable analysis for covariates and survival

Covariate	Univariable	
	Hazard (95% CI)	<i>p</i> value
Age	1.03 (1.02, 1.04)	<0.001
Gender (Male)	1.96 (1.60, 2.40)	<0.001
Stage of disease		
Local/locally advanced	1.00	
Metastatic/disseminated	1.03 (0.82, 1.30)	0.790
Non-opioid analgesics (Yes)	1.09 (0.97, 1.23)	0.142
Opioids (Yes)	1.88 (1.64, 2.17)	<0.001
Co-analgesics (Yes)	1.22 (1.05, 1.41)	0.007
Brief Pain Inventory (BPI); Average pain in the last 24 h		
No pain		
Mild	1.00	
Moderate	1.08 (0.94, 1.24)	0.264
Severe	1.24 (1.07, 1.45)	0.004
	1.28 (1.05, 1.55)	0.013
Edmonton Classification System for Cancer Pain (ECS-CP): Mechanism of Pain		
No pain	1.00	
Any nociceptive combination of visceral and/or bone or soft tissue pain	1.21 (1.06, 1.38)	0.005
Neuropathic pain syndrome with or without any combination of nociceptive pain	1.11 (0.93, 1.34)	0.224
Insufficient information to classify	1.14 (0.77, 1.70)	0.513
Karnofsky Performance Status (KPS)	0.961 (0.957, 0.964)	<0.001

Fig. 1 Survival curves (days) for use of each type of analgesic medication (non-opioid analgesics, opioids, co-analgesics), average severity of pain in the last 24 h Brief Pain Inventory (BPI) and pain mechanism (p-values are presented in Table 3)



To explore the relationship with pain, analgesics and survival, multivariable models were undertaken for each analgesic group and BPI pain and the interaction (models 1–3; Table 4), adjusted for age and gender, stage of cancer and KPS. As there was a strong association with BPI pain ($p < 0.001$), Edmonton Classification System for Cancer Pain (ECS-CP): Mechanism of pain was excluded in the models and BPI average pain in the last 24 h was used as the key variable for pain measurement.

Model 1 (Table 4) shows that opioid-use was statistically significant (HR = 1.74 (95% CI:1.38–2.21), $p < 0.001$) and Model 2 shows that co-analgesics use was statistically significant (HR = 1.37 (95% CI:1.02–1.84), $p = 0.034$). Model 3 shows that non-opioid analgesics was not statistically significant ($p = 0.250$). In models 1–3, the interaction between pain and analgesic use was not statistically significant, so was not included in the full model (Model 4; Table 4). Model 4 included each type of analgesic medication and pain, adjusted for age, gender, stage of cancer and KPS. In this model, only opioid-use was associated with an increased hazard of death (HR = 1.59 (95% CI:1.38–1.84), $p < 0.001$).

C-reactive protein (CRP) was excluded from the main analysis above as data were only available at baseline in a small subgroup ($n = 219$; 16%) who had a date of death or last follow-up. An exploratory sensitivity analysis with a multivariable model including CRP (Table 4, Model 5) revealed CRP was statistically significantly related, with a higher hazard of death for a unit increase in CRP (Hazard ratio = 1.004 (95% CI:1.002–1.006), $p = 0.001$, Model 5). Only opioid-use remained statistically significant in this model, although the strength of relationship between decreased survival and opioid-use weakened (HR = 1.38 (95% CI:1.03–1.85), $p = 0.029$).

Discussion

Overall analysis of these secondary data from unselected adults with advanced, incurable cancer, treated in palliative care units, showed that the only independent association with poorer survival was opioids. Conclusions cannot be drawn regarding causality from these observational data and thus should be interpreted with caution. A subgroup

Table 4 Multivariable analysis (hazard ratio (95% CI)) to investigate hazard of death †

	Model 1: Opioid, pain and interaction	Model 2: Co-analgesic, pain and interaction	Model 3: Non-opioid, pain and interaction	Model 4: Each type of analgesic medication and pain	Model 5: Each type of analgesic medication, pain and CRP
Non-opioid analgesics (yes)			1.14 (0.91, 1.42)	1.06 (0.94, 1.19)	1.15 (0.90, 1.47)
Opioids (yes)	1.74 (1.38, 2.21)***			1.59 (1.38, 1.84)***	1.38 (1.03, 1.85)*
Co-analgesics (yes)		1.37 (1.02, 1.84)*		1.00 (0.86, 1.15)	0.88 (0.62, 1.24)
BPI average pain in the last 24 h					
No pain	1.00	1.00	1.00	1.00	1.00
Mild	1.05 (0.86, 1.27)	1.11 (0.95, 1.29)	1.06 (0.89, 1.27)	1.00 (0.87, 1.15)	0.88 (0.63, 1.20)
Moderate	1.17 (0.92, 1.48)	1.23 (1.04, 1.46)	1.23 (1.00, 1.51)	1.07 (0.92, 1.25)	0.96 (0.66, 1.28)
Severe	1.02 (0.67, 1.55)	1.26 (1.00, 1.59)	1.21 (0.91, 1.62)	1.05 (0.86, 1.28)	1.02 (0.64, 1.63)
Non-opioid x BPI					
Non-opioid (yes) *BPI (no pain)			1.00		
Non-opioid (yes) *BPI mild pain)			0.96 (0.74, 1.24)		
Non-opioid (yes) *BPI (moderate pain)			0.90 (0.68, 1.18)		
Non-opioid (yes) *BPI (severe pain)			0.91 (0.63, 1.31)		
Opioid x BPI					
Opioid (Yes) *BPI (no pain)	1.00				
Opioid (Yes) *BPI mild pain)	0.90 (0.69, 1.18)				
Opioid (Yes) *BPI (mod- erate pain)	0.87 (0.64, 1.19)				
Opioid (Yes) *BPI (severe pain)	0.99 (0.61, 1.60)				
Co-analgesics x BPI					
Co-analgesics (Yes) *BPI (no pain)		1.00			
Co-analgesics (Yes) *BPI mild pain)		0.78 (0.56, 1.08)			
Co-analgesics (Yes) *BPI (moderate pain)		0.77 (0.55, 1.09)			
Co-analgesics (Yes) *BPI (severe pain)		0.72 (0.47, 1.08)			
CRP					1.004 (1.002, 1.006)***

†All models adjusted for age, gender, stage and Karnofsky Performance Status (KPS), * $p < 0.05$, ** $p < 0.01$, *** $p < 0.001$

BPI Brief Pain Inventory, CRP C-reactive protein

analysis of those who had also had CRP measures showed that the strength of relationship with opioids reduced. This raises the hypothesis that the observed relationship between opioids and survival may be driven by both tumour-related factors (inflammatory response from disease activity) and treatment-related factors (opioids).

Effect of demographics on survival

There was an increased hazard of death (1.96 (1.60, 2.40) for males compared to females; breast cancer had better survival than all other cancers. This is consistent with published

literature. [29] This might be partly explained by some cancers in women being more amenable to treatment. [30] Older age was also associated with a shorter survival but the hazard ratio was marginal. Being older has been shown to correlate to decreased survival, but tumour site, type and stage of disease are also important. [4, 29–31] The relationship in our study might be weaker as they were a less well-mixed cancer population and mostly in the last year of life. Metastatic/disseminated disease was not statistically associated with a shorter survival but a higher hazard ratio was observed for metastatic/disseminated, again consistent with published literature. [4, 29, 31]

Effect of opioids and pain on survival

In the adjusted model, opioid-use was associated with an increased hazard of death; non-opioid, co-analgesics and severity of pain were not. Although this was adjusted for known variables (age, gender, stage of cancer and KPS), there are unknown confounders such as the pre-opioid pain score for patients on opioids at baseline, the clinical decision making, monitoring and compliance that surrounds opioid-use, opioid dose, type, or route of administration. The finding that opioid-use was associated with decreased survival in patients in the last months of life is supported by previous studies. [13, 17]

Pain severity and opioid-use were not related (Table 2); opioids reduce pain, so opioid-use might be a bystander effect. [6, 32] In the univariable model, moderate and severe pain were associated with a decreased survival (Table 3); however, in the multivariable model the effect of opioids on survival dominates (Table 4). Some previous studies have shown an association between higher pain scores and a poorer prognosis, but the evidence is mixed. [2–6] The lack of association between pain and survival in this analysis might be because although opioids are triggered by pain, their subsequent use reduces pain and so in themselves confound the relationship between pain and survival; opioids have taken over as proxy for disease progression. Clinically, increased pain triggers opioid-use, opioids in turn reduce pain, as opioid dose increases this potentially displaces any subsequent independent effect of pain and survival. It is still the underlying pain that dictates opioid-use (even though intensity is reduced), and it's the underlying disease that dictates pain. There are many causes of cancer-related pain, the physical aspect being modulated by psycho-social-spiritual factors. [1, 7, 33] Physical pain related to the cancer may be due to both extent and the characteristics of the tumour; an aggressive inflammatory tumour may be more painful. [18–22, 34]

There was an increased hazard of death for nociceptive pain (combined with visceral and/or bone or soft tissue pain) compared to no pain, but no increased hazard for neuropathic pain syndrome with or without any combination of nociceptive pain compared to no pain. However, numbers of patients with neuropathic pain might have been too small (19% vs 50% nociceptive pain) to detect an effect. Pain characterization was limited; one question from the ECS-CP on mechanism of pain on clinical assessment. [35] There are different causes for neuropathic pain in patients with cancer, some of these might not be associated with systemic inflammation and thus less impact on survival. [1]

Effect of CRP on survival

In the exploratory sensitivity analysis increasing CRP was associated with worse survival ($p < 0.001$) and the effect size for opioid was reduced. This suggests systemic inflammation

might be an important confounder in the opioid-survival relationship. The effect size for CRP was small with wide confidence intervals in keeping with an exploratory analysis with a small sample ($n = 219$). However, the findings are consistent with the literature observing a relationship between higher CRP and worse prognosis. [26, 36, 37] Advanced disease does not fully explain survival, but tumour activity might be more important. [18, 19] Increased tumour activity might be a driver for systemic inflammation which could be associated with a shorter survival and be painful. [18, 19] This exploratory analysis suggested that the opioid-survival relationship is likely modified by disease activity. This indicates that information on disease activity is needed in future studies.

Limitations

This study was not designed to assess the effect of opioids from initiation, with survival as the primary endpoint. [14] Multiple interacting factors influence survival such as tumour, type of analgesic medication and other treatment, or patient and clinician/service characteristics. Tumour related factors include the type, stage, location and aggressiveness of the cancer. There are insufficient numbers in this dataset to analyse by type and only a subgroup ($n = 219$) had CRP measurements. Patient characteristics include co-morbidities, the meaning of the pain, depression, coping, family, as well as compliance with medication. We have accounted for the variables for which we have sufficient data, but there are other confounders, which are either unknown, or for which the dataset is too small to support analysis. A larger prospective cohort is needed to address this limitation.

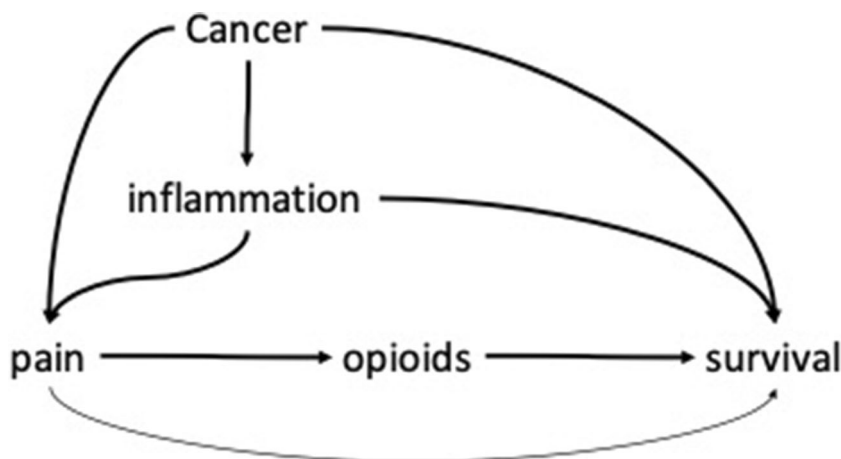
Although consecutive patients were recruited, those with cognitive impairment were excluded. There was limited information collected on analgesic medications. It is only known if patients were on opioids, non-opioid analgesics or co-analgesics. The opioid dose and type, doses or type of other analgesics, their titration, the clinical situation, monitoring, and how side effects were managed were not recorded. Thus, dose-response relationships could not be determined. Cancer pain is often mixed nociceptive, neuropathic and inflammatory, and clinical, radiological and neuroanatomical description to accurately determine the mechanism of pain was beyond the scope of this study. [35] There might be a predominant element but in the collected data nociceptive pain included visceral and/or bone or soft tissue pain and these might have neuropathic elements. Information about CRP was only on a small subgroup of patients, this limits the inferences that can be made about tumour activity and systemic inflammation.

Implications for clinical practice

This study raises a preliminary hypothesis that the observed association between opioids and survival may be partly driven

Fig. 2 Associations between cancer, inflammation, pain, opioids and survival

Pain is common in patients with advanced cancer, some of this is via inflammation caused by the immune response to cancer. [1] Opioids are prescribed for pain. [7] Survival is dependent on multiple factors, including the underlying cancer, the systemic inflammatory response and opioids. [8–12, 14, 18–22] Pain might also affect survival, [2–5] but this is offset by opioid-use in this analysis.



by tumour-related inflammation; causality cannot be attributed. In clinical practice, patients cannot be left in pain, it is thus important that patients who have cancer-related pain are given effective analgesia and monitored appropriately to minimize potential harm. Furthermore, epidemiological data from UK and Canada suggest that only 42–48% of patients that die from cancer receive an opioid, and median treatment duration is around 9 weeks. [38–40] These studies suggest that under-treatment with opioids rather than over-treatment might be the more important clinical challenge. Opioid-use is likely to reflect more aggressive painful disease and is thus a “biomarker” of a poor outcome, patients still need to be monitored carefully as they are likely to deteriorate due to their underlying cancer. Figure 2 shows the associations between cancer, inflammation, pain, opioids and survival.

Implications for research

Large prospective cohort studies with the effect of opioids on survival as a primary outcome, where pain is known before and after opioids have started, is needed to understand the relationship between opioids and survival further. Careful depiction of the clinical situation, opioid dose, titration, and monitoring for individual patients is needed to further understand the relationship of opioids with clinical outcomes. As this exploratory analysis indicates systemic inflammation related to tumour activity might be a driver for increased pain, it is recommended that inflammatory markers (including CRP) should be measured.

Conclusions

This secondary data analysis of the EPCCS data set of adults with advanced, incurable cancer, showed an association of opioid-use with decreased survival, although causality cannot be determined. With a sensitivity analysis of a subset with

CRP measures, the relationship with opioid-use reduced. Tumour-related systemic inflammation could be the independent variable explaining the observed relationship with opioids. Further prospective study is needed to test this hypothesis and accurately judge the effects of opioids, pain and tumour-related inflammation in patients with advanced progressive disease.

Acknowledgements

EPCCS description.

The European Palliative Care Cancer Symptom study (EPCCS) is a collaborative effort between the European Palliative Care Research Centre (PRC), and the European Association for Palliative Care – Research Network (EAPC-RN). EPCCS was partially funded by grant no. 6070 from the joint Research Council at Norwegian University of Science and Technology (NTNU) and St. Olavs Hospital-Trondheim University Hospital.

Project management:

Marianne J. Hjermstad PRC/NTNU; **Stein Kaasa**, PRC/NTNU/EAPC-RN; **Dagny F. Haugen**, PRC/NTNU; **Pål Klepstad** PRC/NTNU, and **Gunnhild Jakobsen** PRC/NTNU, Norway; **Augusto Caraceni**, PRC/EAPC-RN and **Cinzia Brunelli**, PRC/Italy; **Per Sjøgren**, EAPC-RN, Denmark; **Florian Strasser**, Switzerland; **Barry Laird**, PRC/UK.

Project steering committee.

Marianne J. Hjermstad PRC/NTNU and **Stein Kaasa**, PRC/NTNU/EAPC-RN, Norway; **Augusto Caraceni**, PRC/EAPC-RN and **Cinzia Brunelli**, PRC/Italy; **Per Sjøgren**, EAPC-RN, Denmark, **Luc Deliens** EAPC-RN, Belgium, **Mike Bennett**; EAPC-RN, UK; **David Currow**; Australia, **Vickie Baracos**, Canada.

Core Centre collaborators, one from each site **Erik Løhre**, St. Olavs Hospital-Trondheim University Hospital; **Nina Aass**, Oslo University Hospital; **Elisabeth Brenne**, Øya Helsehus; and **Inge Raknes**, Haraldsplass Deaconess Hospital; Norway; **Geana Kurita**, Rigshospitalet and **Mogens Groenvold**, Bispebjerg Hospital, Denmark; **Florian Strasser**, Cantonal Hospital St. Gallen, and **Cristian Camartin**, Kantonspital, Graubünden, Switzerland; **Alessandra Pigni**, Fondazione IRCCS Istituto Nazionale dei Tumori, **Luigi Cavanna**, Oncologia Medica Ospedale Di Piacenza; **Adriana Turriziani**, Hospice Villa Speranza Roma; **Franco Rizzi**, U.O. Complessa di Cure Palliative e Terapia del Dolore. AO ICP Milan; **Laura Piva**; Unità di Cure Palliative Azienda Ospedaliera San Paolo, Milan; **Giampiero Porzio**, Oncologia Medica Università degli Studi, L’Aquila; and **Rondini**

Ermanno, U.O. Oncologia Medica Arcispedale S. Maria Nuova–IRCCS, Reggio Emilia, Italy; **Mike Bennett**, Leeds Institute of Health Sciences/University of Leeds; **Barry Laird**, Western General Hospital Edinburgh/Beatson West of Scotland Cancer Centre; Edinburgh; **Andrew Wilcock**, Nottingham University Hospitals NHS Trust, Nottingham and **Karen Harvie**, Marie Curie Hospice, Glasgow, UK, **Maria Nabal**, Hospital Universitari Arnau de Vilanova Lleida, **Antonio N. Tejedor**, Hospital Centro de Cuidados Laguna, Madrid; **Josep Porta Sales**, Institut Català d’Oncologia, Barcelona; and **Marina Martínez**, Clinica Universidad De Navarra Pamplona; Spain; **Konrad Fassbender**, University of Alberta, Canada, **David Currow**, Flinders University, Australia; **Nikolay Yordanov**, Comprehensive Cancer Center Vratsa, Bulgaria; **Koen Pardon**, Ghent University Hospital Flanders, Belgium; **Ioseb Abesadze**, Cancer Prevention Center, Tblisi, Georgia **Madalena Feio**, Instituto Português de Oncologia Francisco Gentil Lisbon, Portugal.

Authors Contribution J.W.B.: Study design, interpretation of data, writing up of the first draft of the paper and article revision; V.A. Study design, data analysis, interpretation of data and article revision; E.B.: Study design, interpretation of data and article revision; M.I.B: Patient recruitment, data collection and article revision; S.K.: Study design of primary study, patient recruitment and data collection; M.H: Study design of primary study, patient recruitment and data collection; M.J: Study design, interpretation of data and article revision. All authors give final approval to this version of the manuscript to be published and agree to be accountable for it.

Compliance with ethical standards

Declaration of interests None of the authors declare any conflicts of interest.

Funding Central Norway Regional Health Authority (grant no. 46055100), The Cancer Foundation St Olavs Hospital, Norway, Trondheim University Hospital (grant no. 6070) and an unrestricted grant from the Helsinn group, Switzerland.

Open Access This article is licensed under a Creative Commons Attribution 4.0 International License, which permits use, sharing, adaptation, distribution and reproduction in any medium or format, as long as you give appropriate credit to the original author(s) and the source, provide a link to the Creative Commons licence, and indicate if changes were made. The images or other third party material in this article are included in the article's Creative Commons licence, unless indicated otherwise in a credit line to the material. If material is not included in the article's Creative Commons licence and your intended use is not permitted by statutory regulation or exceeds the permitted use, you will need to obtain permission directly from the copyright holder. To view a copy of this licence, visit <http://creativecommons.org/licenses/by/4.0/>.

References

- Bouhassira D, Luporsi E, Krakowski I (2017) Prevalence and incidence of chronic pain with or without neuropathic characteristics in patients with cancer. *Pain*. 158(6):1118–1125. <https://doi.org/10.1097/j.pain.0000000000000895>
- Smith D, Wilkie R, Uthman O, Jordan JL, McBeth J (2014) Chronic pain and mortality: a systematic review. *PLoS One* 9(6): e99048. <https://doi.org/10.1371/journal.pone.0099048>
- Halabi S, Vogelzang NJ, Kornblith AB, Ou SS, Kantoff PW, Dawson NA et al (2008) Pain predicts overall survival in men with metastatic castration-refractory prostate cancer. *J Clin Oncol* 26(15):2544–2549. <https://doi.org/10.1200/JCO.2007.15.0367>
- Fizazi K, Massard C, Smith M, Rader M, Brown J, Milecki P, Shore N, Oudard S, Karsh L, Carducci M, Damião R, Wang H, Ying W, Goessl C (2015) Bone-related parameters are the Main prognostic factors for overall survival in men with bone metastases from castration-resistant prostate Cancer. *Eur Urol* 68(1):42–50. <https://doi.org/10.1016/j.eururo.2014.10.001>
- Oudard S, Banu E, Medioni J, Scotte F, Banu A, Levy E, Wasserman J, Kacso G, Andrieu JM (2009) What is the real impact of bone pain on survival in patients with metastatic hormone-refractory prostate cancer treated with docetaxel? *BJU Int* 103(12):1641–1646. <https://doi.org/10.1111/j.1464-410X.2008.08283.x>
- Zylla D, Steele G, Gupta P (2017) A systematic review of the impact of pain on overall survival in patients with cancer. *Support Care Cancer* 25(5):1687–1698. <https://doi.org/10.1007/s00520-017-3614-y>
- Ahmedzai SH, Boland J (2007) Opioids for chronic pain: molecular and genomic basis of actions and adverse effects. *Curr Opin Support Palliat Care*. 1(2):117–125. <https://doi.org/10.1097/SPC.0b013e3282f04e0c>
- von Gunten CF (2016) The pendulum swings for opioid prescribing. *J Palliat Med* 19(4):348. <https://doi.org/10.1089/jpm.2016.0079>
- Boland JW, McWilliams K, Ahmedzai SH, Pockley AG (2014) Effects of opioids on immunologic parameters that are relevant to anti-tumour immune potential in patients with cancer: a systematic literature review. *Br J Cancer* 111(5):866–873. <https://doi.org/10.1038/bjc.2014.384>
- Boland JW, Pockley AG (2018) Influence of opioids on immune function in patients with cancer pain: from bench to bedside. *Br J Pharmacol* 175(14):2726–2736. <https://doi.org/10.1111/bph.13903>
- Chang WP, Lin CC (2015) Use of opioid analgesics or sleeping medication and survival of cancer patients. *Eur J Oncol Nurs* 19(3):199–206. <https://doi.org/10.1016/j.ejon.2014.11.007>
- Boland JW, Allgar V, Boland EG, Oviyasu O, Agar M, Currow DC, Johnson MJ (2017) Effect of opioids and benzodiazepines on clinical outcomes in patients receiving palliative care: an exploratory analysis. *J Palliat Med* 20(11):1274–1279. <https://doi.org/10.1089/jpm.2017.0129>
- Zylla D, Steele G, Shapiro A, Richter S, Gupta P (2018) Impact of opioid use on health care utilization and survival in patients with newly diagnosed stage IV malignancies. *Support Care Cancer* 26(7):2259–2266. <https://doi.org/10.1007/s00520-018-4062-z>
- Boland JW, Ziegler L, Boland EG, McDermid K, Bennett MI (2015) Is regular systemic opioid analgesia associated with shorter survival in adult patients with cancer? A systematic literature review. *Pain*. 156(11):2152–2163. <https://doi.org/10.1097/j.pain.0000000000000306>
- Minami S, Fujimoto K, Ogata Y, Yamamoto S, Komuta K (2015) Opioids have no negative effect on the survival time of patients with advanced lung cancer in an acute care hospital. *Support Care Cancer* 23(8):2245–2254. <https://doi.org/10.1007/s00520-014-2592-6>
- Sathornviriyapong A, Nagaviroj K, Anothaisintawee T (2016) The association between different opioid doses and the survival of advanced cancer patients receiving palliative care. *BMC Palliat Care* 15(1):95. <https://doi.org/10.1186/s12904-016-0169-5>
- Hasegawa T, Oguri T, Osawa T, Sawa T, Osaga S, Okuyama T, Uchida M, Maeno K, Fukuda S, Nishie H, Niimi A, Akechi T (2018) Opioid dose and survival of patients with incurable nonsmall cell lung Cancer: a prospective cohort study. *J Palliat Med* 21(10): 1436–1441. <https://doi.org/10.1089/jpm.2018.0044>

18. Roxburgh CS, McMillan DC (2014) Cancer and systemic inflammation: treat the tumour and treat the host. *Br J Cancer* 110(6): 1409–1412. <https://doi.org/10.1038/bjc.2014.90>
19. Laird BJ, McMillan DC, Fayers P, Fearon K, Kaasa S, Fallon MT, Klepstad P (2013) The systemic inflammatory response and its relationship to pain and other symptoms in advanced cancer. *Oncologist*. 18(9):1050–1055. <https://doi.org/10.1634/theoncologist.2013-0120>
20. Al-Mazidi S, Farhat K, Nedjadi T, Chaudhary A, Zin Al-Abdin O, Rabah D et al. Association of Interleukin-6 and Other Cytokines with Self-Reported Pain in Prostate Cancer Patients Receiving Chemotherapy. *Pain Med*. 2017;doi: <https://doi.org/10.1093/pm/pnx145>. [Epub ahead of print]. doi:<https://doi.org/10.1093/pm/pnx145>
21. Ji YB, Bo CL, Xue XJ, Weng EM, Gao GC, Dai BB, Ding KW, Xu CP (2017) Association of Inflammatory Cytokines with the symptom cluster of pain, fatigue, depression, and sleep disturbance in Chinese patients with Cancer. *J Pain Symptom Manag* 54(6):843–852. <https://doi.org/10.1016/j.jpainsymman.2017.05.003>
22. Laird BJ, Scott AC, Colvin LA, McKeon AL, Murray GD, Fearon KC, Fallon MT (2011) Cancer pain and its relationship to systemic inflammation: an exploratory study. *Pain*. 152(2):460–463. <https://doi.org/10.1016/j.pain.2010.10.035>
23. Evers PD, Logan JE, Sills V, Chin AI (2014) Karnofsky performance status predicts overall survival, cancer-specific survival, and progression-free survival following radical cystectomy for urothelial carcinoma. *World J Urol* 32(2):385–391. <https://doi.org/10.1007/s00345-013-1110-7>
24. Ouyang H, Ma W, Liu F, Yue Z, Fang M, Quan M, Pan Z (2017) Factors influencing survival of patients with pancreatic adenocarcinoma and synchronous liver metastases receiving palliative care. *Pancreatol*. 17(5):773–781. <https://doi.org/10.1016/j.pan.2017.07.002>
25. Chow E, Abdollell M, Panzarella T, Harris K, Bezjak A, Warde P, Tannock I (2008) Predictive model for survival in patients with advanced cancer. *J Clin Oncol* 26(36):5863–5869. <https://doi.org/10.1200/JCO.2008.17.1363>
26. Laird BJ, Kaasa S, McMillan DC, Fallon MT, Hjermstad MJ, Fayers P, Klepstad P (2013) Prognostic factors in patients with advanced cancer: a comparison of clinicopathological factors and the development of an inflammation-based prognostic system. *Clin Cancer Res* 19(19):5456–5464. <https://doi.org/10.1158/1078-0432.CCR-13-1066>
27. Hjermstad MJ, Aass N, Aielli F, Bennett M, Brunelli C, Caraceni A et al. Characteristics of the case mix, organisation and delivery in cancer palliative care: a challenge for good-quality research. *BMJ Support Palliat Care*. 2016;doi: <https://doi.org/10.1136/bmjspcare-2015-000997>. [Epub ahead of print]. doi:<https://doi.org/10.1136/bmjspcare-2015-000997>
28. Staplin ND, Kimber AC, Collett D, Roderick PJ (2015) Dependent censoring in piecewise exponential survival models. *Stat Methods Med Res* 24(3):325–341. <https://doi.org/10.1177/0962280214544018>
29. Ferrat E, Paillaud E, Laurent M, Le Thuaut A, Caillet P, Tournigand C et al (2015) Predictors of 1-year mortality in a prospective cohort of elderly patients with Cancer. *J Gerontol A Biol Sci Med Sci* 70(9):1148–1155. <https://doi.org/10.1093/gerona/glv025>
30. Quaresma M, Coleman MP, Rachet B (2015) 40-year trends in an index of survival for all cancers combined and survival adjusted for age and sex for each cancer in England and Wales, 1971–2011: a population-based study. *Lancet*. 385(9974):1206–1218. [https://doi.org/10.1016/S0140-6736\(14\)61396-9](https://doi.org/10.1016/S0140-6736(14)61396-9)
31. Ganly I, Nixon IJ, Wang LY, Palmer FL, Migliacci JC, Aniss A, Sywak M, Eskander AE, Freeman JL, Campbell MJ, Shen WT, Vaisman F, Momesso D, Corbo R, Vaisman M, Shaha A, Tuttle RM, Shah JP, Patel SG (2015) Survival from differentiated thyroid Cancer: what has age got to do with it? *Thyroid: official journal of the American Thyroid Association* 25(10):1106–1114. <https://doi.org/10.1089/thy.2015.0104>
32. Boland JW, Bennett MI (2016) Opioids do not influence metastasis in experimental animal cancer models. *Pain*. 157(5):1173. <https://doi.org/10.1097/j.pain.0000000000000463>
33. Ahmedzai SH, Boland J (2007) The total challenge of cancer pain in supportive and palliative care. *Curr Opin Support Palliat Care*. 1(1):3–5. <https://doi.org/10.1097/SPC.0b013e328151c401>
34. Brown MR, Ramirez JD (2015) Neuroimmune mechanisms in cancer pain. *Curr Opin Support Palliat Care* 9(2):103–111. <https://doi.org/10.1097/SPC.0000000000000140>
35. Boland EG, Mulvey MR, Bennett MI (2015) Classification of neuropathic pain in cancer patients. *Curr Opin Support Palliat Care*. 9(2):112–115. <https://doi.org/10.1097/SPC.0000000000000136>
36. Amano K, Maeda I, Morita T, Miura T, Inoue S, Ikenaga M et al (2016) Clinical implications of C-reactive protein as a prognostic marker in advanced Cancer patients in palliative care settings. *J Pain Symptom Manag* 51(5):860–867. <https://doi.org/10.1016/j.jpainsymman.2015.11.025>
37. Kim YJ, Kim SJ, Lee JK, Choi WS, Park JH, Kim HJ, Sim SH, Lee KW, Lee SH, Kim JH, Kim DW, Lee JS, Bang YJ, Heo DS (2014) Prediction of survival in terminally ill cancer patients at the time of terminal cancer diagnosis. *J Cancer Res Clin Oncol* 140(9):1567–1574. <https://doi.org/10.1007/s00432-014-1688-1>
38. Higginson IJ, Gao W (2012) Opioid prescribing for cancer pain during the last 3 months of life: associated factors and 9-year trends in a nationwide United Kingdom cohort study. *J Clin Oncol* 30(35): 4373–4379. <https://doi.org/10.1200/JCO.2012.42.0919>
39. Gagnon B, Scott S, Nadeau L, Lawlor PG (2015) Patterns of community-based opioid prescriptions in people dying of cancer. *J Pain Symptom Manag* 49(1):36–44 e1. <https://doi.org/10.1016/j.jpainsymman.2014.05.015>
40. Ziegler L, Mulvey M, Blenkinsopp A, Petty D, Bennett MI (2016) Opioid prescribing for patients with cancer in the last year of life: a longitudinal population cohort study. *Pain*. 157(11):2445–2451. <https://doi.org/10.1097/j.pain.0000000000000656>

Data Deposition Information Including Weblink Data from the study is deposited at: The Unit for Applied Clinical Research, Faculty of Medicine and Health Sciences Norwegian University of Science and Technology (NTNU), Trondheim, Norway. <https://www.ntnu.edu/mh/akf>

Publisher's note Springer Nature remains neutral with regard to jurisdictional claims in published maps and institutional affiliations.