



City Research Online

City, University of London Institutional Repository

Citation: Wang, Z., Li, Y., Zhang, T., Hu, J., Wang, Y., Wei, Y., Liu, T., Sun, T. ORCID: 0000-0003-3861-8933 and Grattan, K. T. V. ORCID: 0000-0003-2250-3832 (2020). A Sensitive and Reliable Carbon Monoxide Monitor for Safety-Focused Applications in Coal Mine Using a 2.33- μ m Laser Diode. *IEEE Sensors Journal*, 20(1), pp. 171-177. doi: 10.1109/jsen.2019.2942366

This is the accepted version of the paper.

This version of the publication may differ from the final published version.

Permanent repository link: <https://openaccess.city.ac.uk/id/eprint/23426/>

Link to published version: <http://dx.doi.org/10.1109/jsen.2019.2942366>

Copyright and reuse: City Research Online aims to make research outputs of City, University of London available to a wider audience. Copyright and Moral Rights remain with the author(s) and/or copyright holders. URLs from City Research Online may be freely distributed and linked to.

City Research Online:

<http://openaccess.city.ac.uk/>

publications@city.ac.uk

A Sensitive and Reliable Carbon Monoxide Monitor based on the Optimized Direct Absorption Spectroscopy Approach by using a 2.33 μm Laser Diode

Zhaowei Wang, Yanfang Li, Tingting Zhang, Jie Hu, Yin Wang, Yubin Wei, Tongyu Liu, Tong Sun and Kenneth T V Grattan

Abstract—In this paper, a stable and reliable CO monitoring system with high sensitivity (at sub-ppm level) was designed and demonstrated with particular reference to use in the mining industry, tailoring the design specifically for forecasting spontaneous combustion, a major hazard to miners. The design uses the familiar approach of direct absorption spectroscopy approach, but showing novelty in the tailoring of this approach to the mining industry, for use *in situ*. An appropriate strong CO absorption line is used to help eliminate the cross interferences expected from gases present in ambient air, with several preferred CO absorption lines selected and investigated, therefore choosing a distributed feedback (DFB) laser operating at a wavelength of 2330.18 nm as the excitation source. Through a detailed investigation, a minimum detection limit of ~ 0.2 ppm and a measurement precision (σ) of 6.3 ppb were achieved with a data updating rate of 6.6 s/point. Further in tests for the mining industry, a long-term continuous monitoring evaluation was carried out, demonstrated the excellent stability and reliability of the CO monitoring system. The results obtained have validated the potential of this design of a CO monitoring system for practical monitoring applications underground to enhance safety in the mining industry.

Index Terms—carbon monoxide, mining industry, direct absorption spectroscopy, TDLAS

The authors gratefully acknowledge the support by the National Key Research and Development Program of China (2017YFC0804403), Natural Science Foundation of Shandong Province (ZR2016QZ006) and Young Fund Project of Shandong Academy of Sciences (2018QN0011). The support of the Royal Academy of Engineering and the George Daniels Educational Trust is greatly appreciated.

Zhaowei Wang, Yanfang Li, Tingting Zhang, Yin Wang, Yubin Wei and Tongyu Liu are with the Shandong Key Laboratory of Optical Fiber Sensor and Laser Institute, Qilu University of Technology (Shandong Academy of Sciences), Jinan, 250102 China (e-mail: zhaowei.wang@sdlaser.cn; yanfang.li@sdlaser.cn; tingting.zhang@sdlaser.cn; yin.wang@sdlaser.cn; yubin.wei@sdlaser.cn; tongyu.liu@vip.iss-ms.com).

Jie Hu is with Shandong Micro-Sensor Photonics Limited, Jinan, 250103 China (email: jie.hu@iss-ms.com)

Tong Sun and Kenneth T V Grattan are with the School of Mathematics, Computer Science and Engineering, City, University of London, London, EC1V 0HB UK (e-mail: t.sun@city.ac.uk; k.t.v.grattan@city.ac.uk).

I. INTRODUCTION

AS a colorless and odorless gas, carbon monoxide (CO) is rightly called the “silent killer” owing to its strong affinity for hemoglobin and even short-term exposure of humans to CO gas at high levels may result in irreversible brain damage [1]. Further, high levels of CO gas present in ambient air is very dangerous since it can burn and even explode, when the concentration ranges from 12.5% to 74.5%. Therefore, creating an effective CO monitor is important to be available for industrial process analysis and environmental pollution and human monitoring [2]-[5], especially for a range of practical safety-focused monitoring applications, such as forecasting spontaneous combustion in the mine goaf areas [6], [7]. Typical monitored concentrations of CO present to suit these applications range from 1 part per million (ppm) by volume in ambient air to 1000 ppm levels for industrial monitoring. Hence, there is a significant demand for an *in-situ* and cost-efficient CO monitoring system that demonstrates ultra-high sensitivity, long-term stability and reliability and is tailored for use in mines, to reduce hazards to miners.

Compared with other non-optical methods for gas detection, tunable diode laser absorption spectroscopy (TDLAS) technology is known to show real advantages and potential for real time monitoring, offering high selectivity and sensitivity, long-term stability and excellent reliability [8]-[10]. The principles of TDLAS-based CO sensors have been demonstrated by different groups, for example using a single mode distributed feedback (DFB) laser in the near-infrared region [11], [12], an interband cascade laser (ICL), or a quantum cascade laser (QCL) in the mid-infrared (MIR) spectral region [13]-[16]. Zhang *et al.* have developed a fiber-based CO sensor with a 1.56 μm DFB laser applied to the TDLAS method, achieving a detection limit of 5 ppm. Because of the advantage of intrinsic safety that it offers, such a sensor scheme has already been successfully applied in the field of coal mine safety [12]. In 2017, Ghorbani *et al.* presented a compact MIR CO sensor with a detection limit of 9 ± 5 ppb by employing a room-temperature (RT) ICL emitting at 4.69 μm and a circular multi-pass gas cell (MGC) with a 4-m optical length [13]. In 2018, Dang *et al.* demonstrated a CO sensor by

the use of a RT continuous wave (CW) DFB QCL, operating at 4.76 μm and a 1.6-m mini MGC [16]. A minimum detection limit of 26 ppb was obtained with a 1 s acquisition time. Moving forward in this work from those developments and recognizing that ultra-sensitivity CO sensors have been reported, a CO sensor using a laser diode emitting at 2.3 μm can also provide highly sensitive detection, taking advantage of the stronger absorption of the CO first overtone band. Importantly, it can avoid the disadvantage that the very high cost that some MIR laser sources brings. Thus these 2.3 μm sources make possible the design of monitoring systems suited to a wide range of practical applications and especially for mine safety, the focus of this work, where the low cost can ensure wider use.

Such a sensor, employing a 2.3 μm laser diode, has attracted significant attention in recent years and a number of CO sensors have been reported and applied across a diverse group of industries [17]-[20]. Examples include a compact and calibration-free CO sensor with an in-line reference cell [21], a real-time *in-situ* CO sensor in a pulverized-coal-fired power plant [22], a ppm-level CO sensor for application to early fire detection [23] and a sensitive CO sensor used for SF₆ decomposition analysis in an electrical power system [24]. Among these methods, the technique of $2f$ wavelength modulation spectroscopy (WMS) was adopted in the reported CO sensors. However, as a spectroscopic method for gas detection, a further commonly used technique for TDLAS is termed direct absorption spectroscopy (or line scanning), which allows for a more reliable sensor, with a simple and compact system structure to be designed. Normally, direct absorption spectroscopy shows a worse detection sensitivity by two orders of magnitude than that of WMS. However, the detection sensitivity can be greatly improved by using fast-scanning direct absorption spectroscopy, accompanied by use of a signal averaging process.

In this paper, a stable, reliable and sensitive (sub-ppm range) CO monitoring system has been demonstrated, improving on previously reported designs and targeted on forecasting spontaneous combustion in the mining industry, by using the optimized direct absorption spectroscopy approach.

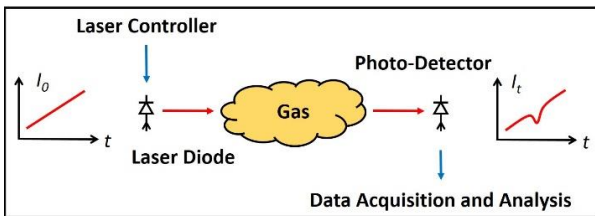


Fig. 1. Schematic diagram of the operation of a direct absorption optical sensor.

In optimizing this design, the CO absorption lines preferred to eliminate the cross interference from CO₂ and H₂O in ambient air were firstly investigated. A DFB laser operating at a specific wavelength of 2330.18 nm and a 20-m MGC were employed to target the strong absorption line of the CO first overtone band and to increase the effective optical length, respectively. After a careful investigation of the system performance, a minimum detection limit of ~ 0.2 ppm and a measurement precision (σ) of 6.3 ppb were achieved, with a data updating rate of 6.6 s/point. This design was evaluated using long-term continuous

monitoring, to demonstrate the excellent reliability and stability of the CO monitoring system that has been developed.

II. DETECTION METHODOLOGY

A. Direct Absorption Spectroscopy

Figure 1 shows the schematic diagram of the approach chosen for a direct absorption based optical sensor for mining applications. By ramping up the laser diode injection current, the emitting laser wavelength can be tuned in a way that is approximately linear. The intensity decreases when the laser light is passed through the gas sample investigated and as a result, the small dip in the background line monitored creates the absorption signal due to the presence of the explosive gas. According to the Lambert-Beer law, the gas concentration can be deduced using the following formula [25]:

$$C = \frac{\ln(I(\lambda)/I_0(\lambda))}{\alpha(\lambda)L} \quad (1)$$

$$\alpha(\lambda) = S(T)P\psi(\lambda) \quad (2)$$

where C is the volume concentration of the gas sample, λ is the laser wavelength, L is the length of the optical path, $I_0(\lambda)$ is the initial light intensity, $I(\lambda)$ is the transmitted light intensity due to the absorption, $\alpha(\lambda)$ is the absorption coefficient, P is the total pressure of the gas medium, $\Psi(\lambda)$ is the spectral line shape and $S(T)$ is the intensity of the characteristic spectral lines, which show a temperature dependence.

B. Preferred CO Absorption Line

Among the group of reported CO sensors, the use of laser diodes operating around 1.6 μm , 2.3 μm and MIR laser sources (QCL or ICL) near 4.6 μm have most frequently been employed to allow the emission to correspond to the CO absorption band of the weaker second overtone band, first overtone band and the strongest fundamental vibration band, respectively. The performance of these TDLAS-based sensors is strongly dependent on the strength of the gas absorption line. Thus, the selected laser sources must target the most suitable CO absorption line, ideally one with a high cross-section to enhance the sensitivity of sensor. Arising from their stronger absorption bands and yet being cost-effective to use, commercially available laser sources emitting around 2.33 μm are the preferred candidates to detect CO gas with a ppm-level sensitivity, ideal for the mining applications under consideration.

At the same time, it is equally important to eliminate the effect of cross interferences that may be seen from gases present in the ambient air. The potential for such cross interference effects mainly originates from the presence of different hydrocarbon gases, arising from their absorption bands overlapping with those of CO in the infrared spectral region. For a CO monitoring system, the spectral interference effects seen from both CO₂ and H₂O are the major challenges in ambient air, the consequence of which is to reduce the reliability of many monitoring systems in this application. In addition, methane (CH₄) is also an important interfering gas,

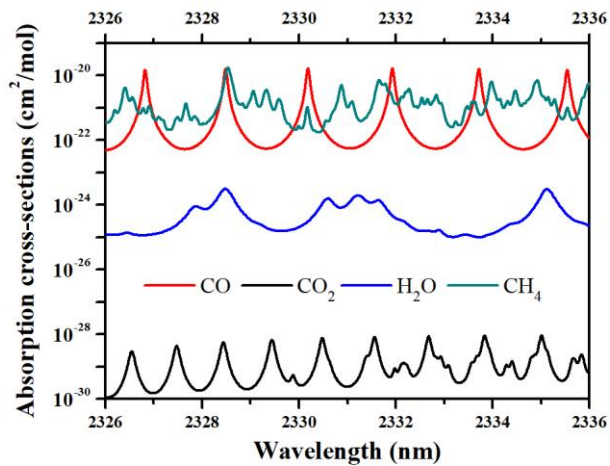


Fig. 2. The absorption cross-sections of CO, CO₂, H₂O and CH₄ at wavelength around 2.33 μ m.

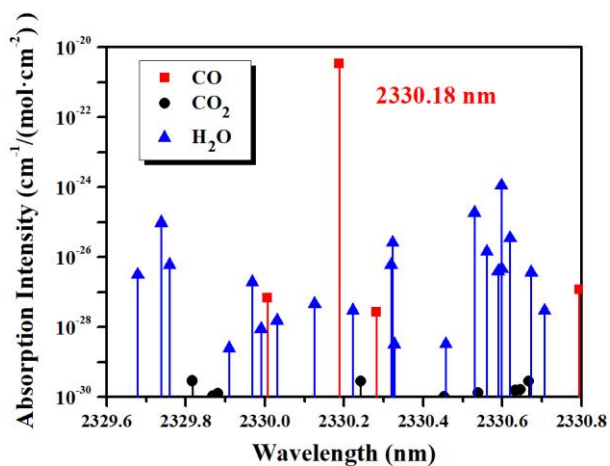


Fig. 3. Illustration of key absorption lines of CO, CO₂, and H₂O near 2.33 μ m.

besides CO₂ and H₂O, for the application in mining industry. Figure 2 shows the absorption cross-sections of CO, CO₂, H₂O and CH₄ over a wavelength range from 2326 nm to 2336 nm, based on the Hitran 2012 database [26], where it can be seen that the absorption cross-section of CO is greater than that of CO₂ by nine orders of magnitude, showing that almost no interference from any pure CO₂ gas that may be present is seen. The wavelength of 2328.5 nm cannot be used for sensitive CO detection under a high humidity environment, because there are only four orders of magnitude of difference between the CO and H₂O absorptions, as shown in Figure 2 and in many practical mining cases there may be high levels of water vapor present. The absorption peak of CO at 2333.7 nm is a good choice to avoid such cross-interference effects from both CO₂ and H₂O. The absorption peak of CH₄ at 2330.2 nm is the same wavelength as that of CO, and the absorption cross section of CH₄ is obviously weaker than that of CO at 2330.2 nm, which makes this wavelength a good choice for the simultaneous detection of CO and CH₄ gas for applications in coal mines.

Given the above, a wavelength of 2330.18 nm was adopted as the basis of developing the optimum design of a CO monitor in this evaluation, recognizing both the line intensity available and the problem of cross interference effects. Figure 3 depicts the absorption lines of CO, CO₂, and H₂O near a wavelength of 2330 nm. As shown, the intensity of CO absorption line at a wavelength of 2330.18 nm is $3.39 \times 10^{-21} \text{ cm}^{-1}/(\text{mol} \cdot \text{cm}^{-2})$ at

room temperature and at atmospheric pressure. This is obviously a stronger absorption than that of the CO₂ and H₂O lines, which is good. Therefore it forms a sound basis for the development of a highly sensitive and selective CO monitor, using a laser diode operating at 2330.18 nm.

III. EXPERIMENTAL INVESTIGATION

A. Monitoring System Structure

Figure 4 shows a schematic of the CO gas monitoring system developed in this work for coal mine use, it consisting of three major components: an optical assembly, the laser controller and a signal acquisition and analysis system. For ease of construction, both commercially available and specially designed components to create the innovative, tailored design of the whole system developed are used. In the optical assembly, a single-mode fiber pigtailed CW DFB laser

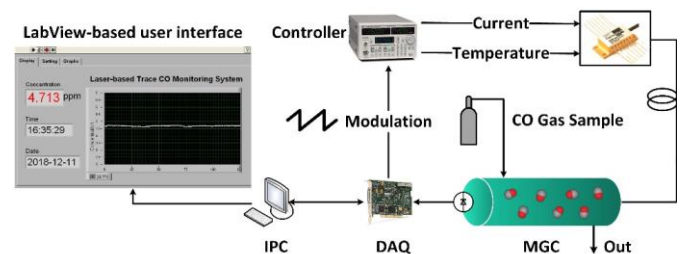


Fig. 4. Schematic of the CO gas monitoring system developed showing the major components. IPC: industrial personal computer, DAQ: data acquisition, MGC: multi-pass gas cell.

(Nanoplus GmbH) was employed as the excitation source, operating at a central wavelength of 2330 nm. The tuning coefficients of current and temperature were determined to be 0.02 nm/mA and 0.23 nm/ $^{\circ}$ C, respectively, enabling the fine control of the system that was required. The Herriott-type MGC has an effective optical length of 20 m, with dimensions of $314 \times 89 \times 104 \text{ mm}^3$ and a basic volume of 0.57 L. Both sides of the inside of the gas cell were dielectric coated, providing a broadband transmission over the wavelength range from 2290 nm to 2370 nm. The transmitted laser beams were detected by using the RT extended-InGaAs photo-detector installed within the system. Applying a stable current driver and temperature controller (Stanford Research Systems, LDC510) and using butterfly laser diode mounts, the DFB laser operated steadily at a temperature of 29.5 $^{\circ}$ C, generating an output power >2 mW. At the same time, the modulation of the laser wavelength was obtained using a sawtooth wave, over a current range from 60 mA to 90 mA. Following data acquisition (DAQ) and analog-to-digital conversion (National Instruments Corporation, PCI-6221), the detected signals were passed to the signal analysis system for further investigation.

B. LabVIEW-based Software

The absorption signals that were detected were processed using specially-developed LabVIEW-based programme. As depicted in Figure 4, the user interface for the CO monitoring system comprises three key parts: real-time data for the CO

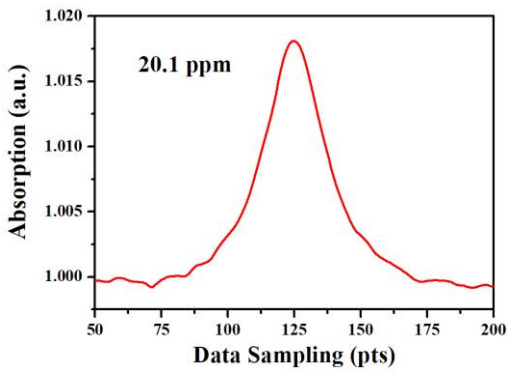


Fig. 5. Normalized signal obtained with a nominal CO gas at a concentration of 20.1 ppm.

concentration, the operating parameters of the system and the detected signals represented graphically. The system was designed to display to the user the key control parameters and the ‘run data’ from the CO detection, together with displaying the graphs showing the changes in the detected signals, the normalized signals, the nonlinear least-squares fitted curve and thus a real-time measured value of the detected CO concentration, such as would occur in the coal mine.

C. Data Processing Approach

In order to conduct real time *in-situ* detection of the concentration of the CO gas, the fast-scanned direct absorption spectroscopic approach, accompanied by use of an averaging process, was employed in the evaluation carried out. Initially the 2.3 μm laser diode was tuned using a 30 Hz sawtooth wave to scan repeatedly the laser wavelength around 2330.2 nm. A consecutive acquisition of 200 data points was carried out for each cycle of the spectrum. The top 50 data points of every spectrum acquired were discarded because of the strong fluctuations observed, this being due to the current jump seen in sawtooth wave. Following that, the spectra obtained were averaged successively and fitted by using a multi-order polynomial to allow for normalization of the averaged spectra. Finally, an algorithm giving nonlinear least-squares fitting was employed to remove random noise and reduce the potential etalon effect, and thus improve the signal-to-noise ratio (SNR) of system. In this work, a sample of CO gas at a nominal

concentration of 20.1 ppm (and typical of actual coal mines) was employed, creating the consequent normalized spectral signature, which is depicted in Figure 5.

IV. RESULTS AND DISCUSSIONS

A. Averaging Times of Spectra

The raw data updating rate of the CO monitor designed can be increased greatly with the use of a low averaging times for the spectra obtained. When the spectra were averaged successively 3 times, an updating rate for the data of ~ 0.1 s/point could be realized. However, the low averaging times of the spectra obtained will result in a larger level of data fluctuation and signal instability monitored, this being due to the white noise present. Therefore, the most suitable averaging times for the spectra were evaluated firstly, in that way to improve the stability of the CO monitoring. During the evaluation, the nominal 20.1 ppm CO gas was continuously filled into the MGC, at a flow rate of 1 L/min. The spectra obtained were averaged either 50, 100 and 200 times respectively. Figure 6 shows the corresponding CO concentration curves and the distribution histograms, each of which contain 100 raw data points. As depicted in Figure 6, the consequent frequent fluctuations in the CO concentration can be observed with the lowest averaging times used (50), which resulted in an apparently wider range of concentration distribution being determined. However, the frequency of the fluctuations observed decreased when using the 100 times averaging. Finally, when the 200 times averaging was used, the stability of the monitored CO signal improved significantly. A Gaussian profile was employed to fit the distribution histograms and as a result the *R*-square value, the half-width at half-maximum (HWHM) and the sigma value (σ) were calculated to be 0.9949, 14.8 ppb and 6.3 ppb, respectively. The result demonstrated the excellent stability and precision obtainable from the use of the CO monitoring system developed. Given that result, the 200 times averaging was employed in the rest of this work, corresponding to a data updating rate of 6.6 s/point.

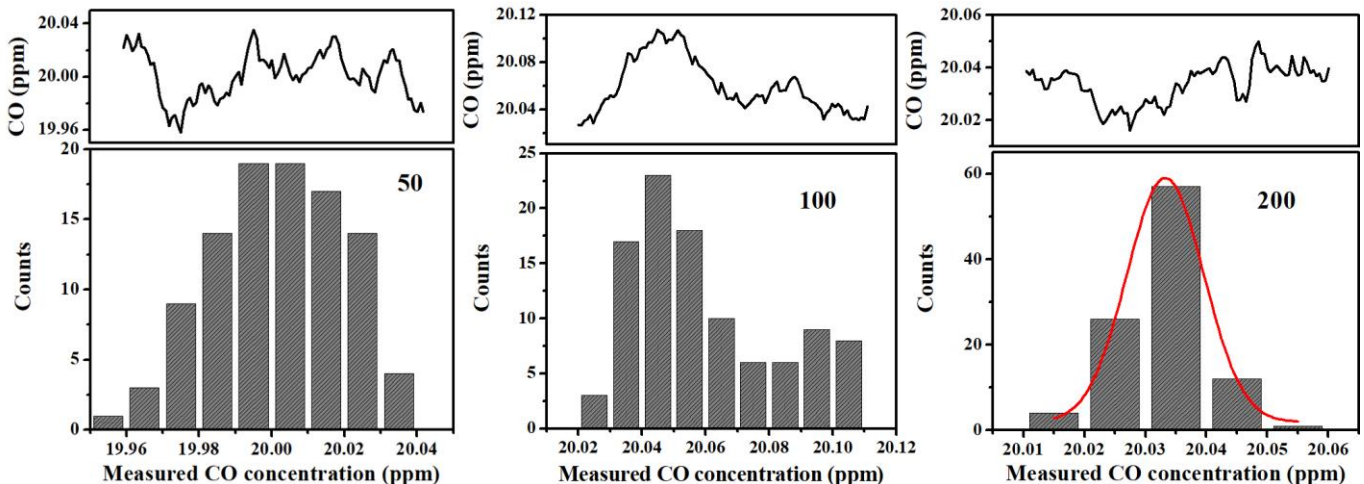


Fig. 6. The CO concentration curves (top) and the distribution histograms (bottom) with different spectral averaging times (left to right: 50, 100 and 200).

B. Performance of the CO Monitoring System

To evaluate further the performance of the CO monitoring system developed, the detection sensitivity and the linear

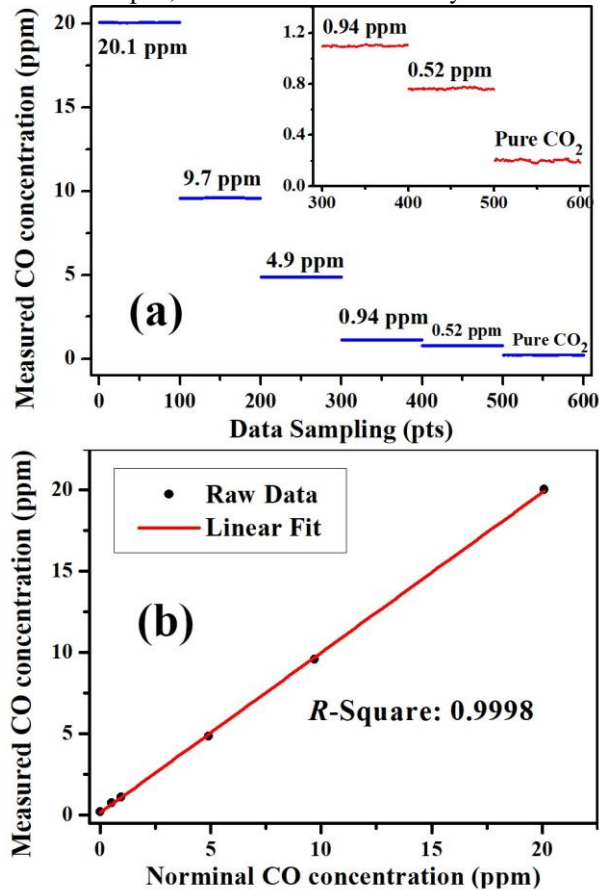


Fig. 7. (a): measured CO concentrations determined from the monitoring system developed, (b): graph of the measured CO concentration versus the nominal CO concentration used.

concentration response were evaluated in a series of experiments carried out. Various different CO gas samples at different nominal concentrations of 20.1 ppm, 9.7 ppm, 4.9 ppm, 0.94 ppm and 0.52 ppm were used, the samples being successively filled into the MGC (with a constant flow rate of 1 L/min). 100 sample points to monitor the CO concentration were recorded, for each concentration level and results are depicted in Figure 7(a). The CO monitoring system exhibited excellent detection sensitivity, precision and stability. As shown from the inset in Figure 7(a), the CO monitoring system could readily sense the presence of CO gas, at a concentration as low as 0.52 ppm, with excellent stability. Next the system was evaluated with pure CO₂ gas (99.999%), which was filled into the MGC to verify the real 'zero baseline' of the monitor. Given that such a CO₂ sample should produce no interference in the spectra recorded, the data monitored and depicted in Figure 7(a) can then be used to determine that the detection limit of system was below 0.2 ppm. The measured data were averaged for each concentration level and then plotted as a function of the nominal CO concentrations used, seen in Figure 7(b). The *R*-square value was calculated to be 0.9998 with a linear fitting analysis, which demonstrates the excellent linear concentration response of the monitoring system developed in

this work.

C. Long-Term Continuous Monitoring

Long-term stable and reliable operation of a CO sensor is of great significance for monitoring across a range of practical

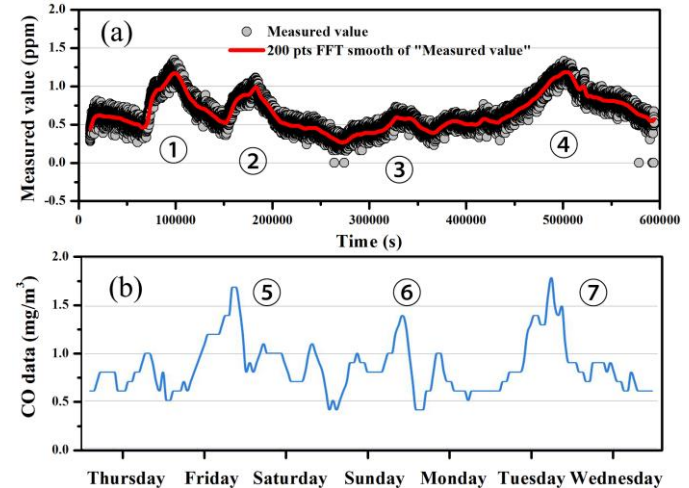


Fig. 8. The measured CO concentration determined (a) using the monitoring system developed, (b) compared with the official monitoring data from the detection system installed by the Jinan Government.

applications, especially for this application in mining industry. Thus in order to test the stability of the CO monitoring system developed, the system was installed and operated continuously for just over a week. Figure 8(a) shows the data recorded over ~170 hours of use, in an ambient atmosphere. The raw data were processed using the 200 pts FFT smoothing method, in order to reveal the key trends more clearly. The results show that there are four peaks, illustrated in Figure 8(a), which are labelled in sequence. Looking at these closely, the first peak (1) resulted from the leaking CO gas from another experiment being carried out in the same place. Three other peaks (labelled (2), (3), and (4)) reflect the actual fluctuations of the CO gas concentration in the ambient air. To demonstrate the high performance of the CO monitoring system developed, Figure 8 contrasts the results obtained from the monitor developed in this work with the official monitoring data for CO gas concentration, (from an official monitor installed by the Jinan government). As shown in the Figure 8, the three peaks, labelled (2), (3), and (4) are consistent with the peaks labelled (5), (6), and (7) which were obtained in the official monitoring exercise carried out over one week of operation and there is good agreement seen (except for the 'rogue peak' (1)). This result has clearly demonstrated the long-term stability and reliability of the monitoring system developed in this work for coal mining applications, showing the positive feature that there is no cross interference seen in the monitoring of the ambient air, simplicity of operation and affordable cost.

V. CONCLUSIONS

In summary, a reliable CO monitoring system with high sensitivity (sub-ppm level) and good long-term stability was

designed, developed and evaluated, using a 2.33 μm laser diode and employing the optimized direct absorption spectroscopy technique. Compared with the use of lasers at wavelengths of 1.6 μm and 4.6 μm , the commercially-available laser sources used, operating at 2.33 μm , are the preferred candidates for the effective detection of the CO gas, showing the advantage of being cost-effective to monitor the stronger absorption of the CO first overtone band. The use of fast-scanning direct absorption spectroscopy, accompanied by an optimized averaging process, has allowed the development of a sensor system that is relatively inexpensive, yet reliable and sensitive, having a simple and compact system structure and well suited to the needs of today's mining operations. In order to eliminate cross interference from other gases present in the ambient air and target a strong CO absorption feature, the selection of the most suitable CO absorption line was investigated in this work. As a result, a DFB laser operating at a specific wavelength of 2330.18 nm was determined to be the optimal excitation source to use. After a careful investigation of the system thus designed and constructed, its performance using the spectral data processing approach was evaluated and a minimum detection limit of ~ 0.2 ppm and a measurement precision (σ) of 6.3 ppb were achieved, (with a data updating rate of 6.6 s/point). Long-term continuous monitoring using the system has demonstrated its excellent stability and reliability for use in China's coal mines. A good comparison with 'official data' from a Government-approved monitoring system was obtained *in situ*, thereby validating such a CO monitoring system as a practical means of monitoring in mines and thus for forecasting situations where spontaneous combustion, hazardous to miners, could occur.

REFERENCES

- [1] N. Hill-Kapturczak, and A. Agarwal, "Carbon monoxide: from silent killer to potential remedy," *Am J Physiol Renal Physiol* **290**(4), F787 (2006).
- [2] Y. Zaatari, J. Bechara, A. Khoury, D. Zaouk, and J.-P. Charles, "Diode laser sensor for process control and environmental monitoring," *Applied Energy* **65**(1), 107-113 (2000).
- [3] J. Wang, M. Maiorov, J. B. Jeffries, D. Z. Garbuzov, J. C. Connolly, and R. K. Hanson, "A potential remote sensor of CO in vehicle exhausts using 2.3 μm diode lasers," *Measurement Science & Technology* **11**(11), 1576-1584 (2000).
- [4] X. Chao, J. B. Jeffries, and R. K. Hanson, "Absorption sensor for CO in combustion gases using 2.3 μm tunable diode lasers," *Measurement Science & Technology* **20**(11), 115201-115209 (2012).
- [5] H. I. Schiff, G. I. Mackay, and J. Bechara, "The use of tunable diode laser absorption spectroscopy for atmospheric measurements," *Research on Chemical Intermediates* **20**(3-5), 525-556 (1994).
- [6] H. E. Qi-Ling, G. L. Dai, and D. M. Wang, "Critical Value of CO of Forecasting Coal Spontaneous Combustion," *Journal of China University of Mining & Technology* **13**(2), 121-125 (2003).
- [7] Y. T. Liang, "Gas index method to predict coal spontaneous combustion," *Coal Science & Technology* **36**(6), 5-8 (2008).
- [8] J. Hodgkinson, and R. P. Tatam, "Optical gas sensing: a review," *Measurement Science & Technology* **24**(1), 012004 (2013).
- [9] J. Li, B. Yu, W. Zhao, and W. Chen, "A Review of Signal Enhancement and Noise Reduction Techniques for Tunable Diode Laser Absorption Spectroscopy," *Appl. Spectrosc. Rev.* **49**(8), 666-691 (2014).
- [10] H. Xia, W. Liu, Y. Zhang, R. Kan, M. Wang, Y. He, Y. Cui, J. Ruan, and H. Geng, "An approach of open-path gas sensor based on tunable diode laser absorption spectroscopy," *Chin. Opt. Lett.* **6**(6), 437-440 (2008).
- [11] H. Teichert, T. Fernholz, and V. Ebert, "Simultaneous *in situ* measurement of CO, H₂O, and gas temperatures in a full-sized coal-fired power plant by near-infrared diode lasers," *Appl. Opt.* **42**(12), 2043-2051 (2003).
- [12] T. Zhang, Y. Wei, Y. Li, Y. Zhao, T. Liu, and C. Wang, "High-resolution fiber carbon monoxide sensing system and its data processing," *Proceedings of SPIE - The International Society for Optical Engineering* **8924**(5), 89240L (2013).
- [13] R. Ghorbani, and F. M. Schmidt, "ICL-based TDLAS sensor for real-time breath gas analysis of carbon monoxide isotopes," *Opt. Express* **25**(11), 12743-12752 (2017).
- [14] J. A. Nwaboh, Z. Qu, O. Werhahn, and V. Ebert, "Interband cascade laser-based optical transfer standard for atmospheric carbon monoxide measurements," *Appl. Opt.* **56**(11), E84-E93 (2017).
- [15] S. Chourasia, N. Sreevalsen, S. Patil, A. Singh, R. Aggrawal, and A. J. Verma, "Development of Carbon monoxide Sensor based on DFB-QCL for Environmental Monitoring," in *International Conference on Fibre Optics and Photonics*, S5A-31 (2014).
- [16] J. Dang, H. Yu, C. Zheng, L. Wang, Y. Sui, and Y. Wang, "Development a low-cost carbon monoxide sensor using homemade CW-DFB QCL and board-level electronics," *Optics Laser Technology* **101**, 57-67 (2018).
- [17] J. C. Nicolas, A. N. Baranov, Y. Cuminal, Y. Rouillard, and C. Alibert, "Tunable diode laser absorption spectroscopy of carbon monoxide around 2.35 μm ," *Appl. Opt.* **37**(33), 7906-7911 (1998).
- [18] S. Wagner, M. Klein, T. Kathrotia, U. Riedel, T. Kissel, A. Dreizler, and V. Ebert, "Absolute, spatially resolved, *in situ* CO profiles in atmospheric laminar counter-flow diffusion flames using 2.3 μm TDLAS," *Appl. Phys. B* **109**(3), 533-540 (2012).
- [19] A. Sane, A. Satija, R. P. Lucht, and J. P. Gore, "Simultaneous CO concentration and temperature measurements using tunable diode laser absorption spectroscopy near 2.3 μm ," *Appl. Phys. B* **117**(1), 7-18 (2014).
- [20] V. Ebert, H. Teichert, P. Strauch, T. Kolb, H. Seifert, and J. Wolfrum, "Sensitive *in situ* detection of CO and O₂ in a rotary kiln-based hazardous waste incinerator using 760 nm and new 2.3 μm diode lasers," *Proceedings of the Combustion Institute* **30**(1), 1611-1618 (2005).
- [21] J. Chen, A. Hangauer, R. Strzoda, and M. C. Amann, "VCSEL-based calibration-free carbon monoxide sensor at 2.3 μm with in-line reference cell," *Appl. Phys. B* **102**(2), 381-389 (2010).
- [22] X. Chao, J. B. Jeffries, and R. K. Hanson, "Real-time, *in situ*, continuous monitoring of CO in a pulverized-coal-fired power plant with a 2.3 μm laser absorption sensor," *Appl. Phys. B* **110**(3), 359-365 (2013).
- [23] J. Dang, H. Yu, F. Song, Y. Wang, Y. Sun, and C. Zheng, "An early fire gas sensor based on 2.33 μm DFB laser," *Infrared Physics & Technology* **92**, 84-89 (2018).
- [24] R. Cui, L. Dong, H. Wu, S. Li, L. Zhang, W. Ma, W. Yin, L. Xiao, S. Jia, and F. K. Tittel, "Highly sensitive and selective CO sensor using a 2.33 μm diode laser and wavelength modulation spectroscopy," *Opt. Express* **26**(19), 24318-24328 (2018).
- [25] R. W. Paynter, "Modification of the Beer-Lambert equation for application to concentration gradients," *Surface & Interface Analysis* **3**(4), 186-187 (2010).
- [26] L. S. Rothman, I. E. Gordon, Y. Babikov, A. Barbe, D. C. Benner, P. F. Bernath, *et al.*, "The HITRAN2012 molecular spectroscopic database," *J. Quant. Spectros. Radiat. Transfer* **130**, 4-50 (2013).



Zhaowei Wang was born in Shandong, China, in 1988. He received B.S. degree in applied physics from Shandong University, China, in 2011 and Ph.D. degree in condensed matter physics from Shandong University, China, in 2016.

He joined Laser Institute, Qilu University of Technology (Shandong Academy of Sciences) in 2016, undertaking the research in the novel gas sensor development based on the mid-infrared laser and carbon monoxide sensor in the mining industry. He has authored and co-authored more than 30 journal papers.



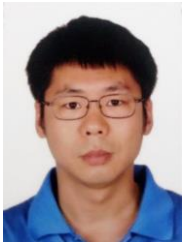
Yanfang Li was born in Shandong, China, in 1988. He received B.S. degree in applied physics from Shandong University, China, in 2011 and Ph.D. degree in condensed matter physics from Shandong University, China, in 2016.

He joined Laser Institute, Qilu University of Technology (Shandong Academy of Sciences) in 2016. He currently undertake the research in the novel gas sensor development based on the mid-infrared laser and carbon monoxide sensor in the mining industry. He has authored and co-authored more than 30 journal papers and more than 5 patents.



Tingting Zhang received the B.S. degree in electronic information from Ludong University, Yantai, China, in 2006, and the master's degree in pattern recognition and intelligent system from Xidian University, Xi'an, China, in 2009.

She joined Laser Institute of Shandong Academy of Sciences in 2009. She currently undertake the research in optical fiber multi-gas sensors for safety monitoring in coal mine. She has authored and co-authored more than 20 journal and conference papers and more than 5 patents.



Yubin Wei received the B.S. degree, M.S. degree in automation from Liaoning Shihua University, China, in 2002, 2005, and the Ph.D. degree in optical engineering from Shandong University in 2016, respectively.

He joined Laser Institute of Shandong Academy of Sciences in 2005, undertaking research in novel optical fiber sensor development for coal mine, petrochemical and power industries. He has authored and co-authored more than 30 journal and conference papers and more than 10 patents.



Yin Wang received the B.S. degree in physics from Qufu Normal University, China, in 2010 and Ph.D. degree in optics from University of Chinese Academy of Sciences, China, in 2015.

He joined Laser Institute of Shandong Academy of Sciences in 2015, undertaking the research in the novel gas sensor development for explosion early warning in

the petrochemical and oil-gas storage and transportation industries. He has authored and co-authored more than 25 journal and conference papers and more than 10 patents.



Jie Hu received the B.S. degree in physics from Qufu Normal University, China, in 2010 and Ph.D. degree in optics from University of Chinese Academy of Sciences, China, in 2015.

He joined Laser Institute of Shandong Academy of Sciences in 2015, undertaking the research in the novel gas sensor development for explosion early warning in the petrochemical and oil-gas storage and transportation industries. He has authored and co-authored more than 25 journal and conference papers and more than 10 patents.



Tongyu Liu received the B.Eng. degree in radio electronics from Shandong University, Jinan, China, in 1983, and the Ph.D. degree in materials science from Brunel University London, U.K., in 1999.

After 14 years of study and work in U.K., he joined Laser Institute of Shandong Academy of Sciences in 2004, undertaking research in novel optical fiber sensor development for physical and gas sensing. His recent research interests have been focused on fiber optic sensors for safety monitoring in coal mine, petrochemical, and power industries. He has authored and co-authored more than 150 journal and conference papers and more than 20 patents



Tong Sun received the B.Eng., M.Eng., and D.Eng. degrees in mechanical engineering from the Department of Precision Instrumentation, Harbin Institute of Technology, Harbin, China in 1990, 1993, and 1996 respectively, and the D.Phil. degree in applied physics from City University, London, U.K., in 1999.

She joined City University as an Academic Visitor and, latterly, as a Research Fellow to work in the field of fiber-optic temperature measurement using luminescent techniques. She was an Assistant Professor is at Nanyang Technological University, Singapore, from 2000 to 2001, and she is currently a Senior Lecturer at City University, which rejoined again in 2001. She has authored or co-authored more than 80 scientific and technical papers. Her research interests are in optical fiber sensors, optical communications, and laser engineering.



Kenneth T.V. Grattan received the B.S. degree in physics and the Ph.D. degree from Queen's University, Belfast, U.K., in 1974 and 1978, respectively.

He became a Postdoctoral Research Assistant at Imperial College, London, U.K. His research during that period was on laser systems for photo-physical systems investigations, and he and his colleagues constructed some of the first of the then new category of excimer lasers (XeF, KrF) in Europe in 1976. His work in the field continued with research using ultraviolet and vacuum ultraviolet lasers for photolytic laser fusion driver systems and studies on the photo-physics of atomic and molecular systems. In 1983, he joined City University, London, after five years at Imperial College, undertaking research in novel optical instrumentation, especially in fiber optic sensor development for physical and chemical sensing. The work has led into several fields, including luminescence-based thermometry, Bragg-grating based strain sensor systems, white light interferometry, optical system modeling, and design and optical sensors for water quality monitoring. The work has been extensively published in the major journals and at international conferences in the field, where regularly he has been an invited speaker, and over 500 papers have been authored to date. Multimillion dollar sponsorship for the work has come from industry, the research councils in the U.K., the European Union, and the Professional Bodies, with over 30 Ph.D. students graduating during that time. He was awarded the degree of Doctor of Science by City University in 1992. Dr. Grattan was awarded the degree of Doctor of Science by City University in 1992. He was Chairman of the Applied Optics Division of the U.K. Institute of Physics and President of the Institute of Measurement and Control in 2000.