



Job type and other socio-demographic factors associated with participation in a national, cross-sectional study of Danish employees

Johnsen, Nina Føns; Thomsen, Birthe Lykke; Hansen, Jørgen Vinsløv; Christensen, Birgitte Schütt; Rugulies, Reiner; Schlünssen, Vivi

Published in:
BMJ Open

DOI:
[10.1136/bmjopen-2018-027056](https://doi.org/10.1136/bmjopen-2018-027056)

Publication date:
2019

Document version
Publisher's PDF, also known as Version of record

Document license:
[CC BY-NC](#)

Citation for published version (APA):
Johnsen, N. F., Thomsen, B. L., Hansen, J. V., Christensen, B. S., Rugulies, R., & Schlünssen, V. (2019). Job type and other socio-demographic factors associated with participation in a national, cross-sectional study of Danish employees. *BMJ Open*, 9(8), [e027056]. <https://doi.org/10.1136/bmjopen-2018-027056>

BMJ Open Job type and other socio-demographic factors associated with participation in a national, cross-sectional study of Danish employees

Nina Føns Johnsen,¹ Birthe Lykke Thomsen,¹ Jørgen Vinsløv Hansen,¹ Birgitte Schütt Christensen,¹ Reiner Rugulies,^{1,2,3} Vivi Schlünssen^{1,4}

To cite: Johnsen NF, Thomsen BL, Hansen JV, *et al*. Job type and other socio-demographic factors associated with participation in a national, cross-sectional study of Danish employees. *BMJ Open* 2019;**9**:e027056. doi:10.1136/bmjopen-2018-027056

► Pre-publication history and additional material is published online only. To view please visit the journal online (<http://dx.doi.org/10.1136/bmjopen-2018-027056>).

Received 3 October 2018
Revised 27 May 2019
Accepted 7 June 2019



© Author(s) (or their employer(s)) 2019. Re-use permitted under CC BY-NC. No commercial re-use. See rights and permissions. Published by BMJ.

¹Department of Epidemiology and Surveillance, National Research Centre for the Working Environment, Copenhagen, Denmark

²Department of Public Health, University of Copenhagen, Copenhagen, Denmark

³Department of Psychology, University of Copenhagen, Copenhagen, Denmark

⁴Department of Public Health, Danish Ramazzini Centre, Aarhus University, Aarhus, Denmark

Correspondence to

Mrs. Nina Føns Johnsen; njohnsen@hjerterforeningen.dk

ABSTRACT

Objectives Participation in population-based surveys and epidemiological studies has been declining over the years in many countries. The aim of this study was to examine the association between job type and participation in the work environment and health in Denmark survey with/without taking into account other socio-demographic factors.

Design Cross-sectional survey using questionnaire data on working environment and registry data on job type, industry and socio-economic variables.

Setting The work environment and health study.

Participants A total of 50 806 employees (15 767 in a stratified workplace sample; 35 039 in a random sample) working at least 35 hours/month and earning at least 3000 Danish Kroner.

Outcome measures The outcome was participation (yes/no) and logistic regression was used to estimate the OR for participation with 95% CI.

Results In the random sample, women were more likely to participate than men, and married/non-married couples were more likely to participate than persons living alone or more families living together. Participation increased with higher age, higher annual personal income, higher education and Danish origin, and there were marked differences in participation between job types and geographical regions. For armed forces, craft and related trade workers, and skilled agricultural, forestry and fishery workers, the association between job type and participation was strongly attenuated after adjustment for sex and age. Additional adjustment for annual income, education, cohabitation, country of origin and geographical region generally attenuated the association between job type and participation. Similar results were found in the stratified workplace sample.

Conclusion In this population of Danish employees, participation varied across types of jobs. Some but not all the variation between job types was explained by other socio-demographic factors. Future studies using questionnaires may consider targeting efforts to (sub-)populations, defined by job type and other factors, where response probability is particularly important.

INTRODUCTION

Decreasing participation has been observed in population-based surveys and

Strengths and limitations of this study

- The large sample size is considered a major strength.
- The national coverage means that employees in all geographical areas and job groups are included.
- The access to almost complete registry data for both participants and non-participants limits potential information bias.
- However, the relatively crude job groups may potentially be too crude to identify an association between participation and job type.
- The missing information on education for 1400 individuals could have changed the association under study, but the sensitivity analyses did not confirm this.

epidemiological studies over years in many countries.^{1–3} This potentially hampers the possibility of achieving unbiased results as non-participation can not only influence prevalence estimates of environmental and occupational exposures but may also introduce selection bias in exposure–outcome associations^{2 4–7} if non-participation is related to both exposure and outcome. The generalisability of the results of an analysis is not an inherent property of the study population but depends on the target population as well as the combination of exposure, outcome and additional covariates considered in the analysis in question. Pearl and Bareinboim^{8 9} provide a formalisation of the necessary and sufficient conditions required for generalisability of causal effects together with a structured, graphical approach to identify the relevant scientific assumptions.

The aim of the national questionnaire survey ‘Work Environment and Health in Denmark’ (WEHD) is to monitor the work environment and health among employees in Denmark. The data are used for governmental monitoring purposes and evidence,

informing the working environment inspections, developing working environment initiatives, as a reference for job satisfaction surveys, and also for exposure–outcome research. The 2012 survey was the first of five planned surveys until 2020, including questions about physical and psychosocial working environment, health-related behaviours, working ability and health among a large group of employees.

Participation in surveys varies according to age and sex^{6 7 10–12} and occupational social class.¹³ Individuals with a low income or low educational level are typically under-represented in epidemiological studies and population-based surveys in Western countries.^{6 7 10–17}

One of the main aims of the WEHD is to generate work environment profiles for different job types (as defined by the DISCO-08 classification system, which is a Danish, and slightly modified version of International Standard Classification of Occupations 2008 (ISCO08)). Job type is an important indicator of socioeconomic status together with education and income, and it is possible that job type may capture some or all of the effect of income and education. Furthermore, job type may have an influence per se for example, if the job type reflects the individual's practical or social/cultural possibilities of responding. To our knowledge, job type has not been studied in relation to participation in observational studies. Because Danish national registers are available for research purposes, we had a unique opportunity to conduct a study with the aim of examining the associations between job types and other

socio-demographic factors and participation in WEHD 2012. We hypothesised that job type is a strong independent determinant for participation, and that job type may capture (some or all of) the variation in education and/or income. The WEHD study is used for estimation of both prevalence and exposure–outcome associations and for both estimations response representativity is crucial.

METHODS

Study population

The study was conducted as a cross-sectional survey. Figure 1 shows the flow chart for the WEHD 2012 populations. The source population for WEHD 2012 was all individuals living in Denmark, aged 18–64 years, who were employed between 30 November 2011 and 31 January 2012, worked ≥ 35 hours/month and earned at least 3000 Danish Kroner (Kr) per month (~US\$460).

Two samples fulfilling these criteria were drawn by Statistics Denmark. The first sample of employees (the stratified workplace sample) was drawn from 1060 selected workplaces (with at least 10 full-time equivalent employees). These companies were sampled stratified according to industry (five categories) and workplace size (small workplaces with 10–99 full-time equivalent employees; medium-sized workplaces with 100–499 full-time equivalent employees; large workplaces with at least 500 full-time equivalent employees). This target population consisted of 198 789 individuals, of whom 29 027 had

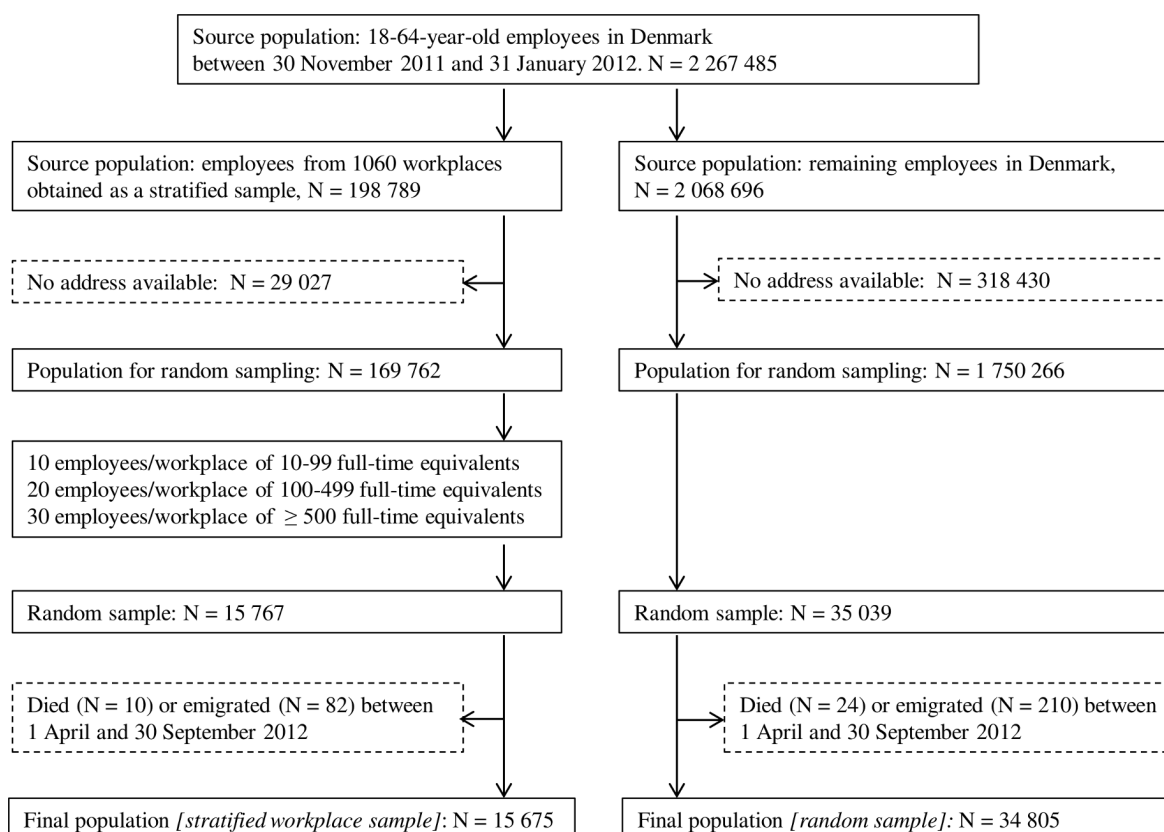


Figure 1 Flow chart for Work, Environment and Health 2012.

a secret address or a so-called 'research protection' in the Civil registration number (CPR) registry (a protection of own information, that any individual in Denmark could request before 2014 and that implied that researchers were prevented from getting the contact information needed to invite potential participants), leaving 169 762 individuals for the final population. A total of 10 employees were selected randomly from each of the small workplaces (10–99 full-time equivalent employees), 20 employees were selected randomly from the medium-sized workplaces (100–499 full-time equivalent employees) and 30 employees were selected randomly from the large workplaces (at least 500 full-time equivalent employees) resulting in 15 767 eligible individuals. Of those, 10 died and 82 emigrated between 1 April and 30 September 2012, resulting in a final sample of 15 675 employees.

The second sample (the random sample) was drawn from the population of 2 068 696 employees living in Denmark and not employed at the 1060 workplaces in the first sample. Of these, 318 430 had a secret or 'research protected' address, leaving 1 750 266 individuals for the final target population. A random sample of 35 039 employees was drawn from this population of which 24 died and 210 emigrated between 1 April and 30 September 2012, resulting in a final sample of 34 805 employees. To ensure generalisability, the primary results of the article are based on the random sample of employees, and results from the analyses on the stratified workplace sample are included as online supplementary material.

Data sources

In April 2012 potential participants were invited by a postal letter, including a link to a web-based questionnaire. Non-responders of the first contact received a second postal letter with a link to the questionnaire and an enclosed paper questionnaire. After these two contacts, non-responders were contacted up to two times by phone by a commercial research institute. They were asked whether they were still working and offered a new paper questionnaire.

Participation was defined as answering at least one question in the questionnaire, regardless if the questionnaire was the online version, the paper version or answered by phone.

Questionnaire data

The questionnaire comprised 51 questions on physical and psychosocial working environment, health-related behaviours, working ability and health. The questions related to current employment (eg, length of employment, transportation, working hours, job security), psychosocial working environment, work accidents and safety, noise, vibrations, skin exposures, physical demands including lifting, self-rated work ability, seniority and pension, sleep, vitality, pain, chronic disease including mental disorders, smoking, alcohol use, height and weight.

Registry data

Information about country of origin, cohabitation, education, annual personal income and type of job was extracted from Statistics Denmark using the unique, Danish civil identification number¹⁸ given to every Danish citizen. The registers contain historic information that is collected continuously for the entire Danish population from the civil registration system, taxation authorities and all Danish worksites for whom it is compulsory to report certain information about their employees.¹⁹ Age was defined as age on 15 March 2012. Information on job type was collected from the Danish E-income Registry and was based on the first digit of the DISCO-08 classification code, the Danish, and slightly modified version of International Standard Classification of Occupations 2008 (ISCO08).²⁰

Definition of variables

The outcome (participation) was defined as having answered at least one question in the questionnaire.

Job type was defined as one-digit ISCO08 number; sex had two levels (men and women); age was categorised in five categories (18–24, 25–34, 35–44, 45–54 and 55–64 years); annual personal income was categorised in three categories (<250 000 Kr; 250 000–430 000 Kr; >430 000 Kr); education in six categories (compulsory school system, upper secondary education and university preparatory schools and vocational education, academic level, missing data on education (Danish origin), missing data (Western origin), missing data (non-Western origin)); cohabitation was categorised in three categories (married or unmarried couple, living alone, more families living together); country of origin was categorised in three categories (Denmark; Western country, not Denmark; Non-Western country); and regarding geographical region of residence, the five Danish regions were used (Copenhagen, Zealand, Northern Jutland, Middle Jutland, Southern Jutland).

Statistical analyses

In the initial descriptive analyses, frequencies of characteristics of participants and non-participants were presented for both the random sample and the stratified workplace sample. The following results are based only on the random sample (to ensure generalisability as mentioned in Methods).

Logistic regression models were used to estimate the OR with 95% CI for participation. OR for each independent factor was estimated in four models: (1) model 1—unadjusted, (2) model 2—adjusted for age by sex, (3) model 3—model 2 further adjusted for personal income, education, cohabitation, country of origin and geographical region of residence and (4) model 4—model 3 further adjusted for job type. The full combination of age by sex (age in 1-year categories) was included in the analyses. The association of participation with income was modelled as a linear spline on the log-odds scale with knots in the quartiles: 262 000; 337 000; 427 000 Kr.

Table 1 Characteristics of participants and non-participants in the Work, Environment and Health 2012

	Random sample			Stratified workplace sample		
	Participation, proportion (%)	Participants, N	Non-participants, N	Participation, proportion (%)	Participants, N	Non-participants, N
All invited persons	50.5	17 591	17 214	54.1	8487	7188
Sex						
Men	44.6	8024	9948	48.9	3837	4025
Women	56.8	9567	7266	59.4	4650	3173
Age group (years)						
18–24	31.0	1223	2725	32.7	462	950
25–34	39.3	2355	3643	43.4	1007	1313
35–44	48.3	4197	4495	51.0	1998	1920
45–54	57.6	5467	4031	59.2	2747	1895
55–64	65.2	4349	2320	67.2	2273	1110
Country of origin						
Denmark	52.0	16 539	15 252	55.7	7959	6324
Western country, not Denmark	37.0	492	839	37.8	197	324
Non-Western country	33.3	560	1123	38.0	331	540
Cohabitation						
Married or unmarried couple	54.1	12 919	10 971	57.3	6251	4663
Living alone	45.4	3099	3726	48.7	1499	1577
More families living together	38.5	1573	2517	43.7	737	948
Highest achieved education						
Compulsory school system	41.7	2533	3543	44.4	1232	1541
Upper secondary education, university preparatory schools, vocational education	49.5	8749	8909	53.2	4326	3804
Academic level	60.2	6099	4032	64.1	2820	1580
No information education, persons of Danish origin	36.1	44	78	46.8	22	25
No information education, persons of Western origin, not Danish	20.1	108	430	16.4	35	178
No information education, persons of non-Western origin	20.7	58	222	46.4	52	60
Region in Denmark						
Copenhagen (capital)	48.0	5235	5680	53.6	2438	2107
Zealand	50.6	2422	2367	54.2	1213	1027
Northern Jutland	49.9	1791	1801	51.6	869	814
Middle Jutland	52.3	4225	3848	54.2	2149	1816
Southern Denmark	52.7	3918	3518	56.1	1818	1424
Annual, personal income						
<250 000 Danish Kroner (Kr) (~US\$38 000)	37.8	3079	5070	41.2	1216	1738
250 000–430 000 Kr (~US\$38 000–US\$66 000)	54.3	9784	8236	56.5	5096	3916
≥430 000 Kr (~US\$66 000)	54.7	4728	3908	58.6	2175	1534

Continued

Table 1 Continued

	Random sample			Stratified workplace sample		
	Participation, proportion (%)	Participants, N	Non-participants, N	Participation, proportion (%)	Participants, N	Non-participants, N
Job type (based on one-digit DISCO08)						
Managers	48.9	779	815	54.9	376	309
Professionals	60.0	5378	3585	63.8	2594	1473
Technicians and associate professionals	55.0	2282	1867	57.6	950	698
Clerical support workers	53.1	1627	3295	55.8	546	432
Service and sales workers	45.6	2767	1439	51.6	1552	1457
Skilled agricultural, forestry and fishery workers	47.7	82	90	49.2	31	32
Craft and related trades workers	45.2	1258	1525	44.8	879	1082
Plant and machine operators, and assemblers	47.7	824	905	49.0	555	578
Elementary occupations	41.6	2431	3407	47.4	1002	1110
Armed forces occupations	43.3	154	202	.	.	.
No DISCO code	9.7	9	84	.	.	.

The other factors of interest were included in the logistic regression models as categorical variables categorised as in the descriptive analyses. The associations with age by sex and income were displayed graphically and the associations with the other variables were presented in tables.

Sensitivity analyses

We excluded the 1400 individuals with no information on education and evaluated whether this changed the results.

Software

The statistical analyses were performed using the GLIMMIX procedure in SAS V.9.4 (SAS Institute) and the plots were performed using R V.3.1.2 (The R Foundation).

Patient and public involvement

There is no patient and public involvement in this study.

RESULTS

A total of 48% of the participants completed the web questionnaire and 52% the paper questionnaire, and 52% responded before the telephone reminder.

Characteristics of the study population

Table 1 shows the characteristics of participants and non-participants in the random sample of 34805 eligible employees as well as in the stratified workplace sample of 15675 eligible employees. A total of 17591 employees (50.5%) participated in the random sample of the survey. The two most prevalent job types in the random sample were professionals having the highest participation of

60% and elementary occupations having the lowest participation of 41.6%. The usual pattern for participation was seen for the other socio-demographic variables: women were more likely to participate than men, participation increased with age, personal income, higher education, cohabitation and Danish origin. Similar results were found for the workplace sample.

Results from regression analyses

Results from the logistic regression analysis of participation status in relation to job type and other socio-demographic factors can be seen in table 2 and figures 2 and 3. Table 2 shows that compared with professionals, the low participation among armed forces occupations (OR 0.46), craft and related trades workers (OR 0.52) and skilled agricultural, forestry and fishery workers (OR 0.59) was clearly increased by adjustment for sex and age (model 2: OR 0.85, 0.72 and 0.72, respectively). Further adjustment for the remaining socio-demographic variables generally attenuated the association between participation and job type, but the association with job type remained statistically significant (model 4: $p < 0.0001$). The adjustment for job type slightly attenuated the associations with education and cohabitation (model 4 compared with model 3), whereas adjustment for the other socio-demographic factors was more important regarding the association with country of origin (model 3 compared with model 2). However, all socio-demographic factors remained statistically significant in all investigated model. Similar results were found for the workplace sample, see online supplementary appendix table 1.

Figure 2 shows OR for participation by sex and age in 1-year categories. The crude ORs (model 1) were

Table 2 Logistic regression analyses on job type, other socioeconomic factors and participation status presented as crude and mutually adjusted OR (95 % CI) in the random sample of Work, Environment and Health 2012 (n=34 805)

	Participation versus non-participation			
	Model 1*	Model 2†	Model 3‡	Model 4§
Job type, p value	<0.0001	<0.0001		<0.0001
Managers	0.65 (0.60 to 0.71)	0.66 (0.60 to 0.72)	.	0.76 (0.69 to 0.84)
Professionals	1	1	.	1
Technicians and associate professionals	0.80 (0.75 to 0.85)	0.79 (0.74 to 0.84)	.	0.92 (0.86 to 0.99)
Clerical support workers	0.74 (0.69 to 0.79)	0.74 (0.69 to 0.84)	.	0.94 (0.86 to 1.02)
Service and sales workers	0.58 (0.55 to 0.61)	0.63 (0.59 to 0.67)	.	0.85 (0.79 to 0.91)
Skilled agricultural, forestry and fishery workers	0.59 (0.45 to 0.76)	0.72 (0.55 to 0.95)	.	0.93 (0.71 to 1.22)
Craft and related trades workers	0.52 (0.49 to 0.56)	0.72 (0.67 to 0.77)	.	0.88 (0.81 to 0.96)
Plant and machine operators, and assemblers	0.59 (0.54 to 0.64)	0.64 (0.59 to 0.70)	.	0.91 (0.82 to 1.00)
Elementary occupations	0.48 (0.46 to 0.51)	0.54 (0.50 to 0.57)	.	0.79 (0.74 to 0.85)
Armed forces occupations	0.46 (0.37 to 0.57)	0.85 (0.68 to 1.06)	.	0.98 (0.78 to 1.22)
No DISCO code	0.07 (0.04 to 0.14)	0.14 (0.07 to 0.26)	.	0.44 (0.22 to 0.86)
Country of origin, p value	<0.0001	<0.0001	<0.0001	<0.0001
Denmark	1	1	1	1
Western country, not Denmark	0.52 (0.47 to 0.57)	0.58 (0.52 to 0.64)	0.82 (0.71 to 0.95)	0.83 (0.71 to 0.96)
Non-Western country	0.47 (0.43 to 0.51)	0.55 (0.51 to 0.60)	0.70 (0.62 to 0.78)	0.72 (0.64 to 0.81)
Cohabitation, p value	<0.0001	<0.0001	<0.0001	<0.0001
Married or unmarried couple	1	1	1	1
Living alone	0.71 (0.67 to 0.75)	0.75 (0.71 to 0.80)	0.76 (0.72 to 0.81)	0.76 (0.72 to 0.81)
More families living together	0.53 (0.50 to 0.57)	0.64 (0.60 to 0.69)	0.73 (0.68 to 0.78)	0.74 (0.68 to 0.79)
Education, p value	<0.0001	<0.0001	<0.0001	<0.0001
Compulsory school system	0.73 (0.69 to 0.77)	0.71 (0.67 to 0.76)	0.74 (0.70 to 0.79)	0.76 (0.71 to 0.81)
Upper secondary education, vocational education, etc.	1	1	1	1
Academic level	1.54 (1.47 to 1.62)	1.41 (1.33 to 1.48)	1.45 (1.37 to 1.53)	1.34 (1.25 to 1.43)
Missing education, Danish origin	0.57 (0.40 to 0.83)	0.49 (0.34 to 0.92)	0.51 (0.35 to 0.75)	0.53 (0.36 to 0.78)
Missing education, Western origin, not Danish	0.26 (0.21 to 0.32)	0.35 (0.28 to 0.44)	0.49 (0.38 to 0.64)	0.52 (0.40 to 0.68)
Missing education, non-Western origin	0.27 (0.20 to 0.36)	0.38 (0.28 to 0.51)	0.64 (0.46 to 0.88)	0.68 (0.50 to 0.95)
Region in Denmark, p value	<0.0001	<0.0001	<0.0001	<0.0001
Copenhagen (capital)	0.93 (0.86 to 1.00)	0.95 (0.88 to 1.03)	0.95 (0.87 to 1.02)	0.94 (0.87 to 1.02)
Zealand	1.03 (0.94 to 1.12)	0.96 (0.88 to 1.05)	0.96 (0.88 to 1.05)	0.96 (0.88 to 1.05)
Northern Jutland	1	1	1	1
Middle Jutland	1.10 (1.02 to 1.19)	1.11 (1.02 to 1.20)	1.09 (1.00 to 1.18)	1.09 (1.00 to 1.18)
Southern Denmark	1.12 (1.03 to 1.21)	1.11 (1.02 to 1.20)	1.10 (1.02 to 1.20)	1.11 (1.02 to 1.20)

*Model 1: OR for each factor separately.

†Model 2: OR for each factor separately adjusted for age*sex.

‡Model 3: OR mutually adjusted and further adjusted for age*sex and income (as a spline function).

§Model 4: model 3+job type.

higher for women compared with those for men for all age groups, except for employees aged 64 years, where men and women had similar ORs. There was a steadily increasing participation with age among both men and

women, except that men aged 20 years or younger had a higher OR for participation compared with men aged 20–26 years. When adjusted for all socio-demographic factors except job type (model 3), the lower participation

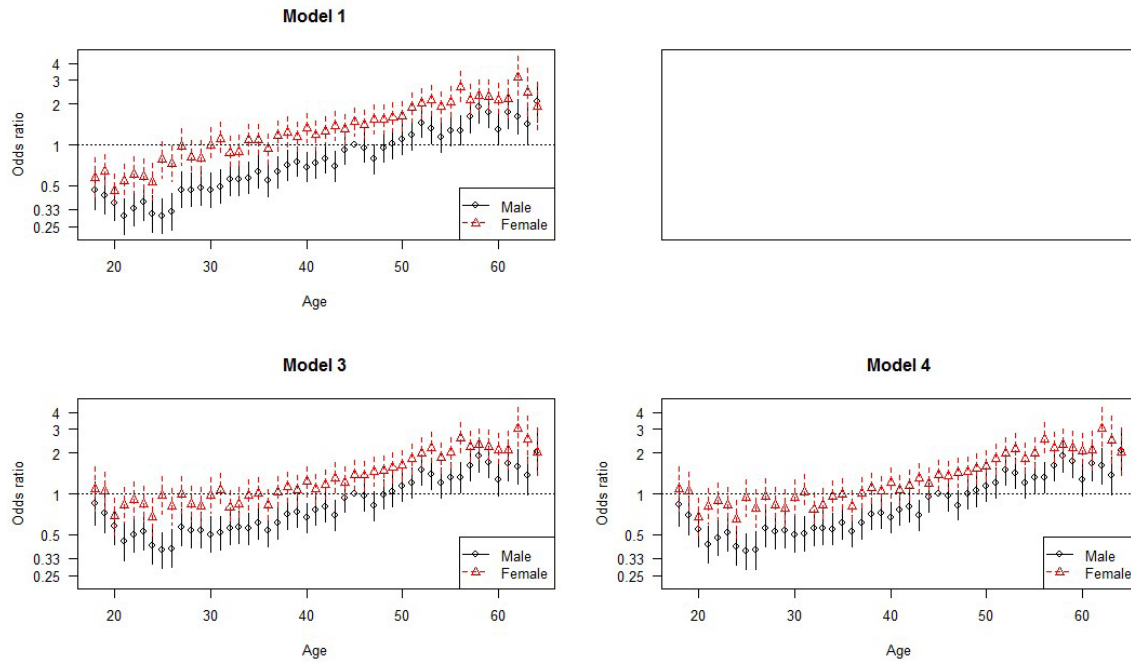


Figure 2 OR (95% CI) for participation by sex and age in 1-year categories for employees in the random sample of Work, Environment and Health 2012. Model 1: Crude OR by age and sex. Model 3: OR adjusted for country of origin, cohabitation, education, region, age*sex and annual income (as a spline function). Model 4: model 3+jobtype. Reference value: men aged 45 years.

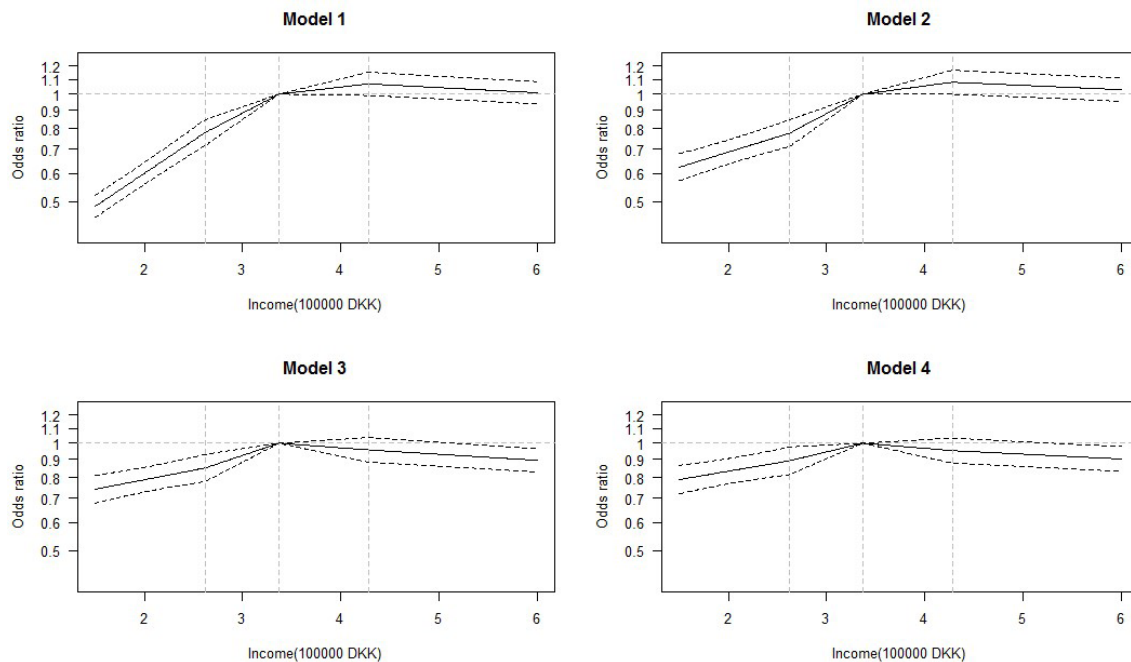


Figure 3 OR (95% CI) for participation by annual, personal income (as spline function) among 34 805 employees in the random sample of Work, Environment and Health 2012. Reference value: the median income, 353 000 Danish Kroner (~US\$50 000). Model 1: crude OR by income. Model 2: model 1 adjusted for age*sex. Model 3: model 2 further adjusted for country of origin, cohabitation, education, region and age*sex. Model 4: model 3 further adjusted for job type.

among 18–25-year-old individuals compared with same-sex older individuals disappeared, but the difference between the two sexes remained. Additional adjustment for job type (model 4) made almost no difference.

For individuals above 26 years of age, the ORs in the crude and adjusted analyses were similar. Similar results were found for the workplace sample, online supplementary appendix figure 1.

ORs for participation by personal income with the median income as reference can be seen in [figure 3](#). In the crude analysis a gradual increase from OR 0.5 for employees with the lowest income to OR slightly above 1 for employees with the highest income was evident. Adjustment for age by sex slightly attenuated the association below the median income (model 3). Further adjustment for education, cohabitation, country of origin and region clearly attenuated the associations across the whole range (model 3), whereas additional adjustment for job type made no difference (model 4). Similar results were found for the workplace sample, online supplementary appendix figure 2.

Results from sensitivity analyses

Excluding the 1400 individuals with no information on education did not change the results substantially.

DISCUSSION

Key results

The results of this study showed that participation in WEHD 2012 varied between job types. This variation was partly explained by differences in sex and age for armed forces occupations, craft and related trade workers, and skilled agricultural, forestry and fishery workers, and by personal income, education, cohabitation, country of origin, and geographical region for all job types. All socio-demographic factors remained statistically significant when mutually adjusted.

Strengths and limitations

The major strengths of this study are the large sample size, the national coverage and the access to almost complete registry data available for both participants and non-participants. Potential limitations are the relatively crude job groups, and missing information on education for 1400 individuals. The sensitivity analysis addressed the potential limitation on missing data. Unfortunately, we did not have sufficient statistical power to conduct analyses with more detailed job groups.

Furthermore, some job groups were small. For example, the number of employees with no DISCO code is 84; consequently, the result for this group could potentially be affected by sparse data bias and should therefore be interpreted with caution.²¹

In a cross-sectional study like this, all the variables are measured at the same point in time; therefore, cross-sectional studies are not well suited for drawing any conclusions about causality. However, in this study our scope was to characterise participants and assess associations between individual, characteristics based on registry data, and therefore, temporality is not a major concern.

Previous studies

Our results confirm previous studies with regard to the importance of socio-demographic factors like sex and age, education and socioeconomic indicators for survey

participation.^{6 7 10–17} Furthermore we were able to show that job type can be added to this list as an independent predictor of survey participation, at least in a study on work environment and health.

Studies have shown that follow-up procedures,²² a relevant study aim (potentially affecting the individual in question), and monetary incentives can be used to increase participation rates.²³ However, the effect of monetary incentives was related to education and income.²⁴ It has also been shown that applying different data collection methods on different population subgroups can increase participation rates and produce more representative samples. For example face-to-face recruitment and data collection,²⁵ telephone interviews or printed letters can be used as an alternative to mail/web-based surveys or vice versa.^{26–31} In such case, the researchers need to weigh the benefit of higher participation against the possibility that participation as well as actual answers to a given question may differ according to the method used. In contrast, long and exhaustive questionnaires, difficult accessibility to the questionnaire, or both, are typically associated with lower participation.³²

Therefore, questionnaires should first be designed to be easily accessible and then different incentives and data collection methods (including stratified sampling) may be considered. However, it is important to note that low participation not necessarily means a high level of bias and that, vice versa, a high participation not necessarily means a low level of bias. Some efforts to increase participation may in fact increase bias if the consequence of this effort is selective participation, or unwillingness to participate in future studies.

Concluding remarks

In this population of Danish employees, we found a relatively small but independent effect of job type on participation. We also found socio-demographically imbalanced participation as reported in previous survey studies. The low participation in the age groups below 25 years of age could be explained by the socio-demographic factors, personal income, education, cohabitation, country of origin and geographical region of residence. Further adjustment for job type did not change the estimated association with sex and age.

Future studies using questionnaires may consider using different data collection methods and incentives for different (sub-)populations defined by job type and other factors, for example face-to-face interviews in populations with low education or elementary occupations, and monetary incentives in the younger age groups.

The authors believe that the results of this study on participation in the WEHD2012 can be generalised to the general Danish work force aged 18–64 years because they are represented by the random sample of this study and because registry data are used.

Ethics

Because the study did not include biological samples, no further approval was required. According to the Helsinki Declaration participants were informed that participation was voluntary and that they could withdraw themselves (and their data) from the study at any time.

Contributors BLT and JVH established a strategy for the statistical analyses. NFJ, JVH, BSC and BLT conducted the statistical analyses. NFJ interpreted the results in close cooperation with the rest of the authors (JVH, BSC, VS, BLT, RR). NFJ and VS drafted the manuscript. All the authors read and approved the final version of the manuscript.

Funding This research received no specific grant from any funding agency in the public, commercial or not-for-profit sectors.

Competing interests None declared.

Patient consent for publication Not required.

Ethics approval The Work Environment and Health Survey was registered and approved by the Danish Data Protection Agency (journal number 2015-57-0074).

Provenance and peer review Not commissioned; externally peer reviewed.

Data sharing statement All relevant source data are shown in the manuscript and supplementary files. If access to raw data is required, please contact Nina Føns Johnsen at nfj@nfa.dk. Data may be shared if all ethical and legal requirements are met.

Open access This is an open access article distributed in accordance with the Creative Commons Attribution Non Commercial (CC BY-NC 4.0) license, which permits others to distribute, remix, adapt, build upon this work non-commercially, and license their derivative works on different terms, provided the original work is properly cited, appropriate credit is given, any changes made indicated, and the use is non-commercial. See: <http://creativecommons.org/licenses/by-nc/4.0/>.

REFERENCES

- Hartge P. Raising response rates: getting to yes. *Epidemiology* 1999;10:105–7.
- Nohr EA, Frydenberg M, Henriksen TB, *et al*. Does low participation in cohort studies induce bias? *Epidemiology* 2006;17:413–8.
- Christensen AI, Ekholm O, Kristensen PL, *et al*. The effect of multiple reminders on response patterns in a Danish health survey. *Eur J Public Health* 2015;25:156–61.
- Austin MA, Criqui MH, Barrett-Connor E, *et al*. The effect of response bias on the odds ratio. *Am J Epidemiol* 1981;114:137–43.
- Stang A. Nonresponse research--an underdeveloped field in epidemiology. *Eur J Epidemiol* 2003;18:929–32.
- Lundberg I, Damström Thakker K, Hällström T, *et al*. Determinants of non-participation, and the effects of non-participation on potential cause-effect relationships, in the PART study on mental disorders. *Soc Psychiatry Psychiatr Epidemiol* 2005;40:475–83.
- Johannessen A, Verlato G, Benediktsdottir B, *et al*. Longterm follow-up in European respiratory health studies - patterns and implications. *BMC Pulm Med* 2014;14:63.
- Pearl J, Bareinboim E. External Validity: From Do-Calculus to Transportability Across Populations. *Statistical Science* 2014;29:579–95.
- Pearl J. Generalizing of Experimental Findings. *J Causal Infer* 2015;3:259–66.
- Korkeila K, Suominen S, Ahvenainen J, *et al*. Non-response and related factors in a nation-wide health survey. *Eur J Epidemiol* 2001;17:991–9.
- Sogaard AJ, Selmer R, Bjertness E, *et al*. The Oslo Health Study: the impact of self-selection in a large, population-based survey. *Int J Equity Health* 2004;3(1):3.
- Stang A, Moebus S, Dragano N, *et al*. Baseline recruitment and analyses of nonresponse of the Heinz Nixdorf Recall Study: identifiability of phone numbers as the major determinant of response. *Eur J Epidemiol* 2005;20:489–96.
- Martikainen P, Laaksonen M, Piha K, *et al*. Does survey non-response bias the association between occupational social class and health? *Scand J Public Health* 2007;35:212–5.
- Shahar E, Folsom AR, Jackson R. The effect of nonresponse on prevalence estimates for a referent population: Insights from a population-based cohort study. *Ann Epidemiol* 1996;6:498–506.
- Fejer R, Hartvigsen J, Kyvik KO, *et al*. The Funen Neck and Chest Pain study: analysing non-response bias by using national vital statistic data. *Eur J Epidemiol* 2006;21:171–80.
- Huang N, Shih SF, Chang HY, *et al*. Record linkage research and informed consent: who consents? *BMC Health Serv Res* 2007;7:18.
- Jacobsen TN, Nohr EA, Frydenberg M. Selection by socioeconomic factors into the Danish National Birth Cohort. *Eur J Epidemiol* 2010;25:349–55.
- Pedersen CB. The Danish Civil Registration System. *Scand J Public Health* 2011;39:22–5.
- Baadsgaard M, Quitzau J. Danish registers on personal income and transfer payments. *Scand J Public Health* 2011;39:103–5.
- International Labour Organization. International Standard Classification of Occupations [online]. 2018. Available at <http://www.ilo.org/public/english/bureau/stat/isco/isco08/> (accessed Apr 2018).
- Greenland S, Mansournia MA, Altman DG. Sparse data bias: a problem hiding in plain sight. *BMJ* 2016;352:i1981.
- Collins RL, Ellickson PL, Hays RD, *et al*. Effects of incentive size and timing on response rates to a follow-up wave of a longitudinal mailed survey. *Eval Rev* 2000;24:347–63.
- James JM, Bolstein R. The Effect of Monetary Incentives and Follow-Up Mailings on the Response Rate and Response Quality in Mail Surveys. *Public Opin Q* 1990;54:346–61.
- Singer E, Groves RM, Dillman DA, Eltinger JL, Little RJA, *et al*. eds. *The use of incentives to reduce nonresponse in household surveys*. New York, NY: Wiley-Interscience, 2002:163–77.
- Bongers IM, Van Oers JA. Mode effects on self-reported alcohol use and problem drinking: mail questionnaires and personal interviewing compared. *J Stud Alcohol* 1998;59:280–5.
- O'Toole BI, Battistutta D, Long A, *et al*. A comparison of costs and data quality of three health survey methods: mail, telephone and personal home interview. *Am J Epidemiol* 1986;124:317–28.
- Brambilla DJ, McKinlay SM. A comparison of responses to mailed questionnaires and telephone interviews in a mixed mode health survey. *Am J Epidemiol* 1987;126:962–71.
- Fowler FJ, Gallagher PM, Stringfellow VL, *et al*. Using telephone interviews to reduce nonresponse bias to mail surveys of health plan members. *Med Care* 2002;40:190–200.
- Zaslavsky AM, Zaborski LB, Cleary PD. Factors affecting response rates to the Consumer Assessment of Health Plans Study survey. *Med Care* 2002;40:485–99.
- McMahon SR, Iwamoto M, Massoudi MS, *et al*. *Pediatrics* 2003;111:e299–e303.
- Beebe TJ, Davern ME, McAlpine DD, *et al*. Increasing response rates in a survey of Medicaid enrollees: the effect of a prepaid monetary incentive and mixed modes (mail and telephone). *Med Care* 2005;43:411–4.
- Mott DA, Pedersen CA, Doucette WR, *et al*. A national survey of US pharmacists in 2000: assessing non-response bias of a survey methodology. *AAPS Pharm Sci* 2000;3:E33.