

Washington University School of Medicine

Digital Commons@Becker

---

Open Access Publications

---

2019

## Diffusion basis spectrum imaging provides insights into MS pathology

Peng Sun

Ajit George

Dana C. Perantie

Kathryn Trinkaus

Zezhong Ye

*See next page for additional authors*

Follow this and additional works at: [https://digitalcommons.wustl.edu/open\\_access\\_pubs](https://digitalcommons.wustl.edu/open_access_pubs)

---

---

**Authors**

Peng Sun, Ajit George, Dana C. Perantie, Kathryn Trinkaus, Zezhong Ye, Robert T. Naismith, Sheng-Kwei Song, and Anne H. Cross

---

# Diffusion basis spectrum imaging provides insights into MS pathology

Peng Sun, PhD, Ajit George, PhD, Dana C. Perantie, MPH, Kathryn Trinkaus, PhD, Zezhong Ye, PhD, Robert T. Naismith, MD, Sheng-Kwei Song, PhD, and Anne H. Cross, MD

**Correspondence**  
Dr. Cross  
crossa@wustl.edu

*Neurol Neuroimmunol Neuroinflamm* 2020;7:e655. doi:10.1212/NXI.0000000000000655  
e655

## Abstract

### Objective

To use diffusion basis spectrum imaging (DBSI) to assess how damage to normal-appearing white matter (NAWM) in the corpus callosum (CC) influences neurologic impairment in people with MS (pwMS).

### Methods

Using standard MRI, the primary pathologies in MS of axonal injury/loss, demyelination, and inflammation are not differentiated well. DBSI has been shown in animal models, phantoms, and in biopsied and autopsied human CNS tissues to distinguish these pathologies. Fifty-five pwMS (22 relapsing-remitting, 17 primary progressive, and 16 secondary progressive) and 13 healthy subjects underwent DBSI analyses of NAWM of the CC, the main WM tract connecting the cerebral hemispheres. Tract-based spatial statistics were used to minimize misalignment. Results were correlated with scores from a battery of clinical tests focused on deficits typical of MS.

### Results

Normal-appearing CC in pwMS showed reduced fiber fraction and increased nonrestricted isotropic fraction, with the most extensive abnormalities in secondary progressive MS (SPMS). Reduced DBSI-derived fiber fraction and increased DBSI-derived nonrestricted isotropic fraction of the CC correlated with worse cognitive scores in pwMS. Increased nonrestricted isotropic fraction in the body of the CC correlated with impaired hand function in the SPMS cohort.

### Conclusions

DBSI fiber fraction and nonrestricted isotropic fraction were the most useful markers of injury in the NAWM CC. These 2 DBSI measures reflect axon loss in animal models. Because of its ability to reveal axonal loss, as well as demyelination, DBSI may be a useful outcome measure for trials of CNS reparative treatments.

---

From the Radiology (P.S., A.G., Z.Y., S.-K.S.), Washington University in Saint Louis, MO; Neurology (D.C.P., R.T.N., A.H.C.), Washington University in Saint Louis, MO; and Biostatistics Shared Resource (K.T.), Washington University in Saint Louis, Siteman Cancer Center, Washington University School of Medicine, St Louis, MO.

Go to [Neurology.org/NN](https://www.neurology.org/NN) for full disclosures. Funding information is provided at the end of the article.

The Article Processing Charge was funded by the National Institutes of Health.

This is an open access article distributed under the terms of the Creative Commons Attribution-NonCommercial-NoDerivatives License 4.0 (CC BY-NC-ND), which permits downloading and sharing the work provided it is properly cited. The work cannot be changed in any way or used commercially without permission from the journal.

## Glossary

**AD** = axial diffusivity; **BBB** = blood-brain barrier; **BVMT-R** = Brief Visuospatial Memory Test–Revised; **CC** = corpus callosum; **DBSI** = diffusion basis spectrum imaging; **dMRI** = diffusion MRI; **DTI** = diffusion tensor imaging; **DWI** = diffusion-weighted image; **EDSS** = Expanded Disability Status Scale; **FA** = fractional anisotropy; **FLAIR** = fluid-attenuated inversion recovery; **Fr** = fraction; **FSL** = Functional MRI of the Brain Software Library; **FTW** = foot walk; **HC** = healthy control; **HPT** = Hole Peg Test; **IQR** = interquartile range; **MPRAGE** = magnetization-prepared rapid gradient-echo sequence; **MSFC** = MS Functional Composite; **NAWM** = normal-appearing white matter; **PPMS** = primary progressive MS; **pwMS** = people with MS; **RD** = radial diffusivity; **RRMS** = relapsing-remitting MS; **SDMT** = Symbol Digit Modalities Test; **SPMS** = secondary progressive MS; **SRT** = Selective Reminding Test; **TBSS** = tract-based spatial statistics; **TFCE** = threshold-free cluster enhancement; **WM** = white matter.

MS is a common inflammatory CNS disorder, affecting over 600,000 people in the United States.<sup>1</sup> Irreversible axonal injury and loss are believed to be the main causes of permanent neurologic impairments in MS. Yet, standard MRI does not measure axonal loss.<sup>2</sup> To address the need for a noninvasive method to detect and discriminate axonal loss from other pathologies, such as inflammation and demyelination, we developed diffusion basis spectrum imaging (DBSI) to accurately detect and distinguish components of white matter (WM) pathologies in MS.<sup>3</sup> Using preclinical models, we previously showed that DBSI quantitatively assessed apparent axonal density (anisotropic diffusion tensor fraction), apparent cellularity (restricted isotropic diffusion tensor fraction), and edema and tissue loss (nonrestricted isotropic diffusion tensor fraction).<sup>3–5</sup>

We hypothesized that DBSI metrics reflecting axon damage in normal-appearing WM (NAWM) would correlate with neurologic impairment in people with MS (pwMS). The corpus callosum (CC) is a major WM structure connecting the 2 cerebral hemispheres that is frequently affected by MS pathology.<sup>6</sup> We used DBSI and tract-based spatial statistics (TBSS), a widely used approach to avoid registration errors,<sup>7</sup> to assess NAWM of the CC in pwMS and healthy controls (HCs). We compared DBSI analysis on a TBSS WM skeleton between cohorts representing the 3 main clinical subtypes of MS.<sup>8</sup> DBSI findings at the voxel level and region of interest level were examined for correlations with results of standardized tests of cognition and physical function.

## Methods

### Human subjects

Procedures were approved by the Institutional Review Board of Washington University. Each participant provided written informed consent. Thirteen HC subjects and 55 pwMS with clinical subtypes confirmed by 2 investigators, including 22 with relapsing-remitting MS (RRMS), 16 with secondary progressive MS (SPMS), and 17 with primary progressive MS (PPMS), were enrolled between 2014 and 2017. Knowing that the subjects with SPMS and PPMS would be older, we purposefully recruited older subjects with RRMS so that the MS clinical subtype cohorts would be of similar ages to reduce the confounding effect of age on MRI findings.

### Clinical evaluation

All subjects, including HCs, completed a battery of clinical tests within 5 days of imaging, administered by trained examiners who were blinded to DBSI findings. Tests included the Expanded Disability Status Scale (EDSS), a global composite of neurologic function with particular emphasis on gait and considered as a “gold standard” in MS, and the Multiple Sclerosis Functional Composite (MSFC, comprising 9-Hole Peg Test [of upper extremity function], Timed 25-Foot Walk [test of gait and leg function], and 3- and 2-second Paced Auditory Serial Addition Test [PASAT2, PASAT3, test of attention, working memory, and auditory processing speed]). Because more than 50% of pwMS are impaired in the cognitive domains of processing speed, and learning and memory,<sup>9</sup> additional tests of cognition were performed: the Symbol Digit Modalities Test (to assess attention and visuospatial processing speed) and the Brief Visuospatial Memory Test–Revised, total and delayed recall (to assess visuospatial memory and processing speed), and Selective Reminding Test total and delayed recall (to assess verbal memory, new learning, and recall). Published normative results were used to calculate z-scores.<sup>9</sup>

### MRI acquisition

Subjects underwent MRI at 3.0T (Trio; Siemens, Erlangen, Germany) using a 32-channel head coil. T1 weighted magnetization-prepared rapid gradient-echo (MPRAGE) scan with an isotropic 1 mm<sup>3</sup> resolution was used for identification of structural landmarks and for coregistration (repetition time [TR] = 2,400 ms, echo time [TE] = 3.16 ms, inversion time [TI] = 1,000 ms, matrix = 256 × 224, field of view [FOV] = 256 × 224 mm<sup>2</sup>, resolution = 1 × 1 × 1 mm<sup>3</sup>). A fluid-attenuated inversion recovery (FLAIR) scan was acquired to quantify visible WM lesions (TR = 7,500 ms, TI = 2,500 ms, TE = 210 ms, TI = 2,500 ms, matrix = 256 × 256, FOV = 256 × 256 mm<sup>2</sup>, resolution = 1 × 1 × 1 mm<sup>3</sup>). Diffusion-weighted images (DWIs) were collected with a 99-direction multi-b-value diffusion encoding scheme by single-shot spin-echo echo-planar imaging sequence with the following key parameters: voxel size = 2 × 2 × 2 mm<sup>3</sup>; maximum b value = 1,500 seconds/mm<sup>2</sup>; acquisition time = 16 minutes. Two transverse non-diffusion-weighted images (b = 0 s/mm<sup>2</sup>) with opposite polarity of the phase encoding direction (AP and PA) were acquired for image processing.

## Image processing and lesion mapping

DWIs were preprocessed to minimize motion and susceptibility artifact due to nonzero off-resonance fields. The FSL-based “TOPUP” tool, which estimates the susceptibility-induced off-resonance field from pairs of images, with reversed phase-encode blips and distortions going in opposite directions,<sup>10</sup> and the Functional MRI of the Brain Software Library (FSL)-based “EDDY” tool, which corrects image distortions by combining the correction for susceptibility and eddy currents/movements, were used. Both  $B_0$  and FLAIR images were aligned to MPRAGE using an affine registration. WM lesions were manually traced on FLAIR. Subsequently, each lesion mask was nonlinearly transformed onto a common WM skeleton and lesions removed to reveal NAWM before statistical analysis.

## DBSI

DBSI metric maps were estimated on the preprocessed DW images using the in-house software developed using MATLAB. DBSI models diffusion-weighted MRI signals as a linear combination of multiple tensors describing both the discrete anisotropic axonal fibers and an isotropic diffusion spectrum encompassing the full range of diffusivities,<sup>3</sup> equation 1.

$$S_k = \sum_{i=1}^{N_{Aniso}} f_i e^{-|\vec{b}_k| \cdot \lambda_{\perp i}} e^{-|\vec{b}_k| \cdot (\lambda_{\parallel i} - \lambda_{\perp i}) \cdot \cos^2 \psi_{ik}} + \int_a^b f(D) e^{-|\vec{b}_k| \cdot D} dD \quad (k = 1, 2, \dots, K) \quad (1)$$

where  $S_k$  and  $|\vec{b}_k|$  are the normalized signal and b value of the  $k^{\text{th}}$  diffusion gradient,  $N_{Aniso}$  is the number of anisotropic tensors,  $\psi_{ik}$  is the angle between the  $k^{\text{th}}$  diffusion gradient and the principal direction of the  $i^{\text{th}}$  anisotropic tensor,  $\lambda_{\parallel i}$  and  $\lambda_{\perp i}$  are the axial diffusivity (AD) and radial diffusivity (RD) of the  $i^{\text{th}}$  anisotropic tensor,  $f_i$  is the signal intensity fraction for the  $i^{\text{th}}$  anisotropic tensor, and  $a$  and  $b$  are the low and high diffusivity limits for the isotropic diffusion spectrum  $f(D)$ . The anisotropic diffusion component describes water molecules inside and immediately outside myelinated or nonmyelinated axons. DBSI-derived anisotropic signal intensity fractions ( $f_i$ , i.e., fiber fraction) can also be defined as apparent axonal density in WM. DBSI-derived AD and RD retain the pathologic specificity for axonal injury and demyelination as previously proposed but with fewer confounds from coexisting MS pathologies using DBSI.

Cellular and axonal packing plays a crucial role in extracellular and extra-axonal diffusion characteristics. Less restricted or non-restricted isotropic diffusion components represent water molecules in less densely packed environments, such as areas of tissue disintegration or edema or nonrestricted water within CSF.<sup>3,11,12</sup> The DBSI-derived “restricted” isotropic diffusion fraction (ADC  $\leq 0.3 \mu\text{m}^2/\text{ms}$ ) has been shown to reflect cellularity.<sup>3</sup>

## Quantification of dMRI metrics on WM skeleton

Whole-brain WM, voxel-wise statistical analysis of the images was performed in blinded fashion on a common WM skeleton created using TBSS with the following steps.<sup>7</sup> First, fractional

anisotropy (FA) maps were computed for each subject. Next, all FA maps from all subjects were aligned to standard-space image (JHU-ICBM-FA-1 mm in Montreal Neurological Institute 152 space) using the FSL nonlinear image registration tool FNIRT.<sup>13</sup> The aligned FA maps were then averaged to produce a group mean image, thus generating an FA skeleton to highlight the tracts common to the entire group. For each subject, an FA threshold of 0.2 was used before projecting the aligned FA map onto this skeleton. For subjects with MS, lesions were manually demarcated on anatomical MRI and then excluded before any statistical analysis. Resulting skeletonized FA maps became the WM skeletons for subsequent analyses comparing subtypes. All DBSI metrics were projected onto this WM skeleton for voxel-based and for region-based statistical analyses.

The proportions of the CC that were significantly different from the HC group were calculated by equation 2 and indicated in figure 1.

$$\text{Affected volumes (\%)} = \frac{\text{voxels with significant difference}}{\text{total voxel numbers}} \quad (2)$$

## Statistical analysis

Two types of analyses, voxel-level and region-level analyses, were performed on the WM skeleton of the CC.

### Voxel-based group comparison

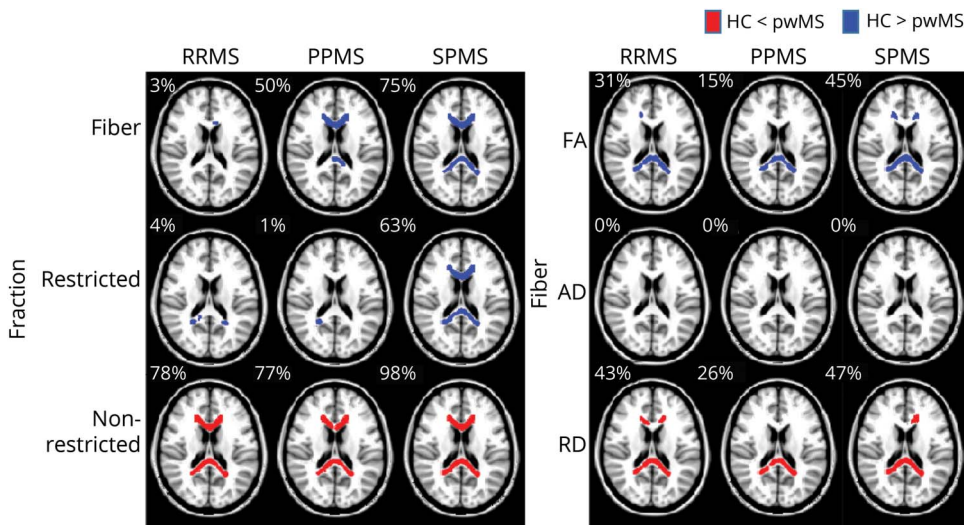
Nonparametric permutation tests were used for voxel-wise statistical analysis of the skeletons between HC and pwMS.<sup>7</sup> The threshold-free cluster enhancement (TFCE) method was applied to the statistical maps to enhance cluster-like structures within the images and produce output images in which the voxel-wise values represent the amount of cluster-like local spatial support.<sup>14</sup> This combination of permutation testing and TFCE produced a “smooth” (i.e., continuous) map of corrected  $p$  values, 1 per voxel, that took into account spatial dependency in the data. The significance level was set at  $p \leq 0.05$  after family-wise error correction for multiple comparisons. The statistical analyses were performed using the FSL tool RANDOMIZE.<sup>15</sup>

### Region-based analyses

Median values of diffusion metrics within each region, including the whole CC and its subregions, were compared among patient subtypes. Subregions of the CC (splenium, body, and genu) were based on the WM parcellations defined in ICBM-DTI-81 WM labels.<sup>16</sup> Kruskal-Wallis one-way nonparametric analysis of variance was used to test for any differences between MS subtypes. A post hoc nonparametric test using the Fisher least significant difference method with Holm-Bonferroni correction indicated the existence of significant differences between subtypes. The statistical analyses were performed using software R.

Correlations of median regional DBSI values with clinical test scores and subtypes were assessed using Spearman rank correlation analysis. The significance level was set at  $p \leq 0.05$  after Benjamini-Hochberg correction for multiple

**Figure 1** TBSS-based DBSI of normal-appearing corpus callosum revealed widespread abnormalities in fiber fraction, nonrestricted fraction, fractional anisotropy, and radial diffusivity compared with healthy controls



DBSI metrics in the three clinical subgroups of RRMS, PPMS, and SPMS were compared with healthy controls (HCs). Regions in red or blue represent regions with a significant increase or decrease in that diffusion metric in pwMS compared with HC, respectively. The proportion of the CC volumes that were significantly different from the HC group is indicated at the upper left corner of each map. In the figures, the TBSS skeleton was thickened for better visibility. CC = corpus callosum; DBSI = diffusion basis spectrum imaging; PPMS = primary progressive MS; pwMS = people with MS; RRMS = relapsing-remitting MS; SPMS = secondary progressive MS; TBSS = tract-based spatial statistics.

comparisons. Individual participants were considered as independent. HCs were excluded from analyses of dMRI correlations with clinical tests. The statistical analyses were performed using software R.

### Data availability

Anonymized data will be shared upon reasonable request.

## Results

### Clinical characteristics

The HC (n = 13), RRMS (n = 22), PPMS (n = 17), and SPMS (n = 16) subjects were similar in age (table 1). As expected, the RRMS cohort performed better on neurologic tests than subjects with PPMS, who performed better than subjects with SPMS on motor and cognitive tests (table 1).<sup>17,18</sup>

### Voxel-based assessments of NAWM in CC using DBSI metrics

DBSI-derived fiber fraction (indicator of apparent axonal density) was lower in a significantly larger percentage of voxels in the normal-appearing CC among all clinical MS subtypes, relative to HC, with variable spatial distributions. Overall, the median fiber fraction of the CC in HC subjects was 0.67 (table 2). RRMS and PPMS each had a slightly lower median overall fiber fraction (0.63 and 0.63, respectively) compared with HC (table 2). Subjects with SPMS had the lowest median fiber fraction of 0.57 (table 2). In addition, the spatial extent of reduced DBSI fiber fraction in the normal-appearing CC varied, with 75% of the normal-appearing CC being reduced in the SPMS cohort, 50% in the PPMS cohort, and 3% in the RRMS cohort (figure 1).

DBSI-derived nonrestricted isotropic fraction (indicator of tissue loss or edema) was significantly higher in the vast

majority of voxels in the normal-appearing CC of all 3 clinical subtype cohorts compared with HC (78%, 77%, and 98% for RRMS, PPMS, and SPMS subtypes, respectively, figure 1). Compared with HC, DBSI-derived restricted fraction (indicator of apparent cellularity) was lower in a significantly larger percentage of voxels of the normal-appearing CC in SPMS but not in RRMS or PPMS.

DBSI-derived FA (of residual fiber tracts) was reduced compared with HC in the normal-appearing CC, with this reduction encompassing variable proportions of the CC depending on the MS subtype (31%, 15%, and 45% in RRMS, PPMS, and SPMS, respectively). The spatial extent of voxels with reductions in FA were consistent with increased DBSI-derived RD covered 43%, 26%, and 47% of the normal-appearing CC in RRMS, PPMS, and SPMS, respectively (figure 1). No statistically significant changes in DBSI-AD were observed in the normal-appearing CC in any of the MS subtypes (table 2).

### Region-based DBSI metrics of the whole CC

The DBSI-derived metrics from the whole CC were extracted. The median values for the CC were compared among the MS clinical subgroups and to the values of HC (figure 2). Consistent with voxel-based analyses, the SPMS group was notable for having the most reduced fiber fraction and the most increased nonrestricted isotropic fraction of the MS subgroups.

### DBSI metrics of the normal-appearing CC correlate with cognitive and motor test scores in MS

Reduced DBSI fiber fraction correlated with worse cognitive test scores (figure 3). DBSI-derived nonrestricted isotropic fraction correlated negatively with cognitive test scores and

**Table 1** Clinical and test characteristics of HCs and the 3 cohorts of pwMS

	HC (n = 13)	RRMS (n = 22)	PPMS (n = 17)	SPMS (n = 16)
Sex (M/F)	7/6	7/15	5/12	3/13
Age	50.8 ± 12.4	53.0 ± 8.3	54.2 ± 10.7	56.7 ± 7.5
EDSS score	0 (0 to 0)	2.75 (2.00 to 3.38)	6 (4.50 to 6.50)	6 (5.25 to 6.50)
MSFC	0.61 (0.33 to 0.67)	0.44 (-0.12, 0.53)	-0.39 (-1.04 to 0.09)	-0.35 (-0.67 to -0.20)
PASAT3	0.29 (-0.15 to 0.52)	0.18 (-1.04 to 0.57)	-0.28 (-1.19 to 0.34)	-0.99 (-1.91 to 0.08)
PASAT2	-0.12 (-0.96 to 0.36)	-0.38 (-1.59 to 0.78)	-0.54 (-0.91 to 0.78)	-1.27 (-1.85 to -0.75)
9HPT	0.67 (0.26 to 1.01)	0.15 (-0.13 to 0.47)	-0.6 (-2.13 to 0.14)	-0.75 (-1.21 to -0.22)
25FTW	0.49 (0.43 to 0.50)	0.45 (0.38 to 0.49)	-0.09 (-0.35 to 0.11)	-0.12 (-0.67 to 0.09)
SDMT	0.18 (-0.38,0.55)	-0.9 (-1.36,-0.13)	-1.04 (-2.07,-0.66)	-2.02 (-2.74,-1.20)
BVMTR Tot	0.14 (-0.38 to 1.00)	0.05 (-0.64 to 0.66)	-0.55 (-2.10 to -0.21)	-0.98 (-2.28 to -0.38)
BVMTR Del	1.12 (-0.06 to 1.12)	0.53 (-0.65 to 0.53)	-0.06 (-0.65 to 0.53)	-1.24 (-3.15 to -0.65)
SRT Tot	-0.48 (-1.44 to 0.62)	-0.27 (-1.37 to 0.45)	-0.89 (-2.12 to -0.34)	-1.51 (-2.88 to -0.68)
SRT Del	-1.14 (-2.10 to 0.29)	-0.19 (-0.67 to 0.76)	-0.67 (-2.10 to -0.19)	-1.14 (-2.69 to -0.67)

Abbreviations: BVMTR = Brief Visuospatial Memory Test-Revised; EDSS = Expanded Disability Status Scale; FW = foot walk; HC = healthy control; HPT = Hole Peg Test; MSFC = Multiple Sclerosis Functional Composite; PASAT = paced auditory serial addition test; PPMS = primary progressive MS; RRMS = relapsing-remitting MS; SDMT = Symbol Digit Modalities Test; SPMS = secondary progressive MS; SRT = Selective Reminding Test.

with MSFC. Reduced isotropic restricted fraction had modest correlations with worse scores on some cognitive tests. DBSI-derived RD, AD, and FA showed minimal or no correlations with any clinical test results (figure 3). DBSI parameters from all subregions of the CC revealed correlations with cognitive test scores, but not with measures of physical function (figure 3, B–D). The only correlation between EDSS and any of the DBSI metrics was with the nonrestricted isotropic fraction and only in the SPMS group ( $r = -0.7$ ,  $p < 0.01$ , data not shown).

## Discussion

MRI studies have historically been very useful for the non-invasive diagnosis of MS and to better understand the changes over time in this chronic disease. MRI has been increasingly

used to assess the relationship between the distribution and extent of pathology in the MS CNS and neurologic impairment. However, correlations of T2-weighted brain MRI abnormalities with neurologic impairment in MS are weak.<sup>19</sup> At least part of this lack of correlation is due to the nonspecific nature of abnormalities seen on standard MRI modalities.<sup>19</sup> This is especially true in progressive MS, where CNS inflammation becomes dissociated from BBB damage such that gadolinium enhancement is far less useful to detect it.<sup>20,21</sup>

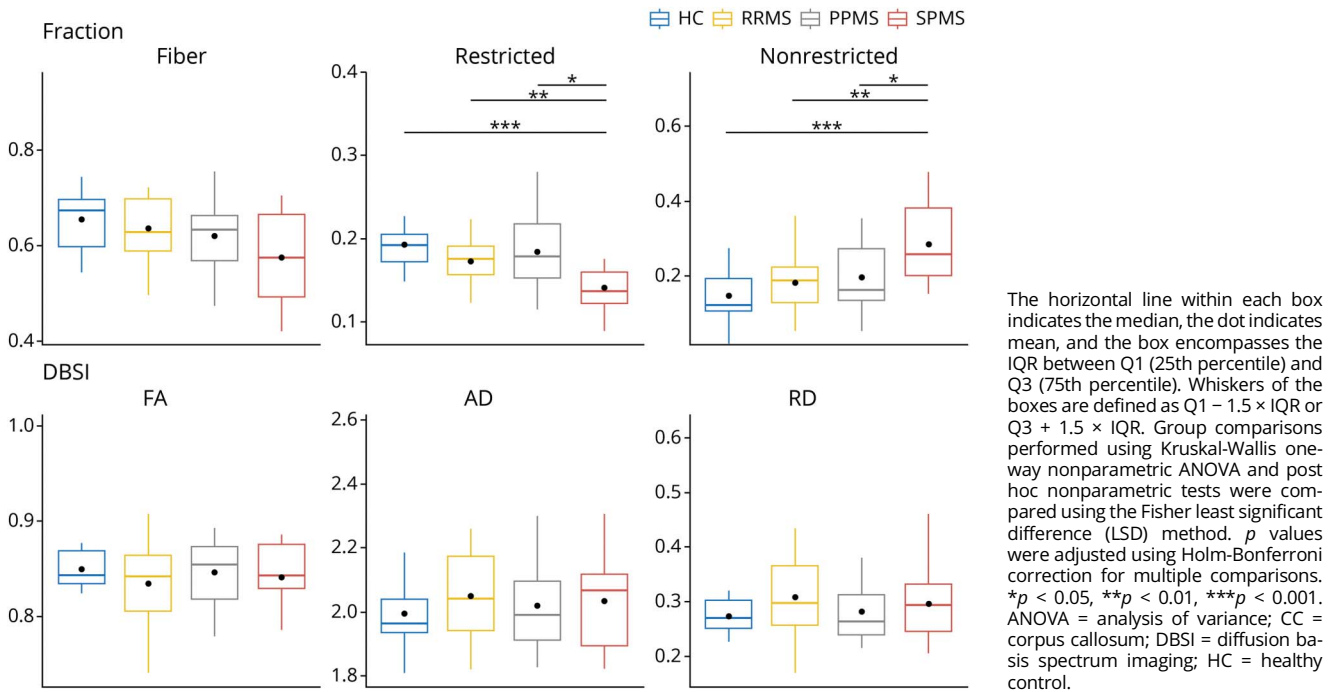
In this study, the main goal was to use DBSI, which is pathologically more specific than standard MRI, to help understand how damage to NAWM in the CC influences neurologic disability in MS. Subjects of each of the 3 main clinical subtypes were recruited to be of similar ages so that

**Table 2** DBSI metrics within normal-appearing corpus callosum suggest axonal loss in patients with MS

	HC (n = 13)	RRMS (n = 22)	PPMS (n = 17)	SPMS (n = 16)
Fiber fraction	0.67 (0.60–0.69)	0.63 (0.59–0.70)	0.63 (0.57–0.66)	0.57 (0.49–0.67)
Restricted fraction	0.19 (0.17–0.20)	0.18 (0.16–0.19)	0.18 (0.15–0.22)	0.14 (0.12–0.16)
Nonrestricted fraction	0.12 (0.11–0.19)	0.19 (0.13–0.22)	0.16 (0.14–0.27)	0.26 (0.20–0.38)
DBSI FA	0.84 (0.83–0.87)	0.84 (0.81–0.86)	0.85 (0.82–0.87)	0.84 (0.83–0.87)
DBSI AD	1.96 (1.93–2.04)	2.04 (1.94–2.17)	1.99 (1.91–2.10)	2.06 (1.89–2.12)
DBSI RD	0.27 (0.25–0.30)	0.30 (0.26–0.37)	0.26 (0.24–0.31)	0.29 (0.24–0.33)

Abbreviations: AD = axial diffusivity; HC = healthy control; FA = fractional anisotropy; PPMS = primary progressive MS; RD = radial diffusivity; RRMS = relapsing-remitting MS; SPMS = secondary progressive MS.

**Figure 2** Comparisons of DBSI parameters within normal-appearing CC among HC and MS clinical subtypes



age-related pathologic findings would not be a confounding factor. Patients with SPMS have more damage and less remyelination and a greater brain lesion load compared with patients with PPMS.<sup>22</sup> People with RRMS are considered to have the least axon loss, although neuropathologic confirmation of this is sparse.<sup>23</sup> The motor and cognitive test results on our 3 patient cohorts reflected the expected hierarchy, with subjects with SPMS performing worst, subjects with RRMS performing best, and subjects with PPMS scoring in between on the tests. We had hypothesized that axon damage in NAWM, as detected by DBSI, would correlate with worse scores on clinical tests of functions most often impaired in pwMS. We found that reduced fiber fraction and increased nonrestricted isotropic fraction correlated with cognitive dysfunction and, to a far lesser extent, motor impairment. As the fiber fraction reflects the apparent axonal density, and the nonrestricted isotropic fraction is increased in regions of axon fiber loss, the DBSI results supported our hypothesis. The results indicated abnormalities in the NAWM of the CC in pwMS suggesting loss of axons and also reflected the expected hierarchy of severity among MS subtypes.

As MS treatments become greater in number and as the field moves toward reparative therapies, it is increasingly important to elucidate the presence of preserved but demyelinated axons to identify those pwMS who can best respond to potential remyelinating therapies. Increased DBSI RD, reflecting demyelination of surviving axons, suggested that 26–47% of NAWM of the CC in our MS cohort was demyelinated. Enrollment of subjects with much demyelination and relative

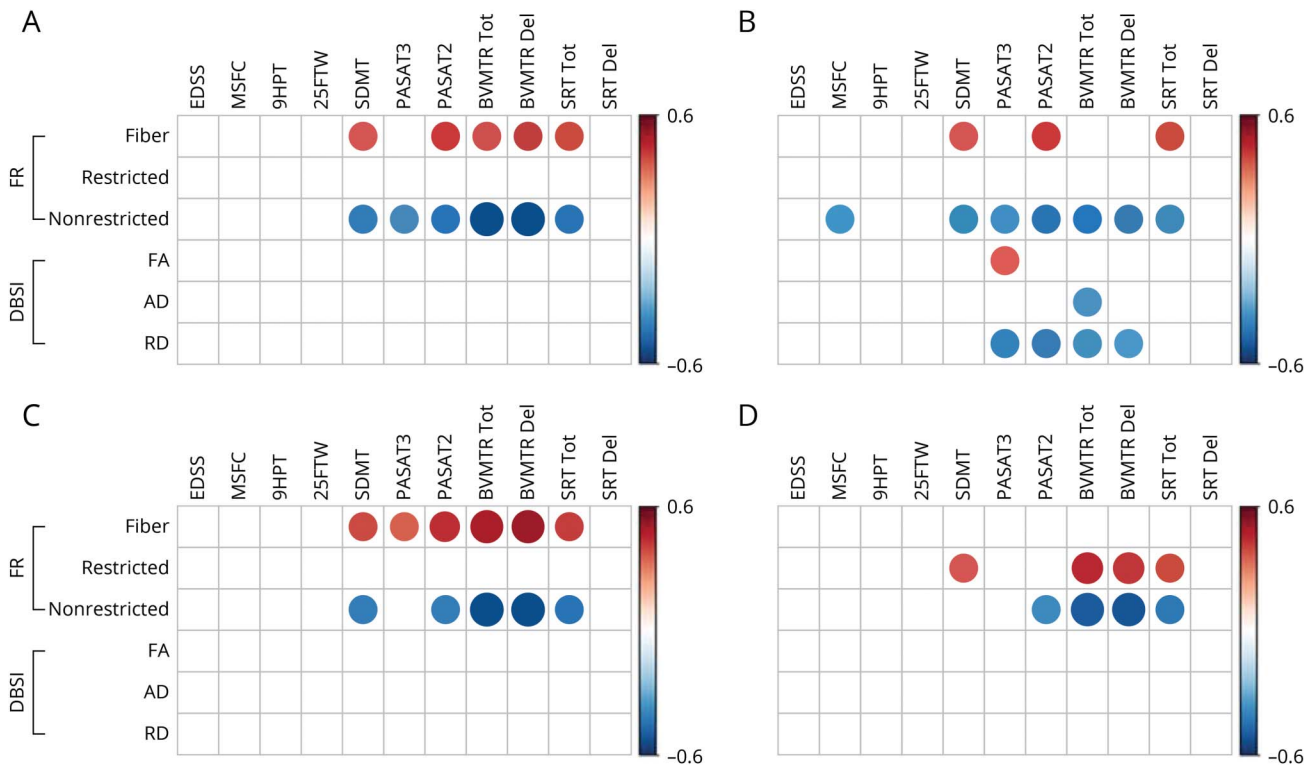
axon sparing, as could be shown by DBSI metrics, would enhance the ability to detect efficacy in future trials of putative remyelinating agents. Identification of those who would benefit most from remyelination treatments might be further improved by application of DBSI to other major WM tracts beyond the CC, such as the internal capsules, cerebral peduncles, and centrum semiovale regions, which we plan to do in future studies.

DTI has been used previously to investigate pathologic changes in the NAWM.<sup>24,25</sup> However, DTI findings are confounded by coexisting pathologies, making it pathologically less specific than DBSI.<sup>12</sup> DTI works better when studying strongly coherent WM tracts, such as mouse models of MS and human optic neuritis. Studying these tracts, reduced AD determined by DTI was associated with pathologically verified axon injury in mice and worse outcomes in humans.<sup>26,27</sup>

In the present study, we focused on the normal-appearing CC. We assessed not only the degree of alteration of each DBSI metric but also the volume of abnormal tissue within the non-lesioned CC. The volume of abnormal tissue (compared with a healthy cohort) within the normal-appearing CC reached 77%–98% for nonrestricted isotropic fraction in all 3 clinical subtypes. These results likely reflect the well-known finding that in pwMS, NAWM is often not normal.<sup>30</sup> Notably, reduced axon density in the normal-appearing CC has been shown by several groups using MR spectroscopy in living people with RRMS and progressive MS.<sup>28</sup> In the present studies, decreased DBSI fiber



**Figure 3** Graphic illustration of correlation coefficients of clinical test scores with DBSI metrics from the normal-appearing CC



Graphic illustration of the correlations in MS subjects of clinical test scores (columns) with individual DBSI metrics from the normal-appearing CC (rows) for the (A) entire CC, (B) genu, (C) body, and (D) splenium. Red circles have a positive correlation, and blue circles have a negative correlation with test scores, with the size of the circle reflecting the magnitude of the correlation. Data are only shown when the corresponding significant level is  $p < 0.05$ , after Benjamini-Hochberg correction for multiple comparisons. CC = corpus callosum; DBSI = diffusion basis spectrum imaging; Fr = fraction.

fraction (putative marker of apparent axonal density, figure 1) was seen most extensively in SPMS, followed by PPMS then RRMS, consistent with the accepted hierarchy of severity of axon loss among MS subtypes.<sup>29</sup>

Axonal loss is believed to be a critical mechanism of irreversible neurologic disability.<sup>30–32</sup> Thus, it was not surprising that fiber fraction, as a surrogate of axon density, correlated with disability in pwMS (table 1, median of EDSS: RRMS 2.75, PPMS 6, and SPMS 6).

Cognitive impairment affects 40%–70% of pwMS and has substantial negative consequences.<sup>33–35</sup> Although motor deficits are the principal measures for disease severity scales,<sup>36</sup> cognitive impairment is the strongest predictor of work reduction or leaving the workforce.<sup>37</sup> Previous studies using DTI also revealed WM tract injury to be strongly associated with cognitive dysfunction in patients with MS.<sup>24,38,39</sup> Focal abnormalities, particularly in the CC, have been related to impaired calculation, sequence learning, and memory.<sup>24,40–44</sup> It was not unsurprising that abnormal fiber fraction and nonrestricted isotropic fraction correlated best with impaired cognitive performance in our studies, as they are thought to reflect axonal loss and loss of tissue integrity, respectively.

Previous attempts to correlate DTI metrics with the EDSS yielded conflicting results, with some studies finding significant correlation<sup>45–47</sup> and others not.<sup>48</sup> We only observed a correlation between the DBSI and EDSS for the nonrestricted isotropic fraction and only in the SPMS group. We surmise that the inability to find correlations with the EDSS is due to the dependency of the EDSS on ambulation, and we expect to see much greater correlations with the EDSS when in the future we extend DBSI to the spinal cord.

Limitations to our study include that the number of pwMS enrolled was only 55. The subjects who were enrolled had well-defined clinical subtypes and were of similar mean ages. However, our RRMS cohort was older than a typical RRMS cohort, perhaps resulting in a “benign” group of subjects with RRMS in this study. Another limitation relates to the TBSS methodology. TBSS assumes that the effect of interest occurs in voxels where the local FA is highest and thus may lose sensitivity in detecting pathologic changes in areas of low FA.<sup>49</sup>

In summary, we used DBSI to assess NAWM integrity within the CC in RRMS, SPMS, and PPMS cohorts. The DBSI metric that best indicates axonal loss (fiber fraction) reflected the expected hierarchy of axonal loss among clinical subtypes.

Fiber fraction also correlated with cognitive test results. DBSI might be useful for quantitatively monitoring the CNS of individual pwMS, as an outcome measure in clinical trials and as an aid in recruiting appropriate subjects for future trials of potential neuroreparative MS therapies.

## Acknowledgment

The authors appreciate the contributions to subject clinical examinations by Drs. Erin Longbrake, Afsaneh Shirani, Emily Evans, and Gregory Wu, and Megan Orchard, PA.

## Study funding

Supported by the NIH P01 NS059560.

## Disclosure

P. Sun, D.C. Perantie, A. George, Z. Ye, and K. Trinkaus report no disclosures. R.T. Naismith consulted for Alkermes, Acorda, Bayer, Biogen, EMD Serono, Genentech, Genzyme, Mallinckrodt, Novartis, Pfizer, Teva, and TG Therapeutics. S.-K. Song reports no disclosures. A.H. Cross consulted for Biogen, Celgene, EMD Serono, Genentech/Roche, Novartis, and TG Therapeutics. Go to [Neurology.org/NN](http://Neurology.org/NN) for full disclosures.

## Publication history

Received by *Neurology: Neuroimmunology & Neuroinflammation* June 24, 2019. Accepted in final form November 4, 2019.

## Appendix Authors

Name	Location	Role	Contribution
<b>Peng Sun, PhD</b>	Washington University, St Louis, MO	Author	Conception and design of the study, acquisition and analysis of the data, and writing of the manuscript
<b>Ajit George, PhD</b>	Washington University, St Louis, MO	Author	Design of the study, acquisition and analysis of the data, and writing of the manuscript
<b>Dana C. Perantie, MPH</b>	Washington University, St Louis, MO	Author	Acquisition of the clinical data, lesion mapping, and revisions to the manuscript
<b>Kathryn Trinkaus, PhD</b>	Washington University, St Louis, MO	Author	Statistical analysis and contributed to the writing of the manuscript
<b>Ze Zhong Ye, PhD</b>	Washington University, St Louis, MO	Author	Data analysis and writing of the manuscript
<b>Robert T. Naismith, MD</b>	Washington University, St Louis, MO	Author	Provided critical revisions to the manuscript
<b>Sheng-Kwei Song, PhD</b>	Washington University, St Louis, MO	Author	Conception and design of the study and critical revisions to the manuscript
<b>Anne H. Cross, MD</b>	Washington University, St Louis, MO	Author	Conception and design of the study, writing of the manuscript and critical revisions to the manuscript, and acquired study funding

## References

- Wallin MT, Culpepper WJ, Campbell JD, et al. The prevalence of MS in the United States: a population-based estimate using health claims data. *Neurology* 2019;92:e1029–e1040.
- Paty DW, Li DK, Oger JJ, et al. Magnetic resonance imaging in the evaluation of clinical trials in multiple sclerosis. *Ann Neurol* 1994;36(suppl):S95–S96.
- Wang Y, Wang Q, Haldar JP, et al. Quantification of increased cellularity during inflammatory demyelination. *Brain* 2011;134:3590–3601.
- Wang Y, Sun P, Wang Q, et al. Differentiation and quantification of inflammation, demyelination and axon injury or loss in multiple sclerosis. *Brain* 2015;138:1223–1238.
- Lin TH, Chiang CW, Perez-Torres CJ, et al. Diffusion MRI quantifies early axonal loss in the presence of nerve swelling. *J Neuroinflammation* 2017;14:78.
- Evangelou N, Konz D, Esiri MM, Smith S, Palace J, Matthews PM. Regional axonal loss in the corpus callosum correlates with cerebral white matter lesion volume and distribution in multiple sclerosis. *Brain* 2000;123:1845–1849.
- Smith SM, Jenkinson M, Johansen-Berg H, et al. Tract-based spatial statistics: voxelwise analysis of multi-subject diffusion data. *Neuroimage* 2006;31:1487–1505.
- Lublin FD, Reingold SC, Cohen JA, et al. Defining the clinical course of multiple sclerosis: the 2013 revisions. *Neurology* 2014;83:278–286.
- Strober L, Englert J, Munschauer F, Weinstock-Guttman B, Rao S, Benedict RH. Sensitivity of conventional memory tests in multiple sclerosis: comparing the Rao brief repeatable neuropsychological battery and the minimal assessment of cognitive function in MS. *Mult Scler* 2009;15:1077–1084.
- Smith SM, Jenkinson M, Woolrich MW, et al. Advances in functional and structural MR image analysis and implementation as FSL. *Neuroimage* 2004;23(suppl 1):S208–S219.
- Wang X, Cusick MF, Wang Y, et al. Diffusion basis spectrum imaging detects and distinguishes coexisting subclinical inflammation, demyelination, and axonal injury in experimental autoimmune encephalomyelitis mice. *NMR Biomed* 2014;27:843–852.
- Chiang CW, Wang Y, Sun P, et al. Quantifying white matter tract diffusion parameters in the presence of increased extra-fiber cellularity and vasogenic edema. *Neuroimage* 2014;101:310–319.
- Andersson JLR, Jenkinson M, Smith S. Non-linear registration aka spatial normalisation. *FMRIB Technical Report TR07JA2*. Oxford: FMRIB Centre; 2007.
- Smith SM, Nichols TE. Threshold-free cluster enhancement: addressing problems of smoothing, threshold dependence and localisation in cluster inference. *Neuroimage* 2009;44:83–98.
- Winkler AM, Ridgway GR, Webster MA, Smith SM, Nichols TE. Permutation inference for the general linear model. *Neuroimage* 2014;92:381–397.
- Mori S, Wakana S, Van Zijl PCM. *MRI Atlas of Human White Matter*. 1st ed. The Netherlands: Elsevier; 2005:239.
- Huijbregts SC, Kalkers NF, de Sonneville LM, de Groot V, Polman CH. Cognitive impairment and decline in different MS subtypes. *J Neurol Sci* 2006;245:187–194.
- Confavreux C, Vukusic S. The clinical course of multiple sclerosis. *Handb Clin Neurol* 2014;122:343–369.
- Barkhof F. MRI in multiple sclerosis: correlation with expanded disability status scale (EDSS). *Mult Scler* 1999;5:283–286.
- Lassmann H, van Horssen J, Mahad D. Progressive multiple sclerosis: pathology and pathogenesis. *Nat Rev Neurol* 2012;8:647–656.
- Kwon EE, Prineas JW. Blood-brain barrier abnormalities in longstanding multiple sclerosis lesions. An immunohistochemical study. *J Neuropathol Exp Neurol* 1994;53:625–636.
- Revesz T, Kidd D, Thompson AJ, Barnard RO, McDonald WI. A comparison of the pathology of primary and secondary progressive multiple sclerosis. *Brain* 1994;117:759–765.
- De Stefano N, Matthews PM, Fu L, et al. Axonal damage correlates with disability in patients with relapsing-remitting multiple sclerosis. Results of a longitudinal magnetic resonance spectroscopy study. *Brain* 1998;121:1469–1477.
- Yu HJ, Christodoulou C, Bhise V, et al. Multiple white matter tract abnormalities underlie cognitive impairment in RRMS. *Neuroimage* 2012;59:3713–3722.
- Kern KC, Sarcona J, Montag M, Giesser BS, Sciotte NL. Corpus callosal diffusivity predicts motor impairment in relapsing-remitting multiple sclerosis: a TBSS and tractography study. *Neuroimage* 2011;55:1169–1177.
- Budde MD, Xie M, Cross AH, Song SK. Axial diffusivity is the primary correlate of axonal injury in the experimental autoimmune encephalomyelitis spinal cord: a quantitative pixelwise analysis. *J Neurosci* 2009;29:2805–2813.
- Naismith RT, Xu J, Tutlam NT, et al. Diffusion tensor imaging in acute optic neuropathies: predictor of clinical outcomes. *Arch Neurol* 2012;69:65–71.
- Oh J, Pelletier D, Nelson SJ. Corpus callosum axonal injury in multiple sclerosis measured by proton magnetic resonance spectroscopic imaging. *Arch Neurol* 2004;61:1081–1086.
- Evangelou N, Esiri MM, Smith S, Palace J, Matthews PM. Quantitative pathological evidence for axonal loss in normal appearing white matter in multiple sclerosis. *Ann Neurol* 2000;47:391–395.
- Kornek B, Storch MK, Weisert R, et al. Multiple sclerosis and chronic autoimmune encephalomyelitis: a comparative quantitative study of axonal injury in active, inactive, and remyelinated lesions. *Am J Pathol* 2000;157:267–276.
- Medana IM, Esiri MM. Axonal damage: a key predictor of outcome in human CNS diseases. *Brain* 2003;126:515–530.
- Wujek JR, Bjartmar C, Richer E, et al. Axon loss in the spinal cord determines permanent neurological disability in an animal model of multiple sclerosis. *J Neuropathol Exp Neurol* 2002;61:23–32.

33. Rocca MA, Amato MP, De Stefano N, et al. Clinical and imaging assessment of cognitive dysfunction in multiple sclerosis. *Lancet Neurol* 2015;14:302–317.
34. Chiaravalloti ND, DeLuca J. Cognitive impairment in multiple sclerosis. *Lancet Neurol* 2008;7:1139–1151.
35. Ruet A, Deloire M, Hamel D, Ouallet JC, Petry K, Brochet B. Cognitive impairment, health-related quality of life and vocational status at early stages of multiple sclerosis: a 7-year longitudinal study. *J Neurol* 2013;260:776–784.
36. Kurtzke JF. Rating neurologic impairment in multiple sclerosis: an expanded disability status scale (EDSS). *Neurology* 1983;33:1444–1452.
37. Morrow SA, Drake A, Zivadinov R, Munschauer F, Weinstock-Guttman B, Benedict RH. Predicting loss of employment over three years in multiple sclerosis: clinically meaningful cognitive decline. *Clin Neuropsychol* 2010;24:1131–1145.
38. Vrenken H, Pouwels PJW, Geurts JJG, et al. Altered diffusion tensor in multiple sclerosis normal-appearing brain tissue: cortical diffusion changes seem related to clinical deterioration. *J Magn Reson Imaging* 2006;23:628–636.
39. Rovaris M, Iannucci G, Falautano M, et al. Cognitive dysfunction in patients with mildly disabling relapsing-remitting multiple sclerosis: an exploratory study with diffusion tensor MR imaging. *J Neurol Sci* 2002;195:103–109.
40. Llufriu S, Blanco Y, Martinez-Heras E, et al. Influence of corpus callosum damage on cognition and physical disability in multiple sclerosis: a multimodal study. *PLoS One* 2012;7:e37167.
41. Audoin B, Guye M, Reuter F, et al. Structure of WM bundles constituting the working memory system in early multiple sclerosis: a quantitative DTI tractography study. *Neuroimage* 2007;36:1324–1330.
42. Roosendaal SD, Geurts JJG, Vrenken H, et al. Regional DTI differences in multiple sclerosis patients. *NeuroImage* 2009;44:1397–1403.
43. Lin X, Tench CR, Morgan PS, Constantinescu CS. Use of combined conventional and quantitative MRI to quantify pathology related to cognitive impairment in multiple sclerosis. *J Neurol Neurosurg Psychiatry* 2008;79:437–441.
44. Mesaros S, Rocca MA, Riccitelli G, et al. Corpus callosum damage and cognitive dysfunction in benign MS. *Hum Brain Mapp* 2009;30:2656–2666.
45. Liu Y, Duan Y, He Y, et al. Whole brain white matter changes revealed by multiple diffusion metrics in multiple sclerosis: a TBSS study. *Eur J Radiol* 2012;81:2826–2832.
46. Giorgio A, De Stefano N. Cognition in multiple sclerosis: relevance of lesions, brain atrophy and proton MR spectroscopy. *Neurol Sci* 2010;31:S245–S248.
47. Ciccarelli O, Wheeler-Kingshott CA, McLean MA, et al. Spinal cord spectroscopy and diffusion-based tractography to assess acute disability in multiple sclerosis. *Brain* 2007;130:2220–2231.
48. Fink F, Klein J, Lanz M, et al. Comparison of diffusion tensor-based tractography and quantified brain atrophy for analyzing demyelination and axonal loss in MS. *J Neuroimaging* 2010;20:334–344.
49. Bach M, Laun FB, Leemans A, et al. Methodological considerations on tract-based spatial statistics (TBSS). *Neuroimage* 2014;100:358–369.

# Neurology® Neuroimmunology & Neuroinflammation

**Diffusion basis spectrum imaging provides insights into MS pathology**

Peng Sun, Ajit George, Dana C. Perantie, et al.

*Neurol Neuroimmunol Neuroinflamm* 2020;7;

DOI 10.1212/NXI.0000000000000655

**This information is current as of December 23, 2019**

*Neurol Neuroimmunol Neuroinflamm* is an official journal of the American Academy of Neurology. Published since April 2014, it is an open-access, online-only, continuous publication journal. Copyright © 2019 The Author(s). Published by Wolters Kluwer Health, Inc. on behalf of the American Academy of Neurology.. All rights reserved. Online ISSN: 2332-7812.



<b>Updated Information &amp; Services</b>	including high resolution figures, can be found at: <a href="http://nn.neurology.org/content/7/2/e655.full.html">http://nn.neurology.org/content/7/2/e655.full.html</a>
<b>References</b>	This article cites 46 articles, 2 of which you can access for free at: <a href="http://nn.neurology.org/content/7/2/e655.full.html##ref-list-1">http://nn.neurology.org/content/7/2/e655.full.html##ref-list-1</a>
<b>Subspecialty Collections</b>	This article, along with others on similar topics, appears in the following collection(s): <b>All Demyelinating disease (CNS)</b> <a href="http://nn.neurology.org/cgi/collection/all_demyelinating_disease_cns">http://nn.neurology.org/cgi/collection/all_demyelinating_disease_cns</a> <b>Clinical neurology examination</b> <a href="http://nn.neurology.org/cgi/collection/clinical_neurology_examination">http://nn.neurology.org/cgi/collection/clinical_neurology_examination</a>  <b>DWI</b> <a href="http://nn.neurology.org/cgi/collection/dwi">http://nn.neurology.org/cgi/collection/dwi</a> <b>MRI</b> <a href="http://nn.neurology.org/cgi/collection/mri">http://nn.neurology.org/cgi/collection/mri</a> <b>Multiple sclerosis</b> <a href="http://nn.neurology.org/cgi/collection/multiple_sclerosis">http://nn.neurology.org/cgi/collection/multiple_sclerosis</a>
<b>Permissions &amp; Licensing</b>	Information about reproducing this article in parts (figures, tables) or in its entirety can be found online at: <a href="http://nn.neurology.org/misc/about.xhtml#permissions">http://nn.neurology.org/misc/about.xhtml#permissions</a>
<b>Reprints</b>	Information about ordering reprints can be found online: <a href="http://nn.neurology.org/misc/addir.xhtml#reprintsus">http://nn.neurology.org/misc/addir.xhtml#reprintsus</a>

*Neurol Neuroimmunol Neuroinflamm* is an official journal of the American Academy of Neurology. Published since April 2014, it is an open-access, online-only, continuous publication journal. Copyright Copyright © 2019 The Author(s). Published by Wolters Kluwer Health, Inc. on behalf of the American Academy of Neurology.. All rights reserved. Online ISSN: 2332-7812.

