



UNIVERSITÀ
DEGLI STUDI
DI PADOVA

Università degli Studi di Padova

Padua Research Archive - Institutional Repository

Surgical strategies for lymphocele prevention in minimally-invasive radical prostatectomy and lymph-node dissection: a systematic review

Original Citation:

Availability:

This version is available at: 11577/3318823 since: 2020-03-21T14:51:36Z

Publisher:

Published version:

DOI: 10.1089/end.2019.0716

Terms of use:

Open Access

This article is made available under terms and conditions applicable to Open Access Guidelines, as described at <http://www.unipd.it/download/file/fid/55401> (Italian only)

(Article begins on next page)

Title: Surgical strategies for lymphocele prevention in minimally-invasive radical prostatectomy and lymph-node dissection: a systematic review

Running title: lymphocele prevention during prostatectomy

Authors: Motterle Giovanni^{1,2}; Morlacco Alessandro¹; Zanovello Nicola¹, Ahmed Mohamed E.², Zattoni Filiberto¹; Karnes Robert Jeffrey²; Dal Moro Fabrizio¹

¹ Dipartimento di Scienze Oncologiche, Chirurgiche e Gastroenterologiche – UOC Urologia – Università degli Studi di Padova; Padova (Italy)

² Department of Urology – Mayo Clinic; Rochester, MN (U.S.A.)

Abstract word count: 201; **Manuscript Word Count:** 3027; **Tables:** 3; **Figures:** 1; **References:** 40; **Supplementary Material:** 0

Keywords: lymph node dissection; lymphocele; prostate cancer; prostatectomy;

Funding: None;

Conflicts of interest: None of the authors have any relevant disclosures, and none of the authors have any financial or non-financial interests that may be relevant to the submitted work;

Acknowledgments: None

Corresponding author: Alessandro Morlacco, M.D., FEBU - Dipartimento di Scienze Oncologiche, Chirurgiche e Gastroenterologiche – UOC Urologia – Università degli Studi di Padova; Padova (Italy). Phone: +390498218599 – Fax +390498218757 – e-mail: alessandro.morlacco@unipd.it

Abstract:

Purpose: Pelvic lymph node dissection (PLND) is an important step during robotic radical prostatectomy (RARP). The collection of lymphatic fluid (lymphocele) is the most common complication with potentially severe impact; therefore different strategies have been proposed to reduce its incidence.

Material and methods: In this systematic review EMBASE, MEDLINE, Cochrane Library and NIH Registry of Clinical Trials were searched for papers including the following interventions: transperitoneal vs extraperitoneal approach, any reconfiguration of the peritoneum, the use of pelvic drains and the use of different sealing techniques and sealing agents. The outcome evaluated was the incidence of symptomatic lymphocele. Both randomized and non-randomized and/or retrospective studies.

Results: Twelve studies were included (including one ongoing RCT). Due to the heterogeneity of included studies no meta-analysis was performed. No significant impact was reported by different sealing techniques and agents or by surgical approach. Three retrospective, non-randomized studies showed a potential benefit of peritoneal reconfiguration in order to maximize the peritoneal surface of reabsorption.

Conclusion: Lymphocele formation is a multi-step and multifactorial event, high quality literature analyzing risk factors and preventive measures is rather scarce. Peritoneal reconfiguration could represent a reasonable option that deserves further evaluation; no other preventive measure is supported by current evidence.

Background

Extended pelvic lymph node dissection (PLND) at time of radical prostatectomy is a procedure with controversial survival benefit but with pivotal role in providing staging and prognostic information [1]. European Urology Association (EAU) guidelines recommend performing an extended pelvic lymph node dissection (intended as removing lymphatic tissue covering the external iliac vessels, in the obturator fossa and both medially and laterally to the internal iliac artery) when the estimate risk of lymph node metastasis is at least 5%[2].

Description of the condition

Lymphocele can be defined as a collection of lymphatic fluid without an epithelial lining [3]. It is usually a surgical complication following the disruption of lymphatic vessels. Although lymphocele after radical prostatectomy seems directly attributable to pelvic lymph node dissection [4] its true incidence is difficult to estimate because most lymphoceles occur asymptotically and there is no standard screening procedure after prostatectomy. When considering symptomatic lymphocele, incidence has been reported between 0 to 8% [5].

A lymphocele can become symptomatic because of superinfection of the lymphatic fluid (causing pain, fever and/or sepsis) or because of the compression on adjacent structures; the latter event can result in abdominal discomfort or venous drainage impairment leading to lower limb edema, deep venous thrombosis and/or pulmonary embolism. Lymphocele, even when asymptomatic, might also affect radiation therapy planning [6].

Lymphocele is the most frequent complication following radical prostatectomy[5] and many potential risk factors have already been reviewed by Lee and colleagues[7]: many of them are indeed non-modifiable elements such as patient age[8], comorbidities[9], surgeon experience[10] and lymph node involvement [11,12].

The current literature strongly supports the idea that the extent of PLND should not be guided by the aim of preventing lymphocele formation but rather by the purpose of

improving oncologic outcomes. Additionally, studies comparing lymphocele incidence in extended vs standard templates showed controversial results regarding the theoretical increasing risk of lymphocele with extended dissection [8,4,13].

Similar considerations can be made regarding the role of prophylactic anticoagulation (LMWH, low molecular weight heparin) where guidelines already defined its role in the setting of minimally invasive radical prostatectomy[14] and the expected benefits in TVP/PE reduction should outweigh the potential increased risk of lymphocele [15-17].

In this systematic review we aim to analyze intraoperative strategies that can be applied at time of minimally-invasive surgery to reduce the risk of symptomatic lymphocele.

Description of the interventions

Transperitoneal vs Extraperitoneal approach

Experiences from open radical prostatectomy suggest that there could be a benefit from transperitoneal approach because of the wider surface for lymphatic fluid reabsorption offered by the peritoneum [18,12]. Porpiglia and Chung found lower incidences of symptomatic lymphocele in the transperitoneal approach compared to the extraperitoneal, although methodological considerations impaired the inclusion of these studies in our analysis [19,20]. The rationale and benefit of peritoneal fenestration is confirmed also in a recent meta-analysis in the setting of kidney transplantation [21].

Peritoneum Reconfiguration

With the same rationale noted above, it was observed that even when the transperitoneal approach is used, the incidence of lymphoceles is still significant [5] and this is thought to be caused by the early adherence of the perivescical fat to the lymph node dissection bed when the pneumoperitoneum is released, thus jeopardizing the potential advantages originating from the peritoneum opening [22]. Some authors have then investigated the efficacy of interventions aimed to delay the spontaneous closure of the peritoneal wall.

Pelvic Drains

Pelvic drains are used to ensure drainage of blood, urine and lymph from the surgical bed. With the diffusion of minimally invasive techniques, where magnification of the image facilitates accurate suturing and detection of urine and blood spillage, there is a debate on whether drainage can be safely omitted [23,24] but other studies show that in the setting of RRP, higher lymphocele rates were found when drains were removed early or completely omitted compared to 7 days of drainage [12]. A large retrospective series of patients undergoing PLND at the time of either RRP or LRP reported in the multivariate analysis that symptomatic lymphocele was associated with the number of nodes removed and use of LMWH, but not with the number drains placed (1 vs 2) [17].

A Cochrane review updated in 2014 found that drainage of surgical field after PLND performed for gynecological cancer was not effective in preventing lymphocele and in particular, when the peritoneum was left open, the presence of drain was even associated to an increased risk [25].

Ligation Techniques and Hemostatic Agents

It is intuitive that meticulous dissection and ligation of lymphatic vessels is mandatory to reduce the risk of lymphocele. Various agents and techniques to facilitate this aim are available and currently used at surgeon's discretion. Fibrin sealants are widely used to maximize hemostasis based on their interaction on coagulation cascade. Some of these agents have been investigated in order to assess their ability to prevent lymphocele formation with a mechanism thought to be due to the mechanical compression with a lymphostatic effect or a direct effect of the presence of coagulation cascade components in the lymphatic fluid. A meta-analysis of randomized controlled trials including patients who underwent lymph node dissection for gynecological malignancies found no differences in overall and symptomatic lymphocele rates in groups where fibrin collagen agents were used vs standard technique (OR 0.61 95% CI 0.36 to 1.05 p = 0.08 and OR 0.59 95% CI 0.26 to 1.35 p = 0.22, respectively) but showed a decreased duration and volume of lymphatic drainage[26]. Inguinal lymph node dissection is a procedure known by urologists for penile cancer but it is also performed for melanoma: in this setting a recent meta-

analysis showed no improvement in terms of duration of drain placement, total drained volume and wound related complication with the use of tissue sealants [27].

Methods

Methods and results of the current review are presented following the PRISMA guidelines[28].

RCTs, cohort studies and case control studies were considered. Cross-sectional studies and case reports were excluded because of their statistical inadequacy for an accurate statistical assessment of risk factors and outcomes. Participants were patients who underwent pelvic lymphadenectomy with any template as part of their surgical treatment for prostate cancer performed with a robot-assisted or laparoscopic technique. At least seven postoperative days of follow-up were considered reasonable for detecting lymphocele. Authors evaluated all the interventions that can be performed at time of surgery to prevent lymphocele formation including the extraperitoneal vs transperitoneal approach, any reconfiguration of the peritoneum, the use of pelvic drains or the use of any ligation technique or hemostatic agent. Outcomes evaluated were the incidence of significant lymphocele intended as any lymphocele of diameter 3cm or greater or any symptomatic lymphocele. Expecting different definitions for symptomatic lymphocele, inclusion criteria were met when the study methodology clearly described abdominal or pelvic symptoms related to lymphocele or DVT-related symptoms (including Clavien-Dino grade I or greater) or any required intervention, including antibiotic treatment, surgical or percutaneous drainage.

A comprehensive search of terms (prostate cancer, prostatectomy, lymphocele, pelvic lymphadenectomy, complications) in EMBASE, MEDLINE, Cochrane Library and NIH Registry of Clinical Trials from 1980 up to January 31th 2019 was performed. All languages were included in the primary selection. Other sources of literature were not considered in this study.

Two authors (GM and AM) undertook the study selection screening the titles and abstracts of articles found in the search and discarding those which did not meet the eligibility criteria. Full-text copies of the eligible articles were obtained. Both review authors

independently assessed whether the studies met the inclusion criteria, with disagreements resolved by discussion. For each included study, information regarding the location of the study, methods of the study, the participants (age range, eligibility criteria), the nature of the interventions and data relating to the outcomes specified above were collected.

Risk of bias for randomized clinical trials was assessed through the Cochrane Collaboration tools [29] and summarized in Table 2. For non-randomized study bias was assessed through the Newcastle-Ottawa Scale [30] and summarized in Table 3.

Extracted data were judged by authors to be inappropriate for pooled analysis due to the low quality and heterogeneity of the studies, thus no meta-analysis was performed.

Results

After removing duplicates, 220 studies were evaluated and after screening of abstracts and titles 56 full text articles were obtained; 44 of them did not meet the inclusion criteria leaving 12 studies (including 1 ongoing randomized trial) in the final analysis.

The study selection process is summarized in Figure 1 showing the PRISMA flow chart.

Characteristics of included studies are shown in Table 1.

Effects of the interventions

Transperitoneal vs Extraperitoneal

A large (n=671 pairs), propensity-matched approach and prospectively maintained cohort of patients undergoing robotic PLND either with extraperitoneal (eRARP) or transperitoneal (tRARP) approach were compared in terms of rates of symptomatic lymphocele[31]; patients on the tRARP group had higher T stage (p=0.0015), higher incidence of N+ disease (p=0.0002) and number of LN removed (p<0.0001). No differences in symptomatic lymphocele were found between the groups [e-RARP 19/671 (2.83%) vs t-RARP 10/671 (1.49%), p = 0.09]. Notably the tRARP group had more LNs removed and incidence of pN1 disease. When controlling for N stage and LN removed, logistic regression showed a non-significant trend for higher lymphocele rates in eRARP when controlling for

LN count ($p = 0.071$), pathological N stage ($p = 0.111$), or both combined ($p = 0.085$) on symptomatic lymphocele rates.

Peritoneum Reconfiguration

Stolzenburg and colleagues in 2008 performed bilateral peritoneal fenestration at the end of extraperitoneal radical prostatectomy with lymphadenectomy in 50 patients and compared them to 50 patients where the peritoneum was left intact, looking at lymphocele detection at 8 and 30 days on US examination. Significant differences ($p < 0.001$) were found in the fenestration group (3 lymphocele found, all of them asymptomatic) and 16 were found in the control group (7 out of 16 were symptomatic). No differences in terms of pain, inflammation and bowel function were reported [32].

Three studies report peritoneal reconstruction as an intervention to prevent lymphocele formation during transperitoneal RARP:

- Lebeis and colleagues analyzed the rates of lymphocele detection on 77 consecutive patients who underwent a peritoneal interposition flap ("created by rotating and advancing the peritoneum around the lateral surface of the ipsilateral bladder to the dependent portion of the pelvis and fixing it to the bladder itself"). They were compared retrospectively to 77 patients who underwent standard procedure without this reconfiguration. Authors reported no lymphocele in the group with peritoneal flap and 9 (11.6%) lymphoceles in the comparison group ($p = 0.0033$) with a mean detection time of 30.4 days (range 6-72). Every patients with lymphocele experienced symptoms[22].
- Dal Moro and colleagues performed a variation of the aforementioned technique (P.L.E.A.T. - preventing lymphocele ensuring absorption transperitoneally – figure 2) on 176 patients and compared the rates of symptomatic lymphocele to 195 patients who underwent no peritoneal reconfiguration. Results showed significant higher rates ($p = 0.039$) of symptomatic lymphocele in the control group (9/195 - 4.1%) vs the "P.L.E.A.T" group (1/176 - 0.6%) with calculated median detection time of 32 days (range 11-145); the P.L.E.A.T. cohort was characterized by higher pathologic staging and higher number of lymph nodes removed[33].

- Stolzenburg and colleagues in 2018 evaluated US diagnosis of both symptomatic and asymptomatic lymphocele at 8, 28 and 90 days in 193 patients who underwent a reconfiguration with a four point peritoneal flap fixation (4PPFF) compared to matched controls where no reconfiguration was performed. They reported a significant difference in the incidence of symptomatic lymphocele: two patients (1.03%) in the 4PPFF group versus nine patients (4.6%) without 4PPFF ($p = 0.0322$). Asymptomatic lymphocele incidence was also lower in the 4PPFF group ($p = 0.0058$) [34].

Results from the undergoing triple blind randomized clinical trial using a “Peritoneal Iliac Flap” are eagerly awaited (NCT03567525) in order to provide higher quality evidence on this topic.

Pelvic Drains

A single-center randomized non-inferiority trial (non-inferiority margin set at 10%) was performed by Chenam et al. in 2018. Patients were assigned to pelvic drainage (PD) or non-drainage after RARP. Five patients were excluded because of anastomotic leakage or inadequate hemostasis. The study did not reach the target accrual number, however after adjustment for the type I error level authors found no statistically significant differences in 90-day complication rate and symptomatic lymphocele rate (2/92 (2.2%) in the non-drainage cohort and 3/97 (4.1%) in the PD cohort, $p=0.7$) [35].

Sealing Techniques and Sealing Agents

In the setting of LRP different instruments can be used to achieve efficient hemostasis and facilitate lymph node dissection. Yasumizu et al. evaluated one of them looking at lymphocele rates in patients undergoing limited LND during e-LRP with conventional technique (ultrasonic cutting and coagulating system - SonoSurg) or using a vessel sealing device (EnSeal). At 90 days CT scan detected lymphocele in 35/60 patients in the conventional technique groups compared to 28/60 ($p=0.201$), only one lymphocele was symptomatic from the first group. In this study authors calculated a mean size of 1335mm², when the presence of a collection >1500mm² was established as an outcome,

the use of vessel sealing device was the only outcome predictor on the multivariate analysis ($p < 0.01$)[36]. A RCT performed by Grande and colleagues evaluated the rate lymphocele detection and symptomatic lymphocele at 10 and 90 days after RARP and PNLD in 110 patients in whom titanium clips were used during LND and 110 patients in whom LND was performed with bipolar energy only. Results showed no difference between groups in terms of symptomatic lymphocele (6/110 in the titanium clips groups vs 5/110 in the bipolar energy group; $p = 0.7$). Similarly, no difference was found in lymphocele detection rates ($p = 0.9$)[37].

In the setting of laparoscopic extraperitoneal LND for prostate cancer, Waldert evaluated in a small cohort bilateral application of 2.5cc Floseal[®] (*Baxter Healthcare, Deerfield, IL: an hemostatic matrix containing human derivated thrombin*) after LND and 1/32 (3.1%) symptomatic lymphoceles were detected in the Floseal group compared to 16/110 (14.5%) in the control group ($p = 0.149$). In this study timing of imaging was defined by patient symptoms and was not reported [38], the small numbers probably limited the statistical validity of the study.

A randomized trial evaluated the impact of the use of Arista AH[™] (*Davol Inc.: hemostatic powder that acts through Microporous Polysaccharide Hemospheres*) applied only on one side of the PLND bed compared to the other side in 88 patients undergoing RARP. A CT scan at 3 months was performed in every patient and fluid collections of 3cm or greater were considered lymphocele. Five of them (5.7%) occurred on the Arista AH side and nine (10.2%) on the untreated side ($p = 0.248$). None of the lymphocele was symptomatic and no statistical difference was found in average lymphocele size ($p = 0.441$) [39].

More recently, a randomized controlled trial by Buelens and colleagues evaluated lymphocele formation and volume at 1 week, 1 and 3 months after surgery in patients undergoing transperitoneal robot assisted extended PNLD for staging before external beam radiation therapy ($n = 50$) or during RP ($n = 50$). Twenty-five patients were randomized to bilateral placement of TachoSil (*Nycomed-Takeda Austria GmbH: hemostatic sponge made of horse collagen and human thrombin*) above the external iliac vessels. Symptomatic lymphoceles were evaluated as a secondary endpoint. Patient undergoing

PNLD only were older, had a worse ASA score and a more advanced clinical T stage; their procedures, other than shorter operative time and blood loss, included higher number of lymph node removed and higher N+ stage. Symptomatic lymphoceles were detected in 13 patients (26%) in both TachoSil and control group ($p=0.85$) without differences regarding the surgical procedure ($p=0.39$) [40].

Discussion

The overall incidence of symptomatic lymphocele in the included studies is consistent to other reports [5] and, even if relatively low, should be taken in account as it can lead to relevant complications that make efforts and costs of these procedures vain.

Only one study evaluating t-RARP vs e-RARP met the inclusion criteria and was included in our review, reporting no significant differences between the two techniques [31]. Notably the raw incidence of lymphocele was almost twice in the eRARP group, with higher number nodes removed and positive nodes in the tRARP group. These results should then be taken cautiously; in fact PLND in e-RARP may be more technically challenging and in this study it was performed in patients with lower risk of nodal disease, by a single experienced surgeon. Given the increasing need of performing extended PLNDs the most promising, low-quality, evidence comes from techniques that enhance the peritoneal surface of reabsorption. The techniques described in the setting of extraperitoneal [32] or transperitoneal [33,22,34] approaches are cheap, safe and quick, however, evidence from randomized clinical trials is awaited to confirm these results.

The rationale for drain placement goes further than preventing lymphocele and although the well conducted study by Chenam [35] suggests that pelvic drains can be safely omitted, this conclusion may not be used to make any recommendation or generalized to larger cohort of patients and different surgical experiences. In particular this study is limited to a single-center experience, designed to detect overall complications and results are based on an interim analysis due to poor accrual. Overall, in most of the studies analyzed drains were left in place until drainage volume was less than $<100\text{cc}/24\text{h}$ and this usually happens in the first postoperative days; this strategy can be helpful in detecting rare but severe

events like anastomotic disruption and hemorrhage probably without affecting morbidity but may not be sufficient to control lymphatic leakage [12].

None of the included studies was able to show improvement in lymphocele prevention with any of the techniques described, some trends towards improvement were shown by Gilbert[39] and Waldert [38] but none of them reached significant levels, mainly with concerns related to the small sample size in relation to the incidence of the disease. In general the use of hemostatic agents or clips remains questionable particularly when considering costs implicated with it.

Reported results must be read in light of the risk of bias present in the studies. Six of the included studies are retrospective and non-randomized. Direct comparison between studies results is difficult because of potential confounding interventions in the same group (for example different extent of PLND) and many other potential confounders that were not reported in the papers. The outcome of symptomatic lymphocele was assessed at different times and with different techniques. The only group of comparable interventions was that of peritoneal reconfiguration, but due to the retrospective nature of the study and the lack of information on potential confounder was not judged to be amenable to meta-analysis. All studies in this setting show some benefit in peritoneal reconfiguration but results are to be read in light of the high risk of bias and thus prospective and randomized studies are eagerly awaited.

Despite the reported limitations the current review provides a summary of the most updated available evidence that could help the surgeon in its intraoperative evaluations and guide future research.

Conclusion

Symptomatic lymphocele is the most common complication after RARP. Maximizing peritoneal surface of reabsorption could help preventing its formation and, even though supported only by non-randomized data, could be a quick and inexpensive option and deserves further evaluation in prospective randomized setting. Current literature does not support the use of particular sealing techniques or agents. Further evidence is needed to draw meaningful conclusions about other approaches for lymphocele prevention.

Authors' contribution:

G. Motterle: Project development, data collection, data analysis, manuscript writing

A. Morlacco: Project development, data collection, data analysis, manuscript writing

N. Zanovello: manuscript editing and critical revision

M. Ahmed: manuscript editing and critical revision

F. Zattoni: Critical revision of the manuscript for important intellectual content, supervision

RJ. Karnes: Critical revision of the manuscript for important intellectual content, supervision

F. Dal Moro: Critical revision of the manuscript for important intellectual content, supervision

References:

1. Fossati N, Willemse PM, Van den Broeck T, van den Bergh RCN, Yuan CY, Briers E, Bellmunt J, Bolla M, Cornford P, De Santis M, MacPepple E, Henry AM, Mason MD, Matveev VB, van der Poel HG, van der Kwast TH, Rouviere O, Schoots IG, Wiegel T, Lam TB, Mottet N, Joniau S (2017) The Benefits and Harms of Different Extents of Lymph Node Dissection During Radical Prostatectomy for Prostate Cancer: A Systematic Review. *European urology* 72 (1):84-109. doi:10.1016/j.eururo.2016.12.003
2. Mottet N, Bellmunt J, Bolla M, Briers E, Cumberbatch MG, De Santis M, Fossati N, Gross T, Henry AM, Joniau S, Lam TB, Mason MD, Matveev VB, Moldovan PC, van den Bergh RCN, Van den Broeck T, van der Poel HG, van der Kwast TH, Rouviere O, Schoots IG, Wiegel T, Cornford P (2017) EAU-ESTRO-SIOG Guidelines on Prostate Cancer. Part 1: Screening, Diagnosis, and Local Treatment with Curative Intent. *European urology* 71 (4):618-629. doi:10.1016/j.eururo.2016.08.003
3. Metcalf KS, Peel KR (1993) Lymphocele. *Annals of the Royal College of Surgeons of England* 75 (6):387-392
4. Liss MA, Palazzi K, Stroup SP, Jabaji R, Raheem OA, Kane CJ (2013) Outcomes and complications of pelvic lymph node dissection during robotic-assisted radical prostatectomy. *World journal of urology* 31 (3):481-488. doi:10.1007/s00345-013-1056-9
5. Ploussard G, Briganti A, de la Taille A, Haese A, Heidenreich A, Menon M, Sulser T, Tewari AK, Eastham JA (2014) Pelvic lymph node dissection during robot-assisted radical prostatectomy: efficacy, limitations, and complications-a systematic review of the literature. *European urology* 65 (1):7-16. doi:10.1016/j.eururo.2013.03.057
6. Jerezek-Fossa BA, Colangione SP, Fodor C, Russo S, Cambria R, Zerini D, Bonora M, Cecconi A, Vischioni B, Vavassori A, Matei DV, Bottero D, Brescia A, Musi G, Mazzoleni F, Orsi F, Bonomo G, De Cobelli O, Orecchia R (2015) Radiotherapy in Prostate Cancer Patients With Pelvic Lymphocele After Surgery: Clinical and Dosimetric Data of 30 Patients. *Clinical genitourinary cancer* 13 (4):e223-e228. doi:10.1016/j.clgc.2014.11.007
7. Lee HJ, Kane CJ (2014) How to minimize lymphoceles and treat clinically symptomatic lymphoceles after radical prostatectomy. *Current urology reports* 15 (10):445. doi:10.1007/s11934-014-0445-y

8. Capitanio U, Pellucchi F, Gallina A, Briganti A, Suardi N, Salonia A, Abdollah F, Di Trapani E, Jeldres C, Cestari A, Karakiewicz PI, Montorsi F (2011) How can we predict lymphorrhoea and clinically significant lymphocele after radical prostatectomy and pelvic lymphadenectomy? Clinical implications. *BJU international* 107 (7):1095-1101. doi:10.1111/j.1464-410X.2010.09580.x
9. Keskin MS, Argun OB, Obek C, Tufek I, Tuna MB, Mourmouris P, Erdogan S, Kural AR (2016) The incidence and sequela of lymphocele formation after robot-assisted extended pelvic lymph node dissection. *BJU international* 118 (1):127-131. doi:10.1111/bju.13425
10. Hu JC, Gold KF, Pashos CL, Mehta SS, Litwin MS (2003) Role of surgeon volume in radical prostatectomy outcomes. *Journal of clinical oncology : official journal of the American Society of Clinical Oncology* 21 (3):401-405. doi:10.1200/jco.2003.05.169
11. Orvieto MA, Coelho RF, Chauhan S, Palmer KJ, Rocco B, Patel VR (2011) Incidence of lymphoceles after robot-assisted pelvic lymph node dissection. *BJU international* 108 (7):1185-1190. doi:10.1111/j.1464-410X.2011.10094.x
12. Danuser H, Di Pierro GB, Stucki P, Mattei A (2013) Extended pelvic lymphadenectomy and various radical prostatectomy techniques: is pelvic drainage necessary? *BJU international* 111 (6):963-969. doi:10.1111/j.1464-410X.2012.11681.x
13. Yuh BE, Ruel NH, Mejia R, Novara G, Wilson TG (2013) Standardized comparison of robot-assisted limited and extended pelvic lymphadenectomy for prostate cancer. *BJU international* 112 (1):81-88. doi:10.1111/j.1464-410X.2012.11788.x
14. Tikkinen KAO, Cartwright R, Gould MK, Naspro R, Novara G, Sandset PM, Violette PD, Guyatt GH (2018) EAU Guidelines on Thromboprophylaxis in Urological Surgery 2018. In: *European Association of Urology Guidelines. 2018 Edition.*, vol presented at the EAU Annual Congress Copenhagen 2018. European Association of Urology Guidelines Office, Arnhem, The Netherlands,
15. Koch MO, Smith JA, Jr. (1997) Low molecular weight heparin and radical prostatectomy: a prospective analysis of safety and side effects. *Prostate cancer and prostatic diseases* 1 (2):101-104. doi:10.1038/sj.pcan.4500214
16. Naselli A, Andreatta R, Introini C, Fontana V, Puppo P (2010) Predictors of symptomatic lymphocele after lymph node excision and radical prostatectomy. *Urology* 75 (3):630-635. doi:10.1016/j.urology.2009.03.011

17. Gotto GT, Yunis LH, Guillonneau B, Touijer K, Eastham JA, Scardino PT, Rabbani F (2011) Predictors of symptomatic lymphocele after radical prostatectomy and bilateral pelvic lymph node dissection. *International journal of urology : official journal of the Japanese Urological Association* 18 (4):291-296. doi:10.1111/j.1442-2042.2010.02710.x
18. Kowalczyk KJ, Levy JM, Caplan CF, Lipsitz SR, Yu HY, Gu X, Hu JC (2012) Temporal national trends of minimally invasive and retropubic radical prostatectomy outcomes from 2003 to 2007: results from the 100% Medicare sample. *European urology* 61 (4):803-809. doi:10.1016/j.eururo.2011.12.020
19. Porpiglia F, Terrone C, Tarabuzzi R, Billia M, Grande S, Musso F, Burruni R, Renard J, Scarpa RM (2006) Transperitoneal versus extraperitoneal laparoscopic radical prostatectomy: experience of a single center. *Urology* 68 (2):376-380. doi:10.1016/j.urology.2006.02.039
20. Chung JS, Kim WT, Ham WS, Yu HS, Chae Y, Chung SH, Choi YD (2011) Comparison of Oncological Results, Functional Outcomes, and Complications for Transperitoneal Versus Extraperitoneal Robot-Assisted Radical Prostatectomy: A Single Surgeon's Experience. *Journal of endourology* 25 (5):787-792. doi:10.1089/end.2010.0222
21. Mihaljevic AL, Heger P, Abbasi Dezfouli S, Golriz M, Mehrabi A (2017) Prophylaxis of lymphocele formation after kidney transplantation via peritoneal fenestration: a systematic review. *Transplant international : official journal of the European Society for Organ Transplantation* 30 (6):543-555. doi:10.1111/tri.12952
22. Lebeis C, Canes D, Sorcini A, Moinzadeh A (2015) Novel Technique Prevents Lymphoceles After Transperitoneal Robotic-assisted Pelvic Lymph Node Dissection: Peritoneal Flap Interposition. *Urology* 85 (6):1505-1509. doi:10.1016/j.urology.2015.02.034
23. Musser JE, Assel M, Guglielmetti GB, Pathak P, Silberstein JL, Sjoberg DD, Bernstein M, Laudone VP (2014) Impact of routine use of surgical drains on incidence of complications with robot-assisted radical prostatectomy. *Journal of endourology* 28 (11):1333-1337. doi:10.1089/end.2014.0268
24. Sharma S, Kim HL, Mohler JL (2007) Routine pelvic drainage not required after open or robotic radical prostatectomy. *Urology* 69 (2):330-333. doi:10.1016/j.urology.2006.09.044

25. Charoenkwan K, Kietpeerakool C (2017) Retroperitoneal drainage versus no drainage after pelvic lymphadenectomy for the prevention of lymphocyst formation in women with gynaecological malignancies. The Cochrane database of systematic reviews 6:Cd007387. doi:10.1002/14651858.CD007387.pub4
26. Prodromidou A, Iavazzo C, Fotiou A, Psomiadou V, Drakou M, Vorgias G, Kalinoglou N (2019) The application of fibrin sealant for the prevention of lymphocele after lymphadenectomy in patients with gynecological malignancies: A systematic review and meta-analysis of randomized controlled trials. *Gynecologic oncology* 153 (1):201-208. doi:10.1016/j.ygyno.2019.01.011
27. Gerken ALH, Dobroschke J, Reissfelder C, Hetjens S, Braun V, Di Monta G, Jakob J, Hohenberger P, Nowak K, Herrle F (2019) Tissue sealants for the prevention of lymphoceles after radical inguinal lymph node dissection in patients with melanoma: A systematic review and individual patient data meta-analysis. *Journal of surgical oncology*. doi:10.1002/jso.25366
28. Moher D, Liberati A, Tetzlaff J, Altman DG (2009) Preferred reporting items for systematic reviews and meta-analyses: the PRISMA statement. *Annals of internal medicine* 151 (4):264-269, w264
29. Higgins JPT, Altman DG, Gøtzsche PC, Jüni P, Moher D, Oxman AD, Savović J, Schulz KF, Weeks L, Sterne JAC (2011) The Cochrane Collaboration's tool for assessing risk of bias in randomised trials. *BMJ* 343:d5928. doi:10.1136/bmj.d5928
30. Wells GAS, B.; O'Connell, D.; Peterson, J.; Welch, V.; Losos, M.; Tugwell, P.; The Newcastle-Ottawa Scale (NOS) for assessing the quality of nonrandomised studies in meta-analyses. http://www.ohri.ca/programs/clinical_epidemiology/oxford.asp.
31. Horovitz D, Lu X, Feng C, Messing EM, Joseph JV (2017) Rate of Symptomatic Lymphocele Formation After Extraperitoneal vs Transperitoneal Robot-Assisted Radical Prostatectomy and Bilateral Pelvic Lymphadenectomy. *Journal of endourology* 31 (10):1037-1043. doi:10.1089/end.2017.0153

32. Stolzenburg JU, Wasserscheid J, Rabenalt R, Do M, Schwalenberg T, McNeill A, Constantinides C, Kallidonis P, Ganzer R, Liatsikos E (2008) Reduction in incidence of lymphocele following extraperitoneal radical prostatectomy and pelvic lymph node dissection by bilateral peritoneal fenestration. *World journal of urology* 26 (6):581-586. doi:10.1007/s00345-008-0327-3
33. Dal Moro F, Zattoni F (2017) P.L.E.A.T.-Preventing Lymphocele Ensuring Absorption Transperitoneally: A Robotic Technique. *Urology* 110:244-247. doi:10.1016/j.urology.2017.05.031
34. Stolzenburg J-U, Arthanareeswaran VKA, Dietel A, Franz T, Liatsikos E, Kyriazis I, Ganzer R, Yaney K, Do HM (2018) Four-point Peritoneal Flap Fixation in Preventing Lymphocele Formation Following Radical Prostatectomy. *European Urology Oncology* 1 (5):443-448. doi:10.1016/j.euo.2018.03.004
35. Chenam A, Yuh B, Zhumkhawala A, Ruel N, Chu W, Lau C, Chan K, Wilson T, Yamzon J (2018) Prospective randomised non-inferiority trial of pelvic drain placement vs no pelvic drain placement after robot-assisted radical prostatectomy. *BJU international* 121 (3):357-364. doi:10.1111/bju.14010
36. Yasumizu Y, Miyajima A, Maeda T, Takeda T, Hasegawa M, Kosaka T, Kikuchi E, Oya M (2013) How can lymphocele development be prevented after laparoscopic radical prostatectomy? *Journal of endourology* 27 (4):447-451. doi:10.1089/end.2012.0356
37. Grande P, Di Pierro GB, Mordasini L, Ferrari M, Wurnschimmel C, Danuser H, Mattei A (2017) Prospective Randomized Trial Comparing Titanium Clips to Bipolar Coagulation in Sealing Lymphatic Vessels During Pelvic Lymph Node Dissection at the Time of Robot-assisted Radical Prostatectomy. *European urology* 71 (2):155-158. doi:10.1016/j.eururo.2016.08.006
38. Waldert M, Remzi M, Klatt T, Klingler HC (2011) FloSeal reduces the incidence of lymphoceles after lymphadenectomies in laparoscopic and robot-assisted extraperitoneal radical prostatectomy. *J Endourol* 25 (6):969-973. doi:10.1089/end.2010.0635

39. Gilbert DR, Angell J, Abaza R (2016) Evaluation of Absorbable Hemostatic Powder for Prevention of Lymphoceles Following Robotic Prostatectomy With Lymphadenectomy. *Urology* 98:75-80. doi:10.1016/j.urology.2016.06.071
40. Buelens S, Van Praet C, Poelaert F, Van Huele A, Decaestecker K, Lumen N (2018) Prospective Randomized Controlled Trial Exploring the Effect of TachoSil on Lymphocele Formation After Extended Pelvic Lymph Node Dissection in Prostate Cancer. *Urology* 118:134-140. doi:10.1016/j.urology.2018.05.008

List of abbreviations used:

e-RARP/LRP: extraperitoneal robotic/laparoscopic radical prostatectomy

LN: lymph node

LND: lymph node dissection

LRP: laparoscopic radical prostatectomy

PLND: pelvic lymph node dissection

RARP: robotic radical prostatectomy

RCT: randomized clinical trial

RRP: retropubic radical prostatectomy

t-RARP/LRP: transperitoneal robotic/laparoscopic radical prostatectomy

Table 1: Characteristics of Included Studies

Author	Study	Methods	N Participants (pairs in matched design)	Surgical Technique	Extent of LND	LMWH prophylaxis	Drain	Peritoneum	Ligation Techniques	Other	Primary outcome
Buelens	2013-2016	RCT	100	Robotic, transperitoneal	Extended	Yes	Yes	n.d.	Metallurgical clips	Tachosil*	Lymphocele volume on 1w, 1mo, 3 mo
Chen	2016	RCT	189	Robotic, transperitoneal	Limited or Extended	None	Yes vs No*	n.d.	Weck clips	None	Complications at 90days
Dal Moro	n.d.	Cohort	371	Robotic, transperitoneal	Limited or Extended	Yes	Yes	yes*	n.d.	n.d.	Symptomatic Lymphocele
Gilbert	n.d.	RCT	88	Robotic, transperitoneal	Limited or	Yes	No	not closed	Hem-o-Lock	AristaAH	Lymphocele detection at 3

Downloaded by Westem Sydney University from www.liebertpub.com at 12/06/19. For personal use only.
 Lymphocele prevention in minimally-invasive radical prostatectomy and lymph-node dissection: a systematic review (DOI: 10.1089/end.2019.0716)
 reviewed and accepted for publication, but has yet to undergo copyediting and proof correction. The final published version may differ from this proof.

					Extend					*	months	
Grande	2012-2015	RCT		220	Robotic, approach n.d.	Extended	n.d.	n.d.	n.d.	Clips vs bipolar *	n.d.	Lymphocele at 10 and 30d
Horowitz	2003-2016	Cohort, propensity matched		671	Robotic, transperitoneal vs extraperitoneal *	Extended	Yes	n.d.	n.d.	Hem-o-Lock	n.d.	Symptomatic Lymphocele
Lebeis	n.d.	Cohort		154	Robotic, transperitoneal	Limited or Extended	Yes	Yes	yes*	Hem-o-Lock	n.d.	Symptomatic Lymphocele
Stolzenburg	2006-2007	Cohort		100	Laparoscopic, extraperitoneal	Extended	n.d.	n.d.	yes*	n.d.	n.d.	Complications up to 90days

Stolzenburg	2017	Cohort	193	Laparoscopic or robotic, transperitoneal	Extended	n.d.	Yes	Yes*	Clips	n.d.	Symptomatic and asymptomatic lymphocele up to 90d
Walder	2008-2009	Cohort	142	Laparoscopic, extraperitoneal	Limited	Yes	Yes	n.d.	n.d.	FloSeal*	Symptomatic Lymphocele
Yasumi	2010-2011	RCT	120	Laparoscopic, extraperitoneal	Limited	n.d.	Yes	n.d.	VSD*	n.d.	Lymphocele detection at 1 month

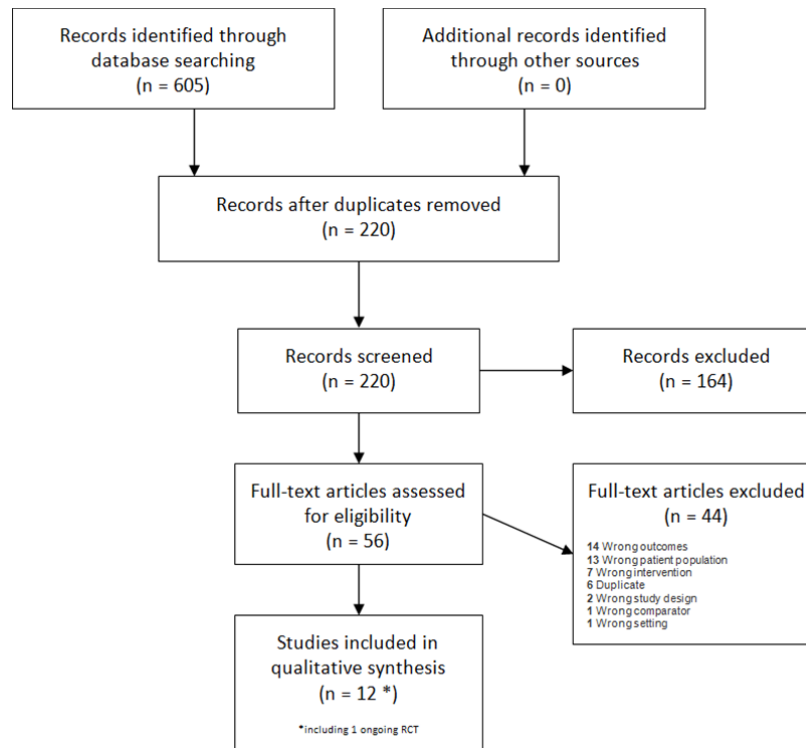
* Intervention investigated in the study; n.d.= no information available

Table 2: Risk of Bias Assessment for Randomized Studies

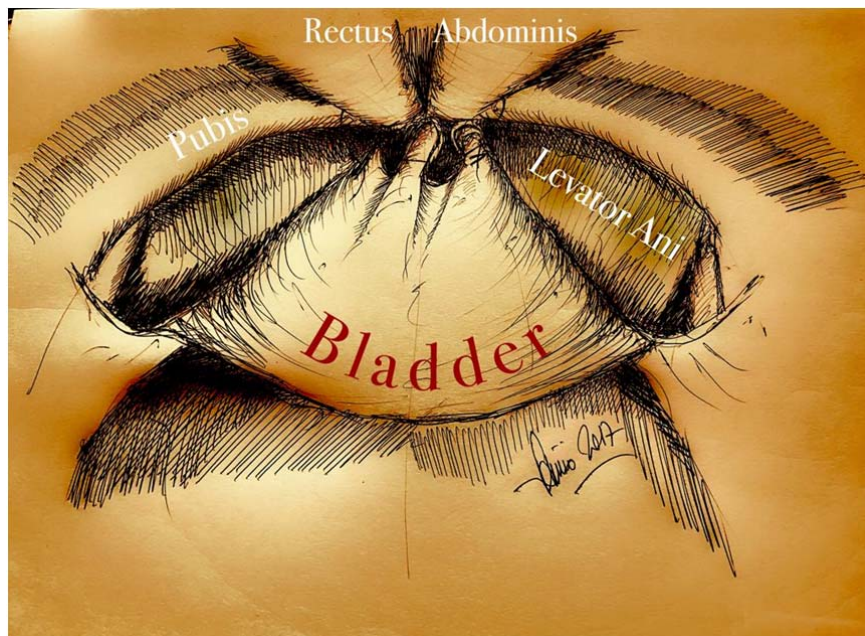
	Random sequence generation (selection bias)	Allocation concealment (selection bias)	Blinding of participants and personnel (performance bias)	Blinding of outcome assessment (detection bias)	Incomplete outcome data (attrition bias)	Selective reporting (reporting bias)	Other bias
Buelens 2018	+	+	?	+	-	-	
Chenam 2018	-	-	+	?	?	?	
Gilbert 2016	?	?	?	+	-	+	
Grande 2017	+	?	+	+	+	-	
Yasumizu 2013	-	?	?	?	+	+	

Table 3: Risk of Bias Assessment for Non-Randomized Studies

Author	Selection	Comparability	Outcome
Dal Moro	****		**
Horovitz	****	**	***
Lebeis	****		**
Stolzenburg (2008)	***		**
Stolzenburg (2018)	***	**	**
Waldert	****		**



PRISMA flowchart of study selection



P.L.E.A.T. reconfiguration (original drawing by the author)