

# 1994 ANNUAL REPORT

## CENTRE FOR SOCIAL AND DEVELOPMENT STUDIES

University of Natal, Durban



# 1994 ANNUAL REPORT

## CENTRE FOR SOCIAL AND DEVELOPMENT STUDIES

University of Natal, Durban



SCHOOL OF DEVELOPMENT STUDIES  
(INCORPORATING CSDS)  
UNIVERSITY OF NATAL  
DURBAN 4041  
SOUTH AFRICA

The University of Natal is an equal opportunities,  
affirmative action University.

## **ADDRESS**

The postal address of the Centre is:

CENTRE FOR SOCIAL AND DEVELOPMENT STUDIES,  
UNIVERSITY OF NATAL (Durban)  
PRIVATE BAG X10  
DALBRIDGE 4014  
SOUTH AFRICA

**TELEGRAPHIC ADDRESS:** 'UNIVERSITY, DURBAN'

**TELEX:** 6-20177 SA

**FAX:** (031) 260 2359

**TELEPHONE:** (031) 260 2361

**EMAIL:** [CSDS@UND.AC.ZA](mailto:CSDS@UND.AC.ZA)

## **HOW TO ORDER PUBLICATIONS**

Orders, addressed to the Librarian, should cite author, year, and short title. Please send cheque (made out to the University of Natal and including VAT) with order.

## **INDICATOR SA PUBLICATIONS**

All orders for Indicator SA publications should be made directly to the Indicator Project SA at the above address (Tel: 031 - 2602525 or 2602369). Reprints of single articles are not available but single back issues may be purchased. Subscription information, a catalogue and an index are available on request.

## CONTENTS

		PAGE
1	INTRODUCTION	1
2	STAFF	2
3	STRUCTURE OF THE CENTRE	4
4	BRIEF INTRODUCTION TO THE CENTRE	5
5	OVERVIEW OF STAFF ACTIVITIES IN 1994	8
6	URBAN FORUM SEMINARS	20
7	JILL NATTRASS VISITING FELLOW SEMINARS	20
8	VISITORS TO THE CENTRE	21
9	STAFF PUBLICATIONS 1994	22

---

## INTRODUCTION

---

The past year has been a remarkable one for South Africa. The April 27 universal franchise elections will be recorded as one of the most significant events in South African history. The course of last year's events shaped the activity patterns of CSDS in many ways. In the build-up to the elections some CSDS staff were engaged in organising, monitoring, observing and documenting aspects of the elections. Participation in policy-oriented research increased dramatically to keep up with the pace of transformation which is occurring in South African society. International interest and concern about developments in South Africa have opened up new research opportunities to share our unique experiences and to learn lessons from other places around the world.

Against this background of rapid change and significant events, CSDS celebrated its 40th year of operation. To mark its long and proud history of achievement the Centre produced a guide to its many-faceted activity programme: *A Profile of the Centre for Social and Development Studies*. The profile communicates the Centre's key role in research and fulfilling the University of Natal's mission of striving toward quality in teaching, research and service to the entire South African community. Copies of the Profile were widely distributed but there are still some available for interested readers from the CSDS librarian, Mary Smith.

In the second half of 1994, CSDS was engaged in a strategic planning exercise to ensure that its future development is in tune with its rapidly changing environment. CSDS prepared a strategic planning document which contained a number of scenarios for the future. Resulting from this effort a strategic vision for the future of CSDS was drafted to guide the Centre to the millennium. The vision statement sees CSDS as spearheading the university's social research programme and playing a key role in shaping innovative research directions in the new South Africa.

Professor Simon Bekker, who joined CSDS as Director in 1989, resigned to take up another university position. During his period of directorship, CSDS underwent major transformations which brought together two subdivisions in the Centre. Colleagues in CSDS thank Simon for his collegial guidance in the past six years and wish him well in his new appointment.

VALERIE MØLLER  
ACTING DIRECTOR

*Professor and Director*

**S B Bekker** BSc (Hons) (Stell)  
MA (Wayne State, USA) PhD (Cape Town)

*Professor and Acting Director  
from July - December*

**V Møller** LicPhil (Zurich) PhD (Zurich)

*Associate Professor/Maurice Webb  
Race Relations Unit*

**P M Zulu** BA (Hons) Dipl Marketing  
Management (Unisa) PhD (Natal)

*Associate Professor* **M L Morris** BA (Hons) (Cape Town) PhD (Sussex)

*Senior Research Fellow*

**F J Lund** BSocSc (Cape Town)  
Dipl Comm Dev (Manchester) MSocSc (Natal)

*Senior Contract Research Staff*

**E M Ardington** BA (Cape Town)  
M A (Oxon)  
**R C Cross** BA (Antioch) MA (Michigan)

*Junior Research Fellow  
(until February)*

**R Ntshingila-Khosa** BSc (Hons) (Wits)  
Higher Dipl Educ (Wits) MEd (Harvard)

*Junior Research Fellow  
(from October)*

**Z Patel** BSc (Hons) (Natal)

*Contract Research Staff*

**C Clark** MA (Natal) and  
Dipl Public Relations (PRISA)  
**E Cuddumbey** Dipl Ed (Durban)  
**A C Louw** BSocSc (Hons) (Cape Town)  
**L Luckin** BSocSc (Natal)  
**A McIntosh**  
**B Mlambo** BA (Uniswa) MA (Carleton)  
**T Mngadi** BA (Hons) (Natal) HDE (Natal)  
**T M Mzimela** BAdmin (Unitra) BSocSc (Hons) (Natal)  
Industrial Labour Studies (Hons) (Natal)  
**N Zulu** BSocSc (Natal)

## *Administrative Staff*

*Administrative Officer*

**L Anderson**

*Administrative Officer*

**M C N Wells**

*Computer Technician*

**R M Devey MSc (Natal)**  
Dipl Datametrics (UNISA)

*Senior Administrative Assistant*

**M M Smith BA (Natal)**

*Administrative Assistant*

**J Ngcobo**

*Administrative Assistant - RUSU*

**S Klipp**

*Administrative Assistant - Maurice Webb*

**M Ngubane**

*Clerical Assistant*

**M Mtshali**

## *Indicator Project South Africa / Indicator Press*

*Manager and Editor*

**K Mac Gregor**

*Production Manager*

**R J Evans BSocSc (Hons) (Cape Town)**  
MSocSc (Natal)

*Administrative Officer*

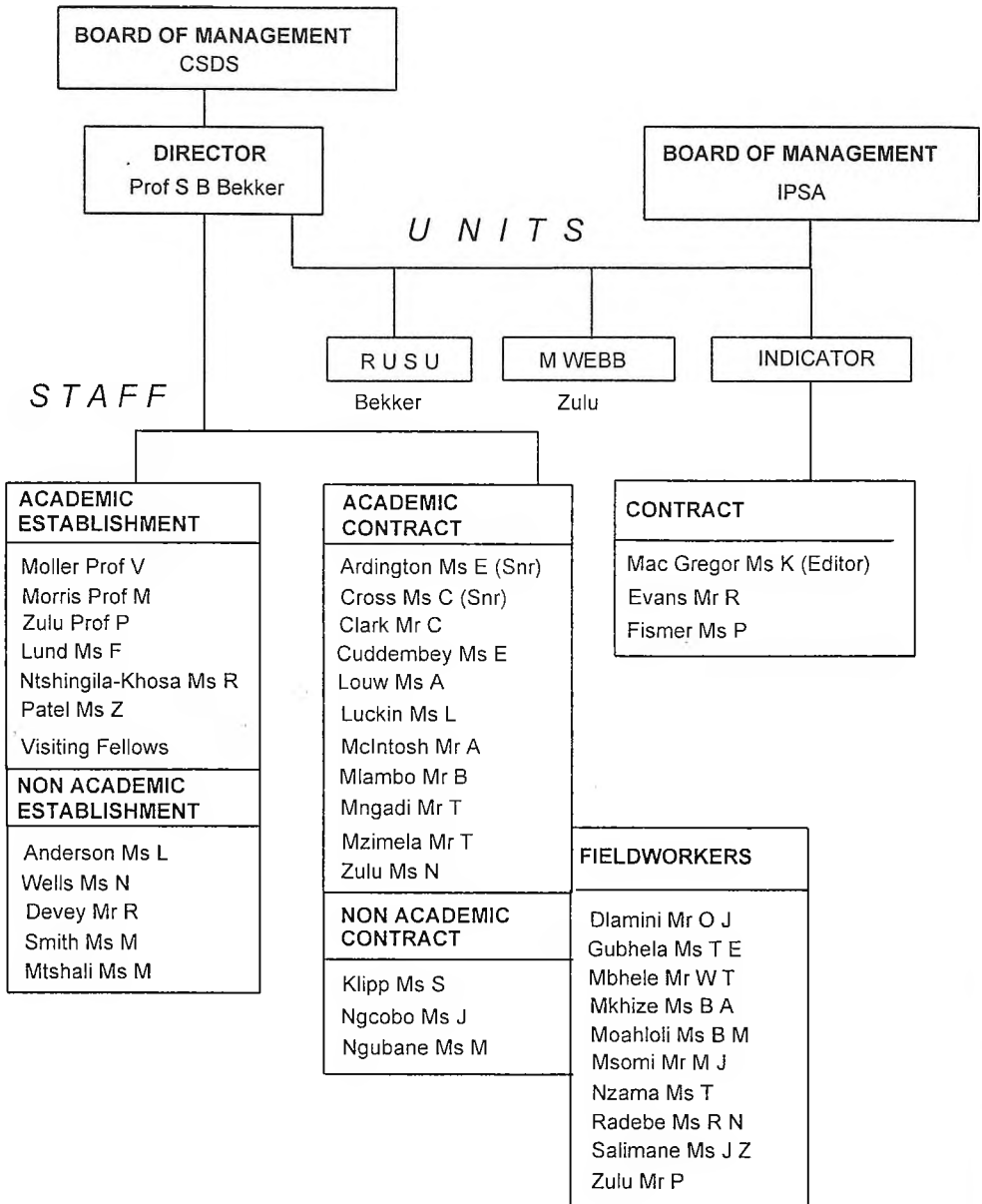
**P E Fisser**

## *Jill Natrass Visiting Fellows*

Period: June - October

**Prof G Hart MA (Rhodes) PhD (Cornell)**

Aug - October **Dr S Randrianja** Maitrise d'Histoire & Maitrise  
d'Economie (Paris VII)  
DEA d'Histoire (Paris VII),  
Doctorat de III<sup>o</sup> cycle (Paris VII)



**Visiting Research Fellows:** Professor Gillian Hart and Dr Solofo Randrianja



### **4.1      Mission**

The Centre for Social and Development Studies, as an integral part of the University of Natal and committed to its mission statement, sees its role:

- 1      to be a catalyst in the process of socio-economic and political transition through the delivery of academically sound basic and comparative research (together with graduate supervision and teaching on an individual basis) for policy makers, actors and the intellectual community involved in reconstruction in South Africa and the Natal region;
  
- 2      to promote affirmative action in terms of race and gender through the training and qualification of researchers.

The Centre for Social and Development Studies is engaged in multi-disciplinary research at the University of Natal. The activities of the Centre encompass the following:

### **4.2      A Research Centre**

In 1988 the University of Natal's Centre for Applied Social Sciences and Development Studies Unit were formally integrated into the **Centre for Social and Development Studies**. The Centre for Applied Social Sciences (the Institute for Social Research until the end of 1975) had been operating since 1954, and the Development Studies Unit was established as a research unit within the Centre for Applied Social Sciences in 1982. Until 1988 both sections operated autonomously in the Social Science Faculty.

In the 1990's the Centre's main activity is in the field of basic and applied research with a strong emphasis on social development of a society in transition. The Centre also provides on-the-job-training for social researchers.

Studies are undertaken by individual members of staff and by research teams under the supervision of the Director and other senior members of staff.

### **4.3 A Communication and Publication Service for the General Public**

The work produced by the Centre for Social and Development Studies is widely known. Over the past decade more than 350 titles covering numerous topical issues in South African society have been made available to the public for purchase. Publications series include research reports, working papers, fact papers, monographs and occasional papers, conference proceedings, and journal articles.

### **4.4 A Resource Centre**

The Centre also operates as a Resource Centre through its extensive library to provide socio-economic and other data, particularly on the KwaZulu-Natal region for interested sectors outside the University.

### **4.5 Currently the Centre for Social and Development Studies encompasses three specialist units:**

The **Indicator Project South Africa (IPSA)**, established in 1982, publishes the quarterly journal **INDICATOR SA**, a monitor of social change and development in Southern Africa. Subscribers include medium to large size companies, government, libraries, universities and individuals. **Indicator Press**, established in 1994, publishes books investigating important social issues.

The **Maurice Webb Race Relations Unit**, which was formed in 1984, carries out socio-political research and educational programmes.

The **Rural-Urban Studies Unit (RUSU)**, a unit initiated in 1983, concentrates on development studies in the KwaZulu-Natal region.

Staff in the Centre for Social and Development Studies comprise a Director and five establishment academic posts, a variable number of contract research fellows and assistants who are employed to work on specific projects, and administrative staff.

In addition the Centre offers a visiting Fellowship in honour of the late Professor Jill Nattrass. The post is awarded to local and foreign

academics to enable them to pursue research at the Centre for periods of up to six months.

A Board of Management was established for the Centre during 1989, after the Centre left the Faculty of Social Science. The Board of Management which is chaired by the Vice-Chancellor or his/her nominee includes the heads of all departments in the Faculty of Social Science, some departmental heads from other Faculties, directors of other research units, and three non-university members elected by CSDS. The Board's first chairperson was Professor Cresswell.

#### **4.6 Finance**

The Centre is an integral part of the University of Natal and is financed in the same manner as other University departments.

Funds for undertaking research, for the purchase of research equipment and the employment of contract research staff are raised by individual staff members.

CSDS undertakes applied and policy-oriented research into a large number of social, economic and political issues. The CSDS *Profile* referred to in the introduction outlined eleven major thrusts of research. Work within many fields directly involves community participation and feeds directly into policy. During 1994, research activities clustered around the following broad headings:

***Education***

Valerie Møller published results of her three-generation township study on relationships between homework and study habits and educational achievement. A key finding was that Saturday School attendance (see below) was linked to better school results.

Nomusa Zulu and Themba Mzimela conducted an in-depth study with new students at the University of Natal to document their fresher experiences. The research was commissioned by the University of Natal and the results will feed into admissions, residence and teaching policy at the university.

***Launching democracy***

Paulus Zulu was seconded to the Independent Electoral Commission as the Natal specialist to monitor and analyse the run-up to the April 1994 elections. The collected materials will form the basis of publications on the election and launching of democracy in South Africa.

Valerie Møller assisted with a post-election evaluation of voter education which also picked up significant positive shifts in quality of life trends. The report is due to be published by *Indicator Press* in early 1995.

***Economic and Basic Needs***

Mike Morris pursued research on the economic structure of KwaZulu-Natal and development challenges as well as an assessment of basic needs and service delivery for urban and peri-urban black formal and informal settlements.

## ***Environmental issues***

Since *Indicator SA* attracted attention to environmental issues with its widely acclaimed *Rotating the Cube*, environmental research has become a growing concern. Several CSDS research efforts focused on the environment. Maurice Webb Race Relations staff researched community concerns, environmental issues and contributed to a number of forums to formulate policy.

Zarina Patel, as a member of the environmental group of the Cato Manor Development Association, is researching open space planning. Proposals will have practical application in an area marked for a Reconstruction and Development lead project in upgrading. She hosted delegates of the International Council for Local Environmental Initiatives to secure Durban's bid for inclusion in the Local Agenda 21 Model Communities Programme.

Themba Mzimela is involved in applied research to study how corporate social responsibility programmes benefit business, workers and the wider community.

## ***Ethnic studies***

Visiting Fellow Solofo Randrianja pursued research into ethnicity during his stay in CSDS and contributed to the local debate on ethnic identities in a number of seminars at the University of Natal and sister universities. Simon Bekker published on ethnicity issues and acted as lead-in discussant at the annual conference of the Association for the Study of Ethnicity and Nationalism held in London in March 1994. His book *Ethnicity in Focus* published by *Indicator SA* was distributed to the wider public in the course of the year. Francie Lund published in French on the mobilisation of identity resulting from the historical situation of the Bantustans.

## ***Evaluating NGOs***

Francie Lund was a member of a team of local and international experts including academics from the

University of East Anglia who evaluated the Land Development Unit based at the University of the Western Cape. As a logical follow-up to her earlier studies of unemployment, Valerie Møller evaluated rural reactions to a training module on baking offered by the KwaZulu Training Trust.

### *Poverty*

Poverty and economic issues remained a focal research area during 1994. Libby Ardington, Catherine Cross and Francie Lund investigated various aspects of rural and urban poverty. Valerie Møller and Richard Devey analysed secondary data on poverty compiled by the World Bank sponsored nation-wide household survey of Statistics on Living Standards and Development to explore links between depressed subjective well-being and material deprivation. CSDS staff with other South African academics had shared in designing the study. Next year Paulus Zulu and Francie Lund will be part of a national team sponsored by the World Bank project to assess poverty in the rural areas of South Africa using a more qualitative research approach.

Several CSDS staffers are working on a joint project to research rural livelihoods with eminent international researchers Merle and Michael Lipton of IDS at Sussex University. The results of the Rural Livelihoods Project will be presented in book form. A two day workshop organised by Libby Ardington was held for authors and discussants which attracted participants from universities and the private and public sector. Libby Ardington and Francie Lund's contribution relates to the role of the state and in particular welfare in rural livelihood creation, Paulus Zulu's to rural politics, Catherine Cross' to land reform and RUSU's to the environment.

Visiting Fellow Gill Hart inquired into local economic initiatives and community reactions with special reference to industrial dynamics amongst Taiwanese

business enterprises in KwaZulu-Natal.

*Shifting  
Boundaries*

Francie Lund worked with the strategic management team for health and welfare for North West Province over a three month period to assist with the amalgamation of former Bophuthatswana and former Region J of the Western Transvaal. Simon Bekker was involved in research underlying proposals for the new provincial capital for the Eastern Transvaal.

*Policy Studies  
regarding  
Infrastructure*

Several CSDS research efforts concentrated on the infrastructural needs of the South African population. Catherine Cross, Craig Clark and Simon Bekker reported to the Department of Welfare on methods to promote increased community involvement in the allocation, control and expenditure of funds for community development. Catherine Cross and her team continued their research into constraints on successful development-related rural training in conjunction with the School of Rural Community Development at the University of Natal, Pietermaritzburg. Zarina Patel was involved in a joint research initiative with the Department of Geographical and Environmental Sciences, University of Natal and Mangosutho as well as M L Sultan Technikons to inquire into training needs of rural communities for economic empowerment. Paulus Zulu and Bonga Mlambo conducted an infrastructural needs assessment in rural KwaZulu-Natal on behalf of the Southern Natal Joint Services Board. Mike Morris pursued his research concerned with the redistribution of access to telephone services and its impact on development. He and Valerie Møller assisted with metropolitan efforts to map social indicators in the Durban Functional Region.

RUSU continued its work in the field of rural reconstruction and land reform. It is currently undertaking two "zonal studies" in a semi-rural metropolitan area and a central midlands area to

inquire into policy options for more equitable access to natural resources and methods of sustainable resource management.

*Land and land reform*

Catherine Cross is serving as Coordinator of the southern region of the Natal Land Reform Research initiative and served on the Land Tenure Working Group and the Agricultural Working Group of the Regional Economic Forum. She also attended the Independent Development Trust as well as the Land and Policy Centre Environmental Policy Conferences and consulted on gender and rural production issues.

In March, RUSU hosted a workshop on the Natal Land Reform Research initiative. Catherine Cross was asked to submit ideas to the Minister of Land relative to the KwaZulu Land Bill and, along with members of the Legal Resources Centre as well as the Centre for Applied Legal Studies, formed two working groups, one to offer principles for the legislation on communal tenure and one to frame interim protection of fragile tenure rights.

*Welfare and Health*

Francie Lund and Libby Ardington reworked data on over 5000 households in KwaZulu-Natal to investigate how social pensions combat poverty and operate as a complementary track to other programmes of reconstruction and development. A number of small studies under their tutelage are underway to inquire into intrahousehold distribution of pensions.

*Welfare and Health*

Francie Lund also completed an assignment set by a Dutch foundation to assess the situation of working children in South Africa. Later in the year she convened with the national task group to write policy on health and welfare policy for elderly South Africans. Zarina Patel and Francie are participating in the Health Systems Trust Project for the dissemination of health information in South Africa.



The Annual Health Review will appear in 1995.

Valerie Møller continued to pursue research interests in *gerontology*. She acted as guest editor of a special issue of the *Journal of Southern African Gerontology* on intergenerational relations which features articles by international experts and local academics and introduces local researchers to intergenerational issues related to development and equity. Her introductory chapter reviews her earlier study of three-generation township households and outlines a research agenda for intergenerational studies in Southern Africa.

Francie Lund and Valerie Møller contributed to a paper on the profile of the black South African elderly which was read at the International Association of Gerontology Meeting held in Georgia, USA.

***Rural/Urban linkages***

Libby Ardington's longitudinal research in the Nkandla area of KwaZulu-Natal revisited 70 households previously surveyed in 1982 and 1985. The study concentrates on changes which have occurred in this rural community over more than a decade due to vicissitudes of drought, the recession, the repeal of influx control legislation, the role of pensions, local government and access to the state.

*Indicator SA* published a book on informal settlements in KwaZulu-Natal compiled by colleagues at the University of Durban-Westville. *Here to Stay* draws on wide-ranging research efforts in the region by numerous governmental, political and NGO bodies. Simon Bekker served on the committee which launched the research project and on the steering committee. The volume is edited by *Indicator SA*'s Karen Mac Gregor and contains several original contributions from CSDS staff: Catherine Cross, Simon Bekker and Craig Clark on migration trends into the Durban Functional Region, Catherine Cross

on tenure issues, Antoinette Louw with Simon Bekker on conflict issues, Mike Morris on power relations in informal settlements and Craig Clark with Simon Bekker on capacity building. Rob Evans did the layout and prepared what may be the first comprehensive index of informal settlements in the KwaZulu-Natal.

RUSU hosted a workshop to present research findings on the availability of training for rural community development in the KwaZulu-Natal region. This research was undertaken on behalf of the School of Rural Community Development at the University of Natal, Pietermaritzburg.

Mike Morris continued his research with Doug Hindson on the socio-economic structure of the Durban Metropolitan area.

### *Studies in Conflict*

The Conflict Trends in Natal Project which was initiated in 1991, monitors long-term trends in political conflict in KwaZulu-Natal from 1986 to the present and creates a unique computerised database. Antoinette Louw assisted by Eyvonne Cuddumbey are in charge of the database. Paulus Zulu continues to engage in a violence monitoring project together with Mary de Haas from the Anthropology Department, University of Natal, Durban.

As of 1994 *Indicator SA* published a Conflict Supplement edited by Antoinette Louw. The Supplement carries data compiled by the Conflict Trends in Natal Project, case studies, and analysis by researchers around the country of ongoing political violence in Natal and South Africa. From 1995 the supplement will become "Crime and Conflict" and will cover all aspects of crime and violence in South Africa.

Mike Morris pursued his research interests in conflict

studies and class differentiation with Doug Hindson from ISER at the University of Durban-Westville.

### *Youth Studies*

The report on South African youth prepared by the HSRC Cooperative Youth Programme was published late in 1994. Several CSDS researchers had contributed to the research effort. Craig Clark, Catherine Cross, Bonga Mlambo and Valerie Møller participated in the research programme. Paulus Zulu was responsible for coordinating reporting on education issues. The book will have a major influence on youth policy.

Valerie Møller together with Theresa Mthembu and Robin Richards traced the informal youth clubs which had participated in their research and development project during the late eighties to assess the potential of clubs for youth development. On a larger scale Robin Richards and Valerie Møller together with Richard Devey, are assisting the South African Association of Youth Clubs to set up a live database of youth clubs nation-wide. The purpose is to twin youth projects across regions, aid communication and facilitate leadership training.

### *Networking*

One of the features of South Africa's transition is the number of development forums and programmes committed to empowerment of disadvantaged groups and to capacity building. Senior staff in CSDS are active participants, commissioned researchers or consultants in numerous initiatives including: CHES; Council for the Environment; Consultative Forum on Drought and Rural Development; Consultation Group on the Development Facilitation Act; HSRC Cooperative Youth Programme; Human and Natural Resources and the Environment Committee HSRC; Joint teams preparing legislation on the communal tenure and threatened tenure rights; KwaZulu-Natal Regional Economic Forum; Land and Agricultural Policy Centre; Land & Agricultural Working Group;

## *Networking*

Local Agenda 21; National Telecommunications Forum; Regional Research Facilitation Facility; Social Science Studies Project; Southern African Association of Youth Clubs; ThuThuka Community Engineering and Development.

Furthermore, research staff attempt to deliver their research products to as broad a range of recipients as possible through *Indicator SA* which achieves some fifty annual citations for new research findings from CSDS and Natal University in the national press, radio and television.

## *Educational Outreach and Training*

Centre staff are involved in several outreach initiatives: A University Preparation Programme is offered as a bridging course for about 200 educationally disadvantaged students; staff participate in the Community Service Training Programme (CSTP) teaching modules to trainees; The Maurice Webb Race Relations Unit undertakes an ongoing affirmative action programme to train researchers enrolled in postgraduate studies, and with the assistance of the CSDS secretariat, to train administrative interns (sponsored by CSTP).

Teaching and supervision at our university and other South African universities forms an important supplementary role of the Centre. We offer workshops, teach modules, contribute to courses on research methodology, social policy and theory in sociology, social work, industrial and labour studies, town and regional planning and economic history.

In 1994 RUSU and the Department of Land Surveying at the University of Natal jointly organised a Winter School course for land surveyors. Catherine Cross and colleagues in RUSU taught modules on urban and rural tenure for the course and Simon Bekker summed up at the end of the course. The course exposed land surveyors, members of

community groups and NGOs to new land dispensation issues as they affect day to day practice.

### *Saturday School*

The Saturday School run by Paulus Zulu and staff from the Maurice Webb Race Relations Unit is a joint effort with the South African Black Workers Association. The project started in 1986. It is now in its eighth year and is attracting some 1200 high school pupils who attend class every Saturday.

An exciting new project launched by the Maurice Webb Race Relations Unit in 1994 is the brainchild of Cynthia Mpati, a teacher at Umlazi College and Paulus Zulu. The project will build on the experience gained from Paulus' successful Saturday School and Mrs Mpati's involvement as coordinator of a programme to upgrade teacher qualifications. The programme will draw in mainly academics and students from the University of Natal and Springfield College of Education. A pilot project with 120 students who performed poorly in their matric examinations is already in progress. Students will receive special tuition in communication, maths and calculus, and environmental studies.

### *School of Development Studies*

As of the end of 1994, teaching by senior staff in CSDS will concentrate on courses offered in the new interdisciplinary School of Development Studies. Mike Morris is Acting Director of the School of Development Studies and has been involved in initiating the school and launching the Master's Programme which will commence in 1995. The course has already attracted more applicants than it can accommodate and will operate to full capacity next year. Over 20 students will be enrolled as Masters students in 1995. By design the programme combines economics, politics, sociology, geography and planning to help students address the new policy challenges in South Africa. The teaching and research curriculum will focus on providing technical skills as

well as analytical tools for evaluating comparative development experiences. The School offers a postgraduate programme leading to Masters and Doctoral degrees. The Masters degree is completed in one or two years depending on the student's academic background. The basic course covers international and South African development problems and policies, planning and management in organisational settings, and research methods for development issues. Specialist streams offered to students will include: urban development, regional economic development, economic development, gender and development, development and social policy, and rural development.

### ***Quality Control in Research***

Apart from editing activities, senior staff in CSDS reviewed over twenty papers for refereed journals including *Development Southern Africa*, *South African Journal of Sociology*, *Southern African Journal of Gerontology*, and *Transformation*. They also assisted with assessing applications for research and travel grants.

### ***International Meetings***

Several CSDS staff travelled abroad to participate in international meetings:

- \* Simon Bekker attended a conference on ethnicity and nationalism held in London as lead-in discussant.
- \* Francie Lund was one of five invited speakers at an International Research Seminar on Social Security in Sigtuna, Sweden. She also acted as external examiner of the University of Manchester/ University of Witwatersrand Programme for Organisation Development in South Africa and attended their board meeting in Manchester, UK.
- \* Mike Morris went to an International Conference in Prague in December 1993 and then followed this with visits in the new year to a number of Development Research Institutions in the UK to

create international links for the School of Development Studies.

- \* Valerie Møller met with gerontology practitioners in Beijing while on long leave in January. Later in the year she presented two papers on time use and life satisfaction and educational motivation and achievement resulting from her study of three generation township families at the XIII World Congress of Sociology held in Bielefeld, Germany.
- \* Immediately before joining CSDS, new junior research fellow Zarina Patel attended an international conference on sustainable cities, Global Forum '94 held in Manchester, United Kingdom.
- \* A rare honour was bestowed on Paulus Zulu when he was invited to serve on the prestigious Pontifical Academy of Social Sciences and attend an audition with the Pope. In November he travelled to Rome to participate in the Academy's first meeting and to personally receive his insignia of office from the Pope. Members of the Academy will be involved in policy research.

### ***Indicator South Africa***

Indicator SA, the independent publishing unit based in CSDS produced four quarterly bulletins featuring articles written by academics from universities around the country. Indicator SA held a breakfast briefing in October at which Professors Robert Schrire and Lawrence Schlemmer and Dr Siphon Nwayo spoke on regional and national issues to 120 local private and public sector leaders. Indicator Press was established and produced the book *'Here to Stay: Informal Settlements in KwaZulu-Natal'* in December. The book has sold extremely well.

At an urbanisation symposium early in 1991, CSDS was requested to organise a series of open seminars on urban issues. A small Steering Committee was established to select speakers and these seminars have continued successfully since then. In 1994 it was felt that there was a need for public debate on current salient issues in KwaZulu-Natal so two or more speakers were invited to each seminar to express a point of view:

- 1 **Professor J van Dellen** and **Dr Selvan Saman** discussed *'The need for an Academic State Hospital'*.
- 2 **Richard Clacey**, **David A'bear** and **Dr Tessa Marcus** discussed *'Development issues in rural South Africa: some case studies in varied contexts'*.
- 3 **Peter Corbett** and **Margaret Winter** discussed *'The Establishment of metropolitan government in Durban: quo vadis?'*.
- 4 **Dr George Hughes** and **Mr Jeremy Ridl** discussed *'Environmental management in KwaZulu-Natal: Ideas for new structures'*.

---

**7 JILL NATTRASS VISITING FELLOW SEMINARS**

---

- 1 **Professor Gillian Hart** who is based at the University of California at Berkeley where she teaches development, regional and labour studies in the Department of City and Regional Planning, presented a paper in November entitled: *'From spatial engineering to local initiatives? Industrial dynamics in north western KwaZulu-Natal'*.
- 2 **Dr Solofo Randrianja** who is Maitre Assistant (Assistant Professor) at the Department of Historical Studies, University of Tamatave, Madagascar where he teaches undergraduate and postgraduate courses in political and social history, presented a paper in October entitled: *'Ethnicity in Natal: some reflections from outside'*.



**Ms Jane Bartlett** and **Mr Chris Edwards** from the Overseas Development Group at the University of East Anglia gave a seminar in CSDS on the structure of the ODG, the Courses they run and financial management of the ODG in association with the University of East Anglia.

**Mr Rod Crompton** from the Industrial Strategy Project and Chemical Workers Industrial Union was situated at CSDS for a few months working on policy implications for the South African chemical industry. He gave two internal CSDS seminars on liquid fuel and the chemical industry.

**Mr Markku Malkamäki**, a PhD student from the University of Manchester's Institute for Development and Policy Management spent a few months at CSDS researching urban food provisioning and food security in the Greater Durban area.

**Professor William Munro** from Northwestern University, USA was in the department from July to December whilst looking into rural investment and land politics.

**Mr Richard Reynolds**, a 'Micro-enterprise Finance' PhD student from Cranfield University in the UK was based at CSDS whilst conducting research in Cato Crest and presented a paper at a CSDS seminar on '*An examination of the role of hire purchase in informal settlements in Durban*'.

**Ms Jo Thorpe** continued to use CSDS as her base while writing on development of African art and craft in KwaZulu-Natal as seen in the African Art Centre in the period 1960-1990. She initiated the African Art Centre when she was Regional Secretary for the South African Institute of Race Relations and was the Art Centre's co-ordinator until 1991.<sup>1</sup>

<sup>1</sup> Jo Thorpe passed away unexpectedly on February 18, 1995. The work on her book was completed and she was busy making final touches and writing to potential sponsors to publish the work. Friends in CSDS helped organise the memorial service conducted by Archbishop Dennis Hurley to honour Jo and her life's work. CSDS will miss Jo and her artworks sorely. Her book will be published posthumously in 1995 by *Indicator Press*.

---

**ARTICLES IN REFEREED JOURNALS**

- Hindson D, Byerley M & Morris M, From violence to reconstruction: the making, disintegration and re-making of an apartheid city, **Antipode**, 26 (4), 1994, 323-350
- Lund F, A window on welfare: some results from a study of government welfare departments, **Social Work/Maatskaplike Werk**, 30 (1), 1994, 25-41
- Møller V, Intergenerational relations: A South African research agenda, **Southern African Journal of Gerontology**, 3 (2), 1994, 1-4
- Møller V, Intergenerational relations in a society in transition: A South African case study, **Ageing in Society**, 14, 1994, 155-189
- Møller V & McCallum K, Time use of the elderly: A practical application of time budgets in a South African setting, **Southern African Journal of Gerontology**, 3 (1), 1994, 13-21
- Møller V, Mthembu T & Richards R, The role of informal clubs in youth development: A South African case study, **Journal of Social Development in Africa**, 9 (2), 1994, 5-29
- Morris M & Gourley B, The challenges facing South African Universities, **IDS Bulletin**, 25 (1), 1994, 59-61
- Solarsch G, Sanders D, Gibson C & Gouws E, Community-based survey versus sentinel site sampling in determining the nutritional status of rural children: Implications for nutritional surveillance and the development of nutritional programmes, **South African Medical Journal**, 84 (11), 1994, 747-752

**WHOLE BOOKS, CONTRIBUTIONS TO WHOLE BOOKS**

- Bekker S, Ethnicity eclipsed: Recent studies on South Africa, **Political Power and Cultural Identity in Africa**, T Foster (ed), University of Beyreuth, 1994
- Bekker S & Louw A, Conflict and migration in KwaZulu-Natal, **Here to stay. Informal settlements in KwaZulu-Natal**, Hindson D & McCarthy (eds) Indicator Press, Durban, 1994
- Cross C, Shack tenure in Durban, **Here to stay. Informal settlements in KwaZulu-Natal**, Hindson D & McCarthy J, (eds) Indicator Press, Durban, 1994

- Cross C, Bekker S & Clark C, Migration into the Durban Functional Region Informal Settlements: An Overview of Trends, **Here to stay. Informal settlements in KwaZulu-Natal**, Hindson D & McCarthy J, (eds) Indicator Press, Durban, 1994
- Lund F, De la mobilisation de l'identite: paradoxes des politiques sociales dans les bantustans, **L'imagerie Identitaires en RSA**, D Darbon (ed), Paris, Karthala, 1994
- Lund F, Some designs for research projects for policy and planning in the welfare field, **Transforming Social Welfare Policies and Processes**, C Jinabhai & J Meharchand (eds), HSRC, Pretoria, 1994
- Møller V, **Township youth and their homework**, HSRC, Pretoria, 1994
- Morris M & Zulu P, First experiences of democratic elections, **Special Update: Founding Democracy & the New South African Voter**, L Schlemmer & I Hirschfeld (eds), HSRC, Pretoria, 1994
- Morris M & Zulu P, The way ahead: reducing the level of violence, **Special Update: Founding Democracy & the New South African Voter**, L Schlemmer & I Hirschfeld (eds), HSRC, Pretoria, 1994
- Morris M & Hindson D, Power relations in informal settlements, **Here to stay. Informal Settlements in KwaZulu-Natal**, Hindson D & McCarthy J (eds), Indicator Press, Durban, 1994
- Zulu P, Third force operations in South Africa, **The Hidden Hand: Covert Operations in South Africa**, Minaar A, Schutte C and Liebengeng I (eds), HSRC, Pretoria, 1994

## OTHER JOURNALS AND PUBLICATIONS

- Ardington E M, Quantitative analysis of socio-economic data from five thousand households in KwaZulu. A secondary analysis of data from an income and expenditure study, **CSDS Research Report**, 4, 1994
- Ardington E M & Lund F, **Pensions and development: the social security system as a complementary track to programmes of reconstruction and development: A secondary analysis of data from a survey conducted in KwaZulu in 1992**, Policy paper prepared for the Development Bank of Southern Africa, 1994
- Auerbach R, Sustainable Development. Developing what to sustain whom?, **New Ground**, Autumn, 1994

- Bekker S, **The relationship between conflict and migration in the informal settlements of KwaZulu-Natal**, Report for the University of Durban-Westville Informal Settlements Programme, 1994
- Bekker S & Cameron R, **Course evaluation, Impact evaluation: Project Management** - for local government course: Cape Town, Rustenberg, Durban and Port Elizabeth Courses, 1994
- Bekker S, St Lucia: What rules for the referee? **Indicator South Africa**, 11 (2), 1994
- Bekker S & Lenon S, Environment and Development, **Indicator South Africa**, 12 (1), 1994
- Biggs S, Ferreira J, Lund F J & Martin A, **An Evaluation of the Land Development Unit**, Report commissioned by the Overseas Development Administration, 1994
- Clark C & Bekker S, **Capacity building in the civic movement in the informal settlements of the Durban Functional Region**, Report for the University of Durban-Westville Informal Settlements Policy Research Programme, 1994
- Cross C, **Shack tenure in the Durban area**, Report for the University of Durban-Westville Informal Settlements Policy Research Programme, 1994
- Cross C, Bekker S & Clark C, **Migration into the informal settlements of the Durban Functional Region: An overview of trends**, Report for the University of Durban-Westville Informal Settlements Policy Research Programme, 1994
- Cross C, Clark C & Bekker S, **Promoting transparency: Community development funding and the politics of accountability**, Project Report submitted to the Department of National Health and Population Development, 1994
- Cross C, Zulu P, Luckin L, Mzimela T, McIntosh A & Salimane J, **Natural Resources Management Project**, First Interim Progress Report for the Land and Agricultural Policy Centre, Bulwer Zonal Study, Natal Midlands Region, 1994
- Cross C, **Submission on the Ingonyama Land Act: Chiefship and Control of Land in former KwaZulu-Natal under new Land Legislation**, Report to the Ministry of Land, 1994
- de V Minnaar A, Bekker S, Wentzel M, Torres S, Pretorius S, Louw A, Ki A & Keith T, **An analysis of the scope and extent of political conflict in South Africa with specific reference to the**

- identification of high-conflict areas, Report for the Independent Electoral Commission, 1994
- Hattingh P S, Bekker S & Bruinette K E, **Province of Eastern Transvaal: Proposal for a Provincial Capital**, Report published by Department of Geography, University of Pretoria, 1994
- Louw A, Ending violence in Natal, Interview with Frank Mdlalose, **Indicator South Africa Conflict Supplement**, 11 (3), 1994
- Louw A, Conflicting views, **Indicator South Africa Conflict Supplement**, 11 (3), 1994
- Louw A, Conflicts of interest. Overview of conflict in KwaZulu-Natal from 1989-1993, **Indicator South Africa Conflict Supplement**, 11 (2), 1994
- Louw A, Zuma on violence, **Indicator South Africa Conflict Supplement**, 11 (2), 1994
- Lund F J, **Working Children in South Africa**, An assignment conducted for Stichting Doen, 1994
- MacGregor K, What Sexwale says, **Indicator South Africa Conflict Supplement**, 11 (2), 1994
- MacGregor K, Home alone, **Work in Progress**, 95, 1994
- MacGregor K, Hard road to normality, **Times Education Supplement**, 4087, 1994
- MacGregor K, Ground rules for a clean society, **Times Education Supplement**, 4087, 1994
- MacGregor K, Rafferty F, A long way home, **Times Education Supplement**, 4087, 1994
- MacGregor K, Dawn of democracy, **Times Higher Education Supplement**, 3989, 1994
- MacGregor K, Exiled and imprisoned elite comes to political power, **Times Higher Education Supplement**, 3989, 1994
- MacGregor K, Hit list to electoral list, **Times Higher Education Supplement**, 3989, 1994
- MacGregor K, Equality blueprint is a black and white issue, **Times Higher Education Supplement**, 3989, 1994
- MacGregor K, The promised land, **Sunday Tribune**, 9/10/94, 1994
- MacGregor K, Call for drastic changes in KwaZulu-Natal, **Natal Mercury**, 7/11/94, 1994
- Møller V, Post election euphoria, **Indicator South Africa**, 12 (1), 1994
- Morris M & Hindson D, The social structure and dynamics of metropolitan Durban, **CSDS Working Paper**, 13, 1994

- Morris M & Hindson D, *Violencia politica, Reformatory reconstruction en Sudafrica*, **Contenido**, 130, 1994
- Morris M, **Violence in Natal/KwaZulu: dynamics, causes, trends**, Report for the University of Durban -Westville Informal Settlements Policy Research Programme, 1994
- Morris M & Hindson D, *The Wild Card*, **Indicator South Africa**, 11 (2), 1994
- Oosthuizen G C & Clark C, **The development activities of African Independent Churches**, Report for the University of Durban-Westville Informal Settlements Policy Research Programme, 1994
- Patel Z & Ballard R, **Training for empowerment: Training needs of rural communities of KwaZulu-Natal and social empowerment**, Report commissioned by the Centre for Rural and Technical Education, 1994
- Patel Z, **Environmental considerations for the development of Cato Manor**, Report for the Durban City Council, 1994
- Williams G, *Land and Freedom*, **CSDS Working Paper**, 12 1994
- Zulu P, *The work begins*, **Towards Democracy: Journal of the Institute for multi-party democracy**, Second quarter, 1994
- Zulu P, *DP can't sell liberalism to most (black) voters*, **The Weekly Mail & Guardian**, February 18-24, 1994
- Zulu P & Mlambo B, **Needs assessment in the Southern Natal Hinterland**, Report for the Southern Natal Joint Services Board, 1994

## PAPERS GIVEN AT CONFERENCES

- Bekker S, *Conflict migration and the land ethic in the informal settlements of the Durban Functional Region (DFR). An exploratory analysis*, Workshop for the Value Studies Network, Gordon's Bay, South Africa, 1994
- Bekker S, *Social Structures and the Reconstruction and Development Programme (RDP)*, Forestek Workshop, CSIR, Pretoria, South Africa, 1994
- Bekker S, *Migration and urbanisation*, Department of National Health and Population Development Seminar on Demographic realities in South Africa: Quo Vadis, Pretoria, South Africa, 1994
- Crompton R, *Policy options and implications for the South African chemical industry*, Fourth biennial conference of the Institute of Chemical Enquiries, Johannesburg, South Africa, 1994

- Crompton R, ANC policy intentions and implications for small tonnage chemical procedures, Address to the Small Tonnage Interest Group of the South African Institute of Chemical Engineers, Johannesburg, South Africa, 1994
- Cross C, Common property principles in accommodating prevailing land practice, Submission to drafting seminar on communal tenure legislation, Pretoria, South Africa, 1994
- Lund F, Social security for disabled people in South Africa: challenges facing the new society, International Research Seminar on Issues in Social Security, Sigtuna, Sweden, 1994
- Møller V, Life-style for healthy ageing: elders in three-generation urban black households, HSRC/Centre for Gerontology Seminar on Healthy ageing: concepts and measurement in developing and developed countries, Observatory, South Africa, 1994
- Møller V, Motivations for action: intergenerational relations and time use in urban black South African households, XIII World Congress of Sociology, Bielefeld, Germany , 1994
- Møller V, Contribution of the older worker to the economy of South Africa, Workshop - Older person: undervalued potential, Pretoria, South Africa, 1994
- Møller V, The home environment and educational motivation and achievement: A case study of black South African high school pupils, XIII World Congress of Sociology, Bielefeld, Germany, 1994
- Morris M, Summary of findings and policy analysis of minimum service delivery to meet basic needs in black urban and peri-urban settlements in KwaZulu-Natal, KwaZulu-Natal Economic Workshop, Durban, South Africa, 1994
- Morris M, Rural telecommunications: the installation of community telephones, Telecommunications for rural and township communities Conference, Johannesburg, South Africa, 1994
- Patel Z, Sustainable development implications for the urban poor, Student Geographical Conference at the University of Durban-Westville, Westville, South Africa, 1994
- Patel Z, Sustainable environmental development cities. How can school projects contribute? Workshop for the Durban Environmental Education Centre, Durban, South Africa, 1994

## REFEREED CONFERENCE PROCEEDINGS

Bekker S, Social Structures and the Reconstruction and Development Programme (RDP), Towards defining the role of the CSIR in the Reconstruction and Development Programme (RDP), Forestek, CSIR, 1994





This work is licensed under a  
Creative Commons  
Attribution – NonCommercial - NoDerivs 3.0 License.

To view a copy of the license please see:  
<http://creativecommons.org/licenses/by-nc-nd/3.0/>

This is a download from the BLDS Digital Library on OpenDocs  
<http://opendocs.ids.ac.uk/opendocs/>