



Discussion paper
No. 2012–4

Comparative analysis of data frameworks for agricultural policy analysis

The WTO-notifications and the OECD's PSE database

*Klaus Mittenzwei*¹

*Tim Josling*²

¹Norwegian Agricultural Economics Research Institute
Post box 8024 Dep
NO-0030 OSLO
NORWAY

Corresponding author: klaus.mittenzwei@nilf.no

²The Europe Center, The Freeman Spogli Institute for
International Studies (FSI), Stanford University, USA

This version: April 2012

(Please do not quote without permission from the authors.)

Copyright © by Mittenzwei and Josling. All rights reserved. Readers may take verbatim copies of this document for noncommercial purposes by any means, provided that this copyright notice appears on all such copies.

Papers in this series are meant for stimulating discussions. The authors would welcome all kinds of responses to this paper. The interpretation and conclusion in this paper are those of the authors.

This discussion paper may have been submitted to a journal and have entered the journal's review process.

Should the journal decide to publish the article the paper no longer will have the status of a NILF Discussion Paper and will be withdrawn from this website. From then on a link will be made to the journal in question referring to the published work and its proper citation.

Copies of this discussion paper are available at

http://www.nilf.no/publikasjoner/Discussion_Papers/2012/dp-2012-04.pdf

Abstract

Both the OECD and the WTO have accumulated systematic data on the magnitude of support going to farmers as a result of farm policies. The datasets are collected for different purposes but both give a detailed picture of the evolution of these policies. This paper extends recent work on the compatibility or otherwise of these two attempts at policy monitoring by considering the categorization of individual policy instruments in Norway, Switzerland, the US and the EU. The results show how the OECD data set, particularly with respect to the link between direct payments and production requirements, complements that of the WTO. Many payments classified as in the WTO Green Box require production, raising the possibility that they may not be trade-neutral. Though the issue of correct notifications to the WTO is the province of lawyers the implications for modeling and policy analysis is more interesting to economists. And the broader question of improving the consistency of the two datasets is of importance in the quest for transparency.

Keywords:

policy analysis, WTO-notifications, PSE-calculations, farm policy reform

1. Introduction

Most developed nations support their agricultural sectors to achieve desired objectives that range from protecting farm incomes to ensuring food supplies. In recent years these aims have been joined by those of improving environmental quality, maintaining agricultural landscapes and promoting social benefits considered to be provided by the farming sector. In this respect, understanding the variety and complexity of agricultural policies as well as their economic, environmental and impact on society is a necessary prerequisite for rational decision-making in agriculture. The measurement and classification of agricultural support is important in establishing a consistent framework across countries that can then be used to analyse their impacts on economic and social objectives.

The two most widely used accounting frameworks that systematically categorize and monitor agricultural policies are the Organisation for Economic Cooperation and Development's (OECD) Producer Support Estimate (PSE) and the World Trade Organisation's (WTO) notification system for market access, domestic support and export subsidies to the WTO Committee on Agriculture (CA).¹ The PSE-concept emerged in the 1980s as an approach to categorize agricultural policies and measure transfers to producers from consumers and taxpayers. The PSE framework has undergone considerable changes, taking into account recent developments in the nature of agricultural policies caused by agricultural policy reforms. An important motivation for these changes has been the OECD's focus on reflecting in the framework member countries' use of decoupled payments, environmental programs and other policies to achieve public benefits provided by the agricultural sector. The WTO-notifications of domestic support are mandated by the 1995 Uruguay-round Agreement on Agriculture and were established as an instrument to monitor WTO-member compliance with their legal commitments. In this respect, the WTO-notifications of domestic support have been focused on the production and trade distortion aspects of agricultural policies, but have not been so concerned with the provision of public goods or the way in which direct payments are implemented.

Despite the well-understood differences in purpose, scope, coverage and methodology, the two frameworks have an underlying aim in common: Providing information for classifying, monitoring and comparing the development of agricultural policies and policy reforms across countries. However, recent works (Orden *et al* 2011, Effland 2011) have shown that comparing the two frameworks yields surprisingly different results with the potential to confuse policy makers and others interested in agricultural policies – losing much of the transparency for which both were originally created. The emphasis in Orden *et al.* (2011) has been on the treatment of market price support. We find that equally confusing is the classification of policy instruments such as direct payments and in particular their links with production. Effland (2011) focuses on the comparison of the two databases using the US as an example. In that study the totals of sub-groups within the two databases are compared. This paper

¹ Not all commentators accept these two frameworks as totally satisfactory. Momagri (2011) presents a recent attempt to develop a new accounting framework for agricultural policies. The use of monitoring frameworks for policy analysis in this paper is not to be confused with studies that attempt to estimate policy impacts and social costs and benefits. Neither the PSE framework nor the WTO notifications indicate whether the policies are economically sensible or socially desirable.

drives the analysis a step further by making the single support measure the unit of comparison. In particular, our study makes an attempt to establish a correspondence between policy instruments listed in the PSE-database with its counterpart in the WTO-notifications.² Due to differences in coverage and reporting practices, an exact one-to-one correspondence of policy instruments between the two systems is the exception rather than the rule. The approach allows us to look more closely into the details of the policy classifications of these subsidies with a view to shedding light on the different interpretations of the process of reform in selected OECD countries. In particular, the approach allows us to analyze to what extent policy instruments notified as minimally trade distorting in the WTO green box are considered as depending on production by the OECD. As the process of matching single policy instruments is a detailed endeavor we test our approach on two small countries, Norway and Switzerland, that provide a fairly high level of agricultural support and use a large variety of policy instruments. In addition, we chose to include the European Union (EU) as a major trading partner and as the most interesting case of radical change in policy instruments in the past twenty years, and the United States (US) as the country where reform has been intermittent.

In addition to the comparison, we also present so-called 'pre notifications' of WTO domestic support categories based on the PSE database.³ This gives a glimpse of how not-yet-published notifications of domestic support might look like using the PSE database as the main source of information. The motivation for such pre notifications is threefold. First, it addresses the issue of the delays in notification to the WTO. There has been at times a significant time-lag in the notification of domestic support. Second, the exercise allows us to show more clearly the similarity between the WTO-approach and the OECD-approach. Third, the pre notifications demonstrate that the PSE-database can be used to produce WTO notifications using a rather limited amount of resources.⁴

A third source of information on agricultural policies, which has been less emphasized in the literature, is the WTO-notifications on subsidies and countervailing measures. These notifications cover all subsidies as defined by the WTO in all sectors of the economy, agriculture included. Therefore, agricultural subsidies are not only subject to notification to the Committee on Agriculture, but also come under the rules of the Committee on Subsidies and Countervailing Measures (SCM). These notifications include *inter alia* agricultural subsidies and it is possible to make a comparison between the activities of the two WTO committees that review agricultural policies. However the SCM notifications do not constitute a

² Burfisher *et al.* (2001) have undertaken a similar analysis for a variety of OECD member countries for the year 1998. Their purpose was to analyse AMS reductions and they needed to rely on the PSE-database as the WTO-notifications were in many cases delayed.

³ The chapter authors in Orden *et al.* (2011) provide pre WTO notifications based on projections of the data used in the official notifications. Our approach is to base pre-notifications on actual OECD data. To the extent that the official notifications are consistent with OECD data the results should be similar.

⁴ This conclusion is at odds with a comment in a footnote in Collins-Williams and Wolfe (2010) where the authors state that they are not convinced that the PSE database has any relevance to the WTO notifications. We hope that this paper may address their concerns.

database as such, and contain mostly qualitative descriptions of policies. There is a lack of a consistent structure in these notifications that has been noticed by other commentators⁵. We will refer to the SCM notifications where appropriate but not consider it as third dataset in its present form.

By examining the treatment of individual support measures the comparison of the two data sets allows us to compare the frameworks' strengths and limitations with respect to providing a knowledge base for monitoring, evaluation and assessment purposes. One conclusion of the study is to suggest that the coordination between the WTO and the OECD data series may lead to a better understanding of the two concepts and improve the overall quality of the two databases.

The remainder of this paper is organized as follows. The next section presents the method by which individual support measures were matched in the the two accounting frameworks. Section 3 presents the results of the comparison of the categories of support for Norway, Switzerland, the US and the EU, as well as the 'pre notifications' of domestic support based on the PSE database. The last section interprets the results, puts forward some preliminary policy conclusions and sets out some suggestions for future research.

2. Data and Method for Comparison of Support Classification

The data used in this study are publicly accessible from the OECD's website (www.oecd.org) regarding the PSE-database and from the WTO's website (www.wto.org) regarding the notifications of domestic support to agriculture. While the PSE-database starts from 1985, WTO-notifications exist from 1995 onwards. The period 1995 to 2009 was chosen as this includes the range of available years that allow comparison of both databases.⁶ Both databases list the name of the policy instrument and the annual value of support related to it, though there are variations in the description of the policy instrument.⁷

The method of comparison is to examine the way in which individual policy instruments are classified in the two frameworks. The OECD provides a 'cookbook' for each country that explains the data sources and contains a short description for each policy instrument. That is in part due to the fact that the OECD secretariat is responsible for creating the database, although it is the OECD member countries that are responsible for the accuracy of the data and have to agree to the final publication. The process that leads

⁵ In this connection a suggestion has been made to improve the notification of subsidies to the SCM Committee (Steenblik and Simon 2006)

⁶ In the case of the EU we include notifications up to 2007/08.

⁷ The EU notifies to the WTO its support for the marketing year (1 July – 30 June), while the OECD uses the fiscal year (1 November – 31 October) for budgetary outlays and the calendar year for prices. As the OECD allocates payments and levies in the fiscal year $t+1$ to the PSE in the year t , we also opted to compare the EU's notifications of the marketing year $t+1$ with the PSE in the year t . For example, 2006 refers to fiscal year 2007 and marketing year 2006/2007. The Swiss PSE is reported on the fiscal year basis, which corresponds to the calendar year. No such information is provided for Norway. Both countries' notifications are reported on a calendar year basis. We assume therefore that the WTO-notifications and PSEs for Switzerland and Norway are directly comparable.

to the final database, including the discussions between the Secretariat and its members on what policy instruments to cover and how to categorize them, is not made public and hence lacks transparency. The final PSE numbers are published on an annual basis resulting in an updated database with a short time-lag. The database is also current and is available on the OECD website.

Compared to the OECD, the WTO secretariat plays a rather passive the role of a facilitator of the notification of support levels. The notification procedure was laid down in the early days of the CA (WTO, 1995). The secretariat does not provide a country-specific cookbook. Rather it has made available a “technical cooperation handbook” that can be used by government officials to conform to the notification requirements (WTO 1996). These rules consist of a set of tables that specify what data to notify and how to present it in a way that other countries can understand the calculations. The WTO secretariat can make requests of Members for information related to the notifications but the responsibility for the submission lies squarely with the Members themselves (Brink 2011). The WTO makes publicly available both the notifications on agriculture and the notifications on subsidies and countervailing measures collected by its member countries. These notifications undergo a review process and are discussed in the respective committees. The minutes of these meetings as well as the questions and responses put forward by members are published by the WTO. Hence, there seems to be more openness regarding the procedures and processes that lead to the final result. Although the notification rules foresee notifications to be submitted “*no later than 60 days following the year in question*” (WTO 1995), this rule has been frequently broken by almost all major WTO members. Serious concerns have arisen among members, as the notifications are intended to the review of members’ implementation of commitments, and this has led to discussions on how to improve notification procedures (Brink 2011).

Table 1. Definition of categories in the OECD PSE support classification system

PSE	
A1	Market price support
A2	Output payments
B1	Variable input use
B2	Fixed capital formation
B3	On-farm services
C	Current A/An/R/I ¹⁾ , production required
D	Non-current A/An/R/I ¹⁾ , production required
E	Non-current A/An/R/I ¹⁾ , production not required
F	Non-commodity criteria (long-term resource retirement (F1), a specific non-commodity output (F2), other non-commodity criteria (F3))
G	Miscellaneous payments
GSSE	
H	Research and development
I	Agricultural schools
J	Inspection services
K	Infrastructure
L	Marketing and promotion
M	Public stockholding
N	Miscellaneous payments
Relevant part of CSE	
Q1	Commodity specific transfers to consumers from taxpayers
Q2	Non-commodity specific transfers to consumers from taxpayers

¹⁾ Area, number of animals, farm receipts or farm income

Source: OECD (2011)

Table 1 shows the categories of the PSE-database. It includes three different components: the 'traditional' PSE containing transfers received by farmers from consumers and taxpayers, the GSSE (General Services Support Estimate) that lists measures to support general services provided to agriculture and financed by taxpayers, and the CSE which covers transfers from consumers to producers and from taxpayers to consumers. The 'traditional' PSE is the most commonly used measure in the PSE-database. We include the GSSE and those parts of the CSE where the support covered in these categories is reported in the WTO-notifications. The PSE-database contains nine categories of support for the PSE and seven categories for GSSE. The PSE includes transfers received by farmers from consumers and taxpayers, while the GSSE contains measures to support general services provided to agriculture and financed by taxpayers. The first two PSE categories (A1 and A2) contain payments linked to output, while the next three categories (B1, B2, and B3) cover payments based on input use. Market price support (MPS) is measured by the OECD using actual domestic and world market prices multiplied by eligible production. Hence, MPS measures the value of border protection applied to sustain the (positive) difference between the domestic price and the international price. Other PSE categories (C to E) cover

payments based on current or non-current acreage, animal numbers, receipts or income. Finally, there are categories for payments based on non-commodity criteria (F) and miscellaneous payments (G).

The GSSE is divided into seven groups (H to N) that range from research and development to infrastructure, marketing and promotion and other services. To simplify the presentation, we refer to these categories as PSE-categories H to N, although they are strictly speaking not part of the PSE but belong to the GSSE.⁸ For the EU and the US, it was necessary to include in the PSE/GSSE coverage several measures notified to the WTO that were identified as belonging to the CSE sub-groups Q1 (Commodity specific transfers from consumers to taxpayers) and Q2 (Non-commodity specific transfers from consumers to taxpayers). These included payments made to the processors of food in the case of the EU, while a large share of domestic food aid is recorded in the CSE for the US.

For the purpose of this analysis, we focus on the distinction between policy instruments for which production is required (PSE-categories A1, A2, B1, B2, B3, C and D) and those for which production is not required (PSE-categories E to N). This feature can be used as a first proxy as to whether the policy instrument is question distorts production and/or trade. Basically, if production is required, then it follows theoretically (and from empirical evidence) that production is distorted. And if production is distorted, so will be trade.

⁸ Depending on the context the term 'PSE' is used both to indicate the 'traditional' PSE (categories A to G) and to denote the total of PSE and GSSE (categories A to N).

Table 2. Definition of categories in the WTO-notification system

Aggregate Measurement of Support: Not exempt from reduction commitments		
Type	Program eligibility	Amount of payment
Market price support	Existence of administrative price	Gap between fixed external reference price and applied administrative price multiplied by eligible quantity of production and net of levies and fees
Non-exempt direct payment	All direct payments eligible to farmers and not exempt from reduction commitment	
Blue box: Exempt from reduction commitments		
Type	Program eligibility	Amount of payment
Direct payment	Subject to production-limiting program Payment based on fixed area and yield	
Direct payment	Subject to production-limiting program Payment are made on 85 per cent or less of the base level of production	
Direct payment	Subject to production-limiting program Livestock payments are made on a fixed number of head	
Green box: Exempt from reduction commitments		
Type	Program eligibility	Amount of payment
Decoupled income support	Income, status of producer or landowner, factor use, production level in a defined and fixed base period	Not related to or based on type or volume of production or prices or factors of production No production shall be required to receive such payments
Income insurance and income safety-net programs	Determined by income loss	Solely related to income Up to 70 per cent of income loss
Relief from natural disasters	Formal recognition by government authorities	Income loss or factors of production (incl. land and livestock) up to total loss
Structural adjustment - producer retirement	Facilitate total and permanent retirement of recipients from production	
Structural adjustment - resource retirement	Retirement of land (min 3 years) or other resources incl. livestock (e.g., slaughter) from production	Not related to type or volume of production (including livestock) or prices Limited to compensate structural disadvantage
Structural adjustment through investment aids	Facilitate the financial or physical restructuring of farm in response to structural disadvantages	Not related to or based on type or volume of production or prices or factors of production Limited to compensate for structural disadvantage
Environmental programs	Related to production methods or inputs and dependent on the fulfillment of specific conditions under the program	Limited to extra costs or loss of income involved in complying with program
Regional assistance programs	Limited to designated contiguous geographical areas with definable economic and administrative entity with more than temporary disadvantages	Not related to type or volume of production (including livestock) or prices Limited to extra costs or loss of income involved. If related to production factors, made at degressive rate
Other direct payments	Same as for decoupled income support	Same as for decoupled income support

Source: WTO (1994)

The WTO-notifications on domestic support distinguish between three categories (table 2): aggregate measurement of support (AMS), blue box and green box. AMS contains policy instruments that are considered to distort production and/or trade.⁹ They are further divided into two groups: 'Market price support (MPS)' and 'Non-exempt direct payments (Non-ex DP)'. MPS as measured by the WTO must not be confused with MPS as measured by the OECD (Orden *et al* 2011)¹⁰. The former represents the putative value of support as a result of the government setting an administrative price higher than the external reference price. There does not need to be a direct link between the administrative price and border protection, although in many cases border protection is used to sustain the administrative price. A major difference between the two measures is that the OECD measures MPS irrespective of the existence of an administrative price, while the existence of an administrative price is a requirement for a commodity to be included in a member's MPS. The distinction between MPS and Non-ex DP conveniently reflects the origin of the support: MPS measures the implicit production related transfer from consumers to producers of having higher domestic prices compared to the world market, while Non-ex DP are production-related direct payments provided by taxpayers.

Policy instruments covered by the blue box are, in principle, distorting, but subject to a production-limiting program so to reduce or even offset the distortionary effect of the measure. According to article 6.5 of the Uruguay agreement on agriculture, blue box payments are exempt from reduction commitments if, in addition to be part of a production-limiting program, one of the three criteria listed in table 2 is satisfied.

Green box policies are assumed not (or only minimally) to distort production and are consequently exempt from reduction commitments. In addition to policy-specific criteria, they must meet the following two basic criteria for green box policies, listed in Annex 2 of the Agreement on Agriculture (WTO 1994): (1) Support is provided by a publicly-funded government program, and (2) it does not have the effect of providing price support to producers (Melendez-Ortiz *et al* 2009). Annex 2 of the Agreement on Agriculture covers various support measures such as general services, public stockholding, domestic food aid and direct payments listed in the green box. Table 2 lists the most important specific criteria regarding support measure eligibility and amount of payment. Annex 2 of the Agreement on Agriculture covers seven rather diverse types of payments ranging from decoupled income support, structural adjustment aid and environmental programs to regional assistance grants. Expenditure that does not fit to one of these groups has to meet the criteria for decoupled income support in order to qualify as a green box measure. Program eligibility is conditioned on the specific objective of the measure so to

⁹ A *de minimis* exemption of five percent of the value of production (for both product-specific measures and non-product-specific measures) reduces the "Current Total AMS" that is compared to the member's obligations (Brink 2011). For the sake of comparison with the OECD data we add back these *de minimis* amounts.

¹⁰ In the EU notifications a category is defined for market price support (and non-exempt payments) for those commodities (mostly fruits and vegetables) that cannot be easily calculated from administered prices. This Equivalent Measurement of Support is included as MPS and non exempt payments as appropriate in our tables. The most recent EU notification has removed this element of the AMS calculation.

ensure that the policy is targeted towards its objective. In the case of decoupled income support, resource retirement and regional assistance, the policy-specific criteria state explicitly that the amount of the payment should not be related to or based on type or volume of production, prices or factors of production. For most other programs like crop insurance, relief from natural disasters, environmental programs and also for regional assistance, the amount is solely linked to income loss (or extra cost of program compliance). No explicit statement of eligibility is given in the case of producer retirement programs.

Table 3 shows the number of policy instruments for Norway, Switzerland, the EU and the US that are contained in the datasets for each category. We have counted only those measures for which there was a non-zero amount for at least one year within the stated period.¹¹

¹¹ There are a few instances of payments with a negative value (e.g., production fees) in both databases.

Table3. Definition of support categories and number of reported policy instruments for Norway, Switzerland, the EU and the US between 1995 and 2009 (2007 for the EU)

Measure		Norway	Switzer-land	EU	US
OECD PSE & GSSE		93	101	442	294
OECD PSE		73	57	349	245
A1	Market price support	10	12	18	14
A2	Output payments	27	2	66	143
B1	Variable input use	6	7	41	5
B2	Fixed capital formation	7	2	32	16
B3	On-farm services	1	3	30	19
C	Current A/An/R/I ¹⁾ , production required	18	25	155	43
D	Non-current A/An/R/I ¹⁾ , production required	2	3	2	-
E	Non-current A/An/R/I ¹⁾ , production not required	-	1	1	6
F	Non-commodity criteria (long-term resource retirement (F1), a specific non-commodity output (F2), other non-commodity criteria (F3))	2	1	3	8
G	Miscellaneous payments	-	1	1	-
OECD GSSE		20	44	93	49
H	Research and development	6	7	8	12
I	Agricultural schools	-	4	7	1
J	Inspection services	3	6	5	3
K	Infrastructure	4	5	10	14
L	Marketing and promotion	2	11	44	16
M	Public stockholding	1	7	14	1
N	Miscellaneous payments	4	4	5	2
WTO-notification		84	98	143	343
MPS		14	23	45	7
Non-exempt direct payments		24	20	52	226
Blue box		5	-	28	7
Green box		41	55	18	103

¹⁾ Area, number of animals, farm receipts or farm income

Source: OECD (2011), WTO (div.)

The PSE database lists a total of around 100 measures for Norway and Switzerland each, and more than 400 measures for the EU. The US lies in the middle with around 300 programs. Most of the measures belong to the PSE, while roughly one quarter of the measures are listed under the GSSE. Within the PSE, only a few measures do not require production. Norway and Switzerland have only two such measures each, while the EU has four of its measures in these categories. The US has as many as 14 programs in this category, but it has also the highest number of output-related payments. However, as will be shown below, the pure count of measures does not provide a reasonable measure of the extent to which agricultural support is related to production as the monetary amount behind the measures listed varies significantly. Most importantly, the level of program detail differs quite a lot across countries. For

example, the PSE database contains no less than 34 US commodity loan interest programs, as there is a line for each commodity.

The WTO-notifications contain about the same total number of policy measures as does the OECD database for Norway and Switzerland, but less than half of the total number of PSE and GSSE measures for the EU.¹² This is due to both reporting practice and concept design. The PSE-database is more disaggregated and requires the listing of single instruments. The WTO-notification scheme allows for providing totals for sub-groups of instruments, especially in the green box which only distinguishes between the twelve sub-groups. The EU reports on the level of sub-groups, while Norway and Switzerland report more or less single measures. The coincidence of having approximately the same number of measures in the PSE-database and the WTO-notifications for Norway and Switzerland does not mean that the databases contain the same instruments and that they can be easily matched, as will be explained below. For the case of the EU, this task is even more challenging as the WTO-notifications provide only limited information about which single instruments are aggregated within the sub-group totals.

Single policy instruments were matched by comparing the instruments' names and their annual values. In some cases, both the names and the values are more or less identical and hence easy to match (one-to-one correspondence). Policy instruments have also been matched in cases where either the names are identical, while the numbers differ or *vice versa*. When policy instruments were listed *en bloc* (as in the WTO green box notifications for the EU), policy instruments in the WTO-database were allocated to the corresponding single policy instruments in the PSE-database (one-to-many correspondence). In the absence of further information, the decision whether or not to match instruments required a subjective decision.¹³ Policy instruments not matched were put in a separate group "Not covered". The total monetary value of this group consists of those instruments and the (positive or negative) difference of matched instruments where their monetary values did not coincide.

Broadly speaking, a country's most important policy instruments in terms of monetary value and political significance could be more or less easily identified and matched. Problems arose frequently with respect to temporary measures, measures with small monetary amounts and measures contained in the GSSE (although the GSSE-categories have counterparts in the 'General services' sub-group of the WTO green box). This is especially true for the EU for which hundreds of single measures needed to be matched with only a few categories in the WTO-notifications with little additional information. Therefore, we regard our results for the EU as somewhat preliminary. We expect, however, our results to be quite robust even if a revision of the matching process should require some changes.

¹² In the case of the US the WTO notifications identify more categories in the PSE database.

¹³ A complete list of the mapping of policy measures can be found in the annex.

3. Results

3.1 Norway

The Norwegian notifications to the WTO Committee on Agriculture follow the adopted rules by providing the required support tables. The latest available notification to the WTO Committee on Subsidies and Countervailing Measures covers subsidies for the years 2008 and 2009 (WTO 2011a) and follows that Committee's rules for all subsidies except those to agriculture. Instead of including the detail of such subsidies a reference is made to the notifications to the Committee on Agriculture. The SCM notifications however do give a short presentation of the major support measures to agriculture covering both market regulation and direct payments and including figures for commodity trade balances.

Figure 1 provides an overview of the PSE-data and the WTO-notifications for Norway for the period 1995 to 2009. In general, there are small net differences in the total support measured by the OECD and notified to the WTO across years. There are, however, some major differences in single years, such as 2001 and 2009.

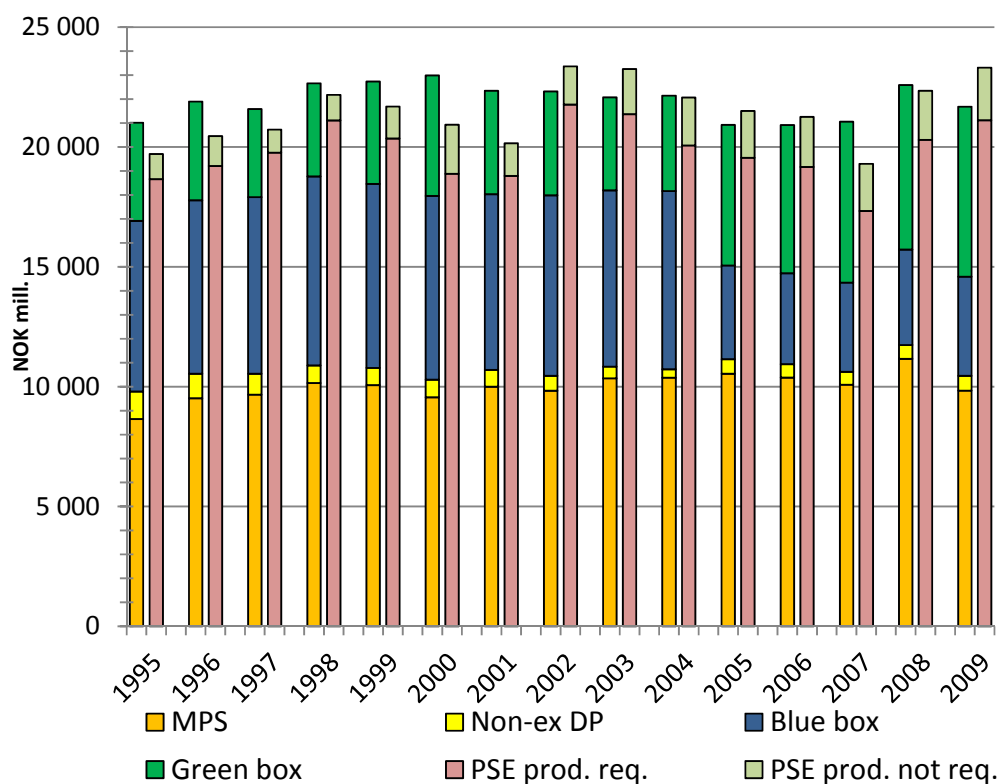


Figure 1. Overview of PSEs and WTO-notification for Norway for 1995–2009 (NOK mill.)

Total support to agriculture in Norway as notified to the WTO consists of about one half production and/or trade distorting support (MPS and Non-ex DP)¹⁴. The other half is made up of blue box support

¹⁴ For more detail on Norway's notifications to the WTO Agriculture Committee see Gaasland *et al* 2011.

and green box support. A shift can be observed in 2005. Until 2004, blue box support dominates, while from 2005 onwards, green box support takes the lion's share. This shift is not however reflected in the PSE database as grouped according to the measures' production requirement. Almost all of the support provided to the agricultural sector is implemented in a way that requires production. According to the OECD, only a tiny fraction of support does not require production, and it is apparently much smaller than that which is notified as green box support to the WTO.

Figure 2 shows the development in Norway of blue box support and green box support by PSE categories from 1995 to 2009. Despite some changes, total unconstrained support (i.e., sum of blue box and green box) stays relatively constant in nominal terms within the entire period. There is a drop in support associated with a major change in the composition of policy instruments from 2004 to 2005, but total support rises again to reach post-2004 levels. The period between 1995 and 2002 was one of political stability in Norway. A policy change induced by the presentation of a White Paper on agricultural policy in 1999 and a change in government in 2001 made some blue box support shift from category C to category D. Two years later, this support seemingly shifted from the blue box to the green box. About half of the amount, however, stayed in category C, while the other half was accounted for in category D. As mentioned above, categories C and D differ with respect to whether payments are based on current (C) or non-current (D) area/animals/receipts/income, but they both require production in order for farmers to be eligible to receive payments. In this respect, shifting that support from the blue box to the green box does not seem to have taken away the link to production of that support.

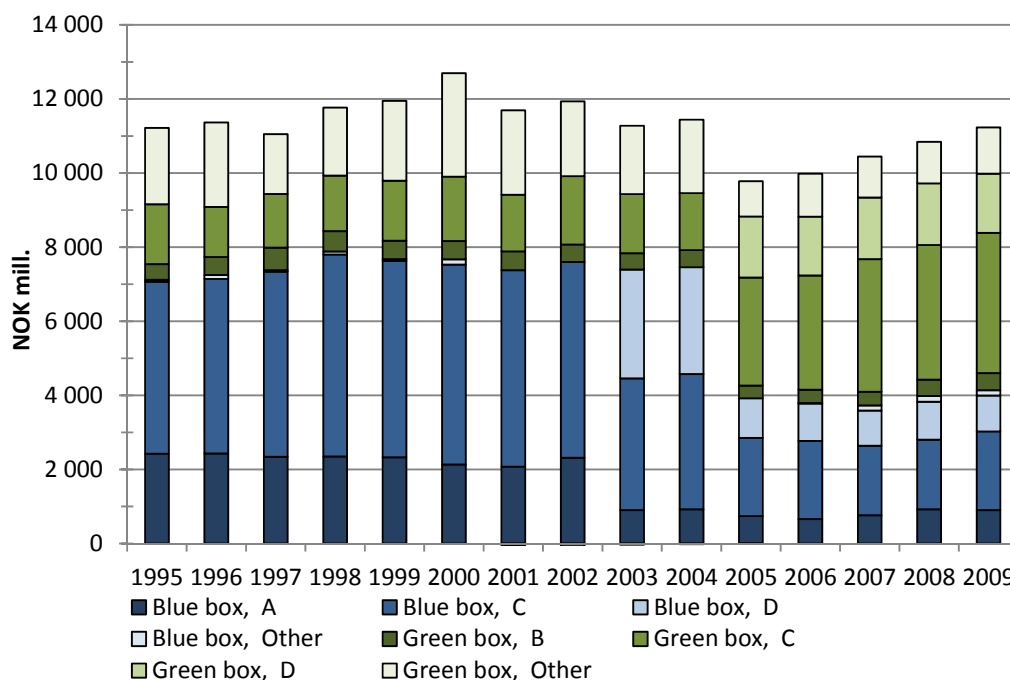


Figure 2. Development of blue box support and green box support by PSE categories for Norway for 1995–2009 (NOK mill.)

Figure 3 shows a detailed decomposition of notified domestic support for Norway by PSE/GSSE-categories for the most recent year 2009. It reveals the strong link between the WTO's MPS and the PSE category A1 as both aim to measure market price support, as reported in Gaasland *et al.* (2011). The difference in values, as shown by the orange bar in the rubric 'Not covered' stems from accounting differences as the PSE used observed domestic and world market prices at the farm gate, while the WTO takes administrative prices (in Norway at the level of dairies and slaughterhouses) against a fixed reference price. The negative value indicates that the actual MPS as measured by the OECD exceeds MPS notified to the WTO. In addition to the accounting differences mentioned above, Norway has abolished administrative prices for beef and poultry (and hence does not any longer notify MPS for those products), while it is still contained in the PSEs since the domestic price is higher than the world market price.

There is also a clear correspondence between output payments contained in PSE category A2 and the WTO's Non-ex DP. Blue box payments are spread between PSE categories A2, C and D. All of these categories consist of measures that require production. Green box payments are even more spread out over PSE categories. There is a small amount of green box payments considered by the OECD as output payments (category A2). The majority of green box payments, however, can be found in categories C and D, which are direct payments based on current (C) and non-current (D) areas/animals/receipts/income for which production is required. So far, Norway has only two small measures in the PSE which do not require production (F). GSSE support is contained in the green box or not covered. There is a fair amount of support in categories B1, C and H that is not covered by the WTO-notifications. This concerns fuel tax concessions in category B1, income tax deduction listed in category C, and export subsidies as well as raw material price compensation payments in category N.

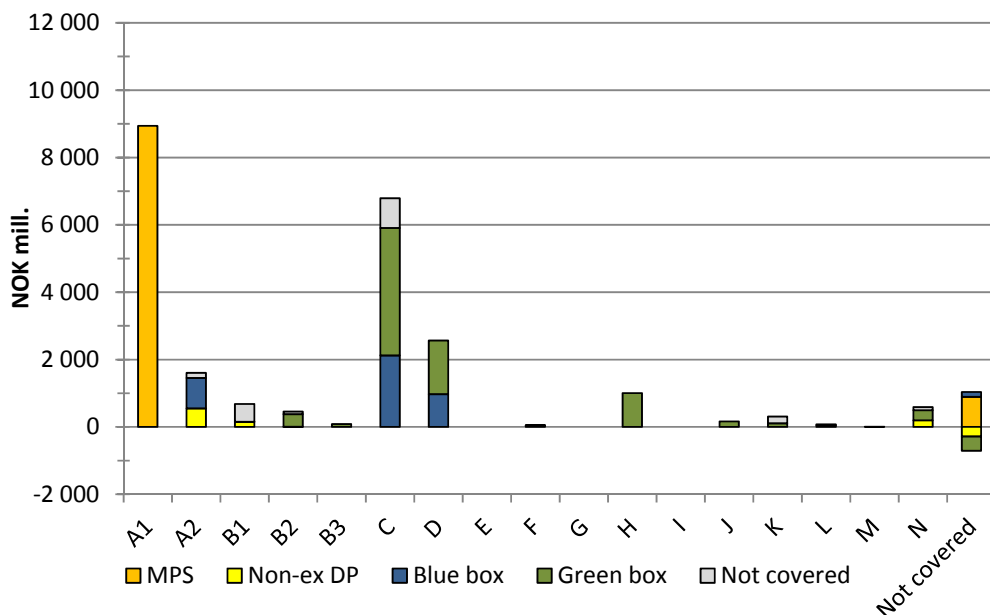


Figure 3. Decomposition of WTO-notifications by PSE-categories for Norway for 2009 (NOK mill.)

Table 4 lists the support measures in 2009 that Norway has notified in the green box, but which the OECD considers payments that require production. Around 80 per cent of Norway's green box measures are regarded as requiring production by the OECD. In particular, more than half of the green box payments fall into the sub-group 'environmental programs'. The bulk of these payments are for environmental programs and considered as payments based on current or non-current area, animal numbers, farm receipts or farm income. Another important measure is to be found in the sub-group 'other' for which the criteria for decoupled income support apply.

The National Environmental Program (NEP) is the most important single support measure within the sub-group 'environmental programs'. It was notified the first time in 2005 as a result of removing the former Acreage and Cultural Landscape Scheme (ACLS) from the blue box (see fig. 2). We have been unable to locate Norway's notification of the National Environmental Program as a new measure on the WTO's website. The Norwegian government introduced the NEP as a payment for environmental amenities and as a compensation for differences in the regional costs of production, claiming it would qualify as a green box direct payment (AAD 2004). Both arguments are not in line with the policy-specific criteria for environmental programs. Differences in the regional costs of production exist independent from program participation. Furthermore, the amount has to be based on the extra costs or loss of income involved in complying with the program, and not on society's marginal willingness to pay for the environmental quality. Since the amount of the payments is predetermined in negotiations between the government and the farmers' organizations, it is very unlikely the extra costs of program participation coincide with society's willingness to pay. The OECD has recognized the introduction of the NPE by moving about two thirds of the ACLS from category C to category D, and keeping one third in category C.

Table 4. WTO green box support measures considered requiring production by the OECD for Norway in 2009 (NOK mill.)

	B1	B2	C	D	Sum B1-D	Green box
General services	-	-	-	-	-	876
Public stockholding	7	-	-	-	7	7
Domestic food aid	-	-	-	-	-	-
Decoupled income support	-	-	-	-	-	-
Income insurance and safety-net	-	-	-	-	-	-
Relief from natural disasters	-	-	36	-	36	30
Structural adjustment - Producer retirement	-	-	-	-	-	-
Structural adjustment - Resource retirement	-	-	-	-	-	106
Structural adjustment - Investment aid	-	370	-	-	370	625
Environmental programs	-	-	2 488	1 596	4 084	4 186
Regional assistance	-	-	-	-	-	-
Other	-	-	1 261	-	1 261	1 261
Total	7	370	3 785	1 596	5 758	7 092

Source: Own calculations based on OECD (2011) and WTO (div)

The Vacation and Replacement Scheme (VRS) has been in operation long before 1995. It is a payment to compensate farmers for expenses related to hiring replacement labor during vacations of the farm family. Total compensation is subject to a farm-specific upper limit defined by the number of livestock.

Since the program is notified in the sub-group ‘other direct payments’, the criteria for decoupled income support apply. These prescribe that the amount of the payment must not be related to production, prices or factor of production. Here, the payment’s upper limit is related to current factors of production, though not the payment itself. Furthermore, no production is required to receive such payments. This is in principle true for the VRS as the requirement concerns documented expenses of hired labor rather than evidence of production.

Table 5 shows the decomposition of WTO blue box payments by the PSE classification system.

Table 5. WTO blue box support measures for Norway in 2009 (NOK mill.)

	A2	C	D	Sum A2-D	Blue box
Based on fixed area and yield	-	-	-	-	-
Made on 85 per cent or less of base level of production	900	-	972	1 872	2 018
Livestock payments made on a fixed number of head	-	2 123	-	2 123	2 120
Total	900	2 123	972	3 995	4 138

Source: Own calculations based on OECD (2011) and WTO (div)

It turns out that Norway notified measures in the WTO blue box in 2009 that were considered by the OECD as payments within PSE-categories A2, C and D. On first sight, it seems contradictory that output payments can be notified as payments under a production-limiting program. Norway has two such payments: Regional deficiency payments on milk worth about NOK 400 mill. and regional deficiency payments on meat from livestock, sheep, goat, pork and poultry worth about NOK 500 mill. In total, the programs comply with the 85 per cent-rule as a zero payment rate applies in central regions covering more than 15 per cent of total production, although the program on meat covers more than 85 per cent of all sheep and goat. Due to the existence of a milk quota scheme, the regional milk payments can be said to be made under a production-limiting program. Still, the payment contributes to maintaining production. The similar cannot be said in case of the meat payments as no meat production quota scheme exists. Although the meat payments are restricted to a total production of 186 mill. kg, this limit does not appear to be binding¹⁵. Hence, the meat payment seems to violate the blue box conditions. If it were regarded as non-exempt direct payments, Norway would have breached its current total AMS commitment in 2005.

The production subsidy for livestock (PSE-terminology) or headage support for animals (WTO-terminology) is notified as a payment under a production-limiting program based on a fixed number of head. To the best of our knowledge, these conditions can hardly be said to be satisfied. The support measure is categorized as a payment based on the current number of animals (PSE-category C). Payments are made for a wide range of animals such as dairy cows, suckler cows, goats and sheep, sows, slaughter pigs, laying hens and other poultry. Besides of the milk quota scheme, no other production-

¹⁵ No official data exist on the amount of meat eligible for the regional deficiency payments. Based on the observed regional distribution of the animals and assuming no yield variation across payment zones, our calculations indicate a filling rate of about 75 per cent, meaning that about 140 mill. kg meat are eligible for the payments.

limiting program is in place in Norway.¹⁶ One argument for having the payments notified in the blue box would be that they are limited to a certain number of animals per farm. For example, payments are given for the first 50 dairy cows only. With an average of about 20 dairy cows per farm, this restriction does not seem to pose a major limit for most farms.¹⁷ Furthermore, even if the payments are made for a limited (not fixed) number of animals per farm, the total number of animals receiving those payments is not fixed. For instance, the total number of suckler cows receiving such payments almost doubled between 1999 and 2011, while the total number of chicken even more than doubled during the same period (NAA 2011). For other types of animals, like dairy cows, the numbers have decreased. Additional support for our argument is that the legal provision of the regulation for the direct payments does not mention any limits regarding the eligibility of animals to receive payments other than the per farm limits (MAF 2002). The official purpose of the payments is to contribute to an active and sustainable agriculture within the objectives Parliament has drawn up (MAF 2002). This very broad and loosely stated purpose hints on official agricultural policy objectives that aim at maintaining, and even increase, agricultural production rather than limiting it. If the headage support for animals were regarded as non-exempt direct payments, Norway would have breached its current total AMS commitment in every year since 1995.

The last measure notified in the blue box is the structural income support worth about NOK 1,000 mill. It is notified under the 85 per cent rule and categorized as being based on non-current numbers of animals, and requiring production (PSE-category D). Payments are made for the first five dairy cows on a farm. As less than 1 per cent of all farms with dairy cows are below that cap (Statistics Norway 2011), the payment can, for all practical purposes, be regarded a lump-sum payment for dairy farms. For that reason it is placed in PSE-category D – although the legal basis for the payment is the current number of dairy cows. As the payment applies for dairy cows, it can be argued that it is subject to a production-limiting program (i.e., the milk quota system).

Given the about 11,400 farms with dairy cows and the total number of dairy cows (245,000), the number of dairy cows receiving the payment clearly satisfies the 85 per cent rule as only $(11,400 \times 5 / 245,000 =)$ 23 per cent of all dairy cows received the payment in 2010.

In 2002, the payment was extended to suckler cows with a payment rate per animal for all animals between 6 and 49 suckler cows. As about 80 per cent of farms with suckler cows have less than 20 suckler cows, it is reasonable to believe that this payment cannot be regarded a lump-sum payment for

¹⁶ There exist legal provisions that restrict the number of pigs, hens and other poultry to be held on a single farm. Although they may be regarded as limiting production onsite, they do not limit total national production.

¹⁷ Unfortunately, no official statistics are available to calculate the number of dairy cows held on farms with more than 50 dairy cows. More than 60 per cent of all dairy cows are held on farms with less than 30 dairy cows, and the average number of dairy cows on farms with more than 30 dairy cows was 45 dairy cows in 2010 (Statistics Norway 2011).

farms with suckler cows.¹⁸ Instead, the payment would be considered based on current animal numbers requiring production (PSE-category C). Moreover, it is questionable whether the payment for suckler cows satisfies the 85 per cent rule. Only 4 per cent of all suckler cows are held on farms with less than 5 suckler cows and are hence not eligible for the payments. But the average number of suckler cows for farms with more than 20 suckler cows is about 30 cows. It is therefore reasonable to believe that a large share of those farms keep less than 49 cows, making it difficult to comply with the 85 per cent rule. In addition, since suckler cows are outside the milk quota system, the payments can hardly be said to apply under a production-limiting program.

3.2 Switzerland

The Swiss notifications to the WTO Committee on Agriculture and to the WTO Committee on Subsidies and Countervailing Measures also follow closely the respective rules by providing the required information. The latest available notification to the Committee on Subsidies and Countervailing Measures covers subsidies for the years 2009 and 2010 (WTO 2011b). The notifications are, however, limited to commodity-specific measures such as market intervention, export refunds and non-exempt product-specific direct payments. The notifications to the Committee on Subsidies and Countervailing Measures thus seems to cover only the AMS part of domestic support leaving out all exempt direct payments (WTO green box) notified to the Committee on Agriculture.

There is somewhat more discrepancy between the WTO-notifications and the PSE for Switzerland when compared to Norway (see Figure 4). This may be caused by the fact that MPS is more dominant in Switzerland and smaller differences between the WTO external reference price and the PSE observed reference price may cause larger overall differences. The picture is somewhat different from that of Norway in another respect: MPS as measured in the WTO notifications has been continuously reduced as a result of an increase in direct payments. Switzerland does not use the blue box, but it has nearly all of its direct payments notified in the green box. Much of this support is considered related to production in the PSEs, although the share of support that does not require production has considerably increased in both relative and absolute terms between 1995 and 2009. This overview reveals significant reform towards the decoupling of agricultural support that has taken place in Switzerland over the last two decades. But despite these achievements, there is still a significant amount of green box support that is linked to production.

¹⁸ Similarly to dairy cows, no official statistics are available to calculate the number of suckler cows held on farms with more than 50 suckler cows (Statistics Norway 2011).

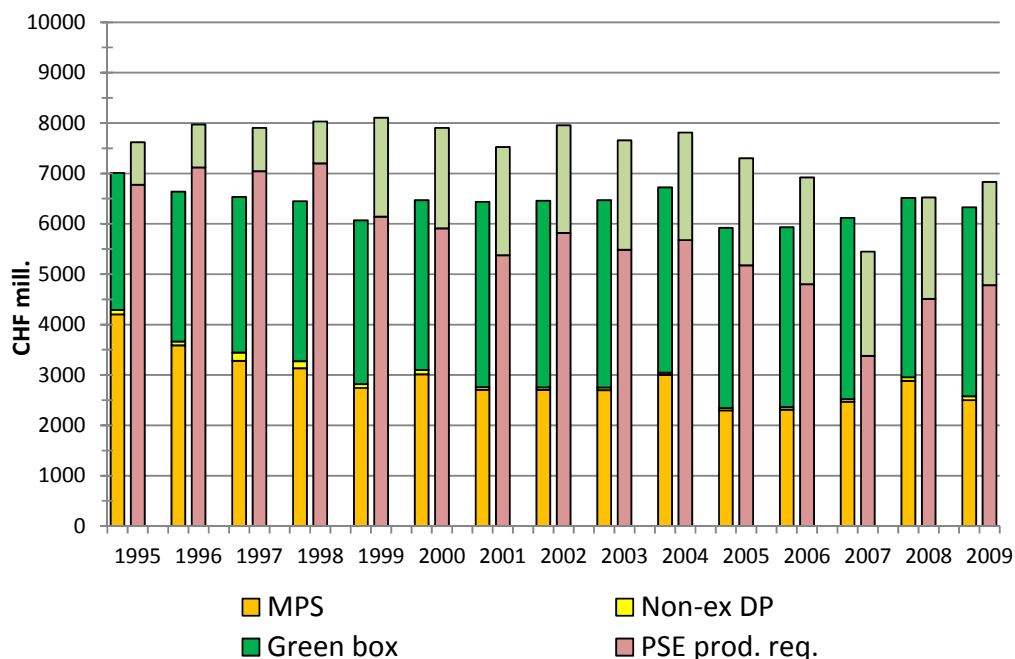


Figure 4. Overview of PSEs and WTO-notification for Switzerland for 1995–2009 (CHF mill.)

Figure 5 illustrates the development of green box support by PSE categories for Switzerland between 1995 and 2009. The figure shows the introduction of non-production related support in category F in 1999 at the expense of a reduction of support in category C and other categories than those listed explicitly in the figure. The figure also reveals that the green box contains some payments that are regarded as output payments by the OECD. Their value has significantly increased between 1998 and 2001, and has remained more or less stable since. These payments include direct price support to milk processed into cheese which is notified under the sub-group ‘regional assistance programs’ in the green box. To the best of our knowledge, this payment is not regionalized. It is paid to the processors of designated types of cheese that are then encouraged to pay a correspondingly higher milk price to farmers who deliver milk to them. The payment makes up about one quarter of the milk price.

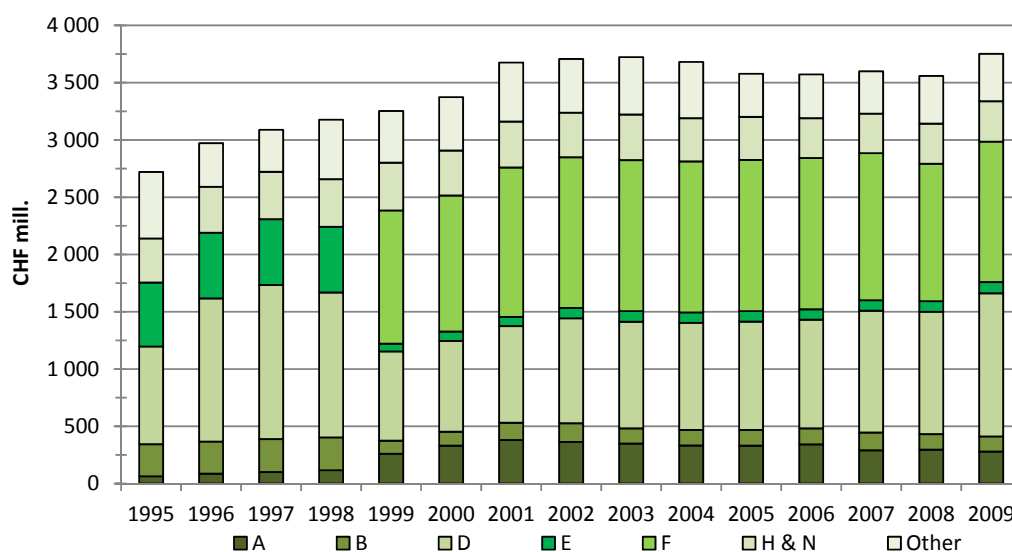


Figure 5. Development of green box support by PSE categories for Switzerland for 1995–2009 (CHF mill.)

The decomposition of WTO-notifications by PSE-categories for Switzerland in 2009 is shown in figure 6. As for Norway, there is a clear link between MPS and category A1. It can also be inferred from the negative value in the category 'Not covered', that market price support as notified to the WTO is lower than actual market price support as measured by the OECD. Most of green box payments are considered as category C and category E payments in the PSE database. There is little support to general services in Switzerland (categories H to N).

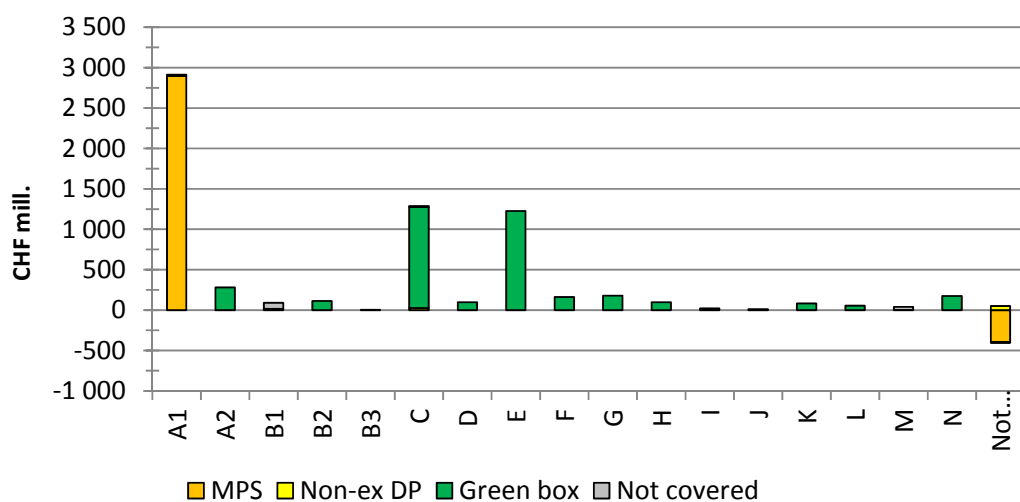


Figure 6. Decomposition of WTO-notifications by PSE-categories for Switzerland for 2009 (CHF mill.)

As in the case of Norway, most of Switzerland's direct payments that require production according to the OECD are notified as environmental programs or regional assistance programs. About half of the country's green box support notified for 2009 is regarded as requiring production (see table 6).

Table 6. WTO Green box support measures considered requiring production by the OECD for Switzerland in 2009 (CHF mill.)

	A2	B1	B2	B3	C	D	Sum B1-D	Green box
General services	-	-	-	4	-	-	4	629.1
Public stockholding	-	-	-	-	-	-	-	1.4
Domestic food aid	-	-	-	-	-	-	-	0
Decoupled income support	-	-	-	-	509	-	509	1735.1
Income insurance & safety-net	-	-	-	-	-	-	-	0
Relief from natural disasters	-	-	-	-	-	-	-	0
Struct. adj. – Prod. retirement	-	-	-	-	-	-	-	0
Struct. adj. – Resource retirem.	-	-	-	-	-	-	-	0
Struct. adj. - Investment aid	-	-	113	-	-	-	113	84.1
Environmental programs	-	15	-	-	298	98	411	566.1
Regional assistance	280	-	-	-	442	-	722	734.8
Other	-	-	-	-	-	-	-	0
Total	280	15	113	4	1 250	98	1 759	3 751

Source: Own calculations based on OECD (2011) and WTO (div)

There are basically four important groups of measures in the Swiss PSE calculations: (1) Decoupled income support in category C worth CHF 509 mill., (2) regional assistance in category C worth CHF 443 mill., (3) regional assistance in category A2 worth CHF 280 mill., and (4) environmental programs in category C worth CHF 296 mill.

The Payment for the Holding of Roughage Eating Farm Animals (PHREFA) is the single production-requiring green box measure with the highest monetary amount (CHF 509 mill.). It accounts for one third of Swiss' total decoupled income support. PHREFA was introduced in 1999, and constitutes a payment per animal with the rate of the payment differentiated between species. Neither the OECD cookbook for Switzerland nor the Swiss legislation (Swiss federal council 2011) indicate that eligibility is linked to a defined and fixed base period as required by the respective policy-specific criteria for decoupled income support. Rather, the OECD has put PHREFA in category C which covers payments made on current animal numbers for which production is required. In the notification of PHREFA in 1999, Switzerland gives no specific reason or explanation for why it regards the measure to comply with the criteria for decoupled income support. It only notes that *"the payment of the contributions is subject to the environmental benefits required (a condition that is valid for all direct payments). Moreover, the farmer must satisfy structural and social criteria"* (WTO 1999a: 3).

There exist two support measures classified in category C and notified under regional assistance, the Payments for the Holding of Livestock in Difficult Conditions (PHLDC) worth CHF 353 mill. and the Payments for Farming on Steep Slopes (PFSS) worth CHF 90 mill. According to the OECD cookbook, the former is calculated per head of animal located in farms in mountainous areas with up to 15 livestock units. The rate of payment increases with the altitude of the farm. Although the measure has a clear geographical reference, and the payment rate is degressive (as required in order to comply with the policy-specific criteria for regional assistance programs), there is no evidence that the payment rate is limited to the extra costs or loss of income caused by the disadvantage. The PFSS is a program to

maintain agricultural area on steep slopes defined by a gradient of more than 18 per cent. However, it is not stated how the payment rate is calculated and whether it solely compensates for increased costs.

Two payments, worth CHF 280 mill. in total, are regarded as output payments (category A2). The Milk Price Supplement for Cheese Production (MPSCP) covers CHF 250 mill., while the remaining CHF 30 mill. are associated with the Payments for Non-Silage Feeding of Cows (PNSFC). According to the OECD's cookbook for Switzerland, the MPSCP is a payment per ton of milk granted to farmers delivering milk to cheese producers, while the PNSFC is a payment per ton of milk to producers who do not use silage fodder and produce certain types of cheese like Emmental, Gruyère, Sbrinz, Appenzel and Tilsit. As both measures are notified as regional assistance programs, they seemingly contradict the requirement of the amount of payment being not related to the volume of production. In addition, although the types of cheese may be produced in distinct geographical areas, it is not at all clear that these areas suffer from permanent disadvantages. In 2001, the US posed questions regarding the MPSCP during the review process in the committee on subsidies and countervailing measures (WTO 2001). Although Switzerland stated in its response that the measure would be abolished by April 2002, the PSE-data lists budgetary outlays for this measure continuously since 1996. Furthermore, Switzerland argued in its response that the measure was necessary, because *"in the absence of such aid, producers would sell their milk to manufacturers which do not produce cheese"* (WTO 2001: 7). Switzerland does not appear to justify the measure as offsetting a permanent regional disadvantage for its dairy producers. It takes the profitability of milk production as given and asserts a production cost disadvantage for cheese processors relative to other milk processors. The PNSFC is a measure related to a specific production technology, i.e. not using silage fodder. Hence, it relates to a cost disadvantage, rather than to a regional disadvantage.

A couple of smaller environmental programs make up the last group worth CHF 296 mill. This group consists of payments for certain animal housing systems, payments for keeping animals outdoors on a regularly basis, payments for organic farming, and payments for extensive farming. Notified as environmental programs, the critical aspect is whether the payment rate can be considered to solely compensate additional costs of production or loss of income from participating in the various programs. Neither the Swiss notifications nor the OECD cookbook provide sufficient information to assess this issue.

3.3 EU

The EU notifications to the WTO Committee on Agriculture and to the WTO Committee on Subsidies and Countervailing Measures also follow the respective rules by providing the required information. The latest available notification to the Committee on Subsidies and Countervailing Measures for subsidies for 2007 and 2008, contains a comprehensive description of the policy instruments covered by the EU's Common Agricultural Policy (CAP) (WTO 2009a). The description follows the usual division of policy instruments by the EU: Export refunds, market intervention and direct aid financed through the European Agricultural Guarantee Fund (EAGF) ('First pillar of the CAP'), and direct aid as well as rural development measures financed by the European Agricultural Fund for Rural Development (EAFRD) ('Second pillar of the CAP'). The rural development payments are classified under four different axes: improving competitiveness for farming and forestry, environment and countryside, improving quality of life in rural areas and diversification of the rural economy and the leader axis that aims to co-integrate the different axes.

The SCM notification does not make an explicit reference to the notifications to the Committee on Agriculture, but states that regarding the first pillar of the CAP “in 2008, 74 per cent of the support provided did have no or at most minimally trade distorting effects” (WTO 2009a). Concerning the second pillar of the CAP, the notification simply reads that there are “no, or at most minimal, trade distorting effects” (WTO 2009a). This claim is following by a comprehensive list of support measures covered by the second pillar of the CAP, pointing out that payment rates cover extra costs or loss of income of program participation. In some instances, such as for agri-environmental payments and animal welfare payments, the notification states that “where necessary, [the payment rates] may cover also transaction cost” (WTO 2009a) indicating that the rate is set somewhat higher than cost compensation would require. However, the notification does not specify what “transactions” the transaction costs cover and what they amount to. The mention of transaction costs is not mirrored in the notifications of new support measures introduced as part of the CAP’s Agenda 2000 (WTO 1999b) or the 2003 Midterm Review (WTO 2009b).

Among the three European countries (or groups of countries) considered, the EU appears to have undertaken the most significant steps of agricultural reform. This is especially visible when looking at the WTO-notifications where MPS was more than halved during the reporting period, and was only partly compensated by direct payments, mostly in the form of green box support (Josling and Swinbank. 2011). On the other hand, figure 7 reveals that this development is supported to a much lesser extent by the PSE-figures. Here, total PSE (including GSSE) stays fairly constant in nominal prices throughout the period. However, from being almost negligible in 1995, support that does not require production accounted for around 40 per cent of the PSE in 2007. This mirrors the shift towards the decoupling of direct payments that also could be inferred from the WTO notifications, but to a much smaller extent. It is apparent from the comparison that the EU’s green box must be composed of payments that require production, as the level of the green box is significantly higher than the level of support that is regarded by the OECD as not requiring production.

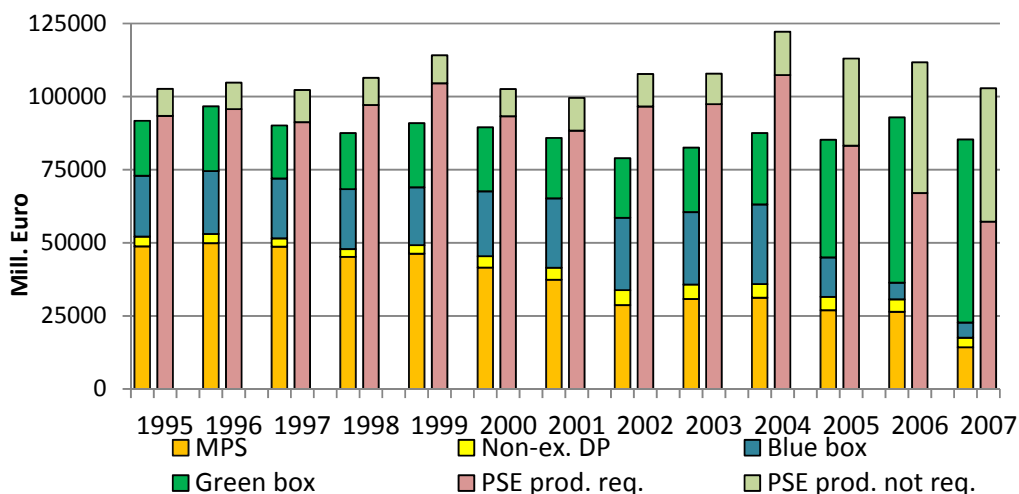


Figure 7. Overview of PSEs and WTO-notification for the EU for 1995–2007 (mill. Euro)

The development of blue box support and green box support in the EU between 1995 and 2007 (figure 8) illustrates the major reform step that took place in the CAP with the introduction of the decoupled Single

Farm Payment Scheme (SPS) as part of the Mid-term review in 2003. Not only did that policy instrument change shift support from the blue box to the green box (as in the case of Norway), but it also shifted it from category C (requiring production) to category E (not requiring production) (as was not the case in Norway).¹⁹ As a result, the EU has almost abolished its blue box support.

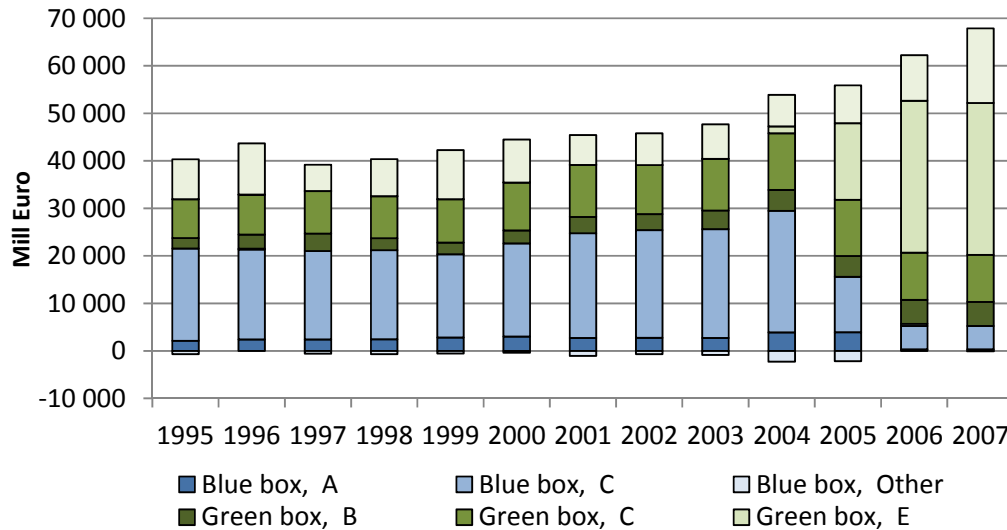


Figure 8. Development of blue box support and green box support by PSE categories for the EU for 1995–2007 (mill. Euro)

Until 2005, the EU notified a couple of output payments in the blue box, such as payments to olive oil and bananas, as well as the dairy premiums. Those have been discontinued as from 2006. The green box contains a couple of production-related input payments (category B), such as various forms for investment aid and pest and disease control. In 2007, the SPS made up about one half of the EU’s green box support, while a little less than 30 per cent still requires production.

¹⁹ Some observers have expressed doubts as to whether the SPS qualifies for green box criteria (Swinbank 2009). However, no WTO member country has so far formally challenged the EU’s position on this point.

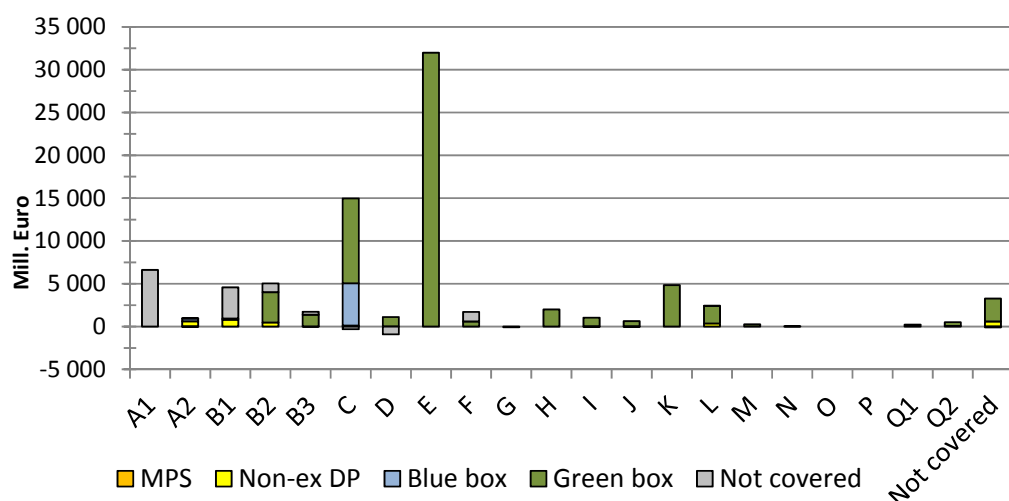


Figure 9. Decomposition of WTO-notifications by PSE-categories for the EU for 2007 (mill. Euro)

About 25 percent of the EU's green box support in 2007 (16 bill Euro) is regarded as requiring production by the OECD (table 7). There are three major groups of payments that cover about 75 percent of this amount: (1) Investment aid in category B2, (2) environmental programs in category C, and (3) regional assistance in category C. Investment aid belongs, as in Norway and Switzerland, to category B2 and consists of a couple of programs to aid farm modernization. The most important instruments within this group include EU-funded and nationally funded support for investments in agricultural holdings and start-ups for young farmers.

Table 7. WTO Green box support measures considered requiring production by the OECD for the EU in 2007 (mill. Euro)

	A2	B1	B2	B3	C	D	Sum A2-D	Green Box
General services	-	3	218	1 304	-	-	1 525	6 781
Public stockholding	1	-	-	-	-	-	1	50
Domestic food aid	-	-	-	-	-	-	-	429
Decoupled income support	-	-6	-	-	283	-	277	34 528
Income insurance & safety net	-	-	-	-	-	-	-	14
Natural disasters	-	3	11	-	1 353	-	1 367	968
Str. adj. - Producer retirement	-	-	-	-	-	1 123	1 123	944
Str. adj. - Resource retirement	-	-	-	-	-	-	-	452
Investment aid	-	143	3 211	70	226	-	3 651	7 594
Environmental programs	-	-	-	-	4 040	-	4 040	6 345
Regional assistance	2	-	100	-	4 004	-	4 107	4 508
Total	3	143	3 541	1 374	9 906	1 123	16 090	62 610

Source: Own calculations based on OECD (2011) and WTO (div)

As in the case of Norway and Switzerland, environmental programs and regional assistance programs are regarded as category C payments, i.e. based on current area, animal numbers, farm receipts or farm income and requiring production. The EU environmental programs consist of a series of instruments such as agri-environmental support, support for extensive farming and support for organic farming. The OECD

cookbook on EU support measures does not contain sufficient information to decide whether the payment rate solely compensates for the costs of participating in the program as required by the policy-specific criteria for such support. However, the EU notified some of these programs as part of the Agenda 2000 reform noting that regarding to support for areas with environmental restrictions “the compensatory allowances will be limited to the extra costs or income loss” (WTO 1999b). Regional assistance payments consist of support to less-favoured areas (LFA) characterized by distinct geographical areas, payments for arable crops and ruminants mostly in the new Eastern European member countries, and nationally financed support to Finnish agriculture which was part of the Finnish accession treaty in 1995. These payments are considered regional assistance because they cover not the entire geographical area of the EU, although they may apply to entire EU member countries. Similar to the environmental programs, the OECD cookbook does not contain information on whether the payment amount is limited to the extra costs or loss of income involved in complying with the measure. But the EU claims that the LFA-payments are provided “at a level which avoids overcompensation for the handicaps” (WTO 1999b). There are insignificant amounts of output payments among the EU’s green box support measures, and very few measures provided as variable input payments.

3.4 US

The US notifications to the US Committee on Agriculture and to the WTO SCM Committee also follow the respective rules by providing the required information. The latest available notification to the SCM Committee covers fiscal year 2007 and 2008 and contains a fair description of major US agricultural policy instruments (WTO 2010b). The notification lists two export programs (Export Enhancement Program, Dairy Export Incentive Program), and 15 domestic support measures including direct payments, price support for milk and sugar, disaster payments and risk management assistance. Five of the 15 measures are tax-related. Although these programs are clearly targeted towards the agricultural sector, they are not notified to the Committee on Agriculture, but contained instead in the PSE-database for the US.²⁰ The value of the tax programs accounted for a little more than 1 per cent of notified domestic support notified to the Committee on Agriculture. For 2008, domestic support notified to the SCM Committee (excluding tax measures) was 15 per cent of notified domestic support to the Committee on Agriculture. A major reason is that domestic food aid has not been included in the US SCM notifications.

²⁰ According to the PSE-database, the total value of income tax concessions amounted to \$1,372 mill. in 2008, while the notifications to the SCM Committee assess the respective value to about \$1,050 mill. for the 2008 fiscal year. The decision not to include tax-concessions as domestic support in the WTO notifications apparently goes back to the Uruguay Round negotiations on the Agreement on Agriculture.

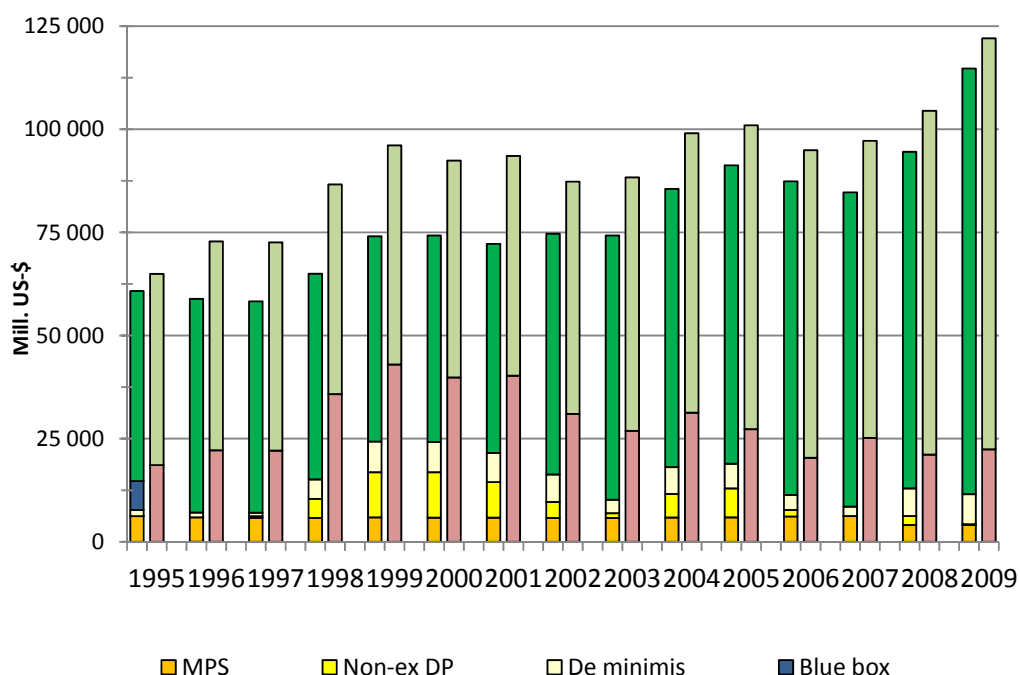


Figure 10. Overview of PSEs and WTO-notification for the US for 1995–2009 (mill. US-\$)

Figure 10 compares domestic support to US agriculture as notified by the WTO and as recorded by the OECD. Both measures note a significant increase in support between 1995 and 2009. While there is a clear similarity in the relative development of support between 1995 and 2009, the absolute numbers differ. A period of relative stability between 1999 and 2003 is followed by peaks in 2004 and 2005, a slight reduction until 2007, and finally a considerably increase in support starting in 2008. WTO green box support and support not requiring production (i.e., the green bars in figure 10) dominate the overall picture. But there is still an indication that the value of production-related support, as reported in the PSE database, exceeds the total amount of market price support, non-exempt direct payments and blue box support. This hints at the fact that some production-related support must be notified within the WTO green box.

The dominance of domestic food aid within the WTO green box is illustrated in figure 11. The various food programs occupy large parts of PSE-category L and CSE-category Q2. Their share of green box support stays above 60 per cent through the entire period with a peak in 1995 of 80 per cent. In 2009, domestic food aid corresponded to 75 per cent of green box support. Apart from domestic food aid, there is notable support in PSE-categories B (input subsidies) regarding as related to production. Unlike Switzerland and the EU, we were not able to identify any output-related payments among the US' green box notifications.

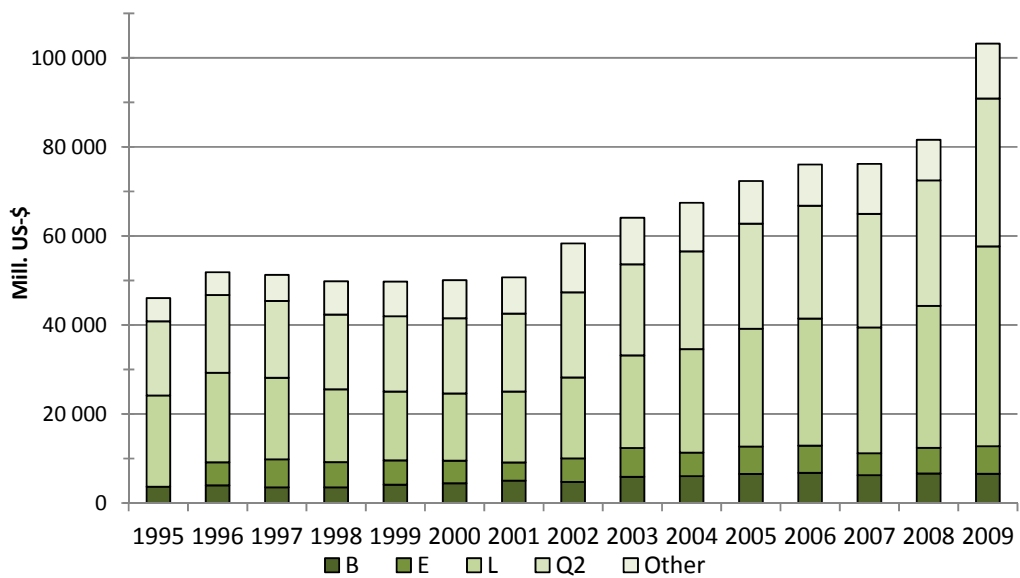


Figure 11. Development of green box support by PSE categories for the US for 1995–2009 (mill. US-\$)

The US appears to offer an example of rather consistent notification to the two institutions (figure 12). Non-exempt direct payments are found in those PSE-categories containing programs that require production, while most green box support is found in PSE-categories covering programs not requiring production. Green box support regarded as provided through programs requiring production is concentrated in PSE-categories B2 and B3. These categories include general services and environmental programs. A share of non-ex DP in PSE-category C is made up by ACRE-payments and disaster payments. As will be shown below, there seems to be some flexibility as to whether disaster payments are notified as green box measures or in the group of non-exempt direct payments.

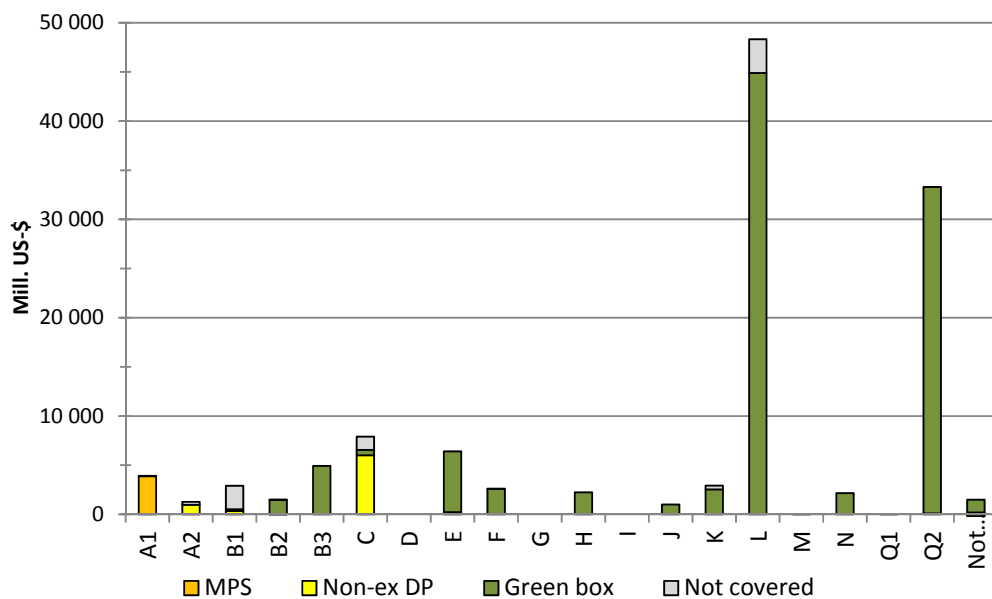


Figure 12. Decomposition of WTO-notifications by PSE-categories for the US for 2009 (mill. US-\$)

Table 8 shows green box support being considered as requiring production by the OECD in 2009. The overall share of such support relative to total green box support is rather small (about 2 per cent) due to the dominance of domestic food aid. The most important programs include general services such as the Animal & Plant Health Inspection Service (\$1,183 mill.), Conservation Technical Assistance (\$738 mill.), and technical assistance at the state level (\$2,151 mill.) as well as environmental programs such as the Environmental Quality Incentive Program (\$982 mill.).

Disaster payments have frequently been notified to the WTO as green box payments and as non-exempt direct payments, while the OECD lists them all together in PSE-category C. In 1999, disaster payments were almost evenly allocated to the green box and to non-ex DP. This picture has changed considerably as most of the disaster payments in 2009 were notified as non-ex DP and only a small amount remained in the green box. It is somewhat unclear whether this is the result of significant changes in the programs, or whether it comes as a result of a change in notification practices. Table 8 also shows some inconsistency regarding disaster payments. The WTO-notification for 2009 consists of only one program (Non-insured crop disaster assistance program by the Farm Service Agency) worth \$95 million. This program is matched with the PSE support measure 'Crop disaster payments (ad hoc)' which has a value of \$550 million.

Table 8. WTO Green box support measures considered requiring production by the OECD for the US in 2009(mill. \$)

	B1	B2	B3	C	Sum B1-C	Green Box
General services	-	-	2 004	-	2 004	13 604
Public stockholding	-	-	-	-	-	-
Domestic food aid	-	-	-	-	-	78 796
Dec. income support	-	-	-	-	-	6 175
Income insurance & safety net	-	-	-	-	-	-
Natural disasters	-	-	-	550	550	98
Struct. adjust. - Producer retirement	-	-	-	-	-	-
Struct. adjust. - Resource retirement	-	-	-	-	-	-
Struct. adjust. - Investment aid	-	-	-	-	-	120
Environmental programs	127	1,277	31	-	1,435	4,419
Regional assistance	-	-	-	-	-	-
Total	127	1,277	31	550	1,985	103,212

Source: Own calculations based on OECD (2011) and WTO (div)

3.5 Overall comparison

This section makes an attempt to summarize the country-specific findings. Table 9 presents a matrix of the decomposition of total agricultural support by PSE-categories (rows)²¹ and the WTO-boxes (columns). The numbers in each cell represent the relative share of total support that belongs to the specific PSE-category and WTO-box. Total support is defined as the unweighted average of the four countries' agricultural support. Included in the table is also a column indicating support by PSE-category for which no correspondence with the WTO-notification system was established. Correspondingly, the table includes a row indicating support by WTO-box for which no correspondence with the PSE-system could be established. In addition, as we based the analysis on the values presented in the PSE-database, this row also captures differences in values for identical policy instruments. The darker the grey shades in the table, the larger the relative share of total support related to the corresponding PSE-category and WTO-box.

The total share of not-covered total support is 10.5, indicating that we, on average for the four countries, were able to identify 90 per cent of total PSE in one of the four WTO-boxes. Almost 70 per cent of total PSE is allocated to the WTO green box, while about 15 per cent are covered by the market price support component of AMS. Non-exempt direct payments and blue box payments play only a minor role. Regarding PSE-categories, about 20 per cent of total support belongs to market price support (PSE-category A1) and direct payments based on non-current factor of production for which no production is required (PSE-category E), while categories C, L and Q1 uptake about 10 per cent of total support each.

Not surprisingly, market price support is the only measure for which there is a one-to-one correspondence between the categories of the OECD system and the categories of the WTO notification

²¹ Note that our definition of PSE comprises all 'traditional' PSE-categories A-G, GSSE-categories H-N as well as those policy instruments in CSE-categories Q1 and Q2 that are notified to the WTO.

system. The negative number in the cell for market price support not covered by the WTO-database (-6.3 per cent) indicates that market price support as measured by the OECD is higher than market price support as measured by the WTO.

For the other measures, the result is more ambiguous. Most non-excluded direct payments are regarded by the OECD as payments linked to production volumes, inputs or factors of production. Being tied to production, it follows from the logic of the WTO notification system that they are not exempt from reduction commitments. Blue box payments are also often regarded as being linked to current factors of production. This also follows the logic of the WTO-notification system as blue box payments are, in principle, production- and/or trade-distorting. Unfortunately, the PSE classification system does not give hints as whether or not a payment is implemented under a production-limiting program (so as to satisfy the general blue box criterion). Such information would probably fit into the OECD's practice of using the implementation criterion as the basis for classifying support measures. As a result, non-exempt direct payments and blue box payments look quite similar in the PSE-framework, but are very different when it comes to the WTO-notifications.

The WTO green box appears to be a ragbag in which almost every PSE-category (with the obvious exception of A1) is represented. This underlies the very heterogeneous character of green box payments. Almost 40 per cent of all green box payments are, on average for the four countries, regarded as payments requiring production, and almost 60 per cent of all green box payments are based on (current or non-current) acreage, animal numbers, farm receipts, or farm income. That means that a large share of green box payments is not targeted towards farmers directly, with the US food stamp program being the most prominent example.

Table 9. Decomposition of total agricultural support by PSE and WTO support classification systems ¹⁾

PSE-categories / WTO-boxes		Aggregate Measurement of Support (AMS)		Blue box	Green box	Not covered by WTO-notifications	Total
		Market price support	Non-excluded dir. payments				
A1	Market price support	20.3				3.1	23.4
A2	Output payments		0.7	0.5	0.1	0.1	1.4
B1	Variable input use		0.6		0.2	3.0	3.8
B2	Fixed capital formation		0.2		2.6	0.3	3.1
B3	On-farm services				2.8	0.2	3.0
C	Current A/An/R/I ²⁾ , prod. req.		0.5	3.2	6.8	1.0	11.4
D	Non-current A/An/R/I ²⁾ , prod. req.			0.4	0.8	0.1	1.3
E	Non-curr. A/An/R/I ²⁾ , prod. not req.		0.4		17.6		17.9
F	Non-commodity criteria				1.9		2.0
G	Miscellaneous payments				0.1	0.9	0.9
H	Research and development				2.4		2.4
I	Agricultural schools				0.5		0.5
J	Inspection services				0.8		0.8
K	Infrastructure				2.4	0.1	2.5
L	Marketing and promotion		0.2		14.0	1.7	15.9
M	Public stockholding				0.1	0.1	0.2
N	Miscellaneous payments		0.1		1.2	0.1	1.3
Q1	Commodity specific transfers to consumers from taxpayers		0.1				0.1
Q2	Non-commodity specific transfers to consumers from taxpayers				11.9		12.0
Not covered by PSE-database and/or differences in values		-6.3	0.2		2.2		-4.0
Total		14.0	2.8	4.1	68.6	10.5	

¹⁾ The numbers in each cell indicate the relative share for the corresponding PSE-category and WTO-notification category in 2007 of total support (defined as the unweighted average for Norway, Switzerland, the EU and the US)

²⁾ Area, number of animals, farm receipts or farm income

Source: Own calculations based on OECD (2011) and WTO (div.)

Table 9 seems to support the hypothesis that there exists a relatively close link between program implementation (OECD criterion) and the programs' production- and/or trade-distorting effects (WTO criterion): The higher the payment is on the PSE-hierarchy, the more likely it has production- and/or trade distorting effects. Market price support is the most obvious example, although there are significant differences with respect to product coverage and reporting method. This result is less pronounced for the blue box and even less obvious for the green box. However, the country-specific analysis has identified a number of payments in all four countries for which their notification procedure is questionable. We expect that a process of clarifying the questionable notification of payments would

contribute to a more intuitive relationship between program implementation and the programs' distorting effects.

4. Applications

4.1. 'Pre notifications' of domestic support based on the OECD system

In this section, we seek to illustrate how the PSE-database could be used to produce a glimpse of not-yet-WTO-notified domestic support, so-called 'pre notifications'. This exercise serves several purposes. First, it reinforces the close similarity between the two approaches by making small additions to the PSE-database which considerably narrow down the gap between notified domestic support and the PSE. Second, it demonstrates that one is able to produce a quite reasonable glimpse of 'yet to be notified' WTO domestic support every time an updated version of the PSE-database is published. This considerably reduces the time-lag currently characterizing WTO notifications. Third, as shown below, the adjustments needed are quite limited and use information from existing WTO-notifications. The method is thus relatively modest in time and resources.

The pre notifications are achieved by adding up individual support measures in the PSE-database by the WTO-categories market price support, non-existing direct payments, blue box and green box. New support measures introduced in years for which official WTO notifications are not yet available, have been matched where possible. The adjustments made to the PSE-database concern foremost the calculation of market price support which has been identified the most important source of difference between the two methods (Orden *et al.* 2011). We calculate market price support only for those commodities that are listed in the WTO-notifications and for which data are available in the PSE-database. In principle, we use the administrative prices and reference prices from the WTO-notifications and apply them to the quantity of production reported in the PSE-database. Some country-specific adjustments apply, which will be dealt with below. We present the comparisons before the calculation of *de minimis* exemption of product-specific and non-product-specific support from current AMS.²²

Figure 13 shows the official WTO-notifications and the 'pre notifications' based on the PSE-database for Norway for the period 1995 to 2010. On average, the absolute annual difference between the value of notified support (including *de minimis*) and pre notified support (including *de minimis*) is reduced to about NOK 220 mill. from a value of around NOK 340 mill. as reported in figure 1 above. The rather low reduction can be attributed to two aspects. First, there is a rather good fit between notified support and the PSE-database in the first hand. Second, Norway has until 2004 notified budget outlays for its grain market regulation as 'public stockholding' in the green box. These outlays have no counterpart in the PSE-database as they only keep up domestic grain prices (and hence are covered by the MPS element of the PSE).

²² We do so to keep the comparison as straight forward as possible. One could of course use the value of production contained in the PSE-database to check whether the product-specific *de minimis* level is exceeded for a specific commodity, or the non-product specific *de minimis* level for all commodities.

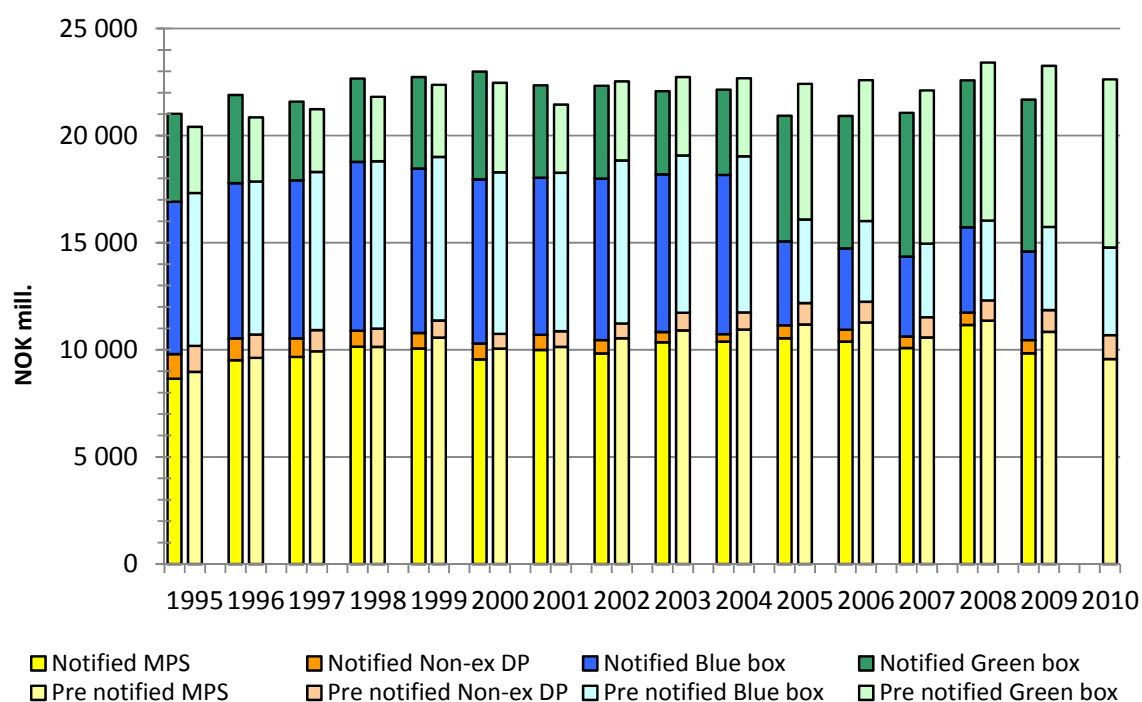


Figure 13. Notifications and pre notifications for Norway from 1995 to 2010 (NOK mill.)

The calculation of market price support using the PSE-database is complicated by the fact that Norway is the only of the four countries to subtract the implicit value of above world market feed cereal prices from its MPS for milk and meat products ('farm feed adjustment' in the WTO notifications and 'excess feed costs' in OECD parlance). The PSE's MPS for all grains is used to approximate farm feed adjustment as most of Norwegian grain production goes into food concentrates. Moreover, Norway has repeatedly abolished administrative prices for certain commodities (and hence omitted MPS for the commodity in question) so as to stay within its limit on current total AMS.²³ Norway has notified support until 2009 so that pre notifications are shown for 2010 only. The numbers for 2010 indicate a reduction in market price support largely due to the abolishment of the administrative price of beef as of July, 1 2009. Support in the other WTO categories is estimated to remain mainly unchanged.

²³ Incidentally, Norway apparently didn't succeed with this strategy in 2009, when the country reported current total AMS slightly above the limit.

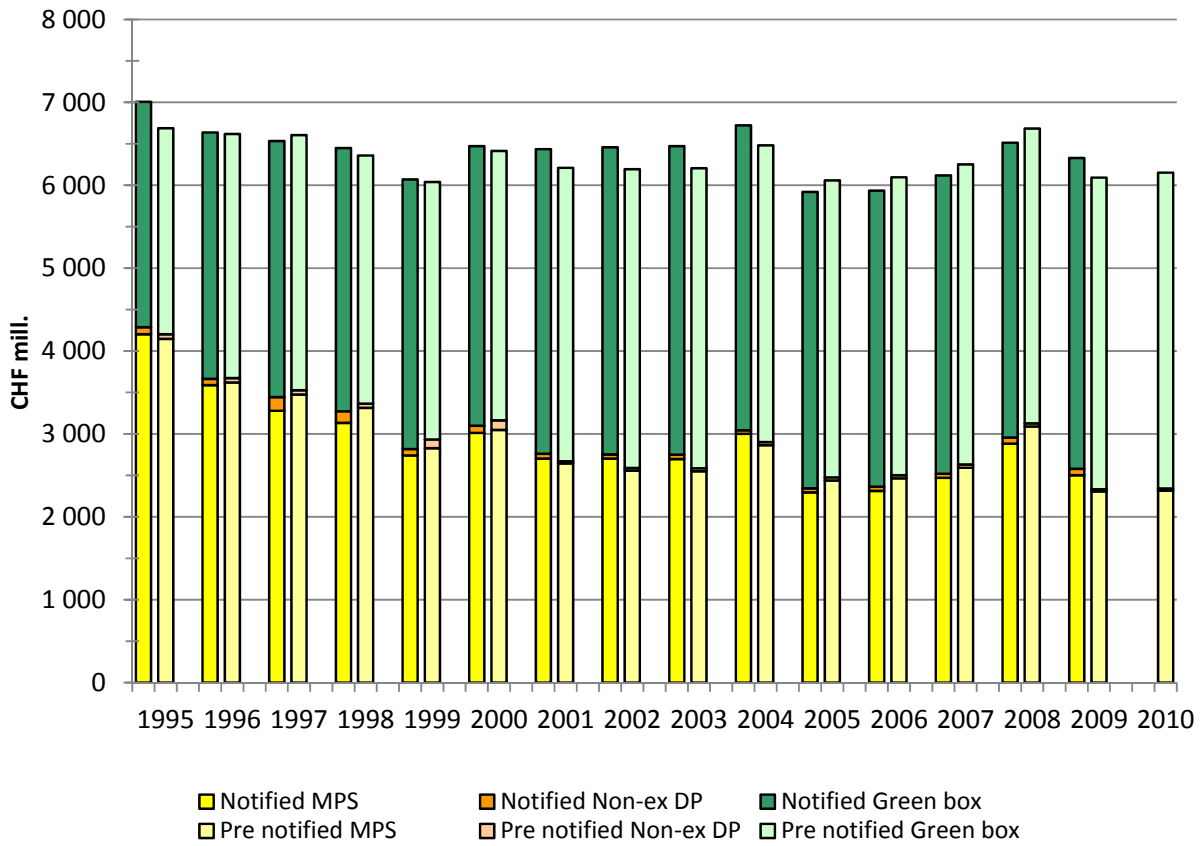


Figure 14. Notifications and pre notifications for Switzerland from 1995 to 2010 (CHF mill.)

The pre notifications for Switzerland also indicate that the gap between WTO notified domestic support and the PSE can be significantly reduced by making small adjustments (figure 14). On average, the absolute annual difference between the value of notified support (including *de minimis*) and total PSE is reduced from around CHF 1,000 mill. to CHF 71 mill. Some differences remain which are largely attributed to prevailing differences in MPS. The pre notifications for 2010 indicate a slight increase in green box support and no major changes in MPS and non-ex DP.

Figure 15 shows notifications and pre notifications for the EU. As the latest notifications of domestic support relate to 2007 (marketing year 2007/08), the pre notifications cover three years, 2008 to 2010. The EU calculates the MPS part of the WTO notifications for processed dairy products (butter and skim milk powder), while the OECD's MPS is for the raw commodity (raw milk). Moreover, the EU has calculated EMS (Equivalent Measurement of Support) for a large variety of fruits and vegetables until 2006. EMS is a substitute for AMS and applies to cases where the calculation of the MPS component of the AMS is not practicable (Annex 4 of the Uruguay Round Agreement on Agriculture). Regarding dairy, the quantity of production used for the pre notifications is based on a fixed share of raw milk processed into butter and skim milk powder, respectively. The fixed share is defined as the average share for the 1995 to 2007 period and shows only small annual variation. Regarding fruits and vegetables, the MPS component is defined as the sum of the OECD's MPS for tomatoes, the MPS for wine, and the MPS for other commodities. Other commodities comprise all commodities for which no separate MPS is

calculated. In line with the EU's EMS notifications on fruits and vegetables, MPS for wine is taken out of the calculations from 2001 onwards, while the MPS for tomatoes and the MPS for other commodities is abolished from 2007 onwards, when the EU stopped to calculate EMS for fruits and vegetables in response to reforms of the fruits and vegetables sector.

On average, the absolute annual difference between the value of notified support (including *de minimis*) and total PSE is more than halved from 20,890 mill. Euro to 7,961 mill. Euro. For all years after 1997, there are small differences in market price support and non-ex DP using the two methods. This has been due to the removal of rice, oilseeds and soybeans from the MPS calculations, and allowing for negative value for MPS. The MPS commodity coverage remains constant throughout the period.

As a result of the ongoing farm policy reform in the EU, numerous programs have entered the PSE-database since 2007. This includes payments made in connection with art. 68 allowing member states for some flexibility to target direct payments according to national preferences. Those payments have been put into the green box in case of environmental programs and in the blue box if they were animal or acreage payments. The pre notifications for the years 2008 to 2010 show an increase of total support compared to 2007. The increase stems mostly from inflated green box payments. Market price support and non-ex DP are about to remain at their 2007 level. The phasing-in of the Single Farm Payment Scheme (SFP) Scheme is illustrated in the shift of blue box support to green box support from 2009 to 2010. SFP payments (green box) are increased at the expense of per hectare payments to crops (blue box), maintaining the total of blue box and green box support.

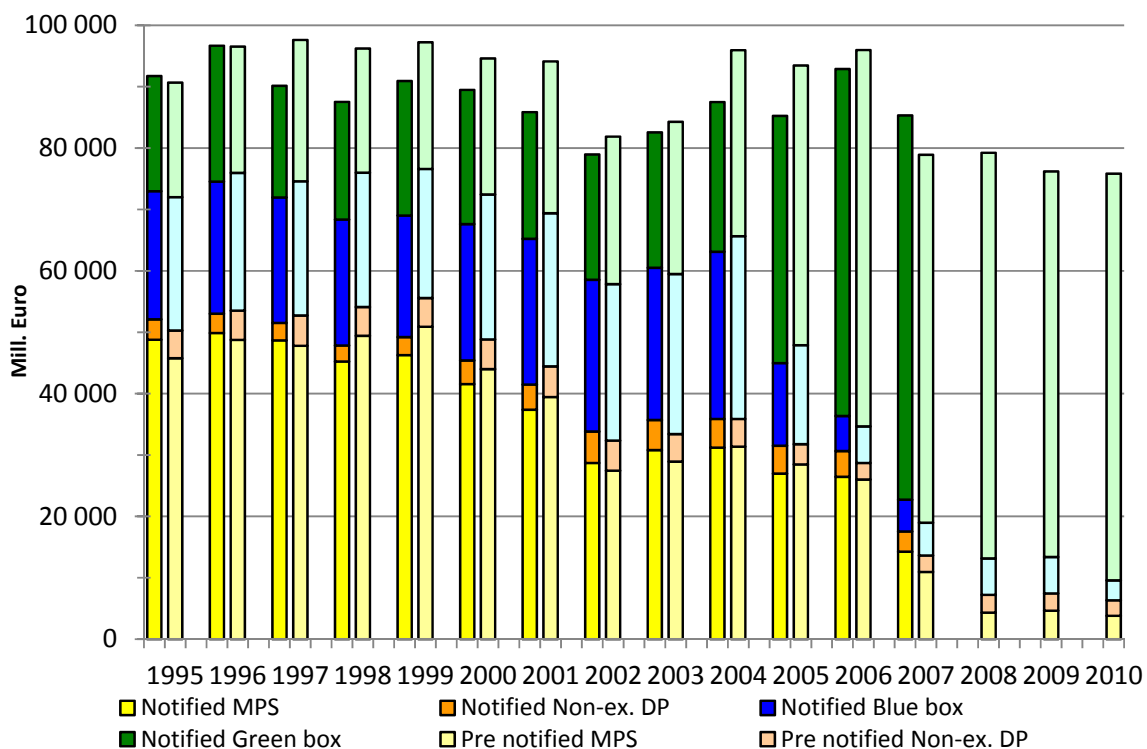


Figure 15. Notifications and pre notifications for the EU from 1995 to 2010 (mill. Euro)

The notifications and pre notifications for the US are shown in figure 16. The latest official notifications are from 2009, such that pre notifications are shown for 2010. On average, the absolute annual difference between the value of notified support (including *de minimis*) and total PSE is narrowed down from around \$4,000 million to \$1,640 million. MPS is calculated for dairy and sugar only (as it is the case in the WTO notifications). No new major direct payments have been introduced to US agricultural policies since 2009 (Blandford and Orden 2011).

There are small differences in MPS and non-ex DP, even after 2007 when the US started notifying MPS for butter, non-fat dry milk and cheddar cheese instead of dairy milk, which somewhat complicates the MPS calculations, as the PSE only contain volume of production for dairy milk. There is a large difference in blue box support in the one year the US reported blue box payments (1995).

The pre notifications for 2010 indicate a sharp increase in green box payments mainly due to higher levels of domestic food aid. There are minor changes for MPS and non-ex DP.

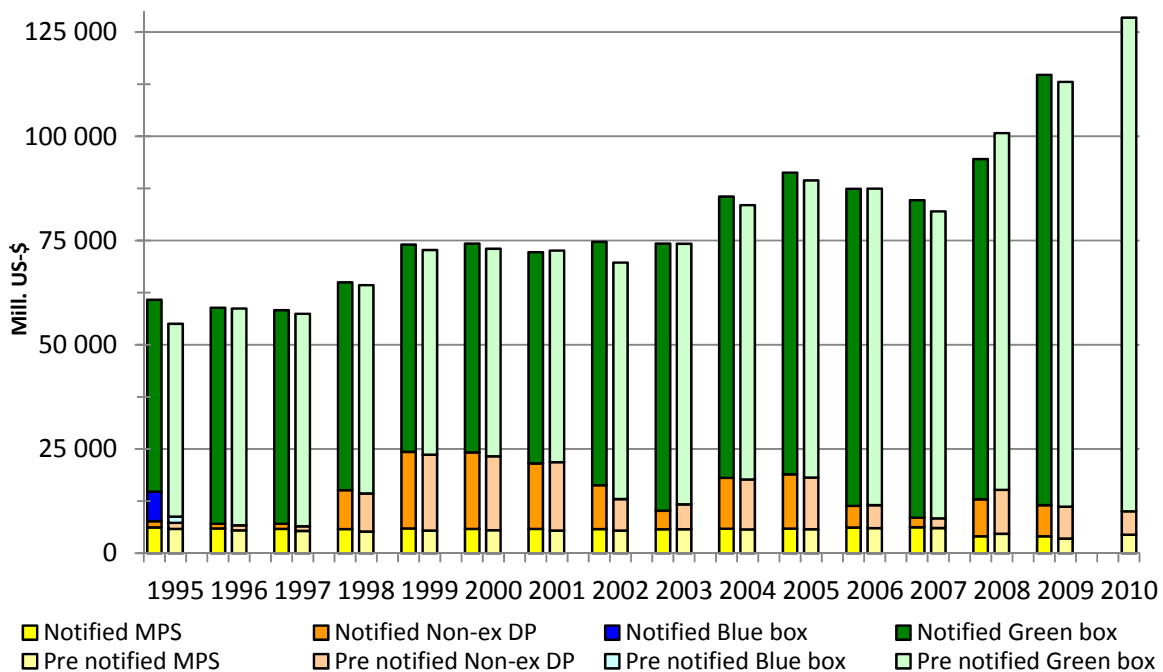


Figure 14. Notifications and pre notifications for the US from 1995 to 2010 (mill. US-\$)

4.2. Policy indicators in sector models

The combined use of both classification systems as policy indicators in agricultural sector models is surprisingly limited. While modelers and others dealing with agricultural policy analysis have made frequently use of the PSE database as an input for sector models, the WTO-notifications on domestic support have so far only played a minor role in modeling.

There may be two reasons for this observation. First, there may be a lack of demand from the policy arena. Since the conclusion of the Uruguay-round in 1995, policy makers' and modelers' focus has rather been on market access and export subsidies than on domestic support. This may be due to the fact that the WTO reduction commitments regarding domestic support measures have so far not been a binding

restriction for agricultural policy reforms in most developed countries. For instance, the 2002 US Farm Bill in fact increased spending to agriculture significantly, but did not have any strong impacts on the US' domestic support reduction commitments. A notable exception is Norway, that frequently notifies current AMS at levels close to (and in 2008 slightly above) its commitment level. The limit on bound AMS has triggered various reforms (e.g., abolishment of administrative prices for poultry and beef) that can be attributed directly to the commitment level.

Second, many sector models at the global and general equilibrium level, include agricultural policies at a highly aggregated level. For example, the general equilibrium model of Robinson and Thierfelder (2006) distinguishes six different policy instruments, while the GTAP model in the version of Jensen *et al.* (2009) covers five support measures. These models basically aggregate the single policy instruments reported in the PSE-database up to the number of policy instruments covered by the models. It is easy to imagine that such an aggregation from several hundred support measures into five or six instruments easily runs across the main WTO classification categories amber, blue and green box (Jensen *et al.* 2009) The CAPRI model is one of few sector models with a very detailed representation of policy instruments. Its partial equilibrium nature and highly disaggregated commodity coverage focusing on the EU27, allows the representation of almost thirty coupled payments in addition to decoupled income support provided by the Single Farm Payment (SFP). The CAPRI model covers most CAP Pillar I payments, but falls short of including Pillar II payments.²⁴ To the best of our knowledge, the only model in which policy instruments are currently grouped according to the WTO classification categories is the Norwegian model Jordmod.²⁵ This may not come as a surprise, because Norway is one of the few WTO member states for which the limits on its current AMS have been binding for many years. Therefore, there exists considerable political interest regarding the question of how to reform Norwegian agricultural policies not only in the context of the current Uruguay-round agreement, but in particular also with regard to a possible conclusion of the Doha-round.

5. Conclusion

The analysis in this paper has arrived at some interesting findings. First of all, it has demonstrated a rather close link between the measures contained in the PSE-database and the measures notified to the WTO. A careful examination of the individual policy measures reveals considerable correspondence. This is important in the context of interpreting the magnitude of support as presented in each of the two frameworks. It also means that the process of reconciliation between the two datasets should be possible if found desirable. This link could still be improved by further disaggregation: there are few cases in the three countries studied where the policies included in one dataset could not be found in the other. The notifications to the SCM, on the other hand, were useful elaborations of policy detail but lacked the quantification of the WTO Agricultural notifications or the OECD PSEs.

²⁴ The inclusion of Pillar II payments is currently being investigated.

²⁵ Mittenzwei and Gaasland (2008) contains a comprehensive description of the model in Norwegian, while Brunstad *et al.* (2005) presents a short overview of the model in English.

A second finding of our analysis has added to the considerable literature on potential trade distortions from green box subsidies (e.g., de Gorter 2009 and Anton 2009 and the references therein).²⁶ While the literature often provides arguments based on economic theory as to why green box payments may be trade-distorting, our arguments are based on the simple fact that governments themselves apparently regard those payments as ‘requiring production’ as a result of the PSE classification process. Hence, the analysis has found various examples of support measures that are labeled ‘minimal distorting’ (WTO green box) and yet appear as ‘requiring production’ in the PSE. Criteria for specific types of payments in the green box distinguish between two conditions: that of “no production required” and the condition that the amount of payment “not be related to the level of production”. So the “production required” category of payments in the OECD PSEs does not always imply a violation of the green box criteria. The critical link between green box direct payments and payments requiring production as classified in the PSE is whether a program is implemented in a way that stimulates or maintains production levels. If so it might appear to violate the basic green box criteria stating that *“domestic support measures for which exemption from the reduction commitments is claimed shall meet the fundamental requirement that they have no, or at most minimal, trade-distorting effects or effects on production”* (WTO 1994).

Regarding environmental programs and regional assistance programs, the critical question from the viewpoint of the Green Box criteria is whether the payment rate just compensates for additional costs? Or does the support measure include an incentive element for participation in the program? In economic terms the question can be framed as whether the payment is based on farm income considerations or is it meant as a payment for the provision of public goods reflecting society’s willingness to pay? In each of these cases, the payment would run the risk of containing rents to producers that are not foreseen in the policy-specific criteria for exempt direct payments (WTO green box). This is in particular true for environmental programs and regional assistance programs which, in both the EU, Norway and Switzerland, are regarded as direct payments requiring production. Some of these measures are even classified as output payments and as such are clearly linked to production. The most striking examples are the Swiss Milk Price Supplement for Cheese Production (MPSCP) and the Payments for Non-Silage Feeding of Cows (PNSFC) granted as payments per ton of milk with the purpose of sustaining the profitability of cheese production.

The correct notification of support measures (and even measures that are not notified at all) is a legal issue that might have to be tested case by case through the WTO dispute settlement mechanism. It is hence not a matter of economic reasoning or evidence. The following case may illustrate this point. In 2010, the US claimed in the Committee on Subsidies and Countervailing Measures that the Swiss Wool Program was a measure prohibited under Art. 3.1(b) of the Agreement on Subsidies and Countervailing Measures as it provided payments to wool processors contingent on their purchase of domestic wool.²⁷

²⁶ This does not imply that all these measures are out of compliance with WTO disciplines. This issue is taken up in more detail in the case of the EU by Swinbank (2008).

²⁷ We have not been able to identify that measure in the PSE database although it is mentioned in the cookbook for Switzerland.

In its response, Switzerland argued that wool is an agricultural product for which Art. 3.1(b) does not apply and continued that the country “*imports significantly more than it produces domestically and consequently, no trade distortion can be observed*” (WTO 2010). Relying on economic logic, we would argue that in the absence of the program Switzerland would import even more wool, thus demonstrating the trade distortion of the measure. However, Switzerland decided to notify the measure as a non-exempt direct payment (a part of its AMS).

A third contribution of the study has been to build upon the findings in Orden *et al.* (2011) that emphasise the differences in scope, coverage and methodology between the two measures of market price support. We have expanded the comparison to cover all the categories of domestic support notifications and the complete PSE-database. This has uncovered differences that were not evident in the analysis of market price support policy. Moreover, examining the individual instruments has complemented the work by Effland (2011) that mainly compared sub-groups of policies.

A fourth finding of the study relates to the limited ability of the WTO domestic support notifications as they are currently provided to mirror ‘real’ agricultural policy reform steps. The PSE-database seems to be better shaped to monitor and evaluate the effects of agricultural policy reforms, particularly when the instruments concerned are direct payments with a range of conditionalities imposed. The WTO green box is a mixture of policy instruments with varying impacts on production and varying impacts on trade. The contributions of the notifications to the WTO Committee on Subsidies and Countervailing Measures do not seem to significantly improve the information that can be extracted from the OECD’s cookbooks and the notifications to the Committee on Agriculture. This result is in line with findings in Collins-Williams and Wolfe (2010) that the CSCM notifications, as well as the agricultural notifications, play no role for the WTO dispute settlement mechanism. For some countries, it may provide valuable overview and background information on some support measures. However, the fact that the SCM notifications are intended to give enough information to allow other countries to assess trade impacts could have some benefits in future notification consolidation.

A fifth finding is that it would be possible with relatively little in the way of additional resources to use up-to-date PSE data to compile credible advanced WTO notifications, thus eliminating much of the lag that currently makes the WTO notifications less useful than they might be. This would not replace the legal obligation for notification but it would allow other countries to anticipate the official submission to the Committee on Agriculture.

Based on these findings, some preliminary policy conclusions can be drawn. First of all, it is clear that a closer cooperation between the WTO and the OECD has the potential to enhance the understanding of the similarities and differences in the two databases. In particular, such undertaking would improve the correspondence between policy instruments notified to the WTO and policy instruments captured by the OECD. An important improvement could be achieved if the WTO notifications followed the principle used by the OECD to notify only single policy instruments (instead of policies *en bloc*). This would definitely simplify the matching process. Such collaboration could also prove useful as an additional source of information to assess the current placement of the different policy instruments in the PSE-categories and

WTO boxes of domestic support.²⁸ As a result, one might expect tighter disciplines for notifying domestic support measures, especially as the PSE-database could not only provide more information about a notified support measure but in doing so suggest the 'correct' notification of that measure.

Taking this argument a stage further, if every support measure could be clearly identified in the PSE-database and the WTO-notification, there would no longer be a strong need to keep two separate databases. Transparency could be significantly increased by merging the two databases. Two challenges would face any such radical integration. First, the OECD PSE-database currently exists only for 19 countries - 14 OECD members and five associated countries (Brazil, China, South Africa, Russia and Ukraine). A similar dataset is in the process of being constructed for 18 countries in Latin America and the Caribbean. Policy databases are also under construction for Africa. But nevertheless considerable efforts would be needed in order to cover all WTO members.

A better coordination of the two databases, and even a merger, would help in a small way to address the more fundamental question as to how to design an accounting framework that produces the basis on which evaluation can be made of the extent to which the support measures are achieving the desired policy objectives. This question is at the core of agricultural policy analysis that frequently uses economic models and subsequent empirical applications. Basing those models on data that clearly identifies the conditions of payments made to agricultural producers is a priority. Hence the incorporation of the policy classifications used in these two accounting frameworks into the databases used in applied models would be a constructive step in policy analysis. And if the pre notifications based on the annual update of the PSE-database described in this paper were feasible, this would add to the currency of data and may even provide an incentive to governments to submit their own WTO notifications earlier than would otherwise be the case.

²⁸ Improving the correspondence between the data sets would not influence the legal obligations of WTO members.

References

- AAD (The Norwegian Department for Labor and Administration) (2004). *St.prp. nr. 66 (2003–2004) Om jordbruksoppgjøret 2004 – endringer i statsbudsjettet for 2004 m.m.* Oslo.
- Anton, J. (2009). "An analysis for EU, US and Japanese green box spending". pp. 137–238. In: Meléndez-Ortiz, Bellmann, C. and Hepburn, J. (eds). *Agricultural subsidies in the WTO green box*. Cambridge University Press. Cambridge.
- Blandford, D. and D. Orden (2011). The United States. In Orden, Blandford and Josling (eds). *WTO Disciplines on Agricultural Support: Seeking a Fair Basis for Trade*. Cambridge, Cambridge University Press.
- Brink, L. (2011). *The WTO disciplines on domestic support*. pp. 23–58. In: Orden, Blandford and Josling (eds). *WTO Disciplines on Agricultural Support: Seeking a Fair Basis for Trade*. Cambridge, Cambridge University Press.
- Brunstad, R.J., Gaasland, I., and Vårdal, E. (2005). "Multifunctionality of agriculture: an inquiry into the complementarity between landscape preservation and food security". *European Review of Agricultural Economics* Vol. 32 (4): 469–488.
- Burfisher, M. (ed) (2001). *Agricultural Policy Reform in the WTO—The Road Ahead*. Market and Trade Economics Division, Economic Research Service, U.S. Department of Agriculture. Agricultural Economic Report No. 802.
- Collins-Williams, T. and R. Wolfe (2010). "Transparency as a trade policy tool: The WTO's cloudy windows", *World Trade Review* Vol. 9 (4), pp 551–581.
- De Gorter, H. (2009). "The distributional structure of US green box subsidies". pp. 304–325. In: Meléndez-Ortiz, Bellmann, C. and Hepburn, J. (eds). *Agricultural subsidies in the WTO green box*. Cambridge University Press. Cambridge.
- Effland, A. (2011). *Classifying and Measuring Agricultural Support. Identifying Differences Between the WTO and the OECD System*. EIB-74. U.S. Department of Agriculture. Economics Research Service. March 2011.
- Gaasland, I., Garcia, R., and Vaardal, E. (2011). *Norway*. Pp. 189–220. In: Orden, Blandford and Josling (eds). *WTO Disciplines on Agricultural Support: Seeking a Fair Basis for Trade*. Cambridge, Cambridge University Press.
- Jensen, H.G., Urban, K. and Brockmeier, M. (2009). *OTDS Reductions in the GTAP Database/Model: What can be done and how*. GTAP Resource 3092.
(https://www.gtap.agecon.purdue.edu/resources/res_display.asp?RecordID=3092, accessed 11/07/11)
- Josling, T. and A. Swinbank (2011). The European Union, in Orden, Blandford and Josling (eds). *WTO Disciplines on Agricultural Support: Seeking a Fair Basis for Trade*. Cambridge, Cambridge University Press.

MAF (Norwegian Ministry for Agriculture and Food). (2002). Regulation on direct payments in agriculture (Web: <http://www.lovdatab.no/for/sf/ld/xd-20020322-0283.html>, downloaded Oct, 24 2011 in Norwegian).

Mittenzwei, K. and Gaasland, I. (2008). Dokumentasjon av Jordmod: Modellbeskrivelse og analyser. NILF-rapport 2008–3. Norwegian Agricultural Economics Research Institute. Oslo.

Momagri (2011). *Global Support to Agricultural Production. Presentation, results and findings for the United States and Europe*. Momagri. Paris.

NAA (Norwegian Agricultural Authority) (2011). *Statistics from the applications to the direct payments database*. Oslo. [Updated data can be downloaded from <http://32.247.61.17/skf/prodrapp.htm>, in Norwegian]

OECD (2011). *Producer and Consumer Support Estimates database*. OECD. Paris. [The updated country-specific databases can be downloaded from http://www.oecd.org/document/59/0,3746,en_2649_37401_39551355_1_1_1_37401,00.html]

OECD (2010). *OECD's Producer support estimate and related indicators of agricultural support. Concepts, calculations, interpretation and use (The PSE Manual)*. Organization for Economic Cooperation and Development. Paris.

Orden, D., D. Blandford and T. Josling (2011). *WTO Disciplines on Agricultural Support: Seeking a Fair Basis for Trade*. Cambridge, Cambridge University Press.

Statistics Norway (2011). *Farms with animals*. (Web: <http://www.ssb.no/emner/10/04/10/jordhus>, downloaded Oct, 24 2011; in Norwegian)

Steenblik, R. and J. Simon, (2006). "A New Template for Notifying Subsidies to the WTO", Global Subsidies Initiative, IISD, Switzerland

Swinbank, A. (2008). "Potential WTO Challenges to the CAP". *Canadian Journal of Agricultural Economics* 56(4): 445–456.

Swiss federal council (2011). *Verordnung über die Direktzahlungen an die Landwirtschaft vom 7. Dezember 1998*. Bern. Switzerland. (German). Regulation on direct payments to agriculture

WTO (1994). *Agreement on Agriculture*. Part of Annex 1A "Multilateral Agreements on Trade in Goods" of the Agreement Establishing the World Trade Organization. Marrakesh Declaration of 15 April 1994. Marrakesh.

WTO (1995). *Notification Requirements and Formats*. G/AG/2. World Trade Organization. Geneva. 30 June 1995.

WTO (1996). *Technical Cooperation Handbook on Notification Requirements*. WT/NC/NOTIF/AG/1. World Trade Organization. Geneva. 9 September 1996.

WTO (1999a). *Notification*. G/AG/N/CHE/20. World Trade Organization. Geneva. 11 June 1999.

WTO (1999b). *Notification concerning new or modified domestic support measures exempt from reduction*. G/AG/N/EEC/17. World Trade Organizatio. Geneva. 17 September 1999.

WTO (2001). *Replies to Questions from the United States regarding the New and Full Notification of Switzerland*. G/SCM/Q2/CHE/11. World Trade Organization. Geneva. 25 September 2001

WTO (2009a). *Subsidies. New and Full Notification Pursuant to Article XVI:1 of the GATT 1994 and Article 25 of the Agreement on Subsidies and Countervailing Measures*. G/SCM/N/186/EEC. World Trade Organization. Geneva. 23 December 2009.

WTO (2009b). *Notification concerning new or modified domestic support measures exempt from reduction*. G/AG/N/58/EEC. World Trade Organization. Geneva. 24 February 2009.

WTO (2010). *Replies to Questions from the United States regarding the New and Full Notification of Switzerland*. G/SCM/Q2/CHE/19 2010G/SCM/Q2/CHE/11, World Trade Organization. Geneva. 17 March 2010.

WTO (2011a). *Subsidies. New and Full Notification Pursuant to Article XVI:1 of the GATT 1994 and Article 25 of the Agreement on Subsidies and Countervailing Measures*. G/SCM/N/220/NOR. World Trade Organization. Geneva. 2 September 2011.

WTO (2011b). *Subsidies. New and Full Notification Pursuant to Article XVI:1 of the GATT 1994 and Article 25 of the Agreement on Subsidies and Countervailing Measures*. G/SCM/N/220/CHE. World Trade Organization. Geneva. 24 June 2011.

WTO (div). *Notifications to the Committee on Agriculture*. World Trade Organization. Geneva. [The numerous notifications can be downloaded from the WTO's members' transparency toolkit website: http://wto.org/english/tratop_e/agric_e/transparency_toolkit_e.htm]

Robinson, S. and Thierfelder, K. (2006). "The Effects of Domestic Agricultural Reforms and Market Access on Trade and Production in Less Developed Countries". pp. 103–121 In: Diaz-Bonilla, E., Frandsen, S.E., and Robinson, S. (eds). *WTO negotiations and agricultural trade liberalization: the effect of developed countries' policies on developing countries*. CAB International.

Annex. Matching support measures for Norway in 2009 by PSE-categories

PSE-name	PSE-category	WTO-name	WTO-box	PSE-value	WTO-value
Barley MPS	A1	Barley	MPS	500.1	559.1
Beef and Veal MPS	A1	Beef	MPS	1497.4	1256.2
Eggs MPS	A1	Egg	MPS	278.3	417.9
Milk MPS	A1	Cow milk	MPS	2067.4	4309.0
Oats MPS	A1	Oats	MPS	237.3	288.3
Pigmeat MPS	A1	Pork	MPS	1141.2	1810.2
Poultry meat MPS	A1	Poultry	Not covered	762.9	0.0
Sheep meat MPS	A1	Sheep	MPS	159.6	768.5
Wheat MPS	A1	Wheat	MPS	267.2	310.8
Other MPS	A1	Rye, Goat milk, Potatoes	MPS	2027.6	497.3
On-farm storage subsidy - wheat (separated out from the Grain and feed-stuff market regulation direct payments not based on output (grains) item)	A2	Grain price support	Non-ex DP	0.0	0.0
On-farm storage subsidy - barley (separated out from the Grain and feed-stuff market regulation direct payments not based on output (grains) item)	A2	Grain price support	Non-ex DP	0.0	0.0
On-farm storage subsidy - oats (separated out from the Grain and feed-stuff market regulation direct payments not based on output (grains) item)	A2	Grain price support	Non-ex DP	0.0	0.0
Subsidy to transportation for wheat (separated out from the Grain and feed-stuff market regulation direct payments not based on output (grains) item)	A2	Grain price support	Non-ex DP	0.0	0.0
Subsidy to transportation for barley (separated out from the Grain and feed-stuff market regulation direct payments not based on output (grains) item)	A2	Grain price support	Non-ex DP	0.0	0.0
Subsidy to transportation for oats (separated out from the Grain and feed-stuff market regulation direct payments not based on output (grains) item)	A2	Grain price support	Non-ex DP	0.0	0.0
Price support to beef and veal Deficiency payments (base and regional)	A2	Base deficiency payment Beef	Non-ex DP	0.0	0.0
Price support to beef and veal Deficiency payments (base and regional)	A2	Regional Deficiency Payment to Meat Production (Art. 6.5 (a)(ii))	Blue box	386.4	508.0
Price support to milk and milk products deficiency payments (base and regional)	A2	Base deficiency payment, Base deficiency payment	Non-ex DP	58.9	59.7
Price support to milk and milk products deficiency payments (base and regional)	A2	Regional Deficiency Payment to Milk Production (Art 6.5 (a)(ii))	Blue box	457.8	464.1

PSE-name	PSE-category	WTO-name	WTO-box	PSE-value	WTO-value
Price support to pigmeat Deficiency payments (base and regional)	A2	Regional Deficiency Payment to Meat Production (Art. 6.5 (a)(ii))	Blue box	42.2	55.5
Price support to sheepmeat Deficiency payments (base and regional)	A2	Base deficiency payment Sheep	Non-ex DP	226.0	86.8
Price support to poultrymeat Deficiency payments (base and regional)	A2	Base deficiency payment Poultry	Non-ex DP	0.0	0.0
Price support to poultrymeat Deficiency payments (base and regional)	A2	Regional Deficiency Payment to Meat Production (Art. 6.5 (a)(ii))	Blue box	11.2	14.7
Transport subsidy - meat eggs cereal WHEAT	A2	Grain price support	Not covered	41.1	0.0
Transport subsidy - meat eggs cereal BARLEY	A2	Grain price support	Not covered	68.6	0.0
Transport subsidy - meat eggs cereal OATS	A2	Grain price support	Not covered	36.0	0.0
Transport subsidy - meat eggs cereal BEEF and VEAL	A2	Transport subsidy, Beef	Non-ex DP	26.7	20.7
Transport subsidy - meat eggs cereal PIGMEAT	A2	Transport subsidy, Pork	Non-ex DP	22.8	29.4
Transport subsidy - meat eggs cereal SHEEPMEAT	A2	Transport subsidy, Sheep	Non-ex DP	6.9	5.8
Transport subsidy - meat eggs cereal EGGS	A2	Transport subsidy, Egg	Non-ex DP	7.3	8.5
Price support to Norwegian wool	A2	Wool subsidy	Non-ex DP	137.3	137.3
Market regulation subsidy	A2	Marketing subsidy fruit, berries and vegetables, Base deficiency payment, apples and pears	Non-ex DP	0.0	0.0
Potato market system	A2	Deficiency payments	Non-ex DP	0.0	0.0
Transport subsidy for F & V	A2	Transport subsidy	Non-ex DP	0.0	0.0
Distr. and qual. subs. horticulture prod.	A2	Regional deficiency payment	Non-ex DP	64.7	64.7
Structural income support for milk production deficiency payment	A2	Structural Income Support (Art. 6.5 (a)(ii)) until 2003	Blue box	0.0	972.1
Contract production scheme for eggs	A2		Not covered	0.0	0.0
Regional Deficiency payment for eggs	A2		Not covered	8.9	0.0
Fuel tax concession	B1		Not covered	456.6	0.0
Support to meadowseed storage	B1	Storage of meadow seed	Green box	6.6	6.6
Subsidy to transportation of feedstuff (separated out from the Grain and feed-stuff market regulation direct payments not based on output (grains) item)	B1	Feed transport subsidies	Non-ex DP	0.0	0.0
Transport subsidy (Subsidy to food grain)	B1	Feed transport subsidies	Non-ex DP	148.0	171.2
Energy saving (greenhouses)	B1	Subsidy to greenhouses	Green box	0.0	0.0
Other welfare schemes	B1		Not covered	69.7	0.0
Interest rate concession	B2	Interest concessions	Green box	39.9	32.7

PSE-name	PSE-category	WTO-name	WTO-box	PSE-value	WTO-value
Small-animal fund (Compensation for losses payment to farmers)	B2	Small animal fund shared with GSSEH4	Green box	0.0	0.0
Compensation for losses of livestock due to predators	B2		Not covered	75.4	0.0
Mountain dairy farmers	B2	Subsidy to Summer Dairy Operations in Mountainous Regions	Green box	0.0	0.0
Storehouses for fruit	B2	Storage subsidy, fruit	Non-ex DP	8.0	8.0
Agricultural Development Fund	B2	The Agricultural Development Fund	Green box	259.7	534.4
Agricultural Development Fund interest rate concession	B2	Interest concessions	Green box	70.7	57.9
Support to veterinary services	B3	Insemination subsidy	Green box	84.3	30.0
Acreage and cultural landscape scheme - potato	C	Acreage and Cultural Landscape Scheme (Art. 6.5 (a)(i)), National environmental programme, Acreage support to mountain farmers	Green box	11.8	11.8
Subsidy for producing coarse feed	C	Acreage and Cultural Landscape Scheme (Art. 6.5 (a)(i)), National environmental programme	Green box	989.4	992.2
Acreage supp. to mountain farming/coarse feed	C	Acreage and Cultural Landscape Scheme (Art. 6.5 (a)(i)), National environmental programme	Green box	0.0	0.0
Acreage and cultural landscape scheme - grains	C	Acreage and Cultural Landscape Scheme (Art. 6.5 (a)(i)), National environmental programme	Green box	452.1	453.4
Acreage and cultural landscape scheme - fruit and berries	C	Acreage and Cultural Landscape Scheme (Art. 6.5 (a)(i)), National environmental programme	Green box	22.8	22.9
Acreage and cultural landscape scheme - vegetables	C	Acreage and Cultural Landscape Scheme (Art. 6.5 (a)(i)), National environmental programme	Green box	14.9	14.9
Production subsidy for livestock	C	Headage support, animals (Art. 6.5 (a)(iii))	Blue box	2123.0	2119.9
Vacation and temporary substitute scheme	C	Vacation and Replacement Scheme	Green box	1089.6	1089.6
Assistance in case of illness	C	Vacation and Replacement Scheme	Green box	171.8	171.8
Natural disaster payments	C	Natural disaster payment	Green box	35.7	30.0
Organic farming	C	Subsidy to Ecological Production, Fixed Area Support to Ecological Production	Green box	105.3	105.3
Changed soil cultivation	C	Subsidy to producers who refrain from field work on areas exposed to erosion in autumn	Green box	0.0	0.0
Farming in steep areas	C	Subsidy to Production on Steep Areas	Green box	0.0	0.0
Young farmers	C		Not covered	0.0	0.0
Income tax deduction	C		Not covered	881.0	0.0

PSE-name	PSE-category	WTO-name	WTO-box	PSE-value	WTO-value
Support for grazing animals (start 2007)	C	Acreage and Cultural Landscape Scheme (Art. 6.5 (a)(i)), National environmental programme	Green box	458.6	459.9
Regional environmental program (start 2005)	C	Regional environmental programme	Green box	363.9	511.7
Agricultural Development Fund land related programs	C	Particularly valuable agric. landscapes, Various environmental projects	Green box	69.5	13.5
Cultural Landscape Payment	D	Acreage and Cultural Landscape Scheme (Art. 6.5 (a)(i)), National environmental programme, Acreage support to mountain farmers	Green box	1596.2	1600.8
Structural income support for milk production	D	Structural Income Support (Art. 6.5 (a)(ii)) from 2004	Blue box	972.1	0.0
F3. other non-commodity criteria	F		Not covered	5.2	0.0
F2. a specific non-commodity output	F	Subsidy to cultural landscape and extensive land use, Subsidy to producers who refrain from field work on areas exposed to erosion in autumn	Green box	48.1	0.0
Research advisory and training	H	(a) Research, Research programmes, (c) Training services	Green box	861.5	40
Agricultural research stations	H	Development of genetic plant resources, Research institutions, Research and development support scheme to fruit and berries	Green box	105.1	331.9
Support to research and agricultural experimental groups	H	(d) Extension and advisory services, Norwegian Agricultural Extension Service, Registration of environmental and genetic resources, Environmental advisory services, Ecological advisory services, E-tracking	Green box	38.9	115.3
Small-animal fund (Other payments)	H	Small animal fund shared with PIF2	Green box	0	0
Grain and feed stuff market system (Research and development)	H	Grain price support	Green box	0	0
Organic agriculture - inspection research advice market promotion organisation and information	H		Not covered	0	0
Veterinary Services plant and animal diseases.	J	(b) Pest and disease control, Disease control seed potatoes, action plan pesticides, Carcasses destruction	Green box	0	22.3
Norwegian Agricultural Inspection Services	J	(e) Inspection services, Digital mapping	Green box	0	10
Norwegian Food Safety Authority	J	Norwegian Food Safety Authority: food safety and veterinary services	Green box	162.6	281.4
Investment land registration and land allocation	K		Not covered	200.5	0

PSE-name	PSE-category	WTO-name	WTO-box	PSE-value	WTO-value
Early retirement scheme	K	Producer retirement payment	Green box	106.1	0
Purchase of milk quotas	K	Payments to remove resources from marketable agricultural production	Green box	0	106.1
Market regulation Promotion	L	(f) Marketing and promotion services, Research and development support scheme to fruit and berries, Potatoes, fruits and vegetables, organic production, Market regulation, promotion and sale	Green box	18.9	23
Support to production of potato spirit	L		Not covered	20	0
Quality and sales promotion	L	The Norwegian Agricultural Quality System and Food Branding Foundation	Green box	35.0	40
Grain and feed stuff market system (administration)	L	Grain price support	Green box	0	0
Grain and feed stuff market system (storage for food security)	M	Payment to stockholding for food security purposes	Green box	0.1	0.1
Norwegian Agricultural Authority	N	(g) Infrastructural services	Green box	299.8	0
Norwegian county governor	N		Not covered	89.7	0
Tilskudd til raaareprisutjevningssystemet	N	Price Compensation to Processed Agricultural Products	Not covered	197.6	0
Tilskudd til eksportrestitusjon	N		Not covered	3.6	0

Notes:

1. The list comprises all policy measures listed in the PSE-database for which there was a positive monetary amount in at least one year for the period 1995 to 2009.
2. The list does not contain policy measures that are notified to the WTO, but not listed in the PSE-database.
3. A one-to-one correspondence between the PSE-database and the WTO-notifications does not apply for all policy measures. Cases exist in which one policy measure in the PSE-database covers several policy measures in the WTO-notifications. For instance, price support to milk and beef is listed only in PSE-category A2 (output payment), but is notified as both Non-ex DP (base deficiency payments) and blue box (regional deficiency payments). Moreover, price support is listed on a commodity basis in the PSE-database, while only the total value for all meat products is notified to the WTO. In these case, the monetary values have been allocated by the authors.

Annex (cont.) Matching support measures for Switzerland in 2009 by PSE-categories

PSE-name	PSE-category	WTO-name	WTO-box	PSE-value	WTO-value
Beef MPS	A1	Bovine meat	MPS	521.2	785.7
Eggs MPS	A1	Eggs	MPS	113.8	0.0
Maize MPS	A1	Maize	MPS	15.5	21.7
Milk MPS	A1	Milk and dairy products	MPS	582.2	565.9
Other grains MPS	A1	Barley, Oats	MPS	24.7	38.0
Pigmeat MPS	A1	Pig meat	MPS	498.8	671.2
Poultry MPS	A1	Poultry	MPS	109.5	195.8
Rapeseed MPS	A1	Rapeseed	MPS	44.8	3.8
Sugar beets MPS	A1	Sugar beet	MPS	53.8	46.3
Sheepmeat MPS	A1		Not covered	14.6	0.0
Wheat MPS	A1	Wheat	MPS	24.2	85.3
Other MPS	A1	Pulses, Fibre plants, Soybean/Sunflower, Seed potatoes, Other potatoes, Cider apples, Cider pears, Production, Other fruit (apricots), Wine growing, Grapes	MPS	909.6	8.9
Milk Price Supplement for Cheese Production	A2	Allowances for milk processed into cheese, Supplements for the manufacture of hard cheese in the silage area, Premiums for amalgamation in the cheese industry	Green box	247.8	247.8
Payments for Non-Silage Feeding of Cows	A2	Non-silage allowances	Green box	31.9	31.9
Energy Payments	B1		Not covered	65.0	0.0
Seed Payments	B1		Not covered	2.4	0.0
Complementary Direct Payments Base Area Payment (grassland)	B1	Direct additional payments	Green box	0.0	0.0
Payments for Less Intensively Used Meadows for Forage Production	B1	Payments for special ecological services	Green box	7.8	7.0
Payments for Use of Low Quality Potatoes as Animal Feed	B1		Not covered	7.9	0.0
Feed grain price reduction based on import tariff revenues	B1		Not covered	0.0	0.0
Payments for Litter	B1	Payments for special ecological services	Green box	6.9	6.2
Interest concessions	B2	Investment credits (loss of interest on the total credit granted)	Green box	103.6	47.0
Investment aid for farm operations	B2	Assistance to small farms	Green box	9.8	1.8
Extension Services	B3	(d) Extension and advisory services, Dissemination of information (milk), Dissemination of information (arboriculture)	Green box	0.0	0.0
Pest Control	B3	(b) Pest and disease control, Disease and epizootic control	Green box	3.5	4.3
Disease Control	B3	(b) Pest and disease control, Disease and epizootic control	Green box	0.0	4.3

PSE-name	PSE-category	WTO-name	WTO-box	PSE-value	WTO-value
Payments for Extensive Farming Bread Wheat (1992-98)	C	Payments for special ecological services	Green box	0.0	0.0
Payments for Extensive Farming Rapeseed (1992-98)	C	Payments for special ecological services	Green box	0.0	0.0
Payments for the Holding of Cows whose Milk is not Marketed	C	Payments to owners of cows who do not market milk	Green box	0.0	0.0
Payments for Reduction of the Livestock Herd (slaughter cattle payments)	C		Not covered	0.0	0.0
Payments for Wine Cultivation on Steep Slopes	C		Not covered	11.7	0.0
Payments for Oilseeds Cultivation	C	Crop premium for oilseeds (rapeseed and soybean/sunflower)	Non-ex DP	26.0	31.9
Payments for Crop Cultivation	C	Crop premium for fiber plants, Crop premium for pulses, Crop premium for sugar beet	Non-ex DP	0.0	42.3
Acreage Base Premiums for Coarse Grains	C	Crop premium for feed grains	Non-ex DP	0.0	0.0
Payments for Extensive Farming Feed grains	C	Payments for extensive cereal production	Green box	0.0	0.0
Payment for Extensive Cultivation Grains Rapeseed (from 1999)	C	Payments for extensive cereal production	Green box	29.1	0.0
Payments for Integrated Production of Crops (1992-98)	C	Payments for special ecological services	Green box	0.0	0.0
Payments for the Controlled Holding of Animals in Open Air	C	Payments for special ecological services	Green box	0.0	0.0
Payments for Animal Housing Systems	C	Payments for special ecological services	Green box	59.3	53.3
Payments for Regularly Keeping Animals Outdoors	C	Payments for special ecological services	Green box	163.1	146.7
Payments for the Production of Renewable Raw Materials	C	Payments for set aside pasture land and renewable raw materials	Green box	0.2	0.0
Payment for the Holding of Roughage Eating Farm Animals	C	Payments for herding roughage-consuming animals	Green box	509.1	509.6
Payments for the Holding of Livestock in Mountainous Areas	C	Allowances for the costs of cattle owners in mountain and hill areas (also regional assistance)	Green box	0.0	0.0
Payments for the Holding of Livestock in difficult conditions (from 1999)	C	Payments for herding animals under difficult conditions, Allowances for the costs of cattle owners in mountain and hill areas	Green box	352.4	352.5
Payments for Farming on Steep Slopes	C	Payments for farming on steep slopes, Compensatory payments for cultivating fields under difficult conditions	Green box	90.0	102.6
Payments for Green Fallow	C	Payments for special ecological services	Green box	0.0	0.0
Payments for Extensive Farming on Dryland and Litter Areas	C	Payments for special ecological services	Green box	11.0	9.9
Payments for Extensive Meadows on assolated and set-asside land	C	Payments for special ecological services	Green box	0.0	0.0
Payments for Rotation of Fallow Land	C	Payments for special ecological services	Green box	1.4	1.3
Payments for Measures to Protect Water Quality	C	Payments for special ecological services	Green box	6.2	5.6

PSE-name	PSE-category	WTO-name	WTO-box	PSE-value	WTO-value
Complementary Direct Payments Base Area Payment (arable land)	C	Direct additional payments	Green box	0.0	0.0
Payments for Organic Farming of Crops	C	Payments for special ecological services	Green box	27.9	25.1
Payments for Summer Pasturing	D	Payments for summer pasturing	Green box	98.0	98.0
Complementary Direct Payments Base Farm Payment	D	Direct additional payments	Green box	0.0	0.0
Complementary Direct Payments Supplementary Payments	D	Direct additional payments	Green box	0.0	0.0
E. Payments based on non-current A/An/R/I, production not required	E	General direct payments (according to surface area)	Green box	1,225.5	1,225.5
F2. a specific non-commodity output	F	Payments for special ecological services	Green box	161.8	145.5
G. Miscellaneous payments	G	Cantonal spending on agriculture	Green box	178.5	195.1
Recherche	H	(a) Research, Research, training and dissemination of information	Green box	63.3	72.9
Encouragement élevage du bétail	H	Assistance to improve livestock breeding	Green box	34.8	34.8
Encouragement élevage du cheval	H		Not covered	0.0	0.0
Vulgarisation	I	(d) Extension and advisory services, Dissemination of information (milk), Dissemination of information (arboriculture)	Green box	11.1	3.4
Construction nouvelles et complémentaires destinées au l'enseignements agricoles	I		Not covered	0.0	0.0
Formation professionnelle agricole sans Hautes Ecoles Spécialisées	I		Not covered	9.0	0.0
Inspection (Lait)	J	(e) Inspection services: quality control of milk etc, Milk quality control, Fruit and juice control, Grape harvest control	Green box	3.9	29.4
Fonds viande	J	(e) Inspection services: quality control of milk etc, Milk quality control, Fruit and juice control, Grape harvest control	Green box	6.2	46.8
Contrôle de la vendange	J	(e) Inspection services: quality control of milk etc, Milk quality control, Fruit and juice control, Grape harvest control	Green box	0.8	6.0
Amélioration des structures des fromageries artisanales	K		Not covered	0.0	0.0
Autre amélioration foncière et constructions rurales	K	Agricultural structural adjustment	Green box	82.8	0.0

PSE-name	PSE-category	WTO-name	WTO-box	PSE-value	WTO-value
Publicité (jusqu'au 1999 autres mesures de promotion) pour autres que fromages et vins et prod. Viticoles	L	(f) Marketing and promotion services: sales promotion, Marketing services: Advertising to promote milk and dairy products, Marketing services: Advertising and research to promote potatoes, Marketing services: Advertising and research to promote fruit and juice, Marketing services: Promotion of the sale of wines and wine products, Marketing services: Advertising to promote rapeseed oil, Marketing services: Advertising to promote the sale of other agricultural products	Green box	33.0	32.4
Publicité pour fromages (jusqu'au 1999 intégré dans placement du fromage)	L	(f) Marketing and promotion services: sales promotion, Marketing services: Advertising to promote milk and dairy products, Marketing services: Advertising and research to promote potatoes, Marketing services: Advertising and research to promote fruit and juice, Marketing services: Promotion of the sale of wines and wine products, Marketing services: Advertising to promote rapeseed oil, Marketing services: Advertising to promote the sale of other agricultural products	Green box	21.0	20.6
Publicité pour les vins et les produits viticoles au l'étranger (jusqu'au 1997 y compris promotion de raisin et jus de raisin)	L	(f) Marketing and promotion services: sales promotion, Marketing services: Advertising to promote milk and dairy products, Marketing services: Advertising and research to promote potatoes, Marketing services: Advertising and research to promote fruit and juice, Marketing services: Promotion of the sale of wines and wine products, Marketing services: Advertising to promote rapeseed oil, Marketing services: Advertising to promote the sale of other agricultural products	Green box	1.0	1.0
Contributions au la vente de raisin et jus de raisin	L		Not covered	0.0	0.0
Dépense pour liquidation BUTYRA et Union Suisse de Fromage	L		Not covered	0.0	0.0
Contribution frais de stockage (blé)	M		Not covered	25.5	0.0
Contribution frais de stockage (cereales fourragères)	M		Not covered	0.0	0.0

PSE-name	PSE-category	WTO-name	WTO-box	PSE-value	WTO-value
Contribution frais de stockage (riz)	M		Not covered	2.0	0.0
Contribution frais de stockage (gras et huile)	M		Not covered	5.4	0.0
Contribution frais de stockage (sucre)	M		Not covered	4.2	0.0
Contributions frais de stockage (stock de pommes de terre)	M	Guarantee stocks (potatoes)	Green box	0.0	0.0
Contributions frais de stockage (concentrés de jus de pommes) (1) 01.07.96 - 31.12.97	M	Guarantee stocks (apple juice concentrate)	Green box	1.8	1.4
Dépenses des cantons (administration vulgarisation améliorations foncières et constructions rurales garde des animaux mesures sanitaires et sociales) en faveur d'agriculture	N	Cantonal spending on agriculture	Green box	155.0	169.4
Dépenses des communes en faveur d'agriculture	N	Cantonal spending on agriculture	Green box	20.0	21.9

Notes:

1. The list comprises all policy measures listed in the PSE-database for which there was a positive monetary amount in at least one year for the period 1995 to 2009.
2. The list does not contain policy measures that are notified to the WTO, but not listed in the PSE-database.
3. A one-to-one correspondence between the PSE-database and the WTO-notifications does not apply for all policy measures. Cases exist in which one policy measure in the WTO-notifications covers several policy measures in the PSE-database. For instance, the payments for special ecological services notified in the green box, are split up in various single measures in the PSE-database.

Annex (cont.) Matching support measures for the EU in 2007 by PSE-categories

PSE-name	PSE-cat.	WTO-name	WTO-box	PSE-value	WTO-value
Maize	A1	Maize	MPS	2192.8	450.2
Barley	A1	Barley	MPS	0.0	1948.2
Rice	A1	Rice	MPS	32.7	0.0
Sugar	A1	White sugar	MPS	1718.2	3462.9
Milk	A1	Skimmed milk powder, Butter	MPS	1891.1	3718.3
Oats	A1	Oats	MPS	0.0	0.0
Beef and veal	A1	Beef	MPS	8595.5	0.0
Common wheat	A1	Common wheat	MPS	0.0	1649.3
Durum wheat	A1	Durum wheat	MPS	73.4	0.0
Tomatoes	A1	Tomatoes	MPS	925.9	0.0
Wine	A1	Wine	MPS	138.5	0.0
Other commodities	A1	Rye, Sorghum, Triticale, Olive oil, Apples, Pears, Apricots, Cherries, Peaches/nectarines, Table grapes, Plums, Lemons, Clementines, Mandarins, Satsumas, Oranges, Cucumbers, Courgettes, Artichokes, Ethyl alcohol of agricultural origin, Seed for sowing, Cotton, Hemp, Flax fibre, Silkworms, Hops	MPS	7877.9	383.1
Sheepmeat	A1		Not covered	1068.4	0.0
Pigmeat	A1		Not covered	-578.8	0.0
Poultrymeat	A1		Not covered	4623.6	0.0
Eggs	A1		Not covered	-62.6	0.0
Plants and flowers	A1		Not covered	439.3	0.0
Potatoes	A1		Not covered	1126.6	0.0
Production aid for dried peas and field beans	A2	Hectare aid chick-peas, lentils and vetches	Non-ex DP	0.0	0.0
Production aid for fibre flax	A2	Processing aid fibre flax and hemp	Non-ex DP	0.0	0.0
Production aid for hemp	A2	Processing aid fibre flax and hemp	Non-ex DP	0.0	0.0
Seed payments Common Wheat	A2	Aid for seeds	Blue box	0.1	0.1
Seed payments Durum Wheat	A2	Aid for seeds	Blue box	0.0	0.0
Seed payments Barley	A2	Aid for seeds	Blue box	0.1	0.0
Seed payments Oats	A2	Aid for seeds	Blue box	0.0	0.0
Seed payments Maize	A2	Aid for seeds	Blue box	0.0	0.0
Seed payments Rice	A2	Aid for seeds	Blue box	9.4	5.2
Seed payments Soyabean	A2	Aid for seeds	Blue box	0.1	0.0
Seed payments Sunflower	A2	Aid for seeds	Blue box	0.7	0.4
Seed payments Rapeseed	A2	Aid for seeds	Blue box	2.2	1.2
Seed payments Others	A2	Aid for seeds	Blue box	7.4	4.1
Payment for starch potatoes	A2	Premiums and production refunds for potato starch	Non-ex DP	103.5	121.3
Payments for olive oil	A2	Aid to olive groves	Blue box	0.0	0.0
Production aid for silkworms	A2	Production aid for silkworms	Non-ex DP	0.5	0.5

PSE-name	PSE-cat.	WTO-name	WTO-box	PSE-value	WTO-value
Premiums for tobacco from 1992	A2	Premium for tobacco	Non-ex DP	301.4	385.9
Conversion premium (tobacco)	A2	Premium for tobacco	Non-ex DP	0.0	0.0
Payments per tonne for on farm stockholding of honey	A2	Public stockholding	Green box	1.2	0.2
Production aid for ananas in Azores	A2	(k) Regional assistance programmes	Green box	1.9	2.0
Production aid for bananas	A2	Aid for bananas	Blue box	276.6	277.4
National output payments for wheat	A2	Aid for wheat, maize, barley, rye, triticale, grain sorghum incl skim milk powder	Non-ex DP	0.0	0.0
National output payments for maize	A2	Aid for wheat, maize, barley, rye, triticale, grain sorghum incl skim milk powder	Non-ex DP	0.0	0.0
National subsidies for sugar beet for processing	A2	Production refund for sugar used in the chemical industry	Non-ex DP	0.0	0.4
National subsidies to soybeans	A2		Not covered	0.0	0.0
National output payments for potatoes (incl. seed)	A2		Not covered	0.1	0.0
National output payments for wine	A2	Privat storage aid, distillation, aids for specific uses wine	Non-ex DP	1.2	608.0
National production aid for olive oil	A2	Aid to olive groves	Blue box	0.0	0.0
National output payments for other crop products	A2	Aid for wheat, maize, barley, rye, triticale, grain sorghum incl skim milk powder	Non-ex DP	3.9	0.0
National output payments for other livestock products	A2		Not covered	0.1	0.0
Dairy premium	A2	Dairy payments to milk producers	Blue box	0.2	2.7
Supplement to dairy premium	A2	Dairy payments to milk producers	Blue box	0.1	0.8
Dairy premium in remote regions	A2	(k) Regional assistance programmes	Green box	0.0	0.0
Dairy premium national expenditures	A2	National aid milk	Non-ex DP	33.6	26.4
Dairy premium supplements national expenditures	A2	National aid milk	Non-ex DP	5.6	4.4
Other national output payments for milk	A2	National aid milk	Non-ex DP	179.8	141.3
Non-marketing and conversion dairy premiums	A2	Dairy payments to milk producers	Blue box	0.0	0.0
Compensation for temporary suspension of quotas	A2		Not covered	0.0	0.0
Compensation for non-allocation of milk quotas (temporary)	A2		Not covered	0.0	0.0
Production aid for milk in remote regions	A2		Not covered	0.0	0.0
Payments per tonne for on farm stockholding of local cheese	A2	Public stockholding	Green box	0.2	0.0
National output payments for beef	A2		Not covered	0.0	0.0

PSE-name	PSE-cat.	WTO-name	WTO-box	PSE-value	WTO-value
National output payments for pigmeat	A2		Not covered	2.8	0.0
National output payments for poultry meat	A2		Not covered	0.7	0.0
National output payments for eggs	A2		Not covered	2.0	0.0
National output payments for sheep meat	A2		Not covered	0.1	0.0
National output payments for wool	A2		Not covered	0.0	0.0
Production aid for dried fodder from 1995	B1	Production aid dried fodder	Non-ex DP	136.1	139.5
Agri-monetary (Labour insurance 35%) Common wheat	B1	(d) Decoupled income support	Green box	-6.3	-6.8
Agri-monetary (Labour insurance 35%) Non-PSE	B1	(d) Decoupled income support	Green box	0	-6.3
Payments to purchase breeding animals national expenditures	B1	(i) Structural adjustment assistance provided through investment aids	Green box	81.3	169.1
Payments to purchase seeds national expenditures	B1	Aid for seeds	Blue box	14.3	7.9
Agri-environmental programmes RDR expenditures	B1	(j) Environmental protection	Green box	0.0	0.0
Agri-environmental programmes national expenditures	B1	(j) Environmental protection	Green box	0.0	0.0
Annual soil improvement subsidies (liming/erosion control)	B1	(i) Structural adjustment assistance provided through	Green box	3.3	6.8
Insurance subsidies (crops) national expenditures	B1	Insurance subsidies	Non-ex DP	80.5	54.9
Insurance subsidies (livestock) national expenditures	B1	Insurance subsidies	Non-ex DP	0.8	0.6
Insurance subsidies (all com.) national expenditures	B1	Insurance subsidies	Non-ex DP	580.2	395.8
Pesticides subsidies national expenditures	B1	Pest and disease control (ii)	Green box	3.0	3.5
Transport subsidies (crops and forage) national expenditures	B1		Not covered	0.0	0.0
Transport subsidies (livestock) national expenditures	B1		Not covered	0.0	0.0
Transport subsidies (all commodities) national expenditures	B1		Not covered	0.9	0.0
Compensation for losses due to natural disaster input purchase national expenditures	B1	(f) Natural disaster relief payments	Green box	3.2	2.3
Credit payments for the purchase of variable inputs national expenditures	B1	(i) Structural adjustment assistance provided through investment aids	Green box	58.5	121.7
Subsidy for the collaborative use of agricultural machinery national expenditures	B1	(i) Structural adjustment assistance provided through investment aids	Green box	0.0	0.1

PSE-name	PSE-cat.	WTO-name	WTO-box	PSE-value	WTO-value
Investments in agricultural holdings/farm modernisation	B2	(i) Structural adjustment assistance provided through investment aids	Green box	236.8	492.6
(Guidance) Farm modernisation	B2	(i) Structural adjustment assistance provided through investment aids	Green box	0.0	0.0
(Guidance) Investment in agricultural holdings	B2	(i) Structural adjustment assistance provided through investment aids	Green box	990.4	2059.9
Investment in agricultural holdings National expenditures	B2	(i) Structural adjustment assistance provided through investment aids	Green box	1332.0	2770.4
Setting-up of young farmers (Guarantee/EAFRD)	B2	(i) Structural adjustment assistance provided through investment aids	Green box	100.8	209.6
(Guidance) Setting-up of young farmers	B2	(i) Structural adjustment assistance provided through investment aids	Green box	0.0	0.0
Setting-up of young farmers National expenditures	B2	(i) Structural adjustment assistance provided through investment aids	Green box	211.6	440.1
Investment assistance in mountainous areas and LFAs national expenditures	B2	(i) Structural adjustment assistance provided through investment aids	Green box	5.2	10.9
Other capital grants national expenditures	B2	(i) Structural adjustment assistance provided through investment aids	Green box	22.7	47.2
Other interest concessions national expenditures	B2	Interest concessions	Non-ex DP	477.2	190.5
Debt rescheduling/write off national expenditures	B2	(i) Structural adjustment assistance provided through investment aids	Green box	26.6	55.4
Investments in the dairy sector (incl. restructuring) national expenditures	B2	(i) Structural adjustment assistance provided through investment aids	Green box	4.6	9.6
Investments in the pigmeat sector national expenditures	B2	(i) Structural adjustment assistance provided through investment aids	Green box	0.3	0.6
Investments in the poultry sector national expenditures	B2	(i) Structural adjustment assistance provided through investment aids	Green box	0.8	1.7
Investments in the egg sector national expenditures	B2	(i) Structural adjustment assistance provided through investment aids	Green box	0.3	0.6
Restructuring and conversion of vineyards	B2	(i) Structural adjustment assistance provided through investment aids	Green box	186.9	388.6

PSE-name	PSE-cat.	WTO-name	WTO-box	PSE-value	WTO-value
(Guidance) Improvement of agricultural structure (vineyards) (Greece)	B2	(i) Structural adjustment assistance provided through investment aids	Green box	0.0	0.0
Investments in vineyards orchards hops gardens national expenditures	B2	(i) Structural adjustment assistance provided through investment aids	Green box	6.2	12.9
Vineyard restructuring national expenditures	B2	(i) Structural adjustment assistance provided through investment aids	Green box	17.9	37.1
Restructuring in the fruits and vegetables sector	B2	(i) Structural adjustment assistance provided through investment aids	Green box	0.0	0.0
Restoring agricultural production potential damaged by natural disasters and introducing appropriate prevention actions	B2	(f) Natural disaster relief payments	Green box	10.6	7.5
Input supplying in the livestock sector of most remote regions	B2	(k) Regional assistance programmes	Green box	47.4	51.5
Input supplying in the crop sector of most remote regions	B2	(k) Regional assistance programmes	Green box	53.1	57.7
Complementary measures for the improvement of agricultural structures in Greece and Portugal	B2	(i) Structural adjustment assistance provided through investment aids	Green box	0.0	0.0
Other long term land improvement national expenditures	B2	(i) Structural adjustment assistance provided through investment aids	Green box	50.3	104.6
Restoring agricultural production potential damaged by natural disasters and introducing appropriate prevention instruments national expenditures	B2	(f) Natural disaster relief payments	Green box	474.5	336.2
Other national expenditures on fixed capital formation national expenditures	B2	(i) Structural adjustment assistance provided through investment aids	Green box	18.2	37.8
Per hectare payment against phyloxera	B3	Pest and disease control (ii)	Green box	0.0	0.0
Disease eradication	B3	Pest and disease control (ii)	Green box	204.0	233.1
Other veterinary measures	B3	Pest and disease control (ii)	Green box	14.0	16.1
Plant health measures	B3	Pest and disease control (ii)	Green box	0.0	0.0
Measures for most remote regions	B3	(k) Regional assistance programmes	Green box	0.0	0.0
Funds for emergency veterinary measures	B3	Pest and disease control (ii)	Green box	9.5	10.8
Phytosanitary interventions	B3	Pest and disease control (ii)	Green box	1.5	1.7
Food and feed security measures	B3	Pest and disease control (ii)	Green box	16.9	19.4
Completion of earlier veterinary and plant health measures	B3	Pest and disease control (ii)	Green box	0.0	0.0

PSE-name	PSE-cat.	WTO-name	WTO-box	PSE-value	WTO-value
Measures to control epizootic diseases	B3	Pest and disease control (ii)	Green box	0.0	0.0
Pest control national expenditures	B3	Pest and disease control (ii)	Green box	26.0	29.7
Disease control national expenditures	B3	Pest and disease control (ii)	Green box	420.4	480.5
Pest and disease control national expenditures	B3	Pest and disease control (ii)	Green box	377.0	430.9
Premiums for the slaughter of adult cattle other than cows (mainly UK)	B3	Slaughter premium within nationally fixed maximum number of head (calves and adults)	Blue box	0.0	0.0
Programme for obligatory slaughter	B3	Slaughter premium within nationally fixed maximum number of head (calves and adults)	Blue box	0.0	0.0
Exceptional support measures for beef and veal	B3	Exceptional support measures beef	Non-ex DP	14.1	14.1
Exceptional support measures for pigmeat	B3	Exceptional support measures pigmeat	Non-ex DP	0.0	0.0
National premiums for the slaughter of cattle (disease eradication)	B3	Pest and disease control (ii)	Green box	1.8	2.1
National premiums for the slaughter of sheep (disease eradication)	B3	Pest and disease control (ii)	Green box	0.8	0.9
National premiums for the slaughter of pigs (disease eradication)	B3	Pest and disease control (ii)	Green box	13.3	15.2
National premiums for the slaughter of poultry (disease eradication)	B3	Pest and disease control (ii)	Green box	7.9	9.0
(Guidance) Extension (Greece)	B3	Extension and advisory services	Green box	0.0	0.0
(Guidance) Advisory services (Italy)	B3	Extension and advisory services (iv)	Green box	0.0	0.0
Use of farm and forestry advisory services	B3	Extension and advisory services (iv)	Green box	1.1	3.5
Technical assistance/extension national expenditures	B3	Extension and advisory services (iv)	Green box	320.6	1057.9
Seed service national expenditures	B3	Aid for seeds	Blue box	1.0	0.6
Setting-up of farm relief and farm management services national expenditures	B3	Other farm services (viii)	Green box	91.8	198.4
Land restructuring (reparcelling) national expenditures	B3	(i) Structural adjustment assistance provided through investment aids	Green box	63.5	132.1
Environmental extension RDR expenditures	B3	Extension and advisory services (iv)	Green box	6.0	19.9

PSE-name	PSE-cat.	WTO-name	WTO-box	PSE-value	WTO- value
Environmental extension national expenditures	B3	Extension and advisory services (iv)	Green box	9.4	30.9
Supplementary aid for durum wheat	C	Quality premium and supplements to per hectare compensatory payments to durum wheat	Blue box	0.0	0.0
Aid to durum wheat	C	Quality premium and	Blue box	46.1	46.6
Quality premium for durum wheat	C	Quality premium and supplements to per hectare compensatory payments to durum wheat	Blue box	79.2	80.0
Per hectare payment for maize	C	Aid for wheat, maize, barley, rye, triticale, grain sorghum incl skim milk powder	Non-ex DP	0.0	0.0
Payments for rice	C	Per hectare compensatory payments for producers of rice	Blue box	168.1	168.8
Area payments for common wheat (incl. top-ups) national expenditures	C	Per hectare compensatory payments to producers of cereals, oilseeds, protein crops, grass silage, set aside	Blue box	0.0	0.0
Area payments for durum wheat (incl. top-ups) national expenditures	C	Quality premium and supplements to per hectare compensatory payments to durum wheat	Blue box	0.4	0.4
Other agri-environmental payments to all land national expenditures	C	(j) Environmental protection	Green box	47.2	65.8
Payments for nitrate reduction Sugar RDR expenditures	C	(j) Environmental protection	Green box	0.3	0.4
Payments for nitrate reduction other commodities RDR expenditures	C	(j) Environmental protection	Green box	4.7	6.6
Payments for nitrate reduction Maize national expenditures	C	(j) Environmental protection	Green box	0.4	0.6
Payments for nitrate reduction Sugar national expenditures	C	(j) Environmental protection	Green box	0.4	0.6
Payments for nitrate reduction other commodities national expenditures	C	(j) Environmental protection	Green box	7.3	10.2
Per hectare payments for non-textile flax seed other	C	Aid for seeds	Blue box	0.0	0.0
Payments for hops	C	Per hectare aid to hops production	Blue box	2.5	2.2
Payments for hops (incl. top-up and restructuring) national expenditures	C	Per hectare aid to hops production	Blue box	1.5	1.3
Payments for the sugar industry in most remote regions	C	(i) Structural adjustment assistance provided through investment aids	Green box	0.3	0.7
Area payments for sugar (incl. top-ups) national expenditures	C	(d) Decoupled income support	Green box	105.0	112.4

PSE-name	PSE-cat.	WTO-name	WTO-box	PSE-value	WTO-value
Area payments for sugar	C	(d) Decoupled income support	Green box	25.2	26.9
Payments for potatoes	C	(k) Regional assistance programmes	Green box	2.5	2.7
Area payments for potatoes (incl. top-up) national expenditures	C	Payments in virtue of Art 69 of R 1782/03, Payments in virtue of Art 69 of R 1782/03	Blue box	11.1	10.5
Vineyard restructuring	C	(i) Structural adjustment assistance provided through investment aids	Green box	223.9	465.7
(Guidance) Premium for the conversion of vineyards	C	(i) Structural adjustment assistance provided through investment aids	Green box	0.0	0.0
(Guidance) Vineyard restructuring	C	(i) Structural adjustment assistance provided through investment aids	Green box	0.0	0.0
Payments for wine in most remote regions	C	(i) Structural adjustment assistance provided through investment aids	Green box	1.7	3.5
Per hectare payments for raisins	C	Area payments for grapes	Non-ex DP	111.9	112.0
Area payments for wine national expenditures	C	Payments in virtue of Art 69 of R 1782/03	Blue box	0.0	0.0
Payments for integrated production of wine RDR expenditures	C	(j) Environmental protection	Green box	5.5	7.6
Payments for integrated production of wine national expenditures	C	(j) Environmental protection	Green box	8.5	11.9
Vineyard improvement/restructuring national expenditures	C	(i) Structural adjustment assistance provided through investment aids	Green box	7.0	14.5
Payments for olives in the smaller Aegean islands	C	Aid to olive groves	Blue box	10.2	8.9
(Guidance) Frost olive groves	C	Aid to olive groves	Blue box	0.0	0.0
Payment per ha of olive groves EU expenditures	C	Aid to olive groves	Blue box	99.4	86.3
Payment per ha of olive groves national expenditures	C	Aid to olive groves	Blue box	11.1	9.6
Area payment for nuts	C	Payments in virtue of Art 69 of R 1782/03	Blue box	86.5	81.6
Area payment for nuts national expenditures	C	Payments in virtue of Art 69 of R 1782/03	Blue box	7.6	7.2
Payment per ha of cotton	C	Cotton	Blue box	247.5	247.5
Suckler cow premiums from 1992	C	Payments to producers keeping suckler cows	Blue box	1205.6	1125.4
Suckler cow premium in most remote regions	C	(k) Regional assistance programmes	Green box	25.9	28.1

PSE-name	PSE-cat.	WTO-name	WTO-box	PSE-value	WTO-value
Special beef/cow premiums from 1992	C	Special premium for producers holding male bovine animals, within regional ceilings under a reference year (beef special premium)	Blue box	90.5	65.1
Beef payment in most remote regions	C	(k) Regional assistance programmes	Green box	0.5	0.6
Deseasonalisation premium	C	(j) Environmental protection	Green box	0.0	0.0
Extensification cow premium	C	(j) Environmental protection	Green box	0.0	0.0
Additional payments for suckler cows	C	Payments to producers keeping suckler cows	Blue box	0.0	0.0
Slaughter premium	C	Slaughter premium within nationally fixed maximum number of head (calves and adults)	Blue box	345.1	255.5
Slaughter premia in remote regions	C	Slaughter premium within nationally fixed maximum number of head (calves and adults)	Blue box	1.9	1.4
Early slaughter of calves (Early marketing premium)	C	Slaughter premium within nationally fixed maximum number of head (calves and adults)	Blue box	0.0	0.0
(Guidance) Beef premium	C	Special premium for producers holding male bovine animals, within regional ceilings under a reference year (beef special premium)	Blue box	0.0	0.0
Ewe and goat premiums from 1992	C	Compensatory payments for ewes and goats	Blue box	239.9	403.8
Fixed premium for ewe and goat in LFAs before 1992	C	(k) Regional assistance programmes	Green box	0.0	0.0
Fixed premium for ewe and goat in LFAs from 1992	C	(k) Regional assistance programmes	Green box	74.0	80.4
Slaughter premiums for sheepmeat	C	Slaughter premium within nationally fixed maximum number of head (calves and adults)	Blue box	0.0	0.0
Dairy cow premium (NMS) national expenditures	C	Dairy payments to milk producers	Blue box	78.2	3.5
Suckler cow premiums (incl. top-ups) no limits national expenditures	C	Payments to producers keeping suckler cows	Blue box	20.4	19.0
Suckler cow premiums (limits) national expenditures	C	Payments to producers keeping suckler cows	Blue box	107.0	99.9
Special beef premiums (incl. top-ups) national expenditures	C	Special premium for producers holding male bovine animals	Blue box	58.0	41.7
Beef extensification premium national expenditures	C	Special premium for producers holding male bovine animals	Blue box	5.2	3.7
Beef and calves slaughter premium national expenditures	C	Slaughter premium within nationally fixed maximum	Blue box	122.3	90.6
Cattle premiums in LFAs national expenditures	C	(k) Regional assistance programmes	Green box	0.0	0.0

PSE-name	PSE-cat.	WTO-name	WTO-box	PSE-value	WTO-value
Ewe and goat premiums (incl. top-ups) national expenditures	C	(k) Regional assistance programmes	Green box	59.8	65.0
Ewe and goat premiums in LFAs national expenditures	C	(k) Regional assistance programmes	Green box	0.0	0.0
Slaughter premiums for sheepmeat national expenditures	C	Slaughter premium within nationally fixed maximum number of head (calves and adults)	Blue box	0.0	0.0
Other national payments for single crops national expenditures	C	(d) Decoupled income support	Green box	40.3	43.1
Other national payments for single livestock national expenditures	C	(d) Decoupled income support	Green box	22.0	23.6
Per hectare payment to all crops	C	Per hectare compensatory payments to producers of cereals, oilseeds, protein crops, grass silage, set aside	Blue box	1432.2	1565.6
POSEI- area payments for COP	C	(k) Regional assistance programmes	Green box	1.8	2.0
Per hectare payment for cereals	C	Per hectare compensatory payments to producers of cereals, oilseeds, protein crops, grass silage, set aside	Blue box	0.0	0.0
Grass silage payments after 2000	C	Per hectare compensatory payments to producers of cereals, oilseeds, protein crops, grass silage, set aside	Blue box	0.0	0.0
Other measures for cereals	C	Per hectare compensatory payments to producers of cereals, oilseeds, protein crops, grass silage, set aside	Blue box	0.0	0.0
Area payments for arable crops (incl. top-ups) national expenditures	C	(k) Regional assistance programmes	Green box	590.4	641.1
Area payments for cereals (top-ups) national expenditures	C	Per hectare compensatory payments to producers of cereals, oilseeds, protein crops, grass silage, set aside	Blue box	0.0	0.0
Area payments for cereals after 1992 (with set-aside) national expenditures	C	Per hectare compensatory payments to producers of cereals, oilseeds, protein crops, grass silage, set aside	Blue box	0.0	0.0
Set aside related to per hectare aid national expenditures	C	Per hectare compensatory payments to producers of cereals, oilseeds, protein crops, grass silage, set aside	Blue box	0.1	0.1
Payments for seed production national expenditures	C	Aid for seeds	Blue box	1.4	0.8
Per hectare payments for oilseeds	C	Per hectare compensatory payments to producers of cereals, oilseeds, protein crops, grass silage, set aside	Blue box	0.0	0.0

PSE-name	PSE-cat.	WTO-name	WTO-box	PSE-value	WTO-value
Per hectare payments for peas beans and lupins	C	Per hectare compensatory payments to producers of cereals, oilseeds, protein crops, grass silage, set aside	Blue box	0.0	0.0
Payment for protein crops	C	Protein crop premium	Blue box	42.6	42.6
Area payments for protein crops (incl. top-ups) national expenditures	C	Protein crop premium	Blue box	0.0	0.0
Regional payment for crops (drying aid)	C	Per hectare compensatory payments to producers of cereals, oilseeds, protein crops, grass silage, set aside	Blue box	0.0	0.0
Payment for energy crops	C	Per hectare aid for energy crops	Blue box	72.1	71.9
Area aid - energy crops national expenditures	C	Per hectare aid for energy crops	Blue box	0.2	0.2
Set aside related to per hectare aid	C	Per hectare compensatory payments to producers of cereals, oilseeds, protein crops, grass silage, set aside	Blue box	0.0	0.0
Five-year set-aside	C	Per hectare compensatory payments to producers of cereals, oilseeds, protein crops, grass silage, set aside	Blue box	0.0	0.0
Measures to improve fruits and vegetable production	C	Payments in virtue of Art 69 of R 1782/03	Blue box	0.0	0.0
Transitional fruit and veg payment-tomatoes	C	Payments in virtue of Art 69 of R 1782/03	Blue box	0.0	0.0
Transitional fruit and veg payment- other products than tomatoes	C	Payments in virtue of Art 69 of R 1782/03	Blue box	0.0	0.0
Transitional soft fruit payment	C	Payments in virtue of Art 69 of R 1782/03	Blue box	0.0	0.0
Payments to fruits and vegetables in remote regions	C	(k) Regional assistance programmes	Green box	0.0	0.0
Compensatory allowances/less-favoured area payments for livestock (often before 2000) guidance	C	(k) Regional assistance programmes	Green box	0.0	0.0
Less-favoured area payments without limits payments per head national expenditures	C	(k) Regional assistance programmes	Green box	5.1	5.5
Less-favoured area payments without limits payments per ha national expenditures	C	(k) Regional assistance programmes	Green box	0.0	0.0
Less-favoured area payments payments per ha of extensive grassland EU expenditures	C	(k) Regional assistance programmes	Green box	45.0	48.9
Less-favoured area payments payments per ha of extensive grassland National expenditures	C	(k) Regional assistance programmes	Green box	59.4	64.5

PSE-name	PSE-cat.	WTO-name	WTO-box	PSE-value	WTO-value
Orchard improvement national expenditures	C	(i) Structural adjustment assistance provided through investment aids	Green box	0.0	0.0
Payments for fruits and vegetables (integrated production system) national expenditures	C	(j) Environmental protection	Green box	19.7	27.5
Extensive management of grassland RDR expenditures	C	(j) Environmental protection	Green box	150.3	209.7
Extensive management of grassland national expenditures	C	(j) Environmental protection	Green box	233.9	326.3
Restoration of permanent pastures RDR expenditures	C	(j) Environmental protection	Green box	1.8	2.5
Restoration of permanent pastures national expenditures	C	(j) Environmental protection	Green box	0.0	0.0
Conversion of arable land into pastures RDR expenditures	C	(j) Environmental protection	Green box	2.6	3.6
Conversion of arable land into pastures national expenditures	C	(j) Environmental protection	Green box	4.0	5.5
Payments to organic crop farming RDR expenditures	C	(j) Environmental protection	Green box	34.6	48.3
Payments to organic crop farming national expenditures	C	(j) Environmental protection	Green box	53.9	75.2
Extensive management of arable land RDR expenditures	C	(j) Environmental protection	Green box	7.9	11.0
Extensive management of arable land national expenditures	C	(j) Environmental protection	Green box	12.2	17.1
Winter cover on arable land RDR expenditures	C	(j) Environmental protection	Green box	64.1	89.5
Winter cover on arable land national expenditures	C	(j) Environmental protection	Green box	99.8	139.3
Crop rotation RDR expenditures	C	(j) Environmental protection	Green box	14.2	19.8
Crop rotation national expenditures	C	(j) Environmental protection	Green box	22.1	30.8
Sustainable animal breeding RDR expenditures	C	(j) Environmental protection	Green box	1.8	2.5
Sustainable animal breeding national expenditures	C	(j) Environmental protection	Green box	2.7	3.8
Animal welfare payments RDR	C	(j) Environmental protection	Green box	29.2	40.7
Animal welfare payments national expenditures	C	(j) Environmental protection	Green box	6.3	8.8
Other livestock payments	C	(j) Environmental protection	Green box	0.0	0.0
Other agri-environmental payments to groups RDR expenditures	C	(j) Environmental protection	Green box	34.1	47.6
Other agri-environmental payments to groups national expenditures	C	(j) Environmental protection	Green box	53.1	74.1

PSE-name	PSE-cat.	WTO-name	WTO-box	PSE-value	WTO-value
Direct aids for specific types of farming and quality production	C	Payments in virtue of Art 69 of R 1782/03	Blue box	422.9	398.8
Disaster payments per ha of crop commodity groups national expenditures	C	(f) Natural disaster relief payments	Green box	168.2	119.2
Disaster payments per head of livestock commodity groups	C	(f) Natural disaster relief payments	Green box	0.5	0.3
Disaster payments - national based on losses in crop receipts national expenditures	C	(f) Natural disaster relief payments	Green box	9.3	6.6
Disaster payments - national based on losses in livestock receipts national expenditures	C	(f) Natural disaster relief payments	Green box	0.0	0.0
Compensation for emergency veterinary measures national expenditures	C	Pest and disease control (ii)	Green box	0.0	0.0
Payments for ruminants (top-up from 2005) national expenditures	C	(k) Regional assistance programmes	Green box	138.4	150.3
Premium for keeping farm animals national expenditures	C	(j) Environmental protection	Green box	0.0	0.0
Northern aid in Finland area payments for arable crops	C	(k) Regional assistance programmes	Green box	41.9	45.5
Northern and southern aid in Finland aid/unit of livestock	C	(k) Regional assistance programmes	Green box	147.5	160.2
Other national aid/supplement to LFA in Finland	C	(k) Regional assistance programmes	Green box	120.3	130.6
National aid for crop production/supplement to AE in Finland	C	(k) Regional assistance programmes	Green box	14.4	15.6
National support to Northern Sweden	C	(k) Regional assistance programmes	Green box	28.4	30.8
Other national crop payments	C	(k) Regional assistance programmes	Green box	1.5	1.6
Other national livestock payments	C	(k) Regional assistance programmes	Green box	0.0	0.0
Less-favoured area payments from 2000 RDR expenditures	C	(k) Regional assistance programmes	Green box	1124.5	1221.0
(Guidance) Compensatory allowances/less-favoured area	C	(k) Regional assistance programmes	Green box	0.0	0.0
Compensatory allowances/less-favoured area payments from 2000 national expenditures	C	(k) Regional assistance programmes	Green box	1522.8	1653.5
Additional aid (modulation floor)	C	(d) Decoupled income support	Green box	90.7	97.1
Transitional aid in Finland (1995-1999) national expenditures	C	(k) Regional assistance programmes	Green box	0.0	0.0
Disaster payments per ha to all commodities national expenditures	C	(f) Natural disaster relief payments	Green box	321.6	227.8

PSE-name	PSE-cat.	WTO-name	WTO-box	PSE-value	WTO-value
Disaster payments based on losses in receipts of all commodities	C	(f) Natural disaster relief payments	Green box	378.7	268.3
Extensive management of all land RDR expenditures	C	(j) Environmental protection	Green box	113.7	158.6
Extensive management of all land national expenditures	C	(j) Environmental protection	Green box	176.8	246.8
Organic farming RDR expenditures	C	(j) Environmental protection	Green box	96.9	135.3
Organic farming national expenditures	C	(j) Environmental protection	Green box	150.8	210.4
Maintenance of protected/environmentally sensitive areas RDR expenditures	C	(j) Environmental protection	Green box	57.0	79.5
Maintenance of protected/environmentally sensitive areas national expenditures	C	(j) Environmental protection	Green box	77.2	107.8
Environmentally friendly production RDR expenditures	C	(j) Environmental protection	Green box	914.2	1275.6
Environmentally friendly production national expenditures	C	(j) Environmental protection	Green box	1422.3	1984.7
Integrated farming RDR expenditures	C	(j) Environmental protection	Green box	12.3	17.1
Integrated farming national expenditures	C	(j) Environmental protection	Green box	19.1	26.6
Other agri-environmental payments to all land RDR expenditures	C	(j) Environmental protection	Green box	30.3	42.3
Other agri-environmental payments to all land national expenditures	C	(j) Environmental protection	Green box	47.2	65.8
E. Payments based on non-current A/An/R/I, production not required	E	(d) Decoupled income support	Green box	31969.9	34231.2
F1. long-term resource retirement	F	(g) Structural adjustment assistance provided through producer retirement programs	Green box	1122.6	870.3
F3. other non-commodity criteria	F	(k) Regional assistance programmes	Green box	89.8	97.5
F2. a specific non-commodity output	F	(j) Environmental protection	Green box	506.6	706.8
G. Miscellaneous payments	G	Payments in virtue of Art 69 of R 1782/03	Blue box	-75.8	-71.4
Schemes related to production in the olive oil sector	H	Research (i)	Green box	45.1	23.8
(Guidance) Farm accounts	H	Research (i)	Green box	0.0	0.0

PSE-name	PSE-cat.	WTO-name	WTO-box	PSE-value	WTO-value
Community Fund for research and information in the tobacco industry	H	Research (i)	Green box	23.1	12.2
Office communautaire des variétés végétales	H	Research (i)	Green box	0.0	0.0
Farm accountancy network	H	Inspection services (v)	Green box	12.9	8.6
Restructuring of agricultural survey	H	Research (i)	Green box	17.6	9.3
Plant and animal genetic resources	H	Research (i)	Green box	0.0	0.0
Pilot project improved methods for animal friendly production	H	Research (i)	Green box	0.0	0.0
Provision of farm advisory and extension services in BG and RO	H	Extension and advisory services (iv)	Green box	0.0	0.0
National expenditures on research	H	Research (i)	Green box	1898.2	1003.6
I. Agricultural schools	I	Training services (iii)	Green box	1042.5	162.8
Setting up of management relief and advisory services	I	Extension and advisory services (iv)	Green box	0.4	1.4
Office for veterinary and Plant Health Inspection Control	J	Pest and disease control (ii)	Green box	0.0	0.0
Inspection	J	Inspection services (v)	Green box	0.0	0.0
National expenditures on inspection	J	Inspection services (v)	Green box	635.0	421.2
K. Infrastructure - Early retirement apart from (Guidance) Early retirement and (Guidance) Joint investment	K	Infrastructural services (vii)	Green box	4743.2	1238.1
(Guidance) Early retirement	K	(g) Structural adjustment	Green box	0.0	0.0
(Guidance) Joint investment	K	(i) Structural adjustment	Green box	0.0	0.0
Early retirement	K	(g) Structural adjustment	Green box	95.0	73.7
L. Marketing and promotion minus below measures classified in PSE-category L	L	Marketing and promotion services (vi)	Green box	2058.5	1332.7
Promotion measures (fruits and vegetables)	L		Not covered	0.0	0.0
Marketing plans (nuts)	L	Special measure nuts	Non-ex DP	0.0	0.0
Specific measures (processing of asparagus)	L	Production aid asparagus	Non-ex DP	0.0	0.0
Aid for the use of must	L	Privat storage aid, distillation, aids for specific uses wine	Non-ex DP	164.2	608.0
Market losses storage specific marketing actions (raisin)	L		Not covered	0.1	0.0
National support programs for the wine sector	L		Not covered	0.0	0.0
Refunds related to Community food aid (cereals)	L	(c) Domestic food aid	Green box	0.8	0.8
Refunds related to Community food aid (rice)	L	(c) Domestic food aid	Green box	0.1	0.1

PSE-name	PSE-cat.	WTO-name	WTO-box	PSE-value	WTO-value
Refunds related to Community food aid (sugar)	L	(c) Domestic food aid	Green box	0.0	0.0
Refunds related to Community food aid (skim.milk powder)	L	(c) Domestic food aid	Green box	0.0	0.0
Refunds related to Community food aid (butter oil)	L	(c) Domestic food aid	Green box	0.0	0.0
Refunds related to Community food aid (oil/olive oil)	L	(c) Domestic food aid	Green box	0.0	0.0
Refunds related to Community food aid (Others)	L	(c) Domestic food aid	Green box	0.6	0.6
(Guidance) Management services	L	Extension and advisory services	Green box	0.0	0.0
Production aid for processing citrus	L	Production aid citrus fruit for processing, Citrus fruit for processing (oranges, mandarins, clementines, satsumas)	Non-ex DP	196.9	196.9
Citrus registry	L		Not covered	0.0	0.0
M. Public stockholding	M	Public stockholding	Green box	253.4	49.6
Monitoring and prevention measures for EAGGF guarantee (fraud)	N2	Inspection services (v)	Green box	6.0	4.0
Production aid for processed tomato products	Q1	Production aid tomatoes for processing, Tomatoes for	Non-ex DP	229.6	229.6
Production aid for tinned pineapple	Q1	Tinned pineapple	Non-ex DP	0.0	0.0
Production refunds for starch for cereals	Q2		Not covered	0.0	0.0
School fruit scheme	Q2	(c) Domestic food aid	Green box	0.0	0.0
National expenditures on consumption aid	Q2	(c) Domestic food aid	Green box	102.2	97.2
Production aid for fruit-based products	Q2	Direct aid bananas, Production aid lemons for processing, Production aid peaches for processing, Production aid pears for processing, Production aid plums for processing, Production aid figs for processing, Production aid grapes for processing	Non-ex DP	71.2	81.5
Distribution of agricultural products to the most deprived persons in the Community	Q2	(c) Domestic food aid	Green box	344.4	327.7
Free distribution of fruits and vegetables	Q2	(c) Domestic food aid	Green box	2.4	2.3

Notes:

1. The list comprises all policy measures listed in the PSE-database for which there was a positive monetary amount in at least one year for the period 1995 to 2009.
2. The list does not contain policy measures that are notified to the WTO, but not listed in the PSE-database.

3. There is no one-to-one correspondence for most green box measures as the EU notifies green box measures en bloc with one monetary amount for each green box categories. The notification lists the support measures that are included for each green box category. These are presented below:

(d) Decoupled income support: Single Payment Scheme, Separate Sugar Payment, Decoupled Complementary National Direct Payments, agri-monetary aid, transitional aid to agricultural income

(f) Natural disaster relief payments: Reconstruction and restoration of agricultural production potential damaged by natural disasters, prevention of natural disasters

(g) Structural adjustment assistance provided through producer retirement programs: Compensation payments to farmers at least 55 years old leaving agriculture, aid for early retirement from farming

(i) Structural adjustment assistance provided through investment aids: Aid for farm modernisation; purchase of machinery, equipment, animals, buildings and plantations; aid for young farmers; restructuring and conversion of vineyards; investment in restructuring of semi-subsistence farming; reallocation of land, diversification of rural activity and quality improvement schemes; preliminary investment in setting up producer groups; restructuring of the sugar industry; completion of earlier programmes under EAGGF.

(j) Environmental protection: Protection of environment and preservation of the countryside, aid for environmentally sensitive areas; support and protection of organic production by creating conditions of fair competition; aid for forestry measures in agriculture; conservation and improvement of rural heritage.

(k) Regional assistance programmes: Specific measures for the benefit of certain disadvantaged areas (French overseas departments, Azores, Madeira, Canary Islands, Aegean Islands), other outermost regions, less-favoured areas (LFA) and mountainous areas.

Annex (cont.) Matching support measures for the US in 2009 by PSE-categories

PSE-name	PSE-category	WTO-name	WTO-box	PSE-value	WTO-value
Wheat	A1		Not covered	0.0	0.0
Maize	A1		Not covered	0.0	0.0
Barley	A1		Not covered	0.0	0.0
Sorghum	A1		Not covered	0.0	0.0
Rice	A1		Not covered	0.0	0.0
Soybeans	A1		Not covered	0.0	0.0
Sheepmeat	A1		Not covered	30.6	0.0
Wool	A1		Not covered	0.2	0.0
Pigmeat	A1		Not covered	0.0	0.0
Poultry	A1		Not covered	0.0	0.0
Eggs	A1		Not covered	0.0	0.0
Cotton	A1		Not covered	0.0	0.0
Beef	A1	Beef	MPS	0.0	0.0
Milk	A1	Dairy, Butter, Non-fat dry milk, Cheddar cheese	MPS	2 305.7	2 826.9
Other MPS	A1	Peanuts	MPS	1 122.4	0.0
Sugar	A1	Sugar	MPS	450.8	1 240.9
Loan deficiency payments	A2	Loan deficiency payments	Non-ex DP	124.4	124.4
Commodity loans forfeit	A2	Commodity loans forfeit	Non-ex DP	0.1	0.1
Marketing loan gains	A2	Marketing loan gains	Non-ex DP	2.5	2.5
Certificate exchange gains	A2	Certificate exchange gains	Non-ex DP	4.4	4.4
Commodity loan interest subsidy	A2	Commodity loan interest subsidy	Non-ex DP	83.5	83.5
Storage payments	A2	Storage payments	Non-ex DP	0.3	0.3
Market loss payments	A2	Market loss payments	Non-ex DP	0.0	0.0
Trade adjustment payments	A2	Trade adjustment payments	Non-ex DP	0.0	0.0
Dairy Economic Loss Assistance	A2		Not covered	290.0	0.0
Certificate exchange gains	A2	Certificate exchange gains	Non-ex DP	4.4	4.4
Commodity loan interest subsidy	A2	Commodity loan interest subsidy	Non-ex DP	85.8	83.5
Commodity loans forfeit	A2	Commodity loans forfeit	Non-ex DP	0.1	0.1
Cottonseed disaster payments	A2	Cotton, seed payments	Non-ex DP	0.0	0.0
Dairy indemnities (based on cwt of <milk lost)	A2	Dairy, dairy indemnities	Non-ex DP	0.7	0.2
Dairy market loss payments (MILC program)	A2	Dairy, milk income loss contracts (MILC)	Non-ex DP	756.9	0.0
Loan deficiency payments	A2	Loan deficiency payments	Non-ex DP	124.4	124.4
Market loss payments	A2	Market loss payments	Non-ex DP	0.0	0.0
Marketing loan gains	A2	Marketing loan gains	Non-ex DP	2.5	2.5
Wool and mohair payments	A2	Mohair, support payments, Wool, support payments	Non-ex DP	0.0	0.0
Storage payments	A2	Storage payments	Non-ex DP	0.3	0.3
Sugar payments in kind (grower share)	A2	Sugar, sugar cooperative payment, Sugar, diversion payment	Non-ex DP	0.0	0.0
Trade adjustment payments	A2	Trade adjustment payments	Non-ex DP	0.0	0.0
Hard white wheat incentive payments	A2	Wheat, hard white wheat payments	Non-ex DP	0.0	0.0
Energy subsidies	B1		Not covered	2 385.0	0.0
Conservation Security Program (CSP)	B1	Farm Service Agency (FSA), conservation stewardship program,	Green box	127.4	127.3
Farm operating loans (Agricultural credit program)	B1	Farm Service Agency (FSA), farm credit programs	Green box	43.1	93.8
Irrigation support	B1	Irrigation on Bureau of Reclamation	Non-ex DP	203.8	203.8

PSE-name	PSE-category	WTO-name	WTO-box	PSE-value	WTO-value
Feed assistance	B1	Livestock, forage payments, Emergency feed programme, Pasture Recovery program, Flood compensation program, American Indian Livestock Feed Program, Forage assistance programme, Disaster reserve assistance programme	Non-ex DP	98.5	97.1
Grazing subsidies	B1	Net Federal budget outlays for grazing livestock on Federal Land	Non-ex DP	43.5	44.8
Agricultural Conservation Program (ACP)	B2		Not covered	0.0	0.0
Grassroots Source Water Protection Program	B2		Not covered	20.0	0.0
Apple Loans Program account	B2		Not covered	0.0	0.0
Environmental Quality Incentives Program (EQIP)	B2	Environmental Quality Incentives Program (EQIP)	Green box	982.7	982.7
Agricultural Management Assistance Program (AMA)	B2	Farm Service Agency (FSA), agricultural management assistance program	Green Box	0.0	7.0
Colorado River Salinity Control Program	B2	Farm Service Agency (FSA), colorado river basin salinity control	Green box	0.0	0.0
Conservation Security Program (CSP)	B2	Farm Service Agency (FSA), conservation stewardship program	Green box	127.4	127.3
Emergency Conservation Program (ECP)	B2	Farm Service Agency (FSA), emergency conservation program	Green Box	181.0	71.0
Farm ownership loans (Agricultural credit program)	B2	Farm Service Agency (FSA), farm credit programs	Green Box	10.2	22.2
Farmland Protection program (FPP)	B2	Farm Service Agency (FSA), farmland protection program, Farm Service Agency (FSA), farm and ranch land protection program, Commodity Credit Corporation (CCC), farmland protection program	Green box	121.0	121.0
Grassland Reserve Program (GRP)	B2	Farm Service Agency (FSA), grassland reserve program	Green box	45.6	45.6
Great Plains Conservation Program (GPCP)	B2	Farm Service Agency (FSA), great plains conservation program	Green box	0.0	0.0
Ground and Surface Water Program (GSWP)	B2	Farm Service Agency (FSA), ground and surface water	Green box	0.0	0.0
Klamath basin	B2	Farm Service Agency (FSA), Klamath Basin	Green box	0.0	0.0
Farm Storage Facility Loan Program	B2	Farm storage facility loans	Non-ex DP	3.8	4.6
Livestock indemnity program (disaster relief)	B2	Livestock indemnity programme, Livestock, livestock indemnities	Non-ex DP	3.0	62.4
Conservation Technical Assistance (CTA), GPCP -- Technical Assistance (TA), Klamath Basin -- TA, GSWP -- TA, AMA -- TA, ACP -- TA, ECP -- TA	B3	Farm Service Agency (FAS) & Natural Resource, conservation service, Farm Service Agency (FAS), conservation program TA, Natural Resource Conservation Service (NRCS), conservation program technical assistance, Commodity Credit Corporation (CCC), conservation program, TA	Green box	814.0	745.3

PSE-name	PSE-category	WTO-name	WTO-box	PSE-value	WTO-value
Pesticides 68-200-0-1-304 (until 1995)	B3		Not covered	0.0	0.0
Safe food 68-0107-0-1-304 (from 1996)	B3		Not covered	0.0	0.0
Safe food 68-0108-0-1-304 (from 1996)	B3		Not covered	0.0	0.0
Animal & plant health inspection service (I-E69) 12-1600-0-1-352+12-1601-0-1-352+12-9971-0-7-352	B3	Animal & Plant Health Inspection Service (APHIS), salaries and expenses, Animal & Plant Health Inspection Service (APHIS), buildings and facilities, Animal & Plant Health Inspection Service (APHIS), misc trust funds	Green box	1 183.0	2 349.0
Extension service Federal funds (I-E11) 12-0502-0-1-352	B3	Cooperative State Research, Extension, and Education Service (CSREES), buildings and facilities, Cooperative State Research, Extension, and Education Service (CSREES), initiative for future agricultural and food systems, Rural Energy for America Program, State grants for specialty crops, Foreign Agricultural Service (FAS), trade adjustment assistance for farmers	Green box	467.0	28.0
EQIP -- TA	B3	Environmental Quality Incentives Program (EQIP)	Green box	354.3	354.3
Conservation Technical Assistance (CTA), GPCP -- Technical Assistance (TA), Klamath Basin -- TA, GSWP -- TA, AMA -- TA, ACP -- TA, ECP -- TA	B3	Farm Service Agency (FAS) & Natural Resource, conservation service, Farm Service Agency (FAS), conservation program TA, Natural Resource Conservation Service (NRCS), conservation program technical assistance, Commodity Credit Corporation (CCC), conservation program, TA	Green Box	745.3	814.0
Colorado River Salinity Control Program -- TA	B3	Farm Service Agency (FSA), colorado river basin salinity control	Green box	0.0	0.0
Conservation Security Program (CSP) -- TA	B3	Farm Service Agency (FSA), conservation stewardship program	Green box	28.3	28.3
FPP -- TA	B3	Farm Service Agency (FSA), farmland protection program	Green box	0.0	0.0
GRP -- TA	B3	Farm Service Agency (FSA), grassland reserve program	Green box	2.4	2.4
Agricultural cooperative service Fed. funds (I-E84) 12-3000-0-1-352	B3	Rural Bus. And Coop. Development (RBCD), ag cooperative service	Green Box	0.0	27.0
State technical assistance	B3	State programs for agriculture	Green Box	2 151.2	2 151.0
Crop insurance Wheat... Crop insurance Other	C	Crop and revenue insurance subsidized by the Fed Crop Insurance Corp	Non-ex DP	5 417.9	5 426.0
Deficiency payments up to 1995 Wool	C		Not covered	0.0	0.0
Lamb Meat Adjustment Assistance Program	C		Not covered	0.0	0.0
Ewe Lamb Replacement and Retention Program	C		Not covered	0.0	0.0

PSE-name	PSE-category	WTO-name	WTO-box	PSE-value	WTO-value
Income tax concessions	C		Not covered	1 344.2	0.0
Adjusted gross revenue insurance	C		Not covered	8.1	0.0
ACRE	C	ACRE	Non-ex DP	446.6	446.6
ACRE Chick Peas	C	ACRE	Not covered	0.0	0.0
Dairy disaster payment	C	Dairy, production disaster assistance, Dairy, hurricane indemnity, Dairy, disaster payments	Non-ex DP	0.0	0.0
Deficiency payments up to 1995 Maize	C	Deficiency payments, corn	Blue box	0.0	0.0
Deficiency payments up to 1995 Rice	C	Deficiency payments, rice	Blue box	0.0	0.0
Deficiency payments up to 1995 Sorghum	C	Deficiency payments, sorghum	Blue box	0.0	0.0
Deficiency payments up to 1995 Wheat	C	Deficiency payments, wheat	Blue box	0.0	0.0
Crop disaster payments (ad hoc)	C	Farm Service Agency (FSA), crop disaster payments, Virginia hurricane crop loss program, Florida hurricane disaster program, Livestock disaster program, livestock compensation program, Sugar beet disaster program	Green Box	550.0	0.0
Non-insured Crop Disaster Assistance Program	C	Farm Service Agency (FSA), non-insured crop disaster assistance program	Non-ex DP	95.0	95.0
Crop disaster payments (ad hoc)	C	Multi-year crop disaster payment	Non-ex DP	0.0	0.0
Tree and vineyard disaster payments	C	Orchards, vineyards, nursery, tree assistance payments	Non-ex DP	0.0	0.7
Tree assistance for pecans	C	Pecan trees, tree assistance program (disaster assistance)	Non-ex DP	0.0	0.0
Lost Poultry Contract Assistance (LPCA)	C	Poultry, growers loss payment	Non-ex DP	27.6	27.7
Hogs production assistance	C	Small hog program payments	Non-ex DP	0.0	0.0
Sugar beet disaster payments	C	Sugar, hurricane payment	Non-ex DP	0.0	0.0
Crop disaster payments (SURE)	C	Supplemental Crop Revenue	Non-ex DP	20.9	166.5
Counter-cyclical payments	E	Countercyclical payments	Non-ex DP	220.5	220.5
Crop market loss assistance	E	Crop market loss assistance payment	Non-ex DP	0.0	0.0
Direct payments	E	Farm Service Agency (FSA), Direct payments	Green box	5 222.3	5 222.0
Peanut quota buy out	E	Farm Service Agency (FSA), Peanut quota buyout	Green box	0.0	0.0
PFC payments (1996 Farm Bill)	E	Farm Service Agency (FSA), Production flexibility contract payments	Green box	0.0	0.0
Tobacco quota buy out	E	Farm Service Agency (FSA), tobacco quota buyout	Green box	953.2	953.0
Water Bank Program (WBP), WBP -- TA	F	Farm Service Agency (FSA), water bank program	Green box	0.0	0.0
Wetland Reserve Program (WRP), WRP -- TA	F	Farm Service Agency (FSA), wetland reserve program	Green box	397.7	431.0
Wildlife Habitat Incentives Program (WHIP), WHIP -- TA	F	Farm Service Agency (FSA), wildlife habitat incentives program	Green box	85.0	85.0
Voluntary Public Access Incentive Program	F		Not covered	50.0	0.0

PSE-name	PSE-category	WTO-name	WTO-box	PSE-value	WTO-value
Voluntary Public Access Incentive Program	F		Not covered	0.0	0.0
Conservation Reserve Program (CRP) -- TA	F	Commodity Credit Corporation (CCC), conservation program TA	Green box	102.0	0.0
CRP	F	Farm Service Agency (FSA), conservation reserve program, Commodity Credit Corporation (CCC), conservation reserve program, Farm Service Agency (FSA), conservation reserve program, Commodity Credit Corporation (CCC), conservation program	Green box	1 979.7	2 036.0
Water Bank Program (WBP), WBP -- TA	F	Farm Service Agency (FSA), water bank program	Green box	0.0	0.0
Wetland Reserve Program (WRP), WRP -- TA	F	Farm Service Agency (FSA), wetland reserve program	Green box	397.7	431.0
Wildlife Habitat Incentives Program (WHIP), WHIP -- TA	F	Farm Service Agency (FSA), wildlife habitat incentives program	Green box	85.0	85.0
Office of international cooperation and development (I-E17) 12-3200-0-1-352 +12-1404-0-1-352 + 12-8232-0-7-352	H		Not covered	0.0	0.0
Bureau of the Census	H		Not covered	0.0	0.0
Soil surveys, Plant materials centers, Snow surveys, Resourcee Conservation and Development (RC&D)	H	Natural Resrouce Conservation Service (NRCS), conservation operations, Natural Resrouce Conservation Service (NRCS), resource conservation and development	Green box	167.7	891.0
Agricultural Research Service (I-E47) 12-1400-0-1-352 + 12-1401-0-1-352 + 12-8214-0-7-352 + 12-0300-0-1-352	H	Agricultural Research Service (ARS), agricultural research, Agricultural Research Service (ARS), buildings and facilities, Agricultural Research Service (ARS), misc contrib funds	Green box	1 200.0	1 200.0
Biomass Research and development	H	Cooperative State Research, Extension, and Education Service (CSREES), biomass R&D	Green Box	14.0	14.0
Cooperative State Research Service 12-1500-0-1-352 + 12-1501-0-1-352	H	Cooperative State Research, Extension, and Education Service (CSREES), research and education activities, Cooperative State Research, Extension, and Education Service (CSREES), integrated activities, Cooperative State Research, Extension, and Education Service (CSREES), extension activities, Cooperative State Research, Extension, and Education Service (CSREES), outreach for socially disadv farmers, Cooperative State Research, Extension, and Education Service (CSREES), biomass R&D	Green box	638.0	1 182.0
Economic research service 12-1701-0-1-352 + 12-8227-0-7-352	H	Economic Research Service (ERS)	Green box	80.0	80.0

PSE-name	PSE-category	WTO-name	WTO-box	PSE-value	WTO-value
National Agricultural Statistic Service 12-1801-0-1-352 + 12-8218-0-7-352	H	National Agricultural Statistical Service (NASS)	Green box	145.0	145.0
Tennessee Valley Authority	H	Tennessee Valley Authority (TVA), agricultural institute, Tennessee Valley Authority (TVA), national fertilizer development, Tennessee Valley Authority (TVA), agriculture 12 farming systems, Tennessee Valley Authority (TVA), pollution prevention, Tennessee Valley Authority (TVA), waste management programs	Green box	0.0	0.0
Agricultural Resource Conservation&Demonstration Program	I		Not covered	0.0	0.0
Food safety and inspection service (I-E78) 12-3700-0-1-554 + 12-8137-0-7-352	J	Food Safety Inspection Service (FSIS), salaries and expenses, Food Safety Inspection Service (FSIS), insp & grading of farm products	Green box	963.0	963.0
Packers & Stockyard administration (I-E84) 12-2600-0-1-352	J	Grain Inspection, Packers and Stockyard Administration (GIP&S)	Green box	0.0	0.0
Federal Grain Inspection Service (I-E71) 12-2400-0-1-352 + 12-4050-0-3-352	J	Grain Inspection, Packers and Stockyard Administration (GIP&S)	Green Box	41.0	40.0
Rural Housing For Domestic Farm Labor (I-E48) 12-2004-0-1-604	K		Not covered	0.0	0.0
Flood prevention (operations)	K		Not covered	0.0	0.0
Small watershed program (operations)	K		Not covered	0.0	0.0
Emergency Watershed Protection	K		Not covered	268.1	0.0
Watershed investigations and survey (planning)	K		Not covered	0.0	0.0
Watershed rehabilitation	K		Not covered	54.7	0.0
Watershed protection / Flood prevention & emergency	K		Not covered	46.2	0.0
State Mediation Grants 12-0170-0-1-351	K	Farm Service Agency (FSA), state mediation grants	Green Box	4.0	4.0
Outreach-socially disadvantaged farmers 12-0601-0-1-351	K	Farm Service Agency (SFA), outreach for socially disadvantaged farmers, Natural Resource Conservation Service (NRCS), outreach for socially disadvantaged farmers	Green box	0.0	0.0
Risk Management Agency admin and operating expenses	K	Risk Management Agency (RMA), administrative and operating expenses	Green box	73.0	73.0
Crop insurance admin&operating reimbursements	K	Risk Management Agency (RMA), administrative and operating reimbursements to insurers	Green Box	1 602.0	1 602.0
Crop insurance Underwriting gains	K	Risk Management Agency (RMA), underwriting gains to insurers	Green Box	810.0	810.0

PSE-name	PSE-category	WTO-name	WTO-box	PSE-value	WTO-value
Rural tech & coop dev grants 12-1900-0-1-452	K	Rural Bus. And Coop. Development (RBCD), ag cooperative service, Rural Bus. And Coop. Development (RBCD), alternative ag research, Rural Bus. And Coop. Development (RBCD), rural develop grants	Green Box	27.0	27.0
Renewable Energy Program	K	Rural Bus. And Corp programs (RBCP), renewable energy program	Green Box	27.0	0.0
Payments to States 12-2501-0-1-352...	L	Agricultural Marketing Service (AMS), marketing services....Agricultural Marketing Service (AMS), expenses, refunds, grading of farm products	Green Box	172.0	259.0
Strengthening markets income and supply 12-5209-0-2-605	L		Not covered	948.0	0.0
PI480 Food for progress credits 12-2273-0-1-151	L		Not covered	0.0	0.0
Public law 480 program 12-2277-0-1-351(151)	L		Not covered	32.0	0.0
Public law 480 program and grant accounts (including transfer of funds) 12-2278-0-1-151	L		Not covered	2 013.0	0.0
General Sales Manager 12-2900-0-1-352	L		Not covered	193.0	0.0
Export donations ocean transportation	L		Not covered	40.0	0.0
Commodity Credit Corporation Export Loan Program Account 12-1336-0-1-351	L		Not covered	80.0	0.0
Commodity Credit Corporation Guaranteed Loans Liquidating Account 12-4338-0-3-351	L		Not covered	0.0	0.0
McGovern-Dole Food for Education and Child Nutrition	L		Not covered	127.0	0.0
Marketing Service 12-2500-0-1-352	L	Agricultural Marketing Service (AMS) - Section 32	Green box	87.0	948.0
Payments to States 12-2501-0-1-352...	L	Agricultural Marketing Service (AMS), marketing	Green Box	172.0	259.0
Food Program Administration 12-3508-0-1-605	L	Food Program Administration	Green box	143.0	143.0
Food Stamp Program (coefficient 12-3505-0-1-605)	L	Food Stamp Program	Green box	44 483.2	44 483.2
National Sheep Industry Improvement Center	L	National Sheep Industry Improvement Center , lamb marketing and promotion program	Green Box	0.0	0.0
Public stockholding	M		Not covered	20.0	0.0
1. National expenditure	N		Not covered	0.0	0.0
2. Sub-national expenditure	N	State programs for agriculture	Green Box	2 151.2	2 151.0
State Child Nutrition Program 12-3539-0-1-605	Q1	Child Nutrition Program	Green box	15 252.0	15 252.0
Commodity assistance program 12-3507-0-1-605	Q1	Commodity Assistance Program (CAP)	Green box	369.0	369.0
Donation Program for Selected Groups 12-3503-0-1-605	Q1	Food donation program	Green box	0.0	0.0

PSE-name	PSE-category	WTO-name	WTO-box	PSE-value	WTO-value
Food stamp program (coefficient 12-3505-0-1-605)	Q1	Food Stamp Program	Green box	11 120.8	11 120.8
WIC nutrition programs 12-3510-0-1-605	Q1	Special Supplemental Nutrition program for Women, Infants, and Children	Green box	6 480.0	6 480.0
Sugar loan forfeit subsidy (processor share)	Q2		Not covered	0.0	0.0
Sugar Payments in Kind (processor share)	Q2		Not covered	0.0	0.0
Mustardseed	Q2		Not covered	0.0	0.0
Sunflower oil	Q2		Not covered	0.0	0.0
Canola oil	Q2	Canola, biodiesel program payments	Non-ex DP	0.0	0.0
Maize	Q2	Corn, bioenergy program payments	Non-ex DP	0.0	0.0
ELS Cotton Program	Q2	Cotton, ELS cotton use marketing payments	Non-ex DP	9.6	27.9
Upland Cotton Economic Adjustment Assistance Program	Q2	Cotton, upland cotton EAA	Non-ex DP	74.7	75.6
Upland Cotton User Marketing payments Domestic share	Q2	Cotton, user marketing payment, Cotton, user marketing payments	Non-ex DP	0.0	0.0
Animal fats/oils	Q2	Livestock, biodiesel program payments	Non-ex DP	0.0	0.0
Sorghum	Q2	Sorghum, bioenergy program payments	Non-ex DP	0.0	0.0
Soybean oil	Q2	Soybeans, bioenergy program payment	Non-ex DP	0.0	0.0
Sugar loan interest subsidy (processor share)	Q2	Sugar, commodity loan interest subsidy	Non-ex DP	10.6	5.1
Sugar production levy (processor share) (-)	Q2	Sugar, fees/levies	Non-ex DP	0.0	4.3
Wheat	Q2	Wheat, bioenergy program payment	Non-ex DP	0.0	0.0