

CFR-working paper no. 07-06

**Transaction costs
and value premium**

v. Agarwal • L. Wang

centre for financial research
Look deeper

Transaction Costs and Value Premium

Vikas Agarwal
Georgia State University and CFR

Lingling Wang*
Georgia State University

JEL Classifications: G12, G14

Abstract

Value premium has been well documented in the finance literature. This paper empirically examines whether the value strategy of buying value stocks and selling growth stocks is profitable after controlling for transaction costs. Using the limited dependent variable estimate of transaction costs as in Lesmond, Ogden, and Trzcinka (1999), we find that value premium disappears as implementation of a value strategy involves substantial transaction costs. Our results after controlling for size and liquidity are robust to different ways of categorizing value and growth stocks used in the existing literature (Lakonishok, Shleifer, and Vishny (1994), and Fama and French (1993, 2006)) and to different methods of measuring transaction costs.

Key words: Transaction costs, value stocks, growth stocks, value premium, liquidity

* Both Agarwal and Wang are at the Department of Finance, J. Mack Robinson College of Business, Georgia State University, 35 Broad Street, Suite 1221, Atlanta GA 30303, USA. Vikas Agarwal is also a Research Fellow at the Centre for Financial Research (CFR), University of Cologne. Contact details for the authors are: e-mail: vagarwal@gsu.edu and Tel: +1-404-651-2699 (Agarwal) and e-mail: fncllwx@langate.gsu.edu and Tel: +1 404-654-5843 (Lingling). We appreciate valuable suggestions from Ji-chai Lin and Stefan Nagel.

1. Introduction

Starting from Fama and French (1992, 1993), there have been numerous studies showing that stocks with a high book-to-market (BM) ratio (value stocks) outperform stocks with a low book-to-market ratio (growth stocks). Recently, Fama and French (2006) show that the value premium exists for a longer period starting from 1926 to 2005 and that this effect is not driven by small firms. Different explanations for value premium have been proposed in the extant literature including compensation for risk (Fama and French (1996)), mispricing (Lakonishok, Shleifer, and Vishny (1994), La Porta (1996), La Porta, Lakonishok, Shleifer, and Vishny (1997), Griffin and Lemmon (2002), Skinner and Sloan (2002)), data-snooping biases (Conrad, Cooper, and Kaul (2003)), and greater divergence in investors' opinions (Doukas, Kim, and Pantzalis (2004)). Moreover, researchers have argued that value premium is concentrated in small-cap stocks (Kothari, Shanken, and Sloan (1995) and Loughran (1997)), in stocks with greater short-sales constraints (Nagel (2005)), stocks with lower institutional ownership (Phalippou (2007)), and stocks with higher idiosyncratic volatility (Ali, Hwang, and Trombley (2003)). However, there has been little attention paid to the subject of attainability of value premiums in practice. In other words, whether implementing the value strategy of buying value stocks and selling growth stocks is profitable or not after accounting for transaction costs? Our paper fills this gap in the extant literature by empirically examining the transaction costs of implementing value strategy to determine if the value premium is achievable by the investors.

The existence and persistence of value premium depend on transaction costs for several reasons. First, buying and selling stocks to implement value strategy involve non-

trivial transaction costs. Second, if value stocks have high transaction costs, then investors may require high returns on value stocks to compensate for high transaction costs. Based on the modified efficient market hypothesis (Fama (1991)), prices reflect information to the point where the marginal benefits of acting on information do not exceed the marginal costs. If arbitrageurs do not trade value stocks till the costs of trading are smaller than the benefits of trading, the price adjustment of the value stocks will be delayed.¹ Consequently, the value stocks will appear to have higher returns than growth stocks when in fact the transaction-cost-adjusted returns of these two types of stocks are similar. Finally, the persistence of value premium also depends on transaction costs, because transaction costs can prevent the arbitrageurs from arbitraging away the value premium.

We use different measures of transaction costs to examine the profitability of implementing value strategy. Transaction costs have both explicit and implicit components. Amihud and Mendelson (1986) used quoted bid-ask spread as a measure of transaction costs. However, quoted bid-ask spread is a noisy proxy given the fact that many large (small) trades occur outside (inside) the spread. Furthermore, estimate of quoted spread understates the true trading cost as it ignores other related trading costs such as pricing impact, cost of immediacy, and commissions. Theoretical models of Glosten (1989) and the empirical evidence in Glosten and Harris (1988) suggest that asymmetric information effect is most likely captured in the price impact of a trade. Brennan and Subrahmanyam (1996) find a significant return premium associated with illiquidity by measuring both the fixed and variable elements of the transaction costs.

¹ Both Constantinides (1986) and Vayanos (1998) show that the effect of transaction costs on stock prices is small and is perhaps of second-order. However, the attainability of value premium after controlling for transaction costs does not rely on the argument that transaction costs will affect stock prices.

This literature indicates the multidimensional nature of transaction costs, thereby suggesting the use of a comprehensive measure to capture transaction costs. Lesmond, Ogden, and Trzcinka (1999) provide such a measure by proposing the use of limited dependent variable (LDV) procedure to estimate trading costs. We refer to it as the LOT measure. This measure is a comprehensive estimate that includes implicitly not only the components of the spread but also the implied commissions, immediacy costs, and at least some of the cost resulting from the price impact of the trades. Further, as a robustness check, we also use another measures of transaction costs, namely the sum of quoted spread and commission. Since the LOT measure yields smaller trading cost estimates than the sum of traditional quoted spread and commission, it biases us against finding the transaction costs explaining the value premium.²

We find that after controlling for transaction costs in these two alternative ways, the value premium disappears. This result is robust to different ways of sorting the value and growth stocks and use of different return horizons. In particular, we follow the alternative sorting procedures and holding periods in Lakonishok, Shleifer, and Vishny (1994, hereafter LSV) and Fama and French (2006) to estimate the value premium. LSV (1994) classify stocks into book-to-market (henceforth BM) deciles for the period of 1968 to 1989. They find that the average difference between the returns in value portfolio (highest BM decile) and growth portfolio (lowest BM decile) using holding periods of one to five years, is more than 10% per annum in a large number of cases. Fama and French (2006) estimate the value premium during 1926-2005 period by forming six portfolios based on two size groups and three BM groups. For robustness, they also form

² Lesmond, Ogden, and Trzcinka (1999) also find that their measure of transaction costs is more conservative than the often used sum of quoted spreads and commissions.

25 portfolios based on size and BM quintiles. Since the portfolios are rebalanced each year, the effective holding period is one year. Regardless of whether we use LSV (1994) or Fama and French (2006) way of categorizing value and growth stocks, we find that once we control for transaction costs, the value premium disappears.

Recently, Liu (2006) uses a new measure of liquidity and find that liquidity is an important source of priced risk. He argues that the value premium is insignificant after controlling for liquidity. We explicitly account for the differences in liquidity between value and growth stocks by forming 25 portfolios after double sorting on liquidity and book-to-market. We find that the value premium still exists even after controlling for Liu's liquidity measure but disappears once we account for transaction costs.

We believe that the value premium disappears for two reasons. On one hand, value stocks indeed have higher transaction costs than growth stocks. The higher transaction costs of value stock offset the higher returns of value stocks. On the other hand, buying of value stocks and selling of growth stocks also involve non-trivial transaction costs, which deter the arbitrageurs from exploiting the value premium.

The main contribution of this paper is to study the profitability of value strategy and if it is achievable in practice after accounting for transaction costs. Using LOT measure of transaction costs, we find a positive relation between transaction costs and stock returns. This positive relation is consistent with previous studies such as Amihud and Mendelson (1986) and Brennan and Subrahmanyam (1996). The findings of this paper help us to understand why value stocks have higher returns and that the suggested mispricing of value stocks in the literature may be due to higher transaction costs incurred in trading them. Our paper builds on the recent evidence in two related papers. First, Dimson,

Nagel, and Quigley (2003), show that it is difficult to realize profits following a small-cap value strategy in the UK, since it requires substantial rebalancing resulting in high turnover and trading costs. However, due to non-availability of transaction cost data, their focus is largely on portfolio turnover and potential infeasibility of executing value strategy in non-US markets. Second, Houge and Loughran (2006), show that there is no difference between either the performance of value and growth style indexes, or between actively managed value and growth funds. They suggest that high transaction costs and price impact of trading may be driving their results. However, since their analysis uses actively managed funds, where managers may be influenced by career concerns and other incentives, it is not clear if transaction costs alone are responsible for the absence of value premium. Our paper explicitly controls for transaction costs in different ways to show that the value premium, as documented in the large academic literature, may not be achievable by the investors.

The paper is organized as follows. Section 2 briefly reviews the extant literature. Section 3 describes the sample data. Section 4 provides the details of different measures of transaction costs. Section 5 estimates the value premium and transaction costs involved in the implementation of value strategy. Section 6 shows the results of the value premium after adjusting for transaction costs. Section 7 offers concluding remarks.

2. Literature Review

Value strategy involves buying stocks that have low prices relative to earnings, dividends, historical prices, book assets, or other measures of value. For more than two decades, value strategy has attracted significant attention from both academics and

practitioners. Rosenberg, Reid, and Lanstein (1985), Chan and Chen (1991), Fama and French (1992, 1993, 1996, 2006), LSV (1994), La Porta (1996), and La Porta et al. (1997) provide profound evidence that stocks with high book values of equity relative to their market values outperform the market. For example, Fama and French (2006) find that value premium exists for 1926 to 2005 and that it is not confined to small firms.

Although there is general consensus on the existence of value premium, there have been different explanations offered for why it exists. LSV (1994) and La Porta et al. (1997) argue that investors are very pessimistic about value stocks and the market slowly realize that earnings growth rates for value stocks are actually higher than it was initially expected. Rozeff and Zaman (1998) provide further evidence that insiders are taking advantage of mispricing by studying insider behavior when stocks move between value and growth categories. Piotroski (2000) use F-scores to separate value stocks into weak value and strong value. In contrast to market efficiency, Piotroski finds that strong value (healthier and less risky) firms appear to deliver stronger returns. Similarly, Mohanram (2004) uses a G-score index to separate growth stocks into winning growth and losing growth. He finds that the firms that ex-ante, appear less risky have better future returns. However, none of these papers can explain why the arbitrageurs do not take advantage of the obvious and high abnormal returns, if the value premium is a result of mispricing. Ali, Hwang, and Trombley (2003) find that book-to-market effect is greater for stocks with higher idiosyncratic return volatility. They argue that this finding is consistent with Shleifer and Vishny (1997) that the volatility will deter arbitrage activity and is an important reason for the existence of BM effect.³

³ Ali, Hwang, and Trombley (2003) use the frequency of price, volume, and zero daily returns as their measure of transaction costs. In their multivariate analysis using these measures, they do not find a

Fama and French (1996) are able to capture the value premium in their three-factor model and they argue that the value premium is a compensation for additional fundamental risk. Doukas, Kim, and Pantzalis (2002) (DKP) directly test the expectation error hypothesis and find that investors are more optimistic about value stocks than growth stocks by using forecast error and forecast revision to proxy investors' expectations. DKP's results directly reject the hypothesis that market mispricing caused by extrapolative expectation errors is the source of value premium. Recently, Liu (2006) uses a new measure of liquidity for individual stocks and find that value stocks are mostly illiquid. Using his liquidity measure as an additional factor in the CAPM, he finds that his two-factor CAPM performs better than the Fama and French three-factor models. Liu's findings provide evidence that liquidity risk might be the additional fundamental risk that can explain the value premium.

However, there has been little attention paid in the literature on the attainability of value premium in practice. There are two recent papers that have attempted to address this issue. First, using data on actively managed mutual funds and style indexes, Houge and Loughran (2006) find evidence on value funds or indexes failing to outperform their growth counterparts. Second, using UK data, Dimson, Nagel, and Quigley (2003) show that it is difficult to realize profits following a small-cap value strategy in the UK, since it requires substantial rebalancing resulting in high turnover and trading costs. Our paper contributes to this burgeoning literature by directly examining the value strategy as described in the academic literature and then adjusting for the transaction costs using a

significant relation between transaction costs and BM effect. Unlike this study, they do not study the magnitude of the transaction costs and the transaction-cost-adjusted value premium. Furthermore, given the high correlation between idiosyncratic volatility and transaction costs in their study, it is difficult to determine which one is the driving factor of the BM effect. High transaction costs can deter arbitrage activity and at the same time increase stock return volatility as well.

comprehensive measure to demonstrate that value strategy may not be profitable in practice. This, in turn, helps us understand why it persists over time and explains why the arbitrageurs are perhaps not able to exploit it.

Finally, our paper also contributes to the literature that use transaction costs to explain different asset pricing anomalies such as the small firm effect (Stoll and Whaley (1983)), January effect (Reinganum (1983) and Bhardwaj and Brooks (1992)), post-earnings announcement drift (Bhushan (1994)), closed-end fund discount (Pontiff (1996)), and momentum effect (Lesmond, Schill, and Zhou (2004)).

3. Data and sample construction

The sample consists of all New York Stock Exchange (NYSE), American Stock Exchange (AMEX), and NASDAQ ordinary common stocks that appear on the Center for Research in Securities Prices (CRSP) and on COMPUSTAT tapes with data available for certain income statement and balance sheet items. We exclude real estate investment trusts (REITs), American Depository Receipts (ADRs), closed-end mutual funds, foreign stocks, unit investment trusts, and American trusts. The sample period is from January 1973 to December 2005.

Book-to-market (BM hereafter) is the ratio of book equity to the market value of equity. Follow Fama and French (1993) and Cohen, Polk and Vuolteenaho (2003), we define book equity as the sum of COMPUSTAT book value of stockholders' equity (data216) and balance-sheet deferred taxed and investment tax credit (if available) less the book value of preferred stock. Depending on availability, we use the redemption, liquidation, or par value, in that order to estimate the value of preferred stock. If book

value of stockholders' equity is not available in COMPUSTAT, we calculate book equity as the sum of common equity (data60) and the par value of preferred stocks. If common equity is not available, we calculate the stockholder equity as the difference of total assets and total liabilities. Market equity is the product of number of shares outstanding and the closing price of the stock in December of year t . To be included in the sample, the common stock of a U.S. firm must have a CRSP value of equity in December of year $t-1$ and June of year t . To mitigate the potential survivorship bias in the COMPUSTAT database, we require that a firm must have at least two years history in COMPUSTAT before it is included in portfolio construction. We exclude stocks with negative book value of stockholder's equity.

We use CRSP daily data for estimating transaction costs. We use three alternative transaction cost estimates in this paper: (1) Quoted Spread + Commission; (2) Roll's (1984) spread; and (3) LOT measure using the LDV procedure. We discuss estimation of these different types of transaction costs in greater detail in the following section.

4. Measures of Transaction Costs

There are mainly two methods of estimating transaction costs that have been used in the literature. The first method that is used traditionally is the bid-ask spread and commissions (S+C). The second method is more comprehensive, and includes price impact, immediacy costs, and short-sale constraints, etc. To demonstrate the robustness of our results, we use three transaction costs measures in this paper: (1) Quoted bid-ask spread plus commission; (2) Roll's (1984) spread; (3) the comprehensive Lesmond,

Ogden, and Trzcinka (LOT) (1999) measure. We discuss each of these measures in greater details below.

4.1 Traditional measure of transaction costs

Three different types of bid-ask spread measures have been used in the existing literature. The first one is the quoted bid-ask spread. Amihud and Mendelson (1986), Stoll and Whaley (1983), and Bhardwaj and Brooks (1992) use this measure. Quoted bid-ask spread for stock i in year t is defined as:

$$\text{Quoted Spread } (i, t) = \frac{1}{12} \sum_{m=1}^{12} \frac{(Ask(i, t, m) - Bid(i, t, m))}{\frac{1}{2}(Ask(i, t, m) + Bid(i, t, m))} \quad (\mathbf{1})$$

The second type of bid-ask spread used is the direct effective spread (Lee and Ready (1991)). If a trade price is greater (less) than the midpoint of a quoted bid-ask prices, then the trade is classified as a buy (sell). If the trade price equals to the midpoint, then the direct effective spread is zero.

The third type of bid-ask spread used is Roll's effective spread. In Roll (1984), Roll argues that given market efficiency, the effective bid-ask spread can be measured by $\text{Spread} = 2\sqrt{-\text{cov}}$. The "cov" in the equation stands for the first-order serial covariance of price changes. Roll's model requires a negative autocovariance structure in the returns. However, positive serial correlation occurs quite frequently when using daily data (40%). Due to its restrictive assumptions, Roll's spread could be biased.

As pointed out earlier, the main limitation of each of these bid-ask spread measures is that they all understate the true costs of trading by omitting relative trading costs such as price impact, immediacy costs, commissions, or short-sale constraints. The second measure of transaction cost that we use, addresses this limitation.

4.2 Lesmond, Ogden, and Trzcinka (LOT) measure

Lesmond, Ogden, and Trzcinka (1999) present a model based on limited dependent variable (LDV) procedure. The model requires only the time series of daily security returns to endogenously estimate the effective transaction costs for a stock. The assumption of this measure is that arbitrageurs trade only if the value of accumulated information exceeds the marginal cost of trading. If trading costs are sizable, new information must accumulate longer before investors engage in trading. Therefore, frequency of the zero-return days can be a proxy for the length of information accumulation.

In the LDV model, the relation between measured returns, R_{jt}^* , and realized return, R_{jt} , is given as:

$$R_{jt}^* = \beta_j R_{mt} + e_{jt}, \quad (2)$$

where

$$\begin{aligned} R_{jt} &= R_{jt}^* - \alpha_{1j} & \text{if} & \quad R_{jt}^* < \alpha_{1j} \\ R_{jt} &= 0 & \text{if} & \quad \alpha_{2j} < R_{jt}^* < \alpha_{1j} \\ R_{jt} &= R_{jt}^* - \alpha_{1j} & \text{if} & \quad R_{jt}^* > \alpha_{2j} \end{aligned} \quad (3)$$

α_{1j} is the seller-side trading cost and $\alpha_{2j} > 0$ is the purchase side cost for asset i . Assuming returns are normally distributed; estimates of α_{1j} and α_{2j} can be obtained by maximizing the following log-likelihood function:

$$\begin{aligned} \ln L = & \sum_{R1} \ln \frac{1}{\sqrt{2\pi} * \text{sqr}(\sigma(i))} - \sum_1 \frac{\text{sqr}(R(i,t) + \alpha 1(i) - \beta(i)Rm(t))}{2 * \text{sqr}(\sigma(i))} + \sum_{R2} \ln \frac{1}{\sqrt{2\pi} * \text{sqr}(\sigma(i))} \\ & - \sum_2 \frac{\text{sqr}(R(i,t) + \alpha 2(i) - \beta(i)Rm(t))}{2 * \text{sqr}(\sigma(i))} + \sum_{R0} \ln(\phi 2(i) - \phi 1(i)) \end{aligned} \quad (4)$$

In this function, $R1$ denotes the non-zero negative return region, $R2$ denotes the non-zero positive return region, and $Rm(t)$ is measured market return index. $\beta(i)$ and $\sigma(i)^2$ represent the estimates of market beta and the variance of the non-zero observed returns, respectively.⁴ $R0$ denotes the zero-return region. The parameters, $\alpha_1(i)$, $\alpha_2(i)$, $\beta(i)$, and $\sigma(i)$ are solved by maximizing the likelihood function in equation (4). The estimate of interest is $\alpha_2(i) - \alpha_1(i)$. This difference between $\alpha_1(i)$ and $\alpha_2(i)$ is the implied round trip transaction costs, i.e. LDV estimate.

LDV estimate is more conservative than using the sum of spread and commissions (S+C). In Lesmond, Ogden, and Trzcinka (1999), LDV estimate is at least 30% lower than the sum of the quoted spread and commission regardless of firm size. For robustness, we also calculate Roll's spread and quoted spread for year 1995.⁵ We find the commission for stocks trading in 1995 using the commission schedule in Lesmond, Schill, and Zhou (2004, pp. 361). There are two reasons for using the same schedule. First, our sample universe is the same as theirs. Second, their schedule is valid for years from 1994 to 1997, which includes 1995 for which we conduct our robustness check. Consistent with their findings, we observe that the LDV estimate is at least 40% lower than quoted spreads plus commission for year 1995. The detailed results and the commission schedule are in Appendix A.

We use daily return data from CRSP to estimate the LOT measure of transaction costs. Because buying and holding stocks are ex-ante decisions, we calculate the LDV estimate for year $t-1$. By maximizing the likelihood function in equation (4), we estimate

⁴ We use the CRSP equally-weighted market return as the market index.

⁵ The results after controlling for transaction costs in this version are based only on the LDV estimate. We calculate the quoted bid-ask spread, commission and Roll's spreads for year 1995 to check the robustness of the LDV estimate. In future, we plan to report results on all these different measures of transaction costs.

the round trip transaction costs for every stock in the book-to-market portfolios from year 1973 to 2004.⁶

Now that we have our different measures of transaction costs, in the following section, we estimate the value premium with and without controlling for transaction costs.

5. Estimating the value premium and transaction costs in implementing value strategy

In this paper, we follow the different ways of constructing the value and growth portfolios. For this purpose, we employ different mechanisms to sort on book-to-market ratios as in LSV (1994) and La Porta et al. (1997), and as in Fama and French (1993, 2006). The calculation of book-to-market ratio follows the methods in Fama and French (1993) and as described on Kenneth French's website. Specifically, book-to-market ratio is the book value of stock equity at the end of fiscal year $t-1$ divided by the market value of equity at December of year $t-1$. We implement a one-way sort to obtain 10 book-to-market deciles as in LSV (1994) and a two-way sort on size and book-to-market to obtain portfolios as in Fama and French (1993, 2006). Further, to account for the impact of liquidity (Liu (2006)), we also perform two-way sort on liquidity and book-to-market. We describe below in detail how we form the different types of portfolios and estimate the associated value premium.

5.1. Sorts on book-to-market ratio as in LSV (1994) and La Porta et al. (1997)

⁶ We omit any estimates that are greater than 100%.

Following LSV (1994) and La Porta et al. (1997), we sort stocks into ten deciles based on book-to-market ratio (BM). Equally weighted portfolios are formed in June of each year t using the BM classification from December of year $t-1$. The value portfolio consists of stocks in the highest decile (BM10) and the growth portfolio consists of stocks in the lowest decile (BM1). As we report buy-and-hold returns for five years, we exclude firms with less than five years history in COMPUSTAT for this procedure of portfolio formation. Annual buy-and-hold returns are reported for five years after formation with year 1 beginning in July of year 0 and ending in June of year +1, year 2 beginning in July of year +1 and ending in June of year +2, and so on. If a stock has missing returns for any month in a year, we replace that month's return by the equally-weighted return on the remaining stocks in the portfolio. If the stock with missing returns in year t does not have any return data for the following year, we remove the stock from the portfolio for the following years.

Before proceeding further, we show that both the value and growth stocks as classified using LSV (1994) and La Porta et al. (1997) methodology exhibit a significant number of zero-return days suggesting that trading these stocks involves substantial transaction costs. Recall that the investors trade only if the value of accumulated information exceeds the marginal costs of trading. If these costs are sizable, new information must accumulate longer before investors engage in trading. Therefore, frequency of the zero-return days can be a proxy for the length of information accumulation.

We use the ten single-sorted BM portfolios as an example. Figures 1 and 2 show that value portfolio indeed has more zero-return days than growth portfolio. In addition to the

frequency of zero-return days for value and growth portfolios, we also show the same frequency for the BM decile 4 and BM decile 7 portfolios for the sake of comparison. Figure 1 presents two interesting patterns. First, it shows that the frequency of zero return days is particularly high for the value portfolio. More than 30% of the daily return values are exactly zero. The growth portfolio has only around 17% daily returns at zero. Second, it shows that the variation of nonzero returns is greater in value portfolio than in growth portfolio. Value portfolio exhibits high frequency of zero returns, low frequency of small magnitude returns, and high frequency of large magnitude returns. We believe that sizable transaction costs associated with value stocks may have caused the prices for value stocks to be stickier than those for growth stocks. In other words, market takes more time to incorporate information into prices for values stocks than for growth stocks. Figure 2 shows that the period from 1994 to 2003 has fewer zero-return days compared to the 1984-1993 period. Zero return frequency decreases from 43% to 21% for value stocks and from 26% to 10% for growth stocks. This decline is consistent with the reduction in the trading costs during the recent period. Overall, the patterns in Figures 1 and 2 indicate significant transaction costs involved in trading value and growth stocks, with the costs being much greater for value stocks. We show more formally how the transaction costs can explain the value premium later in this section.

Continuing with the construction of the value and growth portfolios, in order to control for size effect, we use the method of LSV (1994) to adjust portfolio returns for size. First, we classify stocks in our sample into size deciles based on the stocks' market capitalization at the end of December of year $t-1$. Second, we replace every stock's return in each year with an annual buy-and-hold return on an equally-weighted portfolio of all

stocks in its size decile for that year. Third, we equally weight these returns across all stocks in the original BM portfolios to get the size benchmark return. Finally, the annual size-adjusted return is then computed as the return on the BM portfolio minus the size benchmark return for that year.

We calculate the annual value premium as the difference of the annual buy-and-hold return of value portfolio and that of the growth portfolio. Table 1 presents the value premium for year $t+1$ to year $t+5$. We report the results for the annual raw returns and the size-adjusted returns in Panels A and B respectively. Panel A shows a decreasing pattern in the value premium following the portfolio formation in year t — from 14.2% in year $t+1$ to 7.9% in year $t+5$. The average annual value premium across the five years after the portfolio formation is 10.3%. Further, the value premium is statistically significant for each of the five years at the 5% level or better (see last column of Panel A). Results in Panel B for size-adjusted average return differences between top and bottom BM deciles (or value premium) are smaller than the raw return results in Panel A. For example, for year $t+3$, the size-adjusted return average difference in Panel B is 7% (t-stat=2.07) versus 9.8% (t-stat=2.86) in Panel A. Furthermore, average size-adjusted return differences in Panel B are statistically significant for only three years. This result is different from the findings in La Porta et al. (1997), where they find that the average differences between size-adjusted value and growth portfolio returns are statistically significant for all the five years. To examine the reasons for this discrepancy, we divide our sample period into three equal sub periods, 1974-1983, 1984-1993, and 1994-2003. We find that the persistence of value premium in previous studies is largely driven by the 1974-1983 subperiod (See Table 2).

The results from Table 2 are quite informative and interesting. The persistence of value premium decreased from five years in 1970s to only one year in the last decade (1994-2003) of our sample. We conjecture that one possible explanation for the lack of persistence in the value premium during the third sub period is that the transaction costs have decreased dramatically from 1974 to 2003. Hence, the additional required expected return to compensate higher transaction costs of value portfolio is much lower. We provide evidence to support this explanation in later sections.⁷

5.2. Sorts on size and book-to-market (Fama and French 1993, 2006)

Using double sorts on size and book-to-market, Fama and French (2006) find that value premium exists from 1926 to 2005 and that it is not driven by small firms. To account for size effect more explicitly, we also use double sorts to form value and growth portfolios. To check the profitability of value premium for different sorting strategies, we form 25 portfolios based on size and book-to-market quintiles and also construct 6 portfolios based on two size groups and 3 book-to-market groups.

At the end of each June from 1974 to 2005, we form 25 value-weighted portfolios as the intersection of independent sorts of NYSE, AMEX, and NASDAQ stocks into five size groups and five book-to-market groups. We use NYSE market cap and book-to-market quintile breakpoints to classify the stocks into five groups. The method of using NYSE breakpoints is common (see Fama and French (1992), Brav, Geczy, and Gompers (2000) for example) to avoid the clustering of NASDAQ stocks in portfolios with smaller

⁷ Table 2 Panels C and D show the annual returns and size-adjusted returns for period 1984-1993. The average differences of size-adjusted returns for year $t+1$ and $t+2$ — 10.7% and 11.3% are higher than those for the raw returns — 9.4% and 11.0%. This result is consistent with the weakening of size effect after it was discovered in 1980s as documented in previous studies (Horowitz, Loughran, and Savin (2000), Schwert (2003)).

size or higher book-to-market values. Size for a stock in year t is measured by the market capitalization at the end of June, which is calculated as the product of the closing price of the stock and the number of shares outstanding at the end of June of year t . As in Fama and French (1992, 2006), book equity is for the fiscal year ending in year $t-1$ and market equity is the market capitalization at the end of December of year t . Table 3 summarizes the characteristics of the 25 size-BM portfolios from 1974 to 2005. On average, the smallest size quintile contains more than half the total number of NYSE, AMEX, and NASDAQ stocks (2,212 out of 3,806) (see Panel A of Table 3). Panel B of Table 3 shows value-weighted average annual returns for the 25 portfolios. Consistent with Fama and French (1993 and 2006), within each BM quintile with the exception of lowest BM quintiles, larger is the size, lower are the returns. Within a size decile, returns are monotonically increasing with BM. For robustness, we estimate the value premium for the 25 portfolios in two different ways. The first estimate is based on the strategy of buying stocks in the highest BM quintile, H (value stocks) and shorting stocks in the lowest BM quintile, L (growth stocks), represented by H-L in Table 3 Panels B and C. The second estimate of the value premium follows the methodology in Fama and French (2006). The value premium for a size quintile is the difference between the average return on the two highest BM portfolios and the average return on the two lowest BM portfolios of the size quintile. Four portfolios are used to estimate value premium to mitigate the under-diversification problem of some portfolios. We also present the second estimate of value premium, noted as H45-L12, in Panel B of Table 3. All the value premiums for H-L and H45-L12 strategies are positive and significant except for the largest size quintile.⁸

⁸ The insignificant of value premium for the largest size quintile is merely a book-to-market effect. As shown in Fama and French (2006), if the value portfolios are classified on Earnings to Price (EP) ratio, then

Similar to Fama and French (2006), we find that the value premium decreases with increase in size.

Panel C of Table 3 shows the average annual LOT measure of transaction costs of the 25 size and BM portfolios. The average transaction costs of implementing H-L value strategy for the 25 size/BM portfolios range from 9.2% in the smallest size quintile to 0.9% of the largest size quintile (see column labeled as H-L). H-L strategy involves the roundtrip costs of buying and selling value and growth stocks. So the transaction costs for H-L strategy is the sum of LDV estimates of the high BM and low BM portfolios. The results are similar if we use H45-L12 instead of H-L.

Next, we form six portfolios based on size and BM. For this purpose, we independently sort portfolios into two size groups (S, B), using NYSE median size as the breakpoint and three BM groups (V, N, G), using NYSE BM as the breakpoints. G group contains all stocks in the bottom 30% of NYSE BM, N portfolio has all stocks in the middle 40% of NYSE BM, and V group contains all stocks in the high 30% of NYSE BM. The value premium, VMG, is the simple average of the returns on the two value portfolios minus the average of the returns on the two growth portfolios: $VMG = (VB+VS)/2 - (GB+GS)/2$. The other value premiums are calculated as: $VMGS = SV - SG$, $VMGB = BV - BG$. Panels A and B of Table 4 present the value-weighted annual returns for the six portfolios and the different value premiums. The value premiums are positive and statistically significant for VMG, VMGS and VMGB strategies. Panels C and D provide the estimate of the average annual transaction costs for the six size-BM portfolios and for the long-short portfolios to execute the value strategy. From Panel C,

the value premium will be positive and statistically significant even for the largest size quintile. In future, we plan to implement EP as an alternative way of classifying value and growth stocks.

we observe that the average transaction costs are higher for value portfolios compared to growth portfolios after controlling for size — 2.6% for small-value (SV) compared to 2.2% for small-growth (SG), and 0.7% for big-value (BV) compared to 0.4% for big-growth portfolio. Panel D of Table 4 provides a further confirmation of earlier results in Panel C of Table 3. We continue to observe significant roundtrip transaction costs of trading long-short portfolio for implementing value strategy. These costs are 2.9% for long all value stocks and short all growth stocks (VMG), 4.8% for long small value stocks and short small growth stocks (VMGS), and 1.0% for long large value and short large growth stocks.

Until now, we control for size to estimate the value premium and transaction costs. For robustness, we next examine if the value premium is driven by differences in liquidity.

5.3. Sorts on book-to-market and Liquidity

If value stocks are less liquid than growth stocks, then the book-to-market effect might be merely a liquidity effect. To examine whether value premium is driven by differences in liquidity, we double sort stocks into 25 portfolios based on quintiles of book-to-market and liquidity. If the value premium is due to variation in liquidity, we should not observe the existence of value premium within the same liquidity quintile. To form portfolios of year t , we first independently sort our universe of stocks into liquidity quintiles and BM quintiles based on the liquidity and BM information at December of year $t-1$. Then 25 liquidity-BM portfolios are formed as the intersection of the two independent sorts. For robustness, we use two different liquidity measures to classify our

portfolios. First one is the commonly used Amivest measure of liquidity as in Amihud (2002):

$$L_{i,y} = \frac{1}{T_y} \sum_{t=1}^{T_y} \sqrt{\frac{Vol(i,t,y)}{|r(i,t,y)|}} \quad (5)$$

where $Vol(i,t,y)$ and $r(i,t,y)$ are, respectively, stock i 's dollar volume (in millions) and return on day t in year y . T_y is the number of non-zero return trading days. As suggested by Hasbrouck (2006), we take the square root of $Vol(i,t,y) / |r(i,t,y)|$ to mitigate the effects of extreme values in the distribution of $L_{i,y}$.

One limitation of the Amivest measure is it is not defined when the stock return is zero. Liu (2006) obviates this limitation by proposing an alternative measure, which is essentially the standardized turnover-adjusted number of zero daily trading volumes. Liu's measure of liquidity for stock i in year t is calculated as:

$$LM12_{i,t} = \text{Number of zero daily volumes in prior 12 months} + \frac{1/(12\text{-month turnover})}{Deflator} \times \frac{252}{NoTD} \quad (6)$$

where 12-month turnover is calculated as the sum of daily turnover over the prior 12 months. Daily turnover is the ratio of the number of shares traded on a day to the number of shares outstanding at the end of the day. $NoTD$ is the total number of trading days of the market over the prior 12 months. Because the number of trading days varies from one month to another, the factor $252/NoTD$ standardizes the number of trading days to 252 days. Following Liu (2006), we choose a deflator of 11000 for annual liquidity estimate.⁹

⁹ Deflator is chosen such that: $0 < \frac{1/(12\text{-month turnover})}{Deflator} < 1$.

Table 5 (Table 6) presents the summary characteristics for the 25 portfolios formed by sorting on book-to-market and Amivest (Liu) liquidity measure. The portfolio annual returns are value-weighted returns based on December market cap of year $t-1$. Panel B of Table 5 and 6 report the average annual returns for the 25 portfolios. We observe that within each liquidity quintile, portfolio returns are monotonically increasing with BM. However, within each BM quintile, portfolio returns do not always decrease with liquidity. This finding suggests that even after controlling for liquidity, we observe a significant value premium. The value premiums H-L and H45-L12 are defined the same way as in Fama and French 25 portfolios. In most cases, the value premiums are positive and statistically significant. For Amivest liquidity measure, the value premium ranges from 2.5% to 6.3% annually (see columns H-L and H45-L12 of Table 5 Panel B). For Liu liquidity measure, the value premium ranges from 3.1% to 7.5% annually (see columns H-L and H45-L12 of Table 6 Panel B).

Panel C of Table 6 shows the average annual LOT measure of transaction costs for different liquidity-BM portfolios and long-short portfolios (H-L and H45-L12) for implementing value strategy. The average annual transaction costs are usually higher for the highest BM quintiles (value stocks) than for the lowest BM quintiles (growth stocks). For example, in Panel C of Table 6, for each liquidity quintile, the transaction costs are greater for high BM quintile compared to the low BM quintile. Further, the average transaction costs of implementing H-L value strategy for the 25 liquidity-BM portfolios range from 1.5% in the highest liquidity quintile to 4.3% in the lowest liquidity quintile. Each of these roundtrip transaction costs is statistically significant at the 1% level. The

results are similar for the alternative way of defining value strategy of buying the two highest BM quintiles and selling the two lowest BM quintiles (H45-L12).

Having provided evidence on the existence of value premium in absence of transaction costs, and shown that implementing value strategy involves non-trivial transaction costs, the next logical step is to compute the value premium after adjusting for transaction costs, which we do in the following section.

6. The profitability of value strategy

Before we examine whether value premium exists after adjusting for transaction costs, we first briefly summarize different value strategies described in the previous section. We have described so far three variations of value strategies. First, based on LSV (1994), a trading strategy of buying stocks in the highest BM decile and selling stocks in the lowest BM decile and holding the portfolio for one to five years will generate value premium of about 10% per year. We refer to this strategy as the LSV value strategy. Second type of value strategy is to construct the HML factor mimicking portfolio of Fama and French (1993) using double sorts on size and book-to-market, while dividing the stock universe into two (S and B) and three (V, N, and G) groups along these two dimensions. Particularly, to obtain the value premium on the mimicking portfolio, we need to buy stocks in the two value portfolios and short the stocks in the two growth portfolios. In this case, the value premium is given by $VMG=(SV+BV)/2-(SG+BG)/2$, where SV represents returns on small value portfolio, BV is big value portfolio, SG is small growth portfolio, and BG is big growth portfolio. For robustness, we also study the profitability of the value strategies (H-L, H45-L12) based on 25 size-BM portfolios using

size and BM quintiles. We group these two variations of sorting procedures for implementing value strategy together and refer to it as FF value strategy. The third variation of value strategy is based on the 25 liquidity-BM portfolios. We obtain the value premium within a liquidity quintile by shorting stocks in the two lowest BM quintiles and buying stocks in the two highest BM quintiles. We refer to this type of value strategy as liquidity-adjusted value strategy. Table 7 summarizes these different variations of value strategies.

6.1. Profitability of LSV strategy.

Because LSV (1994) equally weight stocks in their portfolio construction, we calculate average transaction costs for portfolios using equal weighting. We plot the LOT measure of transaction costs for value and growth stocks each year during our sample period in Figure 3. For the sake of comparison with value and growth portfolios, we also plot the transaction costs for the BM deciles 4 and 7. Figure 3 clearly shows a sharp decline in transaction costs beginning in 1991. The growth, BM4, and BM7 portfolios exhibit very similar pattern of transaction costs. However, the value portfolio's average transaction costs are much higher throughout our sample period. Table 8 compares the transaction costs between value and growth stocks year by year. The results are striking. For each and every year, the transaction costs for value stocks are higher than those for growth stocks with the difference being greater than 10% for a large number of years. The average transaction cost of value stocks across the 30-year period is 8.9% compared to 3.7% for the growth stocks (see last row of Table 8). Given this large average roundtrip transaction cost of 12.6% ($= 8.9\% + 3.7\%$), it seems that the value premium of

around 10% cannot be achieved in practice. The average transaction costs are even higher during the first two sub-periods: 1973 to 1982 and 1983 to 1992. Overall, based on the evidence in Table 8, after accounting for transaction cost, the value premiums reported in LSV (1994) and La Porta et al. (1997) disappear.

6.2. Profitability of FF Strategy

Panels A and B of Table 9 present the profitability of FF value strategies. As we can see from Panel A, none of the value premiums within a size quintile is statistically significant. The average value premium for H45-L12 is also not statistically significant.¹⁰ In Panel B, all the three value premiums (VMG, VMGS, VMGB) are again not statistically significant. Overall, these findings suggest that value strategies are no longer profitable after adjusting for transaction costs.

6.3. Profitability of liquidity-adjusted value strategy

Table 9, Panels C and D report the results for profitability of liquidity-adjusted value strategy. Regardless of the liquidity measure used, the value premiums based on liquidity and BM sorted portfolios are no longer significant for all liquidity quintiles except for one group (the 4th group in Panel C Table 9) under Amivest measure. These results suggest that even after accounting for variation in liquidity, value premium disappears when we adjust for transaction costs.

Overall, the results in this section provide strong evidence that the value premium ceases to exist after controlling for transaction costs.

¹⁰ The average value premium for H-L still appears to be significant with a t-value of 3.07, but this might be due to the fact that some portfolios of the highest BM group have fewer firms and are not well diversified. As a result, part of the value premium might be a compensation for non-diversification risk.

7. Conclusion

In his survey paper of asset pricing, Campbell (2000) states that “we have only a poor understanding of how transaction costs can affect asset prices”. This paper intends to provide further insights on the subject of transaction costs and stock returns.

By comparing the transaction costs of value stocks and growth stocks, it finds that on average, value stocks have higher transaction costs than growth stocks and the value premium is not obtainable after controlling for transaction costs. There has been a huge decline in the transaction costs in the late nineties, perhaps due to the market reforms during this period. The findings of this paper can potentially explain why investors may not be able to arbitrage away the value premium and provide evidence for modified efficient market hypothesis of Fama (1991). Furthermore, our results raise questions about the attainability of value premium in some of the international markets (e.g., Arshanapalli et al. (1998), Fama and French (1998)) where transaction costs are likely to be much higher than those in the US.

Appendix A:

Table A.1: Commission Schedule used by Lesmond, Schill, and Zhou (2004).

| Transaction amount | Commission |
|-------------------------|-----------------------------------|
| \$0 – \$2,500 | \$29 + 1.70% of Principal Amount |
| \$2,500.01 – \$6,250 | \$55 + 0.66% of Principal Amount |
| \$6,250.01 – \$20,000 | \$75 + 0.34% of Principal Amount |
| \$20,000.01 – \$50,000 | \$99 + 0.22% of Principal Amount |
| \$50,000.01 – \$500,000 | \$154 + 0.11% of Principal Amount |
| \$500,000 | \$254 + 0.09% of Principal Amount |

Table A.2: Comparisons of LDV estimate and the sum of spread and commissions (S+C) (Year 1995)

| | Growth | | | Value |
|-----------------|--------|-------|-------|-------|
| | 1 | 4 | 7 | 10 |
| Roll's Spread | 0.035 | 0.032 | 0.033 | 0.055 |
| RS + Commission | 0.075 | 0.084 | 0.096 | 0.147 |
| Quoted Spread | 0.021 | 0.017 | 0.024 | 0.045 |
| QS + Commission | 0.061 | 0.069 | 0.088 | 0.137 |
| LDV | 0.035 | 0.023 | 0.036 | 0.070 |

References

- Ali, Ashiq, Lee-Seok Hwang, and Mark A. Tormbley, 2003, Arbitrage risk and the book-to-market anomaly, *Journal of Financial Economics* 69, 355-373.
- Amihud, Yakov, 2002, Illiquidity and Stock Returns: Cross-Section and Time-Series Effects, *Journal of Financial Markets* 2, 31-56.
- Amihud, Yakov and Haim Mendelson, 1986, Asset pricing and the bid-ask spread, *Journal of Financial Economics* 17, 223-249.
- Arshanapalli, Bala, T. Daniel Coggin, and John Doukas, 1998, Multifactor asset pricing analysis of international value investment strategies, *Journal of Portfolio Management* 24, 10-23.
- Bhardwaj, R., and L. Brooks, 1992, The January anomaly: Effects of low share price, transaction costs, and bid-asked bias, *Journal of Finance* 47, 552-576.
- Bhushan, R., 1994, An informational efficiency perspective on the post-earnings announcement drift, *Journal of Accounting and Economics* 18, 45-66.
- Brav, Alon, Christopher Geczy, and Paul A. Gompers, 2000, Is the abnormal return following equity issuances anomalous?, *Journal of Financial Economics* 56, 209-249.
- Brennan, Michael J., and Subrahmanyam, A., 1996, Market microstructure and asset pricing: On the compensation for illiquidity in stock returns, *Journal of Financial Economics* 41, 441-464.
- Campbell, John Y., 2000, Asset pricing at the Millennium, *Journal of Finance* 55, 1515-1567.
- Chan, K. C., and Nai-Fu Chen, 1991, Structural and Return Characteristics of Small and Large Firms, *Journal of Finance* 46, 1467-1484.
- Cohen, Randolph B., Christopher Polk, and Tuomo Vuolteenaho, 2003, The Value Spread, *Journal of Finance* 58, 609-641.
- Conrad, Jennifer, Michael Cooper, and Gautam Kaul, 2003, Value versus Glamour, *Journal of Finance* 58, 1969-1995.
- Constantinides, George, 1986, Capital Market Equilibrium with Transaction Costs, *Journal of Political Economy* 94, 842-862.

- Davis, James L., Eugene F. Fama, and Kenneth R. French, 2000, Characteristics, covariances, and average returns: 1929-1997, *Journal of Finance* 55, 389-406.
- Dimson, Elroy, Stefan Nagel, and Garrett Quigley, 2003, Capturing the value premium in the United Kingdom, *Financial Analysts Journal* 59, 35-45.
- Doukas, John A., Chansog (Francis) Kim, and Christos Pantzalis, 2002, A Test of the Errors-in-Expectations Explanation of the Value/Glamour Stock Returns Performance: Evidence from Analysts' Forecasts, *Journal of Finance* 57, 2143-2165.
- Doukas, John A., Chansog (Francis) Kim, and Christos Pantzalis, 2004, Divergent Opinions and the Performance of Value Stocks, *Financial Analysts Journal* 60, 50-64.
- Fama, Eugene F., 1991, Efficient Capital Markets: II, *Journal of Finance* 46, 1575-1617.
- Fama, Eugene F., and Kenenth R. French, 1992, The Cross-Section of Expected Stock Returns, *Journal of Finance* 47, 427-465.
- Fama, Eugene F., and Kenenth R. French, 1993, Common Risk Factors in the Returns on Stocks and Bonds, *Journal of Financial Economics* 33, 3-56.
- Fama, Eugene F., and Kenenth R. French, 1996, Multifactor Explanations of Asset pricing Anomalies, *Journal of Finance* 51, 55-84.
- Fama, Eugene F., and Kenenth R. French, 1998, Value versus growth: The international evidence, *Journal of Finance* 53, 1975-1999.
- Fama, Eugene F., and Kenenth R. French, 2006, The Value Premium and the CAPM, *Journal of Finance* 61, 2163-2185.
- Griffin John M., and Michael L. Lemmon, 2002, Book-to-Market Equity, Distress Risk, and Stock Returns, *Journal of Finance* 57, 2317-2336.
- Hasbrouck, Joel, 2006, Trading costs and returns for US equities: Estimating effective costs from daily data, Working Paper, New York University.
- Horowitz, Joel L., Tim Loughran and N. E. Savin, 2000, The disappearing size effect, *Research in Economics* 54, Issue 1, 83-100.
- Houge, Todd, and Tim Loughran, 2006, Do Investors Capture the Value Premium?, *Financial Management* 35, 5-19.
- Kothari S.P., J. Shanken, and R.G. Sloan, 1995, Another look at the cross-section of expected stock returns, *Journal of Finance* 50, 185-224.

- Lakonishok, Josef, Andrei Shleifer, and Robert Vishny, 1994, Contrarian Investment, Extrapolation, and Risk, *Journal of Finance* 49, 1541-1578.
- La Porta, J. Lakonishok, A. Shleifer, R. Vishny, 1997, Good News for Value Stocks: Further Evidence on Market Efficiency, *Journal of Finance* 52, No. 2, 859-874.
- Lee, Charles M.C., and Mark J. Ready, 1991, Inferring trade direction from intraday data, *Journal of Finance* 46, 733-746.
- Lesmond, David A., Joseph P. Ogden, and Charles Trzcinka, 1999, A new estimate of transaction costs, *The Review of Financial Studies* 12, 1113-1141.
- Lesmond, David A., Michael J. Schill, and Chunsheng Zhou, 2004, The illusory nature of momentum profits, *Journal of Financial Economics* 71, 349-380.
- Liu, Weimin, 2006, A liquidity-augmented capital asset pricing model, *Journal of Financial Economics* 82, 631-671.
- Loughran, Tim, 1997, Book-to-market across firm size, exchange, and seasonality: Is there an effect?, *Journal of Financial and Quantitative Analysis* 32, 249-268.
- Mohanram, Partha S., 2004, Separating Winners from Losers among Low Book-to-Market Stocks using Financial Statements Analysis, Working Paper, Columbia Business School.
- Nagel, Stefan, 2005, Short sales, institutional investors, and the book-to-market effect, *Journal of Financial Economics* 78, 277-309.
- Phalippou, Ludovic, 2007, Institutional Ownership and the Value Premium, Working Paper, University of Amsterdam.
- Pontiff, J., 1996, Costly arbitrage: evidence from closed-end funds, *Quarterly Journal of Economics* 111, 1135-1152.
- Porta Rafael La, 1996, Expectations and the Cross-Section of Stock Returns, *Journal of Finance* 51, 1715-1741.
- Porta Rafael La, Josef Lakonishok, Andrei Shleifer, and Robert Vishny, 1997, Good News for Value Stocks: Further Evidence on Market Efficiency, *Journal of Finance* 52, 859-874.
- Piotroski, Joseph D., 2000, Value Investing: The Use of Historical Financial Statement Information to Separate Winners from Losers, *Journal of Accounting Research* 38, 1-41.

- Reinganum, M., 1983, The anomalous stock market behavior of small firms in January: Some empirical tests for tax-loss selling effects, *Journal of Financial Economics* 12, 89-104.
- Roll, Richard, 1984, A Simple Implicit Measure of the Effective Bid-Ask Spread in an Efficient Market, *Journal of Finance* 39, 1127-1139.
- Rosenberg, Barr, Kenneth Reid, and Ronald Lanstein, 1985, Persuasive Evidence of Market Inefficiency, *Journal of Portfolio Management* 11, 9-17.
- Rozeff, Michael S., and Mir A. Zaman, 1998, Overreaction and Insider Trading: Evidence from Growth and Value Portfolios, *Journal of Finance* 53, 701-716.
- Schwert, William G., 2003, Anomalies and Market Efficiency, eds. George Constantinides, Milton Harris, and Rene M. Stulz, *Handbook of the Economics of Finance*, North-Holland, 937-972.
- Skinner, D. and R. Sloan, 2002, Earnings surprises, growth expectations, and stock returns, or, don't let an earnings torpedo sink your portfolio, *Review of Accounting Studies* 7, 289-312.
- Stoll, Hans R. and Robert E. Whaley, 1983, Transaction Costs and The Small Firm Effect, *Journal of Financial Economics* 12, 57-80.
- Vayanos, Dimitri, 2003, Transaction Costs and Asset Prices: A Dynamic Equilibrium Model, *The Review of Financial Studies* 11, 1-58.

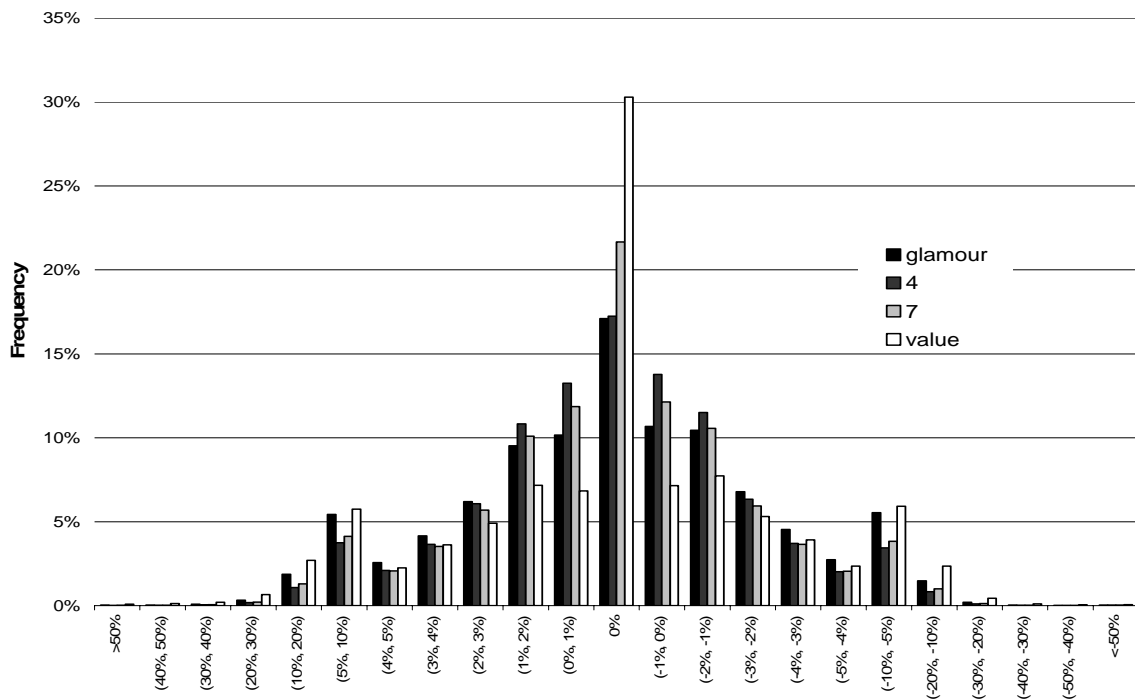


Figure 1. Histogram of mean frequency daily returns for 1973 to 2004. 4 and 7 stand for the fourth and seventh decile portfolios of the BM deciles respectively. The darkest bars stand for glamour stocks and the white bars stand for value stocks.

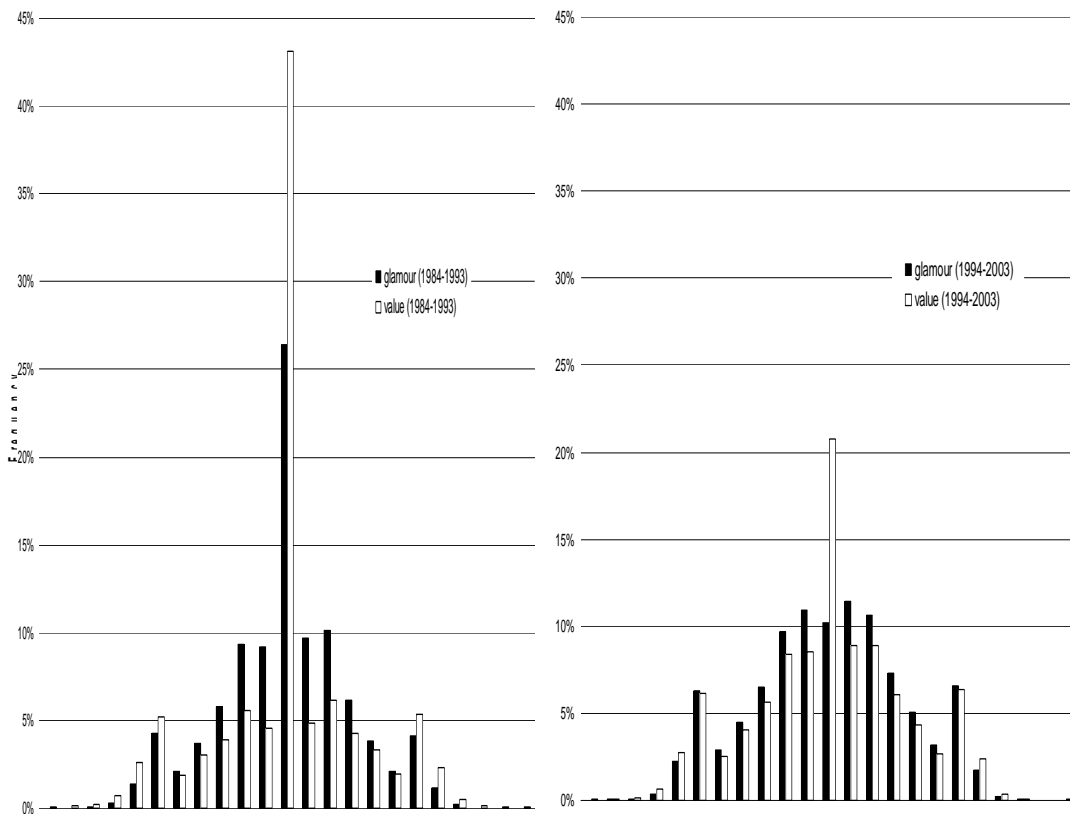


Figure 2 Histogram of mean frequency zero daily return for 1984-1993 and 1994 -2003.

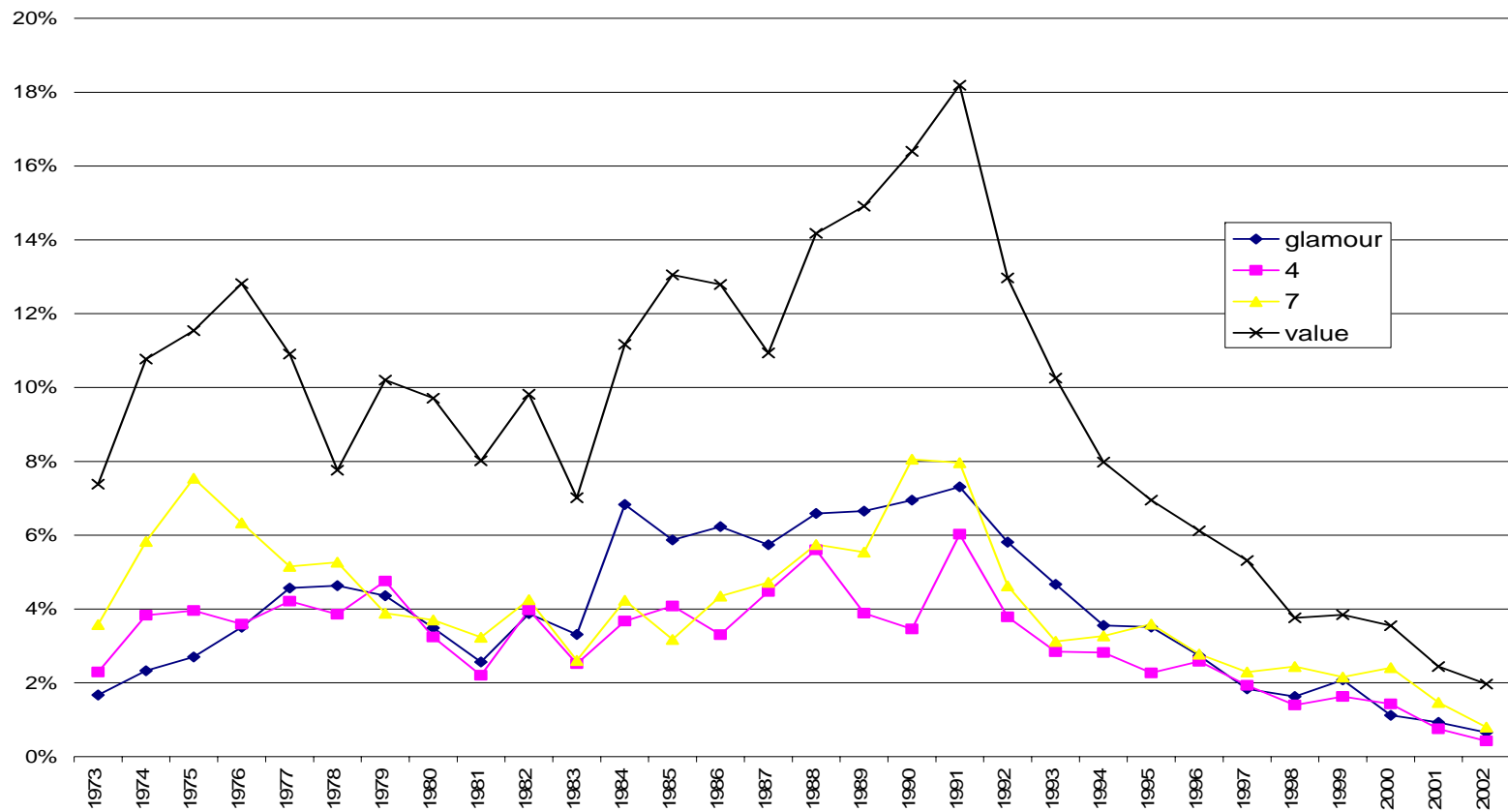


Figure 3. LOT measure of transaction costs during our sample period (1973-2004)

4 and 7 represent for the fourth and seventh decile portfolios of the BM deciles respectively. BM is the ratio of book equity to market value of equity. Market value of equity is calculated as the price multiplied by shares outstanding. At the end of each December between 1973 and 2004, 10 decile portfolios are formed in ascending order of BM. BM rank 1 represents value portfolio and 10 represents glamour (or growth) portfolio. LOT measure of transaction costs is estimated by maximizing the likelihood function in equation 4 in the paper.

Table 1: Annual Buy-and-Hold Returns on 10 Portfolios Classified by Book-to-Market Ratios, 1974-2005

BM is the ratio of book equity to market value of equity. Market value of equity is calculated as the price multiplied by shares outstanding. At the end of each December between 1973 and 2004, 10 decile portfolios are formed in ascending order of BM. BM rank 1 represents value portfolio and 10 represents glamour (or growth) portfolio. The returns of the portfolios are measured since July of the year following the portfolio formation year. The returns presented in the table are the averages of annual returns over the entire sample period. YR1-YR5 is the average return in year 1-5 after portfolio formation. AR is the average annual return over YR1 to YR5. Size-adjusted annual returns are calculated by raw annual returns less the size benchmark portfolio returns.

| Glamour | | | | | | | | | | Value | Mean Difference | t-Stat for Mean |
|---------------------------------------|--------|--------|--------|--------|--------|-------|-------|-------|-------|-------|-----------------|-----------------|
| BM | 1 | 2 | 3 | 4 | 5 | 6 | 7 | 8 | 9 | 10 | 10-1 | Difference 10-1 |
| Panel A: Annual Returns | | | | | | | | | | | | |
| YR1 | 0.117 | 0.163 | 0.186 | 0.196 | 0.210 | 0.220 | 0.225 | 0.243 | 0.265 | 0.259 | 0.142 | 4.36*** |
| YR2 | 0.128 | 0.172 | 0.189 | 0.195 | 0.206 | 0.212 | 0.233 | 0.240 | 0.248 | 0.250 | 0.123 | 3.40*** |
| YR3 | 0.150 | 0.164 | 0.188 | 0.186 | 0.194 | 0.222 | 0.228 | 0.221 | 0.237 | 0.247 | 0.098 | 2.86*** |
| YR4 | 0.158 | 0.172 | 0.181 | 0.187 | 0.196 | 0.198 | 0.216 | 0.232 | 0.231 | 0.234 | 0.076 | 2.12** |
| YR5 | 0.152 | 0.175 | 0.180 | 0.173 | 0.181 | 0.200 | 0.232 | 0.224 | 0.236 | 0.230 | 0.079 | 2.36** |
| AR | 0.141 | 0.169 | 0.185 | 0.187 | 0.198 | 0.210 | 0.227 | 0.232 | 0.244 | 0.244 | 0.103 | |
| Panel B: Size-Adjusted Annual Returns | | | | | | | | | | | | |
| YR1 | -0.073 | -0.030 | -0.009 | -0.002 | 0.008 | 0.016 | 0.018 | 0.032 | 0.052 | 0.049 | 0.121 | 4.09*** |
| YR2 | -0.053 | -0.015 | 0.003 | 0.005 | 0.012 | 0.014 | 0.031 | 0.035 | 0.037 | 0.044 | 0.097 | 3.08*** |
| YR3 | -0.020 | -0.014 | 0.008 | 0.005 | 0.009 | 0.031 | 0.035 | 0.021 | 0.036 | 0.049 | 0.070 | 2.07** |
| YR4 | -0.016 | -0.006 | 0.002 | 0.004 | 0.011 | 0.008 | 0.019 | 0.033 | 0.026 | 0.035 | 0.051 | 0.92 |
| YR5 | -0.031 | -0.011 | -0.008 | -0.016 | -0.011 | 0.002 | 0.031 | 0.018 | 0.025 | 0.028 | 0.059 | 1.17 |
| AR | -0.039 | -0.015 | -0.001 | -0.001 | 0.006 | 0.014 | 0.027 | 0.028 | 0.035 | 0.041 | 0.080 | |

***: Statistically significant at 1% level ** : Statistically significant at 5% level * : Statistically significant at 10% level

Table 2: Annual Buy-and-Hold Returns on 10 Portfolios Classified by Book-to-Market Ratios, 1974-1983, 1984-1993, and 1994-2003

At the end of each December, decile portfolios are formed in ascending order of BM. The table reports the average returns five years after portfolio formation (YR1-YR5 from year t+1 to t+5). AR is the average annual return over YR1 to YR5. Size-adjusted returns are calculated as raw returns less the size benchmark portfolio returns.

| | Glamour | | | | | | | | | | Value | Mean Difference | t-Stat for Mean Difference |
|---|---------|--------|--------|--------|--------|--------|--------|--------|--------|--------|-------|-----------------|----------------------------|
| BM | 1 | 2 | 3 | 4 | 5 | 6 | 7 | 8 | 9 | 10 | 10-1 | 10-1 | |
| Panel A: Annual Returns (1974 – 1983) | | | | | | | | | | | | | |
| YR1 | 0.117 | 0.137 | 0.175 | 0.165 | 0.196 | 0.206 | 0.212 | 0.246 | 0.258 | 0.258 | 0.141 | 3.27*** | |
| YR2 | 0.174 | 0.216 | 0.237 | 0.248 | 0.272 | 0.271 | 0.302 | 0.313 | 0.333 | 0.334 | 0.159 | 2.81** | |
| YR3 | 0.187 | 0.210 | 0.258 | 0.247 | 0.260 | 0.311 | 0.288 | 0.333 | 0.358 | 0.341 | 0.154 | 3.30*** | |
| YR4 | 0.181 | 0.219 | 0.241 | 0.246 | 0.256 | 0.257 | 0.306 | 0.332 | 0.334 | 0.334 | 0.153 | 3.59*** | |
| YR5 | 0.160 | 0.210 | 0.221 | 0.207 | 0.232 | 0.254 | 0.284 | 0.269 | 0.299 | 0.302 | 0.143 | 2.59** | |
| AR | 0.164 | 0.198 | 0.226 | 0.223 | 0.243 | 0.260 | 0.278 | 0.298 | 0.316 | 0.314 | 0.150 | | |
| Panel B: Size-Adjusted Annual Returns (1974 – 1983) | | | | | | | | | | | | | |
| YR1 | -0.116 | -0.105 | -0.074 | -0.090 | -0.067 | -0.060 | -0.059 | -0.036 | -0.037 | -0.041 | 0.075 | 2.65** | |
| YR2 | -0.047 | -0.016 | 0.003 | 0.006 | 0.025 | 0.013 | 0.037 | 0.040 | 0.046 | 0.038 | 0.085 | 2.47** | |
| YR3 | -0.030 | -0.023 | 0.018 | 0.006 | 0.009 | 0.050 | 0.029 | 0.054 | 0.068 | 0.044 | 0.074 | 2.14** | |
| YR4 | -0.044 | -0.020 | -0.004 | -0.003 | 0.005 | -0.004 | 0.033 | 0.047 | 0.037 | 0.031 | 0.074 | 1.89* | |
| YR5 | -0.074 | -0.036 | -0.029 | -0.039 | -0.021 | -0.010 | 0.017 | -0.007 | 0.011 | 0.009 | 0.084 | 1.00 | |
| AR | -0.062 | -0.040 | -0.017 | -0.024 | -0.010 | -0.002 | 0.012 | 0.020 | 0.025 | 0.016 | 0.078 | | |
| Panel C: Annual Returns (1984-1993) | | | | | | | | | | | | | |
| YR1 | 0.080 | 0.113 | 0.125 | 0.145 | 0.161 | 0.164 | 0.163 | 0.178 | 0.194 | 0.174 | 0.094 | 2.26** | |
| YR2 | 0.082 | 0.142 | 0.136 | 0.143 | 0.147 | 0.157 | 0.177 | 0.170 | 0.169 | 0.192 | 0.110 | 2.29** | |
| YR3 | 0.087 | 0.072 | 0.121 | 0.109 | 0.116 | 0.129 | 0.141 | 0.104 | 0.115 | 0.175 | 0.089 | 1.76 | |
| YR4 | 0.079 | 0.091 | 0.103 | 0.100 | 0.137 | 0.108 | 0.119 | 0.121 | 0.113 | 0.136 | 0.058 | 1.11 | |
| YR5 | 0.123 | 0.118 | 0.123 | 0.135 | 0.129 | 0.146 | 0.149 | 0.135 | 0.143 | 0.141 | 0.018 | 0.24 | |
| AR | 0.090 | 0.107 | 0.122 | 0.126 | 0.138 | 0.141 | 0.150 | 0.142 | 0.147 | 0.164 | 0.074 | | |
| Panel D: Size-Adjusted Annual Returns (1984-1993) | | | | | | | | | | | | | |
| YR1 | -0.071 | -0.040 | -0.022 | -0.003 | 0.015 | 0.016 | 0.013 | 0.031 | 0.053 | 0.036 | 0.107 | 3.08** | |
| YR2 | -0.055 | 0.003 | 0.000 | 0.007 | 0.010 | 0.020 | 0.036 | 0.034 | 0.033 | 0.058 | 0.113 | 2.71** | |
| YR3 | -0.025 | -0.040 | 0.011 | -0.001 | 0.004 | 0.016 | 0.026 | -0.009 | 0.002 | 0.064 | 0.089 | 2.02* | |
| YR4 | -0.029 | -0.019 | -0.004 | -0.008 | 0.028 | -0.002 | 0.004 | 0.009 | -0.001 | 0.025 | 0.054 | 1.13 | |
| YR5 | -0.009 | -0.017 | -0.009 | 0.001 | -0.006 | 0.010 | 0.008 | -0.008 | -0.003 | 0.003 | 0.011 | 0.17 | |
| AR | -0.038 | -0.023 | -0.005 | -0.001 | 0.010 | 0.012 | 0.018 | 0.012 | 0.017 | 0.037 | 0.075 | | |

Table 2 (Continued)

| Glamour | | | | | | | | | | Value | Mean Difference | t-Stat for Mean Difference |
|---|--------|--------|--------|--------|--------|--------|--------|--------|-------|-------|-----------------|----------------------------|
| BM | 1 | 2 | 3 | 4 | 5 | 6 | 7 | 8 | 9 | 10 | 10-1 | 10-1 |
| Panel E: Annual Returns (1994– 2003) | | | | | | | | | | | | |
| YR1 | 0.117 | 0.137 | 0.175 | 0.165 | 0.196 | 0.206 | 0.212 | 0.246 | 0.258 | 0.258 | 0.141 | 2.08* |
| YR2 | 0.127 | 0.156 | 0.196 | 0.194 | 0.196 | 0.207 | 0.219 | 0.237 | 0.242 | 0.222 | 0.096 | 1.11 |
| YR3 | 0.163 | 0.191 | 0.171 | 0.187 | 0.192 | 0.208 | 0.238 | 0.204 | 0.215 | 0.212 | 0.049 | 0.66 |
| YR4 | 0.191 | 0.181 | 0.177 | 0.188 | 0.178 | 0.200 | 0.194 | 0.209 | 0.209 | 0.203 | 0.013 | 0.16 |
| YR5 | 0.161 | 0.176 | 0.174 | 0.162 | 0.162 | 0.178 | 0.230 | 0.232 | 0.230 | 0.212 | 0.051 | 1.03 |
| AR | 0.152 | 0.168 | 0.179 | 0.179 | 0.185 | 0.200 | 0.219 | 0.226 | 0.231 | 0.221 | 0.070 | |
| Panel F: Size-Adjusted Annual Returns (1994 – 2003) | | | | | | | | | | | | |
| YR1 | -0.067 | -0.047 | -0.013 | -0.026 | 0.001 | 0.008 | 0.011 | 0.042 | 0.055 | 0.065 | 0.132 | 1.86* |
| YR2 | -0.057 | -0.033 | 0.008 | 0.002 | 0.000 | 0.009 | 0.018 | 0.032 | 0.031 | 0.031 | 0.088 | 1.01 |
| YR3 | -0.016 | 0.005 | -0.017 | -0.003 | 0.000 | 0.010 | 0.036 | -0.003 | 0.012 | 0.023 | 0.039 | 1.29 |
| YR4 | 0.005 | -0.002 | -0.006 | 0.000 | -0.013 | 0.006 | -0.007 | 0.010 | 0.007 | 0.015 | 0.010 | 0.13 |
| YR5 | -0.021 | -0.007 | -0.011 | -0.027 | -0.029 | -0.017 | 0.031 | 0.030 | 0.025 | 0.025 | 0.046 | 0.91 |
| AR | -0.031 | -0.017 | -0.008 | -0.011 | -0.008 | 0.003 | 0.018 | 0.022 | 0.026 | 0.032 | 0.063 | |

***: Statistically significant at 1% level **: Statistically significant at 5% level *: Statistically significant at 10% level.

Table 3: Returns and Transaction Costs for 25 Portfolios Classified by Size and Book-to-Market Quintiles 1974-2005

At the end of each June from 1974 to 2004, we form 25 value-weighted portfolios as the intersection of independent sorts of NYSE, AMEX, and NASDAQ stocks into five size groups and five book-to-market groups. We use NYSE market cap and book-to-market quintile breakpoints to classify the stocks into five groups. Size for a stock in year t is measured by the market capitalization at the end of June, which is calculated as the closing price of the stock multiplied by the number of shares outstanding at the end of June of year t . Book equity in book-to-market is for the fiscal year ending in year $t-1$ and market equity is market cap at the end of December of year t . Panel B reports the value-weighted average annual returns for each portfolio. Panel C presents the average annual LOT measure of transaction costs for each portfolio. LOT measure is estimated by maximizing the likelihood function in equation 4 in the paper. H-L in Panel B is the value premium for a size group estimated from the time series of annual differences between the average returns for the highest BM quintile within a size quintile and the average returns for the lowest BM quintile in the same size quintile. H45-L12 in Panel B is the value premium for a size group estimated from the time series of annual differences between the average returns for the two highest BM quintiles within a size quintile and the average returns for the two lowest BM quintiles in the same size quintile. H-L in Panel C is the average transaction cost for implementing value strategy H-L and equals to the roundtrip transaction costs for the highest and lowest BM quintiles. H45-L12 in Panel C is the average transaction cost for implementing value strategy H45-L12 and equals to the average round trip transaction costs for the two highest and lowest BM quintiles within a size quintile.

Panel A: 25 Size/BM Portfolios - Number of Firms

| | Low BM | 2 | 3 | 4 | High BM | Sum |
|------------|--------|-----|-----|-----|---------|------|
| Small Size | 447 | 317 | 329 | 416 | 703 | 2212 |
| 2 | 139 | 117 | 120 | 108 | 81 | 564 |
| 3 | 113 | 90 | 85 | 69 | 45 | 402 |
| 4 | 101 | 78 | 65 | 55 | 35 | 334 |
| Big Size | 110 | 64 | 51 | 42 | 26 | 294 |
| Sum | 910 | 667 | 650 | 690 | 889 | 3806 |

Panel B: 25 Size/BM Portfolios - Average buy and hold annual returns

| | Low BM | 2 | 3 | 4 | High BM | H-L | t(H-L) | H45-L12 | t(H45-L12) |
|------------|--------|-------|-------|-------|---------|-------|--------|---------|------------|
| Small Size | 0.119 | 0.188 | 0.188 | 0.194 | 0.210 | 0.091 | 2.76 | 0.048 | 1.90 |
| 2 | 0.136 | 0.162 | 0.178 | 0.190 | 0.208 | 0.072 | 2.31 | 0.050 | 2.17 |
| 3 | 0.140 | 0.168 | 0.173 | 0.176 | 0.202 | 0.062 | 2.07 | 0.035 | 1.66 |
| 4 | 0.136 | 0.153 | 0.162 | 0.173 | 0.197 | 0.061 | 2.12 | 0.040 | 2.15 |
| Big Size | 0.122 | 0.141 | 0.145 | 0.146 | 0.154 | 0.032 | 0.97 | 0.018 | 0.86 |

Panel C: 25 Size/BM Portfolios- Average annual transaction costs

| | Low BM | 2 | 3 | 4 | High BM | H-L | t(H-L) | H45-L12 | t(H45-L12) |
|------------|--------|-------|-------|-------|---------|-------|--------|---------|------------|
| Small Size | 0.047 | 0.036 | 0.035 | 0.036 | 0.046 | 0.092 | 12.20 | 0.082 | 12.23 |
| 2 | 0.020 | 0.017 | 0.017 | 0.017 | 0.019 | 0.038 | 11.14 | 0.036 | 11.31 |
| 3 | 0.011 | 0.011 | 0.011 | 0.011 | 0.012 | 0.024 | 11.04 | 0.023 | 11.48 |
| 4 | 0.007 | 0.007 | 0.007 | 0.007 | 0.010 | 0.017 | 12.31 | 0.016 | 12.26 |
| Big Size | 0.003 | 0.003 | 0.004 | 0.005 | 0.006 | 0.009 | 11.30 | 0.009 | 11.97 |

Table 4: Returns and Transaction Costs for 6 Portfolios Classified by Size and Book-to-Market 1974-2005

At the end of each June from 1974 to 2004, we form 6 value-weighted portfolios as the intersection of independent sorts of NYSE, AMEX, and NASDAQ stocks into two size groups (S, B) and three book-to-market groups (V, N, G). We use median value of NYSE market cap and 30%, 40% and 70% of BM breakpoints to classify the stocks into 6 groups (SG, SN, SV, BG, BN, and BV). Size for a stock in year t is measured by the market capitalization at the end of June, which is calculated as the closing price of the stock multiplied by the number of shares outstanding at June of year t . Book equity in book-to-market is for the fiscal year ending in year $t-1$ and market equity is market cap at the end of December of year t . Panel B presents value-weighted average annual returns for each portfolio. Panel C presents average annual LOT measure of transaction costs for each portfolio. LOT measure is estimated by maximizing the likelihood function in equation 4 in the paper. In Panel B, the value premium, VMG, is the simple average returns on the two value portfolios less the average returns on the two growth portfolios: $VMG = (VB+VS)/2 - (GB+GS)/2$. The other value premiums are calculated as: $VMGS = SV - SG$, and $VMGB = BV - BG$. Panel C reports the average annual transaction costs. The transaction costs of VMG is equal to $(VB+VS)/2 + (GB+GS)/2$. The other value premiums are calculated as: $VMGS = SV + SG$, and $VMGB = BV + BG$.

Panel A: 6 Size/BM Portfolios - Average annual buy-and-hold returns

| | SG | SN | SV | BG | BN | BV |
|-------------|-------|-------|-------|-------|-------|-------|
| Mean | 0.147 | 0.182 | 0.204 | 0.124 | 0.150 | 0.159 |
| Std Dev | 0.212 | 0.184 | 0.171 | 0.171 | 0.149 | 0.147 |
| t-statistic | 3.93 | 5.60 | 6.78 | 4.09 | 5.71 | 6.11 |

Panel B: 6 Size/BM Portfolios - Value Premiums

| | SMB | VMG | VMGS | VMGB |
|-------------|-------|-------|-------|-------|
| Mean | 0.034 | 0.046 | 0.057 | 0.035 |
| Std Dev | 0.108 | 0.132 | 0.139 | 0.150 |
| t-statistic | 1.76 | 1.97 | 2.33 | 1.31 |

Panel C: 6 Size/BM Portfolios - Average annual transaction costs

| | SG | SN | SV | BG | BN | BV |
|-------------|-------|-------|-------|-------|-------|-------|
| Mean | 0.022 | 0.020 | 0.026 | 0.004 | 0.005 | 0.007 |
| Std Dev | 0.010 | 0.010 | 0.013 | 0.002 | 0.002 | 0.003 |
| t-statistic | 12.43 | 11.26 | 11.61 | 12.66 | 12.03 | 10.99 |

Panel D: 6 Size/BM Portfolios - Transaction Costs for Value Strategies

| | SMB | VMG | VMGS | VMGB |
|-------------|-------|-------|-------|-------|
| Mean | 0.028 | 0.029 | 0.048 | 0.010 |
| Std Dev | 0.013 | 0.014 | 0.022 | 0.005 |
| t-statistic | 12.07 | 12.22 | 12.10 | 12.05 |

Table 5: Returns and Transaction Costs for 25 Portfolios Classified by Liquidity (Amivest) and Book-to-Market 1974-2005

At the end of each June from 1974 to 2004, we form 25 value-weighted portfolios as the intersection of independent sorts of NYSE, AMEX, and NASDAQ stocks into five liquidity groups and five book-to-market groups. We use NYSE liquidity and book-to-market quintile breakpoints to classify the stocks into five groups. Liquidity of stocks in this table is measured by Amivest measure. Liquidity during year $t-1$ is used to form portfolios for year t . Book equity in book-to-market is for the fiscal year ending in year $t-1$ and market equity is market cap at the end of December of year t . Panel B presents value-weighted average annual returns for each portfolio. Panel C reports the average annual LOT measure of transaction costs for each portfolio. LOT measure is estimated by maximizing the likelihood function in equation 4 of the paper. H-L in Panel B is the value premium for a liquidity group estimated from the time series of annual differences between the average returns for the highest BM quintile within a liquidity quintile and the average returns for the lowest BM quintile in the same liquidity quintile. H45-L12 in Panel B is the value premium for a liquidity group estimated from the time series of annual differences between the average returns for the two highest BM quintiles within a liquidity quintile and the average returns for the two lowest BM quintiles in the same liquidity quintile. H-L in Panel C is the average transaction cost for implementing value strategy H-L and equals to the roundtrip transaction costs for the highest BM quintile and those for the lowest BM quintile. H45-L12 in Panel C is the average transaction cost for implementing value strategy H45-L12 and equals to the average round trip transaction costs for the two highest BM quintiles and those for the two lowest BM quintiles within a liquidity quintile.

Panel A: Number of Firms

| | Low | 2 | 3 | 4 | High | Sum |
|----------------|-----|-----|-----|-----|------|------|
| Liquidity-Low | 314 | 268 | 308 | 379 | 608 | 1876 |
| 2 | 183 | 125 | 115 | 107 | 100 | 630 |
| 3 | 154 | 104 | 89 | 76 | 58 | 480 |
| 4 | 117 | 85 | 67 | 59 | 44 | 372 |
| Liquidity-High | 110 | 68 | 55 | 49 | 39 | 321 |
| Sum | 877 | 650 | 635 | 669 | 848 | 3679 |

Panel B: 25 Liquidity (Amivest) / BM Portfolios - Average buy and hold annual returns

| | Low | 2 | 3 | 4 | High | H-L | t(H-L) | H45-L12 | t(H45-L12) |
|----------------|-------|-------|-------|-------|-------|-------|--------|---------|------------|
| Liquidity-Low | 0.143 | 0.158 | 0.195 | 0.203 | 0.205 | 0.063 | 2.36 | 0.054 | 2.79 |
| 2 | 0.139 | 0.160 | 0.184 | 0.170 | 0.195 | 0.056 | 2.02 | 0.033 | 1.74 |
| 3 | 0.136 | 0.157 | 0.173 | 0.175 | 0.201 | 0.065 | 2.21 | 0.042 | 2.08 |
| 4 | 0.123 | 0.152 | 0.161 | 0.170 | 0.202 | 0.079 | 2.71 | 0.048 | 2.43 |
| Liquidity-High | 0.117 | 0.144 | 0.144 | 0.151 | 0.160 | 0.043 | 1.37 | 0.025 | 1.26 |

Panel C: 25 Liquidity (Amivest) / BM Portfolios - Average annual transaction costs

| | Low | 2.00 | 3.00 | 4.00 | High | H-L | t(H-L) | H45-L12 | t(H45-L12) |
|----------------|-------|-------|-------|-------|-------|-------|--------|---------|------------|
| Liquidity-Low | 0.026 | 0.020 | 0.018 | 0.019 | 0.031 | 0.057 | 11.16 | 0.048 | 11.83 |
| 2 | 0.012 | 0.011 | 0.011 | 0.012 | 0.016 | 0.028 | 13.27 | 0.025 | 13.14 |
| 3 | 0.008 | 0.008 | 0.008 | 0.009 | 0.011 | 0.019 | 11.55 | 0.018 | 12.18 |
| 4 | 0.005 | 0.006 | 0.006 | 0.007 | 0.009 | 0.015 | 11.45 | 0.013 | 11.58 |
| Liquidity-High | 0.003 | 0.003 | 0.004 | 0.005 | 0.007 | 0.009 | 10.95 | 0.009 | 11.60 |

Table 6: Returns and Transaction Costs for 25 Portfolios Classified by Liquidity (Liu 2006) and Book-to-Market 1974-2005

At the end of each June from 1974 to 2004, we form 25 value-weighted portfolios as the intersection of independent sorts of NYSE, AMEX, and NASDAQ stocks into five liquidity groups and five book-to-market groups. We use NYSE liquidity and book-to-market quintile breakpoints to classify the stocks into five groups. Liquidity of stocks in this table is measured as in Liu (2006). Liquidity during year $t-1$ is used to form portfolios for year t . Book equity in book-to-market is for the fiscal year ending in year $t-1$ and market equity is market cap at the end of December of year t . Panel B presents value-weighted average annual returns for each portfolio. Panel C presents average annual LOT measure of transaction costs for each portfolio. LOT measure is estimated by maximizing the likelihood function in equation 4 of the paper. H-L in Panel B is the value premium for a liquidity group estimated from the time series of annual differences between the average returns for the highest BM quintile within a liquidity quintile and the average returns for the lowest BM quintile in the same liquidity quintile. H45-L12 in Panel B is the value premium for a liquidity group estimated from the time series of annual differences between the average returns for the two highest BM quintiles within a liquidity quintile and the average returns for the two lowest BM quintiles in the same liquidity quintile. H-L in Panel C is the average transaction cost for implementing value strategy H-L and equals to the roundtrip transaction costs for the highest BM quintile and those for the lowest BM quintile. H45-L12 in Panel C is the average transaction cost for implementing value strategy H45-L12 and equals to the average roundtrip transaction costs for the two highest BM quintiles and those for the two lowest BM quintiles within a liquidity quintile.

Panel A: Number of Firms

| | Low | 2 | 3 | 4 | High | Sum |
|----------------|-----|-----|-----|-----|------|------|
| Liquidity-High | 283 | 152 | 109 | 93 | 93 | 730 |
| 2 | 109 | 86 | 76 | 68 | 67 | 406 |
| 3 | 90 | 75 | 75 | 69 | 57 | 367 |
| 4 | 81 | 72 | 79 | 80 | 68 | 380 |
| Liquidity-Low | 313 | 265 | 296 | 359 | 562 | 1796 |
| Sum | 877 | 650 | 635 | 669 | 848 | 3679 |

Panel B: 25 Liquidity (Liu) /BM Portfolios: Average buy and hold annual returns

| | Low | 2 | 3 | 4 | High | H-L | t(H-L) | H45-L12 | t(H45-L12) |
|----------------|-------|-------|-------|-------|-------|-------|--------|---------|------------|
| Liquidity-High | 0.118 | 0.150 | 0.156 | 0.160 | 0.193 | 0.075 | 1.87 | 0.042 | 1.60 |
| 2 | 0.129 | 0.161 | 0.161 | 0.158 | 0.194 | 0.065 | 1.79 | 0.031 | 1.24 |
| 3 | 0.120 | 0.143 | 0.160 | 0.160 | 0.180 | 0.060 | 1.77 | 0.038 | 1.94 |
| 4 | 0.118 | 0.139 | 0.146 | 0.168 | 0.181 | 0.064 | 2.09 | 0.047 | 1.87 |
| Liquidity-Low | 0.128 | 0.148 | 0.192 | 0.195 | 0.191 | 0.063 | 3.30 | 0.055 | 2.43 |

Panel C: 25 Liquidity (Liu)/BM Portfolios: Average annual transaction costs

| | Low | 2 | 3 | 4 | High | H-L | t(H-L) | H45-L12 | t(H45-L12) |
|----------------|-------|-------|-------|-------|-------|-------|--------|---------|------------|
| Liquidity-High | 0.005 | 0.006 | 0.007 | 0.007 | 0.010 | 0.015 | 11.69 | 0.014 | 11.93 |
| 2 | 0.004 | 0.004 | 0.005 | 0.006 | 0.009 | 0.013 | 11.67 | 0.012 | 12.35 |
| 3 | 0.003 | 0.004 | 0.005 | 0.006 | 0.008 | 0.011 | 9.61 | 0.011 | 10.60 |
| 4 | 0.004 | 0.004 | 0.005 | 0.006 | 0.011 | 0.015 | 7.77 | 0.013 | 8.72 |
| Liquidity-Low | 0.016 | 0.014 | 0.015 | 0.016 | 0.026 | 0.043 | 9.99 | 0.037 | 10.71 |

Table 7: Summary of Value Strategies

LSV value strategy is based on LSV (1994). At the end of each December between 1973 and 2004, 10 decile portfolios are formed in ascending order of BM. BM rank 1 represents value portfolio and 10 represents growth portfolio. FF value strategy is based on Fama and French (1993, 2006). At the end of each June from 1974 to 2004, 6 value-weighted portfolios are formed as the intersection of independent sorts of NYSE, AMEX, and NASDAQ stocks into two size groups (S, B) and three book-to-market groups (V, N, G). Alternatively, 25 value-weighted portfolios are formed as the intersection of independent sorts of NYSE, AMEX, and NASDAQ stocks into five size groups and five book-to-market groups. Liquidity-adjusted value strategy is based on double sorts on liquidity and BM. At the end of each June from 1974 to 2004, we form 25 value-weighted portfolios as the intersection of independent sorts of NYSE, AMEX, and NASDAQ stocks into five liquidity groups and five book-to-market groups. H stands for the highest BM quintile and L stands for the lowest BM quintile. H45 represents the two highest BM quintiles and L12 represents the two lowest BM quintiles.

| | Portfolio Formation | No. of portfolios | Value Premium |
|--|-----------------------------------|-------------------|--|
| <u>LSV Value Strategy</u> | BM deciles | 10 | BM10-BM1 |
| <u>FF Value Strategy</u> | 2 Size groups/3 BM groups | 6 | VMG = (VB+VS)/2 - (GB+GS)/2 VMGS=SV-SG VMGB=BV-BG |
| | Size quintiles/BM quintiles | 25 | For each size quintile: H-L=BM5-BM1 H45-L12=(BM5+BM4)/2 - (BM1+BM2)/2 |
| <u>Liquidity-adjusted Value Strategy</u> | Liquidity Quintiles/ BM Quintiles | 25 | For each liquidity quintile: H-L=BM5-BM1 H45-L12=(BM5+BM4)/2 - (BM1+BM2)/2 |

Table 8: LOT measure of trading costs for LSV Strategy (1973-2004)

BM is the ratio of book equity to market value of equity. Market value of equity is calculated as the price multiplied by shares outstanding. At the end of each December between 1974 and 2003, 10 decile portfolios are formed in ascending order of BM. BM rank 1 represents value portfolio and 10 represents growth portfolio. LOT measure of transaction costs is estimated by maximizing the likelihood function in equation 4 of the paper.

| BM | Growth | | | Value |
|---------------------|--------|-------|-------|-------|
| | 1 | 4 | 7 | 10 |
| 1973 | 0.017 | 0.023 | 0.036 | 0.074 |
| 1974 | 0.023 | 0.038 | 0.058 | 0.108 |
| 1975 | 0.027 | 0.040 | 0.075 | 0.115 |
| 1976 | 0.035 | 0.036 | 0.063 | 0.128 |
| 1977 | 0.046 | 0.042 | 0.052 | 0.109 |
| 1978 | 0.046 | 0.039 | 0.053 | 0.078 |
| 1979 | 0.044 | 0.048 | 0.039 | 0.102 |
| 1980 | 0.035 | 0.032 | 0.037 | 0.097 |
| 1981 | 0.026 | 0.022 | 0.032 | 0.080 |
| 1982 | 0.039 | 0.040 | 0.043 | 0.098 |
| 1983 | 0.033 | 0.025 | 0.026 | 0.070 |
| 1984 | 0.068 | 0.037 | 0.042 | 0.112 |
| 1985 | 0.059 | 0.041 | 0.032 | 0.131 |
| 1986 | 0.062 | 0.033 | 0.043 | 0.128 |
| 1987 | 0.057 | 0.045 | 0.047 | 0.109 |
| 1988 | 0.066 | 0.056 | 0.057 | 0.142 |
| 1989 | 0.067 | 0.039 | 0.055 | 0.149 |
| 1990 | 0.070 | 0.035 | 0.081 | 0.164 |
| 1991 | 0.073 | 0.060 | 0.080 | 0.182 |
| 1992 | 0.058 | 0.038 | 0.046 | 0.130 |
| 1993 | 0.047 | 0.028 | 0.031 | 0.103 |
| 1994 | 0.036 | 0.028 | 0.033 | 0.080 |
| 1995 | 0.035 | 0.023 | 0.036 | 0.069 |
| 1996 | 0.027 | 0.026 | 0.028 | 0.061 |
| 1997 | 0.018 | 0.019 | 0.023 | 0.053 |
| 1998 | 0.016 | 0.014 | 0.024 | 0.038 |
| 1999 | 0.021 | 0.016 | 0.022 | 0.038 |
| 2000 | 0.011 | 0.014 | 0.024 | 0.035 |
| 2001 | 0.009 | 0.008 | 0.015 | 0.024 |
| 2002 | 0.007 | 0.004 | 0.008 | 0.020 |
| 2003 | 0.006 | 0.003 | 0.007 | 0.016 |
| 2004 | 0.005 | 0.003 | 0.007 | 0.008 |
| Average (1973-1982) | 0.034 | 0.036 | 0.049 | 0.099 |
| Average (1983-1992) | 0.061 | 0.041 | 0.051 | 0.132 |
| Average (1993-2004) | 0.020 | 0.016 | 0.021 | 0.046 |
| Total Average | 0.037 | 0.030 | 0.039 | 0.089 |

Table 9: Profitability of Value strategy

Panel A and Panel B show the transaction-cost-adjusted premium of FF value strategy. Panel C and Panel D present the transaction-cost-adjusted premium of liquidity-adjusted value strategy. FF strategy is based on Fama and French (1993,2006). At the end of each June from 1974 to 2004, 25 value-weighted portfolios are formed as the intersection of independent sorts of NYSE, AMEX, and NASDAQ stocks into five size groups and five book-to-market groups. Alternatively, 6 value-weighted portfolios are formed as the intersection of independent sorts of NYSE, AMEX, and NASDAQ stocks into two size groups (S, B) and three book-to-market groups (V, N, G). Liquidity strategy is based on double sorts on liquidity and BM. At the end of each June from 1974 to 2004, we form 25 value-weighted portfolios as the intersection of independent sorts of NYSE, AMEX, and NASDAQ stocks into five liquidity groups and five book-to-market groups. H stands for the highest BM quintile and L stands for the lowest BM quintile. H45 represents the two highest BM quintiles and L12 represents the two lowest BM quintiles. The value premiums are as defined in Table 7. The transaction-cost-adjusted value premiums reported in this table are value premiums defined in Table 7 less the transaction costs associated with each value strategy.

Panel A: 25 Size-BM Portfolios: Transaction-cost-adjusted value premium

| | H-L | t(H-L) | H45-L12 | t(H45-L12) |
|-------|------|--------|---------|------------|
| Small | 0.00 | -0.05 | -0.03 | -1.30 |
| 2 | 0.03 | 1.08 | 0.01 | 0.60 |
| 3 | 0.04 | 1.28 | 0.01 | 0.59 |
| 4 | 0.04 | 1.55 | 0.02 | 1.33 |
| Big | 0.02 | 0.70 | 0.01 | 0.46 |

Panel B: 6 Size-BM Portfolios: Transaction-cost-adjusted value premiums

| | SMB | VMG | VMGS | VMGB |
|-------------|--------|--------|--------|--------|
| Mean | 12.431 | 11.263 | 11.608 | 12.662 |
| Std Dev | 0.108 | 0.132 | 0.141 | 0.150 |
| t-statistic | 0.32 | 0.72 | 0.37 | 0.92 |

Panel C: 25 Liquidity (Amivest)-BM Portfolios – Transaction-cost-adjusted value premium

| | H-L | t(H-L) | H45-L12 | t(H45-L12) |
|----------------|-------|--------|---------|------------|
| Liquidity-Low | 0.005 | 0.15 | 0.006 | 0.23 |
| 2 | 0.029 | 1.02 | 0.008 | 0.40 |
| 3 | 0.045 | 1.55 | 0.024 | 1.19 |
| 4 | 0.064 | 2.22 | 0.035 | 1.76 |
| Liquidity-High | 0.034 | 1.07 | 0.016 | 0.80 |

Panel D: 25 Liquidity (Liu)-BM Portfolios – Transaction-cost-adjusted value premium

| | H-L | t(H-L) | H45-L12 | t(H45-L12) |
|----------------|-------|--------|---------|------------|
| Liquidity-High | 0.060 | 1.50 | 0.028 | 1.05 |
| 2 | 0.052 | 1.43 | 0.020 | 0.76 |
| 3 | 0.049 | 1.44 | 0.028 | 1.41 |
| 4 | 0.049 | 1.63 | 0.034 | 1.38 |
| Liquidity-Low | 0.020 | 0.73 | 0.018 | 1.06 |

CFR working papers are available for download from www.cfr-cologne.de.

hardcopies can be ordered from: centre for financial research (CFR),
Albertus Magnus Platz, 50923 Koeln, Germany.

2012

| No. | Author(s) | Title |
|-------|---|--|
| 12-06 | A. Kempf, A. Pütz, F. Sonnenburg | Fund Manager Duality: Impact on Performance and Investment Behavior |
| 12-05 | R. Wermers | Runs on Money Market Mutual Funds |
| 12-04 | R. Wermers | A matter of style: The causes and consequences of style drift in institutional portfolios |
| 12-03 | C. Andres, A. Betzer, I. van den Bongard, C. Haesner, E. Theissen | Dividend Announcements Reconsidered: Dividend Changes versus Dividend Surprises |
| 12-02 | C. Andres, E. Fernau, E. Theissen | Is It Better To Say Goodbye? When Former Executives Set Executive Pay |
| 12-01 | L. Andreu, A. Pütz | Are Two Business Degrees Better Than One? Evidence from Mutual Fund Managers' Education |

2011

| No. | Author(s) | Title |
|-------|--|--|
| 11-16 | V. Agarwal, J.-P. Gómez, R. Priestley | Management Compensation and Market Timing under Portfolio Constraints |
| 11-15 | T. Dimpfl, S. Jank | Can Internet Search Queries Help to Predict Stock Market Volatility? |
| 11-14 | P. Gomber, U. Schweickert, E. Theissen | Liquidity Dynamics in an Electronic Open Limit Order Book: An Event Study Approach |
| 11-13 | D. Hess, S. Orbe | Irrationality or Efficiency of Macroeconomic Survey Forecasts? Implications from the Anchoring Bias Test |
| 11-12 | D. Hess, P. Immenkötter | Optimal Leverage, its Benefits, and the Business Cycle |
| 11-11 | N. Heinrichs, D. Hess, C. Homburg, M. Lorenz, S. Sievers | Extended Dividend, Cash Flow and Residual Income Valuation Models – Accounting for Deviations from Ideal Conditions |
| 11-10 | A. Kempf, O. Korn, S. Saßning | Portfolio Optimization using Forward - Looking Information |

| | | |
|-------|---------------------------------|---|
| 11-09 | V. Agarwal, S. Ray | Determinants and Implications of Fee Changes in the Hedge Fund Industry |
| 11-08 | G. Cici, L.-F. Palacios | On the Use of Options by Mutual Funds: Do They Know What They Are Doing? |
| 11-07 | V. Agarwal, G. D. Gay, L. Ling | Performance inconsistency in mutual funds: An investigation of window-dressing behavior |
| 11-06 | N. Hautsch, D. Hess, D. Veredas | The Impact of Macroeconomic News on Quote Adjustments, Noise, and Informational Volatility |
| 11-05 | G. Cici | The Prevalence of the Disposition Effect in Mutual Funds' Trades |
| 11-04 | S. Jank | Mutual Fund Flows, Expected Returns and the Real Economy |
| 11-03 | G.Fellner, E.Theissen | Short Sale Constraints, Divergence of Opinion and Asset Value: Evidence from the Laboratory |
| 11-02 | S.Jank | Are There Disadvantaged Clienteles in Mutual Funds? |
| 11-01 | V. Agarwal, C. Meneghetti | The Role of Hedge Funds as Primary Lenders |

2010

| No. | Author(s) | Title |
|-------|---|---|
| 10-20 | G. Cici, S. Gibson, J.J. Merrick Jr. | Missing the Marks? Dispersion in Corporate Bond Valuations Across Mutual Funds |
| 10-19 | J. Hengelbrock, E. Theissen, C. Westheide | Market Response to Investor Sentiment |
| 10-18 | G. Cici, S. Gibson | The Performance of Corporate-Bond Mutual Funds: Evidence Based on Security-Level Holdings |
| 10-17 | D. Hess, D. Kreutzmann, O. Pucker | Projected Earnings Accuracy and the Profitability of Stock Recommendations |
| 10-16 | S. Jank, M. Wedow | Sturm und Drang in Money Market Funds: When Money Market Funds Cease to Be Narrow |
| 10-15 | G. Cici, A. Kempf, A. Puetz | The Valuation of Hedge Funds' Equity Positions |
| 10-14 | J. Grammig, S. Jank | Creative Destruction and Asset Prices |
| 10-13 | S. Jank, M. Wedow | Purchase and Redemption Decisions of Mutual Fund Investors and the Role of Fund Families |
| 10-12 | S. Artmann, P. Finter, A. Kempf, S. Koch, E. Theissen | The Cross-Section of German Stock Returns: New Data and New Evidence |
| 10-11 | M. Chesney, A. Kempf | The Value of Tradeability |
| 10-10 | S. Frey, P. Herbst | The Influence of Buy-side Analysts on Mutual Fund Trading |
| 10-09 | V. Agarwal, W. Jiang, Y. Tang, B. Yang | Uncovering Hedge Fund Skill from the Portfolio Holdings They Hide |
| 10-08 | V. Agarwal, V. Fos, W. Jiang | Inferring Reporting Biases in Hedge Fund Databases from Hedge Fund Equity Holdings |
| 10-07 | V. Agarwal, G. Bakshi, | Do Higher-Moment Equity Risks Explain Hedge Fund |

| | | |
|-------|--|--|
| | J. Huij | Returns? |
| 10-06 | J. Grammig, F. J. Peter | Tell-Tale Tails |
| 10-05 | K. Drachter, A. Kempf | Höhe, Struktur und Determinanten der Managervergütung- Eine Analyse der Fondsbranche in Deutschland |
| 10-04 | J. Fang, A. Kempf, M. Trapp | Fund Manager Allocation |
| 10-03 | P. Finter, A. Niessen- Ruenzi, S. Ruenzi | The Impact of Investor Sentiment on the German Stock Market |
| 10-02 | D. Hunter, E. Kandel, S. Kandel, R. Wermers | Endogenous Benchmarks |
| 10-01 | S. Artmann, P. Finter, A. Kempf | Determinants of Expected Stock Returns: Large Sample Evidence from the German Market |

2009

| No. | Author(s) | Title |
|-------|--|--|
| 09-17 | E. Theissen | Price Discovery in Spot and Futures Markets: A Reconsideration |
| 09-16 | M. Trapp | Trading the Bond-CDS Basis – The Role of Credit Risk and Liquidity |
| 09-15 | A. Betzer, J. Gider, D.Metzger, E. Theissen | Strategic Trading and Trade Reporting by Corporate Insiders |
| 09-14 | A. Kempf, O. Korn, M. Uhrig-Homburg | The Term Structure of Illiquidity Premia |
| 09-13 | W. Bühler, M. Trapp | Time-Varying Credit Risk and Liquidity Premia in Bond and CDS Markets |
| 09-12 | W. Bühler, M. Trapp | Explaining the Bond-CDS Basis – The Role of Credit Risk and Liquidity |
| 09-11 | S. J. Taylor, P. K. Yadav, Y. Zhang | Cross-sectional analysis of risk-neutral skewness |
| 09-10 | A. Kempf, C. Merkle, A. Niessen-Ruenzi | Low Risk and High Return – Affective Attitudes and Stock Market Expectations |
| 09-09 | V. Fotak, V. Raman, P. K. Yadav | Naked Short Selling: The Emperor`s New Clothes? |
| 09-08 | F. Bardong, S.M. Bartram, P.K. Yadav | Informed Trading, Information Asymmetry and Pricing of Information Risk: Empirical Evidence from the NYSE |
| 09-07 | S. J. Taylor , P. K. Yadav, Y. Zhang | The information content of implied volatilities and model-free volatility expectations: Evidence from options written on individual stocks |
| 09-06 | S. Frey, P. Sandas | The Impact of Iceberg Orders in Limit Order Books |
| 09-05 | H. Beltran-Lopez, P. Giot, J. Grammig | Commonalities in the Order Book |
| 09-04 | J. Fang, S. Ruenzi | Rapid Trading bei deutschen Aktienfonds: Evidenz aus einer großen deutschen Fondsgesellschaft |
| 09-03 | A. Banegas, B. Gillen, A. Timmermann, R. Wermers | The Performance of European Equity Mutual Funds |

| | | |
|-------|---|---|
| 09-02 | J. Grammig, A. Schrimpf, M. Schuppli | Long-Horizon Consumption Risk and the Cross-Section of Returns: New Tests and International Evidence |
| 09-01 | O. Korn, P. Koziol | The Term Structure of Currency Hedge Ratios |

2008

| No. | Author(s) | Title |
|-------|---|---|
| 08-12 | U. Bonenkamp, C. Homburg, A. Kempf | Fundamental Information in Technical Trading Strategies |
| 08-11 | O. Korn | Risk Management with Default-risky Forwards |
| 08-10 | J. Grammig, F.J. Peter | International Price Discovery in the Presence of Market Microstructure Effects |
| 08-09 | C. M. Kuhnen, A. Niessen | Public Opinion and Executive Compensation |
| 08-08 | A. Pütz, S. Ruenzi | Overconfidence among Professional Investors: Evidence from Mutual Fund Managers |
| 08-07 | P. Osthoff | What matters to SRI investors? |
| 08-06 | A. Betzer, E. Theissen | Sooner Or Later: Delays in Trade Reporting by Corporate Insiders |
| 08-05 | P. Linge, E. Theissen | Determinanten der Aktionärspräsenz auf Hauptversammlungen deutscher Aktiengesellschaften |
| 08-04 | N. Hautsch, D. Hess, C. Müller | Price Adjustment to News with Uncertain Precision |
| 08-03 | D. Hess, H. Huang, A. Niessen | How Do Commodity Futures Respond to Macroeconomic News? |
| 08-02 | R. Chakrabarti, W. Megginson, P. Yadav | Corporate Governance in India |
| 08-01 | C. Andres, E. Theissen | Setting a Fox to Keep the Geese - Does the Comply-or-Explain Principle Work? |

2007

| No. | Author(s) | Title |
|-------|---|---|
| 07-16 | M. Bär, A. Niessen, S. Ruenzi | The Impact of Work Group Diversity on Performance: Large Sample Evidence from the Mutual Fund Industry |
| 07-15 | A. Niessen, S. Ruenzi | Political Connectedness and Firm Performance: Evidence From Germany |
| 07-14 | O. Korn | Hedging Price Risk when Payment Dates are Uncertain |
| 07-13 | A. Kempf, P. Osthoff | SRI Funds: Nomen est Omen |
| 07-12 | J. Grammig, E. Theissen, O. Wuensche | Time and Price Impact of a Trade: A Structural Approach |
| 07-11 | V. Agarwal, J. R. Kale | On the Relative Performance of Multi-Strategy and Funds of Hedge Funds |
| 07-10 | M. Kasch-Haroutounian, E. Theissen | Competition Between Exchanges: Euronext versus Xetra |
| 07-09 | V. Agarwal, N. D. Daniel, N. Y. Naik | Do hedge funds manage their reported returns? |

| | | |
|-------|---------------------------------------|--|
| 07-08 | N. C. Brown, K. D. Wei, R. Wermers | Analyst Recommendations, Mutual Fund Herding, and Overreaction in Stock Prices |
| 07-07 | A. Betzer, E. Theissen | Insider Trading and Corporate Governance: The Case of Germany |
| 07-06 | V. Agarwal, L. Wang | Transaction Costs and Value Premium |
| 07-05 | J. Grammig, A. Schrimpf | Asset Pricing with a Reference Level of Consumption: New Evidence from the Cross-Section of Stock Returns |
| 07-04 | V. Agarwal, N.M. Boyson, N.Y. Naik | Hedge Funds for retail investors? An examination of hedged mutual funds |
| 07-03 | D. Hess, A. Niessen | The Early News Catches the Attention: On the Relative Price Impact of Similar Economic Indicators |
| 07-02 | A. Kempf, S. Ruenzi, T. Thiele | Employment Risk, Compensation Incentives and Managerial Risk Taking - Evidence from the Mutual Fund Industry - |
| 07-01 | M. Hagemeister, A. Kempf | CAPM und erwartete Renditen: Eine Untersuchung auf Basis der Erwartung von Marktteilnehmern |

2006

| No. | Author(s) | Title |
|-------|--|---|
| 06-13 | S. Čeljo-Hörhager, A. Niessen | How do Self-fulfilling Prophecies affect Financial Ratings? - An experimental study |
| 06-12 | R. Wermers, Y. Wu, J. Zechner | Portfolio Performance, Discount Dynamics, and the Turnover of Closed-End Fund Managers |
| 06-11 | U. v. Lilienfeld-Toal, S. Ruenzi | Why Managers Hold Shares of Their Firm: An Empirical Analysis |
| 06-10 | A. Kempf, P. Osthoff | The Effect of Socially Responsible Investing on Portfolio Performance |
| 06-09 | R. Wermers, T. Yao, J. Zhao | Extracting Stock Selection Information from Mutual Fund holdings: An Efficient Aggregation Approach |
| 06-08 | M. Hoffmann, B. Kempa | The Poole Analysis in the New Open Economy Macroeconomic Framework |
| 06-07 | K. Drachter, A. Kempf, M. Wagner | Decision Processes in German Mutual Fund Companies: Evidence from a Telephone Survey |
| 06-06 | J.P. Krahnert, F.A. Schmid, E. Theissen | Investment Performance and Market Share: A Study of the German Mutual Fund Industry |
| 06-05 | S. Ber, S. Ruenzi | On the Usability of Synthetic Measures of Mutual Fund Net-Flows |
| 06-04 | A. Kempf, D. Mayston | Liquidity Commonality Beyond Best Prices |
| 06-03 | O. Korn, C. Koziol | Bond Portfolio Optimization: A Risk-Return Approach |
| 06-02 | O. Scaillet, L. Barras, R. Wermers | False Discoveries in Mutual Fund Performance: Measuring Luck in Estimated Alphas |
| 06-01 | A. Niessen, S. Ruenzi | Sex Matters: Gender Differences in a Professional Setting |

2005

| No. | Author(s) | Title |
|-------|-------------|---|
| 05-16 | E. Theissen | An Analysis of Private Investors' Stock Market Return Forecasts |

| | | |
|-------|--|---|
| 05-15 | T. Foucault, S. Moinas, E. Theissen | Does Anonymity Matter in Electronic Limit Order Markets |
| 05-14 | R. Kosowski, A. Timmermann, R. Wermers, H. White | Can Mutual Fund „Stars“ Really Pick Stocks? New Evidence from a Bootstrap Analysis |
| 05-13 | D. Avramov, R. Wermers | Investing in Mutual Funds when Returns are Predictable |
| 05-12 | K. Griese, A. Kempf | Liquiditätsdynamik am deutschen Aktienmarkt |
| 05-11 | S. Ber, A. Kempf, S. Ruenzi | Determinanten der Mittelzuflüsse bei deutschen Aktienfonds |
| 05-10 | M. Bär, A. Kempf, S. Ruenzi | Is a Team Different From the Sum of Its Parts? Evidence from Mutual Fund Managers |
| 05-09 | M. Hoffmann | Saving, Investment and the Net Foreign Asset Position |
| 05-08 | S. Ruenzi | Mutual Fund Growth in Standard and Specialist Market Segments |
| 05-07 | A. Kempf, S. Ruenzi | Status Quo Bias and the Number of Alternatives - An Empirical Illustration from the Mutual Fund Industry |
| 05-06 | J. Grammig, E. Theissen | Is Best Really Better? Internalization of Orders in an Open Limit Order Book |
| 05-05 | H. Beltran-Lopez, J. Grammig, A.J. Menkveld | Limit order books and trade informativeness |
| 05-04 | M. Hoffmann | Compensating Wages under different Exchange rate Regimes |
| 05-03 | M. Hoffmann | Fixed versus Flexible Exchange Rates: Evidence from Developing Countries |
| 05-02 | A. Kempf, C. Memmel | Estimating the Global Minimum Variance Portfolio |
| 05-01 | S. Frey, J. Grammig | Liquidity supply and adverse selection in a pure limit order book market |


2004

| No. | Author(s) | Title |
|-------|--|---|
| 04-10 | N. Hautsch, D. Hess | Bayesian Learning in Financial Markets – Testing for the Relevance of Information Precision in Price Discovery |
| 04-09 | A. Kempf, K. Kreuzberg | Portfolio Disclosure, Portfolio Selection and Mutual Fund Performance Evaluation |
| 04-08 | N.F. Carline, S.C. Linn, P.K. Yadav | Operating performance changes associated with corporate mergers and the role of corporate governance |
| 04-07 | J.J. Merrick, Jr., N.Y. Naik, P.K. Yadav | Strategic Trading Behaviour and Price Distortion in a Manipulated Market: Anatomy of a Squeeze |
| 04-06 | N.Y. Naik, P.K. Yadav | Trading Costs of Public Investors with Obligatory and Voluntary Market-Making: Evidence from Market Reforms |
| 04-05 | A. Kempf, S. Ruenzi | Family Matters: Rankings Within Fund Families and Fund Inflows |
| 04-04 | V. Agarwal, N.D. Daniel, N.Y. Naik | Role of Managerial Incentives and Discretion in Hedge Fund Performance |
| 04-03 | V. Agarwal, W.H. Fung, J.C. Loon, N.Y. Naik | Risk and Return in Convertible Arbitrage: Evidence from the Convertible Bond Market |
| 04-02 | A. Kempf, S. Ruenzi | Tournaments in Mutual Fund Families |

04-01

I. Chowdhury, M.
Hoffmann, A. Schabert

Inflation Dynamics and the Cost Channel of Monetary
Transmission



centre for financial research
cfr/university of cologne
albertus-magnus-platz
D-50923 cologne
fon +49(0)221-470-6995
fax +49(0)221-470-3992
kempf@cfr-cologne.de
www.cfr-cologne.de