

STARS

University of Central Florida
STARS

Text Materials of Central Florida

Central Florida Memory

1-1-1926

Oshihiyi

John B. Stetson University

Find similar works at: <https://stars.library.ucf.edu/cfm-texts>
University of Central Florida Libraries <http://library.ucf.edu>

This Yearbook is brought to you for free and open access by the Central Florida Memory at STARS. It has been accepted for inclusion in Text Materials of Central Florida by an authorized administrator of STARS. For more information, please contact STARS@ucf.edu.

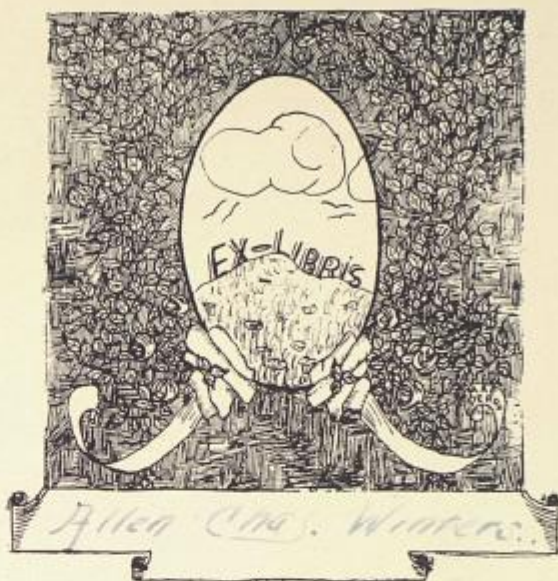
Recommended Citation

John B. Stetson University, "Oshihiyi" (1926). *Text Materials of Central Florida*. 415.
<https://stars.library.ucf.edu/cfm-texts/415>





O'SHIHIYI
1926



1926 OSHIHIYI
COPYRIGHT BY
CHARLOTTE FARRINGTON, *Editor*
JACK JOLLY, *Business Manager*

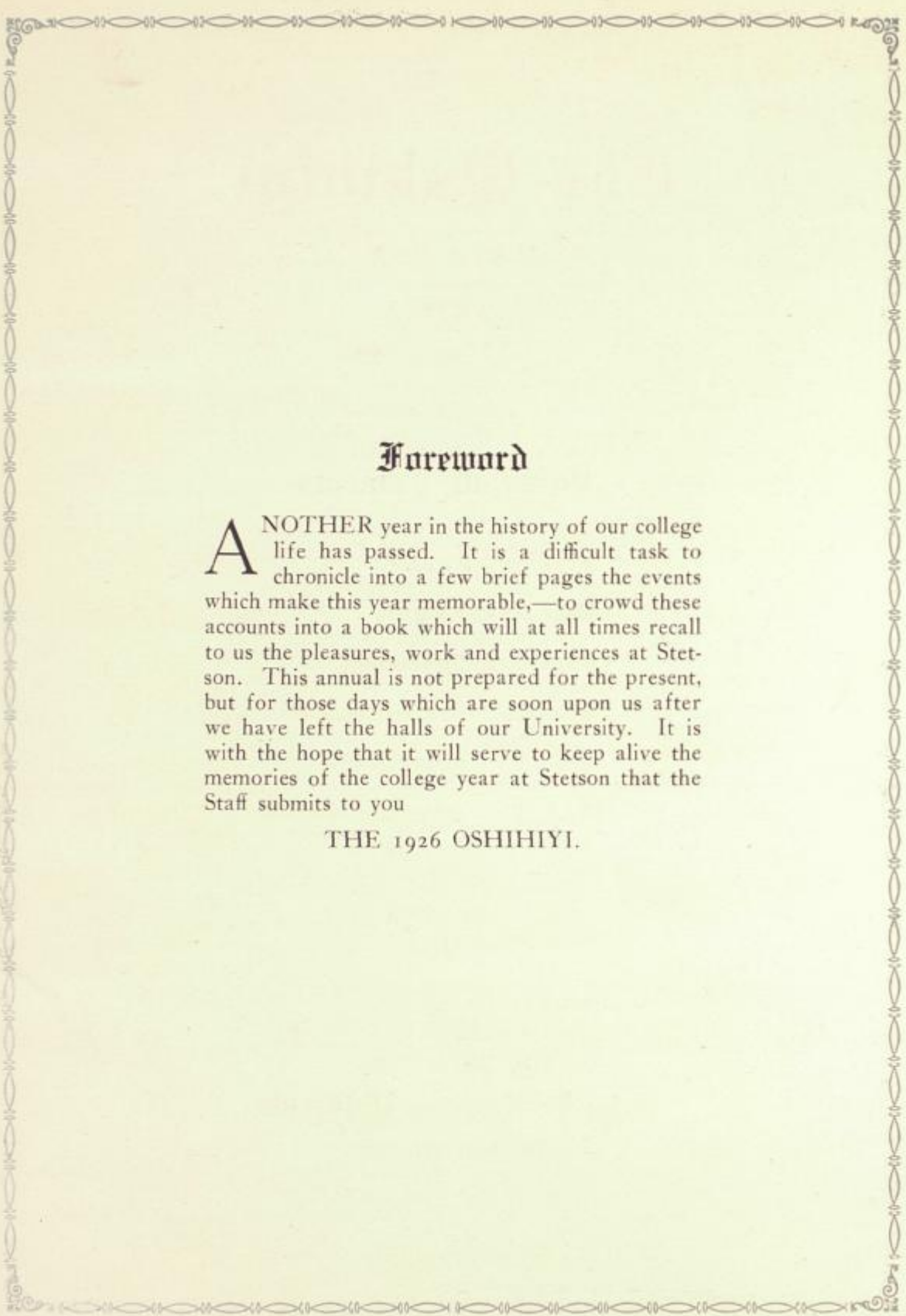
The Oshihiyi

Volume XIX

1926



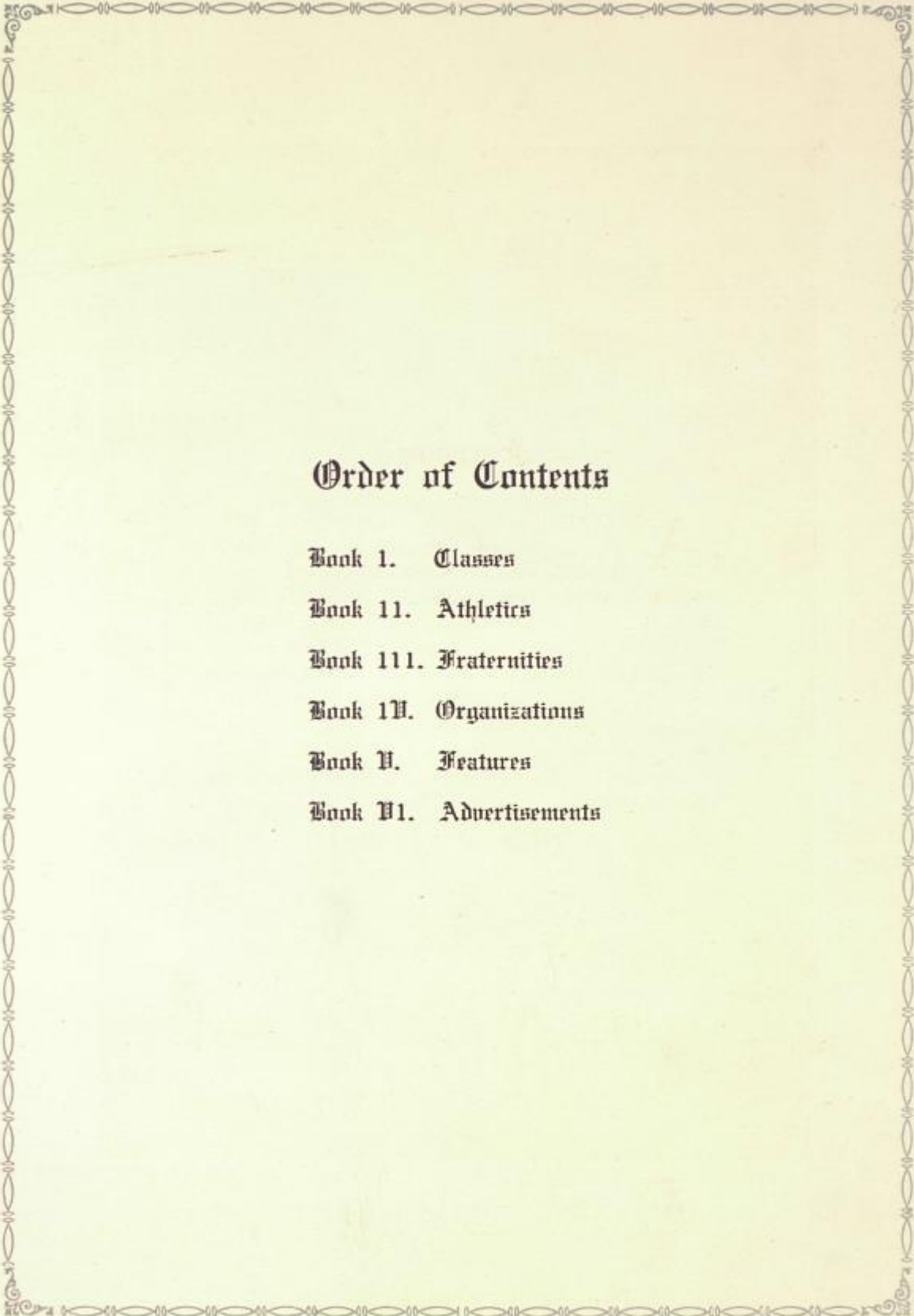
Published by
The Junior Class
John B. Stetson University
De Land, Florida



Foreward

ANOTHER year in the history of our college life has passed. It is a difficult task to chronicle into a few brief pages the events which make this year memorable,—to crowd these accounts into a book which will at all times recall to us the pleasures, work and experiences at Stetson. This annual is not prepared for the present, but for those days which are soon upon us after we have left the halls of our University. It is with the hope that it will serve to keep alive the memories of the college year at Stetson that the Staff submits to you

THE 1926 OSHIHIYI.



Order of Contents

Book I. Classes

Book II. Athletics

Book III. Fraternities

Book IV. Organizations

Book V. Features

Book VI. Advertisements



TO
George Prentice Carson

*Bachelor of Arts and Master of Arts of Wesleyan
University, Connecticut*

An earnest student.

Profound in scholarship.

A Doctor of Laws.

A devout churchman.

A Christian teacher and guide of youth.

An able administrator.

The beloved Dean of Stetson University.

A loyal friend.

For forty years a Professor at Stetson.

An educational leader, stimulator and burden-bearer.

We, the members of the Junior Class of John B. Stetson
University, in recognition of your sterling worth and devoted
service, dedicate with affection this edition of the OSHIHIYI.

VITA PLENA LABORIS.

Officers of Administration and Instruction

ADMINISTRATION

LINCOLN HULLEY, PH.D., LITT.D., LL.D.

President of the University

CHARLES S. FARRISS, A.B., D.D.

Vice-President of the University

G. PRENTICE CARSON, A.M., LL.D.

Dean of the University

MARY ESTELLE TRIBBLE, A.M.

Dean of Women

CLIFFORD B. ROSA

Bursar

INSTRUCTION

LINCOLN HULLEY, PH.D., LITT.D., LL.D.

Professor of Law

CHARLES S. FARRISS, A.B., D.D.

Professor of Latin and Greek

G. PRENTICE CARSON, A.M., LL.D.

Professor of History and Economics

WARREN STONE GORDIS, A.M., PH.D.

Professor of English

WILLIAM YOUNG MICKLE, B.S., A.M.

Professor of Business Administration

CLIFFORD B. ROSA

Professor of Accounts

IRVING C. STOVER, M.O., A.M., LITT.D.

Professor of Public Speaking

EDWARD PARK BARRELL, A.M., PH.D.

Professor of Chemistry

ORA PHILANDER SEWARD, LL.B., A.M., PH.D.

Professor of French and Spanish

HARRY CRAWFORD GARWOOD, A.B., TH.M.

Professor of Christian Apologetics and Biblical Literature

THOMAS OVID MABRY, PH.B., A.M., M.S.

Professor of Biology and Geology

BOYCE FOWLER EZELL, A.B., A.M.
Professor of Pedagogy and Secondary Education

ANNIE NADINE HOLDEN, A.M.
Professor of Latin and German

JAMES EDWIN FUTCH, A.B.
Professor of Law

LEWIS HERNDON TRIBBLE, A.B., LL.B.
Professor of Law

JACOB AMOS CARPENTER, LL.B.
Professor of Law

JAMES ALEXANDER ROBERTSON, L.H.D.
Research Professor in American History

JENNIS W. FUTCH, A.B., LL.B.
Professor of Law

ROBERT JACQUI EDWARDS
Professor of Mathematics and Civil Engineering

DAVID EARL DAVIS, B.S.
Professor of Mechanical Engineering and Mathematics

CLARENCE A. RUGGLES, B.S. IN E.E.
Professor of Electrical Engineering

HERBERT RAYMOND McQUILLAN, B.S.
Director of Physical Training and Athletics

MARY ESTELLE TRIBBLE, A.M.
Instructor in English

OLGA RUTH BOWEN, A.M.
Instructor in English

LUCILLE NEWBY, A.M.
Instructor in Mathematics and Science

EUNAH JOHNSON, A.B.
Instructor in English

GRACE WATSON GRIFFITH, A.M.
Instructor in Expression

MRS. M. S. MCGREGOR, B.O., A.B.
Instructor in Expression

MABEL MARIE COURSON, A.B.
Instructor in Domestic Science and Art

IDA MARY NEAL
Instructor in the Secretarial Course

HARRY DAVIS FLUHART

Instructor in Art

GEORGE E. GANIERE

Instructor in the Plastic Arts

MAHLON SPENCER MCGREGOR, A.B.

Assistant in Business Administration

ELIZABETH FLORENCE BROWN, B.S.

Assistant in Science

E. GALE HUNTINGTON, A.B.

Assistant in History

CHARLOTTE E. SMITH

Assistant in Business Administration

CECIL C. BAILEY

Assistant in Commercial English

ISAAC WALTER HAWKINS

Assistant in Auditing and Income Tax Procedure

CONSERVATORY OF MUSIC

WILLIAM EDWARD DUCKWITZ

Director

WILLIAM EDWARD DUCKWITZ, ROSA LEE GAUT,

ETHEL M. FISHER, RUTH HIBBARD

Pianoforte

MARGUERITE SPOFFORD, MARY DELLA LATHAM

Voice

MIRIAM MUNN FAULKNER, Ph.B.

Violin

EVA BAKER WELCH, Mus.B.

Organ and Harmony

RUTH HIBBARD

Public School Music

EDWARD TREA

Wind Instruments

RUTH HIBBARD

Choral, Glee Clubs

DONALD FAULKNER

Orchestra and Band



Book 1

Classes



Senior Class



CHARLES TRIBBLE

Delta Sigma Phi

DE LAND, FLORIDA

Candidate for B.S. Degree; Class President, '25, '26; Theta Alpha Phi; Football, '22, '23, '24, '25; Basket-ball, '23, '24, '25; Baseball, '25; Krucible Klub; "S" Club; Tempest, Othello, Peter the Rock, Charlie's Aunt, All at Sea; Business Manager 1925 OSHIHVI.

J. THEODORE GREEN

DE LAND, FLORIDA

Candidate for LL.B. Degree; Sigma Nu Phi; President Senior Law Class; Secretary-Treasurer Law Class, '25; Kent Club.



ELIZABETH F. BROWN, A.B.

BELLEVUE, PENNSYLVANIA

Candidate for M.S. Degree; Phi Beta; Torch and Scroll; President Orchestra, '25, Cellist Orchestra, '23, '24, '25; President Y. W. C. A., '25, Y. W. C. A. Cabinet, '23, '24, '25.

KERFOOT BRYANT, B.S.

Pi Kappa Phi

LAKELAND, FLORIDA

Candidate for LL.B. Degree; Phi Alpha Delta.



HERBERTA LEONARDI, Ph.B.
SANFORD, FLORIDA

Candidate for LL.B. Degree; Phi Delta Delta; Sigma Phi; Nothing But the Truth; Senior Class Play.

O. J. STENWALL, A.B.
DE LAND, FLORIDA

Candidate for LL.B. Degree; Phi Alpha Delta; Alpha Phi Epsilon; Kent Club.



J. C. BARNES

Sigma Nu

TUSCUMBIA, ALABAMA

Candidate for LL.B. Degree; Football, '24, '25; "S" Club; University of Alabama, '22, '23.

ZITA BELLAMY

DE LAND, FLORIDA

Candidate for A.B. Degree; Officer M. and M. Club, '23.

JEANNETTE ROAT BETTS

FREDERICA, DELAWARE

Candidate for Ph.B. Degree; Orchestra, '25; Two years George Washington University, Lucy Webb Hayes National Teachers' College, One year, Wesley Collegiate Institute.



IRA P. CROMER

Sigma Tau Delta

WEST PALM BEACH, FLORIDA

Candidate for LL.B. Degree; Phi Alpha Delta; Band, '23; Kent Club.

ROBERT HOWARD GOULD

DE LAND, FLORIDA

Candidate for B.S. Degree; Alpha Phi Epsilon; Torch and Scroll; Glee Club, '22, '23, Officer, '24; Krucible Klub, '22, '23, '24.

ETHEL HALL

GREEN COVE SPRINGS, FLORIDA

Candidate for A.B. Degree; Art Club, '25; Florida State College for Women, '22, '23.



SARAH BRADLEY

Delta Delta Delta
DE LAND, FLORIDA

Candidate for A.B. Degree; Torch and Scroll; Pan-Hellenic, '25; Vice-President Girls' Glee Club, '25.

HILLIS CARMEAN

Alpha Xi Delta
TAMPA, FLORIDA

Candidate for A.M. and A.B. Degrees; Theta Alpha Phi; Phi Beta; President Torch and Scroll, '25; President Student Council, '25, Member Student Council, '24, Delegate Student Government Convention, '24; Y. W. C. A. Cabinet, '23, '24, Delegate Blue Ridge, '24; Staff 1925 OSHIHIYI; Pan-Hellenic, '25; Prince Chap, The Whole Town's Talking, Ghost Story, Richard III, Senior Play.

LUCILLE CAYWOOD

Pi Beta Phi
NORTH MIDDLETOWN, KENTUCKY

Candidate for A.B. Degree; Torch and Scroll; Vice-President, '25, Treasurer, '24; Y. W. C. A. Cabinet, '25; Student Council, '25; Pan-Hellenic, '25; Staff 1925 OSHIHIYI; Ward-Belmont, '22, Randolph-Macon, '23.



I. WALTER HAWKINS
DE LAND, FLORIDA

Candidate for LL.B. Degree; Sigma Nu Phi; Phi Sigma Eta; Assistant Instructor in Business Administration; The Mocking Bird, Glee Club Minstrels.

C. RAY HON
Delta Sigma Phi
DE LAND, FLORIDA

Candidate for B.S. Degree; Phi Sigma Eta; Class Secretary, '25; Football, '23; OSHIHVI Staff, '24; Senior Class Play; Krucible Klub, '23, '24; "S" Club; Mars Hill College, '22.

LURA HUDSON
Alpha Xi Delta
BELLEFONTAINE, OHIO

Candidate for A.B. Degree; Glee Club, '23; Ashland College, '22, Wittenburg College, '24.



ELMER R. JONES
DE LAND, FLORIDA

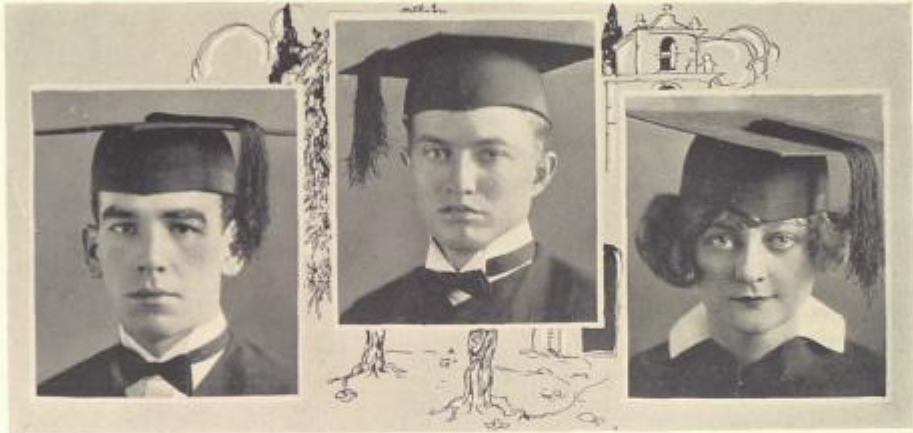
Candidate for LL.B. Degree; Sigma Nu Phi; President Law Class, '23, Vice-President, '24; Kent Club.

WILLIAM K. KING
Delta Sigma Phi
ST. PETERSBURG, FLORIDA

Candidate for LL.B. Degree; Sigma Nu Phi; Treasurer Class, '23, President, '24; Kent Club.

EVELYN LUCK
RAIFORD, FLORIDA

Candidate for A.B. Degree, Delta Psi Kappa; Basket-ball, '24, '25, Captain, '25; Art Club, '25; Florida State College for Women, '23, '24.



ALONZO P. MEADOWS
Sigma Nu

ANTHONY, FLORIDA

Candidate for LL.B. Degree; Phi Alpha Delta.

JACK B. OHLHABER
WEST PALM BEACH, FLORIDA

Candidate for LL.B. Degree; Sigma Nu Phi; Officer Stetson Literary Society, '24; Tennis, '23, '24, '25; Kent Club.

GERTRUDE O'KELL
MIAMI, FLORIDA

Candidate for LL.B. Degree; Vice-President Law Class, '25; Collegiate Staff, '25; OSHIHUYI Staff, '24; Y. W. C. A. Cabinet, '24; President Miami Club, '24; Cedar Crest College, '22, '23.



JOSEPH G. SPICOLA
TAMPA, FLORIDA

Candidate for LL.B. Degree; Sigma Nu Phi; Secretary-Treasurer Law Class, '25; Kent Club; Stetson Literary Society; Winner Corpus Juris Prize, '24.

FRANCIS L. STEWART
DE LAND, FLORIDA

Candidate for B.S. Degree.

REBEKAH STEWART
Pi Beta Phi

BEAVER FALLS, PENNSYLVANIA

Candidate for A.B. Degree; Pan-Hellenic, '23, '24, '25; Senior Class Play.



KATHRYN SUNDAY

Delta Delta Delta

DELRAY, FLORIDA

Candidate for A.B. Degree; Florida State College for Women, '22, '23, Anderson College, '24.

GLADYS TEED

ONEONTA, NEW YORK

Candidate for A.B. Degree; Y. W. C. A., '24; Y. W. A., '25; Krucible Klub, '24; Averett College, '22, '23.

ANNA VAN NESS

DE LAND, FLORIDA

Candidate for A.B. Degree; Phi Beta; Glee Club, '22, '23, '24; University Chimer, '24, '25; Torch and Scroll.



HAZEL OVERSTREET

Alpha Xi Delta

ORLANDO, FLORIDA

Candidate for A.B. Degree; Secretary-Treasurer Class, '25, Vice-President, '24; Staff 1925 OSHIHIYI; Student Council, '25; Pan-Hellenic, '24, President, '25.

VIRGINIA PRATHER

Pi Beta Phi

DE LAND, FLORIDA

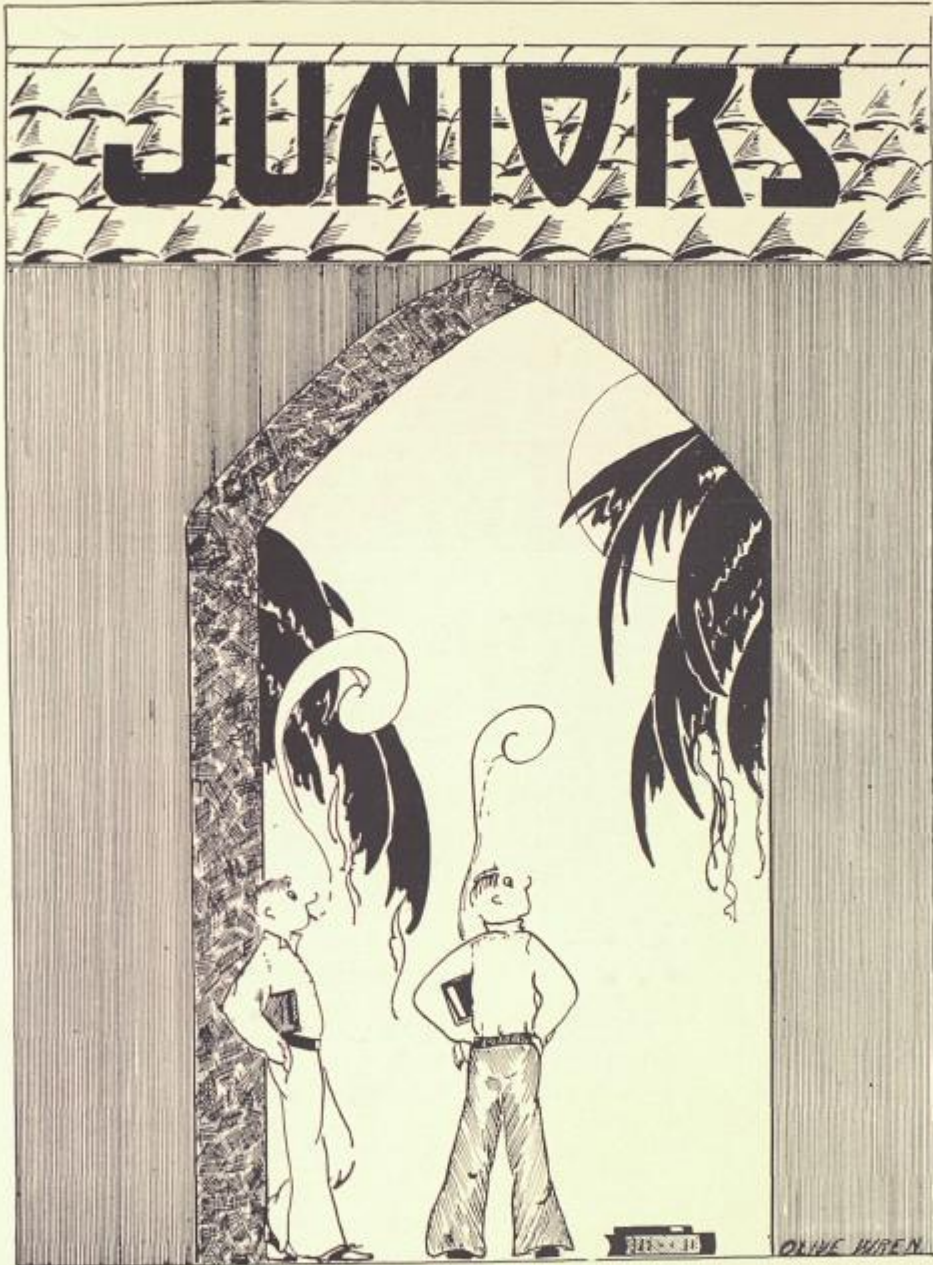
Candidate for A.B. Degree; Glee Club, '24.

CARROLL R. RUNYON

Sigma Nu

LONG ISLAND, NEW YORK

Candidate for LL.B. Degree; Sigma Nu Phi; Football, '22; Basket-ball, '23; "S" Club; Serpents.



Junior Class

EDWARD HENDERSON

Pi Kappa Phi

SANFORD, FLORIDA

Class President—Liberal Arts.

JACK C. ROSS

Sigma Nu

BLUEFIELD, WEST VIRGINIA

Class President—Law.

MYRTLE FRANKLIN

Pi Beta Phi

ORLANDO, FLORIDA

Vice-President—Liberal Arts.

J. W. BAILEY

Sigma Nu

LYNN HAVEN, FLORIDA

Vice-President—Law.

MARTHA PRATT

Pi Beta Phi

ST. PETERSBURG, FLORIDA

Secretary—Liberal Arts.

CHARLOTTE FARRINGTON

Pi Beta Phi

FORT LAUDERDALE, FLORIDA

Secretary-Treasurer—Law.

R. GRAY VAN DEVENTER, JR.

Phi Delta Theta

SPENCER, INDIANA

Treasurer—Liberal Arts.





JOSEPHINE ABBOTT

Delta Delta Delta

DE LAND, FLORIDA

ELVIN A. BASS

Delta Sigma Phi

WEST PALM BEACH, FLORIDA

VIVIAN BECK

Alpha Xi Delta

ST. PETERSBURG, FLORIDA

MARY BRISCOE

Pi Beta Phi

BLOOMFIELD, NEW JERSEY

MINNIE CHALFIN

OWENSBORO, KENTUCKY

FRANCES COPELAND

Pi Beta Phi

ST. PETERSBURG, FLORIDA

ALBERT E. COX
Delta Sigma Phi
JACKSONVILLE, FLORIDA

CYRUS CRESSY
DE LAND, FLORIDA

J. L. DREW
Delta Sigma Phi
WEST PALM BEACH, FLORIDA

HELEN DUTTON
Pi Beta Phi
DE LAND, FLORIDA

JEWEL EDMUNDS
Alpha Xi Delta
DE LAND, FLORIDA

LILLIAN EVERSOLE
Pi Beta Phi
LEXINGTON, KENTUCKY





NANCY LEE FOUNTAIN
Delta Delta Delta
DE LAND, FLORIDA

ELIZABETH GARRISON
SANFORD, FLORIDA

J. DON GEIGER
Sigma Nu
ZEPHYR HILLS, FLORIDA

LAURINE GOFFIN
JACKSONVILLE, FLORIDA

ELINOR DIXON GOLDMAN
BALTIMORE, MARYLAND

HELEN HARRISON
Delta Delta Delta
PALMA SOLA, FLORIDA

LOIS HON

Pi Beta Phi

DE LAND, FLORIDA

MARY V. HOUSTON

HARDWICK, VERMONT

JACK L. JOLLY

Sigma Nu

DE LAND, FLORIDA

DOUGLAS KING

Pi Kappa Phi

SANFORD, FLORIDA

MARJORIE LANDPHERE

Pi Beta Phi

BLOOMINGTON, ILLINOIS

MARY LEDDY

Alpha Xi Delta

MIAMI, FLORIDA





ALINE LINK
Pi Beta Phi
TAMPA, FLORIDA

P. F. MAGUIRE
Sigma Nu
PLAINFIELD, NEW JERSEY

GEORGE Y. McCURDY
Sigma Nu
ARCADIA, FLORIDA

HARRIET MUNN
Pi Beta Phi
PORTAGE, OHIO

MARION O'KELLY
Delta Sigma Phi
JACKSONVILLE, FLORIDA

MARGARET ORR
SPRINGFIELD, ILLINOIS

MARGARET QUIGLEY
Alpha Xi Delta
DE LAND, FLORIDA

ALBERT REES
DE LAND, FLORIDA

JOSEPH REINA
TAMPA, FLORIDA

DEBORAH SMITH
LAKE CITY, FLORIDA

G. EDWIN SMITH
Sigma Nu
DE LAND, FLORIDA





HELEN STRAW
PAULDING, OHIO

ZEPHYR THORPE
OSWEGO, NEW YORK

ALICE VAN CLEEF
Delta Delta Delta
GLENWOOD, FLORIDA

W. THEODORE WOODARD
DE LAND, FLORIDA

DOROTHY YOUNG
PLANT CITY, FLORIDA



Sophomore Class

MERLE PARK
Delta Delta Delta
NEW SMYRNA, FLORIDA
Class President—Liberal Arts.

E. P. ALLEN
MINNEAPOLIS, MINNESOTA
Class President—Law.

GWIN ALDERMAN
LAKESVILLE, MISSISSIPPI

WILLIAM VON AMERONGEN
Sigma Nu
DE LAND, FLORIDA

FREDERICK E. BURT
Sigma Nu
ANN ARBOR, MICHIGAN

MABRY CARLTON
Delta Sigma Phi
DE LAND, FLORIDA

MATRED CARLTON
Alpha Xi Delta
WAUCHULA, FLORIDA

JOHN B. CLEMENT
Kappa Sigma
TRENTON, NEW JERSEY





GERTRUDE CONTOIS

Pi Beta Phi

PEORIA, ILLINOIS

RUTH DAVIS

INDIANAPOLIS, INDIANA

BRUCE W. DEDGE

Delta Sigma Phi

MIAMI, FLORIDA

PETER FRISCIA

TAMPA, FLORIDA

MARIAN GEORGE

Pi Beta Phi

LISBON, OHIO

DOROTHY GRAHAM

WILKINSBURG, PENNSYLVANIA

MARY LOU GROVE

MIAMI, FLORIDA

GRACE HALDEMAN

Pi Beta Phi

LAKELAND, FLORIDA

PIERCE N. HARTFORD

Delta Sigma Phi

LACONIA, NEW HAMPSHIRE

PHYLLIS HAZEN

DE LAND, FLORIDA

CHARLES HENDERSON

Pi Kappa Phi

SANFORD, FLORIDA

CHARLES HILL

Sigma Tau Delta

LAKE BUTLER, FLORIDA

BARBARA HINES

Pi Beta Phi

MIAMI, FLORIDA

EVELYN HODGES

Pi Beta Phi

MARTINSBURG, WEST VIRGINIA

JAMES TRAVER HOOKS

Sigma Nu

PELHAM, GEORGIA

CHAUNCEY JOHNSON

Pi Kappa Phi

DETROIT, MICHIGAN





ADELIA KEEN

Alpha Xi Delta

MIAMI, FLORIDA

DOROTHY KURTZ

Pi Beta Phi

OBNEY, ILLINOIS

CHRISTINE LANTZ

DE LAND, FLORIDA

DORIS LAW

DE LAND, FLORIDA

EDWARD MARSH

Pi Kappa Phi

MIAMI, FLORIDA

DOROTHY MAY

Delta Delta Delta

WORCESTER, MASSACHUSETTS

BLANCHE MERCER

Delta Delta Delta

DE LAND, FLORIDA

ROLAND F. MIETUS

MILWAUKEE, WISCONSIN

L. A. MOONEY
Delta Sigma Phi
MIAMI, FLORIDA

MARY REESE ROYAL
Alpha Xi Delta
DE LAND, FLORIDA

HARRIS SIMS
Pi Kappa Phi
MANATEE, FLORIDA

J. THOMAS SMITH
Pi Kappa Phi
MACON, GEORGIA

MARGUERITE SMITH
Delta Delta Delta
DE LAND, FLORIDA

C. EVERETT STRADLEY
Sigma Tau Delta
DE LAND, FLORIDA

CECIA MAE STUART
STUART, FLORIDA

REBA SWIFT
MIAMI, FLORIDA





EVELYN TAYLOR

Delta Delta Delta

DE LAND, FLORIDA

AUDREEN THOMPSON

BURLINGTON, IOWA

HELEN WATSON

Delta Delta Delta

NEW SMYRNA, FLORIDA

W. THEODORE WHEELER

DE LAND, FLORIDA

MARY WHEELER

DE LAND, FLORIDA

THAD WHIDDEN

WAUCHULA, FLORIDA

SYBIL WILLIAMS

Alpha Xi Delta

THOMASVILLE, NORTH CAROLINA





AMSTRONG



ANDERSON



ANLEY



BAILEY



BAKER



BETHEL



DIXON



BOTTS



BAMSON



BADIER



BROWN



CARLTON



CHURCH



CLARK



COBB



DANIEL



DAVY



DEIGHTON



FEARINGTON



GIBBON



GILL



GOODMAN



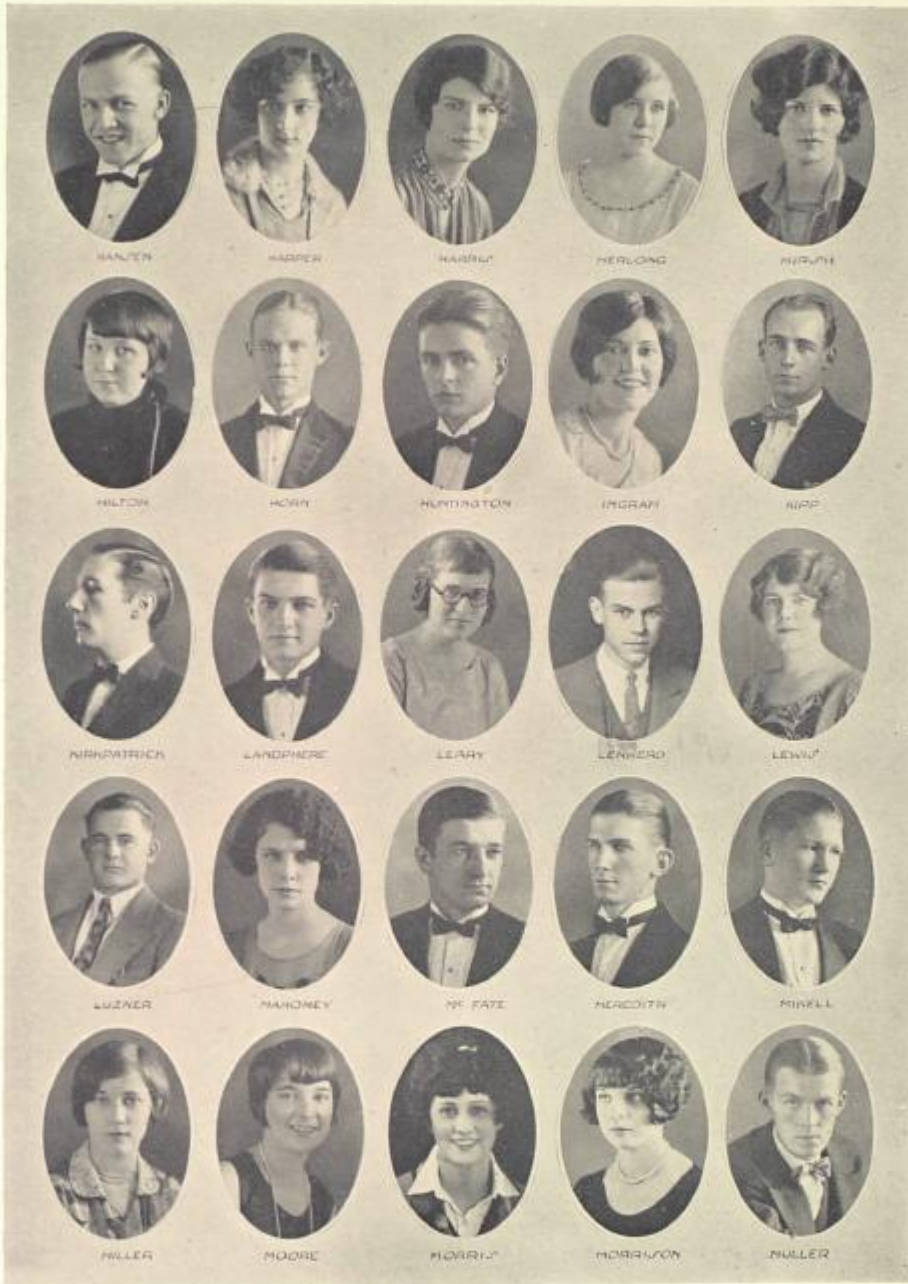
GRAY



GROVE



HALL







Freshman Class

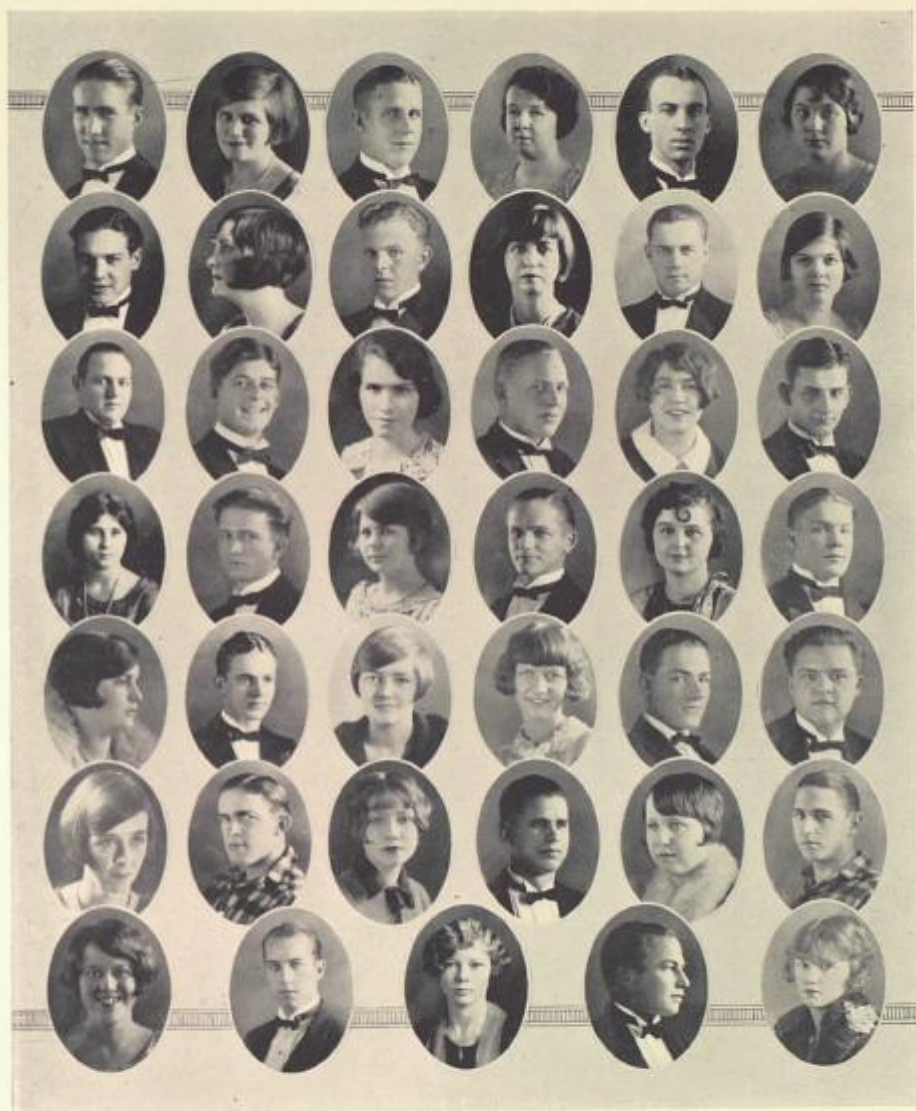
OFFICERS

BERT EUSTICE	<i>President</i>
VIRGINIA CULBERTSON	<i>Vice-President</i>
MURRAY HALL	<i>Secretary</i>
CHARLES BEAL	<i>Treasurer</i>

MEMBERS

- | | |
|-----------------------|----------------------|
| ABBOTT, ISABELLE | COURSON, SARAH |
| ANDERSON, ISABEL B. | CRAIG, FRANCIS |
| ANDERSON, JAMES M. | CRENSHAW, HELEN |
| BAKER, RUTH | CULBERTSON, VIRGINIA |
| BAILEY, NELLIE | DANCER, HELEN |
| BARNES, LAURA | DANIELS, ROBERT |
| BAUGHMAN, MARY | DAVIS, DOROTHY |
| BAUMAN, FERNE | DAVIS, RUTH |
| BEAL, CHARLES | DAVIS, SARAH |
| BERKELMAN, KATHERINE | DEIGHTON, EVELYN |
| BETHELL, MARY FRANCES | ENTENZA, PAULINE |
| BOHON, JULIA HOWE | EUSTICE, BERT |
| BOTTS, MILDRED | FAULKNER, LOUISE |
| BOWEN, MABEL | FEARINGTON, DOROTHY |
| BRANDON, ANNE | FLEENER, JOHN T. |
| BRASWELL, EMILY | GIBBINS, DOROTHY |
| BRAZIER, DELMA LEE | GILBERT, MARGARET |
| BROKAW, MARTHA | GILL, JOHN |
| BROWN, WILBUR B. | GOODMAN, HELEN |
| BURDITT, RUTH E. | GRAY, HORACE |
| CONTOIS, GERTRUDE | GROVE, MARY LOUISE |
| CARLTON, MAURICE | HAINES, HARRIET |
| CARR, JAMES W. | HALL, MARTHA |
| CARTER, JAMES L. | HALL, ROBERT MURRAY |
| CHURCH, MARY RUTH | HANSEN, MARY |
| CLARK, GEORGE B. | HANSEN, RALPH |
| COBB, WILLIAM A. | HARPER, ALINE |
| CONKLIN, J. DALE | HARPER, EVELYN |

HARRIS, ELINOR	PENROD, CLARENCE
HAYS, CHESTERFIELD	PIPPIN, LOUISE
HERLONG, DIXIE	POPE, HAROLD
HILTON, MARJORIE	POWERS, JEAN
HILTON, MINNIE	RANKIN, ELINOR
HIRSH, ALMA	RAU, SARA
HONEYWELL, GLADYS	RICHARDSON, IDA
HOPKINS, FRANCES	RIDDICK, RUTH
HOUSMAN, BERT	RIFFLE, LADOIT
HUMPHREYS, ANNIE MAE	ROBINSON, HARRY
HUNTER, ETHEL	ROSENTHAL, ROY
INGRAM, LOUISE	ROUSE, FAY
IRVIN, COLINA	SALISBURY, ETHEL
KAISER, THOMAS	SELF, GEORGIE
KEENE, RUSSELL	SHELTON, GLADYS
KING, LINA	SHORE, LOUISE
KIPP, ORVAL	SIMMONS, PAUL
KIRKPATRICK, ROBERT	SIMPSON, LORNA
KNIGHT, FLOYD	SIMPSON, MARION
KNOEFEL, ARTHUR	SINGER, SILVIA
KNOX, PHILANDER CHASE	SISTRUNK, DON
KURTZ, DOROTHY	SMITH, CHARLENE
LANDPHERE, MAX	SMITH, EMILY
LAW, JOHN	SMITH, LYRA
LEARY, LILLIE	SQUIER, T. M.
LINKERD, CHARLES	STUART, FREDERICK E.
LEWIS, FORREST	STUART, JOHN
LEWIS, JAMES	TAETS VAN AMERONGEN, GERARD
LEWIS, NADA	THIOT, MARY HOLMES
LIESEGANG, HELEN	THOMPSON, AUDREENE
LOCKHART, KATHLEEN	TOWNE, FRANKLIN
LORD, CONSTANCE	TREA, EDWARD
LUZ NOR, JOHN	TUDOR, GLADYS
MAHONEY, MURIEL	TURNER, GRACE
MAY, DOROTHY	TYLER, THEODORE
MCAULAY, ALYCE LEE	UEZZELL, ANNA
McFATE, JAMES	WADE, CLARICE
MEREDITH, ZERNEY	WAGG, J. STANLEY
MIDDLETON, CLYDE	WASHBURN, REUBEN
MIKELL, ROBERT FELTON	WATSON, CHARLES
MILLER, LORING	WEDEKING, MIRIAM
MILLER, ORA	WEEKS, GLADYS
MILLER, ROSALYN	WILKERSON, FRANCES
MIMS, ELSIE	WILKEY, KATHERINE HUNTER
MORRISON, MARGARET	WILLIAMS, ELIZABETH
MOUGH, PAUL	WILLIAMS, HELEN
NEWBERRY, FRED	WILLIAMS, THOMAS
OLSON, MERLE	WINGATE, OUIDA
OULMAN, HAZEL	WINSEMAN, ALBERTA EMILY
OWENS, FRED	WINTERS, ALLEN
PATTEN, LAUNA	WRIGHT, CLARENCE
PAUL, NELSON	ZACHRY, RHODA
PEEPLER, ALEXINE	ZEIGER, BEATRICE



College of Business Administration

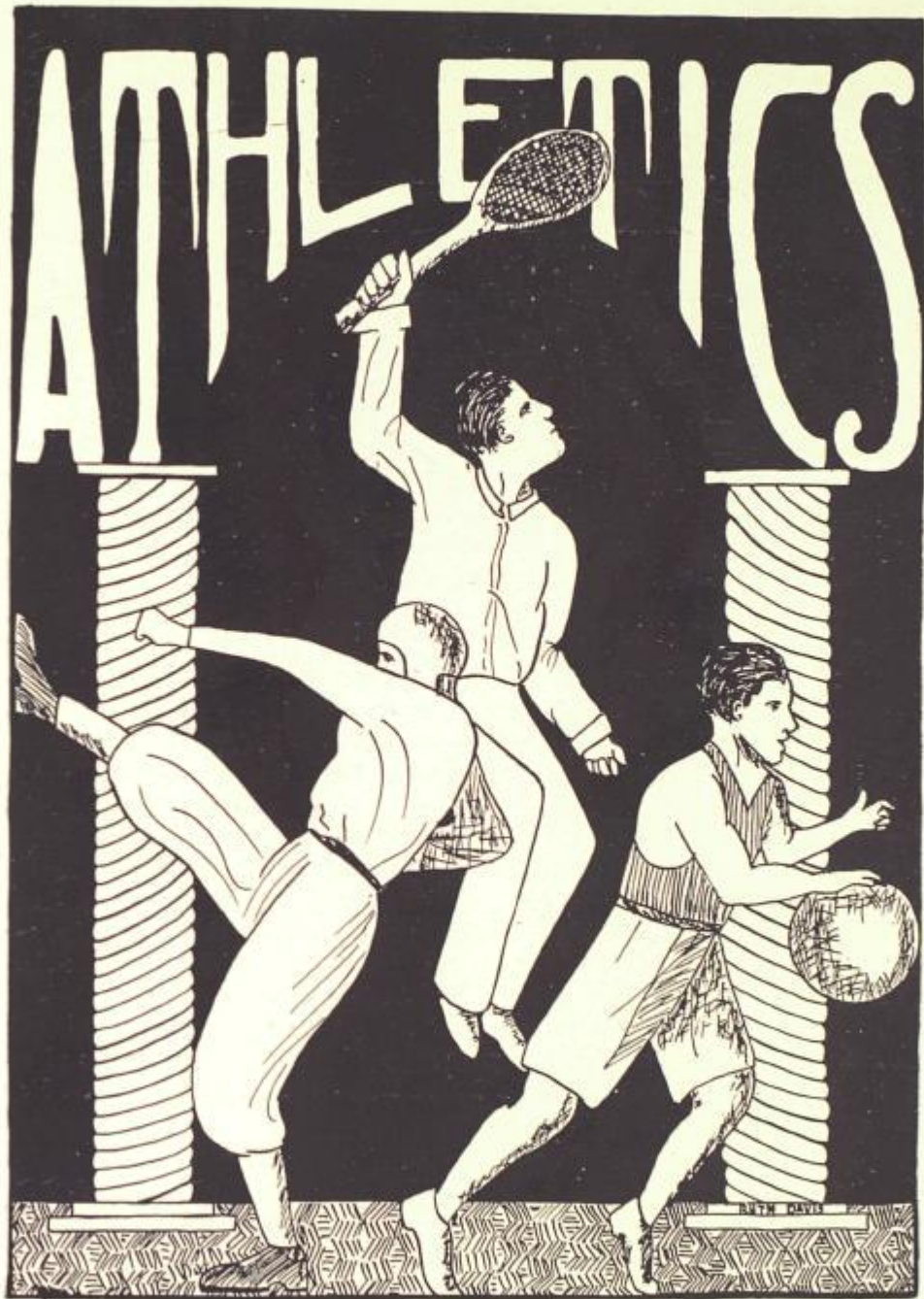
Business College Roll

HON, CECIL RAY	GROVE, MARY LOUISE
ARP, WILBUR	HANSEN, MARY
CARPENTER, EDWARD	HARKINS, RAYMOND
GILES, ROGER	HAWKINS, J. R.
NUNAMAKER, ROYAL O.	HILTON, MARJORIE
OVERSTREET, ELIZABETH	HORNE, RUSSELL
BERNARD, LAURENCE	IRVIN, COLINA
CARLTON, JOHN S.	JACOBS, CARL
CARR, GRAFF	KAISER, THOMAS
DEATON, GEORGE	KEEN, RUSSELL
FAULKNER, HELEN	LANGFORD, LOUISE
GROSS, JAMES H.	LENKERD, CHARLES A.
HILL, CHARLES STEWART	LEWIS, FORREST
HODGES, EVELYN	LIESEGANG, HELEN D.
JOHNSON, CHAUNCEY	LORD, CONSTANCE
MULLEN, HENRY CLARK	McFATE, JAMES
RICHARDSON, EUGENE	MEREDITH, ZERNEY
ROBERSON, F. PERRIN	MIMS, ELSIE
WALKER, ROSS FOSTER	MOUGH, PAUL
BALDI, RAYFIELD	PAUL, NELSON
BARNES, LAURA	POPE, HAROLD
BERKELMAN, KATHERINE	ROBINSON, HARRY J.
BRASWELL, EMILY	RODGERS, OSWALD
BROKAW, MARTHA	SALISBURY, ETHEL MAE
BROWN, WILBUR	SELLERS, R. D.
CARR, JAMES	SHORE, OPAL
CARTER, JAMES	SIMPSON, PAUL
CONKLIN, DALE	SMITH, CHARLENE
COURTNEY, LEVI	SMITH, CHARLOTTE
CRENSHAW, HELEN	SQUIER, T. M.
DAVIS, DOROTHA	TOWNE, FRANKLIN
DAVIS, MAXWELTON	TREA, EDWARD M.
FLEENER, JOHN T.	TUDOR, GLADYS
FLOWERS, J. W. R.	WATSON, CHARLES
FREEMAN, CHESTER	WILKERSON, FRANCES
GILL, JOHN ALLEN	WILLIAMS, THOMAS
GOULD, FRANK G.	WINSEMAN, ALBERTA



Book 11

Athletics



Football Schedule for the Fighting Hatters

JOHN B. STETSON UNIVERSITY

- September 26—Camp Benning at Columbus, Georgia.
 October 2—Palmer College at De Land, Florida.
 October 10—Norman Institute at De Land, Florida.
 October 17—Freshman vs. Varsity at De Land, Florida.
 October 24—Georgia A. & M. at Tifton, Georgia.
 October 31—Springhill College at Mobile, Alabama.
 November 7—Carson-Newman at De Land, Florida.
 November 14—Newberry at De Land, Florida.
 November 25—Tennessee State College at De Land, Florida.
 December 6—Daytona Athletic Club at Daytona, Florida.

THE FOOTBALL SEASON OF 1925

Under the leadership of Coach H. R. McQuillan, the Hatter team was built up to near perfection. There were more difficult conditions to be overcome than the team had met heretofore. Since Stetson had become a member of S. I. A. A., the Freshman material could not be used in some of the games. But this only spurred the varsity on in their fight for victory. The games played represent colleges of similar number of students to those in Stetson. They also represent a good portion of the southeastern part of our country. The Hatters made two out-of-state trips, playing in Georgia and Alabama. But on our own soil they met football men from Georgia, South Carolina, North Carolina, and Tennessee. The season ended with five victories, two defeats and one tie on the record of the Hatters. From the material which was trained in the Freshman squad together with the varsity men who will return, there will be much material from which the Hatters for next season may be drawn. Membership in the S. I. A. A. will also give us a wider range of games, playing colleges of our standing and size. The next year holds for the Hatter squad a bright prospect for a victorious and all-round successful season.



DON GEIGER

H. R. McQUILLAN

DON GEIGER

To the captain of the Hatter team is due the title—The Most Popular Boy on the Campus of Stetson University. Elected on merits as a football man and well liked fellow, Don has maintained that popularity. On the defense and offense Don was the Tower of Strength to whom much credit is due for the glories of the past grid season.

COACH McQUILLAN

The second year of the athletic career of the coach of the Hatter teams has proved his marked ability even more than his first year. With scanty material at the first of the year McQuillan developed an eleven which closed the season with an enviable record. In the Freshman material he developed stars for the coming years. With the S. I. A. A. requirements to meet, which only permitted the use of varsity men in many of the games, his position as coach has been more difficult than in previous years. As a tribute to his ability and energy Coach has the admiration and esteem of his team and the whole student body.

MANAGER TATUM

To the end to make ends meet, Sledge Tatum has proved his managerial art in the past season. Much of the credit due for the season's success falls to Tatum for his work in perfecting the schedule and attending to the necessities of the Hatter team.

51 CAMP BENNING v. STETSON 7

On the territory of the enemy Stetson met her first defeat. The Camp Benning team was made up of stars picked from a multitude of vigorously trained men who knew the game. No small credit is due the Hatters since they were able to score against such an aggregation.



COURTNEY

FREEMAN

BERNARD

DERBYSHIRE

LEVI COURTNEY

Having served three years on the squad, in his fourth Spot will lead his team. As captain, the Hatter half-back will mark his course with even more dash toward the goal. Yardage and pretty broken field running, along with all the qualities of a good football man, mark Captain-elect Courtney as an outstanding man on the Hatter eleven.

CHET FREEMAN

For the second time Chet stars in the Hatter's records. Clever play, with the fight he put into the game, marked his efforts. Many baffling recoveries with a touch-down to the Hatter's credit were the results of his keen playing. Both at the end and halfback positions Chet was on the job for the glory of the Hatters.

LARRY BERNARD

The consistent playing of Larry at quarter shows his football ability. With a stride that defied the opponent, Larry gained yard after yard for Stetson in the hardest games. In several games Larry was one of the starring players.

DONALD DERBYSHIRE

This past season was Derby's first appearance on the Stetson athletic field. His work this year shows that the varsity will have more keen competition in the backfield for the 1926 season.

13 PALMER v. STETSON 34

In a game full of pluck and fight, the lads from Palmer College met defeat at the hands of the Hatter squad. This was the first game played on Cummings Field this season.

o NORMAN INSTITUTE v. STETSON 16

The next game of the season was played on the home field. The Normandy team put up a hard fight but they were unable even to score against the overwhelming Hatters.



TOM KAISER

CHARLIE TRIBBLE

NAT O'KELLEY

TOM SMITH

TOM KAISER

Another new man for the Hatter squad was found in gaining a hard fighting end in Tom Kaiser. He played with the determination of "They shall not pass," and for the Hatter squad proved to be an invaluable asset.

CHARLIE TRIBBLE

Charlie Tribble, a good end, better guard, and best at the center position, which was his position for the games of the past season, proved the fight that a four-year man with school spirit has. 'Tis hard to pay sufficient tribute to a four letter man in the football squad—the only one possessing such an honor.

NAT O'KELLEY

Boas was a tower of strength to the line at the tackle position. His second year shows that even more development will attend his future career on the squad. On the offense and defense he showed the advantage of hard playing. He was a real asset to the team at play.

TOM SMITH

Tom, at end, for the first year on the team was one of the hard fighting Hatters. He materially aided in the play of the season. His ability promises a substantial fight to any opposition for the end position.

6 FRESHMEN v. VARSITY 10

The first game between the local squads of the Varsity and Freshmen gave the Varsity a little prestige by holding four points above the Frosh.

0 GEORGIA A. & M. v. STETSON 18

The Aggies and Mechanics of Georgia found the score against them when they had Stetson entertain them on their "Pa-Ma" day. Number 13 of the Hatter team aroused no little ire from the eager fans for the Aggies.

5 SPRING HILL COLLEGE v. STETSON 6

With one point to their credit, the Hatters brought back the bacon from the Alabamians of Spring Hill. The game was one of the very best in the Hatter schedule. Until the whistle blew it was uncertain in whose favor the balance would lie.



J. C. BARNES

ROSY FLOWERS

DICK GOLDMAN

SALTY WILLIAMS

J. C. BARNES

Alabama Barnes with his speed and hard playing, though laid up for some of the season by injury, was a hard fighting Hatter. The Hatter squad in him will find good material for the ensuing year.

WILLIAM R. FLOWERS

Rosy Flowers at guard and center for a second season showed the fans a good game of football. Hard fight and consistent play were his in aiding the Hatter team on to victory.

DICK GOLDMAN

In the backfield a new man to the squad showed the material which the varsity will use next year. Dick with his pluck hit the line for yardage and was consistent in gaining. The opponent found in his work much to buffet.

SALTY WILLIAMS

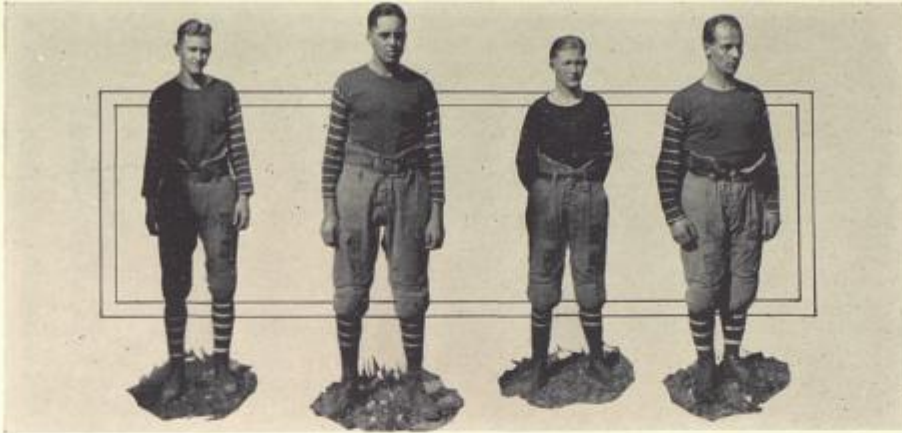
Salty on the job at guard showed the mettle of the ability to safeguard the backfield against invasion and laid open the way for advance making the opponent wonder where the ball was going the next time.

o CARSON-NEWMAN v. STETSON o

Carson-Newman gave the Hatters the fight of their lives. Each team equally playing, the game see-sawed from one field to the other threatening the goal of the other until the referee blew the whistle for the end of the game.

20 NEWBERRY v. STETSON o

The South Carolinians invaded our territory with a determination to make amends for their loss of the previous season, and with fight set the Stetsonites back. This was one of the games in which the Hatters were not allowed to draw from the entire force of their men, hence to some extent were weakened, but despite the loss the men kept up their fighting spirit throughout the entire game.



DANIELS

EUSTICE

MIKELL

KIPP

BOB DANIELS

Bob, in his first year out for the Hatter squad, played the end position with skill that would have been a credit to a much more experienced player. Bob is going to be a hardy contender for the end position next year.

BERT EUSTICE

At guard and tackle Bert showed wonderful mettle as a football player. Consistent hard fighting and spirit gave his opponent much to worry about. They will get even more support from Bert in the next season.

MIKELL

At quarter Mikell showed the head of a general in tactics and played a hard game with speed and dash that shows added material for the varsity next year.

ORVAL KIPP

Kipp played the game of football with hard and consistent fighting. At the half-back position he was ready with the squad to advance into the enemies' territory and produce havoc. Such good Freshman material for the varsity looks good for the 1926 season.

o TENNESSEE STATE COLLEGE v. STETSON 10

From the mountains to the plains, the Tennesseans journeyed for an enjoyable Thanksgiving. But they went back without the victory. In this game the best of the material of the squad went into the play. Every man played his best in the last college game of the season. In this game Kaiser and Smith held the ends, Geiger and O'Kelley were tackles, Wright and Hall at guards, and Tribble at center. These all make for the strength of the line. In the backfield Baldi at full, Chet Freeman at half position, and Spot Courtney and Larry Bernard at guards played the part of the horsemen. Throughout the games substitutions made the game interesting to all the players. Thus ended the collegiate season with victory.



WILLIAMS

BUCK
WILLIAMS

HALL

Though Williams was laid up with a sprained ankle for the greater part of the season, while he was functioning he gave a great fight for the halfback berth.

BUCK

Kern Buck was a hard fighter at quarterback. The season at this position showed what a novice at the sport can accomplish with hard work.

HALL

At the guard position Hall showed the fight of an old timer, and did good work for the Hatters.

WRIGHT

Wright was another guard of whom the team was justly proud. The machinery of the team was greatly benefited by his hard and consistent playing.

LANDPHERE

Max Landphere at guard merits praise for his untiring and constructive work for the Hatters.

ROYALL

Norman Royall, though a new and inexperienced man at guard, gave fight and was valuable in the building of the machine of the gridiron.

o DAYTONA ATHLETIC CLUB v. STETSON 26

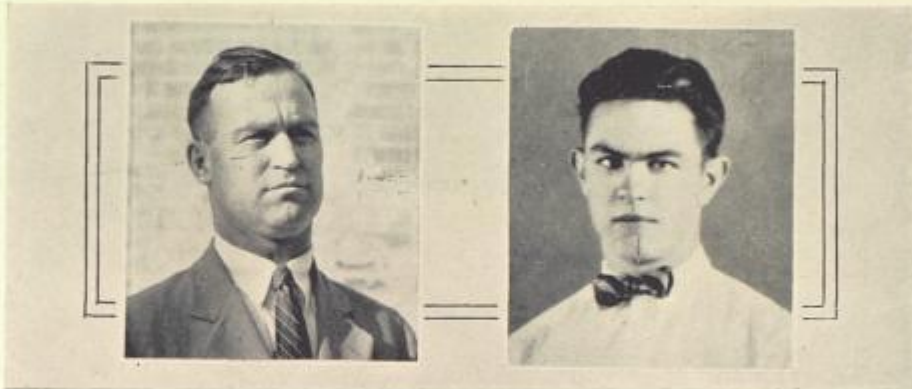
When the official season had closed the boys hated to give up the pig skin, so a game was scheduled with the athletes of Daytona. The last game was another victory for the Hatters of 1925.



LANDPHERE

ROYALL
1926

WRIGHT



COACH MCQUILLAN

CAPTAIN SMITH

Hatter Basket-Ball Schedule, 1926

Stetson	24	Daytona Athletic Club . . .	32
Stetson	20	University of Florida . . .	21
Stetson	33	Rollins	18
Stetson	39	Southern	8
Stetson	17	Tampa Imps	15
Stetson	42	Rollins	11
Stetson	61	Southern	9
Stetson	32	Tampa Imps	18
Stetson	40	Daytona Athletic Club . . .	8
<hr/>		<hr/>	
Total Points	308	Total Points	140

The above results were the efforts of a hard and fast working squad, who had the old fight of '76 in their blood. The schedule included the best teams in the state, and yet Stetson only lost two games out of the nine. Both of the games lost were in the very early part of the season before the team was whipped into shape. But all foes after the first two conflicts were at the mercy of the Hatters. A great deal of credit is due the Freshman team. In that number were many men who might have held down varsity positions had they been eligible. Under a S. I. A. A. schedule, with a team made up of the combined materials of the varsity and Freshmen, we should be able to meet any team in the Southern states. This year the Hatters qualified as state representatives among the smaller colleges for the S. I. A. A. tournament at Greenville. Though the Hatters lost out in their first appearance, greater success is expected next year.



CHARLIE TRIBBLE

TOM SMITH

CHET FREEMAN

CHARLIE TRIBBLE

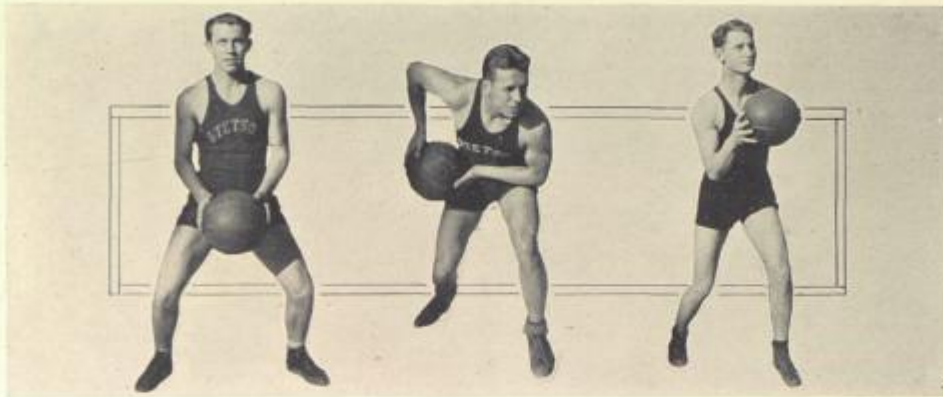
Charlie, with other years of basket-ball to his credit, found it hard to drop out of the game for the season, so he resumed his position at the standing guard. As a guard he maintained a bulwark that defended the goal from the invasion of the enemy. The same old fight of football and the other sports in which Charlie stars was manifest in basket-ball.

TOM SMITH

The captain for the season '26 was forwarding the mail to the basket. Outside of playing a hard game, Tommy was consistent and worked for the advantage of the team. With plenty of fight and pep Tom led the basketeers in many of the games to victory. In the losing games he was just as good a sport in keeping up the spirit of the team. Tommy for three years has given his best to basket-ball.

CHET FREEMAN

Chet a second time appeared for the varsity at the running guard position. He kept the enemy always in suspense, wondering to whom he would next give the ball. While playing the guard position, with his clever shooting, he added substantially to the scores of the Hatters.



MARSH

CROMBIE

NUNAMAHER

ED MARSH

The forwards of the team were well pushed for their positions by Ed's hard and fast game. Ed was ready any minute to take the position of forward. His work in the games proved his increased ability to play the game. With Marsh in the game, the next year promises any who may covet the forward position a hard fight for the first position.

STEVE CROMBIE

Another forward of the varsity squad is Steve. He is consistent, and hard working in the game of the baskets. Though neither a high point man nor the first man for the forward position, Steve was always ready for the fight of the game, and upon entering added pep for the team work.

NUNAMAHER

A new man to the college and basket-ball realm with the Hatters, was Nunny. Holding the center position without competition, he was clever with the science of the game. Soon after arriving he fitted in well with the squad and turned out to be one of the high scorers of the group.



LARRY BERNARD

At the forward position Larry handled himself in an excellent manner as a good shot and a consistent floor man. He had played one season with McQuillan's tactics. Larry was consistent, always playing for the advantage of the team.

JIMMIE GROSS

Safeguarding the team from lack of material, Jimmie went on the floor with the determination to make a place on the squad. Without previous experience in the basket-ball realm, he won distinction, and is in line for the next guard. Jimmie played a hard game, and added a lot of pep to the squad.

NORMAN ROYALL

Another new man to the basket-ball court was Norman Royall. New in the game he plugged until it was recognized that with a little more experience in the game there will be strong competition for those seeking varsity berths with the Fighting Hatters.



Co-Ed Basket-Ball

The season started unpropitiously for the Eulalians due to the lack of trained material. Coach Bowen had charge of the girls at the first of the season, but was unable to continue his work. For the remainder of the season Click Mullens coached. Only three letter girls were back. Two of these were at the forward positions. The rest of the material was to be developed.

The first foe to greet the Stetson Eulalians was the Purple and White of Gainesville High. This was a crack team made up largely of all-state players. Stetson met defeat after a closely contested battle.

Next came the New Smyrna Lassies, contenders for the state championship last year. Due to a non-agreement between the officials of the respective teams, the game was called off.

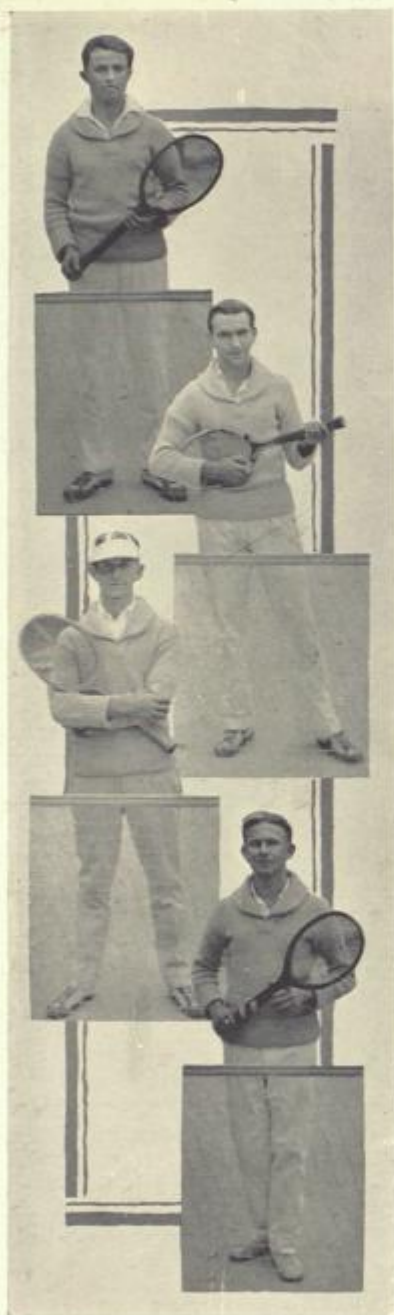
Later the Stetson girls were defeated by Orlando. They then met Wauchula on their own court. Their team, well named, The Wildcats, played Stetson a fast and brilliant game. Stetson dropped the score in the last half by a very small margin.

Next year is more promising for the Eulalians. A majority of the girls will return, and with the team work already developed, the team will make a much better showing against its opponents.

Miss Harrison proved to be a most capable manager and a consistent player on the squad. Captain Evelyn Luck played in excellent form all season. Many times her pep and untiring spirit pushed the team forward. Miss Richardson was one of the best players of the squad, and many consider her a rival for the all-state forward position.

WINNERS OF THE "S"

Harrison, manager-guard; Luck, captain-forward; Richardson, forward; Lockhart, jumping center; Brokaw, running center; Hirsh, running center; Abbott, guard; Weeks, guard; McCauley, guard; K. Smith, guard.



The Tennis Team

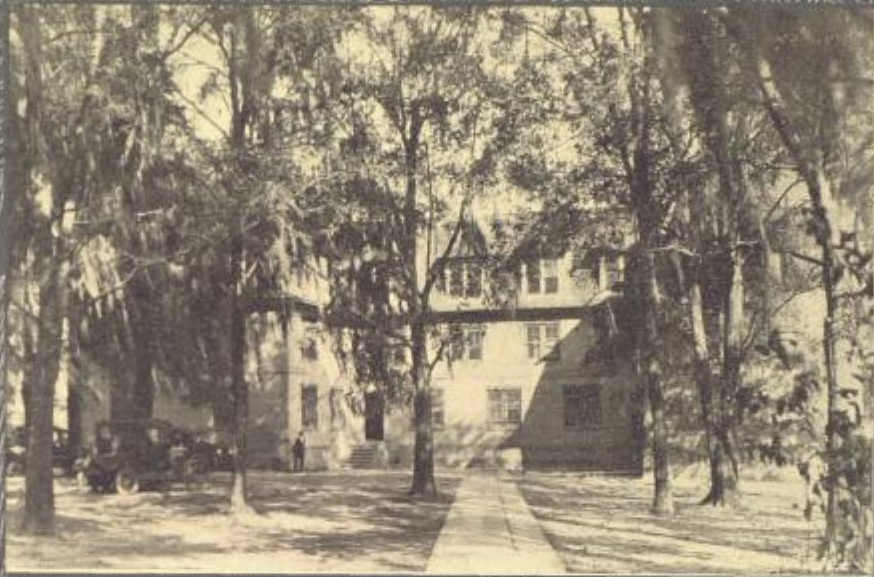
The Tennis Team is the group of men who were the winners in the intermural elimination contests. Those who won the laurels, and afterwards represented the Hatters in the racket game were: Zerney Meredith, Douglass King, Jack Ohlhaber and Stanley Culp. Keen competition showed the mettle of these men.

The Jacksonville team came up to our campus and took away all the honors both in the singles and doubles. However, the matches were close, and a return game was scheduled. At Jacksonville the four Stetson men showed a little better game. King won his set against Hunter, and Culp won over Dykers. Jacksonville defaulted one of the matches, thus making the score break even.

At Rollins, the Hatters defeated Rollins in all the matches except the double contest. On the return match Stetson Hatters took away all the honors of the matches.

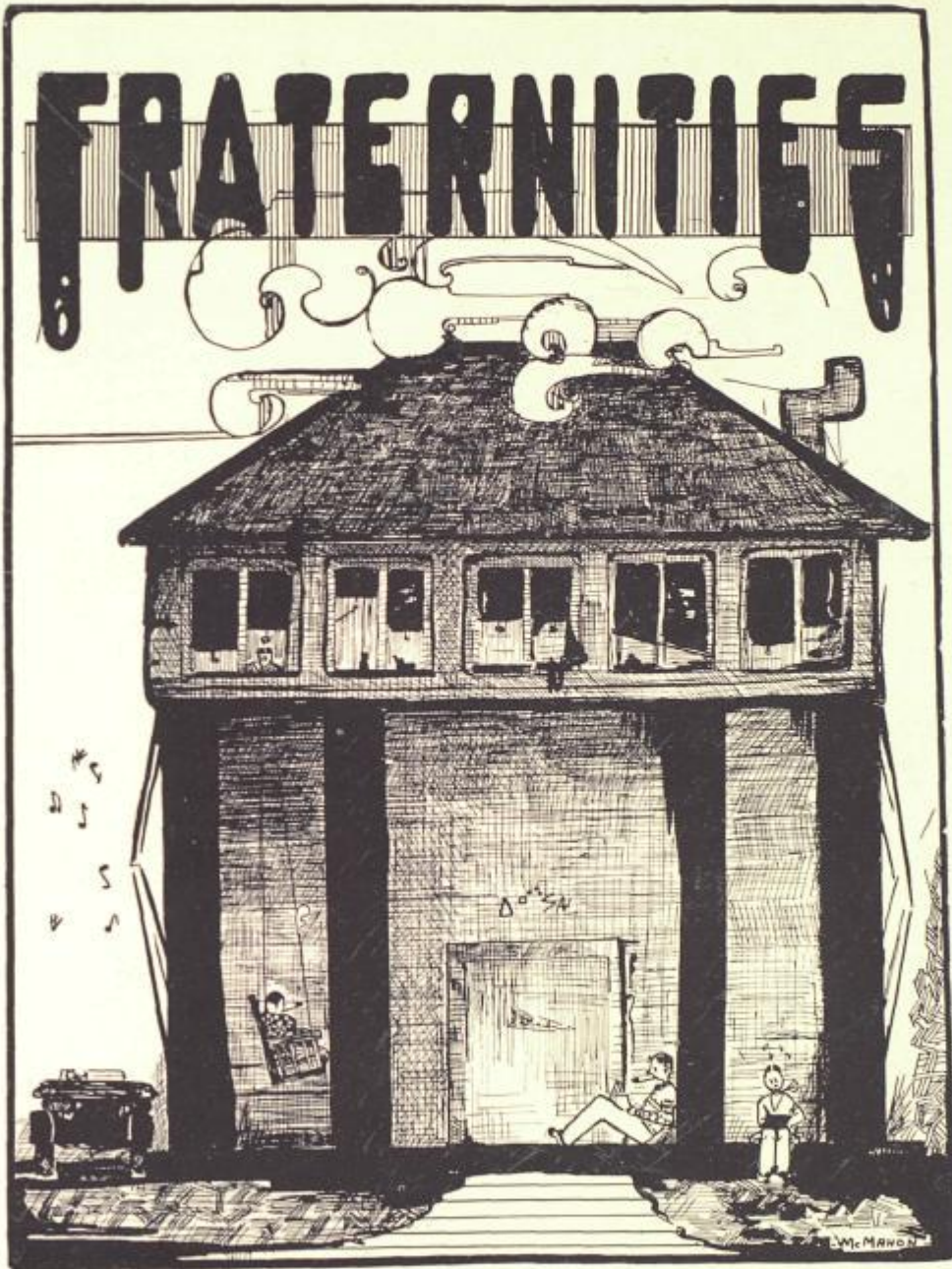
On the Daytona Beach courts, the battle for the intercollegiate honors of the state was fought. Florida University won the state singles and doubles. Stetson held all the honors not taken by Florida, as the runner-up in the tournament. Our team won other honors at Ormond Beach.

With projected improvements in the courts at Stetson, and with such men as Culp, King, Olson, Ohlhaber, and Meredith we have prospects of a very successful season next year.



Book 111

Fraternities









Sigma Nu Fraternity

Founded Virginia Military Institute, January 1, 1869.

Delta Mu Chapter Established 1913.

COLORS: *Black, White and Gold.*

FLOWER: *White Rose.*

CHARTER MEMBERSHIP

In Academia

R. P. WALTERS, Adviser
A. P. MEADOWS
R. D. SELLERS
C. R. RUNYON
J. T. ROSA
L. M. COURTNEY
J. L. JOLLY
C. F. HARRISON
M. R. DAVISON
J. C. BARNES
J. C. ROSS
C. H. GEITNER
P. F. MAGUIRE
G. Y. McCURDY
G. R. DEATON
H. C. POPE

J. D. GEIGER
H. L. ANDERSON
T. M. SQUIRE
P. C. KNOX
R. D. TROTT
F. W. BURT
J. W. BAILEY
W. AMERONGEN
G. AMERONGEN
C. HAYES
H. R. MILLS
M. R. HALL
J. S. SMITH
C. O. WRIGHT
F. L. LEWIS
C. R. A. GLADMAN

Pledges

T. J. KAISER

F. W. WALKER

J. H. GROSS

In Urbe

BERT FISH
ERSKINE LANDIS
RAY JORDAN
MURRAY SAMS
J. P. TATUM
F. P. WHITEHAIR
TOM JACKSON
R. S. MILLER

AUSTIN CONRAD
NEIL JACKSON
D. K. GUNBY
E. SMITH
D. G. HARGREAVES
J. E. POLLARD
W. LIPPERT
P. POWELL



Ψι Kappa Ψι Fraternity

Founded at the College of Charleston, 1904.

Chi Chapter Established 1921.

COLORS: *White and Gold.*

FLOWER: *Red Rose.*

CHAPTER MEMBERSHIP

In Academia

KERFOOT BRYANT
MAURICE WILLIAMS
JAMES W. CARR
DOUGLAS KING
CHESTER FREEMAN
LAWRENCE BERNARD
J. TOM SMITH
CHARLES T. HENDERSON
J. STANLEY WAGG
HARRIS SIMS
EDWARD HENDERSON

CHAN JOHNSON
SLEDGE TATUM
EDWARD A. MARSH
JOHN S. CARLTON
GEORGE B. CLARK, JR.
GALE HUNTINGTON
ROBERT WELSH
ROBERT DANIELS
THEODORE TYLER
BERT C. EUSTICE
FRED OWENS

FELTON MIKEL

Pledges

FRED STUART
LEWIS WALLACE

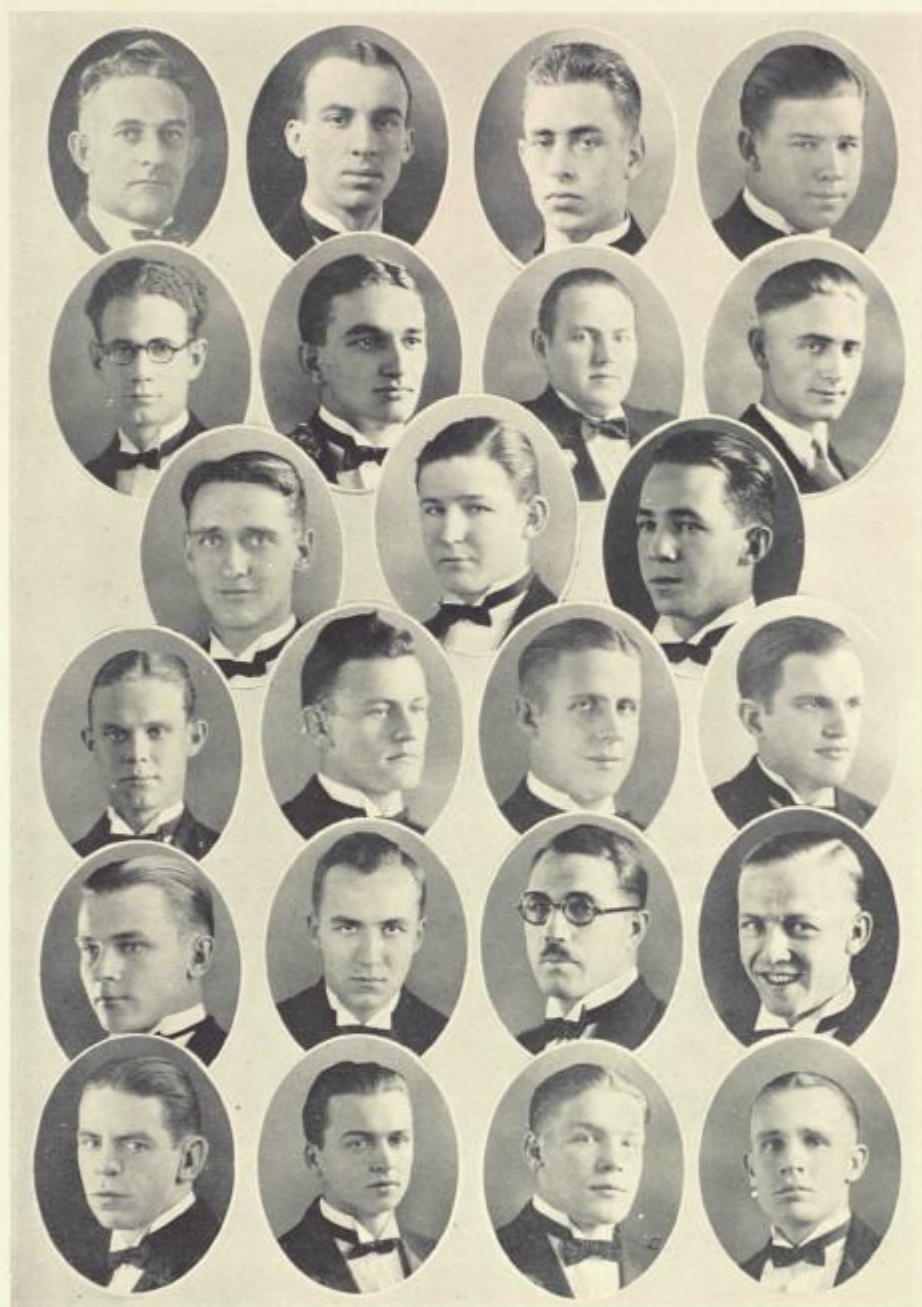
JAMES T. MCFATE
DONALD DERBYSHIRE

THEODORE M. HATHCOCK

In Urbe

CLATON C. CODRINGTON
CHARLES H. CAMPBELL, JR.
FRANK P. McLAIN
HAROLD A. SCHUBIGER
FRANKLIN TALTON
WILLIAM J. RHODES (Pi)
A. R. PRATHER

MAJOR W. G. S. LOWE
MELL D. SMITH
EDWARD W. CLARK
EDMUND HOGLE
BEATTY INGLIS (Omicron)
EDWARD C. CARPENTER
(Alpha Epsilon)



Delta Sigma Phi Fraternity

Founded College City of New York, 1899.

Alpha Chi Chapter Established May 15, 1925.

COLORS: Nile Green and White.

FLOWER: White Carnation.

CHAPTER MEMBERSHIP

In Facultate

LEWIS H. TRIBBLE

W. Y. MICKLE

HARRY C. GARWOOD

In Academia

C. RAY HON

CHARLES E. TRIBBLE

ELVIN A. BASS

JOYCE BOWEN

NATHANIEL O'KELLY

ALBERT E. COX

J. OLLIE ADMUNDS

W. Y. MICKLE

GEORGE S. CROMBIE

BRUCE W. DEDGE

CLARK H. MULLEN

LOOMIS B. SLATER

JAMES J. DREW

MAURICE F. FOSTER

F. PERRIN ROBERSON

LADOIT RIFFLE

MARION O'KELLY

WILLIAM R. FLOWERS

WILLIAM K. KING

JOHN A. GILL

HAROLD HAYES MEYERS

MAURICE F. CARLTON

MABRY K. CARLTON

LYNWOOD A. MOONEY

RALPH HANSEN

RUSSEL HORNE

PAUL MOUGH

PIERCE N. HARTFORD

BERNARD W. BROWN (pledge)

JOHN CLINTON (pledge)

In Urbe

DOSSIE C. HULL

ED. L. MICKLE

CLIFFORD BOTTS

TOM B. STEWART

E. S. ROBINSON

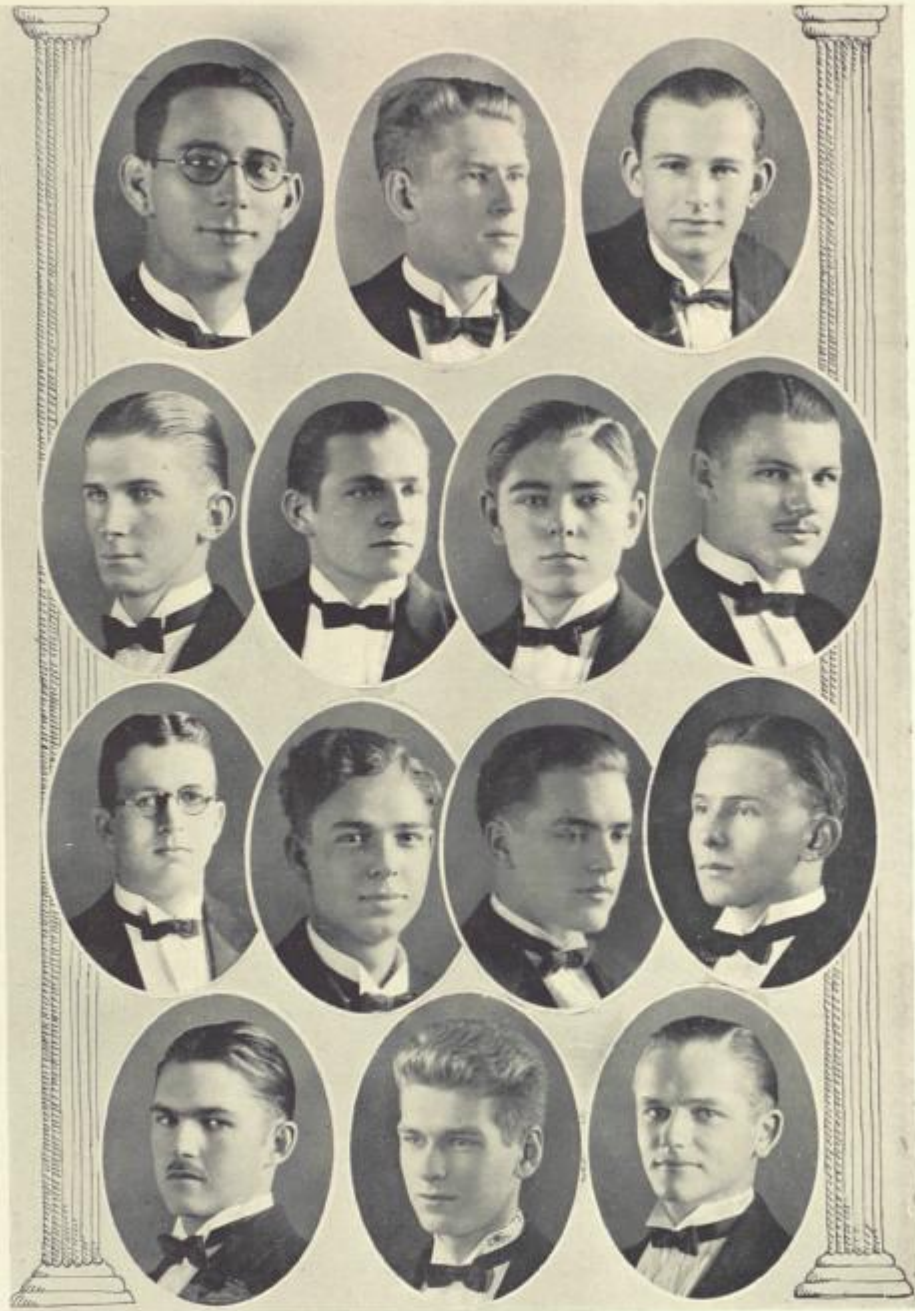
WILLIAM H. COLLIER

EDGAR LEE HURLEY

GLENN O. RASCO

WENDELL F. RASCO

THEO. HON



Sigma Tau Delta

Founded at Stetson University May 30, 1925.

COLORS: *Purple and White.*

FLOWER: *Violet.*

Fratres in Universitate

Class of 1926

IRA P. CROMER

Class of 1927

THEODORE G. KRUMM

Class of 1928

A. EUGENE KNOEFEL, JR.

C. EVERETT STRADLEY, JR.

Class of 1929

CLARENCE C. PENROD

JOHN T. FLEENER

JOSEPH A. ANSLEY

ZERNEY MEREDITH

CHARLES R. BEAL

PAUL D. SIMPSON

HORACE B. GRAY

MERLE G. OLSON

Frater in Facultate

PROFESSOR J. A. CARPENTER

Pledges

WILLIAM A. COBB, JR.

OSWALD RODGERS

CHARLES HILL



Alpha Xi Delta Fraternity

Founded at Lombard College, 1893.

Omega Chapter Established May 31, 1917.

COLORS: *Light and Dark Blue and Gold.*

FLOWER: *Pink Rose.*

CHAPTER MEMBERSHIP

In Facultate

OLGA BOWEN

MARY TRIBBLE

MARIE COURSON

In Academia

HILLIS CARMEAN

MARGARET QUIGLY

HAZEL OVERSTREET

KATHLEEN BREANAN

LURA HUDSON

ADELIA KEEN

VIVIAN BECK

MARY REESE ROYAL

JEWEL EDMUNDS

MILDRED STITH

MARY LEDDY

LAURA BARNES

ELIZABETH OVERSTREET

MARGARET CLEVELAND

SYBIL WILLIAMS

Pledges

MARY BETHEL

MARGARET EBERHART

MATRED CARLTON

ALYCE LEE MCAULEY

PAULINE ENTENZA

MERRIAM WEDEKING

ELIZABETH PRICE

FRANCES WILKERSON

In Urbe

LULA COBERLY

MRS. HORACE ALLEN

MARJORIE STITH

GLADYS STEVENS

MRS. DAVID TUTEN

MERLE STEVENS

MRS. H. A. SCHUBIGER

NELLIE STEVENS

LILLIAN WELLS



Delta Delta Delta Fraternity

Founded at Boston University, 1888.

Alpha Delta Chapter Established 1913.

COLORS: *Silver, Gold, and Blue.*

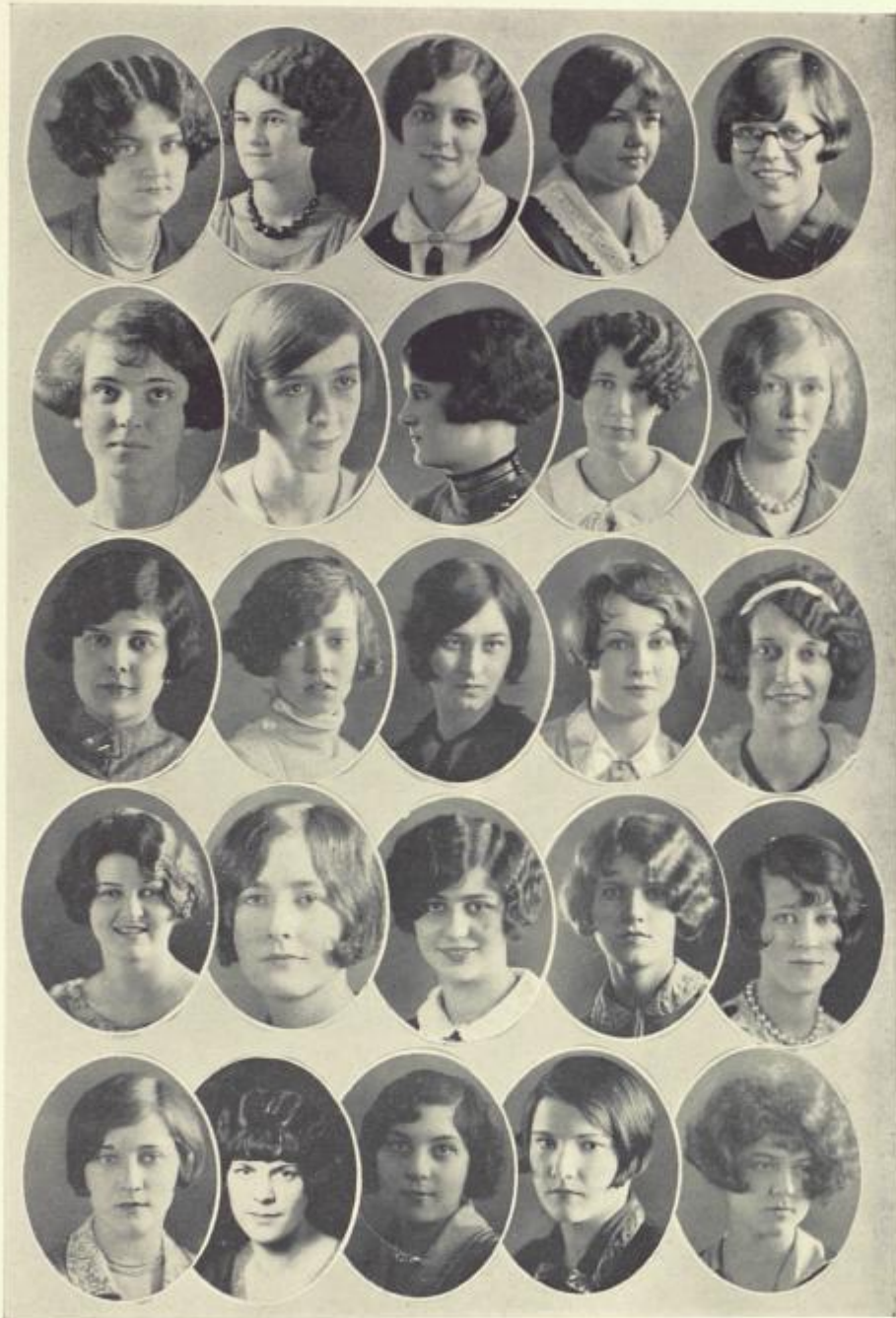
FLOWER: *Pansy.*

CHAPTER MEMBERSHIP

HELEN HARRISON
ALICE VAN CLEEF
KATHERINE SMITH
SARAH BRADLEY
ELIZABETH SLATER
MARGUERITE SMITH
DOROTHY MAY
BLANCHE MERCER
EVELYN TAYLOR
KATHRYN SUNDAY
MARY BAUGHMAN

DOROTHY GIBBONS
JULIA BOHON
MERLE PARKS
NANCY LEE FOUNTAIN
JOSEPHINE ABBOTT
ALMA HIRSCH
EVELYN HARPER
LOUISE PIPPIN
DOROTHY FEARINGTON
EMILY SMITH
ELSIE MORRIS

HELEN WATSON



Phi Beta Phi Fraternity

Founded at Monmouth College, 1867.

Florida Alpha Chapter Established January 30, 1913.

COLORS: *Wine Red and Silver Blue.*

FLOWER: *Wine Carnation.*

CHAPTER MEMBERSHIP

In Facultate

ANNIE NADINE HOLDEN

LUCILLE NEWBY

In Academia

LUCILLE CAYWOOD

MARTHA PRATT

REBEKAH STEWART

MARY LOU TALTON

MARY BRISCOE

LAURIE BUCK

FRANCES COPELAND

HELEN DUTTON

CHARLOTTE FARRINGTON

MARIAN GEORGE

MYRTLE FRANKLIN

GRACE HALDEMAN

LOIS HON

BARBARA HINES

MARGARET HUNT

DOROTHY KURTZ

ALINE LINK

GERTRUDE CONTOIS

MARJORIE LANDPHERE

EVELYN HODGES

LILLIAN EVERSOLE

FRANCES HOPKINS

HARRIET MUNN

VIRGINIA CULBERTSON

ORA MILLER



Theta Alpha Phi Fraternity

(Honorary Dramatic Fraternity)

Florida Alpha Chapter Established December, 1919.

COLORS: *Purple and White.*

PUBLICATION: *The Cue.*

CHAPTER MEMBERSHIP

In Facultate

DR. LINCOLN HULLEY
DR. CHARLES S. FARRIS

MR. LEWIS H. TRIBBLE
MRS. M. S. MCGREGOR

DR. IRVING C. STOVER

In Academia

CHARLES TRIBBLE
HILLIS CARMEAN
GRACE HALDEMAN
LAURINE GOFFIN

J. OLLIE EDMUNDS
CHARLES T. HENDERSON
EDWARD HENDERSON
BRUCE DEDGE

LADOIT RIFFLE

Pledge

LAURA BARNES

In Urbe

VIVIAN ERICSON
C. C. REIMER
HOWARD HODGEN

G. OWEN RASCOE
WENDELL RASCOE
THEODORE HON



Phi Beta Fraternity

Professional Musical Fraternity.

Founded at Northwestern University, 1912.

Eta Chapter Established December 20, 1921.

COLORS: *Lavender and Gold.*

FLOWERS: *Ward Rose and Violet.*

CHAPTER MEMBERSHIP

In Facultate

LUCILLE NEWBY

EVAH BAKER WELSH

MARY TRIBBLE

In Academia

HILLIS CARMEAN

MARY BAUGHMAN

ELIZABETH F. BROWN

EVELYN DEIGHTON

ANNA VAN NESS

NADA LEWIS

LOIS HON

CHARLOTTE SMITH

DOROTHY YOUNG

MARGARET CLEVELAND

HELEN WATSON

MARY BRISCOE

ALINE LINK

JULIA BOHON

LUCILLE NEWBY

NANCY LEE FOUNTAIN

FRANCES COPELAND

FRANCES HOPKINS



Phi Alpha Delta Fraternity

Social Professional Legal Fraternity.

David J. Brewer Chapter Established 1915.

CHAPTER MEMBERSHIP

In Facultate

DR. LINCOLN HULLEY

PROFESSOR LEWIS H. TRIBBLE

PROFESSOR J. E. FUTCH

In Academia

KERFOOT BRYANT

IRA P. CROMER

W. J. FINLEY

O. J. STENWALL

GEORGE J. KING

S. R. S. KIRK

A. P. MEADOWS

C. C. BAILEY

J. W. BAILEY

E. A. BASS

J. L. DREW

J. D. GEIGER

P. F. MAGUIRE

J. OLLIE EDMUNDS

J. E. KIRK

J. L. JOLLY

K. H. HUMPHRYS

CHARLES T. MOONEY

CHARLES T. HENDERSON

L. A. MOONEY

HARRIS SIMS

In Urbe

D. C. HULL

NEILL S. JACKSON

RAY JORDAN

THOS. W. JACKSON

MAJOR W. G. S. LOWE

CARY D. LANDIS

E. W. LANDIS

M. S. MCGREGOR

R. S. MILLER

R. S. MOTT

MURRAY SAMS

H. P. STEWART

J. A. SCARLETT

FRANCIS P. WHITEHAIR

Honorary Members

DEAN R. A. RASCO

JUDGE W. H. ELLIS



Sigma Nu Phi Fraternity

Founded at the National University Law School, 1903.

John Marshall (Eta) Chapter Established April 30, 1921.

COLORS: *Gold and Purple.*

FLOWER: *White Carnation.*

CHAPTER MEMBERSHIP

In Academia

JOSEPH G. SPICOLA
JACK B. OHLHABER
W. KENNETH KING
ELMER JONES
JAMES T. GREEN

CARROLL R. RUNYON
THEODORE G. KRUMM
MAURICE FOSTER
JOHN CLINTON
MABRY CARLTON

THAD WHIDDON

In Urbe

PHILIP BUCK
W. H. COLLIER

I. W. HAWKINS
LEON HARTON

Honorary Members

DUNCAN U. FLETCHER

HERBERT J. DRANE



Sigma Phi Fraternity

Women's Professional Business Fraternity.

Founded at John B. Stetson University, March 24, 1924.

COLORS: *Maroon and Silver.*

FLOWER: *Red Rose.*

ACTIVE MEMBERS

MARTHA BROKAW
HELEN CRENSHAW
THELMA CRESSY
HELEN LEISEGANG
ELIZABETH OVERSTREET

IDA RICHARDSON
CHARLENE SMITH
ETHEL SALISBURY
MARY LOU TALTON
CHARLOTTE SMITH

ALUMNAE MEMBERS

NORMA BRACEY
HELEN DARBY
MAUDE HACKNEY
ELSA HALLSTROM
HELEN HOWARD
WILLADEANE WYLLYS

ERCEL LITTLE
GERTRUDE LIVINGSTON
MARTHA MARVIN
JESSIE OSTEEN
DELTA RICHARDSON
ETHEL WILLIAMS

HONORARY MEMBERS

MRS. HERBERTA LEONDARI

MISS IDA M. NEAL



Phi Delta Delta Fraternity

(Professional Legal for Women)

Founded at University of Southern California.

Rho Chapter Established May, 1923.

COLORS: *Old Rose and Violet.*

FLOWERS: *Roses and Violets.*

CHAPTER MEMBERSHIP

In Academia

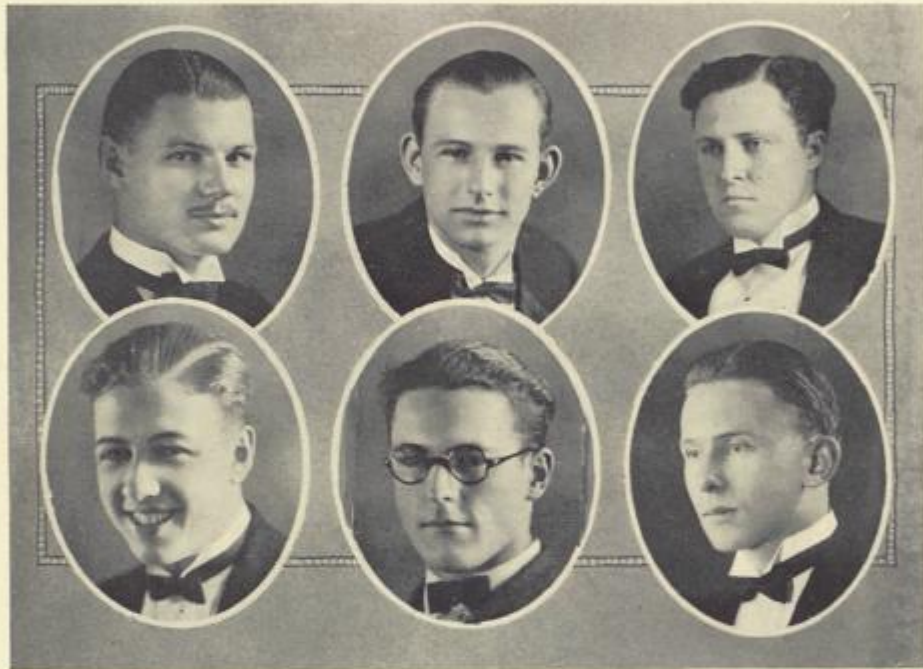
MARY LEDDY
ZEPHYR L. THORPE
MARY W. HOUSTON

ELIZABETH VANN
GLADYS PEEL
HERBERTA LEONARDI

In Urbe

EMILY S. WILLIAMS

MARY STEWART HOWARTH



Psi Omega Fraternity

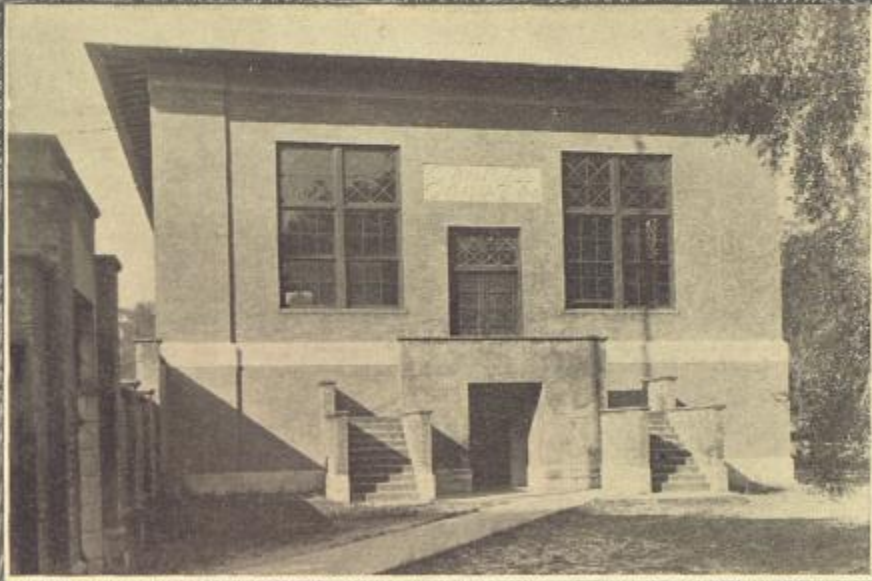
Men's Professional Musical Fraternity.

Founded at John B. Stetson University, 1926.

MEMBERSHIP

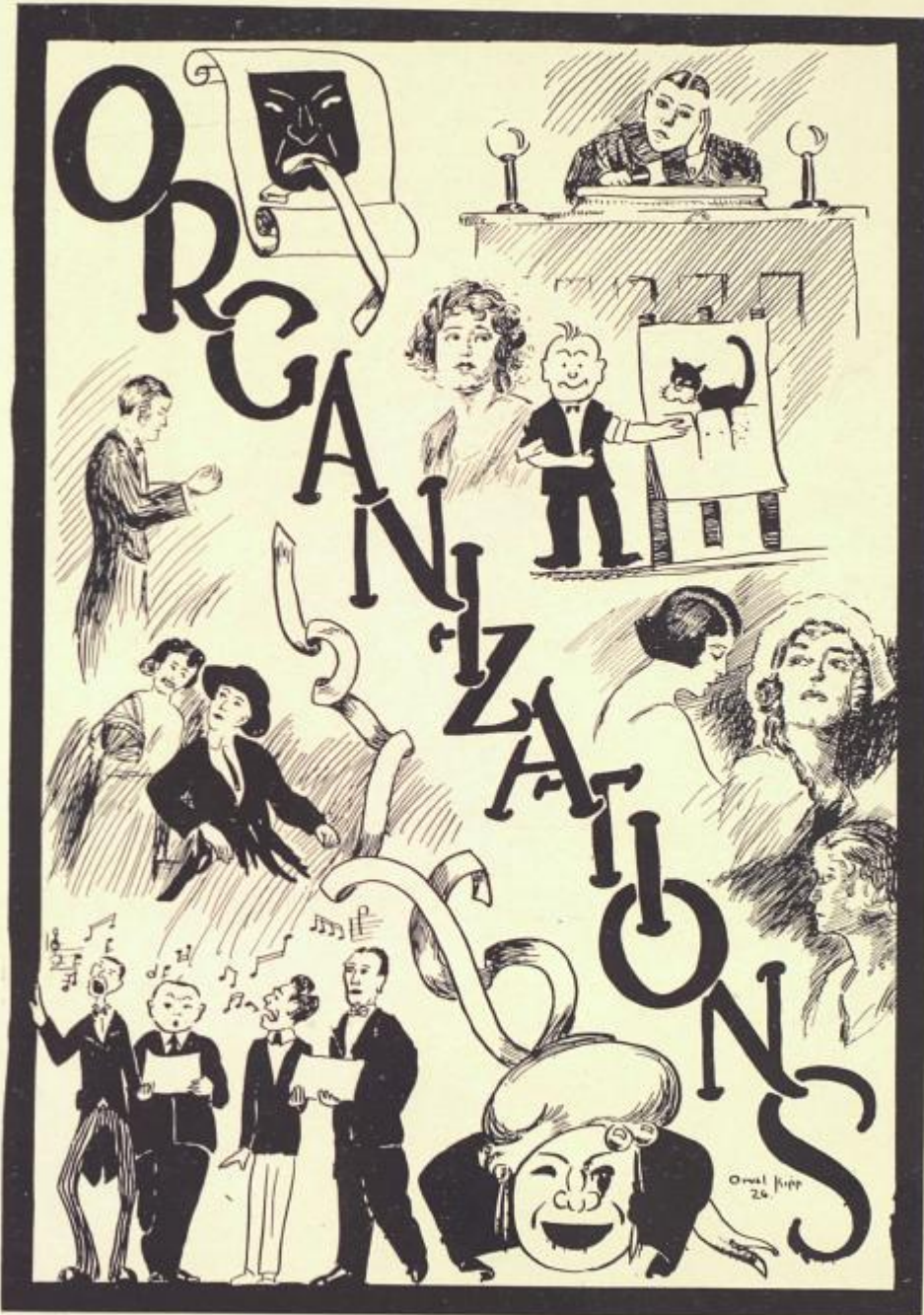
CHARLES EVERETT STRADLEY
MERLE OLSON
CHAUNCEY JOHNSON

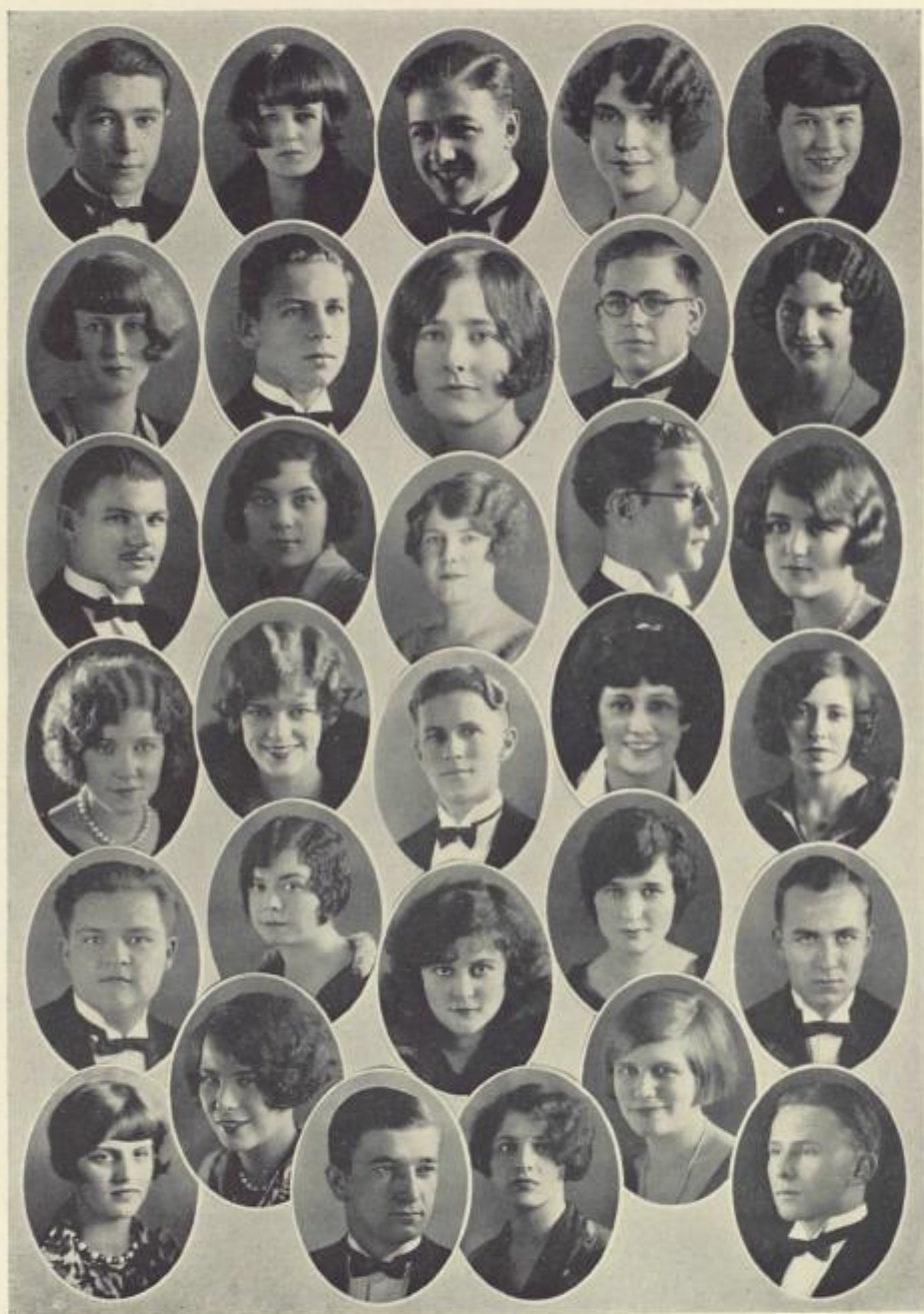
ODUS EVANS
EDWARD M. TREA
PAUL SIMPSON



Book IV

Organizations





Stetson Glee Clubs

MISS RUTH HIBBARD, *Director*

HOPE DUNDAS, LOIS MOORE, *Accompanists*

MEMBERS

First Soprano

MARY BAUGHMAN
SYBIL WILLIAMS
JULIA BOHON
NADA LEWIS
ELINOR GOLDMAN

Second Soprano

EMILY SMITH
NANCY LEE FOUNTAIN
MARIAN GEORGE
HELEN GOODMAN
GERTRUDE CONTOIS

First Alto

BETTY WOLFE
DEBBIE SMITH
GLADYS WEEKS
MERLE PARKS
ELSIE MORRIS

Second Alto

VIRGINIA OLIVER
HELEN STRAW
DOROTHY MAY
MARIAN WEDECKING
MARY RUTH CHURCH

First Tenor

HOWARD MORROW
WILLIAM MORROW

Second Tenor

HARRY J. ROBINSON
CHAN JOHNSON

First Bass

J. LAMAR NEWBERRY
JOHN GILL
TED TYLER
JAMES MCFATE

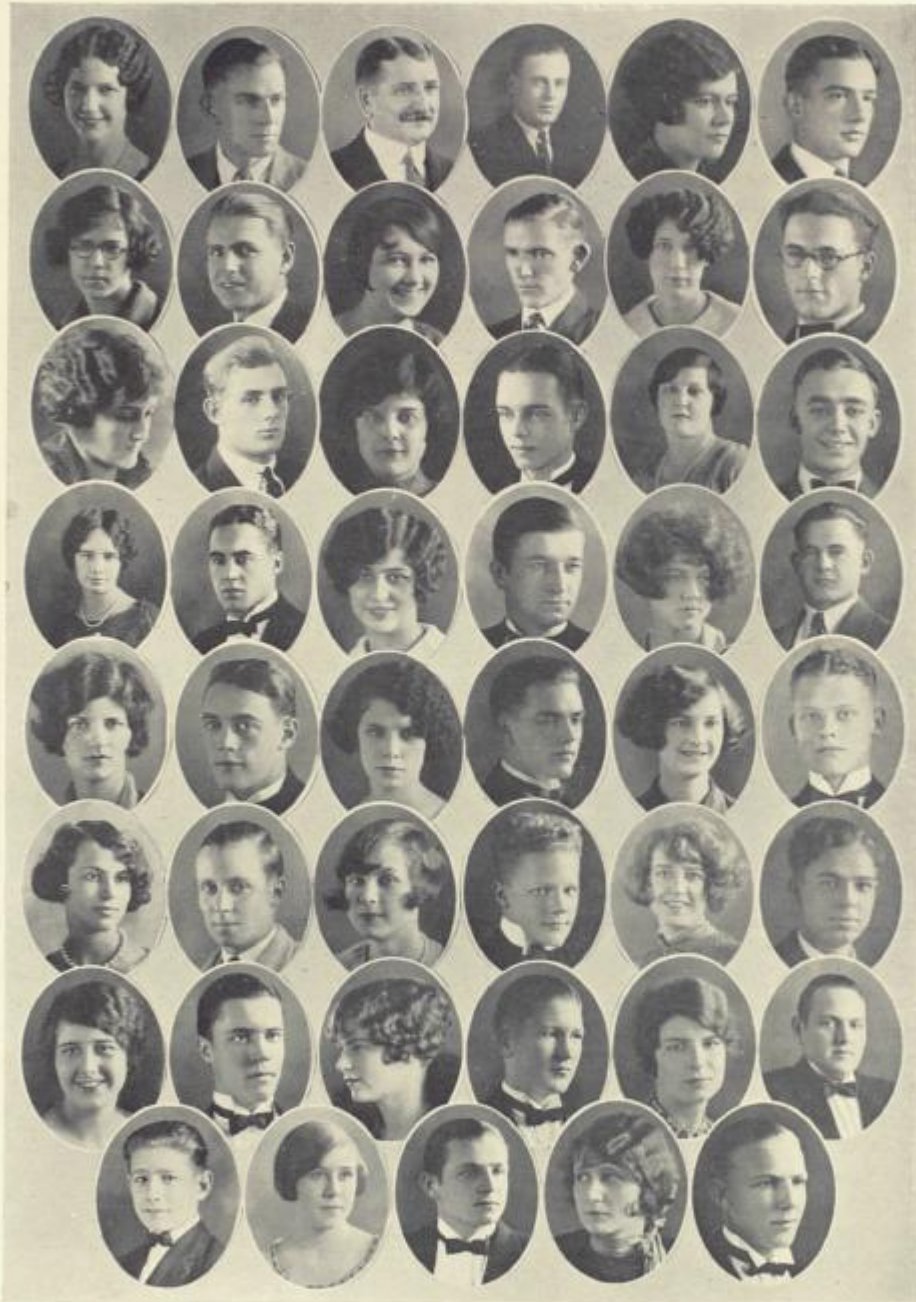
Second Bass

MERLE OLSON
JOHN CLINTON
ALFRED E. WILSON
RUBEN WASHBURN
PAUL SIMPSON

The Glee Clubs have aimed to give an entertaining program of the very best type of music. Some of the numbers included in the concerts were: Combined clubs—"Listen to the Lambs," by Delt; "The Wreck of the Julie Plante," by O'Harra; and the Huntington-Goodman arrangement of the ballet music from "Faust." Girls' Club—"Wynken, Blynken and Nod," by Nevin; "Ave Maria," from "Lorelei" by Mendelssohn; "The Big Brown Bear," by Mana-Zucca; "Songs of Long Ago," by Burleigh. Boys' Club—"The Brownies," by Seni; "Old King Cole," and "The Song of Prince Rupert's Man," by Thayer.

The Clubs co-operated with the dramatic activities of the University, and also furnished music for special occasions such as Founder's Day.

The continuous development of the Clubs, combined with the fame of past years, brought in invitations to give concerts from the leading cities in the state. In the spring the combined clubs toured the state, singing in Daytona, Melbourne, Miami, Orlando, Lakeland and Tampa.



Krucible Klub

OFFICERS

R. GRAY VAN DEVENTER	<i>President</i>
R. W. TER KUILE	<i>Vice-President</i>
CHRISTINE LANTZ	<i>Secretary-Treasurer</i>
ELINOR GOLDMAN	<i>Program Manager</i>
DR. E. P. BARRELL	<i>Senior Critic</i>
BERT HOUSMAN	<i>Junior Critic</i>

MEMBERS

DR. E. P. BARRELL
 DR. THOMAS O. MABRY
 JAMES M. ANDERSON
 GIRARD VAN AMERONGEN
 GWIN ALDERMAN
 CATHERINE BERKELMEN
 RUTH M. BAKER
 CYRUS F. CRESSY
 MINNIE CHALFIN
 GEORGE B. CLARK, JR.
 ANNIE E. CHAUDOIN
 VIRGINIA CULBERTSON
 ROBERT DANIELS
 MYRTLE FRANKLIN
 HELEN GALLANT
 HELEN GOODMAN
 ELIZABETH GARRISON
 DIXON GOLDMAN
 KATY HOUSMAN
 ROBERT MURRAY HALL
 LOVICK HAYMAN
 DIXIE HERLONG
 GLADYS HONEYWELL
 RALPH F. HANSON
 DAVID S. JOHNS
 FLOYD KNIGHT
 PHILANDER C. KNOX
 ALINE LINK
 LORING MILLER
 BLANCHE MERCER
 MARION O'KELLY

CLARENCE PENROD
 SARA T. RAU
 DAVID E. RICHARDSON
 ENOCH M. ROBERTS
 FRANCIS L. STEWART
 MILTON STODENMIRE
 MARION SIMPSON
 ELIZABETH SPOFFORD
 FREDERICK B. STUART
 AUDREENE THOMPSON
 R. W. TER KUILE
 R. GRAY VAN DEVENTER
 ALLEN C. WINTERS
 REUBEN WASHBURN
 M. THEODORE WHEELER
 PROF. DAVID E. DAVIS
 PROF. CLARENCE A. RUGGLES
 ISABEL B. ANDERSON
 WILLIAM VAN AMERONGEN
 LAWRENCE J. BERNARD
 ELIZABETH BROWN
 RUTH D. BURDETT
 MATRED CARLTON
 JOHN B. CLEMENT
 MAURICE CARLTON
 FRANCIS W. CRAIG
 RONALD CUTLER
 BERT C. EUSTICE
 DOROTHY FEARINGTON
 ELINOR DIXON GOLDMAN
 MASON GRAVES

HORACE GRAY
 EDWARD B. HENDERSON
 MARJORIE DE CON HUNTER
 ELINOR F. HARRIS
 ETHEL HUNTER
 ALMA HIRSH
 BERT HOUSMAN
 WILFRID H. HUNTINGTON
 DOROTHY KURTZ
 ARTHUR E. KNOEFEL, JR.
 CHRISTINE LANTZ
 JOHN LUZAR
 MURIEL MAHONEY
 FELTON MIKELL
 FREDERICK L. OWENS
 JEAN POWERS
 LADOIT RIFFLE
 MARGARET C. RICHARDSON
 GEORGE SELF
 RUSSELL E. SNYDER
 MARGUERITE A. SMITH
 DON SISTRUNK
 JOHN S. SMITH
 LUCIUS G. THOMAS
 EVELYN TAYLOR
 EDWARD M. A. TREA
 ALICE VAN CLEEF
 MARY F. WHEELER
 JOHN C. W. WORKIZER
 RHODA ZACHARY



Les Amis Des Beaux Arts

OFFICERS

ROBERT KIRKPATRICK *President*
MARGARET HUNT *Vice-President*
MARY SWIFT DAVIS *Secretary-Treasurer*

MEMBERS

In Faculty

PROF. H. D. FLUHART MRS. H. D. FLUHART
PROF. GEORGE E. GANIERE

In University

NELLIE BAILEY	GRACE TURNER
HELEN DANCER	ANNA UZZELL
MARY SWIFT DAVIS	BETTY WOLFE
RUTH DAVIS	OLIVE WREN
AILEEN EUSTICE	EMMA KEIS
MASON GRAVES FUGLE	ORVAL KIPP
DOROTHY GIBBONS	ROBERT KIRKPATRICK
ETHEL HALL	MARJORIE LANDPHERE
MARGARET HUNT	DOROTHY MAY
EVELYN LUCK	ANNA McMAHON
LYRA SMITH	BLANCHE MERCER
MARGUERITE SMITH	ELSIE MORRIS
RUTH TALLEY	VELMA SINGER
EVELYN TAYLOR	MARY HOLMES THIoT



YOUNG WOMEN'S CHRISTIAN ASSOCIATION



YOUNG WOMEN'S AUXILIARY



The Order of the Torch and Scroll

Honorary Society Recognizing Scholarship and Leadership.

Founded at John B. Stetson University, January 14, 1926.

COLORS: *Crimson and Old Gold.*

FLOWER: *Red Rose.*

MEMBERSHIP IN ACADEMIA

SARAH BRADLEY
ELIZABETH F. BROWN
HILLIS CARMEAN
LUCILLE CAYWOOD
CYRUS CRESSY
JEWEL EDMUNDS

CHARLOTTE FARRINGTON
HOWARD GOULD
HELEN HARRISON
ALINE LINK
MARTHA PRATT
ALICE VAN CLEEF

ANNA VAN NESS



Girls' Student Government Association

OFFICERS

HILLIS CARMEAN	<i>President</i>
ALINE LINK	<i>Vice-President</i>
HAZEL OVERSTREET	<i>Secretary</i>
REBA SWIFT	<i>Treasurer</i>

STUDENT COUNCIL

HILLIS CARMEAN	<i>President</i>
HAZEL OVERSTREET	<i>Senior Representative</i>
ALINE LINK	<i>Junior Representative</i>
REBA SWIFT	<i>Sophomore Representative</i>
EVELYN DEIGHTON	<i>Freshman Representative</i>
CHARLOTTE FARRINGTON	<i>House President</i>
MATRED CARLTON	<i>House President</i>
SYLVIA SINGER	<i>House President</i>



Pan-Hellenic Council

OFFICERS

HAZEL OVERSTREET	<i>President</i>
SARAH BRADLEY	<i>Vice-President</i>
REBEKAH STEWART	<i>Secretary</i>

MEMBERS

HAZEL OVERSTREET	<i>Alpha Xi Delta</i>
LAURA BARNES	<i>Alpha Xi Delta</i>
HILLIS CARMEAN	<i>Alpha Xi Delta</i>
SARAH BRADLEY	<i>Delta Delta Delta</i>
BLANCHE MERCER	<i>Delta Delta Delta</i>
EVELYN TAYLOR	<i>Delta Delta Delta</i>
REBEKAH STEWART	<i>Pi Beta Phi</i>
LUCILLE CAYWOOD	<i>Pi Beta Phi</i>
CHARLOTTE FARRINGTON	<i>Pi Beta Phi</i>



CHRISTIAN FORUM



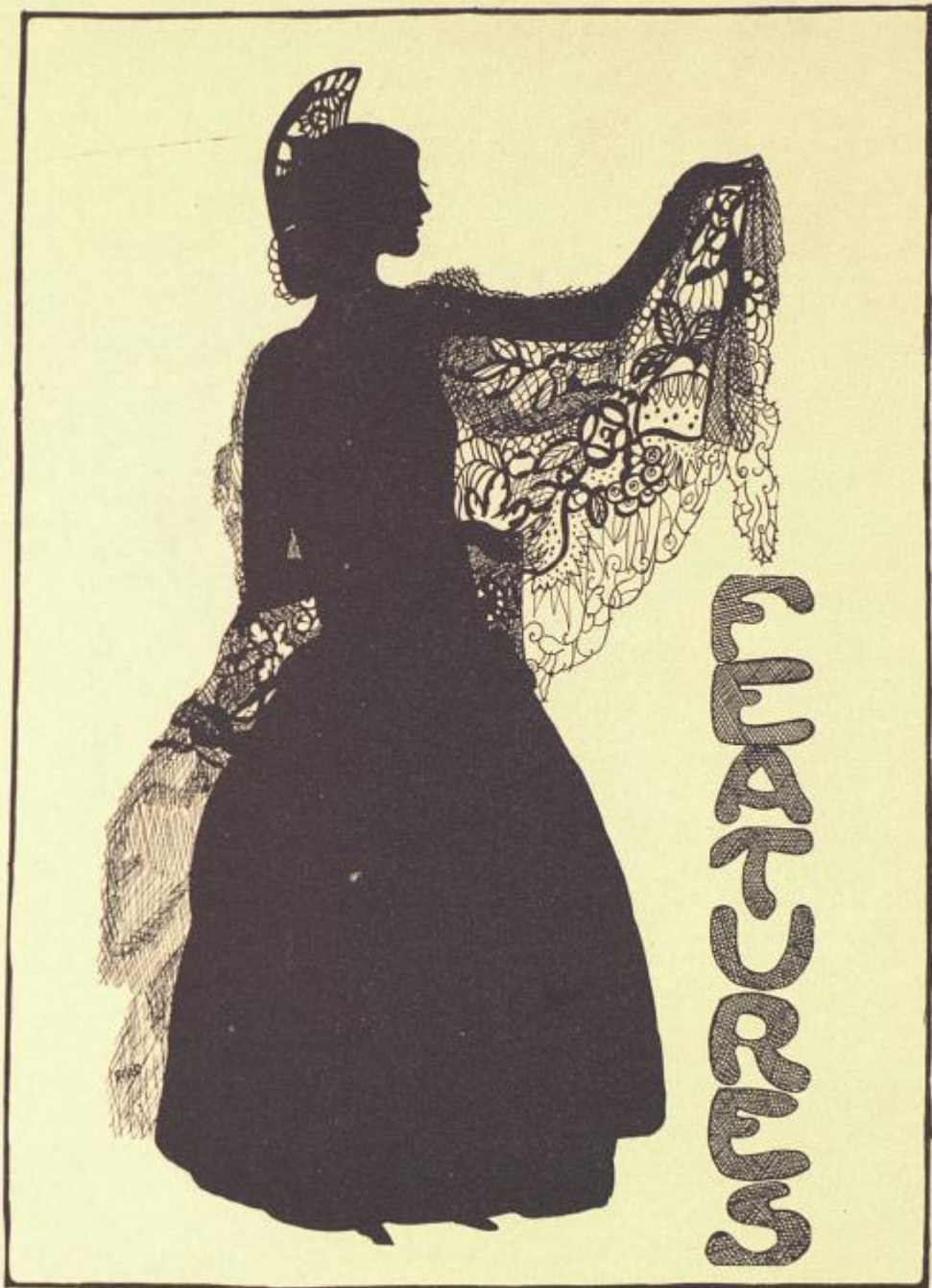
1926 Oshihyi Staff

CHARLOTTE FARRINGTON	Editor-in-Chief
JACK L. JOLLY	Business Manager
JACK C. ROSS	Assistant Editor
LAURINE GOFFIN	Feature Editor
ZEPHYR THORPE	Assistant Feature Editor
ALBERT COX	Athletic Editor
JOSEPHINE ABBOTT	Social Editor
MARJORIE LANDPHERE	Art Editor



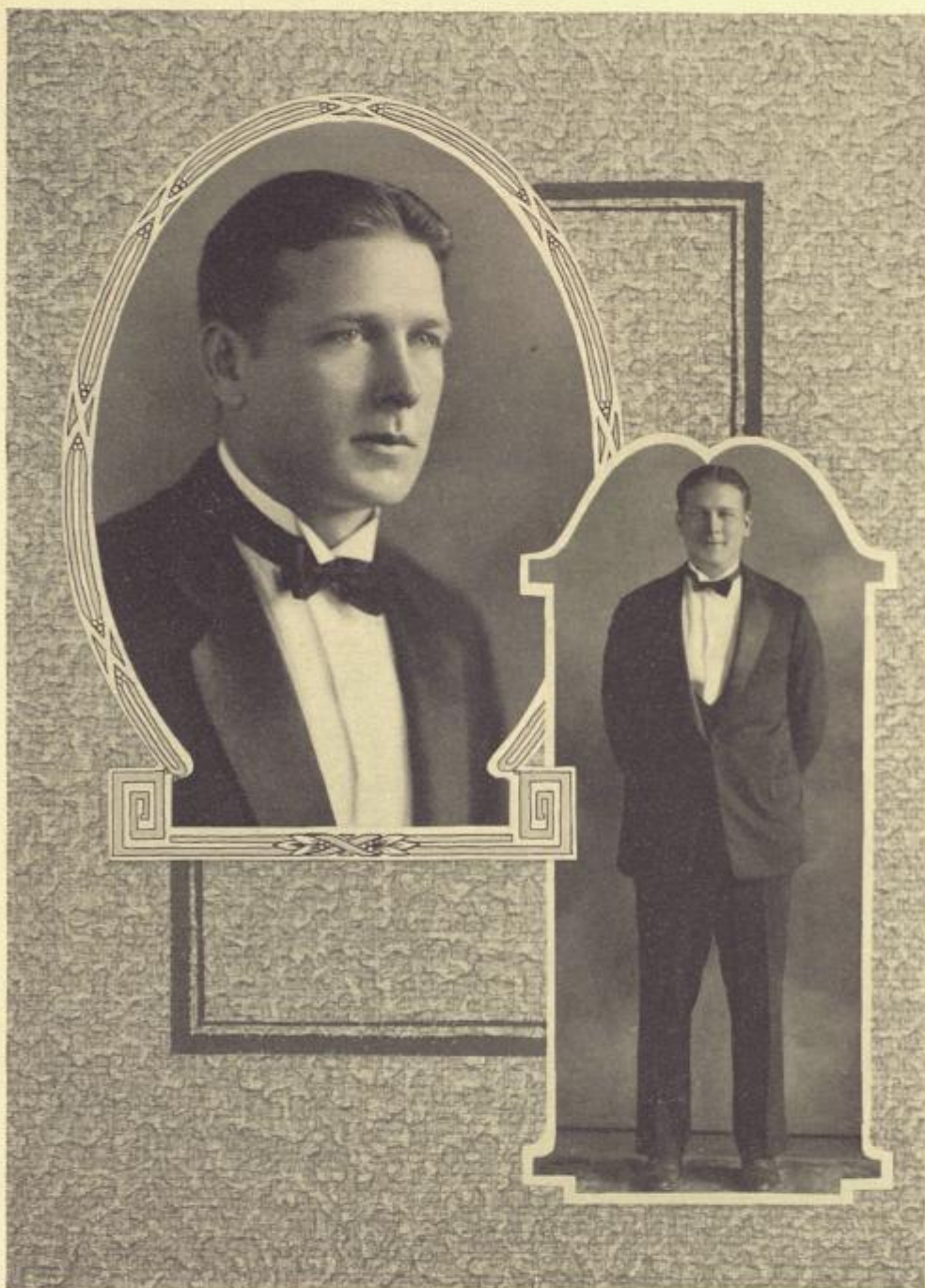
Book V

Features





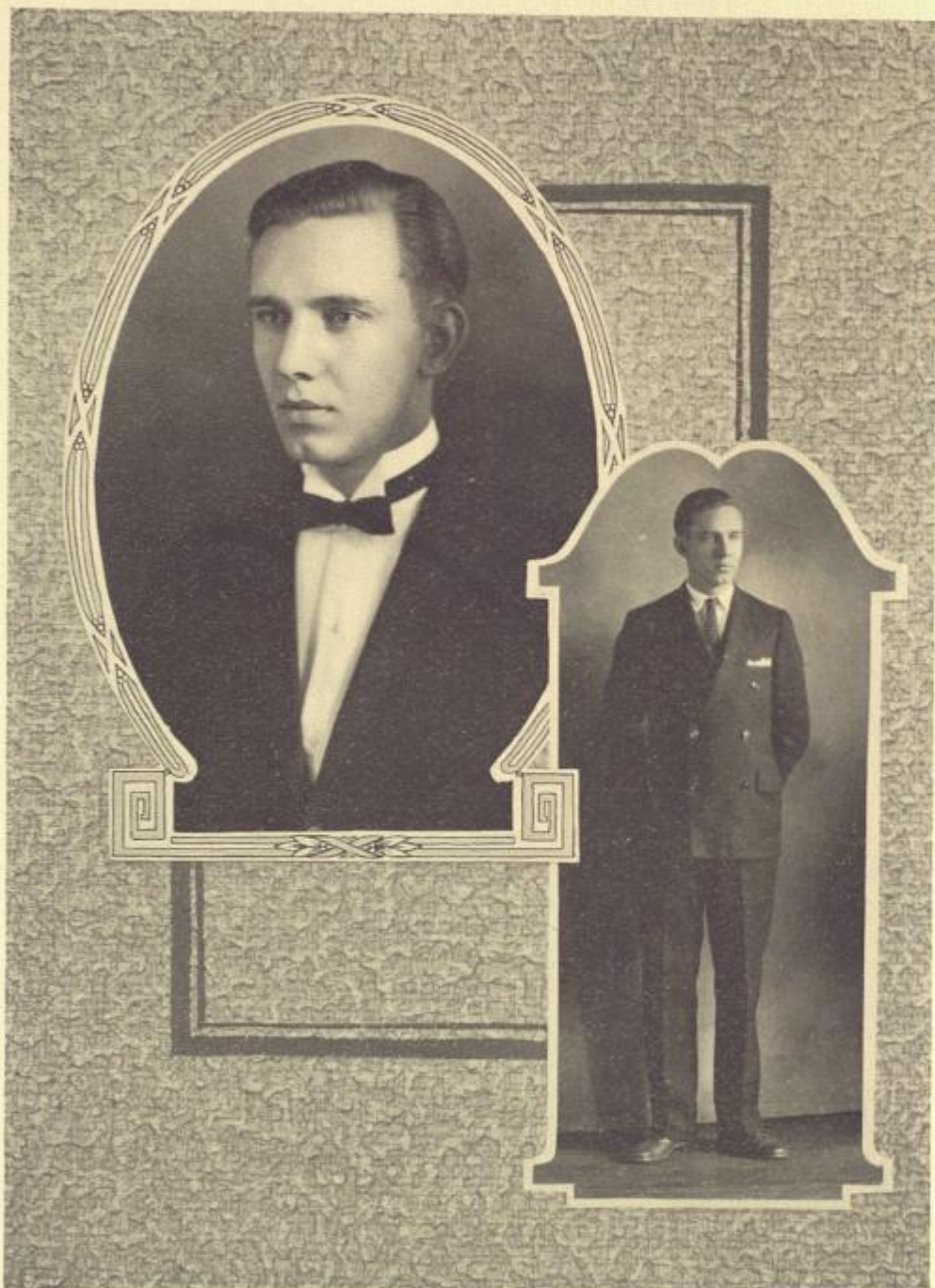
MISS MYRTLE FRANKLIN
Most Popular Girl



MR. DON GEIGER
Most Popular Boy



MISS LUCILLE CAYWOOD
Most Beautiful Girl



MR. JACK JOLLY
Most Handsome Boy



MISS CHARLOTTE FARRINGTON

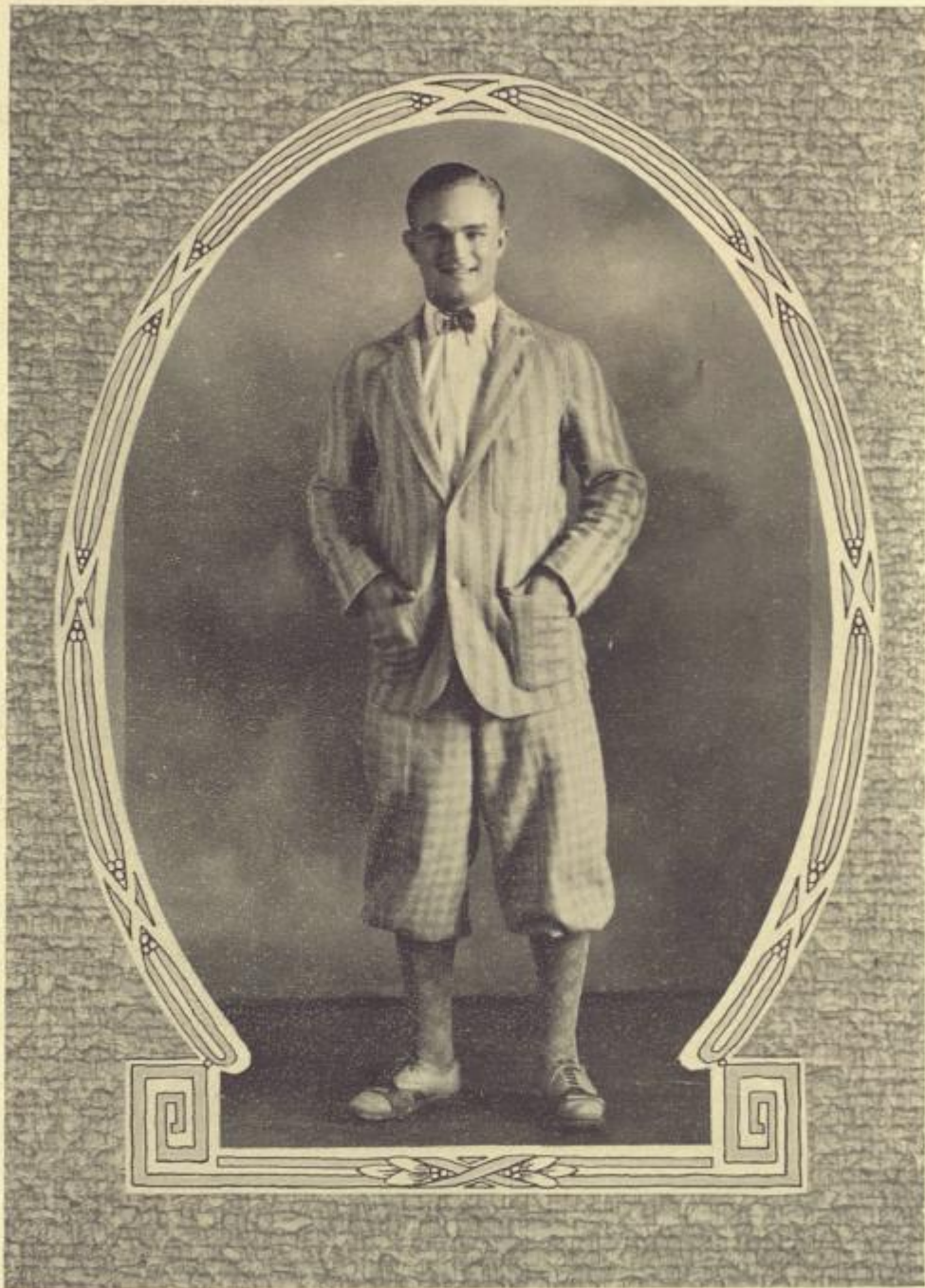
Most Intellectual Girl



MR. OLLIE EDMUNDS
Most Intellectual Boy



MISS EVELYN HODGES
Best Sport Girl



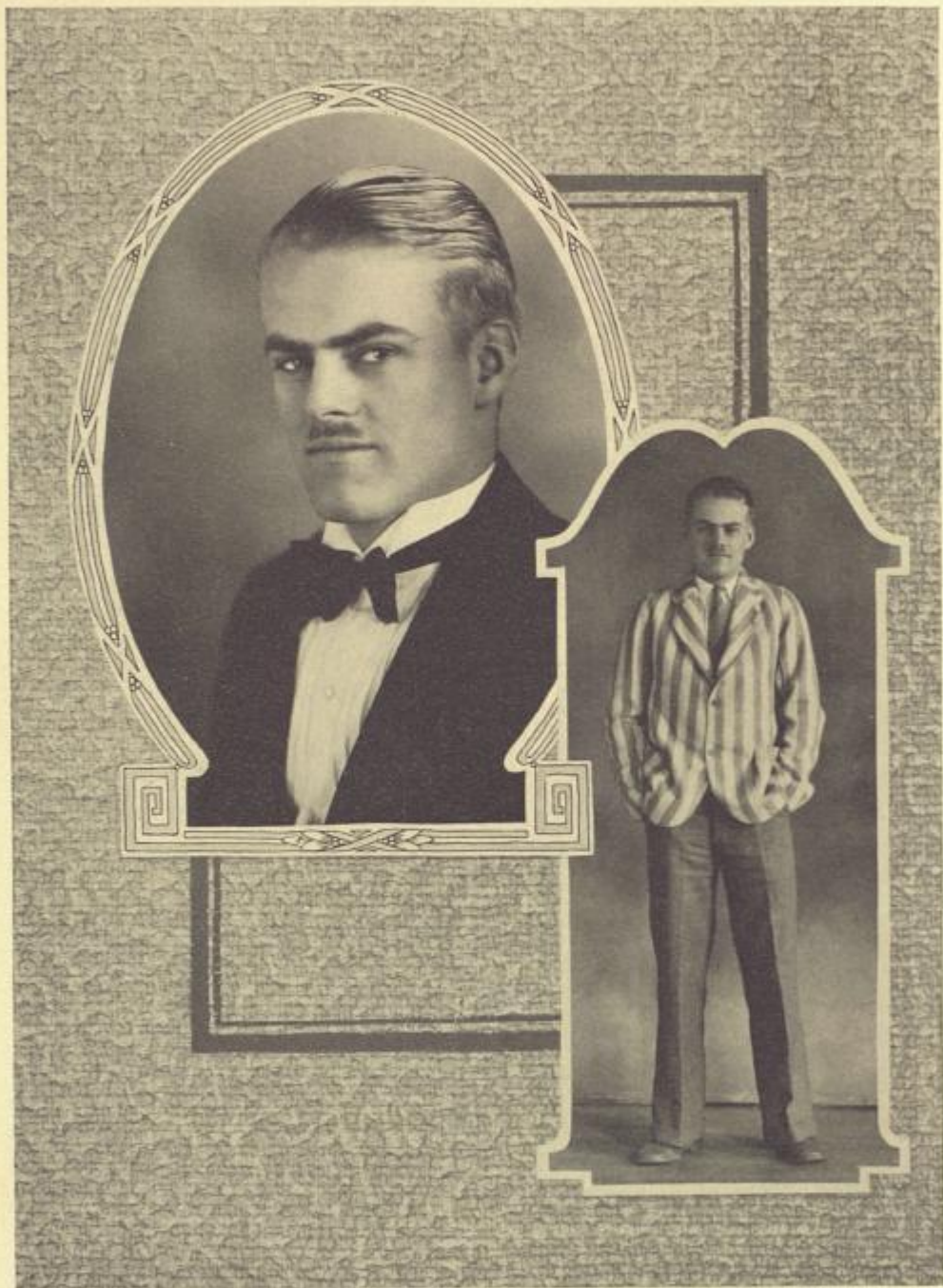
MR. LEVI COURTNEY

Best Sport Boy



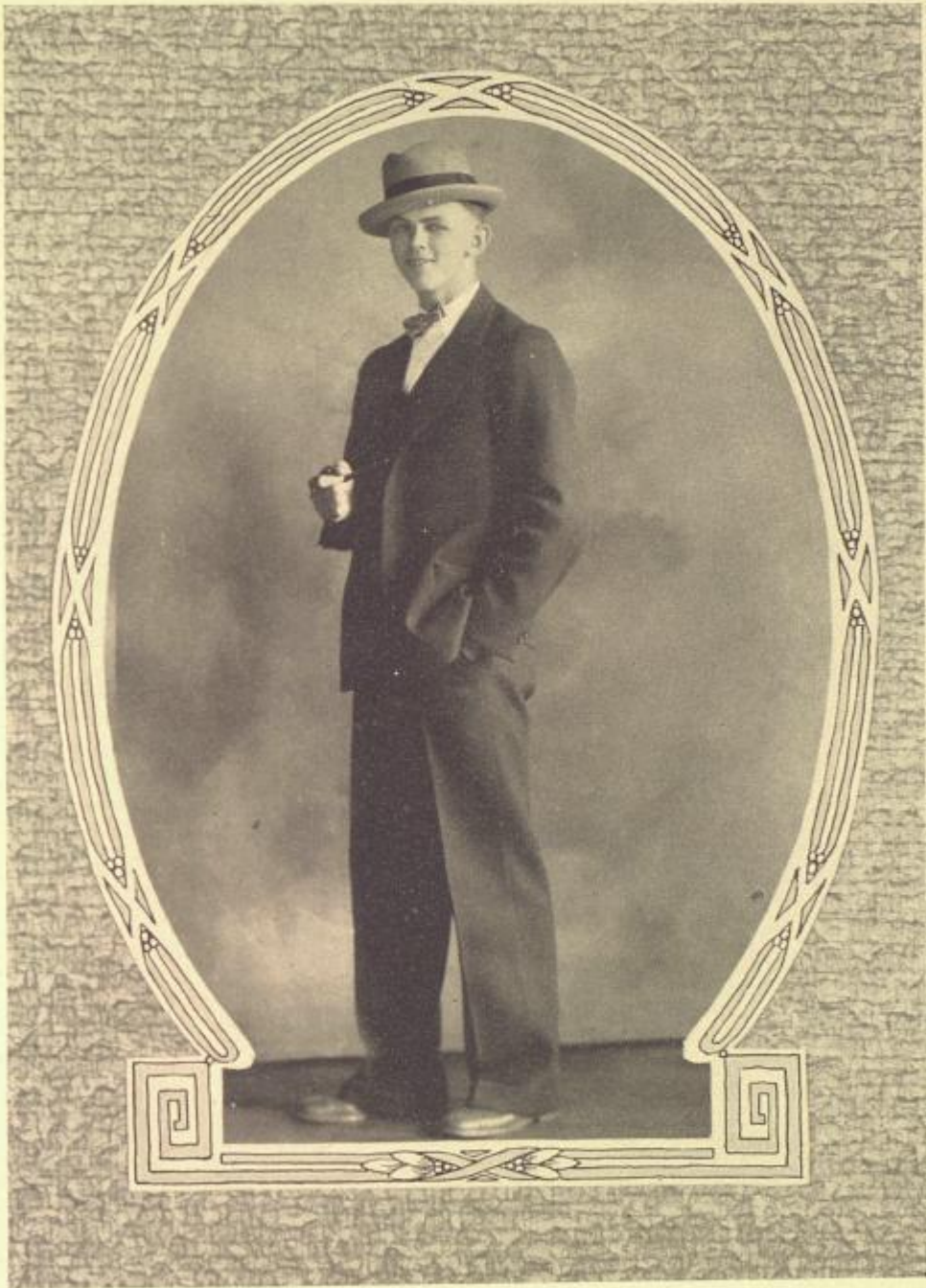
MISS MYRTLE FRANKLIN

Vainest Girl



MR. FRITZ BURT

Sheik



MR. HARRY L. ANDERSON
Most Conceited Boy



MISS LAURINE GOFFIN

Sheba



MISS MARJORIE LANDPHERE
Most Bashful Girl

Oshihiyi
1926
John B. Stetson University
De Land, Florida

DEAR STETSONITES:

It is with pleasure that the Staff of the 1926 OSHIHIYI announces the winners of the "WHO'S WHO" contest in which you participated in January.

<i>Most Popular Girl</i>	MYRTLE FRANKLIN
<i>Most Popular Boy</i>	DON GEIGER
<i>Most Beautiful Girl</i>	LUCILLE CAYWOOD
<i>Most Handsome Man</i>	JACK L. JOLLY
<i>Most Intellectual Girl</i>	CHARLOTTE FARRINGTON
<i>Most Intellectual Boy</i>	J. OLLIE EDMUNDS
<i>Best Sport Girl</i>	EVELYN HODGES
<i>Best Sport Boy</i>	SPOT COURTNEY
<i>Vainest Girl</i>	MYRTLE FRANKLIN
<i>Most Conceited Boy</i>	HARRY L. ANDERSON
<i>Sheba</i>	LAURINE GOFFIN
<i>Sheik</i>	Fritz Burt
<i>Most Bashful Girl</i>	MARJORIE LANDPHERE
<i>Most Bashful Boy</i>	NATHANIEL O'KELLY
<i>Golddigger</i>	MASON GRAVES
<i>Biggest Two-Timer</i>	HARRY L. ANDERSON

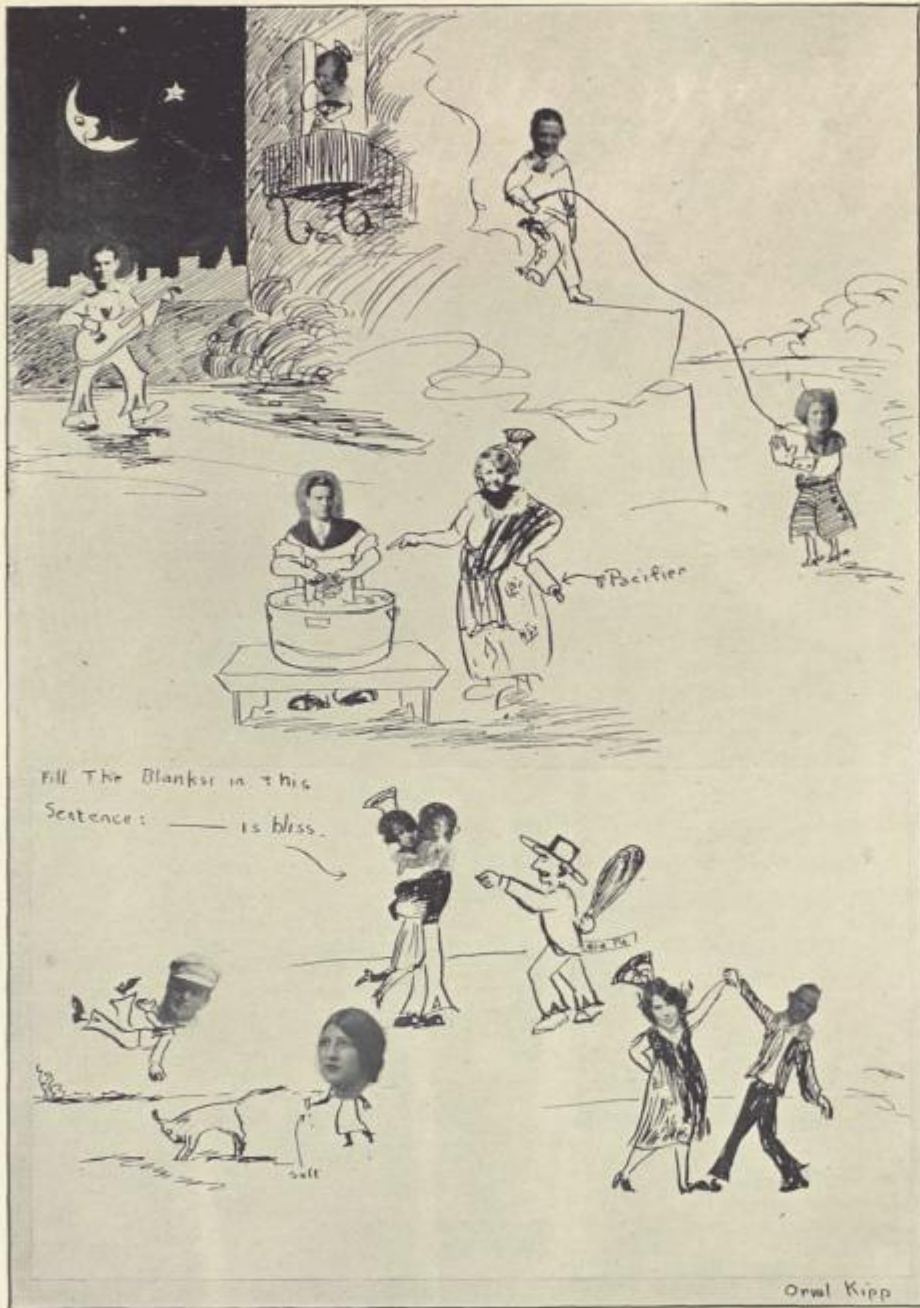
The Staff regrets that all of the pictures are not shown in the feature section. But we take this opportunity of thanking the winners who so kindly co-operated to make the "Feature Section" a success.

Yours sincerely,

1926 OSHIHIYI STAFF.

HUMORES LECTUS





Here's to the Seniors

CHARLES TRIBBLE

You can always see him in the forefront
In the midst of a basket-ball dribble—
Or leading a team of gridiron heroes.
"Who is he?" None other than Charlie Tribble.

LUCILLE CAYWOOD

The president of Pi Beta Phi,
Is Caywood with pretty brown eyes.
She's the kind of a girl that takes in this world,
Our president of Pi Beta Phi.

ELMER JONES

If ere you listen to Practice Court and hear low gruff tones,
Just bet your life, and all you've got, that it's the oration of Jones.
He'll take his stand before the Bench and cite and cite
And nine times out of ten you'll note, he's nearly always right.

GERTRUDE O'KELL

O'Kell, my girl, you're stepping out to a world so cruel and cold,
But a Portia is needed mighty bad, and you'll have to be quite bold.
It's a wonderful profession, but I'm afraid you've lost your heart,
But the law you've learned will never depart, though you're a victim of Cupid's
dart.

ANNA VAN NESS

In any old clime
You'll hear the dear chimes, played by one who is stalwart and true.
I'll have to confess that it's Anna Van Ness,
The Phi Beta who's always true blue.

A. P. MEADOWS

As my eyes wander round the campus
They rest on a Sigma Nu
There's no use guessing, for it's
A. P. Meadows,—that's who.

HILLIS CARMEAN

There's a tiny sweet girl, Hillis Carmean
Being president of council she'd stir,
In dramatics she's strong, and we will never go wrong,
If we learn about women from her.

JOSEPH SPICOLA

The smartest of fellows I ever saw,
Is Joe Spicola who is finishing Law.
When the C. J. prize was scheduled to run,
Our bright little Spic worked hard, and he won.

HAZEL OVERSTREET

Here's a girl you would love to meet,
That's Hazel Overstreet.
She's an all-round girl, like a genuine pearl.
And believe me, she's hard to beat.

ELIZABETH BROWN

She's really the smartest in the town,
The School knows her as good old Libby Brown.
When she starts talking, I do feel like balking—
And I feel as cheap as a clown.

KERFOOT BRYANT

Boys may come and boys may go,
But I know one who'll stay
To learn as much as they offer here,
And he'll get my vote any day.



Advice

When I'm in trouble and distress, in sorrow and in anguish, when I'm in sickness more or less, and on my cot I languish, my friends all gather 'round my bed to heed my lamentations, and then they pour into my head, advice and consolation. Says one, "Fresh air is what you need to put some new spirit in you. Raise all the windows, and, indeed, you'll strengthen bone and sinew." Another says, "Take my advice; fresh air will cramp and fetter; close all your windows, and in time you'll find yourself much better." Another says, "Take all the pills, the powders and prescriptions: in sooth they'll banish all your ills and better your condition." And still some other lad speaks out, "Pay no heed, we assure you let all your medicine leak out. Let Mother Nature cure you." And so 'mid all my aches and pains, I heed these words and suffer, until I resolve to banish every duffer. "Get out!" I say, in accents loud, "And leave me to my sorrow, no more around my bedstead crowd, or I'll be dead to-morrow."

And other times when I'm pursued with worries without number, when life seems far from rosy hued, when cares disturb my slumber, as I walk down the Boulevard, my friends all warbble gaily, "Why all this melancholy air that sits upon you daily? Take some advice from one who knows; improve your disposition, throw to the skies your earthly woes, and smile a benediction. What though your creditors are keen, and seek their long owed money? Still walk with countenance serene, with smile both bright and sunny. What though your best has failed to write, let not such trifles fret you; sit down, to it a note indite, and say, 'She'll never get you!'"

Too long I listened to his words, then I cry in resentment, "Enough! How do you idle birds know how to find contentment? The trouble that I have is mine, what do you know about it?" But then, to smile is very fine, I'd better not live without it!



SIGMA NU

We are the boys of the Sigma Nu, and a wonderful bunch are we.
 We do our work without a shirk in less than a small jiffy;
 But we are serious when our play is done, and we keep our standards high,
 And it makes no difference if our motto is, "*Me, Myself, and I.*"

PI BETA PHI

They're the kind of girls, you can't forget,
 If you tried no matter how much.
 For they are all such wonderful girls made with that finishing touch.
 Of course they have their faults, and I love to pick them out,
 They hold their nose too high in the air—so you've noticed no doubt.



DELTA SIGMA PHI

Every one must have their start, and we've progressed by leaps and bounds.
 Our boys consist of a regular bunch, but mostly from Florida towns.
 As the years roll by we'll guarantee no mark will appear on our slate,
 For we're the kind that buckle down, and in the end we're bound to rate.





ALPHA XI DELTA

I've met girls, just lots of them,
 But I've never yet met before
 Such jolly good sports as the Alpha Xis,
 The girls who are sure to please.

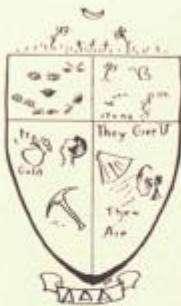
PI KAPPA PHI

Tell us the truth, O reader, and not sentences full
 of lies,
 Are we not a regular bunch, I mean the Pi Kappa
 Phis?
 You bet we are, and we'll tell the world, we work
 without resentment—
 Drop in and see when you're in town and you'll
 find sublime peace and contentment.



DELTA DELTA DELTA

There's no one on the campus who's really quite
 so snooty,
 But we'll have to make allowances for girls are
 very moody.
 They go their way with a graceful sway, and you
 can not help but admire,
 Their taste, finesse, good looks and all, coupled
 with attractive satire.



JOHN B. STETSON UNIVERSITY

Lincoln Hulley, Ph.D., Litt.D., LL.D., *President*

DE LAND, FLORIDA

THE COLLEGE GRADUATE DEPARTMENT OF ARTS
AND SCIENCES.

Courses leading to the degrees of Master of Arts and Sciences.

THE COLLEGE OF LIBERAL ARTS FOR MEN—Sixteen Carnegie Units required for admission. Twenty-one departments in all.

THE COLLEGE OF LIBERAL ARTS FOR WOMEN—A woman dean, separate dormitories for women, and a separate gymnasium.

THE COLLEGE OF LAW—Three-year course leading to the LL.B. degree. Graduates admitted to practice in Florida without examination.

THE COLLEGE OF ENGINEERING—Courses in Civil, Mechanical, Electrical and Chemical Engineering leading to degrees.

THE COLLEGE FOR TEACHERS—Especially for Florida Teachers, strong normal courses and special teachers' courses.

THE COLLEGE OF BUSINESS—Beside Banking, Bookkeeping, Accounting, Shorthand, Typewriting, courses in History, Law, Economics and Finance.

THE ACADEMY—Sixteen units for graduation. Prepares for Harvard, Yale, Princeton, Chicago, and all high grade colleges.

THE SCHOOL OF MECHANIC ARTS—For boys and young men desiring manual training, mechanical drawing, etc.

THE SCHOOL OF MUSIC—Separate teachers for piano, pipe organ, violin, voice, harmony and chorus work.

THE SCHOOL OF FINE ARTS—Free hand and life drawing. Painting in oil, water color, pastel, etc.

SPECIAL ATTENTION IS CALLED TO

1. THE PRELIMINARY COURSES IN AGRICULTURE—Botany, Biology, Organic and Inorganic Chemistry, Qualitative and Quantitative Analysis, Agricultural Chemistry, Mineralogy, Geology, etc.
2. THE PRE-MEDICAL COURSE—Physiology, Biology, Anatomy, Bacteriology, Histology, Zoology, Botany, General Chemistry, Inorganic Chemistry, Qualitative and Quantitative Chemistry.
3. THE COURSE FOR RELIGIOUS WORKERS—In Biblical Literature, History, English, Psychology, Ethics, Logic and Theism.



Book VI

Advertisements

HEADQUARTERS FOR STUDENTS

THE POLLYANNA

ICE CREAM, SODAS, SCHRAFFT'S AND HAPPINESS CANDIES
TOASTED SANDWICHES A SPECIALTY

SERVICE *QUALITY*

YOU ARE WELCOME

131 North Boulevard

De Land, Florida

"THE REXALL STORE"

GOOD WISHES FOR
STETSON AND HER STUDENTS

We are always at 100 South Woodland Boulevard

YOU ARE WELCOME

G. W. FISHER DRUG COMPANY

THE ALLEN-WHITE COMPANY, Inc.

COMPLETE OFFICE OUTFITTERS

PHONE 27

De Land

::

Florida

HOTEL
COLLEGE
ARMS

De Land, Florida



BEAUTIFUL LOCATION

ELEVATOR, STEAM HEAT

UNEXCELLED GOLF COURSE



White Service Throughout

J. F. Allen Furniture Company

(Incorporated)

"THE HOME OF DEPENDABLE GOODS"

(Since 1882)

Furniture, Rugs and Stoves

De Land

::

Florida

STEFFIN COMPANY

COUNTRY CLUB ESTATES

IN THE HILLS

De Land

::

Florida

DREKA AND ATHENS THEATRES

I. L. KENNEDY, *Proprietor*

WELCOME, STETSONITES!

Watts Hardware & Furniture Co.

Thirty-four Years in De Land



Hardware

Plumbing

Furniture

Sporting Goods



135-137 North Boulevard

Phone 180

THE FUGLE ORGANIZATION

EVERYTHING IN REAL ESTATE

De Land

::

Florida

THE SUN PUBLISHING COMPANY

PRINTERS : PUBLISHERS

"PRINTING THAT PLEASES"

De Land

::

Florida

Merchants Bank and Trust Company

DAYTONA, FLORIDA

Established in 1896



WE COUNT JOHN B. STETSON UNIVERSITY
AS ONE OF THE PRINCIPAL ASSETS
OF VOLUSIA COUNTY.



OFFICERS:

F. N. Conrad, <i>President</i>	C. M. Bingham, <i>Vice-President</i>
F. J. Niver, <i>Executive Vice-Pres.</i>	S. A. Wood, <i>Vice-President</i>
C. R. Tidwell, <i>Vice-President</i>	A. N. Otis, <i>Cashier</i>
<i>and Trust Officer</i>	R. E. Craft, <i>Assistant Cashier</i>
H. R. Zimmerman, <i>Assistant Cashier</i>	



Commercial Department

Savings Department

Trust Department

Safe Deposit Vaults

NEW YORK BARBER SHOP

John W. Jenkins, *Proprietor*



Courtesy

Service

Cleanliness



"WE STRIVE TO PLEASE OUR PATRONS."

F. M. PATTILLO & COMPANY

EXCLUSIVELY SHOES AND HOSIERY

WE SHOW THE NEW ONES FIRST

107 West Indiana Avenue

De Land, Florida

EDWARDS OVERLAND COMPANY

138 West New York Avenue

WILLYS-KNIGHT : OVERLAND

SALES AND SERVICE

Phone 422-W

STETSONITES—

WE OFFER OUR BEST WISHES AS YOU
ARE LEAVING STETSON THIS YEAR.
WHEN VISITING YOUR ALMA MATER
IN FUTURE YEARS DROP IN AGAIN
TO SAY HELLO.

W. A. ALLEN & COMPANY

THE BUSY DRUGGISTS

COTRELL & LEONARD

Albany, N. Y.

CAPS
GOWNS
and
HOODS



For All Degrees

Selective Materials
Reasonable Prices

Dependable Workmanship

Intercollegiate Bureau of
Academic Costume

THE VANITY BOX

MARCEL WAVING
A SPECIALTY

EUNICE B. WOOD

Phone 386-W Hours: 9-6

204 N. Boulevard

De Land, Florida

THE VOLUSIA COUNTY BANK AND TRUST CO.

INCORPORATED 1889

Resources \$3,000,000

Commercial, Savings, Trust and
Bond Departments

OFFICERS:

S. A. Wood, *President*

F. R. Osborne, *Executive Vice-President and Trust Officer*

F. N. Conrad, E. R. Conrad, *Vice-Presidents*

R. H. Boyd, *Cashier*

E. L. Mickle, *Asst. Cashier and Asst. Trust Officer*

R. G. Bennett, L. W. Pattillo, *Asst. Cashiers*

W. W. WATTS

THE MEN'S SHOP



STYLEPLUS SUITS, SHOES



DE LAND,

::

FLORIDA

Shoes of Distinction

No Matter What the Occasion We have the Correct
Styles at Reasonable Prices in All the Latest
Leathers and Patterns.

It Will Be a Pleasure to Serve You.

ROWLAND'S BOOTERY

"Leaders of Foot Fashion"

132 N. Boulevard

Phone 535

STETSON STUDENTS

Will always find a cordial welcome, as usual, at the

VOLUSIA PHARMACY

Service With a Smile

Phone 108

De Land, Florida

THE ABSTRACT COMPANY

Thos. L. Jackson, *President*

Neill S. Jackson, *Secretary*

Professional Building : Court House Square

De Land, Florida

DE LAND MUSIC COMPANY

EVERYTHING IN THE MUSIC LINE

De Land

::

Florida

McGREGOR & LERCH

ATTORNEYS AND COUNSELLORS AT LAW

De Land

::

Florida

**GREEN'S TAXI & BAGGAGE
TRANSFER**

Sedans

Greetings to Stetson Students

TELEPHONE 11

24-HOUR SERVICE

"Mrs. Green Meets the Trains."

STETSON STUDENTS

Will always find a cordial welcome, as usual, at the

VOLUSIA PHARMACY

Service With a Smile

Phone 108

De Land, Florida

THE ABSTRACT COMPANY

Thos. L. Jackson, *President*

Neill S. Jackson, *Secretary*

Professional Building : Court House Square

De Land, Florida

DE LAND MUSIC COMPANY

EVERYTHING IN THE MUSIC LINE

De Land

::

Florida

McGREGOR & LERCH

ATTORNEYS AND COUNSELLORS AT LAW

De Land

::

Florida

**GREEN'S TAXI & BAGGAGE
TRANSFER**

Sedans

Greetings to Stetson Students

TELEPHONE 11

24-HOUR SERVICE

"Mrs. Green Meets the Trains."

SALES

BUICK
MOTOR CARS

SERVICE

Sixteen models to select from

That good Gulf Gasoline and Supreme Auto Oil

FILLING STATION

:

BUICK GARAGE

COOK AND ROWLAND

When Better Automobiles Are Built, Buick Will Build Them.

*Class Pins and Rings, College Fraternity Pins, Presentation Jewels, Medals
and Badges. Fine Engraved Stationery.
Commencement and Banquet Invitations
Dance Programs, Visiting Cards, Fraternity Stationery*

Superior Quality and Designs

F. N. De HUY & SONS

Jewelers Since 1873

FRATERNITY, COLLEGE AND CLASS JEWELRY
COMMENCEMENT ANNOUNCEMENTS AND INVITATIONS

Jeweler to the Senior Class of John B. Stetson University

L. G. BALFOUR COMPANY

Manufacturing Jewelers and Stationers

Attleboro, Massachusetts

ASK ANY COLLEGE GREEK

REEVE STUDIO



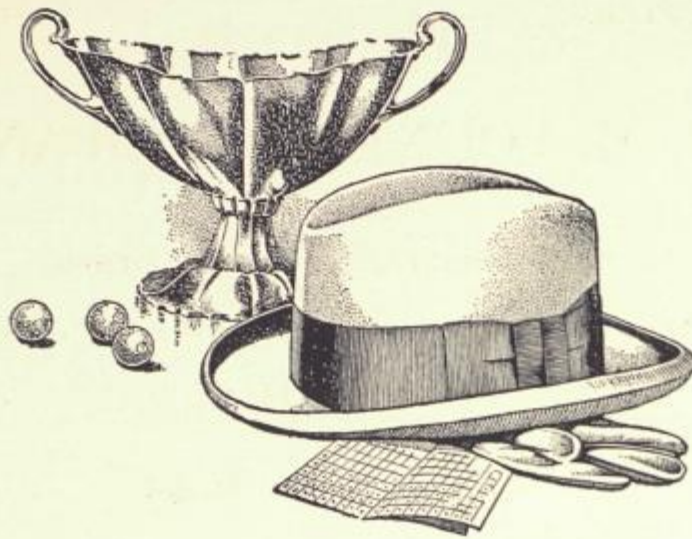
THE BEST PHOTOGRAPHY
IN DE LAND



WE MADE THE PICTURES FOR THE
1926 OSHIHIYI.



Boulevard
DE LAND, FLORIDA



STETSON HATS

STYLED FOR YOUNG MEN

Stetson Hats sell themselves to men who can appreciate real value. With inferior materials such distinctive shapes could not be made nor could the hats give the service that is expected of them. : : : :

JOHN B. STETSON COMPANY

PHILADELPHIA

MEN'S WEAR

FINE SHOES

V. M. FOUNTAIN COMPANY

HART SCHAFFNER & MARX CLOTHES

WALKOVER SHOES

MANHATTAN SHIRTS

STETSON HATS

Service : *Quality*

DE LAND,

FLORIDA

ELECTRICAL CONTRACTING FIXTURES, APPLIANCES
AND SUPPLIES

Finest Fixture Show Room in Florida

Kelvinator Refrigerators

GATES ELECTRIC COMPANY

"Call a Live Wire"—Phone 200

WADE REALTY COMPANY

THE BEST BUYS IN REAL ESTATE

When You Are in The Pollyanna See Us About a Lot

De Land,

::

Florida



The Beelar Private Schools

Benjamin Franklin Beelar, *Principal*

ELEMENTARY GRAMMAR, HIGH SCHOOL, BUSINESS COLLEGE
TEACHERS' COURSES AND SPECIAL COURSES
INDIVIDUAL INSTRUCTION, CORRECT METHODS

We employ no solicitors. Students must come on their own initiative and of their own free will and accord. Unruly and abnormal students will not be taken.

A SCHOOL FOR EARNEST STUDENTS

Students coming to Florida may have their teachers map out their courses and continue here without change of books.

The Beelar Private Schools

TELEPHONE 229

DE LAND, FLA.

McCORMICK LUMBER COMPANY

INCORPORATED



MANUFACTURERS, WHOLESALE AND RETAIL



Lumber and Building Material

HOUSE PLANS GLADLY FURNISHED PROSPECTIVE
BUILDERS

De Land,

Florida

William H. Collier,
President

Claude A. Wright,
Vice-Pres., General Mgr.

Tom B. Stewart,
Secretary-Treasurer

WILLIAM H. COLLIER, Inc.

Investment Brokers

115 W. Indiana Avenue

Telephone 343

De Land, Florida

REAL ESTATE

GENERAL INSURANCE

SUBDIVISIONS

FINANCIAL AGENTS

MORTGAGE LOANS

RENTALS

MEMBERS—CITY, STATE AND NATIONAL REALTY BOARDS.

SANITARY CAFE, Inc.

GEORGE CONDON, *Manager*



SERVICE WITH A SMILE

WHERE THE GOOD EATS COUNT

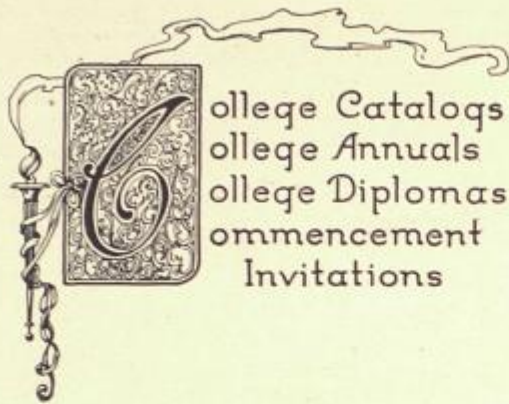
GREENLEAF & CROSBY Co.

JEWELERS, SILVERSMITHS
IMPORTERS

STANDARD
PERFECTED PRODUCTS
MODERATE PRICES

41 WEST BAY STREET

THE STAFF takes this opportunity to express their appreciation for the kindly co-operation from the faculty and students that made this book possible. We wish especially to thank Coach McQuillan for his assistance in the preparation of the athletic section—Prof. and Mrs. Fluhart, who superintended much of the art work—Mr. Orvil Kipp, Miss Olive Wren, Miss Ruth Davis and Miss Anna McMahan, who contributed so generously of their time in preparation of the drawings—and the class officers, organization and fraternity leaders who collected the "cuts."



We are Printers of College Annuals

This annual is a product of our plant.

Our lithographed and copper engraved diplomas are a delightful memento of work well done.

Invitations bearing the Foote & Davies imprint are a fitting announcement of a distinctive party. We design and engrave or print unusual invitations and programs—engrave commencement invitations, monogrammed and fraternity stationery.

Wedding Invitations of the aristocratic Southerner are engraved by us.

Foote & Davies Co.
Atlanta, Ga.

