

# HISTOPATHOLOGICAL IMAGES

## Ovarian Mucinous Carcinoma



Figure 1: Gross specimen of ovarian mucinous carcinoma showing solid and cystic appearance with papillary projections

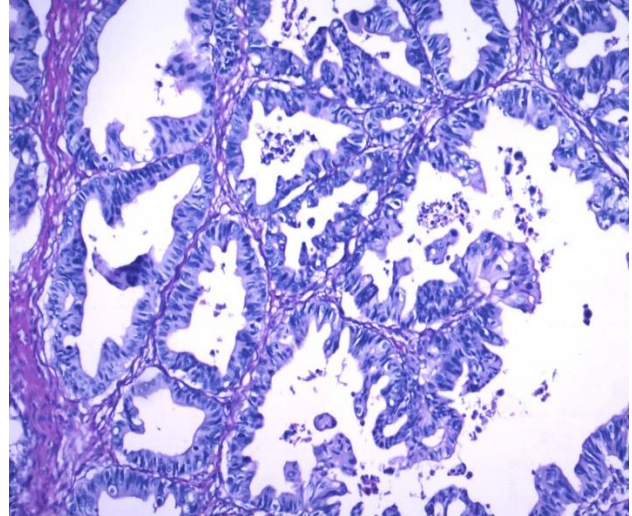


Figure 2: Microscopic view showing a complexity of glands with papillae formation. Cytological features of atypia and stratification are present (H&E X 100)

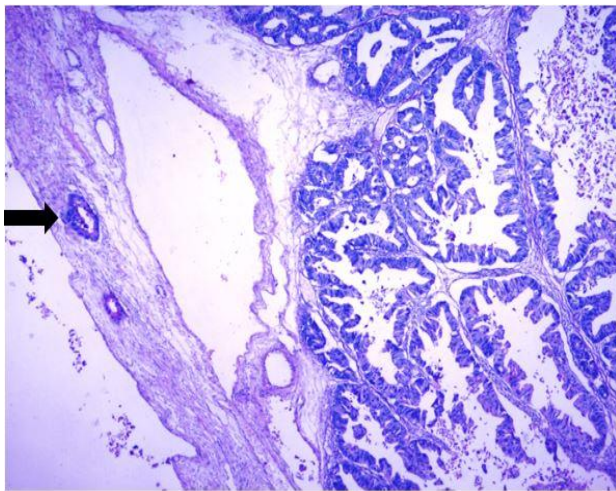


Figure 3: Photomicrograph of Ovarian mucinous carcinoma showing areas of stromal invasion (Arrow) (H&E X 40)

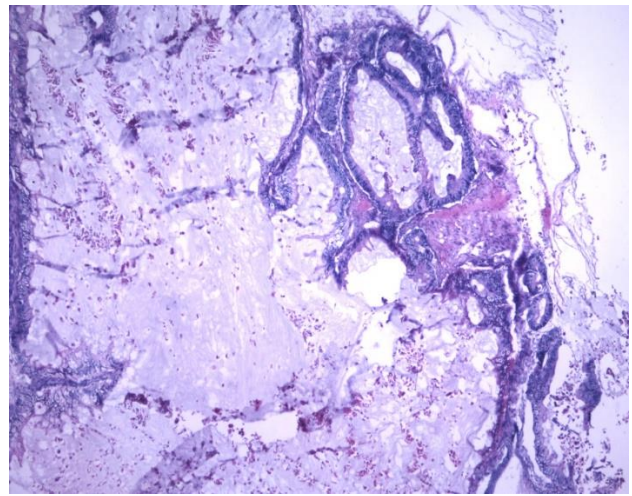


Figure 4: Photomicrograph of Ovarian mucinous carcinoma showing abundant intracellular and extracellular mucin (H&E X 400)

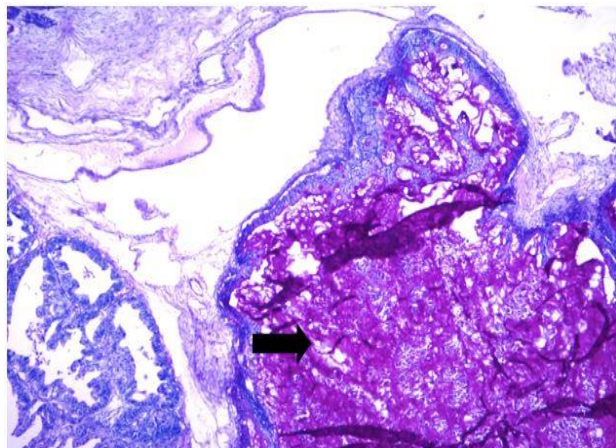


Figure 5: Photomicrograph showing extravasated mucin highlighted by PAS stain (Arrow) (H&E X 100)

## A Case of Huge Lipoma in the Mandibular Region Clinically Masquerading as a Salivary Gland Neoplasm



Figure 1: A 60 year old male presenting with a huge left mandibular swelling



Figure 2: Gross specimen of left mandibular swelling showing a well circumscribed tumor

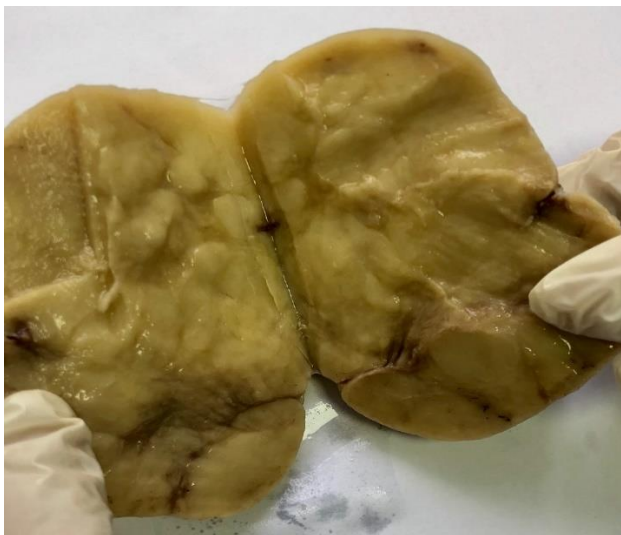


Figure 3: Cut surface of tumor showing a homogeneous yellowish appearance along with focal areas of hemorrhage

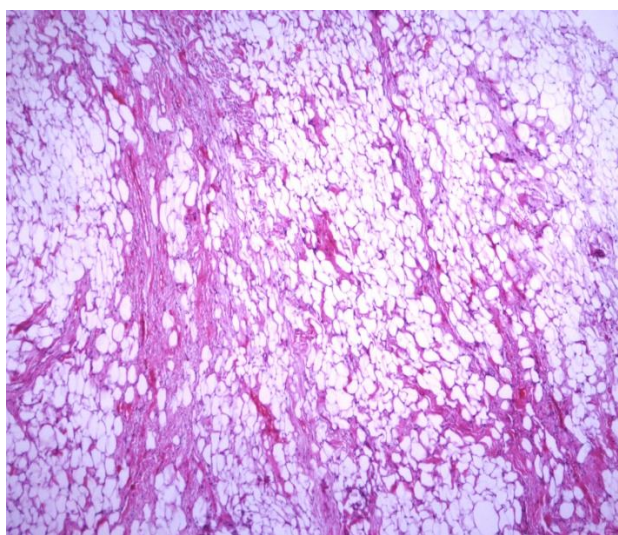


Figure 4: Photomicrograph showing sheets of mature adipocytes separated by fibrous septa consistent with microscopic appearance of lipoma

### Contributed by:

Prof Dr. Saeed Alam, Dr. Huma Mushtaq, Dr. Naima Tariq

Department of Pathology  
Islamabad Medical and Dental College