

BULLETIN OF THE UNIVERSITY OF UTAH

Volume 26

December, 1935

No. 6

Some New Spiders From Florida

BY

WILTON IVIE, University of Utah

AND

W. M. BARROWS, Ohio State University

*BIOLOGICAL SERIES, Vol. III, No. 2*

PUBLISHED BY
THE UNIVERSITY OF UTAH
SALT LAKE CITY

THE UNIVERSITY PRESS
UNIVERSITY OF UTAH
SALT LAKE CITY

NEW FLORIDA SPIDERS

By

WILTON IVIE, University of Utah, and

W. M. BARROWS, Ohio State University.

Herein are described a number of new species of spiders which have been collected in Florida during the last several years. One new species from Oklahoma is also included. The types are deposited in the University of Utah collection; paratypes, where present, are in the collection of W. M. Barrows.

DICTYNIDAE

Lathys dixiana Ivie and Barrows, new species.

(Pl. I. ff. 6-7)

Carapace, chelicerae, endites, labium, and sternum brown,—the carapace with black margins on thoracic part, and with darker markings on head and thorax; the labium and sternum shaded with dusky. Legs light yellowish brown, heavily annulated with blackish, the annuli being distributed thus: two on femur, one on patella, two on tibia, two on metatarsus, none on tarsus. Abdomen light gray marked with black and white spots, as shown in figure.

Structure similar to that of *L. foxi* Marx. It may be distinguished from that species mainly by the color markings on the abdomen, and by the epigynum.

Measurements:

	FEMALE
Length	2.40 mm.
Carapace:	
Length	1.00
Width83
Tibia-patella:	
I	1.03
IV80

Type locality:—Gainesville, Florida. Female holotype, female paratypes. (W. M. Barrows collector, February 1933).

Dictyna florens Ivie and Barrows, new species.

(Pl. I. ff. 1-5)

Color:—Carapace light yellowish to reddish brown, with the usual darker markings on the thorax and sides of head. Chelicerae light orange-brown; sternum, labium, and endites similar, but usually lighter. Legs and palpi pale yellowish, without markings. Abdomen light yellowish to pale yellowish gray, with a bright purplish-red design above, as shown in the figure. Venter without markings.

Epigynum of the ordinary type (see figure). Palpus of male small; embolus slender; tibial spur rather long, over half the diameter of the tibia.

Measurements:

	FEMALE	MALE
Length	2.30 mm.	1.93 mm.
Carapace:		
Length90	.94
Width70	.70
Tibia-patella:		
I93	.67
IV76	.67

Type locality:—Fort Myers, Florida. Male holotype, female allotype; male and female paratypes. (W. M. Barrows collector, Feb. 1933).

Dictyna sublatoides Ivie and Barrows, new species.

(Pl. II. ff. f. 8)

A moderately small species close to *D. sublata* (Hentz), with which it agrees closely in size and structure. Differences in the palpus, notably the tip of the embolus and the caudal process of the conductor, are sufficient to separate it from that species.

Color:—(The single male at hand is freshly molted, and has not acquired its full color.) Carapace light yellowish brown, with the usual dark markings on the thorax and sides of head. Chelicerae light chestnut. Endites light yellowish brown; labium and sternum similar but shaded with dusky. Legs light yellowish without distinct markings. The color pattern of the abdomen is indistinct, but is apparently similar to that of *sublata*.

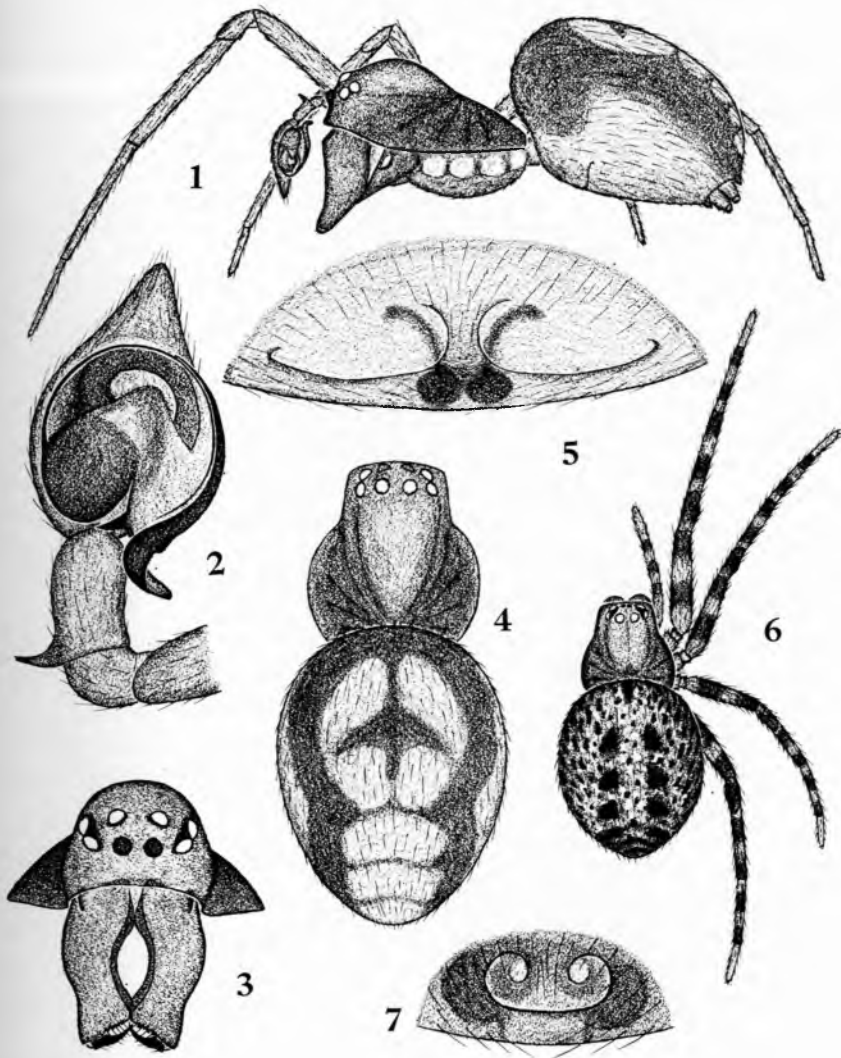


PLATE I

- 1-5. *Dictyna florens* n. sp. 1. Male, lateral view. 2. Left palpus, mesal.
 3. Front of male. 4. Female, dorsal. 5. Epigynum.
- 6-7. *Lathys dixiana* n. sp. 6. Female. 7. Epigynum.

<i>Measurements:</i>	MALE
Length	1.70 mm.
Carapace:	
Length87
Width65
Tibia-patella:	
I90
IV60

Type locality:—Fort Myers, Florida. Male holotype. (W. M. Barrows collector, February 1933).

MICRYPHANTIDAE

Caseola floridana Ivie and Barrows, new species.

(Pl. II. f. 9-14)

Color:—Carapace dull orange, with the area enclosing the eyes black. The chelicerae orange to reddish brown. Sternum, endites, and labium orange brown,—the sternum slightly dusky around the margins, the labium more dusky. Legs and palpi pale brownish orange. Abdomen pale grayish yellow, with the region next to spinnerets and space between epigastric plates dusky.

Structure:—*Female:* Head not elevated; eye area wide. posterior eye row nearly straight. Posterior median eyes about two-thirds diameter apart, slightly farther from lateral eyes. Anterior row straight. Anterior median eyes about a radius apart, scarcely farther from the side eyes. Width of clypeus nearly twice the diameter of the anterior median eyes. Chelicerae of usual type, with six teeth on lower margin and five teeth on upper margin of furrow. Otherwise similar to the characters given for the genus by Emerton.

Male: In general similar to the female, but differing considerably in a number of details: Head much narrower, and more elevated. Posterior eye row procurved. Width of clypeus about four times diameter of anterior median eyes; vertical. Chelicerae more slender than in female; with three teeth one each side of furrow.

<i>Measurements:</i>	FEMALE	MALE
Length	1.80 mm.	1.60 mm.
Carapace:		
Length75	.75
Width56	.55
Tibia-patella:		
I80	.53
IV77	.54

Type locality:—Fort Myers, Florida. Male holotype, female allotype. (W. M. Barrows collector, February 1933).

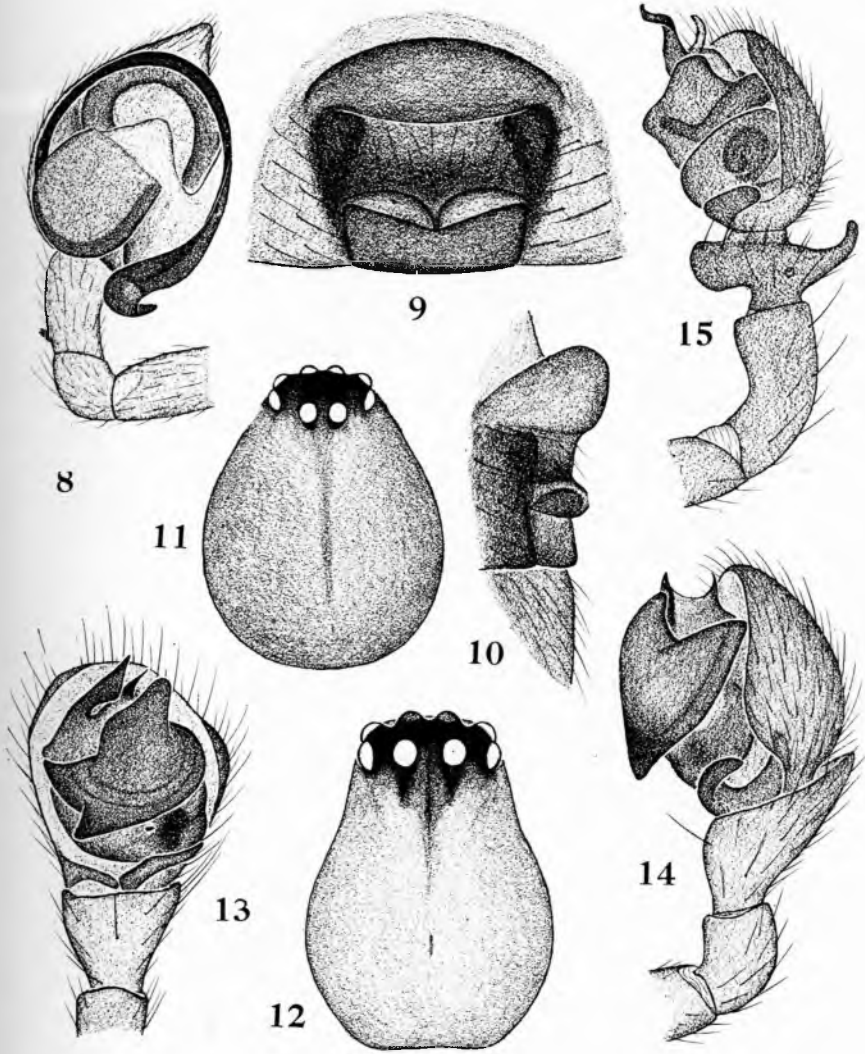


PLATE II

8. *Dictyna sublatoides* n. sp. Left palp, sub-mesal.
- 9-14. *Caseola floridana* n. sp. 9. Epigynum, ventral. 10. Epigynum, lateral. 11. Carapace of male. 12. Carapace of female. 13. Left palp, ventral. 14. Left palp, ectal.
15. *Oedotheorax seminolus* n. sp. Left palp, ectal view.

Oedothorax seminolus Ivie and Barrows, new species.

(Pl. II. f. 15)

Color:—Carapace reddish brown with faint dusky markings of the usual pattern. Chelicerae and endites reddish brown, with lighter tips. Labium and sternum dusky brown. Legs and palpi orange. Abdomen dusky.

Structure:—Carapace without special modifications. Posterior eye row straight; eyes equal and equidistant, about a radius apart. Anterior eye row slightly procurved; median eyes much smaller than the laterals; equidistant, a little less than the diameter of an anterior median eye apart. Clypeus about one and one-half diameters of an anterior lateral eye. Palpus small and simple. Embolus thick and twisted.

Measurements:

	MALE
Length	1.35 mm.
Carapace:	
Length65
Width51
Tibia-patella:	
I56
IV57

Type locality:—Gainesville, Florida. Male holotype. (W. M. Barrows collector, December 29, 1926.)

Erigone hydrophytae Ivie and Barrows, new species.

(Pl. III, ff. 16-19)

Color:—Carapace brown with faint dusky markings. Chelicerae and endites reddish brown. Labium and sternum blackish brown. Legs and palpi light yellowish. Abdomen dark gray or black.

Structure:—Female typical. With two or three small teeth along each antero-lateral corner of the chelicerae. Male in general typical. Margin of carapace and front of chelicerae spined as shown in the figures. A distinct spine on anterior margin of endite. Palpus somewhat resembling that of *E. dentosa* Cambridge; the patella has one or two hooked spines on the under side, as in *dentosa*. The spur on the under side of the tibia, however, is much larger (like in *D. uintana* Chamberlin and Ivie); the palpal organs also differ in details.

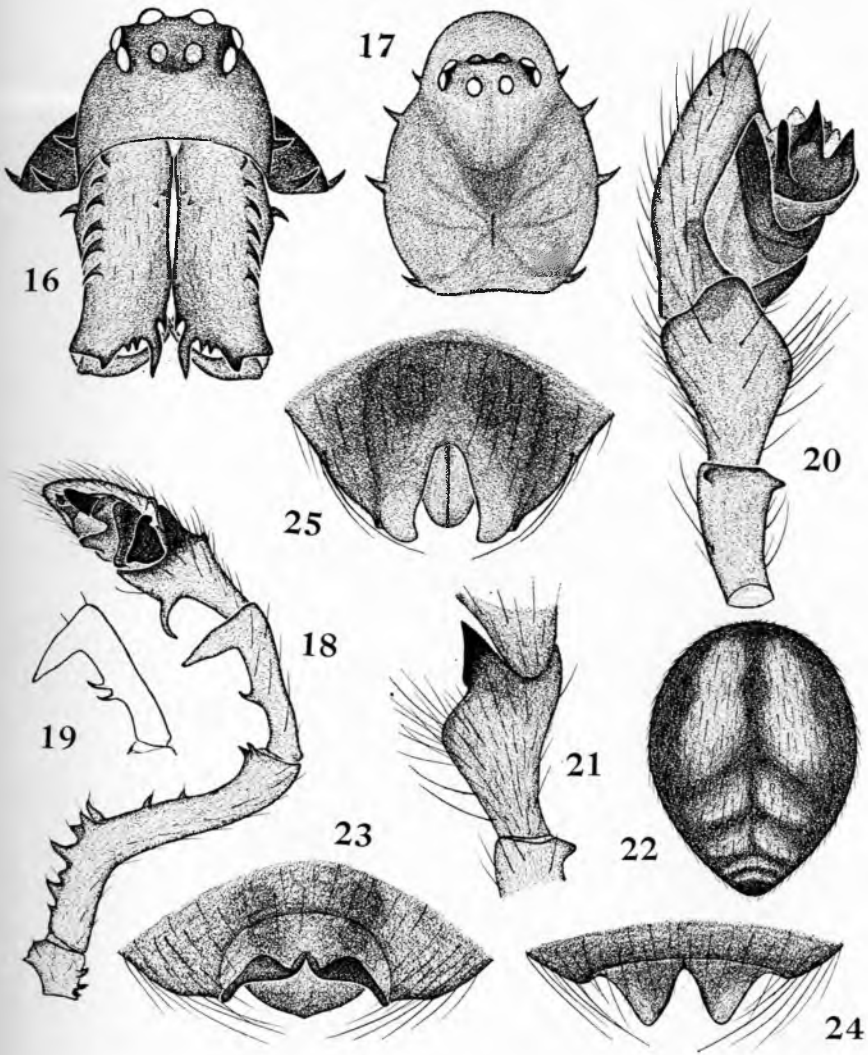


PLATE III

- 16-19. *Erigone hydrophytae* n. sp. 16. Front of male. 17. Carapace of male. 18. Left palpus, ectal. 19. Same, patella from another specimen.
- 20-24. *Eperigone banksi* n. sp. 20. Left palpus, mesal. 21. Tibia of left palpus, dorsal. 22. Abdomen of female. 23. Epigynum, ventral. 24. Epigynum, anterior.
25. *Eperigone serrata* n. sp. Epigynum.

Measurements:

	FEMALE	MALE
Length	2.35 mm.	2.10 mm.
Carapace:		
Length	1.00	1.10
Width80	.80
Tibia-patella:		
I	1.10	1.17
IV	1.10	1.10

Type locality:—Gainesville, Florida. Male holotype, female allotype; male and female paratypes. (W. M. Barrows collector, January 1, 1927.) Found on leaves of water hyacinths.

***Eperigone inornata* Ivie and Barrows, new species.**

(Pl. IV. ff. 31-32)

Color:—Carapace brown. Chelicerae and endites reddish brown. Labium and sternum dusky brown. Legs and palpi straw yellow,—tibia and tarsus of male palpus darker. Abdomen black, without markings.

Chelicerae with a tooth in front, but without teeth along anterior-lateral corner. Palpus distinct, as shown in figures.

Measurements:

	MALE
Length	1.50 mm.
Carapace:	
Length78
Width63
Tibia-patella:	
I75
IV76

Type locality:—Fort Myers, Florida. Male holotype; male paratype. (W. M. Barrows collector, February 1933).

***Eperigone serrata* Ivie and Barrows, new species.**

(Pl. III. f. 25; Pl. IV. ff. 26-27)

Color:—Carapace orange brown. Chelicerae and endites reddish brown. Labium and sternum dusky brown. Legs and palpi straw yellow. Abdomen blackish; dorsal pattern very faint.

Chelicerae with a distinct tooth in front and a row of teeth along anterior-ectal corner. Palpus and epigynum as shown in the figures.

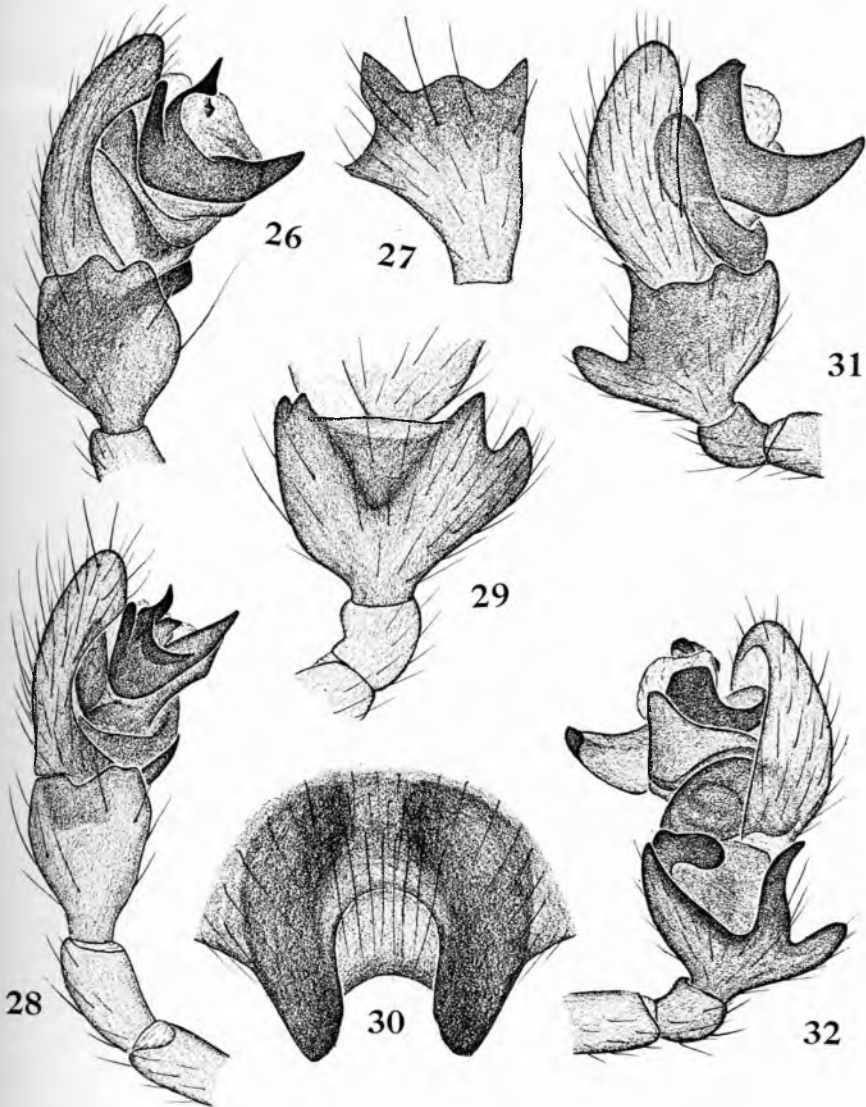


PLATE IV

- 26-27. *Eperigone serrata* n. sp. 26. Left palp, meso-ventral. 27. Tibia of left palp, dorsal.
- 28-30. *Eperigone bryanti* n. sp. 28. Left palp, meso-ventral. 29. Tibia of left palp, ectal. 30. Epigynum.
- 31-32. *Eperigone inornata* n. sp. 31. Left palp, mesal. 32. Left palp, ectal.

<i>Measurements:</i>	FEMALE	MALE
Length	2.24 mm.	1.86 mm.
Carapace:		
Length90	.95
Width65	.74
Tibia-patella:		
I	1.00	1.00
IV	1.00	.95

Type locality:—Fort Myers, Florida. Male holotype, female allotype. (W. M. Barrows collector, February 1933).

Eperigone banksi Ivie and Barrows, new species.

(Pl. III, ff. 20-24)

Color:—Carapace reddish brown, without distinct markings. Chelicerae and endites reddish brown. Labium and sternum dusky brown. Legs and palpi brownish yellow. Abdomen blackish with the usual light pattern above well developed.

Size large for the genus. Endites of male thickened. Chelicerae with a long tooth in front, and a row of teeth along antero-ectal corner.

<i>Measurements:</i>	FEMALE	MALE
Length	3.15 mm.	3.10 mm.
Carapace:		
Length	1.40	1.53
Width	1.04	1.18
Tibia-patella:		
I	1.55	1.60
IV	1.55	1.60

Type locality:—Cocoa, Florida. Male holotype, female allotype; male and female paratypes. (W. M. Barrows collector, Feb. 23, 1925).

Other locality:—Marco Island, Florida. Male paratype. (W. M. Barrows collector, January 1, 1930).

Eperigone bryanti Ivie and Barrows, new species.

(Pl. IV, ff. 28-30)

Color:—Carapace orange brown, with faint dusky markings of the usual pattern. Chelicerae and endites orange brown. Sternum and labium dusky brown. Legs and palpi light yellowish brown. Abdomen gray, with the usual color pattern faintly showing.

Structure:—Essentially typical. Distinguishable by the form of the palpus and epigynum. A distinct tooth on the front of the chelicerae of the male, but none along the antero-ectal corner.

Measurements:

	FEMALE	MALE
Length	1.30 mm.	1.60 mm.
Carapace:		
Length67	.82
Width47	.60
Tibia-patella:		
I60	.70
IV60	.70

Type locality:—Marco Island, Florida. Male holotype, female allotype. (W. M. Barrows collector, January 1, 1930).

Ceraticelus phylax Ivie and Barrows, new species.

(Pl. V, ff. 33-36)

Color:—Carapace, legs, and under parts of the cephalothorax light orange brown,—with the head black or dusky, the sternum faintly shaded with dusky on the margins, and the legs paler. Abdomen light gray, with the chitinous areas light redish brown.

Structure:—Female in general typical. Dorsal sclerite absent on abdomen, but with four small chitinous spots over the muscle impressions. Epigastric region and a small transverse area in front of the spinnerets below chitinized, the epigastric sclerite extending entirely around the pedicel. The dorsum of the male bears a large sclerite. The underside of the abdomen as in the female. Head highly elevated and protruding forward. The eyes situated around the top of this elevation. Palpus large; tibia with a long curved, and very sharp apophysis. Cymbium with a short process on dorsum near base. Details as shown in the figures.

Measurements:

	FEMALE	MALE
Length	1.60 mm.	1.65 mm.
Width54	.63
Carapace:		
Length66	.80
Width54	.63
Tibia-patella:		
I60	.69
IV61	.66

Type locality:—Chickasha, Oklahoma. Male holotype, female allotype. (M. W. Shackelford collector, June 8, 1934).

Grammonota chamberlini Ivie and Barrows, new species.

(Pl. V, ff. 37-39)

Color:—Carapace orange, with head shaded, the interocular area dusky to black; margins dusky, and with the usual dusky markings above, tho faint. Chelicerae light reddish brown. Sternum and labium light yellowish with narrow dusky margins. Endites, palpi and legs bright light yellow,—male palpal organs darker. Abdomen whitish, with a blackish median line from base to nearly the caudal end, and a blackish band along each side above, beginning just back of base and extending to spinnerets, where the two join a dusky band which circles around the sides and top of the spinnerets, but not across lower side. Venter with a dusky splash along each side (usually lacking in male). Spinnerets pale yellowish.

Structure simple. Head of male without special modifications. Palpus and epigynum distinct, as shown by the figures;—the embolus of the male palpus doubles back on itself, making a very sharp bend near the middle.

Measurements:

	FEMALE	MALE
Length	1.67 mm.	1.40 mm.
Carapace:		
Length75	.70
Width60	.54
Tibia-patella:		
I65	.64
IV67	.63

Type locality:—Marco Island, Florida. Male holotype, female allotype; male and female paratypes. (W. M. Barrows collector, January 1, 1930).

Grammonota sclerata Ivie and Barrows, new species

(Pl. VI, ff. 48-51)

Color:—Carapace light yellowish brown, with head darkened and with the characteristic dusky markings,—these markings reduced or absent on the thoracic part. Chelicerae reddish brown. Sternum, endites, and labium dark dusky brown,—the endites with light tips. Legs light straw yellow. Abdomen dark gray, with lighter diffuse markings above, consisting, in well marked specimens, of: a pair of large spots on basal half, followed behind by three chevron-like marks, and a large spot just above the spinnerets. Spinnerets reddish brown. (The abdomen is lighter in color and the markings less distinct in some specimens, especially so in the males.)

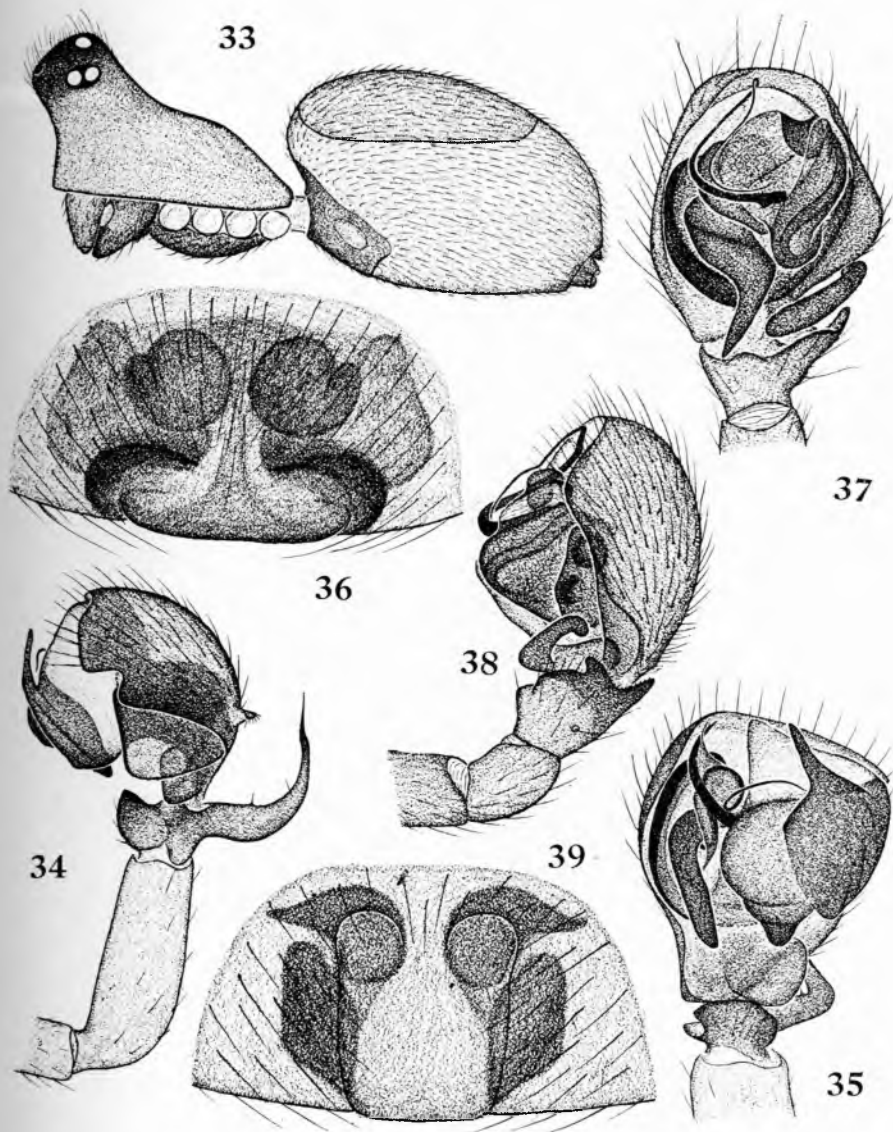


PLATE V

33-36. *Ceraticelus phylax* n. sp. 33. Male, lateral view. 34. Left palp, ectal. 35. Palpus, ventral. 36. Epigynum.

37-39. *Grammonota chamberlini* n. sp. 37. Left palp, ventral. 38. Left palp, ectal. 39. Epigynum.

Structure:—Typical, without special modifications, except for a small chitinous plate on the base of the abdomen,—scarcely visible from above. The palpus and epigynum of the usual type,—except for distinctive details (see figures).

Measurements:

	FEMALE	MALE
Length	1.85 mm.	1.35 mm.
Carapace:		
Length78	.67
Width56	.48
Tibia-patella:		
I60	.55
IV68	.60

Type locality:—Fort Myers, Florida. Male holotype, female allotype; male and female paratypes. (W. M. Barrows collector).

***Floricomus bishopi* Ivie and Barrows, new species.**

(Pl. VI, ff. 40-41; Pl. VII, ff. 55-56)

Color:—Carapace orange brown, head darker and more reddish shaded with dusky across cervical region. Mouth parts, sternum, legs, and palpi orange,—the chelicerae more reddish, and the sternum shaded with dusky around the margins. Abdomen dark gray, with dorsal sclerite reddish brown.

Clypeus of the male with a blunt process protruding forward; head elevated and rounded. Palpus of the same general type as that of *F. plumalis* (Crosby), (see figures). Abdomen of male with dorsal sclerite greatly reduced;—even more reduced, or sometimes apparently absent in females.

Measurements:

	FEMALE	MALE
Length	1.55 mm.	1.50 mm.
Carapace:		
Length67	.80
Width52	.60
Tibia-patella:		
I58	.63
IV65	.67

Type locality:—Gainesville, Florida. Male holotype, female allotype; male and female paratypes. (W. M. Barrows collector, Mar. 1, 1927).

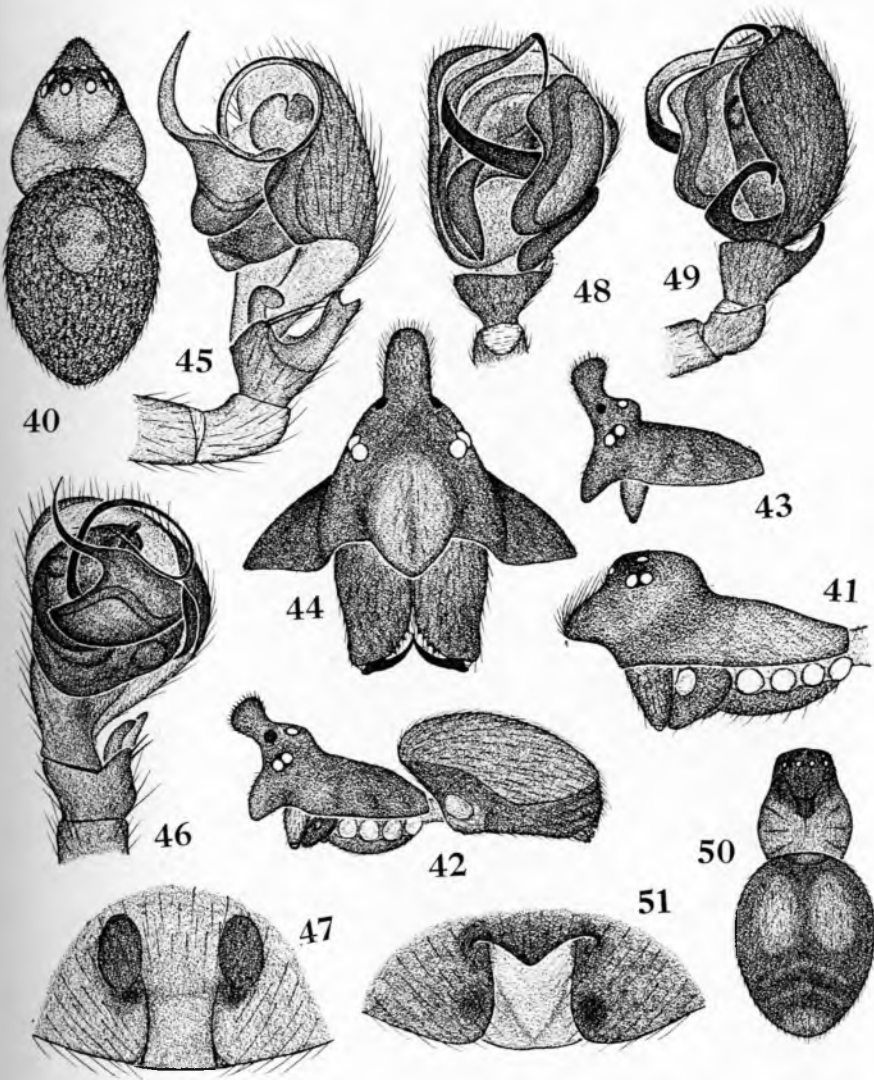


PLATE VI

- 40-41. *Floricomus bishopi* n. sp. 40. Dorsal view of male. 41. Cephalothorax of male, lateral view.
- 42-47. *Floricomus crosbyi* n. sp. 42. Lateral view of male. 43. Male, cephalothorax of a more typical specimen. 44. Front of male. 45. Left palp, ectal. 46. Left palp, ventral. 47. Epigynum.
- 48-51. *Grammonota sclerata* n. sp. 48. Left palp, ventral. 49. Left palp, ectal. 50. Dorsal view of female. 51. Epigynum.

Floricomus crosbyi Ivie and Barrows, new species.

(Pl. VI, ff. 42-47)

Color:—Carapace brown, lightly marked with the characteristic dusky markings. Chelicerae reddish brown. Endites, labium, and sternum light brown, shaded with dusky. Legs and palpi yellowish brown, with the distal half or three-fifths of femur and tibia darker. Abdomen dark gray, with the dorsal plate brownish red.

Structure:—Female typical. Male typical, except for details of palpus and head development. The clypeus is extended and protrudes forward and downward. The head is somewhat elevated in the region of the median ocular area with a vertical knobbed horn extending upward from the front of the elevation. This development of the head has distorted the arrangement of the eyes.

Posterior eye row strongly procurved; the median eyes about a diameter apart, and about a diameter and a half from the lateral eyes. Anterior median eyes located on the sides of the horn at the base and high above the laterals.

Measurements:

	FEMALE	MALE
Length	1.70 mm.	1.40 mm.
Carapace:		
Length67	.73
Width58	.53
Tibia-patella:		
I60	.57
IV61	.59

Type locality:—Cocoa Island, Florida. Male holotype, female allotype; male and female paratypes. (W. M. Barrows collector, Feb. 23, 1925.)

ARGIOPIDAE

Cyclosa nanna Ivie and Barrows, new species.

(Pl. VII, ff. 52-53)

This species most resembles *C. conica* (Pallas) in color and general structure, but is distinguishable from that species by its much smaller size.

Color:—*Female*. Carapace blackish brown, lighter on the anterior part of the head. Chelicerae, endites, and labium dusky black with light spots around the margin. Legs and palpi whitish with narrow indistinct dusky ring at the distal end of each segment, except the trochanters,

femora III and IV, and femur and patella of palpus. Abdomen whitish above, with a black design, somewhat as in certain specimens of *conica*. Venter dusky with a large white spot on each side near middle. Spinnerets black.

Male: Carapace blackish, more brownish about the eyes. Chelicerae brown. Endites and labium blackish at base, pale at tips. Sternum black. Legs light yellowish, with a dusky annulus at the distal end of each segment, except the trochanters, the annuli on femur I being darker than the others and extending nearly half the length. Palpus pale yellowish, except tarsal segment, which is dusky. Abdomen dusky above with an indistinct black pattern on distal half and three white spots on basal half, one basal median and one on each side about two-fifths distance from base. Venter black with a white spot on each side near middle.

Structure:—Similar to that of *conica*,—the female having a single round tubercle on the abdomen.

Measurements:

	FEMALE	MALE
Length	2.60 mm.	2.20 mm.
Carapace:		
Length	1.17	1.17
Width90	.94
Tibia-patella:		
I	1.10	1.00
IV95	.83

Type locality:—Naples, Florida. Male holotype, female allotype. (W. M. Barrows collector, February 4, 1934).

MIMETIDAE

Ero pensacolae Ivie and Barrows, new species.

(Pl. VII, f. 54)

Color:—Color rather faded, but evidently of the same general pattern as that of *furcata* (Villers) and *canionis* Chamberlin and Ivie. The size is smaller than that of the other species. The male may be distinguished by the palpus. The female has four distinct dorsal humps on the abdomen, which are arranged in a curved transverse row, the curve of the row being anteriorly convex; the other species have only two such humps or tubercles.

Measurements:

	FEMALE
Length	2.50 mm.
Carapace:	
Length	1.20
Width	1.00
Tibia-patella:	
I	2.20
IV	1.30

Type locality:—Gainesville, Florida. Male holotype. (W. M. Barrows collector.)

Other locality:—Pensacola, Florida. Female allotype. (W. M. Barrows collector.)

CLUBIONIDAE

Clubiona newmani Ivie and Barrows, new species.

(Pl. VII, ff. 57-58)

Carapace orange, with top of head more yellowish. Sternum, mouthparts, legs, and palpi pale yellowish. Abdomen light yellowish gray.

Head narrow. Chelicerae straight in front. Legs with large spines. Spinnerets long. Palpus as shown in the figures.

Measurements:

	MALE
Length	3.50 mm.
Carapace:	
Length	1.67
Width	1.10
Tibia-patella:	
I	1.50
IV	1.60

Type locality:—Lake Newman, Gainesville, Florida. Male holotype (W. M. Barrows collector).

This is a small species related to *C. abboti*.

Phrurolithus alatus Ivie and Barrows, new species.

(Pl. VIII, ff. 59-62)

This species is similar in all essential respects to other species of this genus, except for the tibial apophyses of the male palpus. These two processes are small and not joined together at the base, but are separate and widely divergent.

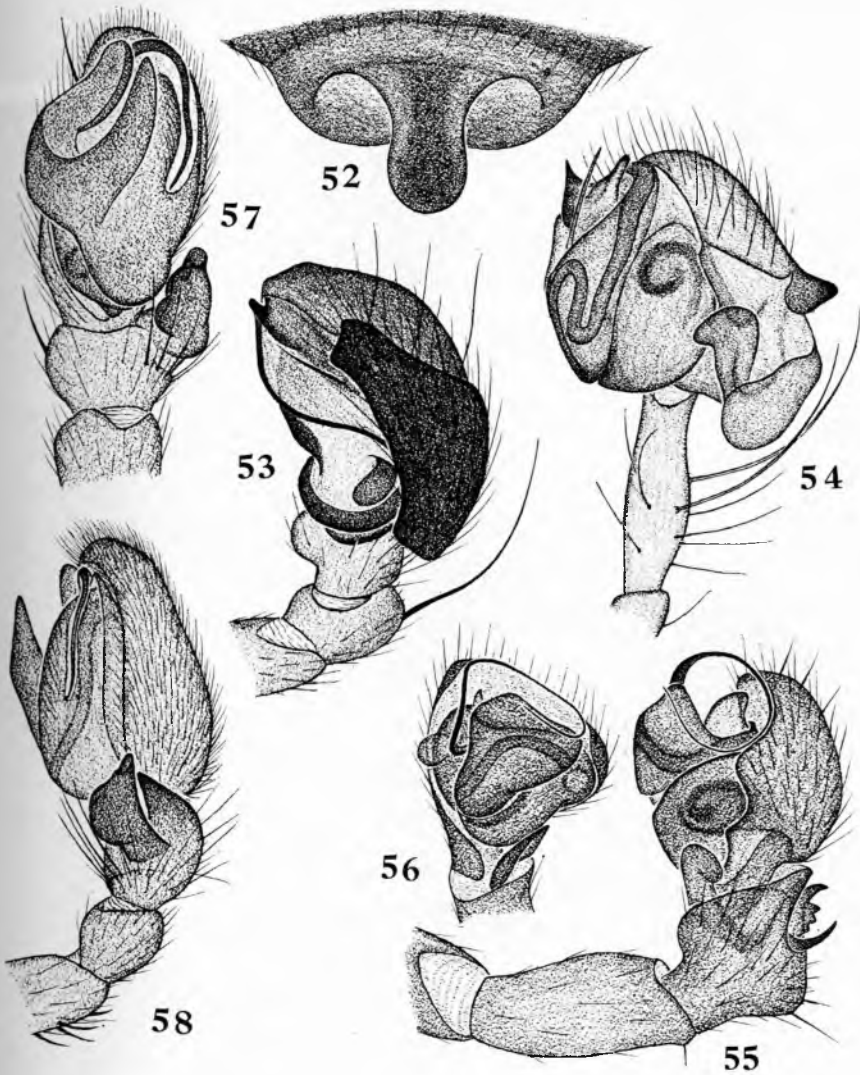


PLATE VII

- 52-53. *Cyclosa nanna* n. sp. 52. Epigynum. 53. Left palpus, ectal.
 54. *Ero pensacolae* n. sp. Left palpus, ectal view.
 55-56. *Floricomus bishopi* n. sp. 55. Left palpus, ectal. 56. Left palpus, ventral.
 57-58. *Clubiona newmani* n. sp. 57. Left palpus, ventral. 58. Left palpus, ectal.

Carapace dusky brown with indistinct reticulate markings of dusky. Under parts of cephalothorax, legs, and palpi light yellowish brown. Abdomen dark gray above, with a white spot on each side just anterior to the middle, a pair of smaller light gray spots near the base and a white spot just above spinnerets. Venter pale gray.

Measurements:

	FEMALE	MALE
Length	1.90 mm.	1.67 mm.
Carapace:		
Length76	.80
Width60	.67
Tibia-patella:		
I86	.90
IV85	.90

Type locality:—Fort Myers, Florida. Male holotype, female allotype. (W. M. Barrows collector, February 1930).

***Phrurolithus pinturus* Ivie and Barrows, new species.**

(Pl. VIII, ff. 63-65)

Color:—Carapace orange yellow with the anterior median and lateral eyes bordered with black, and margins narrowly shaded with dusky. Sternum pale yellowish. Abdomen pale yellowish gray, with black markings above consisting of a pair of spots on basal part, and transverse bands across posterior part. Spinnerets nearly surrounded by black. Venter without markings.

This odd *Phrurolithus* is easily distinguished by the color, and the peculiar form of the epigynum.

Measurements:

	FEMALE	MALE
Length	1.95 mm.	1.80 mm.
Carapace:		
Length85	.82
Width70	.70
Tibia-patella:		
I90	.83
IV94	.83

Type locality:—Fort Myers, Florida. Male holotype, female allotype. (W. M. Barrows collector, winter 1934).

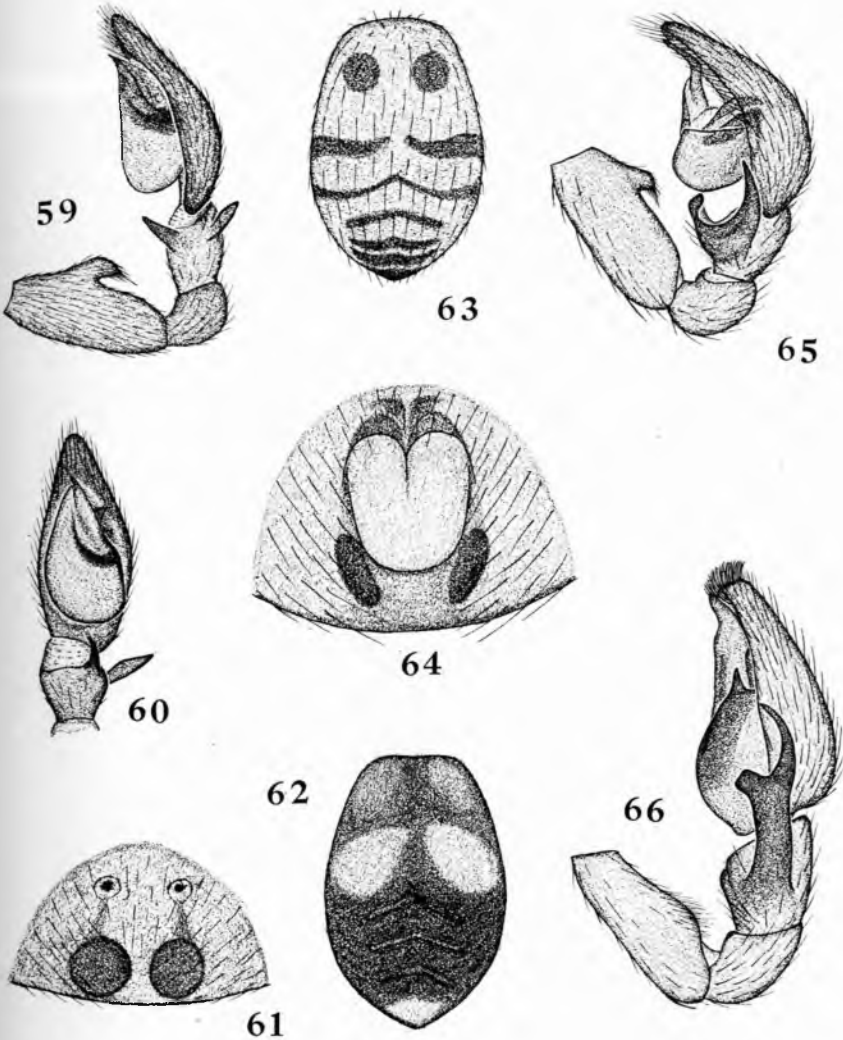


PLATE VIII

59-62. *Phrurolithus alatus* n. sp. 59. Left palp, ectal. 60. Left palp, ventral. 61. Epigynum. 62. Abdomen of female.

63-65. *Phrurolithus pinturus* n. sp. 63. Abdomen of female. 64. Epigynum. 65. Left palp, ectal.

66. *Phrurotimpus subtropicus* n. sp. Left palp, ectal view.

Phrurotimpus subtropicus Ivie and Barrows, new species.

(Pl. VIII, f. 66)

Closely related to *P. woodburyi* (Chamberlin and Gertsch), with which it agrees closely in color and general structure. The size is slightly smaller in this species. The epigynum is of the same form as that of *woodburyi*. The palpus of the male differs in the shape of the tibial apophysis, but is otherwise similar.

Measurements:

	FEMALE	MALE
Length	2.30 mm.	1.95 mm.
Carapace:		
Length	1.00	.90
Width77	.70
Tibia-patella:		
I	1.24	1.07
IV	1.24	1.06

Type locality:—Fort Myers, Florida. Male holotype, female allotype. (W. M. Barrows collector, winter 1934).