

# SCIENTIFIC DATA

**OPEN****DATA DESCRIPTOR**

## The SCOC database, a large, open, and global database with sediment community oxygen consumption rates

Tanja Stratmann <sup>1,2,3\*</sup>, Karline Soetaert<sup>1</sup>, Chih-Lin Wei<sup>4</sup>, Yu-Shih Lin <sup>5</sup> & Dick van Oevelen<sup>1</sup>

Sediment community oxygen consumption (SCOC) rates provide important information about biogeochemical processes in marine sediments and the activity of benthic microorganisms and fauna. Therefore, several databases of SCOC data have been compiled since the mid-1990s. However, these earlier databases contained much less data records and were not freely available. Additionally, the databases were not transparent in their selection procedure, so that other researchers could not assess the quality of the data. Here, we present the largest, best documented, and freely available database of SCOC data compiled to date. The database is comprised of 3,540 georeferenced SCOC records from 230 studies that were selected following the procedure for systematic reviews and meta-analyses. Each data record states whether the oxygen consumption was measured *ex situ* or *in situ*, as total oxygen uptake, diffusive or advective oxygen uptake, and which measurement device was used. The database will be curated and updated annually to secure and maintain an up-to-date global database of SCOC data.

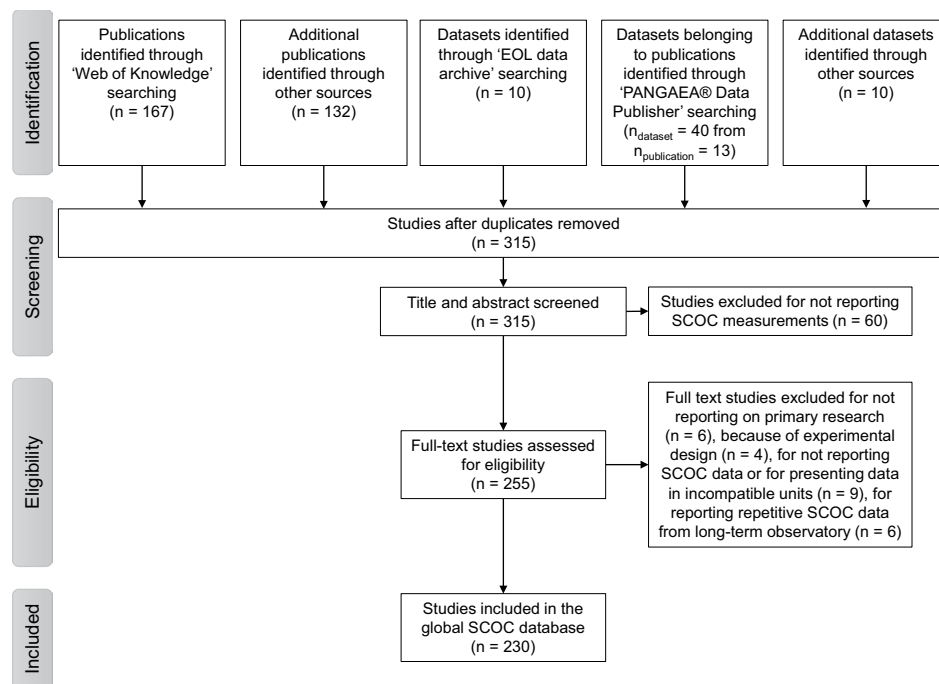
### Background & Summary

Marine sediments play a key role in the global carbon cycle<sup>1</sup>. Organic matter either deposits on sediments as detritus or marine snow, or is produced by phototrophic and chemo-autotrophic organisms. Part of the organic matter is buried on geological time scales, but the largest share is remineralized by abundant prokaryotes, protozoans, and metazoans that are predominantly active in the top 10 to 50 cm of the sediment. Sediment community oxygen consumption (SCOC) is a generally accepted proxy for total organic matter degradation in the marine sediments as it integrates degradation through aerobic activity, autotrophic and heterotrophic nitrification, and re-oxidation of reduced inorganic compounds that were generated during anaerobic heterotrophic degradation of organic matter<sup>2-4</sup>. In abyssal sediments, aerobic respiration dominates SCOC (76% of SCOC<sup>5</sup>), whereas in coastal areas, re-oxidation processes contribute most to oxygen consumption (52 to 76% of SCOC<sup>6</sup>). Hence, SCOC is considered a useful proxy for total organic carbon mineralization and it has been used to derive respiration rates of the deep (>200 m water depth) global seafloor<sup>7</sup>, to calculate the flux of organic carbon to the seafloor<sup>8</sup> and to determine benthos-mediated turnover of carbon at the seafloor<sup>9</sup>.

The general validity of SCOC has initiated the development of global SCOC databases since the mid-1990s<sup>7-9</sup> consisting respectively of 136<sup>8</sup> and 490<sup>7</sup> SCOC measurements taken from 4 m (near-shore areas) to 5,200 m (abyssal plains) water depth and cover the Atlantic Ocean including the Mediterranean Sea, the Pacific Ocean, and the Indian Ocean. The most recent database of global SCOC measurements from 2018<sup>9</sup> comprises 1,075 data points from all ocean basins and the Mediterranean Sea.

In all three cases, however, the database compilation procedure was not transparently described and hence it remains unclear which studies were included in the databases and which exclusion criteria were applied. More

<sup>1</sup>NIOZ Royal Netherlands Institute for Sea Research, Department of Estuarine and Delta Systems, and Utrecht University, P.O. Box 140, 4400 AC, Yerseke, The Netherlands. <sup>2</sup>Marine Biology Research Group, Ghent University, Krijgslaan, 281 58, 9000, Ghent, Belgium. <sup>3</sup>Present address: Department of Earth Sciences, Utrecht University, Vening Meineszgebouw A, Princetonlaan 8a, 3584 CB, Utrecht, The Netherlands. <sup>4</sup>Institute of Oceanography, National Taiwan University, No. 1, Sec. 4, Roosevelt Road, Taipei, 105, Taiwan. <sup>5</sup>Department of Oceanography, National Sun Yet-san University, 70 Lienhai Rd., Kaohsiung, 80424, Taiwan. \*email: [t.stratmann@uu.nl](mailto:t.stratmann@uu.nl)



**Fig. 1** Flow chart showing the database compilation procedure. It describes how publications and datasets were identified and which selection criteria were applied to exclude studies from the final SCOC database.

Source	Document name	Number of studies (records)	Data description	Method
<a href="https://doi.org/10.5061/dryad.25nd083">https://doi.org/10.5061/dryad.25nd083</a>	List of studies (version 1)	315	Alphabetical reference list of studies about sediment community oxygen consumption (SCOC) that were identified following the PRISMA Statement. It is further specified which studies were excluded during the screening process and eligibility assessment.	Literature search
<a href="https://doi.org/10.5061/dryad.25nd083">https://doi.org/10.5061/dryad.25nd083</a>	SCOC database (version 1)	230 (3,540)	All SCOC records included in the SCOC database.	Extraction of SCOC records from literature

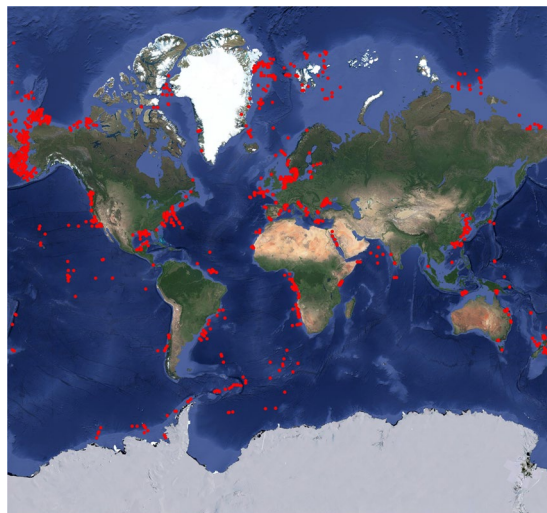
**Table 1.** Specification of the SCOC database with file locations.

importantly even, the actual SCOC values and supporting information, such as geographic location or measurement approach, were not presented or otherwise made available. Hence, the reader cannot judge which studies were omitted, whether low quality data were incorporated and supplement the existing database with new data.

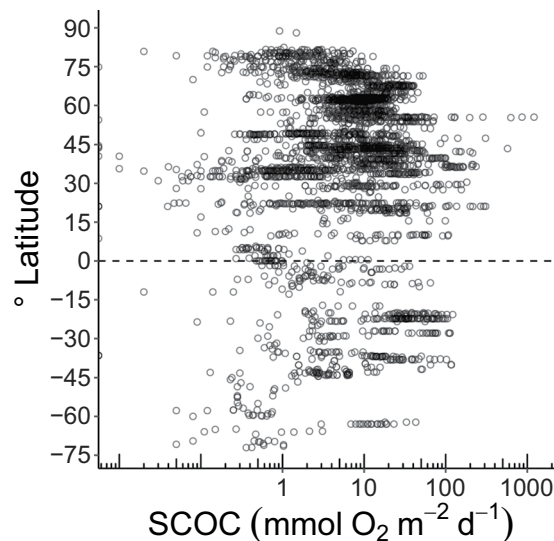
Here, we present the publicly available ‘SCOC database’<sup>10</sup> that contains a list of 315 studies that were identified following the procedure for systematic reviews and meta-analyses<sup>11</sup>. This standardized procedure provided a dataset with 3,540 georeferenced SCOC records (in  $\text{mmol O}_2 \text{ m}^{-2} \text{ d}^{-1}$ ) that were extracted from 230 selected studies. All records include information about how the measurements were taken in the original studies so that researchers can compare novel SCOC data with entries in the database. The SCOC database also allows researchers to select data that were collected with specific techniques for further analyses and it shows which areas in the world are under-sampled and, in this way, may stimulate future sampling campaigns.

## Methods

The SCOC database was compiled in April 2019 following the PRISMA (“Preferred Reporting Items for Systematic reviews and Meta-Analyses”) Statement for systematic reviews and meta-analyses<sup>11</sup> (Fig. 1). In the first phase of the systematic review (Identification), 167 publications were identified in the *Web of Science* using the key words “sediment community oxygen consumption”, “marine benthic respiration” and “benthic oxygen demand”. Additional 132 publications were identified through expert knowledge and examining literature cited in review papers. Using the keywords “sediment respiration oxygen uptake rates”, “benthic respiration”, “SCOC”, “sediment oxygen flux”, “sediment community oxygen consumption”, and “benthic oxygen demand”, 50 datasets were found in the *EOL data archive* (<http://data.eol.ucar.edu/>) and the *PANGAEA® Data Publisher* (<https://www.pangaea.de/>). Further six datasets from the *PANGAEA® Data Publisher* and the *EOL data archive* were found through citations in a review paper and four datasets included unpublished SCOC measurements. After removing duplicates, the titles and abstracts of 315 studies (Table 1) were screened in the Screening phase during which 60 studies were excluded because they did not report marine SCOC measurements. Of these excluded studies, two studies were palaeoceanographic studies, four studies investigated biogeochemical cycling of other chemical



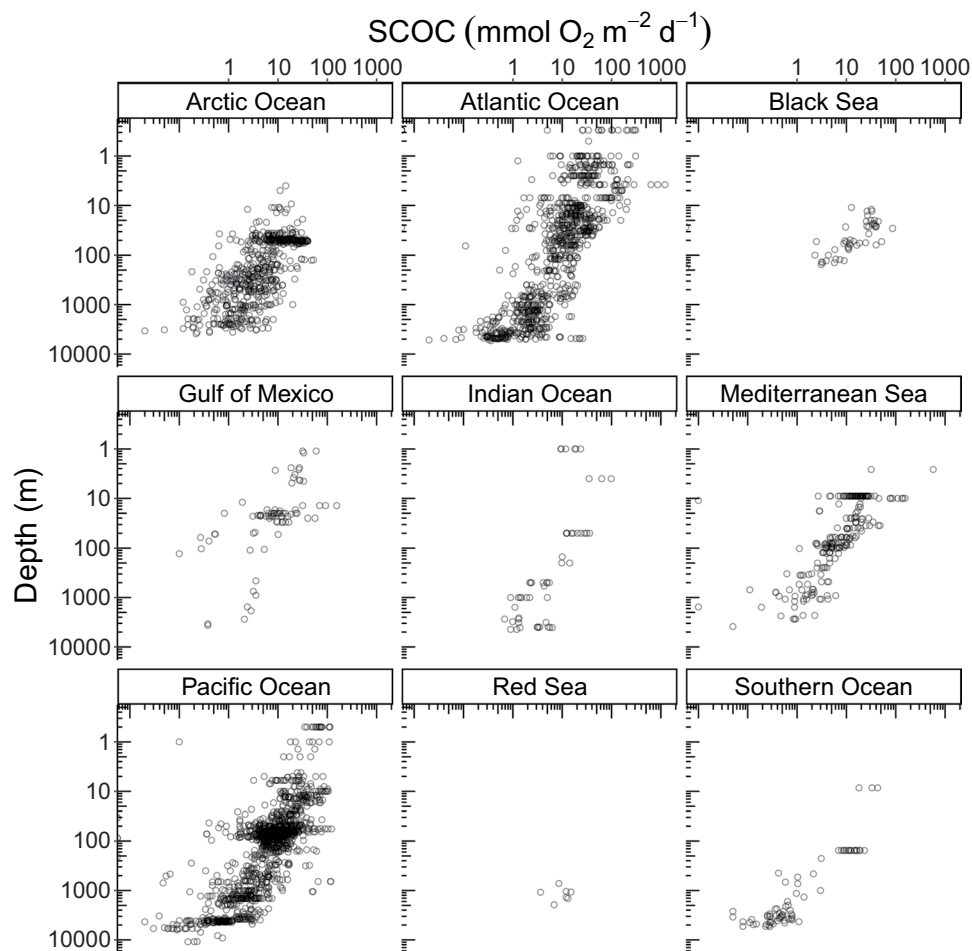
**Fig. 2** Global distribution of sampling stations where sediment community oxygen consumption was measured. Several dots show multiple measurements.



**Fig. 3** Sediment community oxygen consumption ( $\text{mmol O}_2 \text{ m}^{-2} \text{ d}^{-1}$ ) along a latitudinal gradient. Each dot shows a single measurement and the dashed line indicates the equator. Notice the logarithmic scale on the x-axis.

elements (e.g., S, N, Hg), seven studies dealt with the pelagic realm, and one study was about physical oceanography. Furthermore, eleven studies were freshwater studies, ten studies presented models and simulations, nine studies dealt with research about specific (individual) species, two studies were experimental (manipulative) studies, for studies introduced new methods and/or new research instrumentation, two studies were review papers or meta-analyses, three studies reported benthic biomasses or abundances, four studies analyzed specific compounds in the sediment (e.g. total organic carbon, pigments), and one study measured oxygen consumption of a coral reef, but not of the sediment community. In the Eligibility phase, 255 studies were examined of which 25 were excluded because they did not report SCOC data or because of the experimental design of the study. Further reasons for removing studies were the presentation of SCOC data in units that could not be converted to  $\text{mmol O}_2 \text{ m}^{-2} \text{ d}^{-1}$ . Moreover, studies were excluded when they did not report primary research, i.e., original measurements, or when they presented the same measurements from a long-term observatory. The final SCOC database included 230 studies from which a total of 3,540 georeferenced SCOC entries were extracted (Table 1).

When studies did not indicate the exact sampling or measurement location in geographical coordinates (latitude, longitude), but only revealed the sampling area or presented it in maps, the coordinates of the specific location were approximated using *Google Maps*. When data were only presented as mean or median  $\pm$  error term, only the mean and median, respectively, were included in the dataset. In cases where SCOC rates were reported in figures instead of tables, the rates were extracted from the figure using ImageJ<sup>12</sup>.



**Fig. 4** Sediment community oxygen consumption ( $\text{mmol O}_2 \text{m}^{-2} \text{d}^{-1}$ ) along a water depth gradient (m). Notice the logarithmic scale on both axes.

### Data Records

The SCOC database<sup>10</sup> is publicly available on *Dryad Digital Repository* and consists of two csv files, the *List of studies* file and the *SCOC database* file. The *List of studies* specifies alphabetically the references of all 315 studies that were identified during the Identification phase of the systematic review after duplicates were removed. For each data entry, the SCOC database file includes information about the region where the SCOC was measured and the corresponding ocean. The geographical location (latitude, longitude), water depth (in m), and the depth range classification according to Dunne et al. (near-shore area: 0–50 m water depth, continental shelf: >50–200 m water depth, continental slope: >200–2,000 m water depth, continental rise/abyssal plain: >2,000 m water depth)<sup>13</sup> are reported. The database also states whether SCOC (in  $\text{mmol O}_2 \text{m}^{-2} \text{d}^{-1}$ ) was measured *ex situ* or *in situ*, as total oxygen uptake (TOU)<sup>2</sup>, as diffusive oxygen uptake (DOU)<sup>2</sup>, or as advective oxygen uptake (AOU)<sup>14</sup>. In addition, the measurement techniques, i.e., benthic incubation chamber, core incubation, lander with benthic chambers, eddy covariance system, core microprofiling, lander with microprofilers, porewater extraction, and flow through reactors (Online-only Table 1), are tabulated. Information about sediment type and median grain size (in  $\mu\text{m}$ ) are provided whenever possible, as well as information about whether sediments are photosynthetic and whether measurements were conducted in the dark or in the light. The SCOC database will be curated through Dryad and an update of the database with the inclusion of new studies will be created annually.

### Technical Validation

**Geographic and water depth bias.** Between 1968 and 2019, 41.3% of the SCOC measurements were taken in the Pacific Ocean, 35.1% were taken in the Atlantic Ocean (including the Gulf of Mexico and Mediterranean Sea), and 17.7% were taken in the Arctic Ocean (Fig. 2). Most of these measurements were performed in the northern hemisphere between 1.00°N and 88.8°N (84.9%) (Fig. 3). In contrast, only 14.3% of the SCOC data originate from the southern hemisphere between 1.00°S and 72.1°S (Fig. 3), and <1% of the measurements were taken within 1° around the equator (Fig. 3). Especially the Indian Ocean is severely under sampled (2.20% of all data entries; Fig. 2).

Though near-shore areas account for only 2.03% of the global seafloor ( $7.10 \times 10^{12} \text{m}^2$ <sup>13</sup>), 33.7% of all SCOC measurements were taken at  $\leq 50$  m water depth (Fig. 4). In contrast, the continental rises and abyssal plains cover 88.9% of the seafloor ( $3.50 \times 10^{14} \text{m}^2$ <sup>13</sup>), but contributed only 14.1% of the data to the SCOC database (Fig. 4). Hence, the database is biased towards the shallow waters ( $\leq 200$  m water depth) of the Pacific and Atlantic Ocean.

**Differences in sediment community oxygen consumption measurements.** SCOC was quantified as TOU (80.5% of all measurements), as DOU (18.4% of all measurements), and as AOU (0.31% of all measurements). No information about measurement techniques was given for 0.56% of the measurements. As TOU is the sum of DOU, AOU, and benthos mediated oxygen uptake<sup>2,14</sup>, i.e. faunal respiration and irrigation, DOU and AOU are underestimates of the actual SCOC. Glud and colleagues<sup>15</sup>, for example, measured a 10.7 mmol O<sub>2</sub> m<sup>-2</sup> d<sup>-1</sup> higher TOU rate compared to the DOU rate at a 1,747 m deep location in the southern Atlantic Ocean, where a dense population of foraminifera lived. Hence, it is recommended to use SCOC data measured as TOU at sites with high fauna abundance. When no fauna is present, e.g. in many deep-sea sediments, DOU equals TOU in cohesive, impermeable sediments and both values can be used as a proxy for total benthic carbon mineralization rate<sup>2</sup>. However, in permeable, sandy sediments that cover 47% of the continental shelf up to a water depth of <65 m<sup>16</sup>, oxygen uptake via advective porewater transport of oxygen can be more than 1.5 times larger than diffusive oxygen uptake<sup>17</sup>. This advective pore-water transport results from an interaction between bottom water currents and sediment topography<sup>18</sup>. Hence, SCOC measurement techniques that cut natural bottom flows off during sediment incubation, such as sediment core incubations or microprofiling of sediment cores, are not suited to measure SCOC in this type of sediment. Instead, the non-invasive eddy covariance technique should be used for medium to coarse grained sands<sup>19</sup>.

SCOC measurements can vary up to factor of 4 depending on whether they are measured *in situ* or *ex situ*<sup>2</sup>. At water depth >600 m, *ex situ* DOU measurements overestimate SCOC<sup>2</sup>, whereas *in situ* and *ex situ* measurements of SCOC only differ by a factor of 1.3 at 21 m water depth<sup>20</sup>. Therefore, it is recommended to use exclusively *in situ* SCOC measurements at >600 m water depth.

Photosynthesis in photic sediments strongly influences SCOC and leads to differing oxygenated sediment horizons with oxygen supersaturation below the sediment-water interphase and a longer oxygen penetration depth compared to aphotic sediments<sup>2</sup>. This should be considered when SCOC rates from phototrophic systems are used.

### Code availability

The R code used to prepare Figs 3 and 4 can be found in the electronic supplement.

Received: 28 May 2019; Accepted: 2 October 2019;

Published online: 29 October 2019

### References

- Hedges, J. I. & Keil, R. G. Sedimentary organic matter preservation: an assessment and speculative synthesis. *Mar. Chem.* **49**, 81–115 (1995).
- Glud, R. N. Oxygen dynamics of marine sediments. *Mar. Biol. Res.* **4**, 243–289 (2008).
- Middelburg, J. J., Duarte, C. M. & Gattuso, J.-P. Respiration in coastal benthic communities. In *Respiration in Aquatic Ecosystems*. (eds del Giorgio, P. A. & le, B. Williams, P. J.) 206–224, <https://doi.org/10.1093/acprof:oso/9780198527084.003.0011> (Oxford University Press, 2005).
- Ward, B. B. Nitrification in Marine Systems. In *Nitrogen in the Marine Environment* 199–261, <https://doi.org/10.1016/B978-0-12-372522-6.00005-0> (Elsevier, 2008).
- Soetaert, K., Herman, P. M. J. & Middelburg, J. J. A model of early diagenetic processes from the shelf to abyssal depths. *Geochim. Cosmochim. Acta* **60**, 1019–1040 (1996).
- Wang, Y. & Van Cappellen, P. A multicomponent reactive transport model of early diagenesis: Application to redox cycling in coastal marine sediments. *Geochim. Cosmochim. Acta* **60**, 2993–3014 (1996).
- Andersson, J. H. *et al.* Respiration patterns in the deep ocean. *Geophys. Res. Lett.* **31**, L03304 (2004).
- Jahnke, R. A. The global ocean flux of particulate organic carbon: Areal distribution and magnitude. *Global Biogeochem. Cycles* **10**, 71–88 (1996).
- Snelgrove, P. V. R. *et al.* Global carbon cycling on a heterogeneous seafloor. *Trends Ecol. Evol.* **33**, 96–105 (2018).
- Stratmann, T., Soetaert, K., Wei, C.-L., Lin, Y.-S. & van Oevelen, D. The SCOC database – a large, open and global database with sediment community oxygen consumption rates. *Dryad Digital Repository*, <https://doi.org/10.5061/dryad.25nd083> (2019).
- Moher, D., Liberati, A., Tetzlaff, J. & Altman, D. G. Preferred reporting items for systematic reviews and meta-analyses: The PRISMA statement. *PLoS Med.* **6**, e1000097 (2009).
- Schneider, C. A., Rasband, W. S. & Eliceiri, K. W. NIH Image to ImageJ: 25 years of image analysis. *Nat. Methods* **9**, 671–675 (2012).
- Dunne, J. P., Sarmiento, J. L. & Gnanadesikan, A. A synthesis of global particle export from the surface ocean and cycling through the ocean interior and on the seafloor. *Global Biogeochem. Cycles* **21**, GB4006 (2007).
- van der Meer, J. *et al.* Measuring the Flow of Energy and Matter in Marine Benthic Animal Populations. In *Methods for the Study of Marine Benthos* 349–425 <https://doi.org/10.1002/9781118542392.ch8> (John Wiley & Sons, Ltd, 2013).
- Glud, R. N. *et al.* Diffusive and total oxygen uptake of deep-sea sediments in the eastern South Atlantic Ocean: *In situ* and laboratory measurements. *Deep. Res. I* **41**, 1767–1788 (1994).
- Hall, S. J. The continental shelf benthic ecosystem: Current status, agents for change and future prospects. *Environ. Conserv.* **29**, 350–374 (2002).
- Janssen, F., Huettel, M. & Witte, U. Pore-water advection and solute fluxes in permeable marine sediments (II): Benthic respiration at three sandy sites with different permeabilities (German Bight, North Sea). *Limnol. Oceanogr.* **50**, 779–792 (2005).
- Huettel, M. & Gust, G. Impact of bioroughness on interfacial solute exchange in permeable sediments. *Mar. Ecol. Prog. Ser.* **89**, 253–267 (1992).
- Berg, P. *et al.* Oxygen uptake by aquatic sediments measured with a novel non-invasive eddy-correlation technique. *Mar. Ecol. Prog. Ser.* **261**, 75–83 (2003).
- Lansard, B., Rabouille, C. & Massias, D. Variability in benthic oxygen fluxes during the winter-spring transition in coastal sediments: An estimation by *in situ* micro-electrodes and laboratory mini-electrodes. *Oceanol. Acta* **26**, 269–279 (2003).

### Acknowledgements

This manuscript is a contribution to the BiodiverSA project BIO-Tide ‘The role of microbial biodiversity in the functioning of marine tidal flat sediments’ (EU Horizon 2020 ERA-Net COFUND BiodiverSA); financial support was obtained from the Research Foundation – Flanders FWO ERA Biodiversa 3G0H6816 and Belspo BRAIN-be contract BR/175/A1/BIO-Tide-BE. It also received funding from the JPI Oceans – Impacts of deep-sea nodule mining project ‘MiningImpact 2’ (NWO-ALW grant 856.18.003). DvO received additional financial

support from the Netherlands Organisation for Scientific Research (NWO-VIDI grant no. 864.13.007) and TS from the Academy Ecology Fund Grant (Royal Netherlands Academy of Arts and Science). The unpublished SCOC data off the SW Taiwan margin and South China Sea received supports from Taiwan Ministry of Science & Technology (MOST 107-2611-M-002-012).

### Author contributions

T.S. performed the literature search, compiled the database, and wrote the manuscript. D.v.O. and K.S. conceived the idea of the database and assisted in writing the manuscript. C.L.W. and Y.S.L. contributed unpublished SCOC data.

### Competing interests

The authors declare no competing interests.

### Additional information

**Supplementary information** is available for this paper at <https://doi.org/10.1038/s41597-019-0259-3>.

**Correspondence** and requests for materials should be addressed to T.S.

**Reprints and permissions information** is available at [www.nature.com/reprints](http://www.nature.com/reprints).

**Publisher's note** Springer Nature remains neutral with regard to jurisdictional claims in published maps and institutional affiliations.



**Open Access** This article is licensed under a Creative Commons Attribution 4.0 International License, which permits use, sharing, adaptation, distribution and reproduction in any medium or format, as long as you give appropriate credit to the original author(s) and the source, provide a link to the Creative Commons license, and indicate if changes were made. The images or other third party material in this article are included in the article's Creative Commons license, unless indicated otherwise in a credit line to the material. If material is not included in the article's Creative Commons license and your intended use is not permitted by statutory regulation or exceeds the permitted use, you will need to obtain permission directly from the copyright holder. To view a copy of this license, visit <http://creativecommons.org/licenses/by/4.0/>.

The Creative Commons Public Domain Dedication waiver <http://creativecommons.org/publicdomain/zero/1.0/> applies to the metadata files associated with this article.

© The Author(s) 2019