


Title	Association between corneal endothelial cell densities and elevated cytokine levels in the aqueous humor
Author(s)	Yagi-Yaguchi, Y; Yamaguchi, T; Higa, K; Suzuki, T; Aketa, N; Dogru, M; Satake, Y; Shimazaki, J
Journal	Scientific reports, 7(1): -
URL	http://hdl.handle.net/10130/5051
Right	This is an open access article distributed under the terms of the Creative Commons CC BY license, which permits unrestricted use, distribution, and reproduction in any medium, provided the original work is properly cited.
Description	

SCIENTIFIC REPORTS



OPEN

Association between corneal endothelial cell densities and elevated cytokine levels in the aqueous humor

Yukari Yagi-Yaguchi, Takefumi Yamaguchi, Kazunari Higa, Terumasa Suzuki, Naohiko Aketa, Murat Dogru, Yoshiyuki Satake & Jun Shimazaki

Annual reduction rate of corneal endothelial cell density (ECD) varies among etiologies, however, the cause of chronic endothelial cell loss is still unknown. We recently reported the elevation of inflammatory cytokines in the aqueous humor (AqH) in eyes with bullous keratopathy and low ECD. To evaluate the association between ECD and aqueous cytokine levels, we collected a total of 157 AqH samples prospectively. The AqH levels of cytokines were measured and multivariate analyses were conducted to find the correlation between ECD, aqueous cytokine levels and clinical factors, such as number of previous intraocular surgeries and protein concentration in AqH. As a result, ECD was negatively correlated with specific cytokine levels, including IL-1 α , IL-4, IL-13, MIP-1 β , TNF- α and E-selectin (all $P < 0.05$). The aqueous cytokine levels showed different correlations with these clinical factors; the number of previous intraocular surgeries was associated with all cytokines except MIP-1 α . The AqH protein concentration and the status of intraocular lens showed similar patterns of elevation of IL-1 α , IL-4, IL-6, IL-8, IL-10, IL-13, IL-17A, MIP-1 β , MCP-1, E-selectin, P-selectin and sICAM-1. In conclusion, elevation of AqH cytokine levels was associated with reduced ECDs. AqH cytokine levels showed significant correlations with clinical factors associated with low ECDs.

Corneal endothelial cell density (ECD) decreases with age¹, and in various ocular conditions including uveitis and intraocular surgery^{2,3}. Annual rates of ECD reduction are exacerbated after intraocular surgery⁴, and ECD reduction is a serious issue after corneal transplantation because it may lead to endothelial decompensation and loss of vision^{5,6}. Risk factors for postoperative endothelial cell loss after penetrating keratoplasty (PKP) include donor age, recipient age, graft diameter, lens status, glaucoma, graft rejection, and peripheral corneal diseases^{7,8}. We recently reported that severe preexisting iris damage was a risk factor for graft failure and rapid endothelial cell loss after Descemet's stripping automated endothelial keratoplasty (DSAEK)⁹. However, the mechanism of endothelial cell loss in eyes with iris damage is still poorly understood.

Anatomically, the corneal endothelium utilizes many nutrients present in the aqueous humor (AqH), and is located in a privileged and protected environment in the anterior chamber. The AqH has a unique composition that includes proteins, ascorbate, glutathione, glucose and other biologically active substances. Recent clinical studies of the AqH have reported the elevated inflammatory cytokines during various pathological processes^{10,11}. Furthermore, ECDs are lower in eyes with a history of uveitis and are correlated with flare in the anterior chamber, suggesting that environmental factors in the AqH directly influence endothelial cell loss³. In basic research, a combination of proinflammatory cytokines synergistically induced the apoptosis of corneal endothelial cells *in vitro*¹². Recently, we reported the elevation of inflammatory cytokines in eyes with bullous keratopathy and low ECD¹³. Although it is well known that specific clinical factors, such as trabeculectomy, previous intraocular surgeries, uveitis and diabetes lead to decreased ECD^{3,7,8}, to the best of our knowledge, the detailed associations among ECD, clinical factors and aqueous cytokine levels are still poorly understood. Thus, we hypothesized that elevations of aqueous proinflammatory cytokines in eyes with clinical factors are associated with decreased ECD, leading to the development of bullous keratopathy (BK). In this prospective study, we conducted multivariate

Department of Ophthalmology, Ichikawa General Hospital, Tokyo Dental College, Chiba, Japan. Correspondence and requests for materials should be addressed to T.Y. (email: tym.i.eye.i@gmail.com)

No of eyes	157
Age (years)	72.8 ± 11.5
Male/Female	61/73
Axial length (mm)	24.0 ± 2.0
Etiologies Cataract	33
BK	46
FECD	22
Low ECD	13
Post-HSK	8
Corneal epithelial/stromal dystrophy	11
Keratoconus	6
LSCD	1
ECD (cells/mm ²)	1354 ± 1103
CCT (μm)	642 ± 172

Table 1. Demographics of subjects. BK: bullous keratopathy, FECD: Fuchs endothelial corneal dystrophy, ECD: endothelial cell density, HSK: herpes simplex keratitis, LSCD: limbal stem cell deficiency, CCT: central corneal thickness.

Aqueous cytokine levels	Mean	SD	Median
IL-1α	70.21	69.21	50.09
IL-1β	5.94	24.24	1.11
IL-4	32.55	32.45	22.79
IL-6	681.46	1950.78	18.98
IL-8	56.87	107.20	23.56
IL-10	4.77	13.95	1.95
IL-12p70	23.29	190.60	6.56
IL-13	9.24	7.20	7.64
IL-17A	7.02	6.64	4.91
MIP-1α	12.73	10.96	9.57
MIP-1β	464.11	477.97	350.26
MCP-1	636.70	735.00	485.93
TNF-α	125.10	125.45	86.59
GM-CSF	5.71	6.74	3.58
IFN-α	4.92	3.67	4.05
IFN-γ	68.02	59.32	53.45
E-Selectin	2856.09	2294.17	2403.51
P-Selectin	7104.34	12329.52	3909.91
sICAM-1	3114.66	3903.62	1682.69
IP10	395.66	1622.91	107.84

Table 2. Mean cytokine levels in aqueous humor. (pg/ml) IL: interleukin, MIP: macrophage inflammatory protein, MCP: monocyte chemotactic protein, TNF: tumor necrosis factor, GM-CSF: granulocyte-macrophage colony-stimulating factor, IFN: interferon, sICAM: soluble intracellular adhesion molecule, IP10: interferon gamma-induced protein 10.

analyses to determine the association between ECD and cytokine levels in the AqH, and to investigated the clinical factors associated with elevated cytokine levels in AqH.

Results

Association between ECD and AqH cytokine levels. We collected aqueous samples from 157 consecutive patients who underwent corneal transplantation and cataract surgery (Table 1). Table 2 shows the mean cytokine levels in the AqH. Univariate correlation analyses showed that ECDs were negatively correlated with the levels of most AqH cytokine (Table 3; $P < 0.001$ for interleukin [IL]-1α, IL-4, IL-6, IL-8, IL-10, IL-13, IL-17A, macrophage inflammatory protein [MIP]-1β, monocyte chemotactic protein [MCP]-1, tumor necrosis factor [TNF]-α, E-selectin, and soluble intercellular adhesion molecule [sICAM-1], $P = 0.002$ for IL-12p70, $P = 0.001$ for MIP-1α, granulocyte-macrophage colony-stimulating factor [GM-CSF] and P-selectin, $P = 0.01$ for interferon [IFN]-α, $P = 0.016$ for interferon gamma-induced protein [IP]-10). Multiple linear regression analyses showed that ECD had significant negative correlations with IL-13, IL-17A, GM-CSF, IFN-γ, and sICAM-1 (Model 1, stepwise analyses; all, $P < 0.05$), and with IL-1α, IL-1β, IL-4, IL-8, IL-17A, MIP-1β, TNF-α, GM-CSF, E-selectin and sICAM-1 (Model 2, backward elimination analysis; all, $P < 0.05$). The standardized correlation coefficients

Aqueous cytokine levels	Univariate Models*		Multifactorial Model			
	P	P Value	Model 1		Model 2	
			β	P Value	β	P Value
IL-1 α	-0.500	<0.001			-1.166	0.013
IL-1 β	-0.106	0.186			-0.225	0.006
IL-4	-0.404	<0.001			-0.863	<0.001
IL-6	-0.588	<0.001				
IL-8	-0.497	<0.001			-0.227	0.039
IL-10	-0.487	<0.001				
IL-12p70	-0.250	0.002	0.182	0.011	0.185	0.007
IL-13	-0.389	<0.001	-0.584	0.011		
IL-17A	-0.422	<0.001	-0.318	0.001	-0.319	0.009
MIP-1 α	-0.272	0.001			0.582	0.005
MIP-1 β	-0.421	<0.001			-1.067	0.017
MCP-1	-0.284	<0.001				
TNF- α	-0.352	<0.001			-0.881	0.037
GM-CSF	-0.381	0.001	-0.317	0.014	-0.344	0.007
IFN- α	-0.205	0.010				
IFN- γ	-0.146	0.067	0.827	<0.001	2.312	<0.001
E-Selectin	-0.404	<0.001			-1.198	0.007
P-Selectin	-0.273	0.001				
sICAM-1	-0.374	<0.001	-0.213	0.008	-0.186	0.029
IP10	-0.192	0.016	0.229	0.035	0.655	0.001

Table 3. Association between endothelial cell density and aqueous cytokine levels. Spearman's correlation analysis. IL: interleukin, MIP: macrophage inflammatory protein, MCP: monocyte chemotactic protein, TNF: tumor necrosis factor, GM-CSF: granulocyte-macrophage colony-stimulating factor, IFN: interferon, sICAM: soluble intracellular adhesion molecule, IP10: interferon gamma-induced protein 10.

Clinical factors	Univariate Models*		Multifactorial Model			
	P	P Value	Model 1		Model 2	
			β	P Value	B	P Value
LI (+ = 1)	-0.171	0.032	-0.159	0.016	-0.147	0.024
PI (+ = 1)	-0.359	0.000				
IOL (+ = 1)	-0.557	<0.001	-0.315	<0.001	-0.267	0.001
Post KP (+ = 1)	-0.373	<0.001				
Glaucoma	-0.236	0.003				
Trabeculectomy (+ = 1)	-0.226	0.004				
Uveitis (+ = 1)	-0.158	0.048				
DM (+ = 1)	-0.118	0.140			-0.129	0.048
Axial length	0.097	0.231				
Age	0.104	0.204				
No. of Previous surgeries	-0.667	<0.001	-0.319	<0.001	-0.310	<0.001

Table 4. Association between endothelial cell density and clinical factors. ECD: endothelial cell density, LI: laser iridotomy, PI: peripheral iridectomy, IOL: intraocular lens, KP: keratoplasty, DM: diabetes mellitus.

(β) were less than -0.50 for IL-1 α , IL-4, IL-13, MIP-1 β , TNF- α and E-selectin, suggesting that elevation of these cytokines was associated with relatively low ECD in this case series.

Associations between ECD and clinical factors. Table 4 shows the results of univariate correlation analyses and multiple linear regression analyses. Univariate correlation analyses showed that ECD was strongly negatively correlated with most clinical factors including a history of laser iridotomy (LI), peripheral iridectomy (PI), intraocular lens (IOL), post-keratoplasty, glaucoma, trabeculectomy, uveitis, number of previous intraocular surgeries, and the AqH protein concentration. Multiple linear regression analyses showed that ECD was significantly correlated with a history of LI, IOL, diabetes mellitus (DM) and number of previous intraocular surgeries.

Correlations between cytokine levels in AqH and clinical factors. To assess the possible influence of clinical factors associated with ECD, we conducted correlation analyses between cytokine levels in the AqH

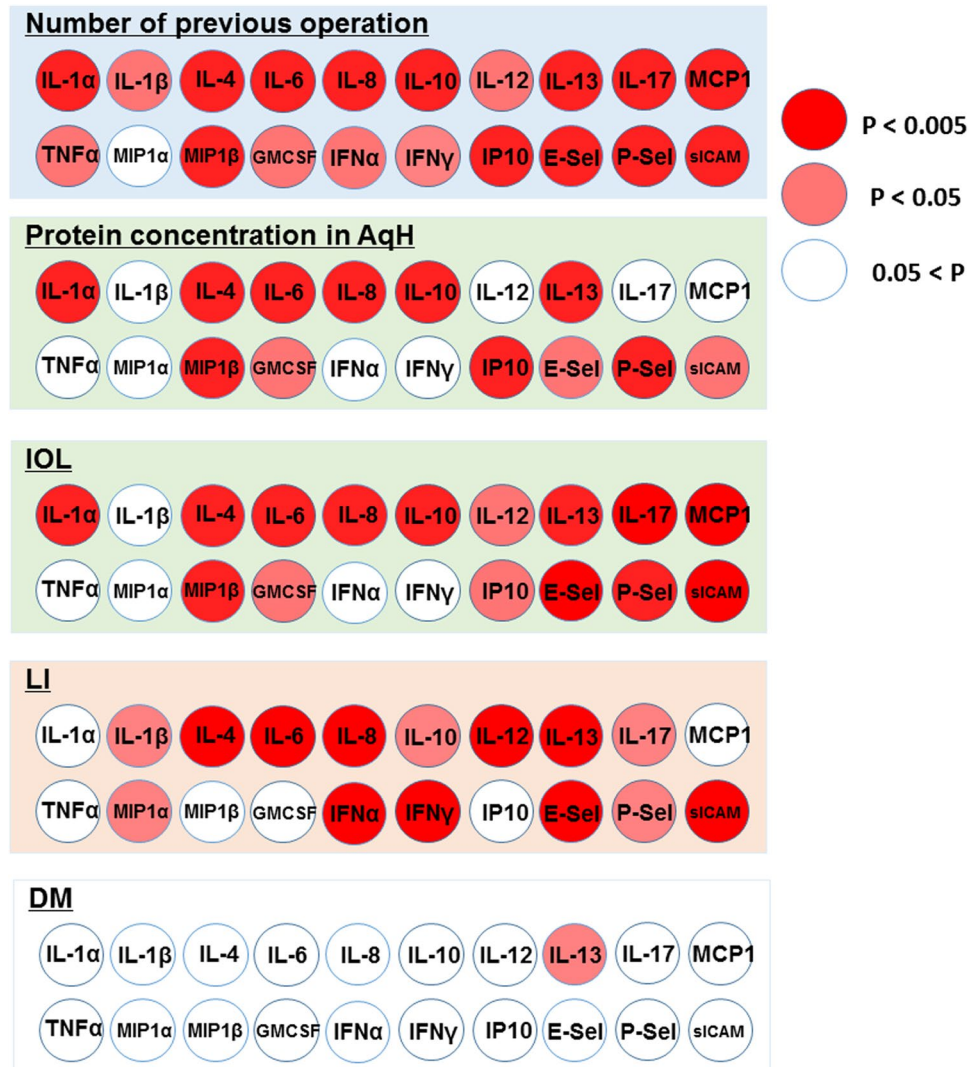


Figure 1. Elevated cytokine levels in AqH showed different correlations with clinical factors associated with endothelial cell density. The number of previous ocular surgeries was strongly positively correlated with levels of IL-1 α , IL-4, IL-6, IL-8, IL-10, IL-13, IL-17A, MIP-1 β , MCP-1, E-selectin, P-selectin, sICAM-1, and IP-10 (all, $P < 0.005$). Protein concentration in the AqH was strongly positively correlated with levels of IL-1 α , IL-4, IL-6, IL-8, IL-10, IL-13, MIP-1 β , sICAM-1, and IP-10 (all $P < 0.005$). The status of IOL was strongly positively correlated with levels of IL-1 α , IL-4, IL-6, IL-8, IL-10, IL-13, IL-17A, MIP-1 β , MCP-1, E-selectin, P-selectin, and sICAM-1 (all, $P < 0.005$). A history of LI was strongly positively correlated with levels of IL-4, IL-6, IL-8, IL-12p70, IL-13, IFN- γ , IFN- α , E-selectin, and sICAM-1 (all, $P < 0.005$).

and clinical factors (Fig. 1). Figure 1 shows the different correlations between elevated cytokines and each clinical factor. The number of previous intraocular surgeries was strongly positively correlated with the levels of IL-1 α , IL-4, IL-6, IL-8, IL-10, IL-13, IL-17A, MIP-1 β , MCP-1, E-selectin, P-selectin, sICAM-1, and IP-10 (all, $P < 0.005$). Protein concentrations in the AqH were strongly positively correlated with the levels of IL-1 α , IL-4, IL-6, IL-8, IL-10, IL-13, MIP-1 β , sICAM-1, and IP-10 (all, $P < 0.005$). The status of IOL was strongly positively correlated with the levels of IL-1 α , IL-4, IL-6, IL-8, IL-10, IL-13, IL-17A, MIP-1 β , MCP-1, E-selectin, P-selectin, and sICAM-1 (all, $P < 0.005$). The presence of LI was strongly positively correlated with the levels of IL-4, IL-6, IL-8, IL-12p70, IL-13, IFN- γ , IFN- α , E-selectin, and sICAM-1 (all, $P < 0.005$).

Discussion

Multivariate analyses of the possible associations between ECD and aqueous cytokines showed that low ECDs were associated with higher levels of specific cytokines, including IL-1 α , IL-4, IL-13, MIP-1 β , TNF- α , and E-selectin. Additional multivariate analyses showed that low ECDs correlated with clinical factors, including a history of LI, the status of IOL, and the number of previous surgery. Moreover, elevated levels of AqH cytokines shows different correlations among clinical factors. The number of previous surgeries was associated with all cytokines except MIP-1 α , whereas a history of LI was associated with elevation of IL-4, IL-6, IL-8, IL-12p70, IL-13, IFN- γ , IFN- α , E-selectin, and sICAM-1.

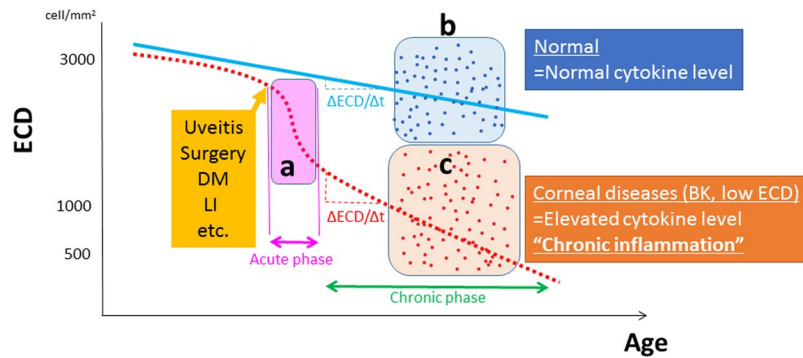


Figure 2. Endothelial cell loss due to chronic inflammation Endothelial cell density (ECD) decreases slowly in normal eyes, and rapidly overtime due to uveitis, intraocular surgeries and laser iridotomy (a). The annual reduction rates ($\Delta ECD/\Delta t$) are small in eyes with normal eyes (b) and large in eyes with elevated cytokine levels (c). This is a cross sectional study and the data in the current study are points surrounded by (b) and (c). X- and Y-axis represent endothelial cell density and age (time), respectively.

Under normal conditions, the adult human cornea loses endothelial cells at a rate of 0.6% per year¹⁴. In contrast, the annual rate of endothelial cell loss is 2.5% per year after cataract surgery¹⁵, and 2.6–7.8% per year after PKP with no postoperative complications^{6,16}. Based on previous clinical studies and our experience^{3,4,8,9,16,17}, specific clinical factors, such as cataract surgery, an anterior chamber IOL, a history of filtering glaucoma surgery, uveitis, and iris epithelial damage accelerate endothelial cell loss. However, the exact mechanism is still poorly understood.

Streilein *et al.*^{18,19} reported the immunosuppressive properties of the AqH in 1990s. In recent years, elevated levels of cytokines in the AqH have been reported to be associated with pathogenesis in various ocular diseases including Fuchs' endothelial corneal dystrophy (FECD)²⁰, graft rejection²¹, glaucoma¹¹, LI¹³, iris damage²² and ocular surface diseases²³. Regarding endothelial cell loss, although the combined stimulation of IL-1 α , IFN and TNF- α synergistically induced apoptosis in corneal endothelial cells *in vitro*¹², the exact mechanism underlying the association between cytokine levels and ECD remains unknown. We speculate that the potential mechanism may be oxidative stress or endoplasmic reticulum (ER) stress. Recent studies on corneal endothelial cells have reported that oxidative stress induces the apoptosis of these cells^{24–27}. Inflammatory cytokines induce the intracellular generation of reactive oxygen species (ROS), and trigger apoptosis via the permeabilization of mitochondrial membrane^{28,29}. Furthermore, prolonged exposure to TNF- α results in the intracellular generation of ROS and the senescence of vascular endothelial cells via the NF- κ B signaling pathway³⁰. Thus, the chronic elevation of cytokine levels in the AqH may increase intracellular oxidative stress in corneal endothelial cells and lead to the reduction of ECD in actual human eyes. The other potential mechanism underlying the results of this study is ER stress. Cytokines are known to be potent inducers of ER stress and to promote the immune-mediated destruction of various types of cells^{31–33}. Cytokine exposure led to generalized ER dysfunction and altered cellular calcium homeostasis prior to the initiation of cell death^{34,35}. Cytokine stress, in particular, causes pathogenic alterations in the intracellular levels of free calcium, such as ER calcium depletion and cytosolic calcium elevation³⁴. In addition, treatment options for preserving the release of functional ER calcium suppress cytokine-mediated beta cell death in diabetes³⁶. Recently, ER stress was discovered to trigger the apoptosis of corneal endothelial cells through the intrinsic signaling pathway^{37,38}. Thus, we postulated that the chronic elevation of aqueous cytokine levels may initiate the apoptosis of corneal endothelial cells via oxidative or ER stress.

We identified the clinical factors associated with reduced ECD that included the number of previous intraocular surgeries, protein concentrations in the AqH, the status of IOL, LI, and DM. Moreover, the correlations with elevated cytokines differed among different clinical factors as shown in Fig. 1. The number of previous intraocular surgeries was associated with elevated levels of all cytokines, except MIP-1 α , whereas LI was associated with elevation of IL-4, IL-6, IL-8, IL-12p70, IL-13, IFN- γ , IFN- α , E-selectin and sICAM-1. The correlations were very similar for the protein concentrations and the status of IOL, except IL-17 and MCP-1. Our results are consistent with Kawai *et al.*¹⁰, who reported that lens epithelial cells secrete MCP-1 after cataract surgery. Eom Y *et al.*³⁹ reported the elevated levels of IL-1 and IFN- γ after LI induced apoptosis of endothelial cells in an animal model. Elevated protein concentrations in the AqH reflect the breakdown of the blood-aqueous barrier (BAB), which leads to decreased ECD^{3,40,41}. One question arises concerning the source of chronically elevated cytokines. In general, cytokines are produced from immune cells in response to specific stimuli, such as infection, trauma, or autoimmune diseases. Iris pigment epithelial cells have immunomodulatory properties^{19,22}. Hence, further evaluation of the causes of chronic inflammation in the anterior chamber are needed in future studies.

In this cross-sectional study, there may have been selection bias because the multivariate analyses could not detect some factors/cytokines associated with ECD loss in the acute phase. We did not include eyes with active inflammation (Fig. 2a). We evaluated normal subjects (Fig. 2b) and patients with corneal diseases, such as those with low ECD, BK and corneal opacities (Fig. 2c). To assess whether the elevated cytokine levels causes endothelial cell loss, the annual rate of reduction in the ECD ($\Delta ECD/\Delta t$) would be an appropriate outcome measure. However, 5–10 years is required to calculate this rate precisely^{6,14,15}. We consider that the associations among

ECD, clinical factors, and cytokine levels in the AqH, enhance the clinical relevance of this study. Elevated proinflammatory cytokines in the AqH can represent “chronic inflammation” in the anterior chamber (Fig. 2). Thus, we confirmed the well-established concept of “*endothelial cell loss due to chronic inflammation*” from the viewpoint of AqH cytokine levels.

This study has some limitations. First, we cannot conclude that elevated levels of proinflammatory cytokines directly caused the decrease in ECD, because the results of this study might be influenced by heterogeneous underlying etiologies, such as FECD, eyes after trabeculectomy or corneal transplantation. Thus, we conducted multivariate analyses to evaluate the associations between aqueous cytokine levels and these different clinical factors. Because some of the subjects in this study underwent corneal transplantation, we plan to conduct correlation analyses between preoperative cytokines in the AqH and the decrease in ECD over time after corneal transplantation as a prospective study, to assess the influence of elevated levels of cytokines on the endothelial cell loss⁴². Third, the effects of cataract surgery, trabeculectomy and corneal transplantation on ECD may differ. Although it is still controversial, trabeculectomy may have the greatest effect on ECD loss, based on previous studies and our clinical experience⁷. Additional multivariate analyses are needed to compare the effects of these surgeries on cytokine levels and long-term ECD after increasing the number of AqH samples.

In conclusion, multivariate analyses showed that lower ECDs were associated with elevated levels of specific cytokines, such as IL-1 α , IL-4, IL-13, MIP-1 β , TNF- α , and E-selectin. ECD was correlated with a history of LI, the status of IOL, and the number of previous surgeries, and elevated cytokine levels in the AqH showed different correlations with these clinical factors. These results suggest a change in the microenvironment in the anterior chamber causes long-term endothelial cell loss as a result of chronic inflammation with elevated levels of inflammatory cytokines.

Methods

This prospective consecutive study was performed in accordance with the Declaration of Helsinki. It was approved by the institutional ethics review board of Tokyo Dental College, Ichikawa General Hospital (I-15-51). Written informed consent was obtained from all participants.

Patients. A total of 157 consecutive patients who underwent corneal transplantation and cataract surgery at Tokyo Dental College from October 2015 to May 2016 were included. We did not perform corneal transplantation or cataract surgery in eyes with active inflammation of the cornea or the anterior chamber. Thus, such eyes were not included in the study. The demographics of the participants are shown in Table 1. No corneal grafts were procured from prisoners.

AqH samples. AqH was obtained under sterile conditions at the beginning of surgery after retrobulbar anesthesia in corneal transplantation or topical anesthesia in cataract surgery. First, paracentesis was placed at the clear cornea. An AqH sample containing 70–300 μ L was obtained using a 27-gauge needle taking care not to touch the iris, lens or corneal endothelium. The samples were centrifuged at 3,000 \times g for 5 min. The soluble fractions were collected and stored at -80° C until cytokine levels could be measured. No corneal grafts were procured from prisoners.

Cytokine level measurements. The cytokine levels (IL-1 α , IL-1 β , IL-2, IL-4, IL-6, IL-8, IL-10, IL-12p70, IL-13, IL-17A, IFN- α , IFN- γ , MCP-1, TNF- α , E-selectin, P-selectin, sICAM-1, GM-CSF, MIP-1 α , MIP-1 β and IP-10) in AqH samples were measured using Luminex (ProcytoPlex kit, Luminex, San Antonio, TX, USA) beads-based multiplex immunoassay according to previous reports⁴³. Briefly, 50 μ L of AqH samples were incubated with antibody-coated capture beads in an incubation buffer at room temperature. After 2-hour incubation, the beads were washed three times using washing buffer and phycoerythrin-labeled streptavidin was added for 30 minutes in the dark at room temperature. After being washed three times with washing buffer, plates were resuspended in 150 μ L of reading buffer, and the assays were performed using a Luminex 200.

Protein concentration measurements. The protein concentrations of AqH samples were determined using the DC protein assay (Bio-Rad, Hercules, CA, USA). The reactions were based on the Lowry assay, and measured according to the manufacturer’s instructions. In brief, bovine serum albumin (BSA) was used as a standard in the range of 0.23–1.37 mg/ml. Samples (5 μ L) of BSA and AqH were added to 96 well microplates, followed by immediate addition of a mixture containing 25 μ L of reagent A + S and 200 μ L of reagent C. After 15 min incubation at room temperature in the dark, the microplates were read at 690 nm and 405 nm using a microplate reader (Bio-Rad, Model550). Concentrations were calculated by the subtraction method using the microplate manager system (Bio-Rad).

Data analysis. ECDs were measured preoperatively using a non-contact specular microscope (Noncon Robo SP-8000, Konan, Hyogo, Japan). Approximately 50 cells were analyzed to obtain mean cell densities. ECD was defined as 300 cells/mm², when it could not be measured using a specular microscope in eyes with severe BK. To identify predictive parameters associated with ECD, we selected the following variables, based on the past studies and our knowledge of endothelial cell loss: a history of LI, PI, IOL, a history of keratoplasty, glaucoma, trabeculectomy, uveitis, DM, axial length, patient age, number of previous intraocular surgeries, and the protein concentration in the AqH.

Statistical analysis. SPSS statistical software for Windows, version 23 (SPSS, Chicago, IL, USA) was used for all statistical analyses, and a P-value less than 0.05 was considered statistically significant. Data are expressed as averages with standard deviation (SD) for continuous variables. The Shapiro-Wilk test was used to assess whether the data showed a normal distribution. Clinical factors, such as a history of LI, PI, IOL, keratoplasty, glaucoma,

trabeculectomy, uveitis, and DM, were dichotomized for univariate and multivariate analyses. To assess the association between the clinical factors, the cytokine levels and ECD, univariate analyses were conducted using Spearman's rank correlations for each variable. Multiple linear regression analysis was conducted using stepwise analysis (Model 1) and backward elimination analysis (Model 2).

References

- Carlson, K. H., Bourne, W. M., McLaren, J. W. & Brubaker, R. F. Variations in human corneal endothelial cell morphology and permeability to fluorescein with age. *Exp Eye Res* **47**, 27–41 (1988).
- Pillai, C. T., Dua, H. S., Azuara-Blanco, A. & Sarhan, A. R. Evaluation of corneal endothelium and keratic precipitates by specular microscopy in anterior uveitis. *Br J Ophthalmol* **84**, 1367–1371 (2000).
- Alfawaz, A. M. *et al.* Corneal Endothelium in Patients with Anterior Uveitis. *Ophthalmology*, <https://doi.org/10.1016/j.ophtha.2016.04.036> (2016).
- Numa, A., Nakamura, J., Takashima, M. & Kani, K. Long-term corneal endothelial changes after intraocular lens implantation. Anterior vs posterior chamber lenses. *Jpn J Ophthalmol* **37**, 78–87 (1993).
- Lass, J. H. *et al.* Baseline factors related to endothelial cell loss following penetrating keratoplasty. *Arch Ophthalmol* **129**, 1149–1154, <https://doi.org/10.1001/archophthalmol.2011.102> (2011).
- Armitage, W. J., Dick, A. D. & Bourne, W. M. Predicting endothelial cell loss and long-term corneal graft survival. *Invest Ophthalmol Vis Sci* **44**, 3326–3331 (2003).
- Writing Committee for the Cornea Donor Study Research, G. *et al.* Donor age and factors related to endothelial cell loss 10 years after penetrating keratoplasty: Specular Microscopy Ancillary Study. *Ophthalmology* **120**, 2428–2435, <https://doi.org/10.1016/j.ophtha.2013.08.044> (2013).
- Bertelmann, E., Pleyer, U. & Rieck, P. Risk factors for endothelial cell loss post-keratoplasty. *Acta Ophthalmol Scand* **84**, 766–770, <https://doi.org/10.1111/j.1600-0420.2006.00726.x> (2006).
- Ishii, N. *et al.* Factors associated with graft survival and endothelial cell density after Descemet's stripping automated endothelial keratoplasty. *Sci Rep* **6**, 25276, <https://doi.org/10.1038/srep25276> (2016).
- Kawai, M. *et al.* Elevated levels of monocyte chemoattractant protein-1 in the aqueous humor after phacoemulsification. *Invest Ophthalmol Vis Sci* **53**, 7951–7960, <https://doi.org/10.1167/iovs.12-10231> (2012).
- Inoue, T. *et al.* Simultaneous increases in multiple proinflammatory cytokines in the aqueous humor in pseudophakic glaucomatous eyes. *J Cataract Refract Surg* **38**, 1389–1397, <https://doi.org/10.1016/j.jcrs.2012.04.028> (2012).
- Sagoo, P., Chan, G., Larkin, D. F. & George, A. J. Inflammatory cytokines induce apoptosis of corneal endothelium through nitric oxide. *Invest Ophthalmol Vis Sci* **45**, 3964–3973, <https://doi.org/10.1167/iovs.04-0439> (2004).
- Yamaguchi, T. *et al.* Elevated Cytokine Levels in the Aqueous Humor of Eyes With Bullous Keratopathy and Low Endothelial Cell Density. *Invest Ophthalmol Vis Sci* **57**, 5954–5962, <https://doi.org/10.1167/iovs.16-20187> (2016).
- Bourne, W. M., Nelson, L. R. & Hodge, D. O. Central corneal endothelial cell changes over a ten-year period. *Invest Ophthalmol Vis Sci* **38**, 779–782 (1997).
- Bourne, W. M., Nelson, L. R. & Hodge, D. O. Continued endothelial cell loss ten years after lens implantation. *Ophthalmology* **101**, 1014–1022; discussion 1022–1013 (1994).
- Ing, J. J., Ing, H. H., Nelson, L. R., Hodge, D. O. & Bourne, W. M. Ten-year postoperative results of penetrating keratoplasty. *Ophthalmology* **105**, 1855–1865, [https://doi.org/10.1016/S0161-6420\(98\)91030-2](https://doi.org/10.1016/S0161-6420(98)91030-2) (1998).
- Hollander, D. A. *et al.* Graft failure after penetrating keratoplasty in eyes with Ahmed valves. *Am J Ophthalmol* **150**, 169–178, <https://doi.org/10.1016/j.ajo.2010.02.014> (2010).
- Streilein, J. W. & Bradley, D. Analysis of immunosuppressive properties of iris and ciliary body cells and their secretory products. *Invest Ophthalmol Vis Sci* **32**, 2700–2710 (1991).
- Streilein, J. W., Okamoto, S., Sano, Y. & Taylor, A. W. Neural control of ocular immune privilege. *Ann N Y Acad Sci* **917**, 297–306 (2000).
- Matthaei, M. *et al.* Epithelial-Mesenchymal Transition (EMT)-Related Cytokines in the Aqueous Humor of Phakic and Pseudophakic Fuchs' Dystrophy Eyes. *Invest Ophthalmol Vis Sci* **56**, 2749–2754, <https://doi.org/10.1167/iovs.15-16395> (2015).
- Maier, P., Heizmann, U., Bohringer, D., Kern, Y. & Reinhard, T. Predicting the risk for corneal graft rejection by aqueous humor analysis. *Mol Vis* **17**, 1016–1023 (2011).
- Aketa, N. *et al.* Iris Damage Is Associated With Elevated Cytokine Levels in Aqueous Humor. *Invest Ophthalmol Vis Sci* **58**, BIO42–BIO51, <https://doi.org/10.1167/iovs.17-21421> (2017).
- Aketa N, *et al.* Elevated aqueous cytokine levels in eyes with severe ocular surface diseases. *Am J Ophthalmol.* in press, <http://dx.doi.org/10.1016/j.ajo.2017.09.029>
- Jurkunas, U. V., Bitar, M. S., Funaki, T. & Azizi, B. Evidence of oxidative stress in the pathogenesis of fuchs endothelial corneal dystrophy. *Am J Pathol* **177**, 2278–2289, <https://doi.org/10.2353/ajpath.2010.100279> (2010).
- Ziaei, A., Schmedt, T., Chen, Y. & Jurkunas, U. V. Sulforaphane decreases endothelial cell apoptosis in fuchs endothelial corneal dystrophy: a novel treatment. *Invest Ophthalmol Vis Sci* **54**, 6724–6734, <https://doi.org/10.1167/iovs.13-12699> (2013).
- Benischke, A. S. *et al.* Activation of mitophagy leads to decline in Mfn2 and loss of mitochondrial mass in Fuchs endothelial corneal dystrophy. *Sci Rep* **7**, 6656, <https://doi.org/10.1038/s41598-017-06523-2> (2017).
- Kim, E. C. *et al.* Screening and Characterization of Drugs That Protect Corneal Endothelial Cells Against Unfolded Protein Response and Oxidative Stress. *Invest Ophthalmol Vis Sci* **58**, 892–900, <https://doi.org/10.1167/iovs.16-20147> (2017).
- Sakon, S. *et al.* NF-kappaB inhibits TNF-induced accumulation of ROS that mediate prolonged MAPK activation and necrotic cell death. *EMBO J* **22**, 3898–3909, <https://doi.org/10.1093/emboj/cdg379> (2003).
- Kim, J. J., Lee, S. B., Park, J. K. & Yoo, Y. D. TNF-alpha-induced ROS production triggering apoptosis is directly linked to Romo1 and Bcl-X(L). *Cell Death Differ* **17**, 1420–1434, <https://doi.org/10.1038/cdd.2010.19> (2010).
- Khan, S. Y. *et al.* Premature senescence of endothelial cells upon chronic exposure to TNFalpha can be prevented by N-acetyl cysteine and plumericin. *Sci Rep* **7**, 39501, <https://doi.org/10.1038/srep39501> (2017).
- Moore, L., Chen, T., Knapp, H. R. Jr & Landon, E. J. Energy-dependent calcium sequestration activity in rat liver microsomes. *J Biol Chem* **250**, 4562–4568 (1975).
- Miani, M., Colli, M. L., Ladriere, L., Cnop, M. & Eizirik, D. L. Mild endoplasmic reticulum stress augments the proinflammatory effect of IL-1beta in pancreatic rat beta-cells via the IRE1alpha/XBP1s pathway. *Endocrinology* **153**, 3017–3028, <https://doi.org/10.1210/en.2011-2090> (2012).
- Kharroubi, I. *et al.* Free fatty acids and cytokines induce pancreatic beta-cell apoptosis by different mechanisms: role of nuclear factor-kappaB and endoplasmic reticulum stress. *Endocrinology* **145**, 5087–5096, <https://doi.org/10.1210/en.2004-0478> (2004).
- Hara, T. *et al.* Calcium efflux from the endoplasmic reticulum leads to beta-cell death. *Endocrinology* **155**, 758–768, <https://doi.org/10.1210/en.2013-1519> (2014).
- Cardozo, A. K. *et al.* Cytokines downregulate the sarcoendoplasmic reticulum pump Ca2+ ATPase 2b and deplete endoplasmic reticulum Ca2+, leading to induction of endoplasmic reticulum stress in pancreatic beta-cells. *Diabetes* **54**, 452–461 (2005).
- Clark, A. L. *et al.* Targeting Cellular Calcium Homeostasis to Prevent Cytokine-Mediated Beta Cell Death. *Sci Rep* **7**, 5611, <https://doi.org/10.1038/s41598-017-05935-4> (2017).

37. Okumura, N. *et al.* Sustained Activation of the Unfolded Protein Response Induces Cell Death in Fuchs' Endothelial Corneal Dystrophy. *Invest Ophthalmol Vis Sci* **58**, 3697–3707, <https://doi.org/10.1167/iovs.16-21023> (2017).
38. Okumura, N. *et al.* Activation of TGF-beta signaling induces cell death via the unfolded protein response in Fuchs endothelial corneal dystrophy. *Sci Rep* **7**, 6801, <https://doi.org/10.1038/s41598-017-06924-3> (2017).
39. Eom, Y. *et al.* The effects of proinflammatory cytokines on the apoptosis of corneal endothelial cells following argon laser iridotomy. *Exp Eye Res* **145**, 140–147, <https://doi.org/10.1016/j.exer.2015.11.022> (2016).
40. Ambrose, V. M., Walters, R. F., Batterbury, M., Spalton, D. J. & McGill, J. I. Long-term endothelial cell loss and breakdown of the blood-aqueous barrier in cataract surgery. *J Cataract Refract Surg* **17**, 622–627 (1991).
41. Lapp, T. *et al.* Identification of Therapeutic Targets of Inflammatory Monocyte Recruitment to Modulate the Allogeneic Injury to Donor Cornea. *Invest Ophthalmol Vis Sci* **56**, 7250–7259, <https://doi.org/10.1167/iovs.15-16941> (2015).
42. Yagi-Yaguchi, Y. *et al.* Preoperative aqueous cytokine levels are associated with a rapid reduction in endothelial cells after penetrating keratoplasty. *Am J Ophthalmol*, <https://doi.org/10.1016/j.ajo.2017.07.005> (2017).
43. Yamaguchi, T. *et al.* Correlation between human tear cytokine levels and cellular corneal changes in patients with bacterial keratitis by *in vivo* confocal microscopy. *Invest Ophthalmol Vis Sci* **55**, 7457–7466, <https://doi.org/10.1167/iovs.14-15411> (2014).

Acknowledgements

This study is supported by the Grant-in-Aid for Scientific Research 15K10906 from the Ministry of Education, Culture, Sports, Science and Technology (TY). The funding organization had no role in the design or conduct of this research.

Author Contributions

T.Y. designed the concept of this study. T.Y., T.S. and K.H. collected data of cytokine and protein levels. Y.Y.Y., T.Y. and N.A. collected the clinical data and conducted statistical analysis. Y.Y.Y. and T.Y. wrote the main manuscript and prepared Tables and Figures. Y.S., D.M. and J.S. revised the manuscript. Y.S., D.M. and J.S. supported the study. All authors reviewed the manuscript.

Additional Information

Competing Interests: The authors declare that they have no competing interests.

Publisher's note: Springer Nature remains neutral with regard to jurisdictional claims in published maps and institutional affiliations.



Open Access This article is licensed under a Creative Commons Attribution 4.0 International License, which permits use, sharing, adaptation, distribution and reproduction in any medium or format, as long as you give appropriate credit to the original author(s) and the source, provide a link to the Creative Commons license, and indicate if changes were made. The images or other third party material in this article are included in the article's Creative Commons license, unless indicated otherwise in a credit line to the material. If material is not included in the article's Creative Commons license and your intended use is not permitted by statutory regulation or exceeds the permitted use, you will need to obtain permission directly from the copyright holder. To view a copy of this license, visit <http://creativecommons.org/licenses/by/4.0/>.

© The Author(s) 2017