

This is a repository copy of *Tailored versus generic knowledge brokering to integrate mood management into smoking cessation interventions in primary care settings : Protocol for a cluster randomized controlled trial.*

White Rose Research Online URL for this paper:
<http://eprints.whiterose.ac.uk/154728/>

Version: Published Version

Article:

Minian, Nadia, Noormohamed, Aliya, Baliunas, Dolly et al. (5 more authors) (2018)
Tailored versus generic knowledge brokering to integrate mood management into smoking cessation interventions in primary care settings : Protocol for a cluster randomized controlled trial. JOURNAL OF MEDICAL INTERNET RESEARCH. e111. ISSN 1438-8871

<https://doi.org/10.2196/resprot.9715>

Reuse

This article is distributed under the terms of the Creative Commons Attribution (CC BY) licence. This licence allows you to distribute, remix, tweak, and build upon the work, even commercially, as long as you credit the authors for the original work. More information and the full terms of the licence here:
<https://creativecommons.org/licenses/>

Takedown

If you consider content in White Rose Research Online to be in breach of UK law, please notify us by emailing eprints@whiterose.ac.uk including the URL of the record and the reason for the withdrawal request.

Protocol

Tailored Versus Generic Knowledge Brokering to Integrate Mood Management Into Smoking Cessation Interventions in Primary Care Settings: Protocol for a Cluster Randomized Controlled Trial

Nadia Minian¹, PhD; Aliya Noormohamed¹, MSPH; Dolly Baliunas^{1,2}, PhD; Laurie Zawertailo^{1,3}, PhD; Carol Mulder⁴, MSc, DVM, CUTL; Arun Ravindran^{1,5}, PhD, MD; Claire de Oliveira^{1,6,7}, PhD; Peter Selby^{1,2,5,8}, BSc, MBBS, MRCP, MD, CCFP, FCFP, MHIthSc, Dip ABA, DFASAM

¹Centre for Addiction and Mental Health, Toronto, ON, Canada

²Dalla Lana School of Public Health, University of Toronto, Toronto, ON, Canada

³Department of Pharmacology and Toxicology, University of Toronto, Toronto, ON, Canada

⁴The Association of Family Health Teams of Ontario, Toronto, ON, Canada

⁵Department of Psychiatry, University of Toronto, Toronto, ON, Canada

⁶Institute for Clinical Evaluative Sciences, Toronto, ON, Canada

⁷Institute of Health Policy, Management and Evaluation, University of Toronto, Toronto, ON, Canada

⁸Department of Family and Community Medicine, University of Toronto, Toronto, ON, Canada

Corresponding Author:

Peter Selby, BSc, MBBS, MRCP, MD, CCFP, FCFP, MHIthSc, Dip ABA, DFASAM

Centre for Addiction and Mental Health

100 Stokes Street

Toronto, ON, M6J 1H4

Canada

Phone: 1 416 535 8501 ext 36859

Email: peter_selby@camh.net

Abstract

Background: Both tobacco smoking and depression are major public health problems associated with high morbidity and mortality. In addition, individuals with depression are almost twice as likely to smoke and less likely to achieve smoking cessation. In the Smoking Treatment for Ontario Patients program, an established smoking cessation program in Ontario, Canada, 38% of smokers in primary care settings have current or past depression with 6-month quit rates that are significantly lower than those without depression (33% versus 40%, $P < .001$). Integrating self-help mood management (eg, relaxation exercises and mood monitoring) with smoking cessation treatment increases long-term quit rates by 12%-20%. However, integration in real-world settings has not been reported. It is unclear which knowledge translation strategy would be more effective for motivating clinicians to provide resources on mood management to eligible patients.

Objective: The objectives of this study are to investigate the following comparisons among depressed smokers enrolled in a smoking cessation program: 1) the effectiveness of generalized, exclusively email-based prompts versus a personalized knowledge broker in implementing mood management interventions; 2) the effectiveness of the two knowledge translation strategies on smoking quit rates; and 3) the incremental costs of the two knowledge translation strategies on the implementation of mood management interventions.

Methods: The study design is a cluster randomized controlled trial of Family Health Teams participating in the Smoking Treatment for Ontario Patients program. Family Health Teams will be randomly allocated 1:1 to receive either generalized messages (related to depression and smoking) exclusively via email (group A) or be assigned a knowledge broker who provides personalized support through phone- and email-based check-ins (group B). The primary outcome, measured at the site level, is the proportion of eligible baseline visits that result in the provision of the mood management intervention to eligible patients.

Results: Recruitment for the primary outcome of this study will be completed in 2018/2019. Results will be reported in 2019/2020.

Conclusions: This study will address the knowledge gap in the implementation strategies (ie, email-based prompts versus a knowledge broker) of mood management interventions for smokers with depression in primary care settings.

Trial Registration: ClinicalTrials.gov NCT03130998; <https://clinicaltrials.gov/ct2/show/NCT03130998> (Archived on WebCite at www.webcitation.org/6ylyS6Rte)

(*JMIR Res Protoc* 2018;7(4):e111) doi: [10.2196/resprot.9715](https://doi.org/10.2196/resprot.9715)

KEYWORDS

tobacco; depression; health care practitioner; primary health care; knowledge broker; clinical decision support system; screening; brief intervention; integrated care pathways

Introduction

Background

Both tobacco smoking and depression are major public health problems with high morbidity and mortality [1-4]. Individuals with depression are almost twice as likely to be smokers [5-7], have lower long-term smoking abstinence (odds ratio [OR] 0.81, 95% CI 0.67-0.97) [1], and experience greater addiction severity and negative mood when quitting smoking [8-11].

Self-help mood management (eg, relaxation exercises and mood monitoring) integrated with smoking cessation treatment increases long-term quit rates by 12%-20% [3,4,12-15]. However, it remains unclear what knowledge translation (KT) strategy would be most effective in engaging practitioners to implement a mood management integrated care pathway (ICP) into primary care settings [16-20]. Two strategies that are commonly used in Canada to promote evidence-based practices include email communications and knowledge brokers (KBs) [17]. Emails provide targeted messages that connect relevant research evidence to specific practitioners, while KBs work one-on-one with practitioners to facilitate the implementation of an evidence-informed intervention [21]. Several studies have shown that context where the intervention is being implemented is essential to take into account, in deciding which KT strategy to use [16,17]. Unfortunately, it is not known which of these KT strategies would be the most effective among Family Health Teams (FHTs) in Ontario, Canada. In Ontario, FHTs are primary health care organizations that include a team of family physicians, nurse practitioners, registered nurses, social workers, dietitians, and other professionals who work together to provide primary health care for their community [21].

Objective

This study aims to assess whether email updates versus a KB (who will communicate with health care providers on an as-needed basis) is more effective at enabling practitioners within FHTs to provide their patients with mood management resources when needed. In addition, it will explore which of these KT strategies has the greatest effect on smoking abstinence and depressive symptoms at time of follow-up. We will also examine the incremental cost effectiveness of the two KT strategies, the proportion of eligible smokers who report using the resources, smoking cessation outcomes compared to patients without depressive symptoms, and practitioner improvement in knowledge, attitudes, skills, and satisfaction in addressing depressive symptoms in smokers.

In this paper, we describe the protocol for a cluster randomized trial. This design was chosen because the intervention cannot be delivered to individual practitioners within a clinic without

substantial risk of contamination across study arms. The trial will be operationalized through the Smoking Treatment for Ontario Patients (STOP) program, an established smoking cessation program in Ontario, Canada. The STOP program offers up to 26 weeks of smoking cessation treatment, consisting of nicotine replacement therapy and behavioral counseling, at no cost to the patient.

Methods

Inclusion Criteria

Site Level

Family Health Teams (FHTs) in Ontario, Canada implementing an existing smoking cessation program (ie, the STOP program) and using the STOP's online portal at the time of the study are eligible to participate. All FHTs operational in the STOP program as of November 2017 (n=153) will be eligible for randomization, except for those that do not use the online program portal at the time of patient enrollment (n=25). We anticipate that 128 FHTs will be randomized into the trial.

Patient Level

In order for a participant to be eligible for the trial, their baseline enrollment survey must be administered by the health care provider, in English, into the online portal in real time, so that the clinical interaction can be supported by the STOP portal. Therefore, those patients who are administered the baseline survey on paper, or in French, will be excluded. Patients, at the time of enrollment, must have depression (determined by a Patient Health Questionnaire [PHQ-9] score >9) or report a past diagnosis of depression.

Pre-Implementation

To understand the needs of the FHTs and the importance of treating depression in the smoking cessation program, we developed a survey which measures organizational readiness and the extent to which an organization is willing and able to implement a specific intervention [22]. The survey consists of 12 questions addressing the six components of The National Implementation Research Network's Hexagon Tool (ie, need, fit, resources, evidence, readiness, and capacity) [23], as well as the three readiness components described by Scaccia et al [24] (ie, motivation, general capacities, and specific capacities) [24]. Based on answers to this survey, organizations were grouped into two categories: most ready (n=44), and least ready (n=40). Organizations that did not answer the questionnaire (n=41) will be grouped together in a group labeled "unknown readiness." The detailed answers from this survey will be useful for developing a KT strategy that will allow the project team

to make informed decisions about their approach to change management.

In order to increase practitioners' competencies to deliver a brief mood management, two interactive webinars will be presented to communicate best practices for integrating evidence-based mood interventions into smoking cessation programming. The webinar audience will include the STOP Community of Practice (n=300) consisting of implementers, physicians, and executive directors, who interact through bi-weekly teleconferences to communicate updates, clarify procedures, address barriers or gaps in program delivery, and share experiences with other practitioners.

Trial Design

Study clusters (ie, FHTs) will receive either generalized messages (related to depression and smoking) exclusively through email (group A) or be assigned a KB who will provide personalized support through phone- and email-based check-ins (group B).

Practitioners from group A will receive one email per month for one year. The first email will provide an electronic copy of a relevant Cochrane review [15], and a short description of the new depression ICP that will be integrated into the STOP portal. Subsequent communications will be based on general needs identified throughout the study. Practitioners from group B will receive individualized support from a KB communicating through interactive technology (ie, Skype) on an as-needed basis. The KB will be certified in tobacco cessation counseling and will have completed a specialty course on tobacco addiction treatment for individuals with mental illness [25,26].

Clinics are the unit of randomization. Two stratification factors are defined: (1) organizational readiness (described previously) with three levels, and (2) clinic size with two levels, resulting in six strata. Expected clinic size will be estimated based on past STOP enrollment because the actual number of eligible trial participants clinics will enroll is not directly observable a priori. Within each readiness stratum, the two levels of clinic size were set such that expected total enrollment in the two levels would be balanced. Within each of the six combined strata, clinics were randomly allocated in a 1:1 allocation ratio to control (group A) or intervention (group B). Treatment allocation (randomization) for each clinic was determined for all operational clinics en masse. Any clinic that began implementing the STOP program after the randomization cut-off date (Nov 14, 2017) will not be eligible for participation in the trial. The random assignment of treatment to clinic was computer generated using the ralloc command of statistical computer software Stata V.14.

Blinding

This pragmatic, cluster trial is designed to evaluate an intervention to change practitioners' behavior. Blinding of the clinic through its practitioners will therefore not be possible as the practitioner will be aware of the presence or absence of the KB. Participating clinics will not be informed of their treatment allocation until the trial begins. Data analysis will be blinded to treatment allocation.

Interventions

Patient Screening and Brief Intervention

Across all sites, practitioners will receive the same depression ICP integrated into the STOP portal. Currently, patients are asked to self-report on past diagnosis of depression and screened for current depression using the PHQ-9. The PHQ-9 is a self-completed, 9-item instrument with each item aligning with the Diagnostic and Statistical Manual of Mental Disorders (version IV)'s criteria for depression, and developed specifically for use in primary care [27,28]. As part of the new ICP, the STOP portal will identify patients screened as having current or past depression, and prompt practitioners to provide a brief intervention and refer an evidence-based package of resources [29,30] (see Figure 1). Brief intervention messaging will be designed using the Canadian Network for Mood and Anxiety Treatments guidelines [31] and tailored to patients' depression levels based on their PHQ-9 score. Levels can range anywhere from low risk of depression, which would warrant the usual standard of care, to major depression with severe consequences [31]. If patients' screening results indicate risk of moderate or severe depression, practitioners will be prompted to consult with a team physician to determine next steps (eg, medication adjustment or psychiatric referral). For patients who endorse suicidal ideation, the ICP will guide practitioners to conduct an additional assessment. Whenever an intervention is warranted, practitioners will be encouraged to discuss other health risk behaviors that influence patient mood, including alcohol use and stress. Figure 1 presents a visual depiction of the study work flow.

The evidence-based resource package, which practitioners will be able to print or email it to patients, will include:

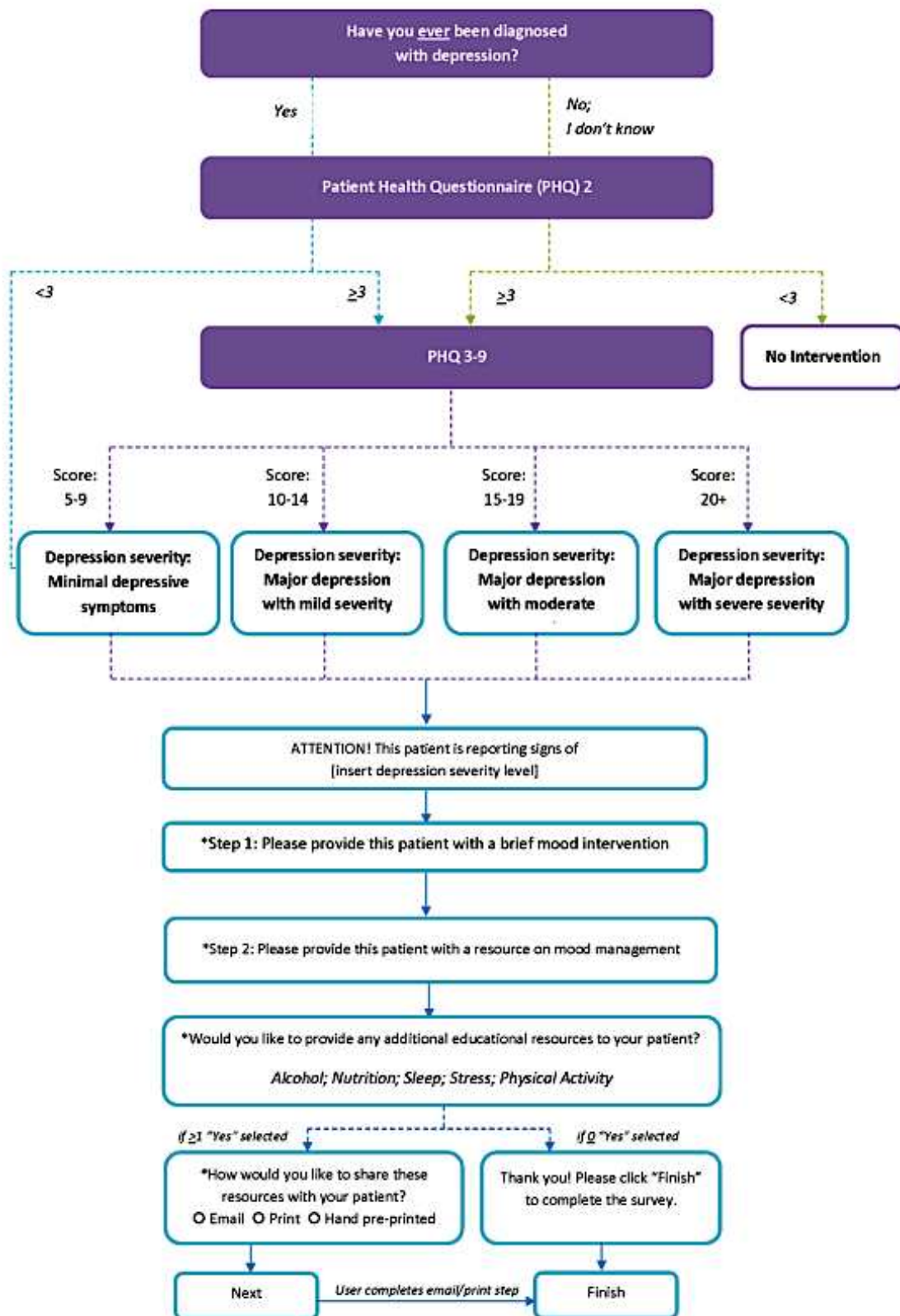
- Relaxation and mindfulness exercises
- Self-monitoring sheets to record each cigarette smoked, the activities they engaged in, and overall mood at the end of each day for 2 weeks
- Problem-solving attitudes and skills-building activities

Outcomes

The primary outcome will be the provision of the mood management intervention to eligible patients upon completion of the STOP smoking cessation program enrollment. This dichotomous outcome will be measured as positive by a response of "Patient accepted the resource" to the practitioner question "Did the patient accept or decline the resource?". In contrast, the outcome will be measured as negative if given a response of "Patient declined the resource" to the practitioner question "Did the patient accept or decline the resource?" or a response of "no" to the practitioner directive "Provide this patient with resources on mood management."

The secondary outcome will be patient smoking abstinence at the 6-month follow-up survey, as measured by a negative response to the seven-day point prevalence question "Have you had a cigarette, even a puff, in the last 7 days?". Self-reporting has been verified as a valid estimate of smoking status [32].

Figure 1. Study workflow diagram.



The tertiary outcome will be a cost-effectiveness analysis (CEA), evaluating the delivery of each intervention from the health care system, and societal perspectives. The CEA will include the costs of developing, maintaining, and running each intervention in addition to costs associated with personnel, training, supplies, and services. The incremental cost-effectiveness ratio (ICER)

will be the primary outcome of the CEA. An additional measure of interest will be the 95% confidence interval for the ICER, which will be estimated using nonparametric bootstrap resampling techniques [33-36]. This method is commonly used when undertaking economic evaluations alongside clinical trials [37,38].

Other outcomes measured in this study will include change in PHQ-9 score between the baseline and 6-month follow-up surveys, the proportion of eligible smokers who report using the materials, smoking cessation outcomes compared to patients without depression, and practitioner improvement in knowledge, attitudes, skills, and satisfaction in addressing depression in smokers.

Covariates

Patient characteristics known to affect quit outcomes include age, gender, socioeconomic status, having a quit date, alcohol and other substance use, other mental health diagnosis and the Heaviness of Smoking Index [39]. Site and patient level covariates will be treated as potential confounders in the statistical analyses.

Sample Size

A sample size of 1224 patients per group (2446 total) was estimated using a method that accounts for intracluster correlation (ICC) within each FHT and uneven cluster sizes [40]. Using past STOP enrollment as a data source, we estimated an ICC of $\rho=.032$, cluster size variation coefficient of 1.24, an average annual enrolment of 24 patients, the proportion of control group patients who are provided the mood management intervention (p_1) to be 0.08, and set $\alpha=.05$ and $\text{power}=.80$. The minimum desired effect size was set at a risk difference=0.06. Based on enrollment in 2016-2017, we estimate the required sample size for the primary outcome will be achieved in less than 12 months.

Statistical Analysis

All analyses will adopt an intention-to-treat principle in which sites and patients will be analyzed in the trial arm to which they are randomized. Cluster specific methods will be used because the practices, rather than patients, will be randomized, and variance in how patients are managed, and in patient quit outcomes, will be partly explained by the practice.

Primary and Secondary Outcomes

The association between the KT intervention and the primary outcome (ie, delivery of mood management interventions) will be analyzed using a generalized estimating equation (GEE) fitted for logistic regression, using a population-averaged method. Stratification variables will be included as covariates. An exchangeable correlation matrix and robust standard errors will be specified. All outcomes are recoded by the STOP portal system and thus a full case analysis will be used.

The association between KT intervention and the secondary outcome (ie, smoking abstinence at 6-month follow-up) will be analyzed using a GEE as described above. All patients are invited to complete the 6-month follow-up survey, but not all do, so missing outcome data are expected. Therefore, we will conduct a single imputation of the best-case scenario (all patients not smoking) and a single imputation of the worst-case scenario (all patients smoking). If the analyses from the two case scenarios imply different conclusions, multiple imputations will be performed accounting for the clustered structure of the data. All study analyses will be performed in Stata 14 [41].

Tertiary Outcomes

In order to conduct a cost-effectiveness analysis, we will estimate an ICER for two outcomes: number of times resources are provided to patients (health provider side) and smoking quit rates (patient side). The ICER will be calculated as the difference in discounted mean costs between intervention groups A and B divided by the difference in the outcome, using the following formula: $\text{ICER}=(C_i-C_c)/(E_i-E_c)$, where C_i is the adjusted annual costs of group B, C_c is the adjusted annual costs of group A, E_i is the effect in group B, and E_c is the effect in group B. One-way deterministic sensitivity analyses will be performed to evaluate the robustness of our results.

Ethical Approval and Trial Status

The study was reviewed by the Research Ethics Board at the Centre for Addiction and Mental Health (approval number: 065-2016). The trial is registered with ClinicalTrials.gov (ID: NCT03130998). At the time of manuscript submission, the readiness survey was administered, but recruitment was not completed.

Results

Recruitment for the primary outcome of this study will be completed in 2018/2019. Results will be reported in 2019/2020.

Discussion

It is well known that the process of integrating research evidence into practice is slow and complex [42]. Even though there have been many strategies evaluated to improve how health care professionals care for their patients, there is still no clear answer as to which is the most effective, and cost-effective, strategy to use [16,17]. Two strategies that are commonly used to promote practice change include (1) tailored and targeted messages that connect relevant research evidence to practice users [43]; and (2) KBs who work one-on-one with decision makers to facilitate evidence-informed decision-making [16].

This clinical trial will address the knowledge gap in the implementation approach associated with the use of email-based prompts versus a KB in mood management interventions for smokers with depression in primary care settings. With at least one life saved from a tobacco-related death for every two smokers who quit [44], the potential patient-level impact will extend well beyond the study duration. Assuming both approaches are equally effective at achieving a modest probability (10%) of practice change and knowing there should be a 12%-20% improvement in the likelihood of quitting smoking due to use of a mood management intervention, we would expect 19 to 32 patients with depression to quit smoking. An additional benefit to patients will be a potential improvement in their depression scores as a result of the specialized care and resources provided by clinicians as part of this study.

In addition, the Web-based portal used by STOP overcomes the issue of compatibility across various electronic medical records in FHTs. Adding a depression intervention to this system could lead to a system-wide implementation of integrated depression care pathways at a relatively low cost, potentially reaching 2.25

million Ontarians registered at these FHTs. Moreover, a technology-based KB model will help reduce travel costs and expand the reach of KBs in the future.

Finally, rapid and efficient implementation in other settings participating in the STOP program, such as Community Health Centres, addiction agencies, Public Health Units, and Nurse Practitioner–Led Clinics, is possible at a relatively low cost. We will also have high quality data on these populations for planning and monitoring the effects of interventions in primary care settings.

Some potential limitations should be acknowledged. As noted earlier, health care practitioners will not be blinded to the

treatment allocation. During this study, a health care practitioner might work in two different clinics, one assigned to group A, and one to group B. In this case, there is the possibility of contamination of knowledge, as the health care practitioner might apply knowledge obtained from the KB advice received while working in a group B clinic to patients in their group A clinic. This possible contamination could decrease the trial effect and lead to a more conservative effect estimate. However, we anticipate that this will be a rare occurrence. In addition, there is a risk that detecting change in the abstinence rates may be underpowered when estimating the ICER for the economic evaluation.

Acknowledgments

The authors would like to acknowledge Anna Ivanova, Melanie Wisener, and Mandavni Rathore for their contributions to the study protocol and components. PS would like to acknowledge the support he receives from the Clinician Scientist Program at the Department of Family and Community Medicine, University of Toronto. This research is supported by the Canadian Institutes for Health Research (Operating Grant: Knowledge to Action grant #147548).

Conflicts of Interest

None declared.

References

1. Hitsman B, Papandonatos G, McChargue D, DeMott A, Herrera M, Spring B, et al. Past major depression and smoking cessation outcome: a systematic review and meta-analysis update. *Addiction* 2013 Feb;108(2):294-306 [FREE Full text] [doi: [10.1111/add.12009](https://doi.org/10.1111/add.12009)] [Medline: [23072580](https://pubmed.ncbi.nlm.nih.gov/23072580/)]
2. Weinberger AH, Pilver CE, Desai RA, Mazure CM, McKee SA. The relationship of major depressive disorder and gender to changes in smoking for current and former smokers: longitudinal evaluation in the US population. *Addiction* 2012 Oct;107(10):1847-1856 [FREE Full text] [doi: [10.1111/j.1360-0443.2012.03889.x](https://doi.org/10.1111/j.1360-0443.2012.03889.x)] [Medline: [22429388](https://pubmed.ncbi.nlm.nih.gov/22429388/)]
3. Blalock JA, Robinson JD, Wetter DW, Schreindorfer LS, Cinciripini PM. Nicotine withdrawal in smokers with current depressive disorders undergoing intensive smoking cessation treatment. *Psychol Addict Behav* 2008 Mar;22(1):122-128. [doi: [10.1037/0893-164X.22.1.122](https://doi.org/10.1037/0893-164X.22.1.122)] [Medline: [18298238](https://pubmed.ncbi.nlm.nih.gov/18298238/)]
4. Kahler CW, Brown RA, Ramsey SE, Niaura R, Abrams DB, Goldstein MG, et al. Negative mood, depressive symptoms, and major depression after smoking cessation treatment in smokers with a history of major depressive disorder. *J Abnorm Psychol* 2002 Nov;111(4):670-675. [Medline: [12428781](https://pubmed.ncbi.nlm.nih.gov/12428781/)]
5. Hall SM, Prochaska JJ. Treatment of smokers with co-occurring disorders: emphasis on integration in mental health and addiction treatment settings. *Annu Rev Clin Psychol* 2009;5:409-431 [FREE Full text] [doi: [10.1146/annurev.clinpsy.032408.153614](https://doi.org/10.1146/annurev.clinpsy.032408.153614)] [Medline: [19327035](https://pubmed.ncbi.nlm.nih.gov/19327035/)]
6. Kalman D, Morissette SB, George TP. Co-morbidity of smoking in patients with psychiatric and substance use disorders. *Am J Addict* 2005;14(2):106-123 [FREE Full text] [doi: [10.1080/10550490590924728](https://doi.org/10.1080/10550490590924728)] [Medline: [16019961](https://pubmed.ncbi.nlm.nih.gov/16019961/)]
7. Lasser K, Boyd J, Woolhandler S, Himmelstein D, McCormick D, Bor D. Smoking and mental illness: A population-based prevalence study. *JAMA* 2000;284(20):A.
8. Bolam B, West R, Gunnell D: Does smoking cessation cause depression and anxiety? Findings from the ATTEMPT cohort. *Nicotine & Tobacco Research : Official Journal of the Society for Research on Nicotine and Tobacco* 2011;13(3):209-214. [doi: [10.1093/ntr/ntq244](https://doi.org/10.1093/ntr/ntq244)]
9. Gierisch J, Bastian L, Calhoun P, McDuffie J, Williams J. Smoking cessation interventions for patients with depression: A systematic review and meta-analysis.. *J Gen Inter Med* 2012;27(3):A. [doi: [10.1007/s11606-011-1915-2](https://doi.org/10.1007/s11606-011-1915-2)]
10. Torres LD, Barrera AZ, Delucchi K, Penilla C, Pérez-Stable EJ, Muñoz RF. Quitting smoking does not increase the risk of major depressive episodes among users of Internet smoking cessation interventions. *Psychol Med* 2010 Mar;40(3):441-449 [FREE Full text] [doi: [10.1017/S0033291709990560](https://doi.org/10.1017/S0033291709990560)] [Medline: [19627638](https://pubmed.ncbi.nlm.nih.gov/19627638/)]
11. Weinberger A, Mazure C, Morlett A, McKee SA. Two decades of smoking cessation treatment research on smokers with depression: 1990-2010. *Nicotine Tob Res* 2013 Jun;15(6):1014-1031 [FREE Full text] [doi: [10.1093/ntr/nts213](https://doi.org/10.1093/ntr/nts213)] [Medline: [23100459](https://pubmed.ncbi.nlm.nih.gov/23100459/)]
12. Prochaska J, Hall S, Tsoh J, Eisendrath S, Rossi J, Redding C, et al. Treating tobacco dependence in clinically depressed smokers: effect of smoking cessation on mental health functioning. *Am J Public Health* 2008 Mar;98(3):446-448. [doi: [10.2105/AJPH.2006.101147](https://doi.org/10.2105/AJPH.2006.101147)] [Medline: [17600251](https://pubmed.ncbi.nlm.nih.gov/17600251/)]

13. Thorsteinsson HS, Gillin JC, Patten CA, Golshan S, Sutton LD, Drummond S, et al. The effects of transdermal nicotine therapy for smoking cessation on depressive symptoms in patients with major depression. *Neuropsychopharmacology* 2001 Apr;24(4):350-358 [FREE Full text] [doi: [10.1016/S0893-133X\(00\)00217-7](https://doi.org/10.1016/S0893-133X(00)00217-7)] [Medline: [11182530](https://pubmed.ncbi.nlm.nih.gov/11182530/)]
14. Tsoh JY, Humfleet GL, Muñoz RF, Reus VI, Hartz DT, Hall SM. Development of major depression after treatment for smoking cessation. *Am J Psychiatry* 2000 Mar;157(3):368-374. [doi: [10.1176/appi.ajp.157.3.368](https://doi.org/10.1176/appi.ajp.157.3.368)] [Medline: [10698811](https://pubmed.ncbi.nlm.nih.gov/10698811/)]
15. van DMR, Willemsen M, Smit F, Cuijpers P. Smoking cessation interventions for smokers with current or past depression. *Cochrane Database Syst Rev* 2013 Aug 21;8(8):CD006102. [doi: [10.1002/14651858.CD006102.pub2](https://doi.org/10.1002/14651858.CD006102.pub2)] [Medline: [23963776](https://pubmed.ncbi.nlm.nih.gov/23963776/)]
16. Dobbins M, Robeson P, Ciliska D, Hanna S, Cameron R, O'Mara L, et al. A description of a knowledge broker role implemented as part of a randomized controlled trial evaluating three knowledge translation strategies. *Implement Sci* 2009 Apr 27;4:23 [FREE Full text] [doi: [10.1186/1748-5908-4-23](https://doi.org/10.1186/1748-5908-4-23)] [Medline: [19397820](https://pubmed.ncbi.nlm.nih.gov/19397820/)]
17. Dobbins M, Hanna S, Ciliska D, Manske S, Cameron S, Mercer S, et al. A randomized controlled trial evaluating the impact of knowledge translation and exchange strategies. *Implementation Sci* 2009 Sep 23;4(1):A. [doi: [10.1186/1748-5908-4-61](https://doi.org/10.1186/1748-5908-4-61)]
18. Grimshaw J, Eccles MP. Is evidence-based implementation of evidence-based care possible? *Med J Aust* 2004 Mar 15;180(6 Suppl):S50-S51. [Medline: [15012580](https://pubmed.ncbi.nlm.nih.gov/15012580/)]
19. Grof R, Grimshaw J. From best evidence to best practice: effective implementation of change in patients' care. *The Lancet* 2003 Oct;362(9391):1225-1230. [doi: [10.1016/S0140-6736\(03\)14546-1](https://doi.org/10.1016/S0140-6736(03)14546-1)]
20. Lavis J, Davies H, Oxman A, Denis J, Golden-Biddle K, Ferlie E. Towards systematic reviews that inform health care management and policy-making. *J Health Serv Res Policy* 2005 Jul;10 Suppl 1:35-48. [doi: [10.1258/1355819054308549](https://doi.org/10.1258/1355819054308549)] [Medline: [16053582](https://pubmed.ncbi.nlm.nih.gov/16053582/)]
21. Government of Canada. Family Health Teams. URL:<http://www.health.gov.on.ca/en/pro/programs/fht/> [accessed 2018-04-18] [WebCite Cache ID 6ymGiU3yS]
22. Drzensky F, Egold N, van Dick R. Ready for a Change? A Longitudinal Study of Antecedents, Consequences and Contingencies of Readiness for Change. *Journal of Change Management* 2012 Mar;12(1):95-111. [doi: [10.1080/14697017.2011.652377](https://doi.org/10.1080/14697017.2011.652377)]
23. Blase K, Kiser L, Van Dyke M. *The Hexagon Tool: Exploring Context*. Chapel Hill, NC: National Implementation Research Network; 2013.
24. Scaccia JP, Cook BS, Lamont A, Wandersman A, Castellow J, Katz J, et al. A practical implementation science heuristic for organizational readiness: R=MC. *J Community Psychol* 2015 Apr;43(4):484-501 [FREE Full text] [doi: [10.1002/jcop.21698](https://doi.org/10.1002/jcop.21698)] [Medline: [26668443](https://pubmed.ncbi.nlm.nih.gov/26668443/)]
25. Herie M, Connolly H, Voci S, Dragonetti R, Selby P. Changing practitioner behavior and building capacity in tobacco cessation treatment: the TEACH project. *Patient Educ Couns* 2012 Jan;86(1):49-56 [FREE Full text] [doi: [10.1016/j.pec.2011.04.018](https://doi.org/10.1016/j.pec.2011.04.018)] [Medline: [21612884](https://pubmed.ncbi.nlm.nih.gov/21612884/)]
26. Nicotine Dependence Clinic. *Training Enhancement in Applied Cessation Counselling and Health*. TEACH 2011.
27. Spitzer RL, Kroenke K, Williams JB. Validation and utility of a self-report version of PRIME-MD: the PHQ primary care study. *Primary Care Evaluation of Mental Disorders. Patient Health Questionnaire*. *JAMA* 1999 Nov 10;282(18):1737-1744. [Medline: [10568646](https://pubmed.ncbi.nlm.nih.gov/10568646/)]
28. Spitzer RL, Williams JB, Kroenke K, Hornyak R, McMurray J. Validity and utility of the PRIME-MD patient health questionnaire in assessment of 3000 obstetric-gynecologic patients: the PRIME-MD Patient Health Questionnaire Obstetrics-Gynecology Study. *Am J Obstet Gynecol* 2000 Sep;183(3):759-769. [Medline: [10992206](https://pubmed.ncbi.nlm.nih.gov/10992206/)]
29. Muñoz RF, Barrera AZ, Delucchi K, Penilla C, Torres LD, Pérez-Stable EJ. International Spanish/English Internet smoking cessation trial yields 20% abstinence rates at 1 year. *Nicotine Tob Res* 2009 Sep 10;11(9):1025-1034 [FREE Full text] [doi: [10.1093/ntr/ntp090](https://doi.org/10.1093/ntr/ntp090)] [Medline: [19640833](https://pubmed.ncbi.nlm.nih.gov/19640833/)]
30. Muñoz RF, Lenert LL, Delucchi K, Stoddard J, Perez JE, Penilla C, et al. Toward evidence-based Internet interventions: A Spanish/English Web site for international smoking cessation trials. *Nicotine Tob Res* 2006 Feb;8(1):77-87. [doi: [10.1080/14622200500431940](https://doi.org/10.1080/14622200500431940)] [Medline: [16497602](https://pubmed.ncbi.nlm.nih.gov/16497602/)]
31. Patten SB. Updated CANMAT Guidelines for Treatment of Major Depressive Disorder. *Can J Psychiatry* 2016 Sep;61(9):504-505 [FREE Full text] [doi: [10.1177/0706743716660034](https://doi.org/10.1177/0706743716660034)] [Medline: [27534886](https://pubmed.ncbi.nlm.nih.gov/27534886/)]
32. Wong SL, Shields M, Leatherdale S, Malaisson E, Hammond D. Assessment of validity of self-reported smoking status. *Health Rep* 2012 Mar;23(1):47-53 [FREE Full text] [Medline: [22590805](https://pubmed.ncbi.nlm.nih.gov/22590805/)]
33. Drummond MF, Sculpher MJ, Torrance G, O'Brien B, Stoddart G. *Methods for the economic evaluation of health care programmes*. Oxford: Oxford University Press; 2005.
34. Glick HA, Doshi JA, Sonnad SS, Polsky D. *Economic Evaluation in Clinical Trials*. Oxford: Oxford University Press; 2007.
35. Campbell MK, Torgerson DJ. Bootstrapping: estimating confidence intervals for cost-effectiveness ratios. *QJM:monthly journal of the Association of Physicians* 1999;92(3):177-182. [doi: [10.1093/qjmed/92.3.177](https://doi.org/10.1093/qjmed/92.3.177)]
36. Bachmann MO, Fairall L, Clark A, Mugford M. Methods for analyzing cost effectiveness data from cluster randomized trials. *Cost Eff Resour Alloc* 2007 Sep 06;5:12 [FREE Full text] [doi: [10.1186/1478-7547-5-12](https://doi.org/10.1186/1478-7547-5-12)] [Medline: [17822546](https://pubmed.ncbi.nlm.nih.gov/17822546/)]

37. Salize HJ, Merkel S, Reinhard I, Twardella D, Mann K, Brenner H. Cost-effective primary care-based strategies to improve smoking cessation: more value for money. *Arch Intern Med* 2009 Feb 09;169(3):230-5; discussion 235. [doi: [10.1001/archinternmed.2008.556](https://doi.org/10.1001/archinternmed.2008.556)] [Medline: [19204212](https://pubmed.ncbi.nlm.nih.gov/19204212/)]
38. Smit ES, Evers SMAA, de VH, Hoving C. Cost-effectiveness and cost-utility of Internet-based computer tailoring for smoking cessation. *J Med Internet Res* 2013 Mar 14;15(3):e57 [FREE Full text] [doi: [10.2196/jmir.2059](https://doi.org/10.2196/jmir.2059)] [Medline: [23491820](https://pubmed.ncbi.nlm.nih.gov/23491820/)]
39. Borland R, Yong H, O'Connor R, Hyland A, Thompson M. The reliability and predictive validity of the Heaviness of Smoking Index and its two components: Findings from the International Tobacco Control Four Country study. *Nicotine & Tobacco Research* 2010 Sep 30;12(Supplement 1):S45-S50. [doi: [10.1093/ntr/ntq038](https://doi.org/10.1093/ntr/ntq038)] [Medline: [19204212](https://pubmed.ncbi.nlm.nih.gov/19204212/)]
40. Rutterford C, Copas A, Eldridge S. Methods for sample size determination in cluster randomized trials. *Int J Epidemiol* 2015 Jun 14;44(3):1051-1067 [FREE Full text] [doi: [10.1093/ije/dyv113](https://doi.org/10.1093/ije/dyv113)] [Medline: [26174515](https://pubmed.ncbi.nlm.nih.gov/26174515/)]
41. StataCorp. Stata Statistical Software: Release 12. College Station, TX: StataCorp; 2011. URL: <https://www.stata.com/support/faqs/resources/citing-software-documentation-faqs/> [WebCite Cache ID 6ym5ZNdfV]
42. Haynes B, Haines A. Barriers and bridges to evidence based clinical practice. *BMJ* 1998 Jul 25;317(7153):273-276 [FREE Full text] [Medline: [9677226](https://pubmed.ncbi.nlm.nih.gov/9677226/)]
43. Kreuter MW, Wray RJ. Tailored and targeted health communication: strategies for enhancing information relevance. *Am J Health Behav* 2003;27 Suppl 3:S227-S232. [Medline: [14672383](https://pubmed.ncbi.nlm.nih.gov/14672383/)]
44. West R. The clinical significance of “small” effects of smoking cessation treatments. *Addiction* 2007 Apr 25;102(4):506-509 [FREE Full text] [doi: [10.1111/j.1360-0443.2007.01750.x](https://doi.org/10.1111/j.1360-0443.2007.01750.x)] [Medline: [17362283](https://pubmed.ncbi.nlm.nih.gov/17362283/)]
45. Kreuter MW, Wray RJ. Tailored and targeted health communication: strategies for enhancing information relevance. *Am J Health Behav* 2003;27 Suppl 3:S227-S232. [Medline: [14672383](https://pubmed.ncbi.nlm.nih.gov/14672383/)]
46. West RTC/EO/OSCT. The clinical significance of “small” effects of smoking cessation treatments. *Addiction* 2007 Apr;102(4):506-509. [doi: [10.1111/j.1360-0443.2007.01750.x](https://doi.org/10.1111/j.1360-0443.2007.01750.x)] [Medline: [17362283](https://pubmed.ncbi.nlm.nih.gov/17362283/)]

Abbreviations

- CEA:** cost-effectiveness analysis
- FHT:** Family Health Team
- GEE:** generalized estimating equation
- ICC:** intracluster correlation
- ICER:** incremental cost-effectiveness ratio
- ICP:** integrated care pathway
- KB:** knowledge broker
- KT:** knowledge translation
- OR:** odds ratio
- PHQ-9:** Patient Health Questionnaire
- STOP:** Smoking Treatment for Ontario Patients

Edited by G Eysenbach; submitted 22.12.17; peer-reviewed by M Hassandra, G Papandonatos; comments to author 14.02.18; revised version received 23.02.18; accepted 23.02.18; published 27.04.18

Please cite as:

Minian N, Noormohamed A, Baliunas D, Zawertailo L, Mulder C, Ravindran A, de Oliveira C, Selby P
Tailored Versus Generic Knowledge Brokering to Integrate Mood Management Into Smoking Cessation Interventions in Primary Care Settings: Protocol for a Cluster Randomized Controlled Trial
JMIR Res Protoc 2018;7(4):e111
URL: <http://www.researchprotocols.org/2018/4/e111/>
doi: [10.2196/resprot.9715](https://doi.org/10.2196/resprot.9715)
PMID: [29703714](https://pubmed.ncbi.nlm.nih.gov/29703714/)

©Nadia Minian, Aliya Noormohamed, Dolly Baliunas, Laurie Zawertailo, Carol Mulder, Arun Ravindran, Claire de Oliveira, Peter Selby. Originally published in *JMIR Research Protocols* (<http://www.researchprotocols.org/>), 27.04.2018. This is an open-access article distributed under the terms of the Creative Commons Attribution License (<https://creativecommons.org/licenses/by/4.0/>), which permits unrestricted use, distribution, and reproduction in any medium, provided the original work, first published in *JMIR Research Protocols*, is properly cited. The complete bibliographic information, a link to the original publication on <http://www.researchprotocols.org/>, as well as this copyright and license information must be included.