

University of Nebraska - Lincoln

DigitalCommons@University of Nebraska - Lincoln

Nebraska Cooperative Fish & Wildlife Research Unit -- Staff Publications Nebraska Cooperative Fish & Wildlife Research Unit

9-25-2019

Mortality, perception, and scale: Understanding how predation shapes space use in a wild prey population

Lindsey N. Messinger

Erica F. Stuber

Christopher J. Chizinski

Joseph J. Fontaine

Follow this and additional works at: <https://digitalcommons.unl.edu/ncfwrustaff>



Part of the [Aquaculture and Fisheries Commons](#), [Environmental Indicators and Impact Assessment Commons](#), [Environmental Monitoring Commons](#), [Natural Resource Economics Commons](#), [Natural Resources and Conservation Commons](#), and the [Water Resource Management Commons](#)

This Article is brought to you for free and open access by the Nebraska Cooperative Fish & Wildlife Research Unit at DigitalCommons@University of Nebraska - Lincoln. It has been accepted for inclusion in Nebraska Cooperative Fish & Wildlife Research Unit -- Staff Publications by an authorized administrator of DigitalCommons@University of Nebraska - Lincoln.

RESEARCH ARTICLE

Mortality, perception, and scale: Understanding how predation shapes space use in a wild prey population

Lindsey N. Messinger¹✉*, Erica F. Stuber^{1‡}, Christopher J. Chizinski^{2‡}, Joseph J. Fontaine¹✉

1 Nebraska Cooperative Fish & Wildlife Research Unit, University of Nebraska–Lincoln, Lincoln, Nebraska, United States of America, **2** School of Natural Resources, University of Nebraska–Lincoln, Lincoln, Nebraska, United States of America

✉ These authors contributed equally to this work.

✉ Current address: Minnesota Department of Natural Resources, Farmland Wildlife Populations and Research, Madelia, Minnesota, United States of America.

‡ These authors also contributed equally to this work.

* lindsey.messinger@state.mn.us



OPEN ACCESS

Citation: Messinger LN, Stuber EF, Chizinski CJ, Fontaine JJ (2019) Mortality, perception, and scale: Understanding how predation shapes space use in a wild prey population. PLoS ONE 14(9): e0222272. <https://doi.org/10.1371/journal.pone.0222272>

Editor: W. David Walter, US Geological Survey, UNITED STATES

Received: April 17, 2018

Accepted: July 22, 2019

Published: September 25, 2019

Copyright: © 2019 Messinger et al. This is an open access article distributed under the terms of the [Creative Commons Attribution License](https://creativecommons.org/licenses/by/4.0/), which permits unrestricted use, distribution, and reproduction in any medium, provided the original author and source are credited.

Data Availability Statement: All data files and source code are available from the dryad database DOI: <https://doi.org/10.5061/dryad.8234sk4>.

Funding: Funding for this project was provided by Federal Aid in Wildlife Restoration Projects W-98-R administered by the Nebraska Game and Parks Commission. Any use of trade, firm, or product names is for descriptive purposes only and does not imply endorsement by the U.S. Government. The Nebraska Cooperative Fish and Wildlife Research Unit is supported by a cooperative

Abstract

Attempts to assess behavioral responses of prey to predation risk are often confounded by depredation of prey. Moreover, the scale at which the response of prey is assessed has important implications for discovering how predation risk alters prey behavior. Herein, we assessed space use of wild Ring-necked Pheasants (*Phasianus colchicus*) in response to spatial and temporal variation in recreational hunting. We radio-marked pheasants and monitored space use at two spatial scales: short-term seasonal home range, and nightly resting locations. Additionally, we considered temporal variation in predation risk by monitoring space use prior to and during the pheasant hunting season. Although we found no change in nightly resting location, pheasants subjected to predation risk expanded their home range and shifted home range location even when invulnerable to predation. Home range formation was plastic, with home ranges expanding and contracting as risk fluctuated before and during the hunting season. Depredation reduced the measured response within the population, obscuring the potential importance of perceived predation risk in shaping prey communities, particularly when not measured at the appropriate scale. By assessing space use of a wild prey population at multiple scales, considering spatial and temporal variation in predation risk, we show that not only does predation risk affect space use, but that the effects at the population level may be challenging to assess when not measured at the appropriate ecological scale because of the direct effects of differential mortality on the same behaviors.

agreement among the U.S. Geological Survey, the Nebraska Game and Parks Commission, the University of Nebraska-Lincoln, the U.S. Fish and Wildlife Service, and the Wildlife Management Institute. CJC was supported by Hatch funds through the Agricultural Research Division at the University of Nebraska-Lincoln.

Competing interests: The authors have declared that no competing interests exist.

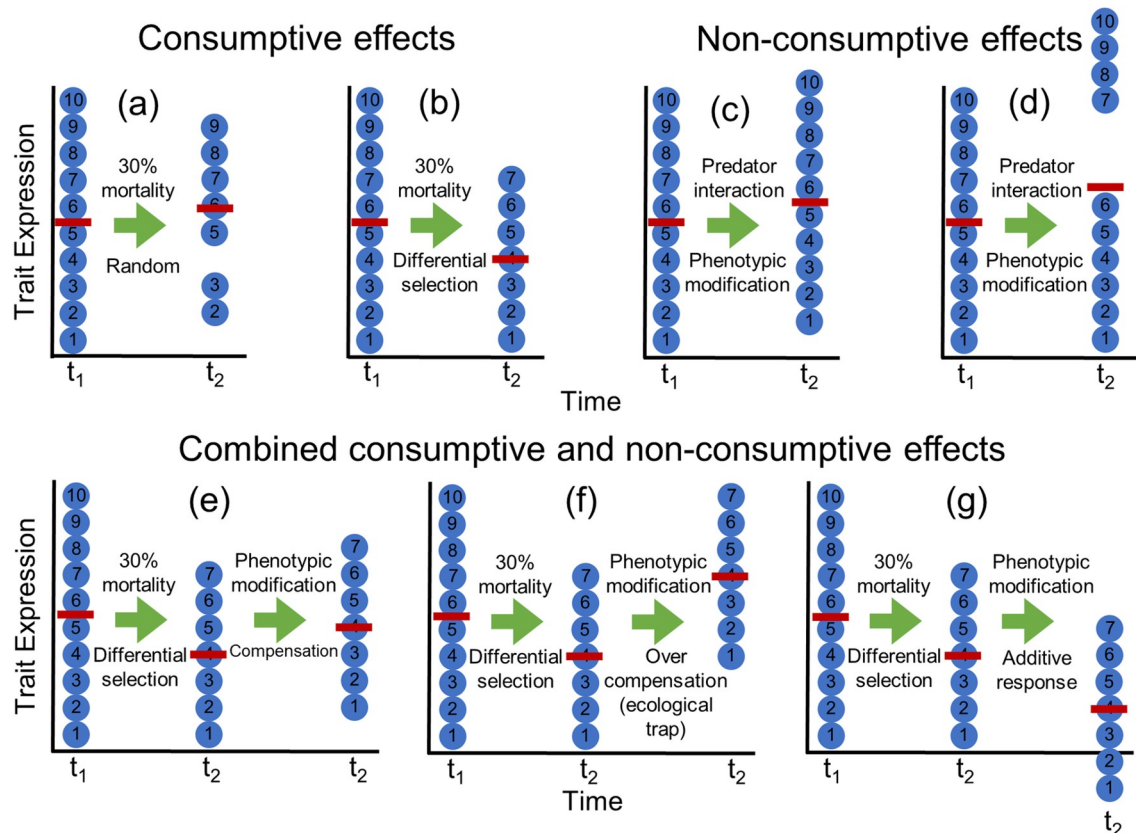
Introduction

Space use has profound implications for individuals, populations and communities [1–5] with variation in resource availability, predation, competition, and climate all influencing how individuals select and use appropriate habitats [4,6–13], and the scale(s) at which responses are manifested [11–13]. Predation risk (i.e., the probability of being killed by a predator as a function of predator encounter rate and time spent vulnerable to predator encounter [14]), for example, alters space use [15–17] such that individuals are found disproportionately in areas with limited exposure to predators (reviewed by [14,18]). Although predation risk is often considered either spatially (risky places hypothesis, i.e., [19,20]) or temporally explicit (risky times hypothesis, [14,18]), prey continually assess and respond to predation risk (e.g., risk allocation hypothesis, [21]), making understanding how predators shape the distribution of prey communities dependent on understanding both spatial and temporal variation in risk [22–25].

Understanding how predators influence where prey are found is further complicated by an individuals' perception of predation risk. An emerging body of evidence suggests that the perception of predation risk alters space use, time allocation, species distribution, population growth, and species interactions [14,18,26–32]. Moreover, theory, as well as empirical evidence, illustrates the complicated nature of optimizing trade-offs between competing activities (e.g., foraging, predator avoidance, reproduction, etc.) [14,33,34], and the energetic and fitness implications assumed by individuals that ultimately shape populations [14,18,31,35,36]. Unfortunately, despite the potential importance of perceived predation risk in shaping prey behavior, the evolutionary and ecological scale of interactions between predators and prey, and the complicated nature of such interactions, make it difficult to determine to what extent selection via differential mortality at the population level, versus behavioral modification at the individual level shape observed patterns of prey space use [37]. Do we fail to find individuals using high-risk environments because they have been depredated or because they are expressing risk adverse behaviors (Fig 1)?

Separating the effects of depredation from perceived predation risk is difficult in wild populations, as anti-predator responses are under continual natural selection. Most studies that have isolated the effects of perceived predation risk have done so in laboratory settings by experimentally modifying predators so they are unable to consume prey [30,38], or in the wild by presenting prey with predator cues (e.g., chemical, auditory) in the absence of the predators themselves [18,31,39]. Though such investigations provide insight on the relative effects of depredation and perceived predation risk, they neglect important features of predator-prey dynamics such as feedback from predator-experienced conspecifics that may enhance anti-predator responses even in naïve prey [40]. In the wild, prey receive cues about the presence of predators (e.g., chemical, visual, auditory, olfactory) [41,42], but experiments have necessarily focused on a subset of stimuli, leaving uncertainty regarding how prey respond when presented with a full range of cues. Furthering our understanding of the relative importance of perceived predation risk in shaping prey behavior involves isolating the consumptive effects of predation from the non-consumptive effects of perceived predation risk, and measuring prey behavior at multiple ecological scales under conditions that incorporate spatial and temporal variation in predation risk.

To isolate the effects of perceived predation risk in a wild prey population, we assessed space use of wild Ring-necked Pheasants (*Phasianus colchicus*) in response to spatial and temporal variation in recreational hunting activity by humans. Humans elicit similar anti-predator responses as those prompted by natural predators to which pheasants are also exposed [27,43]. Importantly, regulations regarding hunting of wild pheasant populations limit hunters to harvesting (i.e., depredating) males [44]. As males and females cohabitate, female pheasants



It is often difficult to determine whether observed trait expression in a prey population is due to differential selection via consumptive effects (mortality) at the population level or phenotypic modification driven by non-consumptive effects (fear) at the individual level. Consider a prey population that exhibits heterogeneous expression of a trait (individuals numbered 1-10 in figures a-e above). The prey population interacts with predators between time 1 (t_1) and time 2 (t_2). The red bar represents the mean trait expression of the population.

Under consumptive predation that occurs randomly, there is no significant change in mean trait expression of the population from t_1 to t_2 (a). Under differential selection where specific trait expression increases an individual's probability of mortality, mean trait expression for the population shifts away from the trait expression with a higher probability of mortality due to the non-random removal of those individuals from the population (b). The non-consumptive effects of predation can also shift mean trait expression of a population without removing individuals. One example is a shift in trait expression by all individuals in the population, each moving in the same direction and at the same magnitude (c). Alternatively, trait expression may dictate the magnitude of phenotypic shifts in expression with some individuals responding more than others at t_2 based on trait expression at t_1 (d).

Although consumptive and non-consumptive predation effects on trait expression can be considered independently, in most systems the effects co-occur (e-g). The simultaneous occurrence of consumptive and non-consumptive effects on wild populations creates challenges for interpreting observed shifts in trait expression at the population level. For example, consumptive and non-consumptive effects may cause trait expression to shift in opposite directions with differential selection shifting the population mean in one direction and phenotypic modification at the individual level shifting the population mean in the opposite direction through compensation, masking consumptive and non-consumptive effects on trait expression at the population level (e). Alternatively, shifts in trait expression may be observed even when consumptive and non-consumptive effects shift in opposite directions, where individuals increase expression of a given trait even though it is selected against (i.e., an ecological trap) (f). Finally, shifts in trait expression in response to consumptive and non-consumptive predation risk may be complimentary, with differential selection at the population level and phenotypic modification at the individual level shifting the mean trait expression of the population in a similar direction with an additive response to predation (g).

Fig 1. Consumptive and non-consumptive predation effects on trait expression.

<https://doi.org/10.1371/journal.pone.0222272.g001>

receive feedback and reinforcement for the expression of anti-predator responses in the presence of humans. While males experience true predation risk, females only experience perceived predation risk from human hunters, allowing us to disentangle the effects of perceived predation risk from those of depredation on population level behavioral trait expression.

Our objective was to evaluate the relative role of perceived predation risk in shaping space use of pheasants at two spatial scales: seasonal home range and nightly resting locations, hereafter referred to as roost sites. Using a before-after-control-impact experimental design, we were able to assess the effects of spatial (between high and low risk sites) and temporal (within and between sites before and throughout the hunting season) variation in predation risk on space use. Moreover, we were able to evaluate the effects of perceived predation risk and depredation on the behaviors expressed within our study populations by independently examining the responses of vulnerable (i.e., male on high risk sites) and invulnerable (i.e., all females) populations to spatial and temporal variation in predation risk. We predicted that if perceived predation risk affected space use, then populations exposed to hunters, independent of actual predation risk (i.e., both males and females on high risk sites), would show changes in space use following the onset of the hunting season. Moreover, assuming that the assessment of predation risk and the corresponding behavioral response is continuous, space use should reflect seasonal declines in hunting pressure that typify pheasant hunting [45,46], such that space use of populations on high risk sites would more closely resemble those on low risk sites as the season progressed. We further predicted that depredation could act either independently or interact with how individuals perceive predation risk to affect space use within our study populations. Specifically, if depredation, not perceived predation risk, affects our measure of space use, then only populations experiencing depredation (i.e., males on high risk sites) would demonstrate changes in space use following the onset of the hunting season. However, if depredation within the population acts in concert with individual behavioral responses to the perception of predation risk, then we could see two alternative outcomes. If hunters differentially depredate individuals that fail to respond to predation risk by altering space use, then changes in space use will be more extreme for populations experiencing depredation (i.e., males on high risk sites). If, however, hunters depredate individuals that would have otherwise altered space use, then changes in space use may be less extreme for populations experiencing depredation (i.e., males on high risk sites) if the perception of predation risk is in part shaped by interactions with predators. Although our predictions broadly encompass space use at any scale, it is reasonable to expect that perceived predation risk may shape prey behavior differently at different scales; therefore, considering space use at multiple scales allows us to evaluate a wider range of potential effects [11,47–49].

Methods

Study species

The Ring-necked Pheasant is an introduced, ground-dwelling gallinaceous bird inhabiting grassland and agricultural landscapes throughout the central Great Plains of North America. Pheasants range in mass from 500–1300 grams, stand 50–70 cm tall, and are sexually dimorphic, with males notably larger and distinctly colored [50]. Pheasants are hunted in the fall and winter throughout North America. Hunters pursue pheasants on foot, usually accompanied by dogs, and birds are primarily harvested with shotguns as they flush from vegetation, with hunters permitted to harvest males only [44].

Study system

We conducted our study from September–January of 2012–2014, starting before the 98-day pheasant hunting season, which opens the last weekend in October and ends 31 January [44]. Our study took place on ten sites in Hitchcock and Hayes counties in Southwestern Nebraska, USA that ranged in size from 29 to 155 hectares. All sites were enrolled in the Conservation Reserve Program and were dominated by warm and cool season grasses with interspersed forbaceous vegetation and minimal woody components. Sites were surrounded by a matrix of agricultural lands (predominately dry-land winter wheat and milo, and irrigated corn and soybeans), rangeland pastures, and other grasslands enrolled in the Conservation Reserve Program. Five sites were open to public hunting and received numerous hunter visits, exposing wildlife inhabitants to relatively high predation risk ('high-risk'), whereas hunting access to the remaining five sites was restricted ('low-risk'). On all sites, regulations prohibited killing of female pheasants and legal daily shooting hours were 30 minutes before sunrise to sunset [44]. Natural predators of adult pheasants included mammalian predators such as coyote (*Canis latrans*), red fox (*Vulpes vulpes*), and bobcat (*Lynx rufus*), and various raptor species including red-tailed hawk (*Buteo jamaicensis*), great-horned owl (*Bubo virginianus*), prairie falcon (*Falco mexicanus*), and Swainson's hawk (*Buteo swainsoni*). All predators of adult pheasants are highly mobile and widespread, and predator communities and natural predation rates were not expected to differ between sites (e.g., [51]).

Assessment of predation risk

We used time-lapse photography to document hunting activity at each site and quantify relative predation risk from hunters. We placed cameras (Moultrie model M880, Bushnell Trophy Cam) at fixed, elevated locations in an arrangement and manner that maximized visualization of the site and minimized overlap in the field of view of each camera. The number of cameras at each site (minimum = 2, maximum = 4, mean = 2.8) varied based on the size of the site, suitable mounting locations, and topography. We mounted cameras at a height, and the field of view was such, that individual hunters were visible but not personally identifiable. We programmed cameras to take one still photograph every five minutes during legal hunting hours each day for the duration of the 98-day pheasant hunting season. We visually inspected each photograph for hunter abundance and recorded the date, time, and site. We summarized predation risk by calculating the mean number of hunters per photo, per site, per day. To account for seasonal reductions in hunting pressure [45,46], and the subsequent consequences for how prey perceive and respond to predation risk, we classified each day of the hunting season as either "early" (27 October–23 November) or "late" (24 November–15 December). To explain variation in predation risk during the study period, we formulated a mixed effects model (run in Program R; version 3.1.3, R Development Core Team, 2014 using package "lme4" [52]) following a Gaussian error distribution in a Bayesian framework. Our dependent variable was mean hunters per photo, per site, per day. Risk group (low vs. high), and season (early, late), and their interactions were included as fixed effects and study site was included as a random effect. We simulated draws from the joint posterior distributions of the model parameters for all mixed effects models using non-informative priors with the "sim" function (run in Program R using package "arm"[53]). We extracted the mean and 95% credible intervals (CI) [54] for each parameter based on 5000 simulations. We visually inspected residual plots to assess model fit and deemed them satisfactory.

Pheasant capture

We captured pheasants via nightlighting [55] from 12–28 September 2012 and 10 September–13 October 2013, and fitted each bird with a 22- or 26-gram necklace style VHF radio transmitter

equipped with a mortality sensor (Model #A4070, Advanced Telemetry Systems, Inc., Isanti, Minnesota, USA). Radio collars were placed only when collar mass was less than 5% of an individual's body mass [56] and a necklace style was selected to minimize behavioral or physical impairment as weight fluctuations on the neck is natural because of food storage in the crop. Basic morphometric measures (mass, tarsus length) were taken, and age (hatch year or after hatch year) and sex were determined by visually inspecting feather color and wear, and spur length and color of males. Individuals were marked with a uniquely numbered aluminum leg band for subsequent identification (via nightlighting or hunter harvest) in the event of radio collar loss or malfunction. All birds were processed and immediately released where captured. Methods were reviewed and approved by the Nebraska Game and Parks Commission (Scientific and Educational Permit 408), and the University of Nebraska-Lincoln Institutional Animal Care and Use Committee (Protocol 1060) and Institutional Review Board (20120912892EX).

Radio triangulation

We recorded movements of individual radio-tagged pheasants 3–7 days per week from 1 October—15 December via radio telemetry using truck-mounted, null-peak antenna systems [57]. To reflect the full range of habitat needs, we located individuals during times assumed to reflect an individual's unique daily requirements including foraging (1-hr before sunrise to 2-hr after sunrise and 2-hr before sunset to 1-hr after sunset), loafing (2-hr after sunrise to 2-hr before sunset), and roosting (1-hr after sunset to 1-hr before sunrise), with only one location type represented in a single tracking event. To obtain each location, we took a minimum of three bearings within a 20-minute period to minimize biases and error associated with bird movement [56]. Estimated locations as well as associated error ellipses (calculated based on maximum likelihood estimations; [58]) were processed in the field using on-board computers and Location of a Signal (LOAS) software (Ecological Software Solutions, LLC, Hegymagas, Hungary, Version 4.0). Bearing sets with error ellipses $>2000\text{ m}^2$ (i.e., $>25\text{m}$ radius) were discarded or additional bearings were taken until error ellipse size was $<2000\text{ m}^2$ for daytime locations (foraging and loafing) and $<1000\text{ m}^2$ for roost locations. Higher precision for roost sites was desired as roost sites were re-located in the field for vegetative assessment.

Any individual emitting a mortality signal during radio triangulation activities was re-located on the ground using hand-held radio location equipment as weather conditions and time allowed. Date of mortality event, and cause of death or radio collar loss were recorded and radio collars were recovered.

Space use

Home range assessment. A home range is the spatial representation of the area an individual occupies while carrying out activities needed to survive and reproduce [47]. Home range formation is fluid, as individuals continuously weigh and assess changes in sources of selection over space and time and immediately adjust space use in response to current conditions. We assessed home ranges using two different methods. First, we used a traditional method [59,60] by defining and comparing home ranges over three distinct periods. Radiolocations recorded before the onset of hunting season (1 October—25 October, hereafter “pre-hunting season”) were separated from radiolocations recorded during the hunting season and serve as the before-impact control within each risk group. Assuming pheasants continually assess and respond to predation risk, it is reasonable to expect pheasant behavior to change as hunting pressure changes. Therefore, we divided radio telemetry locations recorded during the hunting season into “early” and “late” hunting seasons to reflect the traditional temporal decline in hunting pressure [45,46]. Behavioral responses during the early-hunting season

represent an immediate reaction to elevated predation risk, whereas evaluating late-hunting season responses allowed us to determine if immediate behavioral responses continue given a reduction in predation risk as the hunting season progresses. We used radiolocations to estimate 95% and 50% home ranges for each individual during each season (pre, early, and late). Home ranges were estimated using fixed kernel utilization distributions [61,62] (run in Program R using package “adehabitatHR” [63]) with smoothing parameter h_{ref} . Kernel utilization distributions take into consideration the density of re-locations giving a more accurate assessment of the relative importance of various portions of an individual’s home range, and are less sensitive to outliers, sampling regimes, and detection bias compared to traditional estimators such as minimum convex polygon [64,65]. Individuals with fewer than 10 radiolocations during a given season were excluded from analysis for that season to reduce errors in home range estimation associated with small sample sizes (radiolocations per home range: mean = 17.6, min = 10, max = 25).

There is much debate surrounding issues of autocorrelation, sample sizes, and analysis frameworks for kernel utilization distribution estimation [56,66,67], but it is increasingly apparent that approaches that consider and maintain biologically relevant sampling procedures when exploring animal movement [68,69] are superior to traditional statistically driven frameworks [67,68,70]. Recognizing kernel home range estimations are subject to error, especially with small sample sizes as those presented here [71], our goal was not to estimate and report the ‘true’ size of home ranges, but to measure relative changes in home range size or location between risk groups and seasons. It is reasonable to expect that any error associated with home range estimation due to small sample sizes would not differ between risk groups or season. Assuming consistent error, our limited sample sizes make our assessment conservative, as the increase in error within risk group or season makes detecting differences among groups or seasons more difficult.

To explain variation in home range size in response to predation risk, we formulated a mixed effects model for each sex as described for hunting pressure. Our dependent variable was the size of the 95% home range (hectares), which we log transformed to meet the assumptions of a normal distribution. Risk group (low, high), season (pre, early, late), and their interactions, as well as year were included as fixed effects, and study site and individual were included as random effects. We used a similar model structure to explain variation in home range location in response to predation risk, replacing Euclidean distance (meters) between the pre-season 50% home range center and the early and late-season 50% home range centers as the dependent variable, which we log transformed to meet the assumptions of a normal distribution. Season included only two levels (pre-to-early, and pre-to-late).

Although dividing location data into distinct periods is the traditional approach (pre- vs. early- vs. late-hunting season), important information may be lost as animal movements and hunting pressure are inherently continuous variables. Given the variability in hunting pressure from day-to-day, both within and between sites, and the behavioral response of prey, we developed an analysis that allowed us to treat predation risk and home range size as continuous variables. Using a “moving window” approach, we estimated 95% and 50% home ranges from the same location data by constructing individual home range estimates based on a five-location window, meaning each home range was constructed using 11 re-location events (an individual’s location on a given day plus the five previous and five future re-locations). Windows were “moved” one re-location event (typically 1–2 days) to produce a new home range for the individual, always maintaining 11 re-location events. Because not all individuals were relocated on the same day, our moving window approach resulted in home ranges that varied in time span (days) over which the 11 relocation events took place (minimum = 8, maximum = 38, mean = 13.7). To account for variation in the time represented by each home range we

included window length in all models involving the moving window approach. We estimated home ranges using fixed kernel utilization distributions as described earlier. For each 95% home range, we determined the study site it intersected and assigned a measure of hunting pressure for the associated date range by calculating the mean hunters per photo per site per day on that site. In cases where home ranges did not intersect any of our study sites (individuals were ‘offsite’), we assigned predation risk as the mean hunters per photo, per site, per day on our low-risk sites for the relevant date range. Assigning predation risk for offsite home ranges based on risk measured at low-risk sites represents a conservative estimate, as most land was not publically accessible for hunting, but hunting was still possible. To explain variation in home range size in response to predation risk, we formulated a mixed effects model similar to those described above. Our dependent variable was home range size (hectares) log transformed to meet the assumptions of a normal distribution. Sex, date (median date of the home range), window length (days between first and last relocation events), and hunting pressure (mean hunters per photo per site per day) were added as independent variables and study site and individual were included as random effects. To explain variation in home range location related to hunting pressure using our continuous, moving window approach, we evaluated the Euclidean distance between successive 50% home range centers. We attributed each distance moved with the hunting pressure of the previous home range, such that the value represented the predation risk an individual was moving from. To explain variation in home range location in response to predation risk using our moving window approach, we formulated a mixed effects model using a similar structure as explained for our moving window home range size model. We replaced the dependent variable with distance moved (meters), which we log transformed to meet the assumptions of a normal distribution. Fixed and random effects remained the same except predation risk represented risk associated with the previous home range.

We simulated draws from the joint posterior distributions of the model parameters for all mixed effects models using non-informative priors with the “sim” function (run in Program R using package “arm” [53]). We extracted the mean and 95% credible intervals (CI) around the mean [54] based on 5000 simulations. We visually inspected residual plots to assess model fit and deemed them satisfactory.

Roost site assessment. Roost sites provide protection from predators and harsh weather conditions [72,73], and thus represent an important measure of space use. Like home range formation, where individuals roost each night changes in response to current conditions; however, as each roost site is embedded within an individual’s home range, the scale of the response is inherently different. We used GPS coordinates of estimated roost site locations acquired via radio-telemetry to physically locate roost sites. We approached the roost during daylight hours when unoccupied and systematically searched the area surrounding the estimated coordinates based on the size of the error ellipse (i.e., maximum 17m search radius) until the presence of fecal matter and feathers confirmed a roost location [74]. To assess vegetation characteristics, we established two 5-m radius plots, one centered on the roost site and another at a non-use site located 35m from the roost site in a randomly selected direction. At each plot, we recorded vegetation cover (percentage warm season grass, cool season grass, bare ground, and litter) using ocular estimation as well as litter depth and visual obstruction (following BBIRD grassland sampling protocol, <http://umt.edu/bbird/>).

We tested for the effects of risk group, sex, and their interaction, and date on vegetation characteristics with a permutational multivariate analysis of variance (PERMANOVA) using distance matrices (adonis) (run in Program R using package “vegan” [75]). To test for systematic differences in vegetation characteristics among study sites and across the sampling season, we developed a single model using the paired non-use data. We then developed two additional

models, one using data from roost sites selected prior to the onset of the hunting season, and the second using data from roost sites selected during the hunting season. Because roost sites for individuals were sampled unevenly within seasons with some individuals measured multiple times and others not at all, we sub-sampled the dataset by randomly selecting one roost per season, per individual to meet the independence assumptions for the adonis analysis. We bootstrapped the adonis results from each model 1000 times, incorporating a new random sample of roost/non-use sites for each iteration. We extracted the median F and lower 2.5% and upper 97.5% bounds and the corresponding p-value for each term in the model, and accepted a result as 'significant' if the median p-value was less than $\alpha = 0.05$.

Results

Predation risk

During the study, 31 cameras across 10 sites took 322,925 images, and detected 590 hunters. Cameras recorded more hunters on high-risk than low-risk sites during the early-season (Fig 2; Tables 1 and 2), but hunter numbers declined in the high-risk group (effect of late season = -0.005, CI: -0.007, -0.003) with predation risk becoming equivocal between groups by the late season (Fig 2; difference between high- and low-risk groups during the late season = 0.00, CI: -0.002, 0.003).

Space use

We captured and radio-collared 226 pheasants (99 male, 127 female) in 2012 and 2013. Due to constraints on radio triangulation, we included 145 unique individuals (male, low = 35; male,

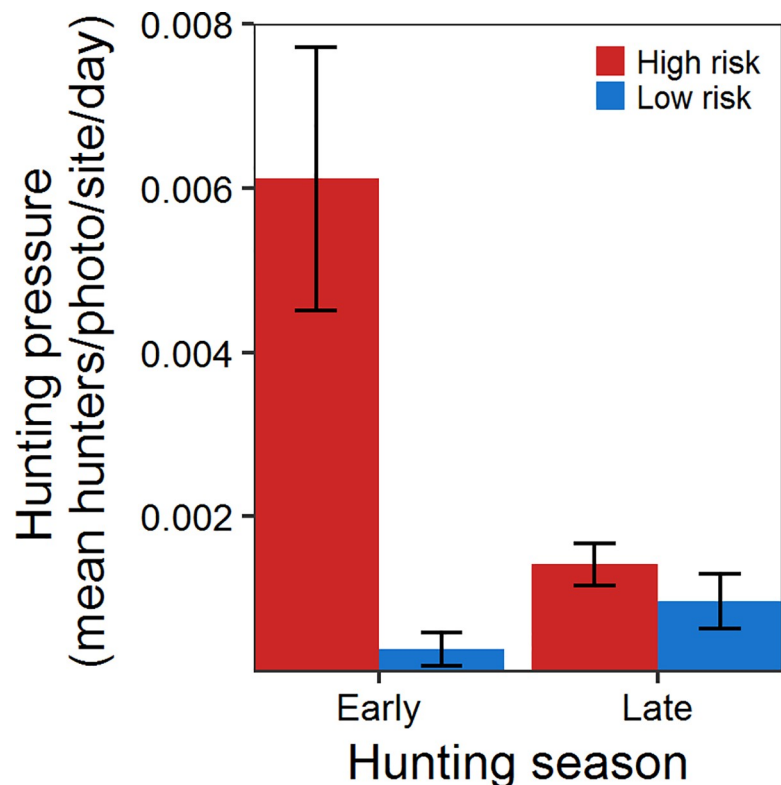


Fig 2. Hunting pressure during the early and late hunting season on high and low risk sites. Hunting pressure (mean number of hunters per photo, per site, per day) on high-risk sites (red bar) early in the hunting season was higher and more variable than hunting pressure on low-risk sites (blue bar) during either season and high-risk sites late in the hunting season. Error bars represent the standard error around the mean.

<https://doi.org/10.1371/journal.pone.0222272.g002>

high = 31; female, low = 36; female, high = 43) in the traditional home range size models, and 101 unique individuals (male, low risk = 27; male, high risk = 18; female, low risk = 27; female, high risk = 29) in the traditional home range location models; however, each individual was not necessarily represented during each season. Sample sizes between the home range size and home range location analyses differ due to the paired nature of the home range location analysis. Specifically, distances between pre- and early or late season home ranges could not be calculated for individuals where a pre-, early, or late season home range could not be created when radio-locations during a given season were inadequate (e.g., due to a mortality). Because we treated hunting season and risk as continuous variables in our moving window approach, we were able to include 137 unique individuals (male = 58, female = 79).

We measured vegetative characteristics at 105 roost sites used prior to the hunting season, 188 roost sites used during the hunting season, and 287 non-use sites across all seasons. Due to our random sub-sampling design (to meet independence assumptions of our analysis method), our roost site vegetation analysis included characteristics from 88 roosts used prior to the hunting season (male, low risk = 19; male, high risk = 18; female, low risk = 21; female, high risk = 33), and 133 roosts used during the hunting season (male, low risk = 30; male, high risk = 19; female, low risk = 39; female, high risk = 45), which we paired with 218 non-use locations (male, low risk = 48; male, high risk = 36; female, low risk = 60; female, high risk = 74).

Home range

The traditional home range analysis revealed that female pheasants on high-risk sites increased home range size during the early pheasant-hunting season (Fig 3A and 3B; Table 3), but the effect decreased by the late hunting season when home range sizes were not different from the pre-season. There was no significant effect of risk group or season on male pheasant home range size (Fig 3C and 3D; Tables 1 and 3). For female pheasants on high-risk sites, the traditional analysis revealed a significant shift in home range center (Fig 4A and 4B; Tables 1 and 3), with the effect apparent throughout the hunting season. There was no effect of predation risk on male home range location; however, males on all sites shifted home range center as the hunting season progressed (Fig 4C and 4D; Tables 1 and 3).

Our moving window analysis revealed that the home range size of male and female pheasants increased by an average of 9.39 hectares with every one hunter per photo, per site, per day increase in hunting pressure (Fig 5A; Table 4). Shifts in home range center were also positively related to hunting pressure, as individuals shifted home range location 3.82 meters when their previous home range location experienced one hunter per photo, per site, per day (Fig 5B; Table 4).

Table 1. Descriptive statistics describing hunting pressure and pheasant behaviors. Mean (±S.E.) hunting pressure (hunters per photo per site per day), pheasant home range size (ha) based on 95% kernel utilizations distribution, and shifts in pheasant 50% home range center (m) from the previous season, for two experimental treatments and three seasons with *a priori* expectation of different hunting pressure and thus differences in predation risk.

Treatment	Season	Hunters	Home range size		Home range shift	
			Female	Male	Female	Male
High risk	Pre	–	100.46 (14.29)	168.48 (34.49)	–	–
	Early	0.0061 (0.0016)	442.09 (125.18)	208.77 (40.16)	484.28 (110.71)	363.43 (106.01)
	Late	0.0014 (0.0003)	84.49 (8.94)	133.91 (23.09)	930.08 (278.25)	461.82 (151.16)
Low risk	Pre	–	130.10 (41.33)	165.70 (30.98)	–	–
	Early	0.0004 (0.0002)	108.04 (19.61)	168.25 (32.52)	188.62 (83.50)	269.74 (53.80)
	Late	0.0010 (0.0003)	95.08 (14.28)	119.94 (21.12)	182.35 (40.89)	319.61 (71.77)

<https://doi.org/10.1371/journal.pone.0222272.t001>

Table 2. Predictors of predation risk (parameter estimates and 95% credible intervals). Estimates represent differences from the Intercept (high-risk, early-season) and are considered 'significant' (bold) if credible intervals do not include zero. Posterior distributions of group-specific means were obtained from the parameterization of each model. If the 95% CI of the difference between the posterior distributions of two means does not overlap zero, we consider the means to be different.

Predictors	β^a	q2.5 ^b	q97.5 ^b
Intercept	0.006	0.005	0.008
Risk group (low)	-0.006	-0.008	-0.004
Season (late)	-0.005	-0.007	-0.003
Risk group (low): Season (late)	0.005	0.002	0.009

^a Estimated coefficient (mean of posterior distribution)

^b q2.5 and q97.5 = 2.5% and 97.5% quantiles of the posterior distribution

<https://doi.org/10.1371/journal.pone.0222272.t002>

Roost site

We saw consistent patterns in all three of our model sets as our pre-season, within season, and non-use vegetation data all showed significant differences between risk groups and across the sampling period, but not between sexes (Table 5).

Mortality

Of the 150 radio collared pheasants alive at the onset of the hunting season, we recorded 49 total mortality events during the hunting season (Fig 6). The mortality for males on high risk sites was 30% during the first 10 days of the hunting season, with a majority of mortality events occurring in the first 5 days. Comparatively, males on low risk sites experienced 9% mortality in the first 10 days of the hunting season. Females on high risk sites experienced 11% mortality in the first 10 days of the hunting season, with no recorded mortality events for females on low risk sites during the same timeframe.

Discussion

We simultaneously assessed the response of a vulnerable (male) and invulnerable (female) prey population to spatial and temporal variation in predation risk, and show that predation risk alone can alter space use, but that depredation within the prey populations can obscure such effects if the responses are not measured at the appropriate spatial and temporal scale. Indeed, we show that the response of the prey population is scale specific and likely reflects the spatial and temporal scale with which prey interact with predators and assess trade-offs with other important ecological processes that affect space use. Over three periods with distinct differences in predation risk, the population exposed to only the perception of predation risk increased home range size and shifted home range centers between the pre- and early-hunting seasons on risk-high risk, but not low risk, sites (Figs 3 and 4). Moreover, the invulnerable population proved sensitive to temporal variation in predation risk, as changes in home range formation were reversed on high-risk sites once risk subsided (Fig 3). The dramatic response to the perception of predation risk suggests that home range formation is highly plastic in response to spatial and temporal variation in predation risk, and begs the question of why we failed to see a similar response in the vulnerable population when using the same assessment (Figs 3 and 4).

One reason may be the true challenge of separating the inherent interaction between behavioral modification at the individual level and differential mortality at the population level [76–78]. We observed extreme variation in early-season home range formation among members of

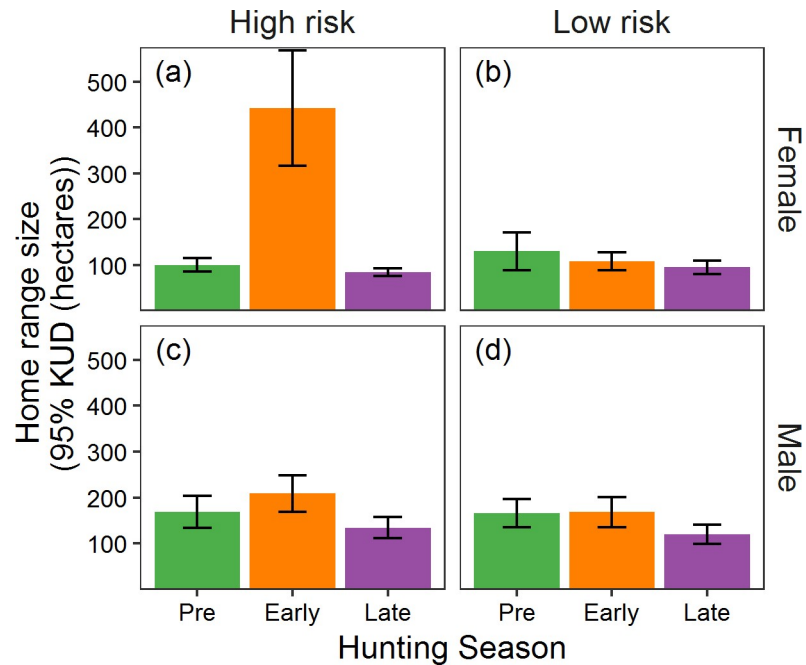


Fig 3. Our traditional approach found that only female pheasants in the high-risk group showed an increase in home range size in response to the onset of the hunting season (Table 2). Colored bars represent mean home range size (hectares) for female and male pheasants in high- and low-risk groups before (pre) and during (early and late) the hunting season. Error bars represent the standard error around the mean.

<https://doi.org/10.1371/journal.pone.0222272.g003>

Table 3. Predictors of home range size and location (parameter estimates and 95% credible intervals)—traditional analysis. Estimates represent differences from the Intercept (low-risk, pre-season, 2012) and are considered ‘significant’ (bold) if credible intervals do not include zero. Posterior distributions of group-specific means were obtained from the parameterization of each model. If the 95% CI of the difference between the posterior distributions of two means does not overlap zero, we consider the means to be different.

Model	Predictors	Female			Male		
		β^a	q2.5 ^b	q97.5 ^b	β^a	q2.5 ^b	q97.5 ^b
Size	Intercept	4.83	4.40	5.25	5.21	4.73	5.70
	Risk group (high)	-0.03	-0.56	0.50	0.01	-0.60	0.63
	Season (early)	0.09	-0.29	0.49	0.17	-0.15	0.49
	Season (late)	0.09	-0.34	0.51	-0.09	-0.46	0.29
	Year (2013)	-0.68	-0.98	-0.39	-1.01	-1.36	-0.67
	Risk group (high): Season (early)	0.77	0.25	1.31	0.14	-0.36	0.65
	Risk group (high): Season (late)	-0.21	-0.77	0.36	0.03	-0.51	0.57
Location	Intercept	5.21	4.73	5.70	5.57	4.80	6.34
	Risk group (high)	0.01	-0.60	0.63	0.12	-0.87	1.09
	Season (pre to late)	0.17	-0.15	0.49	0.42	0.10	0.75
	Year (2013)	-0.09	-0.46	0.29	-0.75	-1.29	-0.21
	Risk group (high): Season (pre to late)	-1.01	-1.36	-0.67	-0.15	-0.62	0.33

^a Estimated coefficient (mean of posterior distribution)

^b q2.5 and q97.5 = 2.5% and 97.5% quantiles of the posterior distribution

<https://doi.org/10.1371/journal.pone.0222272.t003>

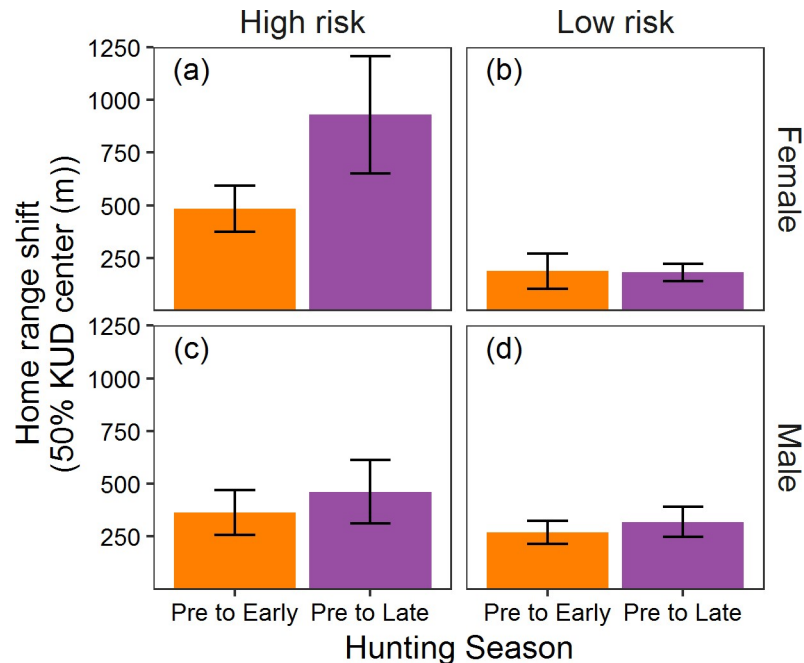


Fig 4. Our traditional approach revealed a shift in home range center for all pheasants, but only female pheasants occupying high-risk sites shifted home range center in response to the onset of the hunting season. Colored bars represent mean shift home range center for males and females in each risk group from the pre- to early hunting season (orange bar) and from the pre- to late hunting season (purple bar). Error bars represent the standard error around the mean.

<https://doi.org/10.1371/journal.pone.0222272.g004>

the invulnerable population (Fig 3A), but not the vulnerable population (Fig 3C) that may highlight how differential mortality affects behavioral expression measured at the population level. The average home range of females on high-risk sites doubled from the pre- to early-hunting seasons, but individual responses ranged from a 1052% decrease to a 98% increase. Perceived predation risk manifests individually [79,80], and responses are likely a complex process unique to each individual as trade-offs inherent in home range adjustments are likely sensitive to a range of factors including sex, age, experiences, body condition, resource availability, familiarity with the surrounding landscape [81–84], and maybe most importantly, predator encounter rate [21]. Although there were substantial differences in the number of hunters between high- and low-risk sites (Fig 2), hunter movements within sites ultimately determine encounter rates for individual pheasants [85]. Females that did not alter home range formation may have simply occupied safer locations (i.e., lower predator encounter rates) within high-risk sites. Assuming the same pattern holds true, males on high-risk sites that survived the onset of the hunting season may have simply had fewer encounters with hunters, and thus no need to alter their home range. In contrast, males that had multiple encounters with hunters were at greater risk of being harvested and were removed from the population before expressing a measurable response (i.e., adjusting their home range). Thus it is possible that differential mortality between prey that encounter predators, and those that don't, may mask the potential effects of perceived predation risk on a population (Fig 1E).

The inconsistency we documented in home range formation between our vulnerable and invulnerable populations also highlights the importance of measuring outcomes at temporal scales that reflect the ecological processes affecting predator-prey interactions [11,23,86]. The complexities of measuring a temporally dynamic response are clearly compounded when the

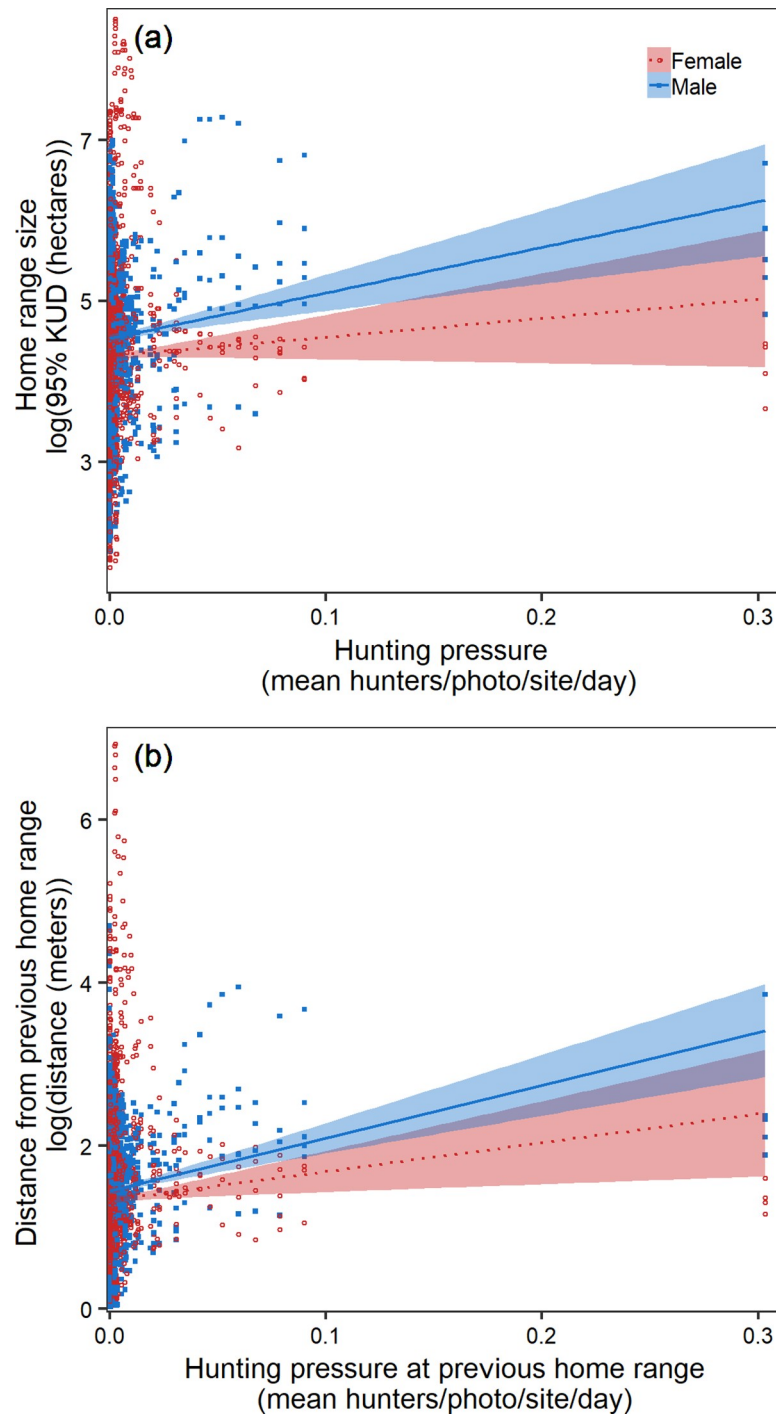


Fig 5. When hunting pressure and time were considered continuously rather than as discrete groups, there was a positive relationship for males and females between home range size and predation risk (a) as well as the distance moved between consecutive home ranges and predation risk (b). Linear regression of the relationship between home range size and distance moved for males (solid blue line) and females (dotted red line) with shaded error ribbons representing the standard error around the mean.

<https://doi.org/10.1371/journal.pone.0222272.g005>

process being measured, predation, inherently affects your sampling effort. For example, given that only 15–30% of encounters between hunters and vulnerable pheasants (i.e., males) result

Table 4. Predictors of home range size and location (parameter estimates and 95% credible intervals)—moving window analysis. Estimates represent differences from the Intercept (female, 2012) and are considered ‘significant’ (bold) if credible intervals do not include zero. Posterior distributions of group-specific means were obtained from the parameterization of each model. If the 95% CI of the difference between the posterior distributions of two means does not overlap zero, we consider the means to be different.

Predictors	Size			Location		
	β^a	q2.5 ^b	q97.5 ^b	β^a	q2.5 ^b	q97.5 ^b
Intercept	4.70	4.39	5.02	1.69	1.30	2.08
Log mean hunters	2.24	0.83	3.72	1.34	0.43	2.26
Sex (male)	0.18	-0.09	0.45	0.07	-0.14	0.28
Median season day	-0.005	-0.006	-0.003	-0.003	-0.004	-0.002
Window length	0.05	0.04	0.06	0.03	0.03	0.04
Year (2013)	-1.28	-1.42	-1.13	-0.86	-0.97	-0.76

^a Estimated coefficient (mean of posterior distribution)

^b q2.5 and q97.5 = 2.5% and 97.5% quantiles of the posterior distribution

<https://doi.org/10.1371/journal.pone.0222272.t004>

in mortality [87,88], we would assume that vulnerable individuals are afforded an opportunity to alter behaviors in response to changing predation risk on the landscape. Still, even with low depredation rates, 85% of the total hunter-related mortality occurred during the early hunting season (Fig 6). As many males died before we recorded sufficient locations in the early-season, our sample size of males was reduced, resulting in our limited ability to detect a change in home range formation. However, using an approach with a resolution that more accurately reflects the temporal scale of predator-prey interactions, we show that independent of true vulnerability, pheasants increase home range size in response to predation risk on the landscape (Fig 5). Increasing the temporal resolution in our behavioral assessment allowed us to describe an individuals’ home range during the most important period shaping home range formulation, and thus facilitated a more detailed understanding of predator-prey interactions that reflects the temporal scale that drives behavioral trait expression within the population.

Table 5. Predictors of pre- and within season and non-use roost site vegetative characteristics (median F statistic, p-values and respective 95% credible intervals). Results were accepted as ‘significant’ (bold) if the median p-value was less than $\alpha = 0.05$.

Model	Predictors	F ^b	p ^c
Pre 1,87 ^a	Risk group	4.87 (3.82, 6.00)	0.004 (0.011, 0.001)
	Sex	0.62 (0.27, 1.10)	0.587 (0.844, 0.340)
	Risk group: Sex	0.630 (0.15, 1.32)	0.623 (0.917, 0.256)
	Date	1.96 (0.98, 3.48)	0.110 (0.397, 0.012)
Within 1,132 ^a	Risk group	3.63 (2.29, 5.40)	0.010 (0.066, 0.002)
	Sex	1.26 (0.61, 2.18)	0.29 (0.662, 0.081)
	Risk group: Sex	0.80 (0.35, 1.71)	0.510 (0.820, 0.153)
	Date	2.91 (1.38, 5.13)	0.023 (0.258, 0.002)
Non-use 1,217 ^a	Risk group	6.58 (5.36, 7.94)	0.001 (0.005, 0.001)
	Sex	0.14 (-0.16, 0.51)	0.935 (0.994, 0.692)
	Risk group: Sex	0.23 (-0.06, 0.59)	0.881 (0.990, 0.646)
	Date	16.86 (14.13, 19.56)	0.001 (0.001, 0.001)

^a Model and corresponding degrees of freedom

^b Median F statistic (lower 2.5%, upper 97.5%)

^c Median p-value (lower 2.5%, upper 97.5%)

<https://doi.org/10.1371/journal.pone.0222272.t005>

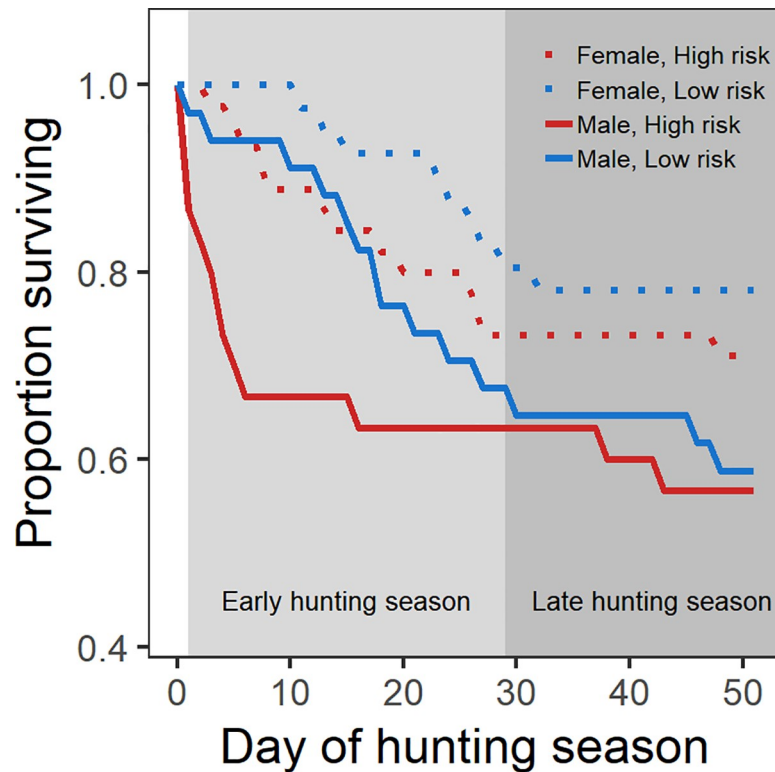


Fig 6. Males on high risk sites experienced higher mortality at the onset of hunting season, but by the end of the early hunting season, the proportion of the initial populations of males surviving on high and low risk sites were similar. Proportion of male (solid lines) and female (dotted lines) pheasants surviving during the early (light gray shaded region) and late (dark gray shaded region) hunting seasons on high (red) and low (blue) risk sites.

<https://doi.org/10.1371/journal.pone.0222272.g006>

Clearly, the dynamic nature of risk assessment allows individuals to continually adjust behaviors to reflect changes in predation risk [89,90], as is demonstrated by the response of our invulnerable population to the seasonal decline in predation. Our capacity to detect such changes is ultimately subject to our ability to measure responses at appropriate scales.

The importance of scale in shaping and measuring responses to predation risk is further illustrated when we consider roost sites. Unlike shifts in home range formation, the use of roost sites appears insensitive to predation risk. Although there were differences among risk groups, the differences reflect inherent differences among study sites, not responses to predation risk. That we failed to find a relationship between predation risk and roost site use is initially surprising, but when we considered the temporal scale of predator-prey interactions and the subsequent response of the prey, our findings appear less unexpected. Pheasants typically select, and subsequently occupy, roosts after hunting is closed for the day. If the assessment of risk is timed with the selection process [14], we might not expect roost site use to be responsive simply because there is insufficient information to indicate a change is necessary. Moreover, based on the significant variation in how predation risk shapes home range formulation, it appears that the response of pheasants to predation risk may reflect predator-prey encounter rates, and not the presence of predators on the landscape per se. Pheasants may simply not encounter hunters when occupying roosts, thus limiting the feedback necessary to initiate a shift in roost site use.

Even if pheasants do encounter hunters at the roost, the hierarchical nature of space use [91,92] and increasing evidence that ecological processes manifest at specific spatial and

temporal scales [93,94], suggests that behavioral responses at the spatial scale of a roost site may not be necessary [92]. When exposed to high predation risk, pheasants clearly alter home range formation, presumably shifting home ranges to locations with lower predation risk. Upon occupying a location with lower risk, it is presumably not necessary to then alter roost sites to be 'safer', as there is no additional benefit. Ironically, the relative safety of the roost site, not the home range, may be the primary determinant of the source of feedback initiating changes in space use, but the safety of a home range, not the roost site, appears to guide subsequent space use. Empirical studies of wildlife-habitat relationships abound [7,8,10,12,95] including examinations of the effects of predation risk on space use [13,15–17,60]; however, despite evidence that wildlife-habitat relationships must be measured at the appropriate ecological scale [93] few studies have considered the consequences of predation risk across multiple spatial scales (but see [96,97]). Although our results are not definitive, they suggest that trade-offs among sources of natural selection, and in particular predation risk, likely act across ecological scales to ultimately shape space use within a population.

Interactions with predators clearly have implications for prey and in some instances entire ecosystems [1–3,5]. The extent to which the direct effects of predators on prey populations (i.e., predation rate), versus the indirect effects of predators on prey individuals (i.e., perceived predation risk) drive trait expression in wild populations remains largely unresolved [98]. For example, there is ongoing debate over the relative importance of direct and indirect predator effects on trophic cascades in natural systems [37,99–101]. Our data cannot address such a complex controversy; yet we would caution, as others have (e.g., [102]), that it is challenging to rely on correlates of predation risk for assessing the role of perceived predation risk in shaping ecological systems. Predation risk and predation rate are not mutually exclusive, and can shape systems in very different ways (Fig 1). Indeed, without our ability to independently assess the indirect and direct effects of hunting on pheasant space use, we may have come to very different conclusions. We also argue that representing how prey perceive risk requires scale-appropriate assessments of risk measured with an appropriate level of resolution. Ecological conditions are increasingly identified as scale-dependent [11,47–49,51,103] and even in our simple system slight differences in the scale (weeks versus months, home range versus roost site) at which we considered risk and measured the response of prey had significant implications. Predation risk, predation rate, and the corresponding scale of response are highly species and context dependent [47,104], which may ultimately limit our understanding of how perceived predation risk shapes ecological systems. Given the complexities of spatial and temporal variation in predation risk and predation rate [15,21,105] we argue that understanding wild prey populations requires tests that simultaneously and independently alter risk and mortality while measuring outcomes at ecologically appropriate scales.

Acknowledgments

We thank the students, volunteers, technicians, Nebraska Game and Parks Commission staff and private landowners who made this study possible and RM and PM for invaluable field insights and companionship. We also thank several anonymous reviewers, and J. Laux for providing insightful comments that greatly improved this manuscript.

Author Contributions

Conceptualization: Lindsey N. Messinger, Joseph J. Fontaine.

Data curation: Lindsey N. Messinger.

Formal analysis: Lindsey N. Messinger, Erica F. Stuber, Christopher J. Chizinski, Joseph J. Fontaine.

Funding acquisition: Joseph J. Fontaine.

Investigation: Lindsey N. Messinger, Joseph J. Fontaine.

Methodology: Lindsey N. Messinger, Erica F. Stuber, Christopher J. Chizinski, Joseph J. Fontaine.

Project administration: Joseph J. Fontaine.

Resources: Lindsey N. Messinger, Erica F. Stuber, Joseph J. Fontaine.

Software: Lindsey N. Messinger, Erica F. Stuber, Christopher J. Chizinski.

Supervision: Joseph J. Fontaine.

Validation: Lindsey N. Messinger, Joseph J. Fontaine.

Visualization: Lindsey N. Messinger, Christopher J. Chizinski, Joseph J. Fontaine.

Writing – original draft: Lindsey N. Messinger, Joseph J. Fontaine.

Writing – review & editing: Lindsey N. Messinger, Erica F. Stuber, Christopher J. Chizinski, Joseph J. Fontaine.

References

1. Fretwell SD, Lucas HLJ. On territorial behavior and other factors influencing habitat distribution in birds. *Acta Biotheor.* 1969; 19(1):16–36.
2. Rosenzweig ML. Habitat selection and population interactions: The search for mechanism. *Am Nat* [Internet]. 1991; 137:S5–28. Available from: <http://www.journals.uchicago.edu/doi/10.1086/285137>
3. Holmes RT, Marra PP, Sherry TW. Habitat-specific demography of breeding black-throated blue warblers (*Dendroica caerulescens*): Implications for population dynamics. *J Anim Ecol* [Internet]. 1996; 65(2):183. Available from: <http://www.jstor.org/stable/5721?origin=crossref>
4. Morris DW. Toward an ecological synthesis: A case for habitat selection. Vol. 136, *Oecologia*. 2003. p. 1–13. <https://doi.org/10.1007/s00442-003-1241-4> PMID: 12690550
5. Morales JM, Moorcroft PR, Matthiopoulos J, Frair JL, Kie JG, Powell RA, et al. Building the bridge between animal movement and population dynamics. *Philos Trans R Soc B Biol Sci* [Internet]. 2010; 365(1550):2289–301. Available from: <http://rspb.royalsocietypublishing.org/cgi/doi/10.1098/rspb.2010.0082>
6. MacArthur R, Levins R. Competition, habitat selection, and character displacement in a patchy environment. *Proc Natl Acad Sci* [Internet]. 1964; 51(6):1207–10. Available from: <http://www.pnas.org/cgi/doi/10.1073/pnas.51.6.1207>
7. Whitham TG. Habitat selection by pemphigus aphids in response to response limitation and competition. *Ecology* [Internet]. 1978; 59(6):1164–76. Available from: <http://doi.wiley.com/10.2307/1938230>
8. Jorde DG, Krapu GL, Crawford RD, Hay MA. Effects of weather on habitat selection and behavior of Mallards wintering in Nebraska. *Condor* [Internet]. 1984; 86:258–65. Available from: http://www.jstor.org/stable/1366993%5Cnhttp://www.jstor.org/stable/1366993?seq=1&cid=pdf-reference#references_tab_contents
9. Gilliam JF, Fraser DF. Habitat selection under predation hazard: test of a model with foraging minnows. *Ecology*. 1987; 68(6):1856–62. <https://doi.org/10.2307/1939877> PMID: 29357169
10. Binkley CA, Resetarits WJ. Habitat selection determines abundance, richness and species composition of beetles in aquatic communities. *Biol Lett* [Internet]. 2005; 1(3):370–4. Available from: <http://rsbl.royalsocietypublishing.org/cgi/doi/10.1098/rsbl.2005.0310>
11. Orians GH, Wittenberger JF. Spatial and temporal scales in habitat selection. *Am Nat* [Internet]. 1991; 137:S29–49. Available from: <http://www.journals.uchicago.edu/doi/10.1086/285138>
12. Johnson CJ, Parker KL, Heard DC. Foraging across a variable landscape: Behavioral decisions made by woodland caribou at multiple spatial scales. *Oecologia*. 2001; 127(4):590–602. <https://doi.org/10.1007/s004420000573> PMID: 28547497

13. Turner AM, Montgomery SL. Spatial and temporal scales of predator avoidance: Experiments with fish and snails. *Ecology*. 2003; 84(3):616–22.
14. Lima SL, Dill LM. Behavioral decisions made under the risk of predation: a review and prospectus. *Can J Zool [Internet]*. 1990; 68(4):619–40. Available from: <http://www.nrcresearchpress.com/doi/abs/10.1139/z90-092>
15. Creel S, Winnie J, Maxwell B, Hamlin K, Creel M. Elk alter habitat selection as an antipredator response to wolves. *Ecology*. 2005; 86(12):3387–97.
16. Fontaine JJ, Martin TE. Habitat selection responses of parents to offspring predation risk: An experimental test. *Am Nat [Internet]*. 2006; 168(6):811–8. Available from: <https://doi.org/10.1086/508297> PMID: 17109323
17. Valeix M, Loveridge AJ, Chamaillé-Jammes S, Davidson Z, Murindagomo F, Fritz H, et al. Behavioral adjustments of African herbivores to predation risk by lions: Spatiotemporal variations influence habitat use. *Ecology*. 2009; 90(1):23–30. <https://doi.org/10.1890/08-0606.1> PMID: 19294909
18. Lima SL. Stress and decision making under the risk of predation: Recent developments from Behavioral, reproductive, and ecological perspectives. *Adv Study Behav*. 1998; 27(C):215–90.
19. Hebblewhite M, Pletscher DH, Paquet PC. Elk population dynamics in areas with and without predation by recolonizing wolves in Banff National Park, Alberta. *Can J Zool [Internet]*. 2002; 80(5):789–99. Available from: <http://www.nrcresearchpress.com/doi/abs/10.1139/z02-058>
20. Frid A, Baker GG, Dill LM. Do shark declines create fear-released systems? *Oikos*. 2008; 117(2):191–201.
21. Lima SL, Bednekoff PA. Temporal variation in danger drives antipredator behavior: The predation risk allocation hypothesis. *Am Nat [Internet]*. 1999; 153(6):649–59. Available from: <https://doi.org/10.1086/303202> PMID: 29585647
22. Sih A, McCarthy TM. Prey responses to pulses of risk and safety: Testing the risk allocation hypothesis. *Anim Behav*. 2002; 63(3):437–43.
23. Creel S, Winnie JA. Responses of elk herd size to fine-scale spatial and temporal variation in the risk of predation by wolves. *Anim Behav*. 2005; 69(5):1181–9.
24. Creel S, Winnie JA, Christianson D, Liley S. Time and space in general models of antipredator response: tests with wolves and elk. *Anim Behav*. 2008; 76(4):1139–46.
25. Tolon V, Dray S, Loison A, Zeileis A, Fischer C, Baubet E. Responding to spatial and temporal variations in predation risk: space use of a game species in a changing landscape of fear. *Can J Zool [Internet]*. 2009; 87(12):1129–37. Available from: <http://www.nrcresearchpress.com/doi/abs/10.1139/Z09-101>
26. Sih A. Predators and prey lifestyles: An evolutionary and ecological overview. In: Kerfoot WC, Sih A, editors. *Predation: direct and indirect impacts on aquatic communities*. University Press of New England; 1987. p. 203–24.
27. Frid A, Dill L. Human-caused disturbance as a form of predation risk. *J Wildl Manage [Internet]*. 2002; 6(1):11. Available from: <http://www.consecol.org/vol6/iss1/art11>
28. Cresswell W. Non-lethal effects of predation in birds. *Ibis (Lond 1859)*. 2008; 150(1):3–17.
29. Laundre JW, Hernandez L, Ripple WJ. The landscape of fear: Ecological implications of being afraid. *Open Ecol J [Internet]*. 2010; 3(3):1–7. Available from: <http://benthamopen.com/ABSTRACT/TOECOLJ-3-3-1>
30. Schmitz OJ. Direct and indirect effects of predation and predation risk in old-field interaction webs. *Am Nat [Internet]*. 1998; 151(4):327–42. Available from: <https://doi.org/10.1086/286122> PMID: 18811324
31. Zanette LY, White AF, Allen MC, Clinchy M. Perceived predation risk reduces the number of offspring songbirds produce per year. *Science (80-)*. 2011; 334(6061):1398–401.
32. Abbey-Lee RN, Mathot KJ, Dingemans NJ. Behavioral and morphological responses to perceived predation risk: A field experiment in passerines. *Behav Ecol*. 2016; 27(3):857–64.
33. Brown J. Patch use as an indicator of habitat preference, predation risk, and competition. *Behav Ecol Sociobiol*. 1988; 22(1):37–47.
34. Brown JS, Kotler BP. Hazardous duty pay and the foraging cost of predation. *Ecol Lett*. 2004; 7(10):999–1014.
35. Thomson RL, Forsman JT, Sardà-Palomera F, Mönkkönen M. Fear factor: Prey habitat selection and its consequences in a predation risk landscape. 2016; 29(4):507–14.
36. Kotler BP, Holt RD. Predation and competition: The interaction of two types of species interactions. *Oikos*. 1989; 54(2):256–60.

37. Kauffman MJ, Brodie JF, Jules ES. Are wolves saving Yellowstone's aspen? A landscape-level test of a behaviorally mediated trophic cascade. *Ecology*. 2010; 91(9):2742–55. <https://doi.org/10.1890/09-1949.1> PMID: 20957967
38. Nelson EH, Matthews CE, Rosenheim JA. Predators reduce prey population growth by inducing changes in prey behavior. *Ecology*. 2004; 85(7):1853–8.
39. Stuber EF, Grobis MM, Abbey-Lee R, Kempnaers B, Mueller JC, Dingemans NJ. Perceived predation risk affects sleep behaviour in free-living great tits, *Parus major*. *Anim Behav*. 2014; 98:157–65.
40. Kelley JL, Evans JP, Ramnarine IW, Magurran AE. Back to school: Can antipredator behaviour in guppies be enhanced through social learning? *Anim Behav*. 2003; 65(4):655–62.
41. Smith ME, Belk MC. Risk assessment in western mosquitofish (*Gambusia affinis*): Do multiple cues have additive effects? *Behav Ecol Sociobiol*. 2001; 51(1):101–7.
42. Bleicher SS, Ylönen H, Kämpylä T, Haapakoski M. Olfactory cues and the value of information: voles interpret cues based on recent predator encounters. *Behav Ecol Sociobiol*. 2018; 72(12). <https://doi.org/10.1007/s00265-018-2600-9> PMID: 30573941
43. Proffitt KM, Grigg JL, Hamlin KL, Garrott RA. Contrasting effects of wolves and human hunters on elk behavioral responses to predation risk. *J Wildl Manage* [Internet]. 2009; 73(3):345–56. Available from: <http://www.bioone.org/doi/abs/10.2193/2008-210>
44. Nebraska G and PC (NGPC). Hunting Guide [Internet]. 2016. Available from: <http://digital.outdoornebraska.gov/i/707958-hunting-guide-2016>
45. Stokes AW. An eight-year study of a northern Utah pheasant population. *J Wildl Manage*. 1968; 32(4):867–74.
46. Leif A. Survival, spatial ecology and habitat use of male Ring-necked Pheasants in South Dakota: Completion report. South Dakota Department of Game, Fish and Parks, Wildlife Division; 2003.
47. Morris DW. Scales and costs of habitat selection in heterogeneous landscapes. *Evol Ecol*. 1992; 7653(1):412–32.
48. Lima SL, Zollner PA. Towards a behavioral ecology of ecological landscapes. *Trends Ecol Evol*. 1996; 11(3):131–5. [https://doi.org/10.1016/0169-5347\(96\)81094-9](https://doi.org/10.1016/0169-5347(96)81094-9) PMID: 21237783
49. Hebblewhite M, Merrill EH. Trade-offs between predation risk and forage differ between migrant strategies in a migratory ungulate. *Ecology*. 2009; 90(12):3445–54. <https://doi.org/10.1890/08-2090.1> PMID: 20120812
50. Giudice JH, Ratti JT. Ring-necked Pheasant (*Phasianus colchicus*), version 2.0. In: Poole AF, Gill F., editors. *The Birds of North America* [Internet]. Ithaca, NY, USA: Cornell Lab of Ornithology; 2001. Available from: <https://doi.org/10.2173/bna.572>
51. Simonsen VL, Fontaine JJ. Landscape context influences nest survival in a Midwest grassland. *J Wildl Manage*. 2016; 80(5):877–83.
52. Bates D, Maechler M, Bolker BM, Walker S. lme4: Linear mixed-effects models using Eigen and S4 [Internet]. Vol. xx, *Journal of Statistical Software*. 2015. p. xx. Available from: <http://cran.r-project.org/package=lme4%5Cnhttp://arxiv.org/abs/1406.5823>
53. Gelman A, Su Y, Yajima M, Hill J, Pittau M, Kerman J, et al. *Arm: data analysis using regression and multilevel/hierarchical models*. 2015.
54. Gelman A, Hill J. *Data analysis using regression and multilevel/hierarchical models*. Cambridge. 2007. 651 p.
55. Labisky R. Nightlighting: its use in capturing pheasants, prairie chickens, bobwhites, and cottontails. *Biol notes*. 1968;062.
56. Kenward R. *A manual for wildlife radio tagging*. Academic Press; 2000.
57. Gilsdorf JM, Vercauteren KC, Hygnstrom SE, Walter WD, Boner JR, Clements GM. An integrated vehicle-mounted telemetry system for VHF telemetry applications. *J Wildl Manage* [Internet]. 2008; 72(5):1241–6. Available from: <http://www.bioone.org/doi/abs/10.2193/2007-348>
58. Lenth R V. On finding the source of a signal. *Technometrics*. 1981; 23(2):149–54.
59. DeNardo DF, Sinervo B. Effects of steroid hormone interaction on activity and home-range size of male lizards. *Horm Behav*. 1994; 28(3):273–87. <https://doi.org/10.1006/hbeh.1994.1023> PMID: 7814007
60. Anderson DP, Forester JD, Turner MG, Frair JL, Merrill EH, Fortin D, et al. Factors influencing female home range sizes in elk (*Cervus elaphus*) in North American landscapes. *Landsc Ecol*. 2005; 20:257–71.
61. Winkle W Van. Comparison of several probabilistic home-range models. *J Wildl Manage* [Internet]. 1975; 39(1):118. Available from: <http://www.jstor.org/stable/3800474?origin=crossref>

62. Worton BJ. Kernel methods for estimating the utilization distribution in home-range studies. Vol. 70, *Ecology*. 1989. p. 164–8.
63. Calenge C. The package “adehabitat” for the R software: A tool for the analysis of space and habitat use by animals. *Ecol Modell*. 2006; 197(3–4):516–9.
64. Kernohan BJ, Gitzen RA, Millspaugh JJ. Analysis of animal space use and movements. In: *Radio Tracking and Animal Populations* [Internet]. 2001. p. 125–66. Available from: <http://linkinghub.elsevier.com/retrieve/pii/B9780124977815500062>
65. Wszola LS, Simonsen VL, Corral L, Chizinski CJ, Fontaine JJ. Simulating detection-censored movement records for home range analysis planning. *Ecol Modell* [Internet]. 2019; 392(December 2018):268–78. Available from: <https://doi.org/10.1016/j.ecolmodel.2018.10.017>
66. Swihart RK, Slade NA. Influence of sampling interval on estimates of home-range size. *J Wildl Manage*. 1985; 49(4):1019–25.
67. Blundell GM, Maier JA, Debevec EM. Linear home ranges: Effects of smoothing, sample size, and autocorrelation on kernel estimates. *Ecol Monogr*. 2001; 71(3):469–89.
68. De Solla SR, Bonduriansky R, Brooks RJ. Eliminating autocorrelation reduces biological relevance of home range estimates. *J Anim Ecol*. 1999; 68(2):221–34.
69. Fieberg J, Börger L. Could you please phrase “home range” as a question? *J Mammal* [Internet]. 2012; 93(4):890–902. Available from: <https://academic.oup.com/jmammal/article-lookup/doi/10.1644/11-MAMM-S-172.1>
70. Börger L, Franconi N, De Michele G, Gantz A, Meschi F, Manica A, et al. Effects of sampling regime on the mean and variance of home range size estimates. *J Anim Ecol*. 2006; 75(6):1393–405. <https://doi.org/10.1111/j.1365-2656.2006.01164.x> PMID: 17032372
71. Seaman DE, Millspaugh JJ, Kernohan BJ, Brundige GC, Raedeke KJ, Gitzen RA. Effects of sample size on kernel home range estimates. *J Wildl Manage* [Internet]. 1999; 63(2):739. Available from: <http://www.jstor.org/stable/3802664?origin=crossref>
72. Walsberg GE, King JR. The thermoregulatory significance of the winter roost-sites selected by robins in eastern Washington. *Wilson Bull*. 1980; 92(1):33–9.
73. Warner RE, David LM. Woody habitat and severe winter mortality Ring-necked Pheasants in central Illinois. *J Wildl Manage*. 1982; 46(4):923–32.
74. Klimstra WC, Ziccardi VC. Night-roosting habitat of bobwhites. *J Wildl Manage*. 1963; 27(2):202–14.
75. Oksanen J, Blanchet F, Kindt R, Legendre P, Minchin P, O'hara R, et al. Package ‘vegan’. *Community ecology package*. 2013.
76. Anholt BR, Werner EE. Interaction between food availability and predation mortality mediated by adaptive behavior. *Ecology*. 1995; 76(7):2230–4.
77. Dill LM, Rochette R. Mortality, behavior and the effects of predators on the intertidal distribution of littorinid gastropods. *J Exp Mar Bio Ecol*. 2000; 253:165–91. PMID: 11033363
78. Lapidra O, Schoener TW, Leal M, Losos JB, Kolbe JJ. Predator-driven natural selection on risk-taking behavior in anole lizards. *Science* (80-). 2018; 360(6392):1017–20.
79. Mahr K, Riegler G, Hoi H. Parental risk management in relation to offspring defence: Bad news for kids. *Proc R Soc B Biol Sci*. 2014; 282(1798):27–30.
80. Dorset EE, Sakaluk SK, Thompson CF. Behavioral plasticity in response to perceived predation risk in breeding house wrens. *Evol Biol*. 2017; 44(2):227–39. <https://doi.org/10.1007/s11692-016-9402-7> PMID: 28736461
81. Tufto J, Andersen R, Linnell J. Habitat use and ecological correlates of home range size in a small cervid: The Roe Deer. *J Anim Ecol* [Internet]. 1996; 65(6):715–24. Available from: <http://www.jstor.org/stable/5670>
82. Lafontaine A, Drapeau P, Fortin D, St-Laurent MH. Many places called home: the adaptive value of seasonal adjustments in range fidelity. *J Anim Ecol*. 2017; 86(3):624–33. <https://doi.org/10.1111/1365-2656.12645> PMID: 28146328
83. Relyea RA, Lawrence RK, Demarais S. Home Range of desert mule deer: Testing the body-size and habitat-productivity hypotheses. *J Wildl Manage*. 2000; 64(1):146–53.
84. Ofstad E., Herfindal I, Solberg EJ, Heim M, Rolandsen CM, Saether B-E. Use, selection, and home range properties: complex patterns of individual habitat utilization. *Ecosphere*. 2019; 10(4):e02695.
85. Wszola LS, Stuber EF, Chizinski CJ, Lusk JJ, Fontaine JJ. Prey availability and accessibility drive hunter movement. *Wildlife Biol*. 2019; wlb.00526.
86. Dröge E, Creel S, Becker MS, M'soka J. Spatial and temporal avoidance of risk within a large carnivore guild. 2017; 7:189–99. <https://doi.org/10.1002/ece3.2616> PMID: 28070283

87. Leedy D, Hicks L. The pheasants in Ohio. In: McAtee W, editor. *The Ring-necked pheasant and its management in North America*. Washington DC: The American Wildlife Institute; 1945. p. 57–130.
88. Burres E, Fischer D, Wegner D. Analysis of a publicly operated pheasant hunt in southern California. *Cross Bord Waters*. 1999; 244.
89. Altendorf KB, Laundré JW, López González CA, Brown JS. Assessing effects of predation on foraging behavior of mule deer. *J Mammal*. 2001; 82(2):430–9.
90. Sönnichsen L, Bokje M, Marchal J, Hofer H, Jedrzejewska B, Kramer-Schadt S, et al. Behavioural responses of European Roe Deer to temporal variation in predation risk. *Ethology*. 2013; 119(3):233–43.
91. Johnson DH. The comparison of usage and availability measurements for evaluating resource preference. *Ecology*. 1980; 61:65–71.
92. Hutto R. Habitat selection by nonbreeding migrants. In: Cody M, editor. *Habitat selection in birds*. New York: Academic Press; 1985. p. 455–76.
93. Mayor SJ, Schneider DC, Schaefer JA, Mahoney SP. Habitat selection at multiple scales. *Ecoscience*. 2009; 16(2):238–47.
94. Rettie WJ, Messier F. Hierarchical habitat selection by woodland caribou: its relationship to limiting factors. *Ecography (Cop)*. 2008; 23(4):466–78.
95. Lack D. Habitat selection in birds. With special reference to the effects of afforestation on the Breckland avifauna. *J Anim Ecol*. 1933; 2(2):239–62.
96. Heithaus MR, Dill, Lawrence M. Does tiger shark predation risk influence foraging habitat use by bottlenose dolphins at multiple spatial scales? *Oikos*. 2006; 114(2):257–64.
97. Hebblewhite M, Merrill EH. Multiscale wolf predation risk for elk: Does migration reduce risk? *Oecologia*. 2007; 152(2):377–87. <https://doi.org/10.1007/s00442-007-0661-y> PMID: 17287955
98. Eklöv P, Svanbäck R. Predation risk influences adaptive morphological variation in fish populations. *Am Nat*. 2006; 167(3):440–52. <https://doi.org/10.1086/499544> PMID: 16673351
99. Winnie JA. Predation risk, elk, and aspen: Tests of a behaviorally mediated trophic cascade in the Greater Yellowstone Ecosystem. *Ecology*. 2012; 93(12):2600–14. <https://doi.org/10.1890/11-1990.1> PMID: 23431591
100. Beschta R, Ripple W. Are wolves saving Yellowstone's aspen? A landscape-level test of a behaviorally mediated trophic cascade: comment. *Ecology*. 2013; 94(6):1420–5. <https://doi.org/10.1890/11-0063.1> PMID: 23923505
101. Beschta R, Eisenberg C, Laundre J, Ripple W, Rooney T. Predation risk, elk, and aspen: comment. *Ecology*. 2014; 95(9):2669–71.
102. Ford AT, Goheen JR. Trophic cascades by large carnivores: A case for strong inference and mechanism. Vol. 30, *Trends in Ecology and Evolution*. 2015. p. 725–35. <https://doi.org/10.1016/j.tree.2015.09.012> PMID: 26498385
103. Jorgensen CF, Powell LA, Lusk JJ, Bishop AA, Fontaine JJ. Assessing landscape constraints on species abundance: Does the neighborhood limit species response to local habitat conservation programs? *PLoS One*. 2014; 9(6).
104. Kittle AM, Fryxell JM, Desy GE, Hamr J. The scale-dependent impact of wolf predation risk on resource selection by three sympatric ungulates. *Oecologia*. 2008; 157(1):163–75. <https://doi.org/10.1007/s00442-008-1051-9> PMID: 18481095
105. Lone K, Loe LE, Gobakken T, Linnell JDC, Odden J, Remmen J, et al. Living and dying in a multi-predator landscape of fear: Roe deer are squeezed by contrasting pattern of predation risk imposed by lynx and humans. *Oikos*. 2014; 123(6):641–51.