

1-1-1907

Miller's Orlando city directory

Clyde R. Miller

Find similar works at: <https://stars.library.ucf.edu/cfm-texts>
University of Central Florida Libraries <http://library.ucf.edu>

This Book is brought to you for free and open access by the Central Florida Memory at STARS. It has been accepted for inclusion in Text Materials of Central Florida by an authorized administrator of STARS. For more information, please contact STARS@ucf.edu.

Recommended Citation

Miller, Clyde R., "Miller's Orlando city directory" (1907). *Text Materials of Central Florida*. 121.
<https://stars.library.ucf.edu/cfm-texts/121>

ORLANDO

(FLORIDA.)

CITY DIRECTORY,

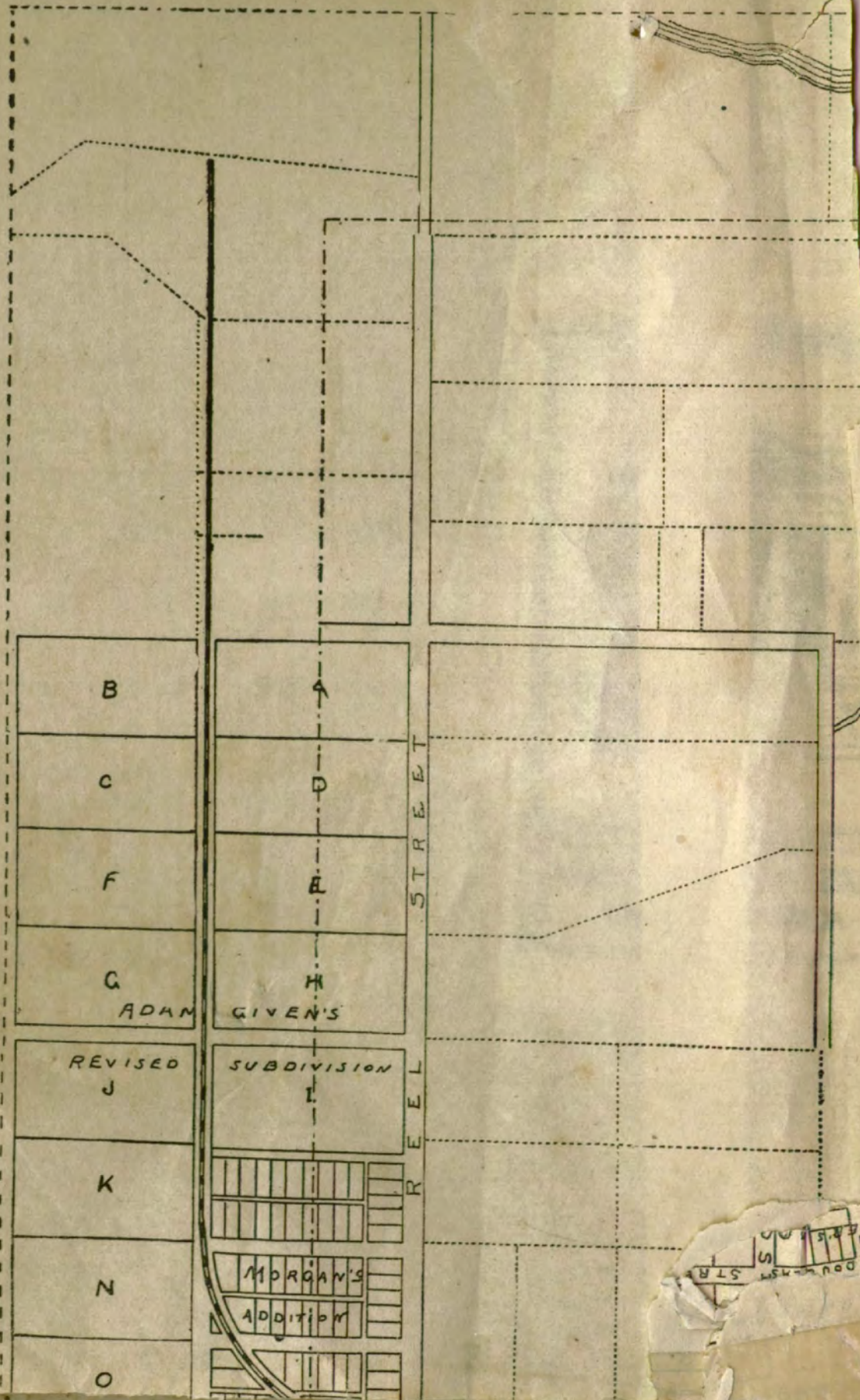
FEBRUARY, 1907.

DUNCAN C. PELL
REAL ESTATE BROKER,
ORLANDO, FLA.

Round Timber, Mill Sites,
 Building Sites, Orange Groves,
Furnished and Unfurnished Houses.
Altamonte Springs, Ocoee and Orlando Properties.

Office, Southeast Cor. San Juan Hotel.

Telephone 300.



105

R
E
E
L
S
T
R
E
E
T

B

A

C

D

F

E

G

H

ADAM

GIVEN'S

REVISED

J

SUBDIVISION

I

K

N

O

MORGAN'S

ADDITION

PLAN
DOUGLASS
STREET

MILLER'S
ORLANDO CITY
DIRECTORY,
FEBRUARY, 1907.

Embracing a complete Resident and Business Directory, with much other useful and interesting information of the City of Orlando, Florida.

COMPILED AND EDITED BY
CLYDE R. MILLER, Orlando, Florida.

PRICE, TWO DOLLARS

Fla
Cal -

17.5-9

State Bank of Orlando

⁺ Orlando, Fla - *Directors*

Incorporated 1893.

Excellentlly Equipped!

Conservatively Managed!

*We offer Convenience, Safety, Promptness, and
Liberality, to all the Patrons of this Bank.*



*Accounts of Individuals,
Firms and Corporations Solicited.*



LOUIS C. MASSEY, President.

WALTER A. SMITH, Cashier.

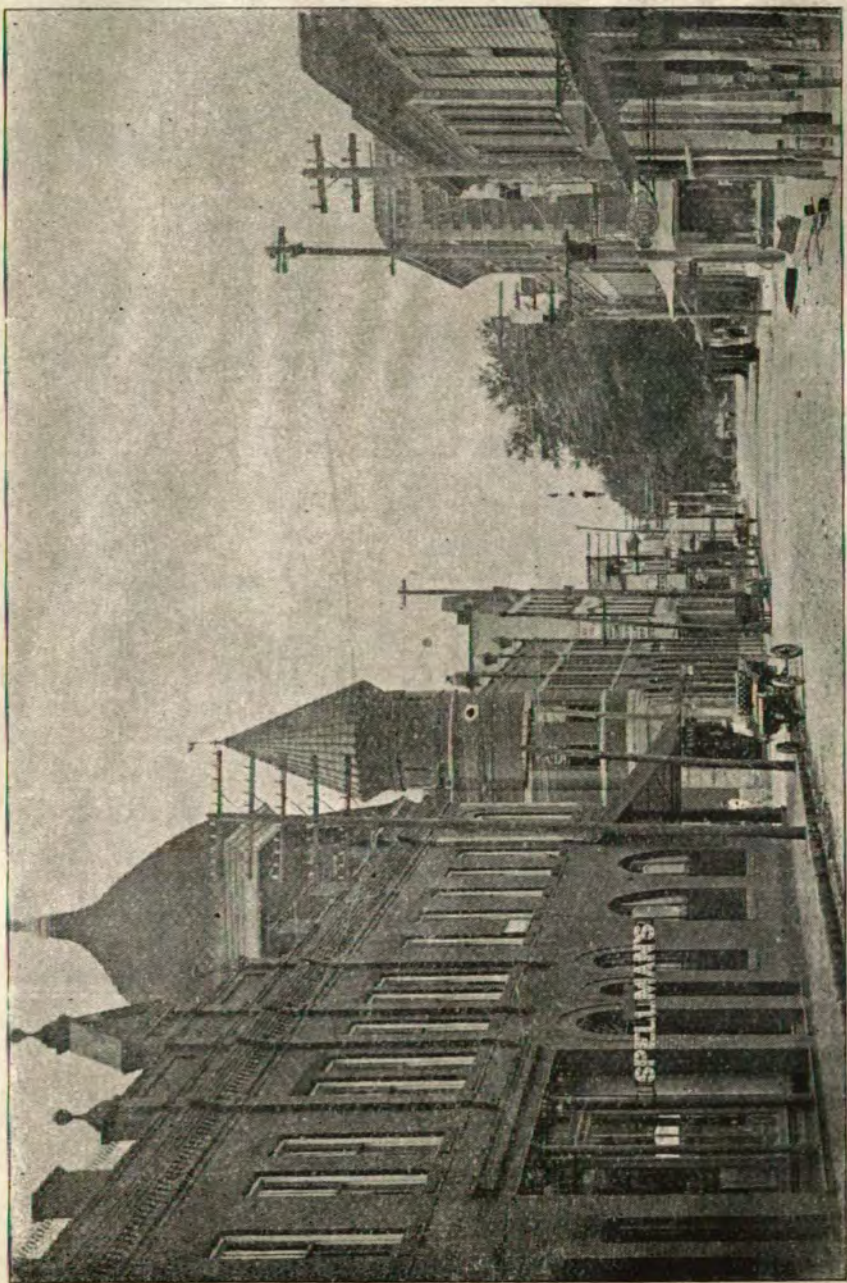
JOSEPH BUMBY,

Agricultural Implements,
Paints, Oils and Hardware,
Doors, Sash and Blinds,
Harness and Saddlery,
Ammunition and and fishing tackle

Orlando,

- - -

Florida.



PINE STREET, LOOKING WEST.



ORANGE AVENUE, LOOKING NORTH



ON LAKE LUCERNE,

1907
CASE



SAN JUAN GROUNDS AND ROSALIND CLUB HOUSE.

PREFACE.

I, herewith hand to the public my edition of the Orlando City Directory, and do so with the assurance that it will be found correct and comprehensive in every detail, and cannot help but be of great assistance to all, and fill a long felt want, being the first directory since 1898, and the most complete of its kind ever published for this city.

It embraces a complete list of all permanent residents, and a classified list of all of the business houses of the city, together with brief sketches, and full information on matters of interest to the public of Orlando, and elsewhere. It includes also a late map of the city.

I feel sure that this issue will be appreciated by the people, and in conclusion wish to thank all for any aid they may have rendered me in editing this book, and tender my acknowledgements, and most sincere appreciation to patrons who have been instrumental in making the issue a successful one.

Yours very truly,

CLYDE R. MILLER.

February 15, 1907.

152308/

PRINCIPAL POINTS.

Their Distance and Fare From Orlando.

TO	Distance.	Fare.	Population.
Live Oak	224	\$5 50	7,200
Lake City	202	4 85	6,509
Monticello	286	7 35	1,000
Tallahassee	308	8 00	3,311
Orange City	35	1 05	350
DeLand	45	1 35	1,496
Palatka	93	2 80	3,950
Tampa	93	2 70	22,823
Jacksonville	147	4 30	35,301
Fernandina	209	5 40	4,959
St. Augustine	121	3 65	5,121
Ormond	83	2 50	689
Daytona	77	2 30	2,199
Titusville	70	2 10	948
Rockledge	92	2 75	350
Palm Beach	217	6 50	1,500
Kissimmee	17	50	1,530
Winter Haven	50	1 50	375
Bartow	62	1 85	1,950
Fort Mead	84	2 50	322
Arcadia	122	3 65	1,557
Fort Meyers	175	5 25	1,425
Sandford	23	70	1,721
Lakeland	60	1 80	3,299
St. Petersburg	180	5 40	2,316
Brooksville	110	3 30	709
Leesburg	42	1 25	844
Cedar Keys	195	5 15	1,085
Ocala	79	2 25	4,493
Miami	303	8 45	6,531
Fort White	150	4 50	459
Orlando	5,463

A BRIEF SKETCH OF ORLANDO.

Population 5463.

The City of Thirteen Lakes, in the County of One Thousand Lakes.

Orlando, the county seat of Orange County, is situated not far from the central portion of the Florida peninsula, on an elevation of land well drained, and in a most healthful region, being approximately 118 feet above the sea level. It is thirty-five miles from the Atlantic Ocean, and seventy miles from the Gulf of Mexico. 147 miles South of Jacksonville and 90 miles north of Tampa, on the line of the Atlantic Coast Line and Seaboard Air Line Railways.

It is a cosmopolitan city of many resources, and attractions. The winters are warmer than in any other portion of the same latitude, resulting in a delightful climate that any one can enjoy with benefit. It abounds with many beautiful lakes, there being thirteen within the city limits. The city water has become famous for its purity, chemical analysis pronouncing it first in rank of purity out of some 159 tests of water from all over the United States.

It is in the midst of the orange and fruit growing belt of the State.

As a commercial center Orlando is by no means lacking, and she boasts of many manufactories. As a winter resort this city has been recognized all over the world, as foremost, thousands of tourists flocking to her gates yearly to enjoy the invigorating and health giving climate.

The business portion of the city is of brick. It possesses well kept paved streets, and sidewalks. It is second to none of the cities in the State in the matter of up to date, and well attended churches, schools, and colleges.

The social features of the town are far above the average, there being many social organizations, lodges, places of amusement, etc.

To sum it all up, the entire atmosphere savors of popularity, and unlimited growth.

Orange County Buildings, and Officers.

County Court House Building, on the corner of Central Avenue and Main St.
County Jail, corner of Orange Avenue and Washington St.

Representatives in General Assembly—B. C. Abernethy and Geo. W. Crawford.

County Judge—Wm. Martin.

County Treasurer—J. H. Sadler.

County Tax Collector—W. E. Martin; Clerk, J. P. Cawood.

Tax Assessor—Samuel A. Robinson.

County Sheriff—J. H. Vick.

Deputy Sheriff—J. A. Kirkwood.

Justice of the Peace—John J. Lee.

Clerk of the Circuit Court—B. M. Robinson; Deputies, Miss Mary Howard and A. B. Johnson.

Judge of Court of Criminal Record—J. D. Beggs.

Clerk of Court of Criminal Record—L. Wichtendahl.

Superintendent of Public Instruction—W. B. Lynch.

County Board of Public Instruction—S. E. Ives, District No. 1; R. W. Lawton, District No. 2; H. H. Witherington, District No. 3.

County Commissioners—H. H. Chappell, District No. 1; H. K. Fuller, District No. 2; L. W. Tilden, District No. 3; H. H. Dickson, District No. 4; J. H. Lee, District No. 5.

Superintendent of County Home—D. Harris.

Superintendent of Roads and Bridges—A. G. Branham.

Orange County Abstract Company—Wm. Beardall, Mgr.

City Buildings and Officers.

City Building, and Jail, Oak Street, a short extension running from North end of Court Street to Orange Avenue. Fire Station same location.

Mayor—B. Beacham.

Clerk—C. A. Boone.

Marshal and Tax Collector—C. R. Carter.

Officers—C. W. Maltbie and O. N. Larson.

Superintendent Streets and Park Improvements—R. M. Bennett.

Superintendent of Sanitation—John F. Gordon.

Councilmen—David Lockhart, President; M. O. Overstreet, Joseph L. Guernsey, R. W. Hammond, Oscar Isaacson, Seth Woodruff, Wm. Smith.

Committee on Finances—M. O. Overstreet, Chairman; Joseph L. Guernsey, R. W. Hammond.

Committee on Streets and Park Improvement—R. W. Hammond, Chairman; Oscar Isaacson, Joseph L. Guernsey.

Committee on Water and Fire Protection—Joseph L. Guernsey, chairman; M. O. Overstreet, Seth Woodruff.

Committee on Sanitation and Statistics—Wm. Smith, Chairman; M. O. Overstreet, Seth Woodruff.

Committee on Ordinances and Charity—Seth Woodruff, Chairman; Wm. Smith, Oscar Isaacson.

Committee on Cemetery—Oscar Isaacson, Chairman; R. W. Hammond, Wm. Smith.

Chief of Fire Department—W. M. Mathews.

Banks.

Orlando Bank & Trust Company—Southwest corner of Orange Avenue and Pine street. Organized April, 1906. Capital \$50,000. J. D. Beggs, President; M. M. Smith, Vice-President; Thos. Hopkins, Cashier; Directors—J. D. Beggs; M. M. Smith, Thos. Hopkins, M. M. Davis, J. A. Knox, J. B. Magruder, R. W. Hammond.

State Bank of Orlando—Southeast corner of Orange Avenue and Pine street. Incorporated 1893. Capital \$25,000. Louis C. Massey, President; T. Picton Warlow, Vice-President; Walter A. Smith, Cashier; Directors—Louis C. Massey, T. Picton Warlow, Walter A. Smith, Joseph Bumby.

Newspapers and Periodicals.

Reporter-Star—27 East Pine street. Established 1877. Consolidated February 12, 1906. Democratic. Daily and Weekly; weekly edition issued every Friday. Subscription rates, Daily, \$5.00 per year, 10 cents per week. Weekly, \$1.00 per year. C. E. Howard, Editor; W. R. O'Neal, President; M. O. Overstreet, Vice President; N. P. Yowell, Treasurer.

Democrat—Corner of Pine & Main Streets. Established August 2, 1906. Democratic. Weekly; issued every Thursday. Subscription rates 50 cents per year, 25 cents per six months, 5 cents per single copy. J. Holland Starbuck, Editor and Proprietor.

Palm Branch—Established 1898. Monthly; issued the last of every month. Subscription rates 25 cents per year. Issued by the Executive Committee of the South Florida Womans Auxiliary, in the interests of their work. Articles for publication should be sent to Miss E. H. Rand, Longwood, Fla.; Subscriptions to Mrs. A. Haden, Orlando.

Florida Recorder—(colored) 502 Patrick Street. Republican. Weekly. Issued every Thursday. Subscription rates, \$1.00 per year. G. C. Henderson Editor & Proprietor.

Post Office.

Charleston Block, 113 Orange Avenue. Hours, 8 a. m. to 6 p. m. daily. 7:30 a. m. to 8:30 p. m. Sunday. Postmaster, W. R. O'Neal; Clerks—J. A. Arnold, W. C. McLean, Miss Julia S. Pomeroy, John C. McQuarters, Jr., Miss Claudia DeLaney. Carriers—Eldon H. Gore, G. Max Smith, Woodford J. Maxey. Sub-Carrier, M. E. Pugh.

Sorosis Library.

Knox-Bacon Block, 16 East Pine Street. Open Thursdays from 3 to 6 p. m. Saturdays from 10 to 12 a. m. and from 3 to 6 p. m. Librarian, Miss Mollie Ray.

Board of Trade.

This body meets the first Thursday in each month, in the Council Chamber. J. M. Cheney, President; Jos. L. Guernsey, Vice-President; W. R. O'Neal, Secretary and Treasurer.

Lakes Within the City Limits.

Concord, Dot, Leora, Hardeman, Eola, Lucerne, Minnie, Davis, Edith, Sink, Copeland, and two unnamed lakes.

Railroads.

(See local papers for schedules)

Atlantic Coast Line Railway—Passenger Station at the corner of Church street and south Gertrude Avenue. Freight Depot, on south Gertrude Avenue at the foot of Jackson Street.

Seaboard Air Line Railway—Passenger Station at the corner of West Central Avenue and Gertrude. Freight Depot, same location.

Churches.

A cordial invitation extended to all visitors to attend any of these places of worship. Seats free.

First Presbyterian Church—Corner Main and Church Streets. Services every Sunday at 11 a. m. and 7:30 p. m. Sunday School at 9:45 a. m. Young Peoples

Society at 3:30 p. m. Prayer meeting Wednesday at 7:30 p. m. Rev. Coleman O. Groves, Pastor; W. R. O'Neal, Superintendent Sunday School.

First Baptist Church—Cor. Pine and Main Streets. Services every Sunday at 11 a. m. and 7:30 p. m. Sunday School at 9:30 a. m. B. Y. P. U. at 3 p. m. Prayer meeting at 7:30 p. m. every Wednesday. Rev. W. A. Nelson, Pastor, F. M. Baldwin, Superintendent Sunday School.

Catholic Church—Corner of Orange avenue and Robinson street. Mass and sermon at 10 a. m.; Sunday School at 3 p. m.; Rosary and Benediction at 7:30 p. m. Rev. M. Fox, pastor.

Christian and Missionary Alliance—Hall, 26 West Church street. Sunday services 2:30 p. m. Sunday school 3:30 p. m. Gospel Meetings 7:30 p. m. An Evangelistic service in the hall Tuesday 7:30 p. m. Prayer-meeting Thursday at 7:30 p. m.

Methodist Episcopal Church, South—Corner Main and Jackson streets. Services every Sunday at 11 a. m. and 7:30 p. m. Sunday School 9:45 a. m. Prayer-meeting Wednesday at 7:30 p. m. Rev. J. B. Mitchell, pastor; C. E. Howard, Supt. Sunday School.

St. Luke's Cathedral—North Main street, corner of Jefferson. Sunday School at 9:45 a. m. Morning prayer 10:30 a. m. Morning sermon 11 a. m. Evening prayer and sermon 7:30 p. m. Rev. L. A. Spencer, Dean.

Seventh Day Adventist Church—Armory Building, 5 Court street. Services every Sunday.

COLORED CHURCHES.

A. M. E. Church—Corner of Veach and Beggs streets. Services every Sunday at 11 a. m. and 7:30 p. m. Sunday School 9:30 a. m. Endeavor 3 p. m. Class meetings Tuesday evenings at 7:30 p. m. Prayer meeting Thursday at 7:30 p. m. Rev. C. S. Long, Pastor.

Antioch Primitive Baptist Church—Terry street. Services every Sunday at 11 a. m. and 7:30 p. m. Sunday School and mid-week services. Rev. R. Edwards, Pastor.

Ebenezer M. E. Church—Corner Church and Terry streets. Services every Sunday at 11 a. m. and 7:30 p. m. Sunday School and mid-week services. Rev. O. Bartley, Pastor.

Mt. Zion Baptist Church—Corner Veach and Chatham streets. Services every Sunday 11 a. m. and 7:30 p. m. Sunday School and mid-week services. Rev. J. N. Stokes, Pastor.

Primitive Baptist Church—Douglass street. Services every Sunday at 11 a. m. and 7:30 p. m. Sunday School and mid-week services. Rev. D. F. Hall, Pastor.

Saint Johns Baptist Church—South Terry street, between Central and Church. Services every Sunday at 11 a. m. and 7:30 p. m. Sunday school and mid-week services. Rev. H. W. Greetham, (white) Pastor.

Shiloh Baptist Church—Lemon street. Services every Sunday at 11 a. m. and 7:30 p. m. Sunday School and mid-week services. Rev. A. Arnett, Pastor.

Associations, Clubs, Etc.

Young Men's Christian Association—Y. M. C. A. Building, 6 and 12 South Orange avenue. Regular hours from 9 a. m. to 10 p. m. Elegantly appointed reading room, gymnasium, and baths. A cordial invitation is extended to all visiting strangers to visit the rooms, and attend the religious services held Sundays at 4 p. m. Officers: President, N. P. Yowell; Vice-President, L. G. Starbuck; General Secretary, Dr. W. H. Gillette; Treasurer, F. A. Curtis; Recording Secretary, E. H. Gore. Board of Directors consists of the above officers, and Messrs. T. P. Warlow, C. E. Howard, W. T. Sims.

Rosalind Club—Reception day, every Thursday. Business meetings the second Monday in each month. Mrs. H. L. Beeman, President; Miss M. Hart, Vice-President; Miss M. Guernsey, Secretary; Mrs. Geo. R. Newell, Treasurer.

Town Improvement Association—Meetings held in Y. M. C. A. parlor (by courtesy), the first Friday in every month. Mrs. Emilie J. Temple, President; Mrs. H. L. Beeman, Vice-President; Mrs. E. F. Sperry, Secretary; Mrs. W. E. Hudson, Treasurer.

Church Home and Hospital (Episcopalian)—East South street. Home for the aged women and general Hospital. Bishop Wm. Crane Gray, President; Rev. H. W. Greetham, Secretary and Treasurer.

Public Schools and Colleges.

Public Graded and High School—Occupying the block between Jackson and South streets and South Orange avenue and New street. A magnificent new three-story brick building containing twelve recitation rooms, high school, study hall, library, Principal's office, Laboratory Room for the Sciences, and a large Auditorium, all connected with the Principal's office by a system of telephone service; electric lighted; steam heated. All modern sanitary appliances.

The Graded School covers a period of eight years in preparation for High School. The course of study in the High School covers a period of four years in Mathematics, English, and Latin (or German), two and one-half years in Science, including Botany, general and English History, and History of Florida. The High School is affiliated with the following well known institutions: Stetson University, DeLand, Fla.; University of Florida, Gainesville, Fla.; State College for Women, Tallahassee, Fla.; Rollins College, Winter Park, Fla.; Washington and Lee University, Lexington, Va.; University of Georgia, Athens, Ga. Prof. F. A. Hathaway, A. B., Superintendent; Prof. J. W. Simmons, A. B., Principal.

Teachers—Miss Claudia S. Miller, B. L.; Miss Eunice DeLaney, Eighth Grade; Miss Mollie Ray, Seventh Grade; Miss Mabel Jameson, Sixth Grade; Miss Bernard Montague, Fifth Grade; Miss Elizabeth Pace, Fourth Grade; Miss Bernice Smith, Third Grade; Mrs. W. C. Johnson, Second Grade; Miss M. B. Howe, First Grade.

Colored School Building—Douglass and Chatham streets. I. H. C. Frazier, Principal.

Cathedral School for Girls.—East Central avenue, (Episcopalian). Consists of Pell-Clarke Hall, Bishop Gray Hall, and Harriet Randolph Parkhill Hall. A preparatory school for girls from the ages of ten years and upward. This school consists of three departments, viz: Primary (4 grades), Preparatory (3 grades), and Academic (3 grades). Deaconess Parkhill, Principal; Miss Annie Taylor, Associate Principal; Mrs. D. B. Manley, Matron; Miss A. C. Moore, Miss Mary R. Green, and Miss Rosa A. Wood as teachers.

St. Johns Academy (colored)—South Terry, between Central and Church streets. Protestant Episcopal, Co-educational. Industrial. Bishop Wm. Crane Gray, in charge.

Rollins College—At Winter Park, 4 miles from Orlando. One of the best and most thoroughly equipped co-educational colleges in the South. William F. Blackman, Ph.D., President.

St. Joseph Academy (Catholic)—Corner of East Robinson avenue and Main streets. Sisters: Agatha, Gertrude, Cecelia, Dominic, and Gerard. Rev. M. Fox in charge.

Trustees, Special Tax District, Orlando—W. R. O'Neal, Chairman; N. P. Yowell, Secretary and Treasurer; J. Horace, Smith, M. D.

Amusements.

Opera House—South Court street, G. H. Morrison, Owner and Manager. An excellent series of performances. See the local papers for the regular announcements.

Orlando Amusement Company (Skating Rink)—South Court street. G. H. Morrison, Owner and Manager. Roller skating. See the local papers for open nights and prices.

Polo Grounds—Hopper's Place. Go north on Orange avenue to the city stand pipe and turn East, following the main clay road about $2\frac{1}{2}$ miles to reach the grounds. Games played every week during the winter season. See local papers for announcements.

Lodges.

I. O. O. F.

Orlando Lodge No. 20—Meets every Monday evening in their hall at 3 South Orange avenue. A. P. Russell, N. G.; P. F. Laubach, Secretary.

Seminole Encampment No. 13—Meets the first and third Thursdays of every

month at their hall, 3 Orange avenue. F. L. Helm, C. P.; P. F. Laubach, Scribe.

Orlando Rebekah No. 12—Meets every Tuesday in their hall at 3 South Orange avenue. Mrs. Chas. Phillip, N. G.; Mrs. J. F. Dale, Secretary.

INDEPENDENT ORDER OF RED MEN.

Econiockhatchie Tribe No. 23—Meets the second and fourth **Thursdays** of every month, in the Kuhl DeLaney Hall, corner East Pine and Main streets. J. T. Dale, Scham; P. F. Laubach, C. of R.

KNIGHT TEMPLARS.

Olivet Commandery No. 4.—Meets the second and fourth **Thursdays**, in their hall, at 10 West Pine street, at 7:30 p. m. J. E. Terwilleger, E. C.; G. E. McCulloch, Recorder.

KNIGHTS OF PYTHIAS.

Welcome Lodge No. 9—Meets every Friday evening in their hall at 3 South Orange avenue. M. M. Sharp, C. C.; Geo. McCulloch, K. of R. & S.

MASONIC.

Orlando Lodge No. 69.—Meets the Second and Fourth **Tuesdays** of every month, at 7:30 p. m. in their hall, at 10 West Pine street. S. Y. Way, W. M.; Carl Jansen, Secretary.

Eureka Chapter No. 7, R. A. M.—Meets the first and third **Tuesdays** of every month, at 7:30 p. m., in their hall at 10 West Pine street. John C. Jones, H. P.; W. H. Jewell, Secretary.

Orlando Council, U. D. R. & S. M.—Meets the in their hall at 10 West Pine street. W. H. Jewell, T. I. M.; G. E. McCulloch, Secretary.

MODERN MACCABEES.

Orlando Tent No 1142—Meets in their hall at 3 South Orange avenue. W. H. Smith, Commander; E. H. Gore, Record and Finance Keeper.

P. O. S. OF A.

Washington Camp No. 13.—Meets the second and fourth **Wednesdays** of each month in their hall at 3 South Orange ave. Geo. Barker, President; P. F. Lubach, Secretary.

UNITED BROTHERHOOD CARPENTERS AND JOINERS OF AMERICA.

Local Union No. 1765—Meets every Tuesday night in the Kuhl DeLaney Hall, at the corner of East Pine and Main streets. G. L. Stevens, President; James Dykes, Secretary.

WOODMEN OF THE WORLD.

Magnolia Camp No. 4—Meets the first and third **Wednesdays** of every month in their hall, at 3 South Orange ave. John Courthers, C. C.; P. F. Laubach, Clerk.

Streets and How Running.

EAST AND WEST.

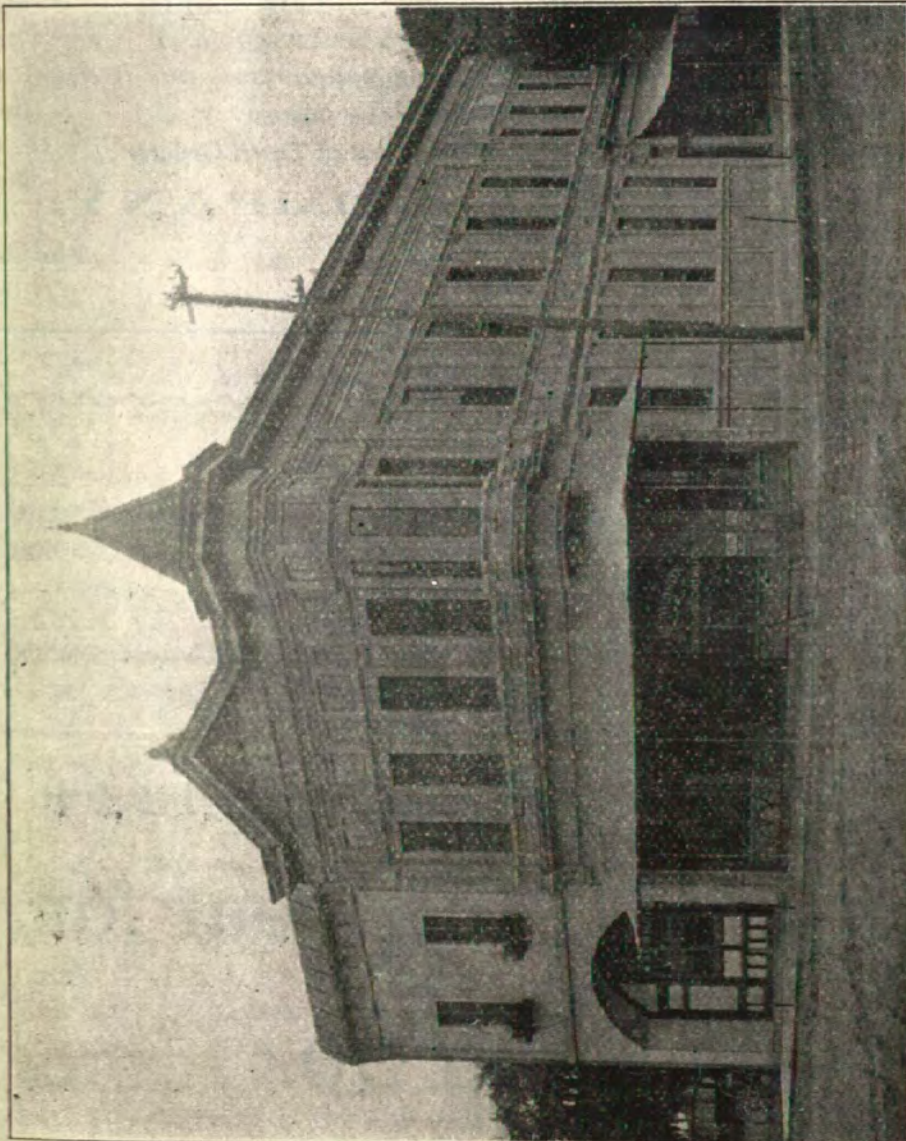
- Clay Road—On Northern city line from Gertrude Ave. to Eastern boundary.
 Sweet Ave.—From Gertrude to Magnolia.
 Concord Ave.—From Gertrude to Silliman.
 Amelia Ave.—From Gertrude to Eastern boundary.
 Livingston Ave.—From Gertrude to eastern boundary.
 Robinson Ave.—From Western boundary to Eastern boundary.
 Jefferson Ave.—From Western boundary to Magnolia.
 Washington Street—From Western boundary to Magnolia.
 Nall Street—From Lake Eola 960 feet East.
 Butts Street—From Bryan to Gertrude.
 Douglass Street—From Parramore to Middle.
 Allen Street—From Bryan to Gertrude.
 Veach Street—From Parramore to Gertrude.
 Hussey Ave.—From Terry to Bryan.
 Central Ave.—From Western boundary to Eastern boundary.
 Pine Street—From point 160 feet from Gertrude to West.
 Patrick Street—From Parramore to Gertrude.
 Lemon Street—From Reel to Gertrude.
 Jackson Street—From New to 2320 feet from Eastern boundary.
 South Street—From Reel to Eastern boundary.
 Holden Street—From Reel to Parramore.
 Irvine Street—From Hughey to South Orange.
 Anderson Street—From DeLaney to Eastern boundary.
 Ponder Street—From Reel to Hughey.
 Canfield Street—From Western Boundary to Division.
 America Street—From Division to Lucerne Circle.
 Elliott Street—From DeLaney to Starkey.
 Palmer Street—From Starkey to Eastern boundary.
 Johns Street—From Hughey to Burke.
 Agnes Street—From DeLaney to Starkey.
 Bay Street—From DeLaney to Starkey.
 Irene Street—From Divison to DeLaney.
 Annie Street—From point 320 feet from Lake Edith to DeLaney.
 Johnson Street—From Lake Davis to Eastern boundary.
 Lucerne Circle—Driveway around Lake Lucerne.

NORTH AND SOUTH.

- Reel Street—From Southern boundary to Northern boundary.

- Jernigan Street—From Canfield to Holden.
 Lee Street—From Canfield to Holden.
 McFaul Street—From Canfield to South.
 Parramore Street—From South boundary to Robinson.
 Lime Street—From South to Church.
 Lincoln Street—From Veach to Robinson.
 Hick Street—From Division to South.
 Chapman Street—From Division to South.
 Terry Street—From South to Robinson.
 Chatham Street—From Veach to Robison.
 Division Street—From South boundary to Robinson.
 Bryan Street—From Central to Robinson.
 Depoline Street—From South to Central.
 Beggs Street—From Veach to Robinson.
 Hughey Street—From South boundary to South.
 Shelby Street—From South to Veach.
 Anno Street—From Veach to Robinson.
 Franklin Street—From Ernestine to America.
 Garland Street—From South to Central.
 Gould Street—From Central to Robinson.
 Gertrude Ave.—From Hughey to Northern boundary.
 Grace Street—From Lucerne Circle to South.
 Boone Street—From Irvine to South.
 Elam Street—From Irene to America.
 Burke Street—From Irene to Lucerne Circle.
 Orange Ave.—From Lucerne Circle to Northern boundary.
 Court Street—From Church to point 160 feet beyond Central.
 Main Street—From Irene to Livingston.
 Magnolia Ave.—From Central to Northern boundary.
 Palmetto Street—From South to Church.
 West Street—From South to Central.
 DeLaney Street—From South boundary to South.
 Liberty Street—From South boundary to Central.
 Margaret Street—From Elliott to Anderson.
 Lake Street—From South to Lake Eola.
 Starkey Ave.—From Agnes to South.
 Euclid Ave.—From Bay to Agnes.
 Osceola Street—From Palmer to Nall.
 East Street—From Palmer to Nall.
 Summerlin Street—From Palmer to South.
 Sillman Street—From Robinson to North boundary.
 Eva Street—From Livingston to North boundary.

- Mills Street—From Robinson to North boundary.
 Conway Ave.—From Johnson to South.
 Carpenter Street—From Central to Robinson.
 Brown Street—From Central to Robinson.
 Myers Street—From Central to Robinson.
 Shine Street.—From Robinson to Amelia.
-

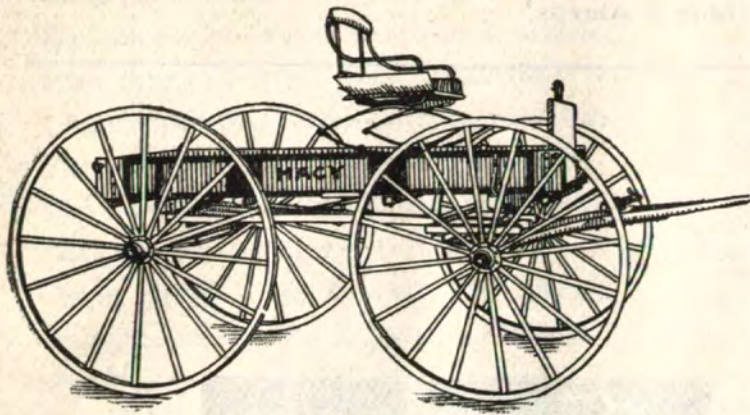


S. R. Hudson's Book, Job and Poster Printing Office,

Corner Main and Pine Streets.

MACY WAGON CO.

Manufacturers of the Celebrated



One and Two
Horse
Macy Wagons,
Turpentine and
Tie
Wagons,
Log Carts.

The Best Quality in Workmanship
and material at prices that are the lowest.
General Repair Work. Special Attention to out of Town Orders.

MACY WAGON COMPANY.

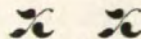
Orlando,

Florida

THE DEMOCRAT.

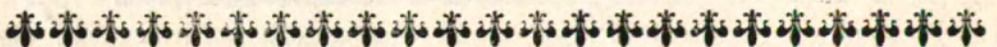
J. HOLLAND STARBUCK, Editor and Proprietor,

Orlando, - - Florida.



The News of the Year for

50 cents 50.



DIRECTORY OF NAMES.

ABBREVIATIONS

agt.....	agent	gen.....	general
ass't.....	assistant	ins.....	insurance
av.....	avenue	l.....	laborer
b.....	boards	mdse.....	merchandise
bkpr.....	bookkeeper	mfg.....	manufacturer
bldg.....	building	N.....	North
clk.....	clerk	pres.....	president
c.....	colored	r.....	resides
com'l trav.....	commercial traveler	rms.....	rooms
com. mer.....	commission merchant	S.....	South
cond.....	conductor	stenog.....	stenographer
cor.....	corner	supt.....	superintendent
dept.....	department	treas.....	treasurer
E.....	East	W.....	West
eng'r.....	engineer	wks.....	works
frt.....	freight	p. o.....	post office

A Wise man or woman, in buying Groceries, will seek the most reliable house to deal with, and that house is DICKSON & IVES.

Abbott, Geo, r 504 S Orange

Abernethy Drug Co, Mrs Moody, owner, 24 S Orange

Abernethy, B C, com'l trav, r 5 S Court, Armory

Achenbach, C V, r 24 W Pine

Acree, A W, clk, r 108 E Church

Adams, Miss G E, manicuring, r 210 S Main

Adams, Georgia, (c) r Veach

Adams, W T, c, barber shop 3 East Pine, r 209 W Church

Adams, Esther, c, resides 209 W Church

Adams, Josie, c, r 209 W Church

Ætna Ins. Co, of Hartford, S Y Way, agt, office 11 S Orange

Aker, Col C F, lawyer, r 301 S Orange

Akers, Dr. E F, dentist, office 2 W Pine, r 301 S Orange

A M E Church, c, cor Veach and Beggs, C S Long, pastor

Agricultural Ins. Co of Watertown, S Y Way, agt, office 11 S Orange

Alexander, H T, works at gas office, r 712 N Orange, "Glendonjoe"

Alexander, Earline, c, r 406 W Robinson

Alleman, S H, r 501 Magnolia

Allen, J F, florist, r 720 Central

Allen, Jamie, c, r 409 Division

Allen, Hiram, c, restaurant, 409 Division

Allison, Mrs Minnie, r 109 E Jackson

American Ins Co, O'Neal, agt, office 115 Orange

R. E. Dann, Rain or Shine Transfer,

Phone 257.

26

ORLANDO CITY DIRECTORY.

- Amold, J A, p. o. clk, r 7 E Robinson
Amold, Miss Margaret, r 7 E Robinson
Anderson, A L, c, 1, r 206 Allen
Anderson, Gotfrey, works Macy Wagon Works, r 308 W Pine
Anderson, Albert, works Macy Wagon Works, r 308 W Pine
Anderson, K W, r 308 W Pine
Anderson, Fred, blacksmith, r 310 Pine
Anderson, J W, clk, r 5 Gould
Anno, J C, clothing, 5 S Orange, rooms 5 S Court, Armory bldg,
Antioch Primitive Baptist Church, c, Terry st, Rev R Edwards, pastor
Arch, Sarah, c, r 612 W Robinson
Arlington House, The, Robt: Parham, prop., 108 W Church
Armory, Orlando Rifles, F. S. T, 5 S Court
Armstrong, W F & Co, undertakers, 15 W Pine.
Armstrong, W F, undertaker, (W F Armstrong & Co) r 404 Magnolia
Arnold, Mary, c, r 601 South
Arrington, Lucinda, c, r 11 Bryan
Arrington, John C, c, painter, r 11 Bryan
A C L R'y, Pullman office, W R O'Neal, agt, 115 S Orange
Atlantic Coast Line, passenger depot, Gertrude and Church
Atlantic Coast Line, freight depot, Gertrude and Jackson
Atlas Ins Co, O'Neal agt, 115 S Orange
Augrit, Jurdan, c, 1, r 109 Middle
Austin, Edna, c, r 207 Chatham
Austin, J M, r 106 Garland
Austin, Miss I L, r 106 Garland
Ayres, Preston, works Electric Light Co, r 110 W Pine

BE sure to see DICKSON & IVES when you are thinking of buying Groceries.

- Baggett, J E, works S. A. L R'y, r 404 W Central
Bailey, Samuel, boards at 416 Boone
Baldwin, F M, bookkeeper, r 11 Gould
Baldwin, Miss Eunice A, student, r 11 Gould
Banks, George, com'l trav, r 205 S Liberty
Banks, R J, c, railroad hand, r 16 Terry
Banks, Lelia A, c, r 16 Terry
Banks, Sallie, c, r 104 Middle
Banks, Wm, c, r 104 Middle
Barber, W F, clk, r 6 Depoline
Barber, Miss Pearl, r 15 N Orange

Use Gas

for Economy and for
Your Comfort's Sake.

THE GAS CO.

- Barber, Miss Evaline, student, r 6 Depoline
Barber, Miss Ethel, r 6 Depoline
Barker, Geo A, painter and decorator, store 110 W Pine, r 412 W Central
Barker, Margaret, 310 Pine
Barker, Miss Brazzie, r 310 Pine
Barker, Ella, r 310 Pine
Barker, Mrs J A, r 310 Pine
Barclay, Robert, carpenter, r 714 W Church
Barkley, Miss Ora, r 714 W Church
Barkley, H F, r 714 W Church
Barksdale, M M, foreman, S. A. L. R'y, r 208 W Central
Barlow, T H, fruit packer, grower, shipper, r 104 Garland
Barlow, A W, clk, r 306 S Main
Barlow, J F, carpenter, r 511 Hughey
Barlow, Mrs G G, r 106 N Orange
Barrows, Joseph, c, l, r 816 Division
Barrows, Mattie, c, r 816 Division
Barros, Joseph, c, l, r 305 Depoline
Barros, Mattie, c, 305 Depoline
Barton, J H, carpenter, r 716 W Church
Barton, Mrs Edith, r 716 W Church
Basden, Henry, c, works at ice factory, r 614 W Robinson
Baskerville, Alfred, c, drayman, r 611 Canfield
Baskerville, Minnie, c, r 611 Canfield
Bass, Everett E, saloon 11 W Church, r 11 W Church
Bass, Mrs J C, restaurant, 40-42 W Church
Battle Creek Sanitarium, treatment rooms, 22 W Pine
Beauchamp, Miss Mary, manicurist, ladies' shampooing, office 2 N
Orange, r 310 N Orange
Baulch, Mr, r 26 W Church
Beard, H S, r 205 N Orange
Beardall, Wm, mgr. County Abstract Office, r 324 Agnes
Beardall, John, student, r 324 Agnes
Beardall, Wm, student, r 324 Agnes
Beardall, Harold, student, r 324 Agnes
Beasley, J W, carpenter, r 210 Garland
Beasley, Mrs Liza, r 204 Shelby
Beatty, Richard, c, l, r Perry street
Beatty, Elizabeth, c, r Perry street
Beck, A L, gen. mgr. Novelty Works, r 309 E Jackson
Beecham, Braxton, mayor, office 2 N Orange, r 109 N Orange
Beecham, Miss Norma, r 109 N Orange

While You are in Florida You
Want Florida Souvenirs.

EVANS,
THE JEWELER.

Beeman H L, prop San Juan Hotel, r 1 N Orange, San Juan Hotel
Beggs, J D, lawyer, Judge Criminal Court, r 502 N Orange
Beggs, Jas D, Jr, student, r 502 N Orange
Beggs & Palmer, (J D Beggs and W L Palmer) attorneys at law,
office 4 W Pine
Beidler, John, r 408 Boone
Beidler, D J, clerk, r 118 E Pine
Bell, Fannie, c, r 106 Chatham
Bell, Katie, c, r 612 W Robinson
Bellamy, J C, r 309 W Pine
Bellamy, Mrs George, dressmaker, r 208 W Pine
Benedict Pineapple Co, Henry Benedict, prop, 502 Grace
Benedict, Henry, orange packing, r 114 E Central
Benifield, Thomas, l, r 402 E Church
Benifield, Eloise, r 402 E Church
Bennett, R M, Supt city streets, r 208 W Church
Bennett, Victor, r 208 W Church
Bennett, B B, c, waiter San Juan Hotel, r 407 W Church
Bennin, H, Jr, bartender, r 604 N Orange
Berkins, Elsie, c, r 506 Veach
Berlack, W B, c, postal clerk, r 735 W Robinson
Berlack, M, c, r 735 W Robinson
Berry, H R, carriage maker, r 208 S Main
Berry, H H, carriage shop, 32 E Church, r 208 S Main
Berry, G W, agt Standard Oil Company, r 502 W Central
Berry, Miss Nettie, r 502 W Central
Bickford, Nathan A, fruitgrower, r 15 W Concord
Bickford, Mrs Hanna, r 15 W Concord
Bishop, Maynard, c, janitor, r 610 Veach
Bishop, Fannie, c, r 610 Veach
Bliss, Mrs H F, r 101 Lucerne Circle
Blue Drug Store, drugs, J N McElroy, prop, 119 S Orange
Blum, Theodore, r 402 Ponder
Blum, W W, carpenter, r 402 Ponder
Blyth, Chas O, electrician, r 514 S DeLaney
Boardman, F N, dry goods, shoes, furnishing goods, 106 S Orange,
r 104 S Orange
Bocknis, C J, r 12 W Amelia
Bohlen, Miss Kate, r 209 Garland
Bohlen, Miss Mena, r 209 Garland
Bohlen, Henry, r 209 Garland

Abernethy Drug Co.

PURE DRUGS,
... Competent Service. ...

- Bohlen, Mrs C, r 209 Garland,
Baker, Plese, c, 1, r 111 Middle
Baker, Eliza, c, r 111 Middle
Bonnar, O M, undertaker at E A Heffield's, r 214 W Church
Boone, C A, city clerk, r 12 Irvin
Boone, D J, clk, r 408 Boone
Boone, Miss Grace, teacher, r 12 Irvine
Boone, Cassius, student, r 12 Irvin
Booth, Bethel, r 308 N Main
Boston, Gussie, c, r 514 Patrick
Boston, Dixie, c, r 514 Patrick
Boston, Anderson, c, bartender, r 506 Patrick
Boston, Ida, c, r 506 Patrick
Boston, Victory, c, r 516 Division
Bosworth, H M, r 413 S Orange
Bourne, Harold, orange grower, r 103 E Pine
Bowen, N H, carpenter, r 305 Garland
Bowsher, A G, carpenter, r 14 W Concord
Bracht, Miss Eugenia, r 103 N Orange
Bradford, Mrs Effie, r 307 W Pine
Bradford, H, Cash Meat Market, 7 E Pine, r 307 W Pine
Branch, Will S, piano tuner, r 321 N Orange
Branch, Payson L, clk, r 321 N Orange
Branch, W S, book store, 14 S Orange, r 321 N Orange
Branham, A G, Supt County Roads, r 404 Lucerne Circle
Branham, Miss Mary, student, r 404 Lucerne Circle
Branham, A G, Jr, student, r 404 Lucerne Circle
Brannon, T C, conductor S A L R'y, r 17 W Washington
Brennan, Miss Ruth, r 207 Irvine
Brennan, John T, works Gas Company, r 207 Irvine
Briggs, Miss Mabel, r 315 Magnolia, "Eola Cottage"
Briggs, Mrs Anna L, r 315 Magnolia, "Eola Cottage"
Brigham, Mrs L F, bookstore 110 S Orange, r 102 E Jefferson
Britton, Edna, c, r 110 Chatham
Britton, Francis, c, r 110 Chatham
Brodwater, Chas M, salesman, r 310 N Orange
Brodwater, Thomas B, clk, r 310 N Orange
Brooks, Bessie, c, r 610 W Church
Brooks, A B, c, carpenter, r 403 W Church
Brown, B F, minister, r 419 Magnolia
Brown, Dr P L, r 505 W Central

MERCHANT TAILORING---to be first class
must have the proper Attention. Who is
more fitted to measure your clothing than

D. W. Trumpeller
130 South Orange Ave.

- Brown, T O, (Brown & Lartigue) merchant, r 206 S Liberty
 Brown & Lartigue, gents' furnishing goods, 22 S Orange
 Brown, Winifred, c, bellman San Juan Hotel
 Brown, W C, c, grocery store, 410 W South
 Brown, B M, c, waiter San Juan Hotel, r 407 W Church
 Brown, Francis, c, r 205 Terry
 Brown, Effie L, c, laundress, r 406 Gertrude
 Bruce, Rev R J, r 3 Gould
 Bryant, Louis, c, l, r 714 Canfield
 Bryant, Mary, c, r 714 Canfield
 Buckingham, V, r 115 E Pine,
 Buekingham, Miss, 506 S Main,
 Buggs, Wm, c, gas maker, r 204 Bryan
 Bumby, Jos, hardware, building material, store 102, 104, 106 W Church
 Bunch, R L, (Hammond & Bunch Co) r 615 W Central
 Burgess, Mrs Mary, r 204 Shelby
 Burgess, P J, clk, r 102 E Jefferson
 Burk, Wm H, r 18 W Amelia
 Burney, Daphney, c, r 501 Patrick
 Burnham, E L, r 408 Magnolia
 Burnett, Allen B, c, l, r 510 W Church
 Burnett, Betty, c, 510 W Church
 Burnett, Mary, c, r 508 W Church
 Burnett, Ann, c, r 508 W Church
 Butler, Ellen, c, r 605 Douglass
 Butler, W P, c, l, r 602 Reel
 Butler, B B, c, r 602 Reel
 Butt, Edward, confectioner, 108 S Orange, r S Burke
 Butt, A T, (Butt's Candy Store) r 214 E Robinson
 Buxton, J D, r 506 S Main
 Byrd, Jackson, r 105 W Pine
 Byrd, Elizabeth, r 105 W Pine
 Byrd, Geneva, r 105 W Pine
 Byrd, John, boiler maker, r 105 W Pine
 Byrd, C, c, r 204 Bryan
 Byrd, Hattie, c, r 514 Patrick
 Byrd, Mattie, c, r 514 Patrick

Choice Wines you'll say so too
and Liquors after you try

Everett E. Bass,
 11 West Chucch Street

Delicious Always pure **N. J. MERCK.**
 Nunnally's Candies Always fresh The Druggist

COME to see us when you want the best of everything in Groceries.
DICKSON & IVES.

- Cain, J W, (Cain-O'Berry Boiler Co) r 409 Gertrude
 Cain-O'Berry Boiler Co, (J W Cain, pres, J H O'Berry, sec and treas)
 cor Gertrude ave. and Robinson street
 Cain, Lottie, c, r 8 Bryan
 Cain, Samuel, c, r 8 Bryan
 Caldwell, J H, (Novelty Works) r 107 Allen
 Caldwell, Mrs J H, r 107 Allen
 Caldwell, Mrs C V, "The Summerlin," r 106 E Washington
 Campbell, W F, (E G Duckworth & Co) r 303 E Robinson
 Cannada, Miss Lucy, works at White Star Restaurant, r 24 W Pine
 Canty, Ellen, c, r 605 Douglass
 Carey, Gen'l A B, r 1 S Osceola
 Carey, A H, mgr Fertilizer Co, r 10 Gould
 Carlson, John F, r 205 Lemon
 Carlson, Richard, clk, r 205 Lemon
 Carpenter, Mrs R B, r 325 Elliott
 Carpenter, Miss Preston, r 325 Elliott
 Carroll, M F, clk, r 5 W Pine
 Carroll, George, c, cook, r 511 W Church
 Carter, W W, r 109 Irvine
 Carter, Miss Nellie, r 512 Canfield
 Carter, Jack, clk, r 512 Canfield
 Carter, C R, city marshal, r 512 Canfield
 Caruthers, J M, clk, r 212 Garland
 Cash Grocery Co, (Frank X Schuller) 122-124 S Orange
 Cash Market, The, (Bradford & Co) meat market, r 7 E Pine
 Cathedral School for Girls, The, E Central
 Caywood, J P, works at court house, r 807 S DeLaney
 Chance, Miss Lula, r 14 E Church
 Chaires, Clarence, c, 1, r 11 Bryan
 Chapman, Miss Mattie, r 110 Grace
 Chapman, Miss Julia, stenographer, r 110 Grace
 Chapman, Mrs V B, boarding house, r 508 W Central
 Chatman, Virginia, c, 307 W South
 Cheney, Joseph, r 712 N Orange, "Glendonjoe"
 Cheney, Donald, r 712 N Orange, "Glendonjoe"
 Cheney, J M, U S District Attorney, r 712 N Orange, "Glendonjoe"
 Cheney, Miss Glen, r 712 N Orange, "Glendonjoe"

E. G. Duckworth & Co.

FEET FITTERS.

FLORIDA SOUVENIRS

of every description. Elegant tokens
to send home. The price is right.

EVANS**The Jeweler.**

25 So. Orange Ave.

- Christ, Dr C D, physician, office 3 N Orange, r 102 E Jefferson
 Christopher, Morris, blacksmith, shop 6 E Church, r 208 Garland
 Christian and Missionary Alliance, meeting rooms, 26 W Church
 Choate, Miss Laura, trained nurse, r 801 S DeLaney
 Citizens Insurance Co, S G Dolive, agt, office 5 S Orange
 Clark, Capt R M, U S Revenue Cutter Service, r 9 E Livingston
 Clayton, Benj, carpenter, r 401 N Orange
 Clayton, J W, r 401 N Orange
 Cleaver, Miss Amanda, r 111 S Court
 Clouser, M E, dry goods store, 20 S Orange, r S DeLaney
 Cobbs, Cæsar, c, 1, r Veach street
 Cobbs, Maggie, c, r Veach street
 Coe, Fred A, r 415 Sumerlin
 Coe, Miss Alice, r 415 Sumerlin
 Cohoon, Allen, meat packer, r 511 Starkey
 Cohoon, Robert, meat packer, r 511 Starkey
 Coleman, George, c, 1, r 607 Douglass
 Coleman, Henry, c, servant, r 1 S Osceola
 Coleman, Susie, c, r 607 Douglass
 Colyer, J A, c, merchant tailor, 15 W Church, r 502 W Church
 Colyer, Emma, c, r 502 W Church
 Cone, Miss Olive, r 409 Magnolia
 Conner, Wm, c, cook, r 104 Shelby
 Conner, Charity, c, r 104 Shelby
 Conoley, Pullman, works at Reporter-Star, r 708 W Church
 Conoley, Mrs L J, r 708 W Church
 Conroy, Miss Rena, servant, r 115 E Pine
 Cook, M, r 101 N Orange
 Cook, J M, (Cook Automobile & Carriage Co) r 414 Boone
 Cook Automobile & Carriage Co, garage and factory, S Main, (Armo-
 ry Building) and cor Pine
 Cook, Jerry, c, servant, r 15 N Orange
 Cook, Martha, c, r 306 Patrick
 Cook, Noah, c, 1, r 206 Allen
 Cook, Ferby, c, r 206 Allen
 Cook, Maggie, c, r 505 Veach
 Cook, Isaac, c, 1, r 505 Veach
 Cooke, O R, lawyer, r 412 E South
 Cooper, Capt W A, r 103 E Robinson, "The Palms"
 Cooper, Miss Cora, clk, r 212 Garland
 Cooper, A S, painter, r 411 Hughey,

Get a **GAS RANGE** **THE GAS CO**
 and solve the Servant Problem

- Cooper, A S, works Cook Auto Co, r 411 Hughey
 Cooper, Kizzie, c, servant, r 212 E Aurelia
 Copeland, Mrs E L, r 505 S Main
 Cosby, Luther, c, l, r 16 N Parramore
 Cosby, Lena, c, r 16 N Parramore
 Cosby, West, c, drayman, r 18 N Parramore
 Cosby, Julia, c, r 18 N Parramore
 Cotton, Rachel, c, r 310 Patrick
 County jail, W Washington st., cor Orange
 Covington, Malinda, c, r 307 Division
 Covington, W T, c, l, r 307 Division
 Cox, L C, truck garden, r 726 W Church
 Cox, Hattie, c, r 409 W South
 Crawford, Dr Geo C, dentist, office 117 S Orange, r 20 E Pine
 Crawford, John C, c, gardener, r 105 Lucerne Circle
 Crisley, Roy, r S Reel street, limit
 Cromartie, J R, c, l, r 18 Bryan
 Cromartie, Eliza, c, r 18 Bryan
 Crooms, Cora, r 202, Lincoln
 Crooms, Louise, c, r 202 Terry
 Crooms, Alfred, c, r 509 Douglass
 Crooms, Alfreda, c, r 509 Douglass
 Crooms, Moses, Jr, c, l, r 202 Lincoln
 Crooms, Moses, Sr, c, carpenter, r 408 Veach
 Crooms, Daphne, c, r 408 Veach
 Croom, Alfred, c, plasterer, r 209 Line
 Croom, Liza, c, r 209 Line
 Cummins, Miss M E, r 108 S Court
 Curtis, F A, merchant, (Curtis & O'Neal) r 212 S West
 Curtis & O'Neal, insurance, loans, office 115 S Orange
 Curtis & O'Neal, stationers, booksellers, etc., 115 S Orange

DON'T forget that the oldest and most reliable Grocery firm in the town is DICKSON & IVES.

- Dade, W A, r 307 E Robinson
 Dallas, Louisa, c, r Patrick street
 Dann, Mrs P J, r 407 Hughey
 Dann, R E, transfer, office 38 W Church, r 303 W Church
 Dann, W C, carpenter, r 407 Hughey
 Dann, H Carl, gen agt Guaranty Trust Company, r 212 Patrick

GAS!

Always ready
 Always clean
 Never any trouble

THE GAS Co

E. A. Heffield

Funeral Director
Furniture Dealer

Phones { 5
173

34

ORLANDO CITY DIRECTORY

- Daniel, Mrs E A, milliner, 19 W Pine
Daniels, Mrs Minnie, r 33 W Church
Daniels, Mary, c, r 7 Bryan
Daniels, Henry, c, cook, r 7 Bryan
Daniels, Earnest, c, butcher, r 401 W South
Daniels, Beatrice, c, r 401 W South
Daniels, Mrs A R, r 422 Starkey
Daniels, Emma, c, r 404 W South
Darrow, Mrs June, r 506 Magnolia, "The Darrow Cottage"
Davet, Rev J H, r 304 E Central
Davet, E P, student, r 304 E Central
Davis, W M, naval stores, r 112 E Church
Davis, L H, r 109 S Main, "Tremont"
Davis, Mrs M B, r 411 S Main
Davis, Tony, c, driver, r 307 Division
Davis, Lena, c, r 204 Bryan
Davis, John, c, gas maker, r 204 Bryan
Davids, C B, r 33 E Pine
Davids, Chas H, student, r 33 E Pine
Davis, Geo H, c, barber shop 6 W Church, r 308 Patrick
Davis, Henry, c, barber, r 406 Gertrude
Davis, Rachel, c, r 14 Terry
Davis, Maggie E, c, r 308 Patrick
Dawson, J, com'l trav, r 202 W Central
Dean, Tom, c, porter at San Juan Hotel
Dean, B L, Sr, cik, r 306 Ponder
Dean, Wm, mechanic, r 207 Shelby
Dededrick, Miss Annie V, student, r 212 E Amelia
DeJournette, J R, r 410 S Main
DeLaney, Miss Alma, student, r 407 S Main
DeLaney, Miss Claude, post office clerk, r 407 S Main
DeLaney, Miss Ethel, r 407 S Main
DeLaney, Miss Eunice, teacher, r 407 S Main
DeLaney, Mrs M A, r 407 S Main
DeLaney, James, clk, r 407 S Main
Democrat, The, J Holland Starbuck, editor, office cor Pine and Main
Demps, Willis, c, l, r S Parramore, limit
Demps, Levenia, c, r S Parramore, limit
Detwiller, Lucinda, c, r Perry street
Detwiller, Janie, c, r Perry street
Detwiller, Tommy, c, l, r Perry street

N. P. YOWELL

The Big White Store

Where The Ladies Trade

THE BLUE DRUG STORE

Known by every one who desire the best and appreciate the service. Certainly its
the best

ORLANDO CITY DIRECTORY.

35

-
- Detwiller, Alice, c, r 603 South
Detwiller, Lloyd, c, l, r 603 South
Devaugh, R E, c, carpenter, r 204 Terry
Devaugh, Isabella, c, r 204 Terry
Diamond, J D, carpenter, r 209 W Pine
Dick, Mrs R G, milliner, 23 S Orange, r 5 Gould
Dicks, Mrs E M, r 308 N Main
Dickson & Ives, (H H Dickson and S E Ives) grocers, 2 S Orange
Dickson, Miss Ethel, r 414 N Orange
Dickson, Harry, wks Dickson & Ives, r 414 N Orange
Dickson, H H, grocer, (Dickson & Ives) r 414 N Orange
Dickson, Harry, c, plasterer, r rear of 612 Veach
Dickson, Ellen, c, r rear of 612 Veach
Diffenderfer, John, carpenter, r 9 E Robinson
Doan, W A, r 15 E Livingston
Dolive, S G, real estate, insurance, office 5 S Orange, r 7 W Washington
Dolive, Louis, student, r 7 W Washington
Dolive, Mrs Jenkins, student, r 7 W Washington
Dollins, L J, real estate, r 305 S Liberty
Dollins, Thomas A, machinist, r 305 S Liberty
Dollins, Miss Annie Myrtle, student, r 305 S Liberty
Dollins, Hugh A, nurseryman, r 108 Garland
Dollins, Zwingle, r 108 Garland
Dollins, Miss Ethel, r 108 Garland
Douglass Bros, livery, 2 W Church
Douglass, E A, (Douglass Bros Livery Stable) r 501 Hughey
Douglass, A A, c, r 21 Terry
Douglass, J W, (Douglass Bros Livery Stable) r 706 W Central
Douglass, A A, c, upholstery and mattress making at 23 Terry
Douglass, L L, Sr, c, l, r 308 Veach
Douglass, L L, Jr, c, waiter, r 308 Veach
Douglass, Pauline B, c, r 308 Veach
Douglass, Nancy, c, r 308 Veach
Dovell, M O, (Yancey's Meat Market) r 106 Grace
Dow, Chas P, orange buyer, r 301 N Orange
Dow & Company, fruit packers, cor Gertrude and Robinson
Dozier, E J, frt agt S. A. L. Railway, r 307 E Robinson
Dozier, Chas M, embalmer, (W F Armstrong & Co) r 17 W Pine
Drawdy, Miss Aline, r 301 Garland
Drawdy, Mrs Emma C, r 301 Garland
Drawdy, A I, r 26 W Church

John Links
Tailor.

Altering—Repairing **First Class Work.**
Cleaning—Pressing 4 East Church St.

- Drawdy, J H, boiler maker, r 311 W Pine
 Drew, B, r 106 E Washington, "The Summerlin,"
 Driver, H P, manager San Juan Hotel, r 210 N Orange
 Duck, Hattie, c, r 404 Lemon
 Duck, Major, c, driver, r 404 Lemon
 Duckworth, E G, shoe merchant, (E G Duckworth & Co) r 104 E Jackson
 Duckworth, Mrs E C, r 104 E Jackson
 Duckworth & Co, E G, shoes, 18 S Orange
 Dugle, Emma E, c, r 607 South
 Duke, B K, automobile mechanic, r 114 E Pine
 Duke, Mrs M K, r 114 E Pine
 Duncan, Annie, c, r 205 Chatham
 Dunaway, J A, wks at Gas Co, r 405 Hughey
 Dunlap, Jane, c, r 407 W South
 Dwight, Mrs Elizabeth, r 201 S West, "The Keystone"

EVERYBODY wants the very best when buying groceries, and it can be had at DICKSON & IVES.

- Eaves, Mrs Mary, r 109 E Jackson
 Eaves, Miss Mary Louise, r 109 E Jackson
 Ebenezer M E Church, Rev O Bartley, c, pastor, Church and Terry
 Edwards, Rev R H, c, r 414 Veach
 Edwards, Edith, c, r 414 Veach
 Edwards, E I, c, l, r 110 Hawkenstown
 Edwards, Leana, c, r 110 Hawkenstown
 Edwards, Maggie, c, r 310 Patrick
 Eliason, J E, r 107 W Pine
 Else, Miss Gertrude, operator telephone station, r 3 W Pine, 1, 2, Empire Building
 Empie, J L, boat builder's shop, 107 Garland
 Erwin, Wm, r 103 N Orange
 Evans, S T, palmetto factory, orange grower, r 208 E Robinson
 Evans, George, r 208 E Robinson
 Evans, Mrs Josephine, 622 N Orange
 Evans, T H, jeweler, 25 S Orange, r 118 E Pine
 Evans, Mrs J A, r 702 W Church
 Evans, Miss Beulah, clk, r 702 W Church

*For Pure Drugs
and Chemicals,*

Abernethy Drug Co.

ORLANDO CITY DIRECTORY.

37

FOR good, reliable groceries, call on the oldest Grocery house in Orlando, DICKSON & IVES.

Falon, Wm, plasterer, r 103 E Amelia
Farris, R G, r 622 N Orange
Farris, M J, r 622 N Orange
Farris, J E, r 622 N Orange
Faulkender, D D, r Way's Addition
Faulkender, Miss Edith, r Way's Addition
Felter, C E, mechanic, r 405 Starkey
Fenner, A J, machinist, r 108 Garland
Ferguson, Miss Eugenia, r 209 Shelby
Ferguson, Mrs C S, r 209 Shelby
Fernandez, Miss Hallie, r 114 E Pine
Ferris, J, printer, r 508 Starkey
Few, John, c, waiter at San Juan Hotel, r 407 W Church
Fidelity & Casualty Insurance Co, O'Neal, agt, office 115 S Orange
Field, Chas W, supt. Southern Fertilizer Co, r 510 S DeLaney
Field, Geo B, r 510 S DeLaney
Field, Miss Minnie A, r 510 S DeLaney
Field, Archibald R, r 510 S DeLaney
Finley, J B, (J B Finley & Son) painter and decorator, r 806 Center
Finley & Son, J B, sign painters, shop at 32 E Pine
Fish, George, r 1 E Irene
Fish, George, Jr, student, r 1 E Irene
Fisher, Mrs Margaret S, r 309 N Main
Fisher, Ella, c, servant, r 301 Lucerne Circle
Flanagan, Wm T, carpenter, r 15 W Washington
Fleming, Thomas, c, r 611 Veach
Florida Recorder, G C Henderson, c, editor and prop'r, r 502 Patrick
Floyd, Jennie, c, r 608 South
Floyd, Canada, c, l, r 608 South
Floyd, Miss Olive B, r 7 W Livingston
Floyd, Marcus B, student, r 7 W Livingston
Floyd, O B, com'l trav, r 7 W Livingston
Forbes, Edwin, machinist, r 20 Gould
Ford, Esther, c, r 610 Veach
Ford, Willie, c, waiter, r 610 Veach
Forest, Cleveland, clk, r 107 Allen
Foster, Jule, c, butcher, r 511 Church
Foster, Rev R J, r 3 Gould

An Elegant Line of

Cut Glass Ware.

EVANS
The Jeweler

25

Orange Ave.

EVERETT E. BASS

Good Drinks to Drink

Church Street

38

ORLANDO CITY DIRECTORY.

Fox, Alice, c, r 511 W Church
Fox, Rev M, pastor Catholic church, r 205 N Orange
Franklin, John, c, l, r 404 W South
Freas, W B, r 303 E Jackson
Fredrick, Sophia, c, r 411 Veach
French, Miss Bernice, student, r 203 N Main
French, Mrs Mary, r 203 N Main
Frey, Mrs B F, r 408 Boone
Fuller & Giles, (Jno T Fuller and J L Giles) real estate and insurance,
office 123 S Orange
Fuller, John T, (Fuller & Giles) r 701 S DeLaney
Fuller, A Y, r 628 Magnolia
Fullwood, Wm W, boiler maker, r 204 Shelby
Futch, L D, bkpr Orlando Bank & Trust Co, r 308 W Central

GET good goods when you buy something to eat, and get it from
DICKSON & IVES.

Galey, Mrs Margaret, r 412 S Main
Galey, Mrs Mary E, r 412 S Main
Galey, Robert, r 504 E Central
Galey, Miss Anna, r 504 E Central
Galloway, E, c, l, r 305 Depoline
Galloway, Lula, c, r 305 Depoline
Galpin, S J, r 103 E Robinson, "The Palms"
Gantling, N H, c, r 11 Bryan
Gard, Miss Jess, r 1 Gould and Central
Gard, Mrs E E, r 1 Gould and Central
Gas Plant, (Orlando Water & Light Co) W Robinson and Chatham
Gayle, R C, painter, r 404 Ponder
General Accident & Insurance Co of Philadelphia, Chas McEwen, agt,
office 117 S Orange
Genlick, Robert, c, fireman, r 309 Butts
Genlick, Malana, c, r 309 Butts
Georgia Home Insurance Co, S G Dolive, agt, office 5 S Orange
Gerideau, Albert, c, bartender, r 511 W Church
German Alliance Ins Co of New York, S Y Way, agt, office 11 S Orange
Gettier, J W, frt agt Atlantic Coast Line R'y, r 410 N Orange
Gettier, Miss Norma, student, r 410 N Orange
Gibson, Mrs A E, r 325 Agnes
Gibson, Lily, c, r 614 Ponder

THE BATTLE CREEK SANITARIUM Treatment Rooms,

Acute and Chronic Disorders Treated by Rational Methods.

Cook With Gas The Gas Co.

ORLANDO CITY DIRECTORY.

39

- Gilbert, Mrs Sarah, r 9 E Robinson
Giles, LeRoy, student, r 301 Lucerne Circle
Giles, J L, (Fuller & Giles) real estate, r 301 Lucerne Circle
Giles, Miss Anna, student, r 301 Lucerne Circle
Giles, Oscar, wks Gas & Water Co, r 910 S DeLaney
Giles, B H, r 407 S Main
Gillette, Dr W H, gen sec'y Y. M. C. A., r 601 Magnolia
Glens Fall Ins Co, W R O'Neal, agt, office 115 S Orange
Glover, Ary, c, r 515 W Church
Glover, Hassie, c, waiter, r 515 W Church
Gaines, W I, clk, r W Church street, city limit
Gaines, Miss Mary, r W Church street, city limit
Golden, Katie, c, r 409 Division
Goodman, Miss Celia, wks at Mrs Dick's Millinery Shop, r 5 Gould
Goolsby, Mrs Julia L, r 301 Lucerne Circle
Gore, F D, tile mfg, r 215 New
Gore, Mahlon, real estate, office 4 S Orange, r Lucerne Circle
Gore, W E, r 210 W Church
Gore, Earl, student, r 210 W Church
Gore, Eldon H, mail carrier, r 11 W Irene
Gordon, J G, c, prop, Eureka House, r 407 W Church
Gordon, Mattie M, c, r 407 W Church
Granniss, C F, orange grower, r 106 S West
Granniss, Dr H M, r 102 N Main
Grant, T P, r 412 S Main
Gray, Bishop W C, (Missionary Diocese of Southern Fla., Episcopal Church) r 12 N Main
Gray, Miss Emma, r 12 N Main
Green, Miss Mary R, teacher Cathedral School
Green, S J, bartender, r 3 N Orange
Green, Noah, c, l, r 105 Middle
Green, Tennie, c, r 105 Middle
Green, Irene, c, r 105 Middle
Green, W T, c, l, r 514 Ponder
Green, Carrie E, c, r 514 Ponder
Green, Andrew, c, l, r 613 Canfield
Green, Elizabeth, c, r 613 Canfield
Greetham, Mrs Will, r 202 N Orange
Greetham, H W, bkpr, r 202 N Orange
Griffin, J J, r 108 S Main
Griffin, Samuel, land agent, r 10 W Washington

Diamonds & Gems
of rare art

The only complete as-
sortment in the city.

EVANS
The Jeweler.

J. A. Colyer

Merchant Tailor.

Pressing Club \$1.50 a month

- Grist, Fred, wks at South Fla. Foundry and Machine Co, r 510 W Central
 Grist, Miss Harriet, r 510 W Central
 Gross, Edward, r 203 Irene
 Gross, Miss Mina, r 203 Irene
 Grover's Transfer, (J A Grover) hauling, office 15 W Church
 Grover, J A, c, (Grover's Transfer) r 17 Bryan
 Grover, J A c, grocery, r 25 Bryan
 Grover, Mary A, c, r 17 Bryan
 Groves, Rev C O, r 106 E Church
 Guernsey, Jos L, hardware and furniture, store at 129 S Orange, r 413 E Central
 Guernsey, Jos W, bkpr, r 413 E Central
 Guernsey, Miss Mary S, r 413 E Central
 Guernsey, Frank D, clk, r 413 E Central
 Gullede, A E, shoe and harness repair shop at 38 W Church
 Gunning, Anna, servant, r 735 N Orange
 Gunter, H O, plumber, r 33 E Pine
 Gurley, Mary, c, r 601 South
 Gurley, Jeanette, c, r 601 South
 Gwynn, Wyndham, r 3 W Pine, 2nd floor, Empire Block

HAVE you tried DICKSON & IVES for Groceries? If you have not try them at once.

- Haden, A, r 101 E Washington
 Hagin, Annie, c, r 405 Veach
 Hagin, Moses, c, l, r 405 Veach
 Hainer, Miss Emma, r Lucerne Circle
 Haizlip, W T, bkpr, r 401 W Central
 Hall, Henry, c, cook at Spellman's, r 20 Terry
 Hall, Patsy, c, r extreme end of Veach street
 Hall, Rev D F, c, r extreme end of Veach street
 Hall, J R, r 305 W Church
 Hall, W O, r 305 W Church
 Hall, Dr F S, r 902 S Hughey
 Hall, Isah, driver Orlando Steam Bakery, r 604 E Anderson
 Hamburg-Bremen Insurance Co, O'Neal, agt, office 115 S Orange
 Hamilton, Miss Annie, r 305 W Central
 Hamilton, Miss Jessie, r 110 W Pine
 Hamilton, Miss Nettie, r 110 W Pine

Cakes The more you eat
 The more you want

Orlando Steam Bakery,
 C. T. HUNGERFORD.

Prescriptions
Carefully
Compounded

N. J. MERCK
The Druggist.

ORLANDO CITY DIRECTORY.

41

- Hamilton, Miss N E, dressmaker, residence and shop at 21 N Orange
Hamilton, Mrs A A, dressmaking, r 110 W Pine
Hamilton, Virginia, c, r 105 Hawkinstown
Hammond, Richard T, clk, r 729 W Central
Hammond, Jas W, clk, r 729 W Central
Hammond, R W, (Hammond & Bunch Co) r 729 W Central
Hammond & Bunch Co, dry goods, 105 S Orange
Hammond, W G, manager Lord Grocery Co, r 715 W Central
Hammond, Mrs J H S, r 331 E Robinson
Hand, Correy, clk, r 5 W Pine
Hand, Elijah, furniture and undertaker, store, 7 to 11 W Pine, r 5 N Pine
Hanson, A, shoe repair shop, r 3 E Pine
Harden, Miss May, teacher, r 811 Euclid
Harley, Georgia, c, r 512 Veach
Harley, Hugh, c, l, r 512 Veach
Harley, Will, c, r 612 W Robinson
Harney, Mrs M E, r 1 N Orange, San Juan Hotel
Harper, Dr W M, office and residence 103 E Pine
Harrington, J J, r 412 N Orange
Harrington, Miss Annie C, r 412 N Orange
Harris Sanitarium, The, 6 E Washington
Harris, Dr R L, physician, office W Central, r 15 N Orange
Harris, J B, & Son, c, barbers, shop at 7 S Orange
Harris, Rev C H, c, r rear of 614 Veach
Harris, Lena, c, r 108 Lincoln
Harris, Barbara, c, r 504 Douglass
Harris, Charlie, c, plasterer, r 504 Douglass
Harris, Louise, c, r 406 Gertrude
Harris, J B, c, barber, r 406 Gertrude
Hart, P C, butcher, r 14 Gould
Hart, Miss Margaret, r 406 Magnolia
Hart, A C, commission broker, r 406 Magnolia
Hart, Mrs C E, r 406 Magnolia
Hart, Patient, c, r Veach street
Harvey, John H, ladies' tailor, r 411 N Orange
Hathaway, Prof F A, supt public schools, r 107 E Robinson, "The Palms"
Hawkins, Hunter, c, cigar stand, shop at 16 W Church
Hawkins, Joshua, c, tailor, r 116 Hawkinstown
Hawkins, Emma, c, r 116 Hawkinstown

GAS For Cooking
Heating
And Fuel.

The Gas Co.

- Hawkins, Geo, c, 1, r 1116 Hawkinstown
Hawkins, Polonia, c, r 310 Veach
Hawkins, Edith, c, r 310 Veach
Hawkins, Anna, c, r 310 Veach
Hawkins, A M, c, insurance agt, r 310 Veach
Hazlett, W H, r 616 N Orange
Heath, James, c, r 107 Middle
Heath, Matilda, c, r 107 Middle
Heffield, C D, manager at E A Heffield's, r cor Court and Church,
Lartigue Bldg
Heffield, Minnie T, r cor Court and Church, Lartigue Bldg
Heffield, E A, furniture, funeral director, shop at 21 E Pine and 113
S Court
Heffield, Chas, (E A Heffield's Furniture Store) r 111 S Court
Heil, Christopher, wks at Ice Company's Plant, r Way's Addition
Heizer, Mrs P E, r 413 N Orange
Helms Hardware Co, hardware, 8-12 W Pine
Henry, Estelle, c, r 404 Veach
Henry, Pearl, c, r 404 Veach
Hendry, C W, prop'r Thomas House, r 116 W Church
Hendricks, J T, r 205 N Main
Hendricks, L W, student; r 205 N Main
Hendricks, Miss Ruth, student, r 205 N Main
Henderson, Dr J S, r 108 Lucerne Circle
Henderson, G C, c, editor Florida Recorder, r 504 Patrick
Henderson, M G, c, teacher, r 504 Patrick
Henderson, Ira, r 812 S Main
Herron, Mrs Helen, r 103 E Amelia
Higgins, Laura, c, r 16 Bryan
Hill, Hanna, c, r 511 W Church
Hill, Ola, c, r 210 Line
Hill, Gus, c, fireman at Ice Plant, r 210 Line
Hill, Miss Josephine, r 303 N Orange
Hill, Harvey W, r 303 N Orange
Hill, Annie, c, teacher, r 108 Bryan
Hill, Nelson, c, drayman, r 108 Bryan
Hill, Amanthia, c, r 108 Bryan
Hillmon, Herman, gardener, r 5 E Jackson
Hinchey, W P, wks at Cook Automobile Co, r 206 Irvine
Hinton, Miss Minnie, dressmaker, r 103 W Central
Hoag, H P, transfer, office 130 S Orange, r 403 W Central

**ORLANDO BANK &
TRUST CO.**

4 per cent

Interest on Saving Accounts

- Hocquard, Louis, prop'r San Juan Barber Shop, barber, r 12 W Central
 Hodges, C J, moulder, r 402 W Central
 Hodgman, Miss Winifred, r 602 Starkey
 Hodgman, Chas, plasterer, r 602 Starkey
 Holbert, Dr J F, doctor, r 408 S Main
 Holden, E M, steam laundry, r 303 W Central
 Holden, W H, r 606 W Central
 Holden, Miss Kathline, r 606 W Central
 Holden, W D, real estate, office 3 S Orange, r 606 W Central
 Holden, A L, boiler maker, r 217 New
 Holland, R L, carriage factory at 28-30 W Pine, r 207 W Central
 Holtsclaw, C E, r 203 W Ernestine
 Hopkins, Mrs Ella, r 9 W Robinson
 Hopkins, Thomas K, cashier Orlando Bank & Trust Co, r N Magnolia,
 at "The Wyoming"
 Hopkins, A T, c, shoemaker, r 516 Patrick
 Hopkins, M A, c, r 516 Patrick
 Hopkins, A T, c, shoe repairing, shop at 14 W Church
 Horn, Paul A, r 6 Gould
 Horn, Miss Loulie, r 6 Gould
 Horn, L C, contractor and builder, r 6 Gould
 Horner, J T, boarding house, "The Pines," r 103 N Orange
 Hoskins, T E F, truck gardening, r 809 Euclid
 Hotaling, E R, mason, r 309 N Main
 Hotchkiss, Mrs Mary, r 415 Magnolia
 Hovermale, Miss Dora, r 8 E Jefferson
 Howard, Miss Florence L, r 303 E Robinson
 Howard, Miss Mariana, r 303 E Robinson
 Howard, W H, r 303 E Robinson
 Howard, C E, photographer, also editor Reporter-Star, office 15 S
 Orange, r 215 E Church
 Howard, Miss Florida E, r 215 E Church
 Howe, Stephenson W, State Bank teller, r 405 Central and Lake
 Howe, Robert, r 405 Central and Lake
 Howell, Gussie, c, r 618 South
 Hudson, Capt R M, wks at Gas & Water Co, r 413 W Livingston
 Hudson, S R, printing, office cor Pine and Main, r 602 E Nall
 Hudson, Rachel, c, r 307 W Church
 Hudson, W H, c, l, r 517 Patrick
 Hughey, Mrs E A, r 210 E Jackson
 Hulbert, E C, r 217 S West

If its anything in our line,
I have it.

Evans, Jeweler.

The Blue Book Store, L. F. Brigham

Books, Stationery, Periodicals.

44

ORLANDO CITY DIRECTORY.

Hulett, Earl Carey, clk for Atlantic Coast Line R'y, r 209 S Liberty
Hulett, Mrs Mary C, r 209 S Liberty
Hulett, Chas B, bookkeeper, r 209 S Liberty
Hume, Mrs Rose E, prop'r "The Palms" r 103 E Robinson
Hungerford, C T, restaurant and bakery, at 116 S Orange, r 105 E Robinson
Hunt, Miss Mattie, r 103 Veach
Hunt, J E, r 103 Veach
Hunt, Louis T, r 103 Veach
Hunt, Mrs Eben W, r 606 N Orange
Hunt, Eugene, com'l trav, r 801 S DeLaney
Hunter, Warren, c, servant, r 301 E Livingston
Hupple, Al, blacksmith, r 207 W Pine
Hutches, M D, r 12 E Concord
Hutson, W A, passenger agt S A L R'y, r 7 N Orange, Rock Bldg
Hyer, R L, livery stable at 1 S Orange, r 110 E Jackson
Hyer, E P, (R L Hyer's Livery Stable) r 105 E Jackson
Hyer, Miss Hatabel, r 105 E Jackson
Hyer & Rollins, plumbers, office 10 W Church
Hyers, Frank, contractor and builder, office 4 E Church

IF you have not tried DICKSON & IVES for Groceries try them at once. Everything the best.

Ibs, Mrs Emma, r Lucerne Circle
Insurance Co. of North America, S Y Way, agt, office 11 S Orange
Institute of Electro Mechano Therapy, Dr. Geo Thomas Bennett, supt.
Sanitarium, 37 E Pine, Kuhl DeLaney Block
Irvine, J R, r 28 E Pine
Irvine, M P, plumbing shop at 35 E Pine, r 514 W Central
Isaacson, Oscar, contractor, r 201 E Robinson
Israel, Mary, c, r 312 Allen
Israel, Eddie, c, l, r 312 Allen
Israel, Wm, c, l, r 311 Allen
Israel, Sarah, c, r 311 Allen
Israel, Henry, c, carpenter, r S Terry, between Central and Church
Israel, Annie, c, r S Terry, between Central and Church
Ives, S E, Jr, (Dickson & Ives, grocers), r 415 N Orange
Ives, S E, (Dickson & Ives, grocers), r 1 W Irene
Ives, Miss Eunice, r 1 W Irene
Ives, M B, clk, r 1 W Irene
Ivey, M L, blacksmith, r 305 Shelby

**The Battle Creek Sanitarium
Treatment Rooms.**

Acute and Chronic
Diseases Treated by
Rational Methods

A Complete Assortment
of Toilet Articles

Abernethy Drug Co.

ORLANDO CITY DIRECTORY

45

JUST call and take a look at our display of Fancy Groceries. Every-
thing first-class. **DICKSON & IVES.**

- Jackson, D H, r 308 N Main
Jackson, A P, c, barber shop at 116 S Orange
Jackson, Edw W, c, photographer, studio at 114 S Orange, r 503 W
Church
Jackson, Matilda, c, r 503 W Church
Jackson, Andrew, c, l, r 403 W Church
Jackson, Martha, c, r 403 W Church
Jackson, Mary, c, r 104 Lincoln
Jackson, John, c, fireman, r 104 Lincoln
Jackson, Rosa, c, r 306 Lemon
Jackson, Julia, c, r 501 W South
Jackson, Smith, c, gardener, r 501 W South
James, W J, r 106 N Orange
James, R C, c, r 106 Terry
James, Victoria, c, r 106 Terry
James, Cloe, c, r 618 South
Jansen, Carl, real estate, notary public, office 2 W Pine, in Orlando
Bank & Trust Co's Bldg, r 209 South
Jeannin, L E, supt electrical dept Orlando Water & Light Co, r 510
Starkey
Jefferson, Arnetta, c, r Perry street
Jenkins, Mrs Emma C, r 206 Veach
Jenkins, Mandy, c, r 304 Depoline
Jenlac, James, c, grocery at cor Terry and Veach, r 202 W Robinson
Jenlac, Sallie, c, r 202 W. Robinson
Jernigan, D. E. carpenter, r, 8 Depoline
Jerry, Rose, c, r 506 Ponder
Jewell, W H attorney-at-law, office 23 E. Pine
Jewett, Mary, c, r 106 King
Jewett, D W c, grocery, 12 Bryan, r 106 Terry
Johnson Albert B deputy clerk circuit court r 314 N Main
Johnson, Mrs. W G, teacher, r 415 S Main
Johnson, W P student r 201 N Main
Johnson E H student, r 201 N Main
Johnson, Miss M P r 201 N Main
Johnson, C E So. Fla. Fdy. & Mch. Co. r 201 N Main
Johnson, B B wheelwright, r 304 N Orange
Johnson, M c, r 613 Douglass

COOK THE GAS Co.
With Gas

Johnson, Minnie, c, 508 Patrick
Johnston, Peter V, r 208 E Jackson
Johnston, Miss Della, r 410 5 Main
Jones, S F, r 205 5 West
Jones & Jones, attorneys-at-law, office 23 E Pine
Jones, Joseph, lawyer, (Jones & Jones,) r 112 E Robinson
Jones, J L, lawyer, (Jones & Jones) r 112 E Robinson
Jones, July, c, r 407 W Church
Jones Mabel, c, r 407 W Church
Jones, G J c, carpenter, r 22 Terry
Jones, Clara A, c, r 22 Terry
Jones, Lula, c, r 611 Veach
Jones, Tom, c, r 606 Veach
Jones Pearl, c, r 606 Veach
Jones, Rev. G W, c, r 301 Allen
Jones, Hanna, c, r 301 Allen
Jones, Ben. c, r 608 Reel
Jones, Mary Ann, c, l, r 102 Shelby
Jones, Henry, l, r 102 Shelby
Jones, Mrs. C A, r 106 E Livingston
Jones, Emma, c, dressmaker, r 402 Lemon
Jones, Nixon, c, r 402 Lemon
Jordan & Chett, c, barbers, shop 24 W Church
Jonett, Jas. S, (Anchorage,) r N Orange
Joyce, C A, r 310 E Robinson
Judge Rachael, c, r 105 Terry
Judson, Mrs. L M, r 208 E Robinson
Juillerat, F L, clerk, r 201 W South

KEEP in mind the fact that our deliveries are always prompt. DICKSON & IVES, Grocers.

Kaley, Mrs. J T, r 402 Concord
Kanner, H, dry goods, clothing, shoes, store 103 S Orange r 203 W Pine
Keir, Mrs. Martha, r 103 W Central
Keller, Miss Josephine, r 622 N Orange
Kelly, Mrs. John W. r 605
Kepper, William, clerk, r N Pine
Kilgore S H, r 10 E Jackson
Kilgore, Eleck, moulder, So. Fla. Fdy, r 308 W Central

While You are in Florida You Want Florida Souvenirs. **EVANS,** THE JEWELER.

Gas Arc Lamps

The Only Safe Light

THE GAS CO.

- Kilmer, Dr. W, physician, office Charleston Block, Orange Avenue r
8 W Washington
- Kilmer, Miss. Mae, r 8 N Washington
- Killpatrick, R R, r Way's Addition
- Killpatrick, Robt, l, r Way's Addition
- Killpatrick, Miss Katie, r Way's Addition
- Killpatrick, Nixon, l, r Way's Addition
- Killpatrick, Drayton, l, r Way's Addition
- Kinne, H E, r 208 S Palmetto Ave
- Kinney, W E, painter, r 4 E Church
- Kirkwood Mrs. S R, r 5 W Irene
- Kirkwood, J A, deputy sheriff, r 5 W Irene
- Kirkwood, Miss Mattie, r 5 W Irene
- Kissam, Wm, electrician, r 207 S Liberty
- Kissam, Miss Mary, r 207 S Liberty
- Kissam, Mrs. K, r 207 S Liberty
- Knox, Jas. A, insurance agent, r 106 Lucerne Circle
- Knox, Miss Elizebeth, r 106 Lucerne Circle
- Kuhl-DeLaney, Hall, 3rd floor, 39 E Pine, Kuhl-DeLaney Blk.
- Kuhl, B T, r 202 Irene
- Kuhl, Carl T, r 202 Irene
- Kuhn, J W, carpenter, r 409 S DeLaney

LEST you forget—we say it yet, the best in Groceries at **DICKSON & IVES.**

- Lamb, L, clerk, rooms A C L, depot
- Lambart, R L, dairy, r 811 Euclid Ave
- Lamps, Leonard, c, l, r 501 Division
- Lamps, Wm, c, l, r 501 Division
- Lamps, Mamie, c, r 501 Division
- Lampkin, Ellen, c, r 602 Ponder
- Lampkin, Daniel, c, l, r 602 Ponder
- Landrum, Miss Mollie, r 210 Patrick
- Langenbach, Mrs. M E, 310 W Church
- Langenbach, F, harness shop, store, 30 E Pine
- Laubach, P F, hay, grain, etc, store 34 W church, r 206 E Jackson
- Larson, O N, city police, r 406 W Church
- Larson, Miss Bessie, r 406 W Church
- Larson, Francis, student, r 406 W Church
- Lartigue, Chas, [Brown & Lartigue.] r 418 Boole

Orlando Bank & Trust Co 4 per cent interest
 On Time Certificates
 of Deposit.

- Lasher, Mrs. Ebie, r 415 Magnolia
 Lawrence, Miss Ella J, r 16 E Church
 Lawrence House, hotel, Mrs M Wendeborg, Prop. 101 W Church
 Lawrence, Herbert c. servant, r 301 Lucerne Circle
 Lawton, J B, printer, office 14 E Pine, r 329 E Robinson
 Lawton, Cestia, printer, r 329 E Robinson.
 Lawton, Benj, r 329 Robinson
 Lawton, Miss Rita, r 329 E Robinson
 Leake, Miss Frances, 406 E South
 Leake, Miss Belle, r 406 E South
 Leake, Olin W. grocery, r 406 E South
 Leake, Harrison, clerk, r 735 W Central
 Leake, Miss Julia, r 735 W Central
 Lee, Mrs. S M, r 513 N Orange
 Lee, C A, r 513 N Orange
 Lee, Capt John, boards Arlington House, 108 W Church
 Lee, Eugene, b, 1, r 24 W Pierce
 Lee, John, c, 1, r 604 Douglass
 Lee, Charlottee, c, r 604 Douglass
 Lee, McCarthy, c, r 604 Douglass
 Leu, Mrs. M N, r 14 Shelby
 Leu, Harry, bookkeeper, r 14 Shelby
 Leonhard, Theodore, r 707 Starkey
 Leonhard, Mrs. Wm G, r 706 Starkey
 Leonhard, Miss Gertrude, r 706 Starkey
 Leonard, Chas c, 1, r Jonestown
 Lewis, Dr, physician, office Central Avenue, opposite San Juan
 Lewis, N L, commission merchant r "The Darrow Cottage" 506 Magnolia
 Lewis, Jas, c, butcher, r 506 Ponder
 Lewter, F A, "Standard" poultry farm, r 735 N Orange
 Likins, Dr O P, optical parlor, 107 Charleston Block, Orange Ave, r 205 S Liberty
 Likins, Mrs, studio, voice culture, piano forte, 107 Charleston Block, r 205 S Liberty
 Lillvik, Andrew, carpenter, r 310 W Church
 Limerick, Mrs. M E, r 206 W Central
 Limbric, Rev Z D, c, r 808 Reel
 Limbric, B E, c, r 608 Reel
 Lindsey, J O, carpenter, r 206 Shelby
 Lisbon, Alec, c, waiter, San Juan, r 407 W Church

Everything the heart could desire. Costs
 no more than your pocket can afford.

EVANS The
 Jeweler.
 25 South Orange Ave,

C. E. HOWARD

PHOTOGRAPHIC STUDIO.



Artistic Work

Amateur Supplies.



ORLANDO CITY DIRECTORY.

49

- Links, John, pressing and cleaning, store 4 E Church
Lloyd, Annie, c, r 8 Bryan
Lloyd's Plate Glass Ins Co of N Y, S Y Way agt, office 11 S Orange
Lochart, Mrs Ethel, r 807 S DeLaney
Lochart, Geo E, r 605 N Orange
Lockhart, D, Orlando Novelty Wks, r 301 E Livingston
Lockhart, Miss Corine, student, r 301 E Livingston
Lockhart, Miss Dolly, student, r 301 E Livingston
Lockhart, Miss Sophie, student, r 301 E Livingston
Lockhart, Miss Davida, student, r 301 E Livingston
Lockhart, Miss Helen, r 301 E Livingston
Lockhart, Miss Ruth, r 301 E Livingston
Lockhart, Raymond, student, r 301 E Livingston
Lockwood, Mrs Eunice, r 415 Magnolia
Lockwood, J W, 210 S Main
Logan, R W, carpenter, r 106 Anno
Lonberger, Mrs M E, r 306 S Main
London Assurance Co, W R O'Neal, agt, office 115 Orange
London & Lancashire Ins Co, W R O'Neal, agt, office 115 Orange
Long, B, real estate, office 116 S Orange
Long, A G, carpenter, r 616 W Church
Long, A F, transfer, r 306 W Church
Long, W E, grocer, store 214 W Church, r 212 W Church
Long, Rev C S, c, r 312 Veach
Long, L B, Helms Hdw Co, r 502 Hughey
Long, Baxter, clerk, r 502 Hughey
Lord, Chas, real estate, office 3 S Orange, r 101 Lucerne Circle
Lord Grocery Co, store 109 Orange
Love, J L, Mgr Abernethy Drug Store, r 102 E Jefferson
Love, Ed, c, l, r 509 Douglass
Love, Rosa, c, r 609 Douglass.
Loveless, C L, painter, paper hanger and decorator, store 205 New, r
618 W Church
Love, Mrs J J, r 310 Magnolia
Lucas, Samuel, c, l, r 202 W Robinson
Lumsden, Miss Rosa L, r 20 W Pine
Lumsden, H A, (horse dealer,) r 20 W Pine
Lundgren, August, machinist, r 207 Irvine
Lusader, Mrs Mattie, r 407 Hughey
Lusk, Mrs M, r 208 E Robinson
Lyle, Mrs L A, r 402 Concord
Lynch, Maj W B, supt. pub. instruction, r 418 Boone

Use Gas

for Economy and for
Your Comfort's Sake.

THE GAS CO.

The Blue Drug Store

You Get what You Want.

With the Oldest and
best Standing reputation

50

ORLANDO CITY DIRECTORY.

MANY a person has afterwards regretted that they did not try our brands. DICKSON & IVES.

- MacaCllum, Archibald, attorney at law, r 202 Lucerne Circle, office
107 Charleston blk
- Mack, Peter, grain and feed store, r 10 Depoline
- Mack, Ed, c, watchman, r 508 Patrick
- Mackenzie, Mrs. Opal, r 207 Palmetto
- Macy, Geo. (Macy Wagon Mf'g) r 208 W South
- Macy, Fred, painter at Macy wagon shop, r 204 W South
- Macy Wagon Co, (factory) cor Shelby and South
- Maddox, Dr J F, physician, office 107 Charleston blk Orange ave, r
511 E Anderson
- Magruder, Jas B Jr, student, r 10 W Central
- Magruder, J B, livery stable, r 10 W Central, stable E Pine
- Magruder & Co, J B, livery stable
- Malloy, George, clerk, r 306 W Central
- Maltbie, C W, city police, r 302 Shelby
- Manley, Mrs D B, matron, Cathedral school, Central avenue
- Mann, Harrison, r 406 W Central
- Mann, T A, grocer, store 9 E Pine, r 301 E Jackson
- Mann, I C, pinery r 409 Magnolia
- Maple, A S r 408 S Main
- Marden, Miss Carrie, r 413 Orange
- Margie, Miss Margaret, r 515 East
- Martin, Wm, county judge, office co court house, Main and E Central
r 406 Magnolia ave
- Martin, W E, co tax collector, r 110 Grace
- Martin, Wm, r Rock Bldg 7 N Orange
- Martin, Miss, r Rock Bldg 7 N Orange
- Martin, M, livery stable, stable 8 W Church, r 301 Garland
- Masonic Hall, Orlando Lodge. 10 W Pine
- Masonic Lodge, c, 106 Middle
- Massey, L C, lawyer, (Massey & Warlow,) r 206 W America
- Massey & Warlow, (attorneys-at-law,) office 2nd floor Empire Block
3 W Pine
- Mathers, T J, r 305 W Pine
- Mathes, N J, shoe repairing, store 103 W Church, r 103 W Church
- Mathews, T W, contractor, r 14 E Church
- Mathews, Miss Mary E, r 14 E Church
- Mathews, W M, livery stable, r 212 Orange

FLORIDA SOUVENIRS
of every description. Elegant tokens
to send home. The price is right.

EVANS

The Jeweler.

25 So. Orange Ave.

- Mathews, Walter, student, r 212 Orange
Mathews, Miss Madge, r 212 Orange
Mathews, Miss M V, r 402 America
Mathews, Julia, c, r 309 Division
Mathews, Dave, c, 1, r 309 Division
Mathews, Cornelius, c, 1, r 204 Bryan
Maxey, W J, c, mail carrier, r 24 Bryan
Maxey, Malissa, c, r 24 Bryan
May, R E, r 303 Orange
Mays, Clara, c, r 510 Veach
Mays, Willie, c, 1, r 510 Veach
Mauck, L L, r 406 S Orange
Mauck, Frederick S, student, r 409 Orange
Meisterman, Joseph, r 307 S West
Merck, N J, drugs, store 19 Orange, r 311 E Robinson
Mervitt, Howard, c. barber, r 608 W Church
Mervitt, Annie, c, r 608 W Church
Metcalf, W H, & Co, saloon, 118 S Orange and Annex Saloon 5 and 7
W Church
Metcalf, H W, saloon, W H, Metcalf & Co, boards San Juan Hotel,
N Orange
Meyer, Mrs H, French milliner, r 12 W Central
Miller, Commodore R, M E, Supt gas dept, Orlando Water & Light
Co, r N Orange
Miller, Clyde R, compiler and editor of Orlando city directory, r N
Orange
Miller, A P, prop of "The Wyoming" N Magnolia
Miller, Miss C S, teacher, r 307 E Robinson
Miller, C Dewitt, student, r "The Wyoming" N Magnolia
Miller, Mrs C J, r 219 New
Miller, W P, county surveyor, office 108 S Court
Miller, Lila, c r W Veach
Miller, John, c, 1, W Veach
Miller, John S, c, 1, r 505 Veach
Miller, Ella, c, r 505 Veach
Miller, Preston, c, 1, r 310 Allen
Miller, Ella N, c r 310 Allen
Mills, Rosa, c, r 503 Division
Mimms, M L, c, r Perry
Mitchell, Rev J B, r 12 E Jackson
Mitchell, B J, c, 1, r 703 Center

GAS!

Always ready.
Always clean
Never any trouble

THE GAS CO

Mitchell, Rosa M, c, r 703 Center
Mizell, Mrs, boarding house, r 205 Orange
Modern Electric Studio, B W Macey, studio 203 W South
Molten, Lou, c, r 716 Hughey
Molten, Albert, c, porter, r 716 Hughey
Monroe, Edwin P. r 206 Lucerne Circle
Montague, J R, grocer, r 205 W Church
Moody, Mrs V F, r 102 E Jefferson
Moon, Maria, r 603 South
Mooney, J H, orange grower, r 409 N Orange
Mooney, Mrs L, r 601 N Orange
Moore, Miss A C, teacher, Cathedral school, E Central ave
Moore, David, c, laborer, r 102 Bryan
Moore, Nettie, c, r 102 Bryan
Moore, John Henry, c, laborer, r 102 Bryan
Moran, Miss Katherine, student, r 101 N East
Moran, Miss Virginia, r 101 N East
Moran, Miss Julia, r 101 N East
Morrey, Minnie, c, r 506 Veach
Morris, Mrs E J, r 16 W Central
Morris, Mrs Hortense, r 16 W Central
Mosley, M C, c, waiter, San Juan, r 407 N Church
Mosteller, A J, contractor, r 511 W Central
Mt Zion Baptist church, Veach and Chatham
Munn, H W, carpenter, r 712 W Church
Munroe, Ben, c, driver, r 508 Patrick
Murphy, Mrs Jeannette R, r 401 Concord
Murphy, Miss Eunice, r 401 Concord
Murphy, Hugh W, student, r 401 Concord
Murr, Mrs W E, r W Pine, "The Winsdor"
Musslewhite, J P, turpentine, Macy Wagon Works, r 109 N East
Myer, Mrs J Q, r 23 W Pine, "The Winsdor"
Myers, H B, r 201 S West, the Keystone
Myers, Frank, machinist, r 201 S West, the Keystone
Myers, Miss Mabel, r 201 S West, the Keystone
Myers, Mrs L E, r 804 Division
Myers, R P, r 804 Division
Myers, Miss Nettie, r 804 Division
McAllister, F K, engineer, r 204 W Pine
McBride, J P, r 206 W Church
McBride, Mrs E A, r 217 E Amelia

**The Battle Creek Sanitarium
Treatment Rooms.**

Acute and Chronic
Diseases Treated by
Rational Methods.



- McCanley, J L, engineer S A L Ry, r 107 W Pine
 McClain, Louisa, c, r Lemon
 McCloud, Ruth, c, r 212 Depoline
 McClousky, Miss Mary, r 412 E South
 McCray, Angie, c, r 210 Lime
 McCray, H H, c, teacher, r 210 Lime
 McCulloch, G E, r 5 W Livingston
 McCullough, J H, r 208 E Church
 McCullough, Melson, c, laborer, r 105 Shelby
 McCutcheon, Robt, r 305 W Central
 McDonald, Maud, c, r 14 Bryan
 McDonald, Sallie, c, r 14 Bryan
 McDonnell, J H, r 616 N Orange
 McDowell, Chas, real estate agent, r 709 W Central
 McDowell, Lawrence, student, r 709 W Central
 McDowell, J A, painter, boards at Arlington House, r 108 W Church
 McDowell, E C, painter, r 727 W Church
 McDowell, Miss Lenoir, r 502 Hughey
 McDuffy, Spurgeons, boiler-maker, r 310 Pine
 McElroy, Dr J N, druggist, the Blue Drug Store, r 506 S Orange
 McElroy, Sylvan, r 506 S Orange
 McElroy, Merle, student, r 506 S Orange
 McElwain, C G, r 105 Lucerne Circle
 McElwain, Miss Ruth, student, r 105 Lucerne Circle
 McEwen, Chas, agt Gen'l Acc't and Ins Co of Phila, office 117 Orange
 McEwen, B R, r 731 Church
 McEwan, Dr J S, physician, r 15 N Orange, office Central ave opposite
 San Juan
 McEwen, Miss Ora, r 108 Garland
 McKee, Miss M F, r 413 S Main
 McKee, Miss M C, r 413 S Main
 McKee, Miss S H, r 413 S Main
 McKee, Mrs M C, r 413 S Main
 McKenna, Miss Mary, r 504 S Orange
 McLain, Chas, P O Clerk, r 107 N East
 McLaughlin, M C, c, fireman, r 403 Hawkenstown
 McLaughlin, Lou, c, r 403 Hawkenstown
 McLaughlin, W B, c, l, r 403 Hawkenstown
 McLaughlin, Mamie, c, r 403 Hawkenstown
 McMillan, H E, contractor, r 509 Osceola
 McMillan, Rev Samuel, c, r 608 Veach

Everything the heart could desire. Costs
no more than your pocket can afford.

EVANS

The
Jeweler.

25 South Orange Ave,

H. W. Metcalf Co.,

Orange avenue

{ LIQUORS }

Annex Saloon,

Church street.

54

ORLANDO CITY DIRECTORY.

McMillan, Lucy, c, r 608 Veach
McMillan, Henry, c, l, r 508 Veach
McNeal, M C, c, waiter San Juan, r 507 W Church
McQuaig, C F, real estate, r 723 W Central, office 4 E Church
McQuarters, John, P O Clerk, r 16 E Church

NOWHERE on earth, can fresher, cheaper and better groceries be bought. DICKSON & IVES.

Nash, Jas Alexander, c, gardner, r 504 E Central
Naylor, Mathew, clerk, r 419 Magnolia
Neely, Wm, c, l, r 16 Bryan
Nelson, Dr W A, Baptist church, r 106 E Pine
Nettles, J H, prop'r White Rose saloon, r 112 W Central
Newell, Prof H A, violin teacher, r 215 E Robinson, studio 39 E Pine,
Kuhl-DeLaney bl'd'g
Newell, Miss Mildred, r 215 E Robinson
Newell, Miss Agnes, r 215 E Robinson
Newell, Mrs Geo R, r 323 Agnes
Newkirk, Mrs A F, r 217 E Amelia
Newkirk, Miss Florence A, student, r 217 E Amelia
Newman, Thos, watchman Orlando Novelty Works, r 709 E Anderson
Newman, Wilbur, book-keeper, r 709 E Anderson
New York Underwriters Agency of N Y, S Y Way, agt, office 11 S
Orange
Nicholson, J E, bakery and grocery, r 210 W Ernestine, store 17 W
Church
Nicholson, A M, taxidermist, r 606 Division
Nicholson, Miss Olive, student, r 606 Division
Nixon, Etta, c, r 511 W Church
Nobles, Bud, carpenter, r 310 Pine
Norment, Mrs Howard, r 204 W Central
North British & Mercantile Ins Co, W R O'Neal agt, office 115 Orange
Northern Assurance Company of London, S Y Way, agt, office 11 S
Orange
Norwich Union Assurance Company of Norwich, S Y Way agt, office
11 S Orange
Null, J H, r 308 N Orange
Nuttins, Ralph, works at Gas Co, r 310 Pine

COOK THE GAS Co.
With Gas

E. A. Hefffield

Funeral Director
Furniture Dealer

Phones { 5
173

ORLANDO CITY DIRECTORY.

55

OH! yes, we have it. Always fresh and eatable. DICKSON & IVES.

- Olsten, Herbert, clerk, r 406 W Church
O'Neal, W R, postmaster, (Curtis & O'Neal), r 106 S Liberty
O'Neal, W R, real estate, office 115 Orange
O'Neal, Miss Helen K, r 106 S Liberty
O'Neal, Miss Mabel, student r 106 S Liberty
O'Neil, Miss Esther, r W Robinson
O'Neil, Miss Nellie, stenographer, r 7 W Robinson
O'Neil, Miss Mary compositor, 7 W Robinson
O'Neil, Mrs H C, r 7 W Robinson
O'Neil, James F, r 7 W Robinson
Orange county court house, Main and Central
Orient Ins Co, W R O'Neal agt, office 115 Orange
Orlando Amusement Co and opera house, G H Morrison prop, S Court
Orlando Bank & Trust Co, S Orange and Pine
Orlando Steam Laundry, L S Holden, Prop, 20, 22, 24 E Church
Orlando Water Works & Light Co, office 1 N Orange
Orlando Meat Market, T A Yancey Co, 128 S Orange
Orlando Steam Bakery, C T Hungerford prop, store 116 S Orange
Orlando Bldg Block Co, H A Shreve, pres, T P Warlow, secy, factory
W Livingston and R R
Orlando Novelty Wks and lumber yard, David Lochart prop, A L Beck
Mgr, factory Robinson and Gould
Orlando Telephone Exchange, central office, 3 W Pine Empire Bldg
Orlando Grocery Co, J R Montague prop, grocery, store 15 East Pine
Orr, Rex, r 16 E Pine
Orr, Laura B, r 16 E Pine
Osborn, F B, carpenter, 402 America
Osborn, Mrs S M, r 402 America
Osteen, J W, 112 E Washington
Overstreet Turpentine Co, M O Overstreet, office Orlando Bank &
Trust Co Bldg, 2 W Pine
Overstreet, M O, naval stores and timber, r 5 West St cor Central

Choice Wines you'll say so too
and Liquors after you try

Everett E. Bass,
11 West Church Street

Cook With Gas The Gas Co.

56

ORLANDO CITY DIRECTORY

PERHAPS you are not satisfied with the goods being sent you.
Just try DICKSON & IVES, Grocers.

- Pace, Miss Elizabeth C, teacher, r "The Palms" 103 E Robinson
Packard, Mrs T O, r 518 N Orange
Page, Fannie, r 5 Reel, limit
Page, Charlie, 5 Reel, limit
Painter, E O, Fertilizer Co, Orlando Branch Jax Fla plant, 101 W
Central ave
Palmer, W L, lawyer, (Beggs & Palmer,) r 424 N Orange
Palmer, Jerome, clothes, gents furnisher, store 29 Orange, r 102 E Pine
Paris, B J, c, 1, r 205 Terry
Parish, Chas, c, 1, r 205 Bryan
Parish, Sylvia, c, 205 Bryan
Parker, Ellen, c, r 312 W Robinson
Parker, Hanna, c, 312 W Robinson
Parker, Henry, c, r 312 W Robinson
Parker, Dorothy, c, r 306 Patrick
Parker, Eliza, c, r 306 Patrick
Parkhill, Deaconess, principal Cathedral school, E Central
Parry, Mrs H V, r 520 Canfield
Parry, J R, r 210 Lucerne Circle
Parsons, Mrs R J, r 405 Starkey
Partridge, Miss L E, 412 Boone
Partridge, Mrs G E, clerk, r 412 Boone
Patrick, H N, r 410 Ponder
Patterson, Mrs Jas C, r 5 Lucerne Circle
Patton, H E, plumber, r 5 W Pine
Paul, Miss H T, prop Eola Cottage, r 315 Magnolia
Payne, L L, Gen Mgr Orlando Water & Light Co r 315 Magnolia
Payne, Ellen, c. r 505 Douglass
Peak, Dr R H, physician, r 413 S Main
Pearl Gloss Laundry, E Jump prop, laundry 605 W Central
Pedrick, J M, boiler maker, r 210 S Liberty
Pell, Duncan C, real estate, office 2 N Orange, r N Magnolia, "The
Wyoming"
Penn Mutual Life Ins Co of Phila, S Y Way agt, office 11 S Orange
Pennsylvania Ins Co, W R O'Neal agt, office 115 Orange
Pennington, Mrs Anna J r 119 E Pine
Peoples, Isaac, r 24 W Church
Peoples's Ice & Cold Storage Co, office 1 North Orange

Orlando Bank & Trust Co 4 per cent interest
On Time Certificates
of Deposit.

Branch's Book and Music Store

They Say We Sell Cheaper

And We Do.

ORLANDO CITY DIRECTORY

57

- Perritt, H V, boiler maker, r 206 Garland
Person, Dr W C, physician, office 15 E Church, r 212 S Main
Person, Miss Agnes, r 212 S Main
Person, Miss Willie, student, r 212 S Main
Peters, Mrs J A, r 614 N Church
Peterson, Maggie, c, r 514 W Church
Pheonix, Ins Co, W R O'Neal agt, office 115 Orange
Pheonix Assurance Co of London, S Y Way agt, office 11 S Orange
Phillips, Z, grocer, r 705 W Church
Phillips, steam laundry, r 28 E Pine
Philipson, Geo, painter and decorator, r 24 W Pine
Pierce, Arthur, c, 1, r 404 W South
Pierce, Tony, c, 1, 404 W South
Pinkney, Ebenezer, c, r 602 Reel
Pitman, Gus, c, waiter San Juan, r 407 W Church
Platt, J M, conductor S A L Rwy, r 14 W Washington
Platt, Miss Ruby B, student, r 14 W Washington
Plumer, C V, c, r 506 Ponder
Pomeroy, L H, r 207 S Jackson
Pomeroy, Miss Julia S, postoffice clerk, r 207 E Jackson
Ponder, Mrs J G R, r 15 E Concord
Ponder, L C, r 15 E Concord
Ponder, R C, r 15 E Concord
Poole, Richard W, 305 E Jackson
Pope, Mrs J A, r 210 Shelby
Pope, Edward, clerk, r 210 Shelby
Pope, J M, r 418 S Grace
Porter, Geo, physician, office 4 S Orange, r 106 E Washington, the
"Summerlin"
Porter, W H, engineer, r 307 E Robinson
Porter, Miss Elizabeth, r 106 E Washington, the "Summerlin"
Post, Wm C, broker, r 315 Robinson
Postal Tel and Cable Co, office 121 S Orange
Powell, Mrs Martha, r 210 Shelby
Powers, Louis, c, r 701 W Robinson
Powers, Elvira, c, r 701 W Robinson
Preston, Mrs J N, r 414 S Grace
Preston, Miss Clara, student, r 414 S Grace
Preston, Miss Grace, student, r 414 S Grace
Preston F H, & Robinson, H J, fruit packing house, factory Gertrude
and W Jefferson

For Pure Drugs
and Chemicals,

Abernethy Drug Co.

Price, Carey, c, r W Robinson
Primitive Baptist church, colored, W Douglass
Prince, J M, r 812 Center and Irene
Prince, Mary, c, r 511 W Church
Public school bldg, Jackson and S Orange
Public school building, colored, Douglass and Chatham
Pugh, M E, carpenter, r 506 W Central
Pulley, W E, trader, r 305 W Pine
Putnam, H H, r 628 N Orange
Putnam, Miss Helen S, stenographer, r 628 N Orange

QUEER how some folks will accept spoiled and unsatisfactory goods.
Ours are always fresh. DICKSON & IVES, Grocers.

Queen Ins Co, Oneal, agt, office 115 Orange
Quigg, E A, orange grower, r 505 Hughey
Quiner, John, electrician, r 105 W Church

REMEMBER the place, remember the name. DICKSON & IVES,
Grocers.

Rabun, A C L, express agt, r 210 Orange
Radford, R H, c, waiter, San Juan, r 407 W Church
Rane, Francis, c, r 506 W Robinson
Rane, Adna, c, r W Robinson
Rampke, J D, soda water manufacturer, r 207 Garland
Ratliff, Miss Sarah, teacher, r 103 Veach
Ray Miss Mollie E, r 325 Agnes
Redgrave, A W, engineer, r 209 W Central
Reese, J H, teller, Orlando Bank and Trust, r 508 W Central
Reese, Mary, c, r 401 W South
Reese, Joseph, c, butcher, r 401 W South
Reese, Abraham, c, cook, r 612 E Nall
Reeves, A P, carpenter, r 313 W Central
Reichard, Mrs C C, r 408 Lucerne Circle
Reichard, Miss Mary, r 408 Lucerne Circle
Reid, Amelia, c, r 503 Division
Remington, dressmaking, r 7 N Orange, Rock bldg
Remnant Store, Millholland & Willis, dry goods and notions, store
9 Orange
Reneker, Rev J G, r 602 Hughey

Shoes Mended
Quality of Work Guaranteed
Prices Right

A. T. HOPKINS,
W Church Street

E. G. Duckworth & Co.

FITTERS.

FEET

ORLANDO CITY DIRECTORY

59

- Reporter-Star Pub Co, office and publishing dept, 27 E Pine
Reynolds, Joel, r E Palmer
Rhodes, Betty, c, r 509 W Church
Rhyne, Miss Amanda, dressmaker, r 20 E Pine
Richards, F E, gunsmith, store 10 E Church
Richards, Bertha, col, servant, r 15 N Orange
Richardson, Clara, c, r 613 Canfield
Rickert, Rev A A, r 501 Magnolia
Riddle, Miss Carrie H, r 501 S Main
Rinaldi, J B, fruits, store 19 W Church
Rinaldi, Joe, fruit, store 33 W Church
Rinaldi, Albert, r 502 Starkey
Rivers, Dr J R, c, physician, office 15 W Church
Roberts, H K, r 312 South
Roberson, E W, c, pressing club, r 22 W Church
Robertson, W M, painter, r 202 W America
Robertson, L L, r 202 W America
Robertson, C L, painter, r 202 W America
Robertson, Wm E, painter, r 202 W America
Robertson, H C, clerk, r 110 Grace
Robins, B M, clerk of court, r 301 E Jackson
Robins, Miss Mary, student, r 301 E Jackson
Robins, Miss Fannie, student, r 301 E Jackson
Robins, Randolph, student, r 301 E Jackson
Robinson, Edgar, clerk, r 206 E Jackson
Robinson, T P, photographer, r 310 South, gallery 107 Orange ave,
Charleston block
Robinson, Mrs Norman, r 401 Concord ave
Robinson, Miss Edith U, r 212 E Amelia
Robinson, S A, r 212 E Amelia
Robinson, Miss Claire, r 212 E Amelia
Robinson, L F, r 116 E Pine
Robinson, John, carpenter, r 303 Veach
Robinson, Owen, traveling man, r 4 W Irene
Robinson, C B, lawyer, r 6 E Irene
Robinson, A L, book-keeper, r 6 E Irene
Robinson, Miss Corrine, r 6 E Irene
Robinson, Miss Edith, r 6 E Irene
Robinson, Miss Eloise, student, r 6 E Irene
Robinson, W P, c, l, r 21 Bryan
Robinson, Lula, c, r 21 Bryan

An Elegant Line of

Cut Glass Ware.

EVANS

The Jeweler

25

Orange Ave.

Prescriptions
Carefully
Compounded

N. J. MERCK
The Druggist.

60

ORLANDO CITY DIRECTORY.

Robinson, Phillis, c, r 503 Patrick
Robinson, Peter, c, l, r 820 Division
Robinson, Minda, c, r 820 Division
Robinson, Carey, Lee, c, r 820 Division
Robinson, Katherine, c, r 812 Division
Robinson, James, c, r 812 Division
Robinson, Minnie, c, 106 Chatham
Rock, Chas, bakery and residence, 7 N Orange
Rock, Miss Olga, r Rock Bldg, 7 N Orange
Rock, Miss Bertha, student, r Rock Bldg, 7 N Orange
Rogers, Miss Maud, r 12 Irvine
Rogers, Jas A, blacksmith, r 301 Shelby
Rogers, Mrs A E, r 301 Shelby
Rogers, Annie, c, r 108 Chatham
Rollins, Mrs Harry E, r 28 W Church
Rollins, Mrs Helen A, r 101 E Robinson
Rollins, Harry, barber, shop 112 S Orange
Rollins, F A, plumber, r 706 Center
Rollins, Mrs N B, r 706 Center
Rollins, Mrs M B, r 706 Center
Rooney, T J, janitor school, r 704 Division
Rooney, Miss Rosa, clerk, r 704 Division
Rooney, Hugh, moulder, r 704 Division
Rooney, Arthur, type setter, r 704 Division
Rosalind Club, 11 N Orange
Ross, Francis W, truck gardener, r 205 W Irene
Ross, W A, r 415 Magnolia
Ross, Mrs S A, r 415 Magnolia
Ross, Wm, c, gardener, r 108 Patrick
Routh, Eleck, c, l, r 206 Lincoln
Routh, Maggie, c, r 206 Lincoln
Rowland, John S, grocer, r 512 S DeLaney
Rowland, Mrs C V, r 501 S Main
Rowland, R S, Mdse Broker, office 107 Charleston Block, Orange ave
Royal Ins Co, S G Dolive agt, office 5 Orange
Royal Benefit Society, Orlando Assembly No 88, A M Hawkins Mgt,
c, office 310 Veach
Rush, Dr J D, physician, office 117 Orange, r 416 Boone
Russell, Mack, machinest, Cook's auto shop, r 508 W Central

N. P. Yowell

For
.. High Class ..
.... Ready Made Garments for Ladies

E. A. Hefffield,

Funeral Director and
Furniture Dealer.

Phones
5 and 173

STOP buying where you get unsatisfactory service, and go to
DICKSON & IVES, Grocers.

- Sackett, J H, wks Hungerford's bakery, r 715 W Church
Sales, Sam, c, l, r 307 Depoline
Sales, Julia, c, r 307 Depoline
Samuel, George, c, teamster, r 503 Veach
Samuel, Elenor, c, r 503 Veach
Sanders, Wallace, c, carpenter, r 105 Terry
Sanders, Cinda, c, r 306 Depoline
San Juan Hotel, H L Beeman prop'r, N Orange and Central
San Juan barber-shop, Edward Meyer prop'r, 2 N Orange
Saunders, Capt Chas B, r 308 E Robinson
Saunders, Miss Lizzie E, r 308 E Robinson
Savage, Mary A, c, r 402 Patrick
Savage, Fannie J, c, r 402 Patrick
Sayles, Jerry, c, l, r 107 Middle
Sayles, Hannah, c, r 107 Middle
Sapp, Mary, c, r 608 Veach
Schnarr, J& Co, Mf'g's white fly destroyers, office 36 W Pine
Schnell, Wm, painter, r 206 W Pine
Scott, Rev C J, c, r 207 Chatham
Scott, M, c, r 207 Chatham
Scottish Union and National Ins Co of Edinburgh, S Y Way, agt, of-
fice 11 S Orange
Scruggs, F T, r 1 W Irene
Scruggs, A T, r 520 W Central
Scruggs, Miss Mary, student, r 520 W Central
Schuller, F X, grocer, store Cash Grocery Co, r 518 N Orange
Seaber, Miss Edith, r 107 Allen
S A L Ry, passenger station & freight depot, W Central and Gertrude
S A L Ry shops, Robinson and Lincoln
Sears, Miss Verdie, r 210 Patrick
Seegar, J T, grocer, r 735 W Central, store 3 N Orange
Seventh Day Adventist church, 5 S Court Armory
Sevey, Miss Sadie E, r 420 Starkey
Sevey, E S, transfer, r 420 Starkey
Shainbarger, Jacob, sign painting, bicycles, etc, store 10 E Church
Sharp, M M, works S A L Ry, r 17 W Washington
Shaw, Mrs J E, r 108 E Central
Shepard, S W, tobaccos and fruits, r 106 W Pine, store 120 S Orange

Orlando Bank & Trust Co.

Deposits Insured
Against Loss

GAS For Cooking
Heating
And Fuel.

The Gas Co.

62

ORLANDO CITY DIRECTORY

- Shepard, Mrs Belle C, r 106 E Washington, the Summerlin
Shepard, T J, grocer, r 106 W Pine, store 5 E Pine
Shepard, Miss A H, r 106 W Pine
Sherman, Wm C, jeweler, r 810 S Main, store 11 Orange
Shine, W E, notary public, boards 202 N Orange, office 3 W Pine,
Empire blk 2nd floor
Shine, Miss Liliias, boards-202 N Orange
Shingle, Charlie, c, bartender, r 19 Bryan
Shingle, Hattie, c, r 19 Bryan
Shoats, Betty, c, r 403 Veach
Shoats, Thomas, c, l, r 403 Veach
Shreve, H A, contractor, r 101 Veach
Shiloh Baptist church, colored, Lemon
Shuman, Mrs M S, r 16 E Church
Shuman, Miss Edith, r 16 E Church
Simms, trav, boards 106 E Washington, the "Summerlin"
Simmons, Prof John W, principal public school, boards 103 E Robin-
son, the "Palms"
Simmons, Ellenore, c, r 610 W Church
Simmons, Ed, c, l, r 610 W Church
Singer Sewing Machine Co, J E Sumner manager, store 132 S Orange
St Joseph's Academy, Sister Agatha, Sister Gertrude, Sister Cecelia,
Sister, Dominic, E Robinson
St Joseph's Academy, Gerard, sister, E Robinson
Slemons, Phil T, r 402 N Orange
Slemons, W M, dry goods, store 111 Orange, r W Church
Sloan, Mrs T M, r 21 S Orange
Smith, Aubrey, dairyman, r 804 W Central
Smith, Rev E Lee, r 313 W Central
Smith, Wm, foreman So Fla, Fdy and Machine Co, r 309 W Central
Smith, Miss Anna M, student, r 309 W Central
Smith, Miss Edna May, student, r 309 W Central
Smith, William, painter, r 210 W Central
Smith, Miss Sallie, r 210 W Central
Smith, Frank, delivery clerk, So Ex Co, rooms at A C L depot
Smith, Bessie, r 105 W Pine
Smith, G Max, postal clerk, r 1 Gould and Central
Smith, & Co, A A, grocers, warehouse 8 S Court, store 17 E Pine
Smith, A A, grocer, A A Smith & Co, r 516 N Orange
Smith, W A, cashier State Bank, boards 106 E Washington, the Sum-
merlin

Diamonds & Gems
of rare art

The only complete as-
sortment in the city.

EVANS
The Jeweler.

- Smith, Mrs A L, clerk, r 204 S Palmetto
Smith, Dr J H, physician, office and residence 39 E Pine, Kuhl-De-Laney Blk
Smith, Miss Mary, stenographer, r 205 S Palmetto
Smith, Miss Bessie, student, r 204 S Palmetto
Smith, Miss Louise, student, r 204 S Palmetto
Smith, Mrs H R, r 515 East
Smith, Frank A, student, r 515 East
Smith, Miss Marion, student, r 515 East
Smith, Mrs A A, r 208 S Liberty
Smith, Miss Helen, r 515 East
Smith, C W, r 107 E Church
Smith, May, c, restaurant, store 20 W Church
Smith, Sweeta, c, r 611 Veach
Smith, Ellen, c, r 505 Ponder
Smith, Ed, c, plumber, r 517 W Church
Smith, J, c, butcher, r 511 W Church
Smith, Binah, c, r 604 Douglass
Smith, Ella, c, r 303 Allen
Smith, Dan, c, l, r 303 Allen
Smith, Arthur, c, servant, r 110 Bryan
Smith, Laura, c, r 23 Bryan
Smyth, The Orange Co, orange packers, office 27 S Orange
Smyth & Co, palm mfgs, office 27 Orange
Smyth, Mrs Addie, trained nurse, r 15 W Concord
Salomon, Benj, dry goods, store 125 Orange, r 307 Shelby
Soon, H R, c, carpenter, 514 W Church
Soon, Lizzie, c, r 514 W Church
Soroosis, Public Library, reading rooms, 16 E Pine
Southern Fertilizer Co, office 107 Charleston Block, Orange ave, warehouse and factory, W Robinson and Gertrude
Southern Mutual Aid Association of Birmingham, Ala, J W Vestal Supt, office 2nd floor Empire Block, 3 W Pine
South Florida Gas & Electric Co, office 1 N Orange
South Fla Foundry & Machine Works, office and fdy 101 W Pine
Southern Express Co, J Rabun agt, office A C L Depot
Spearing, Geo, c, l, r 517 W Church
Speer, W L, baker at Hungerford's, r 614 W Church
Speir, C E, plumber, shop 26 W Church, r 301 W Church
Speir, Edward, plumber, r 301 W Church
Spellman, Miss Annie, r 203 Magnolia

Lovely Bread **T**HE more you eat
that can't be beat **T**HE more you want **O**rlando City Bakery
C. T. HUNGERFORD.

- Spellman, Miss Ella, r 203 Magnolia
 Spellman, C H, r 203 Magnolia
 Spellman, J W, saloon, r 203 Magnolia
 Spellman, Joseph, saloon, r 203 Magnolia
 Spellman's Saloon, (J W Spellman, Joseph Spellman,) saloon 6, 8 E Pine
 Spencer, Dean L A, r 402 Magnolia
 Spengler, Mrs W H, r 106 N Orange
 Sperry, E S, book-keeper r 108 E Central
 Sperry, E F, So Fla Mch Wks, r 115 E Pine
 Sperry, E F, orange grower and packer, store 27 W Church
 Spindler, Mrs Louise, r 202 W Pine
 Squires, John, c, 1, r 816 Division
 St Joseph's Academy, Catholic, E Robinson ave
 St Johns Academy, c Protestant Episcopal, S Terry between Central and Church
 St Paul Ins Co, S G Dolive agt, office 5 Orange
 St John Baptist church, c, S Terry between Central and Church
 Stacey, J A, boards 416 Boone
 Stapp, Guy, r 117 E Pine
 Starbuck, L G, attorney-at-law, office 27 Orange, r 15 Livingston
 Starbuck, J M, gardener, r 505 Livingston ave
 Starbuck, Miss Hope, r 505 Livingston ave
 Starbuck, Victor, r 505 Livingston ave
 Starbuck, J Holland, editor The Democrat, office cor Pine and Main, r 111 S Court
 State Bank of Orlando, 101 S Orange
 Stevens, Prince, c, 1, r 405 Veach
 Steere, Lewis F, r 314 E Robinson
 Steverson, James, c, 1, r 5 Parramore
 Steverson, Florence, c, r 5 Parramore
 Stewart, T W, r 208 Garland
 Stockton, Mrs A H, r 201 S West, The Keystone
 Stokes, Rev John M, c, r 410 W Robinson
 Stokes, Martha, c, teacher, r 410 W Robinson
 Storey, W H, r 212 E Jackson
 Stratton, C W, r 113 E Church
 Stratton, C W, mechanic, r 113 E Church
 Street, Geo, c, barber, r 602 Reel
 Strong, Mrs Blanche W, hotel, Tremont, S Main
 Strong, Miss Lula, r 206 W Church

A Gas Range
for Satisfaction

THE GAS CO.

Get a **GAS RANGE** **THE GAS CO**
and solve the Servant Problem

66

ORLANDO CITY DIRECTORY

Thomas, C A, oranges, r 406 S Orange
Thomas, D, c, restaurant, 18 W Church
Thomas, Henry, c, l, r 517 W Church
Thomas, D, c, cook, r 403 W Church
Thomas, Mary J, c, r 403 W Church
Thomas, Lucile, c, music teacher, r 403 W Church
Thomas, J D, c, clerk, r 403 W Church
Thomas, W T, c, l, r 205 Terry
Thomas, Peter, c, l, r 311 Veach
Thomas, Kisira, c, r 311 Veach
Thompson, W C, r 206 W Pine
Thompson, Mrs Mollie, r 304 South
Thompson, Ranney, r 105 Lucerne Circle
Thompson, D C, manufacturer orange crates, r 103 Lucerne Circle
Thompson, Miss Addie, student, r 103 Lucerne Circle
Tomlin, Miss Statia, r 2 Lucerne Circle
Towers, Wm G, clerk, boards 310 N Orange
Townsend, Chas W, horticulturist, r 407 W Central
Travelers Ins Co, W R O'Neal agt, office 115 Orange
Travelers Ins Co of Hartford, S Y Way agt, office 11 S Orange
Trumpeller, D W, tailor, store 130 S Orange
Tucker, J H, r 306 South
Tukes, Washington, c, l, r 203 Terry
Tukes, Emblie, c, r 203 Terry
Tukes, Charlotte, c, r 203 Terry
Turner, Jas, c, l, r 103 Hawkenstown
Turner, Anna, c, r 103 Hawkenstown

UNLESS you have tried our reliable brands you don't know
DICKSON & IVES, Grocers.

Underhill, Harry, drug clerk, r 5 W Pine
United States Fidelity and Guaranty Co of Baltimore, S W Way agt
office 11 S Orange
U S Dept of Agriculture Bureau of Eutomology, Laboratory at grove
of J M Cheney, office 6 W Pine
Usner, Mrs H S, milliner, r 210 Orange, store 17 S Orange

Prescriptions
Carefully
Compounded

N. J. MERCK
The Druggist.

J. A. COLYER

Merchant Tailor.



Cleaning
Pressing
Dying

ORLANDO CITY DIRECTORY

67

VERY few people always get what they want. We have it.
DICKSON & IVES, Grocers.

Van Brunt, Robert, carpenter, r 310 Pine
Van Houten, C S, fruit grower and packing, r 3 W Pine, 6 Empire blk
Vestal, J W, r 3 W Pine, Empire blk
Vick, J H, sheriff, r 10 W Washington
Vick, Earl, student, r 10 W Washington
Vick, Mrs Nancy, r 10 W Washington
Vining, Mrs F F, r 24 W Pine
Virginia, Polly, c, 404 W South
Vivian, H A, dairy farm, 811 Euclid ave

WHERE else on earth will you find everything so clean. DICKSON
& Ives, Grocers.

Wade, C E, piano tuner, r 601 N Orange
Walden, Chas E, c, waiter, r 20 Bryan
Walden, Julia, c, r 20 Bryan
Walker, J B, orange grower, r 415 Orange
Walker, W T, r 219 New
Walker, Miss Ruby, student, r 105 E Robinson
Walker, Theon, fruit grower, r 15 W Washington
Walker, E H, commission merchant, r 40 Orange
Walker, Mrs Annie E, r 40 Orange
Walker, Jessie, c, servant, r 605 N Orange
Walker, Mary, c, r 116 Bryan
Walker, Henry, c, r 116 Bryan
Walker, Rowan, c, r 309 W South
Walker, Sallie, r 309 W South
Walker, Pinkey, c, r 107 Hawkenstown
Walker, Josh, c, l, r 107 Hawkenstown
Wallace, Minnie, c, r 303 Depoline
Wallace, Jack, c, l, 303 Depoline
Walton, C H, Mgr Postal Tel Co, office 16 S Orange, r 16 S Orange
Wanamaker & Brown, clothing, J C Anno agt, store 5 Orange
Wave, Cora, c, r 517 Patrick
Wave, Samuel, c, l, r 608 Ponder
Wave, Ester, c, r 608 Ponder
Wave, Dan, c, l, r 112 Bryan
Wave, Ellen, c, 112 Bryan,

An Elegant Line of

Cut Glass Ware.

EVANS
The Jeweler

25

Orange Ave.

The Cash Grocery

Selling for Cash Enables us to
Sell Cheaper. Give us a Trial.

68

ORLANDO CITY DIRECTORY.

- Warfield, Mrs C B, r 211 South
Warlow, Thomas, c, 1, r 406 Gertrude
Warlow, T P, lawyer, (Ma-sey & Warlow,) r 107 W America
Warren, F M, machinist, works at Gas Co, r 304 N Orange
Warring, H, c, r 108 Hawkenstown
Washington, Eleck, c, 1 r 605 Douglass
Washington, Idla, c, r 605 Douglass
Washington, Annie, c, r 208 Allen
Washington, Will, c, 1, r 114 Bryan
Washington, Lou, c, r 114 Bryan
Washington, Isam, c, 1, r 114 Bryan
Washington, Eddie, c, bellboy, r 114 Bryan
Washington, Eva, c, r 110 Bryan
Washington, Gussie, c, r 107 Hawkenstown
Washington, Richard, c, 1, r 107 Hawkenstown
Waters, H E, clerk, San Juan, N Orange, r 5 S Court
Watkins, T J, r 2 Lucerne Circle
Watkins, Bessie, c, r 212 Depoline
Watson, W P, Chairman, General Commission of Adjustment, Brotherhood of Locomotive Engineers, S A L Rwy, r 9 E Concord
Watson, W Blyth, student, r E Concord
Watts, Mary, c, r 202 W Robinson
Wattenscheidt, Dr Chas, r 212 E Amelia
Way, S Y, insurance and real estate, office 11 Orange, r 702 E Elam
Weathers, Alice, c, r 602 Reel
Webb, Jas D, orange grower, r 612 E Nall
Welburn, Mrs Mary E, r 413 E Central
West, Mrs Elliott, r 204 W Central
Western Union Tel Co, office 127 Orange
Westchester, Ins Co, W R O'Neal agt, office 115 Orange
Westover, E H, bicycle repair, store 13 Orange
Whittier, James, c, butcher, r 301 Reel
Whittaker, Annie, c, r 301 Reel
Whitaker, Coffee, c, 1, 306 Depoline
White Star Restaurant, Vining F F, prop, store 26 W Pine
White Rose Saloon, I H Nettles & Co, saloon 6 W Church
White, Miss Jessie, student, r 310 W Church
White, Miss Reba, r 310 W Church
White, Claude, clerk, r 310 W Church
White, Lula, c, r 110 Bryan
Whitehead, E E, c, barber, r 22 Bryan

**ORLANDO BANK &
TRUST CO.**

4 per cent
Interest on Saving Accounts

LIQUORS

H. W. Metcalf,

Orango Avenue.

Annex Saloon,

Church Street.

ORLANDO CITY DIRECTORY.

69

- Whitehead, P S, c, r 22 Bryan
Whitley, M S, r 206 W Pine
Whitman, Alton B, denist, office 107 Charleston Block Orange ave. r
12 Gould
Whitman, Mrs T C, r 12 Gould
Whitman, Miss Alice, r 12 Gould
Whittaker, Lenora c, r 310 Patrick
Whitten, R R, r 404 W Church
Wichtendahl, L, clerk criminal court of record, book-keeper S Fla
Foundry and Machine Works, office Gertrude and W Pine
Williams, Vivian B, tailor, r 7 N Orange, Rock Bldg
Williams, S, servant, r 502 N Orange
Williams, Lona, c, r 509 Douglass
Williams, Arnett, c, r 509 Douglass
Williams, Ella, c, r 207 Chatham
Williams, James, c, l, r 207 Chatham
Williams, Ellen, c, r 205 Chatham
Williams, Charlie, c, l, r 514 Veach
Williams, Isabelle, c, 514 Veach
Williams, Rachael, c, restaurant, 413 Veach
Williams, Rachael, c, r 504 Veach
Williams, Rev R V, c, r 402 W South
Williams, Mary V, c, r 402 W South
Williams, Janie, c, r 406 Veach
Williams, Mildred, c, r 310 Allen
Williams, A, c, r 310 Allen
Williams, Ella, c, 403 Lemon
Williams, Bill, c, l, r 614 Ponder
Williams, Cornelia, c, r 614 Ponder
Williams, Nettie, c, r 23 Bryan
Williams, Elizabeth, c, r 508 Divison
Williams, Willie, c, l, r 508 Div sion
Williams, Geo E, c, grocery store 10 Bryan, r 20 Terry
Williams, Matilda, c, r 20 Terry
Williams, Eva, c, r 113 Hawkenstown
Williams, H A, c, l, r 113 Hawkenstown
Williamsburgh City Ins Co, W R O'Neal agt, office 115 Orange
Wills, Ida, c, r 611 Veach
Wilmott, F W, meat market, r and store 2 E Church
Wilmott, Capt J W, prop Tremont Hotel, hotel S Main,
Wilmont, Miss Lillian S, Tremont, hotel S Main

Pies

That Can't be Beat,
Ones Like Mother used to Make
Home Made Lemon, a Specialty

Orlando City Bakery

C. T. HUNGERFORD, Prop.

When you want groceries,
Don't bother coming out—Just Phone
You'll get what you want—the best

Orlando Grocery Co.
Phone 150

Wilson, J B, r 503 W Central
Wilson, Mrs Mary L, r 601 E Anderson
Wilson, Miss Lilian, r 601 E Anderson
Wilson, Preston, c, 1, r 407 W South
Wilson, Rosa, c, r 407 W South
Winter Park Electric & Fuel Co, office 1 N Orange
Woman's Exchange, 22 E Pine
Wood, T J, r 412 Orange
Wood, Miss Rosa A, teacher Cathedral School, E Central ave
Wood, Harry, painter, r 207 Chatham
Woodruff, Seth, r 807 S DeLaney
Woodruff, Mrs A H, 307 N Main
Woodworth, John, works Cook's Auto Co, r 204 Lemon
Wright, Geo H, r 206 E Jackson
Wright, Mrs Helen S, r W America
Wright, R H, painter, r 115 Magnolia ave

XACTLY what the others say DICKSON & IVES Groceries are the
very Best.

YOU are the judge of good Groceries, try DICKSON & Ives, corner
Orange and Central avenue.

Yancey, T A, meat market, r 710 Division
Yancey, Co, T A, The Orlando Meat Market, meats, store 128 S
Orange
Yates, Geo, 1, r 416 E Church
Yates, Miss Katherine, r 416 E Church
Y M C A, reading room, 6-12 S Orange
Young, Miss Grace, r 111 E Church
Young, Mrs E, r 111 E Church
Young, E A, r 111 E Church
Young, Mrs Geo F, r 731 Church
Young, Robt, c, 1, r 406 Gertrude
Young, M A, c, r 406 Gertrude
Yowell, W D, Reporter-Star Pub Co, r 29 E Pine
Yowell, N P, dry goods, store 8-10 S Orange, r 206 E Church
Yowell, Mrs Susan N, r 209 S West
Yowell, H H, public stenographer, office 127 Orange, r 209 S West
Yulee, C M, r 702 S Elam

QUEER
How Some people appreciate
Good Things to Eat ...

C. T. HUNGERFORD
... Restaurant ...

They Always
Come Again.
●●●●●●●●●●

DAILY

WEEKLY

THE REPORTER-STAR
PUBLISHING CO.

Orlando,

Florida.

PUBLISHERS OF

THE REPORTER-STAR

The Oldest and Best Paper in
South Florida.

No Better Advertising Medium in the
State.

Daily Edition \$5.00 per year.

Weekly Edition \$1.00 per year.

SUPERIOR PRINTING FOR ALL PURPOSES.

GAS!

Always ready
Always clean
Never any trouble

THE GAS CO

BUSINESS DIRECTORY,

FEBRUARY, 1907.

Being a classified list of all Professions, Manufacturers, Trades and Pursuits in the city of Orlando—Each classification being Alphabetically Arranged, thus exhibiting the Full Address and Special Business of Her Citizens.

For the Names of Individuals and their Residence Address see the General Directory Preceding This

Attorneys-at-Law.

Beggs & Palmer, 4 W Pine
Cooke, O R, 412 E South
Jewell, W H, 23 E Pine
Jones & Jones, 23 E Pine
MacCallum, Archibald, 107 Charleston Block
Massey & Warlow, Empire Blk, 3 W Pine
Robinson, C B, r 6 E Irene
Starbuck, L G, 27 S Orange

If its anything in our line,
I have it.

Evans, Jeweler.

LIQUORS.

ORLANDO CITY DIRECTORY.

73

Automobile Garage.

Cook Auto & Carriage Company, Armory Bldg, S Main

Barber Shops.

Adams, W T, c, 3 E Pine
Davis, Geo, H, c, 6 W Church
Harris, J B, & Son, c, 7 S Orange
Jackson, A P, c, 116 South Orange
Jordan & Chett, c, 24 W Church
Rollins, Harry, 112 S Orange
San Juan Barber Shop, 2 N Orange

Bakery.

Nicholson, J E, 17 W Church
Orlando Steam Bakery, 116 S Orange
Rock, Chas, 7 N Orange

Blacksmithing.

Anderson, Fred, 310 Pine
Christopher, Morris, 6 E Church
Cook Auto and Carriage Co, E Pine
Holland, R L, 28-30 E Pine
Hupple, Al, 207 W Pine
Ivey, M L, 305 Shelby
Rogers Jas A, 301 Shelby

Boat Builder.

Empie, J L, 107 Garland

Boiler Makers.

Cain-O'Berry Boiler Co, Gertrude and Robinson

Bicycles.

Shanibarger, Jacob, 10 E Church
Westover, E H, 13 Orange

Books and Stationery

Branch, W S, 14 S Orange
Blue Book Store, L F Brigham, 110 S Orange
Curtis & O'Neal, 115 S Orange

Orlando Bank & Trust Co 4 per cent interest
On Time Certificates
of Deposit.

Brokerage.

Hart, A C, 406 Magnolia
Lewis, N L, 506 Magnolia
Post, Wm C, 315 Robinson
Rowland, R S, 107 Charleston Block
Walker, E H, 40 Orange

Building Blocks.

Orlando Building Block Co, W Livingston and R, R,

Carriage Manufacturers.

Berry, H H, 32 E Church
Cook Auto & Carriage Co, Armory Bldg, S Main
Holland, R L, 28-30 E Pine
Macy Wagon Co, Shelby and South

Carpenters

Barclay, Robt, 714 W Church
Barlow, J F, 511 Hughey
Barton, J H, 716 W Church
Beasley, J W, 210 Garland
Blum, W W, 402 Ponder
Bowen, N H, 305 Garland
Bowsher, A G, 14 W Concord
Brooks, A B, c, 403 W Church
Clayton, Benj, 401 N Orange
Dann, W C, 407 Hughey
Devaugh, R E, c, 204 Terry
Diamond, J D, 209 W Pine
Diffenderfer, John, 9 E Robinson
Flanagan, Wm T, 15 W Washington
Horn, Paul, 6 Gould
Israel, Henry, c, S Terry
Jernigan, D E, 8 Depoline
Jones, C J, c, 22 Terry
Kuhn, J W, 409 S DeLaney
Lillvik, Andrew, 310 W Church
Lindsey, J O, 206 Shelby
Logan, R W, 106 Anno
Long, A G, 616, W Church

Prescription Work
is our specialty

The Blue Drug Store

ORLANDO CITY DIRECTORY

75

Munn, H W, 712 W Church
Nobles, Bud, 310 Pine
Osborne, F B, 402 America
Pugh, M E, 506 W Central
Reeves, A P, 313 W Central
Robinson, John, 303 Veach
Swearingen, W J, 403 W Church
Van Brunt, Robt, 310 Pine

Clothing

Anno, J C, 5 S Orange
Boardman, F N, 106 S Orange
Brown & Lartigue, 22 S Orange
Hammond & Bunch Co, 105 S Orange
Kanner, H, 103 S Orange
Palmer, Jerome, 29 Orange
Slemons, W M, 111 S Orange
Wanamaker & Brown Agency, 5 S Orange

Confectioners.

Butts' Candy Store, 108 S Orange

Contractors.

Horn, L C, 6 Gould
Hyers, Frank, 4 E Church
Isaacson, Oscar, 201 E Robinson
King, M, 18 Pine
Mathews, T W, 14 E Church
Mosteller, A J, 511 W Central
McMillan, H E, 509 Osceola
Shreve, H A, 101 Veach

Dentists.

Akers, Dr E F, 2 W Pine
Crawford, Dr Geo C, 117 S Orange
Whitman, A B, 107 Charleston Block

Dressmaking.

Bellamy, Mrs Geo, 208 W Pine
Hamilton, Miss N E, 21 N Orange
Hamilton, Mrs A A, 110 W Pine

E. W. Jackson

Makes the best *Photographic* work
in Orange County.

Hinton, Miss Minnie, 103 West Central
Jones, Emma, c, 402 Lemon
Remington, Maud, 7 N Orange
Rhyne, Miss Amanda, 20 E Pine

Drug Stores.

Abernethy Drug Company, 24 S Orange
Blue Drug Store, 119 S Orange
Merck, N J, 19 S Orange

Dry Goods.

Boardman, F N, 106 S Orange
Clouser, M E, 20 S Orange
Hammond & Bunch Co., 105 S Orange
Kanner, H, 103 S Orange
Remnant Store, 9 S Orange
Solomon, B, 125 S Orange
Slemons, W M, 111 S Orange
Yowell, N P; 8-10 S Orange

Fertilizer.

Painter, E O, Fertilizer Co, 101 W Central
Southern Fertilizer Co, 107 Charleston Blk

Florists.

Allen, J F, 720 W Central

Fruit Stores

Rinaldi, J B, 19 W Church
Rinaldi, Joe, 33 W Church
Shepard, S W, 120 S Orange

Fruit Packers.

Barlow, T H, 104 Garland
Benedict Pineapple Co, 502 Grace
Dow & Co, Gertrude and Robinson
Preston & Robinson, Gertrude and W Jefferson
Smyth, The Orange Co, 27 S Orange
The Walkers, cor Gertrude and Jackson

Furniture.

Guernsey, Jos L, 129 S Orange
Hand, Elijah, 7-11 W Pine
Heffield, E A, 21 E Pine

Gas and Electric Light Company.

South Florida Gas & Elec Co, 1 N Orange
Winter Park Electric & Fuel Co, 1 N Orange

Grain, Feed, etc.

Dickson & Ives, 2 S Orange
Laubach, P F, 34 W Church
Lord Grocery Co, 109 Orange
Mack, Peter, 10 Depoline
Smith, A A, & Co, 17 E Pine

Grocers.

Brown, W C, 410 W South
Cash Grocery Co, 122-4 S Orange
Dickson & Ives, 2 S Orange
Grover, J A c, 25 Bryan
Jenlac, Jas, c, Terry and Veach
Jewett, D W, c, 12 Bryan
Long, W E, 214 W Church
Lord Grocery Co, 109 Orange
Mann, T A, 9 E Pine
Nicholson, J E, 17 W Church
Orlando Grocery Co, 15 E Pine
Seegar, J T, 3 N Orange
Shepard, T J, 5 E Pine
Smith, A A & Co, 17 E Pine
Taylor Grocery Co, 120 W Church
Williams, Geo E, c, 10 Bryan

Gunsmith.

Richards, F E, 10 E Church
Shainbarger, Jacob, 10 E Church

Hardware, Etc.

Bumby, Jos, 102-4-6 W Church
Guernsey, Jos L, 129 S Orange

Everything the heart could desire. Costs
no more than your pocket can afford.

EVANS The
Jeweler.
25 South Orange Ave,



Heffield, E A, 21 E Pine
Helms Hdw Co, 8-12 E Pine

Harness and Repairing.

Gulledge, A E, 38 W Church
Langenbach, F, 30 E Pine

Hotels.

Arlington House, 108 W Church
Lawrence House, 101 W Church
San Juan Hotel, N Orange and Central
Tremont Hotel, Main and Church
The Wyoming, cor Magnolia and Amelia

Ice and Cold Storage.

Peoples Ice and Cold Storage Co, 1 N Orange

Insurance.

Aetna Ins Company of Hartford, 11 S Orange
Agricultural Ins Company of Watertown, 11 S Orange
American Ins Company, 115 S Orange
Atlas Ins Company, 115 S Orange
Citizens Ins Company, 5 S Orange
Curtis & O'Neal, 115 S Orange
Dann, H Carl, Guarantee Trust Co, 212 Patrick
Dolive, S G, 5 S Orange
Fidelity and Casualty Ins Company, 115 S Orange
Fuller & Giles, 123 S Orange
General Accident and Ins Company of Philadelphia 117 S Orange
Georgia Home Ins Company, 5 S Orange
German Alliance Ins Company of New York, 11 S Orange
Glens Fall Ins Co, 115 S Orange
Hamburg-Bremen Ins Company, 115 S Orange
Hawkins, A M, c, 310 Veach
Ins Company of North America, 11 S Orange
Knox, Jas A, r 106 Lucerne Circle
Lloyd's Plate Glass Ins Co, 11 S Orange
London Assurance Co, 115 Orange
London and Lancashire Ins Co, 115 S Orange
General Accident and Ins Company of Philadelphia, 117 S Orange
New York Underwriters Agency, 11 S Orange

THE BATTLE CREEK SANITARIUM Treatment Rooms.

Acute and Chronic Disorders Treated by Rational Methods.

GAS

The Light that never Fails

The Gas Co.

ARC LAMPS

Efficiency, Economy.

North British and Mercantile Ins Company, 115 S Orange
Northern Assurance Company of London, 11 S Orange
Norwich Union Assurance Company, 11 S Orange
O'Neal, W R, 115 S Orange
Orient Ins Company, 115 S Orange
Penn Mutual Life Ins Company, 11 S Orange
Pennsylvania Ins Company, 115 S Orange
Phoenix Ins Company, 115 S Orange
Queen Ins Company, 115 S Orange
Royal Ins Company, 5 S Orange
Royal Benefit Society, 310 Veach
Scottish Union and National Ins Company, 11 S Orange
Southern Mutual Aid Association, Empire block, 3 E Pine
St Paul Ins Company, 5 S Orange
Travelers Ins Company, 115 S Orange
Travelers Ins Company of Hartford, 11 S Orange
United States Fidelity and Guaranty Co of Baltimore, 11 S Orange
Way, S Y, 11 S Orange
Westchester Ins Company, 115 S Orange
Williamsburg City Ins Company, 115 S Orange

Iron Foundry and Machinists.

South Florida Foundry and Machine Works, 101 W Pine

Jeweler.

Evans, T H, 25 S Orange
Sherman, Wm C, 11 Orange

Livery Stable.

Douglass Bros, 2 W Church
Hyer, R L, 1 S Orange
Magruder & Co, J B, E Pine
Martin, M, 8 W Church
Mathews, W M, W Church

Lumber.

Orlando Novelty Wks and Lumber Yard, Robinson and Gould

Manicuring

Adams, Miss G E, 210 S Main
Beauchamp, Miss Mary, 2 N Orange

A choice Selection of **Diamonds** and other precious gems **EVANS**
The Jeweler



Meats.

Bradford, H, Cash Meat Market, 7 E Pine
Orlando Meat Market, 128 S Orange
Wilmott, F W, cor Orange and Church

Meat Packers.

Cahoon Bros, 511 Starkey

Men's Furnishing.

Boardman, F N, 106 S Orange
Brown & Lartigue, 22 S Orange
Hammond & Bunch Co, 105 S Orange
Kanner H, 103 S Orange
Palmer, Jerome, 29 Orange
Slemons, W M, 111 S Orange

Milliners.

Daniels, Mrs E A, 19 W Pine
Dick, Mrs R G, 235 Orange
Meyer, Mrs H, 12 W Central
Usner, Mrs H S, 17 S Orange

Mirror Plating.

Armstrong, W F, & Co, 15 W Pine

Naval Stores.

Davis, W M, 112 E Church
Musslewhite, J P, 109 N East
Overstreet Turpentine Co, 2 W Pine

Notary Public

Jansen, Carl, 2 W Pine
Shine, W E, Empire Block, 3 W Pine

Oil Company.

Standard Oil Co, G W Berry, agt, 502 W Central

Optician,

Likins, Dr O P, 107 Charleston Blk, Orange ave

Abernethy Drug Co.

PURE DRUGS,

. . . Competent Service. . .

Orange Crates

Thompson, D C, r 103 Lucerne Circle

Painting and Decorating.

Barker, Geo A, 110 W Pine

Cook Auto & Carriage Co, E Pine

Finley, J B, & Son, 32 E Pine

Gayle, R C, 404 Ponder

Kinney, W E, 4 E Church

Loveless, C L, 205 New

Shanibarger, Jacob, 102 Church

Palmetto Factory.

Evans, S T, 208 E Robinson

Smyth, & Co, 27 S Orange

Photographers.*Howard, C E*, 15 S Orange*Jackson, Edw W, c*, 114 S Orange

Modern Electric Studio, 203 W South

Robinson, T P, 107 Orange

Physicians

Brown, Dr P L, 505 W Central

Christ, Dr C D, 3 N Orange

Harper, Dr, W M, 103 E Pine

Harris's Sanitorium, 6 E Washington

Harris, Dr R L, W Central opposite San Juan

Halbert, Dr J F, 408 S Main

Kilmer, Dr W, Charleston Blk, S Orange

Lewis, Dr, Central ave opposite San Juan

Maddox, Dr J F, 107 Charleston Blk

McEwan, Dr J S, Central opposite San Juan

Peak, Dr R H, 413 S Main

Person, Dr W C, 15 E Church

Porter, Dr Geo, 4 S Orange

Rivers, Dr J R, c, 15 W Church

Rush, Dr J D, 117 S Orange

Smith, Dr J H, 39 E Pine

COOK THE GAS Co.

With Gas

82

ORLANDO CITY DIRECTORY.

Piano Tuning

Wade, C E, 601 N Orange

Picture Framing

Curtis & O'Neal, 115 S Orange

Hand, Elijah, 7-11 W Pine

Armstrong, W F, & Co, 15 W Pine

Plumbing

Gunter, H O, 33 E Pine

Hyer, & Rollins, 10 W Church

Irvine, J R, 35 E Pine

Speir, C E, 26 W Church

Printing and Publishing

Hudson, S R, cor Pine and Main

Lawton, J B, 14 E Pine

Reporter-Star Publishing Co, 27 E Pine

Public Stenographer

Yowell, H H, 127 Orange

Real Estate

Curtis & O'Neal, 115 S Orange

Dolive, S G, 5 S Orange

Dollins, L J, 305 S Liberty

Fuller and Giles, 123 S Orange

Gore, Mahlon, 4 S Orange

Holden, W D, 3 S Orange

Jansen, Carl, 2 W Pine

Long, B, 116 S Orange

Lord, Chas, 3 S Orange

McDowell, Chas, 709 W Central

O'Neal, W R, 115 S Orange

Pell Ducan C, 2 N Orange

Restaurants

Hungerford, C T, 116 S Orange

Metcalf & Co, H W, 18 S Orange

Spellman's Restaurant, 6-8 E Pine

White Star Restaurant, 26 W Pine

Books Music
Stationery Periodicals

Curtis & O'Neal.

LIQUORS

H. W. Metcalf,

Orango Avenue.

Annex Saloon,

Church Street.

ORLANDO CITY DIRECTORY.

83

Saloons

- Bass, Everett E,* 11 W Church
Metcalf, W H, & Co, 118 S Orange and Annex Saloon, 5 and 7 W Church
Spellman's Saloon, 6-8 E Pine
White Rose Saloon, 6 W Church

Sanitariums and Treatment Rooms.

- Battle Creek Sanitarium,* 22 W Pine
Harris Sanatorium, 6 E Washington
Institute of Electro Mechano Therapy, 27 E Pine

Sewing Machines

- Armstrong, W F & Co,* 15 W Pine
Hand, Elijah, 7-11 W Pine
Heffield, E A, 21 E Pine
Singer Sewing Machine Co, 132 S Orange

Shoes

- Boardman, F N, 106 S Orange
Brown & Lartigue, 22 S Orange
Clouser, M E, 20 S Orange
Duckworth, E G & Co, 18 S Orange
Hammond & Bunch Co, 105 S Orange
Kanner, H, 103 S Orange
Slemons, W M, 111 S Orange

Shoe Repairing

- Gulledge, A E, 38 W Church
Hanson, A, 3 E Pine
Hopkins, A T, c, 14 W Church
Mathes, N J, 103 W Church

Soda Water Mfgr.

- Rampke, J D, 207 Garland

Street Railway

- Winter Park Electric and Fuel Co, 1 N Orange

Did You Say Drugs? Then Say

N J MERCK, The Druggist

Steam Laundry

Orlando Steam Laundry, 20-2-4 E Church
Pearl Gloss Laundry, 605 W Central

Tailoring

Anno, J C, 5 S Orange
Colyer, J A, c, 15 W Church
Harvey, John H, 411 N Orange
Links, John, 4 E Church
Trumpeller, D W, 130 S. Orange
Williams, Vivian B, 7 N Orange

Telegraph

Postal Telegraph and Cable Co, 121 S Orange
Western Union Telegraph Co, 127 S Orange

Transfer and Hauling

Baskerville, c, 611 Canfield
Dann's Transfer, 38 W Church
Grover's Transfer, 15 W Church
Hoag, H P, 130 S Orange
Long, A F, 306 W Church

Undertaking, Embalming

Armstrong, W F & Co, 15 W Pine
Hand, Elijan, 7-11 W Pine
Heffield, E A, 21 E Pine, 113 S Court

Upholstering

Douglass, A A, c, 23 Terry

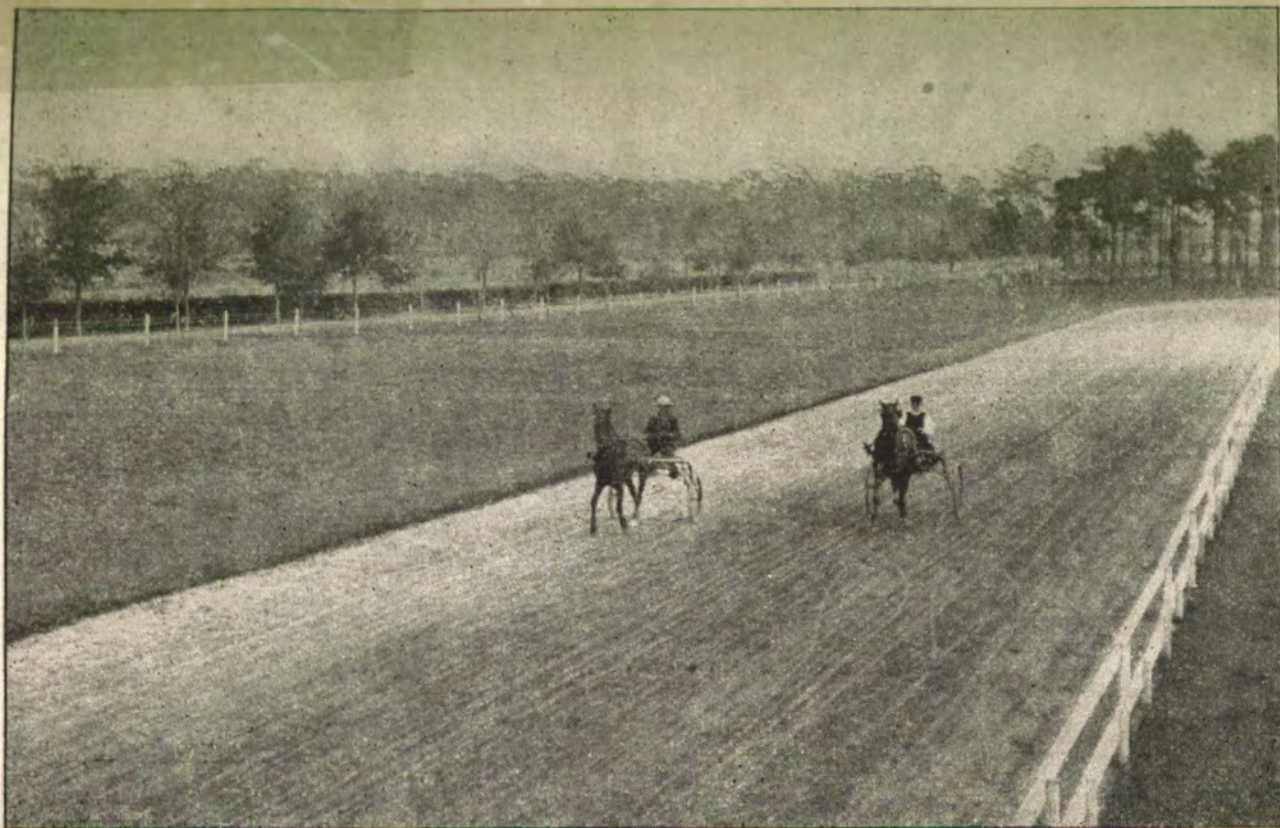
Voice Culture

Likins, Mrs, 107 Charleston block, Orange

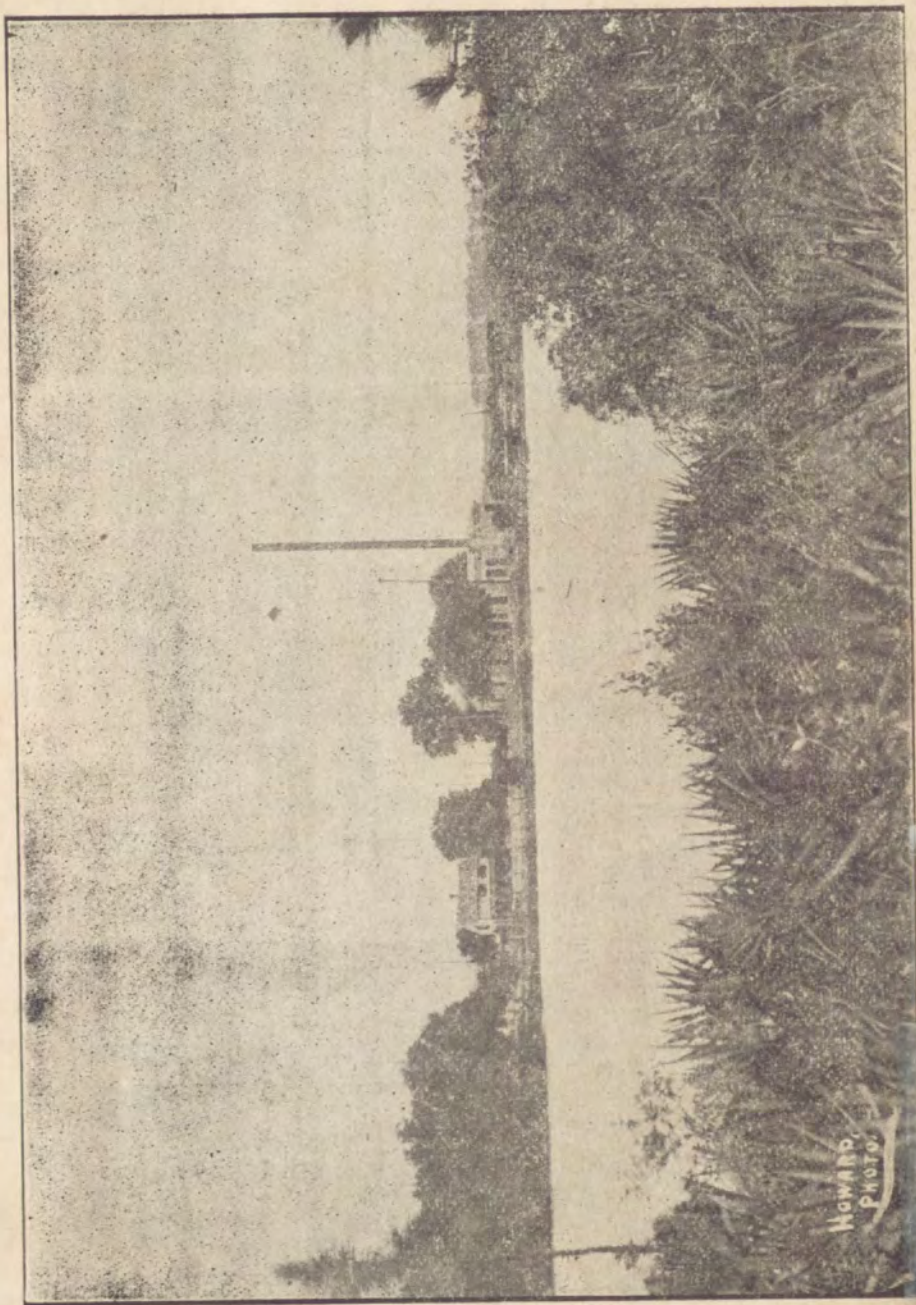
Water Company

Orlando Water & Light Co, 1 N Orange

Orlando Opera House Something doing all the Time
& **Amusement Co.** Watch the Local Papers



MR. ISAAC A. HOPPER'S HALF MILE TRACK.



Howarth,
Photo.

ORLANDO WATER AND LIGHT PLANT AND LAKE HIGHLAND.

JANUARY 5TH 1957.

Around The Town

**Prominent Orlandoans in Old Directory
Many Are Still Living in This Area
Confederate Flags Are Waving Again**

By HANLEY POGUE

S. Waters Howe has an old Orlando city directory for the year 1907 and recently Wm. S. Branch, stationery and office supply dealer here for more than 50 years, read through the book and made a list of the seven firms still in existence that were listed 43 years ago.

He also picked out the names.

HAVANA TOURS
All-expense tours from
Marine Stn.,
Springs, St.
tours to Cypress Gardens, Bok

HTSEING

Washington — (P) — Re-
Dwight L. Rogers [D-Fla] re-
introduced today legislation to
provide for terms of federal
court at West Palm Beach and
Fort Myers, Fla.

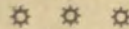
COURT TERMS ASKED

11:00	Young American Club	Nws-Bill
11:15	Young American Club	Let's Prete
11:30	Teen Time	"Romance"
11:45	Teen Time	"Romance"
12:00	Citrus Mutual Callar	Theatre of
12:15	News	Theatre of
12:30	Girl Scout Program	Grand Cen
12:45	YMCA Radio Hour	Grand Cen
1:00	Canasta	Stars O'er
1:15	Hadassah	Speaks
1:30	Saturday	Serenade
1:45	Saturday	Serenade
2:00	Metropolitan	Opera
2:15	Metropolitan	Opera
2:30	Metropolitan	Opera
2:45	Metropolitan	Opera
3:00	Metropolitan	Opera
3:15	Metropolitan	Opera
3:30	Metropolitan	Opera
3:45	Metropolitan	Opera
4:00	Metropolitan	Opera
4:15	Metropolitan	Opera
4:30	Metropolitan	Opera
4:45	Metropolitan	Opera
		Cross Sec.
		Cross Sec.
		Make Way
		Make Way
		Farm News
		Report Ov
		Adv. in Sc
		Dave Steph
		Stock quot
		Galen Drai
		Music with
		Music with
		Give & Ta
		Give & Ta
		Stars O'er
		Stars O'er

E. Porter, Clara Preston, Helen Putnam.

Mary Scruggs, Lilla Shine, Billy Smith, Frank Smith, Marian Smith, Spellman sisters, Lottie Swearingen, Jack Tanner, Eva Taylor, Addie Thompson, Harry Waters, S. Y. Way, Reba White, Claude White, Dr. A. B. Whitman, Alice Whitman, Lillian Wil-mott, N. P. Yowell.

Mary Robinson, Fannie Rob-
inson, Randolph Robinson, T.
P. Robinson, Claire Robinson,
Corinne Robinson, Edith Rob-
inson, Eloise Robinson, Olga
Rock and Bertha Rock.



Mrs. Margie L. Holbrook, 804 Magnolia ave., is the owner of the oldest Orlando city direc-tory known to be in existence. The directory was published in 1886 by W. S. Webb of New York City.

The late John S. Rowland had an 1887 Orlando directory that he donated to Albertson Public Library.

Miss Claudia Delaney has a directory published in 1889.





The HAMMOND & BUNCH CO.

ORLANDO,

FLORIDA.

Dry Goods, Notions.

Ladies' and Men Furnishings.

HART SCHAFFNER & MARX Fine Clothes,

CRAWFORD Shoes,

MONARCH and CLUETT Shirts

Agents for McCall Patterns.

Telephone Number 28.

