

# Research in Sicily: publication preparations and laying the groundwork for student participation

Randall Souza\*

\*Department of History, College of Arts and Sciences, Seattle University



Loom weight from indigenous Sicilian settlement at Terravecchia di Cuti with inscription in Greek letters μημη ("Mother"?), 5th century BCE



Panoramic view of archaeological fieldwork conducted by the American Excavations at Morgantina: Contrada Agnese Project

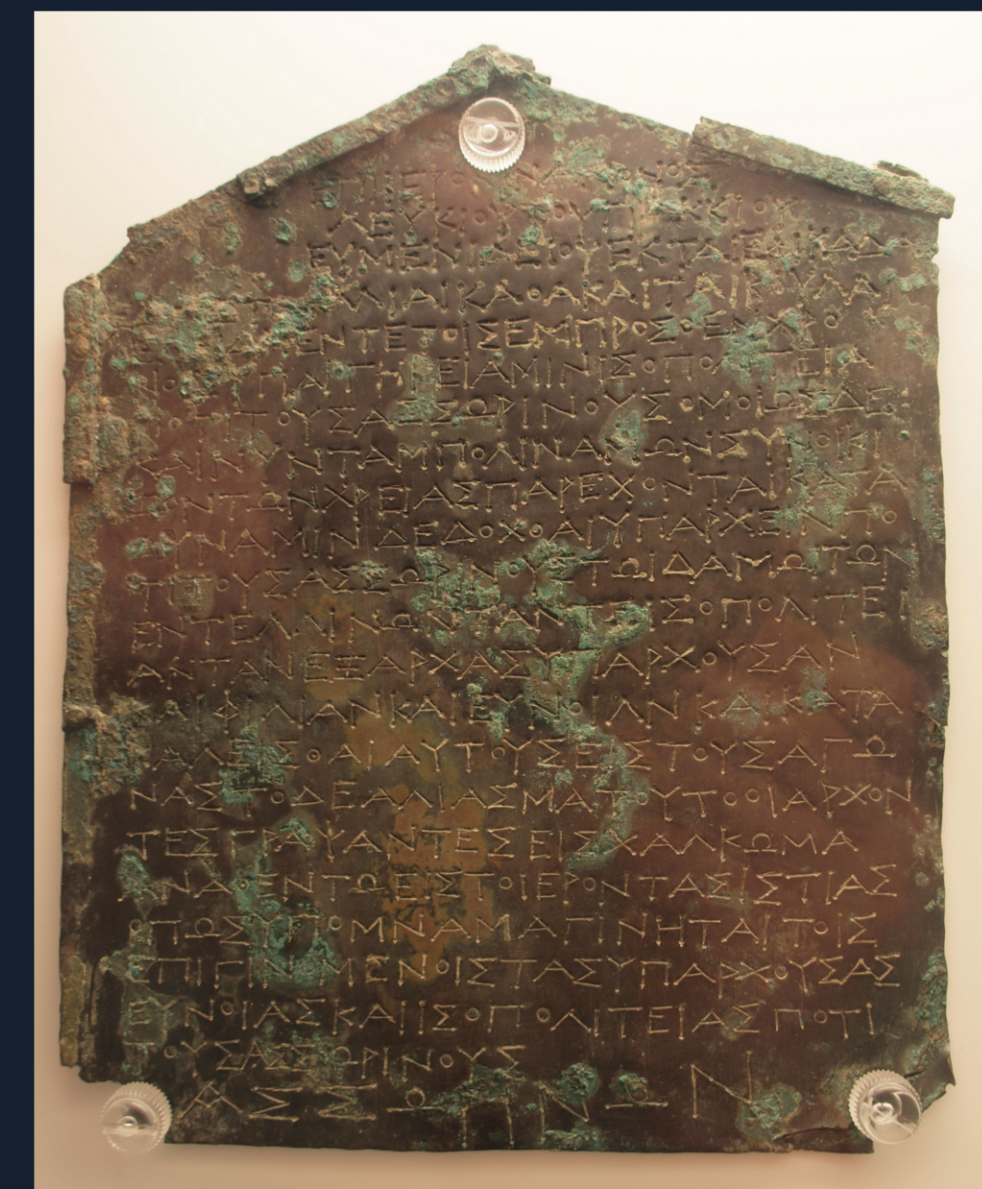


American Excavations at Morgantina: Contrada Agnese Project group photo 2019

## American Excavations at Morgantina: Contrada Agnese Project (AEM:CAP)

### Timeline

- 2013 Initial excavation season
- 2014-2018 Phase One excavation seasons
- 2019-2020 Phase One study seasons to prepare material for final publication
- 2021 Phase One excavation volume published
- 2021-? Phase Two survey and excavation



Bronze tablet with a decree of the people of Entella recording a period of displacement and wandering in which the people of Assoros provided help, and thanking the people of Assoros, 3rd century BCE



Working in the laboratory with AEM:CAP

### Select Bibliography

Benton J., Gorham R., Huemoeller J.F., Lieberman L.A., Massey D., Smalling A., Souza R., Truetzel A., Walthall D.A., 2015, "Recenti scavi a Morgantina: il progetto Contrada Agnese (2013-2014)," in G. Bruno (ed.), *La geoarcheologia come chiave di lettura per uno sviluppo sostenibile del territorio sala congressi del museo archeologico di Aidone (EN), 04-05 luglio 2014*, SIGEA 2: 19-24.

Walthall D.A., Souza R., Benton J., Huemoeller J.F., 2014, "Preliminary Report on the 2013 Field Season of the American Excavations at Morgantina: Contrada Agnese Project (CAP)," in *FOLD&R* 322: 1-14.

Walthall D.A., Souza R., Benton J., 2016, "Preliminary Report on the 2015 Field Season of the American Excavations at Morgantina: Contrada Agnese Project (CAP)," in *FOLD&R* 364: 1-23.

Walthall D.A., Souza R., Benton J., Wueste E., Tharler A., 2018, "Preliminary Report on the 2015 Field Season of the American Excavations at Morgantina: Contrada Agnese Project (CAP)," in *FOLD&R* 408: 1-23.

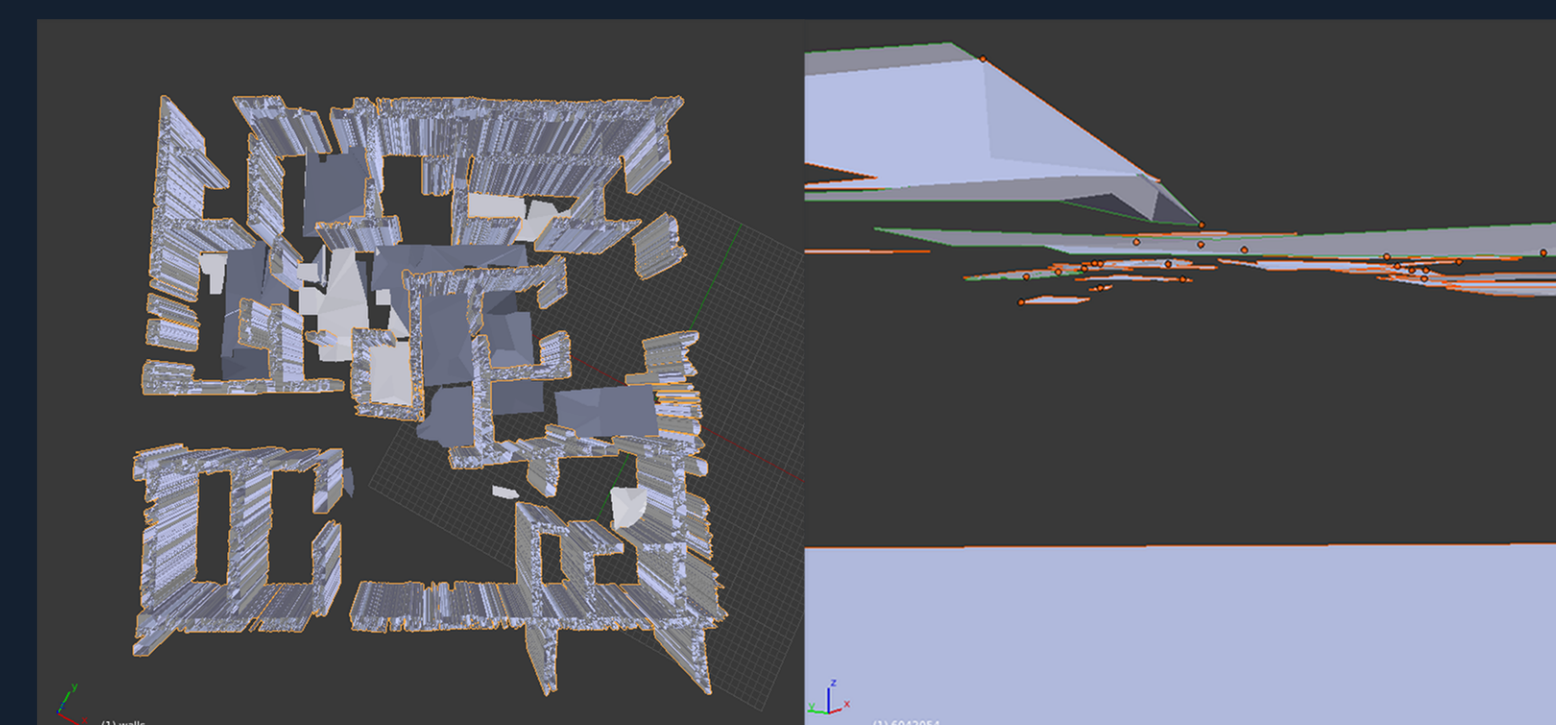
Souza R., Walthall D.A., Benton J., Wueste E., Tharler A., Crowther B., Schirmer C., 2019, "Preliminary Report on the 2016 Field Season of the American Excavations at Morgantina: Contrada Agnese Project (CAP)," in *FOLD&R* 450: 1-25.



Selinunte, Porta Nord fortifications with defensive ditch (center) and forward-projected guard tower (background), 4th-3rd centuries BCE under Carthaginian control



Syracuse, Euryalos fortifications with defensive ditch (center) and forward-projected guard tower (right), 4th-3rd centuries BCE under Greek control



3D models of the AEM:CAP house, which was constructed in the 3rd century BCE. Top-down view showing walls and floors by room (left); ground-level view showing floor elevation comparison (right).