

MaineHealth

MaineHealth Knowledge Connection

Operational Excellence

Summer 6-17-2019

Safe Care for Seizure Patients on an Epilepsy Monitoring Unit

Deborah Bachand
Maine Medical Center

Lauri Wilson
Maine Medical Center


Rachel Caiola
Maine Medical Center

Lynne Keller
Maine Medical Center

Megan Selvitelli
Maine Medical Center

See next page for additional authors

Follow this and additional works at: <https://knowledgeconnection.mainehealth.org/opex>

 Part of the [Critical Care Commons](#), [Critical Care Nursing Commons](#), [Interprofessional Education Commons](#), [Nervous System Diseases Commons](#), [Neurosciences Commons](#), [Nursing Administration Commons](#), [Other Medical Specialties Commons](#), and the [Primary Care Commons](#)

Recommended Citation

Bachand, Deborah; Wilson, Lauri; Caiola, Rachel; Keller, Lynne; Selvitelli, Megan; Farley, Mary Jo; O'Neill, Jennifer; Shrock, Sara; Plummer, Hannah; Prokey, Sally; Sparks, Amy; Tyzik, Stephen; Nayak, Suneela; and Hanselman, Ruth, "Safe Care for Seizure Patients on an Epilepsy Monitoring Unit" (2019). *Operational Excellence*. 28.

<https://knowledgeconnection.mainehealth.org/opex/28>

This A3 is brought to you for free and open access by MaineHealth Knowledge Connection. It has been accepted for inclusion in Operational Excellence by an authorized administrator of MaineHealth Knowledge Connection. For more information, please contact mckeld1@mmc.org.

Authors

Deborah Bachand, Lauri Wilson, Rachel Caiola, Lynne Keller, Megan Selvitelli, Mary Jo Farley, Jennifer O'Neill, Sara Shrock, Hannah Plummer, Sally Prokey, Amy Sparks, Stephen Tyzik, Suneela Nayak, and Ruth Hanselman

Project: Epilepsy Monitoring Unit

Last Updated: June 17, 2019

Executive Sponsor: Kathryn Cope

Facilitator: Amy Sparks, Stephen Tyzik



Team Members: Deborah Bachand, Lauri Wilson, Rachel Caiola, Lynne Keller, Megan Selvitelli, Mary Jo Farley, Jenn O'Neill, Sara Schrock, Hannah Plummer, Sally Prokey

Problem/Impact Statement:

After two incidences on R6 involving patients admitted to the Epilepsy Monitoring Unit, that had high potential to impact patient safety, the R6 Team identified that there was a need for a higher level of staff and companion education around patients admitted with seizures. Both R6 staff and float companions needed to be educated on how to safely care for seizure patients, and how to better recognize and respond to seizures.

Scope:

In Scope: Epilepsy Monitoring Unit patients and R6 patients admitted for seizures
Out of Scope: R6 patients not admitted with seizures

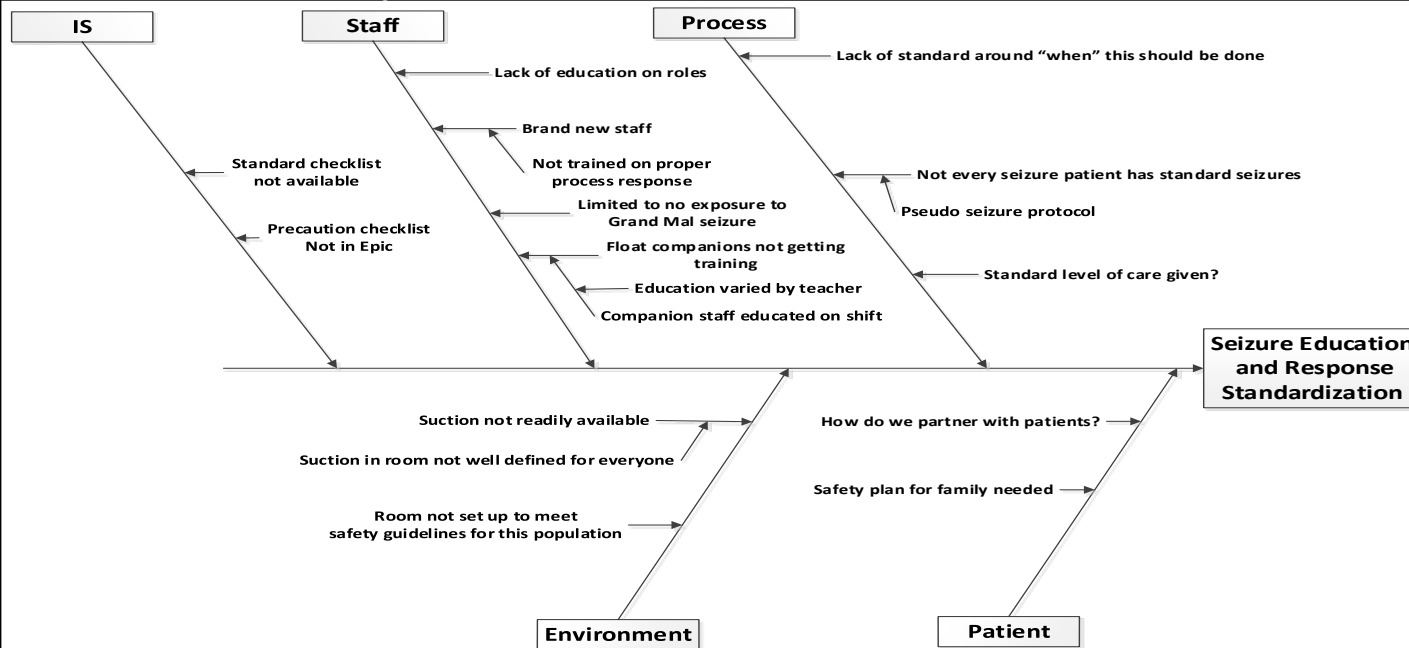
Goal/Objective:

To create a consistent tool to ensure safe and standardized care is given to our Epilepsy Monitoring Unit (EMU) patients by all R6 and companion staff.

Baseline Metrics/Current State:

Safety concerns around patients admitted for epilepsy revealed varied and lack of education on how to safely care for this patient population for both R6 and companion staff. Education depended greatly on who or where the employee received education from. It was thought that the Float Pool was educating companions on EMU patients, but weren't. The companions were then educated on shift, but the information presented varied greatly from EEG tech to RN's, CNA's, and companions. There was not a mechanism in place to ensure proper equipment was used or that companions clearly understood their role.

Root Cause Analysis:



Countermeasures

| Action | Owner | Completion Date | Status |
|---|---|-------------------|---|
| Create bedside checklist of safety measures that is reviewed at change of every shift during RN bedside report and double checked by charge RN each shift | Entire Team | October 31, 2018 | Completed |
| Create video to highlight individual roles while caring for an EMU patient | Lynne Keller coordinated video creation with R6 Team | December 4, 2018 | Completed |
| Roll out video to all R6 staff | Entire Team | January 31, 2019 | Completed |
| Weekly morning huddle, when epilepsy patient is admitted, to discuss care plan for the week. | R6 Charge Nurse, Epileptologist, Companion Coordinator, EEG Tech, Pharmacist, Neuro navigator | February 28, 2019 | Completed |
| Roll out video to all companion staff | Companion Staff and R6 Staff | February 28, 2019 | 100% of current staff trained. Ongoing process for new employees, education done each shift as needed |
| Video added to Learning Management System for new R6 staff to access. Also available for new companions and pediatric staff. | | February 28, 2019 | Completed |
| Create seizure precaution checklist in EPIC | Lauri Wilson and Sally Prokey | February 28, 2019 | Completed |

Do

Outcomes

- Zero safety events on R6 involving epilepsy patients
- 100% of R6 staff educated on tool (70 RNs and 42 CNAs)
- 100% of companion staff educated on tool
- Education now part of all new staff orientation for R6
- Every companion assigned to an epilepsy patient is asked and if necessary given training
- Increased comfort level of staff to provide safe care for epilepsy patients

Study

Next Steps

- Create standardized safety plan for when family members take the place of companion staff
- Tele-sitters video monitoring system requested for FY20 budget
- Collaborate with BBI to spread training to pediatric epilepsy patients

Act

Plan