



IMSA

Illinois Mathematics and Science Academy

2020
VIEW
BOOK



EXPLORE, LEARN AND IMPACT THE WORLD.

IMSA fosters the discoverers. The thinkers. The problem-solvers of the future who can change the world. Our mission is to ignite and nurture creative, ethical, scientific minds that advance the human condition. We are a diverse community that promotes curiosity and exploration. We're about more than great college prospects and great jobs, we're about making our families proud. We're about a better world for everyone through immersive learning experiences.

In 2017, we adopted the United Nations' 17 Sustainable Development Goals (SDGs) as a call to action that commissions us all to make the right choices now to improve life for all, in a sustainable way, for future generations.



THE GLOBAL GOALS
For Sustainable Development



DISCOVER WHAT YOU LOVE.

The more you try and experience, the more you'll discover what you love. The chance to pursue passion means you'll have a greater sense of vision and a greater chance of realizing your true potential.

At IMSA, you'll spend one day a week exploring and developing your interests and passions outside the classroom. You'll be conducting hands-on research in fields from artificial intelligence to microbiology to sociology. You'll intern at tech startups and may even have an idea for your own business.

Because all of this happens under the guidance of world-class faculty and institutional partners, you will leave IMSA with the experience to impact the world.

The world is full of possibilities. And you belong out in it.

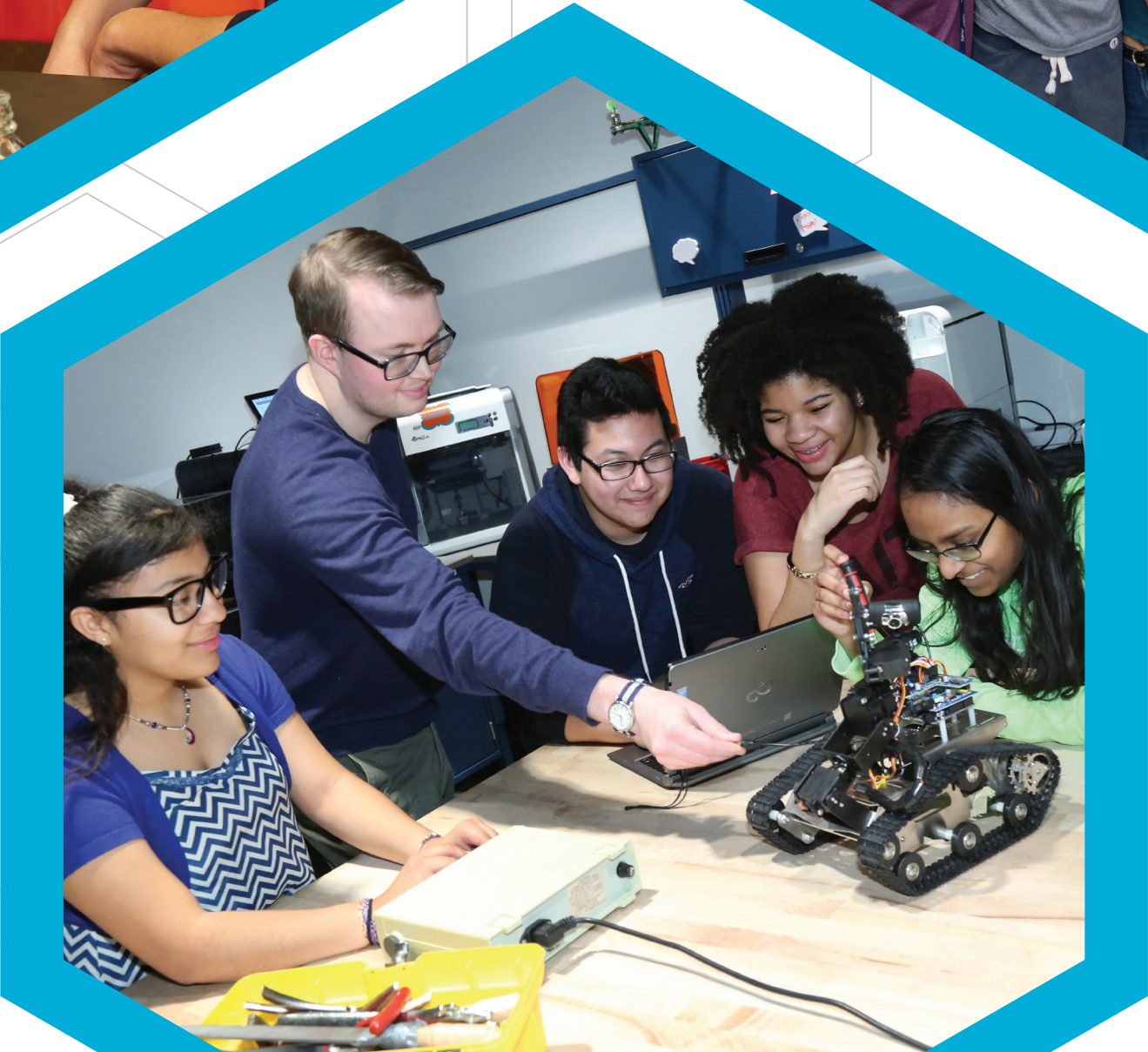


DISCOVER

You'll volunteer for
200
hours of community
service by the time you
graduate.

You'll have
75
clubs, organizations and
athletic programs to
choose from based on
your interests.

You'll spend
20%
of your time researching
or working side-by-side
with entrepreneurs.





LiveSafe[®]
at Illinois Mathematics and Science Academy



LIVE AND GROW.

IMSA is a place to fit in and branch out. You and your roommate will live in a residence hall on our Aurora campus located in a friendly neighborhood. You'll make new friends, encounter new ideas and differing values, and have the opportunity to explore 75 clubs, organizations and athletic programs offered at IMSA.

With the help of our resident counselors and an inclusive residential life curriculum, you'll build leadership skills and jump-start your social life while developing independence and responsibility in and out of the classroom.

Plus, you'll be immersed in a safe, nurturing environment with a comprehensive safety program and our 24-hour security center. With our LiveSafe® mobile app, you'll have direct access to IMSA security for easy communication of safety needs.

You'll find the residence halls are where all of the elements of IMSA fuse and where living and learning meet. Your personal growth, memories and friendships will be among your life's most treasured experiences.





CELEBRATE WHO YOU ARE.

IMSA is a residential Academy of 652 diverse students who are passionate about learning. When you live alongside others, you create life-long friendships. You build your confidence and self-reliance. You appreciate other cultures and you celebrate your own.

Our goal is to create a diverse and inclusive community of global citizens through our commitment to equity and excellence. At IMSA, all students will have the opportunity to realize their full potential and advance the human condition.

You'll keep connecting, you'll keep growing, and you'll make a difference.



LOOK WHO YOU CAN BE.

You'll be challenged with a rigorous curriculum designed to develop you into a life-long learner, problem solver and critical thinker. As you work together with your friends through our academic program, you will also meet criteria for admission to the nation's most selective colleges and universities. With innovative learning methods, close access to teachers and collaboration with businesses and institutions outside IMSA, you'll leave equipped to realize your full potential.

If we do what we know and feel is right, it is bound to happen that among our graduates there will be numbered scientists, engineers, and those who go on to earn degrees in law and letters. There are likely to be those few who create new intellectual worlds, cure a dreaded human ailment or in some other way significantly influence life on our planet.

- Dr. Leon Lederman, IMSA Founder, physicist, researcher, university professor, national laboratory director and Nobel Laureate

Just like our alumni, you'll be a leader in the business, education, and scientific sectors, leading and working at top companies and organizations including:





Most attended universities by IMSA class of 2019:

- University of Illinois at Urbana/Champaign
- University of Illinois at Chicago
- St. Louis University
- Loyola University Chicago
- Illinois Institute of Technology
- Northwestern University
- University of Chicago
- Carnegie Mellon University
- Case Western Reserve University
- Johns Hopkins University
- Massachusetts Institute of Technology
- Rochester Institute of Technology
- Stanford University
- The University of Alabama in Huntsville
- University of Michigan
- Washington University in St. Louis
- Yale University

** IMSA class of 2019 matriculated to a total of 73 different college or universities.*

APPLY BY FEBRUARY 1

Students admitted to IMSA must show a history of academic achievement, involvement in leadership and extracurricular activities and a demonstrated interest in STEM (science, technology, engineering and math).

ELIGIBILITY

IMSA serves students grades 10-12. Applicants are in the 8th or 9th grade applying for entrance into the 10th grade at IMSA.

- Must be an Illinois resident enrolled in an Illinois school at the time of application
- Must have completed Algebra I and a high school equivalent science course

REQUIREMENTS

Complete the online application at www.imsa.edu, including student essays, activity list and parent statement. You'll also need to submit:

- Evaluation forms completed by current year English, math and science teachers
- Guidance Counselor form, including official grade reports for the past 2 1/2 years
- Official SAT score report (essay not required)

COST

IMSA is tuition-free, with no charge for room and board. An annual student fee is assessed based on family size and income. No student is ever refused because of inability to pay.



José M. Torres, Ph.D.
President

Established by the State of Illinois to develop talent and leadership in science, technology, engineering and mathematics, the Illinois Mathematics and Science Academy is internationally recognized for inspiring, challenging and nurturing students who use their exceptional abilities to improve people's lives. IMSA's academically advanced residential program enables exceptional students in grades 10-12 to reach extraordinary levels of achievement.



630.907.5000 . 1500 SULLIVAN ROAD, AURORA, IL 60506-1000 . [IMSA.EDU](http://imsa.edu)

Connect with us on Facebook, Instagram and Twitter.