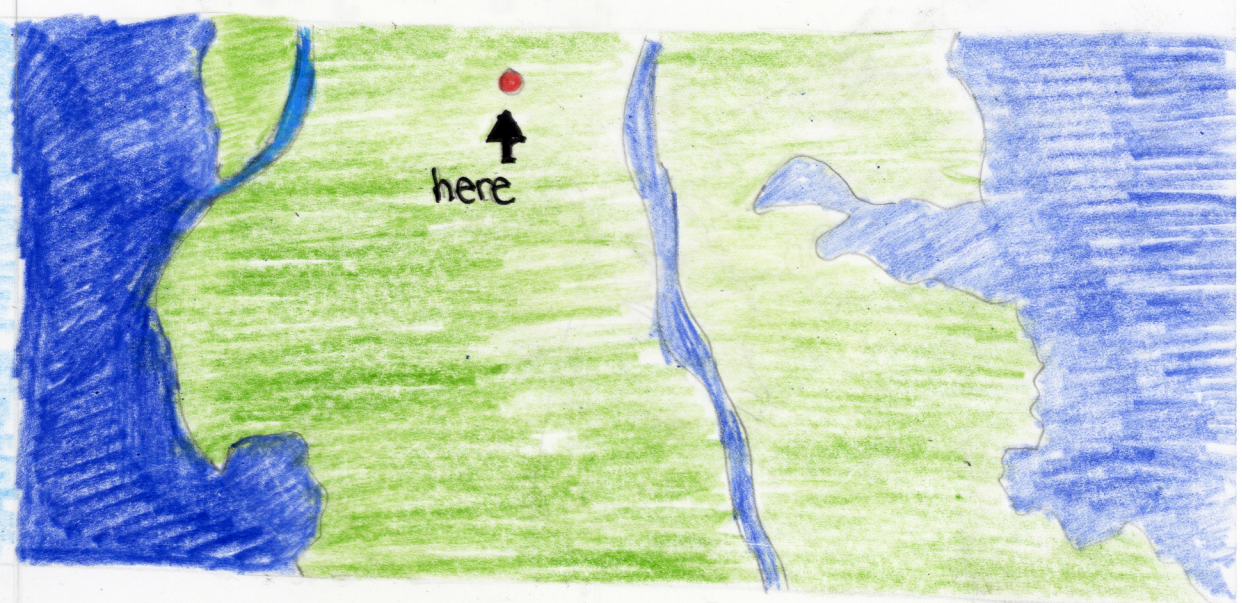


Melanoma



Cells "metastasize" into "lungs"

Kishore
Theaker
Esha
Rishu
Rishu

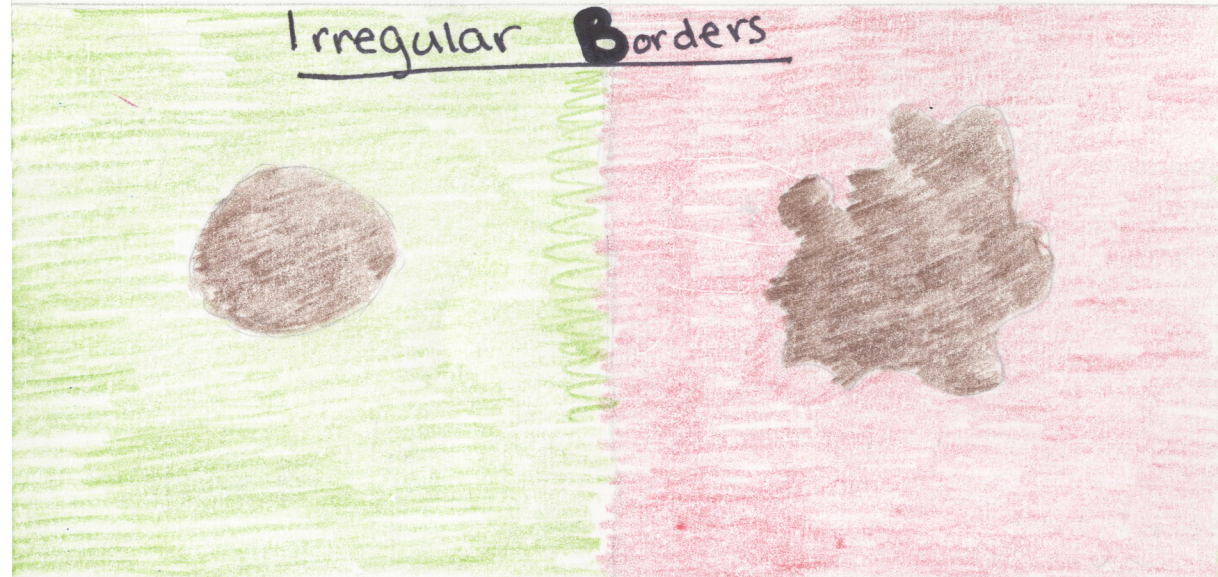


Metastasized melanoma can cause chronic cough and bloody coughs



Asymmetry

It has an irregular, asymmetrical shape



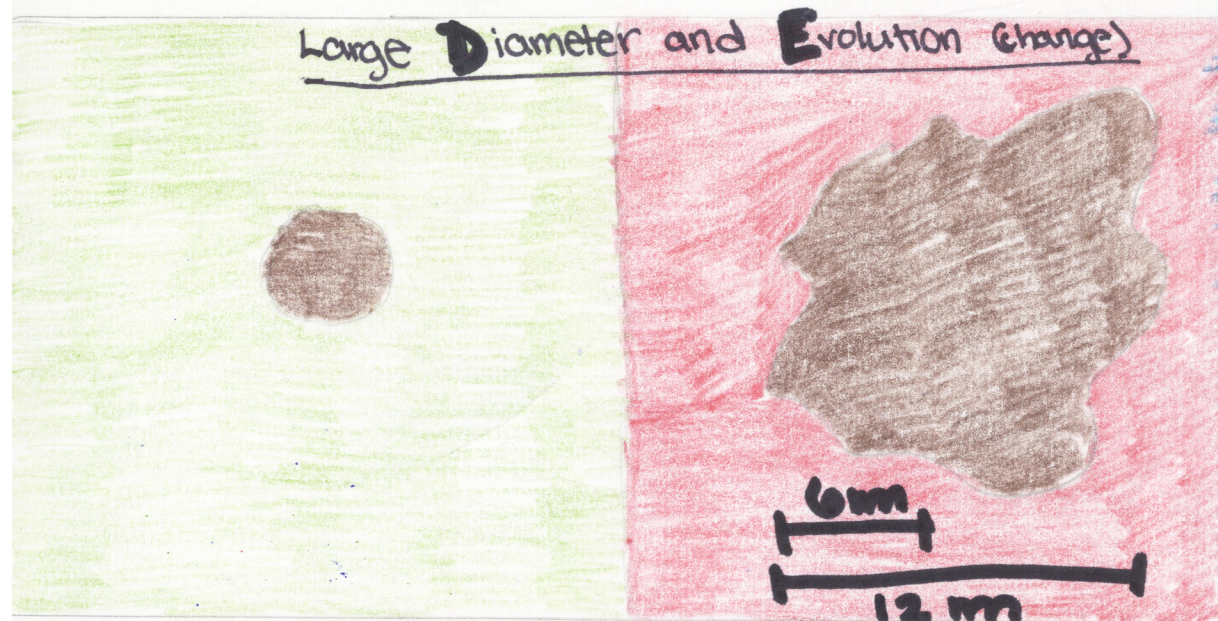
Irregular Borders

The borders are uneven and jagged.



Abnormal Colors

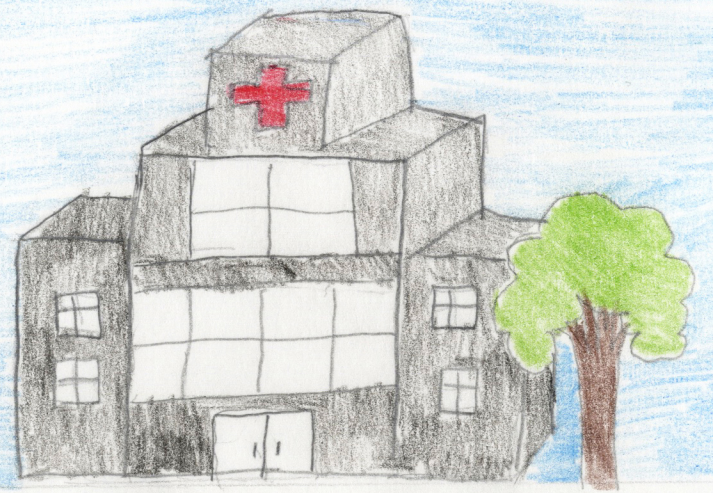
The colors are uneven or abnormal



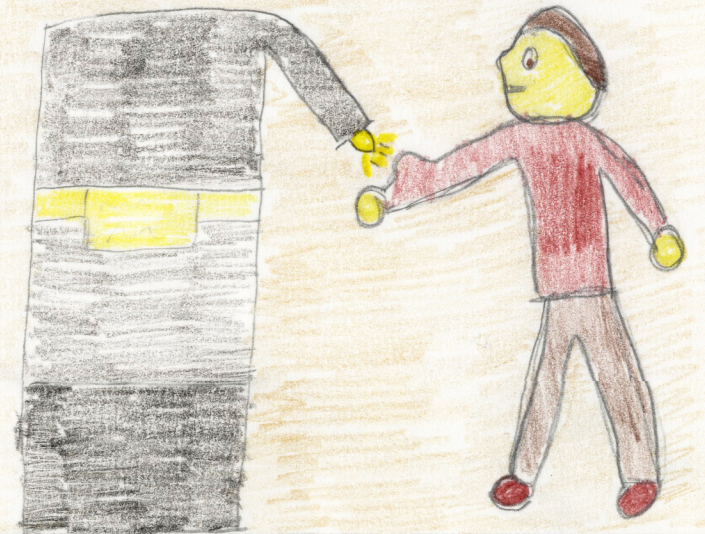
Large Diameter and Evolution (change)

It is larger than the size of a pea, and has changed over the past few weeks. Harvard also says that a mole over 6 mm could be melanoma.





If the melanoma hasn't metastasized yet, a biopsy can be used to try and remove the cancerous cells.



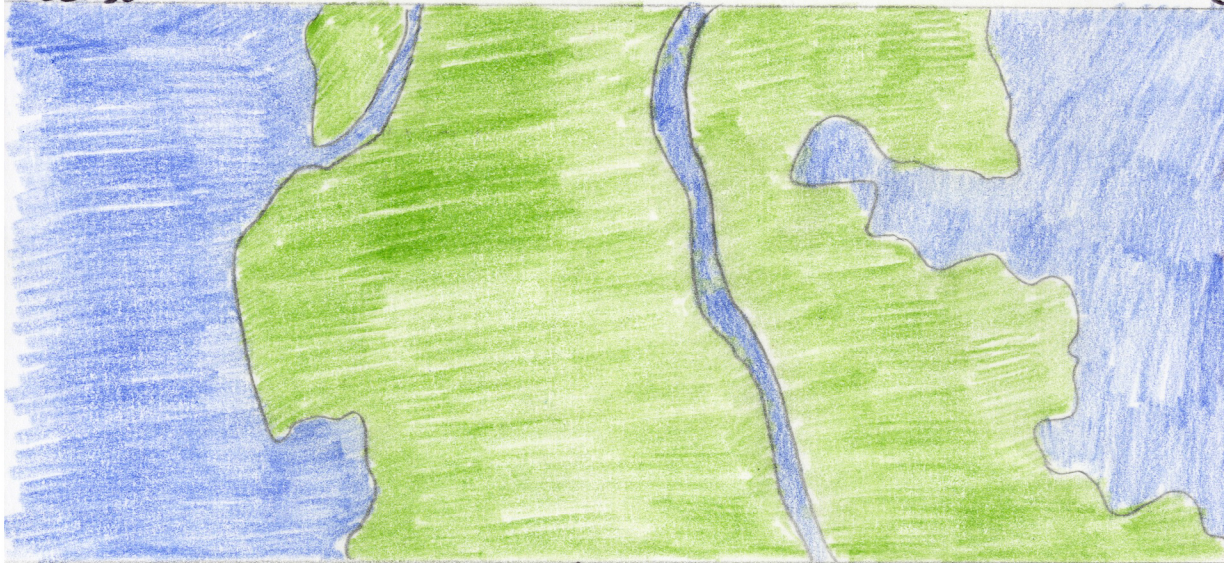
Radiation therapy damages the cellular DNA, so it is used to kill cancer cells or slow their growth.



Chemotherapy is also used to try to kill the cancerous cells, as the chemicals target rapidly dividing cells, which includes the cancer cells in addition to regular body cells.



Melanoma can be quite deadly once it metastasizes, with only 15-20% of stage 4 melanoma patients surviving at least 5 years after being diagnosed with stage 4 melanoma. * Luckily, Dr. Prashanth caught it early enough to save the world.



And so Dr. Prashanth saved the world, banishing melanoma to its alien planet for good, and everyone lived happily ever after.

The End

By Esha Dani
&
Krishna Takkar

Prarthana and Lalana