

University of New Mexico

UNM Digital Repository

Faculty Senate Meeting Minutes, 1920 - 2013

Faculty Senate

11-28-2006

Faculty Senate Meeting Minutes, 11/28/2006, p 354-379

UNM Faculty Senate

Follow this and additional works at: https://digitalrepository.unm.edu/fs_minutes

Recommended Citation

UNM Faculty Senate. "Faculty Senate Meeting Minutes, 11/28/2006, p 354-379." (2006).
https://digitalrepository.unm.edu/fs_minutes/965

This Article is brought to you for free and open access by the Faculty Senate at UNM Digital Repository. It has been accepted for inclusion in Faculty Senate Meeting Minutes, 1920 - 2013 by an authorized administrator of UNM Digital Repository. For more information, please contact amywinter@unm.edu, lsloane@salud.unm.edu, sarahrk@unm.edu.

FACULTY SENATE SUMMARIZED MINUTES

2006-2007 Faculty Senate
November 28, 2006

The Faculty Senate meeting for November 28, 2006 was called to order at 3:10 p.m. in the Lobo Room, Student Union Building. Senate President Virginia Shipman presided.

1. ATTENDANCE

Guests Present: Provost Reed Dasenbrock, Research Service Learning Program Manager Marylin Davis (University College), Deputy Provost Richard Holder, Staff Council Liaison Vanessa Shields, Patrick Vigil and Research Service Learning Program Director Dan Young (University College).

2. APPROVAL OF THE AGENDA

The agenda was approved as written.

3. APPROVAL OF SUMMARIZED MINUTES FOR OCTOBER 24, 2006 MEETING

The minutes for the October 24, 2006 meeting were approved as written.

4. PROVOST'S REPORT

The Provost reported on the following:

- Provost Reed Dasenbrock stated that there are a number of searches in process. Searches are being conducted for the Dean of Arts and Sciences, the Dean of University Libraries, the Director of the School of Public Administration, the Director of the Taos Branch, and the Director of the Los Alamos Branch.
- There needs to be a formal discussion about the Rio Rancho campus. There are many issues that will need faculty decisions. Dean Roger Schluntz (Architecture and Planning) organized a charrette. Many people from across the country participated. The charrette was an intensive design and development workgroup that produced a robust policy statement in addition to designs for the Rio Rancho campus. Ten keystone policies were recommended by the workgroup for central issues that the design needs to accomplish. A Powerpoint presentation with four central designs was shown at the charrette and will be presented to the Planning Council on Wednesday, November 29, 2006. The presentation will then be shown at the next Regents' meeting. Provost Dasenbrock encourages faculty to attend the Regent's meetings, especially those that involve Rio Rancho.
- A UNM capital campaign will be launched around July 2007. Proposals have come from every college and school. The proposals that came out of the schools and colleges were all chaired by faculty. Many issues were addressed including faculty salaries, needs assessments, etc. A feasibility study will be conducted next to determine if the proposals for the campaign are realistic and attainable. The feasibility study will most likely be conducted after the new president has been named.
- An equity study of main campus salaries has been conducted. It looked at equity in terms of gender and ethnicity. Provost Dasenbrock has seen a draft and he will meet with the committee that conducted the study within the next week. The final draft will be ready to formally release sometime the holiday break. The Faculty Senate will want to review the study and the recommendations it suggests.

5. FACULTY SENATE PRESIDENT'S REPORT

The Faculty Senate President reported on the following:

- As requested by the UNM Board of Regents (BOR), the Operations Committee sent a statement on the University of New Mexico extra compensation and paid outside consulting policy and the Anderson Schools of Management (ASM) audit report, to the BOR. Faculty Senate President Virginia Shipman, and Operations Committee members Nikki Katalanos, Bruce Williams, and Howard Snell signed the letter. As a result, BOR President Jamie Koch has asked President Shipman to chair a task force to review such polices. The committee will report to the BOR. The 2006 ASM Audit Report and the Faculty Senate Operations Committee statement will be placed on the Faculty Senate website.

- President Shipman is serving on the Anti-hate Committee. The committee is reviewing a process for filing complaints. President Shipman hopes the committee will also address prevention.
- President Shipman is also serving on the Transportation Committee. The Transportation Committee is addressing concerns of the communities surrounding the main campus.
- The reception for New Mexico state legislators and their families hosted by the Faculty Senate and the Governmental Relations Committee is November 29, 2006. The reception will be held in the Faculty Club on Wednesday from 6:00-9:00 p.m. President Shipman encouraged senators to attend and bring other faculty from their departments.
- President Shipman reminded the senate that there would be a Faculty Senate retreat to work on committee restructuring. President-elect Jackie Hood will be leading the retreat. The retreat will be held on Wednesday, December 6, 2006. The retreat will be at the Student Union Building (SUB) and will begin at 8:15 a.m. with a breakfast buffet. The primary goal is to complete the work begun at the September 26, 2006 Faculty Senate meeting to consolidate the Faculty Senate Committees. As a result, faculty governance will be strengthened. Faculty Senators, past and present committee chairs, and past and present committee members have been invited.

CONSENT AGENDA

6. APPROVAL OF FALL 2006 DEGREE CANDIDATES

Approval of the Fall 2006 degree candidates passed by unanimous voice vote of the Faculty Senate.

AGENDA TOPICS

7. UNITED WAY PRESENTATION

Senior Program Manager from the Development Office Patrick Vigil gave a presentation on the annual United Way Campaign at UNM. People in the community look to UNM for leadership. Participation in the United Way Campaign is one way that UNM can become involved in the community. Donors often inquire about UNM's community involvement and its United Way contributions. The 2005 UNM United Way Campaign raised \$17 million. More money was raised in Albuquerque last year than was raised in Los Angeles or New York City. The UNM United Way Campaign allows contributors to donate to any number of not-for-profit corporations anywhere in the world without cost. The University of New Mexico is a not-for-profit corporation that can benefit from United Way contributions. People can donate to their favorite program, their favorite cultural venue, scholarship, department, etc. Last year \$400,000 was given to community programs and UNM received \$600,000 dollars back in donations to its programs. Mr. Vigil asks that people participate as much as possible and help in any way. He also asks senators to take this message back to their departments and peers. Directing donations through the United Way would allow UNM a way to show involvement.

8. RESEARCH SERVICES LEARNING PROGRAM

Research Service Learning Program Director Dan Young (University College) and Research Service Learning Program Manager Marilyn Davis (University College) presented information about the Research Services Learning Program (RSLP). The RSLP is intended to engage undergraduate students in research projects that collaboratively designed with community partners. RSLP relies on the community-based research principles that have evolved over the last couple of decades. The program began in University College and is an off-shoot of the Freshman Programs that were started in 2000. The Freshman Programs became successful and their budgets were absorbed into the I and G Budget. The original funding source was the President's Club and its directors were looking for another project. As a result, the funding for RSLP comes from the President's Club money that is used to fund the Freshman Programs. The President's Club is money that has been donated to the President that is used for innovative purposes. Provost Dasenbrock and Assistant to the President Breda Bova supported the idea and assisted in getting funding for two years.

The program is in response to students that finished the Freshman Learning Experience and wanted to move on to something similar. RSLP is an attempt to carry on the classroom format of small, interactive seminar-type structure. RSLP is different in that the programs are deigned with community partners. A goal is that an on-going relationship with the community partners is being established. Community partners can include neighborhood associations or non-profits. The idea is that the work is on issues, questions, projects, etc., that are of real value to the community. Another goal is to involve students in courses to lead them to get a degree, either a major or minor. Departments will have a responsibility to ensure that the courses that are being involved in the RSLP actually do what the departments want them to do. The intention is that there will not be a second-rate version of

the same course. There is a commitment to the student that they will get a much deeper experience that is less broad.

Research Service Learning Program Manager Marilyn Davis (University College) is charged with connecting the university to the community. For example, city community centers have multiple needs. The City of Albuquerque is contemplating enhancing some of the community centers and Ms. Davis was approached to contact the School of Architecture and Planning and request their help in planning the 'best-space' for a children's environment. Albuquerque Reads is looking for volunteers to aid children in learning to read. Students in the RSLP have been asked to help.

In Academic Year 2007-2008 there will be stipend payments to faculty for doing extra work. Ms. Davis will negotiate logistics for faculty with the community. She will provide overview workshops for students so they understand community-based research service learning.

Research Service Learning Program Director Dan Young can be reached at 277-3355, and Program Manager Marilyn Davis can be reached at 277-8282.

9. FACULTY CLUB MEMBERSHIP AND FINANCIAL ISSUES

Professor Tim Ross (Civil Engineering), President of the Faculty Club Board, gave a status report on the Faculty Club. There has not been a Faculty Club at UNM for eighteen years. The new club has been in operation for fourteen months. Faculty Senate Past Presidents Ed DeSantis and Beverly Burris aided in the efforts to reopen a Faculty Club. Former University President Louis Caldera was instrumental in getting the building set up and renovated, but he also gave a 2-3 year grant to get the club started and build the membership.

Currently, there are approximately 290 members of the Faculty Club. For the first year, Aramark Catering waived the labor. Beginning this month the Faculty Club will have to pay for labor. Revenue is about \$14,000 per year and the labor costs will be about \$35,000 per year. Membership needs to be increased. Membership dues are five dollars per month through payroll deduction or by check. The goal is to get the membership to over 500 by the end of Spring 2007. Special breakfasts and/or lunches will be offered in the spring as "membership drives."

The Faculty Club Board has been discussing a move towards a Faculty and Staff Club. Most universities around the country have Faculty and Staff Clubs. Those that have a Faculty Only Club also have a Staff Only Club. Currently membership is for anyone that gets their contract through Faculty Contracts. For information regarding the club, please visit: <http://www.unm.edu/~fca/>. The Faculty Club is located at 1923 Las Lomas NE.

There is a Christmas Party on December 13 from 3:00 p.m. to 7:00 p.m.

10. NEW BUSINESS

No new business was raised.

11. ADJOURNMENT

The meeting adjourned at 5:00 p.m.

Respectfully submitted,

Rick Holmes
Office of the Secretary

Research Service Learning Program

connecting communities and campus

Spring 2007 RSLP Courses

Popular Culture, Media & Community Action

American Studies 200.001: Introduction to Popular Culture (3 cr)
Community Partner: Santa Barbara/Martineztown

Anthropology & Community Gardens

Anthropology 230.001: Topics in Current Anthropology (3 cr)
Community Partners: Barelvas Community Center, Barelvas Senior Center

Intercultural Communication

Communication & Journalism 314.006: Intercultural Communication (3 cr)
Community Partners: La Mesa Community Improvement Association, East Central Ministries, Mesa Verde Community Center

Human Settlements

Community & Regional Planning 376.001: Human Settlements (3 cr)
Community Partners: Santa Barbara/Martineztown Neighborhood Association, Martineztown House of Neighborly Services, Santa Barbara/Martineztown Learning Center, San Ignacio Parish, Albuquerque Interfaith

Theatre in the Community

Theatre 295/495.001/002: Theatre in the Community (3 cr)
Community Partner: Barelvas Community Center

RSLP-Affiliated Courses

Introduction to Environment, Science and Technology
American Studies 182.003: Introduction to Environment, Science and Technology (3 cr)

African American Resistance Movements of the '60s & '70s
Africana Studies 397.033: Topics (3 cr)
Community Partners: Project Share, Inc., Endorphin Power Company, Barelvas Community Center, Barelvas Senior Center, other community gardens

Building Community-Based Survival Programs

Africana Studies 397.035: Topics (3 cr)
Community Partners: Project Share, Inc., Endorphin Power Company, Barelvas Community Center,

Barelas Senior Center, other community gardens

Service Learning Program

Don Yang, PhD, Director

Sustainability in Action

Biology 402/502.021/022: Topics (3 cr)

Advanced Studies in Chicano Hispano Mexicano Studies

Chicano Hispano Mexicano Studies 490.001: Seminar (3 cr)

Community Partner: South Valley

Speaking to Community Needs

Communication & Journalism 130.037: Public Speaking (3 cr)

Community Partner: Mesa Verde Community Center

Small Group Communication

Communication & Journalism 225.001: Small Group Communication (3 cr)

Community Partner:

Exploring Schools and Teaching

Education 220.001: Exploring Schools and Teaching (3 cr)

Community Partners: Sawmill and South Valley

Exploring Education for Diversity

Education 220.002: Exploring Schools and Teaching (3 cr)

Community Partner: Ralph J. Bunch Academy

Composition II: Analysis and Argument

English 102.046: Composition II: Analysis and Argument (3 cr)

English 102.047: Composition II: Analysis and Argument (3 cr)

English 102.052: Composition II: Analysis and Argument (3 cr)

English 102.067: Composition II: Analysis and Argument (3 cr)

Community Partner: Albuquerque Public Schools After School Programs, Community Learning Partnership

Grant Writing for the Community

English 418/518.001/001: Proposal and Grant Writing (3 cr)

Community Partners: Any RSLP partners who have funding needs

Problems

Language, Literacy & Sociocultural Studies 391.015: Problems (3 cr)

Community Partner: New Mexico Voices for Children

Women, Family, & the Economy

University Honors 222.007: Sophomore University Honors Seminar (3 cr)

Community Partners: Various Albuquerque-area women's shelters

The Holocaust, Genocide, and Intolerance

University Honors 402.001: # (3 cr)

Community Partner: New Mexico Holocaust and Intolerance Museum and Study Center



University of New Mexico

Research Service Learning Program

Dan Young, PhD, Director

Dear UNM Faculty,

I would like to invite you to participate in UNM's Research Service Learning Program. The RSLP officially began this Fall semester with the funding support from the UNM President's Club and several other funders. The enclosed booklet details our Fall courses as well as those we offered in Summer 2006, and it acknowledges all of our current funders and community and campus partners. Here are some of goals the RSLP seeks to achieve:

- To provide another way for UNM to fulfill its commitment to the people of our State.
- To increase undergraduate students' awareness of the process and importance of research.
- To help retain students who want to experience the application of theoretical knowledge to issues of importance to them.
- To provide opportunities for faculty to contextualize their teaching in real-world settings.

The RSLP introduces undergraduate students to research through participation in projects that are designed collaboratively with members of the community. Some of the salient points of these collaborations are:

- Projects are designed in collaboration with community partners.
- Projects are designed as ongoing partnerships.
- UNM courses that fulfill Core or department major requirements are preferred.
- Courses can be sequenced to work with the same community partner over multiple semesters.
- Research findings are used to implement action in the community.

To learn how you can become involved in teaching an RSLP course, please go to our website at <http://www.unm.edu/~rslp/>, click on "For UNM Faculty", then select "How to get involved."

If you choose to become involved, the RSLP will support your work through:

- Increased compensation for the additional work involved.
- Help in identifying community partners.
- Support from community partners.
- Support in arranging community-based field component.
- Funds for materials and supplies.
- Help in promoting the course and recruiting students.

Please consider how we can work together to provide greater benefit to our students and our community.

Sincerely,

Dan Young

360.

UNM/Research Service Learning Program
 Community Outreach Report: Marilyn Davis 277-8282
 Projects for Faculty Consideration - Spring 2007 and Academic Year 2007/2008

	Organization	Proposed Project	Timeline	Comments
1.	NM Voices for Children	<p>Fact Sheets Legislative Briefs to distribute to Legislators</p> <p>Community Information Briefs: Child Subsidy Campaign;</p> <p>Several courses needed</p>	<p>(Assigned)</p> <p>College of Education</p> <p>Spring Semester</p> <p>Seeks a continuous long-term relationship</p>	<p>NMVC engages in research and analysis of the following: 1) Race Matters; 2) Education; 3) Race & Media; 4) Child Welfare; 5) Behavioral Health; 6) Adolescent Reproductive Health and; 7) Juvenile Justice.</p> <ol style="list-style-type: none"> 1. Each course will adopt one of the above topics and students will be provided the data and analysis developed by NMVC and engage in the writing of "Fact Sheets" for community and policy distribution through various mediums. 2. Spring semester will begin the Childcare/ Child Subsidy Campaign in preparation for Tax time. A course would be asked to prepare informational materials to inform parents of the various tax benefits available to them.
2.	NM Office of African American Affairs	<p>Voter Restoration Rights</p> <p>Health Matters in the AA Community</p>	<p>(Available)</p> <p>Spring Semester 07 through Spring 09</p> <p>Seeks a continuous long-term relationship</p>	<p>NMOAA seeks to partner with UNM/RSLP to research Restoration Rights for former inmates. The course will be asked to: 1) research the topic, identify barriers, challenges, and opportunities; 2) provide the NMOAA with the findings in a formal paper; 3) prepare a "Fact Sheet" for distribution with salient "Register to Vote" how to for former inmates; 4) design/recommend a process for advising former inmates of their Restoration Rights.</p>

11/28/2006



Research Service Learning Program

[Faint, mostly illegible text from the reverse side of the page, including a large handwritten '360' and various lines of printed text.]

328

361

UNM/Research Service Learning Program
 Community Outreach Report: Marilyn Davis 277-8282
 Projects for Faculty Consideration - Spring 2007 and Academic Year 2007/2008

	Organization	Proposed Project	Timeline	Comments
3.	Martineztown House of Neighborly Service	After-school Tutoring Collecting Community Health Survey data in Spanish Grant Writing	(Available) Spring 2007 – Seeks a continuous long-term relationship	The House of Neighborly Service is celebrating its 79 th year in the Martineztown Community. They seek UNM/RSLP participation to: 1) work with children in the area of Literacy; 2) Conduct Community Health Surveys in Spanish; 3) Translate Community Health data into Spanish; 4) Build capacity through grant writing;
4.	Albuquerque Public Schools Black Student Unions (BSU)	Collaborative Service Learning Student Achievement Gap Matters	(Assigned) Spring 2007 UNM Honors	51% of African American public high school graduates needed to take remedial courses in numeracy and/or literacy in New Mexico. African Americans are 3% of the PS Enrollment in New Mexico. The APS BSU faculty are seeking: A course that is willing to co-construct a survey with the APS BSU students and co-conduct focus groups to ask students in each of the 11 High Schools why the student achievement gap exist from their lens. The course would collaboratively collect and analyze the data and provide the APS BSU Faculty with a Summary Report and recommendations for presentation to the APS School Board based on the findings. In Progress: A grant is being applied for in support of this initiative as well.

200

UNM/Research Service Learning Program
 Community Outreach Report: Marilyn Davis 277-8282
 Projects for Faculty Consideration - Spring 2007 and Academic Year 2007/2008

Organization	Proposed Project	Timeline	Comments
1. Middletown House of Neighborhood Services	After-school tutoring Cultural Community Health Survey data in Spanish	(Available) Spring 2007	The House of Neighborhood Services is scheduled in 2007 year in the Middletown Community. They seek UPLINK's participation in: 1) work with children in the area of literacy; 2) Contact Community Health Survey in Spanish; 3) Tutoring Community Health care into Spanish; 4) Data entry through excel using
4. Adolescent Health Center (AHC) Black Student Union (BSU)	Collaborative Services Student Assessment Gap Survey	(Available) Spring 2007 Until Spring	AHC of African American students and staff members intend to take a survey of the Black Student Union (BSU) in the area of Adolescent Health Center. The AHC BSU leaders are seeking a course that is willing to work with a survey on the AHC BSU students and to contact faculty to help students in each of the 11 high schools with the survey. The survey will be conducted in the fall and the results will be presented to the AHC School Board and community members for presentation to the AHC School Board in the spring. A grant is being applied for in support of the initiative as well.

	Organization	Proposed Project	Timeline	Comments
5.	Trumbull Village	Demographic Data Collection	(Available) Spring 2007	Trumbull Village is a new association committed to addressing the needs of the Asian American Community. The association seeks survey data and asset mapping to identify the community.
6.	ENLACE Comunitario	Collect existing surveys related to domestic violence in Spanish speaking communities and provide a synopsis of each	(Possibilities) Fall 2007: Provide office assistance in translating documents into Spanish. Spring 2008: Review outcomes of the data analysis and develop Briefs and Fact Sheets.	This partner seeks a long-term relationship to: 1) identify existing survey instruments (survey review) used to collect data on domestic violence; 2) de-brief the outcomes of the surveys; 3) provide Comunitario with a synopsis of the collected surveys and the effectiveness related to survey participation and outcomes.

1	Albuquerque Reads	Literacy Project Commitment to Tutor K-3 grades.	(Assigned) English 102	Students will be trained to deliver "Albuquerque Reads" a packaged reading program -3 hours per week at specific APS sites.
2	Community Recreation Education Initiatives	24 Sites: Literacy, Environmental design, architectural planning for best use. Restructuring of floor plans, space usage, etc. for "inclusion" of all children Physical fitness; Coaching; Refereeing; etc. Ethnography of historical neighborhoods.	(Available)	This partner is the City of Albuquerque There are 24 City supported Community Centers in Albuquerque. Each Center supports a unique residency with its own cultural, social, structural and infrastructure needs.
3	Albuquerque After School Programs in Partnership with The Community Learning Partnership	Engage students in day school related programs and projects in an after-school setting.	(Assigned) English 102	

Community Outreach Report: Marilyn Davis 277-8282
 Projects for Faculty Consideration - Spring 2007 and Academic Year 2007/2008

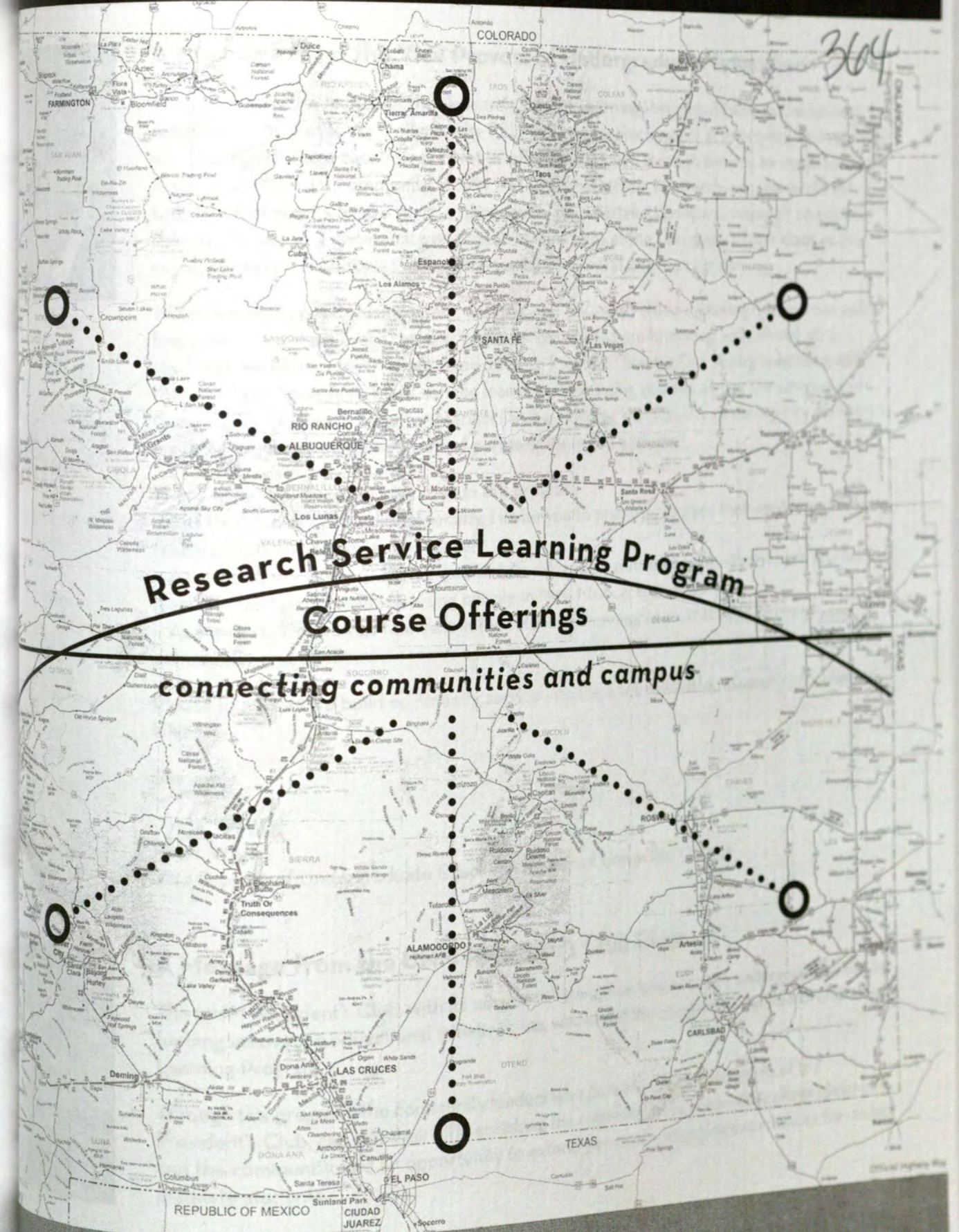
	Organization	Proposed Project	Timeline	Comments
7.	Albuquerque Reads APS/Chamber of Commerce	Literacy Project Commitment to Tutor K-3 grades.	(Assigned) English 102	Students will be trained to deliver "Albuquerque Reads" a packaged reading program -3 hours per week at specific APS sites.
8.	Community Recreation Education Initiatives CommUNITY Centers	24 Sites: Literacy, Environmental design, architectural planning for best use. Restructuring of floor plans, space usage, etc. for "inclusion" of all children Physical fitness; Coaching; Refereeing; etc. Ethnography of historical neighborhoods.	(Available)	This partner is the City of Albuquerque There are 24 City supported Community Centers in Albuquerque. Each Center supports a unique residency with its own cultural, social, structural and infrastructure needs.
9.	Albuquerque After School Programs in Partnership with The Community Learning Partnership	Engage students in day school related programs and projects in an after- school setting.	(Assigned) English 102	

303

<p>University of New Mexico Department of Geography 215 North Central Avenue, Room 100 Albuquerque, NM 87131-5000 Phone: (505) 277-1000 Fax: (505) 277-1001 Email: geog@unm.edu</p>	<p>University of New Mexico Department of Geography 215 North Central Avenue, Room 100 Albuquerque, NM 87131-5000 Phone: (505) 277-1000 Fax: (505) 277-1001 Email: geog@unm.edu</p>
---	---

The University of New Mexico

304



University College
Research Service Learning Program
Summer 2006 - Spring 2007 Course Offerings

A Message from the Vice Provost of Undergraduate Education



This fall marks the launch of the Research Service Learning Program (RSLP) as the newest initiative from University College. The RSLP is a pilot project aimed at improving and remodeling undergraduate education at UNM by offering freshmen through seniors an opportunity to learn with and from community faculty and UNM instructors in a hands-on, real world setting. RSLP students have a unique opportunity to undertake significant research on socially relevant issues in a community environment right here at the University's front door as they conduct research on issues along Albuquerque's Central Avenue corridor.

When we envisioned this program, we imagined 500-1000 students taking our courses within five years. Two weeks into the first semester our classes are brimming with almost 400 students, and far exceeding our expectations. Program Director Dan Young is working with the UNM community to build service learning into existing courses across the campus and Community Outreach Director Marilyn Davis is building our network of community partners to create a large and sustained web of partnerships in this endeavor.

There truly is a place for everyone in this program:

- As UNM faculty and adjunct faculty, I invite you to propose courses that would benefit from research in a service oriented model.
- As community leaders, I invite you to take advantage of the opportunity to teach and learn from the best and brightest young people in New Mexico, our students.
- As funders, I invite you to invest in the future of meaningful partnerships between community and academy.

Please join us as we build community service into the undergraduate research curriculum at UNM.

Sincerely,

Peter White

Vice Provost of Undergraduate Education & Dean of University College

A Message from the UNM President's Club Chair



The UNM President's Club, with its mission to strengthen and enhance undergraduate life by funding innovative educational initiatives, has welcomed the creation of the Research Service Learning Program.

Through the program, the community leaders who comprise the membership of the President's Club, can see their gifts enriching the relationship between the college classroom and the community, and an opportunity to extend personally engaging experiences for undergraduate students.

Sincerely,

Peggie Findlay

UNM President's Club Chair

Why be a part of the Research Service Learning Program?

The Research Service Learning Program (RSLP), coordinated within University College, engages undergraduates with faculty and graduate students in community-based research/service projects that respond to real-life human needs and concerns.

In a **research** program, the RSLP provides undergraduates with an engaging, hands-on introduction to research methods and questions. The Program deepens UNM's important function as New Mexico's flagship research institution by applying its research and resources to pressing community needs. Faculty and students will work with community residents and organizations to identify and address useful community projects.

In a **service** program, RSLP students help UNM fulfill its civic responsibility. The Program provides a way for students to contribute to the wellbeing of our community. The Program demonstrates UNM's desire to be an active partner in New Mexico's development and provides UNM students with the awareness, knowledge, and skills needed to address social and economic issues in New Mexico communities.

In a **learning** program, the RSLP is grounded in essential disciplinary content and knowledge. The Program uses experience-based teaching that makes for deeper, more durable, more socially-relevant learning. Students in the program will experience the complexities of real-life situations and use an interdisciplinary approach organized around themes such as health, education, community development, environmental sustainability and economics.

As a **program**, the RSLP will develop long-term collaborative relationships with community partners. To address long-term questions and establish enduring relationships with the community, we will look beyond single semesters and plan for sequences of courses that enable students to engage in all aspects of complex academic work. Students will learn the art of working with the community to research a problem, develop a plan of action, implement the plan, evaluate the plan, and disseminate the findings. Students participating in different RSLP courses will convene in research symposia to discuss common issues from the perspectives of multiple disciplines and communities; they will present their findings at the annual Undergraduate Research and Creativity Symposium and other forums.

Being part of the **Research Service Learning Program** means learning how to make important differences in the world.

Research Service Learning Program

367

The Research Service Learning Program is an initiative of University College at the University of New Mexico, funded through the generosity of the President's Club, the McCune Charitable Foundation, PNM Foundation, the Albuquerque Community Foundation, and Citi Cards. We are pleased additional funders have expressed interest in supporting our program.

The RSLP is dedicated to enhancing undergraduate education by providing UNM's students with opportunities to learn and with our neighboring communities.

RSLP projects are identified and implemented in collaboration with our community partners, which include neighborhood associations and non-profit agencies. It is equally important to us to provide engaging and rigorous academic experiences for our students as well as valuable research and service for our community partners. Our commitment to community means that our projects will extend over several semesters to ensure that important issues are adequately addressed.

For more information, contact:
Dan Young, Director, RSLP
505-277-3355
rslp@unm.edu

Visit our website at: www.unm.edu/~rslp

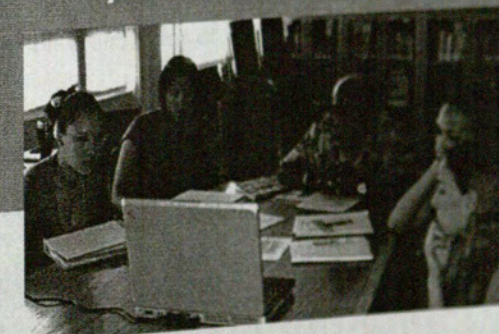
Exploring Activism and Organizing for Community Service Learning

African American Studies 297.370: Topics (3 cr)

Meeting Days and Time: MTWTF 10:30-12:30

Meeting Location: Mesa Vista Hall, 4th Floor Conference Room

Instructor: David Hilliard



Course Description: This course will introduce students to the theoretical and practical training they need to assess the community environment, navigate through political infrastructure and develop plans to address and conquer problems identified in collaboration with community groups.

Community Partners: Project Share, Inc., Endorphin Power Company.

Speaking to the Needs of La Mesa Community

Communication & Journalism 130: Public Speaking (3 cr)
Meeting Days and Time: MTWTF 11:40-1:40
Meeting Location: Ortega Hall, Room 241
Instructor: Bhavana Upadhyaya



Course Description: Students in this introductory course in public speaking will learn the skills of oral presentation in the context of the needs of community partners. Students will speak on topics of relevance to middle and high school students, such as staying in school, how to maintain a GPA for university scholarships, and how to get parents involved in community.

Community Partners: Mesa Verde Community Center Summer School Program

Highway 66 Revisited: Documenting Contemporary Route 66

Media Arts 216: Field Production (3 cr)
Meeting Days and Time: MTWTF 1:00-5:00
Meeting Location: CERIA, Room 365
Instructor: Robert Russell

Course Description: Route 66—the Mother Road—still has stories to tell. Be a part of a video production team. Go into the community to look for stories. Learn how to produce a 10-12 minute video. Document a theme related to Route 66 between the Rio Grande & San Pedro. Explore different styles of video documentary. Documentaries do more than give information: they tell a story.

Leadership in Community Organizing

University 291: Seminar in Leadership and Mentoring (3 cr)
Meeting Days and Time: MTWTF 5:00-7:15
Meeting Location: Dane Smith Hall, Room 232
Instructor: Kiran Katira

Course Description: UNM Service Corps students will learn the leadership skills necessary for involvement in community development projects.

Popular Culture and Identity in the Santa Barbara-Martineztown Community

American Studies 184.002: Introduction to Popular Culture (3 cr)

Call Number: 24254

Meeting Days and Time: TR 2:00-3:15

Meeting Location: Ortega Hall, Room 107

Instructor: Andrew Marcum



Course Description: The course casts a critical eye on American advertising, art, music, sports, and television to examine the ways in which U.S. popular culture and mass media influences our everyday lives. Exploring such possible themes as "place and space," "art and community activism" and the formation of community and individual identities, we'll apply our insights outside the classroom in a collaborative community-based service learning project co-designed with neighborhood residents.

Community Partner: Santa Barbara-Martineztown

A Sense of Place: Understanding Place in the Barelvas Community

Anthropology 340.008: T: Community-Based Anthropological Research (3 cr)

Meeting Days and Time: TR 2:00-3:15

Meeting Location: Anthro Annex, Room 120 & Barelvas Community Center

Instructor: Sean Bruna



Course Description: Want to learn and practice anthropology outside the classroom? In this course, students learn and apply a variety of urban anthropology field research methods in a community-based research project.

Community Partner: Barelvas Community

Speaking to the Needs of La Mesa Community

Communication & Journalism 130.139: Public Speaking (3 cr)

Call Number: 14653

Meeting Days and Time: MW 6:00-8:00 *This is a second eight weeks course*

Meeting Location: Sara Reynolds, Room 102 & La Mesa Community Center

Instructor: Bhavana Upadhyaya



Course Description: Students in this introductory course in public speaking will learn the skills of oral presentation in the context of the needs of community partners.

Community Partners: La Mesa Community Improvement Association, Weed and Seed, St. Joseph Catholic Health Center, The Community Health Program Partnership, Hablos Parent Group, Head Start, East Central Ministries, Habitat for Humanity, Endorphin Power Company, Vietnamese Community Organization, La Mesa Presbyterian Church, Mesa Verde Community Center.

Discovering an Intercultural Community

Communication & Journalism 293.001: T: Community-Based Research (3 cr)
Course Number: 23077
Meeting Days and Time: TR 2:00-3:15
Meeting Location: Johnson Center, Room 118 & La Mesa Community Center
Instructor: Bhavana Upadhyaya



Course Description: Hidden within Albuquerque is an international intercultural community. Join us in discovering this community while learning intercultural communication and applying communication research methods in a live community-based project! Come while you learn! Students will organize an intercultural meet and greet event for community members and all community organizations.

Community Partners: La Mesa Community Improvement Association, Weed and Seed, St. Joseph Catholic Health Center, The Community Health Program Partnership, Hablos Parent Group, Head Start, East Central Ministries, Habitat for Humanity, Endorphin Power Company, Vietnamese Community Organization, La Mesa Presbyterian Church, Mesa Verde Community Center

Sociology for the Community: Finding Research Projects that Matter

Sociology 280.005: Introduction to Research Methods (3 cr)
Course Number: 12395
Meeting Days and Time: TR 8:00-9:15
Meeting Location: Mitchell Hall, Room 204
Instructor: Rebel Palm-Aitchison



Course Description: Community Partners: The Endorphin Power Company, Project Nature, Inc., and other non-profit organizations.

Planning for the Future of Santa Barbara-Martineztown

Community & Regional Planning 265.002:
Community Planning: Concepts and Methods (3 cr)
Course Number: 24498
Meeting Days and Time: TR 2:00-3:15
Meeting Location: Architecture & Planning, Room 114
Instructor: Mayra Madriz



Course Description: This course will explore the tools available to planners for supporting traditional neighborhoods. We will work in cooperation with the neighbors and residents of Santa Barbara-Martineztown in creating a strategy for their community.

Community Partner: Santa Barbara-Martineztown

Drama in Barelás: the Drama of Barelás

Theatre 295.001: T: Theatre in the Schools (3 cr)

Class Number: 22505

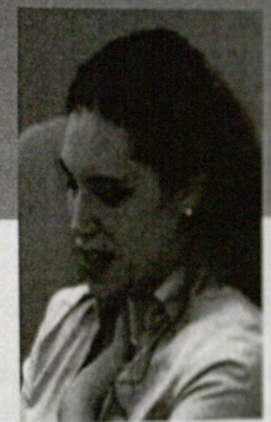
Meeting Days and Time: TR 2:00-4:00

Meeting Location: Center for the Arts, B427 & Barelás Community Center

Instructor: Anna Saggese

Course Description: In this hands-on theatre class, UNM students will work with the Barelás Neighborhood to create a script and mount a theatre piece based on the concerns or issues of the community. Upper division students may register for Theatre 295.001.

Community Partner: Barelás Community Center



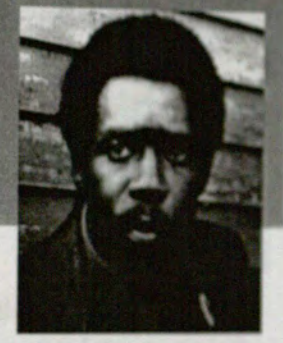
Faded, illegible text on the left page, likely bleed-through from the reverse side.

Additional faded, illegible text on the left page, including what appears to be a small graphic or logo near the bottom.

Additional faded, illegible text on the right page, including a dotted line at the bottom.

African American Resistance Movements in the 50s, 60s and 70s

African American Studies 397.033: (3 cr)
Call Number: 21561
Meeting Days and Time: TR 9:30-10:45
Meeting Location: Mitchell Hall, Room 116
Instructor: David Hilliard



Course Description: The history of African American resistance movements of the twentieth century were spawned in response to the continuing and heightening repression of blacks. We will review the history of resistance movements for black freedom of the 50s, 60s, and 70s, and explore theories that drove these movements and made them models for worldwide struggles for civil and human rights, particularly in the case of the Black Panther Party. Students will apply learning by participating in community service projects that will empower them to find viable solutions to problems we face today. (Note: this course is also offered for graduate credit as HIST 666.004).

From Black Panthers to Hip Hop: Community Activism and Service Learning

African American Studies 397.035: (3 cr)
Call Number: 24983
Meeting Days and Time: TR 2:00-3:15
Meeting Location: Mitchell Hall, Room 208
Instructor: David Hilliard



Course Description: Explore the cultural and political heritage of the Black Panther Party for Self Defense and how that heritage fostered the birth of Hip Hop culture. Taught by David Hilliard, former Chief of Staff of the Black Panther Party, discussion will include the institutionalization of BPP Programs (the Breakfast Program, Economic Democracy, Free Health Clinics, Headstart) and the role of Hip Hop activism today in continuing that legacy. This course centers on a community service learning project. Guest lecturers will include Elaine Brown, former Chairperson of the Black Panther Party, UNM's Dr. Finnie Coleman who teaches Hip Hop Culture, Rap artists "The Black Panther Fugitives," and prospective guests from the renowned Hip Hop community. (Note: this course is also offered for graduate credit as HIST 666.004).

Community Partners: The Endorphin Power Company, Project Share, Inc., and other non-profit organizations. This course will continue the work initiated by students in African American Studies 297 during Summer term.

Sustainable Ecology

Biology 310.001: Principals of Ecology (3 cr)
Call Number: 10441
Meeting Days and Time: TR 12:30-1:45
Meeting Location: Dane Smith Hall, Room 331
Instructor: Bruce Milne



Course Description: A comprehensive survey of the ecology of individuals, populations, communities and ecosystems.

Sustainability in Action

Biology 402/502.034: T: Sustainability in Action (3 cr)
Call Numbers: 24293/24294
Meeting Days and Time: TR 9:00-12:00
Meeting Location: Ortega Hall, Room 313
Instructor: Fiona Sinclair



Course Description: Connecting the shared global problem of climate change with a local solution Sustainability in Action will instigate collaborations to connect UNM with the wider New Mexico community. We will learn how to produce biodiesel in an open source AppleSeed Processor and demonstrate this process at schools and in communities. The purpose is to facilitate dialogue and demonstrate the interconnected nature of the sustainability paradigm, while promoting sustainable practice by example. Biodiesel is a renewable fuel that offers an opportunity to improve air quality, reduce our dependence on foreign oil and shape consciousness concerning the connections between consumption, resource wars, and global environmental devastation.

Grant Writing for Community Development

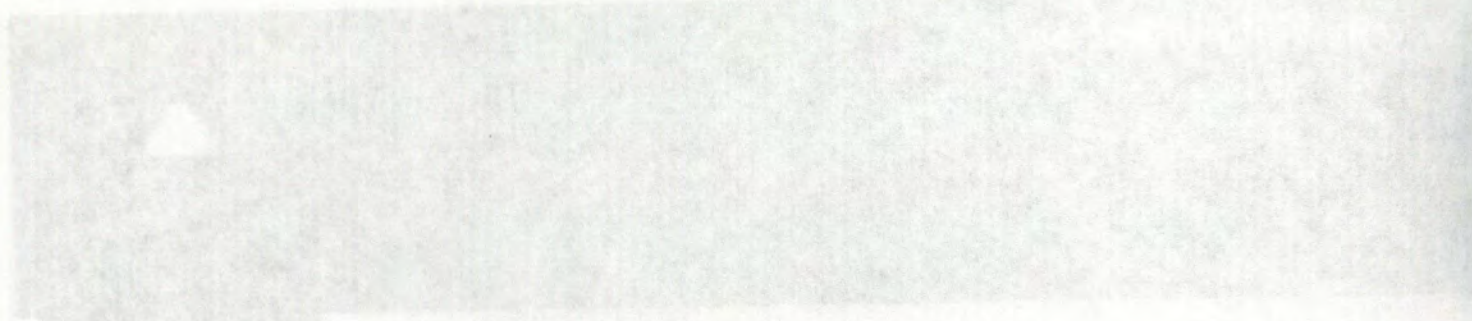
English 418/518.002: Proposal and Grant Writing (3 cr)
Call Number: 16169/16534
Meeting Days and Time: TR 12:30-1:45
Meeting Location: Mitchell Hall, Room 214
Instructor: Valerie Thomas



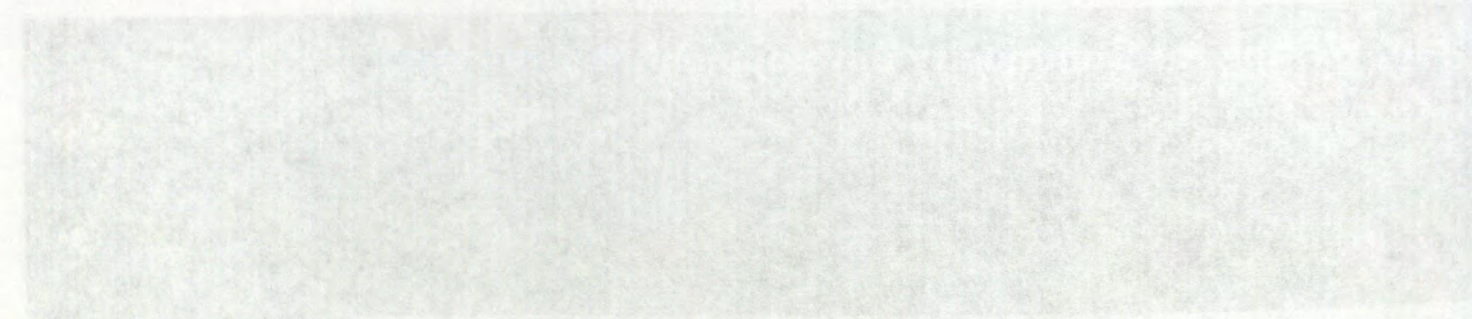
Course Description: Approximately 40 upper-division and graduate students will be taking my Grant and Proposal Writing courses this semester. As the major assignment for the semester, students will write a real grant proposal. If you join our team, a member of your organization will work with one or more grant-writers-in-training, providing them with information and guidance so they can write a proposal for one of your organization's projects. By the end of the semester, the students with have completed a proposal for your organization that you can submit for funding. If you are interested in working with our students, please send a short description of your organization and a project you would like to find funding for to Valerie Thomas at vthomas@unm.edu.

Community Partner: Various neighborhood associations and non-profit organizations.

373



Course Description: Connects the local, global, and national climate change with a local solution. Students will explore the local climate change with the local physics community. The local climate change is an interdisciplinary approach to environmental education. The course will explore the local climate change with the local physics community. The local climate change is an interdisciplinary approach to environmental education. The course will explore the local climate change with the local physics community.



Community Partner: Various neighborhood organizations and non-profit organizations. The course will explore the local climate change with the local physics community. The local climate change is an interdisciplinary approach to environmental education. The course will explore the local climate change with the local physics community.

Community Partner: Various neighborhood organizations and non-profit organizations. The course will explore the local climate change with the local physics community. The local climate change is an interdisciplinary approach to environmental education. The course will explore the local climate change with the local physics community.

374

Legacy of Gender, Race and Class: Women and Power

University Honors 121.002 & 121.018: Legacy of Gender, Race and Class: Women and Power (3 cr) – Two Sections

Call Numbers: Contact University Honors

Meeting Days and Time: M 1:00-3:30 and W 1:00-3:30

Meeting Location: Student Health Center, Room 28

Instructor: Sheri Karmioli



Course Description: This legacy class will examine the depiction of women in literature as a locus of power, as well as an image of corruption. We will consider a variety of topics, such as the kinds of power that women wield and how they have used sexuality to seize power. We will also explore popular images of women as temptress, sorcerer, and seducer. Through our readings this semester, we will examine how the earliest depictions of women in literature have created a legacy that informs our society today. We will not limit ourselves to any one genre. Instead, we will read poetry, drama, short stories, diaries, and essays. We will begin the semester with the Old Testament and the stories of Eve, Esther, and Ruth. We will continue with a selection of plays, such as Euripides' Medea, Seneca's Medea, and we will read poetry, both written by women and about women. We also won't ignore Chaucer as we read what the Wife of Bath has to say about marriage and men and the opportunities available to women. Kate Chopin's short novel, The Awakening, will show us what happens to women who try to seek autonomy for themselves. Because Legacy classes seek to make the past relevant, this course will contain a component of Research Service Learning. Each of you will work in a small group with 2-3 other students to identify and interview women who occupy either ethnic or minority positions or who have in some manner been denied opportunities that are available to other women. Within your groups, you will research available community services, such as free legal advice, housing and food sources, child care and health/ medical assistance, and education, as well as any other resources that might assist these women in creating their own powerful lives.

Community Partner: Albuquerque-area Women's shelters.

375
Fall 2006 - Other Service-Learning Courses

Engaging Community through Native American Studies

Native American Studies 150.629: Introduction to Native American Studies (3 cr)
Call Number: 22136
Meeting Days and Time: TR 9:30-10:45
Meeting Location: Mesa Vista Hall, Room 3082
Instructor: Tiffany Lee



Course Description: This course is designed to introduce you to the significance of Native American Studies through an interdisciplinary approach. You will read, consider, reflect upon, analyze, and respond to materials that focus on four areas within Native American Studies: Arts and Literature, Education and Language, Culture and Environment and Leadership and Self-Determination.

Assignments will include small group research presentations, local field trips, and an experiential project designed to enhance your learning. The project will benefit a local Native American organization, school, or tribal community. Most importantly, the project will be designed by the Native community so that a direct need or interest of the community is being fulfilled.

Community Partner: NACA, National Indian Youth Council, Pueblo Cultural Center Museum, and American Indians for Opportunity.

Engaging Community through Native American Studies

Native American Studies 315.001: Language Recovery, Revitalization, and Community Renewal (3 cr)
Call Number: 11336
Meeting Days and Time: TR 2:00-3:15
Meeting Location: Dane Smith Hall, Room 132
Instructor: Tiffany Lee



This course is designed to introduce you to the significance of Native American Studies through an interdisciplinary approach. You will read, consider, reflect upon, analyze, and respond to materials that focus on four areas within Native American Studies: Arts and Literature, Education and Language, Culture and Environment and Leadership and Self-Determination.

Assignments will include small group research presentations, local field trips, and an experiential project designed to enhance your learning. The project will benefit a local Native American organization, school, or tribal community. Most importantly, the project will be designed by the Native community so that a direct need or interest of the community is being fulfilled.

Community Partner: NACA, National Indian Youth Council, Pueblo Cultural Center Museum, and American Indians for Opportunity.

Legacy of Civic Responsibility: Exploring the "Soul of a Citizen"

University Honors 121.015: Legacy of Civic Responsibility: Exploring the "Soul of a Citizen" (3 cr)
Call Number: Contact University Honors
Meeting Days and Time: T 4:00-6:30
Meeting Location: Student Health Center, Room 8
Instructor: Dawn Stracener

Course Description: Students in this seminar will answer the question: What are the essential components of a democratic civic responsibility? First, we will work together to develop an intellectual understanding of the meaning of 'democratic' and civic responsibility in order to theorize on what constitutes 'Democratic Citizen.' Next, students will develop their own civic responsibilities by direct participation in the community in order to understand how they become democratic citizens. This will require your willingness to act, on behalf of the public good, while being attentive to and considering the feelings, needs, and attitudes of others. This participatory form of learning combined with critical thinking about the weekly readings and your ability to answer the essential question will facilitate the development of your own theory on what constitutes the soul of a democratic citizen.

Community Partner: Various

Citizens of the World

University Honors 495.001: Colloquium: Citizens of the World (3 cr) and
University Honors 496.001: Senior Service Learning: Citizens of the World (3 cr)
Call Number: Contact University Honors
Meeting Days and Time: T 12:30-3:00
Meeting Location: Student Health Center, Room 16
Instructor: Rosalie Otero



Course Description: Personal identity, community identity, and national identity are rooted in place and attachment to place. Knowing about other places influences how people understand other peoples, cultures, and regions of the world. Students must become prepared for their role as citizens of a globally interdependent world. This Colloquium will enable students to take an active, questioning approach to the world around them, and to ask what, where, when, and why questions about people, places, and environments. We will approach the topic primarily through foreign policy issues. Students will be encouraged to explore multiple policy options, ethical questions, the personal aspects of political events and the connections linking American society with the larger world.

UHON 496 represents the service learning component of UHON 495-001, Colloquium Senior Option. You must be concurrently enrolled in the colloquium in order to register for this class. Service Learning represents the UHP's commitment to education for civic responsibility. It gives students the opportunity to integrate academics with service in an experiential way and to reflect on that experience. Prior to the beginning of the semester, the student should choose an organization/agency with which he or she wishes to work. A list of agencies is available in the Honors office.

Community Partner: Various, according to student choice.

Continuing RSLP Courses

RSLP courses in American Studies, Anthropology, Communication & Journalism, Community & Regional Planning, Sociology, and Theatre will build on their Fall semester experiences and continue their work into the Spring.

American Studies 184: Introduction to Popular Culture (3 cr)

Instructor: Andrew Marcum

Course Description: This course will continue the work in popular culture initiated during Fall semester in the Santa Barbara-Martineztown Community.

Anthropology 340 - Community-Based Anthropological Research (3 cr)

Instructor: Sean Bruna

Course Description: This course will continue the anthropological research begun in Fall semester in the Barelvas Community.

Communication & Journalism 314: Intercultural Communication (3 cr)

Instructor: Bhavana Upadhyaya

Course Description: This course will continue the work begun in Fall semester in the La Mesa Community, identifying the structures of the many ethnic groups of the and addressing their expressed educational needs.

Community & Regional Planning 265: Community Planning: Concepts and Methods (3 cr)

Instructor: Mayra Madriz

Course Description: This course will continue the work in community planning initiated during Fall semester in the Santa Barbara-Martineztown Community. Students will help SB-MT complete their sector plan and plan their future community development.

Sociology 488: Field Observation and Experience (3 cr)

Instructor: Rebel Palm-Aitchison

Course Description: This course will implement the studies proposed in the Fall Sociology 280 course through the data collection, data interpretation, and presentation of findings phases. The results of these studies will provide the basis for further work with the community during Summer 2007 and subsequent semesters.

Theatre 295 - Community-Based Theatre (3 cr)

Instructor: Anna Saggese

Course Description: This course will build on the theatre base begun in Fall semester by incorporating the personal narratives collected in Anthropology. The partnership with Barelvas Community will continue.

African American Studies 397 - Building Community-Based Survival Programs (3 cr)

Instructor: David Hilliard

Course Description: This course will build on the research completed by the Fall AFAM 397 courses. Some students will begin to implement a city-wide network of community gardens and others will work with the Ralph J. Bunch Academy.

Communication & Journalism 130 - Public Speaking (3 cr)

Instructor: Bhavana Upadhyaya

Course Description: This course will involve students in asset mapping in the La Mesa Community.

Communication & Journalism 325 - Small Group Communication (3 cr)

Instructor: Lissa Knudsen

Course Description: Students will learn and apply skills in small group communication in the context of diverse communities in Albuquerque's neighborhoods.

Education 220 – Exploring Schools and Teaching (3 cr)

Instructor: Marilyn Davis

Course Description: Students will work with and provide support for the Ralph J. Bunch Academy Charter School.

Education 220 – Exploring Schools and Teaching (3 cr)

Instructor: Moneka Stevens

Course Description: Students will support the community school program in the Sawmill neighborhood.

English 102: Composition II: Analysis and Argument (3 cr) – 4 sections

Instructors: Erin Lebacqz and others

Course Description: Six special sections of English 102 will be designed around partnerships with Albuquerque-area communities and agencies. Some students will work in collaboration with UNM Service Corps in several after school programs; some will aid neighborhoods in asset mapping and other projects.

University Honors 221: Women, Family, & the Economy (3 cr)

Instructor: Sheri Metzger Karmioli

Course Description: This class will explore the ways in which women can be marginalized and kept in poverty. Students will research available community support systems to determine what is needed for women who struggle to read, find employment, learn English, feed their children, find medical care, or any of the many other problems that marginalize women's lives. Once information is gathered, students will work in small groups to create a formal proposal that offers a fresh perspective and that addresses different ways in which some of these community problems might be alleviated.

University Honors 401: The Holocaust and Intolerance (3 cr + 1 cr lab)

Instructor: Sheri Metzger Karmioli

Course Description: In this course on the Holocaust, students will volunteer time and services at the New Mexico Holocaust and Intolerance Museum in Albuquerque, and they will also become a part of the Holocaust survivor community in New Mexico through interviews and community service. Students may also be asked to assist with educational experiences at the elementary and secondary school level.

Research Service Learning Program FUNDING PARTNERS

The Research Service Learning Program is designed to improve undergraduate education at UNM and to embody UNM's commitment to the State of New Mexico and its people. This pilot project is funded entirely by private donations.

We are delighted to have the following funding partners for the academic year 2006-07:

- UNM President's Club
- McCune Charitable Foundation
- PNM Foundation
- Albuquerque Community Foundation
- Citi-Card

If you or your organization would like to support the Research Service Learning Program please contact University College Development Director Charlene Porsild at (505)277-5415 or cporsild@unm.edu. Your donation is tax deductible.

Research Service Learning Program UNIVERSITY AND COMMUNITY PARTNERS

379

University of New Mexico Partners

College of Fine Arts Departments

Theatre & Dance • Media Arts • Art History

School of Architecture & Planning Department

Community and Regional Planning

College of Arts & Science Departments

African American Studies • American Studies • Anthropology
Communication & Journalism • English • Sociology • Sustainability Studies Program

College of Education

Education • Office of Community Learning & Public Service

University College

Bachelor of University Studies Program • University Honors Program

Division of Student Affairs

African American Student Services • El Centro de la Raza

Planning and Working Partners

Neighborhood Associations

Barelas • Downtown • Highland • La Mesa • Los Duranes • Pat Hurley
Santa Barbara-Martineztown • Silver Hill • South Broadway • Sycamore

Non-Profit Organizations

The Endorphin Power Company • Project Share, Inc.
New Mexico Holocaust and Intolerance Museum and Study Center
Saint Joseph Catholic Health Center

Albuquerque Public Schools

Ralph J. Bunch Academy • After School Program

The City of Albuquerque

Barelas Community Center • Mesa Verde Community Center



The University of New Mexico

UNM Research Service Learning Program

www.unm.edu/~rslp

rslp@unm.edu

505.277.3355