

VASCULAR

## **Bovine milk-derived lactoferrin exerts proangiogenic effects in an Src-Akt-eNOS-dependent manner in response to ischemia**

Yasumasa Ikeda, MD, PhD<sup>1</sup>, Soichiro Tajima, PhD<sup>1</sup>, Yuki Izawa-Ishizawa, MD, PhD<sup>1</sup>, Yoshitaka Kihira, PhD<sup>1</sup>, Keisuke Ishizawa, PhD<sup>2</sup>, Sumiko Yoshida, MD, PhD<sup>3</sup>, Ken-ichi Aihara, MD, PhD<sup>3</sup>, Koichiro Tsuchiya, PhD<sup>2</sup>, Toshiaki Tamaki, MD, PhD<sup>1</sup>

<sup>1</sup>Department of Pharmacology, University of Tokushima Graduate School of Health Biosciences

<sup>2</sup>Department of Medical Pharmacology, University of Tokushima Graduate School of Health Biosciences

<sup>3</sup> Department of Medicine and Bioregulatory Sciences, University of Tokushima Graduate School of Health Biosciences

Correspondence to: Yasumasa Ikeda MD, PhD

Department of Pharmacology, University of Tokushima Graduate School of Health Biosciences, 3-18-15 Kuramoto-cho, Tokushima 770-8503, Japan

E-mail: yasuike@tokushima-u.ac.jp

Phone: +81-88-633-7061; Fax: +81-88-633-7062

Short running title: Bovine lactoferrin action on angiogenesis

Disclosure Summary: The authors have nothing to disclose.

The sources of support for this study: Grants for the Regional Innovation Cluster Program to T. Tamaki and a Grant-in-Aid for Scientific Research (C) and a Grant-in-Aid for Young Scientists (B) to Y. Ikeda.

## **Abstract**

Lactoferrin (LF) exerts a variety of biological effects, including the promotion of angiogenesis by increasing the expression of angiogenesis-related genes and reducing blood pressure via a nitric oxide-dependent mechanism. In the present study, we investigated the effects of LF on angiogenesis using C57BL/6J mice that received daily unilateral treatment with or without bovine milk-derived LF (bLF) following unilateral hindlimb surgery. The analysis of laser speckle blood flow showed that bLF treatment promoted blood flow recovery in response to ischemic hindlimb. The capillary density of ischemic adductor muscles, as well as the phosphorylation of Src, Akt, and endothelial nitric oxide synthase (eNOS) was also significantly higher in bLF-treated mice than in vehicle-treated mice. Furthermore, bLF increased the phosphorylation levels of Src, Akt, and eNOS in *in vitro* experiments using human aortic endothelial cells (HAECs). The action of bLF on eNOS phosphorylation was abolished by both LY294002, a phosphatidylinositol 3-kinase inhibitor, and PP2, a Src inhibitor. Similarly, bLF-induced acceleration of tube formation, cell proliferation, and cell migration in HAECs were inhibited by LY294002 or PP2. Thus, bLF promotes vascular endothelial cell function via an Src-Akt-eNOS dependent pathway, thereby contributing to revascularization in response to ischemia.

**Keywords:** lactoferrin, angiogenesis, eNOS

## **Introduction**

Lactoferrin (LF) is an 80-kD transferrin family, non-heme, iron-binding single-chain glycoprotein present in the secretory granules of neutrophils. LF is produced by mucosal epithelial cells and can be found in several biological exocrine fluids, including milk, and to a lesser extent, in bile, saliva, and tears (1). LF has various biological actions, including antibacterial and antiviral effects; antitumor activity; and functions involved in the regulation of the immune response, inflammation, and cellular growth, as well as in iron homeostasis (2). In addition, LF has been demonstrated to exert both angiogenic (3, 4) and antiangiogenic effects (5-7), making its involvement in angiogenesis controversial.

Angiogenesis plays a crucial role in the response to cardiovascular stress, including myocardial infarction (8), cardiac ischemia/reperfusion injury (9), cardiac hypertrophy (10), and peripheral circulating insufficiency (11). The enhancement of angiogenesis is an important therapeutic strategy for patients with the above diseases, and many studies investigating angiogenic mechanisms have identified factors or drugs that can be used to treat ischemic organs. Of these, endothelial nitric oxide synthase (eNOS) has been shown to be a main target for angiogenesis in response to ischemic stress in both *in vivo* (11-13) and *in vitro* conditions (14).

LF directly exerts its action on endothelial cells (ECs) by binding to specific sites on ECs through classical LF receptors such as a low-density lipoprotein-receptor related protein (15). In rats, bovine LF (bLF) is capable of inducing hypotension in a nitric oxide (NO)-dependent manner through the regulation of aortic relaxation (16). While this suggests that LF contributes to EC functions directly, the mechanism by which LF exerts effects on ECs has not yet been fully elucidated.

In the present study, we investigated the mechanisms of bLF action on ECs both *in vitro* and *in vivo*, and we showed that bLF promotes vascular endothelial function and angiogenesis in response to ischemia through a Src-Akt-eNOS-dependent mechanism.

## **Methods**

### *Materials*

Bovine lactoferrin (bLF) was purchased from Calbiochem (San Diego, CA, USA). The following commercially available antibodies were used in this study: anti-phospho-Akt (Ser473), anti-total Akt, anti-phospho-eNOS (Ser1177), anti-phospho-Src (Tyr416) from Cell Signaling Technology (Beverly, MA, USA); anti-total eNOS and anti-Src from Santa Cruz Biotechnology (Santa Cruz, CA USA); anti- $\alpha$ -tubulin, as a loading control, from Calbiochem (San Diego, CA, USA); and anti-CD31 (PECAM-1) from Becton, Dickinson and Company (BD; Tokyo, Japan). LY294002, a phosphatidylinositol 3-kinase (PI3-kinase) inhibitor, and 4-amino-5-(4-chlorophenyl)-7-(dimethylethyl)pyrazolo[3,4-*d*]pyrimidine (PP2), an Src inhibitor, were purchased from Wako Pure Chemical Industries, Ltd. (Osaka, Japan). Matrigel was obtained from BD Biosciences Japan (Tokyo, Japan). The CellTiter 96 AQueous nonradioactive cell proliferation assay kit ([3-(4,5-dimethylthiazol-2-yl)-5-(3-carboxymethoxyphenyl)-2-(4-sulfophenyl)-2H-tetrazolium] (MTS) reagent) was purchased from Promega KK (Tokyo, Japan).

### *Culture of vascular endothelial cells*

Human aortic endothelial cells (HAECs) were purchased from Takara Bio Inc. (Otsu, Japan) and cultured in EGM-2 (Lonza, Tokyo, Japan), according to the

manufacturer's protocol. HAECs were passage from 5–8 times prior to use in each experiment. Cells were treated with bLF dissolved in sterilized water. In some experiments, cells were pretreated with LY294002 (2  $\mu$ M), PP2 (1  $\mu$ M), or vehicle alone for 30 min before bLF stimulation was initiated.

#### *Tube formation assay*

Tube formation assays were performed on growth factor-reduced Matrigel (BD Biosciences, San Jose, CA, USA), as described previously (17). In brief,  $1 \times 10^4$  HAECs were cultured per well of Matrigel-coated plates in the presence of each concentration of bLF or vehicle, with or without LY294002 (2  $\mu$ M) or PP2 (1  $\mu$ M). Cells were then incubated at 37°C for 18 h. The formation of tube-like structures in the center field was observed using an inverted contrast microscope and captured with a CCD camera. Tube length was measured using the Image J 1.42 software.

#### *Cell migration assay*

Cell migration was evaluated using a modified Boyden chamber assay as described:  $2.0 \times 10^4$  cells were added to the transwell insert (pore size, 3.0  $\mu$ m; BD Biosciences) and cultured for 6 h before cells that had migrated to the lower surface were fixed and stained with Giemsa stain solution. Five random microscopic fields per well were quantified.

#### *Cell proliferation assay*

Cells were seeded in 96-well plates at  $1 \times 10^4$  cells/well for 24 h; subsequently, bLf was added for 8 h and then proliferation was assessed 1 h after the addition of MTS reagent by measuring absorbance at 490 nm with a plate reader.

#### *Assay for cell death induction by serum starvation*

HAECs were cultured in 96-well plates at  $1 \times 10^4$  cells/well. Cells were incubated in EGM-2 as control or in serum- and growth factor-free EBM-2 with bLf or vehicle for 48 h. Serum deprivation-induced cell death was evaluated by an MTS-based assay.

#### *Murine model of ischemic hindlimbs*

All experimental procedures were performed in accordance with the guidelines of the Animal Research Committee, University of Tokushima Graduate School. Eight-week-old C57/BL6J mice were purchased from Nippon CLEA (Tokyo, Japan) and divided into 2 groups: a bLf ( $50 \text{ mg}\cdot\text{kg}^{-1}\cdot\text{d}^{-1}$ )-treated group and a vehicle-treated group. Mice were injected intraperitoneally with either bLf or vehicle 3 d before the surgery to induce ischemia in the hindlimbs; the procedure used has been previously described (17). In brief, mice were anesthetized through intraperitoneal injection of pentobarbital ( $20 \text{ mg}\cdot\text{kg}^{-1}$ ) and subjected to unilateral hindlimb surgery. After ligation of the proximal and distal ends of the left femoral artery and vein, the entire artery and vein, with side branches, were resected.

#### *Evaluation of peripheral blood flow*

Hindlimb blood flow was measured before surgery and on postoperative days 0, 3, 7, 14, and 28 using a laser speckle blood flow (LSBF) analyzing system (Omega Zone,

Omega Wave Co., Tokyo, Japan), as described previously (17).

#### *Capillary density in adductor muscles*

Analysis of capillary density in adductor muscle was performed by CD31 immunohistochemistry (17). In brief, 28 d after surgery, adductor muscles were snap frozen in liquid nitrogen-cold isopentane containing OCT compound (Tissue-Tek, Sakura Finetek, Tokyo, Japan) and cryosectioned at 8  $\mu\text{m}$  for immunohistochemistry and histological analyses. Capillary density was expressed as the number of CD31-positive cells corrected for the number of muscle fibers.

#### *Protein extraction and western blot analysis*

The methods used to extract protein from ECs and adductor muscles, as well as the western blotting protocol, have been previously described in detail (17). Immunoreactive bands were visualized using a chemiluminescence reagent (Forte Luminata Western HRP Substrates, Merck-Millipore, Billerica, MA), and membranes were exposed to Hyperfilm-ECL (GE Healthcare, Piscataway, NJ). Image J 1.42 software was used for semiquantitative analysis of densitometry.

#### *Blood pressure measurement*

Blood pressure was measured by the tail-cuff method, as previously described (17).

#### *Statistical analysis*

Data have been expressed as mean  $\pm$  standard error of mean (SEM) values. An unpaired 2-tailed Student's *t*-test was used to evaluate the differences between 2

groups. For comparisons among more than 2 groups, statistical significance was assessed using a one-way analysis of variance (ANOVA), and the significance of each difference was determined by post hoc testing using Tukey-Kramer's method. *P* values of <0.05 were considered to indicate statistical significance.

## **Results**

### *Effects of bLF on eNOS activation and cell function in HAECs*

It is widely recognized that eNOS activation is important for angiogenesis in ECs (11). First, we analyzed bLF action on eNOS phosphorylation in HAECs and found that bLF increased the phosphorylated levels of eNOS in a dose-dependent manner from 0.1 to 1.0  $\mu\text{g/mL}$  (Figure 1A). Our MTS-based assay demonstrated that treatment with 1.0  $\mu\text{g/mL}$  bLF significantly promoted cell proliferation (Figure 1B). To assess the effect of bLF on cell death, HAECs were treated with bLF or vehicle and incubated for 48 h in serum-free medium. We observed that bLF also reduced serum deprivation-induced cell death, as assessed by an MTS-based assay (Figure 1C). Moreover, quantitative analysis of tube-like formation in HAECs showed that bLF significantly stimulated tube formation relative to control cells treated with vehicle alone (Figure 1D). Interestingly, we found that higher concentrations of bLF (10 and 100  $\mu\text{g/mL}$ ) did not exert these proliferative effects, did not protect against serum starved-cell death, and did not promote tube formation in HAECs (Figure 1E-G).

### *bLF increases eNOS phosphorylation through the Src-Akt pathway*



We found that eNOS activation and Src and Akt phosphorylation increased 1 h after bLF treatment (Figure 2). Because the PI3-kinase-Akt pathway is an important regulator of eNOS activation (18, 19) and Src is an upstream factor in PI3-kinase-Akt-eNOS signaling (20), we tested whether the Src-PI3-kinase-Akt pathway was involved in bLF-stimulated eNOS phosphorylation by using LY294002, a PI3-kinase inhibitor, and PP2, an Src kinase inhibitor. Pretreatment with either LY294002 or PP2 was found to markedly suppress bLF-stimulated eNOS activation (Figure 3A and E). Akt phosphorylation in response to bLF treatment was also diminished by PP2 (Figure 3E). Taken together, these findings suggest that bLF activates eNOS phosphorylation via an Src-PI3-kinase-Akt dependent mechanism.

#### *Effects of bLF on tube formation, proliferation, and migration in HAECs*

The effects of bLF on EC activation were assessed using assays for tube formation, cell proliferation, and migration. Quantitative analysis of tube length demonstrated that bLF increased tube formation in a concentration-dependent manner (Figure 1D), while MTS and Boyden chamber assays showed that bLF also promoted HAEC proliferation and migration (Figures 1B and C). We assessed the involvement of PI3-kinase, Akt, and Src in the pathway through which bLF activates cell tube formation, proliferation, and migration and found that bLF-activated EC functions were abolished by pretreatment with LY294002 or PP2 (Figure 3 A-D, Figure 3 E-H, respectively). Our results indicate that bLF promotes EC function through an Src-PI3-kinase-Akt mediated pathway.

### *bLF treatment ameliorated angiogenesis in response to ischemia in vivo*

To assess the effects of bLF on angiogenesis *in vivo*, we used a mouse model of unilateral hindlimb ischemia induced via surgery. As shown in Table 1, there were no differences in body weight, systolic blood pressure, or pulse beat 1 week after the operation between mice with or without bLF treatment; however, consecutive LSBF analyses showed that the blood flow recovery after hindlimb ischemia was better in mice treated with bLF than in mice treated with the vehicle. The rate of LSBF in bLF-treated mice was also higher after 3 d and significantly increased at 7 d or later after ischemic hindlimb surgery, compared to that in control mice (Figure 4A).

### *Capillary density in the ischemic adductor muscle of bLF-treated mice*

CD31-positive cells were measured in histological sections of ischemic adductor muscles to evaluate the angiogenic response following induction of hindlimb ischemia. Capillary density was found to be higher in bLF-treated mice than in vehicle-treated mice on day 28 after surgery (Figure 4B).

### *Action of bLF on eNOS, Akt, and Src phosphorylation in ischemic skeletal muscles*

To identify the pathway through which bLF exerts its effects on angiogenesis, we assessed the phosphorylation levels of eNOS, Akt, and Src in ischemic skeletal muscle tissue. We found that eNOS phosphorylation, as well as Akt and Src phosphorylation, were significantly higher in the ischemic muscle tissues of mice treated with bLF than in mice treated with the vehicle on postoperative day 7 (Figure

4C). These results indicate that the effect of bLF on angiogenesis is exerted through Src-Akt-eNOS signaling, which is consistent with the findings for bLF action *in vitro*.

## **Discussion**

In the present study, bLF was found to activate eNOS phosphorylation, tube formation, proliferation, and migration in ECs through an Src-Akt-dependent mechanism, leading to the promotion of angiogenesis. In an *in vivo* mouse model of hindlimb ischemia, bLF also augmented the phosphorylation of Src-Akt-eNOS and increased capillary number in ischemic adductor muscles, thereby contributing to the enhancement of blood flow recovery in response to ischemia.

LF is present in exocrine secretions from ECs such as milk and tears (1) and has a variety of biological functions, including antibacterial, antiviral, and anticarcinogenic activities, as well as functions in the regulation of the immune response, inflammation, cellular growth and differentiation, and iron homeostasis (2). LF has also been implicated in various pathophysiological conditions. For instance, LF increases bone formation (21), and the oral administration of LF has been shown to ameliorate bone density in ovariectomized mice (22). The action that LF exerts on bone occurs through stimulation of the proliferation and differentiation of osteoblasts, as well as inhibition of the differentiation of osteoclasts, and can contribute to the treatment of osteoporosis. In studies on cancer, LF has been found to inhibit tumor growth and metastasis through iron chelation (23, 24) and cause growth arrest through the inhibition of G1 cyclin dependent-kinase (25). Recently, several studies have shown that LF is also involved in the promotion of angiogenesis. In 1 study, human LF was found to promote vascular endothelial growth factor (VEGF)-mediated angiogenesis in ECs through the upregulation of KDR/Flt-1 expression (4). Similarly,

VEGF-mediated angiogenesis in ECs was enhanced by human apo-LF, but not human holo-LF (3). Finally, bLF has been shown to stimulate the expression of the angiogenic factors VEGF and fibroblast growth factor 2 via the extracellular regulated kinase 1/2 pathway in osteoblast cells (26), as well as to exert effects on hypotension and vascular relaxation through an NO-mediated pathway (16). Under ischemic conditions, increased LF concentration has been shown to be a predictor for the risk of fetal ischemic heart disease in the case of diabetes (27), suggesting compensatory elevation of LF against ischemia. Additionally, oral LF administration reduces intestinal ischemia-reperfusion injury through antioxidative, anti-inflammatory, and antiapoptotic actions in rats (28). Thus, LF has the potential to promote angiogenesis and is effective for revascularization in response to ischemia.

In the present study, we also found that bLF enhanced ischemia-induced angiogenesis *in vivo*, in addition to increasing EC function *in vitro* through an eNOS-dependent pathway. This bLF-induced eNOS activation was prevented by inhibitors of both PI3-kinase and Src, suggesting that bLF acts on eNOS in an Src-PI3-kinase-Akt-dependent manner. Indeed, eNOS is well known to be an important factor of angiogenesis activated by Akt-dependent signaling (18, 19). Similarly, bLF induced eNOS phosphorylation and EC functions in this study. These effects were suppressed by LY294002, a PI3-kinase inhibitor, indicating that LF activates EC function in an Akt-dependent manner. We also found that bLF increased Src phosphorylation and that the Src kinase inhibitor PP2 suppressed bLF-induced eNOS phosphorylation and EC activation. Src kinase has also been shown to be an upstream regulator of PI3-kinase-Akt-mediated eNOS activation by estrogen (20), a selective angiotensin II type 1 receptor (29), and grape juice (30). Taken together, our results demonstrate that bLF-induced eNOS activation is mediated through Src-PI3-kinase-Akt signaling.

In contrast to this study and other previous studies, several reports have shown LF to have an inhibitory effect on angiogenesis. For instance, the antitumor activity of bLF has been reported to be mediated by the inhibition of angiogenesis (6), and the oral administration of bLF has been found to inhibit VEGF-mediated angiogenesis in rats and ECs (5). Furthermore, bLF has been shown to suppress angiogenic activation in bovine aortic ECs (7). Thus, the effects of LF on angiogenesis remain controversial, although the results of the present study indicate that bLF activates endothelial function and promotes an ischemia induced-angiogenic response. While it is difficult to explain why our results are in opposition to those of previous studies, one plausible reason is that the doses of bLF used were different, ranging from 0.01 to 1  $\mu\text{g}/\text{mL}$  in our study versus 10 to greater than 100  $\mu\text{g}/\text{mL}$  in others. In support of this hypothesis, we found that a dose of 10  $\mu\text{g}/\text{mL}$  bLF had no effect on cell proliferation or tube formation in HAECs. Further investigations are necessary to address different effects of bLF on angiogenesis.

## **Conclusion**

In this study, we have shown that bLF promotes revascularization in response to ischemic stress through an Src-Akt-eNOS-dependent pathway. Our observations indicate that bLF may have potential as a candidate agent that could be used to induce angiogenesis.

## **References**

1. Lonnerdal B, Iyer S. Lactoferrin: molecular structure and biological function. *Annu Rev Nutr.* 1995;15:93-110.
2. Brock JH. The physiology of lactoferrin. *Biochem Cell Biol.* 2002;80(1):1-6.
3. Norrby K. Human apo-lactoferrin enhances angiogenesis mediated by vascular endothelial growth factor A in vivo. *J Vasc Res.* 2004 Jul-Aug;41(4):293-304.
4. Kim CW, Son KN, Choi SY, Kim J. Human lactoferrin upregulates

expression of KDR/Flk-1 and stimulates VEGF-A-mediated endothelial cell proliferation and migration. *FEBS Lett.* 2006 Aug 7;580(18):4332-6.

5. Norrby K, Mattsby-Baltzer I, Innocenti M, Tuneberg S. Orally administered bovine lactoferrin systemically inhibits VEGF(165)-mediated angiogenesis in the rat. *Int J Cancer.* 2001 Jan 15;91(2):236-40.

6. Shimamura M, Yamamoto Y, Ashino H, Oikawa T, Hazato T, Tsuda H, Iigo M. Bovine lactoferrin inhibits tumor-induced angiogenesis. *Int J Cancer.* 2004 Aug 10;111(1):111-6.

7. Yeom M, Park J, Lee B, Choi SY, Kim KS, Lee H, Hahm DH. Lactoferrin inhibits the inflammatory and angiogenic activation of bovine aortic endothelial cells. *Inflamm Res.* 2011 May;60(5):475-82.

8. Kocher AA, Schuster MD, Szabolcs MJ, Takuma S, Burkhoff D, Wang J, Homma S, Edwards NM, Itescu S. Neovascularization of ischemic myocardium by human bone-marrow-derived angioblasts prevents cardiomyocyte apoptosis, reduces remodeling and improves cardiac function. *Nat Med.* 2001 Apr;7(4):430-6.

9. Luo Z, Diaco M, Murohara T, Ferrara N, Isner JM, Symes JF. Vascular endothelial growth factor attenuates myocardial ischemia-reperfusion injury. *Ann Thorac Surg.* 1997 Oct;64(4):993-8.

10. Shiojima I, Sato K, Izumiya Y, Schiekofer S, Ito M, Liao R, Colucci WS, Walsh K. Disruption of coordinated cardiac hypertrophy and angiogenesis contributes to the transition to heart failure. *J Clin Invest.* 2005 Aug;115(8):2108-18.

11. Murohara T, Asahara T, Silver M, Bauters C, Masuda H, Kalka C, Kearney M, Chen D, Symes JF, Fishman MC, Huang PL, Isner JM. Nitric oxide synthase modulates angiogenesis in response to tissue ischemia. *J Clin Invest.* 1998 Jun 1;101(11):2567-78.

12. Kureishi Y, Luo Z, Shiojima I, Bialik A, Fulton D, Lefer DJ, Sessa WC, Walsh K. The HMG-CoA reductase inhibitor simvastatin activates the protein kinase Akt and promotes angiogenesis in normocholesterolemic animals. *Nat Med.* 2000 Sep;6(9):1004-10.

13. Chen LL, Yin H, Huang J. Inhibition of TGF-beta1 signaling by eNOS gene transfer improves ventricular remodeling after myocardial infarction through angiogenesis and reduction of apoptosis. *Cardiovasc Pathol.* 2007 Jul-Aug;16(4):221-30.

14. Murohara T, Witzenbichler B, Spyridopoulos I, Asahara T, Ding B, Sullivan A, Losordo DW, Isner JM. Role of endothelial nitric oxide synthase in endothelial cell migration. *Arterioscler Thromb Vasc Biol.* 1999 May;19(5):1156-61.

15. Fillebeen C, Descamps L, Dehouck MP, Fenart L, Benaissa M, Spik G, Cecchelli R, Pierce A. Receptor-mediated transcytosis of lactoferrin through the blood-brain barrier. *J Biol Chem.* 1999 Mar 12;274(11):7011-7.

16. Hayashida K, Takeuchi T, Ozaki T, Shimizu H, Ando K, Miyamoto A, Harada E. Bovine lactoferrin has a nitric oxide-dependent hypotensive effect in rats. *Am J Physiol Regul Integr Comp Physiol.* 2004 Feb;286(2):R359-65.

17. Ikeda Y, Tajima S, Yoshida S, Yamano N, Kihira Y, Ishizawa K, Aihara K, Tomita S, Tsuchiya K, Tamaki T. Deferoxamine promotes angiogenesis via the activation of vascular endothelial cell function. *Atherosclerosis.* 2011 Apr;215(2):339-47.

18. Dimmeler S, Fleming I, Fisslthaler B, Hermann C, Busse R, Zeiher AM. Activation of nitric oxide synthase in endothelial cells by Akt-dependent phosphorylation. *Nature.* 1999 Jun 10;399(6736):601-5.

19. Fulton D, Gratton JP, McCabe TJ, Fontana J, Fujio Y, Walsh K, Franke TF,

- Papapetropoulos A, Sessa WC. Regulation of endothelium-derived nitric oxide production by the protein kinase Akt. *Nature*. 1999 Jun 10;399(6736):597-601.
20. Haynes MP, Li L, Sinha D, Russell KS, Hisamoto K, Baron R, Collinge M, Sessa WC, Bender JR. Src kinase mediates phosphatidylinositol 3-kinase/Akt-dependent rapid endothelial nitric-oxide synthase activation by estrogen. *J Biol Chem*. 2003 Jan 24;278(4):2118-23.
21. Cornish J, Callon KE, Naot D, Palmano KP, Banovic T, Bava U, Watson M, Lin JM, Tong PC, Chen Q, Chan VA, Reid HE, Fazzalari N, Baker HM, Baker EN, Haggarty NW, Grey AB, Reid IR. Lactoferrin is a potent regulator of bone cell activity and increases bone formation in vivo. *Endocrinology*. 2004 Sep;145(9):4366-74.
22. Blais A, Malet A, Mikogami T, Martin-Rouas C, Tome D. Oral bovine lactoferrin improves bone status of ovariectomized mice. *Am J Physiol Endocrinol Metab*. 2009 Jun;296(6):E1281-8.
23. Bezault J, Bhimani R, Wiprovnick J, Furmanski P. Human lactoferrin inhibits growth of solid tumors and development of experimental metastases in mice. *Cancer Res*. 1994 May 1;54(9):2310-2.
24. Yoo YC, Watanabe S, Watanabe R, Hata K, Shimazaki K, Azuma I. Bovine lactoferrin and lactoferricin, a peptide derived from bovine lactoferrin, inhibit tumor metastasis in mice. *Jpn J Cancer Res*. 1997 Feb;88(2):184-90.
25. Damiens E, El Yazidi I, Mazurier J, Duthille I, Spik G, Boilly-Marer Y. Lactoferrin inhibits G1 cyclin-dependent kinases during growth arrest of human breast carcinoma cells. *J Cell Biochem*. 1999 Sep 1;74(3):486-98.
26. Nakajima K, Kanno Y, Nakamura M, Gao XD, Kawamura A, Itoh F, Ishisaki A. Bovine milk lactoferrin induces synthesis of the angiogenic factors VEGF and FGF2 in osteoblasts via the p44/p42 MAP kinase pathway. *Biometals*. 2011 Oct;24(5):847-56.
27. Vengen IT, Dale AC, Wiseth R, Midthjell K, Videm V. Lactoferrin is a novel predictor of fatal ischemic heart disease in diabetes mellitus type 2: Long-term follow-up of the HUNT 1 study. *Atherosclerosis*. 2010 Oct;212(2):614-20.
28. Zhang T, Wang Y, Ban R, Tong L, Qiao H, Lao H, Zhao H, Jiang X, Sun X, Zhang F. Oral Administration of Lactoferrin Attenuates Intestinal Ischemia-Reperfusion Injury in Rats. *Eur Surg Res*. 2012;49(2):99-106.
29. Su KH, Tsai JY, Kou YR, Chiang AN, Hsiao SH, Wu YL, Hou HH, Pan CC, Shyue SK, Lee TS. Valsartan regulates the interaction of angiotensin II type 1 receptor and endothelial nitric oxide synthase via Src/PI3K/Akt signalling. *Cardiovasc Res*. 2009 Jun 1;82(3):468-75.
30. Anselm E, Chataigneau M, Ndiaye M, Chataigneau T, Schini-Kerth VB. Grape juice causes endothelium-dependent relaxation via a redox-sensitive Src- and Akt-dependent activation of eNOS. *Cardiovasc Res*. 2007 Jan 15;73(2):404-13.

## Figure legends

**Figure 1.** Effects of bLF treatment in HAECs. (A) Dose-dependent effects of bLF on eNOS phosphorylation. Protein was extracted 1 h after bLF treatment. Left panel: Representative blots of phospho-eNOS, total eNOS, and tubulin. Right panel: Densitometric analysis of eNOS phosphorylation. Values are expressed in terms of

mean  $\pm$  SEM. \* $P$  < 0.05, \*\* $P$  < 0.01,  $n$  = 6 in each group. (B) bLF action on endothelial cell proliferation. Cell proliferation was increased by bLF in a dose-dependent manner. Values are expressed in terms of mean  $\pm$  SEM. \* $P$  < 0.05,  $n$  = 6 in each group. (C) Effects of bLF on cell death induced by serum starvation. Cell death was inhibited by bLF in a dose-dependent manner. Values are expressed in terms of mean  $\pm$  SEM. \* $P$  < 0.05,  $n$  = 8 in each group. (D) Effects of bLF on tube formation. Endothelial cell tube formation was induced by bLF in a concentration-dependent manner. \* $P$  < 0.05,  $n$  = 4 in each group.

(E) Dose effect of 1–100  $\mu\text{g}/\text{mL}$  bLF on endothelial cell proliferation. Cell proliferation increased on treatment with 1  $\mu\text{g}/\text{mL}$  bLF, but not at 10 or 100  $\mu\text{g}/\text{mL}$  bLF. Values have been expressed in terms of mean  $\pm$  SEM. \* $P$  < 0.05,  $n$  = 8 in each group. (F) Effect of 1–100  $\mu\text{g}/\text{mL}$  bLF on cell death induced by serum starvation. Cell death was lower compared to that for the vehicle in the case of treatment with 1  $\mu\text{g}/\text{mL}$  bLF, but not in the case of 10 or 100  $\mu\text{g}/\text{mL}$  bLF. Values are expressed in terms of mean  $\pm$  SEM. \* $P$  < 0.05,  $n$  = 8 in each group. (G) Effect of 1–100  $\mu\text{g}/\text{mL}$  bLF on tube formation. Endothelial cell tube formation was induced by treatment with 1  $\mu\text{g}/\text{mL}$  bLF, but not in the case of 10 or 100  $\mu\text{g}/\text{mL}$  bLF. \* $P$  < 0.05,  $n$  = 4–5 in each group.

**Figure 2.** Time-dependent changes in eNOS, Akt, and Src phosphorylation in HAECs following bLF administration (1  $\mu\text{g}/\text{mL}$ ). Upper panel: Representative blots of phospho-eNOS, Akt, and Src, and total eNOS, Akt, Src, and tubulin. Lower panel: Densitometric analysis of eNOS, Akt, and Src phosphorylation. The values have been expressed in terms of mean  $\pm$  SEM. \* $P$  < 0.05, \*\* $P$  < 0.01,  $n$  = 8 in each group.

**Figure 3.** Analysis of PI3-kinase-Akt or Src pathway involvement in bLF-induced



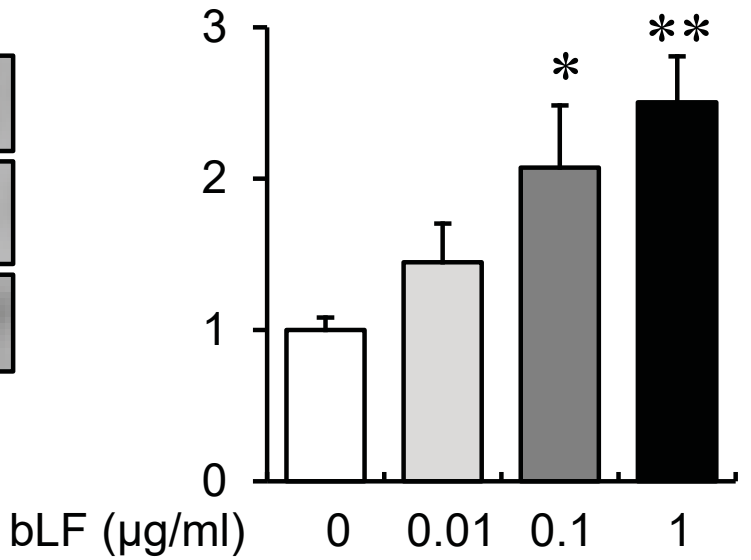
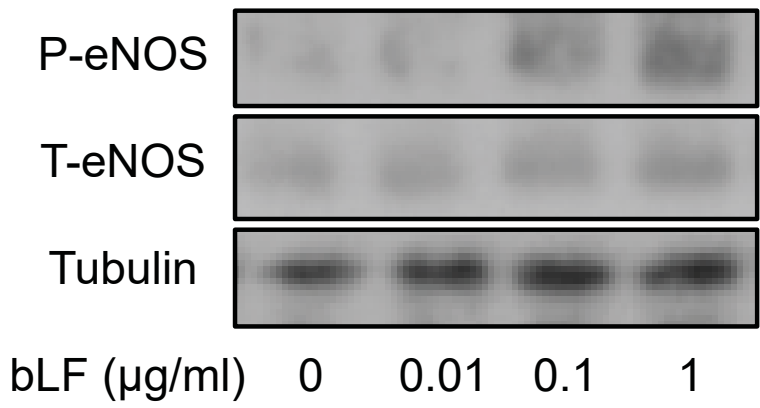
endothelial cell activation. (A) The induction of eNOS phosphorylation by bLF was abolished by LY294002. Protein was extracted 1 h after bLF treatment. Left panel: Representative blots of phospho-eNOS and Akt, and total eNOS, Akt, and tubulin. Right panel: Densitometric analysis of eNOS and Akt phosphorylation. The values have been expressed in terms of mean  $\pm$  SEM.  $*P < 0.05$ ,  $**P < 0.01$ ,  $n = 8$  in each group. The increases in (B) tube formation, (C) cell proliferation, and (D) cell migration elicited in HAECs by bLF were inhibited by LY294002. The values have been expressed in terms of mean  $\pm$  SEM.  $*P < 0.05$ ,  $**P < 0.01$ ,  $n = 6-8$  in each group. (E) bLF-induced eNOS phosphorylation was abolished by PP2. Protein was extracted 1 h after bLF treatment. Left panel: Representative blots of phospho-eNOS and Akt, and total eNOS, Akt, and tubulin. Right panel: Densitometric analysis of eNOS and Akt phosphorylation. The values have been expressed in terms of mean  $\pm$  SEM.  $*P < 0.05$ ,  $**P < 0.01$ ,  $n = 8$  in each group. The increases in (F) tube formation, (G) cell proliferation, and (H) cell migration elicited in HAECs by bLF were inhibited by PP2. The values have been expressed in terms of mean  $\pm$  SEM.  $*P < 0.05$ ,  $**P < 0.01$ ,  $n = 6-8$  in each group.

**Figure 4.** bLF treatment promoted revascularization in response to hindlimb ischemia in mice. (A) Left panel: Quantitative evaluation of ischemic to non-ischemic laser speckle blood flow (LSBF) ratio in mice treated with vehicle or bLF before surgery and on postoperative days 0, 3, 7, 14, and 28. Right panel: Representative LSBF images for hindlimb ischemia in vehicle or bLF-treated mice.  $*P < 0.05$ ,  $**P < 0.01$  vs. mice treated with vehicle,  $n = 8$  in each group. (B) Immunohistochemical analysis of capillaries in skeletal muscles. Left panel: Representative immunohistological staining of anti-CD31 in ischemic hindlimbs from mice treated with the vehicle or bLF. Right panel: Quantification of capillary density in mice treated with the vehicle

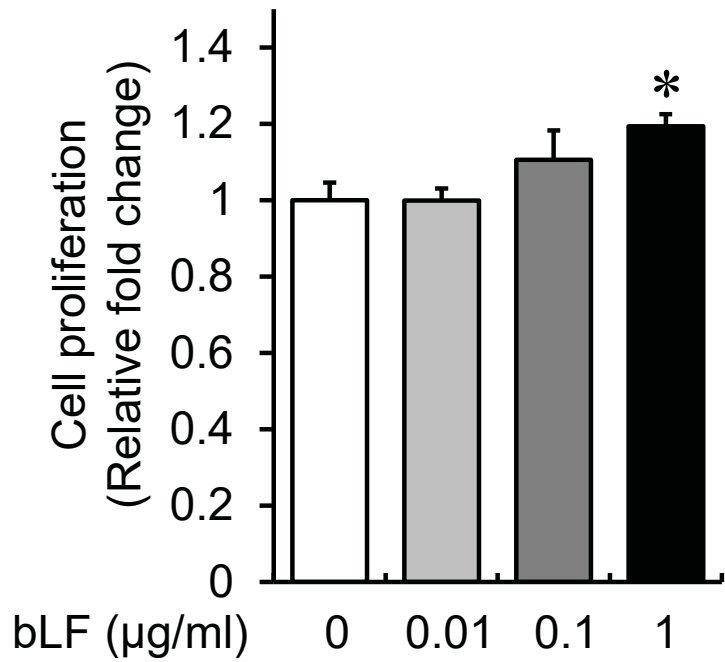
or bLF at 28 d after surgery.  $*P < 0.05$  vs. mice treated with the vehicle,  $n = 5-6$  in each group. (C) The levels of eNOS, Akt, and Src phosphorylation in the ischemic skeletal muscles of mice treated with the vehicle or bLF. Left panel: Representative blots of phospho- and total eNOS, Akt, and Src in the ischemic muscle tissue of mice treated with the vehicle or bLF at 7 d after surgery. Tubulin was used as a loading control. Right panel: Densitometric analysis of eNOS, Akt, and Src phosphorylation. The values have been expressed in terms of mean  $\pm$  SEM.  $*P < 0.05$ ,  $**P < 0.01$ ,  $n = 6$  in each group.

Figure 1

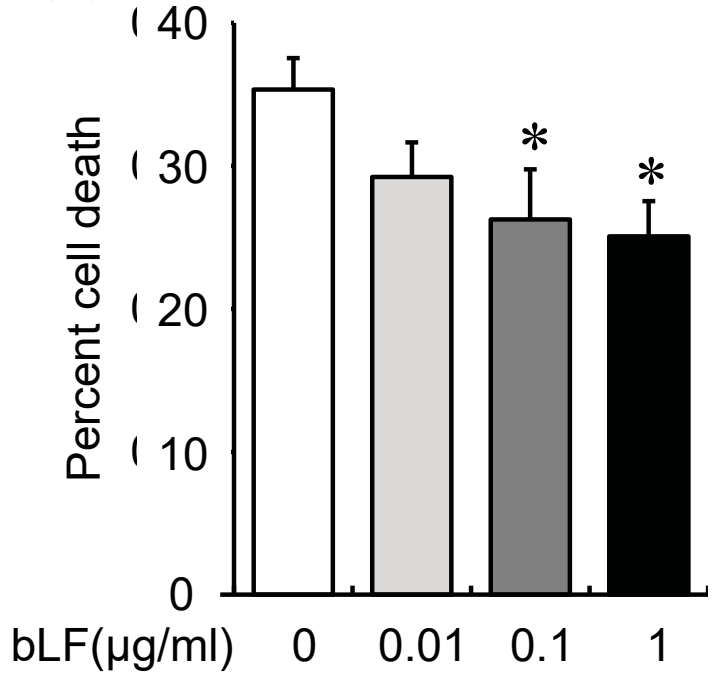
(A)



(B)



(C)



(D)

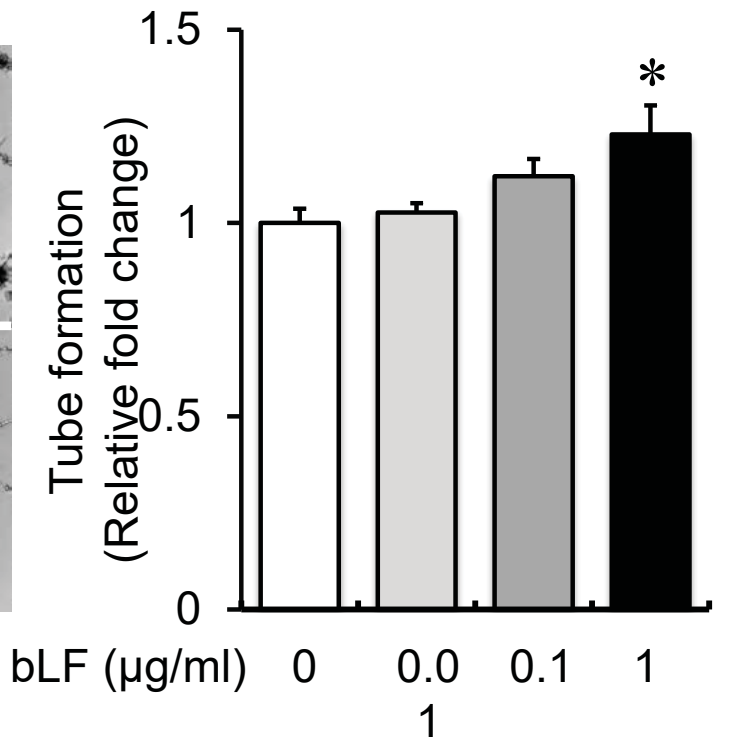
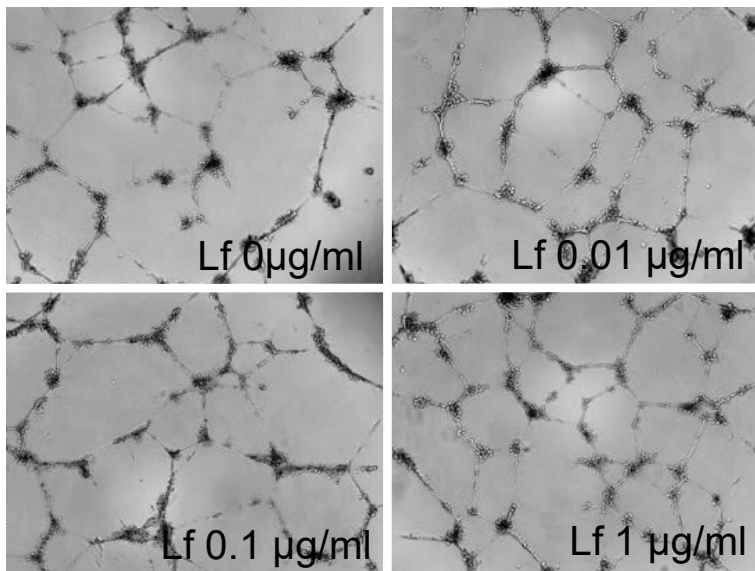
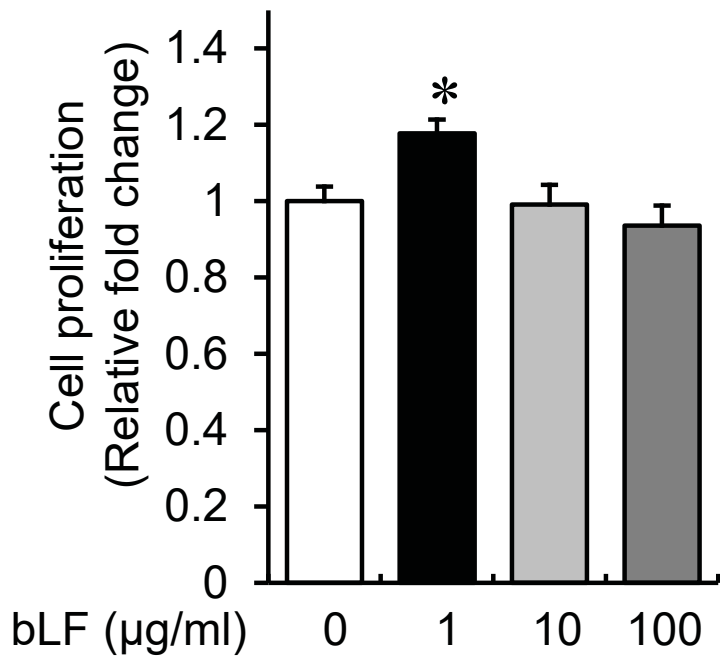
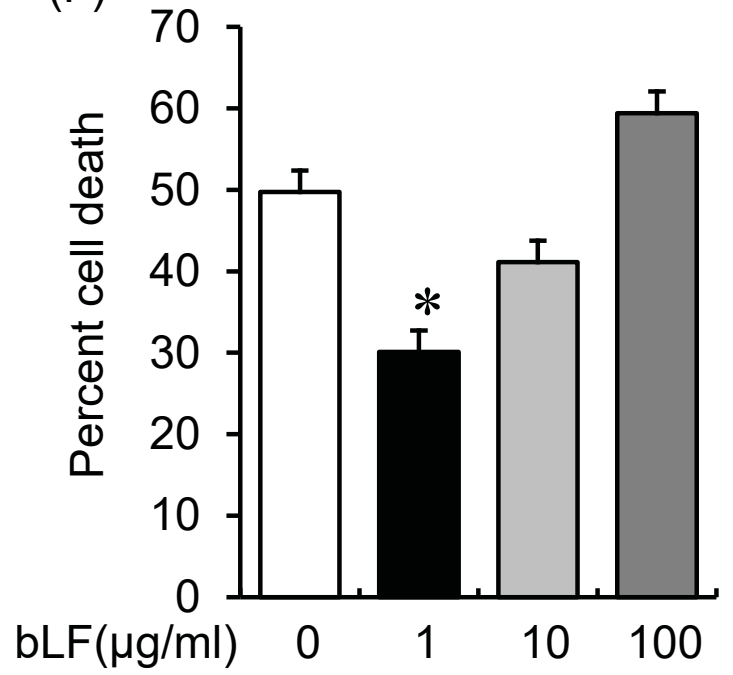


Figure 1continued

(E)



(F)



(G)

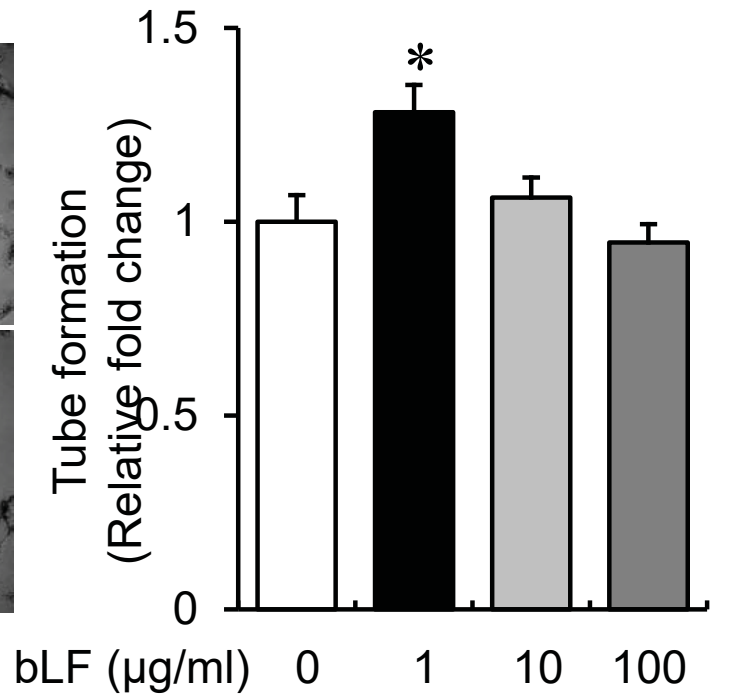
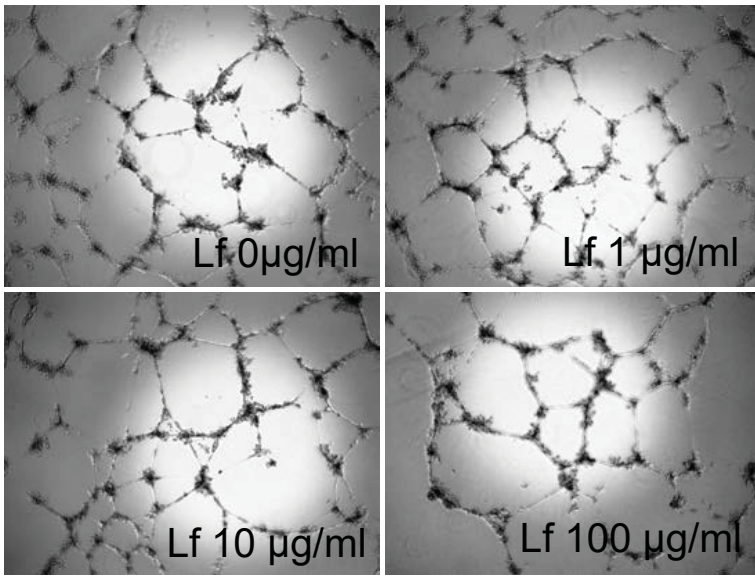


Figure 2

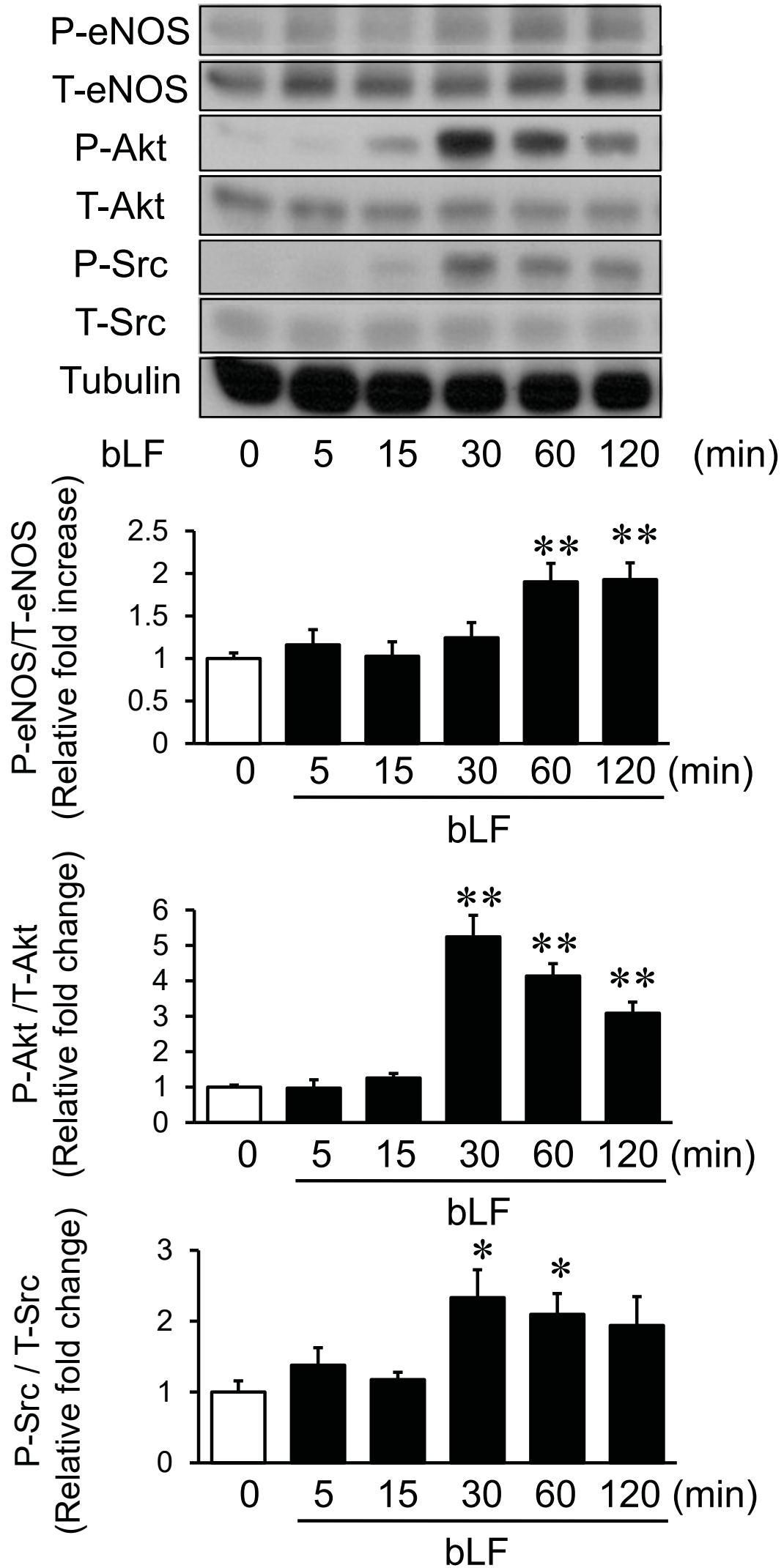
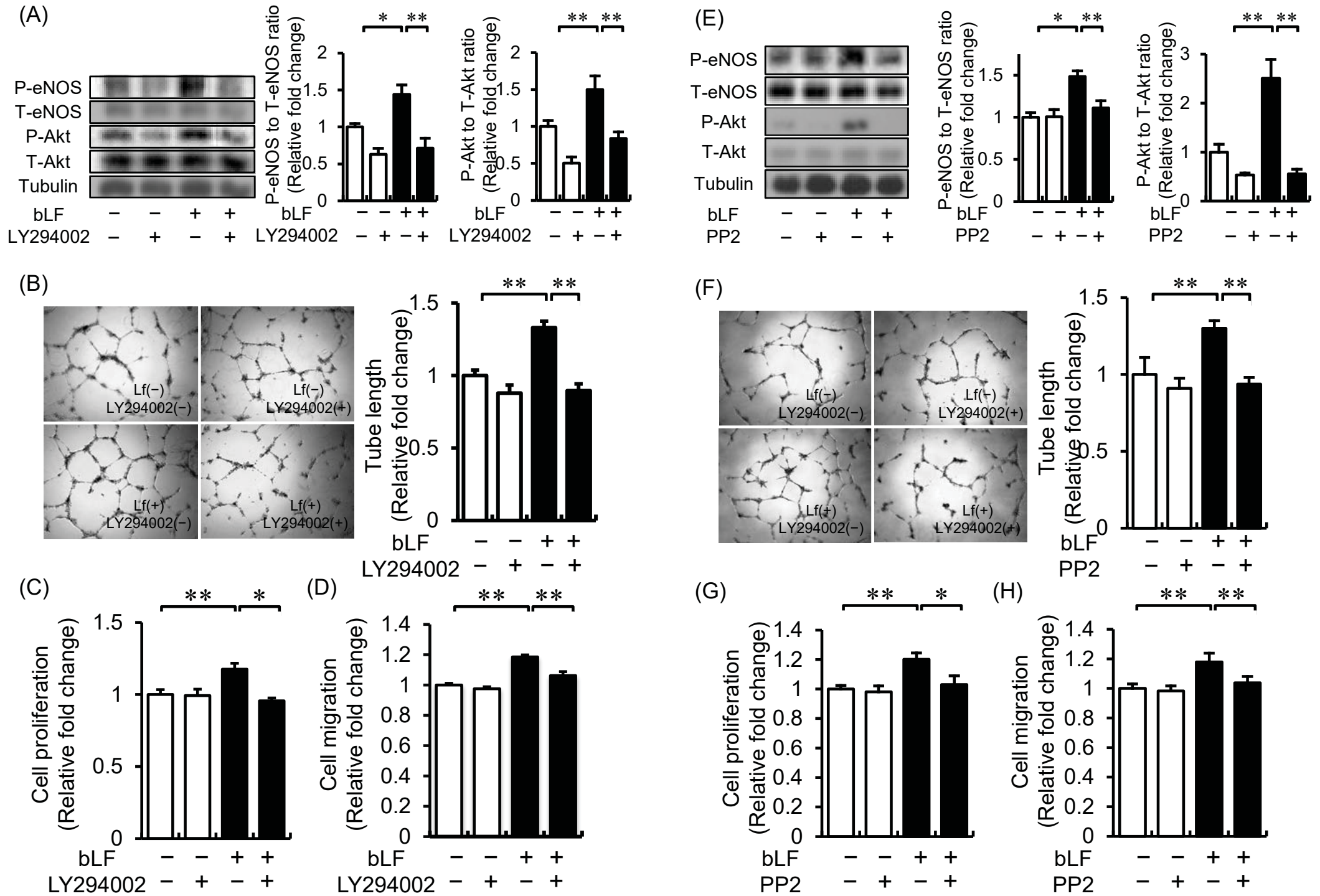
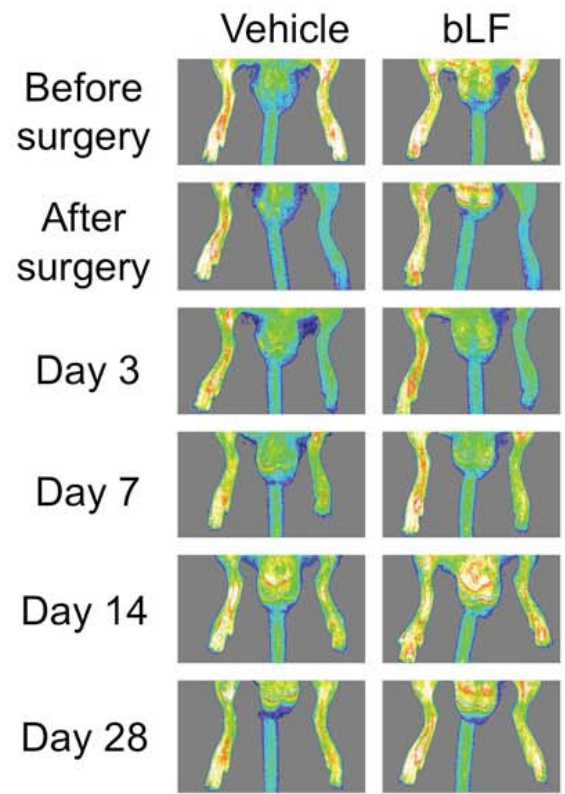
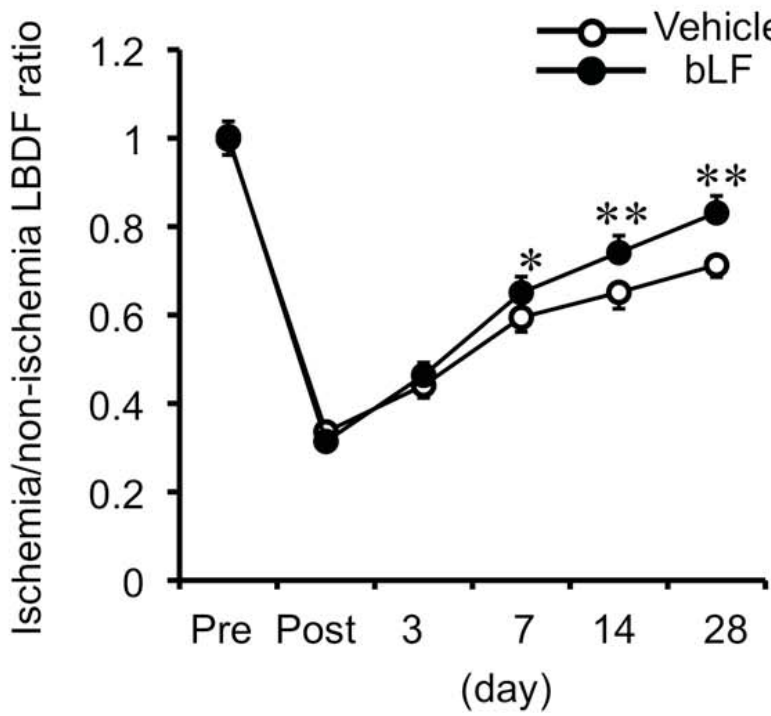


Figure 3

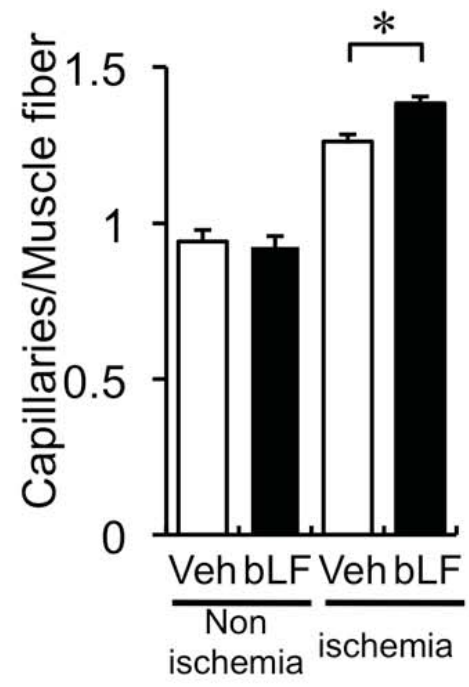
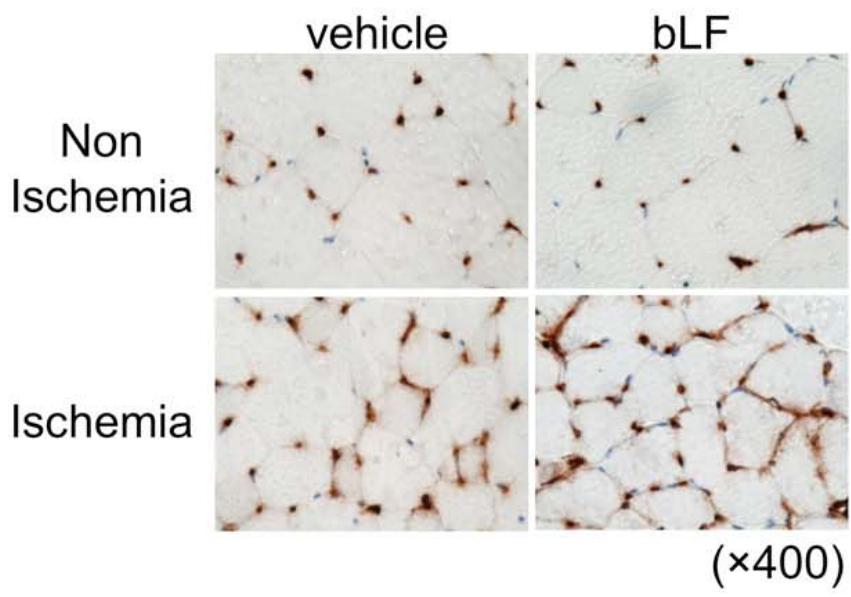


**Figure 4**

**(A)**



**(B)**



**(C)**

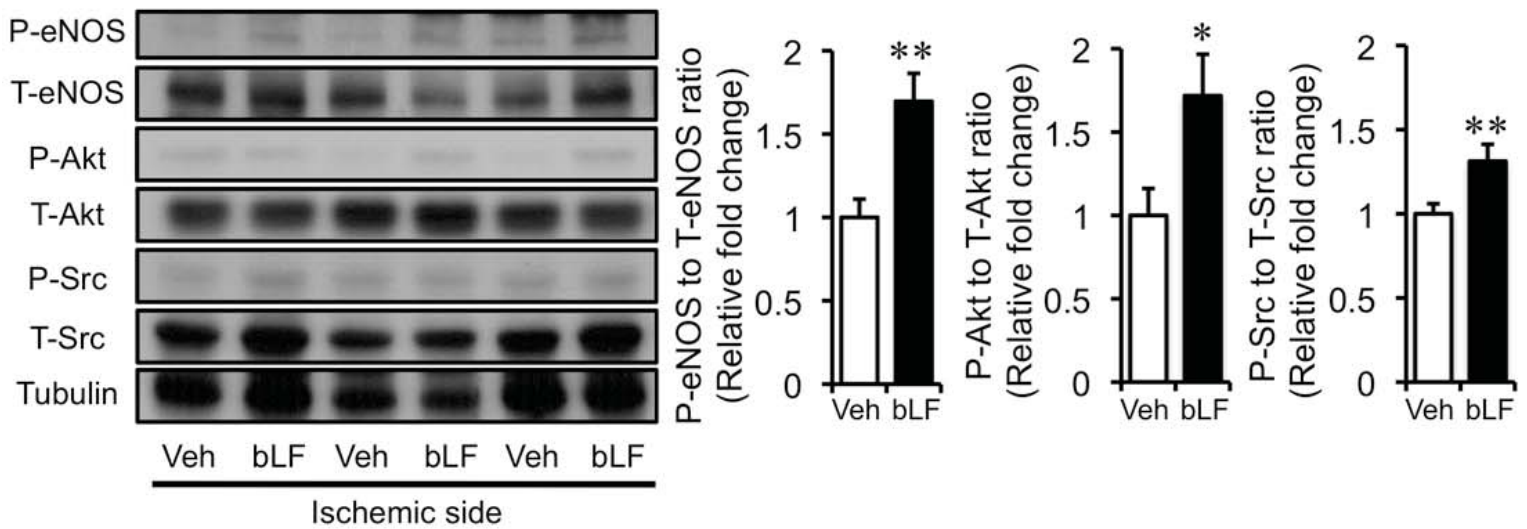


Table.1 Body weight, Blood pressure and pulse rate at day 7 after ischemic hindlimb surgery

	Post-surgery at day 7	
	vehicle	bLF
BW (g)	22.0 ± 0.3	22.1 ± 0.3
Syst. BP (mmHg)	99 ± 3	100 ± 2
Dias. BP (mmHg)	68 ± 3	73 ± 4
Pulse rate (beats/min)	663 ± 20	680 ± 8

Values are mean ± SEM. n=6, respectively.