



# Frequency Assessment of OXA-10 and PER $\beta$ -Lactamase Genes and Determination of Minimum Inhibitory Concentration in *Klebsiella* Strains Isolated from Urinary Tract Infections

Farshad Kakian <sup>1</sup>, Milad Shahini Shams Abadi <sup>1</sup>, Behnam Zamanzad <sup>2</sup>, Hasan Najafi <sup>2</sup>, Masoud Amiri <sup>3</sup> and Abolfazl Gholipour <sup>2, \*</sup>

<sup>1</sup>Department of Bacteriology and Virology, School of Medicine, Shiraz University of Medical Sciences, Shiraz, Iran

<sup>2</sup>Cellular and Molecular Research Center, Basic Health Sciences Institute, Shahrekord University of Medical Sciences, Shahrekord, Iran

<sup>3</sup>Social Health Determinants Research Center and Epidemiology and Biostatistics, School of Health, Shahrekord University of Medical Sciences, Shahrekord, Iran

\*Corresponding author: Department of Microbiology and Immunology, Cellular and Molecular Research Center, Shahrekord University of Medical Sciences, Shahrekord, Iran.  
Email: gholipour\_abolfazl@yahoo.com

Received 2017 December 24; Revised 2019 January 09; Accepted 2019 January 16.

## Abstract

**Background:** *Klebsiella* is one of the *Enterobacteriaceae* family that causes infections such as pneumonia, urinary tract infections (UTI), and meningitis. *Klebsiella* strains are capable of producing enzymes that can degrade the third-generation of cephalosporins known as broad-spectrum beta-lactamase enzymes. The resistance of *Klebsiella* strains to  $\beta$ -lactam antibiotics is related to the presence of  $\beta$ -lactamase genes.

**Methods:** In this study, 90 isolates of *Klebsiella* were isolated from two inpatient and outpatient groups, each of them was 45 isolates, which were collected from patients with urinary tract infection in educational hospitals of Shahrekord. The isolates were identified using phenotypic agar diffusion, disc phenotypic confirmation tests, and E-test of extended-spectrum beta-lactamase (ESBL). The PCR molecular method was used to diagnose and determine the strains containing broad-spectrum  $\beta$ -lactamases.

**Results:** Thirty (66%) inpatients and 8 (17.8%) outpatients had broad-spectrum  $\beta$ -lactamase enzymes. The frequency of  $\beta$ -lactamase OXA-10 genes and PER in inpatients were 90% and 33%, respectively and also in outpatients were 50% and 12.5%, respectively.

**Conclusions:** This study showed that the prevalence of isolated *Klebsiella* producing broad-spectrum  $\beta$ -lactamases is higher in inpatients in comparison to outpatients. Therefore, the rapid and accurate identification of bacteria and their resistance genes in clinical microbiology labs are highly recommended.

**Keywords:** *Klebsiella*, Minimum Inhibitory Concentration, Extended Spectrum  $\beta$ -Lactamases, OXA-10, PER Gene

## 1. Background

Urinary tract infection (UTI) is known as an infection that affects 150 million people annually and the second most common infection reported in Iran and the world. It causes seven million visits by doctors due to UTI each year (1, 2). *Klebsiella pneumoniae* and *Escherichia coli* among the *Enterobacteriaceae* family are more likely to be acquired infections and hospital infections than the rest of the family (3). *Klebsiella* is an opportunistic organism that causes hospital infection and acquired community infection, such as septicemia, pneumonia, and urinary tract infections, soft tissue infections, liver damage, abscess, and meningitis (4). The importance of this bacterium as a human pathogen is the development of hospital infections and the involvement of the patients with immunodeficiency or underlying diseases such as diabetes mellitus and chronic

pulmonary disorders (5).

The emergence of antibiotics such as cephalosporin and aztreonam and their increased consumption have led to the emergence of a new group of  $\beta$ -lactamase enzymes called broad-spectrum  $\beta$ -lactamases (ESBLs) (6). Although carbapenems are preferred choice for infections nowadays, unfortunately, many Gram-negative bacteria with multi-drug resistance (MDR) are also resistant to carbapenems (7). The  $\beta$ -lactamase genes are transmitted vertically and horizontally between bacteria. There are more than 300 sub-groups of ESBLs, which mutations in their genes led to the production of new  $\beta$ -lactamases capable of hydrolyzing third-generation cephalosporins and aztreonam (8). So far, 340  $\beta$ -lactamase enzymes have been identified and classified according to the classification of the ambler to four categories A, B, C, and D, which A, C, and D

have the active site for serine, while class B requires zinc ion for its activity, and class D includes a group that is naturally similar to class A and C enzymes, which are the same as oxacillinase (9).

OXA beta-lactamases are found mainly in *Enterobacteriaceae* and *Pseudomonas aeruginosa* and belong to the molecular D class. They are responsible for resistance to ampicillin and cefalotin and are characterized by high hydrolytic activity against oxacillin and flucloxacillin, weakly inhibited by clavulanic acid and are often resistant to ceftazidime and low resistant to carbapenems (10, 11). For the first time, PER gene in a clinical specimen of a patient in a French hospital has been reported from *P. aeruginosa*. PER beta-lactamases have high resistance to ceftazidime, cefotaxime, and monobactam; additionally, they can cause low resistance to carbapenems and cephamycin. They are well controlled by clavulanic acid and tazobactam (12). Therefore, rapid detection and identification of these resistant strains help to adopt an appropriate and concise treatment and helps to control infection and prevent the further development of them (13-15) It is, therefore, necessary to determine the pattern of antibiotic resistance of bacteria in each region. Considering the prevalence of ESBLs in *Klebsiella* in every region makes possible for the clinicians to choose effective antibiotics in order to quickly eradicate infections caused by these bacteria.

## 2. Objectives

The aim of this study was to determine beta-lactamase enzymes, minimum inhibitory concentration (MIC) for ceftazidime, cefotaxime, and ceftriaxone and determination of the frequency of beta-lactamase OXA-10 and PER genes in *Klebsiella* strains isolated from UTIs.

## 3. Methods

### 3.1. Bacterial Isolates

In this descriptive-analytical study, 90 isolates of *Klebsiella* were collected from patients with UTI in two inpatient (n = 45) and outpatient (n = 45) groups in 2016. Inpatient samples included those taken from patients who had been diagnosed with UTI 48 - 72 hours after being admitted to the hospital. Outpatient samples were also prepared from the patients who had not a hospital stay in the past month. *Klebsiella* isolates were recognized through microscopy, Gram stain, culture, and biochemical tests. Eosin methylene blue media, MacConkey agar, and Blood agar (Merck Co., Germany) were used for culture. Uropathogenic microorganisms were known via phenotypic tests of exact culture and typical phenotypic structures. Bacterial isolates were then recognized by Gram staining and a series of typical biochemical tests.

### 3.2. Antimicrobial Susceptibility Testing

An antibiotic susceptibility test was done by the disk diffusion method (Kirby Bauer), according to the clinical laboratory standards institute criteria (CLSI) on Mueller-Hinton agar (Merck, Germany). The discs of antibacterial used in this study contained amikacin (30 ug), ceftazidime (30 ug), ciprofloxacin (5 ug), cefazolin (30 ug), imipenem (10 ug), co-trimoxazole (25 ug), and nalidixic acid (30 ug) by disc diffusion method.

### 3.3. Minimum Inhibitory Concentration and Phenotypic Confirmatory Tests

To determine the production of broad-spectrum beta-lactamase enzymes, phenotypic confirmatory tests were performed, including ceftazidime (30 ug) and ceftazidime/clavulanic acid (10 ug) disc. If the diameter of halo ceftazidime/clavulanic acid was greater than 5mm in comparison to ceftazidime, ESBL production was confirmed. Then MIC for ceftazidime, cefotaxime, and ceftriaxone was determined by E-test tape method. The E-test has been reported to be a simple and correct different method for determining the antimicrobial susceptibility of different microorganisms. The MIC for ceftazidime, cefotaxime, and ceftriaxone was determined according to the general committee's clinical laboratory standard criteria for phenotypic ESBL-producing *Klebsiella* isolates using the E-test strip (16, 17).

### 3.4. DNA Extraction and PCR

The plasmid DNA was extracted by using a fermentas plasmid kit. The PCR test was performed using specific primers for OXA-10 and PER genes (18). The 16srRNA gene was also used for internal control. Positive PCR control is *Klebsiella pneumoniae* ATCC 700603 (19). The sequence of the primers was shown in Table 1.

**Table 1.** The Sequence of the Primers Used in This Study

Primers	Sequences	Genes	Size (bp)
<b>OXA-10</b>		blaOXA-10	720
F	GTCCTTCGAGTACGGCATT		
R	ATTTCTTAGCGGCACTTAC		
<b>PER</b>		blaPER	927
F	ATGAATGTCATCACAAATG		
R	TCAATCCGGACTCACT		
<b>16SrRNA</b>		Internal	420
F	AGGCCTTCGGGTTGTAAAGT		
R	ACCTCCAAGTCGACATCGTT		

#### 4. Results

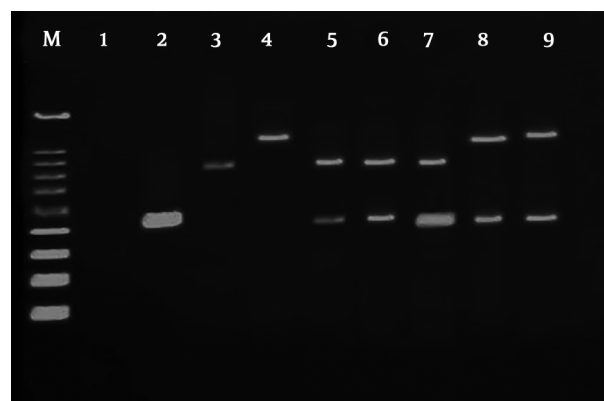
In this study, from 45 outpatients, 18 were female and 27 were male. Of the 45 inpatients, 22 were female and 23 were male. In terms of age, the minimum age was 6 years and the maximum age was 64 years. From 90 isolates of *Klebsiella*, 82 isolates belonged to *K. pneumoniae* species and 8 isolates to *K. oxytokka* species. In this study, out of 45 inpatient samples, 40 isolates of *K. pneumoniae* and 5 isolates of *K. oxytokka* were isolated. Also, 42 isolates of *K. pneumoniae* and 3 isolates of *K. oxytokka* were gathered from outpatient infections. The susceptibility pattern of different antibiotics, as well as the percentage of resistance in inpatients and outpatients, were presented in Table 2. As shown in Table 2, the highest antibiotic resistance in inpatient and outpatients was related to antibiotic sulfamethoxazole-trimethoprim, which was 86.6% and 66.7% in the inpatient and outpatient, respectively.

The results indicated that antibiotic resistance was higher in inpatients compared to outpatients. Also, based on the results, the lowest antibiotic resistance was found in amikacin antibiotics in inpatients and outpatients, which was 6.7% and 2.2%, respectively. Antibiotic resistance patterns based on MIC were provided in Tables 3 - 5. Based on Fischer's exact test, P value < 0.001 was considered significant. The results showed that there was a significant relationship between increasing the MIC of ceftazidime, cefotaxime, and ceftriaxone and *Klebsiella* strains isolated from UTI. A confirmatory phenotypic test was used to confirm the production of broad-spectrum  $\beta$ -lactamase enzymes.

Based on the results of this test, 30 isolates of inpatient samples and 8 isolates of outpatients were positive for producing of ESBLs. PCR method was used to determine the frequency of  $\beta$ -lactamase genes. After the completion of the PCR steps, electrophoresis was applied to agarose gel to observe and separate the bands. After completion of electrophoresis, the agarose gel was stained (Figure 1). Accordingly, the frequency of  $\beta$ -lactamase OXA-10 and PER genes in Tables 6 and 7 is shown in two groups of inpatient and outpatient specimens. According to the results, there was a significant relationship between the presence of  $\beta$ -lactamase genes in inpatients and outpatients.

#### 5. Discussion

*Klebsiella pneumoniae* is one of the most important bacteria that we are witness to the emergence and development of resistant strains with MDR in recent decades due to excessive and incorrect consumption of antibiotics. Therefore, in such a situation, rapid diagnosis of MDR strains and the provision of appropriate therapeutic approach for both the patient and the treatment system is very important. The release of drug resistance factors



**Figure 1.** Agarose stained gel; M marker, 1: negative control, 2: positive control of internal control, 3: positive control of Oxa-10, 4: positive control of PER, 5,6 and 7 samples containing Oxa-10 gene and internal control gene, 8 and 9 samples PER and internal gene

among Gram-negative bacteria increases the resistance of these microorganisms to antimicrobial antibiotics, the persistence of these infections, and the prolongation of the patient's therapeutic procedures (20-22).

The present study was carried out to determine the antibiotic susceptibility pattern on *Klebsiella* isolates from urinary tract infections. The highest antibiotic resistance is in the patients receiving trimethoprim-sulfamethoxazole antibiotics. The results indicated that antibiotic resistance was high in inpatients compared to outpatients. Also, based on the results, the lowest antibiotic resistance was found in amikacin antibiotic in the inpatients and outpatients. Current findings indicated that antibiotic resistance is higher in inpatients than outpatients. Saeidi et al., in 2014, conducted an antibiotic resistance study for ceftriaxone (100%) and ceftazidime (100%), which was higher than the resistance pattern in this study for these antibiotics (20). In a study conducted by Eftekhar et al., in 2012, antibiotic resistance was evaluated to third-generation cephalosporins such as ceftazidime, ceftriaxone plus other antibiotics such as amikacin and nitrofurantoin, with 41%, 2%, 37%, 41%, and 49%. The percentage was reported to be similar to the antibiotic resistance pattern in this study (23).

In a study conducted by Gholipour et al. in Isfahan, the results of the antibiotic resistance pattern for nalidixic acid, gentamicin, cefepime, and amikacin were lower than those reported in this study, which is consistent with our study for the low resistance to amikacin (24). The confirmed phenotypic test results in this study indicated that 66.6% and 17.7% of the isolates were able to produce ESBL among inpatients and outpatients. According to a study conducted by Jalalpoor and Mobasherizadeh, in Esfahan in

**Table 2.** Antibiotic Susceptibility Pattern of *Klebsiella* Species

Antibiotics	Inpatient			Outpatient			P Value
	S	I	R	S	I	R	
Amikacin	34 (75.6)	8 (17.7)	3 (6.7)	41 (91.1)	3 (6.7)	1 (2.2)	< 0.001
Ceftazidime	12 (26.6)	3 (6.7)	30 (66.6)	32 (71.1)	5 (11.1)	8 (17.8)	< 0.001
Ciprofloxacin	20 (44.4)	10 (22.2)	15 (34.4)	32 (71.1)	4 (8.9)	9 (20)	< 0.001
Imipenem	18 (40)	3 (6.7)	24 (53.3)	30 (66.7)	5 (11.1)	10 (22.2)	< 0.001
Ceftriaxone	11 (24.4)	2 (4.5)	32 (71.1)	31 (68.8)	2 (4.5)	12 (26.7)	< 0.001
Cefotaxime	13 (29)	1 (2.2)	31 (68.8)	30 (66.7)	6 (13.3)	9 (20)	< 0.001
Sulfamethoxazole-trimethoprim	4 (9)	2 (4.4)	39 (86.6)	10 (22.2)	5 (11.1)	30 (66.7)	< 0.001

**Table 3.** Antibiotic Resistance Pattern of Ceftriaxone Based on MIC

Group	Ceftriaxone			Totals	P Value
	S	I	R		
Inpatient	11	2	32	45	< 0.001
Outpatient	31	2	12	45	
Totals	42	4	44	90	

**Table 4.** Antibiotic Resistance Pattern of Cefotaxime Based on MIC

Group	Cefotaxime			Totals	P Value
	S	I	R		
Inpatient	13	1	31	45	< 0.001
Outpatient	30	6	9	45	
Totals	43	7	40	90	

**Table 5.** Antibiotic Resistance Pattern of Ceftazidime Based on MIC

Group	Ceftazidime			Totals	P Value
	S	I	R		
Inpatient	12	3	30	45	< 0.001
Outpatient	32	5	8	45	
Totals	44	8	38	90	

2010, the prevalence of ESBLs in inpatients was 64% with a high incidence of ESBLs in this study for inpatients (25).

Generally, the prevalence of ESBL production is different in each region and country due to medical staff's performance and antibiotic use patterns, infection control measured in the hospital, and epidemiologic factors. It seems that the selective pressure exerted by the use of broad-spectrum antibiotics and the misuse of antibiotics with the high potential for release of plasmid genes of group A  $\beta$ -Lactamase (by conjugation) are main factors in the development of ESBL-producing strains in this region over time (26, 27). Feizabadi et al. reported the prevalence of these enzymes as 44.5% and 72.1% in two separate studies

**Table 6.** Frequency of  $\beta$ -Lactamase OXA-10 Genes and PER in Outpatients and Inpatients

Group	Positive	Negativ	P Value
<b>OXA-10</b>			< 0.001
Inpatient	30	15	
Outpatient	4	51	
Totals	34	44	
<b>PER</b>			< 0.001
Inpatient	10	35	
Outpatient	1	44	
Totals	11	79	

**Table 7.** Frequency of ESBL-Producing *Klebsiella* spp. Isolates in Outpatients and Inpatients

Group	ESBL		Totals	P Value
	Positive	Negative		
Inpatient	30	15	45	< 0.001
Outpatient	8	37	45	
Totals	38	52	90	

in Tehran (28, 29). In South Korea, the prevalence of ESBLs was 30%, in India, 68%, in Taiwan, 28.4%, and in the United States, 44% (30-33). In the present study, the frequency of  $\beta$ -lactamase OXA-10 and PER genes were 66.6% and 8.8%, respectively, in inpatients and 22.2% and 2.2%, respectively, in outpatients. In previous studies, the frequency of the OXA gene in *Klebsiella* and other bacteria from the *Enterobacteriaceae* family was more than PER and their frequency was higher in inpatients than outpatients. In a study conducted by Jabalameli et al. in 2011, and 112 samples were isolated, the prevalence of  $\beta$ -lactamase genes, including OXA-10, PER, and VEB was reported as 70%, 50%, and 31%, respectively. This research is consistent with our study for the prevalence of OXA-10 gene, which is more than PER (34). As in the study of Farshadzadeh et al. in 2014, the prevalence

of PER, OXA, and CTX-M genes in 176 isolated strains from inpatients was 55%, 66% and 1%, respectively (10). In a study by Luo et al. in 2011, to investigate the prevalence of broad-spectrum  $\beta$ -lactamases in 59 isolates of *Klebsiella*, the frequency of OXA, SHV, and CTX-M genes was reported to be 22.1%, 91.5%, and 59.9%, respectively. The prevalence of OXA-10 gene is lower than that of the present study, which can be explained by the fact that Luo et al. worked on fewer isolates (35).

The prevalence of PER in bacteria such as *Klebsiella* and *E. coli* is usually as low as in the following studies. However, the prevalence is much higher in other bacteria such as *Pseudomonas* and *Acinetobacter*. In this regard, in a study conducted by Shacheraghi et al. in 2010 in Iran, 120 samples of *P. aeruginosa* were isolated from burn infections, which the prevalence of  $\beta$ -lactamase gene PER-1 was reported to be 68% (36), and in another study by Fallah et al. in 2014 who investigated the prevalence of PER, VEB, IMP and VIM genes in Iran on 108 isolates of *Acinetobacter baumannii*, the prevalence of these genes was reported as 71, 36, 3, and 15%, respectively (37). According to the current study, the most effective antibiotics for the treatment of UTIs caused by ESBLs-producing *Klebsiella* strains are Amikacin and Imipenem.

The reasons for the effectiveness of imipenem may be low consumption of this antibiotic in the medical staff, its lack of outpatient use in the community since this antibiotic in Iran is a hospital drug and is not prescribed without indication, as well as the absence or low presence of carbapenemase enzymes in strains related to the family of *Enterobacteriaceae* (26, 38, 39). The extensive and arbitrary use of cephalosporins has led to the proliferation of ESBLs-producing organisms, which makes these organisms resistant to a wide range of antibiotics from this category. Infections caused by these resistant microorganisms prolong the treatment process and increase the length of the hospitalization and increase the risk of death.

### 5.1. Conclusions

In this study, although a number of strains were resistant to several drug classes, they lacked the  $\beta$ -lactamase OXA-10 and PER genes. According to numerous studies, the expression of the ESBL phenotype results from the production of broad-spectrum plasmid of group A; therefore, the difference in the prevalence of positive phenotypes and negative genotypes should be sought in the presence of other  $\beta$ -lactamase genes of the group A that cause different outbreaks in different regions.

### Acknowledgments

We thank all personnel of the Kashani and Hajar Hospitals microbiology laboratory for their friendly contribu-

tion.

### Footnotes

**Authors' Contribution:** Farshad Kakian, Abolfazl Gholipour and Behnam Zamanzad: design of study; Farshad Kakian, Abolfazl Gholipour, Behnam Zamanzad and Hasan Najafi: acquisition of data; Milad Shahini Shams Abadi, Abolfazl Gholipour and Masoud Amiri: evaluation of data and preparation of the manuscript; Milad Shahini Shams Abadi, Behnam Zamanzad, Farshad Kakian and Hasan Najafi: assessment of data.

**Conflict of Interests:** Authors declared no conflict of interest.

**Ethical Considerations:** This study was approved by the Ethics Committee of Shahrekord University of Medical Sciences (Register code: IR.SKUMS.REC.1395.176). The written informed consent was obtained from all the participants.

**Funding/Support:** This research was supported by the grant of the research project of the Shahrekord University of Medical Sciences (Shahrekord, Iran).

### References

- Gupta K, Hooton TM, Stamm WE. Increasing antimicrobial resistance and the management of uncomplicated community-acquired urinary tract infections. *Ann Intern Med.* 2001;**135**(1):41-50. [PubMed: [11434731](#)].
- Jepson RG, Craig JC. Cranberries for preventing urinary tract infections. *Cochrane Database Syst Rev.* 2008;(1). CD001321. doi: [10.1002/14651858.CD001321.pub4](#). [PubMed: [18253990](#)].
- Baroud M, Dandache I, Araj GF, Wakim R, Kanj S, Kanafani Z, et al. Underlying mechanisms of carbapenem resistance in extended-spectrum beta-lactamase-producing *Klebsiella pneumoniae* and *Escherichia coli* isolates at a tertiary care centre in Lebanon: Role of OXA-48 and NDM-1 carbapenemases. *Int J Antimicrob Agents.* 2013;**41**(1):75-9. doi: [10.1016/j.ijantimicag.2012.08.010](#). [PubMed: [23142087](#)].
- Chaudhary B, Insan NG, Payal N. ESBL and AmpC detection in *Klebsiella* species by non molecular methods. *Int J Curr Microbiol App Sci.* 2014;**3**(4):323-9.
- Podschun R, Ullmann U. *Klebsiella* spp. as nosocomial pathogens: Epidemiology, taxonomy, typing methods, and pathogenicity factors. *Clin Microbiol Rev.* 1998;**11**(4):589-603. [PubMed: [9767057](#)]. [PubMed Central: [PMC88898](#)].
- Oteo J, Cercenado E, Fernandez-Romero S, Saez D, Padilla B, Zamora E, et al. Extended-spectrum-beta-lactamase-producing *Escherichia coli* as a cause of pediatric infections: Report of a neonatal intensive care unit outbreak due to a CTX-M-14-producing strain. *Antimicrob Agents Chemother.* 2012;**56**(1):54-8. doi: [10.1128/AAC.05103-11](#). [PubMed: [21986825](#)]. [PubMed Central: [PMC3256038](#)].
- Timofte D, Dan M, Maciucă IE, Ciucu L, Dabija ER, Guguianu E, et al. Emergence of concurrent infections with colistin-resistant ESBL-positive *Klebsiella pneumoniae* and OXA-23-producing *Acinetobacter baumannii* sensitive to colistin only in a Romanian cardiac intensive care unit. *Eur J Clin Microbiol Infect Dis.* 2015;**34**(10):2069-74. doi: [10.1007/s10096-015-2453-3](#). [PubMed: [26239064](#)].
- Korzeniewska E, Harnisz M. Beta-lactamase-producing *Enterobacteriaceae* in hospital effluents. *J Environ Manage.* 2013;**123**:1-7. doi: [10.1016/j.jenvman.2013.03.024](#). [PubMed: [23563146](#)].

9. Shah AA, Hasan F, Ahmed S, Hameed A. Characteristics, epidemiology and clinical importance of emerging strains of Gram-negative bacilli producing extended-spectrum beta-lactamases. *Res Microbiol.* 2004;**155**(6):409–21. doi: [10.1016/j.resmic.2004.02.009](https://doi.org/10.1016/j.resmic.2004.02.009). [PubMed: [15249058](https://pubmed.ncbi.nlm.nih.gov/15249058/)].
10. Farshadzadeh Z, Khosravi AD, Alavi SM, Parhizgari N, Hoveizavi H. Spread of extended-spectrum beta-lactamase genes of blaOXA-10, blaPER-1 and blaCTX-M in *Pseudomonas aeruginosa* strains isolated from burn patients. *Burns.* 2014;**40**(8):1575–80. doi: [10.1016/j.burns.2014.02.008](https://doi.org/10.1016/j.burns.2014.02.008). [PubMed: [24767142](https://pubmed.ncbi.nlm.nih.gov/24767142/)].
11. Mirsalehian A, Feizabadi M, Nakhjavani FA, Jabalameli F, Goli H, Kalantari N. Detection of VEB-1, OXA-10 and PER-1 genotypes in extended-spectrum beta-lactamase-producing *Pseudomonas aeruginosa* strains isolated from burn patients. *Burns.* 2010;**36**(1):70–4. doi: [10.1016/j.burns.2009.01.015](https://doi.org/10.1016/j.burns.2009.01.015). [PubMed: [19524369](https://pubmed.ncbi.nlm.nih.gov/19524369/)].
12. Khan SA, Feroz F, Noor R. Study of extended-spectrum  $\beta$ -lactamase-producing bacteria from urinary tract infections in Bangladesh. *Tzu Chi Med J.* 2013;**25**(1):39–42. doi: [10.1016/j.tcmj.2013.01.008](https://doi.org/10.1016/j.tcmj.2013.01.008).
13. Willems E, Verhaegen J, Magerman K, Nys S, Cartuyvels R. Towards a phenotypic screening strategy for emerging beta-lactamases in Gram-negative bacilli. *Int J Antimicrob Agents.* 2013;**41**(2):99–109. doi: [10.1016/j.ijantimicag.2012.07.006](https://doi.org/10.1016/j.ijantimicag.2012.07.006). [PubMed: [23280443](https://pubmed.ncbi.nlm.nih.gov/23280443/)].
14. Shahini Shams-Abadi M, Halaji M, Hoseini-Alfatemi SM, Gholipour A, Mojtahedi A, Sedigh Ebrahim-Saraie H. Epidemiology of toxic shock syndrome toxin-1 harboring *Staphylococcus aureus* obtained from clinical samples in Iran: A systematic review and meta-analysis. *Ann Ig.* 2018;**30**(5):391–400. doi: [10.7416/ai.2018.2239](https://doi.org/10.7416/ai.2018.2239). [PubMed: [30062367](https://pubmed.ncbi.nlm.nih.gov/30062367/)].
15. Shahini Shams Abadi M, Siadat SD, Vaziri F, Davari M, Fateh A, Pourazar S, et al. Distribution and diversity of hmw1A among invasive non-typeable haemophilus influenzae isolates in Iran. *Avicenna J Med Biotechnol.* 2016;**8**(2):99–102. [PubMed: [27141269](https://pubmed.ncbi.nlm.nih.gov/27141269/)]. [PubMed Central: [PMC4842248](https://pubmed.ncbi.nlm.nih.gov/PMC4842248/)].
16. Gastmeier P. Nosocomial urinary tract infections: Many unresolved questions. *Clin Microbiol Infect.* 2001;**7**(10):521–2. [PubMed: [11683791](https://pubmed.ncbi.nlm.nih.gov/11683791/)].
17. Nasehi L, Shahcheraghi F, Nikbin VS, Nematzadeh S. PER, CTX-M, TEM and SHV beta-lactamases in clinical isolates of *Klebsiella pneumoniae* isolated from Tehran, Iran. *Iran J Basic Med Sci.* 2010;**13**(3):111–8.
18. Kiratisin P, Apisarnthanarak A, Laesripa C, Saifon P. Molecular characterization and epidemiology of extended-spectrum-beta-lactamase-producing *Escherichia coli* and *Klebsiella pneumoniae* isolates causing health care-associated infection in Thailand, where the CTX-M family is endemic. *Antimicrob Agents Chemother.* 2008;**52**(8):2818–24. doi: [10.1128/AAC.00171-08](https://doi.org/10.1128/AAC.00171-08). [PubMed: [18505851](https://pubmed.ncbi.nlm.nih.gov/18505851/)]. [PubMed Central: [PMC2493136](https://pubmed.ncbi.nlm.nih.gov/PMC2493136/)].
19. Damavandi MS, Gholipour A, Latif Pour M. Prevalence of class D carbapenemases among extended-spectrum beta-lactamases producing *Escherichia coli* isolates from educational hospitals in Shahrekord. *J Clin Diagn Res.* 2016;**10**(5):DC01–5. doi: [10.7860/JCDR/2016/17722.7739](https://doi.org/10.7860/JCDR/2016/17722.7739). [PubMed: [27462579](https://pubmed.ncbi.nlm.nih.gov/27462579/)]. [PubMed Central: [PMC4948386](https://pubmed.ncbi.nlm.nih.gov/PMC4948386/)].
20. Saeidi S, Ghamgosha M, Taheri RA, Shiri Y, Solouki M, Hassanpour K, et al. Phenotypic and genotypic detection of extended-spectrum  $\beta$ -lactamase (ESBL) producing *Escherichia coli* isolated from urinary tract infections in Zabol, Iran. *J Coastal Life Med.* 2014;**2**(9):732–7. doi: [10.12980/jclm.2.2014jclm-2014-0063](https://doi.org/10.12980/jclm.2.2014jclm-2014-0063).
21. Souli M, Galani I, Giamarellou H. Emergence of extensively drug-resistant and pandrug-resistant Gram-negative bacilli in Europe. *Euro Surveill.* 2008;**13**(47). [PubMed: [19021957](https://pubmed.ncbi.nlm.nih.gov/19021957/)].
22. Falagas ME, Kasiakou SK. Colistin: The revival of polymyxins for the management of multidrug-resistant gram-negative bacterial infections. *Clin Infect Dis.* 2005;**40**(9):1333–41. doi: [10.1086/429323](https://doi.org/10.1086/429323). [PubMed: [15825037](https://pubmed.ncbi.nlm.nih.gov/15825037/)].
23. Eftekhari F, Rastegar M, Gholipour M, Mansoursamaei N. Detection of extended spectrum B-lactamases in urinary isolates of *Klebsiella pneumoniae* in relation to Bla, Bla and Bla gene carriage. *Iran J Public Health.* 2012;**41**(3):127–32. [PubMed: [23113157](https://pubmed.ncbi.nlm.nih.gov/23113157/)]. [PubMed Central: [PMC3481709](https://pubmed.ncbi.nlm.nih.gov/PMC3481709/)].
24. Gholipour A, Soleimani N, Shokri D, Mobasherizadeh S, Kardi M, Baradaran A. Phenotypic and molecular characterization of extended-spectrum beta-lactamase produced by *Escherichia coli*, and *Klebsiella pneumoniae* isolates in an educational hospital. *Jundishapur J Microbiol.* 2014;**7**(10). e11758. doi: [10.5812/jjm.11758](https://doi.org/10.5812/jjm.11758). [PubMed: [25632322](https://pubmed.ncbi.nlm.nih.gov/25632322/)]. [PubMed Central: [PMC4295312](https://pubmed.ncbi.nlm.nih.gov/PMC4295312/)].
25. Jalalpoor S, Mobasherizadeh S. Frequency of ESBLs in *Escherichia coli* and *Klebsiella pneumoniae* strains isolated from hospitalized and out-patients with urinary tract infection in selective centers in Esfahan (2009-2010). *Razi J Med Sci.* 2011;**18**(85).
26. Sirot DL, Goldstein FW, Soussy CJ, Courtieu AL, Husson MO, Lemozy J, et al. Resistance to cefotaxime and seven other beta-lactams in members of the family Enterobacteriaceae: A 3-year survey in France. *Antimicrob Agents Chemother.* 1992;**36**(8):1677–81. [PubMed: [1416850](https://pubmed.ncbi.nlm.nih.gov/1416850/)]. [PubMed Central: [PMC192029](https://pubmed.ncbi.nlm.nih.gov/PMC192029/)].
27. Nathisuwan S, Burgess DS, Lewis J2. Extended-spectrum beta-lactamases: Epidemiology, detection, and treatment. *Pharmacotherapy.* 2001;**21**(8):920–8. [PubMed: [11718498](https://pubmed.ncbi.nlm.nih.gov/11718498/)].
28. Feizabadi MM, Etemadi G, Yadegarinia D, Rahmati M, Shabanpoor S, Bokaei S. Antibiotic-resistance patterns and frequency of extended-spectrum beta-lactamase-producing isolates of *Klebsiella pneumoniae* in Tehran. *Med Sci Monit.* 2006;**12**(11):BR362–5. [PubMed: [17072265](https://pubmed.ncbi.nlm.nih.gov/17072265/)].
29. Feizabadi MM, Mahamadi-Yeganeh S, Mirsalehian A, Mirafshar SM, Mahboobi M, Nili F, et al. Genetic characterization of ESBL producing strains of *Klebsiella pneumoniae* from Tehran hospitals. *J Infect Dev Ctries.* 2010;**4**(10):609–15. [PubMed: [21045352](https://pubmed.ncbi.nlm.nih.gov/21045352/)].
30. Jacoby GA. Extended-spectrum beta-lactamases and other enzymes providing resistance to oxymino-beta-lactams. *Infect Dis Clin North Am.* 1997;**11**(4):875–87. [PubMed: [9421705](https://pubmed.ncbi.nlm.nih.gov/9421705/)].
31. Shanthi M, Sekar U. Extended spectrum beta lactamase producing *Escherichia coli* and *Klebsiella pneumoniae*: Risk factors for infection and impact of resistance on outcomes. *J Assoc Physicians India.* 2010;**58** Suppl:41–4. [PubMed: [21568008](https://pubmed.ncbi.nlm.nih.gov/21568008/)].
32. Jain A, Roy I, Gupta MK, Kumar M, Agarwal SK. Prevalence of extended-spectrum beta-lactamase-producing Gram-negative bacteria in septicaemic neonates in a tertiary care hospital. *J Med Microbiol.* 2003;**52**(Pt 5):421–5. doi: [10.1099/jmm.0.04966-0](https://doi.org/10.1099/jmm.0.04966-0). [PubMed: [12721319](https://pubmed.ncbi.nlm.nih.gov/12721319/)].
33. Saurina G, Quale JM, Manikal VM, Oydna E, Landman D. Antimicrobial resistance in Enterobacteriaceae in Brooklyn, NY: Epidemiology and relation to antibiotic usage patterns. *J Antimicrob Chemother.* 2000;**45**(6):895–8. [PubMed: [10837447](https://pubmed.ncbi.nlm.nih.gov/10837447/)].
34. Jabalameli F, Mirsalehian A, Sotoudeh N, Jabalameli L, Aligholi M, Khoramian B, et al. Multiple-locus variable number of tandem repeats (VNTR) fingerprinting (MLVF) and antibacterial resistance profiles of extended spectrum beta lactamase (ESBL) producing *Pseudomonas aeruginosa* among burnt patients in Tehran. *Burns.* 2011;**37**(7):1202–7. doi: [10.1016/j.burns.2011.05.012](https://doi.org/10.1016/j.burns.2011.05.012). [PubMed: [21703769](https://pubmed.ncbi.nlm.nih.gov/21703769/)].
35. Luo Y, Yang J, Zhang Y, Ye L, Wang L, Guo L. Prevalence of beta-lactamases and 16S rRNA methylase genes amongst clinical *Klebsiella pneumoniae* isolates during plasmid-mediated quinolone resistance determinants. *Int J Antimicrob Agents.* 2011;**37**(4):352–5. doi: [10.1016/j.ijantimicag.2010.12.018](https://doi.org/10.1016/j.ijantimicag.2010.12.018). [PubMed: [21376540](https://pubmed.ncbi.nlm.nih.gov/21376540/)].
36. Shcheraghi F, Shakibaie MR, Noveiri H. Molecular identification of ESBL Genes blaGES-blaVEB-blaCTX-M blaOXA-blaOXA-4, blaOXA-10 and blaPER-in *Pseudomonas aeruginosa* strains isolated from burn patients by PCR, RFLP and sequencing techniques. *Int J Biol life Sci.* 2010;**3**(6):138–42.
37. Fallah F, Noori M, Hashemi A, Goudarzi H, Karimi A, Erfanimesh S, et al. Prevalence of bla NDM, bla PER, bla VEB, bla IMP, and bla VIM genes among *Acinetobacter baumannii* isolated from two hospitals of Tehran, Iran. *Scientifica (Cairo).* 2014;**2014**:245162. doi: [10.1155/2014/245162](https://doi.org/10.1155/2014/245162). [PubMed: [25133013](https://pubmed.ncbi.nlm.nih.gov/25133013/)]. [PubMed Central: [PMC4123593](https://pubmed.ncbi.nlm.nih.gov/PMC4123593/)].
38. Laupland KB, Parkins MD, Church DL, Gregson DB, Louie TJ, Conly JM, et al. Population-based epidemiological study of infections caused by carbapenem-resistant *Pseudomonas aeruginosa* in

- the calgary health region: Importance of metallo-beta-lactamase (MBL)-producing strains. *J Infect Dis.* 2005;**192**(9):1606-12. doi: [10.1086/444469](https://doi.org/10.1086/444469). [PubMed: [16206075](https://pubmed.ncbi.nlm.nih.gov/16206075/)].
39. Lagatolla C, Tonin EA, Monti-Bragadin C, Dolzani L, Gombac F, Bearzi C, et al. Endemic carbapenem-resistant *Pseudomonas aeruginosa* with acquired metallo-beta-lactamase determinants in European hospital. *Emerg Infect Dis.* 2004;**10**(3):535-8. doi: [10.3201/eid1003.020799](https://doi.org/10.3201/eid1003.020799). [PubMed: [15109432](https://pubmed.ncbi.nlm.nih.gov/15109432/)]. [PubMed Central: [PMC3322785](https://pubmed.ncbi.nlm.nih.gov/PMC3322785/)].