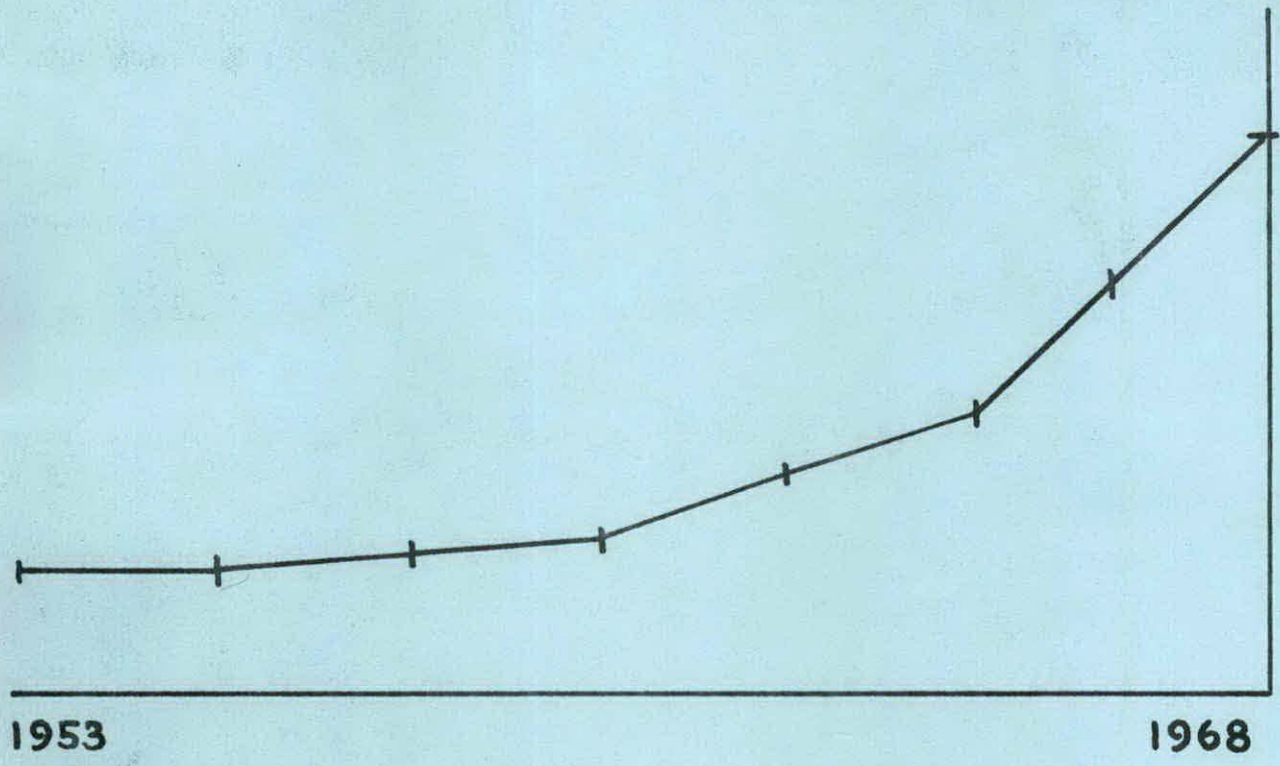


91A17-1-27-1

ACADEMIC HISTORY

of
Morehead State University
1953 - 1968



RESEARCH *and* DEVELOPMENT CENTER
Morehead State University
Morehead, Kentucky

ACADEMIC HISTORY
OF
MOREHEAD STATE UNIVERSITY

1953-1968

Research and Development Center
Morehead State University

INTRODUCTION

Many members of the administration and faculty have need for precise data on the academic growth of Morehead State University. In an attempt to respond to this need we have searched through past copies of the official publication of the university-the catalog and secured the enclosed information.

After carefully processing this data we present it to you for your utilization.

Morris L. Norfleet

DIAGRAM I

Composition of Morehead State University Faculty
by Rank and Total Faculty, 1953-54 to 1967-68

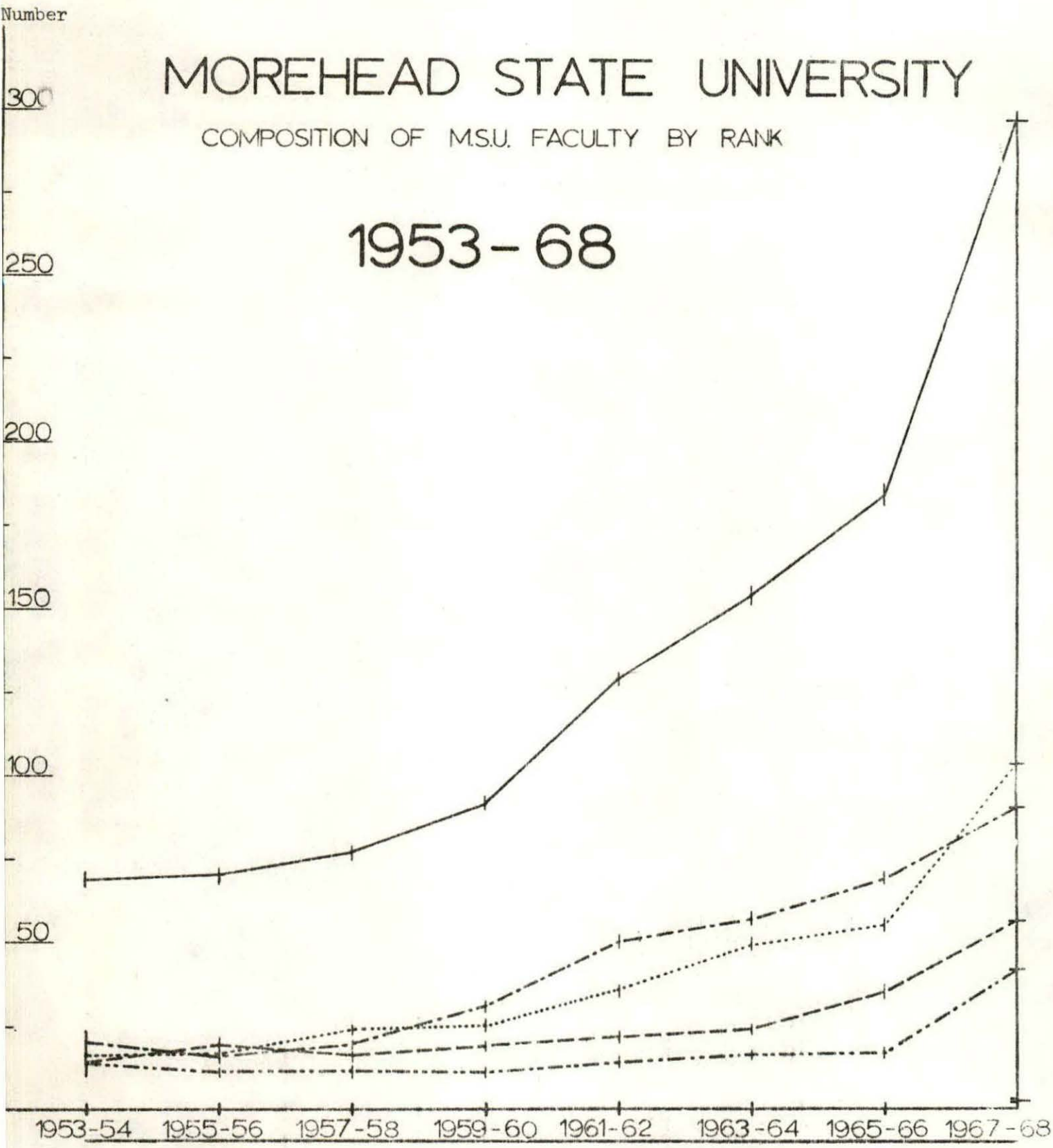
During the fiscal period of 1953-54 to 1967-68, the total number of faculty members at Morehead State University increased from 64 in 1953-54 to 296 in 1967-68. This growth represented a 362 percent increase for the 15-year period. The greatest increase in faculty number was observed during the 1965-66 to 1967-68 fiscal years. The growth rate during this four-year period was equal to 48 percent of the total 15-year increase in faculty number.

Diagram I indicates the composition of total faculty membership by the number of faculty members holding the rank of Professor, Associate Professor, Assistant Professor, and Instructor.

MOREHEAD STATE UNIVERSITY

COMPOSITION OF M.S.U. FACULTY BY RANK

1953-68



- TOTAL FACULTY
- INSTRUCTOR RANK TOTAL
- PROFESSOR RANK TOTAL
- ASSOCIATE PROFESSOR RANK TOTAL
- .-.- ASSISTANT PROFESSOR RANK TOTAL

ANNUAL DATA TABLE

Pertinent to Diagram I

CATALOG YEARS	TOTAL FACULTY	PROFESSOR RANK	ASSOCIATE PROF. RANK	ASSISTANT PROF. RANK	INSTRUCTOR RANK
1953-54	64	14	14	20	16
1955-56	64	12	19	16	17
1957-58	72	12	17	19	24
1959-60	86	11	19	31	25
1961-62	121	13	22	50	36
1963-64	146	16	24	57	49
1965-66	175	17	35	68	55
1967-68	296	38	61	91	104

DIAGRAM II

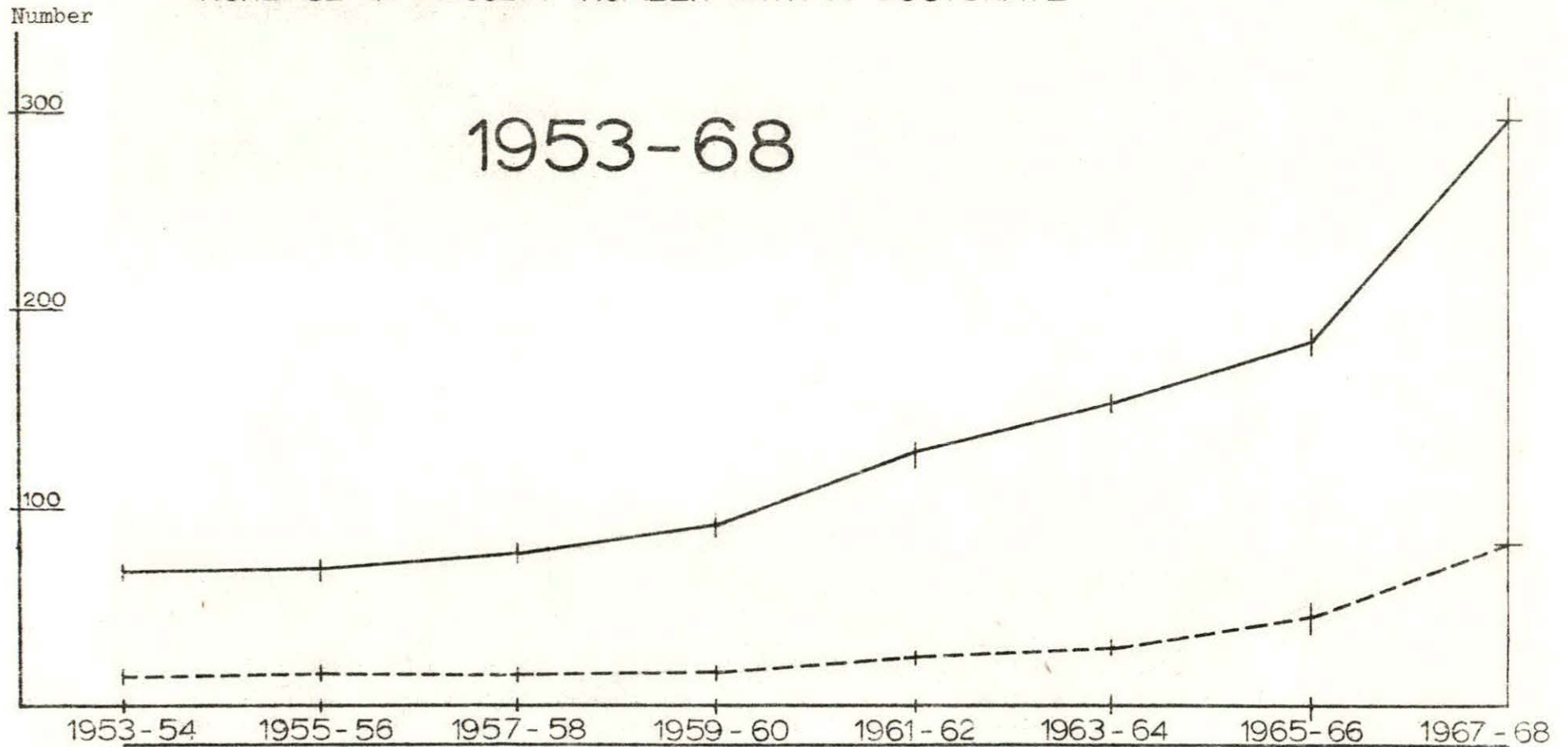
Increase in Morehead State University Faculty
with Doctorate Degree, 1953-54 to 1967-68

From fiscal years 1953-54 to 1967-68, it was determined that the total number of faculty members with an earned doctorate degree increased from 15 in 1953-54 to 80 in 1967-68. This growth represented a 433 percent increase during the 15-year period.

Total faculty growth for the same period increased from 64 in 1953-54 to 296 in 1967-68 which represented a growth rate of 362 percent.

MOREHEAD STATE UNIVERSITY

INCREASE IN FACULTY NUMBER WITH A DOCTORATE



— NUMBER OF TOTAL FACULTY

- - - NUMBER OF TOTAL FACULTY WITH A DOCTORATE DEGREE

DIAGRAM III

Increase in Number of Academic Degrees Offered at Morehead State University, 1953-54 to 1967-68

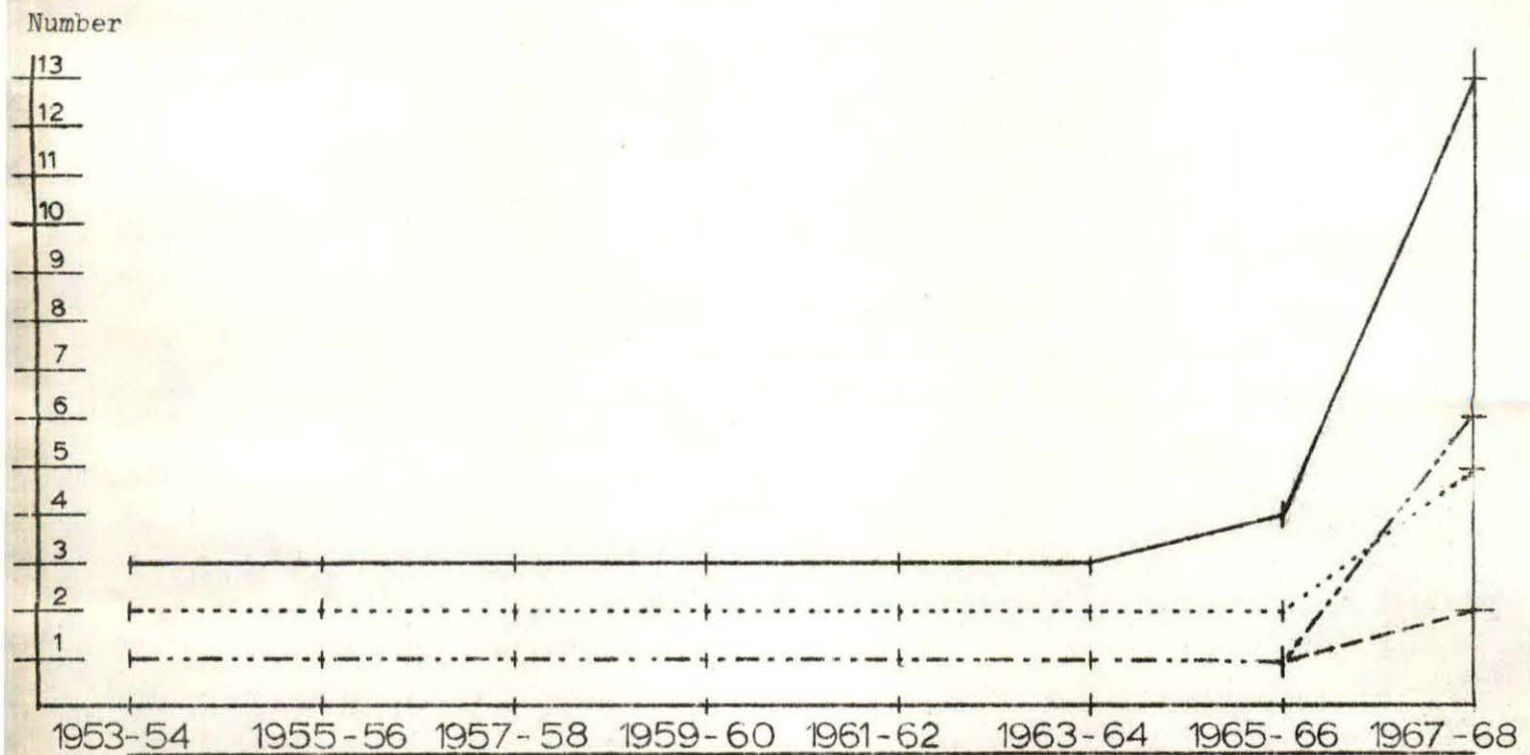
The number of academic degrees offered at Morehead State University did not change from the beginning of the study period, 1953-54, until 1965-66 when increases began to be made. The total number of degrees offered increased from 3 in 1953-54 to 13 in 1967-68. A new degree, the Associate Degrees (two-year) was offered initially in 1965-66. In the 1967-68 fiscal year the total number of master degrees offered increased from 1 to 6. One master degree, Master of Arts in Education, was offered prior to 1967-68. Five additional master degrees were offered in 1967-68. These are the Master of Arts in English and History, Master of Science in Biology, Master of Music, and a Master of Music Education Degree.

In the initial Graduate Bulletin printed in 1968, additional master degrees were offered in Chemistry, Business Education, Psychology, and Higher Education. Also listed in this bulletin was the Joint Doctoral Program with the University of Kentucky.

MOREHEAD STATE UNIVERSITY

ACADEMIC DEGREES OFFERED BY M.S.U.

1953-68



- TOTAL NUMBER OF DEGREES OFFERED
- TOTAL NUMBER OF UNDERGRADUATE DEGREES OFFERED (4yr.)
- · - · - TOTAL NUMBER OF GRADUATE DEGREES OFFERED
- - - - TOTAL NUMBER OF ASSOCIATE DEGREES OFFERED (2yr.)

DIAGRAM IV

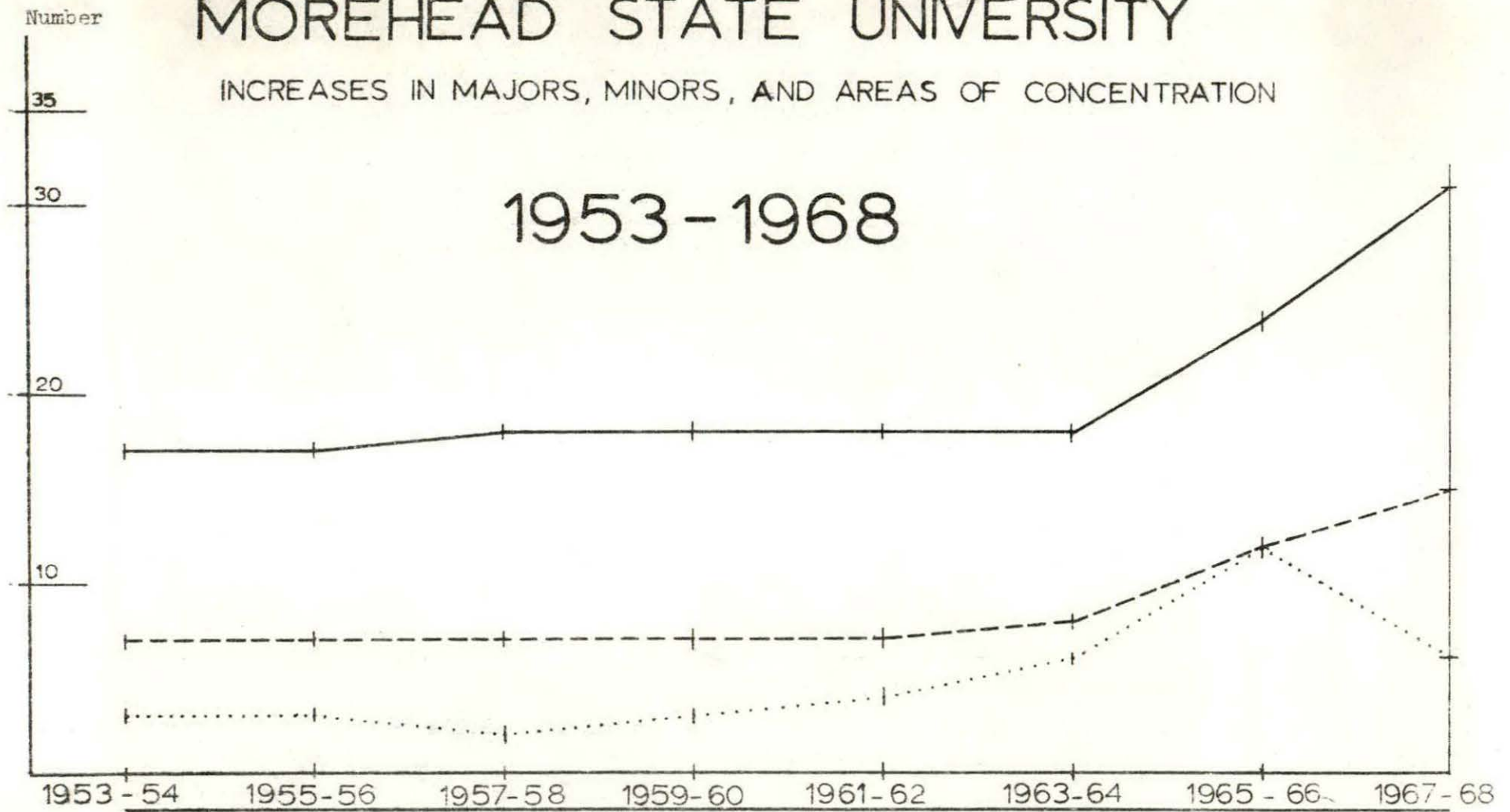
Increase in Academic Majors, Minors, and Areas of Concentration
at Morehead State University, 1953-54 to 1967-68

During the period 1953-54 to 1967-68, the number of majors at Morehead State University increased 82 percent from 17 in 1953-54 to 31 in 1967-68, During the same period, minors (but not majors) increased 100 percent from 3 in 1953-54 to 6 in 1967-68. The number of Areas of Concentration offered increased 114 percent from 7 in 1953-54 to 15 in 1967-68.

MOREHEAD STATE UNIVERSITY

INCREASES IN MAJORS, MINORS, AND AREAS OF CONCENTRATION

1953-1968



- TOTAL NUMBER OF ACADEMIC MAJORS OFFERED
- - - TOTAL NUMBER OF ACADEMIC AREAS OF CONCENTRATION OFFERED
- TOTAL NUMBER OF ACADEMIC MINORS (BUT NO MAJOR) OFFERED

DIAGRAM V

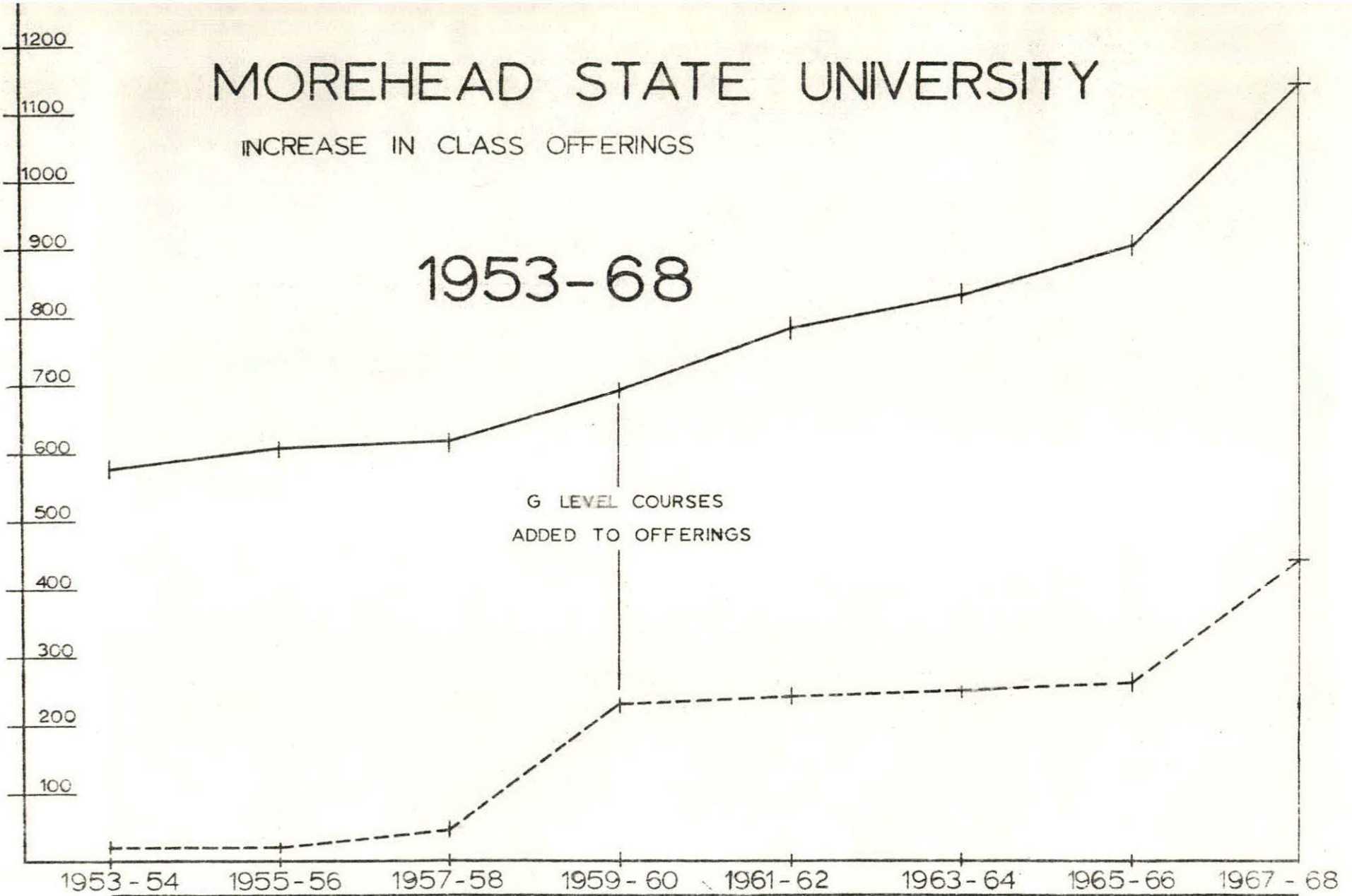
Increase in Class Offerings at Morehead State University
1953-54 to 1967-68

The total number of class offerings at Morehead State University increased 99.3 percent from 575 in 1953-54 to 1,146 in 1967-68. The total number of graduate class offerings increased 1,741 percent from 24 in 1953-54 to 442 in 1967-68. The addition of "G" level courses in 1959-60 greatly improved the institution's capability of providing graduate courses in the curriculum. The "G" courses were 300 and 400 level courses which could be taken for graduate credit if so designated by the affixed "G" (400 G).

MOREHEAD STATE UNIVERSITY

INCREASE IN CLASS OFFERINGS

1953-68



— TOTAL NUMBER OF CLASSES OFFERED

- - - TOTAL NUMBER OF GRADUATE CREDIT CLASSES OFFERED