



2019

Carlisle Photography Studio Collection - Accession 1712

Rock Hill, SC

Rock Hill History

Marion Carlisle

Ora Lee Carlisle



**WINTHROP UNIVERSITY
LOUISE PETTUS ARCHIVES & SPECIAL COLLECTIONS**

MANUSCRIPT COLLECTION

ACCESSION 1712

CARLISLE PHOTOGRAPHY STUDIO COLLECTION

1901-1937, nd

1 box, 9 folders

**WINTHROP UNIVERSITY
LOUISE PETTUS ARCHIVES & SPECIAL COLLECTIONS**

MANUSCRIPT COLLECTION

ACC. NO.: 1712
ADDITIONS: _____, _____, _____

PROCESSED BY: Andrew Johnston
DATE: November 11, 2019
NO. OF SECTIONS: 2

CARLISLE PHOTOGRAPHY STUDIO COLLECTION

I

The Carlisle Photography Studio Collection was received by the Louise Pettus Archives and Special Collections from the York County Library via Jason Hyatt on August 8, 2019. The collection was originally donated to the York County library by Ava Carlisle Snipes in 1982.

Linear feet of shelf space occupied: .25
Approximate number of pieces: 36 and 1 bound volume

Restrictions: Open to researchers under the rules and regulations of the Louise Pettus Archives & Special Collections at Winthrop University.

Literary Rights: For information concerning literary rights please contact the Louise Pettus Archives & Special Collections at Winthrop University.

Scope and Content Note: **This collection consists of photographs of the Rock Hill area from the early 20th century taken mostly by Marion Carlisle (1859-1940) who operated the Carlisle photography Studio in Rock Hill SC and several taken by his daughter Ora Lee Carlisle (1902-1969). The photographs include several scenes of the 1901 or 1902 flood, 1903 train wreck, 1916 flood, and the 1926 tornado that struck Rock Hill. Other scenes include downtown Rock Hill, Main Street, White Street, Hampton Street, Train depot, St. Johns Methodist Church, Kings Mountain Park Monument, Confederate Park, Central School, the Rock Hill Dam, Winthrop College, and several photographs of the Great Falls Dam being built including the lock keepers house (known as the "Rock House") and of the Great Falls itself.**

II

DESCRIPTION OF SERIES

<u>Box</u>	<u>Folder</u>	<u>Series</u>	<u>Year(s)</u>
1	1	FLOOD This series consists two photographs. One is labeled Flood- "At the Dam" 1901 or 1902 Rock Hill, S.C." The other is labeled "Catawba Power Co's Works, Rock Hill, SC."	1901
1	2	TRAIN WRECK This series consists of four photographs (2 are the same) of a train wreck on the Southern Railway trestle at Fishing Creek. The trestle gave way underneath the train and seven people died in the wreck.	Sept. 3, 1903
1	3	FLOOD This series consists of photographs of the damage caused by the historic flood of 1916. The images show the remains of the Southern Rail Road trestle over the Catawba River between Rock Hill and Fort Mill, SC which was destroyed.	1916
1	4	TORNADO This series consists of images of the damage caused by a tornado in Rock hill, SC on November 26, 1926. The images show several destroyed local homes, the Methodist Church on Main Street, and to a local Mill.	Nov. 26, 1926
1	5	DOWNTOWN This series consists of photographs of Downton Rock Hill. One is labeled "First Market Day- May 1915, On The Woolworth Lot, Fords and Mules Cooperated That Day," another shows Main Street with banners for Redpath Chautauqua from the 1920s, another is of a parade down Main Street labeled "Rock Hill Drum and Bugles Corps Leading In Parade of National Band Association June 8, 1937, and another of Hampton Street between Main Street and Black Street looking North, Wallace "Buck" Bryant in foreground.	1915, 1920s, 1937
1	6	STREETS This series consist of a few images of White Street and East Main Street.	1920s-1930s
1	7	CHURCHES This series consists of a couple images of the old St. Johns Methodist Church and the new St. Johns Methodist Church.	1920s, 1930s

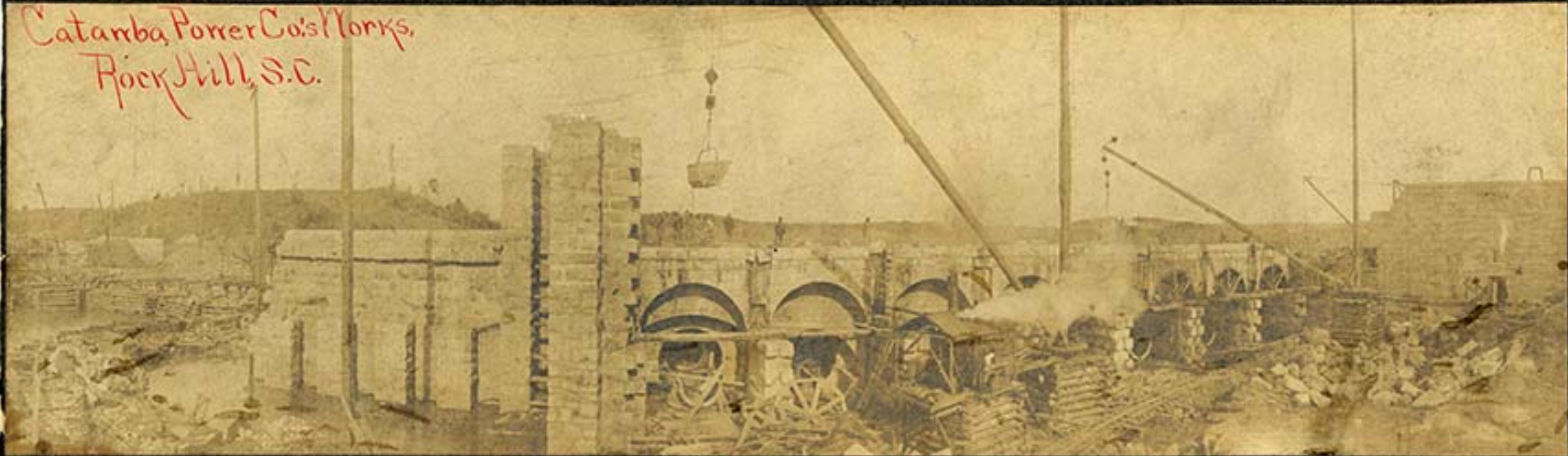
II

DESCRIPTION OF SERIES (cont.)

<u>Box</u>	<u>Folder</u>	<u>Series</u>	<u>Year(s)</u>
1	8	MISCELLANEOUS ROCK HILL This series consist of several images of Rock Hill including a photograph of the Rock Hill Train Depot (ca1900), an image of Main Building and Margaret Nance Hall at Winthrop College (ca1905), two photographs of Confederate Park (ca1925), and a photograph of Central School on East Black Street (ca1920s).	ca1900, ca1905, ca1920s, ca1925
1	9	UNIDENTIFIED This series consists of a photograph of an unidentified pier in a bay with a town and mountains in the background.	ca.1922
--	--	PHOTOGRAPH ALBUM This photograph album contains photographs of the Great Falls, the Great Falls Dam and Lockkeepers House ("Rock House"), Rock Hill Streets and Downtown, Kings Mountain Park Monument (labeled "about 1909"), a couple images of Bogalusa LA, and several of an unidentified railroad and mountains.	ca1909



Catawba Power Co's Works,
Rock Hill, S.C.



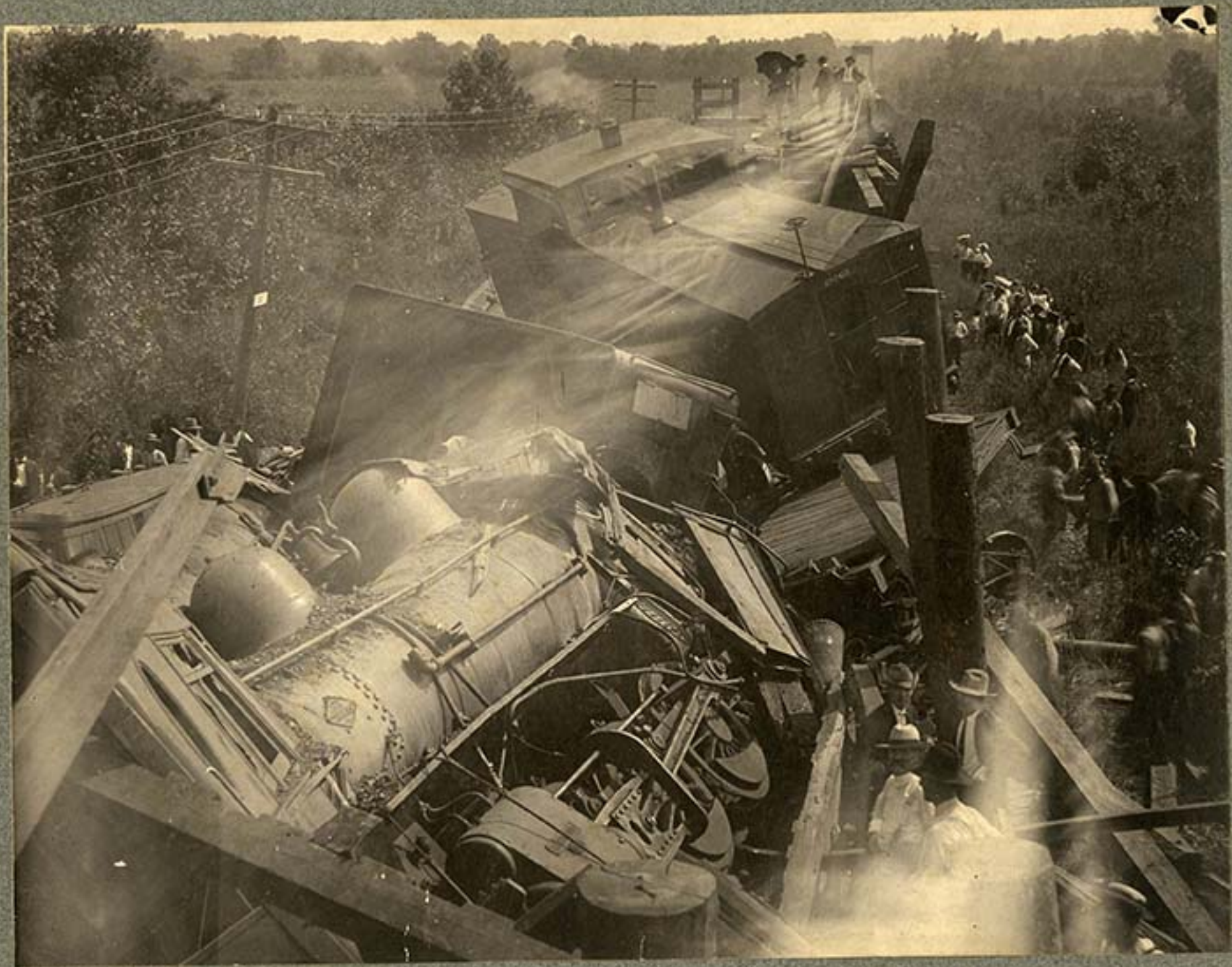
Flood - "At the Dam" - 1901 or 1902
Rock Hill, S.C.



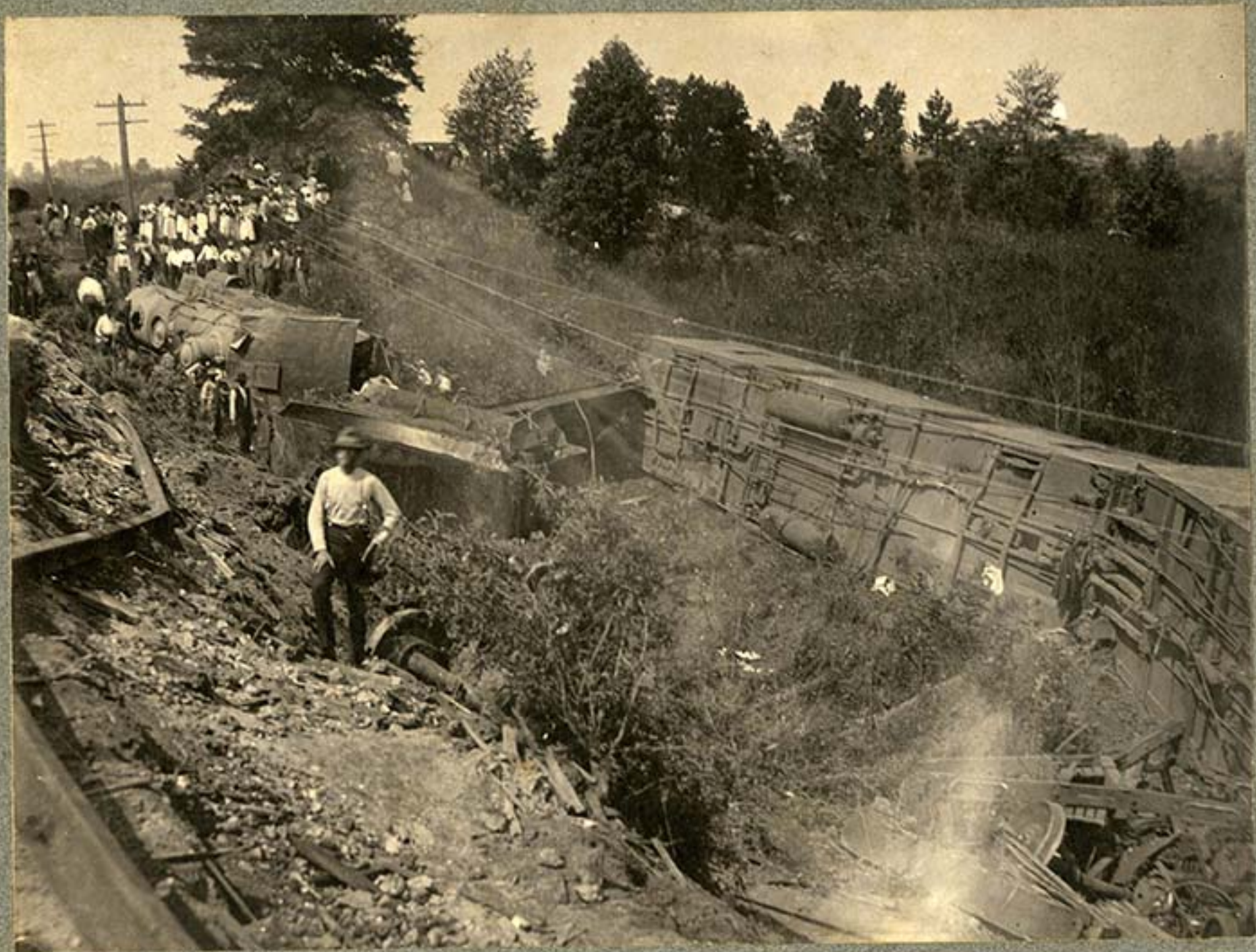




W. Carlisle
Haver Hills N.Y.

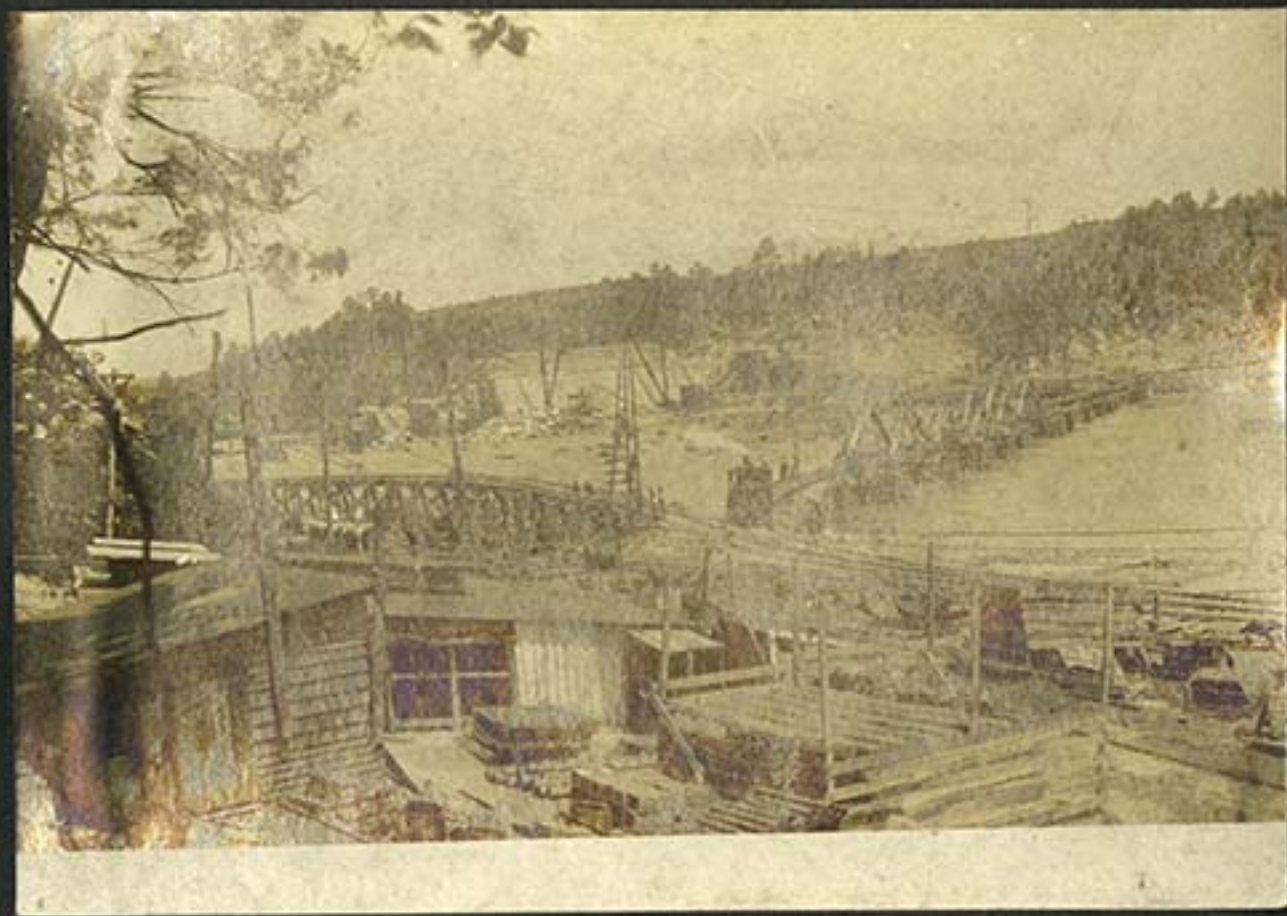


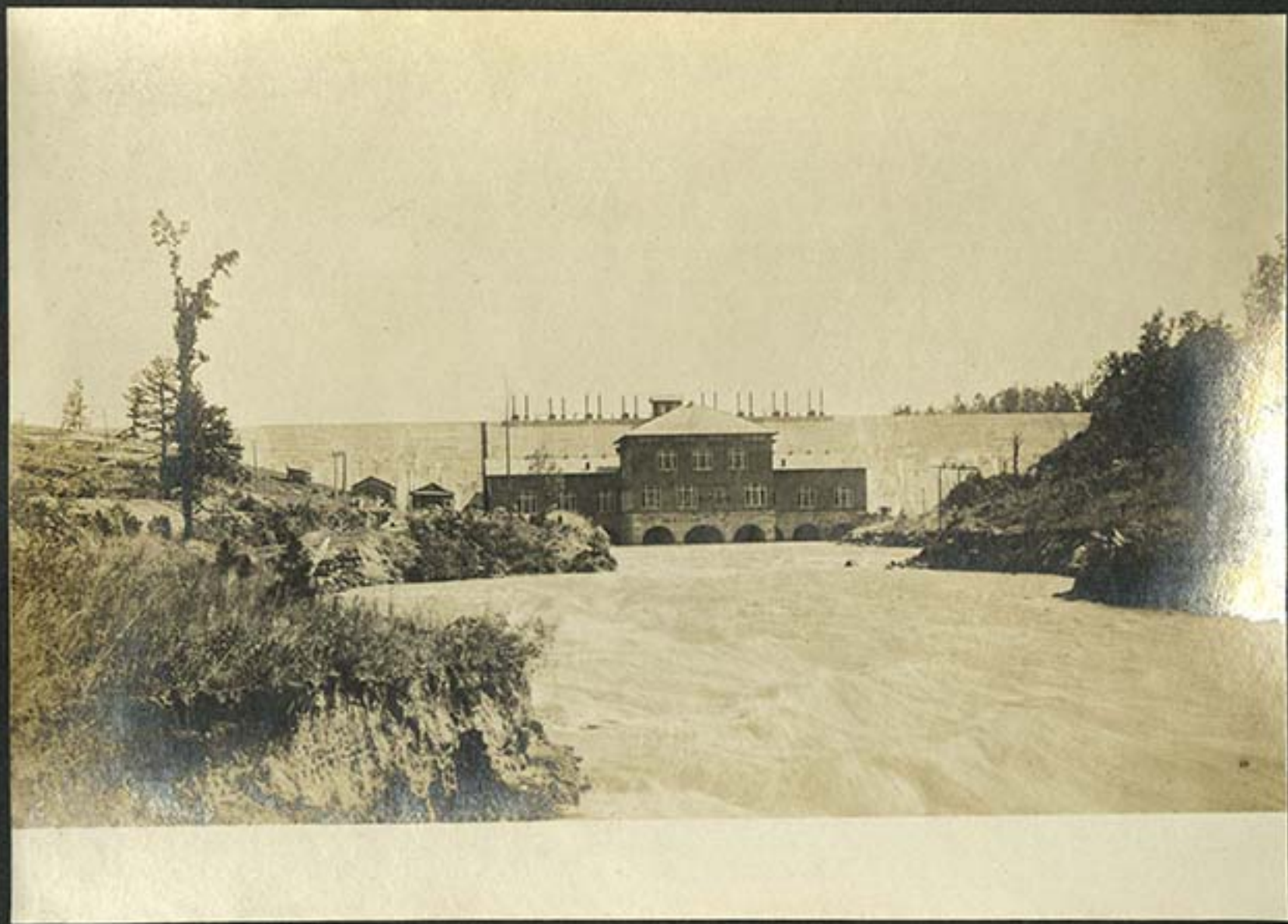
152
30
1922





M. Carlisle

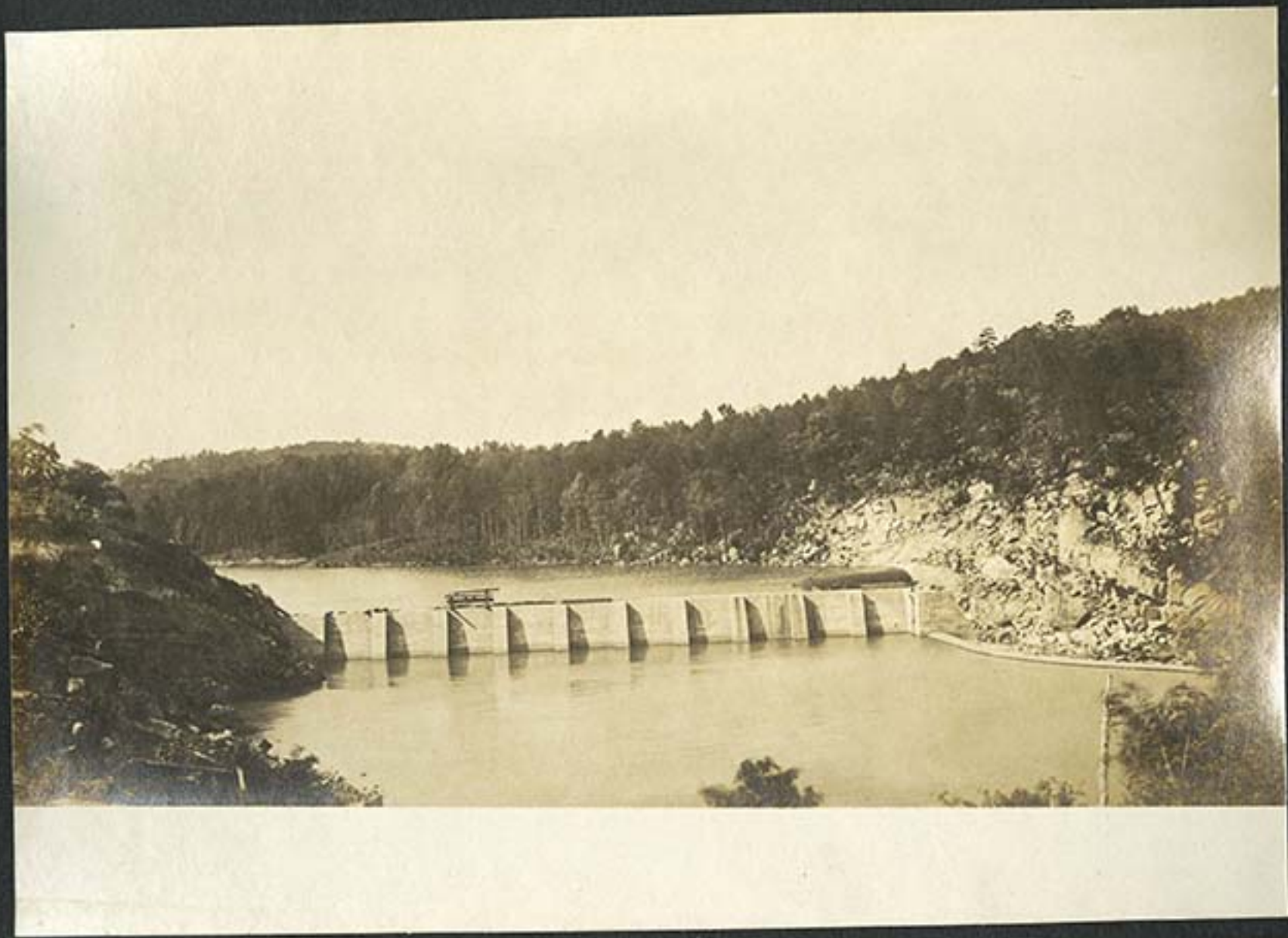


























Two Magnolia Trees United Bigalosa La

516

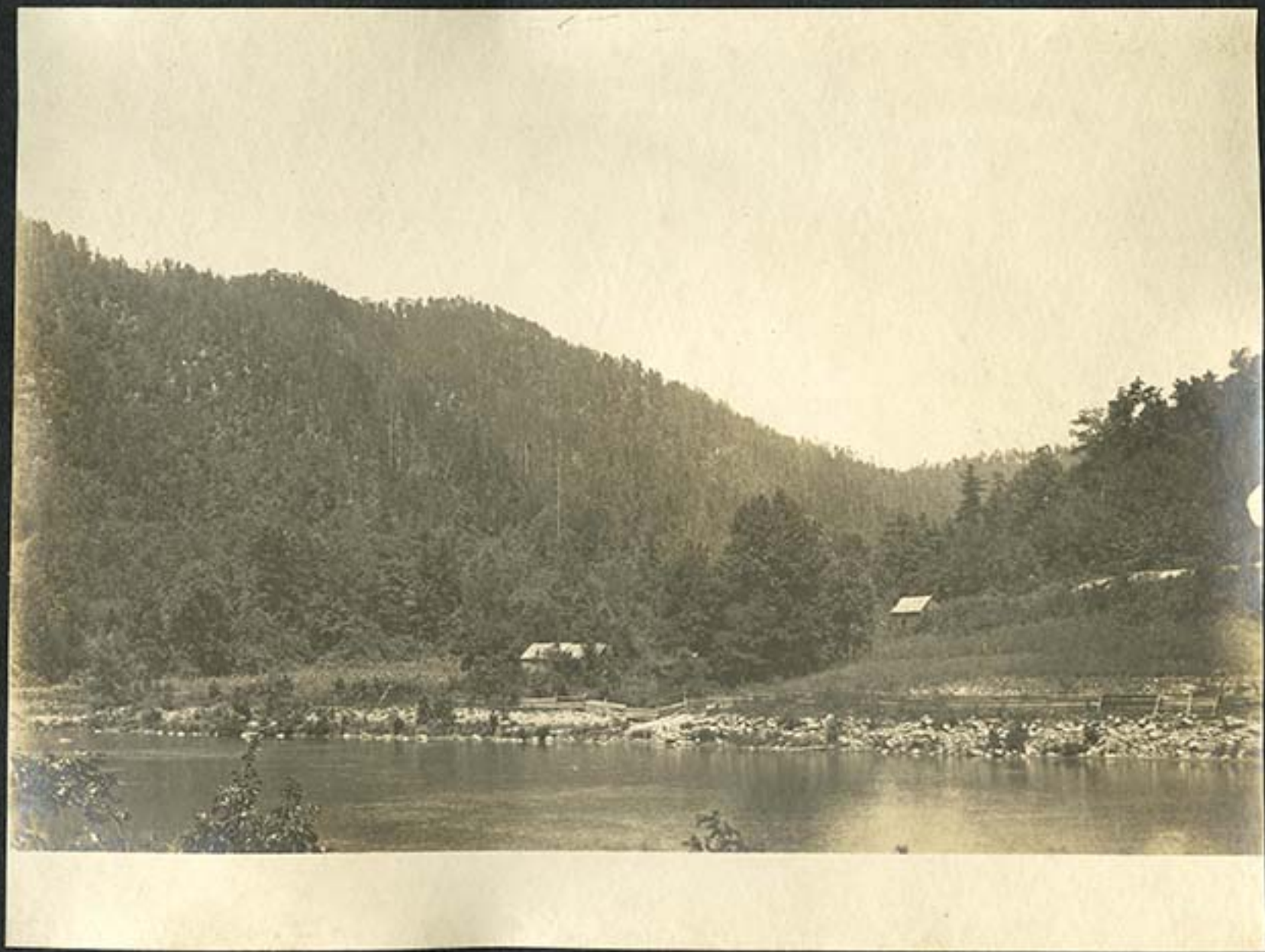


Two Magnolia Trees United Bogalusa, La.

52











King's Mtn.
about 1909



FIRST MARKET DAY - MAY 1915



ON THE WOOLWORTH LOT, MAY 1915.

M. Carlisle
LOCK HILL, D.C.

"FORDS" AND MOLES COOPERATED THAT DAY



M. Carlisle
RICK HILL, S.C.



W. Carlisle
Rock Hill, S.C.



Confederate
Park.
Partially
filled lake
in foreground



Confederate
Park swim-
ming pool -

Sarah Workman
in white skirt
Alberta Thomas
2nd from left
in white dress -
2nd boy from left
Hampton Talley





same scene
different season

E. Main St.
looking west
from Reid St







St. John's
Methodist
Church, Main
St, corner of
Caldwell &
U. S. Post Office
(later RHPF)
on opposite
corner

C27



new St John's
Methodist
Church,
Oakland Ave



White suit
3rd from left
Charlie Ballard
(?)





60-22



Nov. 20, 1924. 4. 40 P.M.





Nov. 26. 1924. 4.40. P.M.



Jornade

Nov. 29. 1924. 4.40 P.M.







