



Modern endoscopic imaging in diagnosis and surveillance of inflammatory bowel disease patients

Hundorfean, Gheorghe; Pereira, Stephen P.; Karstensen, John G.; Vilmann, Peter; Saftoiu, Adrian

Published in:
Gastroenterology Research and Practice

DOI:
[10.1155/2018/5738068](https://doi.org/10.1155/2018/5738068)

Publication date:
2018

Document version
Publisher's PDF, also known as Version of record

Document license:
[CC BY](#)

Citation for published version (APA):
Hundorfean, G., Pereira, S. P., Karstensen, J. G., Vilmann, P., & Saftoiu, A. (2018). Modern endoscopic imaging in diagnosis and surveillance of inflammatory bowel disease patients. *Gastroenterology Research and Practice*, 2018, [5738068]. <https://doi.org/10.1155/2018/5738068>

Review Article

Modern Endoscopic Imaging in Diagnosis and Surveillance of Inflammatory Bowel Disease Patients

Gheorghe Hundorfean ¹, **Stephen P. Pereira** ², **John G. Karstensen**,³ **Peter Vilmann**,³
and **Adrian Saftoiu**⁴

¹Department of Medicine I, Ludwig Demling Endoscopy Center of Excellence, University of Erlangen-Nuremberg, Erlangen, Germany

²Institute for Liver and Digestive Health, University College London, Royal Free Hospital Campus, London, UK

³Department of Endoscopy, Gastrointestinal Unit, Copenhagen University Herlev Hospital, Herlev, Denmark

⁴Research Center of Gastroenterology and Hepatology, University of Medicine and Pharmacy of Craiova, Craiova, Romania

Correspondence should be addressed to Gheorghe Hundorfean; ghundorfean@gmail.com

Received 22 January 2018; Accepted 24 April 2018; Published 31 May 2018

Academic Editor: Alfred Gangl

Copyright © 2018 Gheorghe Hundorfean et al. This is an open access article distributed under the Creative Commons Attribution License, which permits unrestricted use, distribution, and reproduction in any medium, provided the original work is properly cited.

Endoscopy remains the most important diagnostic and monitoring modality in the management of inflammatory bowel disease. Advances in imaging have progressively added new tools into the armamentarium of endoscopists with the goal of more accurate, sensitive, and accessible visual diagnoses for the benefit of patients with gastrointestinal diseases. Here, we review the relevant literature regarding commonly used endoscopic techniques (dye-based and digital chromoendoscopy, high-definition endoscopy, capsule endoscopy, and endosonography), as well as advanced and experimental technologies (full-spectrum endoscopy, endocytoscopy, autofluorescence, laser endoscopy, and endomicroscopy, including molecular imaging), applicable to inflammatory bowel diseases and emerging for implementation into everyday practice. Additionally, we discuss future directions and techniques as candidates for a superior inflammation imaging in the diagnosis and prediction of therapeutic response.

1. Introduction

Patients with inflammatory bowel disease (IBD), comprising ulcerative colitis (UC), and Crohn's disease (CD) need regular endoscopic evaluation for the assessment and monitoring of the extent and severity of inflammation, therapeutic response, and surveillance for colorectal carcinoma (CRC) [1]. Currently, a multitude of endoscopic imaging techniques fulfil these necessities based on guideline recommendations. In addition to standard techniques like high-definition white light endoscopy (HD-WLE), emerging experimental techniques like confocal laser endomicroscopy (CLE) and multiphoton imaging enrich the endoscopic toolbox providing vivid and high-resolution images in real time. Individual improvements in adenoma detection rates are pivotal for adoption and implementation of new techniques. In this regard, the awareness of interval cancer in IBD [2] must increase the efficiency of surveillance endoscopies in IBD patients and focus on higher proficiency in

learning and implementing novel endoscopic technologies in the clinical routine.

The aim of this review is to highlight the current technologies available for conventional as well as advanced endoscopic imaging, both for assessment of inflammation and for neoplasia detection in IBD.

2. Current Recommendations

Screening colonoscopy and therapeutic polypectomy significantly reduce the risk of colorectal carcinoma [3]. The widest endoscopic management strategy of CRC screening in IBD relied initially on the random biopsy technique published by the American Gastroenterology Association in 2010 [4]. A 2013 European guideline regarding IBD screening and surveillance management recommended targeted biopsies of macroscopically visible lesions and 2–4 random biopsies every 10 cm within the colon [5]. In 2015, an international consensus statement

(SCENIC) recommended chromoendoscopy (CE) as the preferred endoscopic technique for dysplasia detection and surveillance [6] in IBD, which is the current standard. National society guidelines, like those of the British Society for Gastroenterology (BSG, 2010), also advocate dye pan-chromoendoscopy with targeted biopsy as the technique of choice and not virtual CE like NBI. If dye-CE is not available, the BSG suggests the old recommendation of 2–4 biopsies every 10 cm of the colon and rectum [7]. In the present high-definition and targeted technology era, the standard in endoscopic practice in referral centers shifted in the last years towards the virtual/digital chromoendoscopy. In this regard, if a chromoendoscopic evaluation (dye/virtual) with biopsy of the inflamed segments is not possible/not available, a targeted high-definition white light endoscopy is to be evaluated as a superior alternative to the random biopsies. If any of the chromoendoscopic techniques (dye or virtual) or high-definition endoscopy are not available, then the patient should be handled according to the BSG recommendation, as minimum standard. If multiple biopsies have to be avoided because of bleeding complication/anticoagulants and so on, a prodigious standard definition assessment remains as last option (with biopsies from any polypoid structure or suspect surface deformity or inhomogeneity other than classical pseudopolyps) in the case of very high confidence and experience. Alternatively, the patient should be referred to an endoscopic unit with an appropriate chromoendoscopy of HD technology for a second endoscopic evaluation.

3. Commonly Used Endoscopic Imaging Techniques

3.1. High-Definition White Light Endoscopy. High-definition white light endoscopy (HD-WLE, Figures 1(c) and 1(e)–1(g)) was introduced in 1993 and is the current standard in gastrointestinal endoscopic practice that replaced standard-definition video endoscopy (Figures 1(a) and 1(b)). HD-WLE allows a resolution of more than 1 million pixels per image and can be visualized on a HD screen. HD-WLE increases the adenoma detection rate compared to standard definition [8] in the general population.

3.2. Chromoendoscopy (CE). Chromoendoscopy (CE) is the most widespread imaging technique for IBD screening and is anchored in the latest international guideline (SCENIC) [6]. CE in the colon comprises dye-based chromoendoscopy (methylene blue and indigo carmine) and digital chromoendoscopy (optical and virtual CE).

3.2.1. Dye-Based CE. Dye-based CE permits characterization of mucosal lesions by topical stain application. One of the first descriptive methylene blue-aided CE studies was done in ulcerative proctitis in 1979 by Baldi and co-workers [9]. A good correlation of UC inflammation severity in CE with topical methylene blue and indigo carmine compared to conventional histology was shown in 25 UC patients by Ibarra-Palomino et al. [10]. Beyond the standard white light endoscopy (WLE), studies using dye-based CE with

magnification endoscopes (cresyl violet plus zooming) proved a lower clinical and histologic inflammation in UC patients having cryptal openings and a network pattern [11]. The first large study comparing methylene blue-based CE-targeted biopsies versus WLE with random biopsies was published by Kiesslich and co-workers proving a superiority of CE in neoplasia detection [12]—a conclusion later confirmed by other studies using indigo carmine CE [13]. Further prospective studies have underlined the superiority of CE in comparison to standard-definition endoscopy for adenoma detection both in IBD and in the general population [14–16].

3.2.2. Dye-Less Digital Chromoendoscopy. Dye-less digital chromoendoscopy uses artificially staining techniques which add colour by pressing a button and subsequently enhancing the mucosal contrast. This is performed either through optical filters, so-called *optical chromoendoscopy*, like the narrow-band imaging technique (NBI, Olympus, Japan; Figure 1(h)) [17, 18] or by virtual video postprocessing in real time, so-called *virtual chromoendoscopy* (*i-Scan*, PENTAX, and FICE, Fujinon, Japan; Figure 1(d)) [19].

Concerning virtual chromoendoscopy, Hofmann and collaborators compared conventional HD-WLE with *i-Scan* and classical CE (with methylene blue) in neoplasia detection. In this setting, *i-Scan* imaging proved equal to methylene blue-aided CE in identifying neoplastic lesions [20]. Furthermore, neoplasia detection using colonoscopy with *i-Scan* was superior to standard colonoscopy [21]. *i-Scan* imaging in comparison to histology results also provided a more precise assessment of inflammation in IBD patients [22]. This fact allows a targeted bioptic sampling from pathological mucosal areas for disease confirmation by histology. In other publications, the Erlangen group described the utility of virtual chromoendoscopy with *i-Scan* for the real-time diagnosis of both gastric and duodenal CD [23, 24]. Using this technique, irregular thickened folds in the duodenum, reddish areas, and especially CD-typical aphthoid erosions were characterized, which were not evident on conventional HD-WLE imaging [23]. In the stomach, *i-Scan* imaging revealed erythematous CD-associated inflammatory areas and spots as well as aphthoid lesions [24]. These virtual CE findings may facilitate an earlier diagnosis of upper gastrointestinal CD and allow targeted biopsies for histological confirmation [23, 24]. Similar findings have been reported in the colon [25].

A very recent comparative study of Iacucci and co-workers proved that *i-Scan* or HD-WLE is not inferior to dye spraying chromocolonoscopy for detection of colonic neoplastic lesions during surveillance colonoscopy [26].

Regarding optical chromoendoscopy, NBI colonoscopy has been shown to be more precise in diagnosing the degree of inflammation in patients with quiescent UC, when compared with conventional HD-WLE [27]. Furthermore, Kudo and co-workers proved a more precise grading of the inflammatory activity in UC with NBI [27] compared to histopathology (as gold standard). NBI colonoscopy was demonstrated to be a useful tool for the *in vivo* detection of angiogenesis in IBD, with a significant increase in vessel density in inflamed areas, which were NBI-positive

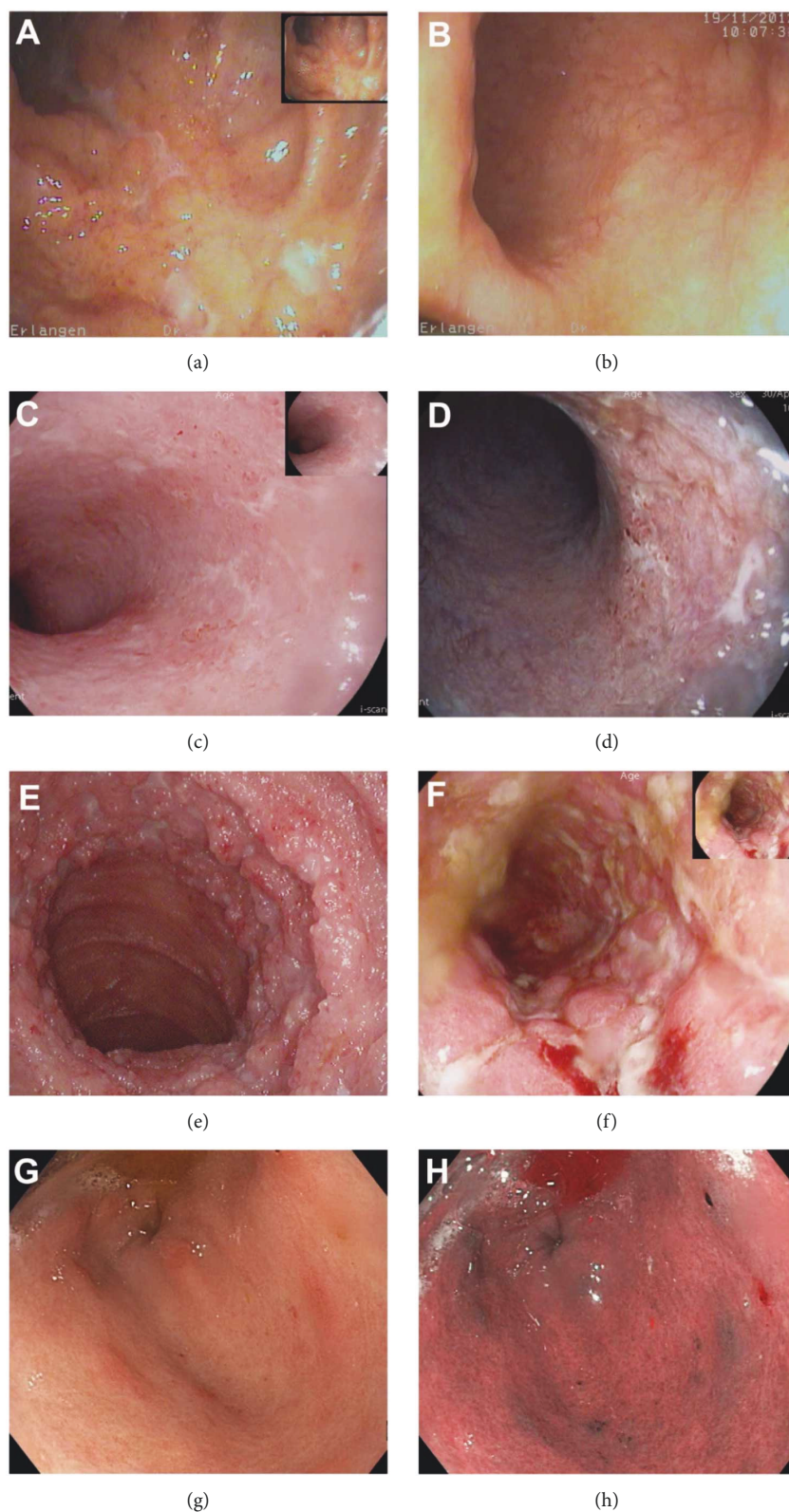


FIGURE 1: Endoscopic images depicting Crohn's disease (CD) and ulcerative colitis (UC) lesions with different techniques and resolutions: image (a) shows a moderate to severe Crohn's colitis, while (b) shows a mild UC (endoscopic Mayo 1), both in standard definition. Images (c) and (d) depict again a distal UC involvement in high-definition white light (HD-WLE) as well as in digital chromoendoscopy using *i*-Scan (Mayo 1-2). In comparison, pictures (e) and (f) show a severe CD of the ileum and colon (high-definition WLE and *i*-Scan). Images (g) and (h) show high-definition WLE and narrow-band imaging (NBI) (h) of a gastric CD, highlighting erosions and aphthoid lesions.

[28]. In one case report, NBI colonoscopy was used to detect a DALM (dysplasia-associated lesion or mass) in a UC patient [29]. In a first prospective study where NBI colonoscopy was compared with conventional colonoscopy for the detection of dysplasia in patients with long-standing UC, the sensitivity of the (first generation) NBI system for neoplasia detection was similar to conventional colonoscopy, although more suspicious lesions were found during NBI [30]. Matsumoto and co-workers went further and demonstrated the value of magnification imaging with NBI for neoplasia prediction in UC [31]. Another study showed that NBI required less biopsy sampling and a shorter withdrawal time in comparison to WLE in neoplasia detection in UC patients [32]. In contrast, a recent study showed that NBI did not improve the detection of neoplasia in patients with UC compared to HD-WLE. Therefore, NBI proved unsatisfactory for differentiating neoplastic from nonneoplastic mucosa [33]. In a crossover study of 29 patients with IBD, Sussman and co-workers compared WLE, dye-based CE (indigo carmine), and NBI [34]. Hereby, WLE and CE accuracy showed superiority over NBI (64% and 63% versus 42%, resp.) in inflammation and pseudopolyp histology prediction.

A recent noninferiority crossover trial utilized WLE, dye-based CE (methylene blue), and *i*-Scan imaging during surveillance colonoscopy [35]. In this paper, Iacucci and co-workers showed a benefit of applying CE imaging in the detection and characterization of sessile serrated adenomas in IBD surveillance colonoscopies (93% sensitivity and specificity).

In a randomized trial comparing CE versus NBI, there was no significant difference in the detection of colitis-associated neoplasia, although the total procedural time was on average 7 min shorter in the NBI group [36].

Data regarding virtual CE with FICE (Fujinon intelligent chromoendoscopy) technology in IBD are currently lacking.

3.2.3. Limitations. Although CE is easily applicable and ready available (push of a button on the endoscopic tip or topical dye application), there are still technologic differences in the equipment standards between endoscopy centers, especially because of high acquisition cost for HD/HD+ devices. Another limitation is the lack of standardized training, as well as a lack of standardized diagnostic and staging scores applicable to the different techniques.

3.3. Endoscopic Ultrasound. Although endoscopic ultrasound (EUS) has an established role in conventional gastrointestinal imaging, in IBD it is not widely used. EUS is capable of providing parietal (intramural) as well as transmural and extraluminal imaging, as additional data to conventional transabdominal ultrasound. During the diagnosis and staging of IBD, characterization of the intestinal layers may be important in uncertain cases to differentiate between UC and CD. Rectal ultrasound is sometimes useful for assessment of IBD severity and for perianal fistula and abscess characterization, utilizing rigid rectal ultrasound probes [37]. Modern echo-endoscopes permit deeper EUS data acquisition beyond the sigmoid colon to assess mucosal and submucosal as well as total wall thickness and locoregional

lymph nodes. In a blinded study of 52 patients, EUS was able to differentiate UC from CD and wall thickness correlated well with activity and histology [38]. When mucosal-submucosal and total wall thickness and lymph node detection were combined, the sensitivity was 92.3% for the differentiation of active UC/CD. Further, there was a strong correlation of total wall thickness with histological inflammation scores.

3.3.1. Limitations. EUS defines more precisely transmural pathology and is not applicable in UC. Although it has high sensitivity, EUS is rarely used in routine IBD diagnostics.

3.4. Capsule Endoscopy. For diagnosing indeterminate IBD cases, for description of location and extent of inflammation in CD, and finally for therapeutic monitoring, capsule endoscopy has proved feasible and informative, especially in cases where bidirectional conventional endoscopy and enteroscopy were inconclusive or not (easily) applicable (like in paediatric adverse events [39]). Before capsule usage, radiologic exclusion of a significant bowel stenosis is mandatory (risk of hang-up and subsequent need for surgery). The first capsule endoscopy experience in IBD was published in 2004 [40]. In a large single-center study [41], capsule endoscopy findings led to changes in the management of the majority of IBD patients. Hereby, capsule endoscopy findings in 128 investigations over 6 years consisted of aphthae/ulcers (22.1%), stenosis (8.1%), and stenosis with capsule retention (17.4%). 61.6% of CD patients had a subsequent change in medication within 3 months after capsule endoscopy, as 39.5% initiated new IBD medication. Following capsule endoscopy, 12.8% of CD patients needed surgery within 3 months. Severe findings on capsule endoscopy in CD patients, as compared to no/minimal findings, resulted in significant differences in medication changes (73.2% versus 51.1%, $P = 0.04$), addition of medications (58.5% versus 22.2%, $P < 0.01$), and surgeries (21.9% versus 4.4%, $P = 0.01$) [41]. Multiple comparative studies proved the diagnostic yield superiority of 83–100% [42–44] for capsule endoscopy related to computer and magnetic resonance tomography, push enteroscopy, and even ileocolonoscopy [45].

3.4.1. Limitations. The limitation of capsule endoscopy rely in its usefulness strictly in isolated cases of uncertain IBD and small bowel CD without ileus or radiologically evidenced stenosis/strictures or intestinal passage disruptions.

4. Advanced Endoscopic Imaging Techniques

4.1. Full-Spectrum Endoscopy (FUSE®). Full-spectrum endoscopy (FUSE) is a new high-definition endoscope that incorporates supplementary lateral camera lenses (to the right and left sides of the colonoscope tip) in addition to the standard forward-viewing camera. These 3 lenses deliver a 330° panoramic field of view of the mucosa as opposed to the 170° field of view from a conventional forward-viewing colonoscope. One study demonstrated an improved visualization of the side walls, blind spots, and behind folds. The FUSE system provided a significantly decreased adenoma

miss rate from 41% using forward-viewing colonoscopes (20 adenomas missed a total of 49) to 7% using FUSE (5 adenomas missed of a total of 67) in a tandem back-to-back colonoscopy study of a non-IBD population [46]. In a recent prospective study of IBD patients, panoramic imaging obtained by FUSE increased the number of dysplastic lesions detected, compared with conventional forward-viewing colonoscopy. Hereby, forward-viewing colonoscopy missed 71.4% of dysplastic lesions per lesion whereas FUSE missed 25.0% per lesion [47]. Still, further multicenter studies are necessary to confirm these data.

4.2. Endocytoscopy. Endocytoscopy (Olympus, Japan) is based on the optical principle of contact light microscopy, delivering *in vivo* real-time ultra-magnifying microscopic imaging of the mucosal surface at a magnification up to 1390-fold [48, 49]. Regarding the diagnostic yield of endocytoscopy in UC, Bessho et al. [50] showed in a cohort of 55 UC patients a correlation of $\rho = 0.713$ ($P < 0.001$) between endoscopy and histopathological activity and a κ value of 0.79 in the validation of the proposed endocytoscopy system score (ECSS) [50]. Another study regarding the value of endocytoscopy for describing inflammatory activity in IBD showed a precise discrimination of single mucosal inflammatory cells and also the degree of inflammation [51]. The sensitivities and specificities for cytologic detection were neutrophilic (60% and 95%), basophilic (74.43% and 94.44%), and eosinophilic granulocytes (75% and 90.48%) and lymphocytes (88.89% and 93.33%), while interobserver and intraobserver agreements were 0.61–0.78 and 0.76–0.88, respectively. Concordance between EC and histopathology for grading of the intestinal disease activity was 100% [51].

Further prospective studies are needed to extend the diagnostic possibilities of this method.

4.3. Fluorescence and Autofluorescence Endoscopy. Both fluorescence and autofluorescence endoscopy are emerging imaging techniques that rely on visualization of fluorescence light (wavelength: 500–630 nm) emitted by either administered or endogenous fluorophores. In a prospective study of 43 patients with UC, the yield of autofluorescence imaging was superior to WLE in inflammation detection (85% versus 79%) [52]. Fluorescence endoscopy with 5-aminolevulinic acid (5-ALA) in comparison with WLE showed no significant difference in the dysplasia detection rate in IBD [53]. Finally, a crossover trimodal study comparing autofluorescence imaging with NBI and WLE showed a superiority of autofluorescence in neoplasia detection in UC [54]. Autofluorescence endoscopic studies on IBD and publications are rare, which still leave broad possibilities for further research endeavours.

4.4. Confocal Laser Endomicroscopy in IBD

4.4.1. CLE for Assessment and Characterization of Inflammation and Mucosal Healing Prediction. Confocal laser endomicroscopy (CLE) is a sophisticated endoscopic imaging technique introduced in 2004 that allows a so-called optical biopsy. Two CLE systems are available, the

integrated endoscopic system (eCLE, from PENTAX, Tokyo, Japan; Figures 2(a) and 2(b)) and the probe-based system (pCLE, from Mauna Kea Technologies, Paris, France; Figures 2(c) and 2(d)), the latter being passable through the working channel of standard endoscopes. By enabling real-time *in vivo* visualization of a plethora of novel cellular and subcellular details, which correlates with conventional histology, CLE has the potential to have a major impact on endoscopic diagnosis [49, 55, 56]. Due to its resolution and tissue penetration of approximately 250 μm , endomicroscopy can describe several aspects of mucosal architecture like crypt alteration (form, density, integrity, crypt lumen distortion, crypt leakage, and goblet cell density within the crypts) as well as microvascular changes (increased vascularity, vascular integrity, and leakage). Based on these two important criteria, Li and co-workers described the first CLE classification of inflammation activity for UC [57]. Prior to this publication, in 2008, Watanabe and co-workers described the microscale mucosal changes provided by CLE between inflamed and noninflamed colon in UC [58].

The Erlangen group provided the endomicroscopic inflammation criteria for a Crohn's colitis activity score [59]. Furthermore, the gastric and duodenal manifestations of CD were described and diagnosed *in vivo*, based on high-definition and virtual chromoendoscopy-guided endomicroscopy (eCLE) [24, 60, 61]. The same group provided *in vivo* differentiation criteria between CD and UC using CLE [62]. In a prospective study, Kiesslich and co-workers [63] published data on the utility of eCLE in predicting an IBD relapse, by describing the process of cell shedding and quantifying the local epithelia barrier dysfunction. In IBD patients in clinical remission, the increase in cell shedding with fluorescein leakage was associated with subsequent relapse within 12 months [63]. Further recent advances in IBD diagnosis and outcome assessment have addressed the capacity of eCLE to evaluate and define more precisely the process of mucosal healing during standard therapy (anti-TNF antibodies) [64]. The Erlangen group prospectively validated the first CLE mucosal healing score for colonic Crohn's colitis and UC, with high sensitivity and specificity values compared with histology (Gupta Index). This score, designed for everyday use in clinical practice, used eCLE to predict mucosal healing and therapeutic outcome over a period of 3 years in UC [64]. IBD patients showing an eMHs score < 1 had a long-lasting clinical remission and reduced hospitalization, steroid, and surgery need, which qualifies the endomicroscopic mucosal healing score and the CLE implicitly as a valuable tool for prediction of a deep lasting remission [64].

Another prospective study of CLE focused on developing an intestinal permeability score in patients with IBD. An impaired intestinal permeability correlated with ongoing bowel symptoms, while an increase in permeability correlated with increased severity of diarrhea [65].

The value of CLE in IBD has been recently addressed in two Danish studies. Karstensen et al. showed that eCLE can predict a relapse in quiescent CD by highlighting fluorescence leakage and microerosions as risk factors for an

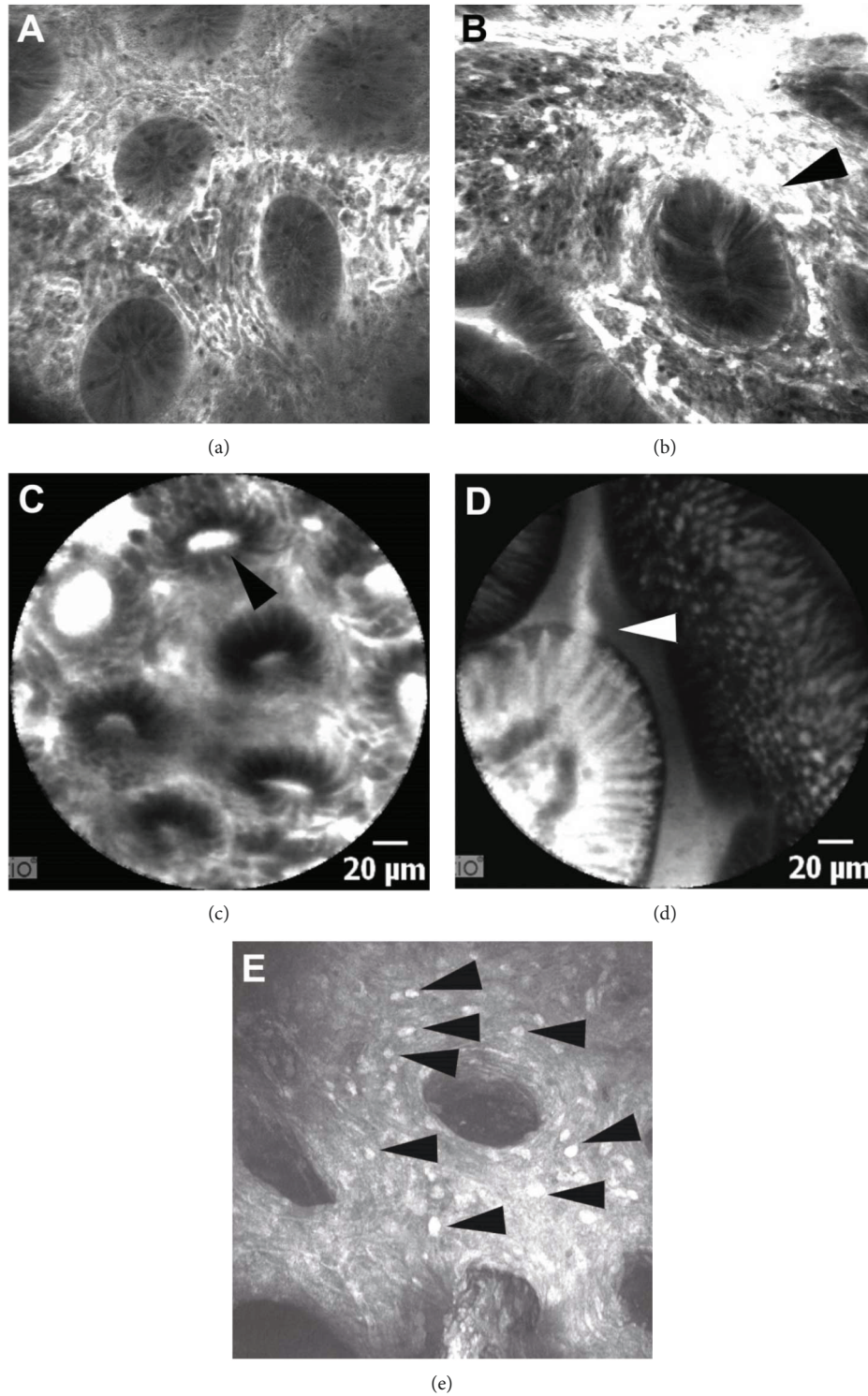


FIGURE 2: Endomicroscopic imaging in Crohn's disease and ulcerative colitis. Images (a) and (b) show endomicroscopic images provided by the integrated system (eCLE) with typical inflamed crypts and hypervascularization in Crohn's colitis (a) and ulcerative colitis (b); arrowhead points towards vascular leakage. Pictograms (c) and (d) show endomicroscopic images provided by the probe-based system (pCLE) in a Crohn's disease patient with colonic and ileal involvement (arrowhead in (c) shows a deformed crypt with lumen leakage; arrowhead in (d) shows a typical epithelial gap). (e) shows a premier molecular endomicroscopic imaging of golimumab FITC (ex vivo eCLE) in an ulcerative colitis patient that underwent proctocolectomy (arrowhead shows golimumab FITC-positive cells in the lamina propria, suggesting the high number and density of effector cells of inflammation).

inflammatory fallback in 50 IBD patients ($P=0.043$ and $P=0.034$, respectively; inter- and intraobserver reproducibility $\kappa > 0.80$ and $\kappa > 0.60$, meaning a good agreement) [66]. The same group described pCLE to assess the longitudinal histologic changes upon various immunosuppressive therapies in UC patients [67]. Prediction of UC relapse by pCLE, based on crypt structural and microvascular criteria, was confirmed by an Italian group [68].

4.4.2. CLE in Neoplasia Detection and Surveillance in IBD. Regarding the value of CLE for detection of dysplasia-associated lesions or mass (DALM) or adenoma-like mass (ALM) in UC patients, Hurlstone and co-workers obtained high accuracy values, for example, the agreement between CLE and histopathologic evaluation was $\kappa=0.91$, and accuracy was 97% [69]. Indigo carmine-aided pCLE accurately detected dysplasia in long-standing UC [70]. This study emphasized the advantages of combining imaging techniques to improve diagnostic accuracy. By using bimodal imaging, Kiesslich and co-workers showed that targeted eCLE using chromoendoscopy guidance (with methylene blue) had a significantly higher diagnostic yield (4.75-fold) for neoplasia detection in UC patients, than conventional colonoscopy with random biopsies [71]. The same work showed that this dual imaging technique reduced the need for biopsies by 50 percent. On the same issue of targeted versus random biopsies for neoplasia detection in IBD, Günther et al. [72] compared random biopsy during WLE with CE (indigo carmine and quadrantic biopsies) and eCLE (with targeted versus random biopsies). CE- and eCLE-guided targeted biopsies were more accurate in neoplasia detection in UC than random biopsies during WLE.

A similar randomized trial with methylene blue CE-guided eCLE versus WLE with random biopsies in neoplasia detection in 162 UC patients with high neoplastic risk (as IN, intraepithelial neoplasia history, or PSC) revealed no significant difference in the detection for IN (8 versus 7 patients) [73], although the targeted approach did reduce biopsy sampling, in line with Kiesslich et al.'s study [71].

Comparative studies between colonoscopy with NBI and pCLE regarding detection yield for IN have also been addressed [74]. In one study, NBI was superior to pCLE in neoplastic discrimination of sessile and pedunculated polyps in UC (sensitivity, specificity, and accuracy of 100%, 89%, and 92% versus 65%, 82%, and 81%, resp.), although different approaches were applied (blind pCLE versus real-time NBI assessment), making objective comparisons difficult.

CD surveillance studies are rarer compared to UC trials. A recent prospective study from 2016 showed a limited practical applicability for neoplasia detection in CD by CE-guided eCLE [75]. CE-guided eCLE presented a low dysplasia detection rate of IN (9.8%). The combination of CE and eCLE for differentiating neoplastic from nonneoplastic lesions had an accuracy of 86.7%, sensitivity of 42.9%, and specificity of 92.4%. For CE alone, this was 80.3% (95% CI, 70.7–89.9), 28.6% (95% CI, 5.1–69.7), and 86.4% (95% CI, 80.9–97.6).

There are only a few studies addressing molecular imaging in IBD using the CLE technique (Figure 2(e)). In a

prospective study of 25 patients with CD, the Erlangen group described the feasibility of topically administered fluorescein isothiocyanate- (FITC-) conjugated adalimumab to detect intestinal membrane-bound tumour necrosis factor- (mTNF-) positive immune cells. Patients with high numbers of mTNF(+) cells had significantly higher short-term response rates to anti-TNF therapy, which was sustained over a 1-year follow-up period [76].

Although the CLE enthusiasm of the pioneering years decreased, confocal technology remains a promising tool for real-time cellular diagnosis, mucosal healing prediction [64], and molecular imaging, but reforms regarding reimbursements as well as lower acquisition cost have to promote a broader implementation of CLE from study settings into real-life daily routine.

4.4.3. CLE Limitations. Despite the potential of this technique, CLE has limitations including costs issues (inadequate reimbursement in Europe, expensive acquisition) and limited accessibility since it is available only in large, mostly academic endoscopy centers. One of the apparent limitations of the eCLE both in multicenter studies [75] and single-center experience [50] were dysfunctions of the laser unit (of the eCLE system). Another limitation in most CLE studies, with pCLE and eCLE, is an unavoidable bias in the collection of CLE data, influenced by the surface pattern seen on conventional endoscopy. This limitation is unavoidable, and a blinded CLE sampling is impossible because the CLE technique in itself represents a point technique that needs direct and targeted contact with the mucosal area of interest. Here, the CLE sampling has to be done in areas of the colorectum with representative findings (e.g., inflammation), since a complete CLE investigation of the entire colon and rectum is impossible. In this regard, the general limitation of sampling error has to be underlined, since the technique allows only the analysis of a very small mucosal area compared to the real surface extent of diseases like IBD. Further, CLE imaging as supplementary acquisition method requires extra time, which logically extends the entire investigation time and needs higher sedation need.

5. Conclusions and Perspectives

An increased number of diagnostic and surveillance imaging novelties like multiband confocal imaging or multimodal studies that combine more than two advanced endoscopic imaging techniques will most probably bring in the future new insights for better diagnosis and management of the two IBD entities, CD and UC. Before more widespread adoption of these techniques, specific limitations of the describe techniques must also be addressed, including limited availability because of high acquisition costs and insufficient reimbursement, lack of standardized training and diagnostic scores, and the additional time necessary for investigation. Better reimbursement rates are needed in order to translate techniques like CLE from the experimental levels into the wide daily practice.

In the near future, techniques like the dual-band or multiband endomicroscopy will enrich the endoscopic

armamentarium, allowing the usage of 2 fluorophores and more complex molecular imaging. Further, technical developments with slimmer and more flexible endoscopes, as well as improvements in digital optics like three-dimensional endoscopy and ultra-high-definition imaging (UHD/4K), are expected to enter into endoscopic production.

In conclusion, a targeted approach combining several imaging technologies in IBD diagnosis brings advantages regarding accuracy and reduces the necessity of classical forceps biopsy, as well as overall risks, which should encourage the adoption, implementation, and standardization of these modern techniques into clinical practice.

Conflicts of Interest

The authors Gheorghe Hundorfean, Stephen P. Pereira, John G. Karstensen, Peter Vilmann, and Adrian Saftoiu declare that there is no conflict of interest regarding the publication of this paper.

References

- [1] L. Beaugerie, M. Svrcek, P. Seksik et al., "Risk of colorectal high-grade dysplasia and cancer in a prospective observational cohort of patients with inflammatory bowel disease," *Gastroenterology*, vol. 145, no. 1, pp. 166–175.e8, 2013.
- [2] S. Sanduleanu and M. D. Rutter, "Interval colorectal cancers in inflammatory bowel disease: the grim statistics and true stories," *Gastrointestinal Endoscopy Clinics of North America*, vol. 24, no. 3, pp. 337–348, 2014.
- [3] A. G. Zauber, S. J. Winawer, M. J. O'Brien et al., "Colonoscopic polypectomy and long-term prevention of colorectal-cancer deaths," *The New England Journal of Medicine*, vol. 366, no. 8, pp. 687–696, 2012.
- [4] F. A. Farraye, R. D. Odze, J. Eaden et al., "AGA medical position statement on the diagnosis and management of colorectal neoplasia in inflammatory bowel disease," *Gastroenterology*, vol. 138, no. 2, pp. 738–745, 2010.
- [5] V. Annese, M. Daperno, M. D. Rutter et al., "European evidence based consensus for endoscopy in inflammatory bowel disease," *Journal of Crohn's & Colitis*, vol. 7, no. 12, pp. 982–1018, 2013.
- [6] L. Laine, T. Kaltenbach, A. Barkun et al., "SCENIC international consensus statement on surveillance and management of dysplasia in inflammatory bowel disease," *Gastrointestinal Endoscopy*, vol. 81, no. 3, pp. 489–501.e26, 2015.
- [7] S. R. Cairns, J. H. Scholefield, R. J. Steele et al., "Guidelines for colorectal cancer screening and surveillance in moderate and high risk groups (update from 2002)," *Gut*, vol. 59, no. 5, pp. 666–689, 2010.
- [8] A. M. Buchner, M. W. Shahid, M. G. Heckman et al., "High-definition colonoscopy detects colorectal polyps at a higher rate than standard white-light colonoscopy," *Clinical Gastroenterology and Hepatology*, vol. 8, no. 4, pp. 364–370, 2010.
- [9] F. Baldi, G. di Febo, G. Biasco et al., "Methylene blue dye spraying method in patients with ulcerative proctitis: a comparative study with morphological findings and functional capacity of the rectal epithelium," *Endoscopy*, vol. 11, no. 3, pp. 179–184, 1979.
- [10] J. Ibarra-Palomino, R. Barreto-Zuniga, J. Elizondo-Rivera, J. Bobadilla-Diaz, and A. Villegas-Jimenez, "Application of chromoendoscopy to evaluate the severity and interobserver variation in chronic non-specific ulcerative colitis," *Revista de Gastroenterología de México*, vol. 67, no. 4, pp. 236–240, 2002.
- [11] T. Matsumoto, F. Kuroki, M. Mizuno, S. Nakamura, and M. Iida, "Application of magnifying chromoscopy for the assessment of severity in patients with mild to moderate ulcerative colitis," *Gastrointestinal Endoscopy*, vol. 46, no. 5, pp. 400–405, 1997.
- [12] R. Kiesslich, J. Fritsch, M. Holtmann et al., "Methylene blue-aided chromoendoscopy for the detection of intraepithelial neoplasia and colon cancer in ulcerative colitis," *Gastroenterology*, vol. 124, no. 4, pp. 880–888, 2003.
- [13] M. D. Rutter, B. P. Saunders, G. Schofield, A. Forbes, A. B. Price, and I. C. Talbot, "Pancolonic indigo carmine dye spraying for the detection of dysplasia in ulcerative colitis," *Gut*, vol. 53, no. 2, pp. 256–260, 2004.
- [14] M. G. Lapalus, T. Helbert, B. Napoleon et al., "Does chromoendoscopy with structure enhancement improve the colonoscopic adenoma detection rate?," *Endoscopy*, vol. 38, no. 5, pp. 444–448, 2006.
- [15] B. J. Rembacken, T. Fujii, A. Cairns et al., "Flat and depressed colonic neoplasms: a prospective study of 1000 colonoscopies in the UK," *The Lancet*, vol. 355, no. 9211, pp. 1211–1214, 2000.
- [16] J. F. Marion, J. D. Waye, D. H. Present et al., "Chromoendoscopy-targeted biopsies are superior to standard colonoscopic surveillance for detecting dysplasia in inflammatory bowel disease patients: a prospective endoscopic trial," *The American Journal of Gastroenterology*, vol. 103, no. 9, pp. 2342–2349, 2008.
- [17] S. Sikka, D. A. Ringold, S. Jonnalagadda, and B. Banerjee, "Comparison of white light and narrow band high definition images in predicting colon polyp histology, using standard colonoscopes without optical magnification," *Endoscopy*, vol. 40, no. 10, pp. 818–822, 2008.
- [18] Y. Sano, H. Ikematsu, K. I. Fu et al., "Meshed capillary vessels by use of narrow-band imaging for differential diagnosis of small colorectal polyps," *Gastrointestinal Endoscopy*, vol. 69, no. 2, pp. 278–283, 2009.
- [19] S. Kodashima and M. Fujishiro, "Novel image-enhanced endoscopy with i-scan technology," *World Journal of Gastroenterology*, vol. 16, no. 9, pp. 1043–1049, 2010.
- [20] A. Hoffman, C. Kagel, M. Goetz et al., "Recognition and characterization of small colonic neoplasia with high-definition colonoscopy using i-Scan is as precise as chromoendoscopy," *Digestive and Liver Disease*, vol. 42, no. 1, pp. 45–50, 2010.
- [21] A. Hoffman, F. Sar, M. Goetz et al., "High definition colonoscopy combined with i-Scan is superior in the detection of colorectal neoplasias compared with standard video colonoscopy: a prospective randomized controlled trial," *Endoscopy*, vol. 42, no. 10, pp. 827–833, 2010.
- [22] H. Neumann, M. Vieth, M. Grauer et al., "Mo1542 virtual chromoendoscopy with I-Scan enables more precise diagnosis of mucosal inflammation in patients with inflammatory bowel disease," *Gastrointestinal Endoscopy*, vol. 73, no. 4, article AB381, 2011.
- [23] G. Hundorfean, A. Agaimy, M. T. Chiriach, M. F. Neurath, and J. Mudter, "High-definition endoscopic imaging with i-Scan for the detection and characterization of duodenal Crohn's disease," *Journal of Crohn's and Colitis*, vol. 7, no. 3, pp. e122–e123, 2013.

- [24] G. Hunderfean, A. Agaimy, A. Hartmann et al., "In vivo diagnosis and characterization of gastric Crohn's disease using endomicroscopy and virtual chromoendoscopy," *Endoscopy*, vol. 44, Supplement 2, pp. E263–E264, 2012.
- [25] H. Neumann, M. Vieth, C. Günther et al., "Virtual chromoendoscopy for prediction of severity and disease extent in patients with inflammatory bowel disease: a randomized controlled study," *Inflammatory Bowel Diseases*, vol. 19, no. 9, pp. 1–42, 2013.
- [26] M. Iacucci, G. G. Kaplan, R. Panaccione et al., "A randomized trial comparing high definition colonoscopy alone with high definition dye spraying and electronic virtual chromoendoscopy for detection of colonic neoplastic lesions during IBD surveillance colonoscopy," *The American Journal of Gastroenterology*, vol. 113, no. 2, pp. 225–234, 2018.
- [27] T. Kudo, T. Matsumoto, M. Esaki, T. Yao, and M. Iida, "Mucosal vascular pattern in ulcerative colitis: observations using narrow band imaging colonoscopy with special reference to histologic inflammation," *International Journal of Colorectal Disease*, vol. 24, no. 5, pp. 495–501, 2009.
- [28] S. Danese, G. Fiorino, E. Angelucci et al., "Narrow-band imaging endoscopy to assess mucosal angiogenesis in inflammatory bowel disease: a pilot study," *World Journal of Gastroenterology*, vol. 16, no. 19, pp. 2396–2400, 2010.
- [29] J. E. East, N. Suzuki, A. von Herbay, and B. P. Saunders, "Narrow band imaging with magnification for dysplasia detection and pit pattern assessment in ulcerative colitis surveillance: a case with multiple dysplasia associated lesions or masses," *Gut*, vol. 55, no. 10, pp. 1432–1435, 2006.
- [30] E. Dekker, F. J. van den Broek, J. B. Reitsma et al., "Narrow-band imaging compared with conventional colonoscopy for the detection of dysplasia in patients with longstanding ulcerative colitis," *Endoscopy*, vol. 39, no. 3, pp. 216–221, 2007.
- [31] T. Matsumoto, T. Kudo, Y. Jo, M. Esaki, T. Yao, and M. Iida, "Magnifying colonoscopy with narrow band imaging system for the diagnosis of dysplasia in ulcerative colitis: a pilot study," *Gastrointestinal Endoscopy*, vol. 66, no. 5, pp. 957–965, 2007.
- [32] L. Leifeld, G. Rogler, A. Stallmach et al., "White-light or narrow-band imaging colonoscopy in surveillance of ulcerative colitis: a prospective multicenter study," *Clinical Gastroenterology and Hepatology*, vol. 13, no. 10, pp. 1776–1781.e1, 2015.
- [33] F. J. C. van den Broek, P. Fockens, S. van Eeden et al., "Narrow-band imaging versus high-definition endoscopy for the diagnosis of neoplasia in ulcerative colitis," *Endoscopy*, vol. 43, no. 2, pp. 108–115, 2011.
- [34] D. A. Sussman, J. A. Barkin, A. M. Martin et al., "Development of advanced imaging criteria for the endoscopic identification of inflammatory polyps," *Clinical and Translational Gastroenterology*, vol. 6, no. 11, article e128, 2015.
- [35] M. Iacucci, C. Hassan, M. F. Gasia et al., "Serrated adenoma prevalence in inflammatory bowel disease surveillance colonoscopy, and characteristics revealed by chromoendoscopy and virtual chromoendoscopy," *Canadian Journal of Gastroenterology and Hepatology*, vol. 28, no. 11, 594 pages, 2014.
- [36] R. Bisschops, T. Bessissow, J. A. Joseph et al., "Chromoendoscopy versus narrow band imaging in UC: a prospective randomised controlled trial," *Gut*, vol. 67, no. 6, pp. 1087–1094, 2018.
- [37] G. Maconi, S. Ardizzone, S. Greco, E. Radice, C. Bezzio, and G. Bianchi Porro, "Transperineal ultrasound in the detection of perianal and rectovaginal fistulae in Crohn's disease," *The American Journal of Gastroenterology*, vol. 102, no. 10, pp. 2214–2219, 2007.
- [38] M. Ellrichmann, P. Wietzke-Braun, S. Dhar et al., "Endoscopic ultrasound of the colon for the differentiation of Crohn's disease and ulcerative colitis in comparison with healthy controls," *Alimentary Pharmacology & Therapeutics*, vol. 39, no. 8, pp. 823–833, 2014.
- [39] S. W. de Melo Jr and J. A. di Palma, "The role of capsule endoscopy in evaluating inflammatory bowel disease," *Gastroenterology Clinics of North America*, vol. 41, no. 2, pp. 315–323, 2012.
- [40] W. S. Mow, S. K. Lo, S. R. Targan et al., "Initial experience with wireless capsule enteroscopy in the diagnosis and management of inflammatory bowel disease," *Clinical Gastroenterology and Hepatology*, vol. 2, no. 1, pp. 31–40, 2004.
- [41] M. D. Long, E. Barnes, K. Isaacs, D. Morgan, and H. H. Herfarth, "Impact of capsule endoscopy on management of inflammatory bowel disease: a single tertiary care center experience," *Inflammatory Bowel Diseases*, vol. 17, no. 9, pp. 1855–1862, 2011.
- [42] J. G. Albert, F. Martiny, A. Krummenerl et al., "Diagnosis of small bowel Crohn's disease: a prospective comparison of capsule endoscopy with magnetic resonance imaging and fluoroscopic enteroclysis," *Gut*, vol. 54, no. 12, pp. 1721–1727, 2005.
- [43] C. A. Solem, E. V. Loftus Jr., J. G. Fletcher et al., "Small-bowel imaging in Crohn's disease: a prospective, blinded, 4-way comparison trial," *Gastrointestinal Endoscopy*, vol. 68, no. 2, pp. 255–266, 2008.
- [44] P. M. Dionisio, S. R. Gurudu, J. A. Leighton et al., "Capsule endoscopy has a significantly higher diagnostic yield in patients with suspected and established small-bowel Crohn's disease: a meta-analysis," *The American Journal of Gastroenterology*, vol. 105, no. 6, pp. 1240–1248, 2010.
- [45] D. Hudesman, J. Mazurek, and A. Swaminath, "Capsule endoscopy in Crohn's disease: are we seeing any better?," *World Journal of Gastroenterology*, vol. 20, no. 36, pp. 13044–13051, 2014.
- [46] I. M. Gralnek, P. D. Siersema, Z. Halpern et al., "Standard forward-viewing colonoscopy versus full-spectrum endoscopy: an international, multicentre, randomised, tandem colonoscopy trial," *The Lancet Oncology*, vol. 15, no. 3, pp. 353–360, 2014.
- [47] R. W. Leong, M. Ooi, C. Corte et al., "Full-spectrum endoscopy improves surveillance for dysplasia in patients with inflammatory bowel diseases," *Gastroenterology*, vol. 152, no. 6, pp. 1337–1344.e3, 2017.
- [48] ASGE Technology Committee, R. S. Kwon, L. M. Wong Kee Song et al., "Endocytoscopy," *Gastrointestinal Endoscopy*, vol. 70, no. 4, pp. 610–613, 2009.
- [49] H. Inoue, S. E. Kudo, and A. Shiokawa, "Technology insight: laser-scanning confocal microscopy and endocytoscopy for cellular observation of the gastrointestinal tract," *Nature Clinical Practice Gastroenterology & Hepatology*, vol. 2, no. 1, pp. 31–37, 2005.
- [50] R. Bessho, T. Kanai, N. Hosoe et al., "Correlation between endocytoscopy and conventional histopathology in microstructural features of ulcerative colitis," *Journal of Gastroenterology*, vol. 46, no. 10, pp. 1197–1202, 2011.

- [51] H. Neumann, M. Vieth, M. F. Neurath, and R. Atreya, "Endocytoscopy allows accurate in vivo differentiation of mucosal inflammatory cells in IBD: a pilot study," *Inflammatory Bowel Diseases*, vol. 19, no. 2, pp. 356–362, 2013.
- [52] K. Moriichi, M. Fujiya, M. Ijiri et al., "Quantification of autofluorescence imaging can accurately and objectively assess the severity of ulcerative colitis," *International Journal of Colorectal Disease*, vol. 30, no. 12, pp. 1639–1643, 2015.
- [53] T. Ochsenkühn, C. Tillack, H. Stepp et al., "Low frequency of colorectal dysplasia in patients with long-standing inflammatory bowel disease colitis: detection by fluorescence endoscopy," *Endoscopy*, vol. 38, no. 5, pp. 477–482, 2006.
- [54] F. J. C. van den Broek, P. Fockens, S. van Eeden et al., "Endoscopic tri-modal imaging for surveillance in ulcerative colitis: randomised comparison of high-resolution endoscopy and autofluorescence imaging for neoplasia detection; and evaluation of narrow-band imaging for classification of lesions," *Gut*, vol. 57, no. 8, pp. 1083–1089, 2008.
- [55] H. Neumann, R. Kiesslich, M. B. Wallace, and M. F. Neurath, "Confocal laser endomicroscopy: technical advances and clinical applications," *Gastroenterology*, vol. 139, no. 2, pp. 388–392.e2, 2010.
- [56] ASGE Technology Committee, S. V. Kantsevoy, D. G. Adler et al., "Confocal laser endomicroscopy," *Gastrointestinal Endoscopy*, vol. 70, no. 2, pp. 197–200, 2009.
- [57] C. Q. Li, X. J. Xie, T. Yu et al., "Classification of inflammation activity in ulcerative colitis by confocal laser endomicroscopy," *The American Journal of Gastroenterology*, vol. 105, no. 6, pp. 1391–1396, 2010.
- [58] O. Watanabe, T. Ando, O. Maeda et al., "Confocal endomicroscopy in patients with ulcerative colitis," *Journal of Gastroenterology and Hepatology*, vol. 23, Supplement 2, pp. S286–S290, 2008.
- [59] H. Neumann, M. Vieth, R. Atreya et al., "Assessment of Crohn's disease activity by confocal laser endomicroscopy," *Inflammatory Bowel Disease*, vol. 18, no. 12, pp. 2261–2269, 2012.
- [60] G. Hundorfean, A. Agaimy, R. Atreya, J. Mudter, M. F. Neurath, and H. Neumann, "Confocal laser endomicroscopy for characterization of Crohn's disease-associated duodenitis," *Endoscopy*, vol. 44, article E80, Supplement 2, 2012.
- [61] G. Hundorfean, A. Agaimy, M. T. Chiriac et al., "In vivo detection of mucosal healing-involved histiocytes by confocal laser endomicroscopy," *World Journal of Gastroenterology*, vol. 18, no. 32, pp. 4447–4449, 2012.
- [62] G. Hundorfean, M. T. Chiriac, J. Mudter, and M. F. Neurath, "Confocal laser endomicroscopy provides potential differentiation criteria between Crohn's disease and ulcerative colitis," *Inflammatory Bowel Diseases*, vol. 19, no. 4, pp. E61–E64, 2013.
- [63] R. Kiesslich, C. A. Duckworth, D. Moussata et al., "Local barrier dysfunction identified by confocal laser endomicroscopy predicts relapse in inflammatory bowel disease," *Gut*, vol. 61, no. 8, pp. 1146–1153, 2012.
- [64] G. Hundorfean, M. T. Chiriac, S. Mihai, A. Hartmann, J. Mudter, and M. F. Neurath, "Development and validation of a confocal laser endomicroscopy-based score for in vivo assessment of mucosal healing in ulcerative colitis patients," *Inflammatory Bowel Diseases*, vol. 24, no. 1, pp. 35–44, 2017.
- [65] J. Chang, R. W. Leong, V. C. Wasinger, M. Ip, M. Yang, and T. G. Phan, "Impaired intestinal permeability contributes to ongoing bowel symptoms in patients with inflammatory bowel disease and mucosal healing," *Gastroenterology*, vol. 153, no. 3, pp. 723–731.e1, 2017.
- [66] J. G. Karstensen, A. Săftoiu, J. Brynskov et al., "Confocal laser endomicroscopy: a novel method for prediction of relapse in Crohn's disease," *Endoscopy*, vol. 48, no. 4, pp. 364–372, 2016.
- [67] J. G. Karstensen, A. Săftoiu, J. Brynskov et al., "Confocal laser endomicroscopy in ulcerative colitis: a longitudinal study of endomicroscopic changes and response to medical therapy (with videos)," *Gastrointestinal Endoscopy*, vol. 84, no. 2, pp. 279–286.e1, 2016.
- [68] A. Buda, G. Hatem, H. Neumann et al., "Confocal laser endomicroscopy for prediction of disease relapse in ulcerative colitis: a pilot study," *Journal of Crohn's & Colitis*, vol. 8, no. 4, pp. 304–311, 2014.
- [69] D. P. Hurlstone, M. Thomson, S. Brown, N. Tiffin, S. S. Cross, and M. D. Hunter, "Confocal endomicroscopy in ulcerative colitis: differentiating dysplasia-associated lesion mass and adenoma-like mass," *Clinical Gastroenterology and Hepatology*, vol. 5, no. 10, pp. 1235–1241, 2007.
- [70] A. Rispo, F. Castiglione, S. Staibano et al., "Diagnostic accuracy of confocal laser endomicroscopy in diagnosing dysplasia in patients affected by long-standing ulcerative colitis," *World Journal of Gastrointestinal Endoscopy*, vol. 4, no. 9, pp. 414–420, 2012.
- [71] R. Kiesslich, M. Goetz, K. Lammersdorf et al., "Chromoscopy-guided endomicroscopy increases the diagnostic yield of intraepithelial neoplasia in ulcerative colitis," *Gastroenterology*, vol. 132, no. 3, pp. 874–882, 2007.
- [72] U. Günther, D. Kusch, F. Heller et al., "Surveillance colonoscopy in patients with inflammatory bowel disease: comparison of random biopsy vs. targeted biopsy protocols," *International Journal of Colorectal Disease*, vol. 26, no. 5, pp. 667–672, 2011.
- [73] P. Freire, P. Figueiredo, R. Cardoso et al., "Surveillance in ulcerative colitis: is chromoendoscopy-guided endomicroscopy always better than conventional colonoscopy? A randomized trial," *Inflammatory Bowel Diseases*, vol. 20, no. 11, pp. 2038–2045, 2014.
- [74] F. J. van den Broek, J. A. van Es, S. van Eeden et al., "Pilot study of probe-based confocal laser endomicroscopy during colonoscopic surveillance of patients with longstanding ulcerative colitis," *Endoscopy*, vol. 43, no. 2, pp. 116–122, 2011.
- [75] L. K. Wanders, T. Kuiper, R. Kiesslich et al., "Limited applicability of chromoendoscopy-guided confocal laser endomicroscopy as daily-practice surveillance strategy in Crohn's disease," *Gastrointestinal Endoscopy*, vol. 83, no. 5, pp. 966–971, 2016.
- [76] R. Atreya, H. Neumann, C. Neufert et al., "In vivo molecular imaging using fluorescent anti-TNF antibodies and confocal laser endomicroscopy predicts response to anti-TNF therapy in Crohn's disease," *Gastroenterology*, vol. 144, no. 5, pp. S-85–S-86, 2013.



Hindawi

Submit your manuscripts at
www.hindawi.com

