



Time since start of first-line therapy as a predictive clinical marker for nintedanib in patients with previously treated non-small cell lung cancer

Gaschler-Markefski, Birgit; Sikken, Patricia; Heymach, John V; Gottfried, Maya; Mellempgaard, Anders; Novello, Silvia; Gann, Claudia-Nanette; Barrueco, José; Reck, Martin; Hanna, Nasser H; Kaiser, Rolf

Published in:
E S M O Open

DOI:
[10.1136/esmoopen-2016-000102](https://doi.org/10.1136/esmoopen-2016-000102)

Publication date:
2017

Document version
Publisher's PDF, also known as Version of record

Document license:
[CC BY-NC](https://creativecommons.org/licenses/by-nc/4.0/)

Citation for published version (APA):
Gaschler-Markefski, B., Sikken, P., Heymach, J. V., Gottfried, M., Mellempgaard, A., Novello, S., ... Kaiser, R. (2017). Time since start of first-line therapy as a predictive clinical marker for nintedanib in patients with previously treated non-small cell lung cancer. *E S M O Open*, 2(1), [e000102].
<https://doi.org/10.1136/esmoopen-2016-000102>



CrossMark

Time since start of first-line therapy as a predictive clinical marker for nintedanib in patients with previously treated non-small cell lung cancer

Birgit Gaschler-Markefski,¹ Patricia Sikken,¹ John V Heymach,² Maya Gottfried,³ Anders Mellemegaard,⁴ Silvia Novello,⁵ Claudia-Nanette Gann,⁶ José Barrueco,⁷ Martin Reck,⁸ Nasser H Hanna,⁹ Rolf Kaiser^{1,10}

► Additional material is published online only. To view please visit the journal online (<http://dx.doi.org/10.1136/esmoopen-2016-000102>).

To cite: Gaschler-Markefski B, Sikken P, Heymach JV, *et al*. Time since start of first-line therapy as a predictive clinical marker for nintedanib in patients with previously treated non-small cell lung cancer. *ESMO Open* 2017;**2**:e000102. doi:10.1136/esmoopen-2016-000102

Received 8 September 2016
Revised 9 November 2016
Accepted 22 November 2016

For numbered affiliations see end of article.

Correspondence to

Dr Birgit Gaschler-Markefski, Boehringer Ingelheim Pharma GmbH & Co. KG, Birkendorfer Str. 65, Biberach an der Riss 88397, Germany; birgit.gaschler-markefski@boehringer-ingelheim.com

ABSTRACT

Introduction No predictive clinical or genetic markers have been identified or validated for antiangiogenic agents in lung cancer. We aimed to identify a predictive clinical marker of benefit for nintedanib, an angiokinase inhibitor, using data from two large second-line non-small cell lung cancer Phase III trials (LUME-Lung 1 ([LL1] and LUME-Lung 2).

Methods Predictive marker identification was conducted in a multi-step process using data from both trials; a hypothesis was generated, confirmed and validated. Statistical analyses included a stepwise selection approach, a recursive partitioning method and the evaluation of HRs, including treatment-by-covariate interactions. The marker was finally validated using a prospectively defined hierarchical testing procedure and treatment-by-covariate interaction for overall survival (OS) based on LL1.

Results Time since start of first-line therapy (TSFLT) was identified as the only predictive clinical marker. A cut-off of 9 months was chosen for further analysis, based on HRs and recursive partitioning. The prospectively defined final validation using OS data from LL1 established the strong relationship between TSFLT and treatment with nintedanib. Patients with adenocarcinoma with TSFLT <9 months showed a greater survival benefit (median OS 10.9 vs 7.9 months, HR 0.75 [95% CI 0.60–0.92]; $p=0.0073$) compared with patients in the TSFLT >9 months group (median OS 17.0 vs 15.1 months, HR 0.89 [95% CI 0.66–1.19]).

Conclusions Patients with shorter TSFLT derive a greater progression-free survival and OS benefit from nintedanib. This clinical marker could be used for patient selection and further investigation is warranted regarding pathways promoting aggressive tumour growth and antiangiogenic tyrosine kinase inhibitor benefit.

INTRODUCTION

The classification of advanced non-small cell lung cancer (NSCLC) includes the determination of histological and molecular subtypes that influence therapeutic decisions.^{1,2} Histology is recognised as an important factor in treatment selection, as

Key questions

What is already known about this subject?

- The classification of advanced non-small cell lung cancer (NSCLC) includes the determination of histological and molecular subtypes, which influence therapeutic decisions.
- No predictive clinical or molecular markers have been identified or validated for antiangiogenic agents in patients with advanced NSCLC.

What does this study add?

- This is the first study to identify a predictive clinical marker for antiangiogenic therapy in patients with advanced NSCLC.
- Predictive clinical markers of benefit for nintedanib, an angiokinase inhibitor, were evaluated using data from two large second-line NSCLC phase III trials (LUME-Lung 1 and LUME-Lung 2).
- A high threshold for success was set for developing the marker hypothesis, by requiring that any clinical marker should meet the criteria of being both prognostic of outcome in the control arms and predictive of treatment benefit in the investigational arms of the LUME-Lung trials. An additional threshold was that the observation made in one trial had to be validated in an independent trial in patients with the same histology.
- Time since start of first-line therapy (TSFLT) was shown to be the only prognostic and predictive clinical marker for treatment benefit with nintedanib.

How might this impact on clinical practice?

- TSFLT is the first independently validated clinical marker for antiangiogenic treatment in NSCLC, and is predictive and prognostic of treatment success with nintedanib.
- A shorter TSFLT is indicative that more aggressive tumours with a worse prognosis have a greater relative benefit from treatment with nintedanib.
- Further validation and characterisation of this clinical marker in future studies should help to define its potential utility in daily practice, as well as direct the search for a potential genetic marker to a narrower population.



different histologies have distinct patterns of genomic alterations³ and differential responses to treatments.⁴ Combination chemotherapies, including the vascular endothelial growth factor (VEGF) antibody bevacizumab, have shown different overall survival (OS) benefits based on histology.^{5,6} The lack of validated clinical or molecular markers that can predict clinical benefit from VEGF receptor (VEGFR) inhibitors in patients with advanced NSCLC remains a significant unmet need. Identifying clinical markers that are predictive of antiangiogenic treatment effect would be particularly beneficial as it could help to guide future research into novel molecular markers, as well as potential pathways driving therapeutic resistance.

Nintedanib is an oral, triple angiokinase inhibitor of VEGFR1–3, platelet-derived growth factor receptor (PDGFR)- α/β , fibroblast growth factor receptor (FGFR)1–3, RET and Flt3.⁷ Nintedanib combined with docetaxel is approved in the European Union and other countries for the treatment of patients with locally advanced, metastatic or locally recurrent NSCLC of adenocarcinoma tumour histology after first-line chemotherapy, and has been approved as monotherapy for the treatment of patients with idiopathic pulmonary fibrosis. The LUME-Lung 1 study (NCT00805194; 1199.13) assessed nintedanib–docetaxel versus placebo–docetaxel in patients with advanced or recurrent NSCLC who had relapsed or failed one prior line of chemotherapy, and was the first phase III study to show a survival benefit of an add-on treatment versus an active comparator in a broad adenocarcinoma population.⁸ A separate study in patients with NSCLC showed similar findings; ramucirumab, a monoclonal antibody targeting the VEGFR2 receptor, significantly improved OS in patients with primarily non-squamous cell carcinoma when added to docetaxel.⁹ Based on these promising data in molecularly unselected patients, there is a need to identify which patients may benefit most from antiangiogenic treatment.

Indeed, patient selection is particularly relevant with the increasing availability of different treatment options, such as immunotherapies, for patients progressing after first-line therapy. Although pembrolizumab is approved for patients with metastatic NSCLC after first-line therapy in a specific population of patients whose tumours express programmed death-ligand 1 (PD-L1), nivolumab is an available treatment option without a requirement for PD-L1 expression testing. However, PD-L1 expression levels do impact on outcome with nivolumab; the benefits of nivolumab over docetaxel were comparable regardless of PD-L1 expression status in squamous cell histology,¹⁰ whereas the magnitude of benefit appeared greater among patients whose tumours expressed PD-L1 than among those whose tumours did not express PD-L1 in patients with non-squamous histology NSCLC.¹¹ When combined with the observation that patients with non-squamous histology and low tumour PD-L1 expression (<50%) may be at higher risk of death within the first 3 months of treatment with nivolumab,¹² PD-L1

expression levels should be a consideration in the treatment selection for both immunotherapy agents. Given that the majority of patients with NSCLC do not have high levels of PD-L1 expression,¹¹ factors that can be used to guide treatment choice in these patients are particularly welcome.

Against this background and concurrent with LUME-Lung 1, another phase III trial, LUME-Lung 2 (NCT00806819; 1199.14), assessed nintedanib–pemetrexed versus placebo–pemetrexed in patients with advanced or recurrent non-squamous NSCLC who had relapsed or failed one prior line of chemotherapy.¹³ Based on a preplanned futility analysis of investigator-assessed progression-free survival (PFS), the independent Data Monitoring Committee (DMC) recommended that this trial be stopped for futility because achievement of the primary endpoint was deemed to be unlikely.¹³ Follow-up was continued for previously accrued patients, and the DMC recommended exploring whether specific patients might benefit from nintedanib. Despite failing the futility analysis, subsequent analysis of centrally reviewed PFS, the primary study endpoint, demonstrated a statistically significant improvement in the nintedanib–pemetrexed arm (median, 4.4 vs 3.6 months, respectively; HR 0.83 (95% CI 0.70–0.99); $p=0.0435$),¹³ indicating benefit from treatment with nintedanib–pemetrexed.

The objective of this analysis was to identify a predictive clinical marker of nintedanib benefit that could be used by clinicians to select patients most likely to benefit from the addition of nintedanib to docetaxel after first-line chemotherapy. Detailed analysis of the LUME-Lung 2 data was conducted to identify a predictive and prognostic marker for nintedanib benefit, which was validated using data from the LUME-Lung 1 study. Identifying clinical markers that are predictive of antiangiogenic treatment effect would be particularly beneficial as it could help to guide future research into novel molecular markers, as well as potential pathways driving therapeutic resistance.

MATERIALS AND METHODS

Patients

LUME-Lung 1 and 2 were independent phase III trials in patients with stage IIIB/IV or recurrent NSCLC after failure of first-line chemotherapy, and Eastern Cooperative Oncology Group (ECOG) performance status (PS) 0–1^{8,13} (figure 1). Only patients with relapse or failure of one previous first-line chemotherapy regimen were allowed to enter the study (in the case of recurrent disease one additional prior regimen was allowed for adjuvant, neo-adjuvant or neo-adjuvant plus adjuvant therapy). Both trials were approved by local independent ethics committees or institutional review boards at each site, and by all relevant regulatory bodies.

LUME-Lung 1 assessed the efficacy and safety of nintedanib–docetaxel (n=655) versus placebo–docetaxel (n=659) in all histological subtypes of NSCLC,

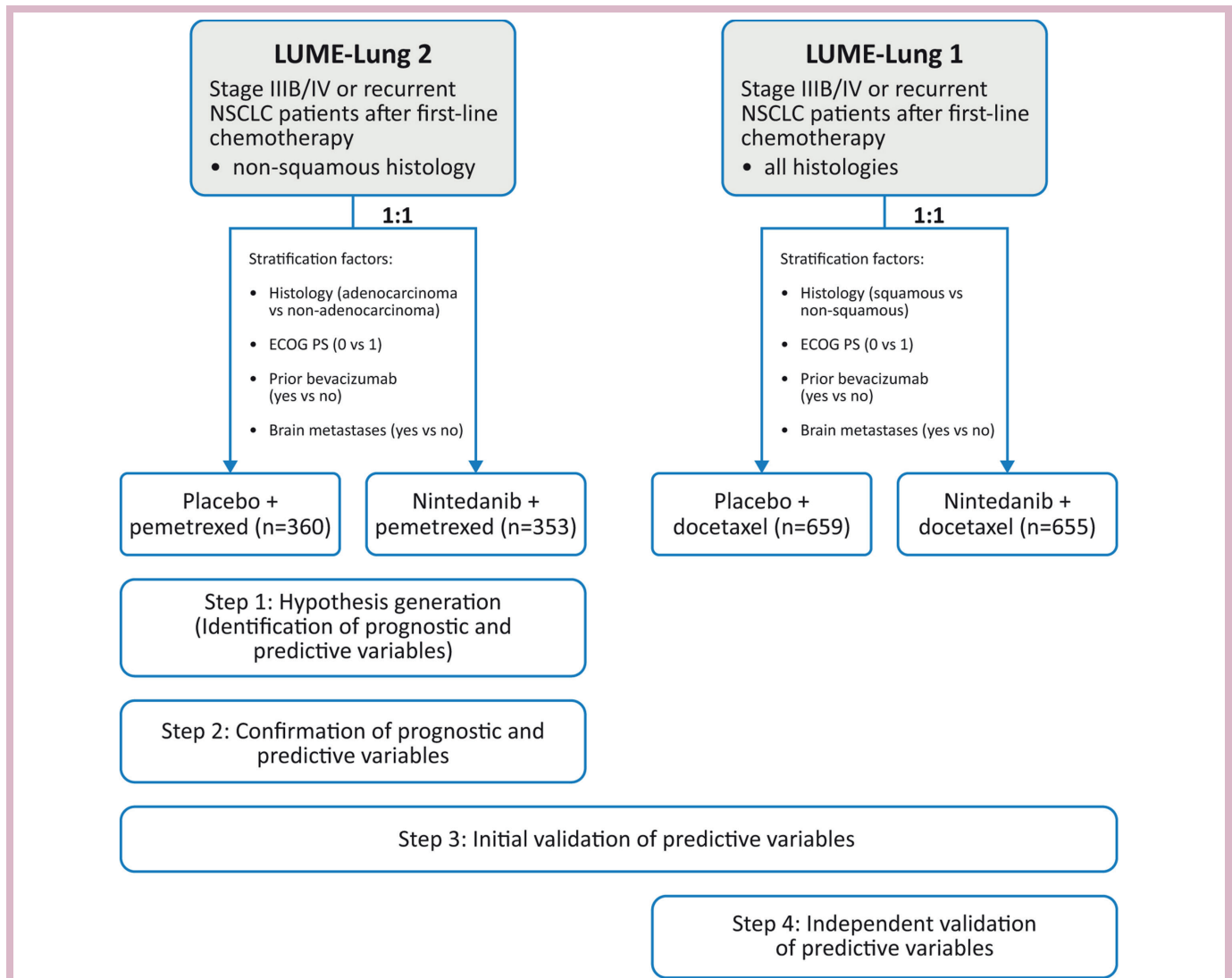


Figure 1 Overview of studies and clinical marker identification process. ECOG PS, Eastern Cooperative Oncology Group performance status; NSCLC, non-small cell lung cancer.

whereas LUME-Lung 2 assessed nintedanib–pemetrexed (500 mg/m²; n=353) versus placebo–pemetrexed (n=360) in patients with non-squamous NSCLC.

In both trials, demographics and baseline characteristics were balanced between treatment groups. Median age was ~60 years and just under one-third of patients were aged ≥65 years old. In LUME-Lung 1, 73% of patients were men, whereas this proportion was slightly lower in LUME-Lung 2 (57%). Median time since diagnosis in both trials was approximately 9 months and the large majority of patients (>97%) had received platinum-based first-line therapy. In LUME-Lung 1, 4% of patients had received first-line bevacizumab; this proportion was somewhat higher in LUME-Lung 2 (8%). Further details about the patient populations in these trials have been reported previously.^{8,13}

In both trials, histology was a stratification factor (determined locally): squamous versus non-squamous in LUME-Lung 1 and adenocarcinoma versus non-adenocarcinoma in LUME-Lung 2. Among the patients with

non-squamous NSCLC, patients with adenocarcinoma represented the majority of the study population (87% in LUME-Lung 1 and 94% in LUME-Lung 2). The primary endpoint in both trials was PFS by central independent review according to modified Response Evaluation Criteria in Solid Tumours version 1.0. OS was the key secondary endpoint. In both trials, patient demographics and oncological history were balanced between the treatment arms for the intention-to-treat populations and for the respective major histologies.

Clinical marker identification

Following the recommendation of the DMC, a systematic analysis of the LUME-Lung 2 trial was predefined and implemented to identify the patient population that gained most benefit from nintedanib treatment. For the clinical marker to be considered valid,^{14,15} and to reduce the likelihood of falsely identifying a subgroup of patients benefiting from nintedanib, it was predefined that the marker was required to be both prognostic and predictive for PFS and



OS, and had to be confirmed with the independent set of LUME-Lung 1 data for PFS and OS.

By first identifying prognostic markers and testing only those for predictivity, the number of potential predictive variables was reduced and the chance of false-positive findings was decreased. A predefined range of patient baseline variables was explored to determine whether they were prognostic (table 1). These variables had been prespecified in the protocol or had been identified as potentially prognostic factors in the literature when the study was stopped because of futility.

Predictive marker identification was conducted in a four-step process, using data from both trials (figure 1). First, a hypothesis was generated by identifying prognostic and predictive variables using data from the LUME-Lung 2 trial. Second, any prognostic and predictive variables identified from hypothesis generation were confirmed using additional data from LUME-Lung 2. Third, initial validation of the variable as predictive of nintedanib benefit was conducted using OS data from LUME-Lung 2 (internal validation) and data from the LUME-Lung 1 trial (external validation). As a final validation step, the prespecified key secondary endpoint of OS in the LUME-Lung 1 study was extended beyond the original specifications of the analysis plan to validate time since first-line therapy as a predictor of treatment benefit.

Because histology is recognised as an important factor in treatment selection for patients with advanced NSCLC, confirmation and validation of the marker was conducted in the non-squamous (LUME-Lung 2 only) and the adenocarcinoma patient populations; these represented the largest populations in both studies. This ensured the comparability of the results and reduced any population bias to a minimum.

STATISTICAL METHODS

Analysis of prognostic variables

Two different statistical methods were used to identify prognostic variables: (1) a stepwise selection approach using Cox proportional hazards modelling and (2) a recursive partitioning tree approach (see online supplementary appendix for further details).¹⁶

Cox proportional hazards modelling included all prespecified baseline variables in a stepwise selection model. The two major stratification factors (based on patient numbers) used in the LUME-Lung trials (ECOG PS [0 vs 1] and tumour histology [adenocarcinoma vs non-adenocarcinoma]) were included in the model as stratification factors. The critical value for inclusion or exclusion of a potentially prognostic variable was the significance level of 0.05.

Prognostic analyses were conducted using PFS data from the control arm of the LUME-Lung 2 study. Investigator-assessed PFS was used during hypothesis generation and centrally assessed PFS data were used during confirmation.

Table 1 Investigated prognostic variables

Baseline characteristic	Randomisation stratification factor	Prespecified in both protocols
Tumour histology (LUME-Lung 1: squamous vs non-squamous; LUME-Lung 2: adenocarcinoma vs non-adenocarcinoma)	✓	✓
Baseline ECOG performance status (0 vs 1)	✓	✓
Prior bevacizumab therapy (yes vs no)	✓	✓
Brain metastases at baseline (yes vs no)	✓	✓
Liver metastases (yes vs no)	✗	✓
Sex (men vs women)	✗	✓
Age (<65 vs ≥65 years)	✗	✓
Best response to first-line chemotherapy (CR/PR/SD vs PD/unknown/NA/missing)	✗	✓
Concomitant bisphosphonates at baseline (yes vs no)	✗	✓
Disease stage at diagnosis (<IIIB/IV vs IIIB vs IV)	✗	✓
Region (LUME-Lung 1: Asia vs rest of world; LUME-Lung 2: Asia vs non-Asia)	✗	✓
Time between start of first-line therapy and randomisation into the trial ('TSFLT') (months)	✗	✓
Adrenal metastases (yes vs no)*	✗	✓
Number of metastatic organs at baseline*	✗	✓
Lactate dehydrogenase level at baseline* (>1 x ULN vs ≤1 x ULN) [†]	✗	✓

*Additionally identified from the literature.

[†]Lactate dehydrogenase (LDH) levels at baseline were transformed into a binary variable (>1 x ULN vs ≤1 x ULN) because the range of LDH values was very limited (5th percentile, 0.5; 95th percentile, 2.0). This categorisation of LDH levels has been used previously.^{47,48}
 ✓=yes; ✗=no; CR, complete response; ECOG, Eastern Cooperative Oncology Group; NA, not available; PD, progressive disease; PR, partial response; SD, stable disease; TSFLT, time since start of first-line therapy; ULN, upper limit of normal.



Analysis of predictive variables

To investigate whether prognostic variables were also predictive for the treatment effect, the interaction between these variables and treatment was examined by a stepwise selection approach using Cox proportional hazards modelling with data from LUME-Lung 2.

For the calculation of HRs and 95% CIs, the Cox proportional hazards model was stratified by the LUME-Lung 2 stratification factors: ECOG PS (0 vs 1), tumour histology (adenocarcinoma vs non-adenocarcinoma), brain metastases at baseline (yes vs no) and prior treatment with bevacizumab (yes vs no). Investigator-assessed PFS was used during hypothesis generation and centrally assessed PFS data were used during confirmation. Formal interaction tests were used for categorical covariates; treatment-by-covariate interaction was evaluated at a significance level of 0.2.

Hazard ratio-by-treatment interaction plots

Assessment of treatment interaction for continuous variables was evaluated by calculating HRs for various covariate levels, which were depicted visually by HR-by-treatment interaction plots.^{17 18} No formal interaction tests were performed; the covariate values below which the HR point estimate was <1 and for which the width of the 95% CI was small were considered to define a subgroup of patients with greater treatment benefit.

HR-by-treatment interaction plots were used throughout the analyses and in the validation of the interaction between treatment effect and continuous variables, using the OS data from LUME-Lung 2 (internal validation) and OS data from LUME-Lung 1 (external validation).

FINAL VALIDATION

The final analysis of the key secondary endpoint OS of the LUME-Lung 1 trial was planned to be extended to validate this potential clinical marker by prospectively introducing hierarchical testing as follows⁸: (1) patients as defined by the predictive marker within the identified tumour histology groups (non-squamous or adenocarcinoma), (2) patients with the identified tumour histology groups (non-squamous or adenocarcinoma) and (3) the entire study population. In order to define clearly the beneficial group of patients for the first step of this testing procedure, any predictive continuous marker would require dichotomisation by an appropriate cut-point. With this hierarchy, each of the three hypotheses could be tested at the prespecified significance level only if the previous null hypothesis in the testing sequence had been rejected (and after a statistically significant result for the primary endpoint PFS in the primary and follow-up PFS analyses for LUME-Lung 1 had been achieved). The overall alpha level for OS followed a Lan–DeMets spending function with an O’Brien–Fleming shape parameter¹⁹ to preserve an overall two-sided alpha level of 0.05. The significance level for each step of this final OS analysis was 0.04984, and depended on the number of deaths that had accrued

at the time of the interim OS analysis (n=423 OS events) and the number of deaths that had accrued by the time of the final OS analysis (n=1121 OS events).

In order to validate the predictivity of the clinical marker, the treatment interaction should be confirmed — for binary variables, by repeating the interaction test; and for continuous variables, by evaluating the HR–interaction plot. In addition, the estimated OS treatment benefit from the first hierarchical testing step should be greater compared with the OS treatment benefit of the second testing step and of the last testing step.

RESULTS

Hypothesis generation based on LUME-Lung 2

Stepwise selection analyses of the placebo arm of the LUME-Lung 2 study identified TSFLT (defined as time between start of first-line therapy and randomisation into the trial; HR 0.96 [95% CI 0.94–0.98; p=0.0001]), male sex (HR 1.33 [95% CI 0.94–1.87; p=0.1045]), lower baseline lactate dehydrogenase (LDH) levels (HR 1.34 [95% CI 1.07–1.66; p=0.009]) and having never smoked (HR 1.59 [95% CI 1.10–2.30; p=0.0135]) as potentially prognostic for longer PFS.

Recursive partitioning also identified TSFLT as potentially prognostic, with an optimal binary split for TSFLT of 7.8 months (see online supplementary figure 1A).

The HR-by-treatment interaction plot of TSFLT based on investigator-assessed PFS showed that patient benefit from nintedanib treatment was higher with shorter TSFLT. The upper limit of the 95% CI approached a HR of 1.0 at TSFLT values between 8 and 9 months. A cut-off of 9 months (ie, TSFLT <9 months vs TSFLT ≥9 months) was chosen for further exploratory analysis, as the 95% CIs were narrowest around this point and similar to the cut-off identified by recursive partitioning.

Further analysis revealed that TSFLT was the only predictive marker for the treatment effect of nintedanib in combination with pemetrexed. The HR for patients with TSFLT <9 months was 0.76 (95% CI 0.58–0.98). Owing to the high frequency of patients with adenocarcinoma in the LUME-Lung 2 study, this finding was mainly driven by these patients (HR 0.96 [95% CI 0.78–1.17], nintedanib–pemetrexed vs placebo–pemetrexed).

Confirmation of the predictive marker

Stepwise selection analysis of centrally assessed PFS in the LUME-Lung 2 placebo arm identified TSFLT (HR 0.95 [95% CI 0.93–0.98; p<0.0001]), baseline LDH levels (HR 1.52 [95% CI 1.23–1.89; p=0.0001]), region (Asian vs non-Asian) (HR 1.53 ([95% CI 1.12–2.10; p=0.0073]) and presence/absence of liver metastases (HR 1.42 [95% CI 0.97–2.08; p=0.0676]) as potentially prognostic variables. Recursive partitioning analysis of centrally assessed PFS in the LUME-Lung 2 placebo arm confirmed TSFLT as a prognostic variable, with an optimal binary split point of 8.2 months (see online supplementary figure 1B).

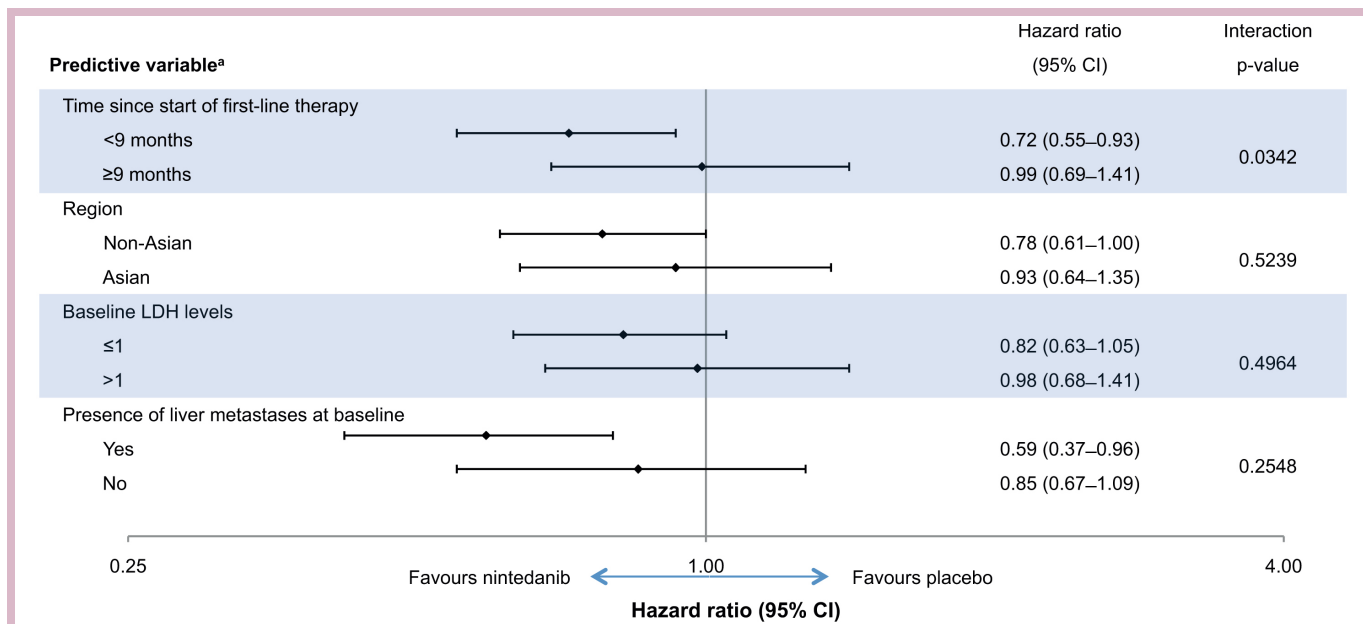


Figure 2 Clinical marker confirmation using centrally assessed progression-free survival data in patients with advanced non-small cell lung cancer with non-squamous histology treated in LUME-Lung 2. Treatment-by-covariate interaction tests for HRs using data from patients treated with nintedanib–pemetrexed. LDH, lactate dehydrogenase. ^aHRs and CIs obtained from a model stratified by Eastern Cooperative Oncology Group performance status (0 vs ≥1), brain metastases at baseline (yes vs no), prior treatment with bevacizumab (yes vs no) and tumour histology (adenocarcinoma vs non-adenocarcinoma).

Further analysis showed that TSFLT was also the only predictive variable of nintedanib benefit; the p values of the treatment-by-covariate interaction tests for other variables were all above 0.2 (figure 2).

The HR–treatment interaction plot confirmed the relationship between HR and TSFLT, with the upper limit of the 95% CI approaching a HR of 1.0 at TSFLT values between 8 and 9 months. This finding was confirmed in analysis of patients with adenocarcinoma tumour histology (figure 3A), and Kaplan–Meier curves demonstrated a significant treatment benefit (figure 4A).

Initial validation of the predictive marker

The interaction between treatment effect and TSFLT was validated using the OS data from LUME-Lung 2: the shorter the TSFLT, the better the treatment effect, as indicated by a decreasing HR with shorter TSFLT in patients with either non-squamous or adenocarcinoma histology tumours. In both patients with non-squamous histology with TSFLT <9 months and patients with adenocarcinoma histology with TSFLT <9 months, the HR for OS was 0.84 (95% CI 0.62–1.14).

The HR-by-treatment interaction plots based on centrally assessed PFS and the interim OS for the patients with non-squamous cell carcinoma in LUME-Lung 1 validated the relationship between TSFLT and HR observed in the LUME-Lung 2 data. The same relationship between TSFLT and HR was observed in patients with adenocarcinoma for centrally assessed PFS (figure 3B) and the interim OS.

For patients with adenocarcinoma histology and TSFLT <9 months, the HR for centrally assessed PFS

was 0.63 (95% CI 0.48–0.83) (figure 4B) and the HR for interim OS was 0.79 (95% CI 0.55–1.14). PFS benefit was also observed in patients with TSFLT <6 months (see online supplementary figure 2A). Of note, in the patients with squamous cell carcinoma, no relationship between this marker and either PFS or OS treatment effects was observed.

Final validation

The first testing step for the final OS data from LUME-Lung 1 established that patients with adenocarcinoma with TSFLT <9 months showed a greater survival benefit. In these patients, nintedanib–docetaxel significantly prolonged median OS by 3 months compared with placebo–docetaxel, and reduced the risk of death by 25% (figure 4C) (median final OS 10.9 months [95% CI 8.5–12.6] vs 7.9 months [95% CI 6.7–9.1], HR 0.75 [95% CI 0.60–0.92]; p=0.0073). In the group with TSFLT ≥9 months, the HR for OS was 0.89 (95% CI 0.66–1.19; p=0.4239, median OS 17.0 vs 15.1 months).

The assessment of OS HRs for various levels of TSFLT in the LUME-Lung 1 study shows that patients with adenocarcinoma with the shortest TSFLT derived significant treatment benefit for OS when treated with nintedanib–docetaxel (figure 3C). More importantly, however, this confirmed that the overall population of patients with adenocarcinoma derived a treatment benefit, as the estimated HR stayed below 1, irrespective of the TSFLT. Of note, the upper limit of the 95% CI did cross 1 at around the time of 12 months since start of first-line therapy.

In line with the predictive effect of TSFLT, patients with TSFLT <6 months (median final OS 9.5 months

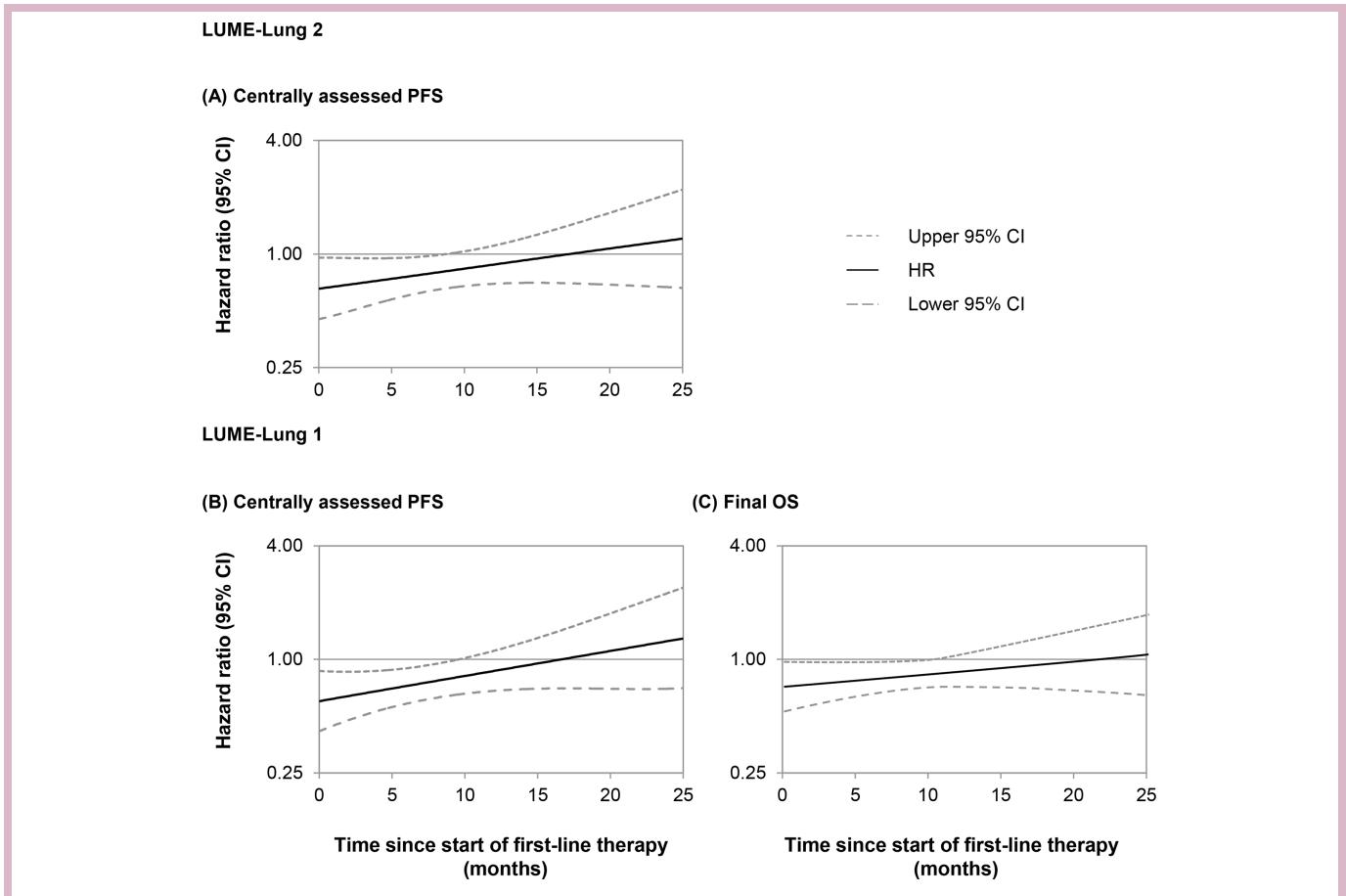


Figure 3 HR by treatment interaction plots for time since start of first-line therapy in patients with advanced adenocarcinoma histology. (A) Centrally assessed PFS (primary analysis) in patients treated with nintedanib-pemetrexed in LUME-Lung 2, (B) centrally assessed PFS (primary analysis) and (C) final OS in patients treated with nintedanib-docetaxel in LUME-Lung 1. OS, overall survival; PFS, progression-free survival.

[95% CI 6.4–12.0] vs 7.5 months [95% CI 5.9–8.6], HR 0.73 [95% CI 0.55–0.98]; $p=0.0327$) (see online supplementary figure 2B) and patients who had only progressive disease as best response during first-line treatment (median OS 9.8 months [95% CI 6.1–15.5] vs 6.3 months [95% CI 5.0–8.1], HR 0.62 [95% CI 0.41–0.94]) showed a greater survival benefit (see online supplementary figure 2C).

Additional evaluation of the data showed that TSFLT was strongly correlated with time to disease progression on first-line therapy in both studies (Pearson correlation coefficient for the nintedanib arm: 0.93 for LUME-Lung 2 [follow-up data] and 0.97 for LUME-Lung 1 [final OS data]).

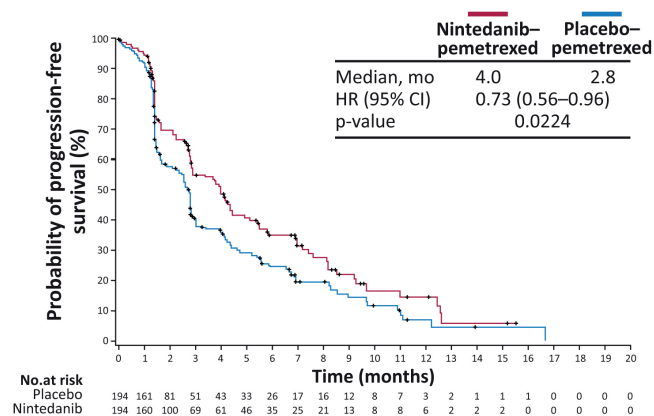
Discussion

Using data from two large, independent trials, we have identified and independently confirmed TSFLT as a prognostic and predictive clinical marker of nintedanib benefit in patients with pretreated advanced NSCLC of adenocarcinoma histology receiving concomitant chemotherapy with docetaxel or pemetrexed. A rigorous methodology was used to ensure the validity of TSFLT as a clinical marker. This clinical marker specifically defined a population of patients with adenocarcinoma

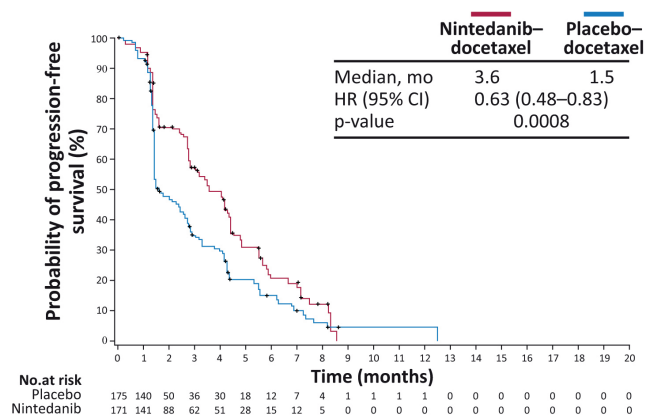
histology and TSFLT <9 months; this population experienced a 3-month improvement in median OS and more than double the median PFS compared with placebo-docetaxel in LUME-Lung 1. Confirmation of the cut-off point for TSFLT of 9 months was also validated using an additional methodology (see online supplementary appendix). Taken together with the OS benefits reported in the LUME-Lung 1 study for the overall adenocarcinoma population, these findings suggest that early progressors with adenocarcinoma histology may benefit relatively more from nintedanib-based combination treatment. To our knowledge, this is the first report of a predictive clinical marker of benefit for an antiangiogenic tyrosine kinase inhibitor in patients with NSCLC, which has been validated in an independent trial. TSFLT represents an easy-to-assess parameter and, given that shorter time is associated with more aggressive tumour characteristics, TSFLT represents a clinically relevant factor that can be used to guide treatment choice.

Results from the REVEL study also confirm TSFLT as a potential clinical marker for the efficacy of antiangiogenic therapy in patients with advanced NSCLC; TSFLT was one of the most predictive factors for ramucirumab in the second-line NSCLC setting.⁹ Interestingly, the

(A) Centrally assessed PFS (LUME-Lung 2)



(B) Centrally assessed PFS (LUME-Lung 1)



(C) Final OS (LUME-Lung 1)

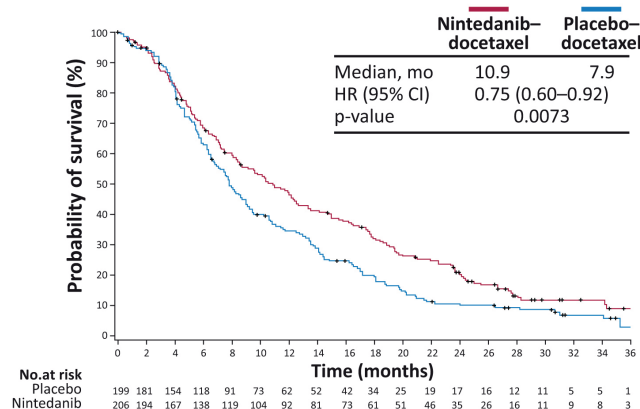


Figure 4 Kaplan–Meier analysis of PFS and OS in patients with advanced non-small cell lung cancer with adenocarcinoma histology with time since start of first-line therapy <9 months. (A) Centrally assessed PFS (primary analysis) in patients treated in LUME-Lung 2, (B) centrally assessed PFS (primary analysis) and (C) final OS in patients treated in LUME-Lung 1. OS, overall survival; PFS, progression-free survival.

opposite is true for the anti-PD-L1 inhibitor nivolumab; OS benefit with nivolumab treatment was greatest in patients with non-squamous NSCLC with >6 months since completion of their most recent platinum-based doublet chemotherapy regimen.¹¹ Additional *post-hoc* analyses have shown that nivolumab-treated patients with poorer prognostic features and/or aggressive disease, when combined with low tumour PD-L1 expression (<50%), may be at higher risk of death within the first 3 months of treatment.¹² As such, TSFLT may be a useful factor to guide second-line treatment selection.

Time to progression or time since completion of therapy has been used in other trials to characterise early-progressing or refractory NSCLC patient populations using similar time frames to the 9-month cut-off identified here.^{20–23} From a clinical perspective, a cut-off of 9 months since start of first-line therapy to define early progressors is also logical, given the average duration of first-line platinum-containing chemotherapy (~4.5–5 months) and the timing of routine CT scanning after the end of the first-line regimen (6–8-week intervals). Furthermore, time to

progression is an established clinical marker in ovarian cancer.²⁴

We hypothesise that there is a scientific rationale to explain the benefit of nintedanib-based treatment that is observed in adenocarcinoma early progressors, which is related to the biology of rapidly progressing tumours as well as the unique biology of adenocarcinoma. Rapidly progressing tumours contain a large proportion of proliferating cells and require high levels of oxygen and nutrients. As such, the growth of these tumours may particularly depend on the development of new blood vessels, which may render them more sensitive to the effects of antiangiogenic treatment than slowly progressing tumours. This hypothesis is supported by an analysis of gene expression. Clinical outcome data derived from a large NSCLC database were analysed using a gene set enrichment analysis that was applied to robust multi-array average normalised expression data generated by the Director's Challenge Consortium.²⁵ That analysis showed that genes relevant to cell proliferation are more frequently expressed in lung adenocarcinomas



from patients with early disease progression, indicating a large fraction of proliferating cells.²⁶ The potential ability of nintedanib to provide sustained blockade of the major angiokinas involved in tumour vascularisation (VEGFR-1–3, PDGFR- / and FGFR-1–3²⁷) may enhance the effectiveness of combination treatment and help to overcome the compensatory angiogenic signalling that has been observed when anti-VEGF/VEGFR agents are used alone.²⁷ We cannot exclude other possible reasons for the benefit of nintedanib-based treatment in adenocarcinoma early progressors, and further study would be needed to do so. However, we have observed no other obvious clinical features of these patients that could contribute to the effect seen.

As shown here, histological subtype has been linked to the therapeutic outcome of patients with NSCLC in other studies, including the E4599 study with bevacizumab,⁶ the REVEL study with ramucirumab⁹ and meta-analyses;^{28,29} all have shown an OS benefit with antiangiogenic compounds in combination with a taxane in patients with non-squamous/adenocarcinoma NSCLC. Potential differences in treatment effect in different histologies may relate to the molecular profile of adenocarcinoma, which is largely different from squamous cell cancer histology.^{30–34}

There have been extensive research efforts to identify predictive markers of benefit from antiangiogenic therapy in NSCLC. Hypertension has been suggested as a predictive marker for efficacy, but has not been validated and recent meta-analyses showed no association.³⁵ In our analysis, LDH levels were identified as a prognostic marker, as observed previously in several cancers,³⁶ including NSCLC.³⁷ However, LDH levels were not predictive for the effect of nintedanib here, as has been reported with some antiangiogenic agents in metastatic colorectal cancer.^{38–40}

Other studies have also shown a link between markers associated with more aggressive tumours/worse prognosis and greater relative benefit from antiangiogenic treatment.^{41–43} High baseline VEGF levels are associated with worse prognosis, and they are predictive of benefit from treatment with bevacizumab in patients with NSCLC⁴² or gastric cancer,⁴¹ although they were not predictive in other studies.⁴⁴ Similarly, high baseline levels of interleukin-6 predicted poor prognosis in patients with renal cell carcinoma, but greater relative benefit from the antiangiogenic pazopanib.⁴³ The antiangiogenic agent vandetanib combined with docetaxel has been shown to have a higher activity in pretreated NSCLC with a high epidermal growth factor receptor (*EGFR*) gene copy number or activating *EGFR* mutations than docetaxel alone; however, this effect is most likely linked to its dual *EGFR* inhibitory effect.⁴⁵ Low baseline circulating VEGF levels were also identified in an exploratory analysis as a predictive marker for vandetanib efficacy.⁴⁶

The LUME-Lung trials were largely comparable in patient characteristics and study design^{8,13} and the reported efficacy data in the control arms were comparable with those reported previously for second-line

therapies. Thus, both studies were considered to be adequate for justifying the identification and validation of the clinical marker. Limitations of this analysis include the fact that assessment of predictive clinical markers was not a primary or key secondary endpoint in these studies, and the early termination of the LUME-Lung 2 study.

In conclusion, TSFLT was shown to be the only prognostic and predictive clinical marker for the treatment effect of nintedanib combined with either docetaxel or pemetrexed in patients with advanced NSCLC of adenocarcinoma histology progressing following chemotherapy. This clinical marker defined that patients with shorter TSFLT who have a poorer prognosis derive a greater PFS and OS benefit from nintedanib. This marker could be used for patient selection, and further investigation is warranted regarding pathways promoting aggressive tumour growth and angiogenic tyrosine kinase inhibitor benefit.

Author affiliations

¹Boehringer Ingelheim Pharmaceuticals GmbH & Co. KG, Biberach, Germany

²University of Texas, MD Anderson Cancer Center, Houston, Texas, USA

³Lung Cancer Unit, Meir Medical Center, Kfar Saba, Israel

⁴Department of Oncology, Herlev University Hospital, Herlev, Denmark

⁵Department of Oncology, University of Turin, Orbassano, Italy

⁶Global Medical Affairs Oncology, Merck KGaA, Darmstadt, Germany

⁷Boehringer Ingelheim Pharmaceuticals Inc., Ridgefield, Connecticut, USA

⁸Department of Thoracic Oncology, Lung Clinic Grosshansdorf, Airway Research Center North (ARCN), Member of the German Center for Lung Research (DZL), Grosshansdorf, Germany

⁹Indiana University Melvin and Bren Simon Cancer Center, Indianapolis, Indiana, USA

¹⁰Institute of Clinical Pharmacology, Georg-August-University, Göttingen, Germany

Acknowledgements The authors thank all the patients who participated in the LUME-Lung studies and their families, all study centre staff and the worldwide teams at Boehringer Ingelheim, Parexel and Perceptive. Medical writing assistance, supported financially by Boehringer Ingelheim, was provided by Aurora O'Brate, PhD, and Suzanne Patel, PhD, of inVentiv Medical Communications (Maidenhead, UK), during the preparation of this manuscript.

Contributors BG-M, PS, MG, AM, SN, JB, C-NG, MR, NHH and RK contributed to the conception and design of the analysis. MG, AM, SN, MR and NHH were involved in the provision of patients in the trials on which this analysis was based. BG-M, PS, MG, AM, SN, JB, C-NG, MR, NHH, RK and JVH were involved in data analysis and interpretation. BG-M, NHH, JVH and RK jointly prepared the initial draft of the report and contributed equally. All authors actively contributed to subsequent drafts and provided final approval to submit the report for publication. The corresponding author had full access to all the data in the study and final responsibility for the decision to submit for publication.

Disclaimer This work was presented at the European Cancer Congress 2013 (ECCO-ESMO-ESTRO), held in Amsterdam, The Netherlands, 27 September to 1 October 2013 (Kaiser R, Barrueco J, Reck M, et al. Identification of a clinical marker for second-line combination treatment with nintedanib in adenocarcinoma non-small cell lung cancer (NSCLC) patients in two Phase III trials. Abstract P388).

Funding The studies on which this analysis was based were sponsored by Boehringer Ingelheim. Analyses were conducted by Boehringer Ingelheim.

Presentation statement The academic investigators and representatives of the sponsor, Boehringer Ingelheim, co-designed the trials involved in this analysis. The sponsor's statistical team (of which BG-M and PS are members) performed the statistical analyses. The corresponding author had full access to all the data in the study and had final responsibility for the decision to submit for publication.

Competing interests BG-M, JB, PS and RK are employees of Boehringer Ingelheim. C-NG was an employee of Boehringer Ingelheim at the time this manuscript was developed. RK and BG-M have patents pending for Boehringer Ingelheim. MR has received honoraria for lectures and advisory board meetings from Boehringer Ingelheim Pharma GmbH & Co. KG, Hoffmann-La Roche, Lilly,

Pfizer, AstraZeneca, Bristol Myers Squibb and Novartis. AM has received honoraria from Boehringer Ingelheim Pharma GmbH & Co. KG for advisory boards. SN has received non-financial support from Eli Lilly, Roche, AstraZeneca and MSD, during the conduct of this study. NHH and MG have no disclosures to declare. JVH has acted as a consultant for Boehringer Ingelheim, GlaxoSmithKline, AstraZeneca and Genentech, and has received research funding from GlaxoSmithKline and AstraZeneca.

Provenance and peer review Not commissioned; externally peer reviewed.

Open Access This is an Open Access article distributed in accordance with the Creative Commons Attribution Non Commercial (CC BY-NC 4.0) license, which permits others to distribute, remix, adapt, build upon this work non-commercially, and license their derivative works on different terms, provided the original work is properly cited and the use is non-commercial. See: <http://creativecommons.org/licenses/by-nc/4.0/>

© European Society for Medical Oncology (unless otherwise stated in the text of the article) 2017. All rights reserved. No commercial use is permitted unless otherwise expressly granted.

REFERENCES

- Travis WD, Brambilla E, Riely GJ. New pathologic classification of lung cancer: relevance for clinical practice and clinical trials. *J Clin Oncol* 2013;31:992–1001.
- Reck M, Popat S, Reinmuth N, et al. Metastatic non-small-cell lung cancer (NSCLC): ESMO Clinical Practice Guidelines for diagnosis, treatment and follow-up. *Ann Oncol* 2014.
- Pikor LA, Ramnarine VR, Lam S, et al. Genetic alterations defining NSCLC subtypes and their therapeutic implications. *Lung Cancer* 2013;82:179–89.
- Scagliotti G, Hanna N, Fossella F, et al. The differential efficacy of pemetrexed according to NSCLC histology: a review of two Phase III studies. *Oncologist* 2009;14:253–63.
- Scagliotti GV, Parikh P, von Pawel J, et al. Phase III study comparing cisplatin plus gemcitabine with cisplatin plus pemetrexed in chemotherapy-naïve patients with advanced-stage non-small-cell lung cancer. *J Clin Oncol* 2008;26:3543–51.
- Sandler A, Yi J, Dahlberg S, et al. Treatment outcomes by tumor histology in eastern cooperative Group Study E4599 of bevacizumab with paclitaxel/carboplatin for advanced non-small cell lung cancer. *J Thorac Oncol* 2010;5:1416–23.
- Hilberg F, Roth GJ, Krssak M, et al. BIBF 1120: triple angiokinase inhibitor with sustained receptor blockade and good antitumor efficacy. *Cancer Res* 2008;68:4774–82.
- Reck M, Kaiser R, Mellemegaard A, et al. LUME-Lung 1 Study Group. Docetaxel plus nintedanib versus docetaxel plus placebo in patients with previously treated non-small-cell lung cancer (LUME-Lung 1): a phase 3, double-blind, randomised controlled trial. *Lancet Oncol* 2014;15:143–55.
- Garon EB, Ciuleanu TE, Arrieta O, et al. Ramucirumab plus docetaxel versus placebo plus docetaxel for second-line treatment of stage IV non-small-cell lung cancer after disease progression on platinum-based therapy (REVEL): a multicentre, double-blind, randomised phase 3 trial. *Lancet* 2014;384:665–73.
- Brahmer J, Reckamp KL, Baas P, et al. Nivolumab versus docetaxel in advanced squamous-cell non-small-cell lung cancer. *N Engl J Med* 2015;373:123–35.
- Borghaei H, Paz-Ares L, Horn L, et al. Nivolumab versus docetaxel in advanced nonsquamous non-small-cell lung cancer. *N Engl J Med* 2015;373:1627–39.
- Bristol-Myers Squibb Pharma EEIG. Nivolumab Summary of Product Characteristics. 2016. http://www.ema.europa.eu/docs/en_GB/document_library/EPAR_-_Product_Information/human/003985/WC500189765.pdf.
- Hanna NH, Kaiser R, Sullivan RN, et al. LUME-Lung 2 Study group. Nintedanib plus pemetrexed versus placebo plus pemetrexed in patients with relapsed or refractory, advanced non-small cell lung cancer (LUME-Lung 2): A randomized, double-blind, phase III trial. *Lung Cancer*. In Press. 2016;102:65–73.
- Florescu M, Hasan B, Seymour L, et al. National Cancer Institute of Canada Clinical Trials Group. A clinical prognostic index for patients treated with erlotinib in national Cancer Institute of Canada clinical Trials Group study BR.21. *J Thorac Oncol* 2008;3:590–8.
- U.S Department of Health Human Services (DHHS), Food and Drug Administration (FDA), Center for Drug Evaluation and Research (CDER), Center for Biologics Evaluation and Research (CBER), (CDRH) CfDaRH. Guidance for industry: enrichment strategies for clinical trials to support approval of human drugs and biological products (draft guidance). 2012. <http://www.fda.gov/downloads/Drugs/GuidanceComplianceRegulatoryInformation/Guidances/UCM332181.pdf>.
- Collett D. *Modelling survival data in medical research*. 2nd ed. Boca Raton, FL: CRC Press LLC, 2003.
- Lees KR, Bluhmki E, von Kummer R, et al. ECASS, ATLANTIS, NINDS and EPITHET rt-PA Study Group. Time to treatment with intravenous alteplase and outcome in stroke: an updated pooled analysis of ECASS, ATLANTIS, NINDS, and EPITHET trials. *Lancet* 2010;375:1695–703.
- Hacke W, Donnan G, Fieschi C, et al. ATLANTIS Trials Investigators ECASS Trials Investigators NINDS rt-PA Study Group Investigators. Association of outcome with early stroke treatment: pooled analysis of ATLANTIS, ECASS, and NINDS rt-PA stroke trials. *Lancet* 2004;363:768–74.
- Lan KKG, DeMets DL, Di D. Discrete sequential boundaries for clinical trials. *Biometrika* 1983;70:659–63.
- Kim ES, Hirsh V, Mok T, et al. Gefitinib versus docetaxel in previously treated non-small-cell lung cancer (INTEREST): a randomised phase III trial. *Lancet* 2008;372:1809–18.
- Thatcher N, Chang A, Parikh P, et al. Gefitinib plus best supportive care in previously treated patients with refractory advanced non-small-cell lung cancer: results from a randomised, placebo-controlled, multicentre study (Iressa Survival Evaluation in Lung Cancer). *Lancet* 2005;366:1527–37.
- von Pawel J, Schiller JH, Shepherd FA, et al. Topotecan versus cyclophosphamide, doxorubicin, and vincristine for the treatment of recurrent small-cell lung cancer. *J Clin Oncol* 1999;17:658–67.
- Ramlau R, Gervais R, Krzakowski M, et al. Phase III study comparing oral topotecan to intravenous docetaxel in patients with pretreated advanced non-small-cell lung cancer. *J Clin Oncol* 2006;24:2800–7.
- National Comprehensive Cancer Network. NCCN Clinical Practice Guidelines in Oncology (NCCN Guidelines®): Ovarian cancer including fallopian tube cancer and primary peritoneal cancer version 2. 2015. http://www.nccn.org/professionals/physician_gls/pdf/ovarian.pdf.
- Director's Challenge Consortium for the Molecular Classification of Lung Adenocarcinoma. Gene expression-based survival prediction in lung adenocarcinoma: a multi-site, blinded validation study. *Nat Med* 2008;14:822–7.
- Hilberg F, Haslinger C, Garin-Chesa P, et al. Molecular correlates of clinical benefit from antiangiogenic therapy for patients with lung adenocarcinoma: A hypothesis. *J Clin Oncol* 2014;32:e22080.
- Casanovas O, Hicklin DJ, Bergers G, et al. Drug resistance by evasion of antiangiogenic targeting of VEGF signaling in late-stage pancreatic islet tumors. *Cancer Cell* 2005;8:299–309.
- Soria JC, Mauguen A, Reck M, et al. Systematic review and meta-analysis of randomised, phase II/III trials adding bevacizumab to platinum-based chemotherapy as first-line treatment in patients with advanced non-small-cell lung cancer. *Ann Oncol* 2013;24:20–30.
- Garassino MC, Martelli O, Brogginini M, et al. TAILOR trialists. Erlotinib versus docetaxel as second-line treatment of patients with advanced non-small-cell lung cancer and wild-type EGFR tumours (TAILOR): a randomised controlled trial. *Lancet Oncol* 2013;14:981–8.
- Sos ML, Michel K, Zander T, et al. Predicting drug susceptibility of non-small cell lung cancers based on genetic lesions. *J Clin Invest* 2009;119:1727–40.
- Mountzios G, Dimopoulos MA, Soria JC, et al. Histopathologic and genetic alterations as predictors of response to treatment and survival in lung cancer: a review of published data. *Crit Rev Oncol Hematol* 2010;75:94–109.
- Oxnard GR, Binder A, Jänne PA. New targetable oncogenes in non-small-cell lung cancer. *J Clin Oncol* 2013;31:1097–104.
- Imielinski M, Berger AH, Hammerman PS, et al. Mapping the hallmarks of lung adenocarcinoma with massively parallel sequencing. *Cell* 2012;150:1107–20.
- Kris MG, Johnson BE, Berry LD, et al. Using multiplexed assays of oncogenic drivers in lung cancers to select targeted drugs. *JAMA* 2014;311:1998–2006.
- Hurwitz HI, Douglas PS, Middleton JP, et al. Analysis of early hypertension and clinical outcome with bevacizumab: results from seven phase III studies. *Oncologist* 2013;18:273–80.
- Zhang J, Yao YH, Li BG, et al. Prognostic value of pretreatment serum lactate dehydrogenase level in patients with solid tumors: a systematic review and meta-analysis. *Sci Rep* 2015;5:9800.
- Koukourakis MI, Giatromanolaki A, Sivridis E. Tumour and Angiogenesis Research Group. Lactate dehydrogenase isoenzymes 1 and 5: differential expression by neoplastic and stromal cells in non-small cell lung cancer and other epithelial malignant tumors. *Tumour Biol* 2003;24:199–202.
- Hecht JR, Trarbach T, Hainsworth JD, et al. Randomized, placebo-controlled, phase III study of first-line oxaliplatin-based



- chemotherapy plus PTK787/ZK 222584, an oral vascular endothelial growth factor receptor inhibitor, in patients with metastatic colorectal adenocarcinoma. *J Clin Oncol* 2011;29:1997–2003.
39. Van Cutsem E, Bajetta E, Valle J, *et al.* Randomized, placebo-controlled, phase III study of oxaliplatin, fluorouracil, and leucovorin with or without PTK787/ZK 222584 in patients with previously treated metastatic colorectal adenocarcinoma. *J Clin Oncol* 2011;29:2004–10.
 40. Scartozzi M, Giampieri R, Maccaroni E, *et al.* Pre-treatment lactate dehydrogenase levels as predictor of efficacy of first-line bevacizumab-based therapy in metastatic colorectal cancer patients. *Br J Cancer* 2012;106:799–804.
 41. Van Cutsem E, de Haas S, Kang YK, *et al.* Bevacizumab in combination with chemotherapy as first-line therapy in advanced gastric cancer: a biomarker evaluation from the AVAGAST randomized phase III trial. *J Clin Oncol* 2012;30:2119–27.
 42. Dowlati A, Gray R, Sandler AB, *et al.* Cell adhesion molecules, vascular endothelial growth factor, and basic fibroblast growth factor in patients with non-small cell lung cancer treated with chemotherapy with or without bevacizumab—an Eastern Cooperative Oncology Group Study. *Clin Cancer Res* 2008;14:1407–12.
 43. Tran HT, Liu Y, Zurita AJ, *et al.* Prognostic or predictive plasma cytokines and angiogenic factors for patients treated with pazopanib for metastatic renal-cell cancer: a retrospective analysis of phase 2 and phase 3 trials. *Lancet Oncol* 2012;13:827–37.
 44. Hegde PS, Jubb AM, Chen D, *et al.* Predictive impact of circulating vascular endothelial growth factor in four phase III trials evaluating bevacizumab. *Clin Cancer Res* 2013;19:929–37.
 45. Heymach JV, Lockwood SJ, Herbst RS, *et al.* EGFR biomarkers predict benefit from vandetanib in combination with docetaxel in a randomized phase III study of second-line treatment of patients with advanced non-small cell lung cancer. *Ann Oncol* 2014;25:1941–8.
 46. Hanrahan EO, Ryan AJ, Mann H, *et al.* Baseline vascular endothelial growth factor concentration as a potential predictive marker of benefit from vandetanib in non-small cell lung cancer. *Clin Cancer Res* 2009;15:3600–9.
 47. Armstrong AJ, George DJ, Halabi S. Serum lactate dehydrogenase predicts for overall survival benefit in patients with metastatic renal cell carcinoma treated with inhibition of mammalian target of rapamycin. *J Clin Oncol* 2012;30:3402–7.
 48. Van Cutsem E, Vervenne WL, Bennouna J, *et al.* Phase III trial of bevacizumab in combination with gemcitabine and erlotinib in patients with metastatic pancreatic cancer. *J Clin Oncol* 2009;27:2231–7.



Time since start of first-line therapy as a predictive clinical marker for nintedanib in patients with previously treated non-small cell lung cancer

Birgit Gaschler-Markefski, Patricia Sikken, John V Heymach, Maya Gottfried, Anders Mellemgaard, Silvia Novello, Claudia-Nanette Gann, José Barrueco, Martin Reck, Nasser H Hanna and Rolf Kaiser

ESMO Open2017 2:

doi: 10.1136/esmoopen-2016-000102

Updated information and services can be found at:
<http://esmoopen.bmj.com/content/2/1/e000102>

These include:

References

This article cites 43 articles, 16 of which you can access for free at:
<http://esmoopen.bmj.com/content/2/1/e000102#ref-list-1>

Open Access

This is an Open Access article distributed in accordance with the Creative Commons Attribution Non Commercial (CC BY-NC 4.0) license, which permits others to distribute, remix, adapt, build upon this work non-commercially, and license their derivative works on different terms, provided the original work is properly cited and the use is non-commercial. See: <http://creativecommons.org/licenses/by-nc/4.0/>

Email alerting service

Receive free email alerts when new articles cite this article. Sign up in the box at the top right corner of the online article.

Notes

To request permissions go to:

<http://group.bmj.com/group/rights-licensing/permissions>

To order reprints go to:

<http://journals.bmj.com/cgi/reprintform>

To subscribe to BMJ go to:

<http://group.bmj.com/subscribe/>