



Diabetes-associated microbiota in fa/fa rats is modified by Roux-en-Y gastric bypass

Arora, Tulika; Seyfried, Florian; Docherty, Neil G; Tremaroli, Valentina; le Roux, Carel W; Perkins, Rosie; Bäckhed, Fredrik

Published in:
I S M E Journal

DOI:
[10.1038/ismej.2017.70](https://doi.org/10.1038/ismej.2017.70)

Publication date:
2017

Document version
Publisher's PDF, also known as Version of record

Document license:
[CC BY-NC-SA](https://creativecommons.org/licenses/by-nc-sa/4.0/)

Citation for published version (APA):
Arora, T., Seyfried, F., Docherty, N. G., Tremaroli, V., le Roux, C. W., Perkins, R., & Bäckhed, F. (2017). Diabetes-associated microbiota in fa/fa rats is modified by Roux-en-Y gastric bypass. *I S M E Journal*, 11(9), 2035-2046. <https://doi.org/10.1038/ismej.2017.70>

ORIGINAL ARTICLE

Diabetes-associated microbiota in fa/fa rats is modified by Roux-en-Y gastric bypass

Tulika Arora^{1,7}, Florian Seyfried^{2,3}, Neil G Docherty^{4,5}, Valentina Tremaroli¹, Carel W le Roux^{2,4,5}, Rosie Perkins¹ and Fredrik Bäckhed^{1,6}

¹Wallenberg Laboratory, Sahlgrenska Center for Cardiovascular and Metabolic Research, Department of Molecular and Clinical Medicine, Institute of Medicine, University of Gothenburg, Gothenburg, Sweden;

²Department of Investigative Medicine, Imperial College London, London, UK; ³Department of General, Visceral, Vascular and Pediatric Surgery, University Hospital of Wuerzburg, Wuerzburg, Germany; ⁴Diabetes Complications Research Centre, Conway Institute, School of Medicine and Medical Science, University College Dublin, Dublin, Ireland; ⁵Gastrosurgical Laboratory, Sahlgrenska Academy, University of Gothenburg, Gothenburg, Sweden and ⁶Novo Nordisk Foundation Center for Basic Metabolic Research, Section for Metabolic Receptology and Enteroendocrinology, Faculty of Health Sciences, University of Copenhagen, Copenhagen, Denmark

Roux-en-Y gastric bypass (RYGB) and duodenal jejunal bypass (DJB), two different forms of bariatric surgery, are associated with improved glucose tolerance, but it is not clear whether the gut microbiota contributes to this effect. Here we used fa/fa rats as a model of impaired glucose tolerance to investigate whether (i) the microbiota varies between fa/fa and nondiabetic fa/+ rats; (ii) the microbiota of fa/fa rats is affected by RYGB and/or DJB; and (iii) surgically induced microbiota alterations contribute to glucose metabolism. We observed a profound expansion of Firmicutes (specifically, *Lactobacillus animalis* and *Lactobacillus reuteri*) in the small intestine of diabetic fa/fa compared with nondiabetic fa/+ rats. RYGB-, but not DJB-, treated fa/fa rats exhibited greater microbiota diversity in the ileum and lower *L. animalis* and *L. reuteri* abundance compared with sham-operated fa/fa rats in all intestinal segments, and their microbiota composition resembled that of unoperated fa/+ rats. To investigate the functional role of RYGB-associated microbiota alterations, we transferred microbiota from sham- and RYGB-treated fa/fa rats to germ-free mice. The metabolic phenotype of RYGB-treated rats was not transferred by the transplant of ileal microbiota. In contrast, postprandial peak glucose levels were lower in mice that received cecal microbiota from RYGB-versus sham-operated rats. Thus, diabetes-associated microbiota alterations in fa/fa rats can be modified by RYGB, and modifications in the cecal microbiota may partially contribute to improved glucose tolerance after RYGB.

The ISME Journal (2017) 11, 2035–2046; doi:10.1038/ismej.2017.70; published online 19 May 2017

Introduction

Roux-en-Y gastric bypass (RYGB) is an effective treatment for morbid obesity as well as type 2 diabetes (Carlsson *et al.*, 2012). Diabetes remission is achieved within days of RYGB and before significant weight loss has been achieved (Brethauer *et al.*, 2013; Sjostrom *et al.*, 2014). Factors that have been proposed to contribute to the

metabolic improvements following RYGB include calorie restriction (Isbell *et al.*, 2010), increased postprandial release of glucagon-like peptide 1 (le Roux *et al.*, 2006), enhanced circulating levels of bile acids (Simonen *et al.*, 2012) and alterations in the metabolome (Mutch *et al.*, 2009; Graessler *et al.*, 2013a; Arora *et al.*, 2015). In addition, RYGB has been shown to induce marked shifts in the intestinal microbiota in rodents (Li *et al.*, 2011; Liou *et al.*, 2013) and humans (Zhang *et al.*, 2009; Kong *et al.*, 2013; Graessler *et al.*, 2013b; Tremaroli *et al.*, 2015). However, it is not clear whether these alterations in the microbiota contribute to the improvement of glucose metabolism associated with RYGB.

Duodenal jejunal bypass (DJB) is a stomach-sparing surgical procedure resulting in an intestinal configuration similar to that following RYGB (Figure 1a). DJB has been demonstrated to improve glucose tolerance in nonobese diabetic Goto-Kakizaki rats

Correspondence: F Bäckhed, Wallenberg Laboratory, Sahlgrenska Center for Cardiovascular and Metabolic Research, Department of Molecular and Clinical Medicine, Institute of Medicine, University of Gothenburg, Bruna Stråket 16, SE-413 45 Göteborg, Sweden. Email: Fredrik.Backhed@wlab.gu.se

⁷Current address: Novo Nordisk Foundation Center for Basic Metabolic Research, Section for Metabolic Receptology and Enteroendocrinology, Faculty of Health Sciences, University of Copenhagen, Copenhagen, Denmark.

Received 6 October 2016; revised 3 April 2017; accepted 7 April 2017; published online 19 May 2017

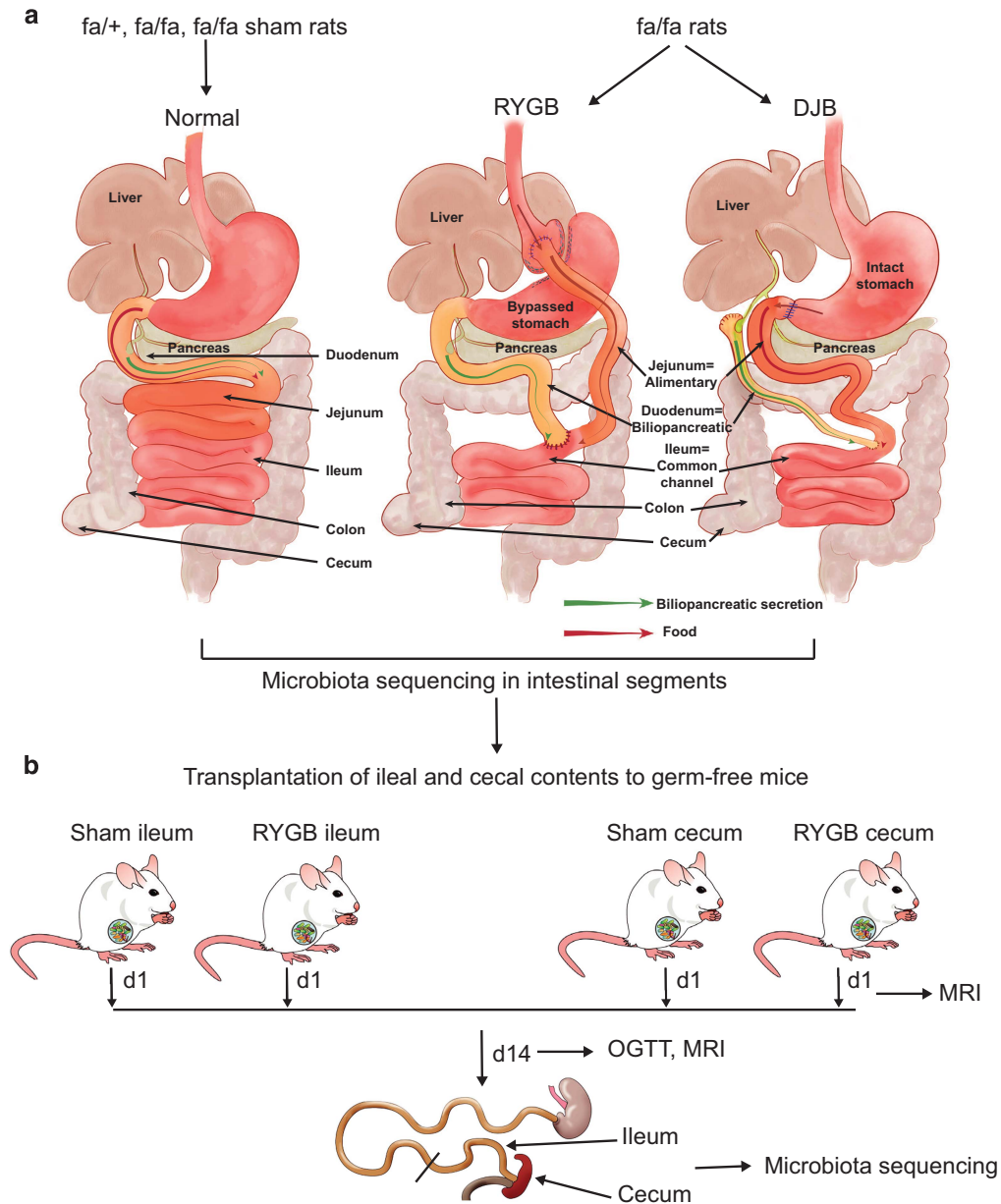


Figure 1 Schematic of experimental design. (a) Five groups of rats were used: unoperated *fa*+/+ and *fa*/*fa* rats, and sham-operated, RYGB- and DJB-treated *fa*/*fa* rats. In the sham group, gastrotomy on anterior wall of stomach and jejunostomy was performed with no reconfiguration of the gut. Intestinal segments were collected for microbiota sequencing. (b) Ileum and cecum from sham and RYGB rats (two donors each) were transferred to germ-free recipients ($n=4-5$ per donor). Magnetic resonance imaging (MRI) was performed 1 and 14 days after transplantation. An oral glucose tolerance test (OGTT) was performed and ileum and cecum from each recipient were collected for microbiota sequencing 14 days after transplantation.

(Rubino *et al.*, 2006; Kindel *et al.*, 2009; Speck *et al.*, 2011), although one study did not observe any improvement (Gavin *et al.*, 2011). DJB has also been reported to promote mild improvements in glucose tolerance in overweight humans (Cohen *et al.*, 2012; Klein *et al.*, 2012). However, it is not known how this procedure affects the gut microbiota.

Fa/*fa* rats are leptin receptor-deficient rats that develop impaired glucose tolerance with age (Ionescu *et al.*, 1985). Earlier studies in *fa*/*fa* rats have reported that RYGB promotes pronounced weight loss and reduces glucose and insulin levels

(Xu *et al.*, 2002) and DJB improves glucose tolerance (Rubino *et al.*, 2005; Li *et al.*, 2013; Patel *et al.*, 2013). Thus, *fa*/*fa* rats represent an attractive animal model to study surgery-induced physiological improvements (Greenwood *et al.*, 1982; Wolff *et al.*, 2009; Lifante *et al.*, 2012). Little is known about how the gut microbiota is linked to these changes in *fa*/*fa* rats, but a recent study reported that age and microenvironment affect the fecal microbiome in these rats (Lees *et al.*, 2014). Here, we studied the gut microbiota of *fa*/*fa* rats along the length of the intestine and investigated the following: (i) how the

microbiota varies between diabetic fa/fa rats and nondiabetic fa/+ rats along the length of the intestine; (ii) whether changes in the gut microbiota in fa/fa rats can be normalized by RYGB and/or DJB; and (iii) how the altered microbiota from different locations in the intestine contributes to glucose metabolism.

Materials and methods

Surgically treated rats

The five groups of rats used in the surgery experiments (fa/+, fa/fa, sham-operated fa/fa, RYGB-treated fa/fa and DJB-treated fa/fa rats) have been described in an earlier study to assess differences in glycemic control (Seyfried *et al.*, 2014). Briefly, male fa/+ and fa/fa rats were purchased from Charles River, Lyon, France, at 6 weeks of age and were individually housed under ambient humidity at 22 °C in a 12 h light/dark cycle. The rats had free access to drinking water and Purina Lab diet (Lab diet, St Louis, MO, USA, 16.7% of calories from fat). At 12 weeks of age, fa/fa rats were randomly allocated to an unoperated control group or to sham, RYGB or DJB surgery groups, and surgery was performed as described earlier (Seyfried *et al.*, 2014). All experiments were approved by the Veterinary Office of the Canton Zurich, Switzerland.

Duodenal, jejunal and ileal contents from fa/+, fa/fa and sham-operated groups and contents from corresponding segments (that is, biliopancreatic, alimentary and common channel limbs) of RYGB- and DJB-treated fa/fa rats (Figure 1a) were collected on day 35 after surgery and snap frozen in liquid nitrogen immediately. Colon and cecal contents from all the groups were excised and snap frozen.

Ileal and cecal transplants

Germ-free Swiss Webster male mice aged 10 weeks were used for all transplantation experiments (Figure 1b). Frozen contents from the ileum and cecum of sham- and RYGB-operated fa/fa rats were homogenized in phosphate-buffered saline buffer supplemented with reducing solution (0.02 M Na₂S and 1% cystein dissolved in NaHCO₃ buffer). Two separate donors from each group were selected. Germ-free mice (four to five mice per group) were fasted for 4 h and gavaged with the resultant slurry (200 µl). The transplanted mice were maintained in autoclaved individual ventilated cages with sterile bedding and fed autoclaved food and water *ad libitum* for 2 weeks. Whole-body magnetic resonance imaging was performed on day 1 and day 14 after the transplantation. On day 14, an oral glucose tolerance test (OGTT) was performed in mice by oral administration of 30% D-glucose (2 g kg⁻¹ body weight) after a 4 h fast. Blood was drawn from the tail vein at 0, 15, 30, 60, 90 and 120 min, and blood glucose levels were measured with a Bayer glucometer.

The ileum and cecum from colonized mice were collected and snap frozen in liquid nitrogen and stored at -80 °C until further process. These procedures were approved by the Ethics Committee on Animal Care and Use in Gothenburg, Sweden.

Gut microbiota analysis

DNA was extracted from all the rat samples using repeated bead-beating protocol as described previously (Salonen *et al.*, 2010), and the V1-V2 region of bacterial 16S rRNA gene was amplified using the 27F and barcoded 338R primers fused with 454 Titanium sequencing adaptors (Hamady *et al.*, 2008). Three independent 25 µl PCR reactions were performed for each sample under the following conditions: one cycle: 3 min at 95 °C; 30 cycles: 20 s at 95 °C, 30 s at 52 °C, and 60 s at 72 °C and 10 min at 72 °C. The resulting product was checked for size and purity on 1% agarose gel, further purified (NucleoSpin 740609, Macherey-Nagel, Düren, Germany), and quantified with the Quanti-iT PicoGreen dsDNA kit (Invitrogen, Carlsbad, CA, USA). Low-yield samples were speed vacuumed to concentrate DNA. All the samples were pooled in equal amounts (20 ng µl⁻¹) and purified again with magnetic beads (AMPure XP, Beckman, Danvers, MA, USA) to remove short amplification products. The purified amplicons were sequenced in a 454 GS FLX system with Titanium chemistry by GATC Biotech (Konstanz, Germany). Two samples with low sequences were excluded from analysis.

DNA was extracted from the mouse samples by the same protocol as above. The V4 region of the 16S rRNA gene was amplified using 515F and 806R primers designed for dual indexing (Kozich *et al.*, 2013), 10 ng µl⁻¹ samples were pooled (with the same purification steps) and the Illumina MiSeq (Illumina RTA v1.17.28; MCS v2.5) platform was used for the analysis.

Quality-filtered 454 pyrosequencing and Illumina reads from both experiments were analyzed using the QIIME (Quantitative Insights Into Microbial Ecology) software package (Caporaso *et al.*, 2010a; version 1.9.1) as described previously (Caesar *et al.*, 2015). Briefly, chimeric sequences were identified with ChimeraSlayer (Haas *et al.*, 2011) and excluded from all downstream analyses. The sequences were clustered into operational taxonomic units (OTUs) at a 97% identity threshold using a closed-reference OTU picking approach with UCLUST (Edgar, 2010) against the Greengenes reference database (DeSantis *et al.*, 2006). Representative OTUs were aligned using PyNAST (Caporaso *et al.*, 2010b) and used to build a phylogenetic tree which was used to estimate α - and β -diversity of samples using unweighted UniFrac (Lozupone and Knight, 2005). Sequences that could not be aligned with PyNAST and singletons were excluded. To correct for differences in sequencing depth, the same number of sequences were randomly sub-sampled for each sample and

used for diversity analyses. Statistical significance of sample groupings was tested with a multivariate nonparametric analysis of variance (Adonis, 999 permutations; Anderson, 2001). Sequence data from the rat and mice analyses are stored in the European Nucleotide Archive (www.ebi.ac.uk/ena) under accession numbers PRJEB20172 and PRJEB20197, respectively.

The online source BLAST was used to identify V1–V2 sequences at the species level for the most abundant and significant OTUs that had not already been specified in the OTU table.

Statistical analysis

Data are presented as mean \pm s.e.m. OTUs (at six taxonomic levels, from phylum to species level) differing between groups were identified in QIIME with the nonparametric Kruskal–Wallis test. To determine the differences between groups (which were not reported in QIIME), the OTUs that had a P -value < 0.05 (with false discovery rate correction) in the QIIME analysis were thereafter analyzed with Kruskal–Wallis test with Dunn's multiple comparison to determine pair-wise differences using GraphPad prism version 6 (GraphPad Software Inc.) as reported previously (Fak *et al.*, 2015). Statistical comparison of two groups was performed by the nonparametric Mann–Whitney U -test. Significance was established at $P < 0.05$.

Results

Composition of the gut microbiota of fa/fa rats is modified by RYGB but not by DJB

Fasting glucose and insulin levels in the five groups of rats used in this study (unoperated fa/+, unoperated fa/fa, sham-operated fa/fa, RYGB-treated fa/fa and DJB-treated fa/fa) have previously been reported: both variables were significantly higher in unoperated fa/fa rats compared with fa/+ rats at 17 weeks of age and were normalized in fa/fa rats that underwent RYGB but not in those that were sham operated (Seyfried *et al.*, 2014). There was a small reduction in fasting blood glucose levels in DJB-treated fa/fa rats compared with sham-operated rats, but levels remained significantly higher than those in RYGB-treated rats (Seyfried *et al.*, 2014). Body weight was similar in all groups of mice at 17 weeks of age except for the RYGB-treated group in which body weight was significantly lower (Seyfried *et al.*, 2014).

To determine whether these differences between the groups of rats were associated with changes in the microbiota along the length of the gut, we performed 454 sequencing on samples collected from the duodenum, jejunum, ileum and colon of these rats. In total, we generated 566521 reads averaging 5665 ± 2086 reads per sample. Alpha diversity (as measured by the observed species) did not differ between fa/fa and fa/+ rats nor between DJB-treated rats and sham-operated rats but was

significantly higher in the ileum of RYGB-treated rats compared with sham-operated rats (Figure 2a). Unweighted UniFrac analysis (sensitive to the phylogenetic relatedness of taxa) on all the samples revealed significant clustering by intestinal segment (Adonis: $R^2 = 0.12$, $P = 0.001$; Figure 2b). This analysis also showed that surgery could explain more variability in the microbiota composition (Adonis: $R^2 = 0.42$, $P = 0.001$) than intestinal segment; in particular, RYGB samples formed a separate cluster (Figure 2c). The non-phylogenetic Bray–Curtis analysis showed similar results (Supplementary Figure S1). We also performed unweighted UniFrac analysis on the samples divided according to intestinal segment and observed significant clustering of samples from RYGB-treated fa/fa rats in the duodenum (Adonis: $R^2 = 0.28$, $P = 0.001$), jejunum (Adonis: $R^2 = 0.34$, $P = 0.001$), ileum (Adonis: $R^2 = 0.41$, $P = 0.001$) and colon (Adonis: $R^2 = 0.31$, $P = 0.001$; Figure 2d).

Firmicutes was the most abundant phylum in the small intestinal regions of unoperated fa/+ rats, and increased in abundance in unoperated fa/fa rats to 98% of the total microbial composition in the jejunum and ileum (Figure 3a). The levels of Firmicutes were not affected by DJB compared with sham surgery in the small intestine of fa/fa rats, but were significantly lower in fa/fa rats after RYGB versus sham in the ileum (Figure 3a). Bacteroidetes was the second-most abundant phylum in the small intestinal regions of unoperated fa/+ rats and it showed a trend towards lower abundance in the duodenum, jejunum and ileum of unoperated fa/fa compared with fa/+ rats (Figure 3a). The levels of Bacteroidetes were not affected by DJB compared with sham surgery in the jejunum and ileum of fa/fa rats, but were significantly higher in fa/fa rats after RYGB versus sham in the ileum (Figure 3a). The abundance of the phylum Proteobacteria was significantly higher in the jejunum of unoperated fa/+ rats and RYGB-treated fa/fa rats compared with sham-operated fa/fa rats (Figure 3a).

By comparing the relative abundance of genera across the five groups of rats and along the length of the intestine, we showed that *Lactobacillus* was the predominant genus in all the intestinal regions in unoperated fa/fa, and sham-operated and DJB-treated rats (Supplementary Figure S2). By contrast, *Lactococcus* was the most abundant genus in RYGB-treated rats in all the intestinal regions (Supplementary Figure S2).

Supplementary Table S1 shows the taxa that significantly differed in abundance in unoperated fa/+ rats and RYGB-treated fa/fa rats compared with sham-operated fa/fa rats. Using this information, we focused on the most abundant bacterial species from the three most predominant phyla to identify key species that could potentially contribute to the observed differences in phenotype between the groups of rats. The taxa in Supplementary Table S1 included OTUs that had not earlier been identified at

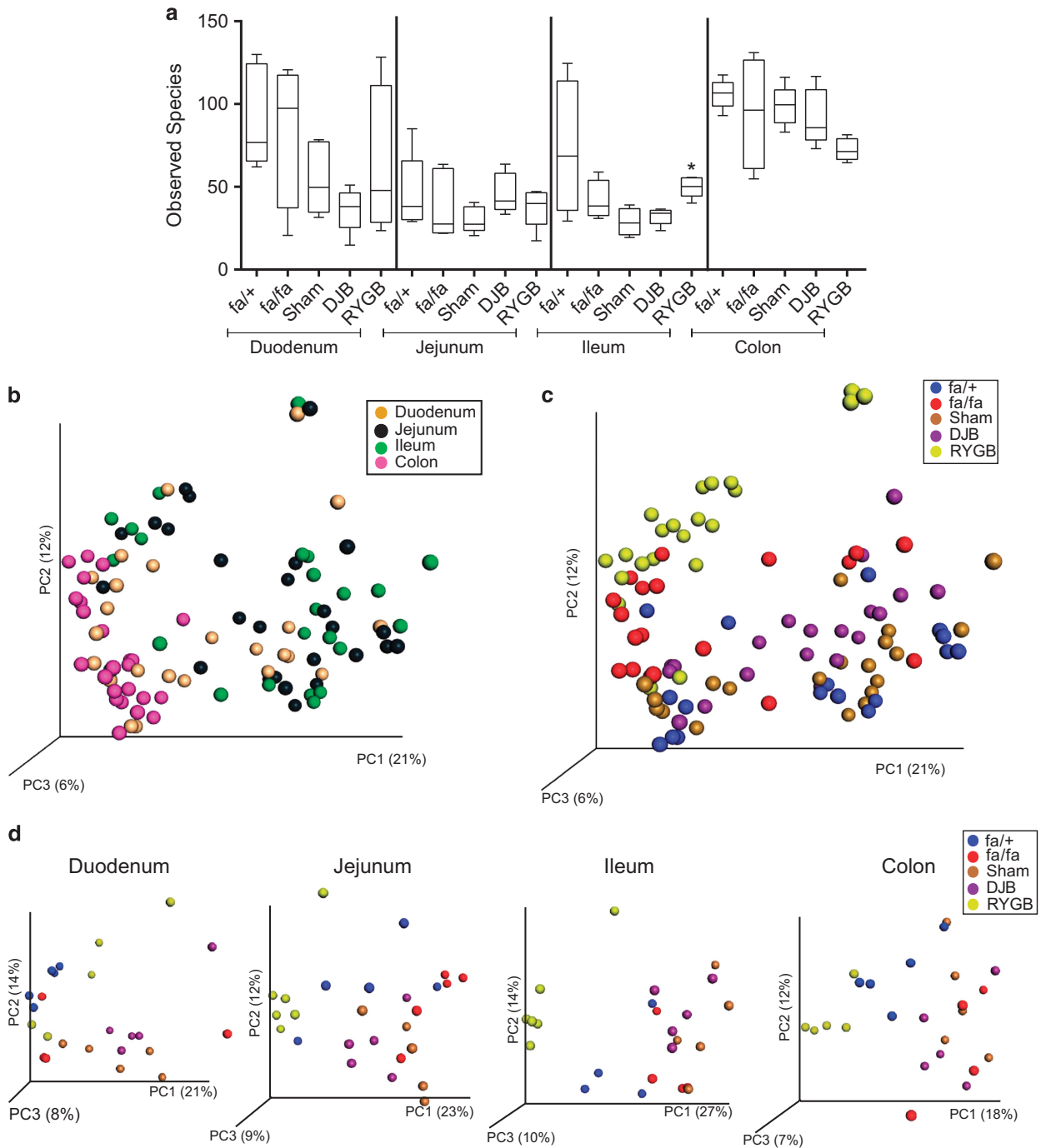


Figure 2 Bacterial diversity along the length of intestine in unoperated and operated fa/fa rats. **(a)** Diversity box plots obtained from alpha rarefaction measured by observed species. Data are shown as box and whiskers plots, indicating the median (thick line in the box), the 25th–75th percentile range (boxes), and the 1st–99th percentile range (whiskers). * $P < 0.05$ versus sham in ileum. Principal coordinate analysis (PCoA) plot using unweighted UniFrac distances of gut microbial communities separated either by **(b)** intestinal segment; **(c)** surgery; or **(d)** as in **(c)**, but divided according to intestinal segment in fa/+ ($n = 4–5$), fa/fa ($n = 4–5$), sham-operated fa/fa ($n = 5$), DJB-treated fa/fa ($n = 5$) and RYGB-treated fa/fa ($n = 5–6$) rats. The first three principal coordinates from PCoA are plotted. Symbols represent data from individual rats.

the species level, and we used BLAST to identify the most abundant OTUs within Firmicutes, Bacteroidetes and Proteobacteria at the species level. Thus, OTU 189681 was identified as *Lactobacillus animalis* (max score = 2169, total score = 2169, query cover = 100%, identity = 94%, E -value = 0.0); OTU

199716 was identified as *Bacteroides vulgatus* (max score = 2128, total score = 14 827, query cover = 100%, identity = 94%, E -value = 0.0); and OTU 1109362 was identified as *Escherichia coli* (max score = 2525, total score = 17 379, query cover = 100%, identity = 97%, E -value = 0.0).

Within Firmicutes, the most abundant species that differed across the groups of rats were *L. animalis*, *Lactobacillus reuteri* and *Lactococcus* sp.

(Figures 3b–d). Both *L. animalis* and *L. reuteri* showed a similar pattern in all the intestinal segments investigated, with increased abundance in

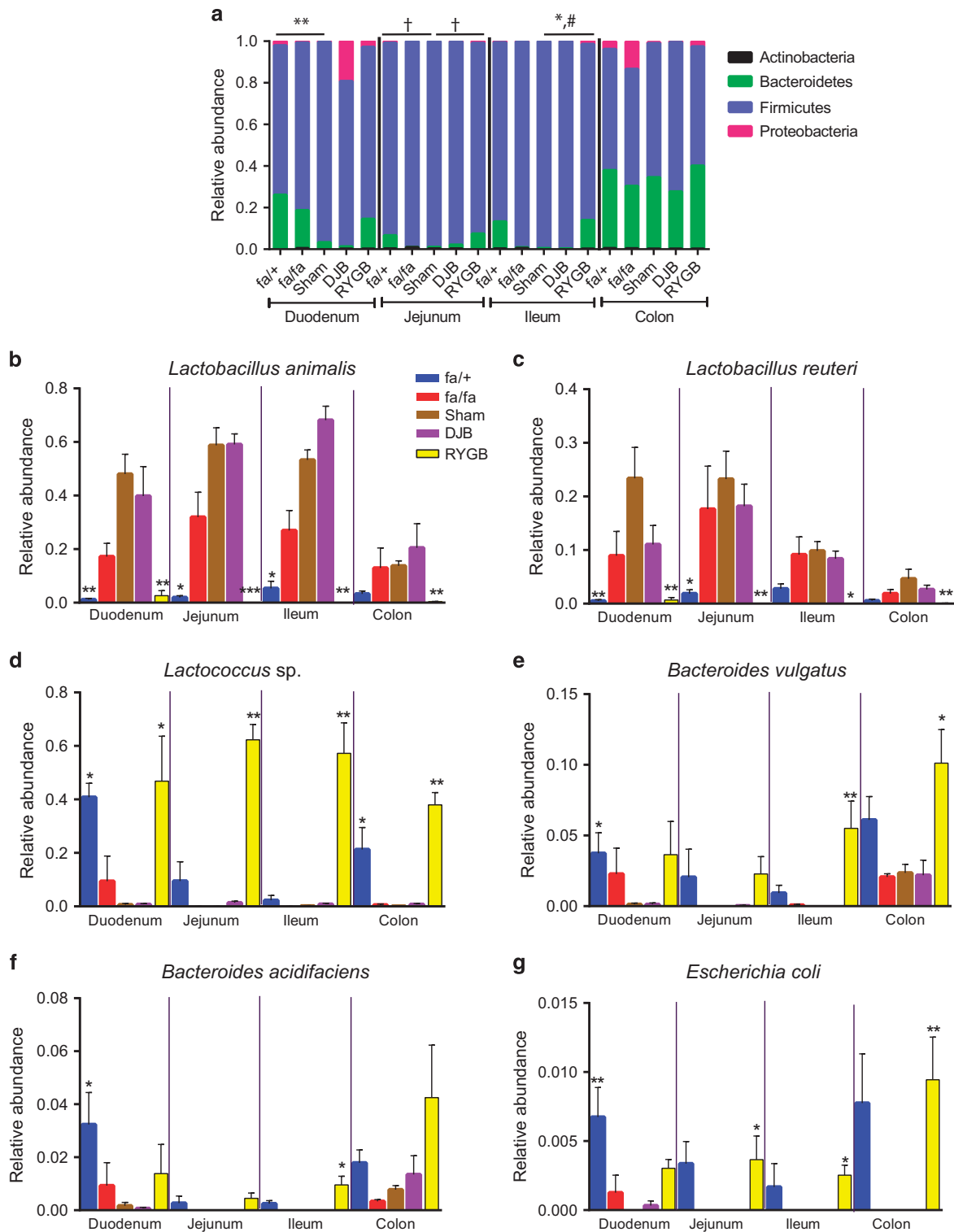


Figure 3 Microbial community shifts along the length of intestine in unoperated and operated fa/fa rats. Relative abundance of (a) major phyla, (b) *Lactobacillus animalis*, (c) *Lactobacillus reuteri*, (d) *Lactococcus* sp., (e) *Bacteroides vulgatus*, (f) *Bacteroides acidifaciens* and (g) *Escherichia coli* in duodenum, jejunum, ileum and colon of fa/+ ($n=4-5$), fa/fa ($n=4-5$), sham-operated fa/fa ($n=5$), DJB-treated fa/fa ($n=5$) and RYGB-treated fa/fa ($n=5-6$) rats. Data are mean \pm s.e.m. In a, * $P < 0.05$, ** $P < 0.01$ for Bacteroidetes, # $P < 0.05$ for Firmicutes and † $P < 0.05$ for Proteobacteria. In b–g, * $P < 0.05$, ** $P < 0.01$, *** $P < 0.001$ versus sham in respective intestinal segments based on nonparametric Kruskal–Wallis test with Dunn’s multiple comparison analysis.

sham-operated fa/fa rats compared with unoperated fa/+ rats, no difference between DJB-treated and sham-operated fa/fa rats, and significant reductions in RYGB-treated compared with sham-operated fa/fa rats (Figures 3b and c). *Lactococcus* sp. also showed a similar pattern in all the intestinal segments investigated, but its abundance was dramatically reduced in sham-operated fa/fa rats compared with unoperated fa/+ rats, not affected by DJB compared with sham surgery, and dramatically increased in RYGB-treated compared with sham-operated fa/fa rats (Figure 3d).

Within Bacteroidetes, the most abundant species that differed across the groups of rats were *B. vulgatus* and *Bacteroides acidifaciens* (Figures 3e and f). The abundance of these species was reduced in sham-operated fa/fa rats compared with unoperated fa/+ rats in the duodenum, not affected by DJB compared with sham surgery and increased in RYGB-treated compared with sham-operated fa/fa rats, and the differences were most pronounced in ileum (Figures 3e and f). Among Proteobacteria, *E. coli* also increased in the jejunum, ileum and colon in RYGB-treated compared with sham-operated fa/fa rats (Figure 3g).

Thus, RYGB surgery in fa/fa rats promoted changes in the microbial composition along the length of the intestine, in particular, a dramatic reduction in the abundance of *Lactobacillus* species and an increase in *Bacteroides* species, resulting in a microbiota composition similar to that of unoperated nondiabetic fa/+ rats. These changes (compared with sham surgery) were not observed following DJB in fa/fa rats.

Transplanting the ileal microbiota does not transfer the metabolic phenotype of fa/fa rats

As RYGB had the largest effect on the microbiota in the ileum, we transferred the ileal microbiota of sham- and RYGB-operated fa/fa rats to germ-free mice to investigate whether the ileal microbiota directly contributes to the metabolic phenotype of these rats. Alpha diversity was lower in the cecum of germ-free mice that received ileal microbiota from sham-operated rats (termed 'sham recipients') compared with germ-free mice that received ileal microbiota from RYGB-treated rats (termed 'RYGB recipients'; Figure 4a). Unweighted UniFrac analysis

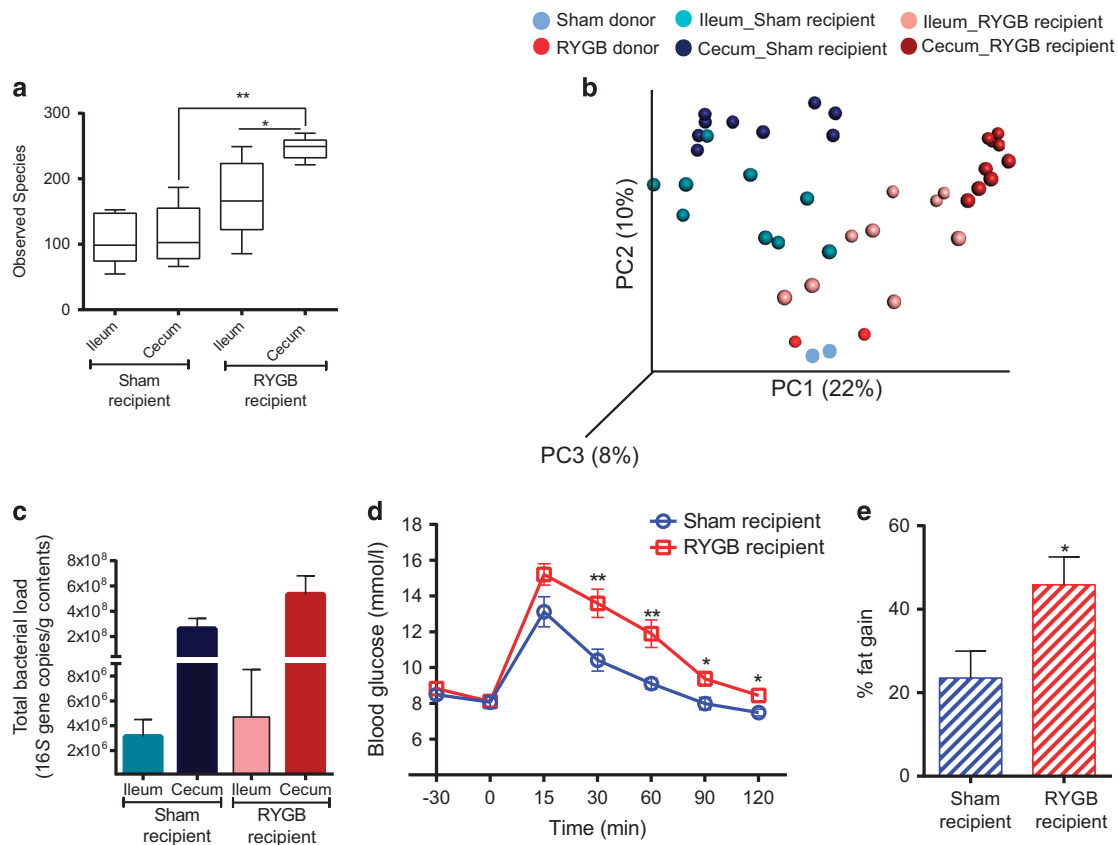


Figure 4 Ileal microbiota transplant. (a) Bacterial diversity as shown by diversity box plots obtained from alpha rarefaction measured by observed species. Data are shown as box and whiskers plots, indicating the median (thick line in the box), the 25th–75th percentile range (boxes) and the 1st–99th percentile range (whiskers). (b) Principal coordinate analysis (PCoA) plot using unweighted UniFrac distances of gut microbial communities obtained from sham and RYGB donors ($n=2$) and ileum and cecum of mice ($n=9$) colonized with ileal microbiota from sham-operated or RYGB-treated fa/fa rats. Symbols represent data from individual rat donors or mouse recipients. (c) DNA copies of total bacteria per gram contents in the ileum and cecum of mice ($n=9$) colonized with ileal microbiota from sham-operated or RYGB-treated fa/fa rats. (d) Oral glucose tolerance test curves and (e) fat percentage gain in mice ($n=9$) colonized with ileal microbiota from sham-operated or RYGB-treated fa/fa rats. Data are mean \pm s.e.m. * $P<0.05$, ** $P<0.01$, *** $P<0.001$ as indicated or versus sham recipient.

showed separation of sham and RYGB recipients along the first principal component (Adonis: $R^2 = 0.37$, $P = 0.001$, Figure 4b), indicating that the donor ileal microbiota determines the microbiota composition of the recipient.

Despite the lower microbial diversity in the recipients of sham compared with RYGB ileal microbiota, levels of colonization (that is, total bacteria) were similar in both the groups (Figure 4c), with higher bacterial load in the cecum compared with the ileum. Glucose tolerance (in response to an OGTT) was impaired and fat gain was higher in the RYGB recipients compared with the sham recipients (Figures 4d and e).

Transplanting the cecal microbiota transfers the metabolic phenotype of fa/fa rats

To investigate whether the microbiota in the cecum, which has a higher biomass and is more metabolically active compared with the ileal microbiota, of fa/fa rats directly contributes to the metabolic phenotype of

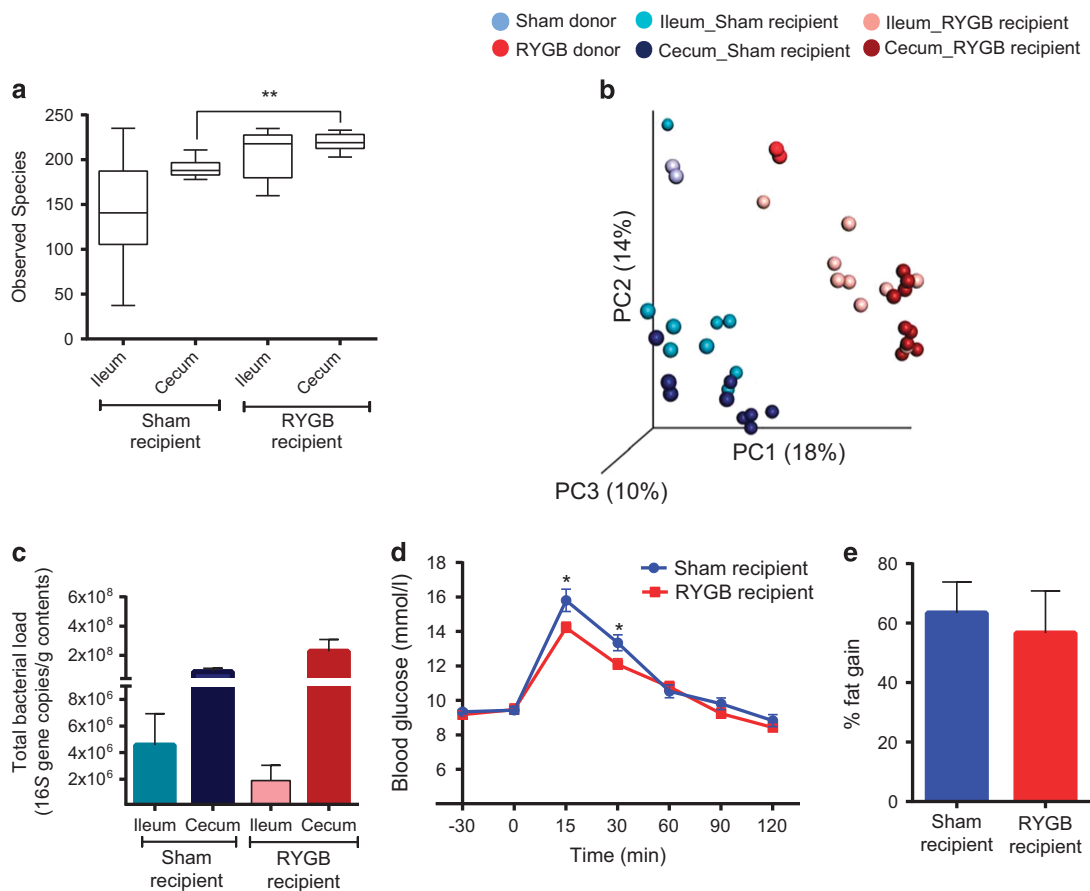
these rats, we transplanted the cecal microbiota of sham- and RYGB-operated fa/fa rats into germ-free mice and colonized the mice for 2 weeks.

Alpha diversity was lower in the cecum of recipients of cecal microbiota from sham- versus RYGB-operated fa/fa rats (Figure 5a). Unweighted UniFrac analysis confirmed that samples clustered according to the type of donor microbiota (Adonis: $R^2 = 0.38$, $P = 0.001$, Figure 5b).

There were no differences in the total levels of bacteria in the ileum or cecum of sham versus RYGB recipient mice (Figure 5c). However, the peak glucose concentration in the OGTT was higher in the sham recipients than in the RYGB recipients, indicating improved glucose tolerance in the RYGB recipients (Figure 5d). Adiposity in sham and RYGB recipients 2 weeks after transplantation was similar (Figure 5e).

Discussion

We previously investigated the effect of surgery on glycemic control in diabetic fa/fa rats and showed



that (i) RYGB produces significant weight loss and improved fasting glucose levels compared with sham surgery; and (ii) DJB produces mild improvements in fasting blood glucose without weight loss (Seyfried *et al.*, 2014). Here we studied the microbiota composition of these rats along the length of the intestine to investigate potential associations between the microbiota and glycemic control. First, we showed an expansion of Firmicutes and reduction in Bacteroidetes in the jejunum and ileum of fa/fa rats compared with nondiabetic fa/+ rats. Second, we observed that RYGB, but not DJB surgery, in fa/fa rats promoted changes in the microbial composition along the length of the intestine; in particular, a dramatic reduction in the abundance of *Lactobacillus* species (including *L. reuteri* and *L. animalis*) and an increase in *Lactococcus* and *Bacteroides* species, resulting in a microbiota composition similar to that of unoperated nondiabetic fa/+ rats. Finally, by microbiota transfer to germ-free mice, colonization with the cecal, but not the ileal, microbiota of RYGB-treated fa/fa rats partially transferred the phenotype of improved glycemic control to recipient mice.

An association between *Lactobacillus* species and blood glucose levels has previously been noted in humans. For example, an increased abundance of *Lactobacillus* species has been reported in both European (Karlsson *et al.*, 2013; Marlene *et al.*, 2013) and Chinese (Le *et al.*, 2012; Qin *et al.*, 2012) patients with type 2 diabetes, and fecal *Lactobacillus* levels were shown to correlate with blood glucose levels in a study of men with varying degrees of glucose tolerance (Larsen *et al.*, 2010). However, it is not known whether *Lactobacillus* contributes to type 2 diabetes or increases merely as a consequence of the disease. Indeed, *Lactobacillus* species are used as probiotics and have been shown to improve glucose levels in mice (Yakovlieva *et al.*, 2015).

Although the intestinal configuration following RYGB and DJB is similar (Figure 1), DJB did not affect the microbiota composition compared with sham. Microbiota changes in response to RYGB are likely to be produced by reduced calorie intake, changes in luminal pH and an early arrival of undigested food in the alimentary limb. RYGB is also accompanied by increased expression of glucose transporter 1 in rats (Saeidi *et al.*, 2013) and humans (Nguyen *et al.*, 2014), which facilitates increased glucose uptake in the alimentary limb thus reducing simple sugars in the intestinal lumen, which may explain the reduced levels of *Lactobacillus*. By contrast, DJB is a stomach-sparing procedure, and thus gastric juices, stomach size in addition to calorie intake are likely important factors in shaping the gut microbiota.

The important contribution of a microbiota to metabolic phenotype was first shown in germ-free C57/BL6 mice that gained 57% of fat and exhibited impaired glucose tolerance after 2 weeks of

colonization with cecal microbiota from a conventionally raised mouse (Backhed *et al.*, 2004), likely due to the extra energy provided by utilization of indigestible carbohydrates by a complex gut microbiota. More recent studies have shown that metabolic phenotypes can be transferred by transplanting the microbiota. For example, a reduction in adiposity after RYGB can be transferred by transplanting cecal contents from RYGB-treated mice (Liou *et al.*, 2013) or feces from RYGB-operated humans (Tremaroli *et al.*, 2015) into germ-free mice; however, these studies did not report an effect of microbiota transfer on glucose tolerance. Although a causal relationship between altered gut microbiota and improved glucose control after RYGB is uncertain in humans, it has been reported that fecal transplant from lean donors to men with metabolic syndrome improved insulin sensitivity and increased populations of butyrate-producing intestinal bacteria (Vrieze *et al.*, 2012).

In our study, the differences between the microbiota of sham- versus RYGB-treated fa/fa rats were higher in the ileum than in the colon, and we therefore speculated that the difference in metabolic phenotype between these groups could be transferred by transplanting the ileal microbiota. However, we showed that colonization of germ-free mice with ileal microbiota from sham-operated rats resulted in less fat gain and improved glucose tolerance compared with recipients of ileal microbiota from RYGB-treated rats. This could potentially be explained by the lower diversity in sham versus RYGB donor ileal microbiota, a phenotype that was transferred to recipients. Microbiota with low bacterial diversity may be less adapted to metabolize complex carbohydrates resulting in lower fat gain and improved glucose tolerance.

In contrast to mice colonized with ileal microbiota, mice colonized with cecal microbiota from sham-operated rats showed worse glucose tolerance compared with recipients of cecal microbiota from RYGB-treated rats. Although microbial diversity was lower in the cecum of recipients of cecal microbiota from sham- versus RYGB-operated rats, it was not as low as in the recipients of ileal microbiota from sham-operated rats. Thus, bacterial diversity may not be a limiting factor in the cecal transfer experiments. These results suggest that differences in cecal microbiota composition between the sham- versus RYGB-operated rats could contribute to the improved metabolic phenotype of RYGB-operated rats.

Taken together, our results showed that the microbiota composition of diabetic fa/fa rats along the length of intestine was significantly altered by RYGB but not by DJB, and resembled the microbiota composition of fa/+ rats. Importantly, we also showed that RYGB-induced effects on the cecal microbiota partly contributed to improved glucose tolerance.

Conflict of Interest

FB is the founder and shareholder of Metabogen AB. The remaining authors declare no conflict of interest.

Acknowledgements

We thank Anna Hallen for producing Figure 1 and Petia Kovatcheva for critical comments on the manuscript. The computations for pre-processing of 16S rRNA sequence data were performed on resources provided by the Swedish National Infrastructure for Computing (SNIC) through the Uppsala Multidisciplinary Center for Advanced Computational Science (UPPMAX). This study was supported by the Swedish Research Council, the Novo Nordisk Foundation, Torsten Söderberg's Foundation, Swedish Diabetes Foundation, Swedish Heart Lung Foundation, Göran Gustafsson's Foundation, IngaBritt och Arne Lundbergs Foundation, Knut and Alice Wallenberg Foundation, the Swedish Foundation for Strategic Research, the regional agreement on medical training and clinical research (ALF) between Region Västra Götaland and Sahlgrenska University Hospital and Science Foundation Ireland (SFI) ref 12/YI/B2480. FB is a recipient of an ERC Consolidator Grant (European Research Council, Consolidator grant 615362—METABASE). The financial support by the Deutsche Forschungsgemeinschaft and the Interdisciplinary Center for Clinical Research Würzburg (Florian Seyfried, SE 2027/1-1 and IZKF-Z-3/44) is gratefully acknowledged.

References

- Anderson MJ. (2001). A new method for non-parametric multivariate analysis of variance. *Austral Ecol* **26**: 32–46.
- Arora T, Velagapudi V, Pournaras DJ, Welbourn R, le Roux CW, Oresic M *et al.* (2015). Roux-en-Y gastric bypass surgery induces early plasma metabolomic and lipidomic alterations in humans associated with diabetes remission. *PLoS One* **10**: e0126401.
- Backhed F, Ding H, Wang T, Hooper LV, Koh GY, Nagy A *et al.* (2004). The gut microbiota as an environmental factor that regulates fat storage. *Proc Natl Acad Sci USA* **101**: 15718–15723.
- Brethauer SA, Aminian A, Romero-Talamas H, Batayyah E, Mackey J, Kennedy L *et al.* (2013). Can diabetes be surgically cured? Long-term metabolic effects of bariatric surgery in obese patients with type 2 diabetes mellitus. *Ann Surg* **258**: 628–637.
- Caesar R, Tremaroli V, Kovatcheva-Datchary P, Cani PD, Backhed F. (2015). Crosstalk between gut microbiota and dietary lipids aggravates WAT inflammation through TLR signaling. *Cell Metab* **22**: 658–668.
- Caporaso JG, Kuczynski J, Stombaugh J, Bittinger K, Bushman FD, Costello EK *et al.* (2010a). QIIME allows analysis of high-throughput community sequencing data. *Nat Methods* **7**: 335–336.
- Caporaso JG, Bittinger K, Bushman FD, DeSantis TZ, Andersen GL, Knight R. (2010b). PyNAST: a flexible tool for aligning sequences to a template alignment. *Bioinformatics* **26**: 266–267.
- Carlsson LM, Peltonen M, Ahlin S, Anveden A, Bouchard C, Carlsson B *et al.* (2012). Bariatric surgery and prevention of type 2 diabetes in Swedish obese subjects. *N Engl J Med* **367**: 695–704.
- Cohen R, Caravatto PP, Correa JL, Noujaim P, Petry TZ, Salles JE *et al.* (2012). Glycemic control after stomach-sparing duodenal-jejunal bypass surgery in diabetic patients with low body mass index. *Surg Obes Relat Dis* **8**: 375–380.
- DeSantis TZ, Hugenholtz P, Larsen N, Rojas M, Brodie EL, Keller K *et al.* (2006). Greengenes, a chimera-checked 16S rRNA gene database and workbench compatible with ARB. *Appl Environ Microbiol* **72**: 5069–5072.
- Edgar RC. (2010). Search and clustering orders of magnitude faster than BLAST. *Bioinformatics* **26**: 2460–2461.
- Fak F, Tremaroli V, Bergstrom G, Backhed F. (2015). Oral microbiota in patients with atherosclerosis. *Atherosclerosis* **243**: 573–578.
- Gavin TP, Sloan 3rd RC, Lukosius EZ, Reed MA, Pender JR, Boghossian V *et al.* (2011). Duodenal-jejunal bypass surgery does not increase skeletal muscle insulin signal transduction or glucose disposal in Goto-Kakizaki type 2 diabetic rats. *Obes Surg* **21**: 231–237.
- Graessler J, Bornstein TD, Goel D, Bhalla VP, Lohmann T, Wolf T *et al.* (2013a). Lipidomic profiling before and after Roux-en-Y gastric bypass in obese patients with diabetes. *Pharmacogenomics J* **14**: 201–207.
- Graessler J, Qin Y, Zhong H, Zhang J, Licinio J, Wong ML *et al.* (2013b). Metagenomic sequencing of the human gut microbiome before and after bariatric surgery in obese patients with type 2 diabetes: correlation with inflammatory and metabolic parameters. *Pharmacogenomics J* **13**: 514–522.
- Greenwood MR, Maggio CA, Koopmans HS, Sclafani A. (1982). Zucker fa/fa rats maintain their obese body composition ten months after jejunioileal bypass surgery. *Int J Obes* **6**: 513–525.
- Haas BJ, Gevers D, Earl AM, Feldgarden M, Ward DV, Giannoukos G *et al.* (2011). Chimeric 16S rRNA sequence formation and detection in Sanger and 454-pyrosequenced PCR amplicons. *Genome Res* **21**: 494–504.
- Hamady M, Walker JJ, Harris JK, Gold NJ, Knight R. (2008). Error-correcting barcoded primers for pyrosequencing hundreds of samples in multiplex. *Nat Methods* **5**: 235–237.
- Ionescu E, Sauter JF, Jeanrenaud B. (1985). Abnormal oral glucose tolerance in genetically obese (fa/fa) rats. *Am J Physiol* **248**: E500–E506.
- Isbell JM, Tamboli RA, Hansen EN, Saliba J, Dunn JP, Phillips SE *et al.* (2010). The importance of caloric restriction in the early improvements in insulin sensitivity after Roux-en-Y gastric bypass surgery. *Diabetes Care* **33**: 1438–1442.
- Karlsson FH, Tremaroli V, Nookaew I, Bergstrom G, Behre CJ, Fagerberg B *et al.* (2013). Gut metagenome in European women with normal, impaired and diabetic glucose control. *Nature* **498**: 99–103.
- Kindel TL, Yoder SM, Seeley RJ, D'Alessio DA, Tso P. (2009). Duodenal-jejunal exclusion improves glucose tolerance in the diabetic, Goto-Kakizaki rat by a GLP-1 receptor-mediated mechanism. *J Gastrointest Surg* **13**: 1762–1772.

- Klein S, Fabbrini E, Patterson BW, Polonsky KS, Schiavon CA, Correa JL *et al.* (2012). Moderate effect of duodenal-jejunal bypass surgery on glucose homeostasis in patients with type 2 diabetes. *Obesity* **20**: 1266–1272.
- Kong LC, Tap J, Aron-Wisnewsky J, Pelloux V, Basdevant A, Bouillot JL *et al.* (2013). Gut microbiota after gastric bypass in human obesity: increased richness and associations of bacterial genera with adipose tissue genes. *Am J Clin Nutr* **98**: 16–24.
- Kozich JJ, Westcott SL, Baxter NT, Highlander SK, Schloss PD. (2013). Development of a dual-index sequencing strategy and curation pipeline for analyzing amplicon sequence data on the MiSeq Illumina sequencing platform. *Appl Environ Microbiol* **79**: 5112–5120.
- Larsen N, Vogensen FK, van den Berg FWJ, Nielsen DS, Andreasen AS, Pedersen BK *et al.* (2010). Gut microbiota in human adults with type 2 diabetes differs from non-diabetic adults. *PLoS One* **5**: e9085.
- Le KA, Li Y, Xu X, Yang W, Liu T, Zhao X *et al.* (2012). Alterations in fecal Lactobacillus and Bifidobacterium species in type 2 diabetic patients in Southern China population. *Front Physiol* **3**: 496.
- le Roux CW, Aylwin SJ, Batterham RL, Borg CM, Coyle F, Prasad V *et al.* (2006). Gut hormone profiles following bariatric surgery favor an anorectic state, facilitate weight loss, and improve metabolic parameters. *Ann Surg* **243**: 108–114.
- Lees H, Swann J, Poucher SM, Nicholson JK, Holmes E, Wilson ID *et al.* (2014). Age and microenvironment outweigh genetic influence on the Zucker rat microbiome. *PLoS One* **9**: e100916.
- Li B, Lu Y, Srikant CB, Gao ZH, Liu JL. (2013). Intestinal adaptation and Reg gene expression induced by antidiabetic duodenal-jejunal bypass surgery in Zucker fatty rats. *Am J Physiol Gastrointest Liver Physiol* **304**: G635–G645.
- Li JV, Ashrafian H, Bueter M, Kinross J, Sands C, le Roux CW *et al.* (2011). Metabolic surgery profoundly influences gut microbial-host metabolic cross-talk. *Gut* **60**: 1214–1223.
- Lifante JC, Milone L, Korner J, Kopsombut G, Sebastian M, Inabnet WB 3rd. (2012). Sleeve gastrectomy improves glucose homeostasis in Zucker diabetic fatty rats. *Obes Surg* **22**: 1110–1116.
- Liou AP, Paziuk M, Luevano JM Jr, Machineni S, Turnbaugh PJ, Kaplan LM. (2013). Conserved shifts in the gut microbiota due to gastric bypass reduce host weight and adiposity. *Sci Transl Med* **5**: 178ra141.
- Lozupone C, Knight R. (2005). UniFrac: a new phylogenetic method for comparing microbial communities. *Appl Environ Microbiol* **71**: 8228–8235.
- Marlene R, Simone D, Berit H, Jutta Z, Eva A, Helmut B *et al.* (2013). Abundance and diversity of microbiota in type 2 diabetes and obesity. *J Diabetes Metab* **4**: 253.
- Mutch DM, Fuhrmann JC, Rein D, Wiemer JC, Bouillot JL, Poitou C *et al.* (2009). Metabolite profiling identifies candidate markers reflecting the clinical adaptations associated with Roux-en-Y gastric bypass surgery. *PLoS One* **4**: e7905.
- Nguyen NQ, Debreceni TL, Bambrick JE, Chia B, Deane AM, Wittert G *et al.* (2014). Upregulation of intestinal glucose transporters after Roux-en-Y gastric bypass to prevent carbohydrate malabsorption. *Obesity* **22**: 2164–2171.
- Patel RT, Shukla AP, Ahn SM, Moreira M, Rubino F. (2013). Surgical control of obesity and diabetes: the role of intestinal vs. gastric mechanisms in the regulation of body weight and glucose homeostasis. *Obesity* **22**: 159–169.
- Qin J, Li Y, Cai Z, Li S, Zhu J, Zhang F *et al.* (2012). A metagenome-wide association study of gut microbiota in type 2 diabetes. *Nature* **490**: 55–60.
- Rubino F, Forgione A, Cummings DE, Vix M, Gnuli D, Mingrone G *et al.* (2006). The mechanism of diabetes control after gastrointestinal bypass surgery reveals a role of the proximal small intestine in the pathophysiology of type 2 diabetes. *Ann Surg* **244**: 741–749.
- Rubino F, Zizzari P, Tomasetto C, Bluet-Pajot MT, Forgione A, Vix M *et al.* (2005). The role of the small bowel in the regulation of circulating ghrelin levels and food intake in the obese Zucker rat. *Endocrinology* **146**: 1745–1751.
- Saeidi N, Meoli L, Nestoridi E, Gupta NK, Kvas S, Kucharczyk J *et al.* (2013). Reprogramming of intestinal glucose metabolism and glycemic control in rats after gastric bypass. *Science* **341**: 406–410.
- Salonen A, Nikkila J, Jalanka-Tuovinen J, Immonen O, Rajilic-Stojanovic M, Kekkonen RA *et al.* (2010). Comparative analysis of fecal DNA extraction methods with phylogenetic microarray: effective recovery of bacterial and archaeal DNA using mechanical cell lysis. *J Microbiol Methods* **81**: 127–134.
- Seyfried F, Bueter M, Spliethoff K, Miras AD, Abegg K, Lutz TA *et al.* (2014). Roux-en Y gastric bypass is superior to duodeno-jejunal bypass in improving glycaemic control in Zucker diabetic fatty rats. *Obes Surg* **24**: 1888–1895.
- Simonen M, Dali-Youcef N, Kaminska D, Venesmaa S, Kakela P, Paakkonen M *et al.* (2012). Conjugated bile acids associate with altered rates of glucose and lipid oxidation after Roux-en-Y gastric bypass. *Obes Surg* **22**: 1473–1480.
- Sjostrom L, Peltonen M, Jacobson P, Ahlin S, Andersson-Assarsson J, Anveden A *et al.* (2014). Association of bariatric surgery with long-term remission of type 2 diabetes and with microvascular and macrovascular complications. *JAMA* **311**: 2297–2304.
- Speck M, Cho YM, Asadi A, Rubino F, Kieffer TJ. (2011). Duodenal-jejunal bypass protects GK rats from {beta}-cell loss and aggravation of hyperglycemia and increases enteroendocrine cells coexpressing GIP and GLP-1. *Am J Physiol Endocrinol Metab* **300**: E923–E932.
- Tremaroli V, Karlsson F, Werling M, Stahlman M, Kovatcheva-Datchary P, Olbers T *et al.* (2015). Roux-en-Y gastric bypass and vertical banded gastroplasty induce long-term changes on the human gut microbiome contributing to fat mass regulation. *Cell Metab* **22**: 228–238.
- Vrieze A, Van Nood E, Holleman F, Salojärvi J, Kootte RS, Bartelsman JFWM *et al.* (2012). Transfer of intestinal microbiota from lean donors increases insulin sensitivity in individuals with metabolic syndrome. *Gastroenterology* **143**: 913–916.e7.
- Wolff BS, Meirelles K, Meng Q, Pan M, Cooney RN. (2009). Roux-en-Y gastric bypass alters small intestine glutamine transport in the obese Zucker rat. *Am J Physiol Gastrointest Liver Physiol* **297**: G594–G601.

- Xu Y, Ohinata K, Meguid MM, Marx W, Tada T, Chen C *et al.* (2002). Gastric bypass model in the obese rat to study metabolic mechanisms of weight loss. *J Surg Res* **107**: 56–63.
- Yakovlieva M, Tacheva T, Mihaylova S, Tropcheva R, Trifonova K. (2015). Influence of *Lactobacillus brevis* 15 and *Lactobacillus plantarum* 13 on blood glucose and body weight in rats after high-fructose diet. *Benef Microbes* **6**: 505–512.
- Zhang H, DiBaise JK, Zuccolo A, Kudrna D, Braidotti M, Yu Y *et al.* (2009). Human gut microbiota in obesity and after gastric bypass. *Proc Natl Acad Sci USA* **106**: 2365–2370.



This work is licensed under a Creative Commons Attribution-NonCommercial-ShareAlike 4.0 International License. The images or other third party material in this article are included in the article's Creative Commons license, unless indicated otherwise in the credit line; if the material is not included under the Creative Commons license, users will need to obtain permission from the license holder to reproduce the material. To view a copy of this license, visit <http://creativecommons.org/licenses/by-nc-sa/4.0/>

© The Author(s) 2017

Supplementary Information accompanies this paper on The ISME Journal website (<http://www.nature.com/ismej>)