



## **Kidney fibroblast growth factor 23 does not contribute to elevation of its circulating levels in uremia**

Mace, Maria L.; Gravesen, Eva; Nordholm, Anders; Hofman-Bang, Jacob; Secher, Thomas; Olgaard, Klaus; Lewin, Ewa

*Published in:*  
Kidney International

*DOI:*  
[10.1016/j.kint.2017.01.015](https://doi.org/10.1016/j.kint.2017.01.015)

*Publication date:*  
2017

*Document version*  
Publisher's PDF, also known as Version of record

*Document license:*  
[CC BY-NC-ND](https://creativecommons.org/licenses/by-nc-nd/4.0/)

*Citation for published version (APA):*  
Mace, M. L., Gravesen, E., Nordholm, A., Hofman-Bang, J., Secher, T., Olgaard, K., & Lewin, E. (2017). Kidney fibroblast growth factor 23 does not contribute to elevation of its circulating levels in uremia. *Kidney International*, 92(1), 165-178. <https://doi.org/10.1016/j.kint.2017.01.015>

# Kidney fibroblast growth factor 23 does not contribute to elevation of its circulating levels in uremia



OPEN

Maria L. Mace<sup>1,2</sup>, Eva Gravesen<sup>2</sup>, Anders Nordholm<sup>1,2</sup>, Jacob Hofman-Bang<sup>2</sup>, Thomas Secher<sup>3</sup>, Klaus Olgaard<sup>2</sup> and Ewa Lewin<sup>1,2</sup>

<sup>1</sup>University of Copenhagen, Nephrological Department B, Herlev Hospital, Herlev, Denmark; <sup>2</sup>University of Copenhagen, Nephrological Department P, Rigshospitalet, Copenhagen, Denmark; and <sup>3</sup>Gubra, Hoersholm, Denmark

**Fibroblast growth factor 23 (FGF23) secreted by osteocytes is a circulating factor essential for phosphate homeostasis. High plasma FGF23 levels are associated with cardiovascular complications and mortality. Increases of plasma FGF23 in uremia antedate high levels of phosphate, suggesting a disrupted feedback regulatory loop or an extra-skeletal source of this phosphatonin. Since induction of FGF23 expression in injured organs has been reported we decided to examine the regulation of FGF23 gene and protein expressions in the kidney and whether kidney-derived FGF23 contributes to the high plasma levels of FGF23 in uremia. FGF23 mRNA was not detected in normal kidneys, but was clearly demonstrated in injured kidneys, already after four hours in obstructive nephropathy and at 8 weeks in the remnant kidney of 5/6 nephrectomized rats. No renal extraction was found in uremic rats in contrast to normal rats. Removal of the remnant kidney had no effect on plasma FGF23 levels. Well-known regulators of FGF23 expression in bone, such as parathyroid hormone, calcitriol, and inhibition of the FGF receptor by PD173074, had no impact on kidney expression of FGF23. Thus, the only direct contribution of the injured kidney to circulating FGF23 levels in uremia appears to be reduced renal extraction of bone-derived FGF23. Kidney-derived FGF23 does not generate high plasma FGF23 levels in uremia and is regulated differently than the corresponding regulation of FGF23 gene expression in bone.**

*Kidney International* (2017) **92**, 165–178; <http://dx.doi.org/10.1016/j.kint.2017.01.015>

KEYWORDS: FGF23; hyperparathyroidism; mineral metabolism; phosphate; uremia

Copyright © 2017, International Society of Nephrology. Published by Elsevier Inc. This is an open access article under the CC BY-NC-ND license (<http://creativecommons.org/licenses/by-nc-nd/4.0/>).

**Correspondence:** Ewa Lewin, University of Copenhagen, Nephrological Department B, Herlev Hospital, DK 2730 Copenhagen, Denmark. E-mail: [ewa.lewin@regionh.dk](mailto:ewa.lewin@regionh.dk) or [lewin@dadlnet.dk](mailto:lewin@dadlnet.dk)

Received 14 June 2016; revised 21 December 2016; accepted 5 January 2017; published online 22 March 2017

Patients with chronic kidney disease (CKD) develop very high plasma levels of fibroblast growth factor 23 (FGF23), an early and important component of their disturbed mineral and bone disorder (MBD).<sup>1–3</sup> A large increase in FGF23 is an important factor associated with high risk of morbidity and mortality.<sup>4–7</sup> Still, the mechanisms initiating and maintaining the high plasma levels of FGF23 in CKD are poorly understood,<sup>8–11</sup> and excessive secretion of FGF23 by the injured kidney has been suggested.<sup>12,13</sup>

FGF23 is a 32-kDa glycoprotein that activates the fibroblast growth factor receptor (FGFR) in the presence of the required coreceptor  $\alpha$ Klotho.<sup>11,14</sup> FGF23 decreases the type II sodium-dependent phosphate (P) cotransporters *NaPi2a* and *NaPi2c* in the proximal tubule of the kidney and thereby inhibits P reabsorption.<sup>15–18</sup> Furthermore, FGF23 reduces 1,25-dihydroxy vitamin D (1,25vitD) levels by inhibition of the 25-(OH)vitD 1- $\alpha$ -hydroxylase *Cyp27b1* and stimulation of the 1,25vitD 24-hydroxylase *Cyp24a1*.<sup>19–21</sup> FGF23 is part of the complex endocrine network maintaining  $Ca^{2+}$  and P homeostasis, and classical negative feedback loops have been demonstrated between FGF23, 1,25vitD, and parathyroid hormone (PTH).<sup>19,20,22,23</sup> FGF23 is also regulated by FGFR1-dependent signaling and local factors in bone.<sup>24–27</sup>

It is currently believed that osteoblasts and osteocytes are the major source of circulating FGF23.<sup>28–30</sup> However, recent evidence has partially challenged this view because conditional ablation of FGF23 in bone cells resulted in moderate reduction in circulating FGF23 levels; therefore, other cellular sources may contribute to circulating FGF23.<sup>31,32</sup> Furthermore, the FGF23 increase in uremia antedate high plasma levels of P, suggesting a disrupted feedback regulatory loop or an extraskeletal source of this phosphatonin.<sup>1,13</sup> The kidney has been proposed as an extraskeletal source of FGF23, because induced expression of FGF23 has recently been demonstrated in injured kidney models of CKD.<sup>12,13,33</sup>

The purpose of the present experimental study was to examine whether kidney-derived FGF23 contributes to the high plasma levels of FGF23 in CKD. This was undertaken by studying the expression of FGF23 induced in the kidney rudiment of the 5/6 nephrectomy CKD model and in the kidney of a short-term obstructive nephropathy model. The impact of known regulators of FGF23 expression in bone, such as calcitriol, PTH, dietary P load, and FGFR signaling

was also examined for potential impact on the regulation of *FGF23* expression levels in the injured kidney.

**RESULTS**

**Group characteristics**

Long-term uremia was induced by 5/6 nephrectomy, and the uremic rats were examined after 8 weeks and compared with age-matched control rats. A subgroup of the uremic rats had their parathyroid glands removed (PTX-uremic rats). Biochemistry of all groups is shown in Table 1.

**Induction and regulation of FGF23 expression in the kidney in uremia**

The kidney rudiment of the 5/6 nephrectomy model was examined after 8 weeks of uremia. *FGF23* gene expression was not detected in kidneys of control rats with normal kidney function, including control rats given calcitriol (Figure 1a). On the contrary, *FGF23* mRNA was clearly detected in kidneys of all uremic rats fed a standard or high-phosphate (HP) diet. The presence of FGF23 protein was confirmed by Western blot, with significantly higher protein levels in uremic HP rats ( $P < 0.05$ ) (Figure 1b and c). The injured kidney's *FGF23* expression was not further stimulated by calcitriol (Figure 1a). However, calcitriol affected the endogenous 1,25vitD regulation by a significant downregulation of the synthesis enzyme *Cyp27b1* and upregulation of the degradation enzyme *Cyp24a1* ( $P < 0.05$ ) (Figure 2h and i). An HP diet strongly stimulated the kidney's *FGF23* expression in uremic rats ( $P < 0.01$ ) (Figure 1a). It should, however, be noted that the HP diet also caused more severe kidney disease (Table 1). Uremic HP-diet rats had lower expression levels of the genes coding for the proteins constituting the FGF23 receptor complex *FGFR1 IIIc* and *αKlotho* and the phosphate cotransporters *NaPi2a* and *NaPi2c* ( $P < 0.01$ ) compared with uremic standard-diet rats and control rats (Figure 2a–g and j). There was no difference in expression of these genes in uremic standard-diet rats and control rats. *Cyp27b1* expression was strongly upregulated in uremic HP-diet rats (Figure 2h), consistent with our previous observation of normal circulating calcitriol levels in this model of long-term uremia.<sup>34</sup> *Cyp27b1* was similarly expressed in uremic standard-diet and control rats, along with same *Cyp24a1* expression levels (Figure 2h and i).

**Importance of PTH in the regulation of FGF23 gene expression in the kidney and bone in uremia**

The effect of PTH signaling on the regulation of *FGF23* gene expression in kidney and bone was examined in rats that underwent combined parathyroidectomy and 5/6 nephrectomy (PTX-uremic).<sup>35</sup> Expression of *FGF23* was induced in the kidney rudiment of PTX-uremic rats to a similar extent as in uremic rats (Figure 3a). Expression of *FGF23* was found in all bone samples, where its relative expression was higher than in the injured kidney. The uremic rats had higher bone *FGF23* mRNA and plasma FGF23 levels compared with levels in PTX-uremic rats ( $P < 0.05$ ) (Figure 3b, Table 1). The

**Table 1 | Plasma biochemistry**

	Control (n = 11)	Control Calcitriol (n = 5)	Uremic SD (n = 5)	Uremic SD calcitriol (n = 5)	Uremic HP (n = 11)	Uremic HP calcitriol (n = 5)	Uremic PTX (n = 3)	Control <sup>a</sup> vehicle (n = 6)	Control <sup>b</sup> FGFRi (n = 6)	Uremic <sup>a</sup> Vehicle (n = 8)	Uremic <sup>a</sup> FGFRi (n = 10)
Weight (g)	418 ± 14	375 ± 18	349 ± 21 <sup>b</sup>	282 ± 7 <sup>d</sup>	341 ± 33 <sup>b</sup>	283 ± 22 <sup>c</sup>	347 ± 16 <sup>b</sup>	422 ± 4	405 ± 12	370 ± 15 <sup>b</sup>	352 ± 10 <sup>b</sup>
Urea (mM)	6.6 ± 0.2	7.4 ± 0.2 <sup>d</sup>	13.8 ± 0.8 <sup>b</sup>	13.4 ± 0.7	20.3 ± 1.5 <sup>b,c</sup>	30.2 ± 7.0 <sup>c</sup>	21.3 ± 5.3 <sup>b</sup>	6.8 ± 0.3	7.3 ± 0.3	16.1 ± 1.5 <sup>b</sup>	18.2 ± 1.6 <sup>b</sup>
Creatinine (μM)	31 ± 2	42 ± 1 <sup>d</sup>	60 ± 1 <sup>b</sup>	64 ± 3	101 ± 11 <sup>b,c</sup>	154 ± 27 <sup>c</sup>	117 ± 43 <sup>b</sup>	32 ± 1	30 ± 1	72 ± 11 <sup>b</sup>	80 ± 14 <sup>b</sup>
Phosphate (mM)	1.97 ± 0.1	2.71 ± 0.1 <sup>d</sup>	1.92 ± 0.1	2.21 ± 0.1 <sup>d</sup>	3.09 ± 0.3 <sup>b,c</sup>	4.88 ± 0.1 <sup>c</sup>	4.43 ± 0.6 <sup>b</sup>	2.05 ± 0.1	2.00 ± 0.1	2.57 ± 0.2 <sup>b</sup>	2.67 ± 0.2 <sup>b</sup>
Ca <sup>2+</sup> (mM)	1.31 ± 0.1	1.41 ± 0.1 <sup>d</sup>	1.29 ± 0.1	1.49 ± 0.1 <sup>d</sup>	1.05 ± 0.1 <sup>b,c</sup>	1.04 ± 0.1 <sup>c</sup>	0.65 ± 0.1 <sup>b</sup>	1.35 ± 0.1	1.38 ± 0.1	1.25 ± 0.1	1.21 ± 0.1 <sup>b</sup>
PTH (pg/ml)	66 (38–132)	6 <sup>d</sup> (1–16)	40 (23–82)	6 <sup>c,d</sup> (1–14)	2010 <sup>b,c</sup> (271–3400)	1158 <sup>c,d</sup> (539–1835)	–	54 (34–211)	134 (36–252)	1175 <sup>b</sup> (355–2929)	1689 <sup>b</sup> (274–4659)
iFGF23 (pg/ml)	275 ± 19	2098 ± 184 <sup>d</sup>	#	#	2173 ± 428 <sup>b</sup>	16533 ± 4136 <sup>d</sup>	286 ± 45	367 ± 21	364 ± 22	1925 ± 544 <sup>b</sup>	2171 ± 597 <sup>b</sup>

No difference was detected between uremic rats or control rats allocated to FGFRi or vehicle.

Data are shown as mean ± SEM or range.

FGFRi, fibroblast growth factor receptor inhibitor; HP, high-phosphate diet; SD, standard diet.

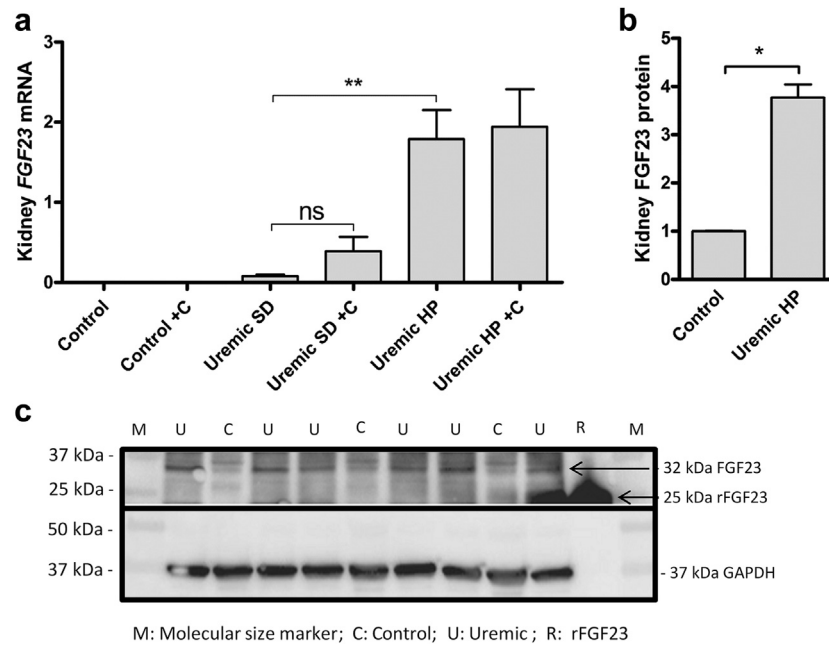
# not measured.

<sup>a</sup>Plasma biochemistry before administration of fibroblast growth factor receptor inhibitor or vehicle.

<sup>b</sup> $P < 0.05$  group versus control.

<sup>c</sup> $P < 0.05$  uremic SD versus uremic HP.

<sup>d</sup> $P < 0.05$  calcitriol versus noncalcitriol.



**Figure 1 | Kidney fibroblast growth factor 23 (FGF23) mRNA and protein in control and uremic rats.** The effect of high dietary phosphate load and calcitriol. (a) *FGF23* mRNA was not detected in the normal kidneys of control rats or in control rats given calcitriol (+C). *FGF23* mRNA was detected in the kidneys of all uremic rats. Uremic rats on a high-phosphate (HP) diet had significantly increased levels of kidney *FGF23* mRNA (\*\* $P < 0.01$ ). Kidney *FGF23* mRNA levels were not further stimulated by calcitriol in uremic rats fed a standard diet (SD) or in uremic rats fed an HP diet. *FGF23* mRNA is shown as the ratio to the mean of reference genes *actin*, *B2M*, and *GAPDH*. In all groups,  $n = 5$ . (b) A quantitative analysis of the Western blot of kidney FGF23 protein ( $n = 3$ ; \* $P < 0.05$ ). (c) Kidney FGF23 protein shown on a representative Western blot with glyceraldehyde-3-phosphate dehydrogenase (GAPDH) as a reference protein and recombinant FGF23 (R = rFGF23) as a positive control; C, control; U, uremic HP. The kidney protein from uremic rats was run in duplicates. Note that rFGF23 is a 25.5 kDa protein containing 228 AA residues. To optimize viewing of this image, please see the online version of this article at [www.kidney-international.org](http://www.kidney-international.org).

coreceptor  $\alpha$ Klotho was similarly downregulated in both uremic groups (Supplementary Figure S1) but was not detected in bone (data not shown).

#### Plasma levels of intact FGF23 in the renal artery and vein

In order to examine whether kidney-derived FGF23 contributes to the high circulating level of FGF23 in uremia, the concentration of intact FGF23 (iFGF23) was measured in the renal artery and vein. Control rats had a renal iFGF23 extraction ratio of  $0.31 \pm 0.04$  (Figure 4a). No renal extraction of iFGF23 was found in uremic rats, and we did not find higher iFGF23 levels in the renal vein of uremic rats compared with the renal artery (Figure 4a). To study the importance of the kidney in FGF23 metabolism, acute unilateral nephrectomy (UNX) was performed in normal rats, resulting in an immediate, large iFGF23 rise ( $P < 0.05$ ). Excision of the kidney rudiment of uremic rats had no effect on the high plasma iFGF23 levels, especially no decrease in plasma iFGF23 after nephrectomy was found (Figure 4b).

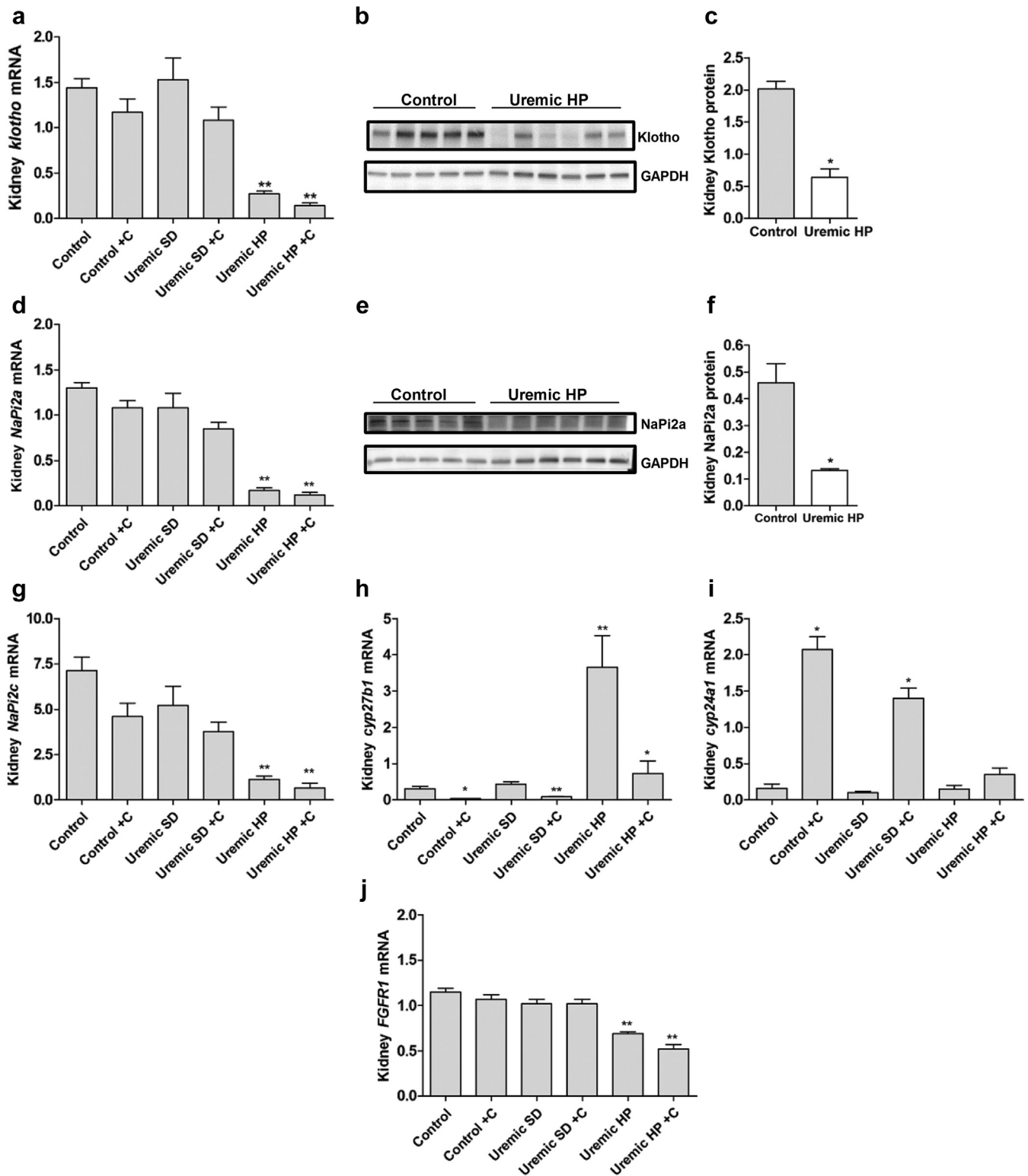
#### FGF receptor signaling

The influence of FGFR signaling was examined using a high dose of the FGFR inhibitor (FGFRi) PD173074, which within 5 hours gradually decreased plasma iFGF23 levels to approximately one-third of baseline in both uremic and normal rats ( $P < 0.01$ ) (Figure 5a). Despite stable plasma

$\text{Ca}^{2+}$  and P in all groups during the study (Supplementary Table S1), FGFRi caused a large increase in PTH levels in both control and uremic rats ( $P < 0.05$  and  $P < 0.01$ ) (Figure 5b). FGFRi resulted in not only a suppression of plasma iFGF23, but also a downregulation of the bone's *FGF23* expression in both uremic and normal control rats ( $P < 0.001$ ) (Figure 5c). *FGF23* expression in the kidney remained similar in both FGFRi- and vehicle-treated uremic rats (Figure 5d). The acute administration of FGFRi increased the expression levels of  $\alpha$ Klotho mRNA and protein (Figure 6a–c) and concomitantly increased *NaPi2a* and *NaPi2c* mRNA in normal rats ( $P < 0.05$ ), whereas it had no effect on these genes in uremic rats (Figure 6g–j). The protein expression of *NaPi2a* was not affected by FGFRi (Figure 6h and i). This might be due to the short observation time or to the rapid phosphaturic effect of PTH. Lower plasma levels of Klotho were found in uremic rats. Plasma Klotho was not affected by FGFRi (Figure 6d). FGFRi affected the enzymes involved in 1,25vitD metabolism in both normal and uremic rats, increasing *Cyp27* and decreasing *Cyp24* mRNA (Figure 6e and f).

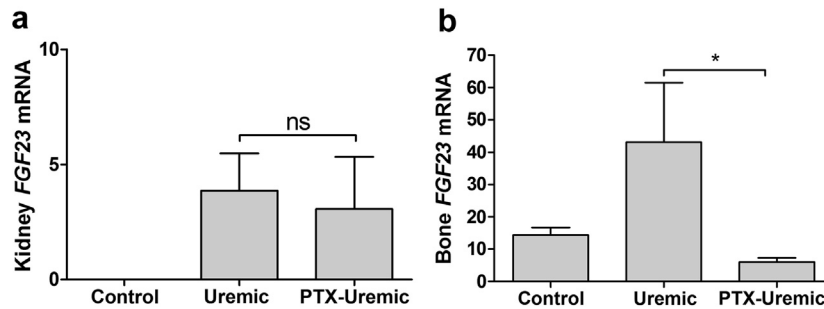
#### Kidney FGF23 correlates to the degree of fibrosis

The kidney *FGF23* mRNA levels were negatively associated with gene expressions of the kidney protective markers  $\alpha$ Klotho and *BMP7*, and positively associated with the



**Figure 2 | The effect of chronic uremia, calcitriol, and a high-phosphate (HP) diet on kidney expression of the fibroblast growth factor 23 (FGF23) receptor complex and FGF23 target genes. (a)** The same expression levels of  $\alpha$ *Klotho* mRNA were found in control and uremic standard-diet (SD) rats, whereas they were reduced in the uremic HP rats (\*\* $P < 0.01$  vs. sham and uremic SD). **(b)** Kidney *Klotho* protein shown on a representative Western blot with glyceraldehyde-3-phosphate dehydrogenase (GAPDH) as a reference protein, and **(c)** a quantitative analysis of the Western blot of kidney *Klotho* protein. Similar to the lower *Klotho* mRNA levels, the protein levels were reduced in the uremic HP rats (control  $n = 5$ , uremic  $n = 6$ ; \* $P < 0.05$ ). **(d)** The sodium-dependent phosphate cotransporter *NaPi2a* gene was expressed at the same level in control and uremic SD rats but significantly decreased in uremic HP rats (\*\* $P < 0.01$  vs. control and uremic). **(e)** *NaPi2a* protein is shown on a representative Western blot with GAPDH as a reference protein. **(f)** A quantitative analysis of the Western blot shows a significant (Continued)





**Figure 3 | Gene expressions of fibroblast growth factor 23 (FGF23) in kidney and bone of normal, uremic, and parathyroidectomized (PTX) and uremic rats.** (a) No expression of FGF23 was detected in the kidneys of control rats, whereas similar significantly elevated levels of FGF23 mRNA were found in both uremic and PTX-uremic rats. The relative level of FGF23 mRNA was lower in (a) the kidney than in (b) bone. (b) Expression of FGF23 was found in all bone samples. The level of FGF23 mRNA was higher in the bone of uremic rats compared with the PTX-uremic rats (\* $P < 0.05$ ). FGF23 mRNA is shown as the ratio to the mean of reference genes *actin*, *B2M*, *Arbp*, *EEF1A1*, and *GAPDH*. Control and uremic rats  $n = 6$ ; PTX-uremic rats  $n = 3$ .

fibrosis markers *periostin* and *TGF1b* (Supplementary Figures S2 and S3).

#### Expression of FGF23 detected in obstructive nephropathy

In order to examine whether FGF23 was expressed in the injured kidney tissue in the absence of severe mineral derangements and systemic effects of chronic kidney failure, unilateral ureter obstruction (UUO) was performed. Interestingly, minor levels of FGF23 mRNA were already detected after 2 hours of obstruction, with a further significant increase at 4 and 6 hours (Figure 7a). The increased levels persisted for 10 days in the obstructed kidney. FGF23 mRNA was not detected in the contralateral kidney or in the remaining kidney after UNX (Figure 8). Plasma levels of iFGF23 increased significantly after 2 hours of UUO ( $P < 0.05$ ) (Figure 7) and remained at a higher level for 10 days of observation time (Figure 8). A similar plasma FGF23 increase was found after UNX (Figure 8b). Bone FGF23 mRNA levels were similar among all groups (Figure 8c). There was no change in the expression levels of  $\alpha$ Klotho and phosphate transporters for up to 6-hour UUO, but these became downregulated after 1 day of obstruction (Figure 7b–d).

#### Localization of renal FGF23 mRNA by *in situ* hybridization

*In situ* hybridization was performed in order to illustrate which cells were expressing FGF23 in the kidney. In both the obstructed kidneys and the kidney rudiments of long-term uremic rats, cells within the interstitial space were expressing FGF23 mRNA. In 6-hour UUO, positive FGF23

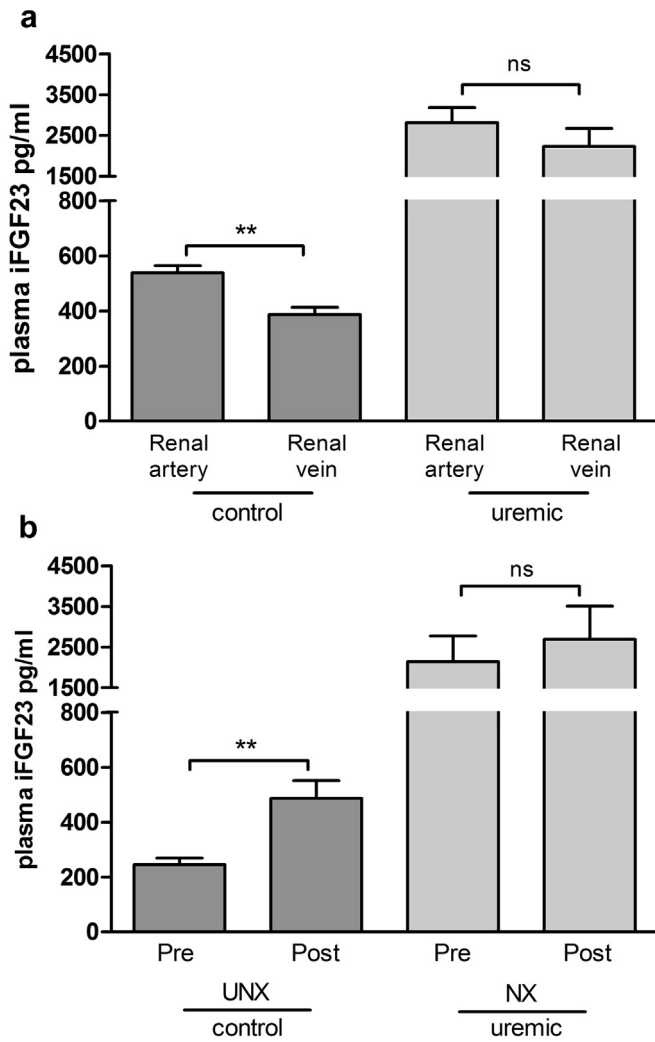
cells were found in the cortex, medulla, and papilla (Figure 9), which supported the high expression levels found by polymerase chain reaction (Figure 7). The results of immunohistochemistry are discussed in the Supplementary Figure S5.

#### DISCUSSION

In the present study we demonstrated significant expression of FGF23 in the injured kidney tissue of the 5/6 nephrectomy CKD model and in obstructive nephropathy in rats. Measurements of iFGF23 in the renal artery and vein demonstrated that kidney-derived FGF23 is not generating the high plasma levels of iFGF23 in uremia. The relative gene expression of FGF23 was lower in the kidney compared with bone, supporting the notion of bone being the primary source of FGF23 in CKD. The well-known stimulators of FGF23 expression in bone such as 1,25vitD and PTH did not affect the regulation of FGF23 gene expression in the injured kidney. Inhibition of the FGF receptor resulted in a downregulation of bone FGF23, but it had no effect on the kidney's FGF23 gene expression. A high dietary P load was, however, associated with significantly increased kidney FGF23 expression, although these rats also became more uremic and had further increased markers of fibrosis.

We have previously demonstrated a significant extraction of FGF23 in the normal kidney and a short half-life of FGF23 of 4 minutes in normal rats.<sup>10</sup> In the kidney rudiment of the uremic rat no extraction of FGF23 was found, supporting our earlier findings of a significant prolonged half-life of FGF23 after bilateral nephrectomy and illustrating an

**Figure 2 |** (Continued) decrease of NaPi2a protein in the kidneys of uremic HP rats (\* $P < 0.05$ ). Control  $n = 5$ ; uremic  $n = 6$ . (g) The sodium-dependent phosphate cotransporter *NaPi2c* gene was expressed at the same level in control and uremic SD rats but significantly decreased in uremic HP rats (\*\* $P < 0.01$  vs. control and uremic). (h) Similar expression levels of *Cyp27b1* were found in control and uremic SD rats. These levels were, however, significantly suppressed by calcitriol (+C) (\* $P < 0.05$ , \*\*  $P < 0.01$ , vs. untreated groups). Uremic HP rats had significantly higher levels of *Cyp27b1* (\*\* $P < 0.01$  vs. control and uremic SD), and these were also significantly suppressed by calcitriol (\* $P < 0.05$  vs. untreated group). (i) Similar levels of *Cyp24a1* were found in control, uremic SD, and uremic HP rats, and these were significantly stimulated by calcitriol in control and uremic SD rats (\* $P < 0.01$ ). (j) The same levels of *FGFR1IIIc* were found in control and uremic SD rats, but these were reduced in the uremic HP rats (\*\* $P < 0.01$  vs. control and uremic SD). All mRNAs are shown as the ratio to the mean of reference genes *actin*, *B2M*, *Arbp*, and *EEF1A1* ( $n = 5$  in all groups). To optimize viewing of this image, please see the online version of this article at [www.kidney-international.org](http://www.kidney-international.org).



**Figure 4 | Plasma levels of intact fibroblast growth factor 23 (FGF23) in the renal artery and vein of normal and uremic rats, and circulating FGF23 levels before and after acute nephrectomy.** (a) Concentration of intact FGF23 (iFGF23) in the renal artery and isolated renal vein of long-term uremic rats and age-matched control rats. Control rats had a significant difference in iFGF23 levels between the renal artery and vein, with a  $0.31 \pm 0.04$  renal extraction ratio ( $***P < 0.01$ ). In uremic rats the iFGF23 levels were significantly higher ( $P < 0.01$ ), but no significant renal extraction was found (uremic rats  $n = 9$ ; control rats  $n = 6$ ). (b) The effect of acute unilateral nephrectomy (UNX) in control rats or removal of the kidney rudiment (NX) in the uremic rats on iFGF23 levels. Acute UNX in control rats resulted in an immediate significant increase in iFGF23 ( $***P < 0.01$ ) 15 minutes after UNX. NX in uremic rats did not change the plasma levels of iFGF23. Control and uremic rats  $n = 6$ .

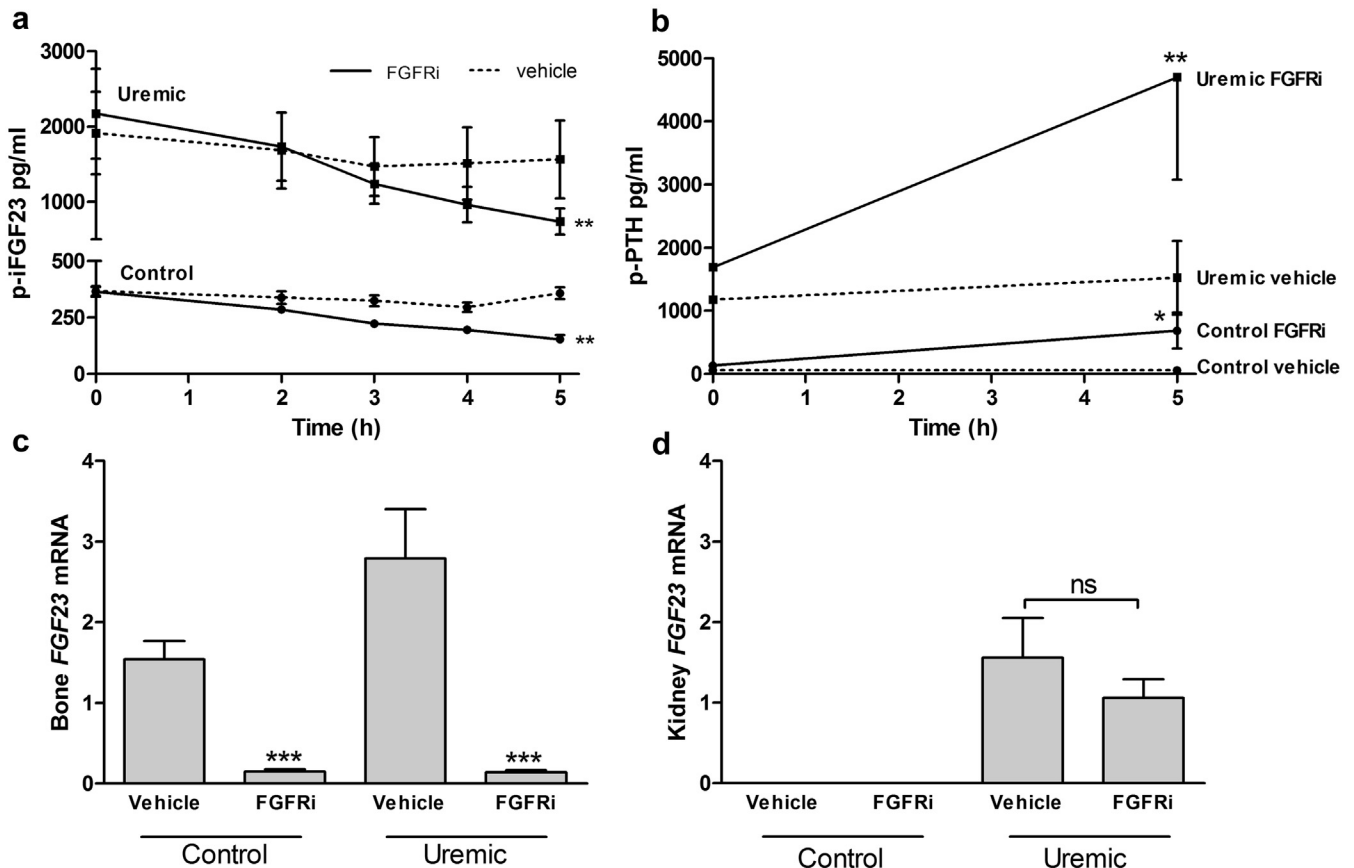
essential function of the kidney in FGF23 metabolism.<sup>10</sup> The increase in plasma FGF23 levels after ureter obstruction underlines the impact of renal extraction of the hormone on its circulating levels. Noticeably, FGF23 levels were not higher in the renal vein compared with the renal artery in uremic rats, as would have been expected if the kidney were a major contributor to circulating levels. Even though the uremic and PTX-uremic rats had the same expression of *FGF23* in their injured kidneys, the PTX-uremic rats had the same plasma

FGF23 levels as control rats. Uremic rats had ten-fold higher plasma FGF23, and removal of the remnant kidney tissue did not result in a drop in FGF23 plasma. Collectively, these results illustrate that kidney-derived FGF23 is not contributing significantly to the high plasma levels of FGF23 in uremia.

Although significant FGF23 expression in injured kidney has been reported by different investigators,<sup>12,33</sup> the intrarenal localization of FGF23 is still controversial. In the present study, *in situ* hybridization clearly demonstrated that the main sites of *FGF23* mRNA were exclusively in cells within the interstitial space of both the obstructed kidney and kidney rudiment of uremic rats. This is in contrast to other investigations reporting that FGF23 protein was predominantly expressed in tubular cells by immunostaining. Zanchi *et al.* found focal expression of FGF23 in both proximal and distal tubulus cells in a model of diabetic nephropathy.<sup>33</sup> Expression of *FGF23* was detected when the rats had developed proteinuria and early kidney injury but did not coincide with higher plasma levels of FGF23.<sup>33</sup> Spichtig *et al.* described expression of FGF23 in the cells lining the cysts in a mouse model and in a rat model of polycystic kidney disease before a rise in plasma creatinine and urea. This was associated with an increase in plasma FGF23, while *FGF23* mRNA levels in bone remained unchanged.<sup>12</sup> We demonstrated FGF23 protein using Western blot and found significant bands in the kidney tissue of uremic rats and no or minimal protein detected in control rats. The latter could be due to FGF23 protein in capillaries and bound in receptors. We also demonstrated a very early expression of kidney *FGF23* gene at 4 and 6 hours of obstructive nephropathy. Collectively, all studies illustrate that the injured kidney expresses FGF23 regardless of the kidney disease model. Further investigations are needed to better characterize these cells localized in the interstitial space expressing FGF23.

Similar expression of *FGF23* was found in the injured kidneys of PTX-uremic rats and uremic rats with intact parathyroids. There was no increase in iFGF23 plasma levels and bone expression in PTX-uremic rats. Lavi-Moshayoff *et al.* have previously demonstrated an important impact of hyperparathyroidism on the development of the high levels of FGF23 in uremia.<sup>23</sup> In the present investigation we found no impact of PTH on the kidney's *FGF23* expression. 1,25vitD is a strong stimulus for *FGF23* expression in bone.<sup>19,20</sup> In the present study no effect of calcitriol was found on the kidney's *FGF23* expression, although it cannot be excluded that calcitriol administration might affect kidney *FGF23* via its impact on endogenous 1,25vitD metabolism. As such, our results demonstrate that kidney *FGF23* is expressed independently of the classical regulatory feedback loops.

FGFR1 signaling has emerged as an important pathway by which FGF23 is regulated in bone.<sup>10,24,26,27</sup> In the present investigation, inhibition of the FGF receptor resulted already after 5 hours in a suppression of *FGF23* expression in bone in both control and uremic rats, along with decreased plasma levels. In contrast to this effect on bone, FGFRi had no effect



**Figure 5 | Effect of fibroblast growth factor receptor inhibition (FGFRi) on plasma levels of intact fibroblast growth factor 23 (p-iFGF23) and parathyroid hormone (p-PTH), and on the gene expression of FGF23 in bone and kidney in normal and uremic rats.** (a) The p-iFGF23 after a single 20-mg dose of PD173074, the pharmacological FGF receptor inhibitor (FGFRi), or vehicle administered at 0 hours (h). FGFRi significantly decreased the p-iFGF23 level after 5 hours to one-third of baseline values in both control and uremic rats (\*\* $P < 0.01$ ). The p-iFGF23 levels were stable in the vehicle-treated groups. (b) FGFRi resulted in a significantly large increase in p-PTH in both control and uremic rats (\* $P < 0.05$ , \*\* $P < 0.01$ , vs. vehicle groups) as measured after 5 hours. PTH remained stable in vehicle groups. Plasma  $Ca^{2+}$  and P remained stable during the study in all groups (Supplementary Table S1). (c) FGFRi suppressed FGF23 expression in bone in both control and uremic rats (\*\* $P < 0.001$  vs. vehicle). (d) No expression of FGF23 was detected in the kidneys of control rats. Similar levels of kidney FGF23 mRNA were found in uremic rats treated with vehicle versus FGFRi. Kidney FGF23 mRNA is shown as the ratio to the mean of reference genes *B2M*, *EEF1A1*, and *Arbp*. Bone FGF23 mRNA is shown as the ratio to the mean of reference genes *GAPDH* and *EEF1A1*. Control vehicle and FGFRi  $n = 6$ , uremic vehicle  $n = 8$ , and uremic FGFRi  $n = 10$ .

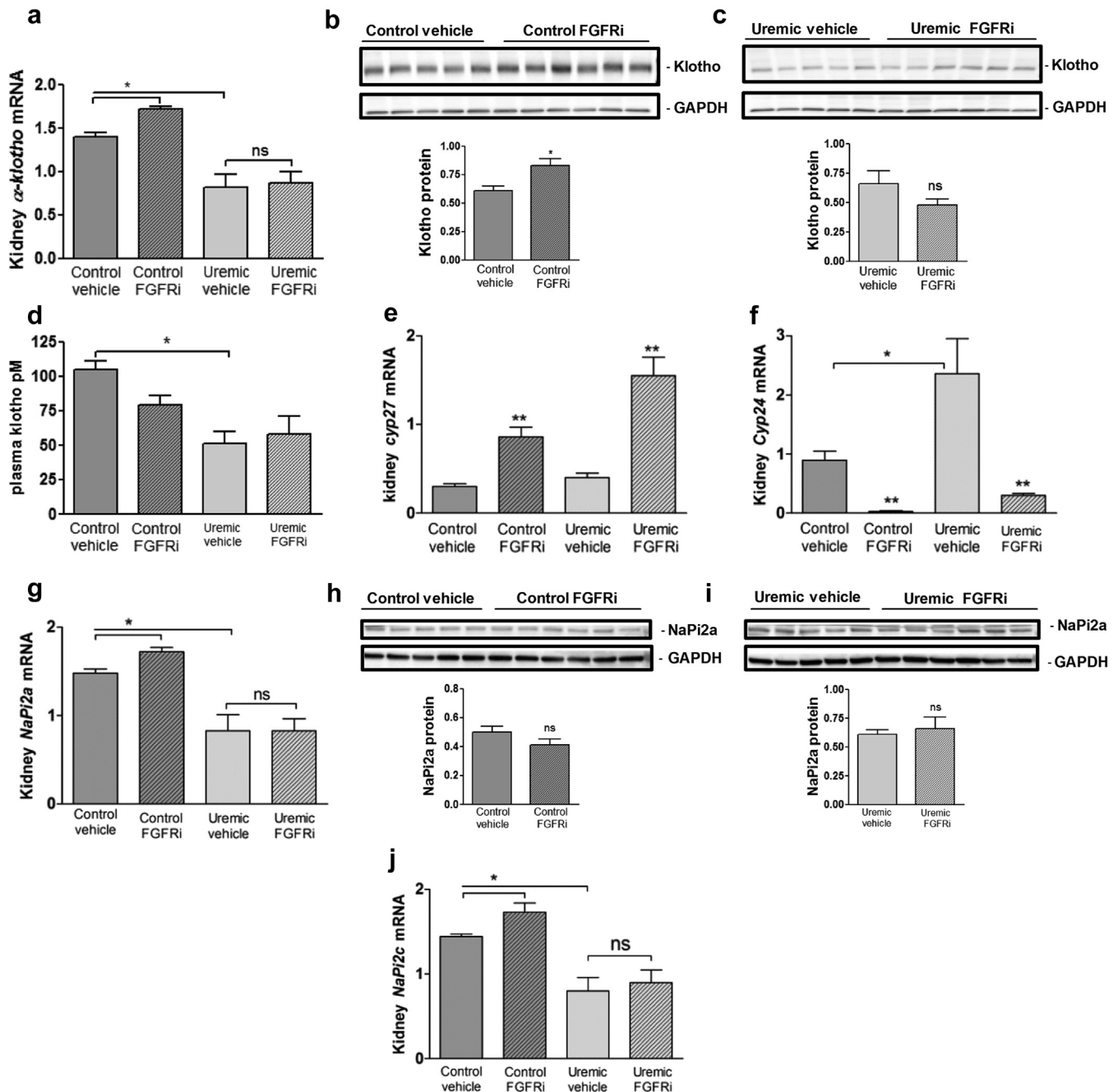
on the kidney's expression of FGF23, demonstrating again that the kidney's expression of FGF23 is not regulated in a manner similar to the corresponding expression in bone.

It was shown that FGFRi, despite stable  $Ca^{2+}$  and P, triggered a large increase in PTH in both control and uremic rats. This could be explained by abolition of a suppressive tonus of FGF23 on the parathyroids,<sup>36</sup> although this would be in contrast to the notion of parathyroid resistance to FGF23 in uremia.<sup>37–39</sup> Our results demonstrate a relative renal resistance to FGF23 in uremia, as FGFRi did not increase  $\alpha$ Klotho, *NaPi2a*, and *NaPi2c* expression in uremic rats in contrast to the increase seen in normal rats. FGFR1 and perhaps FGFR4 have key roles in FGF23 bioactivity in the kidney.<sup>14</sup> Thus, the lack of response of *NaPi2a* and *NaPi2c* expression to FGFRi in uremic rats might be due to the fact that FGFR1 expression was already decreased in advance, as shown in our results.

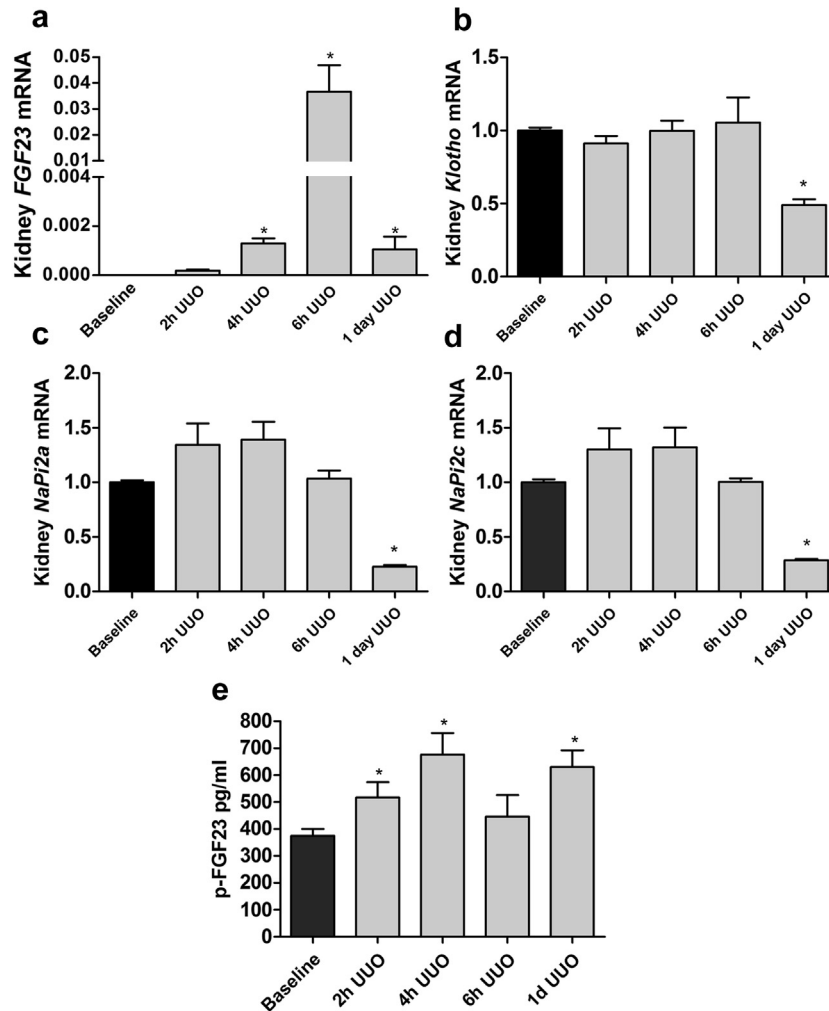
The demonstration in the present study of an increased expression of  $\alpha$ Klotho in the kidney of FGFRi rats is novel. In another investigation of transgenic mice overexpressing FGF23, renal  $\alpha$ Klotho was the most decreased transcript, which together with our results indicates an impact of the FGF23-FGFR pathway on Klotho regulation in the kidney.<sup>40</sup> This is in accordance to conditions described in the parathyroid, where FGF23 was found to inhibit  $\alpha$ Klotho mRNA.<sup>36</sup>

A high phosphate load stimulated FGF23 expression in the injured kidney, plausibly an adaptive mechanism in response to higher phosphate filtration in the functioning nephrons. We were, however, unable to differentiate between a possible adaptive response and a cytotoxic effect of phosphate overload, because the uremic HP rats suffered from more severe uremia with significant downregulation of the FGF23 receptor complex and target genes compared with uremic SD rats. Present results clearly showed expression of the FGF23 gene





**Figure 6 | Effect of fibroblast growth factor receptor inhibition (FGFRi) on the expression of fibroblast growth factor 23 (FGF23) coreceptor Klotho and FGF23 target genes in kidneys of normal and uremic rats.** The FGFR inhibitor (FGFRi) PD173074 or the vehicle was administered to control and uremic rats. **(a)** The uremic rats had lower expression of  $\alpha$ Klotho versus control rats ( $*P < 0.05$ ). FGFRi increased the expression levels of  $\alpha$ Klotho in normal rats ( $*P < 0.05$ ) but had no effect on  $\alpha$ Klotho levels in uremic rats. **(b)** Western blot showing kidney Klotho protein expression in control rats given vehicle or FGFRi. A quantitative analysis of the Western blot showed that FGFRi increased the expression levels of Klotho protein in normal rats ( $n = 5$  vehicle,  $n = 6$  FGFRi;  $*P < 0.05$ ). **(c)** Western blot showing kidney Klotho protein expression in uremic rats given vehicle or FGFRi. A quantitative analysis showed that FGFRi had no effect on levels of Klotho protein in uremic rats ( $n = 5$  vehicle,  $n = 6$  FGFRi). **(d)** Plasma Klotho levels were significantly lower ( $*P < 0.05$ ) in uremic rats but were not affected by FGFRi in these short-duration experiments. **(e,f)** FGFRi upregulated *Cyp27b1* gene expression in both control and uremic rats ( $**P < 0.01$ ), whereas *Cyp24a1* gene expression was significantly downregulated in both uremic and control rat kidneys ( $*P < 0.05$ ;  $**P < 0.01$ ). **(g,j)** The sodium-dependent phosphate cotransporter *NaPi2a* and *NaPi2c* genes were downregulated in uremic rats compared with the control group ( $*P < 0.05$ ). FGFRi increased the expression levels of *NaPi2a* and *NaPi2c* in normal rats but had no effect on these genes in uremic rats. **(h,i)** In contrast to the gene expression, the protein levels in both control and uremic rat kidneys were not affected by FGFRi. All mRNA levels are shown as the ratio to the mean of reference genes *B2M*, *Arbp*, and *EEF1A1*. Control vehicle and FGFRi  $n = 6$ , uremic vehicle  $n = 8$ , and uremic FGFRi  $n = 10$ . To optimize viewing of this image, please see the online version of this article at [www.kidney-international.org](http://www.kidney-international.org).

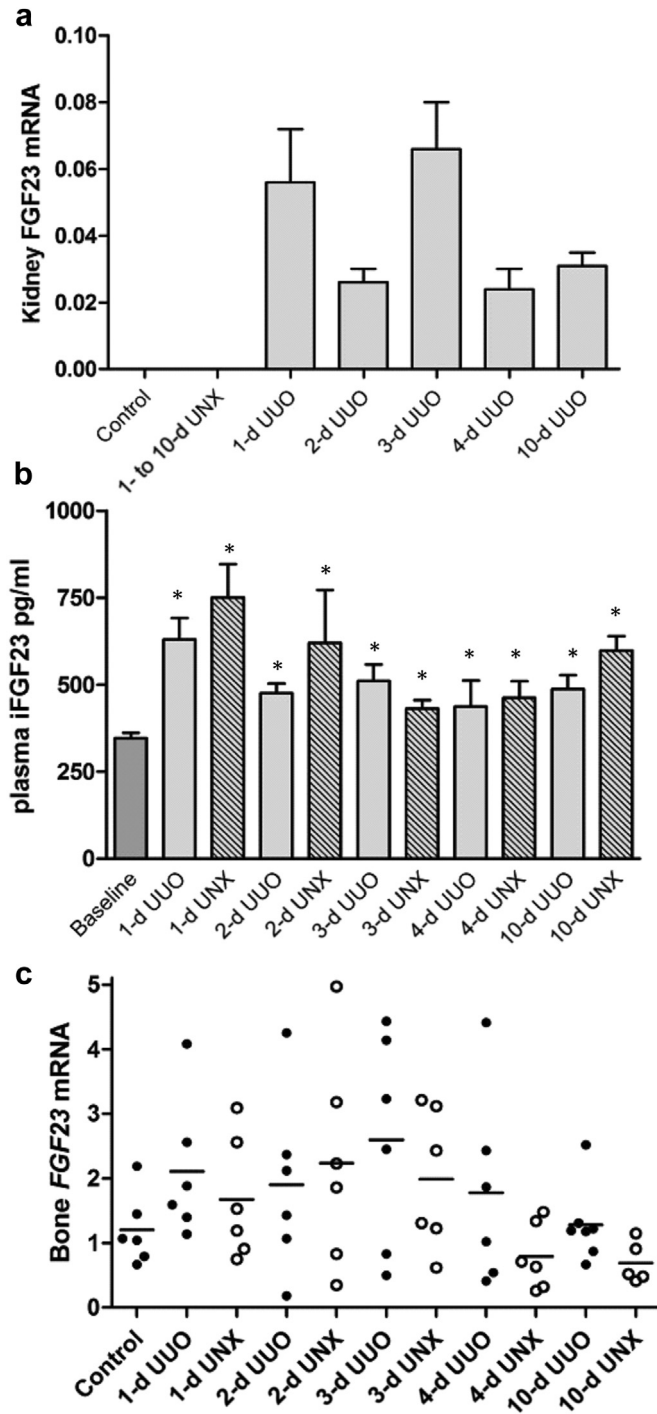


**Figure 7 | Expression of kidney *FGF23*,  $\alpha$ *Klotho*, *NaPi2a*, and *NaPi2c* genes and plasma fibroblast growth factor 23 (FGF23) levels in early obstructive nephropathy.** A unilateral ureter obstruction (UUO) model was used. (a) Normal kidney tissue had no detectable *FGF23* gene expression. Minor *FGF23* expression was detected after 2-hour (h) UUO, and significant levels were detected at 4 h of UUO, with a further increase at 6 h (\* $P < 0.001$ ). (b–d) The expressions of kidney  $\alpha$ *Klotho*, *NaPi2a*, and *NaPi2c* genes remained unchanged at 2, 4, and 6 h of UUO but decreased significantly (\* $P < 0.01$ ) after 24 h of obstruction. (e) Plasma FGF23 increased significantly (\* $P < 0.05$ ) after 2-h UUO to the level we have previously shown in a single-kidney rat model.<sup>10</sup> Kidney *FGF23* mRNA is shown as the ratio to reference genes *actin*, *B2M*, and *TBP*. Kidney  $\alpha$ *Klotho*, *NaPi2a*, and *NaPi2c* are shown as the ratio to baseline (set to 1);  $n = 6$  in each group.

early in the obstructive nephropathy model, but this increase was not associated with any change in NaPi2a and NaPi2c, and therefore these data do not point toward a direct effect of renal FGF23 on phosphate excretion. Because FGF23-expressing cells were located in the interstitium, this further supports no direct relation to FGF23-dependent enzyme and transporters. Furthermore, regulators of renal phosphate excretion and calcitriol homeostasis such as PTH, FGF23, and calcitriol did not regulate renal FGF23 expression. Collectively, these results do not support the notion of renal FGF23 having a direct effect on phosphate transporters or calcitriol regulating enzymes. The kidney's expression level of *FGF23* correlated with the degree of fibrosis based on expression of periostin,<sup>41,42</sup> and correlated negatively with the kidney protecting factors *BMP7* and  $\alpha$ *Klotho*.<sup>43–45</sup> It therefore seems likely that the kidney's expression of *FGF23* increases with progression of renal fibrosis, but whether FGF23 plays a role

in regeneration or in a profibrotic process remains to be established.

Induction of *FGF23* expression might take place in other injured organs as well as in tumors.<sup>46</sup> Ischemia of the heart resulted in an increased expression of FGF23 in cardiomyocytes<sup>47</sup> and cardiac fibroblast cells.<sup>48</sup> Expression of *FGF23* in injured liver tissue coincided with higher plasma FGF23.<sup>49</sup> FGF23 is expressed in both heart and liver during embryogenesis up to week 8.<sup>50</sup> FGF9 and FGF20 play an important role in nephrogenesis,<sup>50,51</sup> whereas FGF23 expression was not found in the developing zebrafish kidney.<sup>52</sup> FGF23 belongs to the family of fibroblast growth factors, in which the majority of proteins regulate embryogenesis, growth, and angiogenesis and play an important role in organ regeneration and repair.<sup>53</sup> Whether kidney-derived FGF23 has an autocrine or paracrine function in the renal repair system merits further study. Inflammatory activation of macrophages



**Figure 8 | Expression of fibroblast growth factor 23 (FGF23) in obstructive nephropathy.** (a) No kidney *FGF23* mRNA was detected in the normal control kidney, in the contralateral kidney (data not shown) in the model of unilateral ureter obstruction (UUO), or in the remaining kidney of unilaterally nephrectomized (UNX) rats day 1 to day 10. In the obstructed kidney, *FGF23* mRNA was detected at day 1 of ureter obstruction. (b) The plasma levels of intact FGF23 (iFGF23) were significantly increased at day 1 in UUO rats and remained at a higher level. A similar significant increase in plasma iFGF23 was found in the control model of UNX rats (\**P* < 0.05 vs. baseline). (c) Bone *FGF23* mRNA levels were similar among all groups. This indicates the importance of renal extraction of FGF23 on the plasma levels. Kidney *FGF23* mRNA expression levels are shown as the ratio to the mean of reference genes *actin*, *B2M*, and *TBP*. Bone *FGF23* mRNA expression

and bone marrow dendritic cells induce expression of FGF23, and FGF23 has been shown to stimulate expression of tumor necrosis factor alpha in a macrophage cell line.<sup>54</sup> The mechanisms inducing FGF23 expression and its function in these cells and injured tissues are unknown. Even though the phosphaturic and 1,25vitD regulatory functions of FGF23 are clearly established, additional functions of the protein in the inflammatory process are possible.<sup>54–56</sup>

In conclusion, *FGF23* mRNA is not expressed in the normal kidney but is rapidly induced in injured kidneys. The regulation of kidney *FGF23* mRNA expression is different from that of its corresponding expression in bone. Kidney-derived FGF23 is not generating the high FGF23 plasma levels in uremia.

**METHODS**

**Animals**

Adult male Wistar rats (Taconic A/S, Ejby, Denmark) were used in this study. They were housed in a temperature-controlled environment with a 12-hour light-dark cycle and free access to water and food. The standard diet contained 0.9% Ca, 0.7% P, and 600 IU vitamin D3 per kg food. The HP diet contained 0.9% Ca, 1.4% P, and 600 IU vitamin D3 per kg food (Altromin, Lage, Germany). The biochemistry of rats given calcitriol and HP has been described previously.<sup>37</sup> In long-term studies, all uremic rats were fed an HP diet.

**Study approval**

The experimental protocols were approved by the Danish Animal Experiments Inspectorate (2012-DY-2934-00023/BES) and performed in accordance with national guidelines.

**Experimental protocols**

CKD was induced by 1-step 5/6 nephrectomy.<sup>5,57</sup> Duration of uremia was 8 weeks (renal artery and vein sampling were performed after 14 weeks of uremia). UUO was performed by ligation of the left ureter. UNX was performed by ligation of the renal vessel and removal of the kidney.<sup>5</sup> A group of rats had their parathyroid glands removed by excision under stereomicroscope.<sup>9,35,58</sup> Rats were anesthetized with fentanyl/fluanisone and midazolam for the surgical procedures and received carprofen as pain relief. Pentobarbital was used at killing.<sup>5</sup>

The renal artery was punctured close to its junction with the aorta. The renal vein was punctured after prior ligation of the adrenal and testicular veins and clamping of the vena cava inferior.<sup>10</sup> The aorta was punctured 15 minutes after UNX or NX.

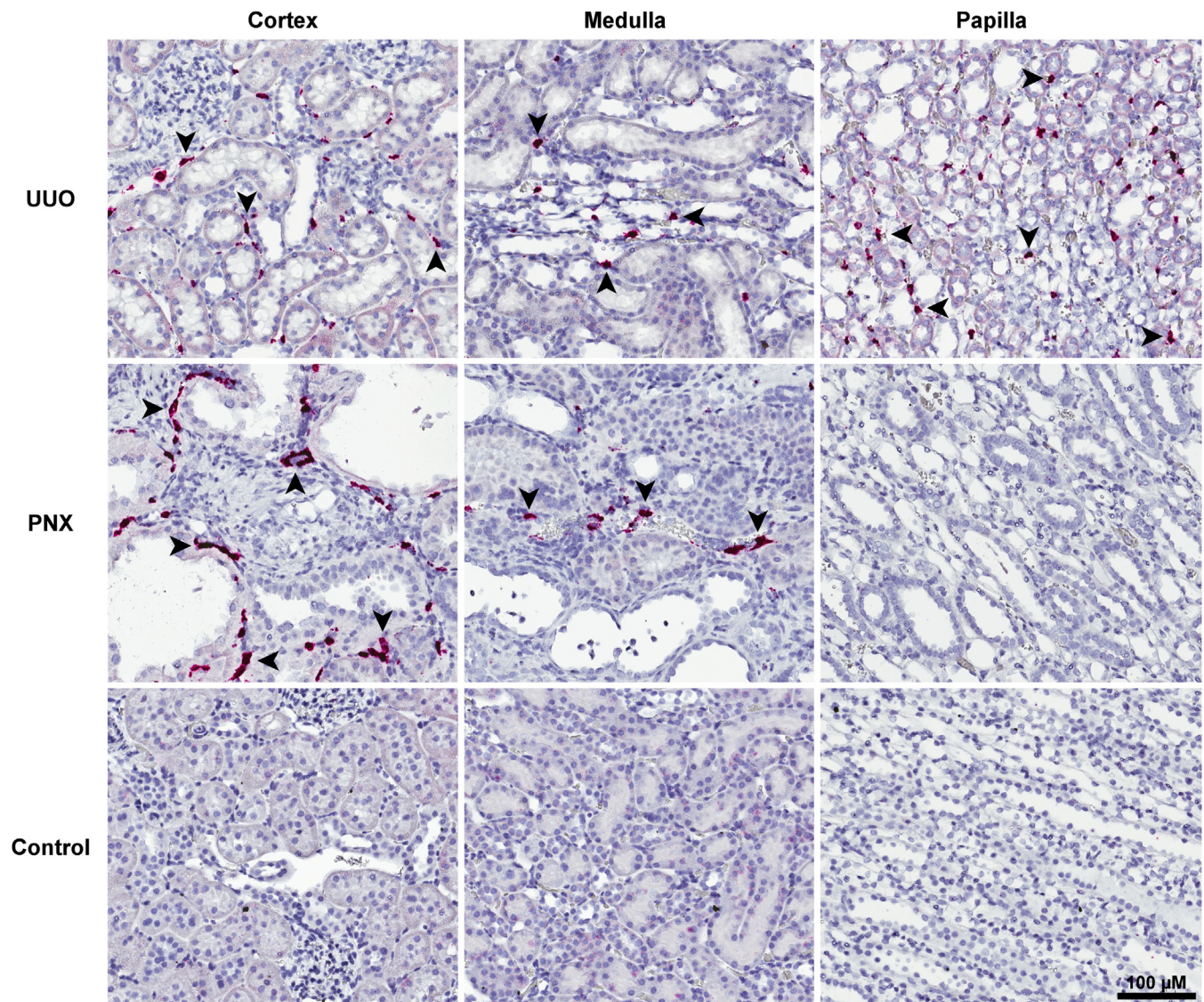
A single 200-ng dose of calcitriol (Leo Pharma, Ballerup, Denmark) was given i.p., and the kidney was harvested after 24 hours.<sup>37</sup> The impact of FGFR signaling was studied using a single 20-mg dose of the pan-FGFR inhibitor PD173074 (LC Laboratories, Woburn, MA) dissolved in 200 µl 96% ethanol administered by oral gavage.

**Biochemistry**

Plasma Ca<sup>2+</sup> was measured at actual pH by ABL 505 (Radiometer, Brønshøj, Denmark). Plasma P, creatinine, and urea were analyzed by

← levels are shown as the ratio to the mean of reference genes *B2M* and *EEF1A1* (in all groups, 1- to 4-day UUO *n* = 6, 10-day UUO *n* = 7, and 10-day UNX *n* = 5).





**Figure 9 | Fibroblast growth factor 23 (FGF23) *in situ* hybridization of kidney tissue from acute obstructed kidney, long-term uremic rats, and control rats.** The figure shows representative images from cortex, medulla, and papilla of the kidney. No FGF23 expression was detected in any of the kidneys of control rats. FGF23 mRNA (red dots, arrowheads) was highly expressed in the injured kidney. It was exclusively detected in the interstitial space. In the obstructed kidneys of unilateral ureteral obstruction (UUO) rats, FGF23 mRNA was found in the cortex, medulla, and papilla at 6 hours after ureter obstruction. A similar interstitial distribution was observed in the cortex and medulla of the kidney rudiments of all 5/6 nephrectomized (PNX) uremic rats, and no FGF23 mRNA expression was observed in the papilla. No FGF23 mRNA signal was seen in the tubuli or in the glomeruli ( $n = 3$  in each group). To optimize viewing of this image, please see the online version of this article at [www.kidney-international.org](http://www.kidney-international.org).

Vitros 250 (Ortho-Clinical Diagnostics, Raritan, NJ). PTH levels were measured using rat bioactive intact PTH enzyme-linked immunosorbent assay (Immutopics, San Diego, CA). FGF23 was measured using an intact FGF23 enzyme-linked immunosorbent assay (Kainos Laboratories, Tokyo, Japan).<sup>59,60</sup> Klotho plasma levels were measured by the O'Brien Kidney Research Core Centre (University of Texas Southwestern, Dallas, TX) using a synthetic Klotho antibody.<sup>61</sup>

#### Western blot

Protein was extracted using T-PER (Thermo Fisher Scientific, Waltham, MA), and 50  $\mu$ g of it was loaded on stain-free precast Bio-Rad 4% to 15% gels, transferred onto nitrocellulose Bio-Rad (Hercules, CA) membrane, and blocked in 5% bovine serum albumin in Tris-buffered saline with Tween 20 0.1% (Bio-Rad). Primary

FGF23 and Klotho antibody (AB56326, AB154163; Abcam, Cambridge, UK) were diluted in 3% bovine serum albumin 1:1000. NaPi2a (NBP2-13328; Novus Biologicals, Littleton, CO) 1:250 and glyceraldehyde-3-phosphate dehydrogenase antibody (MAB374; Merck Millipore, Billerica, MA) were diluted in milk 1:500. Secondary antibodies were anti-goat, anti-rabbit and anti-mouse (P0160, P0448, and P0447; Dako, Santa Clara, CA). Recombinant FGF23 (PeproTech, Rocky Hill, NJ) was used as a positive control. Quantitative analysis was performed using AlphaEaseFC v.6 (Alpha Innotech, San Leandro, CA).

#### Quantitative polymerase chain reaction

The kidney and femur (after removal of bone marrow) total RNA were extracted using the EZNA RNA isolation kit (Omega Bio-tek,



Norcross, GA). Synthesis of cDNA was performed using Superscript III (Invitrogen Corp, Waltham, MA). Roche LightCycler 480 (Roche, Basel, Switzerland) was used with a temperature profile of 94°C for 2 minutes, 45 cycles of 94°C for 30 seconds, 59°C for 45 seconds, and 72°C for 90 seconds. The mRNA levels were normalized to the mean of reference genes. Reference gene stability was confirmed using geNorm.<sup>62</sup> Primers are listed in [Supplementary Table S2](#).

### In situ hybridization

Kidneys were fixed in 10% neutral buffered formalin and embedded in blocks of paraffin. *In situ* hybridization was carried out on 5- $\mu$ m thick kidney sections using the RNAscope 2.5 HD RED assay (Advanced Cell Diagnostics, Hayward, CA) according to the manufacturer's instructions. FGF23 was detected with a rat-specific probe against the sequence 9-652 of the mRNA (catalog no. 484501, accession no. NM\_130754.1). A probe against the housekeeping gene peptidylprolyl isomerase B (catalog no. 313921, accession no. NM\_022536.2) was used as a positive control to verify mRNA quality and assay procedures. A probe targeting the bacterial gene *dapB* (catalog no. 310043, accession no. EF191515) was used as a negative control.

### Statistical analyses

Data are expressed as means  $\pm$  SEM or range. Statistical significance was tested using a 2-tailed *t*-test for data with normal distribution and the Mann-Whitney U test as a nonparametric test. Linear regression and curve fitting was calculated in GraphPad Prism 4.0. The significance level was set at  $P \leq 0.05$ .

### DISCLOSURE

All the authors declared no competing interests.

### ACKNOWLEDGMENTS

The authors would like to thank technician Nina Sejthen. The O'Brien Kidney Research Core Center at the University of Texas Southwestern (P30DK079328) is acknowledged for measuring plasma Klotho. This research was supported by grants from the Lundbeck Foundation (grant number R126-2012-12320), the Kirsten and Freddy Johansen Foundation, the University of Copenhagen, the Waagen Foundation, and the Bjoernow Foundation.

### SUPPLEMENTARY MATERIAL

**Table S1.** Plasma calcium<sup>2+</sup> and phosphate levels at baseline and 5 hours after administration of FGF receptor inhibitor (FGFRi) or vehicle in normal and uremic rats.

**Table S2.** Primers.

**Figure S1.** Expression of  $\alpha$ Klotho mRNA in kidneys of uremic and parathyroidectomized-uremic (PTX-uremic) rats compared with control rats. The expression of  $\alpha$ Klotho was significantly reduced by one-half in uremic rats ( $*P < 0.05$ ). Similar levels of  $\alpha$ Klotho mRNA were found in uremic and PTX-uremic rats, despite a significant difference in circulating plasma levels of intact fibroblast growth factor 23 (FGF23) ([Table 1](#)). Furthermore, this reduction of  $\alpha$ Klotho expression in the kidney rudiment of the 5/6 nephrectomy model was found despite increased expression of *Cyp27b1* ([Figure 2](#)).  $\alpha$ Klotho mRNA is normalized to the mean of reference genes *actin*, *B2M*, *Arbp*, *EEF1A1*, and *GAPDH*, and is shown as the relative expression to control group. Control and uremic rats  $n = 6$ ; PTX-uremic rats  $n = 3$ .

**Figure S2.** The expression levels of kidney fibroblast growth factor 23 (FGF23) mRNA are plotted against the expression levels of renal protective factors  $\alpha$ Klotho and BMP7, and of fibrosis markers periostin

and TGF1 $\beta$ . (**A,B**) The kidneys' FGF23 expression levels were negatively associated with the protective markers  $\alpha$ Klotho and BMP7. (**C,D**) The kidneys' FGF23 expression levels were positively associated with the fibrosis markers periostin and TGF1 $\beta$ . The curve is fitted to the data. All uremic rats treated with calcitriol or vehicle and fed a standard or high-phosphate diet were pooled in the figure ( $n = 18$ ).

**Figure S3.** Linear correlations of kidney fibroblast growth factor 23 (FGF23) mRNA expression and gene expression of renal protective markers  $\alpha$ Klotho and BMP7 and the fibrosis marker periostin in uremic rats. (**A,B**) The kidneys' FGF23 expression was significantly negatively correlated to  $\alpha$ Klotho ( $P < 0.01$ ) and BMP7 ( $P < 0.05$ ). (**C**) The kidneys' FGF23 expression was positively correlated to the fibrotic marker periostin ( $P < 0.05$ ). Uremic fibroblast growth factor receptor inhibitor and uremic vehicle were pooled in the analysis ( $n = 18$ ).

**Figure S4.** *In situ* hybridization with probes against fibroblast growth factor 23 (FGF23) and the bacterial gene *dapB* (negative control) on adjacent kidney sections. The panel shows representative images from the cortical region of the obstructed kidney of unilateral ureteral obstruction (UUO) rats and the kidney rudiment of 5/6 nephrectomized uremic rats (PNX). FGF23 mRNA (arrowheads) was located in between tubuli structures and sometimes lining the luminal side of vessels. No *in situ* hybridization signal was detected with the *dapB* probe, indicating that the assay was specific.

**Figure S5.** Fibroblast growth factor 23 (FGF23) immunostaining with MyBioSource (San Diego, CA) MBS854462 antibody. Immunostaining by the MyBioSource MBS854462 rabbit polyclonal antibody diluted 1:300 on kidney tissue from a normal control rat and the obstructed kidney from unilateral ureteral obstruction (UUO) rats, after 6 hours of ureter obstruction. (**A–C**) Proteinase K pre-treatment was used. (**A**) No immunostaining was observed in kidney tissue obtained from normal control rats. (**B**) No immunostaining was observed in the cortex, (**C**) while immunoreactivity was observed in the collecting ducts of the medulla in the obstructed kidney. However, when using a citrate buffer and pH 6 as pre-treatment, only weak immunoreactivity was observed in the distal tubuli (no brush border) in (**D**) the cortex and in (**E**) the endothelium of vessel, (**F**) and no immunoreactivity was observed in collecting ducts of the medulla. Immunostaining with the Santa Cruz Biotechnology (Dallas, TX) sc-50291 rabbit polyclonal antibody and Abcam (Cambridge, UK) ab56326 goat polyclonal antibody did not result in any specific immunoreactivity (data not shown). The observed immunostaining might therefore be considered as a potential fault.

Supplementary material is linked to the online version of the paper at [www.kidney-international.org](http://www.kidney-international.org).

### REFERENCES

- Isakova T, Wahl P, Vargas GS, et al. Fibroblast growth factor 23 is elevated before parathyroid hormone and phosphate in chronic kidney disease. *Kidney Int.* 2011;79:1370–1378.
- Larsson T, Nisbeth U, Ljunggren O, et al. Circulating concentration of FGF-23 increases as renal function declines in patients with chronic kidney disease, but does not change in response to variation in phosphate intake in healthy volunteers. *Kidney Int.* 2003;64:2272–2279.
- Evenepoel P, Meijers B, Viaene L, et al. Fibroblast growth factor-23 in early chronic kidney disease: additional support in favor of a phosphate-centric paradigm for the pathogenesis of secondary hyperparathyroidism. *Clin J Am Soc Nephrol.* 2010;5:1268–1276.
- Gutierrez OM, Mannstadt M, Isakova T, et al. Fibroblast growth factor 23 and mortality among patients undergoing hemodialysis. *N Engl J Med.* 2008;359:584–592.
- Rukov JL, Gravesen E, Mace ML, et al. Effect of chronic uremia on the transcriptional profile of the calcified aorta analysed by RNA-sequencing. *Am J Physiol Renal Physiol.* 2016;310:F477–F491.



6. Kendrick J, Cheung AK, Kaufman JS, et al. FGF-23 associates with death, cardiovascular events, and initiation of chronic dialysis. *J Am Soc Nephrol*. 2011;22:1913–1922.
7. Seiler S, Reichart B, Roth D, et al. FGF-23 and future cardiovascular events in patients with chronic kidney disease before initiation of dialysis treatment. *Nephrol Dial Transplant*. 2010;25:3983–3989.
8. Wolf M. Mineral (Mal)Adaptation to Kidney Disease-Young Investigator Award Address: American Society of Nephrology Kidney Week 2014. *Clin J Am Soc Nephrol*. 2015;10:1875–1885.
9. Gravesen E, Mace ML, Hofman-Bang J, et al. Circulating FGF23 levels in response to acute changes in plasma Ca(2+). *Calcif Tissue Int*. 2014;95:46–53.
10. Mace ML, Gravesen E, Hofman-Bang J, et al. Key role of the kidney in the regulation of fibroblast growth factor 23. *Kidney Int*. 2015;88:1304–1313.
11. Martin A, David V, Quarles LD. Regulation and function of the FGF23/klotho endocrine pathways. *Physiol Rev*. 2012;92:131–155.
12. Spichtig D, Zhang H, Mohebbi N, et al. Renal expression of FGF23 and peripheral resistance to elevated FGF23 in rodent models of polycystic kidney disease. *Kidney Int*. 2014;85:1340–1350.
13. Kovacs CP, Quarles LD. FGF23 from bench to bedside. *Am J Physiol Renal Physiol*. 2016;310:F1168–F1174.
14. Gattineni J, Alphonse P, Zhang Q, et al. Regulation of renal phosphate transport by FGF23 is mediated by FGFR1 and FGFR4. *Am J Physiol Renal Physiol*. 2014;306:F351–F358.
15. Shimada T, Urakawa I, Yamazaki Y, et al. FGF-23 transgenic mice demonstrate hypophosphatemic rickets with reduced expression of sodium phosphate cotransporter type IIa. *Biochem Biophys Res Commun*. 2004;314:409–414.
16. Yan X, Yokote H, Jing X, et al. Fibroblast growth factor 23 reduces expression of type IIa Na<sup>+</sup>/Pi co-transporter by signaling through a receptor functionally distinct from the known FGFRs in opossum kidney cells. *Genes Cells*. 2005;10:489–502.
17. Gattineni J, Bates C, Twombly K, et al. FGF23 decreases renal NaPi-2a and NaPi-2c expression and induces hypophosphatemia in vivo predominantly via FGF receptor 1. *Am J Physiol Renal Physiol*. 2009;297:F282–F291.
18. Shimada T, Muto T, Urakawa I, et al. Mutant FGF-23 responsible for autosomal dominant hypophosphatemic rickets is resistant to proteolytic cleavage and causes hypophosphatemia in vivo. *Endocrinology*. 2002;143:3179–3182.
19. Shimada T, Kakitani M, Yamazaki Y, et al. Targeted ablation of Fgf23 demonstrates an essential physiological role of FGF23 in phosphate and vitamin D metabolism. *J Clin Invest*. 2004;113:561–568.
20. Liu S, Tang W, Zhou J, et al. Fibroblast growth factor 23 is a counter-regulatory phosphaturic hormone for vitamin D. *J Am Soc Nephrol*. 2006;17:1305–1315.
21. Hasegawa H, Nagano N, Urakawa I, et al. Direct evidence for a causative role of FGF23 in the abnormal renal phosphate handling and vitamin D metabolism in rats with early-stage chronic kidney disease. *Kidney Int*. 2010;78:975–980.
22. Saji F, Shigematsu T, Sakaguchi T, et al. Fibroblast growth factor 23 production in bone is directly regulated by 1[alpha],25-dihydroxyvitamin D, but not PTH. *Am J Physiol Renal Physiol*. 2010;299:F1212–F1217.
23. Lavi-Moshayoff V, Wasserman G, Meir T, et al. PTH increases FGF23 gene expression and mediates the high-FGF23 levels of experimental kidney failure: a bone parathyroid feedback loop. *Am J Physiol Renal Physiol*. 2010;299:F882–F889.
24. Martin A, Liu S, David V, et al. Bone proteins PHEX and DMP1 regulate fibroblastic growth factor Fgf23 expression in osteocytes through a common pathway involving FGF receptor (FGFR) signaling. *FASEB J*. 2011;25:2551–2562.
25. White KE, Cabral JM, Davis SI, et al. Mutations that cause osteoglophonic dysplasia define novel roles for FGFR1 in bone elongation. *Am J Hum Genet*. 2005;76:361–367.
26. Wu AL, Feng B, Chen MZ, et al. Antibody-mediated activation of FGFR1 induces FGF23 production and hypophosphatemia. *PLoS One*. 2013;8:e57322.
27. Wöhrle S, Bonny O, Beluch N, et al. FGF receptors control vitamin D and phosphate homeostasis by mediating renal FGF-23 signaling and regulating FGF-23 expression in bone. *J Bone Miner Res*. 2011;26:2486–2497.
28. Mirams M, Robinson BG, Mason RS, et al. Bone as a source of FGF23: regulation by phosphate? *Bone*. 2004;35:1192–1199.
29. Yoshiko Y, Wang H, Minamizaki T, et al. Mineralized tissue cells are a principal source of FGF23. *Bone*. 2007;40:1565–1573.
30. Ubaidus S, Li M, Sultana S, et al. FGF23 is mainly synthesized by osteocytes in the regularly distributed osteocytic lacunar canalicular system established after physiological bone remodeling. *J Electron Microscop* (Tokyo). 2009;58:381–392.
31. Clinkenbeard EL, Cass TA, Ni P, et al. Conditional deletion of murine FGF23: interruption of the normal skeletal responses to phosphate challenge and rescue of genetic hypophosphatemia. *J Bone Miner Res*. 2016;31:1247–1257.
32. Erben RG. Update on FGF23 and Klotho signaling. *Mol Cell Endocrinol*. 2016;432:56–65.
33. Zanchi C, Locatelli M, Benigni A, et al. Renal expression of FGF23 in progressive renal disease of diabetes and the effect of ACE inhibitor. *PLoS One*. 2013;8:e70775.
34. Lewin E, Wang W, Olgaard K. Reversibility of experimental secondary hyperparathyroidism. *Kidney Int*. 1997;52:1232–1241.
35. Lewin E, Wang W, Olgaard K. Rapid recovery of plasma ionized calcium after acute induction of hypocalcaemia in parathyroidectomized and nephrectomized rats. *Nephrol Dial Transplant*. 1999;14:604–609.
36. Ben-Dov IZ, Galitzer H, Lavi-Moshayoff V, et al. The parathyroid is a target organ for FGF23 in rats. *J Clin Invest*. 2007;117:4003–4008.
37. Hofman-Bang J, Martuseviciene G, Santini MA, et al. Increased parathyroid expression of klotho in uremic rats. *Kidney Int*. 2010;78:1119–1127.
38. Galitzer H, Ben-Dov IZ, Silver J, et al. Parathyroid cell resistance to fibroblast growth factor 23 in secondary hyperparathyroidism of chronic kidney disease. *Kidney Int*. 2010;77:211–218.
39. Komaba H, Fukagawa M. FGF23-parathyroid interaction: implications in chronic kidney disease. *Kidney Int*. 2010;77:292–298.
40. Marsell R, Krajcsnik T, Goransson H, et al. Gene expression analysis of kidneys from transgenic mice expressing fibroblast growth factor-23. *Nephrol Dial Transplant*. 2008;23:827–833.
41. Kavvadas P, Dussaule JC, Chatziantoniou C. Searching novel diagnostic markers and targets for therapy of CKD. *Kidney Int Suppl* (2011). 2014;4:53–57.
42. Sen K, Lindenmeyer MT, Gaspert A, et al. Periostin is induced in glomerular injury and expressed de novo in interstitial renal fibrosis. *Am J Pathol*. 2011;179:1756–1767.
43. Haruna Y, Kashiwara N, Satoh M, et al. Amelioration of progressive renal injury by genetic manipulation of Klotho gene. *Proc Natl Acad Sci U S A*. 2007;104:2331–2336.
44. Manson SR, Niederhoff RA, Hruska KA, et al. Endogenous BMP-7 is a critical molecular determinant of the reversibility of obstruction-induced renal injuries. *Am J Physiol Renal Physiol*. 2011;301:F1293–F1302.
45. Sugiura H, Yoshida T, Shiohira S, et al. Reduced Klotho expression level in kidney aggravates renal interstitial fibrosis. *Am J Physiol Renal Physiol*. 2012;302:F1252–F1264.
46. Zhang Q, Doucet M, Tomlinson RE, et al. The hypoxia-inducible factor-1alpha activates ectopic production of fibroblast growth factor 23 in tumor-induced osteomalacia. *Bone Res*. 2016;4:16011.
47. Andrukova O, Slavic S, Odorfer KI, et al. Experimental myocardial infarction upregulates circulating fibroblast growth factor-23. *J Bone Miner Res*. 2015;30:1831–1839.
48. Hao H, Li X, Li Q, et al. FGF23 promotes myocardial fibrosis in mice through activation of beta-catenin. *Oncotarget*. 2016;7:64649–64664.
49. Prie D, Forand A, Francoz C, et al. Plasma fibroblast growth factor 23 concentration is increased and predicts mortality in patients on the liver-transplant waiting list. *PLoS One*. 2013;8:e66182.
50. Cormier S, Leroy C, Delezoide AL, et al. Expression of fibroblast growth factors 18 and 23 during human embryonic and fetal development. *Gene Expr Patterns*. 2005;5:569–573.
51. Walker KA, Sims-Lucas S, Bates CM. Fibroblast growth factor receptor signaling in kidney and lower urinary tract development. *Pediatr Nephrol*. 2015;31:885–895.
52. Mangos S, Amaral AP, Faul C, et al. Expression of FGF23 and alpha-klotho in developing embryonic tissues and adult kidney of the zebrafish, *Danio rerio*. *Nephrol Dial Transplant*. 2012;27:4314–4322.
53. El AE, Kosanovic D, Schermuly RT, et al. Role of fibroblast growth factors in organ regeneration and repair. *Semin Cell Dev Biol*. 2016;53:76–84.

54. Masuda Y, Ohta H, Morita Y, et al. Expression of FGF23 in activated dendritic cells and macrophages in response to immunological stimuli in mice. *Biol Pharm Bull.* 2015;38:687–693.
55. Han X, Li L, Yang J, et al. Counter-regulatory paracrine actions of FGF-23 and 1,25(OH)<sub>2</sub> D in macrophages. *FEBS Lett.* 2016;590:53–67.
56. Dai B, David V, Martin A, et al. A comparative transcriptome analysis identifying FGF23 regulated genes in the kidney of a mouse CKD model. *PLoS One.* 2012;7:e44161.
57. Lewin E, Colstrup H, Pless V, et al. A model of reversible uremia employing isogenic kidney transplantation in the rat. Reversibility of secondary hyperparathyroidism. *Scand J Urol Nephrol.* 1993;27:115–120.
58. Nordholm A, Mace ML, Gravesen E, et al. A potential kidney-bone axis involved in the rapid minute-to-minute regulation of plasma Ca<sup>2+</sup>. *BMC Nephrol.* 2015;16:29.
59. Huan J, Olgaard K, Nielsen LB, et al. Parathyroid hormone 7-84 induces hypocalcemia and inhibits the parathyroid hormone 1-84 secretory response to hypocalcemia in rats with intact parathyroid glands. *J Am Soc Nephrol.* 2006;17:1923–1930.
60. Gravesen E, Hofman-Bang J, Mace ML, et al. High dose intravenous iron, mineral homeostasis and intact FGF23 in normal and uremic rats. *BMC Nephrol.* 2013;14:281.
61. Barker SL, Pastor J, Carranza D, et al. The demonstration of alphaKlotho deficiency in human chronic kidney disease with a novel synthetic antibody. *Nephrol Dial Transplant.* 2015;30:223–233.
62. Vandesompele J, De PK, Pattyn F, et al. Accurate normalization of real-time quantitative RT-PCR data by geometric averaging of multiple internal control genes. *Genome Biol.* 2002;3:RESEARCH0034.