



## Generation of spinocerebellar ataxia type 2 patient-derived iPSC line H271

Marthaler, Adele Gabriele; Tubsuwan, Alisa; Schmid, Benjamin; Poulsen, Ulla B.; Hyttel, Poul; Nielsen, Jørgen Erik; Nielsen, Troels Tolstrup; Holst, Bjørn

*Published in:*  
Stem Cell Research

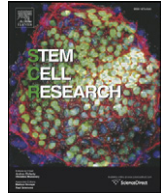
*DOI:*  
[10.1016/j.scr.2015.12.027](https://doi.org/10.1016/j.scr.2015.12.027)

*Publication date:*  
2016

*Document version*  
Publisher's PDF, also known as Version of record

*Document license:*  
[CC BY-NC-ND](https://creativecommons.org/licenses/by-nc-nd/4.0/)

*Citation for published version (APA):*  
Marthaler, A. G., Tubsuwan, A., Schmid, B., Poulsen, U. B., Hyttel, P., Nielsen, J. E., ... Holst, B. (2016). Generation of spinocerebellar ataxia type 2 patient-derived iPSC line H271. *Stem Cell Research*, 16(1), 159-161. <https://doi.org/10.1016/j.scr.2015.12.027>



Lab resource: Stem cell line

## Generation of spinocerebellar ataxia type 2 patient-derived iPSC line H271



Adele G. Marthaler<sup>a,b,\*</sup>, Alisa Tubsuban<sup>c,d,1</sup>, Benjamin Schmid<sup>c</sup>, Ulla B. Poulsen<sup>c</sup>, Poul Hyttel<sup>a</sup>, Jørgen E. Nielsen<sup>b</sup>, Troels T. Nielsen<sup>b</sup>, Bjørn Holst<sup>c</sup>

<sup>a</sup> Department of Clinical and Veterinary Animal Science, Copenhagen University, Grønnegårdsvej 7, 1870 Frederiksberg, C, Denmark

<sup>b</sup> Neurogenetic Research Laboratory, Danish Dementia Research Centre, Department of Neurology, Rigshospitalet, University of Copenhagen, Blegdamsvej 9, 2100 Copenhagen, Denmark

<sup>c</sup> Bioneer A/S, Kogle Allé 2, 2970 Hørsholm, Denmark

<sup>d</sup> Stem Cell Research Group, Institute of Molecular Biosciences, Mahidol University, Nakhon Pathom 73170, Thailand

### ARTICLE INFO

#### Article history:

Received 24 December 2015

Accepted 29 December 2015

Available online 3 January 2016

### ABSTRACT

Spinocerebellar ataxia type 2 (SCA2) is a neurodegenerative disease primarily affecting the cerebellum. Very little is known about the molecular mechanisms underlying the disease and, to date, no cure or treatment is available. Here, we demonstrate the generation of an induced pluripotent stem cell (iPSC) line of a SCA2 patient. The selected clone has been proven to be a *bona fide* iPSC line, which retains a normal karyotype. Due to its differentiation potential into neurons, this iPSC line will be a valuable tool in studying a disease-specific phenotype of SCA2.

© 2015 Published by Elsevier B.V. This is an open access article under the CC BY-NC-ND license (<http://creativecommons.org/licenses/by-nc-nd/4.0/>).

### 1. Resource table

Name of stem cell construct	H271 clone 1
Institution	University of Copenhagen and Bioneer A/S
Person who created resource	Adele G. Marthaler, Alisa Tubsuban
Contact person and email	Adele G. Marthaler, <a href="mailto:adele.marthaler@sund.ku.dk">adele.marthaler@sund.ku.dk</a>
Date archived/stock date	October 2014
Origin	Human skin fibroblasts
Type of resource	Induced pluripotent stem cells; derived from skin fibroblasts of patient with spinocerebellar ataxia type 2
Sub-type	Cell line
Key transcription factors	Episomal plasmids containing <i>hOCT4</i> , <i>hSOX2</i> , <i>hL-MYC</i> , <i>hKLF4</i> , <i>hLIN28</i> , and <i>shP53</i> (Addgene plasmids 27077, 27078 and 27080; Okita et al., 2011)
Authentication	Identity and purity of stem cell line confirmed (Fig. 1)
Link to related literature (direct URL links and full references)	
Information in public databases	

### 2. Resource details

Human skin fibroblasts, obtained by skin biopsy of a symptomatic, male 33-year-old spinocerebellar type 2 (SCA2) patient (anonymized as H271), were reprogrammed using episomal vectors carrying transcripts for human *OCT4*, *SOX2*, *KLF4*, *L-MYC*, *LIN28*, and small hairpin RNA for *TP53* (Okita et al., 2011). The clone described in this publication was termed H271 clone (c) 1. The absence of the reprogramming plasmids was confirmed by quantitative PCR (qPCR) on genomic DNA (Fig. 1A).

SCA2 is a dominantly inherited neurodegenerative disorder caused by a mutation in the *ATXN2* gene. Normal alleles contain 22 CAG repeats with CAA interruptions (also coding for glutamine), whereas disease causing alleles contain trinucleotide repeats of 33 or more CAGs (usually without any CAA interruptions) (Pulst et al., 1996). The repeat lengths for patient H271 were determined to be 22 and 44 by fragment length analysis (data not shown) and confirmed to be present also in iPSC line H271 c1 by sequencing both alleles individually (Fig. 1B).

Furthermore, the expression of key pluripotency genes was observed both on RNA, as well as protein level, as demonstrated by qRT-PCR analysis and immunocytochemistry, respectively (Fig. 1C and D). Additionally, the cells had the capacity to form derivatives of all three germ layers upon embryoid body differentiation (Fig. 1E). Taken together, this validates the true pluripotent potential of the generated iPSC line.

### 3. Materials and methods

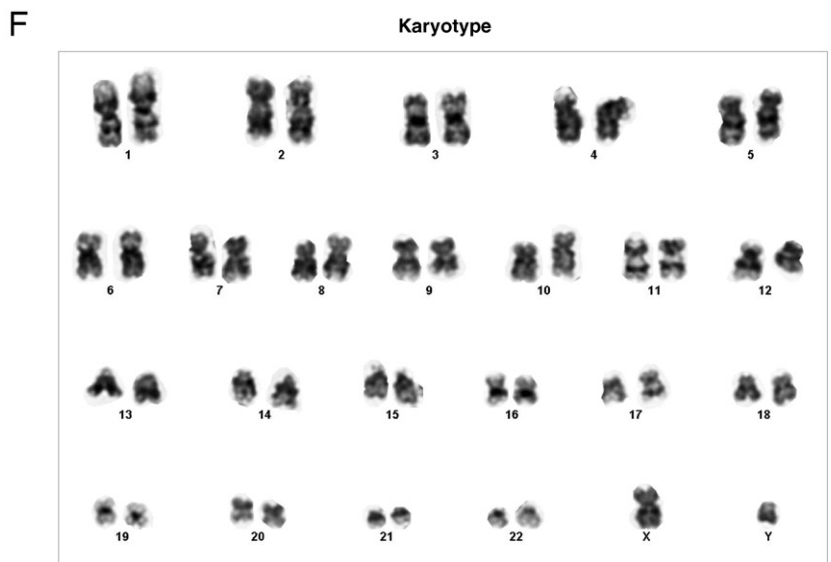
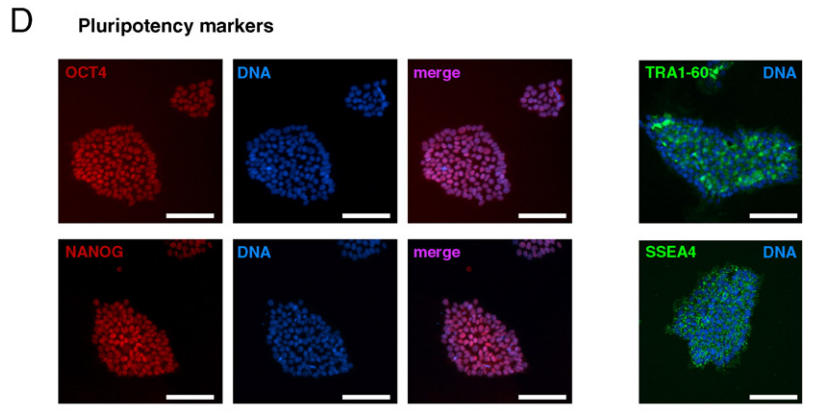
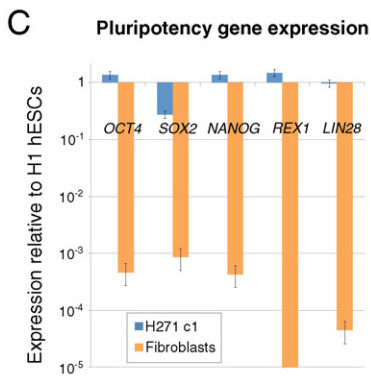
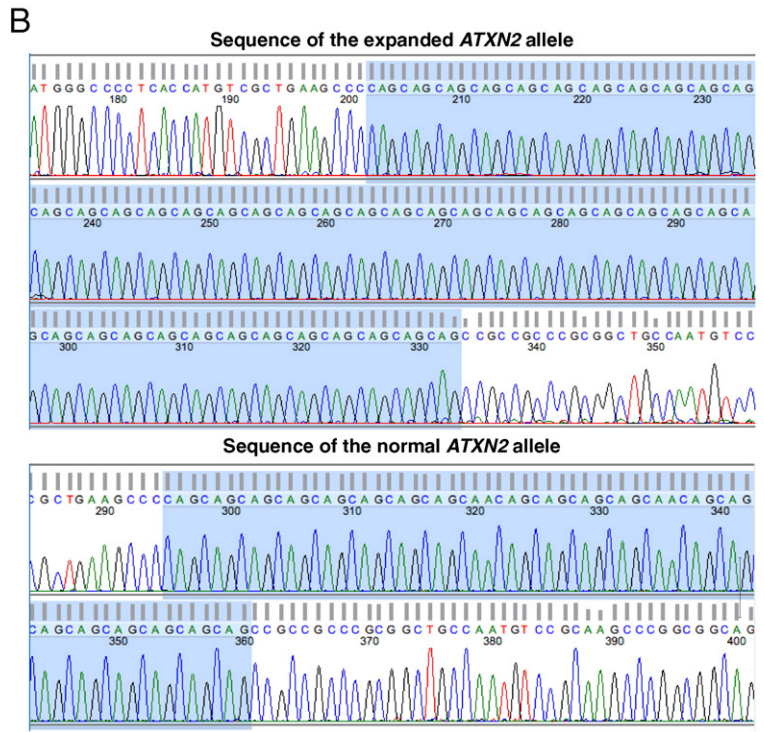
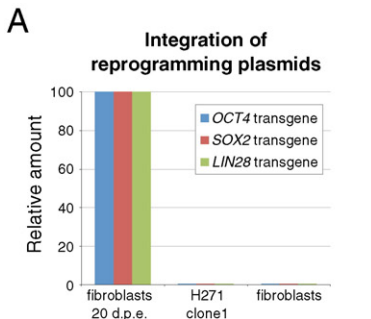
#### 3.1. Reprogramming using episomal vectors

Fibroblasts were cultured in fibroblast medium, consisting of Dulbecco's Modified Eagle Medium (DMEM) supplemented with 10%

\* Corresponding author at: Department of Clinical and Veterinary Animal Science, Copenhagen University, Grønnegårdsvej 7, 1870 Frederiksberg, C, Denmark.

E-mail address: [adele.marthaler@sund.ku.dk](mailto:adele.marthaler@sund.ku.dk) (A.G. Marthaler).

<sup>1</sup> These authors contributed equally to this work.



fetal bovine serum (FBS), 2 mM L-glutamine and 1% penicillin and streptomycin (Pen/Strep).  $1 \times 10^5$  fibroblasts were electroporated with a total of 1  $\mu$ g of episomal plasmids containing *hOCT4* with a short hairpin to *TP53* (*shP53*; Addgene plasmids 27077 and 27076, respectively), *hSOX2* and *hKLF4* (Addgene plasmid 27078), and *hL-MYC* and *hLIN28* (Addgene plasmid 27080), (Okita et al., 2011), and cultured in fibroblast medium. Electroporation was carried out using a Neon™ electroporation device with two pulses at 1200 V for 20 ms (Life Technologies). One week after electroporation, fibroblasts were trypsinized and split 1:2 onto matrigel-coated dishes (BD Biosciences) and cultured in E8 medium (Gibco) under hypoxic conditions. After four weeks, primary iPSC colonies were picked to establish stable clones.

### 3.2. Integration of episomal vectors

DNA for integration analysis was purified from fibroblasts and iPSCs using the DNeasy Blood and Tissue kit (QIAGEN). Data was plotted using the delta delta Ct algorithm,  $2^{(-\Delta\Delta Ct)}$  with fibroblasts and *GAPDH* as references. The following primers were used:

<i>OCT4</i> transgene for	5'-CATTCAAACCTGAGGTAAGGG-3'
<i>OCT4</i> transgene rev	5'-TAGCGTAAAAGGAGCAACATAG-3'
<i>SOX2</i> transgene for	5'-TTCACATGTCCAGCACTACCAGA-3'
<i>SOX2</i> transgene rev	5'-TTTGTGGACAGGAGCAACAT-3'
<i>LIN28</i> transgene for	5'-AGCCATATGGTAGCCTCATGTCCGC-3'
<i>LIN28</i> transgene rev	5'-TAGCGTAAAAGGAGCAACATAG-3'

### 3.3. Sequencing

Sanger sequencing of a 300 base pair region around the CAG repeat region of the *ATXN2* gene was carried out in an ABI PRISM 310 Genetic Analyzer using the primers SCA2 seq2 forward 5'-CTTGGTCTCGGCGG-3' and SCA2 seq2 reverse 5'-GAGGAGACCGAGGACGAGG-3'.

### 3.4. RNA extraction, cDNA synthesis, and quantitative real-time PCR (qRT-PCR)

RNA was extracted using RNeasy Mini (QIAGEN) and cDNA synthesis was performed using Revert Aid First Strand cDNA synthesis kit (Thermo Scientific) according to the manufacturers' protocols. qRT-PCR was carried out using LightCycler 480 SYBR Green I Master (Roche). Data was plotted using the delta delta Ct algorithm,  $2^{(-\Delta\Delta Ct)}$ . The following primers were used:

<i>OCT4</i> for	5'-CCCAGGGCCCCATTTTGGTACC-3'
<i>OCT4</i> rev	5'-ACCTCAGTTTGAATGCATGGGAGAGC-3'
<i>SOX2</i> for	5'-TTCACATGTCCAGCACTACCAGA-3'
<i>SOX2</i> rev	5'-TCACATGTGTGAGAGGGCAGTGTGC-3'
<i>NANOG</i> for	5'-AAAGAATCTTCACCTATGCC-3'
<i>NANOG</i> rev	5'-GAAGGAAGAGGAGAGACAGT-3'
<i>REX1</i> for	5'-TTTCTGAGTACGTGCCAGGCAA-3'
<i>REX1</i> rev	5'-CTCTGAGAAAGCATCTCTCTTC-3'
<i>LIN28</i> for	5'-AGCCATATGGTAGCCTCATGTCCGC-3'
<i>LIN28</i> rev	5'-TCAATTCTGTGCCTCCGGAGCAGGGTAGG-3'
<i>ACTB</i> for	5'-TCAAGATCATTGCTCTCTCTGAG-3'
<i>ACTB</i> rev	5'-ACATCTGCTGGAAGGTGGACA-3'
<i>RPL13A</i> for	5'-TTCCAAGCGGCTGCCGAAGA-3'
<i>RPL13A</i> rev	5'-TTCCGGCCAGCAGTACCTGT-3'
<i>HSP90A1</i> for	5'-TCCGGCCAGTGTGGGAC-3'
<i>HSP90A1</i> rev	5'-TCCATGGTGCACTTCTCAGGC-3'

(continued)

<i>GUSB</i> for	5'-TCCGCGCCGACTTCTCTGACA-3'
<i>GUSB</i> rev	5'-AAATGCCGCGAGCCAGTCC-3'

### 3.5. Immunocytochemistry

Immunocytochemistry was performed as previously described (Marthaler et al., 2013). The following primary antibodies were used: Anti-OCT4 (Santa Cruz, sc 8628); anti-NANOG (Peprotech, 500P236); anti-TRA1-60 (BioLegend, 330602); anti-SSEA4 (BioLegend, 330402); anti-TUBB3 (Millipore, MAB1637); anti-SMA (Dako, M0851), and anti-SOX17 (Santa Cruz, sc17355); all 1:500. Secondary antibodies used were: Alexa Fluor 594 rabbit anti-goat (A21223) and goat anti-rabbit (A11072), Alexa Fluor 488 donkey anti-rabbit (A21206), donkey anti-goat (A11055), and goat anti-mouse (A11017), all 1:2000, (all Invitrogen).

### 3.6. Embryoid body differentiation

iPSCs growing in E8 medium (Gibco) on matrigel (Corning Bioscience) were dissociated with EDTA (Gibco) and allowed to form aggregates in none-coated cell culture dishes. On day 3, aggregates were transferred to matrigel-coated dishes and medium was switched to differentiation medium: DMEM/F12 containing 20% FBS, L-glutamine, and non-essential amino acids (all Gibco) for meso- and endoderm induction, or DMEM/F12 containing 50% neurobasal medium, B27, N2, and L-glutamine (all Gibco) for ectoderm induction. Cells were fixed for immunocytochemistry on day 14.

### 3.7. Verification and authentication

An intact genome with no detectable abnormalities was demonstrated by karyotyping using G-banding (Fig. 1F). Analysis was performed by Cell Guidance Systems, Cambridge, UK.

### 3.8. Ethical approval

The study was approved by the regional scientific ethical committee in the Capital Region of Denmark (RH), (protocol number H-4-2011-157), Copenhagen, Denmark, and written informed consent was obtained in all cases.

### Acknowledgments

We would like to thank Dr. Keisuke Okita and Prof. Shinya Yamanaka for providing the plasmids. Furthermore, we would like to thank Ida Jørring and Anita Pacht for excellent technical assistance. This project was funded by the European Union 7th Framework Program (PIAPP-GA-2012-324451-STEMMAD) and Innovation Fund Denmark through BrainStem.

### References

- Marthaler, A.G., Tiemann, U., Arauzo-Bravo, M.J., Wu, G., Zaehres, H., Hyun, J.K., Han, D.W., Scholer, H.R., Tapia, N., 2013. Reprogramming to pluripotency through a somatic stem cell intermediate. *PLoS One* 8, e85138.
- Okita, K., Matsumura, Y., Sato, Y., Okada, A., Morizane, A., Okamoto, S., Hong, H., Nakagawa, M., Tanabe, K., Tezuka, K., et al., 2011. A more efficient method to generate integration-free human iPSC cells. *Nat. Methods* 8, 409–412.
- Pulst, S.M., Nechiporuk, A., Nechiporuk, T., Gispert, S., Chen, X.N., Lopes-Cendes, I., Pearlman, S., Starkman, S., Orozco-Diaz, G., Lunke, A., et al., 1996. Moderate expansion of a normally biallelic trinucleotide repeat in spinocerebellar ataxia type 2. *Nat. Genet.* 14, 269–276.

**Fig. 1.** H271 c1 is a *bona fide* iPSC line with a normal karyotype. (A) The absence of reprogramming plasmids was confirmed by quantitative PCR on genomic DNA of H271 c1. Fibroblasts 20 days post electroporation or non-electroporated fibroblasts served as positive and negative controls, respectively. Data was normalized to *GAPDH* and plotted using the delta delta Ct algorithm,  $2^{(-\Delta\Delta Ct)}$ . Due to location on the same plasmid, *shp53*, *KLF4*, and *L-Myc* are represented by *OCT4*, *SOX2*, and *LIN28*, respectively. (B) Sequencing of the expanded and the normal *ATXN2* allele showed 44 and 22 trinucleotide repeats, respectively, highlighted in blue. (C) Expression levels of pluripotency genes measured by qRT-PCR. Data were plotted relative to H1 human ESCs. Fibroblasts served as a negative control. Error bars indicate standard error of calculations based on  $\Delta\Delta Ct$ -values obtained from four housekeeping genes, *ACTB*, *RPL37a*, *HSP90A1*, and *GUSB*. (D) OCT4, NANOG, TRA1-60, and SSEA4 immunofluorescence images of H271 c1, counterstained with Hoechst. Scale bars, 100  $\mu$ m. (E) Immunocytochemistry for marker proteins representative of the three germ layers, TUBB3 (ectoderm), SMA (mesoderm), and SOX17 (endoderm), after *in vitro* differentiation of H271 c1 by embryoid body formation. Scale bars, 100  $\mu$ m. (F) Chromosome analysis of H271 c1 showing a normal 46, XY karyotype.