



## Painted Hieroglyphs from Tomb FA-6/1 at Ka'kabish, Belize

Haines, Helen R.; Helmke, Christophe

*Published in:*  
Mexicon

*Publication date:*  
2016

*Document version*  
Publisher's PDF, also known as Version of record

*Document license:*  
[Unspecified](#)

*Citation for published version (APA):*  
Haines, H. R., & Helmke, C. (2016). Painted Hieroglyphs from Tomb FA-6/1 at Ka'kabish, Belize. *Mexicon*, 38(5), 120-126.



www.mexicon.de

B 11348 F

# mexicon

Zeitschrift für Mesoamerikaforschung

Journal of Mesoamerican Studies – Revista sobre Estudios Mesoamericanos

Vol. XXXVIII

Oktober 2016

Nr. 5





## Painted Hieroglyphs from Tomb FA-6/1 at Ka'kabish, Belize

Helen R. Haines and Christophe Helmke

In 1995, during a preliminary survey and mapping expedition, remnants of hieroglyphs were found in a painted tomb at the ancient Maya site of Ka'kabish in north-central Belize. Initially deemed too fragmentary to be decipherable, with the advent of better photographic technology, a second attempt was made in 2010 to document the hieroglyphs. This paper presents the results of these documentation efforts and provisional interpretations of these glyphs along with a brief discussion regarding the unusual tomb in which they were found.

### Site Description

Ka'kabish is an ancient centre located in north-central Belize approximately 10 km northwest of the more well-known major site of Lamanai on the west bank of the New River Lagoon (Fig. 1). The site was first visited by David Pendergast in the late 1980s during reconnaissance efforts, while excavating at Lamanai (Pendergast 1984, 1985, 1986). At this time, access to the region was almost exclusively by boat down the New River and overland travel, when possible, was along temporary logging roads. By the 1990s a poorly graded road had been cut to connect the town of San Felipe and the community of Indian Church, which at this time was located along the edge of the lagoon, between what is now the Lamanai site museum and the ruins of the nearby 16th century churches (see Graham 2008, 2011). This road bisected the site of Ka'kabish and evidence suggests that it damaged at least one, if not several buildings along the western edge of the site.

In 1995, archaeologists from the Maya Research Program based in the Blue Creek community to the west (including the first author), conducted a preliminary survey and mapped the site. At this time dense forests and heavy rains restricted the scope of the survey to the core area. A total of 27 structures were initially mapped, virtually all of which had sustained heavy damage from looting (Guderjan 1996; see also Pendergast 1991). Ceramics collected from the looters trenches suggested an occupation ranging from the Late Formative period Rhogeesa Phase (ca. 400 B.C.-A.D. 250) to the Late Classic period Trachops Phase (ca. A.D. 600-900) (Sagebiel and Haines 2015). Due to its relatively small size coupled with its proximity to Lamanai, Ka'kabish was presumed to have functioned as a secondary site within the larger Lamanai political sphere (see Mathews 1991 as well as Helmke and Awe 2012 for projected polity areas).

Intensive archaeological investigations at Ka'kabish were initiated in 2007 under the auspices of the Ka'kabish Archaeological Research Project (KARP) under the direction of the first author. This work has substantially revised our understanding of Ka'kabish and has shed new light on the political structure of north-central Belize. At present more than

100 structures, distributed among nine plazas and courtyard complexes, have been mapped (Fig. 2).

Ceramic remains and radiocarbon samples recovered from excavations have revealed that the centre was initially settled in the Middle Formative period Mormoops Phase (ca. 800-600 B.C.) (Lockett-Harris 2013; Sagebiel and Haines 2015). Occupation at Ka'kabish continued in and around the core zone into the Middle Post-Classic period Centurio Phase (ca. A.D. 1300-1400) (Gonzalez 2014), with the period of greatest development dating to the end of the Late Formative Rhogeesa Phase and Early Classic period Desmodus Phase (ca. 400 B.C. through A.D. 600) (Sagebiel and Haines 2015; Tremain 2011).

It is during this period that we see evidence of a powerful elite population emerging, as signalled by extensive courtyard complexes, lineage temples, corbel-vaulted palatial structures, and formal tombs (Haines 2008, 2011; see discussion in Becker 2003: 258-262). The presence of tombs buried within monumental temples in the site core is taken as indicative of elite power, and possibly rulership (Fitzsimmons 2009: 11; Houk and Valdez 2011). Of particular relevance to this paper is a corbel-vaulted tomb located in Structure FA-6. This building is one of several pyramidal structures located along the eastern edge of the acropolis in the site core.

### Tomb FA-6/1

The construction of Tomb FA-6/1 is atypical for this area of north-central Belize. The tomb measures roughly 3.6 m along its north-south axis by 1.3 m wide east-west and has an overall height of 2.4 m (Fig. 3). The tomb is aligned to the primary axis of the structure, but perpendicularly and therefore lies athwart the main east-west axis of Structure FA-6. The west side of the vault revealed at least eight identifiable perforations that, upon inspection, appear to have originally accommodated triangular-shaped wooden beams. It is assumed that a matching number of beam holes would have been present in the east vault; however, collapse caused by damage from looting made it impossible to positively ascertain.

The tomb was constructed with a low passageway, 1.17 m high and 0.75 m wide, that ran for a length of approximately 2.5 m. Although passageways in tombs are known from other sites in Belize, including Caracol (Chase and Chase 1987: 26, 1994, 1996) and Minanha (Iannone 2010: 32), and whereas separate entrances, or vestibules, are also documented at Río Azul (Adams 1999; Hall 1986, 1987, 1989), and possibly at Chan Chich (Houk et al. 2010), they differ from the one at Ka'kabish in that they are at times constructed of irregular core faces (as in the case of Caracol and Minanha) or small passages carved through bedrock (as at Río Azul and Chan

## Epigraphic Analysis and Interpretation

Chich). At Ka'kabish, in contrast, the passageway was constructed of carefully cut stones that ran along a straight corridor before ending in the architectural core of the structure.

Regrettably, looters had pillaged the tomb, entering in through the east wall and tearing through sections of adjoining walls as well as removing several of the capstones. In the area exposed above the capstones, alternating lenses of carbon were visible, between layers of shell and obsidian. Over 50 pieces of obsidian were collected from the tomb when it was originally inspected during the 1995 visit by MRP staff (Haines and Glascock 2012). Carbon collected from the ceiling of the tomb yielded a calibrated radiocarbon date of cal. A.D. 416-533 (AA87098  $1602 \pm 36$  yrs.). This date corresponds with carbon samples collected from the surface and interior of the tomb's floor, which have been dated to cal. A.D. 435-528 (AA92049  $1543 \pm 36$  yrs) and cal. A.D. 386-547 (AA92050  $1603 \pm 36$  yrs). These dates that suggest that the tomb was constructed during the latter part of the 5th or early 6th century A.D.

Vestiges of paint still remain in places revealing that the walls were originally painted a dark reddish orange (Munsell: 10R 4/8) with a deeper, reddish-brown pigment being used for the glyphs (Munsell: 10R 1/10). The background paint was applied using broad brushstrokes while the glyphs exhibit a finer, more precise application technique (Fig. 4). It is possible that the glyphs were painted shortly after the background coat was applied and was still wet as the foreground and background elements have bled into each other in some areas. Both the fresco application and extensive weathering and damage caused by the looters greatly hampers the reading of the glyphic collocations. The colour palette and the use of broad brushstrokes to apply an orange background, followed by the application of painted decorations using a red pigment is highly reminiscent of the murals of the tomb discovered within Temple XX at Palenque, in Chiapas, Mexico (Robertson and Lagan 2004). Unlike Ka'kabish, the Temple XX tomb was not decorated with glyphs, but with large figures of regal ancestors, thereby anticipating the composition of the stucco murals within the tomb of the famed Palenque ruler, Pakal the Great (completed between A.D. 688 and 689), laid to rest within the Temple of the Inscriptions (see Robertson 1983; Stuart and Stuart 2008: 170-171). Based on the associated ceramics and the style of the iconography the Temple XX tomb has been provisionally dated to the 6th century, which matches the date of the Ka'kabish tomb remarkably well. Closer at hand are the painted tombs of Río Azul, located 47 km to the west, in the Peten of Guatemala. The site is renowned for its Early Classic painted tombs, which based on associated ceramics and glyphic texts date to between A.D. 417 and 450 (Acuña 2009; Adams 1999; Hall 1986, 1987). Thus, although the Río Azul tombs are several centuries earlier than the Ka'kabish tomb, it is likely that these all form part of a regional tradition, not the least since some of the Río Azul tombs, such as Tomb 19, also exhibit orange backgrounds and red designs, and many were also embellished with glyphic texts rendered in red paint (e.g. Tombs 1, 2, 5, 6, 7, 17, 23, and 25). Nevertheless, considering the rarity of preserved mural paintings in tombs of the Maya area, it remains a possibility that this was a more widespread practice in antiquity than present evidence allows.

Despite weathering and erosion, the mural is preserved in several contiguous fragments that still adhere to the west wall of the tomb. Based on what remains it is clear that the mural was once much more extensive and we suspect that the entirety of the tomb was once plastered over and embellished with a more extensive painted mural. One portion still exhibits the remains of two and part of a third glyph block (Fig. 5). The glyph blocks are set side by side in a row and their spacing is regular suggesting that a glyphic clause was rendered horizontally along the length of the tomb, instead of the more standard double-column format. In this sense the original text can be compared to that which once adorned the east wall of Tomb 12 at Río Azul (see Stuart 1987; Grazioso Sierra and Juárez Cossío 2009: Fig. 4). Based on what is preserved it can be estimated that the average glyph block measures between 25 and 26 cm wide. The glyphs are provisionally designated from left to right as Xp1, Yp1 and Zp1, in keeping with the conventions of the *Corpus of Maya Hieroglyphic Inscriptions* (Graham 1975).

Since the remaining glyphs appear to face to the viewer's left the text was probably intended to be read in the standard left-to-right reading order. The initial portion of the first collocation (Xp1) has blurred into the background which makes reading difficult, but it may represent a large and stylized celt sign, which is an undeciphered logogram, although David Stuart (2007) has suggested the reading **LEM**. Besides the celt sign, the right half of the collocation is composed of what appears to be three stacked elements, with the larger central sign exhibiting two thin parallel lines forming a circular device, the whole topped by two scrolls. Only the broad outline of the suffix is still visible. Although too little remains for a conclusive reading, on the whole this combination of signs may render the logogram **K'AWIL**, topped by flames and with a final phonetic complement **la** as the suffix. This spelling of the theonym as **K'AWIL-la**, yielding *k'awiil* (a.k.a. God K; see Taube 1992: 69-79) is consistent with the time period attributed to the tomb on the basis of the  $^{14}\text{C}$  dating noted above. In contrast, had the text been executed sometime between A.D. 747-849 then we could expect to find the spelling **K'AWIL-li** indicating the vowel-shortened form *k'awil*, especially in this part of the Maya lowlands (Stuart et al. 1999: II-16; Houston et al. 2004: 91-92, 96-97; Lacadena and Wichmann 2004: 116-119). The possible pairing of the celt sign as a qualifier to the theonym *k'awiil* has, as far as we can ascertain, not been documented for the Classic period. Nevertheless, the pairing of celt signs with theonyms is commonplace for a range of deities named in the codices of the 15th and 16th centuries, such as the Codex Madrid (1967) and Codex Dresden (1975) (see also Taube 1992). If the reading of this part of the Ka'kabish text can be verified, then this particular theonym would constitute a remarkably early and millennial forerunner of the codical examples. Interestingly, other examples from the ethnographic literature provide added insight, since accounts of the beliefs of Yucatek Maya in northern Yucatan record, among the names of various divinities, the theonym of one particular group of lightning deities as *Lelem Kaan Chaakob*, or 'Flash/Lightning Sky Chaaks', wherein the *Chaak* are deities that personify thunder and related atmospheric phenomena (Redfield and Villa Rojas

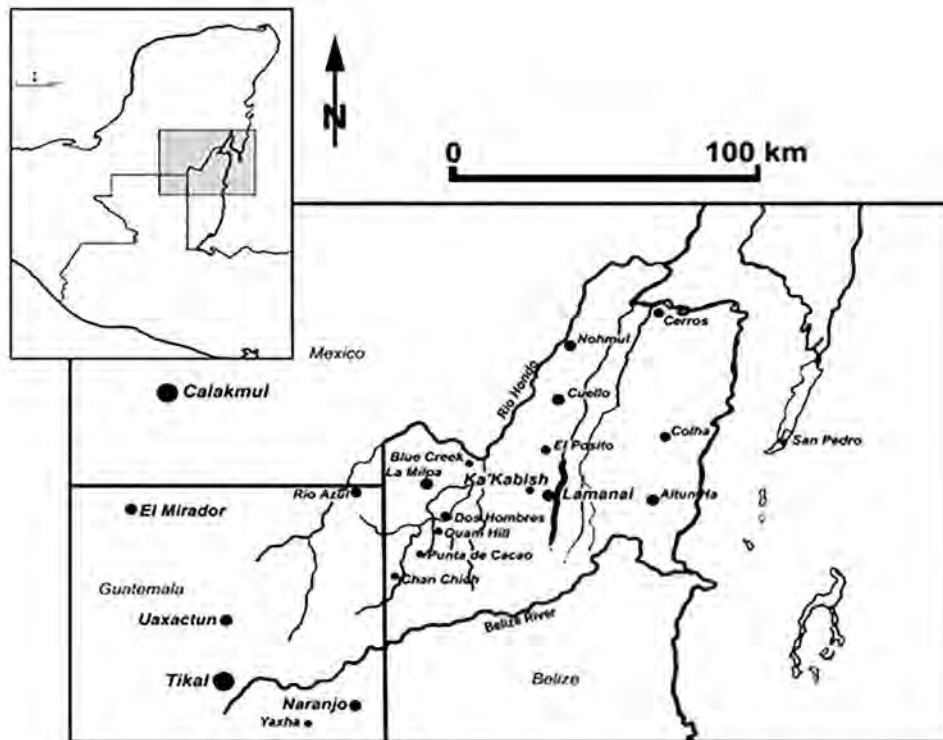
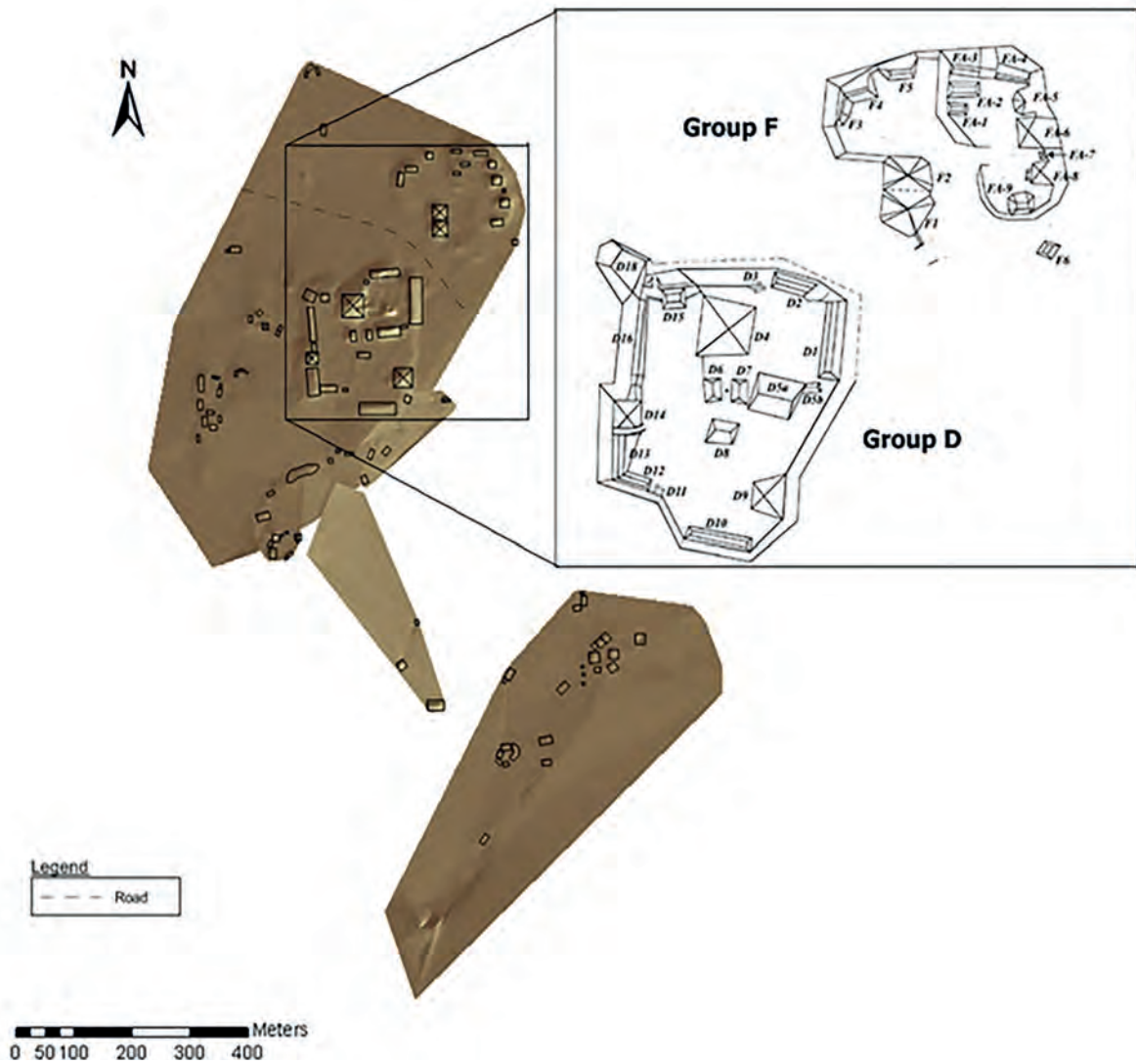


Fig. 1 Map of Northern Belize (drawing by H. Haines)



122 Fig. 2 Map of Ka'kabish (map by H. Haines and E. Jamik)



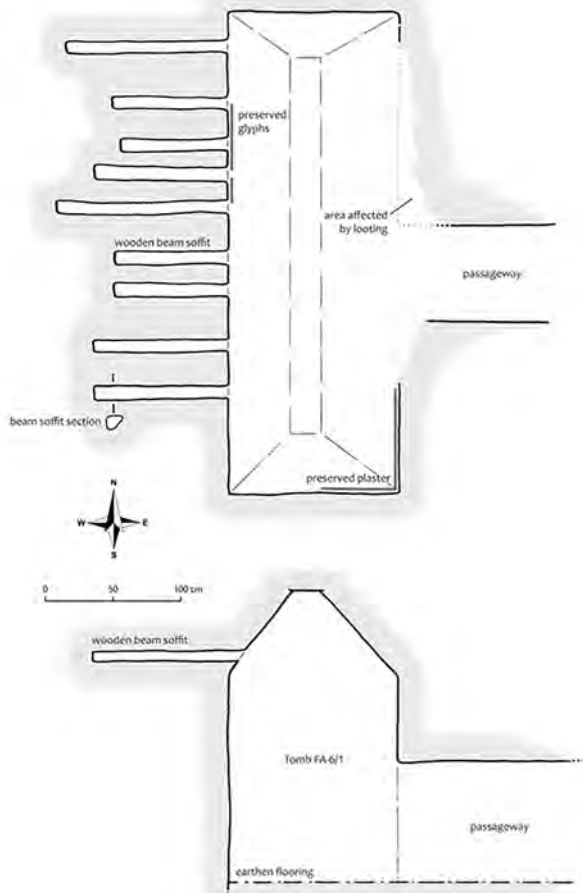


Fig. 3 Plan and section of Tomb FA-6/1 at Ka'kabish (plan by H. Haines, O. Ruano and C. Helmke)

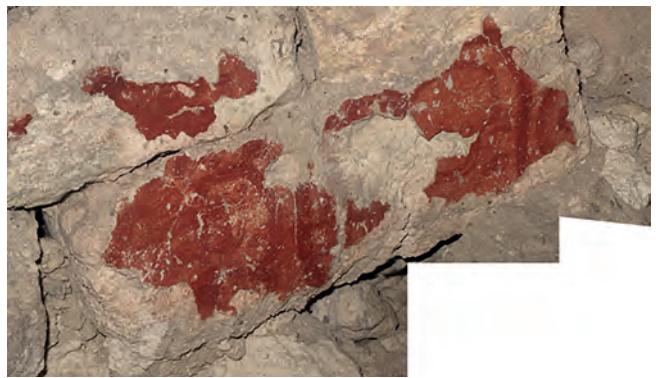


Fig. 4 Oblique photograph of the remains of painted plaster adhering to the west wall of the tomb (composite photograph by H. Haines and C. Helmke)

1934: 115, 349, 355; Villa Rojas 1995: 223). Here we have the pairing of *Lelem* (possibly analysed as *le-lem*, with the initial syllable reduplicated for emphasis as an augmentative) with the name of a thunder deity, an onomastic pattern that would duplicate that seen at Ka'kabish, wherein *Lem* would also serve to qualify the deity *K'awiil*, itself an embodiment of lightning, which in combination may prompt the translation of 'Flash/Lightning *K'awiil*'.

The second collocation (Yp1) is composed of two glyphs, the second of which may render a sign **JOL**, read *jo'l* 'skull' (see Kaufman 2003: 274; Lacadena and Wichmann 2004: 115, 117, 144), with the eyebrow providing the diagnostic markings of the sign. Alternatively, this element may record the logogram **CHAM** 'death, die', here functioning as a verbal root and plausibly recording the funerary rites that transpired within the tomb. Of the preceding glyph to this logogram little remains, and while it bears some resemblance to other known logograms may well record a vocalic sign **i**, which here could function as a conjunctive *i-chamiy-Ø* 'and (then) he/she died'. This would indicate that the original clause recorded several verbal expressions in which the death event transpired later in the narrative. Of the final preserved collocation (Zp1) too little remains to identify what it originally rendered beyond the scroll of its lower left corner. Even so, based on regular syntax and other funerary texts we can ex-

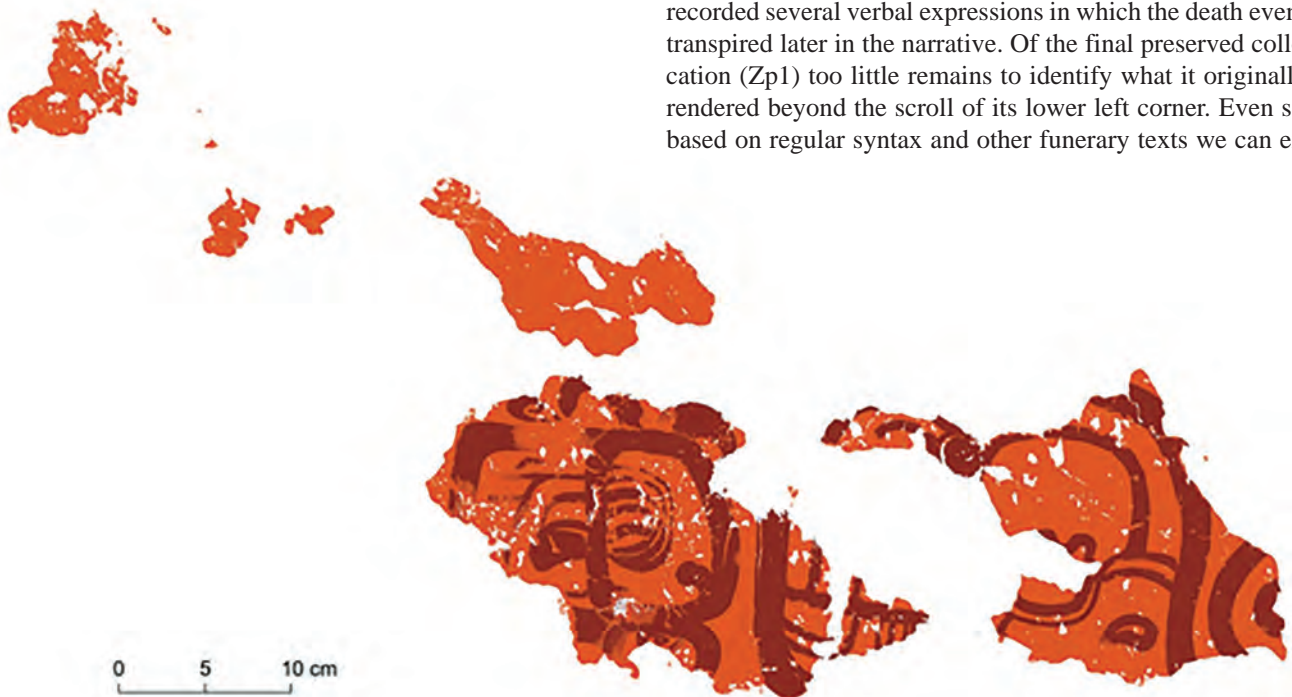


Fig. 5 The remains of plaster and painted glyphs as preserved on the east wall of Tomb FA-6/1 (drawing by C. Helmke based on rectified composite photographs)

pect the remaining glyph at Zp1 to have recorded the initial portion of the deceased's name, followed by his/her titles. Based on the extant glyphs painted on the walls of Tomb FA-6/1 at Ka'kabish, the ancient Maya text may have recorded the theonym *lem k'awiil*, quite possibly followed by a verbal construction *i-chamiy*. Although these readings are highly tentative on account of extensive weathering and damage the constituent elements provisionally identified are consistent with those found as part of proper names, or anthroponyms, assumed by royalty upon their accession (see Colas 2014; Eberl and Graña-Behrens 2004; Grube 2002), and what may be a verbal construction. One may also conclude that the anthroponym closed one clause and that the possible verbal expression initiated another, since Mayan languages are verb-initial (England 1992). Due to its partiality, no positive match could be established for the nominal sequence with other previously reported anthroponyms, and based on present evidence it stands to reason that the name rendered that of the individual interred within the tomb, following the precedence of comparable texts from the Maya area. Overall, the text painted within the Ka'kabish tomb seems to record a typical funerary text as well as parts of the name of the interred.

### Conclusion

Although hieroglyphic texts are known from this area of north-central Belize, they are most commonly found on public structures or monuments (Closs 1988; Grube 1994; Pendergast 1983: 3) as well as on portable objects including ceramics and personal objects of adornment (Grube 1994: Fig. 9; Helmke 1999; Mathews 1979:79-80; Mathews and Pendergast 1979; Pendergast 1979: 61, 127-128, 1982: 63, 84-86; Robichaux and Houk 2005). Tomb FA-6/1 represents the only known example of painted tomb hieroglyphs from this part of Belize. The uniqueness of the tomb's decoration coupled with its atypical architecture raise questions as to the status and alliances of the rulers of Ka'kabish during the important transitional "Middle Classic", but particularly during the Early Classic period, an important time when many dynastic lineages were founded (Martin 2001; Martin and Grube 2008; Schele 1992; Sharer 2001; Stuart 2004).

Evidence from Tomb FA-6/1 suggests that the elites at Ka'kabish, at least during the Early Classic period, had ties with sites to the west and quite possibly with the site of Río Azul in the Central Peten. This is particularly supported by the very presence of a painted tomb, especially one that has glyphs painted in dark red pigmentation on an even orange background, since similar tombs are known from Río Azul. This contrasts with evidence from Ka'kabish and neighbouring sites that suggests, for at least part of its later history, the fortunes of Ka'kabish were more closely tied to sites to the east, specifically Lamanai (Haines and Sagebiel n.d.) and perhaps Altun Ha (Haines and Sagebiel 2014). Thus, whereas it may be tempting to see the glyphs and the tomb within which they were found as telltale markers for the intervention of great and distant powers, the juxtaposition of Early Classic and Late Classic architectural and material culture at Ka'kabish highlights the dynamic and changing nature of ancient Maya polities at a more local level (Demarest 1993, 1997; Demarest et al. 1997; Estrada-Belli 2011; Hansen and Guenter 2005; Helmke and Awe 2012; Iannone 2005; Marcus

1992, 1993). It is hoped that further investigations at Ka'kabish will shed additional light on the political organisation of this clearly little known corner of the ancient Maya world.

### Acknowledgements

Many thanks to Sr. Rufino Magaña Senior, and the community of Indian Church Village. We are grateful to the Institute of Archaeology for continued support of our research. Thanks also to Elizabeth Graham, Stanley Guenter, Guido Krempel, Erik Boot and Nikolai Grube for comments and suggestions that have greatly benefitted this paper. We would also like to thank Chris Scarre, Norman Hammond as well as two anonymous reviewers of this paper for their comments, which have greatly improved the paper. This work was supported by the Social Sciences and Humanities Research of Canada, Standard Research Grant 410-2009-0722.

### References Cited

- Acuña, Mary J.  
2009 Paisajes cosmológicos mayas: Las pinturas murales de Río Azul. In: Juan Pedro Laporte, Barbara Arroyo and Héctor Mejía, *XXIII Simposio de Investigaciones Arqueológicas en Guatemala* (2008), pp. 1233–1245. Museo Nacional de Arqueología y Etnología, Guatemala.
- Adams, Richard E.W.  
1999 *Río Azul: An Ancient Maya City*. University of Oklahoma Press, Norman.
- Becker, Marshall J.  
2003 Plaza Plans at Tikal: A Research Strategy for Inferring Social Organization and the Process for Culture Change at Lowland Maya Sites. In: Jeremy A. Sabloff (Ed.), *Tikal: Dynasties, Foreigners, and Affairs of State*, pp. 253–280. School of American Research Press, Santa Fe.
- Chase, Arlen F., and Diane Z. Chase  
1987 *Investigations at the Classic Maya City of Caracol, Belize: 1985-1987*. Pre-Columbian Art and Research Institute, Monograph 3. Pre-Columbian Art and Research Institute, San Francisco.  
1994 Maya Veneration of the Dead at Caracol, Belize. In: Merle Greene Robertson (Ed.), *Seventh Palenque Round Table 1989*. pp. 55–62. Pre-Columbian Art Research Institute, San Francisco.
- Chase, Diane Z., and Arlen F. Chase  
1996 Maya Multiples: Individuals, Entries, and Tombs in Structure A34 of Caracol, Belize. *Latin American Antiquity* 7(1): 61–79.
- Closs, Michael P.  
1988 The Hieroglyphic Text of Stela 9, Lamanai, Belize. *Research Reports on Ancient Maya Writing* 21. Center for Maya Research, Washington D.C.
- Codex Dresden  
1975 Akademische Druck- u. Verlagsanstalt, Graz.
- Codex Madrid  
1967 Akademische Druck- u. Verlagsanstalt, Graz.
- Colas, Pierre R.  
2014 Personal Names: The Creation of Social Status among the Classic Maya. In: Christophe Helmke and Frauke Sachse (Eds.), *A Celebration of the Life and Work of Pierre Robert Colas*, pp. 19–59. Acta Mesoamericana, Vol. 27. Anton Saurwein, Munich.
- Demarest, Arthur A.  
1993 The Violent Saga of a Maya Kingdom. *National Geographic* 183(2): 94–111.
- Demarest, Arthur A., Matt O'Mansky, Claudia Wolley, Dirk Van Tuerenhout, Takeshi Inomata, Joel Palka and Héctor Escobedo  
1997 Classic Maya Defensive Systems and Warfare in the Pextebatun Region. *Ancient Mesoamerica* 8(2): 229–253.
- Eberl, Markus, and Daniel Graña-Behrens  
2004 Proper names and throne names: on the naming practice of Classic Maya. In: Daniel Graña-Behrens, Nikolai Grube, Christian M. Prager,

- Frauke Sachse, Stefanie Teufel, and Elizabeth Wagner (Eds.), *Continuity and Change: Maya Religious Practices in Temporal Perspective*, pp. 101–120. Anton Saurwein, Markt Schwaben.
- Estrada-Belli, Francisco  
2011 *The First Maya Civilization: Ritual and Power Before the Classic Period*. Routledge Press, New York.
- Gonzalez, Toni A.  
2014 Investigations of Chultun C-1 at Ka'kabish. Helen R. Haines (Ed.), *Ka'kabish Archaeological Research Project (KARP) Report on the 2013 Field Season*, pp. 33–41. Final Report of the 2013 field season submitted to the Institute of Archaeology, NICH, Belmopan.
- Graham, Elizabeth A.  
2008 Lamanai Historic Monuments Conservation Project: Recording and Consolidation of New Church Architectural Features at Lamanai, Belize. *Foundation for the Advancement of Mesoamerican Studies, Inc.*: <http://www.famsi.org/reports/06110C/06110CGraham01.pdf>  
2011 *Maya Christians and Their Churches in Sixteenth-Century Belize*. University of Florida Press, Gainesville.
- Graham, Ian  
1975 *Corpus of Maya Hieroglyphic Inscriptions, Volume 1: Introduction*. Peabody Museum of Archaeology and Ethnology, Harvard University, Cambridge.
- Grazioso Sierra, Liwy, and Daniel J. Cossío.  
2009 Programa de intervención de las Tumbas 1 y 19 de Rio Azul, Primera etapa: Limpieza y estabilización. Juan Pedro Laporte, Barbara Arroyo and Hector Mejía (Eds.), *XXII Simposio de Investigaciones Arqueológicas en Guatemala, 2008*, pp. 418–430. Museo Nacional de Arqueología y Etnología, Guatemala.
- Grube, Nikolai  
1994 A preliminary report on the monuments and inscriptions of La Milpa, Orange Walk, Belize. *Baessler-Archiv* 42 (2): 217–238.  
2002 Onomástica de los gobernantes mayas. *La organización social entre los mayas: Memoria de la Tercera Mesa Redonda de Palenque, Vol. II*, edited by Vera Tiesler Blos, Rafael Cobos and Merle Greene Robertson, pp. 321–353. Instituto Nacional de Antropología e Historia and Universidad Autónoma de Yucatán, Mexico, D.F. and Mérida.
- Guderjan, Thomas H.  
1996 Ka'kabish: Mapping of a Maya Center. In: Thomas H. Guderjan, William D. Driver, and Helen R. Haines (Eds.), *Archaeological Research at Blue Creek, Belize. Progress Report of the Fourth (1995) Field Season*, pp. 117–120. Maya Research Program, St. Mary's University, San Antonio.
- Haines, Helen R.  
2008 Causeway Terminus, Minor Centre, Elite Refuge, or Ritual Capital? Ka'kabish, A New Puzzle on the Ancient Maya Landscape of North-Central Belize. *Research Reports in Belizean Archaeology* 5: 269–280.  
2011 How the Other-Half Lived: Continuing Discussions of the Enigma that is Ka'kabish, Belize. *Research Reports in Belizean Archaeology* 8: 137–150.
- Haines, Helen R., and Michael D. Glascock  
2012 *Intra-Site Obsidian Distribution and Consumption Patterns in North-Western Belize and the North-Eastern Petén*. British Archaeological Reports, International Series, S2326. Archaeopress, Oxford.
- Haines, Helen R. and Kerry L. Sagebiel  
n.d. "Long Shall I Rule Thee": Remaking the Ancient Maya Political Landscape of North-Central Belize. In: Shawn G. Morton and Meaghan Peuramaki-Brown (Eds.), *Seeking Conflict: Understanding Ancient Maya Hostilities through Text and Image*. University Press of Colorado, Boulder.  
2014 *In a Borrow'd Name: The Ka'kabish, Lamanai, Altun Ha Connection?* Paper presented at the Mid-West Mesoamerican Meetings, DeKalb. March 29<sup>th</sup>.
- Hall, Grant D.  
1986 Results of Tomb Investigations at Rio Azul, Season of 1984. In: Richard E.W. Adams (Ed.), *Rio Azul Reports Number 2, the 1984 Season*, pp. 69–111. University of Texas at San Antonio, San Antonio.  
1987 The Discovery of Tomb 23 and Results of Other Tomb Investigations at Rio Azul, Season of 1985. In: Richard E.W. Adams (Ed.), *Rio Azul Reports, Number 3, the 1985 Season*, pp. 107–151. University of Texas at San Antonio, San Antonio.
- 1989 Realm of Death: Royal Mortuary Customs and Polity Interaction in the Classic Maya Lowlands. Unpublished Ph.D. dissertation, Department of Anthropology, Harvard University, Cambridge.
- Hansen, Richard D., and Stanley P. Guenter  
2005 Early Social Complexity and Kingship in the Mirador Basin. In: Virginia M. Fields and Dorie Reents-Budet (Eds.), *Lords of Creations: The Origins of Sacred Maya Kingship*, pp. 60–61. Los Angeles County Museum of Art, Los Angeles.
- Helmke, Christophe  
1999 Preliminary Comments on the Altun Ha Dynastic Sequence: An Epigraphic and Ceramic Analysis. *The Maya Universe Symposium and Exhibit*, Gardiner Museum of Ceramic Art, Toronto, Oct. 2<sup>nd</sup>.  
2012 Ancient Maya Territorial Organisation of Central Belize: Confluence of Archaeological and Epigraphic Data. *Contributions in New World Archaeology* 4: 59–90.
- Houk, Brett, Hugh R. Robichaux, and Fred Valdez Jr.  
2010 An Early Royal Maya Tomb from Chan Chich, Belize. *Ancient Mesoamerica* 21:229–248.
- Houk, Brett, and Fred Valdez Jr.  
2011 The Precocious Dead: Status, Power, and Early Tombs in the Eastern Three Rivers Region. *Research Reports in Belizean Archaeology* 8: 151–158.
- Houston, Stephen, David Stuart, and John Robertson  
2004 Disharmony in Maya Hieroglyphic Writing: Linguistic Change and Continuity in Classic Society. In: Søren Wichmann (Ed.), *The Linguistics of Maya Writing*, pp. 83–101. University of Utah Press, Salt Lake City.
- Iannone, Gyles  
2010 The Rise and Fall of an Ancient Maya Petty Royal Court. *Latin American Antiquity* 16: 26–44.
- Kaufman, Terrence  
2003 A Preliminary Mayan Etymological Dictionary. *Foundation for the Advancement of Mesoamerican Studies, Inc.*: [www.famsi.org/reports/01051/pmed.pdf](http://www.famsi.org/reports/01051/pmed.pdf)
- Lacadena, Alfonso, and Søren Wichmann  
2004 On the Representation of the Glottal Stop in Maya Writing. In: Søren Wichmann (Ed.), *The Linguistics of Maya Writing*, pp. 100–162. University of Utah Press, Salt Lake City.
- Lockett-Harris, Joshua J.  
2013 Middle Formative 'Foundations' in Group D: Buried Platform, Mortuary Offerings, and Ritual Paraphernalia. In: Cara G. Tremian and Helen R. Haines (Eds.), *The 2012 Archaeological Report of the Ka'kabish Archaeological Research Project (KARP)*, pp. 41–64. Final Report of the 2012 field season submitted to The Institute of Archaeology, NICH, Belmopan, Belize.
- Marcus, Joyce  
1992 Political Fluctuations in Mesoamerica: Dynamic Cycles of Mesoamerican States. *National Geographic Research and Exploration* 8:392–411.  
1993 Ancient Maya Political Organization. In: Jeremy A. Sabloff and John S. Henderson (Eds.), *Lowland Maya Civilization in the Eighth Century A.D.*, pp. 111–184. Dumbarton Oaks, Washington, D.C.
- Martin, Simon  
2001 In the Line of the Founder: A View of Dynastic Politics at Tikal. *Tikal: Dynasties, Foreigners, and Affairs of State*, edited by Jeremy A. Sabloff, pp. 3–46. School of American Research Press, Santa Fe.
- Martin, Simon, and Nikolai Grube  
2008 *Chronicle of the Maya Kings and Queens*. Revised edition. Thames and Hudson Press, London.
- Mathews, Peter  
1979 The Glyphs on the Ear Ornaments from Tomb A-1/1. In: David M. Pendergast (Ed.), *Excavations at Altun Ha Belize, 1964–1970, Volume 1*, pp. 79–80. Royal Ontario Museum, Toronto.  
1991 Classic Maya Emblem Glyphs. In: T. Patrick Culbert (Ed.), *Classic Maya Political History*, pp. 19–29. Cambridge University Press, Cambridge.




- Mathews, Peter, and David M. Pendergast  
1979 The Altun Ha Jade Plaque: Deciphering the Inscription. In: John A. Graham (Ed.), *Contributions of the University of California Archaeological Research Facility, No. 41*, pp. 197–214. Archaeological Research Facility, University of California, Berkeley.
- Pendergast, David M.  
1979 *Excavations at Altun Ha Belize, 1964-1970, Volume 1*. Royal Ontario Museum, Toronto.  
1982 *Excavations at Altun Ha Belize, 1964-1970, Volume 2*. Royal Ontario Museum, Toronto.  
1982 Lamanai, Belice, durante el Post-Clásico. *Estudios de Cultura Maya* 14:19–58.  
1983 Lamanai, 1983: A Real Glyph-Hanger. *ROM Archaeological Newsletter*, No. 215.  
1984 Excavations at Lamanai, Belize, 1983. *Mexicon* 6(1): 5–10.  
1985 Lamanai, Belize: An Updated View. Arlen F. Chase and Prudence M. Rice (Eds.), *The Lowland Maya Postclassic*, pp. 91–103. University of Texas Press, Austin.  
1986 Stability through Change: Lamanai, Belize, from the Ninth to the Seventeenth Century. In: Jeremy A. Sabloff and E. Wyllys Andrews V (Eds.), *Late Lowland Maya Civilization: Classic to Postclassic*, pp. 223–249. University of New Mexico Press, Albuquerque.  
1991 And the Loot Goes On: Winning Some Battles, But Not the War. *Journal of Field Archaeology* 18: 89–95.
- Redfield, Robert, and Alfonso Villa Rojas  
1934 *Chan Kom: A Maya Village*. Carnegie Institution of Washington, Washington, D.C.
- Robertson, Merle G.  
1983 *The Sculpture of Palenque. Volume I: The Temple of Inscriptions*. Princeton University Press, Princeton.
- Robertson, Merle G., and Leon Lagan.  
2004 Flag 139 Report: Maya Tomb Found in Temple XX Sub, Palenque Archaeological Zone, Chiapas, Mexico. *The Explorers Club*: [http://www.explorers.org/flag\\_reports/139robertson2003.pdf](http://www.explorers.org/flag_reports/139robertson2003.pdf)
- Robichaux, Hugh R., and Brett A. Houk  
2005 A Hieroglyphic Plate Fragment from Dos Hombres, Belize: Epigraphic and Archaeological Evidence Relating to Political Organization in the Three Rivers Region of Northwestern Belize and Northeastern Guatemala. *Mono y Conejo* 3: 4–12.
- Sagebiel, Kerry L., and Helen R. Haines  
2015 Never Ending, Still Beginning: A New Examination of the Ceramics of Ka'kabish, Belize. *Research Reports in Belizean Archaeology*, vol. 12: 359–366.
- Sharer, Robert J.  
2001 Tikal and the Copan Dynastic Founding. In: Jeremy A. Sabloff (Ed.), *Tikal: Dynasties, Foreigners, and Affairs of State*, pp. 319–353. School of American Research Press, Santa Fe.
- Stuart, David  
1987 The paintings of Tomb 12, Rio Azul. *Rio Azul Reports, Number 3, the 1985 Season*, ed. by Richard E. W. Adams, pp. 161–167. University of Texas at San Antonio, San Antonio.  
2004 The Beginnings of the Copan Dynasty: A Review of the Hieroglyphic and Historical Evidence. *Understanding Early Classic Copan*, edited by Ellen E. Bell, Marcello A. Canuto, and Robert J. Sharer, pp. 215–247. University of Pennsylvania Museum, Philadelphia.  
2007 The Michol Celt. *Maya Decipherment*: <http://decipherment.wordpress.com/2007/04/01/the-michol-celt/sketch-of-the-michol-celt-ds-drawing-ca-1988/>
- Stuart, David, Stephen Houston and John Robertson  
1999 Recovering the Past: Classic Maya Language and Classic Maya Gods. *Notebook for the XXIIIrd Maya Hieroglyphic Forum at Texas*, pp. II.1–II.95. Department of Art and Art History, College of Fine Arts, Institute of Latin American Studies, University of Texas at Austin, Austin.
- Stuart, David, and George Stuart  
2008 *Palenque: Eternal City of the Maya*. Thames and Hudson, London.
- Taube, Karl A.  
1992 *The Major Gods of Ancient Yucatan*. Studies in Pre-Columbian Art and Archaeology No. 32. Dumbarton Oaks Research Library and Collection, Washington D.C.
- Tremain, Cara G.  
2011 Utilization of Looters' Trenches at Structures D4 and D9, Ka'kabish, Northern Belize. Paper presented at the 76th Annual Meeting of the Society for American Archaeology, Sacramento. March 30-April 3, 2011.

ANZEIGE

NEW

## ACTA MESOAMERICANA

### Volume 28



## On Methods

### How we know what we think we know about the Maya

Proceedings of the 17th European Maya Conference, Helsinki, December 9–15, 2012  
 Edited by Harri Kettunen and Christophe Helmke (Rosa-Maria Worm Danbo as editorial assistant)  
 Acta Mesoamericana, Vol. 28, iv+131 pp., num. colour and b/w ill., cloth, size 21×29.5cm, ISBN 3-931419-27-4, EURO 50.00  
 Verlag Anton Saurwein, München, Germany 2015

#### CONCEPTUALIZING THE MAYA AND THE PAST

John S. Henderson & Kathryn Marie Hudson: *The Myth of Maya: Archaeology and the Construction of Mesoamerican Histories*;  
 Felix Kupprat: *Analyzing the Past of the Past: A Methodological Proposal for the Study of Cultural Memory among the Classic Maya*;  
 Daniel Graña-Behrens: *The Past by the Present: Ethnography as a Means to Explain the Ancient Maya*

#### LINGUISTIC APPROACHES

José Luis González & Jesús Carretero Pérez: *Nenek—Un caso de estudio sobre la introducción de la lengua huasteca al Internet*;  
 Eriko Yamasaki: *Multi-sited Ethnography of Yucatec Maya Speakers: How Multi-sited and Urban Approaches help comprehend the Sociolinguistic Situation of Yucatec Maya*

#### ICONOLOGY, EPIGRAPHY & AGENT SIMULATION

Rogelio Valencia Rivera: *A Picture is Worth a Thousand Words. Or is It?*; Sven Gronemeyer: *Class Struggle: Towards a Better Understanding of Maya Writing Using Comparative Graphematics*;  
 Meaghan M. Peuramaki-Brown, Shawn G. Morton & Peter C. Dawson: *The Dynamic Maya City: Methods for Modelling Pedestrian Movement in Ancient Civic-Ceremonial Centres*

Please send your orders to: Verlag Anton Saurwein, Gatterburgstrasse 15, 80689 München, Germany

mexicon

