



Heat Stress Affects Pi-related Genes Expression and Inorganic Phosphate Deposition/Accumulation in Barley

Pacak, Andrzej; Barciszewska-Pacak, Maria; Swida-Barteczka, Aleksandra; Kruszka, Katarzyna; Segal, Pawel; Milanowska, Kaja; Jakobsen, Iver; Jarmolowski, Artur; Szweykowska-Kulinska, Zofia

Published in:
Frontiers in Plant Science

DOI:
[10.3389/fpls.2016.00926](https://doi.org/10.3389/fpls.2016.00926)

Publication date:
2016

Document version
Publisher's PDF, also known as Version of record

Citation for published version (APA):
Pacak, A., Barciszewska-Pacak, M., Swida-Barteczka, A., Kruszka, K., Segal, P., Milanowska, K., ... Szweykowska-Kulinska, Z. (2016). Heat Stress Affects Pi-related Genes Expression and Inorganic Phosphate Deposition/Accumulation in Barley. *Frontiers in Plant Science*, 7, [926]. <https://doi.org/10.3389/fpls.2016.00926>



Heat Stress Affects Pi-related Genes Expression and Inorganic Phosphate Deposition/Accumulation in Barley

Andrzej Pacak^{1*}, Maria Barciszewska-Pacak¹, Aleksandra Swida-Barteczka¹, Katarzyna Kruszk¹, Pawel Seg¹, Kaja Milanowska¹, Iver Jakobsen², Artur Jarmolowski¹ and Zofia Szweykowska-Kulinska¹

¹ Department of Gene Expression, Institute of Molecular Biology and Biotechnology, Faculty of Biology, Adam Mickiewicz University in Poznan, Poznan, Poland, ² Department of Plant and Environmental Sciences, Faculty of Science, University of Copenhagen, Copenhagen, Denmark

OPEN ACCESS

Edited by:

Soumitra Paul,
University of Calcutta, India

Reviewed by:

James Stangoulis,
Flinders University, Australia
Jitender Giri,
National Institute of Plant Genome
Research, India

*Correspondence:

Andrzej Pacak
apacak@amu.edu.pl

Specialty section:

This article was submitted to
Plant Nutrition,
a section of the journal
Frontiers in Plant Science

Received: 09 March 2016

Accepted: 10 June 2016

Published: 24 June 2016

Citation:

Pacak A, Barciszewska-Pacak M, Swida-Barteczka A, Kruszk K, Seg P, Milanowska K, Jakobsen I, Jarmolowski A and Szweykowska-Kulinska Z (2016) Heat Stress Affects Pi-related Genes Expression and Inorganic Phosphate Deposition/Accumulation in Barley. *Front. Plant Sci.* 7:926. doi: 10.3389/fpls.2016.00926

Phosphorus (P) in plants is taken from soil as an inorganic phosphate (Pi) and is one of the most important macroelements in growth and development. Plants actively react to Pi starvation by the induced expression of Pi transporters, *MIR399*, *MIR827*, and *miR399* molecular sponge – *IPS1* genes and by the decreased expression of the ubiquitin-conjugating enzyme E2 (*PHOSPHATE2* – *PHO2*) and Pi sensing and transport *SPX-MFS* genes. The *PHO2* protein is involved in the degradation of Pi transporters *PHT1;1* (from soil to roots) and *PHO1* (from roots to shoots). The decreased expression of *PHO2* leads to Pi accumulation in shoots. In contrast, the *pho1* mutant shows a decreased level of Pi concentration in shoots. Finally, Pi starvation leads to decreased Pi concentration in all plant tissues. Little is known about plant Pi homeostasis in other abiotic stress conditions. We found that, during the first hour of heat stress, Pi accumulated in barley shoots but not in the roots, and transcriptomic data analysis as well as RT-qPCR led us to propose an explanation for this phenomenon. Pi transport inhibition from soil to roots is balanced by lower Pi efflux from roots to shoots directed by the *PHO1* transporter. In shoots, the *PHO2* mRNA level is decreased, leading to an increased Pi level. We concluded that Pi homeostasis in barley during heat stress is maintained by dynamic changes in Pi-related genes expression.

Keywords: barley, Pi transporters, *PHO2*, phosphate, high temperature, abiotic stress

INTRODUCTION

Phosphorus (P) is an essential macronutrient for plant growth and development. It is a component of vital molecules such as ATP, DNA, RNA, phospholipids, and phosphorylated sugars, making it crucial to cellular metabolism (Huang et al., 2008), energy conversion, and cell structure. Plants take up P solely as inorganic phosphate ions (Pi) from low concentrations in the soil solution. Most soil P is adsorbed, immobilized in organic matter, or precipitated as minerals (Poirier and Bucher, 2002).

Plants have a range of strategies to cope with a limiting Pi supply, including (i) favoring root growth over shoot growth, (ii) increasing the activity of high-affinity Pi transporters, (iii) exuding protons and organic anions to liberate Pi in the rhizosphere, and (iv) secreting acid phosphatases and ribonucleases to release Pi from organic compounds (Nilsson et al., 2007). Phosphate-deficient

plants mobilize Pi from different subcellular compartments and organs and increase their Pi use efficiency by promoting metabolic bypasses that favor Pi-releasing reactions (Nilsson et al., 2007; Huang et al., 2008).

The uptake and redistribution of Pi is mediated by many different Pi transport proteins. These transporters have been classified into four families (dependent on their cellular location): PHT1 (plasma membrane), PHT2 (plastid inner envelope), PHT3 (mitochondrial inner membrane), and PHT4 (plastid inner envelope) (Karandashov and Bucher, 2005; Guo et al., 2008). The main role in Pi transportation from soil to plant roots is played by proteins belonging to the PHT1 Pi transporter family. Ten *PHT1* genes have been identified in barley, and some of them have almost identical sequences; i.e., *HvPHT1;1*, and its paralogs *PHT1;2*, *PHT1;9*, and *PHT1;10*. These paralogs are expressed only in roots and are highly responsive to Pi limitation (Huang et al., 2011). *HvPht1;6* is expressed in roots and in the older leaves of shoots (Preuss et al., 2010). The *HvPHT1;8* gene is activated in the presence of arbuscular mycorrhizal fungi (Christophersen et al., 2009). In *Arabidopsis* *PHT1;1* and *PHT1;4*, members of the PHT1 Pi transporter family play a central role in Pi acquisition (Shin et al., 2004). Another Pi transporter gene (*PHO1*) is primarily expressed in the root stelar cells and is involved in Pi loading into the xylem (Liu et al., 2014; Wege et al., 2016), and the *pho1* mutant shows a low Pi level in shoots (Liu et al., 2014). Rice *PHO1;2* is involved in the long-distance transport of Pi from roots to shoots (Wang et al., 2015). SPX-MFS proteins are, in turn, involved in Pi sensing and transport. In rice, OsSPX-MFS1 and OsSPX-MFS2 are targeted by Pi-responsive miR827 (Wang et al., 2012). This microRNA in *Arabidopsis* targets *NLA* (Nitrogen Limitation Adaptation) mRNAs that encode E3 ubiquitin ligase. Recently, it was shown that *NLA* protein works together with *PHO2* (PHOSPHATE2, ubiquitin-conjugating enzyme E2), and they are both responsible for *PHT1;4* degradation via the 26S proteasome (Park et al., 2014). *PHO2* is involved in defining cellular Pi homeostasis and is responsible for the ubiquitin transfer to the protein substrate via the E3 enzyme (ubiquitin-protein ligase) (Smalle and Vierstra, 2004). The *PHO2* protein itself is involved in the degradation of the *PHT1;1*, *PHT1;2*, *PHT1;3*, *PHT1;4*, *PHO1*, and *PHF1* (PHOSPHATE TRANSPORTER TRAFFIC FACILITATOR1) (Liu et al., 2012; Huang et al., 2013). Thus, it is a general negative regulator of Pi uptake. The response of plants to Pi deprivation requires specific sensing mechanisms to monitor Pi status as well as signaling mechanisms leading to transcriptional and post-transcriptional regulation. *PHR1* from *Arabidopsis thaliana* is a MYB-related transcription factor (TF) that regulates the expression of Pi-starvation induced genes through binding to the *P1BS* (*PHR1*-binding sequence) sequence, a DNA motif in the promoters of many Pi-related genes (Bari et al., 2006; Sobkowiak et al., 2012). There are three *P1BS*-like elements within the barley *PHT1;1* promoter that are potentially recognized by *PHR1* (Schunmann et al., 2004a). Moreover, in the *Arabidopsis IPS1* promoter, there are two *P1BS* motifs (Bustos et al., 2010). In rice, *PHR1* and *PHR2* (an ortholog of *AtPHR1*) are involved in Pi-related gene regulation (Wang et al., 2014). Although *AtPHR1* and *OsPHR2* regulate the

expression of Pi-related genes, they are rather stably expressed and do not belong to the group of Pi-stress responsive genes (Wang et al., 2014). The Pi homeostasis regulatory system also comprises the actions of microRNA399 and microRNA827 (Bari et al., 2006; Hackenberg et al., 2013). miR399 guides the RISC complex to target *PHO2* mRNA. Furthermore, a riboregulator *IPS1* can bind and quench miR399 activity because it is not cleaved by the miRNA due to the base pair mismatches, which prevents *PHO2* mRNA against complete degradation (Franco-Zorrilla et al., 2007). Also, genes such as *Arabidopsis SIZ1* (*SIZ/PIAS*-type SUMO (Small Ubiquitin-related Modifier) E3 ligase) are involved in Pi response (Miura et al., 2005). Rice mutant *Ossiz1* shows an increase of Pi concentration in both root and shoot tissue (Wang et al., 2015). In *Arabidopsis*, *SIZ1* is responsible for the SUMOylation of *PHR1* (Miura et al., 2005). Although *OsSIZ1* itself is not very responsive to Pi starvation, it regulates the expression of other Pi-related genes, like *MIR399a*, *PHO2*, *PHR2*, or Pi transporters (Wang et al., 2015).

Heat stress has a big impact on plant growth and development. High temperature affects flowering time, reduces number, and leads to a reduction of size as well as an increase of deformity in floral organs (Zinn et al., 2010). Heat stress is also responsible for changing gene expression, including microRNAs and (as a consequence) their target mRNA levels. Barley microRNAs like miR160a, 166a, 167h, and 5175a are upregulated in heat stress, and consequently, the appropriate target genes are downregulated (Kruszka et al., 2014).

Transcriptomic data analysis derived from 1-h heat-stressed plants shows dramatic changes in Pi-related gene expression in roots as compared to unstressed controls. Based on their expression changes, a network of particular gene expression regulation and its influence on Pi homeostasis can be proposed. The expression of the *HvPHT1;1*, *HvPHT1;4*, and *HvPHT1;6* genes is downregulated in roots, which therefore should have decreased Pi concentrations. However, this is not the case; possibly, because the expression of the *PHO1* gene is concurrently decreased in the root. A lower *PHO1* level can lead to lower Pi efflux from roots to shoots. Pi concentration in roots (in control and in heat treated plants) was always on the same level with one exception at 4 h time-point. The observed increased Pi concentration was correlated with significant *PHT1;4* up-regulation. Moreover, transcriptomic data reveals that *PHO2* and *SPX-MFS* are downregulated in roots, but not *PHR1*, *PHR2*, nor *SIZ1*. In heat treated shoots at two time-points: 1 h and 12 h we observed increased Pi concentration. It was correlated with *PHO2* and *PHT1;6* genes expression profile changes. At these time-points, the barley shoots showed increased Pi concentration; this agrees with previous data showing that *PHO2* silencing leads to an increase of Pi concentration in barley shoots (Pacak et al., 2010). Since we detected neither mature miR399 nor significant changes in the expression of mature miR827 in barley shoots, we concluded that the changes observed resulted from transcriptional regulation. The transcriptomic data was mostly confirmed by the RT-qPCR results. The changes in Pi concentration in barley shoots at 1 and 12 h heat time-points are abolished in other hours of heat stress, leading

to Pi-concentration stability. Summarizing, the changes in expression of Pi-related genes after heat stress are not chaotic but strictly controlled, regarding what is necessary for the plant to maintain Pi homeostasis. During Pi re-supply, in barley roots we observed significant downregulation of the *PHT1;1*, *PHT1;4*, *PHT1;6*, *PHO1*, *PHO2* but not *PHR1*, *SPX-MFS*. In contrast to heat stress condition, at 1 h after Pi re-supply we observed increased expression of *PHO1* in Pi-resupplied plants compared to the control ones. We concluded that fine-tuning changes of *PHO1* expression in barley roots prevents Pi over-accumulation.

MATERIALS AND METHODS

Plant Growth Conditions

In the heat experiment, barley plants cultivar Rolap were grown under conditions as previously described (Kruszka et al., 2013), and the heat stress conditions were established also as previously described (Kruszka et al., 2014) – except that the soil water content was kept at 70% to prevent drought stress. The soil/sand mixture (7:2) was amended with 35 ml of a medium containing: 28 mM NH_4NO_3 , 20 mM KH_2PO_4 , 4 mM K_2SO_4 , 16 mM $\text{MgSO}_4 \cdot 7\text{H}_2\text{O}$, 53 μM H_3BO_3 , 8 μM CuSO_4 , 4 μM $\text{MnSO}_4 \cdot \text{H}_2\text{O}$, and 120 μM $\text{FeCl}_3 \cdot 6\text{H}_2\text{O}$. Two-week-old barley plants exposed 48 hours to heat stress were harvested at 1, 3, 4, 5, 6, 7, 8, 12, 24, and 48 h after the initiation of 35.5°C heat stress. Unstressed control plants were also grown (at 22°C). In the P stress experiment, barley plants cultivars Rolap and Black Hulless were grown at different Pi regimes in a 7:2 (cv. Rolap) and 1:1 (cv. Black Hulless) (w/w) soil-sand mixture containing 8 mg P kg^{-1} soil (extraction by 0.5 M NaHCO_3 , (Olsen et al., 1954)). The soil received either nil or 60 mg P kg^{-1} that was mixed into the soil as KH_2PO_4 . Plants were grown under controlled conditions at 16 h/8 h day/night and 22°C (cv. Rolap) or 21°C/15°C (cv. Black Hulless). For barley cv. Rolap at 2 weeks after sowing, half of the plants at nil P received 60 mg of P/kg soil as a KH_2PO_4 solution. Three pots of each P treatment were harvested sequentially as follows: P sufficiency (control), P limitation, P replenishment, +1 h, +3 h, +12 h, +24 h and +48 h. Each pot contained two barley plants. For barley cv. Black Hulless at both 10 and 17 days after sowing, each pot received 45 mg N/kg as an NH_4NO_3 solution. At 20 days after sowing, half of the plants at nil P received 60 mg of P/kg soil as a KH_2PO_4 solution. Three pots of each P treatment were harvested sequentially as follows: P sufficiency and P limitation, 10 days post sowing (das), 15 das, 20 das +1 h, 21, and 23 das; + P replenishment, 20 das +1 h, 21 and 23 das. Each pot contained three barley plants.

Phosphate Measurement

The level of Pi in plant root and shoot samples was monitored by an inorganic P assay utilizing malachite-green/ammonium molybdate in 4 M HCl and 34% natrium citrate*2H₂O solutions (Lanzetta et al., 1979). Fifty milli gram of liquid N₂ frozen plant tissue was homogenized in a glass homogenizer in 1 ml of ice-cold 1 M HCl. After centrifugation, the supernatants were used for a micro-plate assay at room temperature. The standard curve was

constructed from a P-stock solution of 1 nmol/ μl KH_2PO_4 in two replicates. The samples were measured in two technical and three biological replicates. The OD₆₆₀ was read (Müller et al., 2004) using either a SpectraMax M5 Microplate Reader (Molecular Devices, LLC, USA) or Infinite F200 Pro (TECAN, Switzerland).

RNA Isolation

For the barley heat stress experiment, RNA isolation procedure was described previously (Kruszka et al., 2013, 2014). In brief, the RNA isolation method utilized a mixture containing a 38% v/v phenol solution saturated with 0.1 M sodium acetate (Roti Aqua Phenol, Roth, Karlsruhe, Germany), supplemented with 0.8 M guanidine thiocyanate, 0.4 M ammonium thiocyanate, 0.1 M sodium acetate, 5% v/v glycerol, 0.5% sodium lauroylsarcosine, and 5 mM EDTA. To remove polysaccharides, the Ambion Plant RNA Isolation Aid (Thermo Fisher Scientific, Lithuania) was

TABLE 1 | Sequences of used primers.

Name	Sequence 5' to 3'	Task
APO175	GGGATAACATCCCTGCTTCTGGTAGTC	3' RACE, <i>PHR1</i>
APO176	CATCCCTGCTTCTGGTAGTCAGATCC	3' RACE, <i>PHR1</i>
APO177	ATGAGATGAAGCTGGCTGGTTGAC	5' RACE, <i>PHR1</i>
APO178	GAATTGGAAGGCTGAACCATGGAC	5' RACE, <i>PHR1</i>
APO273	CCATGATGTACATTTGCACAAACCACCTA	3' RACE, <i>PHO2</i>
APO274	CACGTACATATCAGATGATGGCTGCAAGAG	3' RACE, <i>PHO2</i>
APOYY1	CTCGGTCACTGAAGAAGAGGGAGCA	5' RACE, <i>PHO2</i>
APOYY2	CCCCTCCAAGAAACGACCAGC	5' RACE, <i>PHO2</i>
APO392	TGTAACCACGCGCACAGAA	PCR, <i>ADP</i>
APO410	CTTGAAGCGTATCGAGGAC	PCR, <i>ADP</i>
APO623	AAGGTCAAGGCAAGGAGGAA	RT-qPCR, pri-miR399c
APO624	CTGCCAATAAAGAGGAGCCC	RT-qPCR, pri-miR399c
APO627	CAGGGCAACTCTCCTTTGGCA	Probe, miR399c
APO697	TGTTTCTGATGGTCATCTAA	Probe for miR827
APO698	GCAACTCCCTCTTCTGCT	RT-qPCR, <i>Pht1;4</i>
APO699	TTCTGTCCTGGTCTCTGTT	RT-qPCR, <i>Pht1;4</i>
APO700	CAAAGGCAACTGACGAGTGA	RT-qPCR, <i>PHR1</i>
APO701	ATGACTGAGGAGCGAAAGGA	RT-qPCR, <i>PHR1</i>
APO702	TTGAAGTCCGACATCACAG	RT-qPCR, <i>NLA</i>
APO703	ACTCGCTCCATCTGCATTCT	RT-qPCR, <i>NLA</i>
APO704	GTAGGCTGACCTGCATCTG	RT-qPCR, <i>SPX-MFS</i>
APO705	ACCAATGGCTGAGGAAACAG	RT-qPCR, <i>SPX-MFS</i>
APO706	Described by (Huang et al., 2011)	RT-qPCR, <i>Pht1;6</i>
APO707	Described by (Huang et al., 2011)	RT-qPCR, <i>Pht1;6</i>
APO708	Described by (Huang et al., 2011)	RT-qPCR, <i>Pht1;1</i>
APO709	Described by (Huang et al., 2011)	RT-qPCR, <i>Pht1;1</i>
APO739	ATGGGTGCAGTTCTCTGAATG	RT-qPCR, <i>PHO1</i>
APO740	CTGAAGAACCTTGTGACACG	RT-qPCR, <i>PHO1</i>
APO741	AACITCATGAGCGTTTTGTGG	RT-qPCR, <i>PHR2</i>
APO742	TCGGGCAGTTCTGACTTCT	RT-qPCR, <i>PHR2</i>
APO743	AGGATGCTCTTGCTCGTGT	RT-qPCR, <i>SIZ1</i>
APO744	CAGCGGTCTTCATTCTGGAT	RT-qPCR, <i>SIZ1</i>

added, with the resulting supernatant being purified using a Direct-zolTM RNA MiniPrep kit according to the manufacturer's protocol (ZYMO RESEARCH, The Epigenetics Company, USA).

cDNA Synthesis and PCR Reactions

cDNAs used in RT-PCR and RT-qPCR analysis were synthesized using an oligo(dT)₁₈ primer, SuperScript III Reverse Transcriptase (Invitrogen, USA) and 3 µg of Turbo DNase (Ambion, Lithuania) treated RNA as a template. cDNAs were diluted four times, and 1 µl was used in RT-qPCR and diluted five times, with 2 µl used for RT-PCR amplification. PCR amplification of either an ubiquitin or ADP cDNA fragment were used as a positive control and control of the sample loading. The purity of cDNA samples containing no genomic DNA was controlled by PCR amplification of a barley *HvPHT1;1*; GenBank accession no. AF543197.1 promoter fragment (Schunmann et al., 2004b; Kruszka et al., 2014).

PCR Amplification

Primers for RT-qPCR amplification of *HvPHT1;1/HvPHT1;9*, *PHR1*, *PHO2*, *IPS1*, and ubiquitin were previously described (Pacak et al., 2010). The rest of the used primers are summarized in **Table 1**.

For RT-PCR, "Touchdown" PCR was applied (Tolia and Joshua-Tor, 2006). RT-qPCR was performed as previously described (Kruszka et al., 2013).

RACE and RLM-RACE were performed using a SMARTerTM RACE cDNA Amplification Kit (Clontech, Mountain View, CA, USA) and GeneRacer kit (Invitrogen), respectively (according to the manufacturers' protocol).

For RT-qPCR analysis, an Applied Biosystems 7900HT Fast Real-Time PCR System and SYBR Green Master Mix (Applied Biosystems) were used. Data was normalized to ADP levels. The results were presented as either $\log_{10}2^{(-\Delta Ct)} + 7$ or as fold changes as previously described (Kruszka et al., 2013). The R^2 values of analyzed data (≥ 0.997) were calculated with LinRegPCR software (Ramakers et al., 2003). Three biological replications were analyzed.

Northern Blot

Experiments were performed using either 50 µg RNA enriched in small RNA isolated from barley shoots (**Figure 6**), according to (Szarzynska et al., 2009; Kruszka et al., 2013) or 7.5 µg RNA enriched in small RNA isolated from barley roots (**Figure 10**), according to (Pall and Hamilton, 2008).

Transcriptome Analysis

Total RNA was isolated using the procedure described above. Isolated RNA samples were Turbo DNase (Ambion) treated and then phenol/chloroform purified. Three biological replications of barley shoots and two biological replications of barley roots harvested after 1 h of heat treatment were analyzed (as well as the control samples). Transcriptome libraries (strand-specific) were constructed and then sequenced by BGI Tech Solutions (Hong Kong) Co., Ltd. Clean reads were mapped to the reference barley genome¹ (Ensembl Plants, version: 082214v1) using TopHat2 software (Kim et al., 2013). Statistical analysis was performed to identify gene-expression differences between the samples studied (TEAM, 2010; Pinheiro et al., 2014). Numbers of reads for each gene mapped to the reference genome were counted using HT-Seq software (Anders et al., 2015). The script was run for each fastq file for every biological replicate from every condition. Afterward, all of the results were gathered in tables – one table per one comparison (e.g., a table with two biological replicates from roots treated with high temperature and two replicates from control roots). These tables were then fed in a DeSeq – R package suitable for analysis of differential gene expression based on the negative binomial distribution (Anders and Huber, 2010). The data used in this study have been deposited under NCBI GEO accession GSE82134.

Gene Identification

Transcriptomic analysis met some difficulties caused by sequence similarities between gene paralogs. For instance, the MLOC_28370 gene encodes a 369AA protein identical

¹http://plants.ensembl.org/Hordeum_vulgare/Info/Index

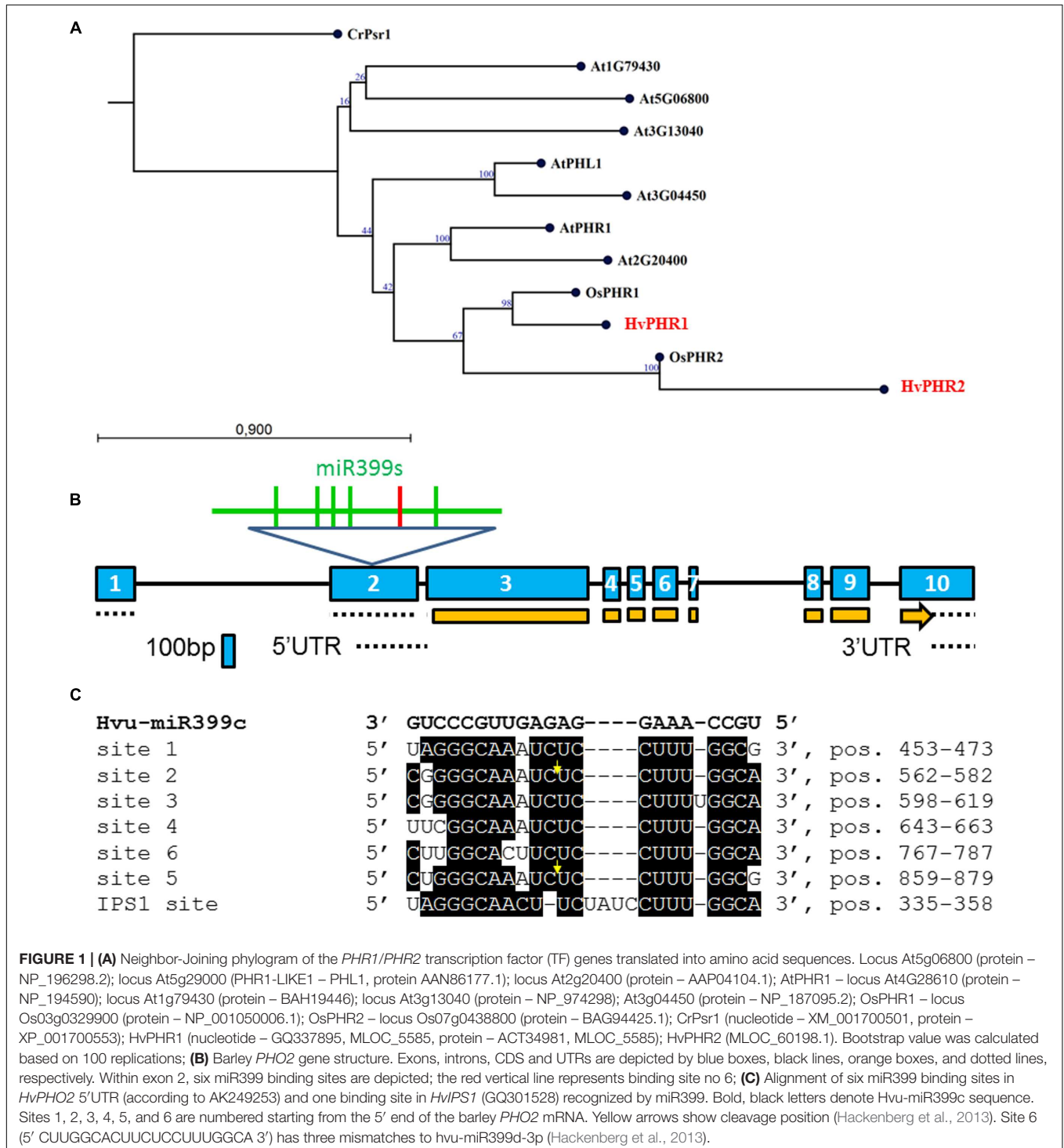
TABLE 2 | Analyzed Pi-related genes with their Ensembl Plants database numbers and characteristics.

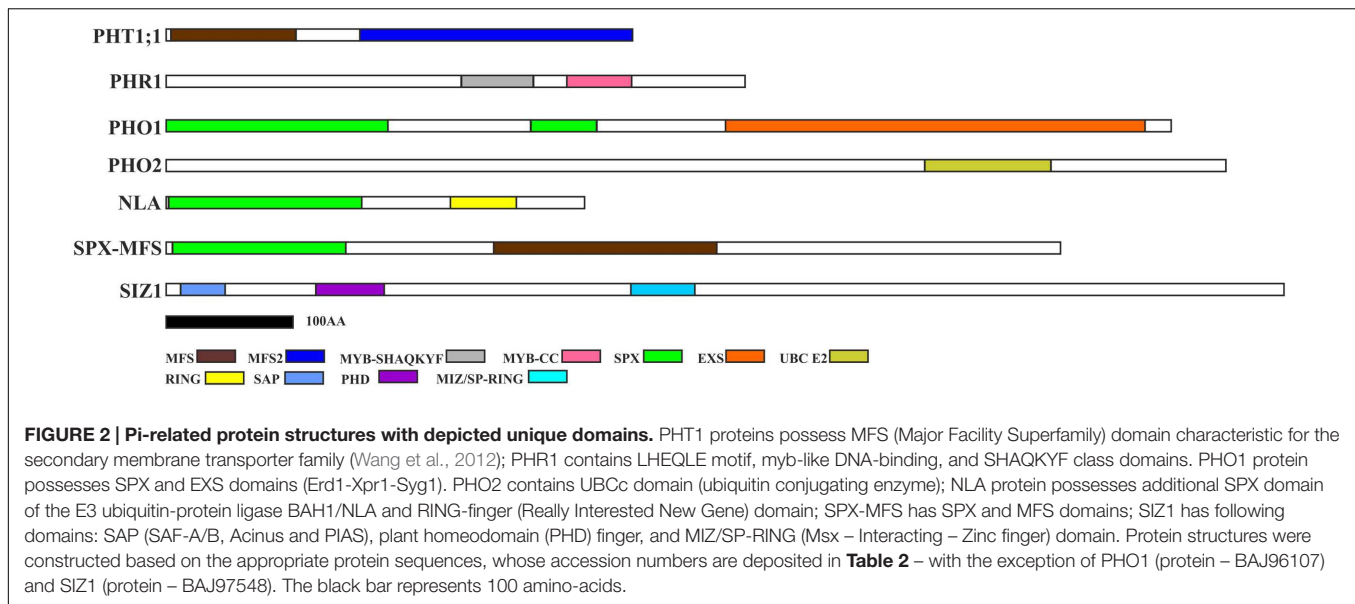
Gene	Ensembl Plants	Function	Notes
<i>PHT1;1</i>	MLOC_28370.1	Pi transporter	four paralogs in barley
<i>PHT1;4</i>	MLOC_6187	Pi transporter	
<i>PHT1;6</i>	MLOC_80912.2	Pi transporter	
<i>PHR1</i>	MLOC_5585	TF, ortholog of <i>OsPHR1</i>	
<i>PHR2</i>	MLOC_60198.1	TF, ortholog of <i>OsPHR2</i>	
<i>PHO1</i>	MLOC_12153.1	Pi transporter, homologous to rice <i>PHO1;2</i>	
<i>PHO2</i>	MLOC_53410.2	ubiquitin-conjugating enzyme E2, catalytic (UBCc) domain	targeted by miR399
<i>IPS1</i>	not identified in Ensembl Plants	binds miR399	position chr 4, 510585405-510586016
<i>NLA</i>	MLOC_52462.2	E3 ubiquitin-protein ligase, SPX_BAH1-like, RING domains	no miR827 binding site in barley
<i>SPX-MFS</i>	MLOC_57566.4	Pi sensing and transport SPX, MFS domains	targeted by miR827
<i>SIZ1</i>	MLOC_38182.4	PHR1 sumoylation	
Pre-miR399c	not identified in Ensembl Plants	miR399c targets <i>PHO2</i>	position chr 2, 558571927-558572025

Barley genes PHR1, PHR2, PHO1, NLA, SPX-MFS, SIZ1, and MIR399c were identified based on their similarity to known orthologs and then allocated to a particular MLOC number.

to HvPHT1;1 (GenBank AAN37900.1; AF543197), HvPHT1;2 (AAO72434.1, AY187020), and HvPHT1;9 (GenBank CAP17759; AM904733), both on nucleotide and amino-acid levels. Thus, transcriptomic reads reflect expression of these three Pi transporters. To distinguish the expression of the *PHT1;1* gene from their paralogs particular Pi transporter, two sets of RT-qPCR primers were used for analysis. We analyzed both

PHT1;1/PHT1;9, and concrete *PHT1;1* gene expression. We identified the putative barley *PHR1* gene by comparison with the well-known *Psr1* (Phosphate starvation response 1) and *PHR1* genes from *Chlamydomonas reinhardtii*, rice, and *Arabidopsis*. We found several barley ESTs (BU993345, BU970600 and BF621611). In further steps, these ESTs were clustered into one mRNA fragment. Based on this mRNA fragment sequence, a pair





of primers was designed. The amplified PCR product (923 bp in length) – i.e., fragment of *HvPHR1* – was sequenced as previously described (Pacak et al., 2010). To determine full-length *HvPHR1*, 5' and 3' RACE experiments were conducted. The coding sequence had 1356 bp and can encode a 451AA sequence that has 99% identities to MLOC_5585. Barley *PHO1* – MLOC_12153.1 contains an amino acid sequence with 298/477 (62%) and 432/475 (91%) identity (blastp analysis) to the *Arabidopsis* PHO1 protein (GenBank NP_188985.2) and *Brachypodium distachyon* phosphate transporter PHO1-2 (GenBank XP_003570364.1), respectively. We found contig TCONS_00089457 that contains the mature barley miR399c sequence. The pre-miR399c sequence was identified in the transcriptomic data derived from heat-treated shoot tissue – TCONS_00089457. This sequence was mapped to morex_contig_188578 CAJW010188578 carma = 2HL (ipk-gatersleben database). The longest derived sequence that formed a stem-loop structure was used for construction of the pre-miR399c. Using 5' RLM-RACE, two TSS of the barley *PHO2* gene were identified at positions 447916090 (+) and 447916332 (+) on the chromosome 1. Promoter region (1422 bp) upstream of the 2nd TSS (heterogenic) was used for promoter elements analysis. Later, a *PHO2* genomic sequence was established based on 5' and 3' RACE analysis and morex_contig_38340 CAJW010038340 carma = 1H DNA sequences deposited at the ipk-gatersleben database.

Software

The alignment and trees were constructed using CLC Main Workbench 7 software with the following parameters: (Kimura-2 parameters) and the consensus trees (neighbor-joining) with bootstrap value = 100 replications. Stem-loop structures were constructed using Folder Version 1.11 software with a RNAfold algorithm². Significance of the results (*p*-value) was analyzed

using student *t*-test. Statistical RT-qPCR analyses were performed using $\log_{10}2^{(-\Delta Ct)} + 7$ values.

Database Searching

We searched the following databases: <http://plants.ensembl.org/index.html>, www.mirbase.org, and GenBank and IPK Gatersleben³. For promoter regulatory element analysis, a New PLACE (A Database of Plant *Cis*-acting Regulatory DNA Elements) database was used (Higo et al., 1999).

Accession Numbers

Studied genes: Ensembl Plants database – Heat shock protein 90.1 – MLOC_5618, other accession numbers are deposited at **Table 2**. GenBank database: *HvPHT1;1* – AF543197, AAN37900.1; *HvPHT1;2* – AA072434.1, AY187020; *HvPHT1;4* – AY187024.1, AA072437.1; *HvPHT1;6* – FM866444.1, CAS02288; *HvPHT1;9* – AM904733, CAP17759; *HvPHR1* – GQ337895, ACT34981; *HvPHR2* – AK363485.1, BAJ94688.1; *HvPHO1* – AK364904.1, BAJ96107; *HvPHO2* – AK249253 (cv. Haruna Nijo); *HvPHO2* – GQ861514.1, ACV72276 (cv. Black Hullless); *OsPHO2* – LOC_Os05g48390 (AU032431); *AtPHO2* – AT2G33770.1; *HvNLA* – AK354779, BAJ85998.1; *HvIPS1* – GQ301528; *HvSIZ1* – AK366345.1, BAJ97548; ADP – ADP-ribosylation factor 1-like protein gene – AJ508228.2. The use of the Hsp17 gene as a “heat” stress gene marker (GenBank: AK252765) was described previously (Kruszka et al., 2014).

RESULTS

Identification of Barley Pi-related Genes

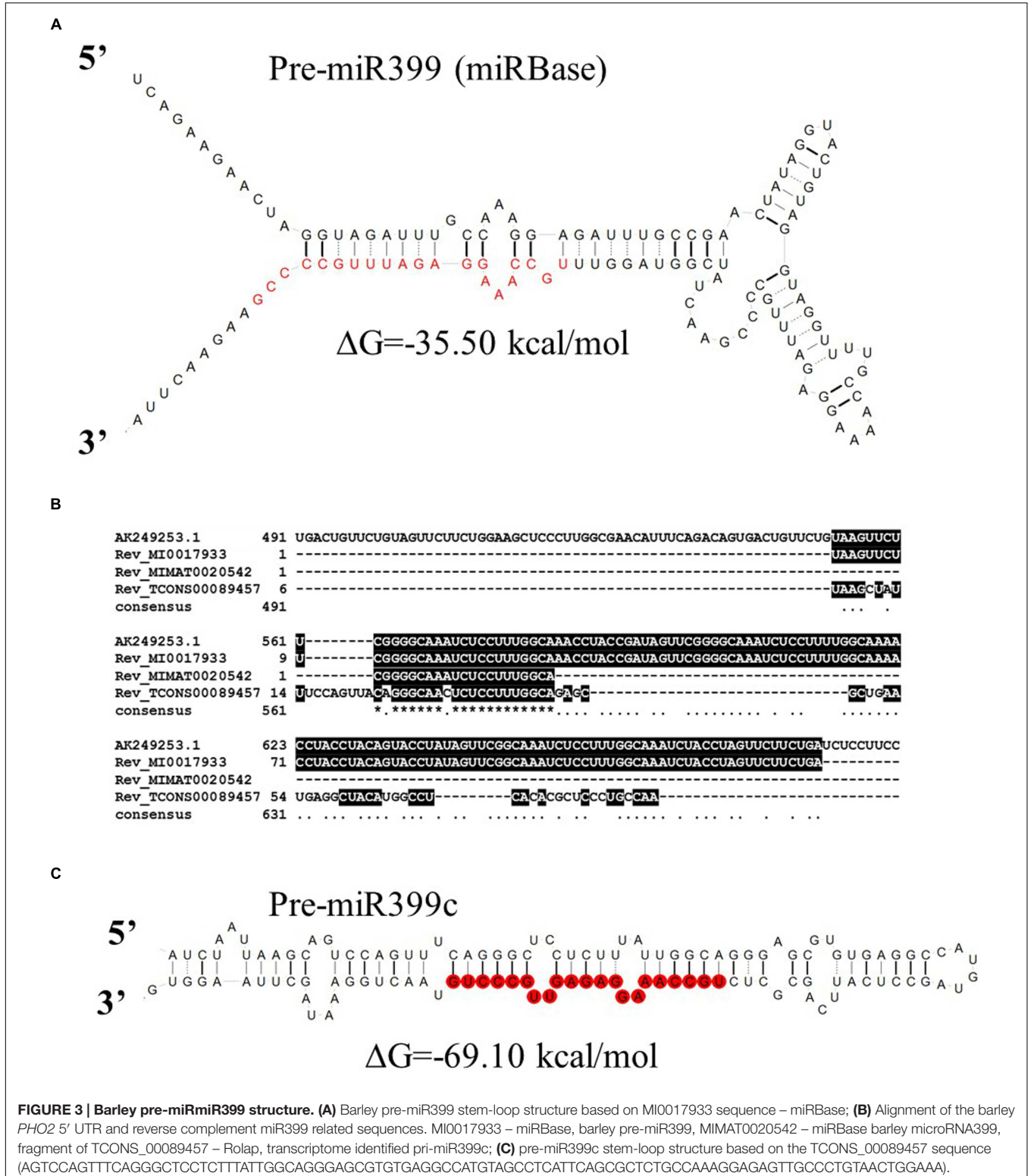
GenBank and Ensembl Plants databases were searched to identify barley Pi-related genes. Several Pi-related barley genes like

²<http://www.ncrnalab.dk/#rnafolder/rnafolder.php>

³<http://webblast.ipk-gatersleben.de/barley/>

Pi transporters (*PHT1;1*, *PHT1;4*, *PHT1;6*) and *PHR1*, *PHO2* were described previously (Schunmann et al., 2004a,b; Pacak et al., 2010; Preuss et al., 2010). **Table 2** shows all barley genes identified by us as well as other Pi-related barley genes.

A phylogram was created to show the similarities of the identified barley PHR1/PHR2 TFs to the well-known PHR proteins from rice and *Arabidopsis* (**Figure 1A**) (Wang et al., 2014, 2015). Additionally, we have included the *Arabidopsis*



PHR1-like protein (PHL1) and other MYB-CC proteins (Bustos et al., 2010).

Two splice variants of *PHO2* barley mRNA encoding 847AA and 544AA long proteins are deposited in Ensembl Plants. We compared *PHO2* CDS derived from MLOC_53410.2, with *PHO2* CDS derived from cv. Haruna Nijo, cv. Rolap, and cv. Black Hulless, and found that CDS from Haruna Nijo, and Rolap were identical, differing from Black Hulless in seven nucleotide substitutions (three synonymous and four non-synonymous mutations). The rice *PHO2* ortholog contains 11 exons and encodes an 876AA protein (Hu et al., 2011). In *Arabidopsis*, the *PHO2* gene has nine exons and encodes 907AA. The barley *PHO2* gene is located on chromosome 1, is 7320 bp in length, and contains ten exons (Figure 1B). The 5' UTR of barley *PHO2* mRNA contains six potential miR399 recognition sites (Figure 1C). Only two of them were found to be cleaved in barley (Hackenberg et al., 2013). The schemes of the analyzed Pi-related proteins with depicted unique domains are presented in Figure 2.

Ten *MIR399* genes and one *MIR827* gene have been identified in the barley genome (Hackenberg et al., 2013). Both are induced by Pi deficiency (Hackenberg et al., 2013). In miRBase, there is only one pre-miR399 precursor available (MI0017933) from which mature miR399 could be diced out. This proposed

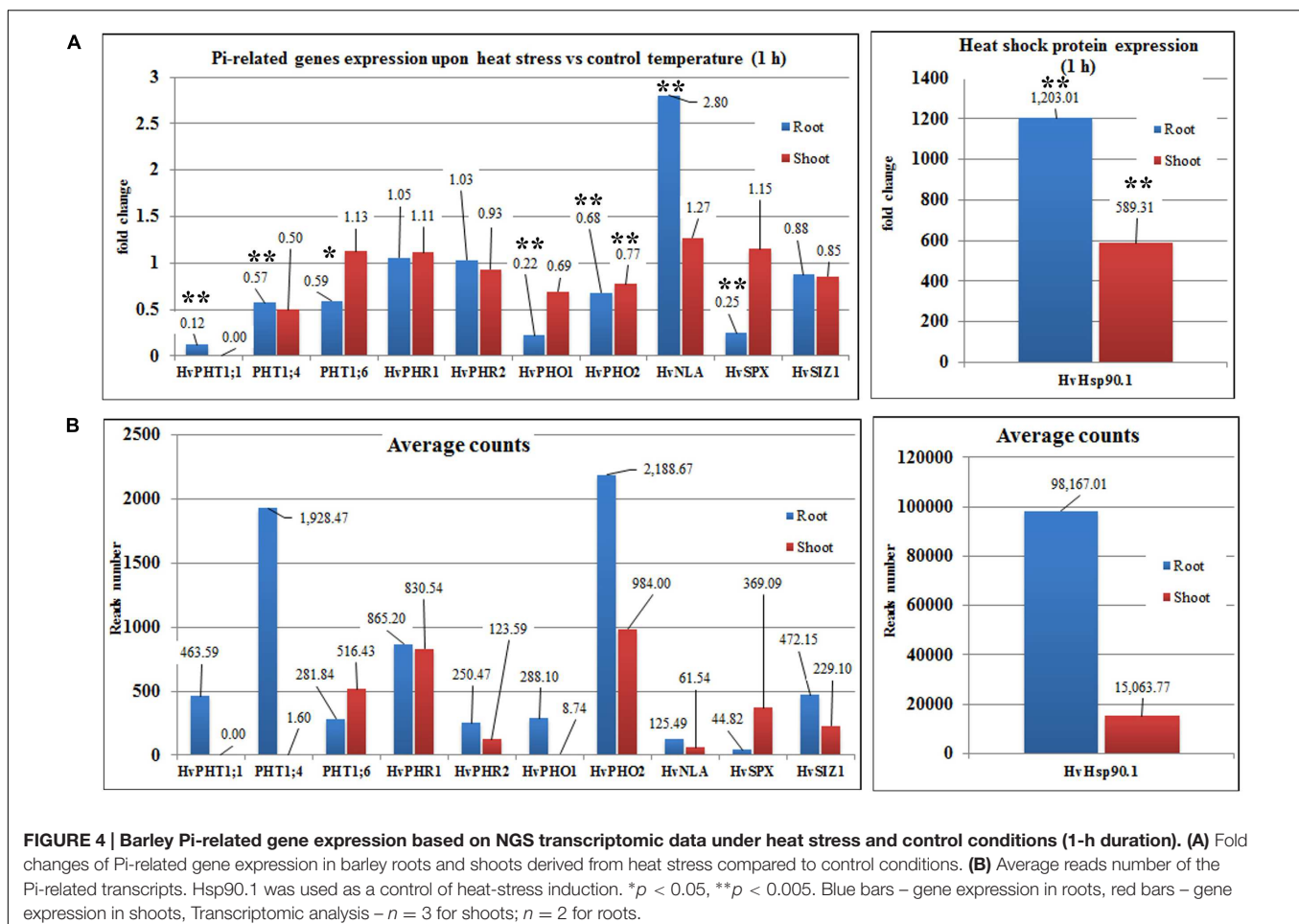
pre-miR399 stem-loop structure does not contain the typical features of plant pre-miRNA (Figure 3A) (Bologna et al., 2009). Since it is possible that the miR399-3p sequence is unusually processed in barley shoots (Hackenberg et al., 2013), we decided to analyze it in more depth. We found that this sequence is, in fact, the reverse complement fragment of the *PHO2* 5' UTR containing miR399 binding site no 2 (Figure 3B). We found a locus encoding the miR399c sequence and were able to fold it into a classical stem-loop structure with free energy $\Delta G = -69.10$ kcal/mol (Figure 3C).

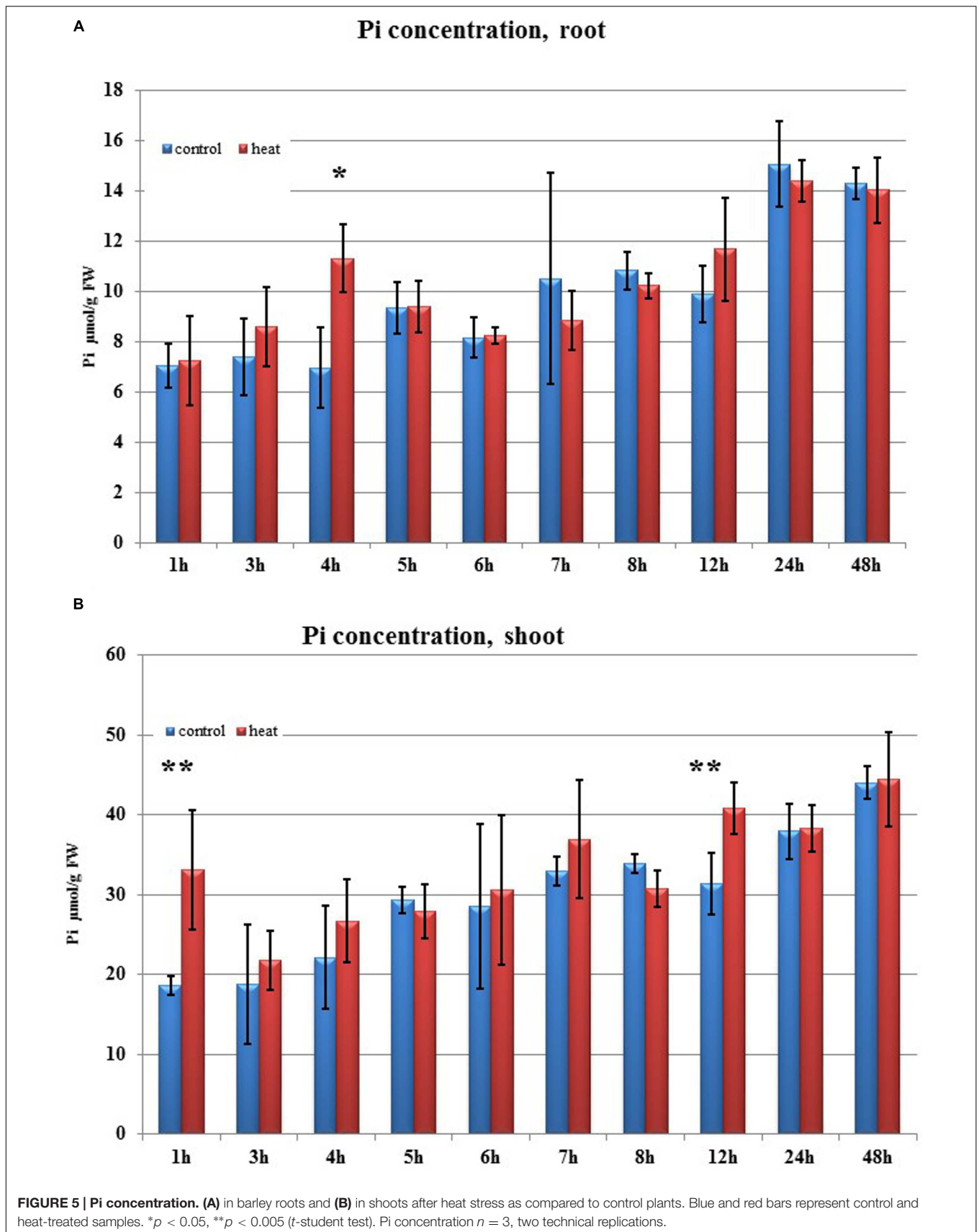
Our bioinformatics search allowed us to identify all known important players involved in Pi homeostasis maintenance in barley plants.

Heat Stress Affects the Expression of Pi-related Genes

To test the heat-stress influence on Pi-related gene expression and Pi concentration, 2-week-old barley plants were stressed by exposure to a 35.5°C temperature for two days. Root and shoot samples were collected after 1, 3, 4, 5, 6, 7, 8, 12, 24, and 48 h.

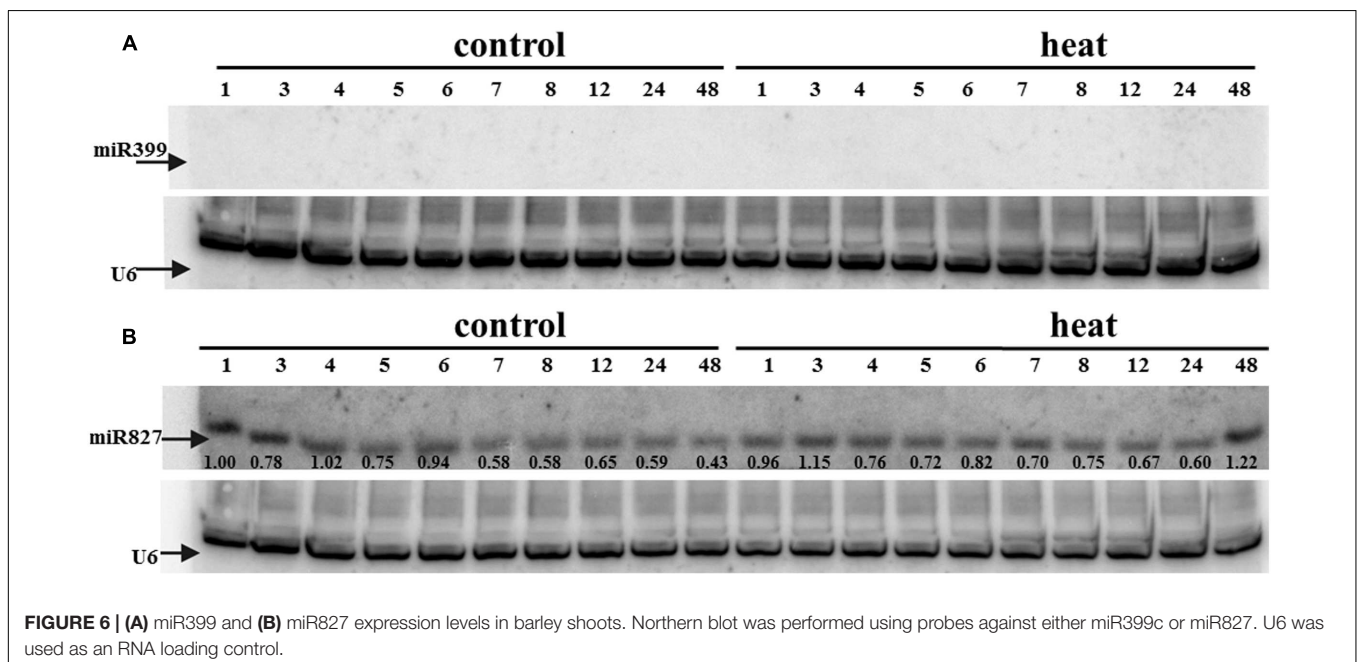
Transcriptome deep sequencing was applied to RNA isolated from samples exposed to one hour of heat stress and from





un-stressed control plants. Subsequently, our analysis was focused on the expression of Pi homeostasis maintenance-related genes. After one hour of heat stress, the expression of *PHT1;1*, *PHT1;4*, *PHT1;6*, *PHO1*, *PHO2*, and *SPX-MFS* genes was decreased in roots. Only the *NLA* gene showed an upregulated expression in the barley roots. The expression pattern of the *PHR1*, *PHR2*, and *SIZ1* genes was not significantly influenced. In contrast, the expression of most analyzed genes in shoots remained unchanged after one hour of heat stress. The only downregulated Pi-related gene was *PHO2* (Figure 4). The changes revealed in the transcriptomic data were confirmed by RT-qPCR (Supplementary Figures S1B–E,H–O,Q,R). The downregulated expression of genes in roots appeared to be permanent, as the *SPX-MFS* and *PHO2* genes remained downregulated after 48 h of heat stress. Since *PHT1;1* and *PHT1;9* CDSs have identical sequences, RT-qPCR designed for their 3' UTR fragment amplification was performed, which allowed us to discriminate between the expression of these two genes. The data shows that both *PHT1;1/PHT1;9* (and also the *PHT1;6*, *PHO1*, *PHR2*, and *SIZ1* genes) stay at the lower expression level as compared to control plants. The *PHT1;4* gene shows a more-complex expression pattern; it was downregulated at 1 and 3 h, but up-regulation between 4 and 12 h of heat duration was also observed (Supplementary Figure S1C). In roots at 4 h time-point we observed the increased Pi concentration (Figure 5A). This correlated with *PHT1;4* significant up-regulation at this time-point. Since at 6 h time-point also *PHT1;4* gene expression was higher in heat stressed plants compared to the control ones, other factors could contribute to a mechanism of keeping the Pi concentration on the same level. The *NLA* gene was always upregulated, with the highest expression level at 24 h (Supplementary Figure S1H). Surprisingly, *IPSI* was also upregulated after 6 h of heat stress,

with the highest expression level at 48 h. The expression of *PHO2* expression in roots and shoots was always downregulated, with the highest decrease at 12 h and 24 h in roots and shoots. The *PHT1;6* expression in shoots shows the highest decrease in expression at the 12 h time point (Supplementary Figure S1M). In the case of other shoot-expressed Pi-related genes, the expression remains almost at the same level. The only exception is present at the 48 h time point for *NLA*, *SPX-MFS*, and *PHR1* (also 12 h) genes, which are downregulated. *IPSI* expression is almost at the same level during the first eight hours but later decreased. Transcriptomic data revealed that in shoots there were no *PHT1;1*, *PHT1;4* genes expression; *PHO1* expression was also very low compared to the root expression. That is why even subtle changes in *PHO2*, *PHT1;6* genes expression could influence Pi concentration. At 1 and 12 h time-points we observed that both these genes had been affected by heat stress. At 1 h time-point transcriptomic data showed significant decreased expression of *PHO2*. RT-qPCR confirmed the transcriptomic data but probably the fold change was too low to be significant in RT-qPCR analysis. Interestingly RT-qPCR showed significant increased *PHT1;6* gene expression and it could be coupled with an increased Pi level (Figure 5B). At 12 h time-point we observed significant decreased expression of *PHO2* and *PHT1;6*. Previously we noted that decreased level of *PHO2* gene in barley led to an increase of Pi concentration (Pacak et al., 2010). Further studies on protein level as well as identification of the *PHO2* “partner proteins” in shoots are necessary to reveal the role of *PHT1;6* in Pi concentration homeostasis in shoots. We were not able to detect mature miR399 in barley shoots grown in heat stress and control conditions (Figure 6A). The expression of the miR827 fluctuates in control conditions, and these fluctuations are also observed in heat-treated plants (Figure 6B). This observation allowed us to



draw the conclusion that the changes in *PHO2* and *SPX-MFS* gene expression in barley shoots (their mRNAs are targeted by miR399 and miR827, respectively) result from transcriptional rather than post-transcriptional regulation. Surprisingly, the observed gene-expression changes in roots do not affect the final root Pi concentration. We noted a significant Pi concentration increase at the 1- and 12-h time-points of heat stress in barley shoots, but not at other time-points (Figures 5A,B). This data shows that barley plants exposed to heat stress modulate the expression level of Pi-related genes to stabilize Pi concentration. Although the Pi concentration at the end of 48 hours of heat stress was similar to that of the control plants, heat stress inhibited barley growth and leaves no 4 development (Figures 7A and 8). The leaves of barley plants are shorter one week after the end of the heat stress period (leaf number four), and we observed faster leaf senescence (leaf number one, Figure 8). Growth impairment and premature

senescence may result from the macronutrient homeostasis disturbances resulting from heat-stress-affected gene-expression regulation.

Dynamic Changes in Expression Pattern of Barley Pi-Related Genes upon Phosphate Starvation and Pi Re-supply

Analysis of Pi-related barley gene expression under heat stress revealed fast and dramatic changes at the transcriptional level, which finally led to the stabilization of Pi concentration in the plant tissues. To learn more about the regulation and pattern of expression of Pi-related genes in barley, we studied the same set of genes for their expression pattern in roots under control conditions, Pi starvation, and Pi re-supply. Plants were grown at P-limiting conditions and then exposed to P sufficiency. Time-course changes in gene expression were compared to the changes

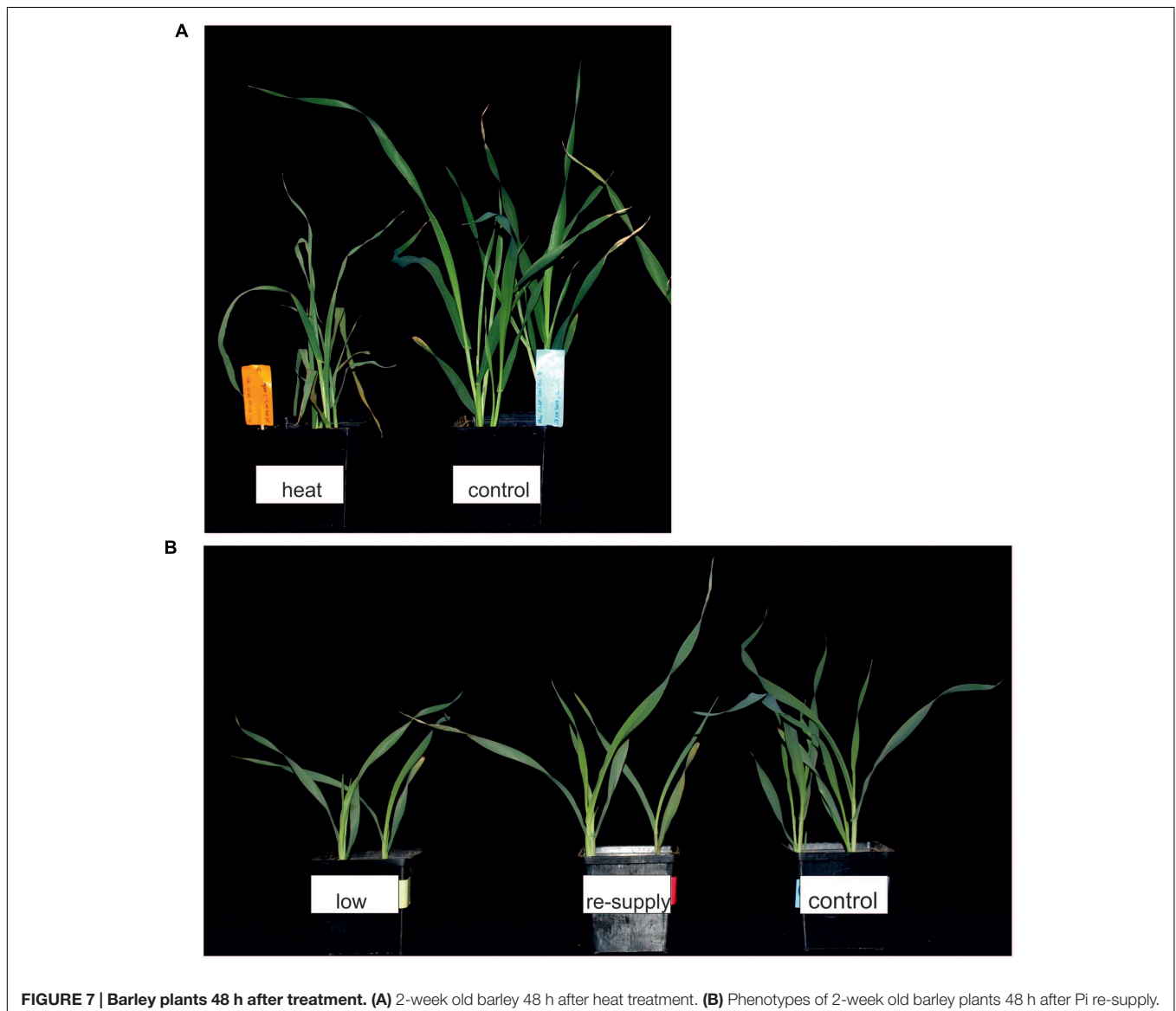


FIGURE 7 | Barley plants 48 h after treatment. (A) 2-week old barley 48 h after heat treatment. **(B)** Phenotypes of 2-week old barley plants 48 h after Pi re-supply.

in parallel sets of plants maintained at P-limiting or P-sufficient conditions (control conditions).

In 2-week old barley cv. Rolap *PHT1;1*, *PHT1;4*, and *PHT1;6* showed increased expression under low Pi conditions compared to the control conditions. Pi-re-supply down-regulated Pi transporters expression what was observed after 3 h of the Pi re-supply (Figure 9). Especially *PHT1;6* gene was sensitive to the Pi re-supply. Its expression after 48 h was even lower in Pi re-supplied plants compared to the control ones (Figure 9C). After 48 h of the Pi-re-supply *PHT1;1* gene expression was not distinguishable from plants grown under low Pi. During heat stress we observed that *PHT1;1* gene was the most affected *PHT1* transporter gene by heat stress. It showed plant flexibility in gene expression regulation upon different stresses in order to control Pi homeostasis. Among two genes which mRNA levels are controlled by microRNA, *SPX-MFS* showed higher sensitivity to two abiotic stresses applied. It was constantly downregulated during heat stress and up-regulated after Pi-re-supply at 3 h and 48 h time-points (Figure 9G). *PHO2* expression was even lower in Pi re-supplied plants compared to the control ones (Figure 9F). It showed that in the experimental conditions Pi did not influence *PHO2* expression. There was no effect of Pi concentration on *PHR1*. Compared to heat stress we observed different *PHO1* expression change (Figure 9E). During heat stress at 1 h time

point *PHO1* expression was down-regulated but after Pi re-supply its expression was even increased compared to the control plants. It could be explained by the fact that plants produced more *PHO1* protein to transport available Pi from roots to shoots. After 12 h *PHO1* expression in Pi re-supplied plants reached the control level. The weight of barley plants from low Pi conditions was 62% of the control plants weight. The phenotypes of the Pi control, Pi limitation, Pi re-supplied plants are presented in Figure 7B.

In our previous work we silenced *PHO2* gene using VIGS approach and observed Pi concentration increase in barley shoots and the *PHO2* downregulation in barley roots (Pacak et al., 2010). For this purpose we used Black Hulless barley cultivar. We used the same cultivar to analyze Pi-related gene expression under different Pi regime. Moreover we kept plants longer (23 days) in low Pi condition to observe more remarkable differences in Pi-related genes expression. Root material was collected at 10, 15, 20 das +1 h after Pi re-supply, 21, and 23 das. RNA was isolated from root tissue, and expression was analyzed for a set of Pi-related genes. The greatest differences in gene expression was observed between plants grown under P-sufficient and P-limiting conditions for *IPSI1*, *PHT1;1*, and *pr-miR399c*. At control conditions, the highest decrease ranged from 1349-, 447-, and 347-fold reduction, respectively, as compared to

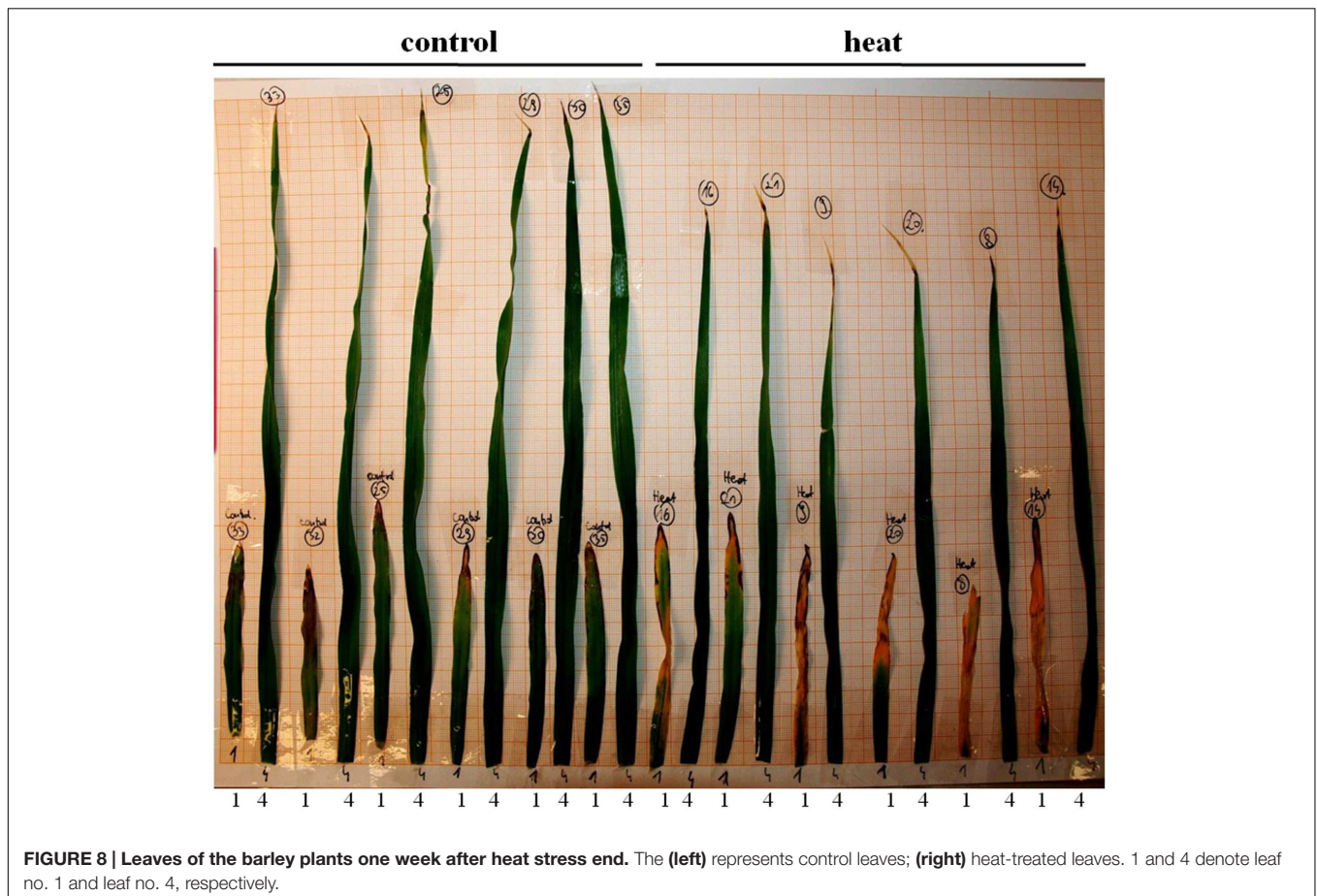


FIGURE 8 | Leaves of the barley plants one week after heat stress end. The (left) represents control leaves; (right) heat-treated leaves. 1 and 4 denote leaf no. 1 and leaf no. 4, respectively.

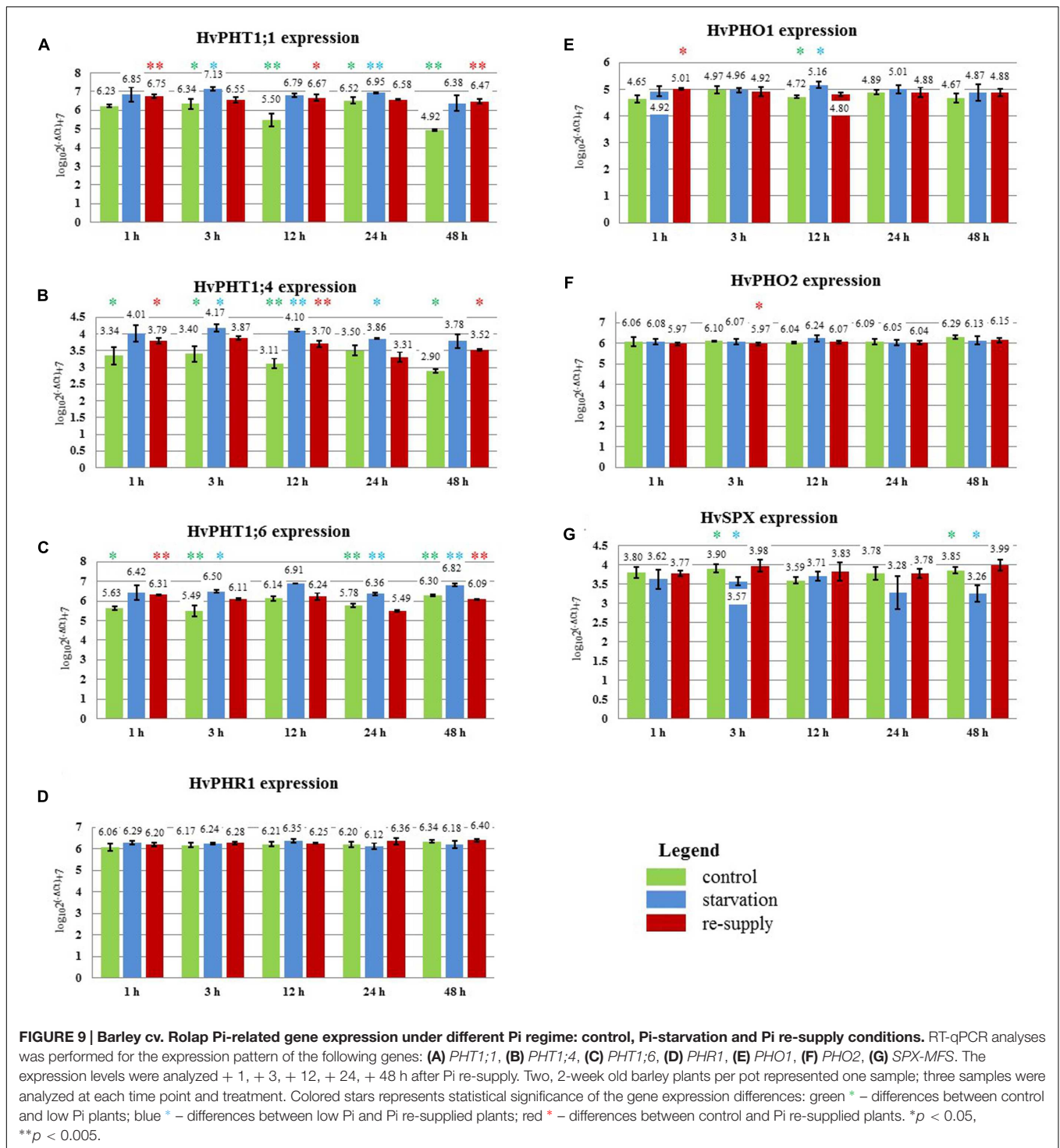
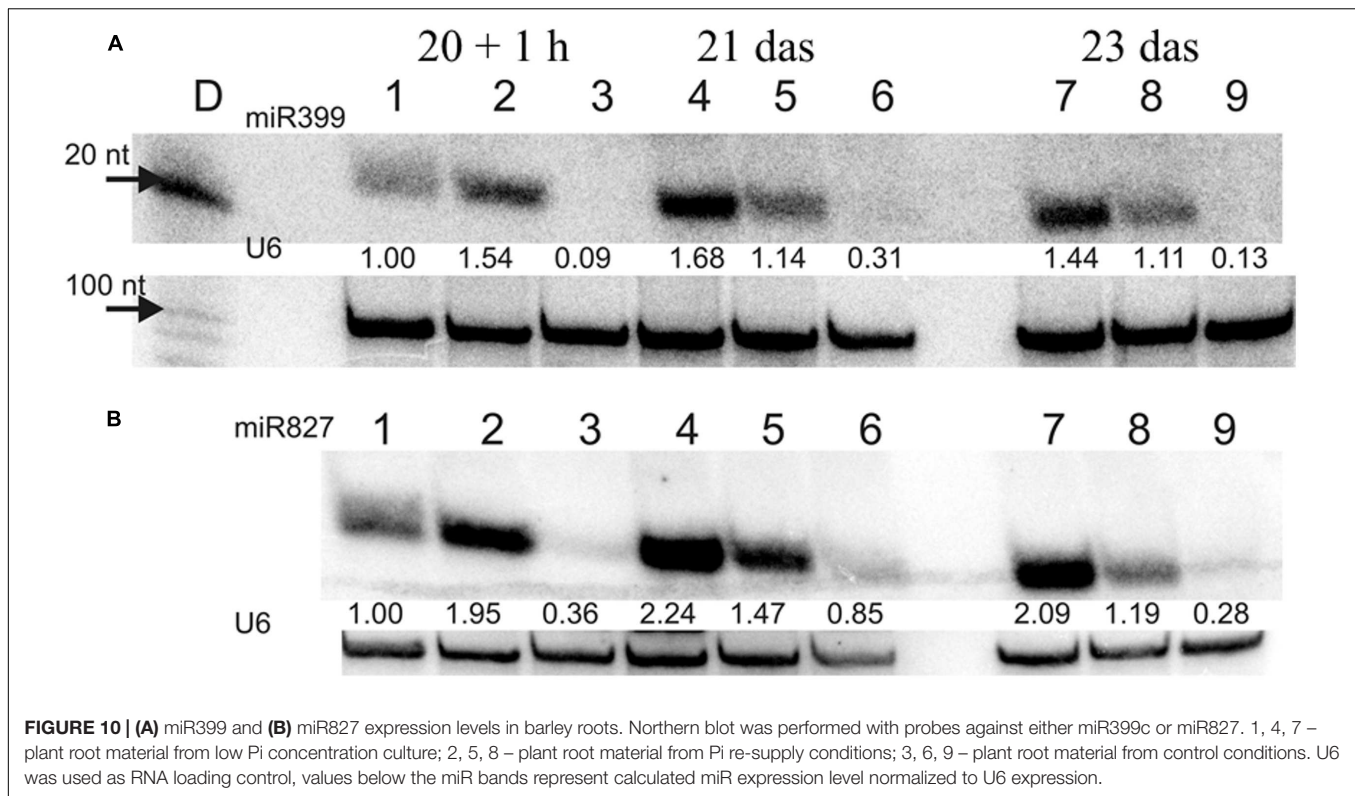


FIGURE 9 | Barley cv. Rolap Pi-related gene expression under different Pi regime: control, Pi-starvation and Pi re-supply conditions. RT-qPCR analyses was performed for the expression pattern of the following genes: (A) *PHT1;1*, (B) *PHT1;4*, (C) *PHT1;6*, (D) *PHR1*, (E) *PHO1*, (F) *PHO2*, (G) *SPX-MFS*. The expression levels were analyzed + 1, + 3, + 12, + 24, + 48 h after Pi re-supply. Two, 2-week old barley plants per pot represented one sample; three samples were analyzed at each time point and treatment. Colored stars represents statistical significance of the gene expression differences: green * – differences between control and low Pi plants; blue * – differences between low Pi and Pi re-supplied plants; red * – differences between control and Pi re-supplied plants. * $p < 0.05$, ** $p < 0.005$.

Pi-starvation condition (Supplementary Figures S2A,K,L). After Pi re-supply, we observed a weaker reduction of *IPSI*, *PHT1;1*, and pri-miR399c (which was 26-, 35-, and 44-fold, respectively). These reduction levels were similar to those observed for *PHO1* (33-fold, 24 h) and *PHT1;1* (20-fold, 12 h) during the heat stress (Supplementary Figure S1B,K). Interestingly, *IPSI* expression was downregulated after Pi re-supply but upregulated

11-fold (48 h) after heat stress (Supplementary Figures S1G and S2L). Expression of the *PHO2* and *SPX-MFS* decreased in Pi-limited plants at the early steps of development; but later, their expression reached the same levels as in the P-fed controls (Supplementary Figures S2G,I). The expression of *PHO1* is not changed significantly in different Pi-regime conditions in barley roots. During heat stress both *PHT1;1* and *PHO1*



genes expression is downregulated, but Pi concentration affects only the *PHT1;1* expression. No reduction of *PHO1* expression may prevent Pi-over accumulation after Pi re-supply treatment. The higher expression of pri-miR399c at the early stages of development correlated with the lower expression of the *PHO2* in Pi limited (compared to control plants). At later growth stages, the expression of *PHO2* approached the level in the P-sufficient controls plants, although the abundance of pri-miR399c and mature miR399 was still on a high level in Pi starvation condition (Supplementary Figure S2K and **Figure 10A**). This suggests that the role of miR399 in *PHO2* gene-expression regulation is not crucial at the latter developmental stages. Accordingly, Pi re-supply did not change the level of *PHO2* expression significantly, although the expression of pri-miR399 and, consequently, mature miR399 was strongly decreased (Supplementary Figure S2K and **Figure 10A**). Like the mature miR399, miR827 also showed a reduced level after Pi re-supply, corresponding to a reduction to 57% at 3 days after Pi re-supply compared to the P-limiting plants (**Figure 10B**). Pi re-supply resulted in strongly increased Pi concentrations in barley roots (Supplementary Figure S2M), but the reached level was similar to the Pi concentration level in the control plants. Harvested shoot weights were suppressed by Pi limitation already by 15 das, representing only 40% of the weight of the P-sufficient control plants at 23 das (**Table 3**). The re-supply of P-to-P limited plants at 20 das produced a marked growth response over the subsequent three days. Symptoms of early senescence were observed for the older leaves of P-limited plants (**Figure 11**).

DISCUSSION

Studies of the expression of phosphate-related genes in crops are crucial to understand the complexity of adaptive reactions in plants grown under phosphate depletion (Baker et al., 2015). This is especially important, due to the fact that phosphate rock for fertilizer production is a limited resource that requires careful management, since it is estimated that all cheap forms of phosphorus will soon be exhausted (Cordell and White, 2014). It is known that heat stress has a big impact on plant growth. The warming climate is one of the biggest challenges for agriculture, as one degree increase in temperature may decrease crop productivity by as much as 10% (Zinn et al., 2010). Heat stress inhibits plant functions in many ways. In barley, it reduces tillering and decreases plant height and spike length (Abou-Elwafa and Amein, 2016). This work shows that a heat-stress period influenced barley morphology such that, after one week, specific leaves were shorter than the corresponding leaves of control plants, and the oldest leaf showed more severe senescence (**Figure 8**). Heat stress affects the expression of many genes, including those involved in calcium and sugar signaling in wheat, TFs (Hsf, NAC, AP2/ERE, WRKY, MYB, and C_2H_2) in rice panicles, or six different peroxidases in switchgrass (Qin et al., 2008; Zhang et al., 2012; Li et al., 2013; Banerjee and Roychoudhury, 2015). The predicted increasing exposure of crop plants to heat stress requires an understanding of how they regulate macronutrient homeostasis under such circumstances. We have shown that heat stress affects the expression of Pi-related genes. This is

TABLE 3 | The weight of control, low Pi, and Pi-supply conditions growing plants.

Harvest time	Shoot fresh weight (g/pot)		
	Control plants	low Pi	Pi re-supply
10 das	1.33 ± 0.06	1.17g ± 0.15	–
15 das	3.67 ± 0.45	2.53 ± 0.38	–
20 das+1 h	8.73 ± 1.24	4.57 ± 0.32	5.67 ± 0.67
21 das	11.10 ± 0.46	4.43 ± 0.29	7.60 ± 0.53
23 das	14.77 ± 1.55	5.80 ± 4.16	11.43 ± 1.69

Values are means ± SD; n = 3.

especially visible in root tissues. Already after one hour of heat stress, we observed decreased levels of *PHT1;1*, *PHT1;4*, and *HvPHT1;6*, which should result in a decreased level of Pi concentration in roots. However, Pi concentration did not change. This could be explained by the reduced expression levels of *PHO1*, *PHO2*, and *SPX-MSF* genes. The *pho1* mutant in *Arabidopsis* is defective in Pi transport from root to shoot, resulting in a strong Pi deficiency in shoot tissue (Stefanovic et al., 2011). On the other side, *PHO1*-gene over-expression in *Arabidopsis* leaves led to the increased export of Pi into the xylem vessels (Stefanovic et al., 2011). Barley *PHO1* gene expression is weakly responsive to Pi starvation (similar to *Arabidopsis*). The heat-stress impact on *PHO1* gene expression shown here reveals that this gene represents an important Pi homeostasis regulatory element (Hamburger et al., 2002). This data may explain why Pi concentration in barley roots is non-sensitive to heat stress. We assume that Pi transport to the shoots is inhibited during heat stress. The observed decrease of the *PHO2* transcript level in roots may be responsible for the lower degradation of Pi transporters. Interestingly, we observed that *PHT1;4* gene expression increased during heat stress, which could compensate for the decrease of *PHT1;1* expression.

After one hour of heat stress, all analyzed Pi-related genes in the shoots have stable expression compared to the roots, with only one exception: *PHO2* expression was downregulated significantly after one hour of heat treatment. Previously, we observed that the silencing of the *PHO2* gene resulted in an increased Pi concentration (Pacak et al., 2010). Interestingly, *PHR1* and *PHR2* TFs expression was not changed in either barley roots or shoots. Since *PHR1* expression is stable, other TFs can be responsible for either the downregulation or upregulation of Pi-related genes during heat stress. In roots *PHR2* expression is downregulated in the further time-points.

In further experiments, we analyzed plants grown in soil with a different Pi supply. *HvIPS1*, *HvPHT1;1*, *HvPHT1;4*, *HvPHT1;6*, and *MIR399c* showed a clear response to Pi starvation. After Pi replenishment, we observed a reduction of *HvPHT1;1*, *HvPHT1;4*, *HvPHT1;6*, *HvIPS1*, and *pri-miR399c* expression levels. In contrast to the heat stress Pi re-supply treatment did not downregulate *PHO1* gene expression (with one exception 12 h time-point, barley cv. Rolap). We conclude that barley plants utilized two strategies to regulate

TABLE 4 | Motifs present in the barley *PHO2* promoter.

motif	recognized by	position within promoter
CArG	MADS-box TF	–1299, –1290
CGT[G/A]	NAC TF core binding signals	five motifs within 1422 nt promoter sequence
RYCGAC	CBF (C-repeat (CRT) binding factors)	–913; –908
GCCGAC, DRE/CRT core, dehydration-responsive element/C-repeat	DREB1A	–913; –908



FIGURE 11 | Twenty-three-day-old barley cv. Black Hulless plants grown under different Pi regime in soil with low Pi concentration, after Pi re-supply and under control conditions.

Pi concentration. Upon heat stress both *PHT1;1* and *PHO1* genes are downregulated and Pi concentration is stable. Pi re-supply treatment downregulated *HvPHT1;1* expression but not *PHO1*. Its expression is even higher at + 1 h time-point (Figure 9E). This allows for Pi concentration increments but prevent Pi over-accumulation. In Black Hulless 10- and 15-day-old plants, we observed higher *HvPHO2* expression in plants grown in a high Pi supply (compared to low Pi conditions). The data showed that *HvPHO2* expression was influenced by the Pi content in soil and correlated with an increase in *pri-miR399c* expression. *PHO2* expression was especially affected by the concentration of Pi in the first two weeks of plant growth. *MIR399* and *miR827* are the only microRNAs that bind to the 5' UTR of mRNAs in *Arabidopsis* (Ding et al., 2012). Their levels increased highly during Pi starvation and also decreased after Pi supply. The early senescence of leaf no. 1 of barley plants grown in low Pi

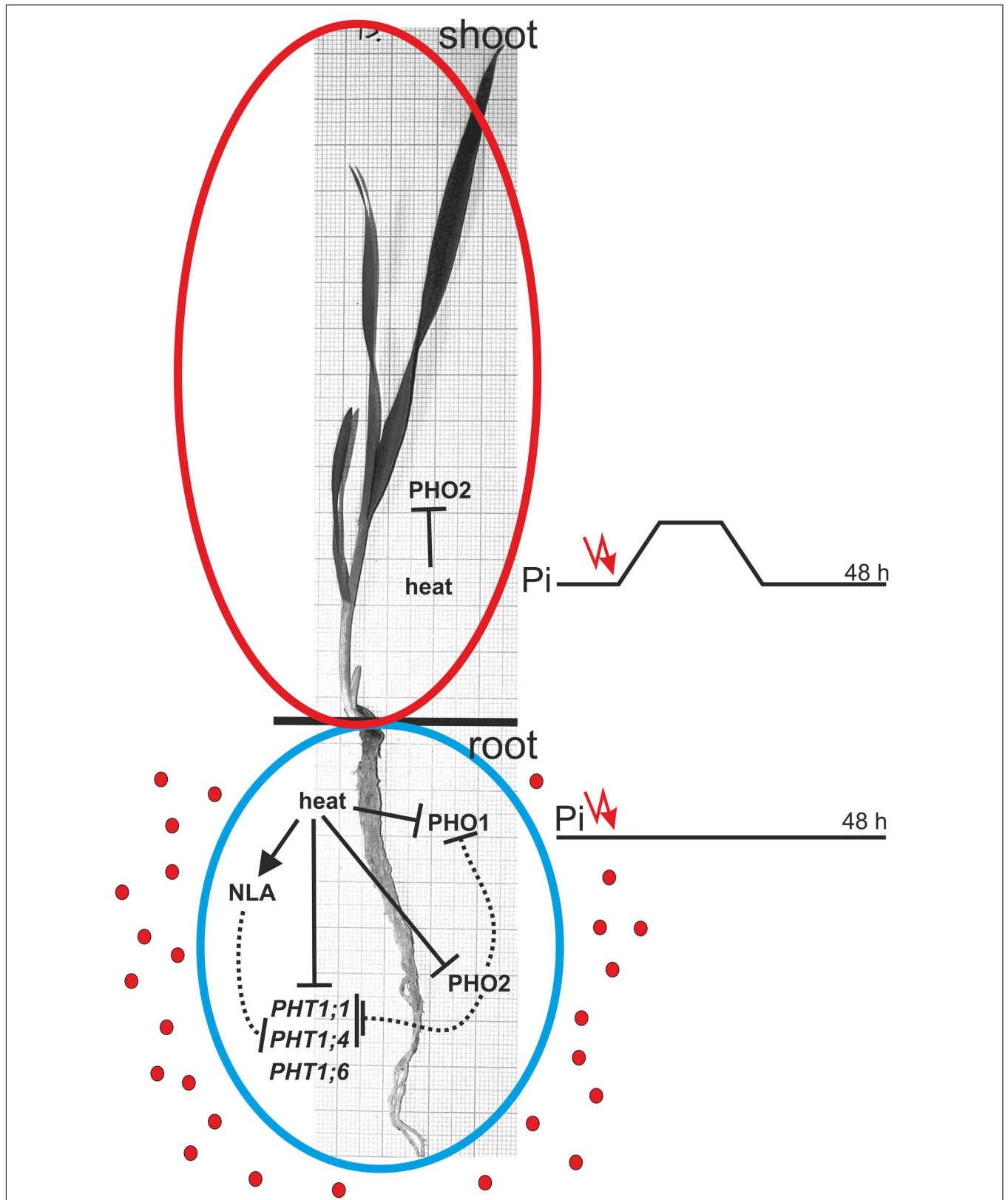


FIGURE 12 | Model of heat stress impact on Pi-related genes expression and their Pi-homeostasis-related activity. The solid and dotted lines represent regulation on the transcriptional and protein levels, respectively. Red dots represent Pi ions.

suggests the remobilization of Pi from this leaf to the other plant parts.

It was previously shown that, at an ambient temperature (23°C), miR399a, b, and d are more abundant by 1.30–1.31-fold than at 16°C (Lee et al., 2010). During heat stress at a higher temperature (35.5°C), we observed the expression of *PHO2* to be downregulated in both roots and shoots. Our Northern analysis of the shoot samples did not show any miR399 signals. The low abundance of miR399 and miR827 in Pi-sufficient conditions and after heat treatment was not surprising. The abundance of these microRNAs is elevated during Pi starvation, and other stresses (like drought) in *Brachypodium distachyon* are not sufficient to induce their expression (Bertolini et al., 2013). We concluded that, apart from the post-transcriptional action of miR399 on *PHO2* expression, downregulation may be caused on the transcriptional level. We performed *PHO2*-promoter analysis and found binding sites for several TFs. Some of them are presented in **Table 4**.

Our data suggests that heat stress affects the expression of barley Pi-related genes with an impact on plant Pi concentration during the first period of stress. Surprisingly, remarkable changes in the gene expression after 24 and 48 h of heat stress did not result in changed Pi concentrations in the barley plants. The model of gene action during heat stress is presented in **Figure 12**. Generally, we observed two strategies applied by barley plants to cope with heat stress and Pi-supply treatment. During heat stress, the expression of *PHT1* transporters (especially *PHT1;1*) significantly decreased, with a simultaneous reduction of *PHO1* expression, thus blocking Pi efflux from roots to shoots. This stabilizes the Pi concentration in barley roots. During the Pi re-supply treatment, *PHT1;1* expression is also reduced (but not *PHO1*). This reduction is in response to Pi accessibility, but it did not hamper the increase of Pi concentration in the root. One could expect that the increased Pi concentration in roots should be accompanied by the incremental expression of *PHO1*. Later, after three days of Pi re-supplementation, the expression of the *PHO1* gene remains stable.

Further studies on barley Pi-homeostasis maintenance during heat stress are necessary, mainly at the protein and RNA levels. For example, it was recently shown that *cis*-NAT_{PHO1;2} long non-coding RNA promotes *PHO1;2* translation (Secco et al., 2010;

Jabnounne et al., 2013). Previously it was reported that *NLA* gene involved in adaptive responses to low nitrogen conditions in *Arabidopsis* is regulated by Pi-starvation induced miR827 (Kant et al., 2011). There are more connections between nitrogen and phosphate metabolism pathways. *Arabidopsis* mutants *phf1* and *pht1;1* were identified as suppressors of the *nla* mutant. These suppressors restore the *nla* mutant phenotype to WT (Kant et al., 2011). Thus the observed decreased level of the *PHT1;1* expression during heat stress could be connected to the *NLA* gene expression up-regulation.

Studies presented in this work shed a new light on the mechanisms of Pi-homeostasis regulation and can help to improve crop plants in their response to unfavorable changes in the environment.

AUTHOR CONTRIBUTIONS

AP designed, performed, analyzed all experiments, prepared manuscript, tables, and figures, wrote manuscript, MB-P performed Pi concentration analysis and analyzed experiments, AS-B designed, performed heat stress experiment, KK designed, performed heat stress experiment, PS performed Pi concentration analysis, KM analyzed transcriptome data, IJ designed Pi re-supply experiment and assisted in manuscript preparation, AJ assisted in manuscript writing, editing, ZS-K designed heat experiment, wrote manuscript.

ACKNOWLEDGMENTS

This work was supported by: Polish National Science Centre (Narodowe Centrum Nauki) [DEC-2013/11/B/NZ9/01761 to AP, PS, KK]; KNOW RNA Research Centre in Poznan [01/KNOW2/2014 to MB-P, AJ, ZS-K].

SUPPLEMENTARY MATERIAL

The Supplementary Material for this article can be found online at: <http://journal.frontiersin.org/article/10.3389/fpls.2016.00926>

REFERENCES

- Abou-Elwafa, S. F., and Amein, K. A. (2016). Genetic diversity and potential high temperature tolerance in barley (*Hordeum vulgare*). *World J. Agric. Res.* 4, 1–8.
- Anders, S., and Huber, W. (2010). Differential expression analysis for sequence count data. *Genome Biol.* 11:R106. doi: 10.1186/gb-2010-11-10-r106
- Anders, S., Pyl, P. T., and Huber, W. (2015). HTSeq—A Python framework to work with high-throughput sequencing data. *Bioinformatics* 31, 166–169. doi: 10.1093/bioinformatics/btu638
- Baker, A., Ceasar, S. A., Palmer, A. J., Paterson, J. B., Qi, W., Muench, S. P., et al. (2015). Replace, reuse, recycle: improving the sustainable use of phosphorus by plants. *J. Exp. Bot.* 66, 3523–3540. doi: 10.1093/jxb/erv210
- Banerjee, A., and Roychoudhury, A. (2015). WRKY proteins: signaling and regulation of expression during abiotic stress responses. *ScientificWorldJournal* 2015:807560. doi: 10.1155/2015/807560
- Bari, R., Datt Pant, B., Stitt, M., and Scheible, W. R. (2006). *PHO2*, microRNA399, and *PHR1* define a phosphate-signaling pathway in plants. *Plant Physiol.* 141, 988–999. doi: 10.1104/pp.106.079707
- Bertolini, E., Verelst, W., Horner, D. S., Gianfranceschi, L., Piccolo, V., Inze, D., et al. (2013). Addressing the role of microRNAs in reprogramming leaf growth during drought stress in *Brachypodium distachyon*. *Mol. Plant* 6, 423–443. doi: 10.1093/mp/sss160
- Bologna, N. G., Mateos, J. L., Bresso, E. G., and Palatnik, J. F. (2009). A loop-to-base processing mechanism underlies the biogenesis of plant microRNAs miR319 and miR159. *EMBO J.* 28, 3646–3656. doi: 10.1038/emboj.2009.292
- Bustos, R., Castrillo, G., Linhares, F., Puga, M. I., Rubio, V., Perez-Perez, J., et al. (2010). A central regulatory system largely controls transcriptional activation and repression responses to phosphate starvation in *Arabidopsis*. *PLoS Genet.* 6:e1001102. doi: 10.1371/journal.pgen.1001102
- Christophersen, H. M., Smith, F. A., and Smith, S. E. (2009). Arbuscular mycorrhizal colonization reduces arsenate uptake in barley via downregulation

- of transporters in the direct epidermal phosphate uptake pathway. *New Phytol.* 184, 962–974. doi: 10.1111/j.1469-8137.2009.03009.x
- Cordell, D., and White, S. (2014). Life's bottleneck: sustaining the world's phosphorus for a food secure future. *Annu. Rev. Environ. Resour.* 39, 161–188. doi: 10.1146/annurev-environ-010213-113300
- Ding, J., Li, D., Ohler, U., Guan, J., and Zhou, S. (2012). Genome-wide search for miRNA-target interactions in *Arabidopsis thaliana* with an integrated approach. *BMC Genomics* 13(Suppl. 3):S3. doi: 10.1186/1471-2164-13-S3-S3
- Franco-Zorrilla, J. M., Valli, A., Todesco, M., Mateos, I., Puga, M. I., Rubio-Somoza, I., et al. (2007). Target mimicry provides a new mechanism for regulation of microRNA activity. *Nat. Genet.* 39, 1033–1037. doi: 10.1038/ng2079
- Guo, B., Jin, Y., Wussler, C., Blancaflor, E. B., Motes, C. M., and Versaw, W. K. (2008). Functional analysis of the *Arabidopsis* PHT4 family of intracellular phosphate transporters. *New Phytol.* 177, 889–898. doi: 10.1111/j.1469-8137.2007.02331.x
- Hackenberg, M., Shi, B.-J., Gustafson, P., and Langridge, P. (2013). Characterization of phosphorus-regulated miR399 and miR827 and their isomirs in barley under phosphorus-sufficient and phosphorus-deficient conditions. *BMC Plant Biol.* 13:214. doi: 10.1186/1471-2229-13-214
- Hamburger, D., Rezzonico, E., MacDonald-Comber Petetot, J., Somerville, C., and Poirier, Y. (2002). Identification and characterization of the *Arabidopsis* PHO1 gene involved in phosphate loading to the xylem. *Plant Cell* 14, 889–902. doi: 10.1105/tpc.000745
- Higo, K., Ugawa, Y., Iwamoto, M., and Korenaga, T. (1999). Plant cis-acting regulatory DNA elements (PLACE) database: 1999. *Nucleic Acids Res.* 27, 297–300. doi: 10.1093/nar/27.1.297
- Hu, B., Zhu, C., Li, F., Tang, J., Wang, Y., Lin, A., et al. (2011). LEAF TIP NECROSIS1 plays a pivotal role in the regulation of multiple phosphate starvation responses in rice. *Plant Physiol.* 156, 1101–1115. doi: 10.1104/pp.110.170209
- Huang, C. Y., Roessner, U., Eickmeier, I., Genc, Y., Callahan, D. L., Shirley, N., et al. (2008). Metabolite profiling reveals distinct changes in carbon and nitrogen metabolism in phosphate-deficient barley plants (*Hordeum vulgare* L.). *Plant Cell Physiol.* 49, 691–703. doi: 10.1093/pcp/pcn044
- Huang, C. Y., Shirley, N., Genc, Y., Shi, B., and Langridge, P. (2011). Phosphate utilization efficiency correlates with expression of low-affinity phosphate transporters and noncoding RNA, IPS1, in barley. *Plant Physiol.* 156, 1217–1229. doi: 10.1104/pp.111.178459
- Huang, T. K., Han, C. L., Lin, S. I., Chen, Y. J., Tsai, Y. C., Chen, Y. R., et al. (2013). Identification of downstream components of ubiquitin-conjugating enzyme PHOSPHATE2 by quantitative membrane proteomics in *Arabidopsis* roots. *Plant Cell* 25, 4044–4060. doi: 10.1105/tpc.113.115998
- Jabnounge, M., Secco, D., Lecampion, C., Robaglia, C., Shu, Q., and Poirier, Y. (2013). A rice cis-natural antisense RNA acts as a translational enhancer for its cognate mRNA and contributes to phosphate homeostasis and plant fitness. *Plant Cell* 25, 4166–4182. doi: 10.1105/tpc.113.116251
- Kant, S., Peng, M., and Rothstein, S. J. (2011). Genetic regulation by NLA and microRNA827 for maintaining nitrate-dependent phosphate homeostasis in *Arabidopsis*. *PLoS Genet.* 7:e1002021. doi: 10.1371/journal.pgen.1002021
- Karandashov, V., and Bucher, M. (2005). Symbiotic phosphate transport in arbuscular mycorrhizas. *Trends Plant Sci.* 10, 22–29. doi: 10.1016/j.tplants.2004.12.003
- Kim, D., Pertea, G., Trapnell, C., Pimentel, H., Kelley, R., and Salzberg, S. L. (2013). TopHat2: accurate alignment of transcriptomes in the presence of insertions, deletions and gene fusions. *Genome Biol.* 14:R36. doi: 10.1186/gb-2013-14-4-r36
- Kruszka, K., Pacak, A., Swida-Barteczka, A., Nuc, P., Alaba, S., Wroblewska, Z., et al. (2014). Transcriptionally and post-transcriptionally regulated microRNAs in heat stress response in barley. *J. Exp. Bot.* 65, 6123–6135. doi: 10.1093/jxb/eru353
- Kruszka, K., Pacak, A., Swida-Barteczka, A., Stefaniak, A. K., Kaja, E., Sierocka, I., et al. (2013). Developmentally regulated expression and complex processing of barley pri-microRNAs. *BMC Genomics* 14:34. doi: 10.1186/1471-2164-14-34
- Lanzetta, P. A., Alvarez, L. J., Reinach, P. S., and Candia, O. A. (1979). An improved assay for nanomole amounts of inorganic phosphate. *Anal. Biochem.* 100, 95–97. doi: 10.1016/0003-2697(79)90115-5
- Lee, H., Yoo, S. J., Lee, J. H., Kim, W., Yoo, S. K., Fitzgerald, H., et al. (2010). Genetic framework for flowering-time regulation by ambient temperature-responsive miRNAs in *Arabidopsis*. *Nucleic Acids Res.* 38, 3081–3093. doi: 10.1093/nar/gkp1240
- Li, Y. F., Wang, Y., Tang, Y., Kakani, V. G., and Mahalingam, R. (2013). Transcriptome analysis of heat stress response in switchgrass (*Panicum virgatum* L.). *BMC Plant Biol.* 13:153. doi: 10.1186/1471-2229-13-153
- Liu, T. Y., Huang, T. K., Tseng, C. Y., Lai, Y. S., Lin, S. I., Lin, W. Y., et al. (2012). PHO2-dependent degradation of PHO1 modulates phosphate homeostasis in *Arabidopsis*. *Plant Cell* 24, 2168–2183. doi: 10.1105/tpc.112.096636
- Liu, T. Y., Lin, W. Y., Huang, T. K., and Chiou, T. J. (2014). MicroRNA-mediated surveillance of phosphate transporters on the move. *Trends Plant Sci.* 19, 647–655. doi: 10.1016/j.tplants.2014.06.004
- Miura, K., Rus, A., Sharkhuu, A., Yokoi, S., Karthikeyan, A. S., Raghothama, K. G., et al. (2005). The *Arabidopsis* SUMO E3 ligase SIZ1 controls phosphate deficiency responses. *Proc. Natl. Acad. Sci. U.S.A.* 102, 7760–7765. doi: 10.1073/pnas.0500778102
- Müller, R., Nilsson, L., Krintel, C., and Hamborg Nielsen, T. (2004). Gene expression during recovery from phosphate starvation in roots and shoots of *Arabidopsis thaliana*. *Physiol. Plant.* 122, 233–243. doi: 10.1111/j.1399-3054.2004.00394.x
- Nilsson, L., Müller, R., and Nielsen, T. H. (2007). Increased expression of the MYB-related transcription factor, PHR1, leads to enhanced phosphate uptake in *Arabidopsis thaliana*. *Plant Cell Environ.* 30, 1499–1512. doi: 10.1111/j.1365-3040.2007.01734.x
- Olsen, S. R., Cole, C. V., Watanabe, F. S., and Dean, L. A. (1954). *Estimation of Available Phosphorus in Soils by Extraction with Sodium Bicarbonate*. Washington, DC: USDA, Circular No. 939.
- Pacak, A., Geisler, K., Jørgensen, B., Barciszewska-Pacak, M., Nilsson, L., Nielsen, T. H., et al. (2010). Investigations of barley stripe mosaic virus as a gene silencing vector in barley roots and in *Brachypodium distachyon* and oat. *Plant Methods* 6:26. doi: 10.1186/1746-4811-6-26
- Pall, G. S., and Hamilton, A. J. (2008). Improved northern blot method for enhanced detection of small RNA. *Nat. Protoc.* 3, 1077–1084. doi: 10.1038/nprot.2008.67
- Park, B. S., Seo, J. S., and Chua, N. H. (2014). NITROGEN LIMITATION ADAPTATION recruits PHOSPHATE2 to target the phosphate transporter PT2 for degradation during the regulation of *Arabidopsis* phosphate homeostasis. *Plant Cell* 26, 454–464. doi: 10.1105/tpc.113.120311
- Pinheiro, J., Bates, D., DebRoy, S., and Sarkar, D., R Core Team (2014). *nlme: Linear and Nonlinear Mixed Effects Models. R Package Version 3.1–117*. Available at: <http://cran.r-project.org/web/packages/nlme/index.html>
- Poirier, Y., and Bucher, M. (2002). Phosphate transport and homeostasis in *Arabidopsis*. *Arabidopsis Book* 1:e0024. doi: 10.1199/tab.0024
- Preuss, C. P., Huang, C. Y., Gilliam, M., and Tyerman, S. D. (2010). Channel-like characteristics of the low-affinity barley phosphate transporter PHT1;6 when expressed in *Xenopus oocytes*. *Plant Physiol.* 152, 1431–1441. doi: 10.1104/pp.109.152009
- Qin, D., Wu, H., Peng, H., Yao, Y., Ni, Z., Li, Z., et al. (2008). Heat stress-responsive transcriptome analysis in heat susceptible and tolerant wheat (*Triticum aestivum* L.) by using Wheat Genome Array. *BMC Genomics* 9:432. doi: 10.1186/1471-2164-9-432
- Ramakers, C., Ruijter, J. M., Deprez, R. H., and Moorman, A. F. (2003). Assumption-free analysis of quantitative real-time polymerase chain reaction (PCR) data. *Neurosci. Lett.* 339, 62–66. doi: 10.1016/S0304-3940(02)01423-4
- Schunmann, P. H., Richardson, A. E., Smith, F. W., and Delhaize, E. (2004a). Characterization of promoter expression patterns derived from the Pht1 phosphate transporter genes of barley (*Hordeum vulgare* L.). *J. Exp. Bot.* 55, 855–865. doi: 10.1093/jxb/erh103
- Schunmann, P. H., Richardson, A. E., Vickers, C. E., and Delhaize, E. (2004b). Promoter analysis of the barley Pht1;1 phosphate transporter gene identifies regions controlling root expression and responsiveness to phosphate deprivation. *Plant Physiol.* 136, 4205–4214. doi: 10.1104/pp.104.045823
- Secco, D., Baumann, A., and Poirier, Y. (2010). Characterization of the rice PHO1 gene family reveals a key role for OsPHO1;2 in phosphate homeostasis and the evolution of a distinct clade in dicotyledons. *Plant Physiol.* 152, 1693–1704. doi: 10.1104/pp.109.149872

- Shin, H., Shin, H. S., Dewbre, G. R., and Harrison, M. J. (2004). Phosphate transport in *Arabidopsis*: Pht1;1 and Pht1;4 play a major role in phosphate acquisition from both low- and high-phosphate environments. *Plant J.* 39, 629–642. doi: 10.1111/j.1365-313X.2004.02161.x
- Smalle, J., and Vierstra, R. D. (2004). The ubiquitin 26S proteasome proteolytic pathway. *Annu. Rev. Plant Biol.* 55, 555–590. doi: 10.1146/annurev.arplant.55.031903.141801
- Sobkowiak, L., Bielewicz, D., Malecka, E. M., Jakobsen, I., Albrechtsen, M., Szweykowska-Kulinska, Z., et al. (2012). The role of the P1BS element containing promoter-driven genes in Pi transport and homeostasis in plants. *Front. Plant Sci.* 3:58. doi: 10.3389/fpls.2012.00058
- Stefanovic, A., Arpat, A. B., Bligny, R., Gout, E., Vidoudez, C., Bensimon, M., et al. (2011). Over-expression of PHO1 in *Arabidopsis* leaves reveals its role in mediating phosphate efflux. *Plant J.* 66, 689–699. doi: 10.1111/j.1365-313X.2011.04532.x
- Szarzynska, B., Sobkowiak, L., Pant, B. D., Balazadeh, S., Scheible, W. R., Mueller-Roeber, B., et al. (2009). Gene structures and processing of *Arabidopsis thaliana* HYL1-dependent pri-miRNAs. *Nucleic Acids Res.* 37, 3083–3093. doi: 10.1093/nar/gkp189
- TEAM, R. C. (2010). *R: A Language and Environment for Statistical Computing*. Vienna: R Foundation for Statistical Computing.
- Tolia, N. H., and Joshua-Tor, L. (2006). Strategies for protein coexpression in *Escherichia coli*. *Nat. Methods* 3, 55–64. doi: 10.1038/nmeth0106-55
- Wang, C., Huang, W., Ying, Y., Li, S., Secco, D., Tyerman, S., et al. (2012). Functional characterization of the rice SPX-MFS family reveals a key role of OsSPX-MFS1 in controlling phosphate homeostasis in leaves. *New Phytol.* 196, 139–148. doi: 10.1111/j.1469-8137.2012.04227.x
- Wang, H., Sun, R., Cao, Y., Pei, W., Sun, Y., Zhou, H., et al. (2015). OsSIZ1, a SUMO E3 ligase gene, is involved in the regulation of the responses to phosphate and nitrogen in rice. *Plant Cell Physiol.* 56, 2381–2395. doi: 10.1093/pcp/pcv162
- Wang, Z., Ruan, W., Shi, J., Zhang, L., Xiang, D., Yang, C., et al. (2014). Rice SPX1 and SPX2 inhibit phosphate starvation responses through interacting with PHR2 in a phosphate-dependent manner. *Proc. Natl. Acad. Sci. U.S.A.* 111, 14953–14958. doi: 10.1073/pnas.1404680111
- Wege, S., Khan, G. A., Jung, J. Y., Vogiatzaki, E., Pradervand, S., Aller, I., et al. (2016). The EXS domain of PHO1 participates in the response of shoots to phosphate deficiency via a root-to-shoot signal. *Plant Physiol.* 170, 385–400. doi: 10.1104/pp.15.00975
- Zhang, X., Li, J., Liu, A., Zou, J., Zhou, X., Xiang, J., et al. (2012). Expression profile in rice panicle: insights into heat response mechanism at reproductive stage. *PLoS ONE* 7:e49652. doi: 10.1371/journal.pone.0049652
- Zinn, K. E., Tunc-Ozdemir, M., and Harper, J. F. (2010). Temperature stress and plant sexual reproduction: uncovering the weakest links. *J. Exp. Bot.* 61, 1959–1968. doi: 10.1093/jxb/erq053

Conflict of Interest Statement: The authors declare that the research was conducted in the absence of any commercial or financial relationships that could be construed as a potential conflict of interest.

Copyright © 2016 Pacak, Barciszewska-Pacak, Swida-Barteczka, Kruszka, Segal, Milanowska, Jakobsen, Jarmolowski and Szweykowska-Kulinska. This is an open-access article distributed under the terms of the Creative Commons Attribution License (CC BY). The use, distribution or reproduction in other forums is permitted, provided the original author(s) or licensor are credited and that the original publication in this journal is cited, in accordance with accepted academic practice. No use, distribution or reproduction is permitted which does not comply with these terms.