



Exome sequencing and functional analysis identifies a novel mutation in *EXT1* gene that causes multiple osteochondromas

Zhang, Feng; Liang, Jinlong; Guo, Xiong; Zhang, Yingang; Wen, Yan; Li, Qiang; Zhang, Zengtie; Ma, Weijuan; Dai, Lanlan; Liu, Xuanzhu; Yang, Ling; Wang, Jun

Published in:
P L o S One

DOI:
[10.1371/journal.pone.0072316](https://doi.org/10.1371/journal.pone.0072316)

Publication date:
2013

Document version
Publisher's PDF, also known as Version of record

Citation for published version (APA):
Zhang, F., Liang, J., Guo, X., Zhang, Y., Wen, Y., Li, Q., ... Wang, J. (2013). Exome sequencing and functional analysis identifies a novel mutation in *EXT1* gene that causes multiple osteochondromas. *P L o S One*, 8(8), [e72316]. <https://doi.org/10.1371/journal.pone.0072316>

Exome Sequencing and Functional Analysis Identifies a Novel Mutation in *EXT1* Gene That Causes Multiple Osteochondromas

Feng Zhang^{1,9}, Jinlong Liang^{2,9}, Xiong Guo^{1*}, Yingang Zhang³, Yan Wen¹, Qiang Li⁴, Zengtie Zhang¹, Weijuan Ma¹, Lanlan Dai², Xuanzhu Liu², Ling Yang⁵, Jun Wang^{2,6,7*}

1 Key Laboratory of Environment and Gene Related Diseases of Ministry Education, Faculty of Public Health, College of Medicine, Xi'an Jiaotong University, Xi'an, Shaanxi, China, **2** BGI-Shenzhen, Shenzhen, China, **3** Department of Orthopedics, First Affiliated Hospital of Medical College of Xi'an Jiaotong University, Xi'an, Shaanxi, China, **4** Department of Orthopedics, First People's Hospital of Longxi County, Gansu, China, **5** BGI-Tianjin, Tianjin, China, **6** Department of Biology, University of Copenhagen, Copenhagen, Denmark, **7** King Abdulaziz University, Jeddah, Saudi Arabia

Abstract

Multiple osteochondromas (MO) is an inherited skeletal disorder, and the molecular mechanism of MO remains elusive. Exome sequencing has high chromosomal coverage and accuracy, and has recently been successfully used to identify pathogenic gene mutations. In this study, exome sequencing followed by Sanger sequencing validation was first used to screen gene mutations in two representative MO patients from a Chinese family. After filtering the data from the 1000 Genome Project and the dbSNP database (build 132), the detected candidate gene mutations were further validated via Sanger sequencing of four other members of the same MO family and 200 unrelated healthy subjects. Immunohistochemistry and multiple sequence alignment were performed to evaluate the importance of the identified causal mutation. A novel frameshift mutation, c.1457insG at codon 486 of exon 6 of *EXT1* gene, was identified, which truncated the glycosyltransferase domain of *EXT1* gene. Multiple sequence alignment showed that codon 486 of *EXT1* gene was highly conserved across various vertebrates. Immunohistochemistry demonstrated that the chondrocytes with functional *EXT1* in MO were less than those in extragenetic solitary chondromas. The novel c.1457insG deleterious mutation of *EXT1* gene reported in this study expands the causal mutation spectrum of MO, and may be helpful for prenatal genetic screening and early diagnosis of MO.

Citation: Zhang F, Liang J, Guo X, Zhang Y, Wen Y, et al. (2013) Exome Sequencing and Functional Analysis Identifies a Novel Mutation in *EXT1* Gene That Causes Multiple Osteochondromas. PLoS ONE 8(8): e72316. doi:10.1371/journal.pone.0072316

Editor: Ralf Krahe, University of Texas MD Anderson Cancer Center, United States of America

Received: February 27, 2013; **Accepted:** July 10, 2013; **Published:** August 29, 2013

Copyright: © 2013 Zhang et al. This is an open-access article distributed under the terms of the Creative Commons Attribution License, which permits unrestricted use, distribution, and reproduction in any medium, provided the original author and source are credited.

Funding: The study was supported by The National Natural Scientific Fund of China (30972556,81102086) and Specialized Research Fund for the Doctoral Program of Higher Education (2012T50743). The funders had no role in study design, data collection and analysis, decision to publish, or preparation of the manuscript.

Competing Interests: The authors have declared that no competing interests exist.

* E-mail: guox@mail.xjtu.edu.cn (XG); wangjun30@gmail.com (JW)

⁹ These authors contributed equally to this work.

Introduction

Multiple osteochondromas (MO, OMIM 133700) is an autosomal dominant inherited disease, and is characterized by multiple cartilage-capped benign tumors, short stature and other skeletal disorders that are caused by mechanical compression of adjacent vessels and nerves [1]. MO usually occurs during childhood and gradually increases in sizes and numbers until the end of puberty. The estimated prevalence of MO ranges from 1/100 in a small Guam population to 1/50,000 in Western populations [2,3]. Some cases of MO will transform into malignant osteosarcoma or chondrosarcoma [3,4].

Because the molecular mechanism of MO remains elusive, the only effective treatment is surgical resection of continuously emerging chondromas. Identifying causal gene mutations will advance prenatal genetic screening as well as early diagnosis and treatment of MO [5]. MO is genetically heterogeneous and two causal genes have already been identified in previous studies, including *EXT1* located on chromosome 8q24.1 [6,7] and *EXT2*

located on chromosome 11p11 [8,9]. *EXT1* and *EXT2* belong to the putative tumor-suppressor *EXT* gene family, which also contains three homologous *EXT*-like genes, including *EXTL1*, *EXTL2* and *EXTL3*. It has been suggested that MO is caused in large part by *EXT1* mutations [10,11,12]. The MO caused by *EXT1* gene mutations presents a greater risk for malignant transformation than the MO caused by *EXT2* gene mutations [13,14]. No linkage evidence has been reported for *EXT*-like genes.

With the rapid development of DNA sequencing technology, whole exome sequencing is available now. Recent studies have demonstrated the power of exome sequencing for gene mapping of diseases [15,16,17,18]. Exome sequencing should be unbiased and can help to identify novel causal genetic variants, since it does not focus on specific chromosomal regions or genes reported by previous linkage and association studies.

In this study, exome sequencing followed by Sanger sequencing validation, was first used to screen gene mutations in two representative MO patients from a Chinese family. After filtering

the data from the 1000 Genome Project and the dbSNP database (build 132), the detected candidate gene mutations were further validated by Sanger sequencing of four other members of the same family and 200 unrelated healthy subjects. Immunohistochemistry and multiple sequence alignment were also conducted to evaluate the importance of the identified causal gene mutation.

Results

The chondroma sections, stained by HE, SO and TB, are presented in Fig. 1d–f. The representative tissue structure of MO was observed with a cartilage cap, covered by fibrous perichondrium, and merged into underlying spongy bone.

On average, exome sequencing generated 7.49 Gb sequence data per sample as 90-bp paired-end reads. After quality control, 92.6% of sequence data was aligned to the UCSC human reference genome (version hg19, build 37.1) and 64.9% of sequence data was mapped to target regions. We achieved an average coverage of 88X and 96% of targeted regions were read more than 10 times, which ensured to detect genetic variants with high sensitivity and specificity. On average, exome sequencing initially identified 104,573 SNPs and 7,335 indels per subject. After removing the common SNPs reported in the dbSNP (build 132) and the 1000 Genome project data, 2,320 SNPs were

retained. These variants were further filtered using following criteria: 1) the variants were nonsynonymous and deleterious (as predicted by SIFT software); 2) the variants were shared by all affected family members that underwent exome sequencing. A total of 73 SNPs and 18 indels were retained as candidate causal mutations and were further analyzed.

The 73 SNPs and 18 indels identified by exome sequencing were further validated by Sanger sequencing of 6 MO family members (including the two MO patients that underwent exome sequencing) and 200 healthy subjects. Only the *EXT1* gene mutation, c.1457insG, was detected in all 3 affected family members, but not in the 3 unaffected family members (Fig. 2a) and the 200 healthy subjects. *EXT1* consists of 11 exons, encoding 746 amino acids (Fig. 2b). The mutation, c.1457insG, occurred at codon 486 of exon 6, causing a frameshift mutation in the glycosyltransferase domain of *EXT1* gene and creating a premature stop codon at amino acid position 520 (Fig. 2c). Codon 486 of *EXT1* gene is highly conserved across various vertebrate species (Fig. 2d), indicating its functional importance.

To assess the functional impact of c.1457insG on *EXT1* protein, immunohistochemistry was used to compare *EXT1* protein level between a patient with MO and a patient with extragenetic solitary chondromas. In extragenetic solitary chondromas, *EXT1* protein was enriched in the cytoplasm of chondrocytes (Fig. 3b). Comparing with extragenetic solitary chondroma, the chondrocytes with functional *EXT1* in MO were less than those in extragenetic solitary chondroma (Fig. 3a).

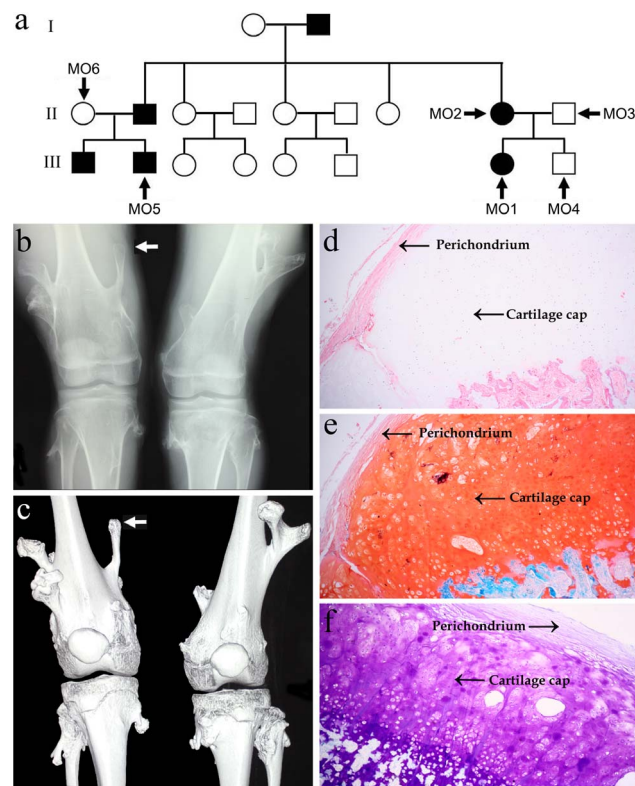


Figure 1. Pedigree structure and characteristic of the MO proband. (a) Pedigree structure of the MO family; (b,c) computed radiography and 3D reconstruction images of knees of the MO proband. The proband exhibits multiple exostoses, arising from the lateral ends of femurs, tibiae and fibulae. Arrowhead denotes the chondroma used for histochemistry staining; (d–f) low-power micrograph (4×) of the proband's chondroma sections stained by hematoxylin-eosin (d), Safranin O (e) and Toluidine Blue (f). The cartilage cap of MO is covered by fibrous perichondrium and merges into the underlying spongy bone.
doi:10.1371/journal.pone.0072316.g001

Discussion

We identified a novel frameshift mutation, c.1457insG in exon 6 of *EXT1* gene in this study. The c.1457insG mutation was shared by 3 affected family members, but not by 3 unaffected family members and 200 unrelated healthy subjects. The results of immunohistochemistry and multiple sequence alignment supported the deleterious impact of the c.1457insG mutation on *EXT1* gene. According to the Multiple Osteochondromas Mutation Database (<http://medgen.ua.ac.be/LOVDv.2.0/home.php>), more than 400 *EXT1* gene mutations have been reported by previous studies. Our results demonstrate the causal role of the c.1457insG mutation and expand the causal mutation spectrum of MO.

The molecular mechanism of MO remains elusive. *EXT1* gene encodes endoplasmic reticulum-resident type II transmembrane glycosyltransferase, which can catalyze the polymerization of heparan sulfate chains at endoplasmic reticulum and Golgi apparatus [19,20]. Heparan sulfate is an essential regulator of signal transduction during chondrocyte differentiation, ossification and apoptosis [21,22], such as the diffusion of the Hedgehog protein, and ligand-receptor binding of fibroblast growth factor and bone matrix protein during endochondral ossification [23,24,25]. Previous studies suggested that dysfunction of heparan sulfate synthesis would disrupt the Hedgehog, Wntless and Decapentaplegic signaling pathways, and accelerate chondrocyte differentiation [25,26,27].

The c.1457insG mutation occurred at the glycosyltransferase domain of *EXT1* gene, which played an important role in the biosynthesis of heparan sulfate [22,28]. The c.1457insG mutation caused a frameshift at codon 486 and created a premature stop codon at codon 520, which truncated the glycosyltransferase domain of *EXT1* gene. This hypothesis was supported by immunohistochemistry experiment, which observed that the chondrocytes with functional *EXT1* in MO were less than those in extragenetic solitary chondroma. This result is consistent with that of a previous study, in which reduced *EXT1* protein was

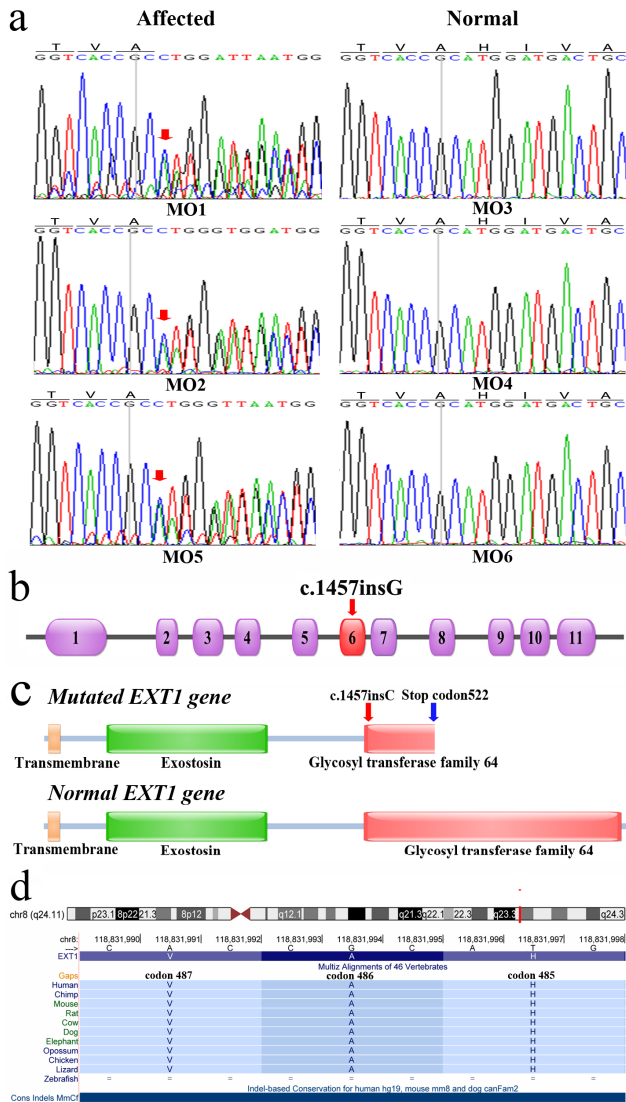


Figure 2. Identification of a frameshift mutation in codon 486 of *EXT1* gene. (a) Sanger sequencing detected the inserted base in the *EXT1* gene of all affected subjects. Red arrowhead denotes the mutation position; (b) intron-exon structure of *EXT1* gene. Mutated exon is indicated by red arrowhead; (c) comparison of the functional domains of *EXT1* proteins encoded by mutated and normal *EXT1* genes; (d) multiple sequence alignment of codon 485 to codon 487. Codon 486 is highly conserved across various vertebrates. doi:10.1371/journal.pone.0072316.g002

observed in MO-derived chondrocytes [29]. One explanation for the reduced *EXT1* protein could be nonsense-mediated decay. Even if mutated *EXT1* gene was translated, the products may be unable to correctly fold and would rapidly degrade [29,30]. Further studies are necessary to clarify whether the c.1457insG mutation leads to nonsense-mediated decay or unstable *EXT1* protein.

Based on the results of previous and our studies, we may infer that the MO caused by the c.1457insG mutation was attributed to the functional loss of the glycosyltransferase domain of *EXT1*, which resulted in dysfunction of heparan sulfate biosynthesis [31] and signal transduction. Consequently, chondrocyte proliferation and differentiation are not strictly regulated, leading to the development of MO. Further studies may be necessary to clarify

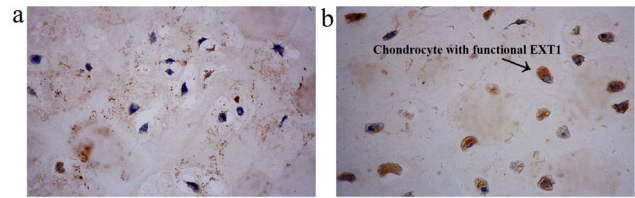


Figure 3. Immunohistochemistry screening of chondrocytes with functional *EXT1* in the superficial layers of cartilage caps of MO(a) and extragenetic solitary chondroma(b) (40×). The chondrocytes with functional *EXT1* in MO are less than those in extragenetic solitary chondroma. doi:10.1371/journal.pone.0072316.g003

the molecular mechanism of glycosyltransferase domain of *EXT1* gene involved in the development of MO.

In conclusion, we report a novel deleterious frameshift mutation, c.1457insG, in the glycosyltransferase functional domain of *EXT1* gene. The role of the c.1457insG mutation in the development of MO was supported by exome sequencing, Sanger sequencing validation and immunohistochemistry. Our results may be helpful for prenatal genetic screening and early diagnosis of MO.

Materials and Methods

Human Subjects

A Han Chinese MO family was investigated in this study (Fig. 1a). The proband (MO1) was a 16-year-old girl suffering from multiple exostoses involving humerus, femur, tibia and fibula (Fig. 1b–c). A group of 200 unrelated healthy subjects, matched for geographical ancestry, were included as controls. Clinical data of each subject was recorded by nurse-administered questionnaires. Each participant underwent careful clinical and computed radiography examination of long bones, truncal and acral joints by two or more experienced orthopedic experts. MO was diagnosed as multiple exostoses, arising from the lateral ends of humerus, ulna, femur, tibiae, fibulae or knee joints. 5 ml EDTA anticoagulated peripheral blood was drawn from 6 family members (Table 1) and from the 200 healthy subjects. Intact chondroma tissues were derived from MO1 and from a patient with extragenetic solitary chondroma (male, aged 3 years) via surgical resection. The collected chondroma tissues were immediately stored in 4% paraformaldehyde solution. This study was approved by the Institutional Review Board (IRB) of Xi'an Jiaotong University. All study subjects or their respective guardians gave their informed written consent by signing a document that had been carefully reviewed by the IRB of Xi'an Jiaotong University.

Table 1. Characteristics of study subjects in MO family.

	Age(years)	Sex	MO
MO1	16	Female	Affected
MO2	37	Female	Affected
MO3	38	Male	Unaffected
MO4	17	Male	Affected
MO5	20	Male	Unaffected
MO6	41	Female	Unaffected

doi:10.1371/journal.pone.0072316.t001

Exome Sequencing

Genomic DNA was extracted from 5 ml peripheral blood, using E.Z.N.A Blood DNA Midi Kit (Omega Bio-tek, Norcross, USA), according to the manufacturer's protocol. For exome sequencing, 15 µg of extracted DNA was randomly sheared into 250–300 bp fragment libraries by sonication. The purified DNA fragment libraries were captured by NimbleGen 2.1 M capture array (Roche NimbleGen, Madison, USA), followed by 90 bp paired-end sequencing on a HiSeq2000 platform (Illumina, San Diego, USA), according to the manufacturer's protocol.

Read Mapping and Variant Analysis

The raw image files of exome sequencing were processed using Illumina Pipeline software (version 1.7) for base calling. The sequences of each subject were generated as 90 bp pair-end reads. SOAPaligner software (<http://soap.genomics.org.cn/index.html>) was used to align clean reads to the UCSC human reference genome (version hg19, build 37.1, <http://genome.ucsc.edu/>). Based on SOAPaligner alignment results, SOAPsnp software (<http://soap.genomics.org.cn/index.html>) was used for SNP calling. BWA software (<http://bio-bwa.sourceforge.net/>) was used to identify insertions and deletions (indels) in targeted regions by aligning sequencing reads to the UCSC human reference genome. Low-quality SNP calls and indels were filtered out using the following criteria described previously [32]: 1) consensus quality score ≥ 20 ; 2) sequencing depth ≥ 4 and ≤ 500 ; 3) copy number ≤ 2 ; 4) distance between two adjacent SNPs ≥ 5 bp. Given that common genetic variations were unlikely to be the causal mutations of MO, all identified SNPs and indels were further filtered against the exome data of 30 Chinese Han individuals from the 1000 Genome Project (<ftp://www.1000genome.org>) and Chinese Han SNP data available in the dbSNP database (<http://www.ncbi.nlm.nih.gov/project/SNP/>, build 132). SIFT software (version 4.0, <http://sift.jcvi.org/>) was used to evaluate the impact of amino acid substitution on protein function and synonymous mutations were removed. Missense mutations and frame-shifting indels that were shared by the two affected family members undergoing exome sequencing, were retained as candidate causal mutations for following study.

References

- Bovee JV (2008) Multiple osteochondromas. *Orphanet J Rare Dis* 3: 3.
- Krooth RS, Macklin MT, Hilbish TF (1961) Diaphysial aclasis (multiple exostoses) on Guam. *Am J Hum Genet* 13: 340–347.
- Schmale GA, Conrad EU 3rd, Raskind WH (1994) The natural history of hereditary multiple exostoses. *J Bone Joint Surg Am* 76: 986–992.
- Legeai-Mallet L, Munnich A, Maroteaux P, Le Merrer M (1997) Incomplete penetrance and expressivity skewing in hereditary multiple exostoses. *Clin Genet* 52: 12–16.
- Hameetman L, Bovee JV, Taminiau AH, Kroon HM, Hogendoorn PC (2004) Multiple osteochondromas: clinicopathological and genetic spectrum and suggestions for clinical management. *Hered Cancer Clin Pract* 2: 161–173.
- Cook A, Raskind W, Blanton SH, Pauli RM, Gregg RG, et al. (1993) Genetic heterogeneity in families with hereditary multiple exostoses. *Am J Hum Genet* 53: 71–79.
- Ahn J, Ludecke HJ, Lindow S, Horton WA, Lee B, et al. (1995) Cloning of the putative tumour suppressor gene for hereditary multiple exostoses (EXT1). *Nat Genet* 11: 137–143.
- Wu YQ, Heutink P, de Vries BB, Sandkuijl LA, van den Ouweland AM, et al. (1994) Assignment of a second locus for multiple exostoses to the pericentromeric region of chromosome 11. *Hum Mol Genet* 3: 167–171.
- Ligon AH, Potocki L, Shaffer LG, Stüeckens D, Evans GA (1998) Gene for multiple exostoses (EXT2) maps to 11(p11.2p12) and is deleted in patients with a contiguous gene syndrome. *Am J Med Genet* 75: 538–540.
- Dobson-Stone C, Cox RD, Lonie L, Southam L, Fraser M, et al. (2000) Comparison of fluorescent single-strand conformation polymorphism analysis and denaturing high-performance liquid chromatography for detection of EXT1 and EXT2 mutations in hereditary multiple exostoses. *Eur J Hum Genet* 8: 24–32.
- Wuyts W, Van Hul W (2000) Molecular basis of multiple exostoses: mutations in the EXT1 and EXT2 genes. *Hum Mutat* 15: 220–227.
- Signori E, Massi E, Matera MG, Poscente M, Gravina C, et al. (2007) A combined analytical approach reveals novel EXT1/2 gene mutations in a large cohort of Italian multiple osteochondromas patients. *Genes Chromosomes Cancer* 46: 470–477.
- Francannet C, Cohen-Tanugi A, Le Merrer M, Munnich A, Bonaventure J, et al. (2001) Genotype-phenotype correlation in hereditary multiple exostoses. *J Med Genet* 38: 430–434.
- Alvarez C, Tredwell S, De Vera M, Hayden M (2006) The genotype-phenotype correlation of hereditary multiple exostoses. *Clin Genet* 70: 122–130.
- Wu CH, Fallini C, Ticozzi N, Keagle PJ, Sapp PC, et al. (2012) Mutations in the profilin 1 gene cause familial amyotrophic lateral sclerosis. *Nature* 488: 499–503.
- Varela I, Tarpey P, Raine K, Huang D, Ong CK, et al. (2011) Exome sequencing identifies frequent mutation of the SWI/SNF complex gene PBRM1 in renal carcinoma. *Nature* 469: 539–542.
- Thompson ER, Doyle MA, Ryland GL, Rowley SM, Choong DY, et al. (2012) Exome Sequencing Identifies Rare Deleterious Mutations in DNA Repair Genes FANCC and BLM as Potential Breast Cancer Susceptibility Alleles. *PLoS Genet* 8: e1002894.
- Zhang SQ, Jiang T, Li M, Zhang X, Ren YQ, et al. (2012) Exome sequencing identifies MVK mutations in disseminated superficial actinic porokeratosis. *Nat Genet* 44: 1156–1160.
- Lind T, Tufaro F, McCormick C, Lindahl U, Lidholt K (1998) The putative tumor suppressors EXT1 and EXT2 are glycosyltransferases required for the biosynthesis of heparan sulfate. *J Biol Chem* 273: 26265–26268.
- McCormick C, Duncan G, Goutsos KT, Tufaro F (2000) The putative tumor suppressors EXT1 and EXT2 form a stable complex that accumulates in the

Sanger Sequencing

Sanger sequencing validation was performed in all 6 MO family members (MO1-6) to determine whether the candidate mutations, identified by exome sequencing, co-segregated with MO in the MO family. The population frequencies of the candidate mutations co-segregated with MO were further estimated by Sanger sequencing of 200 unrelated controls with matched geographical ancestry. Sanger sequencing was performed using the standard protocol. Primers used for Sanger sequencing were designed with Primer3 software (<http://frodo.wi.mit.edu/>).

Histochemistry and Immunohistochemistry

The paraformaldehyde-fixed chondroma tissues from the MO patient and the extragenetic solitary chondroma patient were rinsed with phosphate buffered saline (PBS), decalcified and embedded in paraffin. Paraffin-embedded chondroma tissues were sectioned (5–8 µm thick), and placed on glass slides. For histochemistry, the tissue slides of MO were dewaxed in xylene, hydrated with graded ethanol, and stained by hematoxylin-eosin (HE), Safranin O (SO) and Toluidine Blue (TB), respectively.

For immunohistochemistry, the dewaxed and hydrated chondroma sections of MO and extragenetic solitary chondroma, were treated with 3% hydrogen peroxide solution for 10 min, rinsed with PBS, and incubated with rabbit polyclonal anti-EXT1 antibody (1:50 working dilution, abcam plc, MA, UK) at 4°C overnight. The chondroma sections were then incubated with secondary antibody (ZHONGSHAN golden bridge biotechnology, China) at 37°C for 15 min, exposed to Streptavidin-Horseradish Peroxidase at 37°C for 15 min, and stained with DAB substrate kit (Vector Laboratories, Burlingame, CA) and Meyer hematoxylin.

Author Contributions

Conceived and designed the experiments: FZ XG JW. Performed the experiments: FZ JLL YW ZTZ XZL LY. Analyzed the data: FZ LLD WJM. Contributed reagents/materials/analysis tools: QL YGZ. Wrote the paper: FZ XG.

- Golgi apparatus and catalyzes the synthesis of heparan sulfate. *Proc Natl Acad Sci U S A* 97: 668–673.
21. Duncan G, McCormick C, Tufaro F (2001) The link between heparan sulfate and hereditary bone disease: finding a function for the EXT family of putative tumor suppressor proteins. *J Clin Invest* 108: 511–516.
 22. Busse M, Feta A, Presto J, Wilen M, Gronning M, et al. (2007) Contribution of EXT1, EXT2, and EXTL3 to heparan sulfate chain elongation. *J Biol Chem* 282: 32802–32810.
 23. Ornitz DM (2000) FGFs, heparan sulfate and FGFRs: complex interactions essential for development. *Bioessays* 22: 108–112.
 24. Takada T, Katagiri T, Ifuku M, Morimura N, Kobayashi M, et al. (2003) Sulfated polysaccharides enhance the biological activities of bone morphogenetic proteins. *J Biol Chem* 278: 43229–43235.
 25. Bellaiche Y, The I, Perrimon N (1998) Tout-velu is a *Drosophila* homologue of the putative tumour suppressor EXT-1 and is needed for Hh diffusion. *Nature* 394: 85–88.
 26. Koziel L, Kunath M, Kelly OG, Vortkamp A (2004) Ext1-dependent heparan sulfate regulates the range of Ihh signaling during endochondral ossification. *Dev Cell* 6: 801–813.
 27. Bornemann DJ, Duncan JE, Staatz W, Selleck S, Warrior R (2004) Abrogation of heparan sulfate synthesis in *Drosophila* disrupts the Wingless, Hedgehog and Decapentaplegic signaling pathways. *Development* 131: 1927–1938.
 28. Wei G, Bai X, Gabb MM, Bame KJ, Koshy TI, et al. (2000) Location of the glucuronosyltransferase domain in the heparan sulfate copolymerase EXT1 by analysis of Chinese hamster ovary cell mutants. *J Biol Chem* 275: 27733–27740.
 29. Bernard MA, Hall CE, Hogue DA, Cole WG, Scott A, et al. (2001) Diminished levels of the putative tumor suppressor proteins EXT1 and EXT2 in exostosis chondrocytes. *Cell Motil Cytoskeleton* 48: 149–162.
 30. Wuyts W, Van Hul W, De Boule K, Hendrickx J, Bakker E, et al. (1998) Mutations in the EXT1 and EXT2 genes in hereditary multiple exostoses. *Am J Hum Genet* 62: 346–354.
 31. Cheung PK, McCormick C, Crawford BE, Esko JD, Tufaro F, et al. (2001) Etiological point mutations in the hereditary multiple exostoses gene EXT1: a functional analysis of heparan sulfate polymerase activity. *Am J Hum Genet* 69: 55–66.
 32. Wang JL, Yang X, Xia K, Hu ZM, Weng L, et al. (2010) TGM6 identified as a novel causative gene of spinocerebellar ataxias using exome sequencing. *Brain* 133: 3510–3518.