



Affordances in landscape integrated playgrounds (LIP)

Refshauge, Anne Dahl

Publication date:
2010

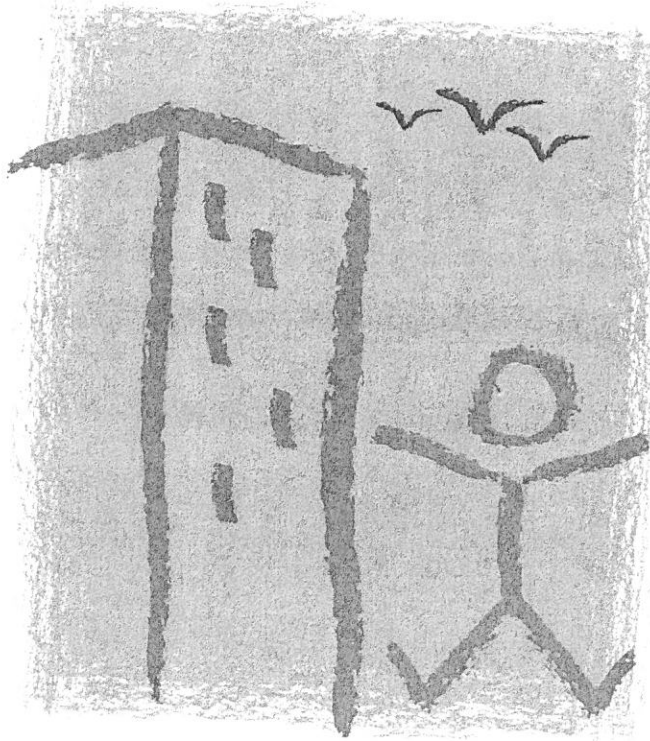
Document version
Publisher's PDF, also known as Version of record

Citation for published version (APA):
Refshauge, A. D. (2010). *Affordances in landscape integrated playgrounds (LIP)*. Abstract from Child in the City 2010, Florence, Italy.

ABSTRACT BOOK

27-29 OCTOBER 2010

Palazzo dei Congressi, Firenze Fiera, Florence, Italy



CHILD in the CITY

www.childinthecity.com



FORE

FACULTY OF LIFE SCIENCES
UNIVERSITY OF COPENHAGEN

Affordances in Landscape Integrated Playgrounds (LIP)
Anne Dahl Refshauge, PhD student and Landscape architect, Centre for
Planning, University of Copenhagen ^{DK}

Abstract

Children today are becoming increasingly urbanised and their possible everyday life are decreasing. This is alarming since direct exposure to childhood development and for the mental and physical health of children located in urban green spaces and may therefore play an important role in natural environments. However, commonly play equipment is not surrounded and seems detached from the nature context. This landscape integrated playground located in a park in Copenhagen, Denmark, the concept of LIP (Landscape Integrated Playgrounds) developed from field, and from the theories of affordances and sensory integration. together play equipment with natural elements, and the result is a playground with affordances and natural sensory experiences, and a playground in harmony.

PhD student and Landscape architect, Anne Dahl Refshauge (Presenting)
& Planning, University of Copenhagen, email: adre@life.ku.dk

Associate Professor, Dr. Ulrika Karlsson Stigsdotter,
University of Copenhagen, email: uks@life.ku.dk