



Mitochondrial DNA diversity and population structure of a forest-dependent rodent, *Praomys taitae* (Rodentia: Muridae) Heller 1911, in the fragmented forest patches of Taita Hills, Kenya

Nyakaana, S.; Tumusiime, C.; Oguge, N.; Siegismund, Hans Redlef; Arctander, Peter; Muwanika, V.

Published in:
South African Journal of Science

Publication date:
2008

Document version
Publisher's PDF, also known as Version of record

Citation for published version (APA):
Nyakaana, S., Tumusiime, C., Oguge, N., Siegismund, H. R., Arctander, P., & Muwanika, V. (2008). Mitochondrial DNA diversity and population structure of a forest-dependent rodent, *Praomys taitae* (Rodentia: Muridae) Heller 1911, in the fragmented forest patches of Taita Hills, Kenya. *South African Journal of Science*, 104(11/12), 499-504.

Mitochondrial DNA diversity and population structure of a forest-dependent rodent, *Praomys taitae* (Rodentia: Muridae) Heller 1911, in the fragmented forest patches of Taita Hills, Kenya

Silvester Nyakaana^{a,b,*}, Christopher Tumusiime^a, Nicholas Ouge^c, Hans R. Siegismund^d, Peter Arcander^e and Vincent Muwanika^a

The population genetic structure of the forest-dependent rodent, *Praomys taitae*, sampled from nine indigenous forest fragments distributed over three ranges of the Taita Hills in Kenya, was determined using mitochondrial DNA (mtDNA) control region sequence variation. Thirty-three unique haplotypes were observed in a total sample of 132 individuals, whereas the number of different haplotypes per population ranged from two to 10. An overall low nucleotide diversity of 0.9% was observed in the total sample but varied widely between populations (0.2–1.3%). Significant genetic differentiation was observed in 30 of the 36 possible pair-wise comparisons between populations, while a hierarchical AMOVA revealed significant genetic subdivision between groups of populations on the three hill ranges of Dabida, Mbololo and Kyulu ($F_{CT} = 0.404$, $P < 0.01$), among populations on each of the hill ranges ($F_{SC} = 0.112$, $P < 0.01$) and among populations in the total sample ($F_{ST} = 0.471$, $P < 0.001$). Demographic history analyses based on pair-wise nucleotide sequence mismatch distributions revealed that all the populations were in mutation-drift disequilibrium except the populations of the Kyulu and Ronge forest fragments.

Introduction

The Taita Hills in southeast Kenya (3°25'S, 38°20'E) represent the northernmost end of the eastern arch mountain ranges and lie at an altitude of 1500–2230 m above sea level. They are composed of three distinct mountain isolates of Sagalla, Dabida and Mbololo. They have existed since the Oligocene (c. 100 million years ago) and have been forested for most of this period.¹ Extensive forest loss over the last four decades, however, fueled by increased demand for agricultural land and hardwood products, has reduced the original indigenous forest cover to a patchwork of eleven forest fragments scattered across the hilltops and ridges totalling less than 400 hectares.^{2,3} Because of their age, isolated location, and comparatively stable climatic conditions, the Taita Hills are a global biodiversity hotspot characterized by high levels of endemism.^{4,5} Some of the

endemic fauna include the Taita reed frog (*Hyperolius viridiflavus glandicolor*), the Taita thrush (*Turdus helleri*), the Taita white-eye (*Zosterops polioaster silvanus*) and the Taita apalis (*Apalis thoracica fuscigularis*).

One of the attendant consequences of such fragmentation of terrestrial landscapes is the subdivision of a species into small and often localized populations, where mating is more likely to occur among closely related individuals, a phenomenon that culminates in reduced intra-population genetic diversity, increased genetic differentiation between populations, reduced fitness and accelerated local extinction of the populations.^{6–8} Whereas in highly vagile species the attendant consequences of habitat fragmentation can be mitigated by frequent migration between populations across the heterogeneous landscape,⁹ sedentary species with limited dispersal ability are particularly vulnerable.

In this study we examined the impact of this habitat fragmentation on the distribution of genetic diversity within and between the little-studied *Praomys taitae* populations in nine forest patches in the Taita Hills at the northernmost end of the eastern arc mountain ranges. *P. taitae* is a sedentary species with an average home range of approximately 0.22 hectares.¹⁰ Although many ecological and molecular genetic analyses of fauna of the Taita Hills have been accomplished,^{11–16} no assessment of the genetic status of this forest-dependent murid has been carried out. It is therefore imperative that long-term effective management strategies for species in fragmented habitats be designed with the aim of mitigating the deleterious effects of inbreeding and loss of genetic diversity; and this can be achieved only if an inventory of the genetic parameters of the species in question is carried out.

We used mtDNA control region sequence variation to examine the partitioning of genetic diversity within and between *P. taitae* populations in the fragmented landscape of the Taita Hills.

Methods

Sample collection and DNA extraction

Tissue samples were obtained from toe clips of 132 samples of *Praomys taitae* trapped using small (7.5 × 9 × 23 cm) Sherman's live traps from eight forest patches distributed on two large ridges of the Taita Hills (Dabida and Mbololo; 3°25'S, 38°20'E) and also from the Kyulu forest fragment (2°47.12'S, 37°52.14'E) located on a volcanic mountain ridge 40 km northwest of the Taita Hills. The study area has been described in detail.¹⁷ The spatial distribution of the forest fragments, characteristics of the study areas and number of samples obtained from each locality are summarized in Fig. 1 and Table 1, respectively. Samples were stored in cryo-vial tubes containing 25% dimethylsulphoxide (DMSO) in saturated sodium chloride¹⁸ at ambient temperature in the field and at –80°C in the laboratory. DNA extraction was done using the DNeasy tissue kit (Qiagen) following the manufacturer's instructions.

DNA amplification and sequencing

We used primer pairs *Ham1* (5'-CCACCATCAGCACCCAAA-3' and *Ham2* (5'-CGAGATGTCTTATTTAAGGGGAA-3')¹⁹ to amplify a 356-bp fragment of the 5' hyper-variable segment of the mitochondrial control region. Amplifications were done in 50 µl reaction volumes containing 2–5 ng of genomic DNA, 50 mM dNTPs, 10 pmol of each primer, 1 unit of *Taq* DNA polymerase enzyme and 20 mM of 10X PCR reaction buffer containing 1.5 mM MgCl₂. An Eppendorf mastercycler gradient (Eppendorf) was used with the following cycling parameters: an initial denaturation at 94°C for 5 min, 35 cycles at 94°C for 1 min, at 54°C for 2 min, at 72°C for 2 min and a final extension of 5 min at 72°C. Negative control PCR reactions containing all the reactants minus template DNA were included in all amplifications to check for possible contamination. PCR products were cleaned using the QIAquick PCR purification kit (Qiagen) and both strands of template DNA sequenced using an automated ABI 377 DNA sequencer (Applied Biosystems) using the Big Dye Terminator cycle sequencing kit version 2.0 (Applied Biosystems), following the manufacturer's standard protocol. The light and heavy

^aInstitute of Environment and Natural Resources, Makerere University, P.O. Box 7298, Kampala, Uganda.

^bBotany Department, Makerere University, P.O. Box 7062, Kampala, Uganda.

^cEarthwatch Institute, P.O. Box 10717-00100, Nairobi, Kenya.

^dInstitute of Biology, Department of Evolutionary Biology, University of Copenhagen, Universitetsparken 15, DK-2100, Copenhagen, Denmark.

^eInstitute of Molecular Biology, Department of Evolutionary Biology, University of Copenhagen, Universitetsparken 15, DK-2100, Copenhagen, Denmark.

*Author for correspondence. E-mail: snyakaana@muenr.mak.ac.ug

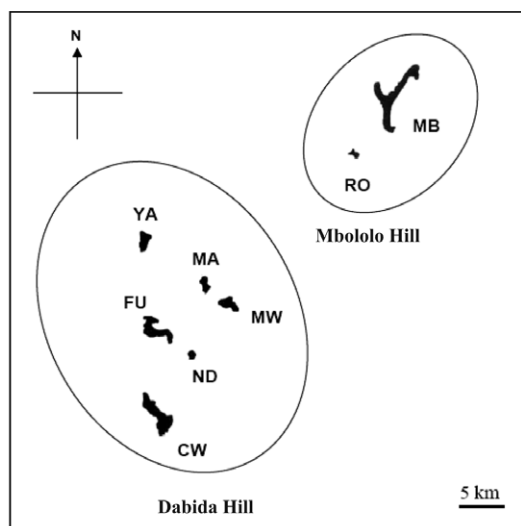


Fig. 1. Schematic map showing relative positions and sizes of eight of the nine sampled forest fragments in the Taita Hills. YA, Yale; FU, Fururu; ND, Ndiwenyi; MA, Macha; MW, Mwachora; CW, Chawia; RO, Ronge; MB, Mbololo. The Kyulu population (KY) lies off the map on Kyulu Hill, approximately 40 km to the north-west.

strand sequences of each individual were aligned and combined to produce a consensus sequence using the program SEQUENCHER™ version 4.2 for Windows® (Gene Codes Corporation). Consensus sequences were then manually aligned and analysed using the program BIOEDIT.²⁰

Mitochondrial DNA phylogenetic analyses

We used the computer program package MODELTEST²¹ to select the appropriate nucleotide substitution model that best fitted our data set. Consequently, the HKY+I+G model was chosen and incorporated in subsequent analyses. The evolutionary relationships between unique mtDNA haplotypes were estimated using distance methods implemented in TREECON version 1.3b,²² taking into consideration the model of DNA evolution identified by MODELTEST. The statistical support of each node in the haplotype tree was estimated using 100 bootstrap replicates of the data set.

Genetic diversity and population structure analyses

Nucleotide diversity within populations (π),²³ haplotype diversity H_T , inter-haplotype divergences and net percentage sequence divergence between populations were estimated using the program ARLEQUIN version 3.01.²⁴ The net inter-population distances were then used to estimate a distance-based population tree using the Neighbor package of the program PHYLIP version 3.5c.²⁵ A hierarchical AMOVA²⁶ as implemented in ARLEQUIN version 3.01²⁴ was used to analyse the partitioning of genetic diversity within and between populations and also between

groups of populations on the three hill ranges of Dabida, Mbololo and Kyulu (see Table 1). The extent of genetic differentiation between populations was quantified using the F -statistics²⁷ based on haplotype frequency and nucleotide sequence variations. The statistical significance of F_{ST} estimates was determined using 1000 permutations. We tested for correlation between within-population genetic diversity and forest fragment size using the program XLSTAT Pro version 7.5, a Microsoft Excel® add-in.

Population demographic history analysis

We computed pairwise nucleotide mismatch distributions among haplotypes and tested the data against the population sudden-expansion model²⁸ using the programs ARLEQUIN version 3.01²⁴ and DnaSP version 4.0.²⁹ A scenario of a recent demographic expansion or bottleneck is expected to generate a unimodal distribution of pairwise nucleotide differences between haplotypes, whereas in populations at demographic equilibrium, the pairwise mismatch distribution curve is expected to be multimodal.^{28,30} We validated the conformity of our data to the chosen population model using Tajima's D ³¹ and Fu's F_S ³² summary statistics plus the distribution of the SSD test statistic (the sum of squared differences) between the observed and the estimated mismatch distribution. We estimated the significance of the D and F_S statistics using a coalescent simulation algorithm under the hypothesis of selective neutrality and population equilibrium.³³ We interpreted significantly negative D and F_S values as being indicative of recent population expansion, significantly positive values as signifying significant effects of genetic drift (which are normally accentuated under conditions of a bottleneck) and significant SSD values as evidence for significant departure from the demographic model of sudden population expansion.

Results

mtDNA control region sequence variation and evolutionary relationships between haplotypes

Thirty-three unique haplotypes defined by 22 polymorphic sites were identified among the 132 individuals sampled from the nine localities. The individual sequences have been submitted to GenBank (FJ606713–FJ606745). The frequencies and distribution of the haplotypes observed in the different localities are shown in Fig. 2. Within-population haplotype diversities were relatively high (0.3–0.9), while the number of haplotypes per population ranged from two (MW) to ten (CW) (Table 2). Twenty-four of the haplotypes were locality specific, of which 19 were singletons. The most frequent haplotype was CW693, occurring in 22% of all the individuals sampled and distributed across five localities in the same hill range of Dabida. Only two haplotypes occurred on more than one hill range, haplotype YA692 (shared between Dabida and Mbololo) and CW704 (occurred in all three hill ranges of Kyulu, Dabida, and Mbololo).

Table 1. Summary of sampled forest fragments, showing number of samples from each locality, approximate area of patches, elevation, and degree of disturbance.

Forest patch	Number of samples (n)	Approximate area of remaining forest patch (ha)	Elevation (metres above sea level)	Level of disturbance	Hill ridge
Chawia (CW)	19	50	1587	Heavily disturbed; with exotic tree plantations growing inside; surrounded by agricultural land	Dabida
Ndiwenyi (ND)	15	1	600	Heavily disturbed; surrounded by agricultural land	
Fururu (FU)	17	12		Moderately disturbed fragment containing patches of plantation forest	
Yale (YA)	16	2	2104	Heavily disturbed and intermixed with plantations	
Macha (MA)	15	3	1653	Disturbed; surrounded by agricultural land	
Mwachora (MW)	12	4	1627	Fairly disturbed	
Mbololo (MB)	16	220	1800	Least disturbed	Mbololo
Ronge (RO)	15	1	1400	Composed of an extensive exotic <i>Pinus</i> plantation with interspersed small patches of indigenous forest	
Kyulu (KY)	7	200	1700	Relatively undisturbed	Kyulu

Table 2. Summary statistics for the *d*-loop sequence variation in the *Praomys taitae* populations.

	CW	ND	FU	YA	MA	MW	MB	RO	KY	Total
<i>N</i>	19	15	17	16	15	12	16	15	7	132
<i>H</i>	10	9	7	5	7	2	8	3	4	33
<i>h</i>	0.9	0.9	0.8	0.7	0.9	0.3	0.8	0.6	0.8	0.9
<i>P_s</i>	0.02	0.03	0.02	0.02	0.02	0.01	0.03	0.02	0.03	0.06
π	0.6	0.6	0.6	0.4	0.6	0.2	1.0	0.6	1.3	0.9

N = sample size, *H* = number of haplotypes in each population, *h* = haplotype diversity, *P_s* = fraction of segregating sites, π = percentage nucleotide diversity.

Six out of the seven individuals from Kyulu (KY) shared a locality-specific A/G transition and T/G transversion at positions 220 and 221, respectively, while three out of the seven individuals from the same population had a unique insertion of thymine at position 242 and four individuals had a unique A/G transition at position 243 (Fig. 2). These population-specific substitutions are indicative of limited or complete absence of contemporary gene flow between this forest patch and the rest of the fragments. Likewise, a population-specific A/T transversion substitution at position 7 was found in 53% of the individuals from the Mbololo population. An overall transition: transversion ratio of approximately 4:1 was observed. The overall nucleotide diversity in the total sample was 0.9% but varied widely across populations, ranging from 0.2% in Mwachora (MW) to 1.3% in Kyulu (KY) (Table 2). A significantly positive correlation was observed between the amount of genetic diversity in the different populations and the forest patch size (as indicated in Table 1) from which they were sampled ($r = 0.84$; $P < 0.01$).

While the neighbor-joining tree showed no locality-specific structuring of the different haplotypes (Fig. 3), the population tree grouped the populations in three distinct clades concordant with the three hill ranges from which they were sampled (Fig. 4).

Population structure

Inter-population genetic divergence quantified using *F_{ST}* statistics showed significant genetic differentiation ($P < 0.05$) in 83% of the 36 possible pair-wise population comparisons, with all comparisons of populations from different hill ranges being significant, thus suggesting limited gene flow between the contemporary populations in the different forest patches on each hill range and complete isolation of the populations on the different hill ranges (Table 3). A hierarchical analysis of molecular variance (AMOVA) also confirmed the highly significant genetic subdivision between the forest fragments on the three hill ranges of Dabida, Mbololo and Kyulu ($F_{CT} = 0.404$, $P < 0.01$), among populations on each of the hill ranges ($F_{SC} = 0.112$, $P < 0.01$) and among populations in the total sample ($F_{ST} = 0.471$, $P < 0.001$). The AMOVA attributed 53% of the total variation to variations between populations sampled from the same hill range.

Demographic history of the populations

The mismatch frequency spectra for the nine populations are shown in Fig. 5. The observed unimodal mismatch frequency dis-

	1122222 222222223 33 240500122 2344477891 25 7749229301 8923504512 54											Σ
	DABIDA						MBOLOLO			KYULU		
	CW	ND	FU	YA	MA	MW	MB	RO	KY			
1 CW693	TTCAAAATAT	TG-GGCAAAG	CG	7	2	8	1	10			28	
2 CW695GA	..		2	1	6	2	3	2		16	
3 CW704A.....	..		1	1	3	4	1		5	16	
4 CW702GA	T.		2			4				6	
5 CW709A.....	T.		2	3						5	
6 CW706G.			1							1	
7 CW707G.....	A.....	..	1							1	
8 CW708	C.....A.....	T.		1							1	
9 CW710G.	T.		1							1	
10 CW712G.....			1							1	
11 ND633T.				4		4				8	
12 ND641	C.....T.			1		1					2	
13 ND648C.....			1	3						4	
14 ND639G.G.....	G.	T.	1							1	
15 ND642C.....	A.....	T.	1							1	
16 FU581G.....	GA	..			2					2	
17 FU582A.....	T.			1						1	
18 FU584G.....	..			1						1	
19 FU585G.....	A.....	..		1						1	
20 YA687T.....	A.....	..			1					1	
21 YA692G.....	G.....	..			1		7	9		17	
22 MA732C.....	T.								1	1	
23 MB604	A.....G.....	G.....	..					1			1	
24 MB605	A.....A.....	T.						2			1	
25 MB606	A.....GA	T.						1			1	
26 MB608	A.....A.....	..						1			1	
27 MB609	A.....G.....	G.....	T.					2			2	
28 MB611	A.....G.....	A.....GG	..					1			1	
29 MB612	AA.....GA	..						1			1	
30 RO728GGA	..							1		1	
31 KY665G.G.....	CG	TA.....GG	A	T.					3	3	
32 KY664GG	A	A.....A	T.						1	1	
33 KY671GGA	T.							2	2	
No. of bases	322222222 221222222						32				132	

Fig. 2. Distribution of 33 observed mtDNA control region haplotypes in the nine populations from the three hill ranges of Dabida, Mbololo and Kyulu. The vertical numbers above the nucleotide sequences indicate the positions of polymorphic sites, e.g. the first polymorphic position in the sequences is 7, the next one is 27, followed by 44, etc. Dots indicate the same nucleotide is present as in haplotype 1. Numbers under each population indicate the number of individuals with each particular haplotype. Population-specific transitions, transversions and deletions/insertions are shaded.

Table 3. Population pair-wise *F_{ST}* values based on pair-wise haplotype nucleotide differences between populations.

	CW	ND	FU	YA	MA	MW	MB	RO
ND	0.037 ^{n.s.}							
FU	0.092*	0.257**						
YA	0.036 ^{n.s.}	0.176**	0.121*					
MA	0.068 ^{n.s.}	0.117*	0.174**	0.281**				
MW	0.068 ^{n.s.}	0.247**	0.144*	0.034 ^{n.s.}	0.284**			
MB	0.347**	0.326**	0.399**	0.359**	0.397**	0.422**		
RO	0.356**	0.368**	0.396**	0.315**	0.471**	0.436**	0.084 ^{n.s.}	
KY	0.533**	0.507**	0.538**	0.602**	0.496**	0.629**	0.519**	0.585**

n.s., not significant at 5% level; * $P < 0.05$; ** $P < 0.01$

tributions of all the populations sampled from the Dabida hill range (CW, ND, FU, YA, MA and MW) showed excesses of mutations that appeared in only a few individuals and a deficiency of mutations shared by many individuals in the population—a scenario in conformity with the recent expansion model. On the other hand, the mismatch distributions of populations sampled

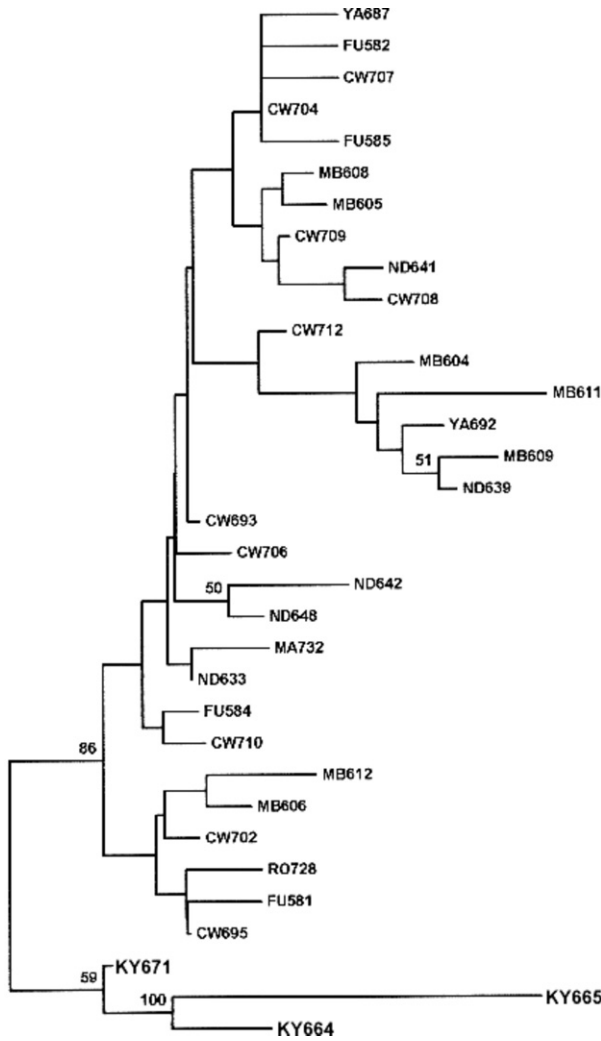


Fig. 3. Neighbor-joining tree showing the evolutionary relationships between the 33 haplotypes of *Praomys taitae* from the nine localities. Percentage bootstrap values greater than 50 are indicated along the branches.

from Kyulu Hills (KY) and Mbololo Hill range (MB and RO) were bimodal and fitted poorly with their corresponding distributions expected under the recent expansion model.

Fu's F_s neutrality test,³² however, revealed significant signatures of recent population expansion in only two populations; Chawia ($F_s = -4.81$; $P < 0.01$) and Ndiwenyi ($F_s = -4.32$; $P < 0.01$). Tajima's D and SSD statistics were in contrast not significant (Table 4). Conversely, the populations of Kyulu and Ronge had mismatch frequency spectra that significantly deviated from what would

Table 4. Demographic history summary statistics of the nine *Praomys taitae* populations.

Population	SSD (P-value)	D (P-value)	F_s (P-value)
Chawia (CW)	0.011 (0.09)	0.01 (0.58)	-4.81 (< 0.01)*
Ndiwenyi (ND)	N/A	-1.24 (0.11)	-4.32 (< 0.01)*
Fururu (FU)	0.034 (0.11)	0.87 (0.83)	-1.23 (0.21)
Yale (YA)	<0.001 (0.95)	-1.14 (0.13)	-0.54 (0.36)
Macha (MA)	0.007 (0.35)	0.185 (0.61)	-1.97 (0.07)
Mwachora (MW)	0.102 (0.07)	-0.248 (0.34)	1.38 (0.70)
Mbololo (MB)	0.029 (0.33)	1.044 (0.87)	-1.02 (0.29)
Ronge (RO)	0.325 (< 0.01)*	0.763 (0.79)	3.08 (0.92)
Kyulu (KY)	0.166 (0.04)*	0.10 (0.56)	1.79 (0.80)
Total sample	-	-0.758 (> 0.10)	-18.60 (>0.10)

* $P < 0.05$; N/A = least-squares procedure to fit model of mismatch distribution and observed distribution did not converge after 1800 steps. SSD = sum of squared differences, D = Tajima's statistic, F_s = Fu's statistic.

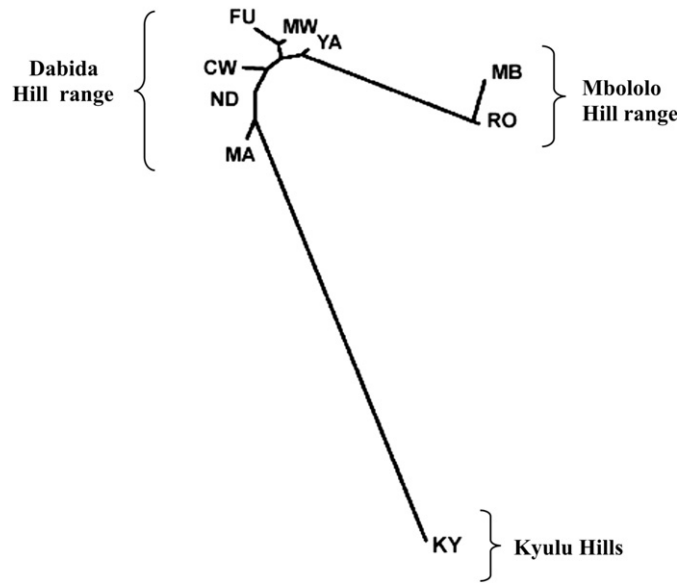


Fig. 4. An unrooted NJ population tree showing the evolutionary relationship between the populations sampled from the three hill ranges of Dabida, Mbololo and Kyulu. The population codes are the same as used in Table 1.

be expected under the sudden expansion model as indicated by the significantly positive values of the SSD test statistics (Table 4).

Discussion

Population genetic structure

An overall nucleotide diversity of 0.9% observed in this study is less than what has previously been found in other rodents such as the subterranean mole rats (*Spalax ehrenbergi*, $\pi = 3.86\%$; *Heterocephalus glaber*, $\pi = 2.9\%$; *Cryptomys hottentotus*, $\pi = 1.8\%$),³⁴ Amazonian spiny rats (*Proechimys steerei*, 7.1%; *Proechimys simonsi*, 11.8%),³⁵ the Siberian lemming (*Lemmus sibiricus*, 1.8–2.8%),³⁶ and the dusky-footed woodrat (*Neotoma fuscipes*, $\pi = 1.0$ –3.9%).³⁷ However, this value is higher than what was recently observed in the plains woodrat, *Neotoma micropus* ($\pi = 0.8\%$).³⁸ The low nucleotide diversity indices observed in most of the studied populations (Table 2) indicate that the populations possess a large number of closely related haplotypes, a scenario that would be expected after a recent demographic event such as a bottleneck or a population expansion. Although the spatial distribution of the haplotypes indicated that they were locality-specific (Fig. 2), they exhibited a shallow and poorly resolved phylogenetic structure (Fig. 3), confirming their very recent common ancestry.

Our data show limited female dispersal between populations as evidenced by the observed significant genetic differentiation between most of the populations. The observed limited gene flow, high haplotype diversity, low nucleotide diversity and a significant correlation between nucleotide diversity and fragment size all suggest that genetic drift is the key factor controlling the distribution of genetic diversity in these fragmented populations. These observations contradict the previously reported panmixia and absence of differentiation in *P. taitae* populations that was based on morphometric and cytogenetic studies.⁴ Genetic studies on other co-distributed avian species present differing scenarios: strong differentiation between fragments and mutation-drift disequilibrium have been reported for the endangered Taita thrush (*Turdus helleri*),¹⁴ whereas habitat fragmentation was found to have no apparent effect on the dispersal of the white-starred robin (*Pogonochila stellata*) between different

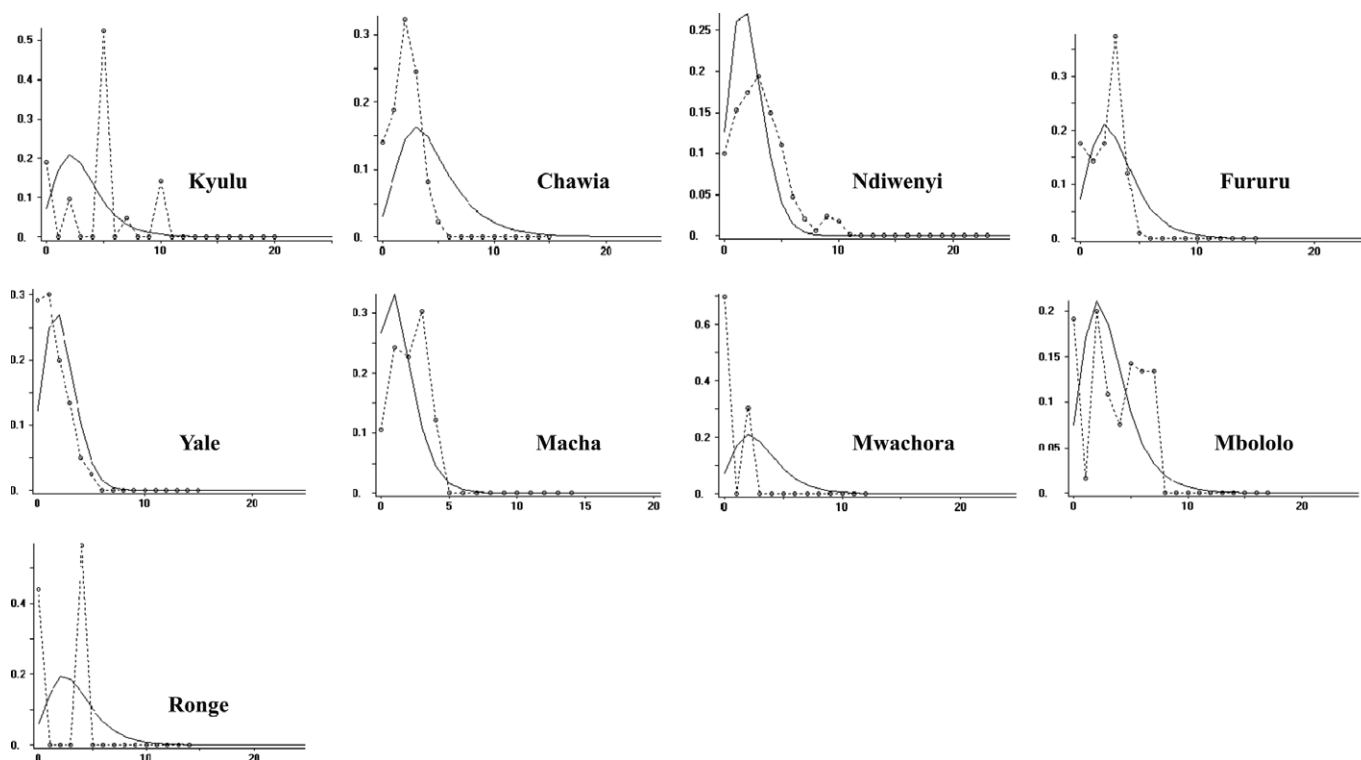


Fig. 5. Observed (****) and expected (—) pair-wise mismatch distributions in the nine *Praomys taitae* populations under the sudden population expansion model. The number of pair-wise nucleotide differences between haplotypes is represented on the abscissa whereas their frequencies are represented on the ordinate axis.

forest fragments.¹⁵ The occurrence of significant genetic differentiation between fragmented populations of *P. taitae* coupled with reduced intra-population diversity has serious conservation implications for such a non-dispersing, resource-limited and forest-dependent species. It is a well-established ecological fact that altered edge effects due to forest habitat fragmentation favour invasions of fragmented patches by highly competitive grassland generalist species with no specialized requirement for habitat use. Therefore, any intensive inter-specific competitive interaction between the invasive generalists and the forest-dependent *P. taitae* is bound to impact negatively on the survival of the latter, and may even act as a major driving force for local extinctions of the species in some of the forest patches.

In the event that some of the populations become locally extinct, rapid recolonization from nearby populations is unlikely given the limited dispersal ability of the species plus the human-induced loss of connectivity between the different forest patches.

Population demography

Tajima's and Fu's tests for neutrality of mutations used in this study have been reported to be unable to disentangle the effects of true selective departures from neutrality (such as those caused by purifying selection and genetic hitchhiking) from those due to demographic processes such as population expansion on mismatch distribution profiles. For example, both statistics can be significantly negative due to purifying selection, genetic hitchhiking or population expansion while both of them can be significantly positive under scenarios of population bottlenecks and balancing selection at linked loci.^{31,39} However, because the data used in this study are derived from the selectively neutral non-coding region of the mitochondrial genome (control region), it is highly unlikely that the observed significant deviations from neutrality are due to selection. The high haplotype diversity, low nucleotide diversity, unimodal mismatch

distributions, and significantly negative values of Fu's F_s statistic (see Table 2, Fig. 5 and Table 4) all support a recent population expansion from a smaller founder population as the most plausible explanation for the observed significant deviations from neutrality in the Chawia and Ndiwenyi populations. The observation that population expansion in the Chawia and Ndiwenyi populations was detected by Fu's F_s but not Tajima's D statistic attests to the fact that Fu's F_s statistic is a more powerful tool for detecting deviations from neutrality when testing for population expansion and genetic hitchhiking in populations.⁴⁰⁻⁴²

This research was funded by the Danish International Development Agency (DANIDA) under the Wildlife Genetics Project, a collaborative project between the University of Copenhagen (Denmark) and Makerere University (Uganda). DNA samples were obtained through research collaboration with the Zoology Department, Kenyatta University, Kenya.

Received 21 July 2007. Accepted 14 October 2008.

- Rogo L. and Oguge N. (2000). The Taita Hills forest remnants: a disappearing world heritage. *AMBIO* 29(8), 522-523.
- Beentje H.J. (1987). An ecological and floristic study of the forests of the Taita Hills, Kenya. *Utafiti* 1, 23-66.
- Brooks T., Lens L., Barnes J., Barnes R., Kihuria J.K. and Wilder C. (1998). The conservation status of the forest birds of the Taita Hills, Kenya. *Bird. Cons. Int.* 8, 119-139.
- Bytebier B. (2001). *Taita Hills Biodiversity Project Report*, pp. 40-41. National Museums of Kenya, Nairobi.
- Myers N., Mittermeier R.A., Mittermeier C.G., da Fonseca A.B. and Kent J. (2000). Biodiversity hotspots for conservation priorities. *Nature* 403, 853-858.
- Saccheri I., Kuussaari M., Kankare M., Vikman P., Fortelius W. and Hanski I. (1998). Inbreeding and extinction in a butterfly metapopulation. *Nature* 392, 491-493.
- Brooks B.W. Tonkyn D.W., O'Grady J.J. and Frankham R. (2002). Contribution of inbreeding to extinction risk in threatened species. *Cons. Ecol.* 6, 16.
- Frankham R., Ballou J.D. and Briscoe D.A. (2002). *Introduction to Conservation Genetics*, pp. 309-335. Cambridge University Press, Cambridge.
- Hanski I. (1999). *Metapopulation Ecology*. Oxford University Press, Oxford.
- Rosevear D.R. (1969). *The Rodents of West Africa*. British Museum (Natural History), London.
- Lens L., Galbusera P., Brooks T., Waiyaki E. and Schenck T. (1998). Highly

- skewed sex ratios in the critically endangered Taita thrush as revealed by CHD genes. *Biodiv. Cons.* 7, 869–873.
12. Lens L. and Van Dongen S. (1999). Evidence for organism-wide asymmetry in five bird species of a fragmented afro tropical forest. *Proc. R. Soc. Lond. B* 266, 1055–1060.
 13. Lens L., Van Dongen S., Wilder C.M., Brooks T.M. and Matthyssen E. (1999). Fluctuating asymmetry increases with habitat disturbance in seven bird species of a fragmented afro tropical forest. *Proc. R. Soc. Lond. B* 266, 1241–1246.
 14. Galbusera P., Lens L., Waiyaki E., Schenc, T. and Matthyssen E. (2000). Genetic variability and gene flow in the globally, critically endangered Taita thrush. *Cons. Genet.* 1, 45–55.
 15. Galbusera P., Githiru M., Lens L. and Matthyssen E. (2004). Genetic equilibrium despite habitat fragmentation in an Afrotropical bird. *Mol. Ecol.* 13, 1409–1421.
 16. Githiru M. and Lens L. (2006). Demography of an Afrotropical passerine in a highly fragmented landscape. *Anim. Cons.* 9, 21–27.
 17. Oguge N., Hutterer R., Odhiambo R. and Verheyen W. (2004). Diversity and structure of shrew communities in montane forests of southeast Kenya. *Mammal. Biol.* 69, 289–301.
 18. Amos W. and Hoelzel, A.R. (1991). Long-term preservation of whale skin for DNA analysis. In *Genetic Ecology of Whales and Dolphins*, ed. A. R. Hoelzel, pp. 99–104. Report of the International Whaling Commission (special issue 13).
 19. Okello J.B.A., Nyakaana S., Masembe C., Siegmund H.R. and Arctander P. (2005). Mitochondrial DNA variation of the common hippopotamus: evidence for a recent population expansion. *Heredity* 95, 206–215.
 20. Hall T.A. (1999). BIOEDIT: a user-friendly biological sequence alignment editor and analysis program for Windows 95/98/NT. *Nucl. Acids Symp.* 41, 95–98.
 21. Posada D. and Crandall A.K. (1998). MODELTEST: testing the model of DNA substitution. *Bioinform. Appl. Notes* 14, 817–818.
 22. Van de Peer Y. and De Wachter R. (1994). TREECON for Windows: a software package for the construction and drawing of evolutionary trees for the Microsoft Windows environment. *Comp. Appl. Biosci.* 10, 569–570.
 23. Nei M. (1987). *Molecular Evolutionary Genetics*. Columbia University Press, New York.
 24. Excoffier L., Laval G. and Schneider S. (2005). ARLEQUIN version 3.01: An integrated software package for population genetics data analysis. *Evol. Bioinform.* 1, 47–50.
 25. Felsenstein J. (1993). PHYLIP (Phylogeny Inference Package version 3.5c). Distributed by the author. Department of Genetics, University of Washington, Seattle.
 26. Excoffier L., Smouse P.E. and Quattro J.M. (1992). Analysis of molecular variance inferred from metric distances among DNA haplotypes, application to human mitochondrial DNA restriction data. *Genetics* 131, 479–491.
 27. Wright S. (1951). The genetic structure of populations. *Annal. Eugen.* 15, 323–354.
 28. Rogers A.R. and Harpending H. (1992). Population growth makes waves in the distribution of pair-wise genetic differences. *Mol. Biol. Evol.* 9, 552–569.
 29. Rozas J. and Rozas R. (1999). DnaSP version 4.0: an integrated program for molecular population genetics and molecular evolution analysis. *Bioinformatics* 15, 174–175.
 30. Harpending H., Batzer M., Gurven M., Jorde L., Rogers A. and Sherry S. (1998). Genetic traces of ancient demography. *Proc. Natl Acad. Sci. USA* 95, 1961–1967.
 31. Tajima F. (1989). Statistical methods for testing the neutral mutation hypothesis for DNA polymorphism. *Genetics* 123, 585–595.
 32. Fu Y.X. and Li W. (1993). Maximum likelihood estimation of population parameters. *Genetics* 134, 1261–1270.
 33. Hudson R.R. (1990). Gene genealogies and the coalescent process. In *Oxford Surveys in Evolutionary Biology*, eds D.J. Futuyama and J.D. Antonovics, pp. 1–44. Oxford University Press, New York.
 34. Nevo E., Rodney L.H., Hiromichi Y. Kimberlyn, N. and Naoto H. (1993). Mitochondrial DNA polymorphisms in subterranean mole rats of the *Splax enhenbergi* super species in Israel and its peripheral isolates. *Mol. Biol. Evol.* 10(3), 590–604.
 35. Matocq M.D., Patton J.L. and Dasilva M.N.F. (2000). Population genetic structure of two ecologically distinct Amazonian spiny rats: separating history and current ecology. *Evolution* 54, 1423–1432.
 36. Ehrlich D. and Stenseth N.C. (2001). Genetic structure of Siberian lemmings (*Lemmus sibiricus*) in a continuous habitat: large patches rather than isolation by distance. *Heredity* 86, 716–730.
 37. Matocq M.D. (2002). Phylogeographical structure and regional history of the dusky-footed woodrat, *Neotoma fuscipes*. *Mol. Ecol.* 11, 229–242.
 38. Méndez-Harclerode F.M., Delton H.J., Charles FF, Mary L., Milazzo M.L., Ruthven D.C. and Bradley R.D. (2005). Genetic diversity within the southern plains woodrat (*Neotoma micropus*) in southern Texas. *J. Mammal.* 86, 180–190.
 39. Tajima F. (1989). The effect of change in population size on DNA polymorphism. *Genetics* 123, 597–601.
 40. Braverman J.M., Hudson R.R., Kaplan N.L., Langley C.H. and Stephan W. (1995). The hitchhiking effect on the site frequency spectrum of DNA polymorphisms. *Genetics* 140, 783–796.
 41. Simonsen K.L., Churchill G.A. and Aquadro C.F. (1995). Properties of statistical tests of neutrality for DNA polymorphism data. *Genetics* 141, 413–429.
 42. Fu Y.X. (1997). Statistical tests of neutrality of mutations against population growth, hitchhiking and background selection. *Genetics* 147, 915–92.