

1-1-2006


Sponges of Navassa

Janie L. Wulff
Florida State University

Timothy D. Swain
Florida State University, tswain@nova.edu

Find out more information about [Nova Southeastern University](#) and the [Halmos College of Natural Sciences and Oceanography](#).

Follow this and additional works at: https://nsuworks.nova.edu/occ_facreports

 Part of the [Marine Biology Commons](#), and the [Oceanography and Atmospheric Sciences and Meteorology Commons](#)

NSUWorks Citation

Janie L. Wulff and Timothy D. Swain. 2006. Sponges of Navassa . https://nsuworks.nova.edu/occ_facreports/130.

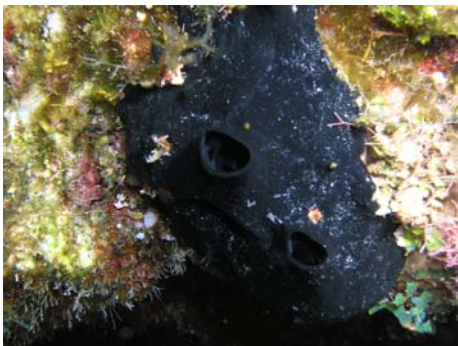
This Report is brought to you for free and open access by the Department of Marine and Environmental Sciences at NSUWorks. It has been accepted for inclusion in Marine & Environmental Sciences Faculty Reports by an authorized administrator of NSUWorks. For more information, please contact nsuworks@nova.edu.

Sponges of Navassa

This photographic guide was compiled from data collected during the 2004 NOAA survey of the coral reefs of Navassa and does not represent a comprehensive list of all Porifera in Navassa. Specifically missing are taxa that inhabit caves, overhangs, vertical walls; species that live in the interstices of the reef framework; and species found at depths greater than 50 meters. Specimens were identified by Janie Wulff and Timothy Swain of Florida State University using a combination of digital photography, field observations, and microscopic examination of siliceous spicules. Genera are organized into higher taxa according to *Systema Porifera*, Hooper & van Soest (ed.) 2002. We have purposefully erred on the side of splitting similar taxa for which a species designation could not be definitively assigned, in order to demonstrate the range of forms observed in this survey. Some species are shown with symbiotic zoanths on the surface of the sponge, but zoanths are not always present and should not be relied on for identification of the sponge taxa.

Taxonomy:

Homosclerophorida	Iotrochotidae	<i>Cribrochalina dura</i>
Plankinidae	<i>Iotrochota birotulata</i>	<i>Cribrochalina vasculum</i>
<i>Plakortis</i> sp. A-C	<i>Iotrochota cf. birotulata</i>	<i>Niphates digitalis</i>
Spirophorida	Mycalina	<i>Niphates erecta</i>
Tetillidae	Desmacellidae	Petrosina
<i>Cinachyrella kuekenthali</i>	<i>Neofibularia nolitangere</i>	Phloeodictyidae
Astrophorida	Halichondrida	<i>Aka coralliphaga</i>
Geodiidae	Axinellidae	<i>Oceanapia bartschi</i>
<i>Erylus</i> sp.	<i>Ptilocaulis walpersi</i>	Petrosiidae
<i>Geodia neptuni</i>	Dictyonellidae	<i>Xestospongia muta</i>
Hadromerida	<i>Scopalina ruetzleri</i>	Dictyoceratida
Clionidae	<i>Svenzea zeai</i>	Irciniidae
<i>Cliona caribbaea</i>	Halichondriidae	<i>Ircinia strobilina</i>
<i>Cliona delitrix</i>	<i>Topsentia</i> sp.	<i>Ircinia</i> sp. B-F
<i>Cliona varians</i>	Agelasida	Thorectida
Spirastrellidae	Agelasiidae	<i>Smenospongia</i> sp. A-B
<i>Spirastrella hartmani</i>	<i>Agelas clathrodes</i>	Verongida
<i>Spirastrella</i> sp. A-B	<i>Agelas conifera</i>	Aplysinidae
Chondrosida	<i>Agelas dispar</i>	<i>Aplysina cf. archeri</i>
Chondrillidae	<i>Agelas sceptrum</i>	<i>Aplysina cauliformis</i>
<i>Chondrilla cf. nucula</i>	<i>Agelas schmidti</i>	<i>Aplysina fistularis</i>
<i>Chondrosia</i> sp.	<i>Agelas sventres</i>	<i>Aplysina lacunosa</i>
Pocilsclerida	<i>Agelas wiedenmayeri</i>	<i>Aplysina</i> sp. A-B
Microcionina	<i>Agelas</i> sp. A-H	<i>Verongula gigantea</i>
Microcionidae	Haplosclerida	<i>Verongula rigida</i>
<i>Clathria schoenus</i>	Haplosclerina	uncertain family
Raspailiidae	Callyspongiidae	<i>Aiolochoxia crassa</i>
<i>Ectyoplasia ferox</i>	<i>Callyspongia plicifera</i>	unidentified "keratose"
Myxillina	<i>Callyspongia vaginalis</i>	"keratose" A-B
Hymedesmiidae	Niphatidae	
<i>Phorbas amaranthus</i>	<i>Amphimedon compressa</i>	



Plakortis sp. A



Plakortis sp. B



Plakortis sp. C

Sponges of Navassa



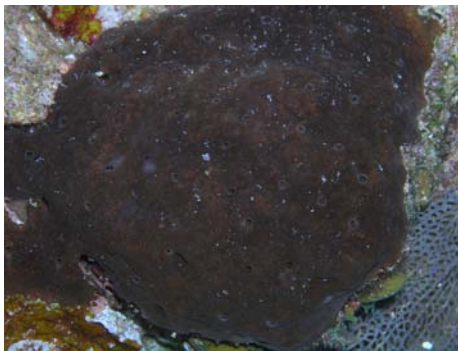
Cinachyrella kuekenthali



Erylus sp.



Geodia neptuni



Cliona caribbaea



Cliona delitrix



Cliona varians



Spirastrella hartmani



Spirastrella sp. A



Spirastrella sp. B



Chondrilla cf. *nucula*



Chondrosia sp.



Clathria schoenus

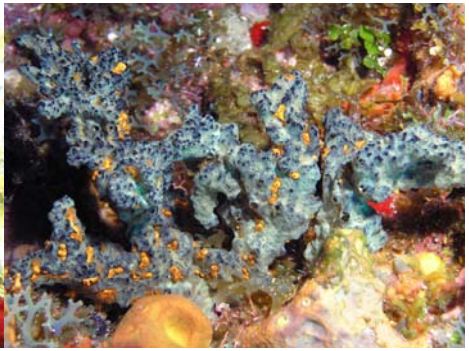
Sponges of Navassa



Ectyoplasia ferox



Phorbis amaranthus



Iotrochota birotulata
Parazoanthus swiftii



Iotrochota cf. birotulata
Parazoanthus swiftii



Neofibularia nolitangere



Ptilocaulis walpersi



Scopalina ruetzleri



Svenzea zeai



Topsentia sp.
Parazoanthus swiftii



Agelas clathrodes



Agelas conifera



Agelas dispar

Sponges of Navassa



Agelas sceptrum



Agelas schmidti
(and *Agelas dispar*)



Agelas sventres



Agelas wiedenmayeri



Agelas sp. A



Agelas sp. B



Agelas sp. C



Agelas sp. D
Parazoanthus puertoricense



Agelas sp. E



Agelas sp. F



Agelas sp. G
Parazoanthus puertoricense



Agelas sp. H
Parazoanthus puertoricense

Sponges of Navassa



Callyspongia plicifera



Callyspongia vaginalis



Amphimedon compressa



Cribrochalina dura



Cribrochalina vasculum
Epizoanthus cutressi



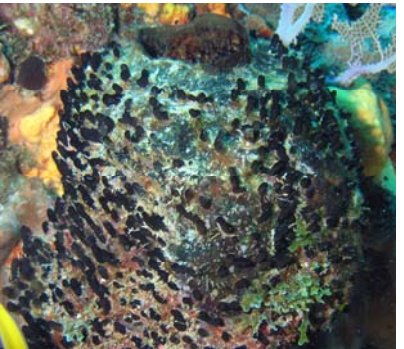
Niphates digitalis



Niphates erecta
Parazoanthus parasiticus



Aka coralliphaga



Oceanapia bartschi



Xestospongia muta

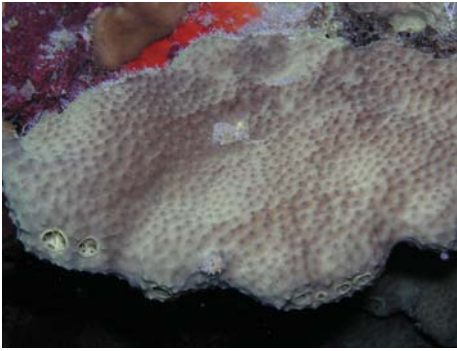


Ircinia strobilina

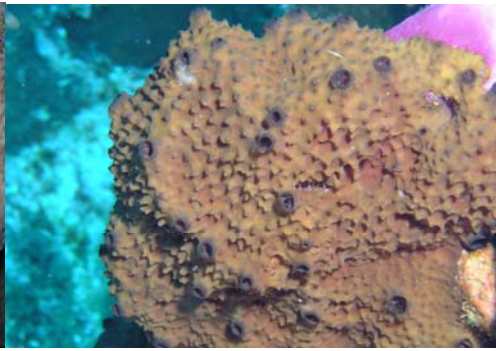


Ircinia sp. B

Sponges of Navassa



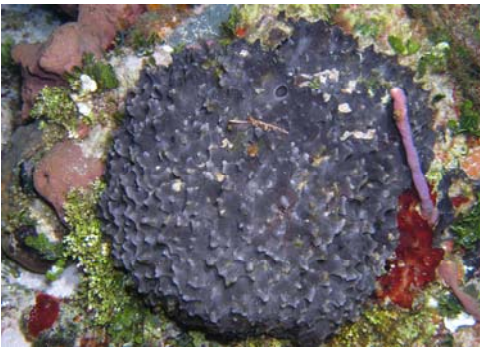
Ircinia sp. C



Ircinia sp. D



Ircinia sp. E



Ircinia sp. F



Smenospongia sp. A



Smenospongia sp. B



Aplysina cf. *archeri*



Aplysina cf. *archeri*



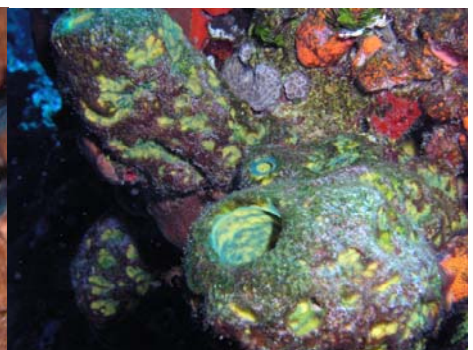
Aplysina *cauliformis*



Aplysina *fistularis*

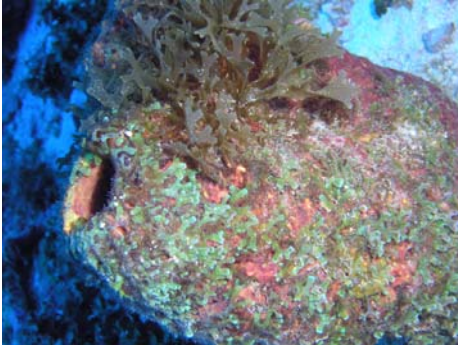


Aplysina *fistularis*



Aplysina *lacunosa*

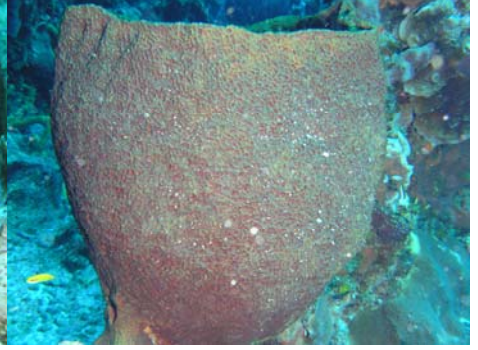
Sponges of Navassa



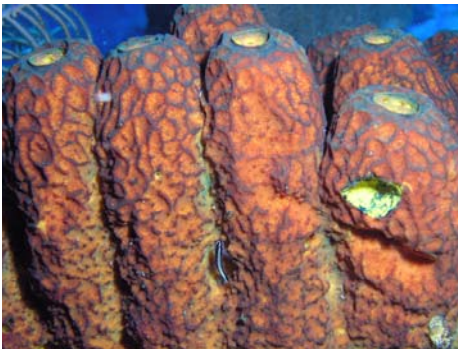
Aplysina sp. A



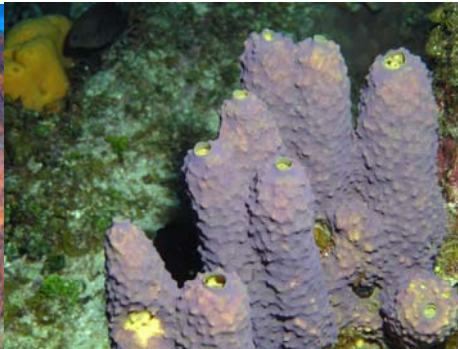
Aplysina sp. B



Verongula gigantea



Verongula rigida



Aiolochoiria crassa



unidentified "keratose" A



unidentified "keratose" B