

# Primary oral manifestation of Langerhans cell histiocytosis refractory to conventional therapy but susceptible to BRAF-specific treatment: a case report and review of the literature

Norbert Neckel<sup>1</sup>, Andrej Lissat, Arendt von Stackelberg, Nadine Thieme, Mohamed-Salim Doueiri, Birgit Spors, Benedicta Beck-Broichsitter, Max Heiland and Jan-Dirk Raguse

**Abstract:** Langerhans cell histiocytosis (LCH) is a diagnostic and therapeutic challenge. We report on a rare case of its primary oral manifestation that was treated successfully with the BRAF-specific agent, vemurafenib, after insufficient standard LCH treatment. This case underlines the importance of proper diagnosis and the evaluation of targeted therapy as a valuable tool in LCH treatment. Furthermore, the close collaboration of surgeons, oncologists, and dentists is mandatory to ensure adequate treatment, restore the stomatognathic system in debilitating post-treatment situations, improve quality of life, and ensure effective disease control in infants and young patients.

**Keywords:** BRAF inhibitor, BRAF mutation, BRAF V600E-targeted therapy, dental and oral rehabilitation, Langerhans cell histiocytosis (LCH), oral lesions, oral ulcers, vemurafenib

Received: 30 March 2019; revised manuscript accepted: 30 August 2019.

## Introduction

Langerhans cell histiocytosis (LCH), formerly known as histiocytosis X, can occur at any age but is typically found in children.<sup>1,2</sup> Its possible presence in any organ makes it a diagnostic chameleon as it mimics multiple diseases depending on the affected area.<sup>3</sup> According to Haupt and colleagues, the predominantly affected location is the skeleton, followed by the skin and the pituitary gland.<sup>3</sup> Less-frequently impaired sites such as the bone marrow, liver, spleen, and lungs seem to coincide with a higher risk of severe progression of the disease.<sup>4</sup> Typically, the disease causes granulomatous lesions in these organs.<sup>2,5</sup> The pathogenesis of LCH is still poorly understood. Overstimulation of monocytes/dendritic cells seems to be the key mechanism involving genetically predisposed cells.<sup>2,6–8</sup> Recent findings have led to the assumption that LCH should be considered as an inflammatory neoplastic process

comprising qualities of a tumour as well as immunogenic components, as it appears to be caused by somatic mutations in bone marrow progenitor cells.<sup>2,5,9</sup> One common characteristic is the proliferation, accumulation, and alteration of dendritic cells resembling Langerhans cells of the epidermis.<sup>1–3,10</sup> Clinically, LCH is classified as ‘single-system LCH’ (SS-LCH) or ‘multisystem LCH’ (MS-LCH). SS-LCH includes only one organ or system such as bone, skin, lymph nodes, lungs, the central nervous system, the hypothalamic–pituitary system and other locations not specifically listed. Multifocal lesions in one organ, such as multiple bone sites, are also classified as SS-LCH. MS-LCH is classified as the involvement of two or more organs independent of risk assessment or location.<sup>3,11</sup> Although involvement of the head and neck (HN) region is possible and observed in more than half of LCH cases, primary manifestations such as oral lesions seem to

*Ther Adv Med Oncol*

2019, Vol. 11: 1–12

DOI: 10.1177/  
1758835919878013

© The Author(s), 2019.  
Article reuse guidelines:  
sagepub.com/journals-  
permissions

Correspondence to:

**Norbert Neckel**  
Charité –  
Universitätsmedizin  
Berlin, Corporate Member  
of Freie Universität Berlin,  
Humboldt-Universität zu  
Berlin, and Berlin Institute  
of Health, Department  
of Oral and Maxillofacial  
Surgery, Augustenburger  
Platz 1, 13351 Berlin  
13353, Germany  
[norbert.neckel@charite.de](mailto:norbert.neckel@charite.de)

**Andrej Lissat**  
**Arendt von Stackelberg**  
Charité –  
Universitätsmedizin  
Berlin, Corporate Member  
of Freie Universität Berlin,  
Humboldt-Universität  
zu Berlin, and Berlin  
Institute of Health,  
Department of Paediatrics,  
Division of Oncology and  
Haematology, Berlin,  
Germany

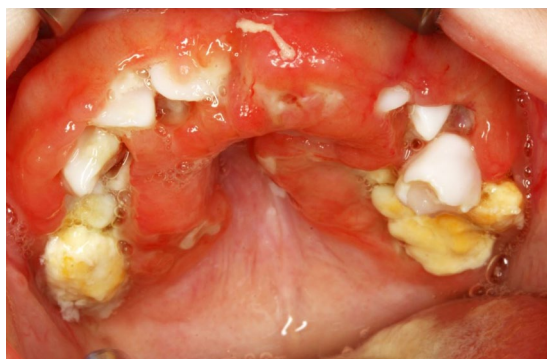
**Nadine Thieme**  
Charité –  
Universitätsmedizin  
Berlin, Corporate Member  
of Freie Universität Berlin,  
Humboldt-Universität zu  
Berlin, and Berlin Institute  
of Health, Department  
of Radiology, Berlin,  
Germany

**Mohamed-Salim Doueiri**  
Charité –  
Universitätsmedizin  
Berlin, Centre for  
Dental and Craniofacial  
Sciences, Department of  
Orthodontics, Dentofacial  
Orthopaedics and  
Paedodontics, Berlin,  
Germany

**Birgit Spors**  
Charité –  
Universitätsmedizin  
Berlin, Corporate Member  
of Freie Universität Berlin,  
Humboldt-Universität zu  
Berlin, and Berlin Institute  
of Health, Department  
of Paediatric Radiology,  
Berlin, Germany

**Benedicta Beck-  
Broichsitter**  
**Max Heiland**  
**Jan-Dirk Raguse**  
Charité –  
Universitätsmedizin  
Berlin, Corporate Member

of Freie Universität Berlin, Humboldt-Universität zu Berlin, and Berlin Institute of Health, Department of Oral and Maxillofacial Surgery, Berlin, Germany



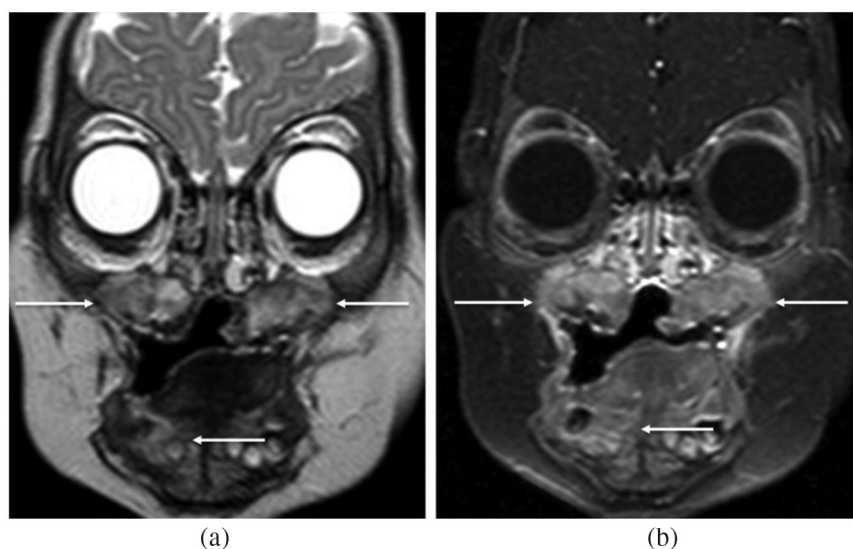
**Figure 1.** Clinical situation at first presentation at the age of 6 months, showing LCH and superinfection-affected upper jaw and prematurely erupted teeth. LCH, Langerhans cell histiocytosis.

be rare.<sup>12,13</sup> According to Lewoczko and colleagues, in this area, the skull, lymph nodes, and skin are the most frequently affected areas, followed by the orbit. Lesions in the maxilla (fewer than 6% of HN cases) and especially the mandible (about 3% of HN cases) have been rarely observed and therefore seem to account for only roughly 2–4% of all LCH cases.<sup>13,14</sup>

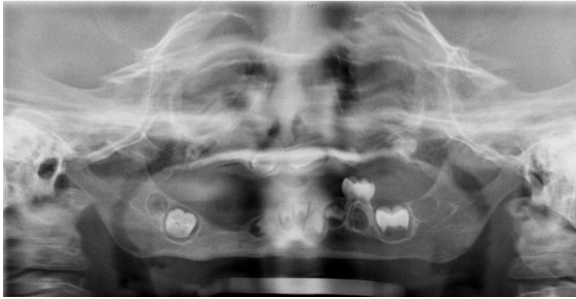
### Case presentation

A 6-month-old girl presented with gingival swelling and intraoral fibrinous coating along the alveolar crests of the maxilla (Figure 1) and mandible

as well as feeding problems (700 ml/day, maximum 140 ml per portion). White layers on the dorsum of the tongue could be observed. Apart from feeding or drinking, her general condition was not impaired. The child also demonstrated scaly light-brown macules on the torso. At 2 months before presentation in our hospital, the patient had been treated unsuccessfully for suspected thrush. Furthermore, osteomyelitis or aseptic necrosis of the jaw had been suspected. In this context, the lower first primary incisors and upper primary molars 55 and 65 as well as 61 had been removed. During hospitalization in our clinic, an HN magnetic resonance imaging (MRI) scan with a contrast agent was performed (Figure 2) under general anaesthesia and showed up to 1-cm-broad T2w hyperintense and inhomogeneously contrast-enhancing lesions in the maxilla on both sides, reaching the scarcely pneumatized sinus. Another lesion was localized in the rostral right mandible. While the patient was under general anaesthesia, biopsies were taken, and the primary prematurely erupted teeth (54, 53, 52, 51, 62, 63, and 64) had to be extracted from the loose tissue mass to prevent aspiration. These samples were sent in for histologic analysis. The immunohistochemical analysis revealed the questionable presence of the histiocytic markers, CD68 and lysozyme. In contrast, the strong presence of S100 and CD1a was found. Proliferation was elevated up to 20% (Ki67). CD1a and Langerin (CD207) confirmed the diagnosis of



**Figure 2.** Initial diagnosis of LCH via MRI: T2w TSE (a) and T1w FS after gadolinium administration (b) show manifestations in both sides of the maxilla and in the right mandible. LCH, Langerhans cell histiocytosis; MRI, magnetic resonance imaging.



**Figure 3.** Dental status after successful treatment with vemurafenib at the age of 3 years, showing only a few remaining germs in the upper and lower jaw.

LCH. Analysis also revealed a BRAF mutation in exon 15 (V600E), leading to activation of the mitogen-activated protein kinase (MAPK) pathway.<sup>5</sup> A whole-body MRI was performed after diagnostic confirmation to complete staging of the disease. Since the facial bones were involved, systemic therapy according to LCH-III references was indicated despite the disease being classified as a single-system/single-bone disease.

Systemic treatment was performed by the Department of Paediatrics, Division of Oncology and Haematology. After the implantation of a port-a-cath system for safe drug application, treatment with daily prednisolone (40 mg/m<sup>2</sup>, with dose tapering during weeks 5 and 6) and weekly vinblastine (6 mg/m<sup>2</sup> for 6 weeks) according to the LCH-III regimen was initiated.

Because of an absent treatment response, a second modified LCH-III cycle with prednisolone pulse therapy (3 days per week) was administered for another 6 weeks.

As a result of persisting active LCH in the affected gingiva, further prematurely erupted teeth had to be removed, leaving only a few remaining germs of permanent teeth (Figure 3). Since the histology showed ongoing vital LCH, treatment was intensified to the second-line regimen for nonrisk patients according to the Histiocyte Society guidelines with a combination of vincristine, prednisone, and cytarabine.<sup>11</sup> This method was poorly tolerated and had to be stopped because of a recurring fever. The treatment was changed to intensified LCH-III maintenance therapy with 3-weekly pulses of vinblastine and prednisolone supplemented by daily 6-mercaptopurine and weekly methotrexate. In the course of treatment, pulse intervals were extended to 6 weeks. In

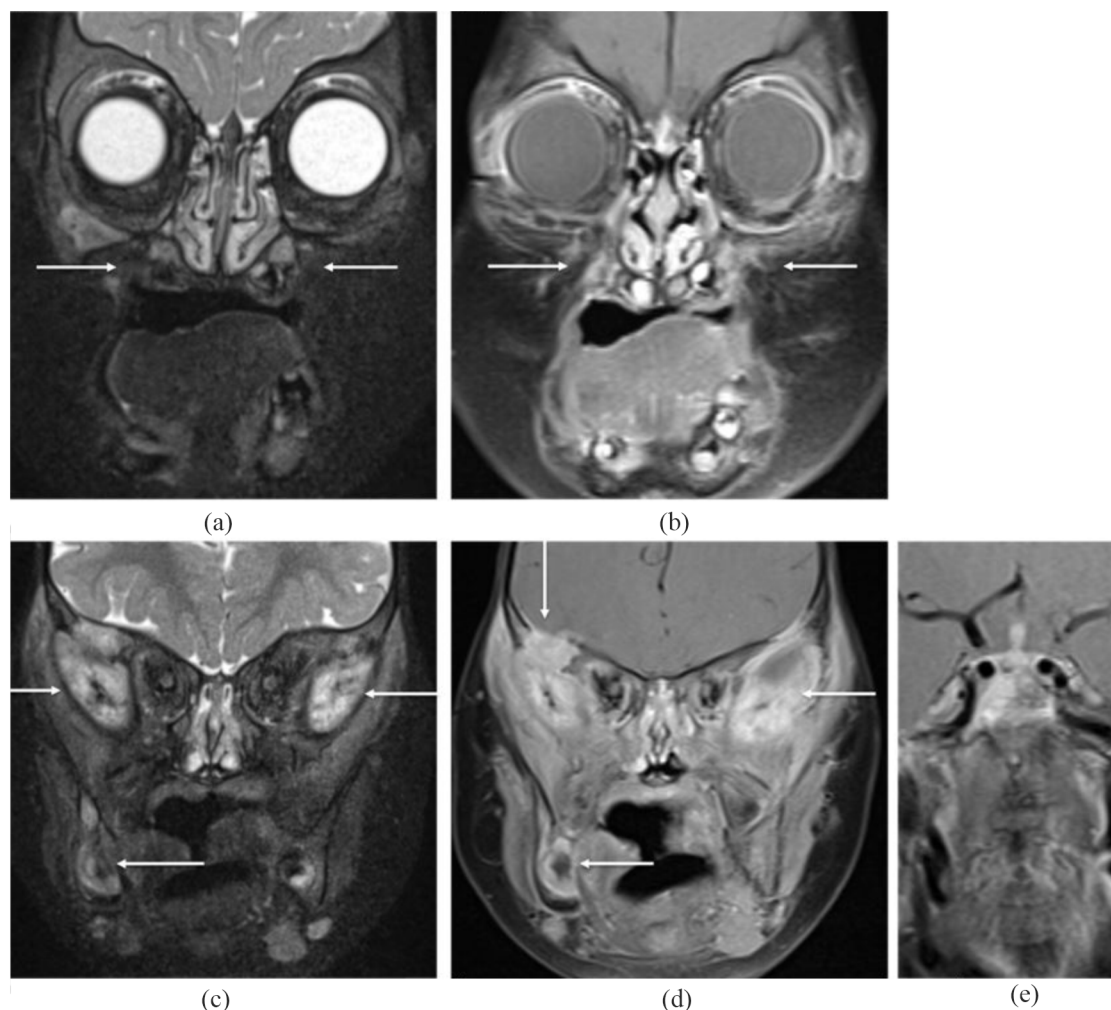
contrast with the last drug combination, this treatment was well tolerated; however, a relevant response of the tumour was not observed. C-reactive protein levels remained between 40 and 100 mg/dl as a sign of persisting LCH activity.

Owing to relevant disease progression after almost 2 years of conventional LCH-III therapy with the newly diagnosed involvement of the skull, skull base, periorbital tissue [Figures 4 and 5(a)], temporal muscles on both sides, and pituitary stalk with resulting diabetes insipidus, the treatment regime was altered to a targeted approach, with the BRAF inhibitor vemurafenib as monotherapy owing to the BRAF V600E mutation found in primary tumour samples. After informed consent from the parents was obtained, vemurafenib was given orally twice (240 mg) per day as crushed suspended tablets on off-label use. Skin irritation and itching efflorescence were observed initially as side effects. At 1 week after the initiation of vemurafenib therapy, C-reactive protein levels normalized, and the patient's general condition was excellent. Ultrasound and MRI scans in routine check-ups showed improvement of the aforementioned lesions [Figure 5(b)].

After 1 year of treatment, MRI scans showed complete remission [Figures 5(c,d) and 6], and withdrawal from treatment was attempted. Dental rehabilitation with partial- and full-interim prostheses was necessary, but problems concerning their retention remained and hampered patient compliance. Unfortunately, the control MRI after 6 months showed new lesions in the left zygoma (Figure 7) as well as suspected infiltration of the pituitary gland and stalk. Vemurafenib therapy was reinitiated. After another 3 months, the findings were stable, and contrast enhancement in the pituitary stalk had decreased. At 6 months later, a second complete remission was confirmed by MRI. The diabetes insipidus persisted and did not resolve completely. Other endocrine sequelae were not observed. The entire case is summarized in Table 1.

### Diagnosis

Definitive diagnosis requires the positive CD1a or CD207 (Langerin) staining of affected cells.<sup>3,11</sup> Histologically, LCH also shows typical patterns, but electron microscopy to reveal the presence of Birbeck granules is no longer necessary, since Langerin correlates with their existence, although

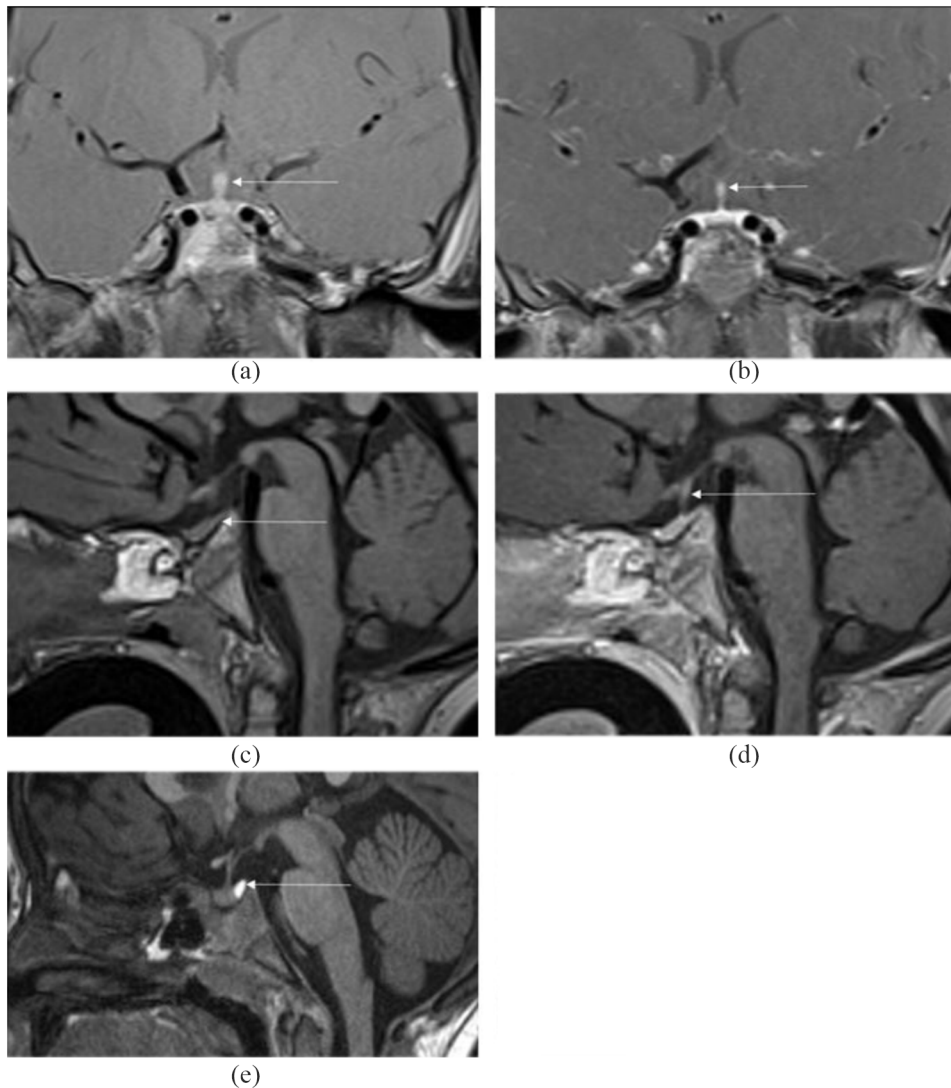


**Figure 4.** Extension of the disease in the craniofacial region after 2 years of conventional chemotherapy. Although T2w TSE FS MRI (a, c) and T1w TSE + gadolinium FS MRI (b, d, e) shows regression in the maxillary region (a, b), new manifestations are observed in the skull base, temporal region, and pituitary stalk and are still focused in the right mandible. MRI, magnetic resonance imaging.

in rare cases, both parameters can be negative.<sup>3,15</sup> Since manifestations can occur in every type of tissue, imaging has to be adjusted to the specific situation.<sup>16</sup> In the case of oral or alveolar manifestations, dental radiographs or orthopantomography may be necessary.<sup>17</sup> For three-dimensional evaluations, cone-beam computed tomography (CT) is a potential option, but is inferior in terms of soft-tissue visualization in comparison with multislice CT, and MRI must also be considered.<sup>18–21</sup> Multislice CT has the advantage of shorter scan periods and therefore fewer movement artefacts than cone-beam CT, especially in younger or noncompliant patients.<sup>22,23</sup> MRI, especially when combined with a gadolinium contrast medium, is highly sensitive and is therefore the method of choice for soft-tissue evaluation,

including perifocal oedema and invasion into neighbouring structures, including the central nervous system (CNS).<sup>16,24–26</sup> MRI can help detect multiple lesions as a non-invasive whole-body scan as well as for follow up during treatment.<sup>27,28</sup> According to Goo and colleagues, whole-body MRI is superior to plain radiography and bone scintigraphy and therefore should be considered as a valid method in evaluating bony and pulmonary lesions, especially considering radiation protection.<sup>3,28,29</sup> As alternatives in specific indications, positron emission tomography and scintigraphy can indicate altered tissue metabolism;<sup>16,24,30,31</sup> however, the optimal method of bone evaluation is still controversial and should not be changed during follow up.<sup>3,24,32,33</sup> When craniofacial bone lesions are





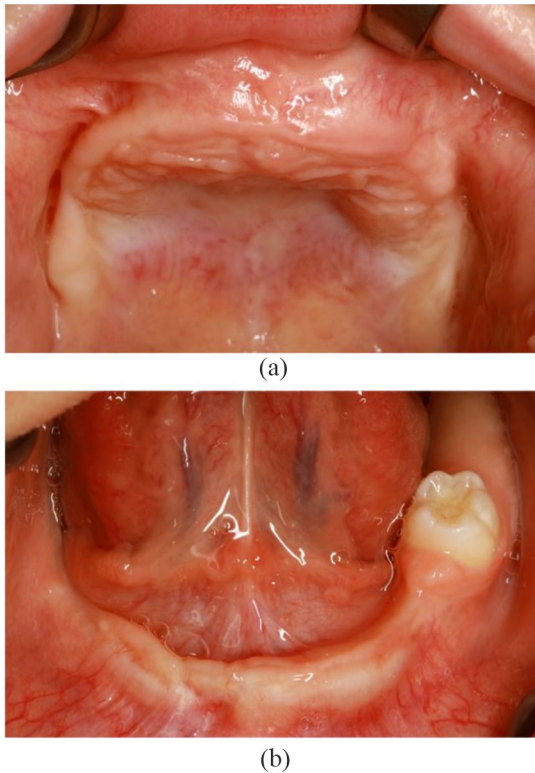
**Figure 5.** MRI scans showing pituitary involvement: (a) Coronal T1w TSE FS with contrast agent, where the arrow shows a thickened pituitary stalk; (b) Coronal T1w TSE FS with contrast agent showing normal pituitary stalk 3 months after initiation of treatment with vemurafenib; (c) T1w sagittal view after BRAF-specific therapy (without contrast agent): neurohypophysis is not delimitable after therapy (first complete remission); (d) T1w sagittal view after BRAF-specific therapy (with contrast agent): normal shape of pituitary stalk (first complete remission); (e) Normal neurohypophysis in a healthy patient: hyperintense signal in sagittal T1w without contrast agent.

MRI, magnetic resonance imaging.

suspected, an MRI scan with a gadolinium IV contrast medium should be performed, including all craniofacial bones as well as the brain and the hypothalamus–pituitary axis.<sup>11</sup>

The classification of LCH into SS-LCH and MS-LCH helps to facilitate treatment decisions. One important factor is the definition of so-called risk organs and special sites, as proposed by the Histiocyte Society; risk organs include the hematopoietic system, spleen, liver, and lungs.

Craniofacial bones, eyes, ears, oral involvement, and CNS lesions are seen as special sites.<sup>11</sup> Referring to the dento-alveolar region, differential diagnoses comprise oral infections or inflammation, such as periodontitis and periapical pathologies, and can mislead dentists and physicians towards incorrect assumptions.<sup>34–36</sup> Clinical symptoms include bleeding, bone loss with pathologic probing depths, tooth mobility, ulcers, red and white lesions, osteolytic lesions, demineralization of tooth substance and structure, and glandular



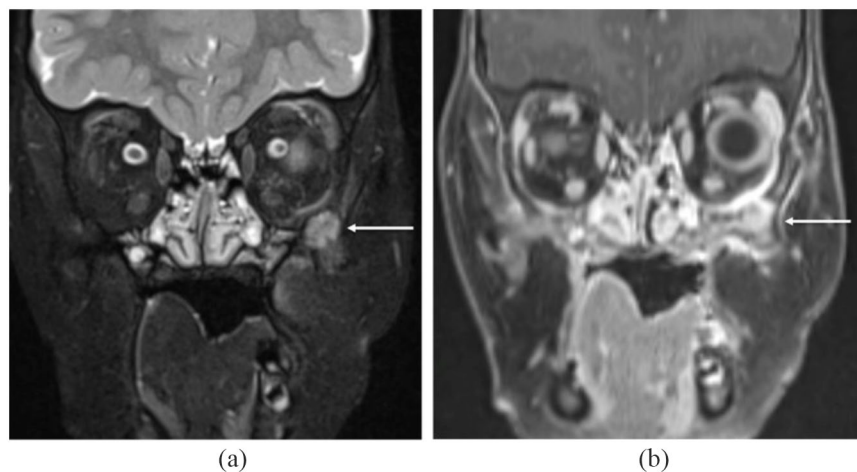
**Figure 6.** Clinical situation after the first complete remission at the age of 4 years: upper jaw (a) and lower jaw (b).

involvement.<sup>17</sup> Apart from the typical dental manifestations, this leaves basically every hard- and soft-tissue pathology of the HN area as potential differential diagnoses. Skin alterations and symptoms include pruritus, vesicles, bullae,

nodules dermatitis, and petechiae.<sup>3</sup> In the oral mucosa, lesions can present as ulcers and are possible clinical expressions of underlying bone involvement.<sup>37</sup> Bone lesions can also be confused with bone cysts, sarcoma, myeloma, osteomyelitis, leukaemia, lymphoma, fibrous dysplasia, bone angiomatosis, and infectious alterations.<sup>3,38,39</sup> Lymphadenopathy and its various origins must be considered as frequent manifestations in the HN area as well.<sup>13,40</sup>

### Therapy

Therapeutic strategies are based on individual staging and classification of the disease. Treatment guidelines for good practice were released in 2008 by the Histiocyte Society after evaluation in LCH-III multicentre studies.<sup>3,11</sup> The recent LCH-IV study is set to run until 2025.<sup>41</sup> Craniofacial lesions, including the eyes, ears, and oral cavity, especially bear an increased risk of diabetes insipidus and therefore justify systemic therapy.<sup>11,42</sup> Small and noncraniofacial bone lesions can be treated *via* local excision and curettage as well as local cortisone application.<sup>3,43,44</sup> Surgical excision can also be an option for strictly limited skin lesions and the rare case of SS-LCH of the lymph nodes.<sup>3,45</sup> Systemic therapy is indicated for SS-LCH with ‘CNS-risk’ lesions, multifocal bone lesions, or ‘special site’ lesions.<sup>11</sup> MS-LCH must be treated systemically, independent of risk-organ involvement.<sup>11</sup> The Histiocyte Society suggests initial treatment with vinblastine and prednisolone for 6 weeks, as administered in our case. In patients that do not respond to treatment but do



**Figure 7.** T2w TSE FS (a) and T1w TSE + gadolinium FS (b) MRIs show a new lesion 6 months after the cessation of treatment in the left zygoma. MRI, magnetic resonance imaging.

**Table 1.** Case synopsis and temporal sequence.

Age	Clinical presentation and treatment response	Diagnostic tools
4 months	Unsuccessful treatment of suspected thrush and osteomyelitis in another institution	
6 months	Feeding problems (700 ml/day, maximum 140 ml per portion), gingival swelling, intraoral fibrinous coating along the alveolar crests of the maxilla (Figure 1) and white layers on the dorsum of the tongue, scaly light-brown macules on the torso Removal of prematurely erupted primary teeth to prevent aspiration	MRI scan with contrast agent (Figure 2), diagnostic confirmation via immunohistochemical analysis: detection of S100, CD1a and Langerin (CD207), proliferation 20% (Ki67), BRAF mutation in exon 15 (V600E), completion of LCH staging via whole-body MRI
<b>LCH-III 1st induction therapy</b>		
Prednisolone (40 mg/m <sup>2</sup> , with dose tapering during weeks 5 and 6) and weekly vinblastine (6 mg/m <sup>2</sup> for 6 weeks)		
9 months	Missing treatment response	MRI follow up
<b>LCH-III 2nd induction therapy</b>		
Including prednisolone pulse therapy (3 days per week)		
11 months	Persisting therapy refractory but stable disease Further removal of primary teeth from tumour mass	Re-biopsy with ongoing vital LCH
<b>Second-line regimen</b>		
for nonrisk patients according to the Histiocyte Society guidelines with a combination of vincristine, prednisone, and cytarabine		
16 months	Change of treatment due to recurring fever under therapy	
<b>Intensified LCH-III maintenance therapy with 6-mercaptopurine and methotrexate</b>		
as permanent medication and pulse treatment with vinblastine and prednisolone for 2 years		
3 years	Disease progression with newly diagnosed involvement of the skull, base of the skull, periorbital tissue, temporal muscles on both sides as well as pituitary stalk affection with consecutive diabetes insipidus	MRI follow up [Figures 3, 4 and 5(a)]
<b>BRAF inhibitor vemurafenib as monotherapy</b>		
(2 × 240 mg orally per day as suspension in off-label use)		
4 years	Complete remission under therapy with vemurafenib	MRI follow up [Figures 5(b–d) and 6]
<b>Cessation of BRAF-specific treatment</b>		
5 years	New lesions in the left zygoma	MRI follow up (Figure 7)
<b>Re-initiation of vemurafenib therapy</b>		
5 years	Second complete remission	
LCH, Langerhans cell histiocytosis; MRI, magnetic resonance imaging		

not experience risk-organ involvement, a second term of 6 weeks of prednisolone in combination with vinblastine is recommended and has been administered in our patient.<sup>11</sup> Unfortunately, salvage therapy was necessary as treatment failure was observed. At present, no official guidelines for

second-line therapy for nonrisk patients exist. Therefore, the scheme of the LCH Register 2013 Stratum II SL-IT with vincristine, cytarabine pulses, and prednisone was chosen.<sup>46</sup> This combination, together with cladribine, is clinically documented and mentioned in the literature as a

treatment alternative.<sup>3,11,47</sup> This approach had to be dismissed because of poor tolerance to treatment and severe side effects. On the grounds of these effects, treatment was changed to an LCH-III maintenance regime with 6-mercaptopurine and methotrexate as permanent medications and pulse treatment with vinblastine and prednisolone.<sup>3,11</sup>

With the lack of conventional treatment options as well as severe disease progression in the course of this treatment, alternative options had to be found. Possible targets in tumour therapy are BRAF alterations, such as BRAF V600E.<sup>1,48,49</sup> As an essential part of the MAPK pathway of receptor tyrosine kinases, it is responsible for the transmission of extracellular proliferative signals to the nucleus.<sup>50</sup> This mutation can be classified together with BRAF V600D/K/R as a class I BRAF mutation, the most commonly identified in human tumours.<sup>50,51</sup> BRAF V600E does not rely on dimerization and therefore shows increased kinase activity, leading to RAS (rat sarcoma)-independent signalling.<sup>50,52,53</sup> Reproducible evidence shows that targeted BRAF V600E therapy with vemurafenib is effective on Erdheim–Chester disease (ECD) without the development of relevant resistance for up to 16 months.<sup>54</sup> Based on molecular features, including alterations in BRAF V600E and clinical appearance, ECD was classified by the World Health Organization in 2016, together with LCH, as histiocytic and dendritic cell neoplasms.<sup>55</sup> This justifies the assumption of a close relationship between the two diseases. In our patient, the treatment regime had to be changed because salvage chemotherapy failed, so we decided to administer targeted therapy against the BRAF V600E-mutated protein. Recent data show good and prolonged efficiency of targeted BRAF therapy with vemurafenib in LCH and ECD, which led the authors to conclude that the agent can be used as a standard of care for V600E mutant manifestations of these diseases.<sup>56</sup> Given the absence of data on the treatment of children with vemurafenib, the dosage and form of application was chosen as described by Heretier and colleagues, following recommendations and serum levels for the treatment of malignant melanoma.<sup>57,58</sup>

#### *Dental rehabilitation*

In this case, our patient suffered severe multiple tooth loss of both primary teeth and the germs of permanent teeth. This led to functional and aesthetic insufficiencies that may result in

underdevelopment of the jaws, malocclusion, and nutritional and social problems, affecting proper articulation and speaking. Thus, the lack of teeth itself, apart from other LCH-related comorbidities, can negatively impact the patient's quality of life.<sup>59,60</sup> Therapy in those cases generally consists of paedodontic prostheses, which can also function as an orthodontic apparatus for the proper development of the jaws.<sup>61–63</sup> For adults, dental implants are a valuable alternative.<sup>64</sup> Nevertheless, facial growth and the eruption of secondary teeth have to be taken into account considering the ankylosis of dental implants, which leads to a lack of alveolar growth with consecutive infra-occlusion and interference with the eruption of adjacent teeth.<sup>65–68</sup> Therefore, evaluating the best time for implantation, if needed, is crucial. According to the German Association of Oral Implantology, dental implants in patients under 12 years of age should be an exception in special cases and respect typical growth patterns.<sup>69</sup> Definitive restoration is not recommended until growth is completed, which may, given structural changes within the jaw, not be the case until the third decade of life.<sup>69</sup> Growth patterns in the maxilla and mandible also vary depending on the existence of teeth influencing alveolar growth.<sup>70</sup> Reports in the literature suggest the possibility of early implantation in younger children with extreme hypodontia because of syndromes such as ectodermal dysplasia.<sup>65,70</sup> Compared with the maxilla, with a high risk of implant failure, the growth pattern in the edentulous mandibula seems to allow for earlier implantation in the anterior region of the mandible.<sup>65,70–73</sup> In contrast with this situation, the panoramic radiography of our patient showed four remaining germs in the lower jaw. Because of the high risk of tooth loss or implant failure when placed in the vicinity of premature teeth or germs, a conservative procedure with interim prostheses was chosen. Given insufficient retention in the toothless upper jaw, a temporary palatal implant is planned and would serve as anchor for the currently necessary full denture.

Nevertheless, the risk of LCH recurrence is apparent. In any case, close multidisciplinary treatment by an oncologist, orthodontists, and oral and maxillofacial surgeons is essential for treatment success. If facial asymmetry following growth inhibition occurs, orthodontic surgery might be necessary.<sup>15</sup> In every case of oral LCH, treatment should be based on interdisciplinary collaboration, risk evaluation, and frequent



recalls.<sup>74</sup> Given that the assessment of LCH recurrence can be hampered by chronic or acute inflammation of oral tissues, proper hygiene is indispensable.<sup>73,74</sup>

### Conclusion

LCH is a challenge both diagnostically and therapeutically. A histological examination of the involved tissue and genetic testing for BRAF V600E mutations are obligatory for the diagnosis and selection of treatment. Although compared with most differential diagnoses, LCH is a rare disease, physicians, surgeons, and dentists should keep it in mind, particularly when observing symptoms refractory to initial therapy according to the working hypothesis. Therapy should be evaluated in an interdisciplinary approach and, especially in advanced stages, be provided in specialized centres.<sup>3</sup> Targeted therapy with BRAF inhibitors has been shown to be effective in individual patients and is being investigated in prospective clinical trials.<sup>75,76</sup> A BRAF-specific approach must be considered when conventional LCH therapy fails. Following successful treatment, dental rehabilitation should be accomplished to improve the quality of life of the patient. This requires a multidisciplinary approach as well as a close follow up and consequent re-biopsy of suspicious lesions.

### Acknowledgements

We acknowledge support from the German Research Foundation and the Open Access Publication Funds of Charité, Universitätsmedizin Berlin.

### Funding

The authors received no financial support for the research, authorship, and/or publication of this article.

### Conflict of interest statement

The authors declare that there is no conflict of interest.

### Informed consent

Written parental consent for publication was obtained before submission of this article.

### ORCID iD

Norbert Neckel  <https://orcid.org/0000-0002-5477-623X>

### References

1. Lee LH, Gasilina A, Roychoudhury J, *et al.* Real-time genomic profiling of histiocytoses identifies early-kinase domain BRAF alterations while improving treatment outcomes. *JCI Insight* 2017; 2: e89473.
2. Delprat C and Arico M. Blood spotlight on Langerhans cell histiocytosis. *Blood* 2014; 124: 867–872.
3. Haupt R, Minkov M, Astigarraga I, *et al.* Langerhans cell histiocytosis (LCH): guidelines for diagnosis, clinical work-up, and treatment for patients till the age of 18 years. *Pediatr Blood Cancer* 2013; 60: 175–184.
4. Tran G, Huynh TN and Paller AS. Langerhans cell histiocytosis: a neoplastic disorder driven by Ras-ERK pathway mutations. *J Am Acad Dermatol* 2018; 78: 579–590.
5. Berres ML, Merad M and Allen CE. Progress in understanding the pathogenesis of Langerhans cell histiocytosis: back to Histiocytosis X? *Br J Haematol* 2015; 169: 3–13.
6. Arico M, Nichols K, Whitlock JA, *et al.* Familial clustering of Langerhans cell histiocytosis. *Br J Haematol* 1999; 107: 883–888.
7. De Filippi P, Badulli C, Cuccia M, *et al.* Specific polymorphisms of cytokine genes are associated with different risks to develop single-system or multi-system childhood Langerhans cell histiocytosis. *Br J Haematol* 2006; 132: 784–787.
8. Arico M. Langerhans cell histiocytosis: too many cytokines, not enough gene regulation? *Pediatr Blood Cancer* 2006; 47: 118–119.
9. Berres ML, Allen CE and Merad M. Pathological consequence of misguided dendritic cell differentiation in histiocytic diseases. *Adv Immunol* 2013; 120: 127–161.
10. Vaiselbuh SR, Bryceson YT, Allen CE, *et al.* Updates on histiocytic disorders. *Pediatr Blood Cancer* 2014; 61: 1329–1335.
11. Histiocyte Society. *Standard of Care LCH Treatment Guidelines*, <https://histiocytesociety.org/document.doc?id=290> (2009, accessed 30 March 2019).
12. Nicollas R, Rome A, Belaich H, *et al.* Head and neck manifestation and prognosis of Langerhans' cell histiocytosis in children. *Int J Pediatr Otorhi* 2010; 74: 669–673.
13. Lewoczko KB, Rohman GT, LeSueur JR, *et al.* Head and neck manifestations of Langerhans' cell histiocytosis in children: a 46-year experience. *Int J Pediatr Otorhi* 2014; 78: 1874–1876.

14. Martini A, Aimoni C, Trevisani M, *et al.* Langerhans' cell histiocytosis: report of a case with temporal localization. *Int J Pediatr Otorhi* 2000; 55: 51–56.
15. Windebank K and Nanduri V. Langerhans cell histiocytosis. *Arch Dis Child* 2009; 94: 904–908.
16. Azouz EM, Saigal G, Rodriguez MM, *et al.* Langerhans' cell histiocytosis: pathology, imaging and treatment of skeletal involvement. *Pediatr Radiol* 2005; 35: 103–115.
17. Madrigal-Martinez-Pereda C, Guerrero-Rodriguez V, Guisado-Moya B, *et al.* Langerhans cell histiocytosis: literature review and descriptive analysis of oral manifestations. *Med Oral Patol Oral* 2009; 14: E222–E228.
18. Loubele M, Guerrero ME, Jacobs R, *et al.* A comparison of jaw dimensional and quality assessments of bone characteristics with cone-beam CT, spiral tomography, and multi-slice spiral CT. *Int J Oral Max Impl* 2007; 22: 446–454.
19. Linz C, Muller-Richter UD, Buck AK, *et al.* Performance of cone beam computed tomography in comparison to conventional imaging techniques for the detection of bone invasion in oral cancer. *Int J Oral Max Surg* 2015; 44: 8–15.
20. Wanner L Kurzvorstellung der S2k-Leitlinie: Dentale digitale Volumentomographie. *ZWR – Das Deutsche Zahnärzteblatt* 2014; 123: 284–286.
21. Dammann F, Grees H, Kösling S, *et al.* Algorithmen für die Durchführung radiologischer Untersuchungen der Kopf-Hals-Region. *Arbeitsgemeinschaft der Wissenschaftlichen Medizinischen Fachgesellschaften* 2015; 39: 093.
22. Spin-Neto R and Wenzel A. Patient movement and motion artefacts in cone beam computed tomography of the dentomaxillofacial region: a systematic literature review. *Oral Surg Oral Med Oral Pathol Oral Radiol* 2016; 121: 425–433.
23. Widmann G, Fischer B, Berggren JP, *et al.* Cone beam computed tomography vs multislice computed tomography in computer-aided design/computer-assisted manufacture guided implant surgery based on three-dimensional optical scanning and stereolithographic guides: does image modality matter? *Int J Oral Max Impl* 2016; 31: 527–533.
24. Samet J, Weinstein J and Fayad LM. MRI and clinical features of Langerhans cell histiocytosis (LCH) in the pelvis and extremities: can LCH really look like anything? *Skeletal Radiol* 2016; 45: 607–613.
25. Hall MB, Guimaraes CV and Nardone HC. Facial mass in an infant: Langerhans cell histiocytosis (LCH). *JAMA Otolaryngol Head Neck* 2014; 140: 475–476.
26. Woertler K. Benign bone tumors and tumor-like lesions: value of cross-sectional imaging. *Eur Radiol* 2003; 13: 1820–1835.
27. Imashuku S, Fujita N, Shioda Y, *et al.* Follow-up of pediatric patients treated by IVIG for Langerhans cell histiocytosis (LCH)-related neurodegenerative CNS disease. *Int J Hematol* 2015; 101: 191–197.
28. Hashmi MA, Haque N, Chatterjee A, *et al.* Langerhans cell histiocytosis of long bones: MR imaging and complete follow up study. *J Cancer Res Ther* 2012; 8: 286–288.
29. Goo HW, Yang DH, Ra YS, *et al.* Whole-body MRI of Langerhans cell histiocytosis: comparison with radiography and bone scintigraphy. *Pediatr Radiol* 2006; 36: 1019–1031.
30. Koc ZP, Simsek S, Akarsu S, *et al.* Insufficiency of bone scintigraphy in vertebral lesions of Langerhans cell histiocytosis compared to F-18 fluorodeoxyglucose positron emission tomography/computed tomography and diagnostic computed tomography. *Mol Imaging Radionucl Ther* 2015; 24: 21–24.
31. Zhou W, Wu H, Han Y, *et al.* Preliminary study on the evaluation of Langerhans cell histiocytosis using F-18-fluoro-deoxy-glucose PET/CT. *Chin Med J* 2014; 127: 2458–2462.
32. Albano D, Bosio G, Giubbini R, *et al.* Role of (18)F-FDG PET/CT in patients affected by Langerhans cell histiocytosis. *Jpn J Radiol* 2017; 35: 574–583.
33. Phillips M, Allen C, Gerson P, *et al.* Comparison of FDG-PET scans to conventional radiography and bone scans in management of Langerhans cell histiocytosis. *Pediatr Blood Cancer* 2009; 52: 97–101.
34. Bansal M, Srivastava VK, Bansal R, *et al.* Severe periodontal disease manifested in chronic disseminated type of Langerhans cell histiocytosis in a 3-year old child. *Int J Clin Pediatr Dent* 2014; 7: 217–219.
35. Divya KS. Oral manifestation of Langerhans cell histiocytosis mimicking inflammation. *Indian J Dent Res* 2014; 25: 228–230.
36. Peters SM, Pastagia J, Yoon AJ, *et al.* Langerhans cell histiocytosis mimicking periapical pathology in a 39-year-old man. *J Endod* 2017; 43: 1909–1914.
37. Kilic E, Er N, Mavili E, *et al.* Oral mucosal involvement in Langerhans' cell histiocytosis:

- long-term follow-up of a rare case. *Aust Dent J* 2011; 56: 433–436.
38. Gicchino MF, Diplomatico M, Granato C, *et al.* Chronic recurrent multifocal osteomyelitis: a case report. *Ital J Pediatr* 2018; 44: 26.
  39. Shi S, Liu Y, Fu T, *et al.* Multifocal Langerhans cell histiocytosis in an adult with a pathological fracture of the mandible and spontaneous malunion: a case report. *Oncol Lett* 2014; 8: 1075–1079.
  40. Zuendel MT, Bowers DF and Kramer RN. Recurrent histiocytosis X with mandibular lesions. *Oral Surg Oral Med Oral Pathol Oral Radiol* 1984; 58: 420–423.
  41. Histiocyte Society. <https://histiocytesoc.thankyou4caring.org/pages/2011-hs---lch-iv> (accessed 19 September 2019).
  42. Grois N, Potschger U, Prosch H, *et al.* Risk factors for diabetes insipidus in Langerhans cell histiocytosis. *Pediatr Blood Cancer* 2006; 46: 228–233.
  43. Egeler RM, Thompson RC Jr, Voute PA, *et al.* Intralesional infiltration of corticosteroids in localized Langerhans' cell histiocytosis. *J Pediatr Orthop* 1992; 12: 811–814.
  44. Berry DH, Gresik M, Maybee D, *et al.* Histiocytosis X in bone only. *Med Pediatr Oncol* 1990; 18: 292–294.
  45. Weitzman S and Egeler RM. *Histiocytic disorders of children and adults: basic science, clinical features and therapy*. Cambridge: Cambridge University Press, 2005.
  46. Lehmbecher T. LCH-REG-DE 2013, Deutsches Register für Langerhanszell Histiocytosen im Kindes- und Jugendalter. (German, Swiss, Austrian) Society of Paediatric Oncology and Haematology (GPOH).
  47. Egeler RM, de Kraker J and Voute PA. Cytosine-arabioside, vincristine, and prednisolone in the treatment of children with disseminated Langerhans cell histiocytosis with organ dysfunction: experience at a single institution. *Med Pediatr Oncol* 1993; 21: 265–270.
  48. Chakraborty R, Hampton OA, Shen X, *et al.* Mutually exclusive recurrent somatic mutations in MAP2K1 and BRAF support a central role for ERK activation in LCH pathogenesis. *Blood* 2014; 124: 3007–3015.
  49. Varadi Z, Banusz R, Csomor J, *et al.* Effective BRAF inhibitor vemurafenib therapy in a 2-year-old patient with sequentially diagnosed Langerhans cell histiocytosis and Erdheim–Chester disease. *OncoTargets Ther* 2017; 10: 521–526.
  50. Dankner M, Rose AAN, Rajkumar S, *et al.* Classifying BRAF alterations in cancer: new rational therapeutic strategies for actionable mutations. *Oncogene* 2018; 37: 3183–3199.
  51. Yao Z, Torres NM, Tao A, *et al.* BRAF mutants evade ERK-dependent feedback by different mechanisms that determine their sensitivity to pharmacologic inhibition. *Cancer Cell* 2015; 28: 370–383.
  52. Poulidakos PI, Persaud Y, Janakiraman M, *et al.* RAF inhibitor resistance is mediated by dimerization of aberrantly spliced BRAF(V600E). *Nature* 2011; 480: 387–390.
  53. Weinberg RA. *The biology of cancer*. New York: Garland Science, 2014.
  54. Haroche J, Cohen-Aubart F, Emile JF, *et al.* Reproducible and sustained efficacy of targeted therapy with vemurafenib in patients with BRAF(V600E)-mutated Erdheim–Chester disease. *J Clin Oncol* 2015; 33: 411–418.
  55. Emile JF, Abla O, Fraitag S, *et al.* Revised classification of histiocytoses and neoplasms of the macrophage-dendritic cell lineages. *Blood* 2016; 127: 2672–2681.
  56. Diamond EL, Subbiah V, Lockhart AC, *et al.* Vemurafenib for BRAF V600-mutant Erdheim–Chester disease and Langerhans cell histiocytosis: analysis of data from the histology-independent, phase 2, open-label VE-BASKET study. *JAMA Oncol* 2018; 4: 384–388.
  57. Larkin J, Del Vecchio M, Ascierto PA, *et al.* Vemurafenib in patients with BRAF(V600) mutated metastatic melanoma: an open-label, multicentre, safety study. *Lancet Oncol* 2014; 15: 436–444.
  58. Heritier S, Jehanne M, Leverger G, *et al.* Vemurafenib use in an infant for high-risk Langerhans cell histiocytosis. *JAMA Oncol* 2015; 1: 836–838.
  59. Borges TS, Vargas-Ferreira F, Kramer PF, *et al.* Impact of traumatic dental injuries on oral health-related quality of life of preschool children: a systematic review and meta-analysis. *PLoS ONE* 2017; 12: e0172235.
  60. Kragt L, Dharmo B, Wolvius EB, *et al.* The impact of malocclusions on oral health-related quality of life in children: a systematic review and meta-analysis. *Clin Oral Investig* 2016; 20: 1881–1894.
  61. Meller C. Orale Rehabilitation eines Kindes mit einer Oberkieferprothese. *Oralprophylaxe Kinderzahnheilk* 2006; 28: 40–44.

62. Eismann D. Vorbeugende Bekämpfung der Gebissanomalien. *Kinderzahnheilkunde*, Heidelberg: Verlag Hüthig, 1985.
63. Hupfauf L. Abnehmbare Prothesen im kindlichen Gebiss. *Dtsch Zahnärztl* 1968; 1314–1321.
64. Guillaume B. Dental implants: a review. *Morphologie* 2016; 100: 189–198.
65. Mankani N, Chowdhary R, Patil BA, *et al.* Osseointegrated dental implants in growing children: a literature review. *J Oral Implantol* 2014; 40: 627–631.
66. Heij DGO, Opdebeeck H, Steenberghe D, *et al.* Age as compromising factor for implant insertion. *Periodontology* 2000 2003; 33: 172–184.
67. Oesterle LJ, Cronin RJ Jr and Ranly DM. Maxillary implants and the growing patient. *Int J Oral Max Impl* 1993; 8: 377–387.
68. Brugnolo E, Mazzocco C, Cordioli G, *et al.* Clinical and radiographic findings following placement of single-tooth implants in young patients: case reports. *Int J Periodontics Restorative Dent* 1996; 16: 421–433.
69. Terheyden H, Tetsch J, Kopp I, *et al.* Zahnimplantatversorgung bei multiplen Zahnnichtanlagen und Syndromen. S3-Leitlinie (Langversion). AWMF-Registernummer: 083-024; (Treatment guidelines by the German society for Implantology and German Society of Dentistry and Oral Medicine).
70. Agarwal N, Kumar D, Anand A, *et al.* Dental implants in children: a multidisciplinary perspective for long-term success. *Natl J Maxillofac Surg* 2016; 7: 122–126.
71. Guckes AD, McCarthy GR and Brahim J. Use of endosseous implants in a 3-year-old child with ectodermal dysplasia: case report and 5-year follow-up. *Pediatr Dent* 1997; 19: 282–285.
72. Johnson EL, Roberts MW, Guckes AD, *et al.* Analysis of craniofacial development in children with hypohidrotic ectodermal dysplasia. *Am J Med Genet* 2002; 112: 327–334.
73. Montanari M, Battelli F, Callea M, *et al.* Oral rehabilitation with implant-supported overdenture in a child with hypohidrotic ectodermal dysplasia. *Ann Oral Maxillofac Surg* 2013; 1(3): 26. 2013.
74. Papavasiliou G, Kamposiora P, Sklavounou A, *et al.* Prosthodontic treatment of a class IV ACP PDI patient, with Langerhans cell histiocytosis (LCH). *J Prosthodont* 2011; 20 Suppl 2: S14–19.
75. US National Library of Medicine. *Phase I/IIa, 2-part, multi-center, single-arm, open-label study to determine the safety, tolerability and pharmacokinetics of oral dabrafenib in children and adolescent subjects with advanced BRAF V600-mutation positive solid tumors*, <https://clinicaltrials.gov/ct2/show/NCT01677741> (2012, accessed 30 March 2019).
76. US National Library of Medicine. *The prospective non-randomized phase II clinical trial of vemurafenib in combination with cytarabine and 2-chlorodeoxyadenosine in children with Langerhans-cell histiocytosis with BRAF V600E mutation*, <https://clinicaltrials.gov/ct2/show/NCT03585686> (2018, accessed 30 March 2019).