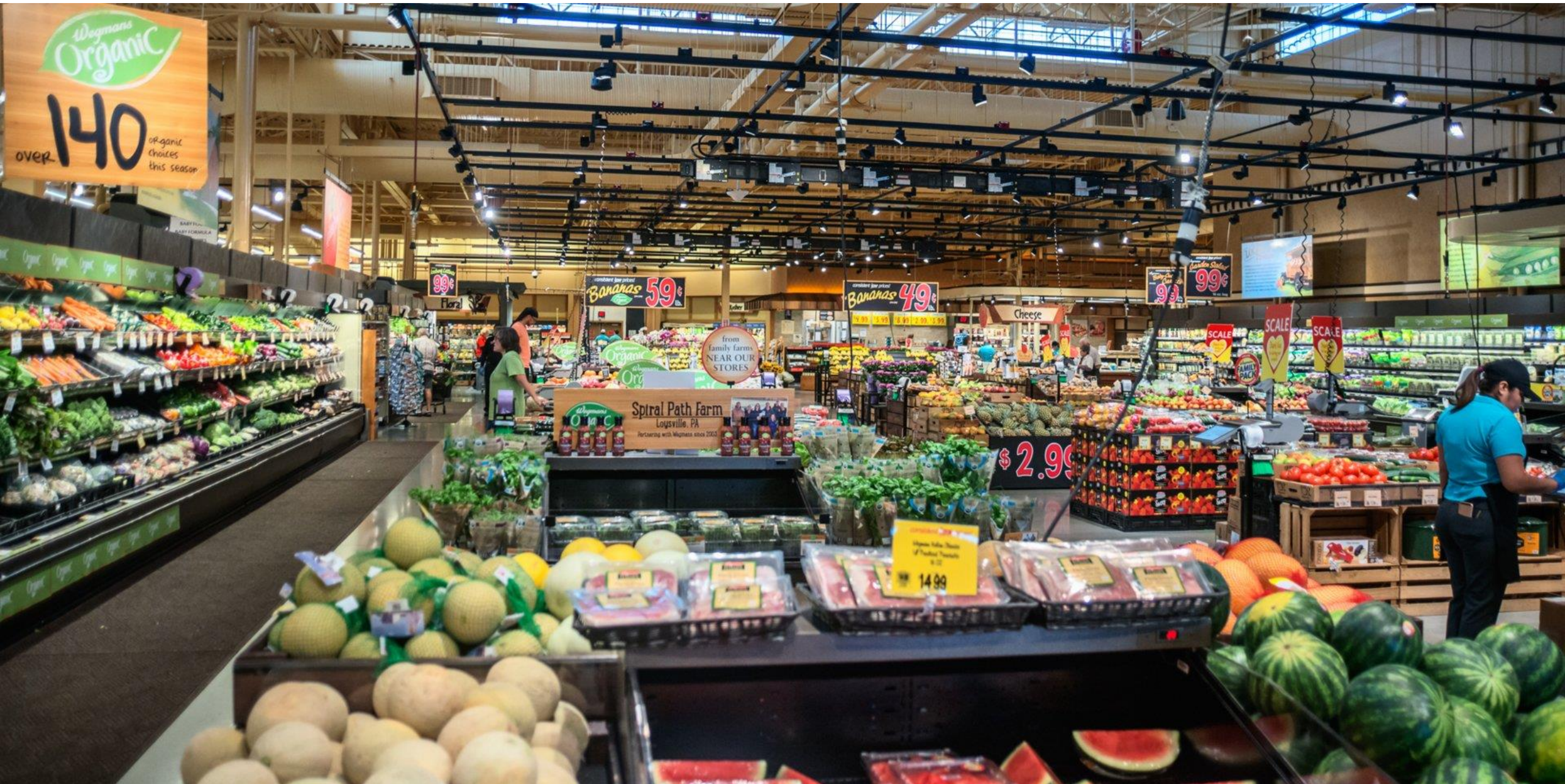




## Peri-Urban Agriculture: Opportunities for Sustainable and Climate Friendly Livestock

Polly Ericksen  
*ILRI*

ILRI Institute Planning Meeting, Addis Ababa, 17-19 September 2019



Wegmans Organic  
over 140 organic choices this season

comparable low priced  
Bananas 59¢

comparable low priced  
Bananas 49¢

comparable low priced  
Lamb Chops 99¢

from family farms  
NEAR OUR STORES

Wegmans Organic  
Spiral Path Farm  
Loyville, PA  
Partnering with Wegmans since 2003

\$2.99

14.99

SCALE

SCALE

FAMILY PACK



## CITIES GET THE JOB DONE



### THE 2019 C40 WORLD MAYORS SUMMIT IN COPENHAGEN

The C40 World Mayors Summit taking place in



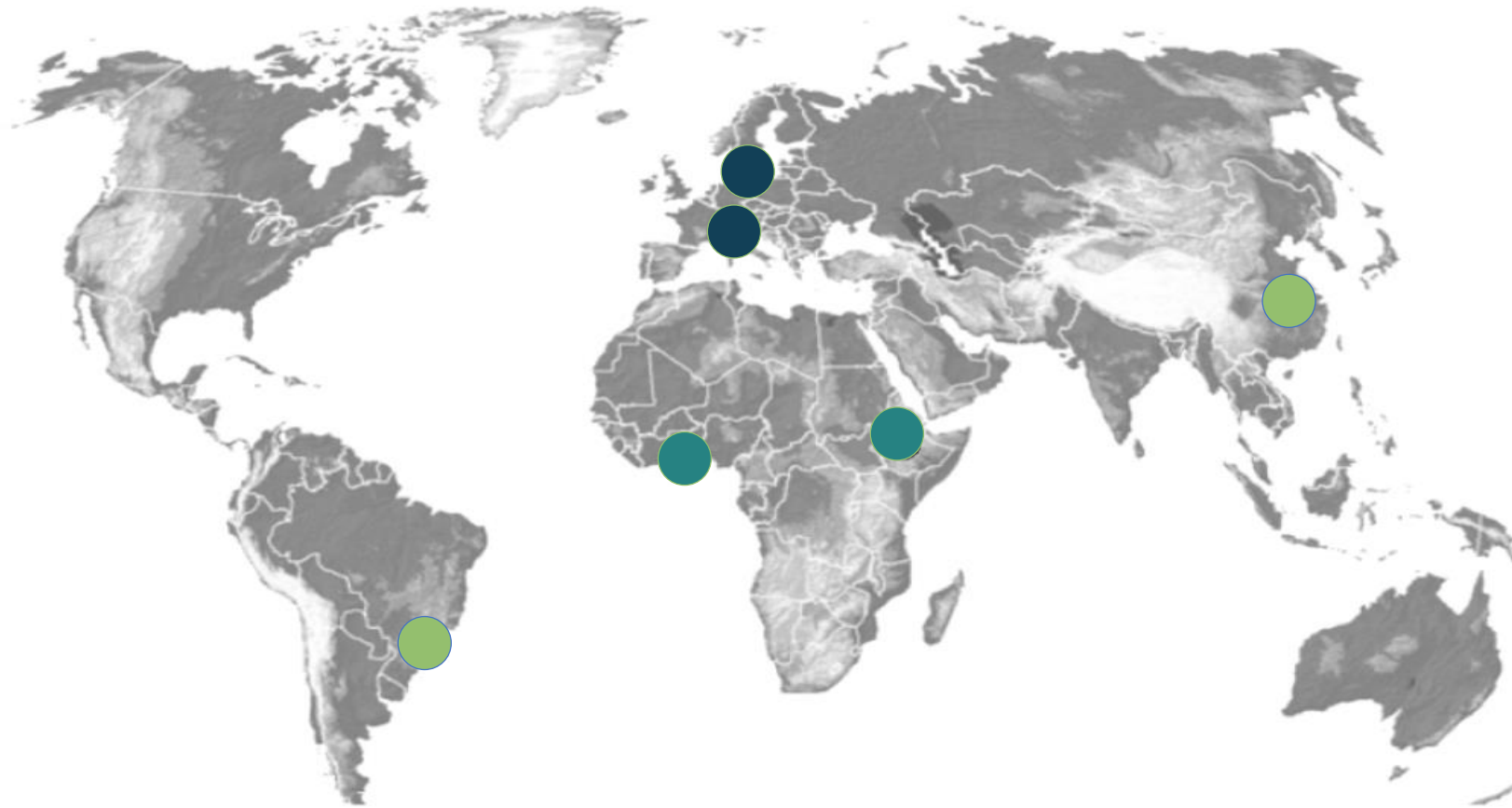
### DEADLINE 2020

Deadline 2020 is a commitment from the world's

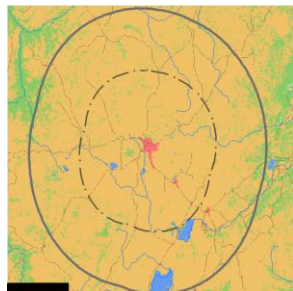


### CONGRATULATIONS TO THE FIRST 15 WINNERS OF C40'S REINVENTING CITIES COMPETITION!

These innovative and realizable climate solutions



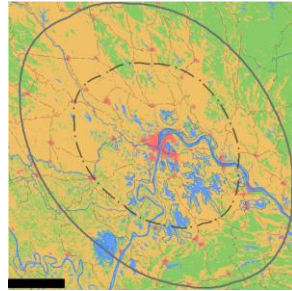
**Addis Abba**  
Ethiopia



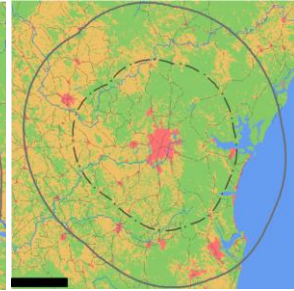
**Accra**  
Ghana



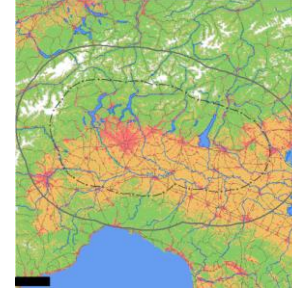
**Wuhan**  
China



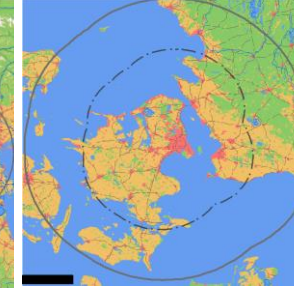
**Curitiba**  
Brazil



**Milan**  
Italy



**Copenhagen**  
Denmark



# Curitiba Mais Nutrição



CURITIBA

C4O  
CITIES  
CLIMATE LEADERSHIP GROUP

- To promote **healthy eating habits**;
- To facilitate **access to quality food**, mainly to most vulnerable social classes;
- To use food consumption as a driver of **regional sustainable development**;
- To implement the **Municipal Food Security Policy**.





# Removing beef and lamb from menu dramatically reduces food-related carbon emissions at Cambridge University



Media enquiries

---

[Craig Brierley](#)

[Communications team](#)

Published

---

10 Sep 2019

Image

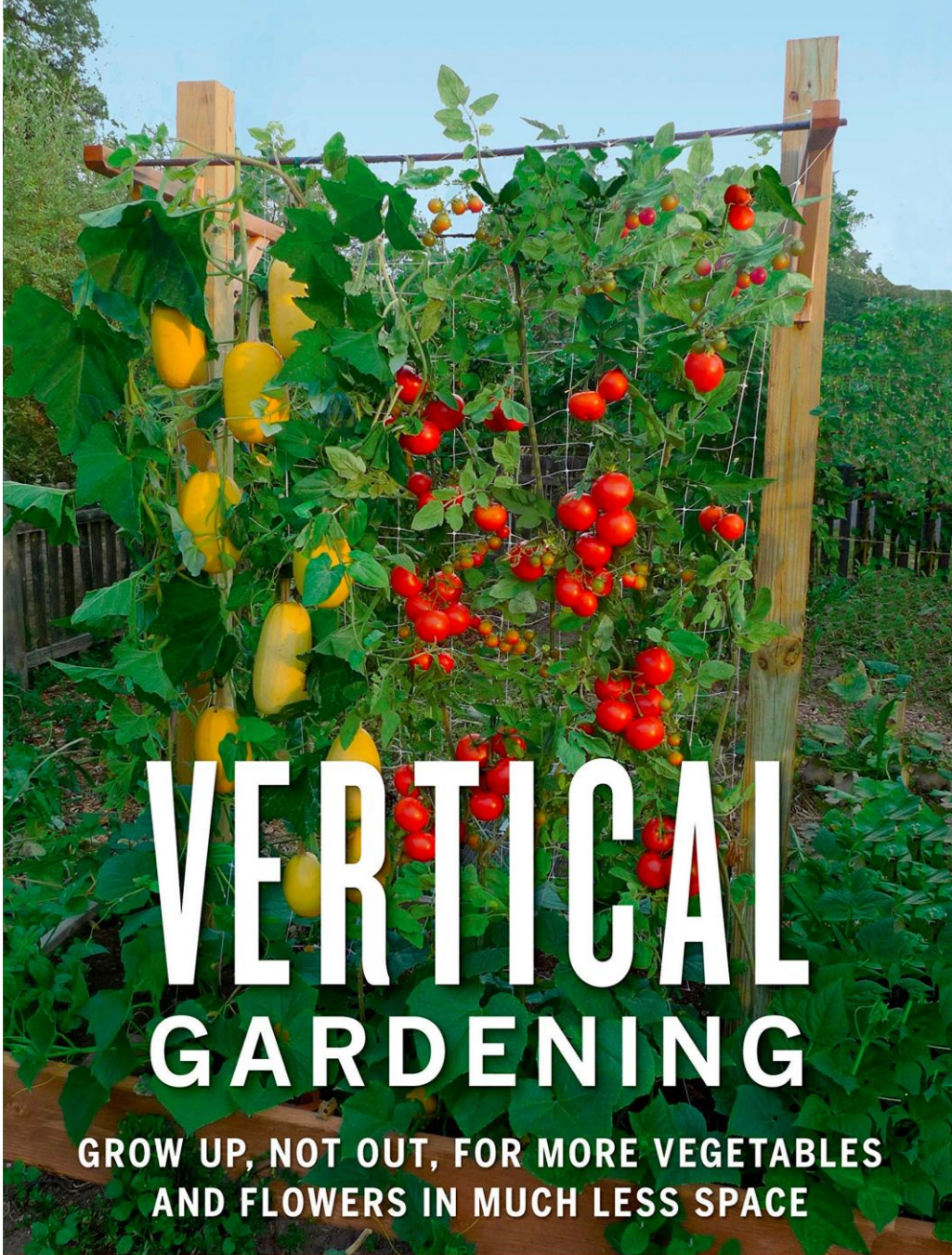
---

Vegetables

Credit: [SvenHilker \(Pixabay\)](#)

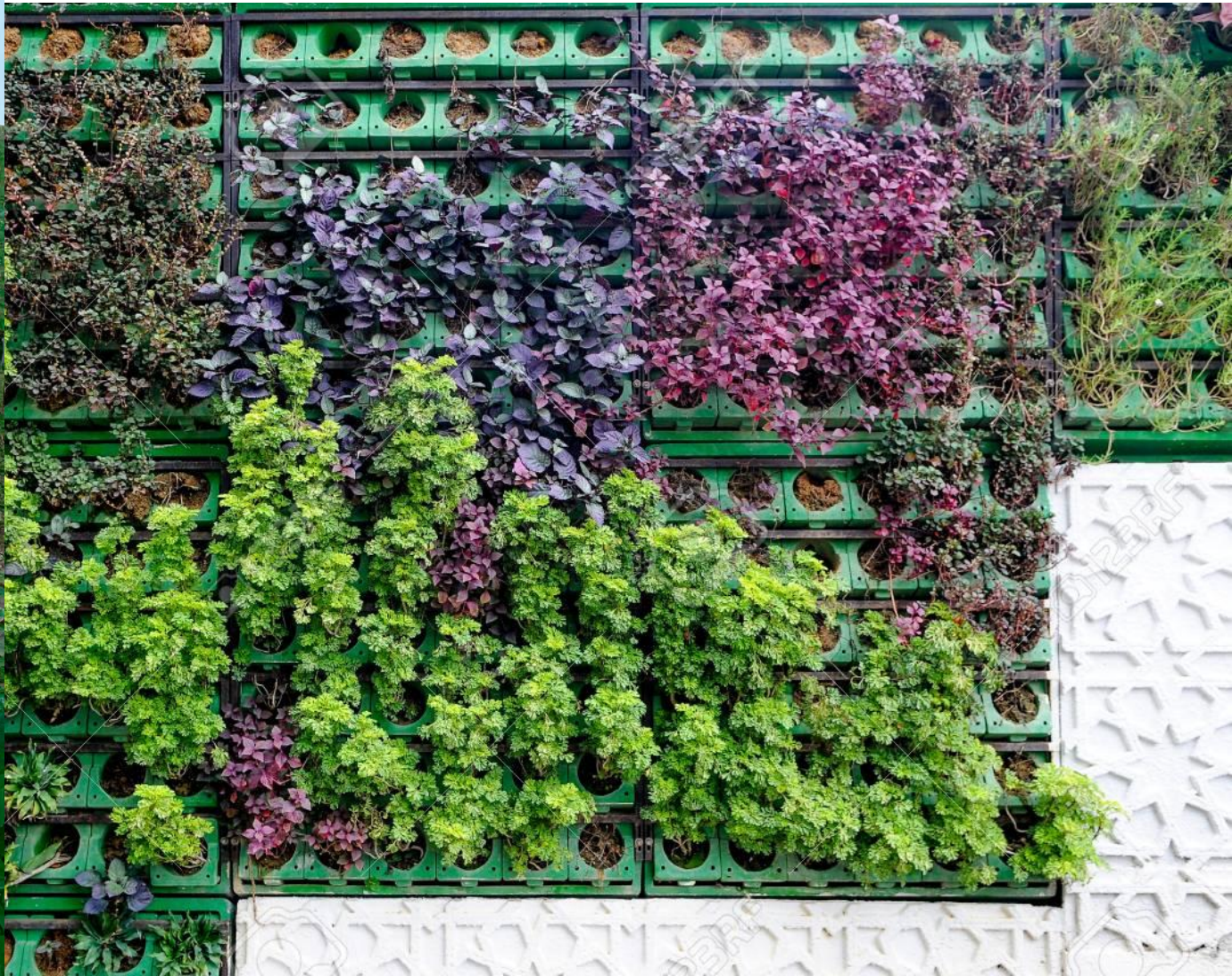






# VERTICAL GARDENING

GROW UP, NOT OUT, FOR MORE VEGETABLES  
AND FLOWERS IN MUCH LESS SPACE



DEREK FELL



# kambha



**Kambha with plant**



*Example of a painted kambha. There are 8 patterns*



*The NEW Rat-Proof lid. (inset fit kambha)*



**Kambha without plant**

# Farm to Fork

1. Supply Chain

2. Office Practices

FARMING

MANUFACTURING

PACKAGING

ANNIE'S

3. Inspire Change

4. Track & Measure





WHAT WE DO ▾

RESOURCES ▾

OPPORTUNITIES

BLOG

CONTACT US



# URBAN ZOO





www.shutterstock.com · 1488446693



www.shutterstock.com · 635866208



*better lives through livestock*

**ilri.org**

ILRI thanks all donors and organizations who globally supported its work through their contributions to the **CGIAR system**

*Patron: Professor Peter C Doherty AC, FAA, FRS*

*Animal scientist, Nobel Prize Laureate for Physiology or Medicine—1996*

Box 30709, Nairobi 00100 Kenya  
Phone +254 20 422 3000  
Fax +254 20 422 3001  
Email [ilri-kenya@cgiar.org](mailto:ilri-kenya@cgiar.org)

[ilri.org](http://ilri.org)  
*better lives through livestock*

ILRI is a CGIAR research centre

Box 5689, Addis Ababa, Ethiopia  
Phone +251 11 617 2000  
Fax +251 11 667 6923  
Email [ilri-ethiopia@cgiar.org](mailto:ilri-ethiopia@cgiar.org)

*ILRI has offices in East Africa • South Asia • Southeast and East Asia • Southern Africa • West Africa*



This presentation is licensed for use under the Creative Commons Attribution 4.0 International Licence.