

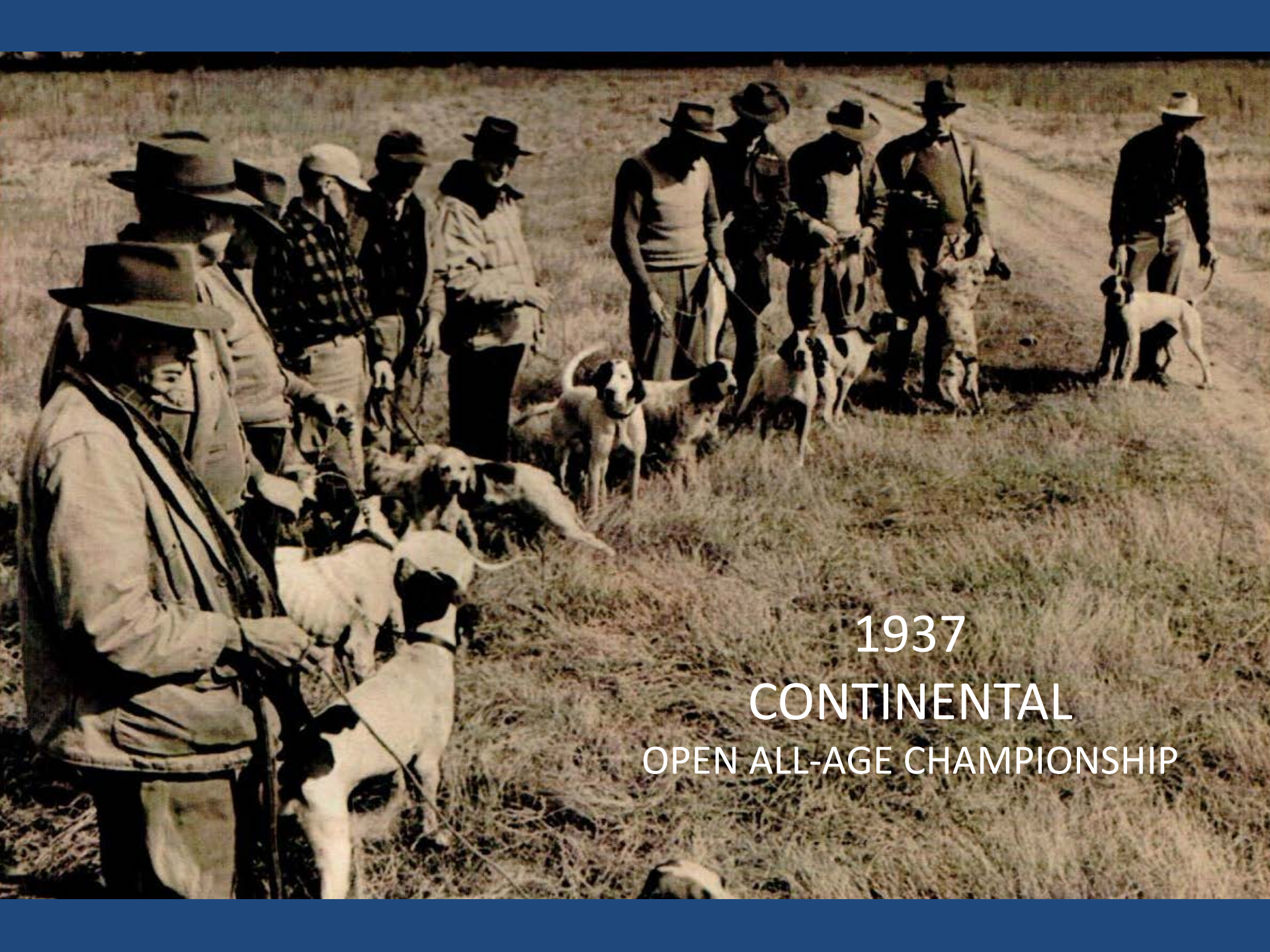
A group of approximately eight people are riding horses along a dirt path through a dense forest of tall, thin trees. The riders are dressed in outdoor attire, including jackets and hats. The scene is captured in a natural, slightly overcast setting, with sunlight filtering through the trees. The text is overlaid on the top half of the image.

EFFECT OF FIELD TRIALS ON NORTHERN BOBWHITE SURVIVAL AND HUNT QUALITY ON DIXIE PLANTATION

D. Clay Sisson & Theron M. Terhune
Tall Timbers Research Station & Land Conservancy

INTRODUCTION

- EFFECTS FROM HUNTING: Stoddard (1931), Rosene (1969), Klimstra (1972), Kellogg et al. (1982), Janvrin (1991)
- EFFECTS OF FIELD TRIALS: Dimmick and Yoho (1972), Wiseman (1972), Kreh (1997)



1937
CONTINENTAL
OPEN ALL-AGE CHAMPIONSHIP

2017 CONTINENTAL OPEN ALL-AGE CHAMPIONSHIP



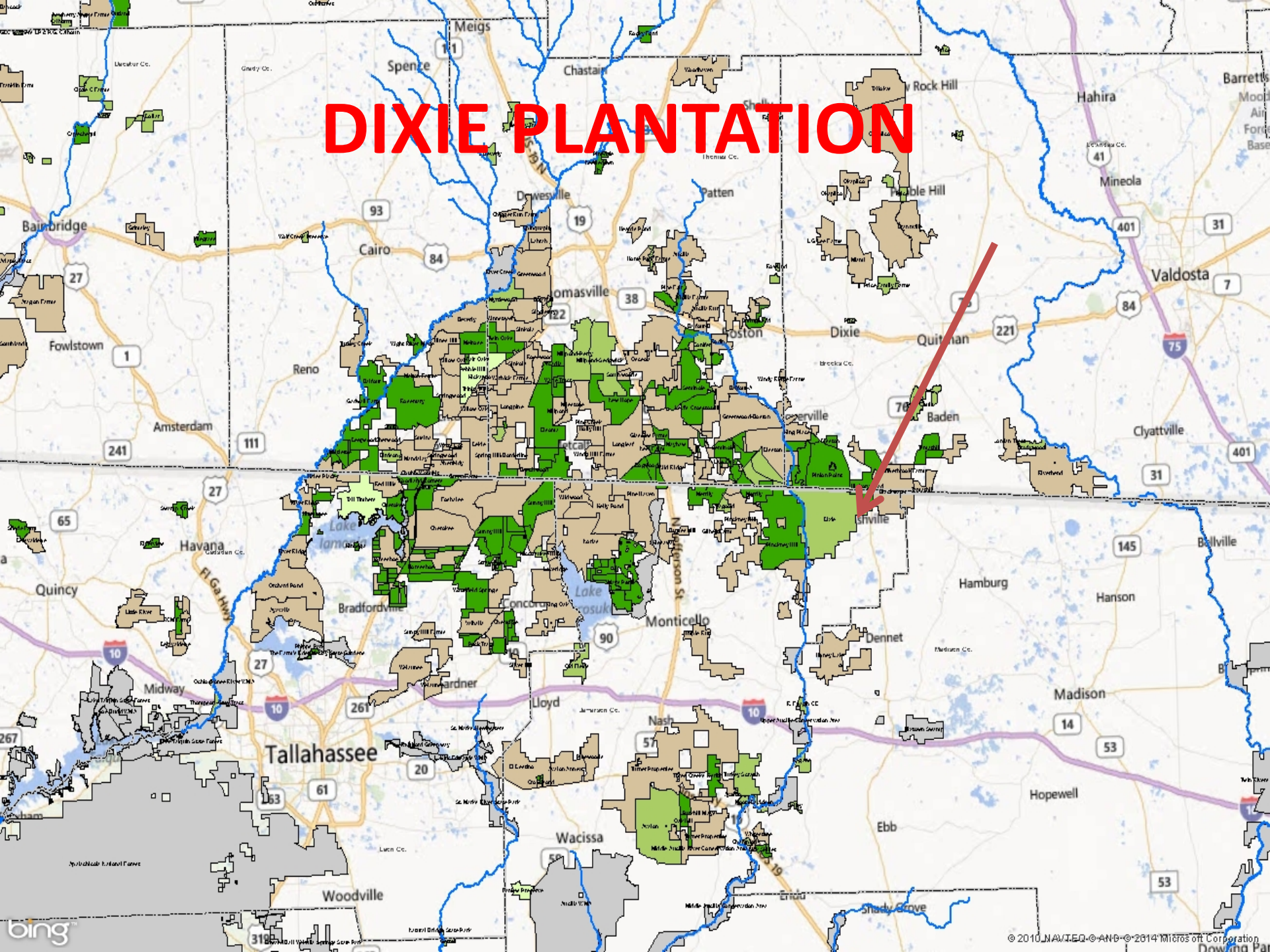


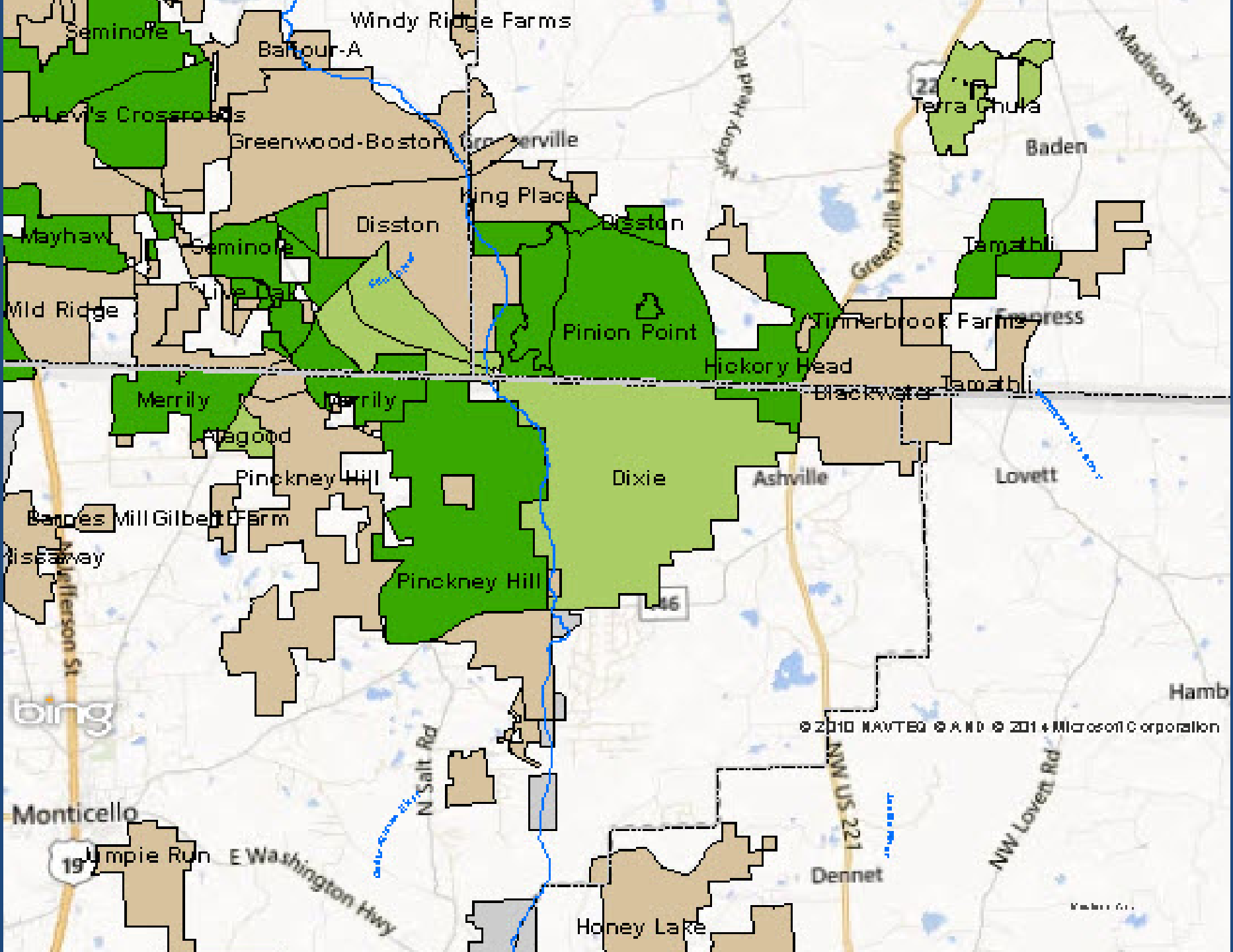
DIXIE PLANTATION RESEARCH, LLC
TALL TIMBERS RESEARCH STATION & LAND CONSERVANCY

DIXIE PLANTATION OBJECTIVES

- HIGH WILD BOBWHITE POPULATION FOR HUNTING AND FIELD TRIALS
- PROTECT ECOLOGICAL, CULTURAL, AND HISTORICAL VALUES
- RESEARCH AND EDUCATION

DIXIE PLANTATION





Seminole

Windy Ridge Farms

Balfour-A

Terra Chuka

Baden

Greenwood-Boston

King Place

Disston

Boston

Tamathi

Wayhaw

Wild Ridge

Pinion Point

Timberbrook Farms

Merrily

Merrily

Blackwater

Tamathi

Flagood

Pinckney Hill

Dixie

Ashville

Lovett

Bancroft Mill Gilbert Farm

Wiseaway

Pinckney Hill

46

Hamb

bing

© 2010 NAVTEQ © AND © 2011 Microsoft Corporation

Monticello

19

Umpie Run E Washington Hwy

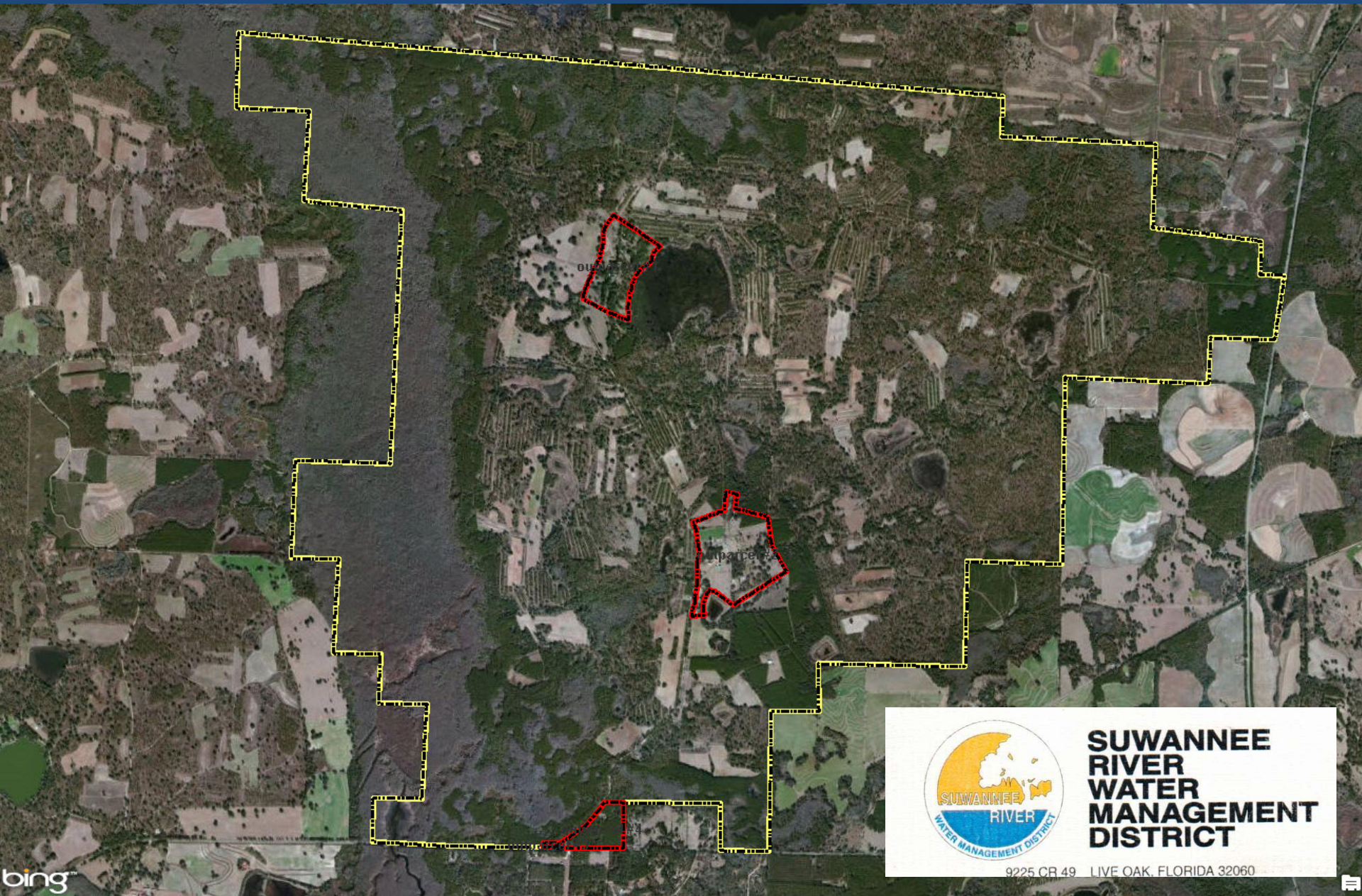
N Salt Rd

NW US 221

Dennet

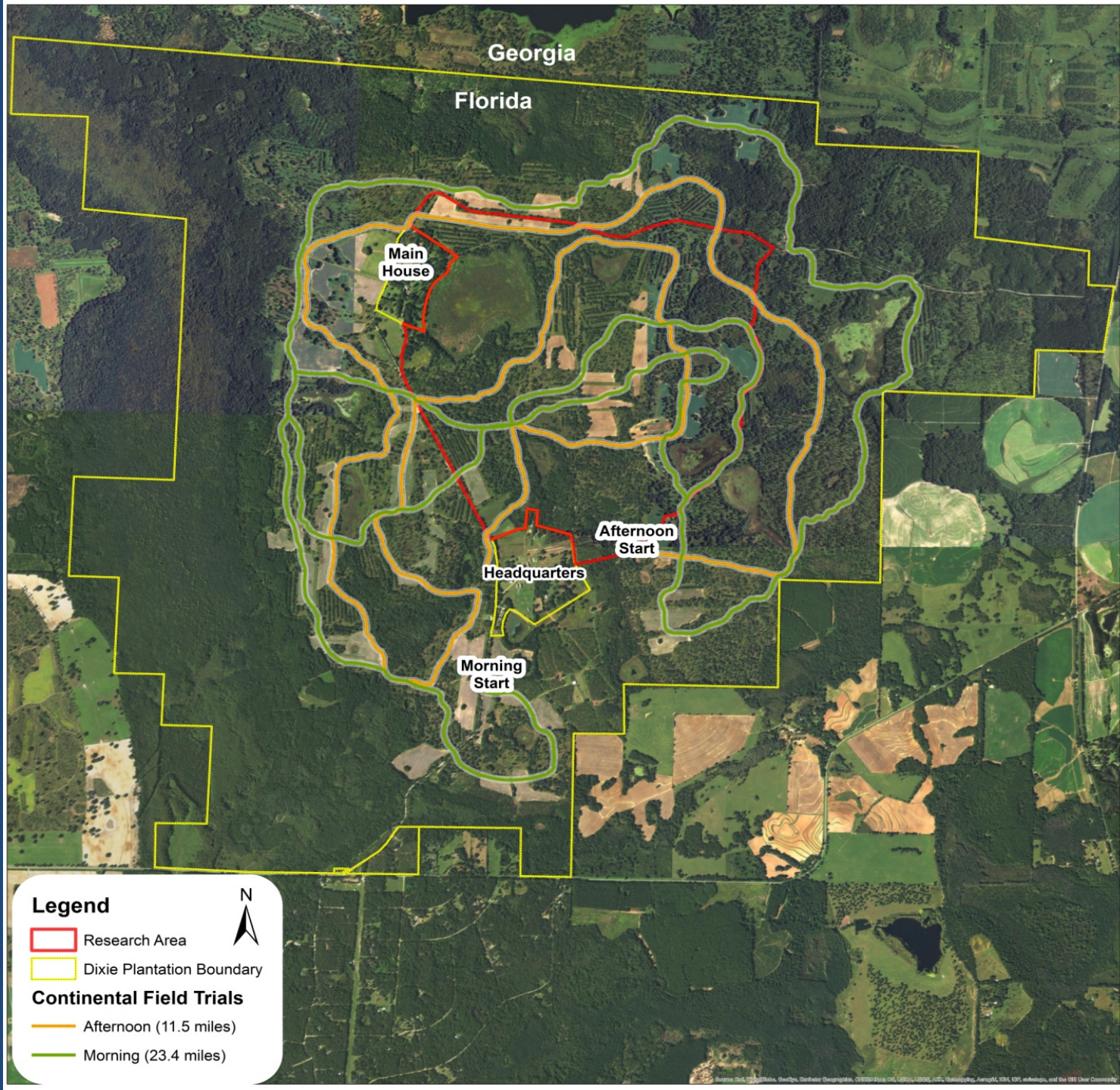
NW Lovett Rd

Honey Lake



**SUWANNEE
RIVER
WATER
MANAGEMENT
DISTRICT**

9225 CR 49 LIVE OAK, FLORIDA 32060



Georgia

Florida

Main House



Afternoon Start

Headquarters



Morning Start

Legend



-  Research Area
-  Dixie Plantation Boundary

Continental Field Trials

-  Afternoon (11.5 miles)
-  Morning (23.4 miles)











AGRICULTURE



RESEARCH/MONITORING

*QUAIL TELEMETRY

- Demographics
- New Ground Effect
- Cotton
- Field Trials

•TRANSLOCATION

•MONITORING

- Quail Census
- Cotton Rats
- Hawk Counts
- Predator Index

•Herpfest

- Songbird Survey
- Native Groundcover



EDUCATION/OUTREACH



HUNTING LEASES



WILD QUAIL HUNTING



METHODS

RADIO-TELEMETRY

DIXIE AND TALL TIMBERS
20 COVEYS EACH
MONITORED 2-4X WEEKLY

HORSEBACK HUNTING

DIXIE EMPLOYEE PRESENT
3 HOUR HALF DAY
COVEYS SEEN, POINTED, & SHOTS
FIRED RECORDED

FIELD TRIAL DISTURBANCE

2 WEEKS IN JANUARY
NO BIRDS SHOT - REPEATED
DISTURBANCE OF SAME COURSES

STATS

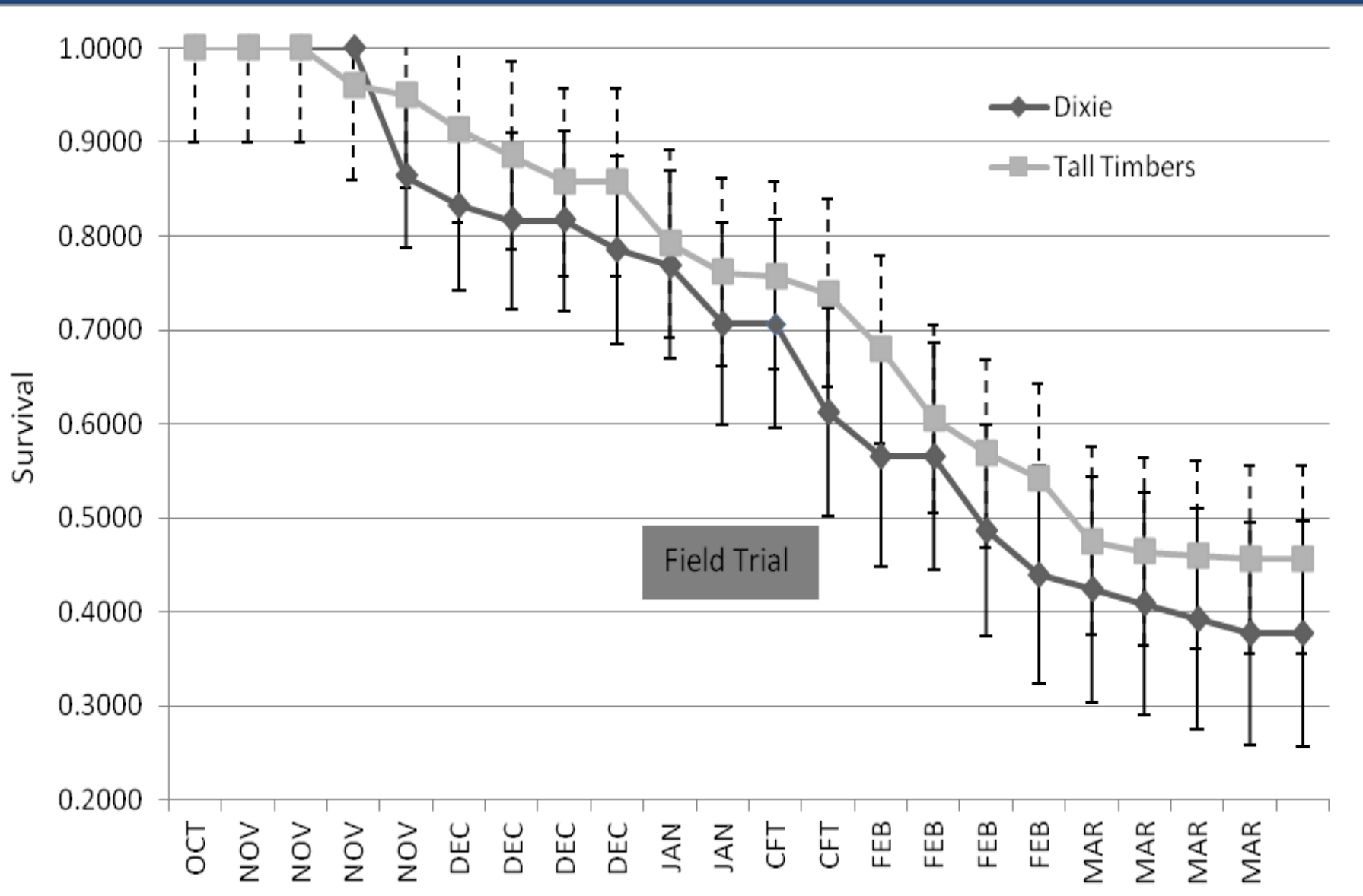
KM SURVIVAL ESTIMATED COMPARED
2 WEEK INTERVALS BEFORE, DURING,
AFTER
MEAN, SE, 95% C.I. HUNT QUALITY



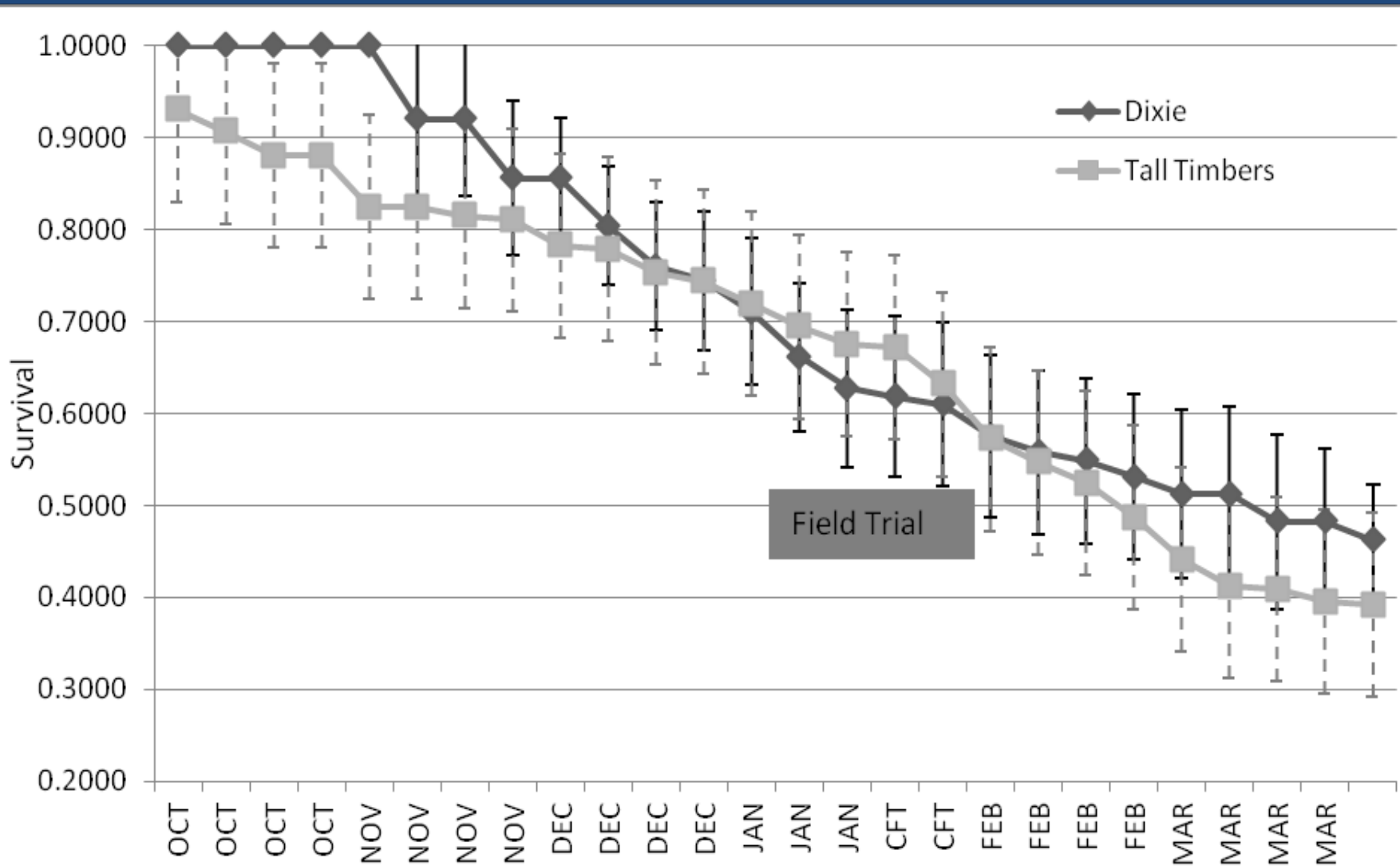
RESULTS

- 570 RADIO-TAGGED BIRDS
- 133 HALF DAY HUNTS (78 BEFORE / 55 AFTER)

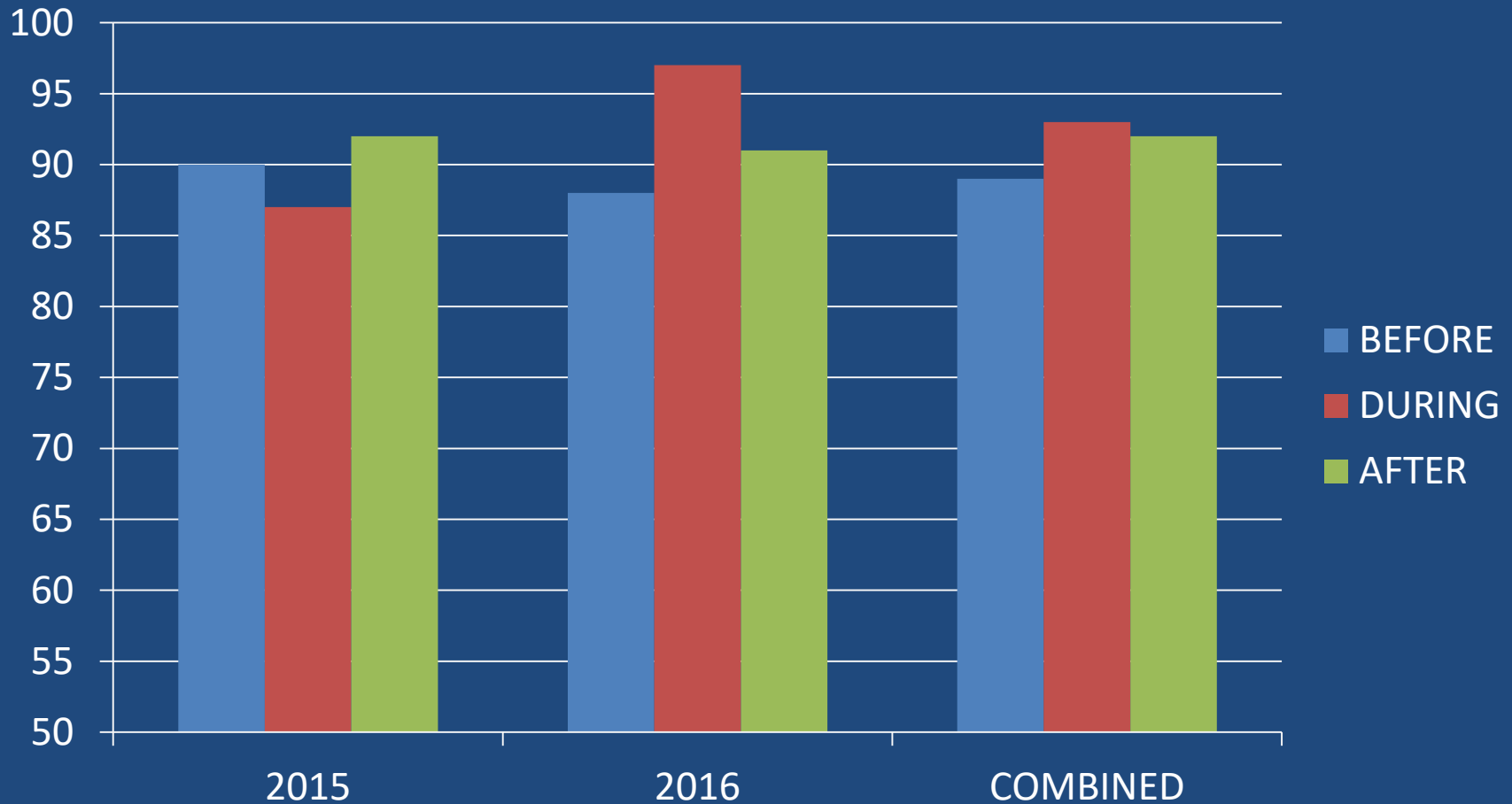
2014-2015



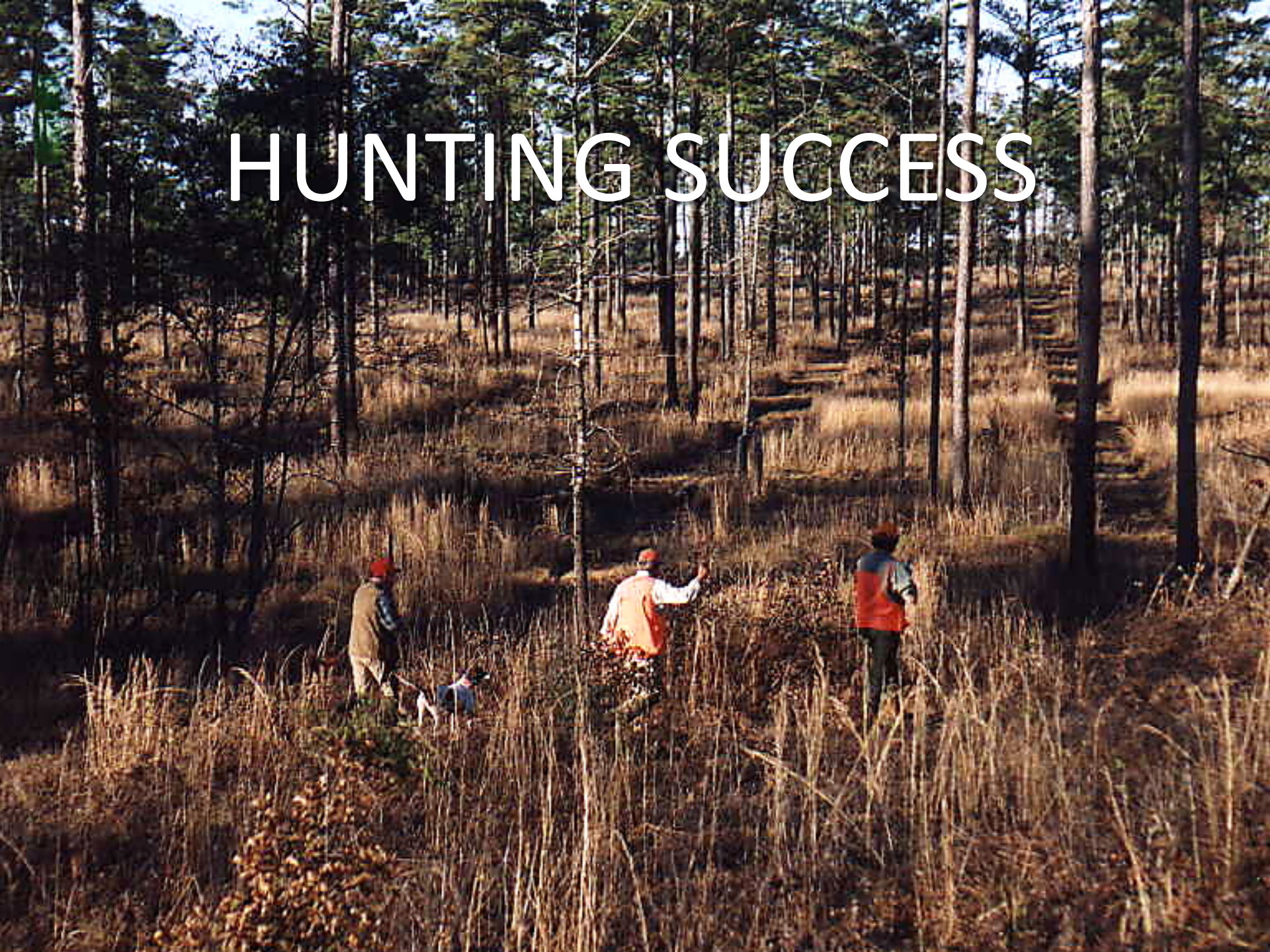
2015-2016



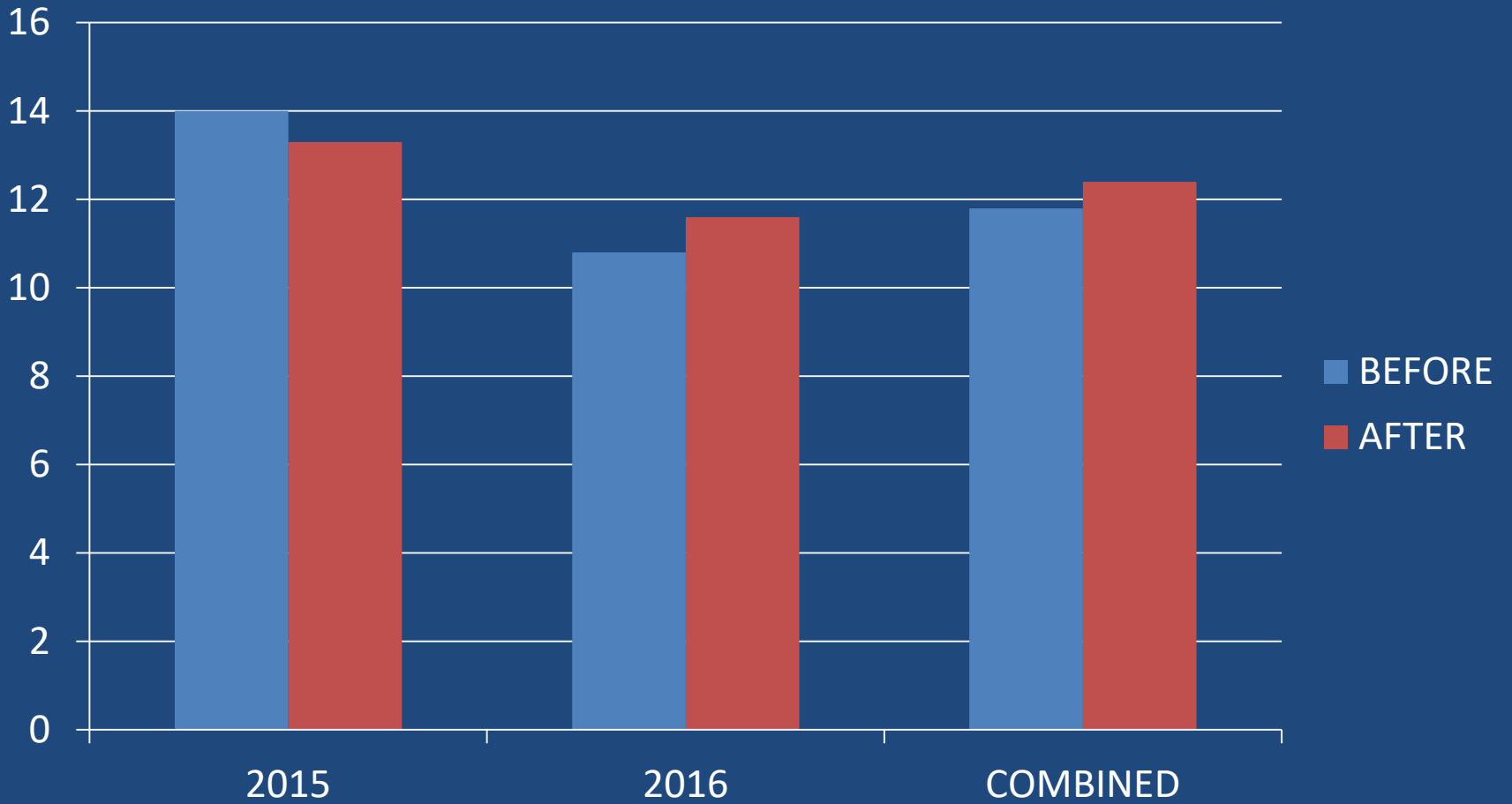
KM SURVIVAL (2 WEEK INTERVALS)



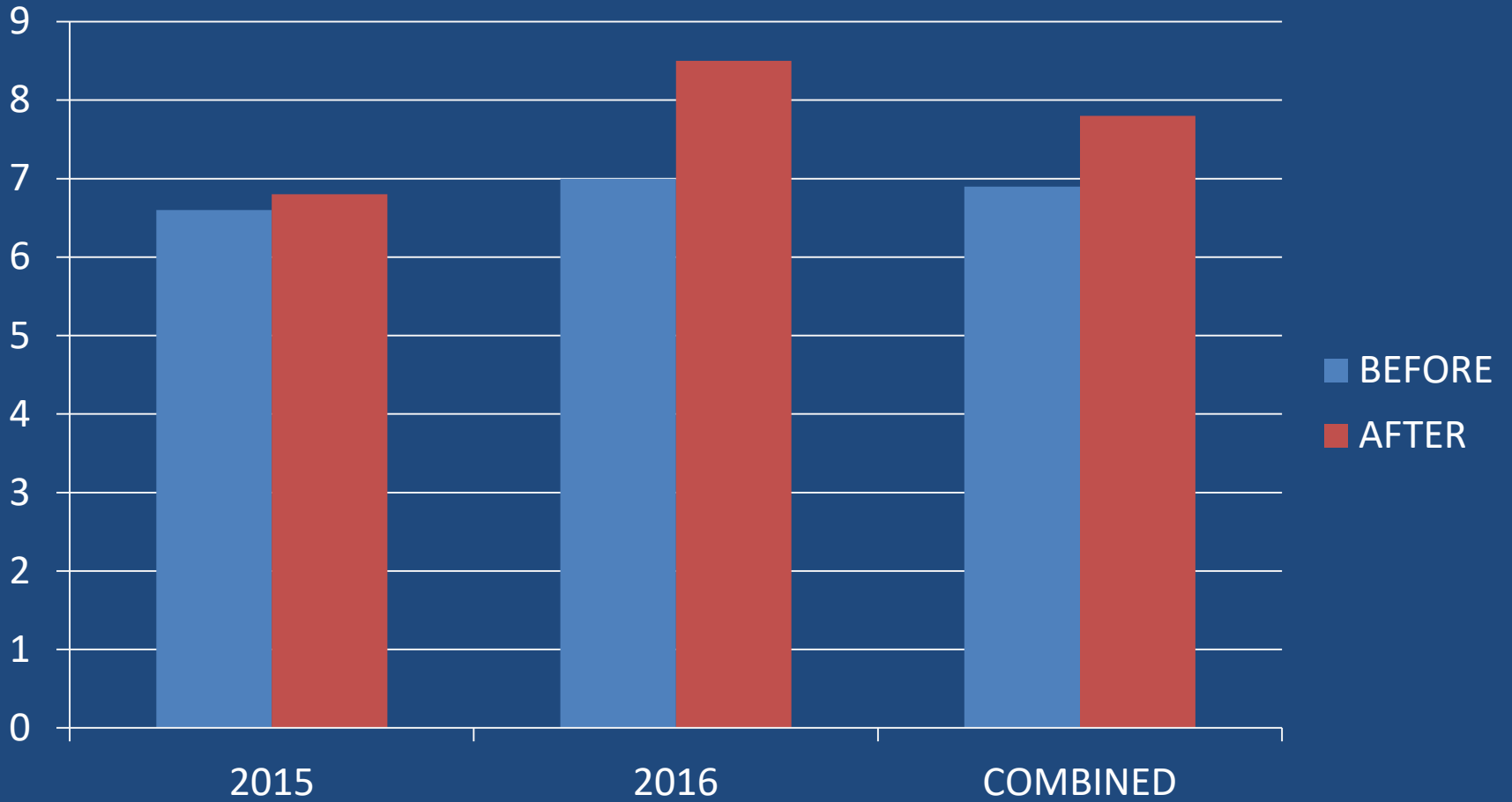
HUNTING SUCCESS



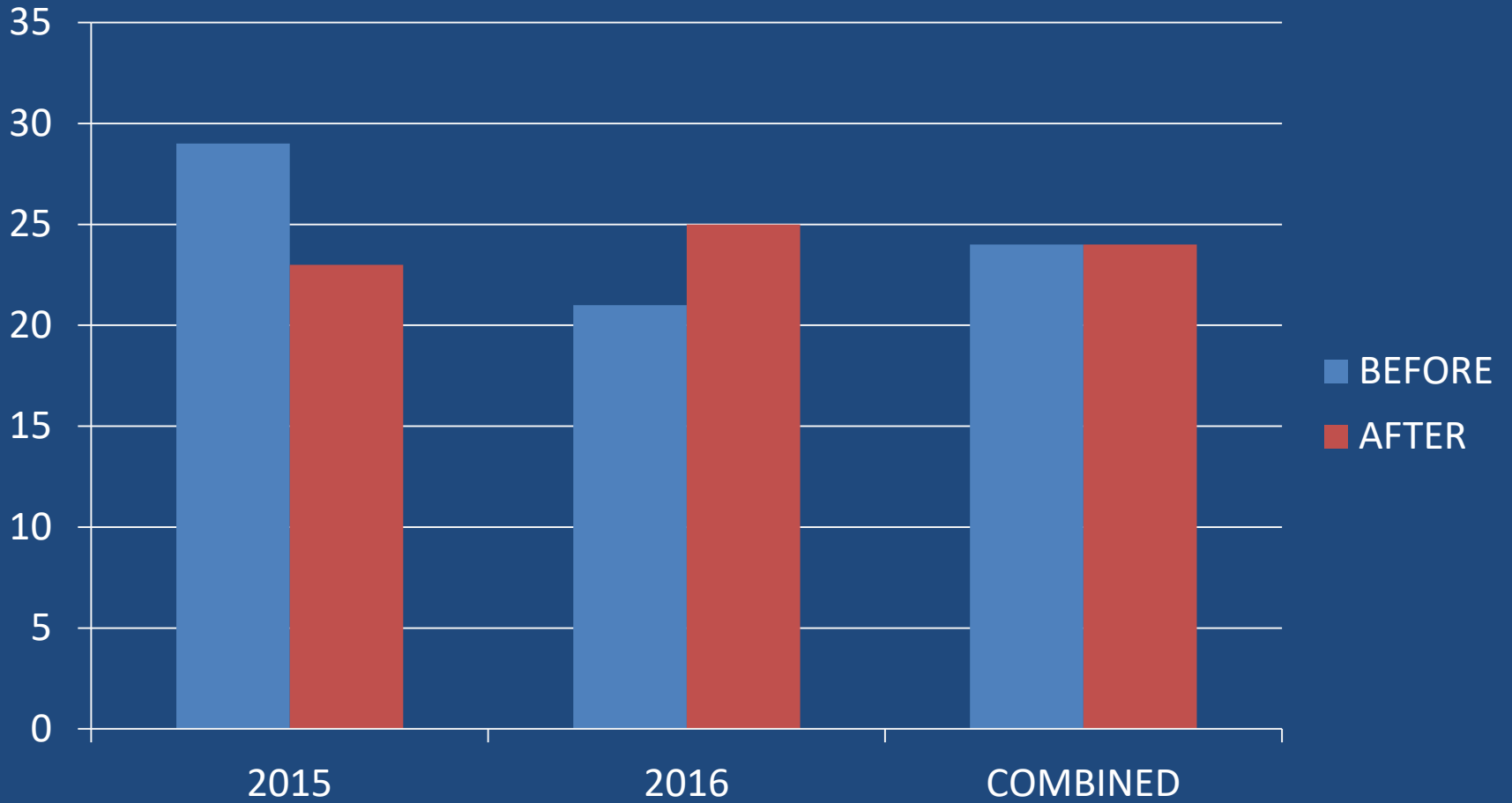
COVEYS SEEN



COVEYS POINTED



SHOTS FIRED



DISCUSSION & MGMT IMPLICATIONS

- LITTLE TO NO EFFECT ON SURVIVAL
- NO NEGATIVE EFFECTS ON HUNT QUALITY
- FIELD TRIALS AND HUNTING CAN CO-EXIST

QUESTIONS?

