

Spring 2015

Semi-Permanent Forms

Deighton Abrams
Clemson University

Follow this and additional works at: https://tigerprints.clemson.edu/grads_symposium

Recommended Citation

Abrams, Deighton, "Semi-Permanent Forms" (2015). *Graduate Research and Discovery Symposium (GRADS)*. 184.
https://tigerprints.clemson.edu/grads_symposium/184

This Poster is brought to you for free and open access by the Research and Innovation Month at TigerPrints. It has been accepted for inclusion in Graduate Research and Discovery Symposium (GRADS) by an authorized administrator of TigerPrints. For more information, please contact kokeefe@clemson.edu.

SEMI-PERMANENT FORMS

CERAMIC INSTALLATION AND DIALOGUE

Deighton Abrams

ABSTRACT

As a ceramic artist, I am using high fired porcelain forms to create miniature memorials for our ever shrinking polar ice caps. Through the use of public installation, I am seeking to arrange the ceramic forms in ways that potentially confront the viewer in hopes to generate discourse and/or reflection. The use of ceramic materials acts as a didactic narrative; firing the porcelain clay creates an irreversible form, an image of unmeltable ice and the placement in public spaces hopes to open this dialogue. In the future, I plan to increase the scale/number of pieces and create more lasting installations.

CLEMSON[®]
ART

deightonabrams.com

RESEARCH

James Balog

Extreme Ice Survey (EIS)

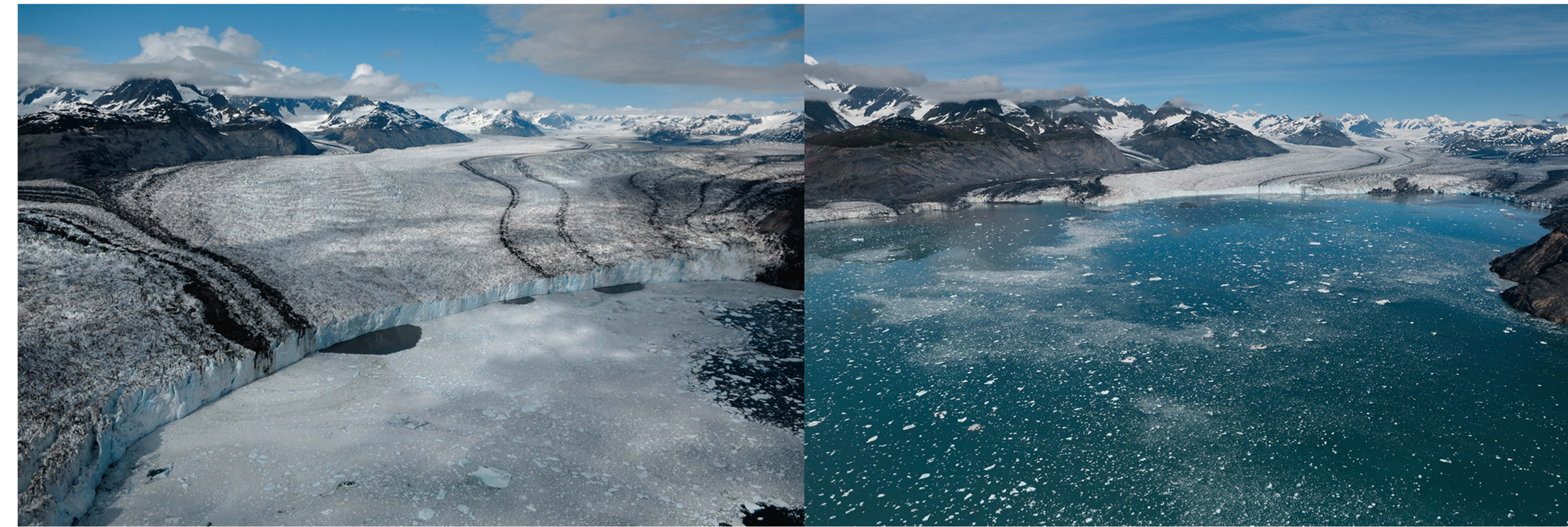
National Resources Defense Council

Edmund De Waal

Paul Cummins

Paula Winokur

Porcelain Souvenirs



James Balog *Columbia Glacier, Alaska, 2006-2012*



Semi-Permanent Form I, Various Installations, 2015.