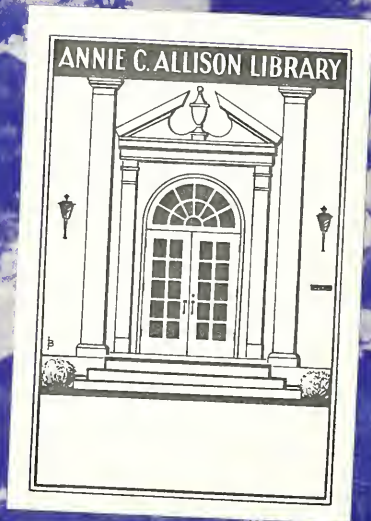


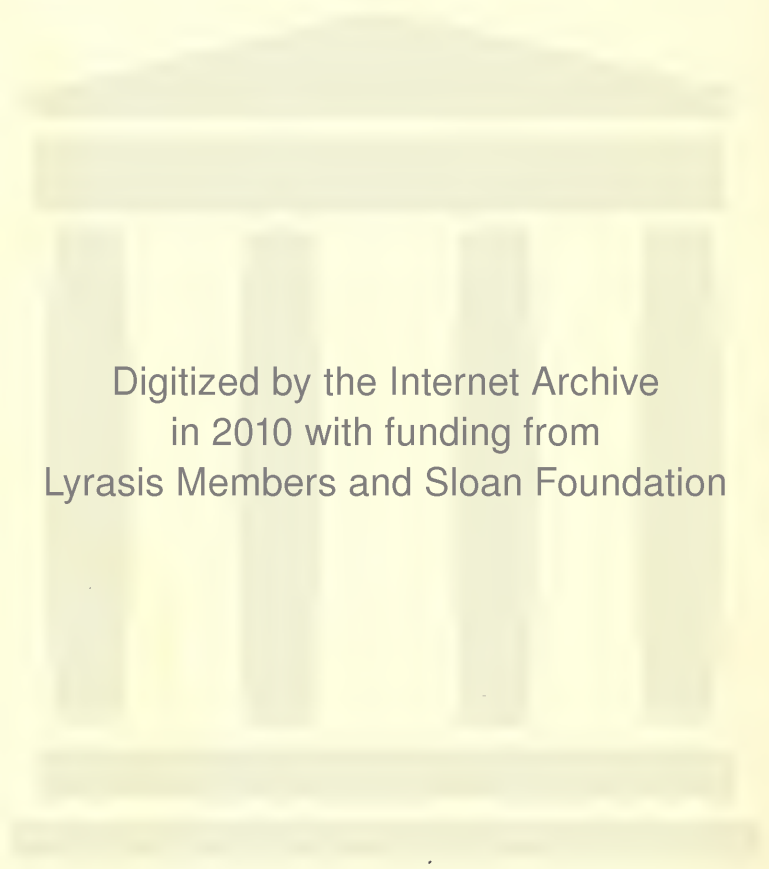


*The* **MILESTONES**  
1941









Digitized by the Internet Archive  
in 2010 with funding from  
Lyrasis Members and Sloan Foundation

<http://www.archive.org/details/milestones1941ward>





*Ex Libris*



**PUBLISHED BY THE STUDENTS OF WARD**

---

---

*lestones*

1941

VOLUME TWENTY-SEVEN

ELMONT SCHOOL • NASHVILLE, TENNESSEE

---

---



- ★ ADMINISTRATION
- ★ CLASSES
- ★ ACTIVITIES
- ★ SPORTS
- ★ CLUBS
- ★ FEATURES





## MILESTONES STAFF

*Editor in Chief*-----ROBERTA DORTCH  
*Day Student Editor*-----ANN HALEY ★  
*Business Manager*-----MARY BAUMAN ★  
*Associate Editor*-----DOROTHY POWELL  
*Feature Editor*-----PATTY JOHNSON ★  
*Assistants*-----{ MARYJO MEACHAM ★  
                                   { KATHERYN SATTERFIELD ★

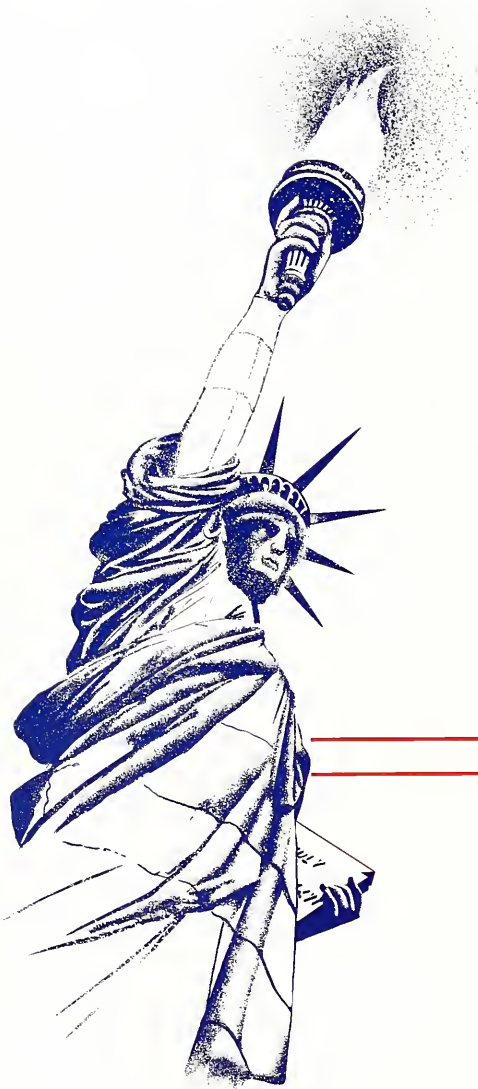
*Art Editors*-----{ BEVERLY FROMAN  
                                   { MARY KNEPP  
*Photographic Editors*---{ NANCY FISCHER  
                                   { VIRGINIA LOVE GRAVES  
                                   { VIRGINIA ROARK  
*Day Student Representative*-----BETTY CURTISS  
*Preparatory School Representative*---JOYCE HARPER  
*Sponsor*-----MISS GENE MOORE

# P R E F A C E

Just as the American people prize nothing so much as the principles of their democracy, so the students of Ward-Belmont value above all else the characteristics of true Americanism which they receive from every activity of their school.

The purpose of Ward-Belmont has always been, and shall continue to be, the fostering of respect for the liberties and privileges of citizenship, both in the school and in the nation.

Let the MILESTONES, therefore, embody and reflect such respect for a great purpose of a great institution, and let the democratic spirit ring throughout these pages as it shall ring throughout the pages of the history of the American people.







## DEDICATION

Each chapter of the long, rambling, and vivid chronicle of American history has within itself the tales of women of courage and foresight who have shaped, through their patriotic idealism, the destiny of a nation.

To such a woman is this book presented, not for participation in national affairs, but for the fact that she has lived her full life simply, yet with unswerving devotion to her school and her girls.

To Mrs. John Diell Blanton, then, the MILESTONES is dedicated, and with it is dedicated both love and admiration for a great American.









**ACKLEN HALL,** Beautiful home of Belmont girls for seventy-five years . . . rich in history and Southern charm . . . ornately mirrored and carpeted in wine, the marble statue of Ruth, the fragile chairs and the iron grillwork . . . Acklen Hall makes every girl proud of her school.





**THE CENTER FOUNTAIN,** Shaded, quiet, and cool . . . goldfish drift slowly in the shadow of magnolia trees . . . streams of clear water pouring endlessly down the smooth white stone . . . a place to sit, to dream, and to remember.



**BLANTON ACADEMIC BUILDING,** Etched against the blue of a spring sky . . . tall pillars standing at attention guard the knowledge to be found within . . . French doors arched against the brick . . . stone steps never unoccupied by girls, books, and the deepest of conversation.





**THE SINGING TOWER,** Ivy-covered walls reach toward the heavens, and chimes serenade the campus with a crystal harmony of sound . . . tradition and love surround a monument to the passing years . . . sunset and sunrise, vespers and ceremonies, the chimes ring out at Ward-Belmont.





**EUSTICE A. HAIL HALL,** Newest of the dormitories retains the aura of the Old South . . . white pillars facing a green velvet lawn, sunlit rooms overlooking the riding ring or Club Village . . . the meeting place of friendship and cooperation and loyalty.



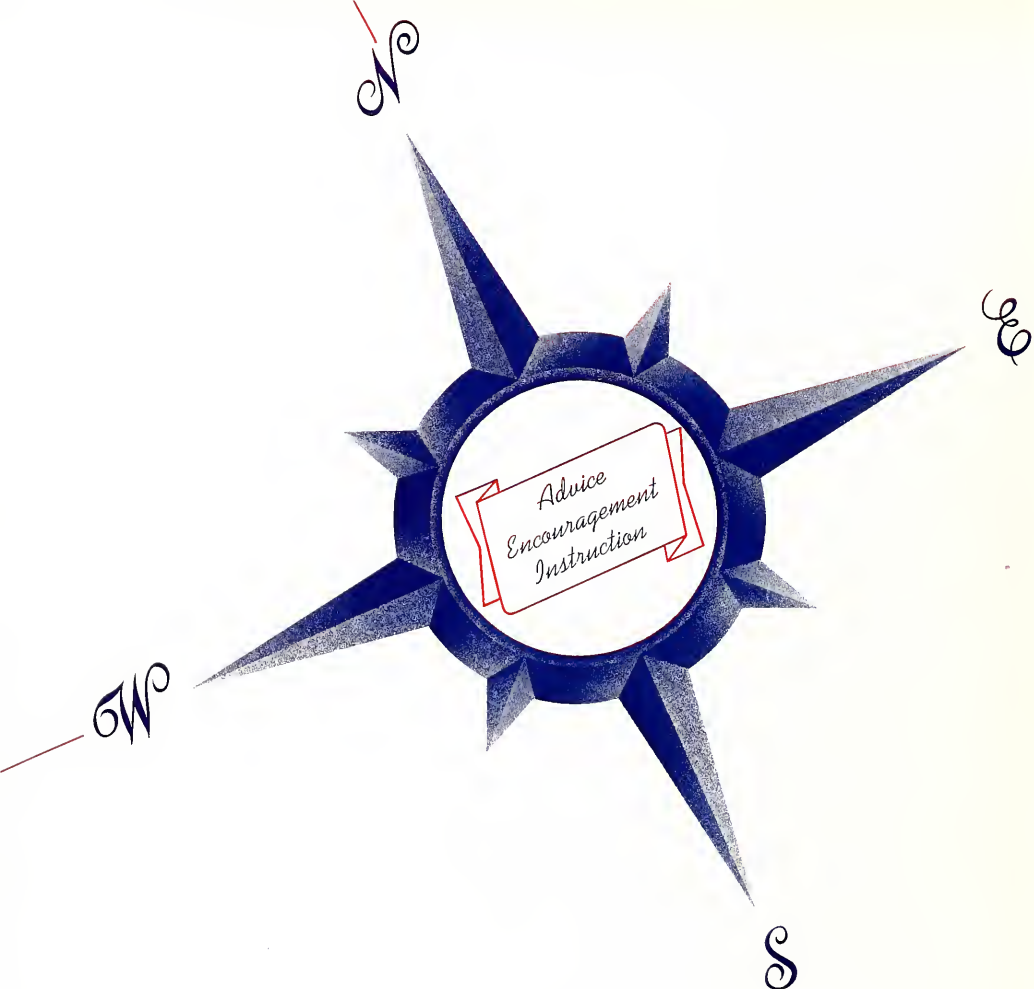
**PILLARS OF NORTH FRONT,** Tall, serene, stately, they rise on the crest of the hill, giant sentinels of a great institution . . . symbols of ideals and standards which cannot crumble nor fade. . . bulwarks of the auditorium and gates to a culture a century old.





**ENTRANCE TO CLUB VILLAGE,** Entrance to life behind the scenes and to club life, the dearest treasure of every girl . . . radiant with spring, sparkling with winter, or filled with young voices and the sounds of carefree laughter. Club Village is to every club member a precious memory set in the joy of the past.





Advice  
Encouragement  
Instruction

*from your*

★

★

★

★

a d m i n



i s t r a t i o n



DR. JOSEPH E. BURK

President

The big, kind, fatherly president of Ward-Belmont has a warm spot in his heart for every student and time on his overrun schedule for both their joys and trials. Dr. Burk fills the shoes of president more than amply and provides help and encouragement whenever and wherever it is needed.



MISS MARIE TAYLOR

Dean of Students

Herself a Ward-Belmont graduate, Miss Taylor has in her first year as dean of students brought to her difficult position a charm, poise, and dignity which render her a great addition to the beauty and tradition of the school, while her kindness and fairness have endeared her to both the faculty and the girls.





**DR. ROBERT C. PROVINE**

**Dean of Faculty**

The dean of the college department personifies that rare combination of the intellect of a Socrates and the patience of Job. No girl leaves Dean Provine's office without a lasting impression of the charm and cordiality with which he treats all alike.



**MISS ANNIE C. ALLISON**

**Principal of Preparatory School**

Ward-Belmont's sweet and lovely lady, Miss Allison, is a living embodiment of all the grace and tradition of the years. Every graduate who leaves the preparatory school does so with fond memories of "Miss Annie," whose counsel and affection reach out to each girl.



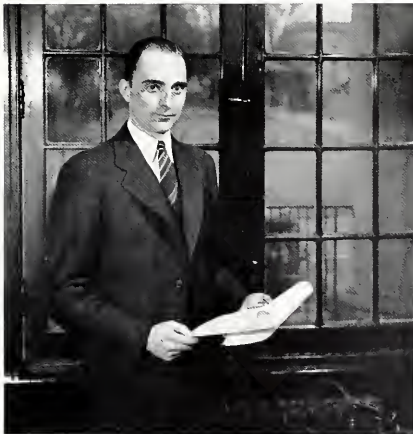
**MISS ALMA PAINE**  
Registrar

The ability to meet others and retain lifelong friendships is the special talent of Ward-Belmont's registrar. As charming in appearance as in manner, Miss Paine is the true representative of the Ward-Belmont spirit.



**DR. ALAN IRWIN**  
Dean of Conservatory of Music

Though new to our ranks this year, Dr. Irwin has already proved himself as dean of the conservatory, as an artist in his own right, and as a favorite with all who have known and worked with him. His teaching and personality are a valuable asset to Ward-Belmont.



**MR. FOREST K. FOWLER**  
Business Manager

The business end of every organization must be kept in order, and this Mr. Fowler has efficiently accomplished for Ward-Belmont. Because of his skillful guidance, the school continues safely on its financial journey through the year.



**MISS GENE MOORE**  
Alumnae Secretary

One of the favorites among the newcomers to the campus this year is the youngest member of the administrative body. In charge of publicity, publications, and alumnae, attractive Miss Moore is well worthy of her campus-wide popularity.

F  
A  
C  
U  
L  
T  
Y

MARY VENABLE BLYTHE  
*Sight Playing and Theory*

Graduate, St. Mary's Hall, San Antonio; Pupil of Von Micksitz and Harry Reidman; Theoretical Courses in Southern Methodist University, University of Southern California, University of Colorado.  
Sponsor of Fire Drills.



MARY ELIZABETH CAYCE  
*Physical Education*

Graduate, Ward-Belmont School; B.S., George Peabody College for Teachers.  
Sponsor, Junior-Middle Class, Day Student Unit.

FLORENCE N. BOYER  
*Voice*

Student of Music in Oberlin College; Pupil of Signor Vananni in Italy; Pupil of Mesdames de Sales and Bosetti in Munich; Pupil of Oscar Seagle and de Keske in Paris.



LOUISA CROCKETT  
*Latin and Mathematics*

B.A., Vanderbilt University; M.A., George Peabody College for Teachers.

VERNA BRACKINREED  
*Piano*

Graduate, Baker Conservatory, Flint, Michigan; B.Mus., Cincinnati Conservatory of Music; Pupil of Mlle. Diendorne, Paris; of Isador Phillip, Fontainebleau; of Labunski, Thalberg, Eisenberger, and Ganz.



SYDNEY DALTON

*Head of Voice Department*  
L.Mus., Dominion College of Music, Montreal; M.Mus., Cincinnati Conservatory of Music; Pupil of David Bishop, Max Heinrich, and J. H. Duval; Studied Piano with Rafael Joseffy; Composition with Rubin Goldmark and Frederic Schlieder.  
Director, Glee Club.

GERTRUDE CASEBIER  
*History*

B.A., Western Kentucky State Teachers College; M.A., Vanderbilt University.  
Sponsor, Agora Club, Senior Hall.



MARY ELIZABETH DELANEY  
*Dancing*

Graduate, Chalf Normal School of Dancing; special student, Emerson College of Oratory; Pupil of Dorothy Norman Cropper, Rose Byrn, Hans Weimer, Perry Mansfield, Jack Donahue, Ivon Tarasoff, Albertina Rasch.  
Sponsor, Fidelity Hall.

MARTHA ANNETTE CASON  
*Latin*

B.A., University of Chicago; M.A., Columbia University; further graduate study, Columbia University.



DOROTHY A. DIETRICH  
*German and English*  
B.A., M.A., Indiana University.  
Sponsor, German Club, Osiron Club.

THOMAS B. DONNER

*Spanish*

B.A., East Texas Teachers College;  
M.A., Southern Methodist University.  
Co-Sponsor, Spanish Club.



LUCIE L. FOUNTAIN

*French*

B.A., Barnard College.

MARY DOUTHIT

*Piano*

Graduate, Ward-Belmont School of Music; Pupil of Lawrence Goodman, Harold Von Miekwitz and Sigismund Stojowski; Student, Cincinnati Conservatory of Music, University of Southern California, and Texas Christian University.  
Sponsor, Captivators.



FLORENCE F. GOODRICH

*Physical Education and Physiology*

B.S., Hillsdale College; M.S., University of Michigan; graduate student, Michigan State College for Teachers, Merrill-Palmer School.

FRANCES EWING

*Economics and Commercial Law*

Graduate, Ward-Belmont School; B.A., M.A., Vanderbilt University.  
Sponsor, Angkor Club.



LOUISE GORDON

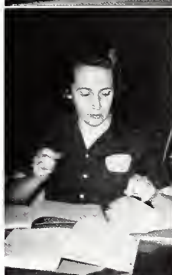
*Art*

Graduate of the New York School of Fine and Applied Arts; graduate study, Kansas City Art Institute and University of Colorado.

GERALDINE FARR

*Spanish*

B.S., and M.S., Kansas State Teachers College.  
Co-Sponsor, Spanish Club.



FRANCES GRAY

*Art History*

B.A., Gymnasium, Innsbruck, Tyrol; M.A., New York University; further graduate study, New York University, University of Vienna, and the Sorbonne, Paris.

HELEN KING FIDLAR

*Clothing*

B.S., M.S., Iowa State College.  
Sponsor, Anti-Pandora Club.  
Co-Sponsor, Home Economics Club.



NELLIE GREENBURG

*Biology*

B.S., M.S., Purdue University; graduate study, Duke Marine Laboratory.  
Sponsor, Hail Hall.

F  
A  
C  
U  
L  
T  
Y





DOROTHY NELSON GREGG

*Biology*

B.A., University of Iowa; M.S., Iowa State College.  
Sponsor, X. L. Club.



W. H. HOLLINSHEAD

*Chemistry*

Ph.G., D.Sc., Vanderbilt University.

F  
A  
C  
U  
L  
T  
Y

VERA L. HAY

*History and English*

Ph.B., University of Chicago; graduate student, Vanderbilt University and the University of Chicago.



MARGARET JACOBS

*English*

B.A., Transylvania College; M.A., University of Pennsylvania, certificate, Sorbonne, Paris.

CORA HENDERSON  
*Secretarial Training*

B.A., Southern College; M.A., George Peabody College for Teachers.



NELLE MAJOR

*Mathematics*

B.S., George Peabody College for Teachers.  
Sponsor, Beta Club.

FREDERICK ARTHUR HENKEL

*Head of Organ Department*

Graduate, Metropolitan College of Music; Student, Cincinnati College of Music; Pupil of Steinbrecher, Andre, Sterling, and Durst.



RACHEL MARKS

*Religion and Sociology*

*Second Semester*

B.A., Emory and Henry College; M.A., Scarritt College, graduate study, University of Virginia.  
Sponsor, Y. W. C. A.

ALMA HOLLINGER

*Biology*

B.A., M.A., University of Michigan; student, Michigan Biological Station and Marine Biological Station, Venice, California.



CATHERINE E. MORRISON

*Director, Department of Physical Education*

Diploma, Possee Gymnasium, Boston; special student, Chalif School, New York; Columbia University. Sponsor, Tri K Club, Heron Hall, Athletic Association.



IVAR LOU MYHR

English

B.A., Vanderbilt University; M.A., George Peabody College for Teachers; graduate student, Oxford University, Cambridge University, Yale University; Ph.D., Vanderbilt University.

Sponsor, Chimes.



BETTY PENICK

Assistant Librarian

Student, George Peabody Library School.

CAMILLA NANCE

Riding

B.S., Sargent School of Boston University.

Sponsor, Penta Tau Club, Turf and Farbank Club.



ANNA PUGH

English

B.A., University of Arkansas; M.A., University of Chicago; graduate student, Columbia University, George Peabody College for Teachers, Cambridge University, England.

MARY RACHEL NORRIS

Psychology

B.A., M.A., Bryn Mawr College; graduate study, George Peabody College for Teachers, Columbia University.



LINDA RHEA

English

B.S., Vanderbilt University; M.A., Columbia University; Ph.D., Vanderbilt University.

Sponsor, Senior Class.

MARTHA K. ORDWAY

English

Ph.B., University of Chicago; M.A., George Peabody College for Teachers.

Sponsor, Triad Club.



VIRGINIA RICHEY

Librarian

Graduate, Ward-Belmont School; B.A., Duke University; B.S., Library Science, University of Illinois.

Sponsor, A. K. Club.

FRANCES HELEN PARKER

Harp

B.A., Birmingham-Southern College; M.A., Vanderbilt University; Study at Eastman School of Music, Cincinnati Conservatory of Music; Private Lessons, Vienna; Pupil, Master Class of Carlos Salzedo.



LAWRENCE H. RIGGS

Head of Theory Department

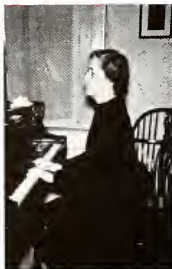
B.A., Beloit College; Rhodes Scholar at Oxford University; Summer courses, Chicago Musical College, Northwestern University School of Music; Graduate, American Institute of Normal Methods.

F  
A  
C  
U  
L  
T  
Y

HAZEL COATE ROSE

*Piano*

Pupil, William H. Sherwood. Glenn Dillard Gunn, Victor Heinze.



BETTY JANE SEHMANN

*Physical Education*

B.S., Texas State College for Women; M.A., Columbia University. Sponsor, T. C. Club, Senior-Middle Class.

KENNETH ROSE

*Head of Violin Department*

Pupil, McGibeny, Indianapolis; Arthur Hartman, Paris; George Lehmann, Berlin; Souky, Prague; Concert Master, Indianapolis Symphony Orchestra. Director, Orchestra.



MARY WYNNE SHACKELFORD

*Director, Department of Art*  
Graduate, Art Academy of Cincinnati; B.S., University of Cincinnati; Graduate, Pratt Institute, School of Fine and Applied Arts; B.F.A., School of Fine and Applied Arts, New York and Paris. Sponsor, Art Club.

BERTHA M. RUEF

*French*

B.A., M.A., Vassar College; Diplome de Professeur de Francais, Universite de Toulouse. Sponsor, French Club, F. F. Club.



MARY BELLE SMITH

*Specch*

B.A., Berea College; M.A., University of Iowa; further graduate study, University of North Carolina and Emerson College. Sponsor, Founders Hall.

LOUISE SAUNDERS

*Assistant Librarian*

Student, George Peabody College for Teachers. Sponsor, Ecowasin Club.



SUSAN S. SOUBY

*English*

B.S., M.A., George Peabody College for Teachers. Sponsor, Penstaff Club.

THEODORA COOLEY SCRUGGS

*English*

B.A., Wellesley College; M.A., Vanderbilt University; graduate study, Vanderbilt University.



AWARE STEINHART

*Home Economics*

A.B., Asbury College; graduate study, Syracuse University and Columbia University.

F  
A  
C  
U  
L  
T  
Y





NANCY LUNSFORD SUTHERLAND  
*Assistant in Art*

Diploma in Art, Ward-Belmont School; Certificate, Boothbay Studio; student, Frank Leonard Allen.



RUBY VAN HOOSER  
*Religion and Sociology  
First Semester*

B.A., Athens College; Graduate, Scarritt College for Christian Workers; Graduate Student, University of Chicago; M.A., Columbia University.  
Sponsor, Y. W. C. A.

AMELIA THRONE  
*Piano*

Pupil, Maurice Aronson, Vienna; Josef Lhevinne, Berlin; Sigismund Stojowski, New York; Harold Bauer, New York.



OLIVE WHITE  
*History*

B.S., North Texas State Teachers College; M.A., University of Texas.  
Sponsor, Del Vers Club.

JANICE TURNIPSEED  
*French*

B.A., Randolph-Macon; M.A., University of Alabama.



EVELYN WIDELL  
*Chemistry*

Graduate, Ward-Belmont School; B.A., Vanderbilt University.  
Sponsor, Junior-Middle Class.

ELIZABETH GRAY  
*Library Assistant  
First Semester*

Graduate of Ward-Belmont School.  
Sponsor, Ariston Club.



CATHERINE WINNIA  
*Acting Director, Department  
of Speech*

B.S., George Peabody College for Teachers; M.A., Columbia University; Director's and Teacher's Certificate, American Academy of Dramatic Art.

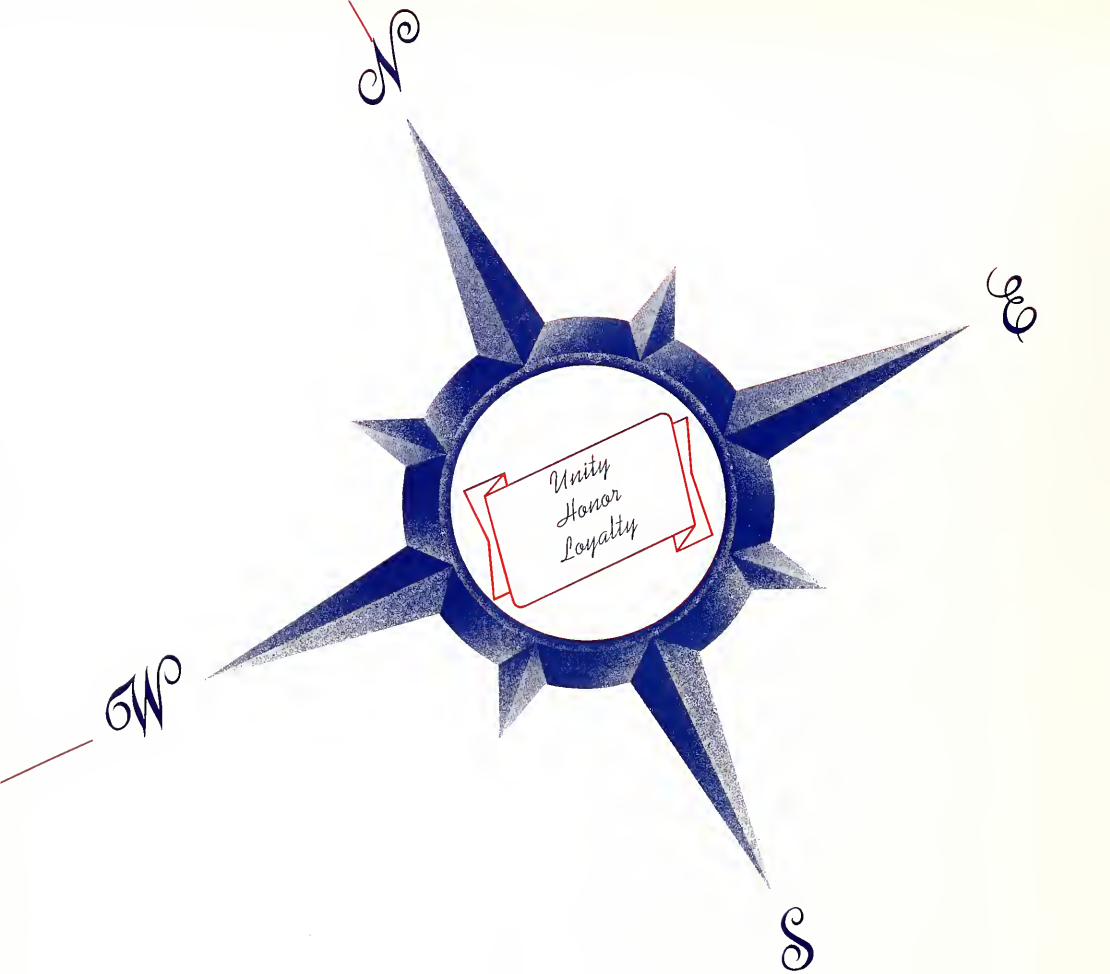
MRS. MARY CHARLTON  
*Personnel Department*



MISS BESS MURPHREE  
*Personnel Department*

F  
A  
C  
U  
L  
T  
Y





*from your*





c l a s s e s





# S E N I O R

MARTHA MOORE  
President, Senior Class



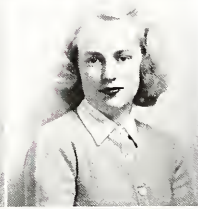
MOZELE ADAMS  
Madison, Tennessee  
Ariston  
General Diploma  
Speech Certificate

President, Ariston Club, '41; *Chimes* Staff, '41; Active Member of Athletic Association; Basketball Varsity, '41.

WAVER ADAMS  
Jacksonville Beach, Florida  
Tri K

Secretarial Certificate

Vice-President, Tri K Club, '41; Active Member of Athletic Association; Bowling Varsity, '41.



MARTHA ALLEN  
Nashville, Tennessee

Eccowasin  
Voice Diploma

Glee Club, '40, '41; Day Student Proctor, '40; German Club, '41; Vice-President, Day Student Council, '41.

EVELYN SHIRLEY ALLISON  
Agora

Piana Diploma

Secretary, Captivators, '40; Art Club, '40; Southern Belles, '40, '41; Symphony Orchestra, '40, '41; Glee Club, '41; Choir, '41; Music Club, '41; Leader, Captivators, '41; *Zephyr* Reporter, '41; President, Agora Club, '41.



CHARLOTTE ARMSTRONG  
Martel, Tennessee  
Penta Tau

General Diploma

Spanish Club, '40, '41; Active Member of Athletic Association; Sergeant at Arms, Penta Tau, '40; Treasurer, Penta Tau, First Semester, '41.

LUCILLE ASH  
Bastrop, Texas  
T. C.

Riding Certificate

Mathematics Club, '40; Archery Varsity, '40; Active Member of Athletic Association; Spanish Club, '40, '41; Captivators, '40, '41; Turf and Tanbark, '40, '41.



MARY EUPHAN BAUMAN  
Montreat, North Carolina  
X. L.

General Diploma

Sergeant at Arms, Senior-Middle Class, '40; Sergeant at Arms, X. L. Club, '40; Mathematics Club, '40; French Club, '40, '41; Baseball Varsity, '40; Swimming Varsity, '40; Track Varsity, '40; Hockey Varsity, '41; Basketball Varsity, '41; Athletic Association Board, '41; George Washington, '41; Business Manager, Milestones, '41.

MARY JANE BECKER  
St. Louis, Missouri  
X. L.

General Diploma

Art Certificate

Riding Certificate

Art Club, '40, '41; Turf and Tanbark, '40, '41; Vice-President, Art Club, '41; Secretary-Treasurer, Turf and Tanbark Club, '41.



WINIFREDE BELCHER  
Charleston, West Virginia  
Penta Tau

Art Club, '40, '41; Secretary, Penta Tau Club, '40.

MOLLY BELLAMY

Glee Club, '40; Spanish Club, '40, '41; Art Club, '41; Martha Washington, '41.

# C L A S S



M  
I  
L  
E  
S  
T  
O  
N  
E  
S  
★  
1  
9  
4  
1

MARY FRANCES CHARLTON  
*Vice-President, Senior Class*

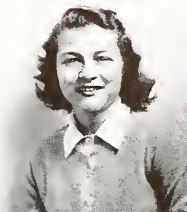
IRMA KATHERYN BIEL  
Corpus Christi, Texas  
T. C.

*General Diploma  
Speech Certificate*

Spanish Club, '40; Mathematics Club, '40; Y. W. C. A. Cabinet, '40; Glee Club, '40, '41; Secretary, Spanish Club, '41; President, T. C. Club, '41.

JEAN BLOOM  
Little Rock, Arkansas  
Anti-Pandora

Mathematics Club, '40; Assistant Photographic Editor, MILESTONES, '40; Captivators, '40, '41; Turf and Tanbark, '41.



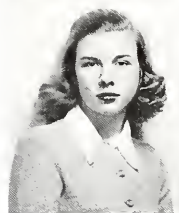
CAROL BRYANT  
Dearborn, Michigan  
Del Vers

*General Diploma  
Riding Certificate*

Swimming Varsity, '40; Turf and Tanbark, '40, '41; Active Member, Athletic Association; French Club, '41; Art Club, '41; Chapel Proctor, '41; Vice-President, Del Vers Club, '41; Athletic Association Board, '41.

SHIRLEY KATHERINE BURTON  
Alexandria, Louisiana  
T. C.

*General Diploma*  
Art Club, '40, '41; Glee Club, '41.



ETHEL BUTTERWECK  
Scarsdale, New York  
Tri K

*General Diploma  
Piano Certificate*

Hockey Varsity, '40, '41; Baseball Varsity, '40; Archery Varsity, '40; French Club, '40; Glee Club, '40; Basketball Varsity, '41; President, Athletic Association, '41.

MARtha LYNN CALDWELL  
Jackson, Tennessee  
A. K.

*General Diploma*  
Sergeant at Arms, A. K. Club, '41; Active Member, Athletic Association.



MARJORY TOM CHAMBERS  
Nashville, Tennessee  
Ariston

*General Diploma*

MARY FRANCES CHARLTON  
Nashville, Tennessee  
Angkor

*General Diploma*  
Day Student Treasurer, Senior-Middle Class, '40; Vice-President, Senior Class, '41; Bowling Varsity, '41; Active Member, Athletic Association.



CONNIE CLARK  
Beaumont, Texas  
Tri K

*General Diploma*

Mathematics Club, '40; Glee Club, '40; Track Varsity, '40; *Hyphen Staff*, '40, '41; Swimming Varsity, '40, '41; Active Member, Athletic Association; General Manager, Athletic Association, '41; French Club, '40, '41; Hockey Varsity, '41; Winner, Swimming Meet, '41.

MARY KATHERYN CLARK  
Webster Grove, Missouri  
Penta Tau

*General Diploma*  
German Club, '40; Mathematics Club, '40; Tennis Varsity, '40; Active Member, Athletic Association; Art Club, '41; Captivators, '41.





# SENIOR

KATHLEEN COFFEY  
Secretary, Senior Class

MARY AILEEN COCHRAN  
Lincoln, Nebraska  
X. L.

General Diploma

Art Club, '40; Swimming Varsity, '40; Active Member, Athletic Association; Secretary, Y. W. C. A., '40; *Hyphen* Reporter, '40; Editor, *Hyphen*, '41; Associate Editor, *Chimes*, '40, '41.



ELIZABETH CLELAND  
Williamstown, Massachusetts  
Agora

General Diploma

Captivators, '40; *Hyphen* Reporter, '40; Symphony Orchestra, '40; German Club, '40; President, German Club, '41; Glee Club, '41.



ANNA KATHLEEN COFFEY  
Orlando, Florida  
Tri K

General Diploma

Mathematics Club, '40; Secretary, Senior Class, '41; Secretary, Tri K, '41; Spanish Club, '41; Art Club, '41.

VIRGINIA ANNE COLLINS  
Nashville, Tennessee  
Eccowasin

General Diploma



BETTY B. COONEY  
Nashville, Tennessee  
Angkor

General Diploma

MARY VIRGINIA COTTEN  
Weatherford, Texas  
Anti-Pandora

General Diploma

Speech Certificate  
Glee Club, '40; Choir, '40; Mathematics Club, '40; News Editor, *Hyphen*, '40; Spanish Club, '40, '41; President, Anti-Pandora Club, '41.



JANE COTTOM  
Louisville, Kentucky  
Agora

General Diploma

Vice-President, Agora Club, '41; Sergeant at Arms, Senior Class, '41; Y. W. C. A. Cabinet, '41; Art Club, '41; Mathematics Club, '40.

MARY GENE CRAIN  
Nashville, Tennessee  
Triad

General Diploma

Violin Certificate  
String Quartet, '40; Spanish Club, '40, '41; Symphony Orchestra, '40, '41.



BETTY CURISS  
Nashville, Tennessee  
Eccowasin

General Diploma

French Club, '40, '41; President, Eccowasin Club, '41; Active Member of Athletic Association, '41; Hockey Varsity, '41; Day Student Representative, MILESTONES, '41.

DORRIS JUANITE DANIELS  
Ripley, Tennessee  
T. C.

General Diploma

Spanish Club, '40, '41; Mathematics Club, '40; Archery Varsity, '40; Glee Club, '40; Active Member of Athletic Association.



# CLASSES



M  
I  
L  
E  
S  
T  
O  
N  
E  
S  
\*  
1  
9  
4  
1

DOROTHY MCCRACKEN  
*Treasurer, Senior Class*



DOROTHY DORRIS  
Nashville, Tennessee  
Angkor  
*Art Certificate*

Art Club, '40, '41.

LAURA ADELINE DEMMER  
Columbia, South Carolina  
Del Vers

*General Diploma*

Spanish Club, '40, '41; Music Club, '40; Active Member of Athletic Association; Athletic Association Board, '40.



ALMA GEORGIA DUNFORD  
Clayton, Missouri  
Penta Tau

*General Diploma*  
*Art Certificate*

Glee Club, '40; *Chimes*, '40; Choir, '40; Art Club, '40, '41; President, Art Club, '41; President, Penta Tau Club, Second Semester, '41.

ROBERTA DORTCH  
Scott, Arkansas  
Tri K

*General Diploma*  
*Piano Certificate*

Associate Editor of MILESTONES, '40; Business Manager, MILESTONES, Second Semester, '40; Mathematics Club, '40; Glee Club, '40; French Club, '40, '41; Editor, MILESTONES, '41; Hockey Varsity, '41; Captivators, '40, '41.



ELVA DYER  
Bartley, West Virginia  
Tri K

*General Diploma*  
*Viola Certificate*

Symphony Orchestra, '40, '41; Captivators, '40, '41; Treasurer, Tri K Club, '41; President, Orchestra, '41; Southern Belles, '41; Secretary, Music Club, '41.

ELEANOR FAIN  
Leesburg, Florida  
Tri K



DOROTHY JEAN FITCHHORN  
Delaware, Ohio  
Osiron

*Secretarial Certificate*

Symphony Orchestra, '40, '41; Captivators, '40; Music Club, '40, '41.

BEVERLY JUNE FROMAN  
Kansas City, Missouri  
Tri K

*Art Certificate*

Glee Club, '40; Treasurer, Art Club, '41; Art Club, '40, '41; Art Co-Editor, MILESTONES, '41.

CATHERINE GROVER GAINES  
Georgetown, Kentucky  
Anti-Pandora

*General Diploma*

French Club, '40; Glee Club, '40, '41; Home Economics Club, '41.

RUTH GIVENS  
Trenton, Tennessee  
T. C.

*General Diploma*

German Club, '40; Glee Club, '40, '41; Home Economics Club, '41.





ALICE STOVALL  
Day Student Treasurer,  
Senior Class



DOROTHY GLICK  
Logan, West Virginia  
Del Vers

General Diploma  
Art Certificate  
French Club, '40; Art Club, '40, '41.



BETTY GABRIELL  
Bellefontaine, Ohio  
T. C.

Y. W. C. A. Cabinet, '41; Athletic  
Association Board, '41; Office Help,  
Hyphen, '41.



EDWINA M. GRAFF  
Mount Hope, West Virginia  
X. L.

General Diploma  
Hyphen Reporter, '40; Mathematics  
Club, '40; German Club, '40, '41;  
Secretary, Y. W. C. A., First Semes-  
ter, '40; Second Vice-President, Y.  
W. C. A., '41; Secretary, X. L., '41.



ELIZABETH CALDWELL GRAVES  
Nashville, Tennessee

Triad  
General Diploma  
French Club, '41; Hyphen Reporter,  
'41.



VIRGINIA LOVE GRAVES  
Nashville, Tennessee  
Eccowasin

General Diploma  
President, Eccowasin, '40; Tennis  
Varsity, '40, '41; Mathematics Club,  
'40; Hockey Varsity, '41; Active  
Member of Athletic Association;  
President, Day Student Council, '41.



GERALDINE GRAY  
Nashville, Tennessee  
Ariston

General Diploma



MARTHA JEROLYN GRISSIM  
Nashville, Tennessee  
Triad

General Diploma  
Home Economics Club, '41.



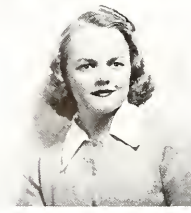
PAULINE ELIZABETH GRISSO  
Seminole, Oklahoma  
Anti-Pandora

General Diploma  
Mathematics Club, '40; French Club,  
'40, '41; Chimes Staff, '40, '41; Sec-  
retary, Boarding Student Council,  
'41; Hyphen Reporter, '41.



NANCY MARIE GUNN  
Nashville, Tennessee  
Triad

General Diploma  
Secretary - Treasurer, Mathematics  
Club, '40; French Club, '40, '41;  
President, Triad Club, '41.



MARGARET ANN HALEY  
Nashville, Tennessee  
Triad

General Diploma  
Treasurer, Triad Club, '40; Secre-  
tary, Triad Club, Second Semester,  
'40; Mathematics Club, '40; French  
Club, '40; Day Student Editor,  
MILESTONES, '41.

# CLASSES



M  
I  
L  
E  
S  
T  
O  
N  
E  
S  
\*  
1  
9  
4  
1



JANE COTTOM  
*Sergeant at Arms, Senior Class*



ALICE LEWIS HARTON  
Tullahoma, Tennessee  
Agora  
*General Diploma*

Mathematics Club, '40; Art Club, '40; French Club, '40; Basketball Varsity, '40; Tennis Varsity, '41; Hockey Varsity, '41; Treasurer, Athletic Association, '41; Secretary, Y. W. C. A., '41.

MARJORIE ANN HALEY  
Albany, Georgia  
Osiron  
*Riding Certificate*  
Spanish Club, '40, '41; Turf and Tanbark, '41.

MARY ELIZABETH HENLEY  
Nashville, Tennessee  
Ariston  
*General Diploma*  
Home Economics Club, '40; Mathematics Club, '40; Archery Varsity, '40; Athletic Association Board, '40.

LUCERNE HEROLD  
Anthony, Kansas  
F. F.  
*General Diploma*  
French Club, '41.



DOROTHY HILL  
Knoxville, Tennessee  
X. L.  
Home Economics Club, '41.

RUTH HORTON  
Morristown, Tennessee  
Penta Tau  
*Art Certificate*  
Art Club, '40, '41.



BETTY JEAN HOWELL  
Eldorado, Arkansas  
Anti-Pandora  
*Public School Music Diploma*  
Choir, '40, '41; Glee Club, '40; President, Glee Club, '41; Vice-President, Anti-Pandora, '41.

BETSY ANN HUMPHRIES  
Delaware, Ohio  
Osiron  
*Dance Diploma*  
Glee Club, '40, '41; Choir, '40, '41; Sergeant at Arms, Osiron Club, '41.



LOUISE HELEN JAHNCKE  
New Orleans, Louisiana  
F. F.  
*Dance Diploma*  
Hockey Varsity, '40; Swimming Varsity, '40; Music Club, '41; Art Club, '41; Home Economics, '41; President, F. F. Club, '41; Active Member of Athletic Association.

GERALDINE JOHNSON  
Nashville, Tennessee  
Ariston  
*General Diploma*  
Glee Club, '40; Mathematics Club, '40; Spanish Club, '40, '41.







# S E N I O R

MISS LINDA RHEA  
*Sponsor, Senior Class*



PATRICIA JOHNSON  
Cedar Falls, Iowa  
Del Vers

*General Diploma*  
Feature Editor, MILESTONES, '40, '41; Feature Editor, *Hyphen*, '40, '41; Bowling Narsity, '40; Active Member of Athletic Association; President, Del Vers Club, '41.

ELIZABETH LUCILLE JONES  
Nashville, Tennessee  
Ariston  
*General Diploma*



PHYLLIS JEAN JOFF  
Flint, Michigan  
Penta Tau

*General Diploma*  
*Speech Certificate*  
Mathematics Club, '40; Spanish Club, '40, '41; Glee Club, '41.

ERMINA KATHRYN KENT  
Nashville, Tennessee  
Eccowasin  
*General Diploma*

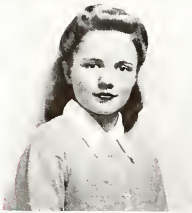


MILDRED KING  
Nashville, Tennessee  
Triad

*General Diploma*  
Spanish Club, '40.

MARY KIRKLIN  
Rochester, Minnesota  
Del Vers

*General Diploma*  
Sergeant at Arms, Del Vers Club, '40; Y. W. C. A. Cabinet, '40; Proctor, Filicity, '40; Vice-President, Student Council, '41; Treasurer, Del Vers Club, '41.



MARY ELIZABETH KNEPP  
Bay City, Michigan  
Del Vers

*General Diploma*  
Spanish Club, '40, '41; President, Spanish Club, '41; Mathematics Club, '40; Art Club, '40, '41; Secretary, Art Club, '41; Art Co-Editor, MILESTONES, '41.

NANCY JANE LANDIS  
Nashville, Tennessee  
Ariston

*General Diploma*  
*Art Certificate*  
Art Club, '40, '41.



NANCY DOUGLAS LASSETER  
Nashville, Tennessee  
Angkor

*General Diploma*  
Mathematics Club, '40.

LOUISE TRENHOLM LORD  
Woodberry Forest, Virginia  
Del Vers

Glee Club, '40, '41; Choir, '40, '41; Home Economics Club, '40, '41.

# CLASSES



M  
I  
L  
L  
E  
S  
T  
O  
N  
E  
S  
\*  
I  
9  
4  
I

*Senior Cheerleaders*

DORIS MAY McCALLAM  
Fort Sam Houston, Texas  
T. C.

*General Diploma*  
Home Economics Club, '40, '41;  
Y. W. C. A. Cabinet, '40.

DOROTHY McCracken  
Pulaski, Tennessee  
X. L.

*General Diploma*  
Spanish Club, '41; Treasurer, Senior  
Class, '41.



SARA ELIZABETH McCULLOUGH  
Nashville, Tennessee

*Eccowasin*  
*General Diploma*  
Baseball Varsity, '40; Athletic As-  
sociation Board, '41.

LUCILE McDUFFIE  
Columbus, Georgia  
Tri K

*General Diploma*  
*Riding Certificate*  
French Club, '40, '41; Turf and  
Tanbark, '40, '41; President, Turf  
and Tanbark, '41.



MARY ELIZABETH MASENGILL  
Johnson City, Tennessee  
X. L.

*General Diploma*  
*Speech Certificate*  
Treasurer, Senior-Middle Class, '40;  
Proctor, Hall Hall, '40; Y. W. C. A.  
Cabinet, First Semester, '40; Art  
Club, '40; Spanish Club, '40, '41;  
President, X. L. Club, '41.



JEAN BRANCH MANEY  
Nashville, Tennessee  
Ariston

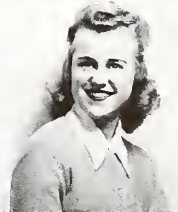
*General Diploma*

HELEN MITCHELL  
Houston, Texas  
A. K.

*Voice Certificate*  
Glee Club, '40, '41; Choir, '40, '41;  
Music Club, '41; Treasurer, A. K.,  
First Semester, '41; President, A.  
K., Second Semester, '41; Active  
Member of Athletic Association.

MARTHA ANNA MOORE  
Chillicothe, Missouri  
Tri K

*General Diploma*  
Y. W. C. A. Cabinet, '40, *Hyphen*  
*Reporter*, '40, '41; *Symphony Orchi-*  
*estra*, '40, '41; *Captivators*, '40, '41;  
French Club, '40, '41; *Archery*  
Varsity, '40; *Athletic Association*  
Board, '41; *Southern Belles*, '41;  
President, Senior Class, '41.



JANE THERESE MORLEY  
Three Rivers, Michigan  
Agora

*Voice Diploma*  
Choir, '40, '41; Glee Club, '40, '41;  
Treasurer, Agora Club, '41; Y. W.  
C. A. Cabinet, '41; German Club,  
'41; President, Music Club, '41.

JESSIE OSMENT  
Nashville, Tennessee  
Ariston

*General Diploma*  
Mathematics Club, '40; Secretary,  
Ariston Club, '40; French Club, '40;  
*Chimes Staff*, '40; Editor, *Chimes*,  
'41.





# SENIOR

CHRISTINA PROVINÉ  
Mascot, Senior Class



JOSEPHINE PARDUE  
Nashville, Tennessee  
Ariston

*Music Diploma*  
German Club, '41; Secretary, Sym-  
phony Orchestra, '41.

ST. CLAIR PEERY  
Tazewell, Virginia  
Anti-Pandora

*General Diploma*  
*Piano Certificate*  
Glee Club, '41; Treasurer, Anti-  
Pandora Club, '41; Proctor, Senior  
Hall, '41; French Club, '40, '41;  
Mathematics Club, '40.



MADGE PHILLIPS  
Detroit, Michigan  
Tri K

MARGARET ANN PLUMMER  
Rochester, Minnesota  
Del Vers

*General Diploma*  
Y. W. C. A. Cabinet, '41; Vice-  
President, Athletic Association, '41.



JEAN MARIA POTTER  
Nashville, Tennessee  
Triad  
*General Diploma*

BETTY QUARLES  
Nashville, Tennessee  
Eccowasin



CARLENE VIRGINIA RICE  
Kansas City, Kansas  
X. L.  
*General Diploma*

NELL ROCKETT  
Clanton, Alabama  
F. F.  
*General Diploma*

Secretary, Senior-Middle Class, '40;  
*Hyphen* Reporter, '40; Y. W. C. A.  
Cabinet, '40, '41; Vice-President,  
X. L. Club, '41; Copy Editor,  
*Hyphen*, '41.

Vice-President, F. F. Club, '40, '41;  
Vice-President, French Club, '41;  
Glee Club, '41; Home Economics  
Club, '41; Art Club, '41; Y. W. C.  
A. Cabinet, '41.



ANN SHERBURNE ROLFE  
Fort Sill, Oklahoma  
T. C.  
*General Diploma*

JEANE ROLFE  
Nashville, Tennessee  
Ariston  
*General Diploma*

Glee Club, '40; Second Vice-Presi-  
dent, Student Council, '40; Spanish  
Club, '40; Copy Editor, *Hyphen*,  
'40; Baseball Varsity, '40; Hockey  
Varsity, '41; President, Boarding  
Student Council, '41.



# CLASSES



M  
I  
D  
D  
L  
E  
S  
T  
O  
N  
E  
S  
\*  
I  
9  
4  
I

MRS. MINNIE POWELL  
Hostess, Senior Hall

JAN WALDEN SALISBURY  
Minneapolis, Minnesota  
Del Vers

General Diploma  
Speech Certificate

Secretary, Del Vers Club, '40;  
Treasurer, Del Vers, First Semester,  
'40; Tennis Varsity, '41; Hockey  
Varsity, '41; Art Club, '41; Active  
Member of Athletic Association.

PENELOPE SHAW  
Ann Arbor, Michigan  
Penta Tau

General Diploma

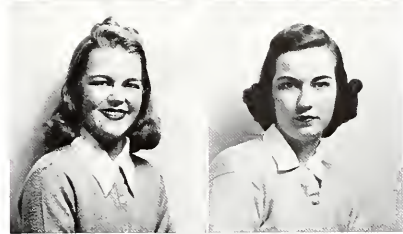
Art Club, '40; Home Economics  
Club, '40; Proctor, Fidelity Hall,  
First Semester, '40; Student Council,  
'40; Glee Club, '41.



MARTHA ELIZABETH SMITH  
Clarksville, Tennessee  
Penta Tau

ELLEN HENDERSON SPANGLER  
Troy, Alabama  
Agora

Secretarial Certificate



JOSEPHINE SPARKS  
Corpus Christi, Texas  
T. C.

General Diploma  
Speech Certificate

President, Senior-Middle Class, '40;  
Mathematics Club, '40, '41; French  
Club, '40, '41; Track Varsity, '40;  
Hockey Varsity, '41; Y. W. C. A.  
Cabinet, '40; Art Club, '40; Asso-  
ciate Editor, *Hopfen*, '41; Vice-  
President, T. C. Club, '41.

SUSAN JANE STEENBURG  
Aurora, Nebraska  
A. K.

Glee Club, '41.



DOROTHY MAE STEGMEIR  
Nashville, Tennessee  
Triad

General Diploma

Home Economics Club, '40; Spanish  
Club, '41.

DOROTHY STEPHANY  
Baltimore, Maryland  
F. F.

General Diploma

French Club, '41.



ALICE CHRISTINE STOVALL  
Nashville, Tennessee  
Angkor

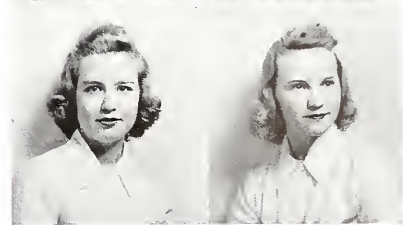
General Diploma

French Club, '40, '41; Day Student  
Council, '40, '41; Day Student  
Treasurer, Senior Class, '41.

SARAH THOMAS  
Sylacauga, Alabama  
F. F.

General Diploma

Spanish Club, '40; Student Council,  
First Semester, '41; Home Eco-  
nomics Club, '41; Y. W. C. A.  
Cabinet, '41; Active Member of  
Athletic Association.





# SENIORS

## Senior Hall



VIRGINIA THOMISON  
Athens, Tennessee  
Tri K

Member, Student Council, '40;  
President, Tri K Club, '41; French  
Club, '41; Basketball Varsity, '41;  
Active Member of Athletic Associa-  
tion.

MURIEL ELAINE VINCENT  
Nashville, Tennessee

Ariston  
*General Diploma*  
French Club, '41; Ariston, Sergeant  
at Arms, '41.



JANET DOROTHY VOEHL  
Jackson, Tennessee  
A. K.

*Art Certificate*  
Art Club, '40, '41; French Club,  
'40; Glee Club, '40; President, A. K.  
Club, First Semester, '41.

FRANCES JANE VOIGT  
Kirkwood, Missouri  
Penta Tau

*General Diploma*  
Glee Club, '40; Choir, '40; Art  
Club, '41; Spanish Club, '41.



PHYLLIS VOORHIES  
Youngstown, Ohio  
Penta Tau

*General Diploma*  
*Home Economics Diploma*  
Spanish Club, '40; Home Economics  
Club, '40, '41; Vice President,  
Penta Tau Club, '41; Y. W. C. A.  
Cabinet, '41; Turf and Tanbark,  
'41.

NANCY SUE WAGGENER  
Nashville, Tennessee  
Angkor

*General Diploma*



FRANCES HARRIETT WHEELER  
Gainesville, Georgia  
Agora

Y. W. C. A. Cabinet, '40; French  
Club, '40; Glee Club, '40, '41.

MARIE DIANE WINNIA  
San Francisco, California  
Angkor

*General Diploma*  
*Speech Certificate*  
Associate Editor, *Chimes*, '40; Busi-  
ness Manager, *Chimes*, '41.



PEGGY WRIGHT  
Nashville, Tennessee  
Angkor

*General Diploma*  
Vice-President, Angkor, '40; Presi-  
dent, Angkor, '41.

NANCY HARREL YOUNG  
Morganfield, Kentucky  
Angkor

*Home Economics Diploma*  
Secretary, Agora Club, '40; Y. W.  
C. A. Cabinet, '40; President, Home  
Economics Club, '40; Cadivators,  
'40, '41; President, Y. W. C. A.,  
'41; Secretary, Music Club, '41.

**T**HE FORLORN INDIVIDUALS searching fruitlessly for Middlemarch within the confines of Club Village last September 18 have this year proved themselves an outstanding Senior-Middle class both socially and scholastically.

Such transformation was due to class activities as a whole and also to leaders such as Margery Wilson who relinquished her position as temporary president to attractive Dale Jellison with Ann Harrison and Ruth Whittlesey as vice-presidents. Maryjo Meacham, tall, bland, and blonde, was elected secretary, and Kitty Felton, drawl and all, was first semester treasurer, with Nancy Awtrey filling the post second semester. Alice Hargis, day student treasurer, and Dot Powell, sergeant at arms, completed the roster of a regiment of history makers for 1940-1941. Under the supervision of "Miss Tillie" Sehmman the purple and white showed itself born to such majestic decorations by beating a confident Senior team in bowling and in many a scholastic event on campus.

Main events stood out like Pat Fry's freckles throughout the Senior-Middle year. Big day number one was the Sunday afternoon coffee in honor of upper-class mates. At a beautifully arranged and filled table the college freshmen presided to repay Seniors for their "big sister" attitude to Ward-Belmont novices. Big night number one was the supper dance when formals were carefully pressed, hair curled in shining waves, and lipstick artfully applied for the class affair of the year.

Now the year has passed, leaving behind an indelible trail of memories of the ideals for which their school stands and for which they are prepared to live and die as the class of 1942.

# SENIOR - MIDDLE CLASSES



MISS BETTY JANE SEHMANN  
*Sponsor, Senior-Middle Class*



*Back row, left to right—HARRISON, JELLISON, WHITTLESEY  
Front row—POWELL, HARGIS, MEACHAM, AWTREY*





# JUNIOR - MIDDLE

CAROLYN GWALTNEY  
*President, Junior-Middle Class*



PATRICIA ANNE ANDERSON  
Nashville, Tennessee  
Ariston  
*High School Certificate*

MARGARET ELIZABETH  
ARRUCKLE  
Philadelphia, Pennsylvania  
A. K.  
*High School Certificate*

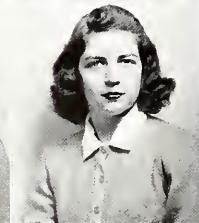


LOIS JOAN BAUM  
Green Bay, Wisconsin  
Osiron  
*High School Certificate*

MARY LANE BELL  
Nashville, Tennessee  
Ariston  
*High School Certificate*

Vice-President of High School Student Council, '41; High School Representative, Art Club, '40; Treasurer of Osiron Club, '41; French Club, '40; Active Member of Athletic Association.

Sergeant at Arms of Ariston Club, '39; Secretary and Treasurer of Latin Club, '39; President of Beta Club, '41; Secretary of Day Student Council, '41; Hockey Varsity, '41; Active Member of Athletic Association.



ROBERTA BRANDON  
Nashville, Tennessee  
Triad  
*High School Certificate*

OLIVIA CATHLEEN CHILTON  
Nashville, Tennessee  
Triad  
*High School Certificate*

Sergeant at Arms of Freshman Class, '38; Treasurer of Sophomore Class, '39; Vice-President of Triad Club, '41; Penstaff Club, '41; Latin Club, '40; Beta Club, '41; Hockey Varsity, '41; Basketball Varsity, '39, '40; Active Member of Athletic Association.

Spanish Club, '38, '39, '40; Bowling Varsity, '40; Basketball Varsity, '40; Active Member of Athletic Association.



MARGARET ANNE CORE  
Nashville, Tennessee  
Ariston  
*High School Certificate*

RUTH CARR CREASON  
Mayfield, Kentucky  
Osiron  
*High School Certificate*



GERALDINE LOUISE DAVISON  
Bloomfield Hills, Michigan  
T. C.  
*High School Certificate*

MARY CATHERINE DAWSON  
Dalhart, Texas  
Penta Tau  
*High School Certificate*

President of Boarding Student Council, First and Second Semester, '41; Chapel Proctor, '40; Beta Club, '41; French Club, '40; Bowling Varsity, '40; Active Member of Athletic Association.

# CLASSES



M  
I  
L  
E  
S  
T  
O  
N  
E  
S  
\*  
1  
9  
4  
1

ANN ELIZABETH MCCARLEY  
*Vice-President, Junior-Middle Class*

PHOEBE DOUGLASS  
Nashville, Tennessee  
Eccowasin  
*High School Certificate*

Swimming Varsity, '39; President of Freshman Class, '38; Active Member of Athletic Association.

MARGERIE ANN EICHENLAUB  
Atlanta, Georgia  
Penta Tau

*High School Certificate*  
Art Club, '41; Active Member of Athletic Association, '41.



NANCY JEAN FISCHER  
Green Bay, Wisconsin  
Penta Tau

*High School Certificate Riding Certificate*

First Semester Chapel Representative, '41; Vesper Chairman, Penta Tau Club, '41; Art Club, '40, '41; French Club, '41; Tart and Tanager, '40, '41; Beta Club, '41; Photographic Co-Editor of MILESTONES.

JUNE ELIZABETH GARLAND  
Crystal Springs, Mississippi  
Osiron

*High School Certificate*



HARRIET VIRGINIA GENTRY  
Jackson, Michigan  
Osiron

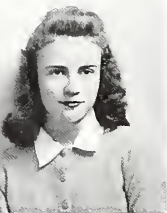
*High School Certificate*

Treasurer of Junior Class, '40; Treasurer of Student Council, First Semester, '41; Beta Club, '40, '41; French Club, '40, '41.

JOAN GRUEB  
Janesville, Wisconsin  
Osiron

*High School Certificate*

French Club, '41; High School Student Council, Secretary, Second Semester, '41; Glee Club, '40; Active Member of Athletic Association.



ERMIN VIRGINIA GUTHRIE  
Shelbyville, Kentucky  
Osiron

*High School Certificate*

Proctor of Heron Hall, First Semester, '41; High School Representative of Y. W. C. A., '40; Hockey Varsity, '40, '41; Basketball Varsity, '40, '41; Baseball Varsity, '40; Art Club, '40, '41; Manager of Basketball, Hockey, Baseball, Bowling, Tennis, and Archery Teams, '40, '41; Active Member of Athletic Association.

MARY CAROLYN GWALTNEY  
Osceola, Arkansas  
T. C.

*High School Certificate*

President of Senior Class, '41; Vice-President of Beta Club, '40; Archery Varsity, '39; French Club, '40, '41; Latin Club, '39, '40; Glee Club, '40; Penstaff, '41; Captivators, '40; Active Member of Athletic Association.



JOYCE HARPER  
La Oroya, Peru  
T. C.

*High School Certificate*

Secretary of T. C. Club, '41; Beta Club, '40, '41; French Club, '40, '41; Penstaff, '40, '41; Hockey Varsity, '41; High School Representative of MILESTONES; Active Member of Athletic Association.

NANCY REBECCA HILL  
Nashville, Tennessee  
Angkor

*High School Certificate*  
Secretary of Junior Class, '40; Sergeant at Arms, Angkor Club, '41.





# JUNIOR - MIDDLE

MARY STUART KELLOGG  
BETTY WASHINGTON  
*Treasurer, Secretary, Junior-Middle Class*



LADY RUTH HOLCOMB  
Nashville, Tennessee  
Angkor  
*High School Certificate*  
Latin Club, '38, '39; Basketball Varsity, '40; Hockey Varsity, '41; Assistant General Manager of Athletic Association, '41; Active Member of Athletic Association.

JANE HOLLEY  
Charleston, West Virginia  
Del Vers  
*High School Certificate*  
Spanish Club, '39; Chapel Representative of Student Council, '39; Art Club, '41.



BESS FRANCES HUNT  
Nashville, Tennessee  
Eccowasin  
*High School Certificate*  
Latin Club, '39; Spanish Club, '41; Hockey Varsity, '39; Basketball Varsity, '40, '41; Active Member of Athletic Association.

LORRAINE HYDE  
Connersville, Indiana  
Osiron  
Art Club, '40; French Club, '41.



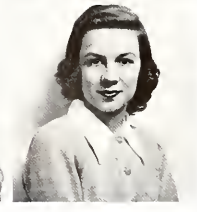
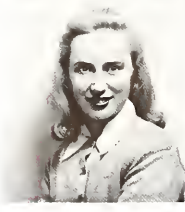
JACQUELINE TRAIL E JACKSON  
Franklin, Tennessee  
Eccowasin  
*High School Certificate*  
Beta Club, '41; Active Member of Athletic Association.

IRENE JOSEPH  
Houston, Texas  
Osiron



SARA JANE JUDD  
Dalton, Georgia  
Penta Tau  
*High School Certificate*  
Glee Club, '40, '41; Treasurer of Penta Tau Club, '41.

DOROTHY KAUFFMAN  
Leesburg, Florida  
Penta Tau  
*High School Certificate*  
Archery Varsity, '40; Glee Club, '40; French Club, '41; Tart and Tanbark, '41; Beta Club, '41; Active Member of Athletic Association.



MARY STUART KELLOGG  
Monroe, Louisiana  
Del Vers  
*High School Certificate*  
French Club, '41; Treasurer of Junior Class, '41.

MARY JANE LAWRENCE  
Nashville, Tennessee  
Angkor  
*High School Certificate*  
Art Club, '40; French Club, '41.

# CLASSES



M  
I  
L  
L  
E  
S  
T  
O  
N  
E  
S  
\*  
1  
9  
4  
1

MISS MARY ELIZABETH CAYCE  
*Sponsor, Junior-Middle Class*

JUNE PEARCE LEHAN  
Avonmore, Pennsylvania  
Osoron

*High School Certificate*

Manager of Bowling Team, '40;  
Latin Club, '39; Glee Club, '40;  
Spanish Club, '40.

DONNA A. LESLIE  
Shaker Heights, Ohio  
Penta Tau

Baseball Varsity, '40; Active Mem-  
ber of Athletic Association, '40.



MARILYN JEANETTE LOOKADOO  
Arkadelphia, Arkansas  
T. C.

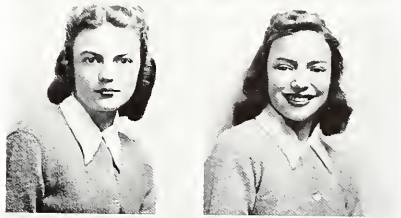
*High School Certificate*

President of Sophomore Class, '39;  
Spanish Club, '38, '39, '40; Art Club,  
'38, '39, '40; Hockey Varsity, '38,  
'39, '40; High School Representa-  
tive of Y. W. C. A., '41; Active  
Member of Athletic Association.

ANN ELIZABETH MCCARLEY  
Nashville, Tennessee  
Ariston

*High School Certificate*

Treasurer, Freshman Class, '38;  
Secretary, Sophomore Class, '39; Art  
Club, '39; Hockey Varsity, '39, '40,  
'41; Basketball Varsity, '39; '40,  
'41; Member of Athletic Association,  
'41; Beta Club, '40, '41; Secretary  
of Latin Club, '40; Vice President  
of Ariston Club, '41; Vice President  
of Senior Class, '41; Penstaff Club,  
'39, '40, '41.



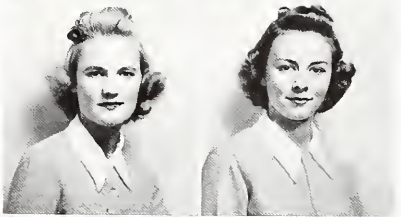
MARY LOU McCLANAHAN  
Lawrence, Kansas  
Osoron

*High School Certificate*

SARAH LOUISE MAYFIELD  
Athens, Tennessee  
Penta Tau

*High School Certificate*

Basketball Varsity, '41; Active Mem-  
ber of Athletic Association.



MARTHA MITCHELL  
Nashville, Tennessee  
Ariston

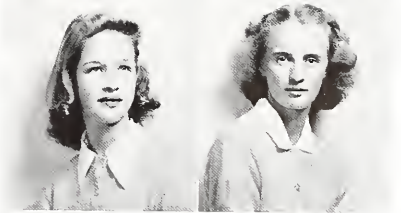
*High School Certificate*

Penstaff Club, '40, '41; Secretary,  
Penstaff Club, '41; Beta Club, '41.

MARION RUTH MULVENA  
Alpena, Michigan  
X. L.

*High School Certificate*

Art Club, '40, '41; *Hyphen*, '40, '41.



ROSE LUCILE PALMER  
Sheffield, Alabama  
T. C.

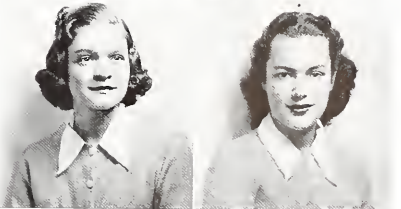
*High School Certificate*

Vice-President of Freshman Class,  
'38; Art Club, '38, '39, '40, '41;  
Spanish Club, '40, '41; Latin Club,  
'40.

HELEN LEONE PATY  
Shanghai, China  
Ariston

*High School Certificate*

French Club, '41.







PATRICIA WINFIELD PROCTOR  
Nashville, Tennessee  
Angkor  
*High School Certificate*  
Penstaff Club, '38, '39, '40, '41; President of Latin Club, '40; Sergeant at Arms of Angkor Club, '41; Varsity in Archery, '38, '39, '40; Art Club, '40; Secretary of French Club, '41; Beta Club, '40, '41; Active Member of Athletic Association.

MARGUERITE REAGAN  
Sunbright, Tennessee  
Osiron  
*High School Certificate*  
Glee Club, '40, '41; Spanish Club, '40, '41.



MARTHA CORNELIA RICHARDS  
Nashville, Tennessee  
Eccowasin  
*High School Certificate*

HELEN HARE RICHARDSON  
Jacksonville, Florida  
Anti-Pandora  
*High School Certificate*



MARGARET SANGREE  
Nashville, Tennessee  
Eccowasin  
*High School Certificate*  
French Club, '41; Penstaff Club, '38, '39, '40, '41; President of Penstaff Club, '41; Beta Club, '41.

AILEEN SILVERMAN  
Dayton, Ohio  
Agora  
*High School Certificate*  
Art Club, '40, '41; Glee Club, '40, '41.



MARY ELIZABETH WALKER  
Franklin, Tennessee  
Triad  
*High School Certificate*  
Latin Club, '39; President of Junior Class, '40; Beta Club, '40, '41; Vice-President of Beta Club, '41.

BETTY WASHINGTON  
Cedar Hill, Tennessee  
Angkor  
*High School Certificate*  
Secretary of Senior Class, '41; Life-saving, '41.



BERNICE WEINGARTEN  
Houston, Texas  
F. F.  
*High School Certificate*  
Spanish Club, '40, '41.

PEGGY WEMYSS  
Nashville, Tennessee  
Angkor  
*High School Certificate*  
Treasurer of Angkor Club, '41; Archery Varsity, '41; Latin Club, '40; Active Member of Athletic Association.



MARY THAYER WILSON  
Gordonsville, Tennessee  
Osiron  
*High School Certificate*  
Glee Club, '40; French Club, '40, '41; Art Club, '40, '41; Vice-President of Junior Class, '40; Active Member of Athletic Association.

ELIZABETH BUFORD WOODCOCK  
Nashville, Tennessee  
Angkor  
*High School Certificate*  
Penstaff Club, '40, '41; Beta Club, '40, '41; Art Club, '40; Active Member of Athletic Association.

# FRESHMAN, SOPHOMORE, and JUNIOR CLASSES

The preparatory school resides over in Heron Hall and each girl does her own particular bit to make the undergraduates shine.

Under the direction of Miss Widell the Junior class struck a new high this year. Sarah Polk Dallas with her "personality-plus-brain" character served the class as its president. Becky Watson and Miss Crockett were president and sponsor of the Sophomore class. Each helping the other, and the class helping both, the Sophomores went smiling through the year. Patty Greenwood, the younger half of the Greenwood twosome, helped the "youngest class" show their upperclassmen that there's nothing to this "green freshman" talk that you hear. Miss Jacobs was sponsor and advisor for the class.

The preparatory school holds a place all its own in the campus life at Ward-Belmont. Graduation is a great day, but the significance of it lies in those years before that give you that something that can only be found at Ward-Belmont.



JUNIOR CLASS OFFICERS

*Standing*—LEILA DOUGLAS, MARY EAGLE  
*Seated*—BETTY JO WARDEN, SARAH POLK DALLAS



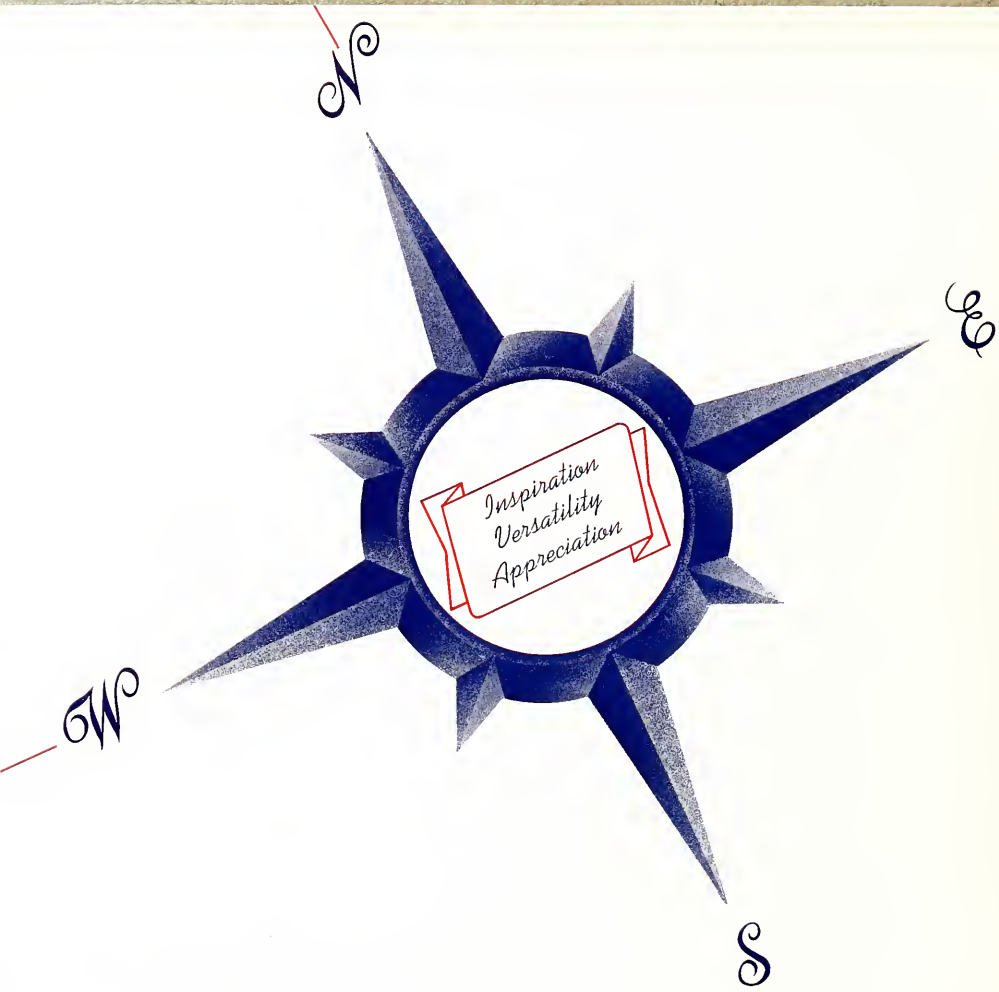
FRESHMAN CLASS OFFICERS

ELIZABETH CLEVELAND, EMMIE JACKSON,  
PATTY GREENWOOD



SOPHOMORE CLASS OFFICERS

ZARA PRICHETT, BECKY WATSON, BETTY JOHNSON,  
BARBARA GREENWOOD



*from your*

\* \* \* \* \*

**a c**



t i v i t i e s



# BOARDING STUDENT COUNCIL



*Standing, left to right—LANGE, WILSON, TARBET, M. L. THOMAS, HAGGARD  
Seated, left to right—GRISSO, FRY, SCHWARTZ, LECKE, PEERY, BRYANT, S. THOMAS, KIRKLIN, ROLFE (president)*

The privilege of self-government has been accorded Ward-Belmont students by a farsighted faculty who saw clearly the spirit in which justice is meted out by student to student. It is no easy task nor yet a hollow honor to campus administrative leaders who serve on the council. Taking their duty as seriously as it is met by penitent offenders, the young judges issue decisions stabilized by the approval of the school advisory board.

As the trembling lawbreaker seats herself before the council, which meets each Tuesday evening, she realizes that its purpose is not punishment but regulation, not reproof but honor and respect for the standards of her school. The organization, composed of especially elected officers and proctors for both semesters, fills an otherwise gaping hole in school life. Its girls are among the peppiest, most popular on campus, and it yearly sponsors a gym dance as proof of its management ability.



ANN ROLFE  
*President, Boarding Student Council*

## OFFICERS

President.....	ANN ROLFE
First Vice-President.....	MARY KIRKLIN
Second Vice-President.....	MARGERY WILSON
Secretary.....	PAULINE GRISSO

### First Semester Proctors

Senior Hall.....	SARAH THOMAS
Hail Hall.....	ANNETTE LANGE
Fidelity Hall.....	ANNETTE TARBET
Founders Hall.....	PATRICIA FRY
Chapel.....	CAROL BRYANT

### Second Semester Proctors

Senior Hall.....	ST. CLAIR PEERY
Hail Hall.....	ETHEL MARY SCHWARTZ
Fidelity Hall.....	PAULA LECKE
Founders Hall.....	MARGIE LOU THOMAS
Chapel.....	BARBARA HAGGARD

# DAY STUDENT COUNCIL



Left to right—DAVIS, BELL, DAVISON, GRAVES (president) ALLEN, THOMPSON, WOODWARD

Tuesday at 12:30 may not mean anything to anyone but a group of some seven Ward-Belmont day students who meet each week at that time to hash and rehash the weekly undoings of their day student schoolmates. Headed by Virginia Love Graves, as just as she is capable, the council this year served its school as efficiently as always.

Everything from demerits to majors falls within the scope and watchful eyes of the councilors who dispense justice with the spirit in which it is received. Members

are chosen by the day student body as representative of themselves, and their choice is eloquent. Take, for example, Martha Allen, kindly and generous; Jane Woodward, truly popular and clever; Mary Lane Bell, sincere and earnest. All members work toward a common goal: the building up and maintenance of high standards of conduct for Ward-Belmont's day students. So far they have been amazingly successful.

## OFFICERS

President-----	VIRGINIA LOVE GRAVES
First Vice-President-----	MARTHA ALLEN
Second Vice-President-----	JANE WOODWARD
Secretary-----	MARY LANE BELL
High School Representative-----	EDITH DAVIS
Proctor, First Semester-----	PEGGY DAVISON
Proctor, Second Semester-----	ALICE THOMPSON



VIRGINIA LOVE GRAVES  
President, Day Student Council

# PREPARATORY SCHOOL COUNCIL



Standing, left to right—WARDEN, GRUBB, HOOD  
 Seated, left to right—GUTHRIE, GENTRY, FISCHER, UHL, BAUM, DAWSON (president), LAMBERT

Like its two sister organizations, the boarding and day student councils, the preparatory school council is a shining example of functioning democracy. Prep school misdemeanors find their way, eventually, to the council calendar where they are later handled in the weekly meetings with the greatest of finesse. For, besides being a training ground of the class A variety for wise decisions in later

life, the prep school council also gives young students confidence and satisfaction in their own government.

The weekly report of the group passes into the hands of a special advisory board and back again in approved form for posting in Heron Hall. Here the notice is read and reread by the girls who realize that the decision represents the opinion of their classmates and is therefore beyond reproach.

## OFFICERS

President.....	MARY DAWSON
Vice-President and Secretary.....	JOAN GRUBB
Treasurer.....	HARRIET GENTRY
Chapel Representative.....	NANCY FISCHER
Underclass Representative.....	BETTY LOU UHL
Proctor.....	ERMIN GUTHRIE
Sponsor.....	MISS CATHERINE E. MORRISON



MARY DAWSON  
 President, Preparatory School Council





Left to right—PETERSON, SCHWARTZ, HAMILTON, GRAFF, JAHNCKE, RICE, HAZARD, SPARKS, YOUNG (president), LORD, STEPHANY, HEPNER, CHITTICK, HARTON, THOMAS, BATSON

Probably the most devoted followers on the Ward-Belmont campus of the teachings of the Good Samaritan are the members of the committees of the Y. W. C. A. and the executive board headed by Miss Ruby Van Hooser during the first semester and by Miss Rachel Marks for the latter half of the year. In almost every field, the "Y" members have penetrated with such programs as frequent

visits to Vanderbilt hospital, industrial meetings, the Crippled Children's Home, and the Florence Crittenton Home.

Leaders of the various committees are chosen for their ability and their interest in the partial alleviation of human suffering in one way or another. Perfect president for such a branch of a world-wide organization is gentle Nancy Young whose cheerfulness and enthusiasm for her job are praiseworthy.

OFFICERS

President-----	NANCY YOUNG
Vice-President, First Semester-----	JAN SALISBURY
Vice-President, Second Semester-----	MAXINE PETERSON
Second Vice-President-----	EDWINA GRAFF
Secretary-----	ALICE HARTON
Treasurer-----	MARGARET HEPNER

Committee Chairmen

Entertainment-----	JANE COTTON	Poster-----	MARY KNEPP
Hyphen Representative-----	CARLENE RICE	Junior League-----	JANE MORLEY
Tennessee Children's Home-----	NELI ROCKETT	Preparatory School Representative-----	HOPE HAMILTON
	SARAH THOMAS		ERMIN GUTHRIE
Vanderbilt Hospital-----	DORIS MCCALLAM	Florence Crittenton Home-----	PHYLLIS VOORHIES
Community Tours-----	MARJORIE NILES		MISS RUBY VAN HOOSER
Public Affairs-----	MARGARET PLUMMER	Sponsors-----	MISS RACHEL MARKS
Membership-----	JOSEPHINE SPARKS		
Old Ladies' Home-----	BETTY GRABIEL		



NANCY YOUNG  
President of Y. W. C. A.





*Left to right—RICE, C. CLARK, SPARKS, COCHRAN (editor), STONE, MISS MOORE (sponsor), P. JOHNSON, LANGE, SCHWARTZ*

As the hyphen links the name of Ward-Belmont so does the *Hyphen*, Ward-Belmont's weekly newspaper, link the student to campus activities and the events of the world about her. This year the *Hyphen* has strived to whip together a new and original make-up, varying with the season and the material. From editorials to "Greener Pastures" and from "Paragraph Press" to "Fizzical Femmes" the year's editions have maintained the high standard set in years past. Although Miss Gene Moore,

herself a graduate, was new at the sponsor job, she demonstrated her capability time and again with the more than able assistance of "Cocky" Cochran, editor.

The *Hyphen* has one of the largest staffs on campus, but each cub reporter trots her feet off almost to the ankles to track down the weekly assemblage of news. With a by-line as the eternal goal and their highest compliment a "nose for news," the Hyphenites carry on the journalistic torch at Ward-Belmont.



MARY AILEEN COCHRAN  
*Editor of Hyphen*

### STAFF

Editor.....	MARY AILEEN COCHRAN
Associate Editor.....	JOSEPHINE SPARKS
News Editor.....	ETHEL MARY SCHWARTZ
Feature Editor.....	PATTY JOHNSON
Day Student Editor.....	NANCY STONE
Copy Editor.....	CARLENE RICE
Circulation Managers.....	ANNETTE LANGE MARION LAUE
Copy Reader.....	CONNIE CLARK
Advisor.....	MISS GENE MOORE

### Reporters

Marjorie Crowder, Sue Wilsdorf, Ann Frasher, Pauline Grisso, Irma Kathryn Biel, Phyllis Lindenbaum, Nancy Awtrey, Elizabeth Graves, Paula Lecke, Shirley Allison, Kitty Felton, Nell Rockett, Ann Rolfe, Genevive Chapman, Jane Scovern, Martha Moore, Maxine Peterson, Marjorie Dudley, Ada Buford, Mary Grabiell, Hope Hamilton.

### Office Help

Lucille Ash and Betty Grabiell.

# MILESTONES



Standing, left to right—HARPER, ROARK, MISS MOORE (advisor), POWELL, BAUMAN, FROMAN  
 Foreground—CURTISS, HALEY  
 Seated, left to right—JOHNSON, MEACHAM, FISCHER, DORTCH (editor), KNEPP

Today in America the hands of the clock move swiftly, and as the MILESTONES goes to press Americans grow hourly more conscious of their nation and the rising significance of loyalty to the ideal of democratic government. Because this yearbook has prided itself always on the ability to present major conditions through the medium of campus attitude, 1940-1941 has seen staff members busy with camera, bristol board, and typewriter to set down a picture of the year, sans sentimentality and show.

To advisor Gene Moore and talented editor Roberta Dortch goes much of the credit for any achievement this book may merit with its campus public. With sincerity of purpose and an earnest endeavor to reflect their life and times, the staff of MILESTONES worked this year. If parts of their work shall meet with approval from parts of Ward-Belmont students, the editors of this new American MILESTONES will be amply repaid.

## STAFF

Editor .....	ROBERTA DORTCH
Associate Editor .....	DOROTHY POWELL
Day Student Editor .....	ANN HALEY
Business Manager .....	MARY BAUMAN
Feature Editor .....	PATTY JOHNSON
Assistants .....	MARYJO MEACHAM, KATHERYN SATTERFIELD
Day Student Representative .....	BETTY CURTISS
Preparatory School Representative .....	JOYCE HARPER
Art Editors .....	BEVERLY FROMAN, MARY ELIZABETH KNEPP
Photographic Editors .....	NANCY FISCHER, VIRGINIA ROARK
Advisor .....	MISS GENE MOORE



ROBERTA DORTCH  
 Editor of Milestones



Standing, left to right—B. GREENWOOD, MAJOR, RANSOM, LINDENBAUM, FRASHER  
 Seated, left to right—MISS MYHR, OSMENT, COCHRAN, HAMILTON, SANGREE, WEST, WINNIA, ADAMS, NILES, GRISSO

Three times each year the literary magazine of Ward-Belmont is published through the efforts of an energetic and original staff and their sponsor, Miss Myhr. Every student of Ward-Belmont is a part of the publication since all contributions are considered, and may the best belle win.

The publication is appropriately named the *Chimes* because the belles of the campus are its lifeblood. The

*Chimes* serves a double purpose in that the journalists have an outlet for their creative ability, and those less fortunately talented thoroughly enjoy its mixture of literary material. Every girl on the campus looks forward to December, March, and May as the months of the *Chimes* publication; and its staff this year has not only lived up to preceding years but set a new goal for the years to come.



JESSIE OSMENT  
 Editor of *Chimes*

## STAFF

Editor .....	JESSIE OSMENT
Associate Editor .....	BARBARA GREENWOOD
High School Representative .....	MARGARET SANGREE
Day Student Representative .....	MARY READY WEST
Publicity .....	PHYLLIS LINDENBAUM
Art Editor .....	SUE WILSDORF
Business Manager .....	DIANE WINNIA
Faculty Advisor .....	MISS MYHR



# ATHLETIC ASSOCIATION



Left to right—HARTON, McCULLOUGH, MOORE, BAUMAN, HOLCOMB, CLARK, PLUMMER, BUTTERWECK (president), MASENGILL (receiving trophy), MILLER, WILSON, GRABIEL, MCCARLEY, DAVIS, BRYANT

Any Ward-Belmont athlete striding toward the hockey field, dribbling down the basketball court, or slamming a tennis ball across the net in her best backhand is bound to be a product of the spirit and enthusiasm for sports aroused on campus by the Athletic Association. Organized club teams, interclass tournaments, September campus tours, gym nights, and the renowned Posture Week are all carried out under the skillful direction of the association.

Placing credit where credit is due, the group sponsor, Miss Catherine E. Morrison, is responsible for more than one successful scheme planned by the executive board.

Having for its purpose the promotion of moral and physical welfare, healthy competition, and the ideals of comradeship, good sportsmanship, and fair play, the A. A.'s value is well illustrated by the genuine interest in athletics on the Ward-Belmont campus.

## OFFICERS

President-----	ETHEL BUTTERWECK
Vice-President-----	MARGARET PLUMMER
Secretary-----	FANNIE LOUISE MILLER
General Manager-----	CONNIE CLARK
Assistant General Manager-----	RUTH HOLCOMB
Sponsor-----	MISS CATHERINE E. MORRISON



ETHEL BUTTERWECK  
President of A. A.





The busy hum of French accents is heard here once a month

## FRENCH CLUB

If you "parlez francais" and your vocabulary includes a growing awareness of the time and place for idioms, you are eligible for membership in the Ward-Belmont French Club. You will attend and undoubtedly enjoy the monthly Monday meetings in the green room as well as plays, French bridge, outside speakers, and the annual picnic. You will learn to appreciate things French and find in yourself a new appreciation of English as well.

### OFFICERS

President-----NANCY STONE  
 Vice-President-----NELL ROCKETT  
 Secretary-----PATSY PROCTOR  
 Treasurer-----JOSEPHINE SPARKS  
 Sponsors-----{MISS BERTHA RUEF  
 {MISS JANICE TURNIPSEED

★

★

★

★

★

With two sponsors so well versed in the romantic speech of the Spanish, it is small wonder that the story of "Amparo" and the preterite tense fill the waking thoughts of many Ward-Belmont señoritas. Monthly meetings, also held in the popular green room, feature Spanish songs, movies, and interesting talks. Able to lisp her d's and ignore the j's, the Spanish student may well claim superiority over those less language-minded.

### OFFICERS

President-----MARY ELIZABETH KNEPP  
 Vice-President-----HELEN MARIE CAMP  
 Secretary-----IRMA KATHERYN BIEL  
 Treasurer-----ETHEL MARY SCHWARTZ  
 Sponsors-----{MISS GERALDINE FARR  
 {THOMAS B. DONNER



Spanish señoritas meet to talk of sunny Spain

## SPANISH CLUB

# ART CLUB



President Dimple Dunford exhibits Hope Hamilton in oils to Art Club enthusiasts

If you're energetic enough to climb the long flights of steps up to the art studio or if you should happen to wander into Club Village on a balmy day in spring, you would probably find clusters of art students sketching furiously away on their latest water color, pen sketch, or crayon study. Little wonder is it that young artists work intently at Ward-Belmont, for their department ranks high locally and nationally, their instructor and her assistants are understanding, patient, and skilled, and their equipment is of the best.

Teas, exhibits, lectures, and practical art instruction take up the year in art at Ward-Belmont and a glimpse

at the work of "Bey" Froman, Dimple Dunford, or Mary Jane Becker's lettering jobs shows that their work is not in vain.

## OFFICERS

President -----DIMPLE DUNFORD  
 Vice-President-----MARY JANE BECKER  
 Secretary-----MARY ELIZABETH KNEPP  
 Treasurer-----BEVERLY FROMAN  
 Preparatory School Representative---LOIS BAUM  
 Day Student Representative-----JANE BARTON  
 Sponsor-----MISS MARY WYNNE SHACKELFORD



Der Deutsche Verein, alias the German Club to outsiders at Ward-Belmont, performs no mealy task of uninteresting nothings for disinterested joiners. Instead, it meets monthly under the direction of Sponsor Dorothy Dietrich, herself an inspiration and incentive for study, to enlighten members on the everyday aspects of one of the world's most important languages.

Students run the gamut from Das Rhineland to Mein Kampf and back again, learning as they read and understanding through the medium of club meetings more than they ever knew before about European customs, languages, and traditions.

## OFFICERS

President-----BETTY CLELAND  
 Sponsor-----MISS DOROTHY DIETRICH

# GERMAN CLUB



German Club members keep up-to-date by discussion, reading, and study of their language and its people



Talented young writers gather to discuss, read, and criticize

## PENSTAFF CLUB

Budding authoresses and preparatory school students with a flair for words and their expression are in Penstaff Club given ample opportunity to interpret and enlarge potential talent in the field of journalism. Strictly honorary, the organization permits the submission of two articles as qualification for membership. Purpose of the club is the stimulation of enthusiasm for creative writing and

the high esteem in which the group is held is ample proof of its merits.

### OFFICERS

President ----- MARGARET SANGREE  
 Vice-President ----- MARY EMILY CALDWELL  
 Secretary ----- MARTHA MITCHELL  
 Sponsor ----- MRS. MAX SOUBY

★

★

★

★

★

Though the infant Beta Club was deposited on the preparatory school doorstep only two years ago, it has in that brief space become the object of earnest attention on the part of every girl. A high I. O. entitles its members to meet monthly for discussion and enjoying the talks of outside speakers. Beta has every chance at Ward-Belmont of equalling the success displayed by sister groups throughout the nation.

### OFFICERS

President ----- MARY LANE BELL  
 Vice-President ----- MARY WALKER  
 Secretary ----- MARY LEE MATTHEWS  
 Treasurer ----- MARY EMILY CALDWELL  
 Sponsor ----- MISS NELLIE MAJOR



Brains and the ability to apply them earned this honor for Beta belles

## BETA CLUB









*The spirit of "Everyman" returns to Ward-Belmont*

## SPEECH

Every famous character from Joan of Arc to Mrs. Malaprop has at one time or another passed through the portals of the speech studio to spread the work of outstanding students and their instructors, Miss Catherine Winnia and Miss Mary Belle Smith, throughout the country. Created to meet student problems of self-adjustment,

the department may boast of such attractions as "Everyman" with Jan Salisbury, "As You Like It" with Jo Sparks and Diane Winnia, and actors such as Mozelle Adams, Mary Elizabeth Masengill, Irma Katheryn Biel, Sue Atwell, Ethel Mary Schwartz, and Myra Buchholz.

★

★

★

★

★

Swing time at Ward-Belmont is Captivator time. Thursday nights are eagerly anticipated by each and every jitterbug, waltzer, and music lover. Not only Thursday nights hold a place in the hearts of the belles, but a party is given by this organization during the year, and they give forth on other special occasions. Blonde Shirley Allison

wields a mighty baton, and the Captivators "give" in the person of Rae Wright's crooning sax and Berta Dortch's syncopated rhythm at the keyboard. Their music is of that special variety that seems to get under your skin. With so many assets they were bound to have a successful year.



*Each year Captivators charm anew the hearts and toes of Ward-Belmont belles*

## CAPTIVATORS

# ORCHESTRA



*Josephine Pardue, soloist, and Conductor Rose lead the orchestra to a 1941 climax*

Melodious refrains issue from the direction of the chapel each Monday evening under the conductance of Kenneth Rose. Under his capable baton, the fifty-five members of the Ward-Belmont orchestra create music that is distinctive as well as talented. Main event of the musical year was the concert given during the Fine Arts week with Josephine Pardue as soloist.

Aims of the organization, according to leader Rose, are

to afford serious study and experience in actual execution. Fifty-five diligent artists and one expert instructor have this year succeeded admirably.

## OFFICERS

*President*-----ELVA DYER  
*Secretary*-----JOSEPHINE PARDUE  
*Librarian*-----BARBARA HAGGARD



No doubt the title of this organization was not originally meant to contain a double meaning but the enjoyment that it brings to its large assortment of sopranos and contraltos has been obvious this year. Sponsored and instructed by Mr. Sydney Dalton, the group warbles and chortles its way to mastery of each season's repertoire.

Main event of the Glee Club year was also participation in the Fine Arts week on the first day of April. But

far from being an April fool, the program was well worth listeners' keenest attention. The Glee Club is undeniably a great incentive to further music study.

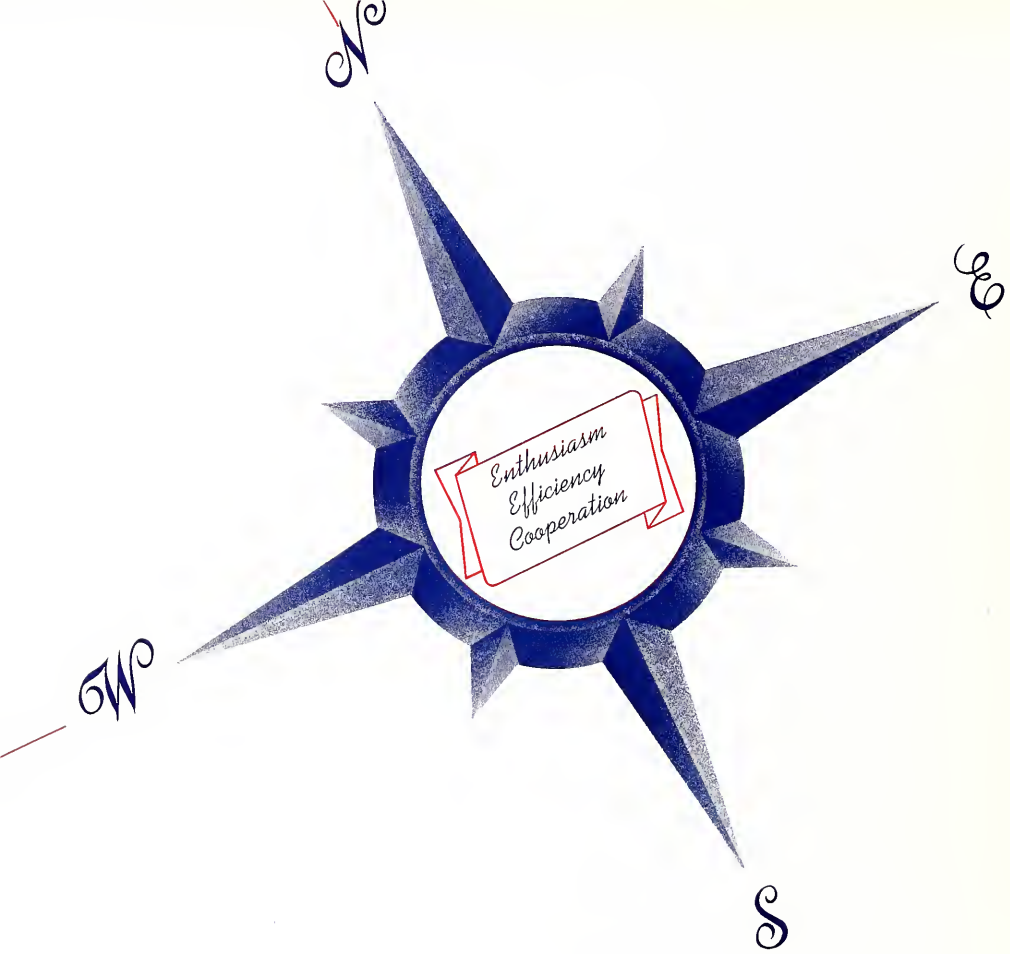
## OFFICERS

*President*-----BETTY HOWELL  
*Secretary and Treasurer*---GENEVIEVE GRESHAM  
*Librarian*-----ELIZABETH CAREY  
*Director*-----MR. SYDNEY DALTON

# GLEE CLUB



*Once again the Glee Club brings harmony and melody to Ward-Belmont*



*from your*







s p o r t s



*Sticks, goals, winners, and rooters*



**HOCKEY VARSITY**  
 Back row—GRAVES, SALISBURY, SPARKS, DORTCH, CURTISS  
 Front row—BUTTERWECK, BAUMAN, ROLFE, C. CLARK, HARTON

**COLLEGE VARSITY**

- |                      |                |
|----------------------|----------------|
| MARY KRIDER          | ROBERTA DORTCH |
| VIRGINIA LOVE GRAVES | MARY BAUMAN    |
| ETHEL BUTTERWECK     | BETTY CURTISS  |
| ANN ROLFE            | CONNIE CLARK   |
| ALICE HARTON         | JAN SALISBURY  |
| JOSEPHINE SPARKS     |                |

**PREPARATORY SCHOOL VARSITY**

- |                  |                    |
|------------------|--------------------|
| ERMIN GUTHRIE    | MARGARET BURK      |
| RUTH HOLCOMBE    | EDITH DAVIS        |
| ROBERTA BRANDON  | MARY E. CALDWELL   |
| MARILYN LOOKADOO | JOYCE HARPER       |
| MARY LANE BELL   | CHARLOTTE CALDWELL |
| ANN MCCARLEY     |                    |



Front row—GUTHRIE, BRANDON, McCARLEY, M. E. CALDWELL, HARPER  
Back row—DAVIS, BELL, BURK, LOOKADOO, C. CALDWELL



# H O C K E Y

When the frost is on the pumpkin, the Ward-Belmont hockey field reaches its annual season of bloom with a large crop of club shorts and enthusiasm. Practice twice and even three times a week made club teams and class squads itch for action and, although feet were numb and noses blue with cold, the games were played off with vim and vigor.

Individual shiners were, as a matter of course, varsity members, and club outstanders such as Louise Jahncke, Alice Harton, Mozelle Adams, Louise Lord, Diantha Norris, Madge Phillips, Virginia Love Graves, Betty Curtiss, and Marilyn Lookadoo.

Laurels go to the T. C.'s who defeated the Penta Tau's in the final game of the club competition and chalked up a victory to gain the much-coveted trophy. Second-place winners were the day students of the Angkor Club whose super-speed playing left them only a few scores short of victory.

The 1940 season reached its climax, however, with the Senior-Senior-Middle and Junior-Junior-Middle games at its close. In the second half of the Senior-Senior-Middle game, the Senior team, superior in weight and speed, pulled ahead to win the battle with four goals over their scoreless rivals. The Junior-Junior-Middle fracas was also filled with excitement with Guthrie, Lookadoo, Bell, and Burk coming through with flying colors after playing consistently good hockey throughout the season.

All in all, the round of games was immensely successful. The season closed minus hard feelings, minor or major mishaps, and plus a renewed knowledge of the best in sportsmanship.





*Young Americans dance their patriotism*

*The final flourish to the dance signature of 1941*

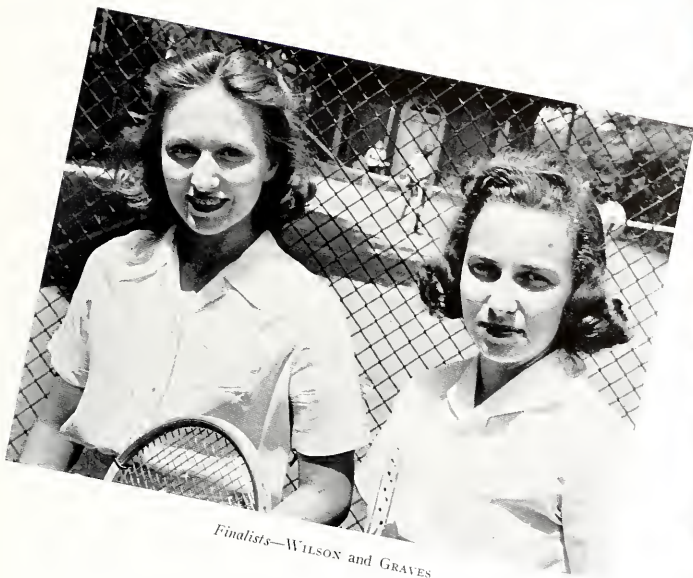
# DANCING

One of the busiest places on the Ward-Belmont campus, not even barring the personnel office or the post office, is Miss Mary Elizabeth Delaney's dance studio featuring tap, ballet, modern, and acrobatic means of tripping the light fantastic. The studio contains many of the most talented and graceful girls in any department.

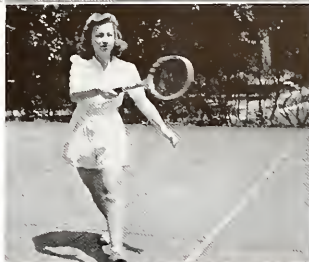
Most girls are interested in tap work with an eye to equalling the work of personality-appeal La Vonne Phillips, Betsy Ann Humphries, Georgia Collins, or Frances Hood. Those who prefer toe work will find a finished model in pert little Mary Teetshorn or Connie Clark. Acrobatic dancing has only one peer at Ward-Belmont but her fame is such that no partner is necessary. Boneless Louise Jahnce, agile and relaxed as a rag doll, does nip-ups, unsupported flips, or splits all with equal poise. Her diploma recital with Betsy Ann Humphries provided Ward-Belmont with its chief topic of conversation for weeks before and after the evening of April 4. As a part of the course each girl created one solo and one group dance with costumes and music arrangements. When Betsy Ann appeared in her Hungarian Rhapsody presentation and when Louise Jahnce appeared in Trepak and Ballet du Reve, the first and only night audience could not suppress oh's and ah's of admiration.

Through the year the dance department presented some of Ward-Belmont's best entertainment. Across the country have come dancers to learn in the studio the elements and essentials of dancing at its best.





*Finalists—WILSON and GRAVES*



*Net results of A plus racquetceering*

# T E N N I S

Early in the fall racquets and tennis balls were in use and the courts were always full of classes or ambitious lassies perfecting their serve, their net, or their return. Miss Cayce taught the beginners the racket and soon they were batting the ball so that it went over instead of under the net.

Some really expert playing was demonstrated at the tennis tournament. Many of the games were close, and many of the sets were long. The smooth and even timing of Peggy Plummer took her a long way in the meet. Alice Harton and Mary K. Clark are both experienced players with fast returns and good footwork.

After weeks of hard playing, eliminating, and more hard playing only two girls remained in the tournament. It was not only Graves versus Wilson; it was Eccowasin versus Penta Tau. V. Love has a low swift return, and a habit of "placing" the ball. Margery has a strong drive and a powerful serve, yet she can tap the ball so softly it will drop just over the net. It was a nerve-racking match, with Wilson claiming a 2-6, 6-3, 10-8 victory.

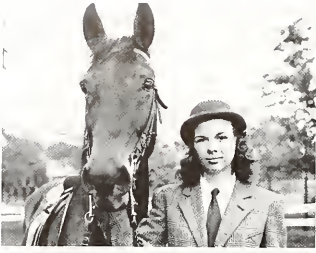
## V A R S I T Y

JAN SALISBURY

ALICE HARTON

VIRGINIA LOVE GRAVES

MARGERY WILSON



*Over the fence in perfect form*



*Ridin' high thru every season*





MacDuff and Blossom battle it out to a finish



## R I D I N G

Twice each year Ward-Belmont moves en masse out to the riding ring to view the semi-annual horse shows produced by beautiful, capable Miss Camilla Nance.

The X. L.'s, veteran cup winners in any event, walked proudly off with the fall trophy after winning the spring show in 1940. Sponsored by the Turf and Tanbark, the single day exhibition was judged by Lucile McDuffie, Carol Bryant, and Mary Jane Becker. First-place winners were Ernie Shears, Katherine Bryant, Helen Marie Camp, Maxine Peterson, Betty Thomas, Jane Scovern, and Sally Conrad, the last two named winners in the pair class.

With the appearance of the first crocus on campus, Nance horsewomen were again in the ring, in the stable caring for prancing steeds, and in the pink of enthusiasm for the spring show. May seventh dawned bright and unclouded and first-place winners beamed almost as brightly as their heavenly contemporary when ribbons were awarded to Lucile McDuffie, Mary Aileen Cochran, Kay Combs, Sally Conrad, Jane Scovern, Ann Frasher, and Mary Jane Learned.

May eighth climaxed the year for riding majors and every gaberdine-clad hopeful entered the ring with a thumping heart and a shaking hand. Carol Bryant cantered away with five-gaited honors, Marilyn Brown won the management blue ribbon, little Mary Smith jumped to victory, Mary Eleanor Ritenour was awarded three-gaited first place, Nancy Fischer and Lucile McDuffie won park ride, and Carol Bryant was made champion rider of the year, an honor which all riders dream of and few merit.





COLLEGE BASKETBALL VARSITY  
 Left to right—ADAMS, BAUMAN, CAMP, HARGIS, BUTTERWECK, THOMISON

*Highlights in the gentle art of the basket*

COLLEGE VARSITY

- |                   |                  |
|-------------------|------------------|
| MARY BAUMAN       | HELEN MARIE CAMP |
| VIRGINIA THOMISON | ETHEL BUTTERWECK |
| MOZELLE ADAMS     | ALICE HARGIS     |

PREPARATORY SCHOOL VARSITY

- |                   |                        |
|-------------------|------------------------|
| MARY JANE LEARNED | ANN ELIZABETH MCCARLEY |
| BETTY WARDEN      | ERMIN GUTHRIE          |
| SALLY MAYFIELD    | MARGARET BURK          |



Left to right—McCARLEY, WARDEN, BURK, GUTHRIE, LEARNED, MAYFIELD



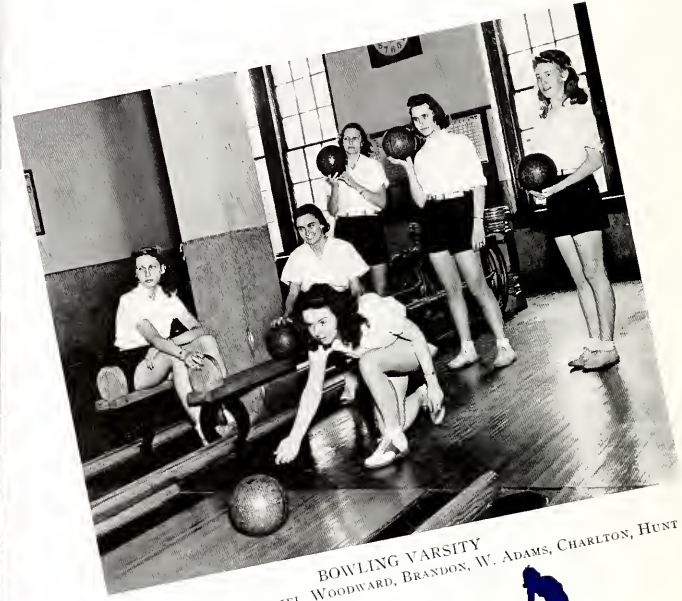
## B A S K E T B A L L

When the basketball season rolls around at Ward-Belmont, practically every other activity is out as far as Helen Marie Camp, "Tommy" Thomison, Nancy Awtrey, and Mary Jane Learned are concerned. Fun to watch as well as to play, basketball this year was one long series of thrills and spills a la Suzanne Gibson.

The Tri K's were the personification of cooperation with fiery-haired "Peaches" Norris and Ethel Butterweck playing spectacular basketball. Most club teams were above average in their playing and sportsmanship, although the X. L.'s had a sextet of sirens who were absolutely unbeatable. Little Dot McCracken proved herself a valuable asset to the team of experts who scored themselves into first place in the tournament.

For the day students, the blue-clad Angkors were most outstanding, whizzing through all opposition only to be downed by the X. L.'s in the semifinals. Day student shiners were Mozelle Adams, unshakable Ariston guard, Alice Hargis, Ann Elizabeth McCarley, and Margaret Burk.

Basketball holds a strong position in the hearts of most Americans, and Ward-Belmont basketbelles are no exception. To them, the epitome of delight is the clean swish of the ball as it slips through the basket—to tie the score of a game well played.



BOWLING VARSITY  
 Left to right—M. GRABIEL, WOODWARD, BRANDON, W. ADAMS, CHARLTON, HUNT



# B O W L I N G

The alleys reverberated long and loud when the time came to roll in those strikes and spares. The gym office simply overflowed with enthusiastic prospects. Miss Cayce gave instructions, then prayed that the floor would still be the same after the beginners dropped the ten-pounders ten times a "row." After the bewildered girls saw the ball in the "gutter" and the pins still upright for about a week the dawn began to break and the scores added to three digits.

After weeks of practice the Seniors and Senior-Middles went down to the alleys to compete for the championship. Mary Frances Charlton and Betty Grabiell were the pride of the Seniors. Both girls have a curve ball with a thunderbolt of power behind it, and they throw it hard and fast without ever stepping across the foul line. The Seniors scored 429 but the Senior-Middles, led by Mary Grabiell, topped it by thirty-eight points. Grabiell was high scorer for the day with 133 points. She was easily the outstanding bowler of the season, although many of the girls marked up many a spare and strike to her credit.

## BOWLING VARSITY

- |                       |                 |
|-----------------------|-----------------|
| MARY GRABIEL          | JANE WOODWARD   |
| WAYER ADAMS           | BESS HUNT       |
| MARY FRANCES CHARLTON | ROBERTA BRANDON |

## BOWLING SECOND VARSITY

- |                 |                |
|-----------------|----------------|
| BETTY JOHNSON   | ALICE THOMPSON |
| MARY BAUMAN     | JEAN MANEY     |
| BETTY B. COONEY | JACKIE JACKSON |





*Aquagreen Connie Clark tops rivals in swim meet*



# S W I M M I N G

With every splash in the Ward-Belmont pool this year the fish were given more forceful competition by finless adversaries as the beginning and advanced water splashers perfected Eleanor Holm form.

Connie "Speedboat" Clark showed versatility from the first with superior form, diving ability, and speed. The swimming meet, far from washing her up, floated the capering Connie into first place with diver Mary Bauman second. Ann Rolfe aided the T. C.'s in their victory for second place, the X. L.'s having garnered the silver cup, with a wave-slicing exhibition of speed swimming. Mary Jane Learned, however, was the youngest letter winner, which must prove that even tadpoles can show the big fish how to swim.

## SWIMMING LETTERS

CONNIE CLARK.

MARY JANE LEARNED

PEGGY ARBUCKLE  
JANE BARTON  
MARY BAUMAN  
ERNESTINE HOFIUS

## LIFESAVING

DALE JELLISON  
MARJORIE OLSON  
JOSEPHINE SPARKS

*Water babies swim like fish*



*Ann and Cilly are foiled again*



## FENCING, GOLF

Foiled again the Ward-Beimont fencers gather together twice each week for practice in the gentle art which thrilled Dumas and thousands of readers from Paris, France, to Paducah, Kentucky. Under the direction of Miss Betty Jane Sehmman, the upholstered swordwomen thrust and parry in the hope of one day becoming not only prodigies of grace but examples of skill.

Percy Warner Park, pulchritude, and the latest in plus fours all add up to Ward-Beimont golfers almost any spring day. Although golf at the school is at a relatively tender age, it has been adopted with energy by several dozen Patty Bergs a la Nashville style. Pat Adams, Mary Jane Miller, Alice Harton, and Patty Walker all have a steady drive and a sure putting stance which places them among top rankers on the spring greensward.



*Not a miss in a mile for golfers*







*Archers have keen eyes for the target*

## BASEBALL, ARCHERY

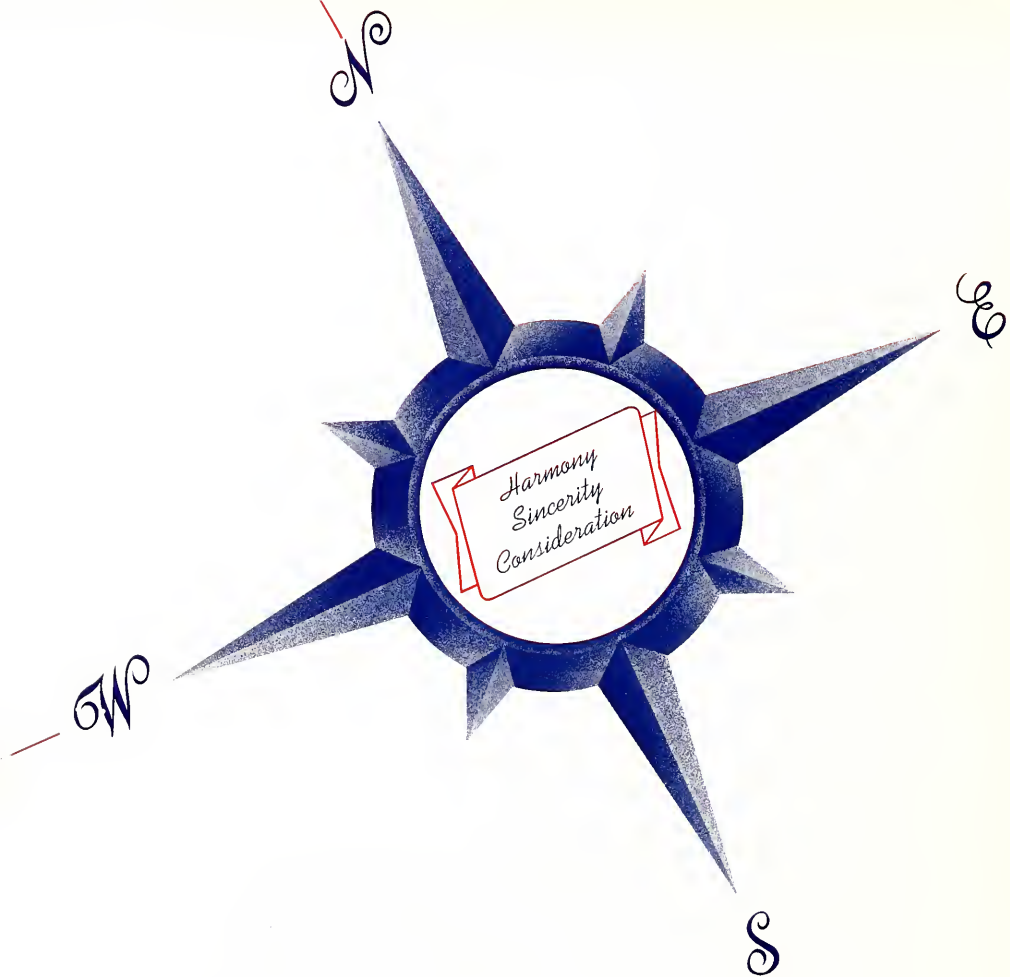
Nothing more heart-warming than "home run" is ever uttered from the mouths of crack umpires Miss Morrison and Miss "Tillie" as Cilly Ash, Mary Jane Learned, or Edith Davis slugs a heavy hit into the hedgerow. However it takes a mighty swing as well as a good eye to wham a Jahncke-pitched ball or one served steaming hot by Tri K Virginia Thomison.

Nothing more gratifying than "bull's-eye" ever reaches the ears of Ward-Belmont archers who exhibit as their pride and joy Mary Elizabeth Henley, with a score of fifty out of a possible fifty-two. But archery is one of the rare sports where practice makes perfect and determination brings success. Other potential William Tells are Jane Woodward, Mary Bauman, and Lois Wright. Such rising athletes agree with vehemence that spring sports are fun, and exercise too.



*Baseball makes sports-minded students*





*from your*





c l u b s

# AGORA CLUB



MISS GERTRUDE CASEBIER  
*Sponsor*

SHIRLEY ALLISON  
*President*

SHIRLEY ALLISON  
GENEVIEVE GRESHAM  
FLORENCE HOAK

MABEL BEDSOLE  
GRACE ELIZABETH HALL  
RUTH JENCKS

BETTY CLELAND  
ALICE HARTON  
NAN JENNINGS

JANE COTTON  
MARTHA ANN HAYNES  
JEAN KUEHNE

MARJORIE CROWDER  
SUZANNE HAZARD  
PHYLLIS LINDENBAUM

WRAY GARTH  
LOUISE HENNING  
JANE MATTHEWS







JANE MORLEY  
MARIAN TAICHERT

SARAH PRIDE  
HELEN WARD

ELAINE QUEEN  
FRANCES WHEELER

JANE SEPTON  
MARTHA WHEELER

AILEEN SILVERMAN  
LOIS WRIGHT

ELLEN SPANGLER  
NANCY YOUNG

**D**OWN IN CLUB VILLAGE underneath a magnolia tree stands no village smithy but a Spanish-style bungalow where each week thirty girls gather in the sort of comradeship that makes for workable unity no matter where it may be found. The Agora Club is composed of girls who have found in their organization the ability to shine individually and collectively. Such ability is gleaned not a little from the leadership of popular Miss Gertrude Casebier, sponsor, and lovable, talented Shirley Allison, president.

Proof of the rise and shine project lies in the dependability of blue-eyed Jane Cottom, the generosity and leadership of Marjorie Crowder, the athletic prowess of Alice Harton, Jane Morley's vocal success, and the far-reaching work of Nancy Young as Y. W. C. A. president. Popularity of Agora Club members such as Wray Garth, Suzanne Hazard, Phyllis Lindenbaum, Ellen Spangler, and Lois Wright proves also that Agora talents are not confined

within clubhouse doors but have spread by reputation across campus.

\* Yet the verbal bouquet-tossing that may be accomplished on behalf of the ambitious Agoras will scarcely explain the intangible spirit that will always continue to hold such a group together.



#### OFFICERS

*President*-----SHIRLEY ALLISON  
*Vice-President*-----JANE COTTOM  
*Secretary*-----WRAY GARTH  
*Treasurer*-----JANE MORLEY  
*Sergeant at Arms*-----MARJORIE CROWDER  
*Sponsor*-----MISS GERTRUDE CASEBIER

# A. K. CLUB



HELEN MITCHELL  
*President*

MISS VIRGINIA RICHEY  
*Sponsor*



MARGARET ARBUCKLE  
MARILYN FRUCHTMAN  
MARION LAUE

MARTHA CALDWELL  
MARION HENN  
JANE REBECCA LOBDELL

GENEVIEVE CHAPMAN  
MIRIAM HOOVER  
DORIS MAY

ELIZABETH CLEVELAND  
KATHLEEN JAFFE  
HELEN MITCHELL

MARY KATHRYN COMBS  
JEAN IRMA JOHNSON  
SYBIL PARKIN

MARY CATHERINE FELTON  
PEGGY JANE KEOWN  
BARBARA RAMSEY





MARY LOUISE ROBINSON  
ANNETTE TARBET

KATHERINE EARL SCHMIDT  
BETTY VERSEN

JANE SIMMONS  
JANET VOHL

MARY SMITH  
BETTY JO WARDEN

SUSAN JANE STEENBURG

DOROTHY SUTTON

**W**ITH A CLUBFUL of outstanders and a spirit of patriotism, the A. K.'s are bound to keep their standing high in campus activities. To the well-balanced mixture of the whole, add such special ingredients as the friendly good humor of Jean Johnson, Helen Mitchell, Marion Laue, "Kack" Schmidt, and Kathleen Jaffe, mix well with one extra special basketball team headed by Janet Vohl, sprinkle with the eye-appeal of Doris May, Annette Tarbet, Sybil Parkin, and Bunmy Ramsey, and you have six or eight good reasons why the A. K. pudding is so pronounced a success.

more than they do themselves. It is she who is responsible for the unity of her group, for the parties, week ends, and open houses, and even the new victrola of which members are so justly proud.

The A. K.'s radiate their spirit and their spirit in turn has made for them the reputation of sportsmanship and cooperation in every task they undertake.



**OFFICERS**

- President*-----HELEN MITCHELL
- Vice-President*-----BARBARA RAMSEY
- Secretary*-----GENEVIEVE CHAPMAN
- Treasurer*-----MARY LOUISE ROBINSON
- Sergeant at Arms*-----MARTHA LYNN CALDWELL
- Sponsor*-----MISS VIRGINIA RICHEY

Seasoning of the dish might well be the popularity of A. K. girls such as Peggy Ar buckle, or perhaps the dimpled grin of Lynn Caldwell, Betty Cleveland's appeal, and Kitty Felton's irrepressible spirits. For dependability Genevieve Chapman and Sue Steenburg are tops, and for just plain brains, Marion Henn.

A sponsor must always have a finger in anything her club cooks up and such is the case with curly-haired Miss Virginia Richey who resembles one of her Senior-Middles



# ANGKOR CLUB



PEGGY WRIGHT  
*President*

MISS FRANCES EWING  
*Sponsor*



JANE BARTON  
BETTY B. COONEY  
NANCY HILL

JANE BRUAN  
KATHRYN COOPER  
RUTH HOLCOMB

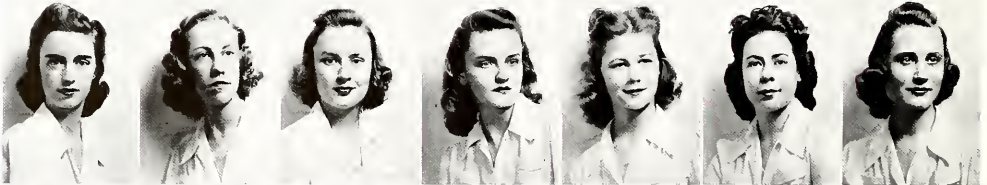
MARGARET BURK  
MARTHA DAVIS  
FRANCES JOHNSON

ALLISON CALDWELL  
DOROTHY DORRIS  
NANCY LASSETER

LAURA CALDWELL  
LEILA DOUGLAS  
JANE LAWRENCE

ELIZABETH CHARLTON  
KATHLEEN HAGAN  
CYNTHIA LOWE

MARY FRANCES CHARLTON  
SARAH HUNTER HICKS  
MARY GRACE MAJOR





MARJORIE PAYNE  
ALICE STOVALL  
PEGGY WEMYSS

PATRICIA PROCTOR  
ALICE THOMPSON  
DIANE WINNIA

FRANCES RAGLAND  
JANE TISDALE  
ELIZABETH WOODCOCK

CAROLINE REINKE  
ANN VAUGHN  
JANE WOODWARD

LAURA SAVAGE  
NANCY WAGGENER  
AVONNE WRIGHT

DOROTHY SAXON  
PATRICIA WARREN  
PEGGY WRIGHT

MARY FLORENCE SHOENER  
BETTY WASHINGTON

**M**ISS FRANCES EWING and Miss Peggy Wright are two of the nicest people you could find anywhere. The fact that they are sponsor and president, respectively, of the Angkor Club only goes to prove that the Angkors are an extra appreciative bunch of people. Besides being a blonde with brains, President Peggy is outstanding in the speech department and a leader of a club which regularly appropriates the scholarship cup, and this year won the bowling cup due especially to the efforts of Mary Frances Charlton and Betty B. Cooney, who both made Senior varsity.

Angkors also hold down varsities in many a sport, and their basketball team was a dream of cooperation. Margaret Burk, Patsy Proctor, Jane Bryan, Ruth Holcomb, Alice Thompson, and Betty Washington held up the athletic end of the blue and white banner with campus-wide publicity. Yet mention must surely be made of Diane Winnia in speech where her unusually beautiful speaking voice has won her justifiable renown, Alice Stovall whose

work as day student treasurer of the Senior class shows her ability to handle anything from dimes and nickels to ten-dollar bills, Nancy Lasseter whose mental ability earns quarterly miracles, Jane Woodward, second vice-president of the day student council, and Betty Washington, secretary of the prep school Senior class.

A clubful of talent and a yearful of responsibility have made the Angkors one of Ward-Belmont's most distinguished organizations, day student or boarder. Such a MILESTONES and campus rating is not to be sniffed at, and the Angkors agree.



#### OFFICERS

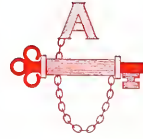
*President*-----PEGGY WRIGHT  
*Vice-President*-----JANE BARTON  
*Secretary*-----MARGARET BURK  
*Treasurer*-----ALLISON CALDWELL  
*Sergeant at Arms*-----NANCY HILL  
*Sponsor*-----MISS FRANCES EWING

# ANTI-PANDORA CLUB



MRS. HELEN KING FIDLAR  
*Sponsor*

VIRGINIA COTTEN  
*President*



PATRICIA ADAMS  
LOUISE DAVIS  
PATRICIA GREENWOOD

SUE ATWELL  
MARCIA EIDELMAN  
PAULINE GRISSO

JEAN BLOOM  
FAVE FRACKMAN  
BARBARA HAGGARD

GEORGIA COLLINS  
CATHERINE GAINES  
PEGGY HEDGCOXE

VIRGINIA COTTEN  
PEGGY GILLIAM  
BETTY JEAN HOWELL

ROBERTA CROSBY  
BARBARA GREENWOOD  
DALE JELLISSON







PEGGY JOHNSON  
VIRGINIA LEE ROARK

ST. CLAIR PEERY  
MARY JO SCOTT

MARILYN PETERSON  
ARDELLE THOMAS

MAXINE PETERSON  
DOROTHY JEAN WHEELER

HELEN RICHARDSON  
AUDREY WING

LUCILE RICHARDSON

AS YOU ENTER CLUB VILLAGE the first house to catch your eye is the attractive, friendly-looking Anti-Pandora. The wide porch and spacious doors make you feel welcome at any time and the house is significant of the girls. Virginia Cotten, their capable president, and Mrs. Helen Fidler, their charming sponsor, are both well known on the Ward-Belmont campus.

Louise Davis and Peggy Gilliam are shining examples of this friendly spirit. No one can resist the temptation to smile when they burst forth with some of their subtle wit. But the Anti-Pans prove that they are more than friendly by boasting such members as Barbara Haggard who is an "A" student as well as an accomplished musician. The Greenwood sisters, Patty and Barbara, are popular girls who also manage to stay on the honor roll. For a song and dance Ardelle Thomas and Georgia Collins both more than qualify. "Tommy" has remarkable ability to thrill with her husky low voice. The Anti-Pans regard with pride Dale Jellison and Pauline Grisso, who both hold important offices on the campus. Dale is president of the Senior-

Middle class while Pauline is secretary of the student council. Both girls are known on the campus as outstanding leaders.

Jean Bloom, who doesn't quite stretch to the five-foot mark, is a fine horsewoman, and you'll see her flashing pictures at all important affairs along with Virginia Roark, who is also adept with the camera.

However nothing can be said to express the loyalty that the Anti-Pandoras have for their club, and it is this loyalty that will keep them always an outstanding club on the campus.



#### OFFICERS

<i>President</i> .....	VIRGINIA COTTEN
<i>Vice-President</i> .....	BETTY HOWELL
<i>Secretary</i> .....	MARY JO SCOTT
<i>Treasurer</i> .....	ST. CLAIR PEERY
<i>Sergeant at Arms</i> .....	ARDELLE THOMAS
<i>Sponsor</i> .....	MRS. HELEN KING FIDLAR

# ARISTON CLUB



MISS EVELYN WIDELL  
*Sponsor*

MOZELLE ADAMS  
*President*

MOZELLE ADAMS	IRENE ANDERSON	PATRICIA ANDERSON	PHOEBE ANDERSON	MARY LANE BELL	EVELYN BOONE	MARTHA BRUCE
MARY EMILY CALDWELL	MARJORIE TOM CHAMBERS	ANNE CORE	SARAH POLK DALLAS	MARY DALTON	MARY ELAM	PATTIE FRENCH
MARIE GOOCH	GERALDINE GRAY	ANNE HARRISON	CATHERINE HARTNETT	MARY ELIZABETH HENLEY	GERALDINE JOHNSON	ELIZABETH JONES





NANCY LANDIS      FRANCES LOVELADY      ANN ELIZABETH MCCARLEY      JEAN MANEY      MARY LEE MATTHEWS      FANNIE LOUISE MILLER      MARTHA MITCHELL  
 DOROTHY NOLAND      JESSIE OSMENT      JOSEPHINE PARDUE      HELEN PATY      JUANITA REEVES      JEANE ROLFE      MARY ELIZABETH SAWYER  
 NANCY STONE      DORIS ANN SMOTHERMAN      ELAINE VINCENT      MARY TAYLOR WILLIAMS      DOROTHY ANN YOUNG

**N**O MORE LOYAL club president ever existed than cheerful, friendly, sincere Mozelle Adams, who is both an inspiration and a guide to her law-abiding Aristons. Individual Aristons are brain-child Mary Elizabeth Henley, tennis star Sarah Polk Dallas, who also heads the Junior class of the preparatory school, walking encyclopedia Ann Elizabeth McCarley, bowling varsityist Jean Maney, brilliant Nancy Stone, violin virtuoso Josephine Pardue, and *Chimes* editor Jessie Osment.

The Aristons are also noteworthy for the glamour of their scholars, namely Nancy Landis, Elaine Vincent, Nancy Stone, Jessie Osment, and Ann Smith, who also composes with a vengeance. Nominations for most interesting member go to Helen Paty, recently of China, who struck Ward-Belmont belles spellbound with a spring chapel talk.

The Aristons were also undoubtedly clever in their choice of sponsor, for soft-voiced Evelyn Widell is all

that an ambitious club could ask. Largest order of the year for club members was the precedent-breaking day student club dance in which Aristons took a more than active part.

Although it is difficult for day student club life to find the place in members' daily routine that boarding organizations hold, President Adams and her cohorts have made their club an integral part of school life for each and every member.



**OFFICERS**

- President*-----MOZELLE ADAMS
- Vice-President*-----ANN ELIZABETH MCCARLEY
- Secretary*-----MARY ELAM
- Treasurer*-----NANCY STONE
- Sergeant at Arms*-----ELAINE VINCENT
- Sponsor*-----MISS EVELYN WIDELL



# DEL VERS CLUB



MISS OLIVE WHITE  
*Sponsor*

PATTY JOHNSON  
*President*



NANCY AWTREY  
ELAINE CHITTIK  
JEWELL HOLTSINGER

EILEEN BATSON  
LAURA DEMMER  
PATRICIA JOHNSON

MOLLY BELLAMY  
MARJORY GARMANY  
MARY STUART KELLOGG

CAROL BRYANT  
DOROTHY GLICK  
MARY KIRKLIN

KATHERINE BRYANT  
BARBARA HAGERMAN  
MARY KNEPP

MYRA BUCHHOLZ  
JANE HOLLEY  
LOUISE LORD





MARY JANE MILLER  
JAN SALISBURY

LA VONNE PHILLIPS  
JOANNA SHERMAN

MARGARET PLUMMER  
MARY TEETSHORN

MARY ELEANOR RITENOUR  
MAE TODD

MARY ELLEN RUSSELL  
PATRICIA WALKER

PHYLLIS RUSSELL

**T**HE DEL VERS, twenty-nine of them, have fun together. They make this possible because they like the same things, have the same interests, know the same people, and see eye to eye on the all-important matter of friendliness. Because their members wanted games and parties: a skating party, a kiddy party, a Valentine party, and a play night once each month resulted. Because the members felt the urge to entertain: an open house and the annual faculty-president's council garden party came about.

Because they like to take trips: two club week ends, one to Rawlings and one to Dunbar Cave, took place in the fall and spring. And the Del Vers enjoyed every minute of all of it.

Since collective success is due to individual ability, such spirit is not hard to understand. Nancy Awtrey, as capable a class officer as she is a basketball player; Molly Bellamy, beautiful Martha of Washington Day; Carol Bryant, first semester chapel proctor and all-year horse-woman; "Kottie" Bryant. "Barb" Hagerman, "Rit"

Ritenour, and "Rusty" Russell in the riding ring; Mary Kirklin, first vice-president of the student council; Mary Knepp, art editor of MILESTONES and president of the Spanish Club; and La Vonne Phillips and Mary Teetshorn, dance majors.

Multiply such an array of figures by one special sponsor, Miss Olive White, and one president, Patty Johnson, and you will find yourself with a total that reaches at least the ninety per cent mark for just plain good times.



OFFICERS

- President-----PATRICIA JOHNSON
- Vice-President-----CAROL BRYANT
- Secretary-----KATHERINE BRYANT
- Treasurer-----MARY KIRKLIN
- Sergeant at Arms-----ELAINE CHITTICK
- Sponsor-----MISS OLIVE WHITE

# ECCOWASIN CLUB



MISS LOUISE SAUNDERS  
*Sponsor*

BETTY CURTISS  
*President*



SUZANNE ADDINGTON  
HAZEL COCKRILL  
VALLIE JO FOX

MARSHA ALLEN  
VIRGINIA COLLINS  
VIRGINIA LOVE GRAVES

KATHERINE BILBRO  
BETTY CURTISS  
JANE HASWELL

MARY BUCKNER BRITT  
EDITH DAVIS  
FLORENCE ANN HUDSON

JANE CARTER  
PEGGY DAVIDSON  
BESS HUNT

ABELINE COCKRILL  
PHOEBE DOUGLAS  
JACQUELINE JACKSON







KATHRYN KENT  
NANCY PEACH  
MARTHA RICHARDS

CLARA KNOX  
JEANNE PILKERTON  
MARGARET SANGREE

ALINE LILLARD  
RUTH FAW POINTER  
ANN SEABOLT

SARA McCULLOUGH  
ZARA PRITCHETT  
MILDRED ANN WALSH

MARY KEITH MADDIN  
BETTY QUARLES  
MARY READY WEST

PATTY MASKING  
MARY FRANCES RAINE  
GRACE WHITE

**T**HE ECCOWASINS through forty strong and manage to be one of the most versatile clubs at Ward-Belmont. One of the four day student clubs, it is ably led by blonde Betty Curtiss, whose pleasant smile and Southern friendliness add up to a sum total of diplomacy and popularity. Other officers in the club consist mainly of Cockrills, which proves that Hazel and Adeline are executives par excellence, even to making noise, according to Sponsor Louise Saunders.

Though club members are accomplished in music, scholarship, and every other form of school activity, athletics are their long suit. V. Love Graves, president of the day student council, advanced to the finals in the singles tennis tournament in the fall; Edith Davis has proved her graceful hands mean more than decoration when they grip a hockey stick and flip a basketball. As a champion bowler, Bess Hunt fills the bill, yet direct contrast to athletics finds the Eccowasins with a special group of musicians. Martha Allen has the certain some-

thing that puts over a song, and Jeanne Pilkerton is grand on a grand. For brains Mary Ready West and Helen Ransom are ready, willing, and able, and for a pleasant manner and an ever cheerful disposition, Kathryn Kent is the acknowledged master.

So the picture of the exceptional Eccowasins is complete, and it includes every essential of the well-rounded personality so necessary to the character of the perfect Ward-Belmont graduate.



**OFFICERS**

- President*----- BETTY CURTISS
- Vice-President*----- ADELINE COCKRILL
- Secretary*----- HAZEL COCKRILL
- Treasurer*----- MARY READY WEST
- Sergeant at Arms*----- SUZANNE ADDINGTON
- Sponsor*----- MISS LOUISE SAUNDERS

# F . F . CLUB



LOUISE JAHNCKE  
*President*  
MISS BERTHA RUEF  
*Sponsor*



L'ENE BIGGS  
ANN FRASHER  
SHIRLEY LONG

FRANCES BROWN  
LUCERNE HEROLD  
MARY ANN MEER

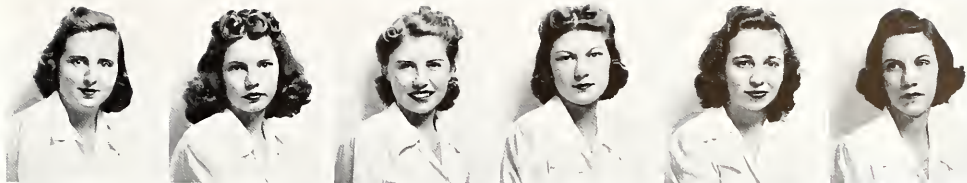
JEAN BUTLER  
LOUISE JAHNCKE  
NANCY JACQUELYN MERSHIMER

FRANCES COLLINS  
JANE KOLINSKY  
SARAH MITCHELL

MARY HELEN COWAN  
FLORENCE LANIER  
JEANNE MORROW

GEORGIANA FERGASON  
MARY JANE LEARNED  
MARJORIE NILES





MARJORIE OLSON  
BETTY JEAN THOMAS

LORRAINE REID  
SARAH THOMAS

NELL ROCKETT  
JEAN WALDRUP

AMANDA SARVER  
JANET WEIMER

BETTY ANN SEESE  
BERNICE WEINGARTEN

DOROTHY STEPHANY

**R**EGARDLESS OF WHAT the F. F.'s consider their title to mean, Ward-Belmont considers it an emblem of double friendliness, not the casual greeting but a warmth of true affection for their club, president, sponsor, and school that go far toward making club members popular across campus.

The F. F.'s respect the rights of others and the appearance of their club. No doubt President Louise Jahncke has much to do with this respect, for a good deal of it is centered about her. Bookworm, acrobat, musician, her popularity with her club is as unchangeable as Niagara. Sponsor Miss Bertha Ruef is also no slouch in the matter of friendship, for even her French classes sing her praises daily.

Of leaders the F. F.'s possess their rightful share. For shining examples one may survey the vocal verve of Frances Brown and Jean Butler, the scholarship of Georgiana Ferguson and Ann Frasher, the warm hearts of "Cerny" Herold and Nell Rockett, and the alert brains of Sarah Thomas and Dorothy Stephany. For redheads, we'll take "Pinky" Meer any day in the week, and for athletes of

championship caliber, Mary Jane Learned. Beauty ranks high in the blonde charm of Marjorie Niles, dark little Amanda Sarver, popular Bernice Weingarten, wide-eyed Shirley Long. Difficult indeed would it be to find a more mixed club roster—or a more loyal one.

Provided with harp chords by Janet Weimer, dance steps by Lorraine Reid, and wardrobes like those of Jean Waldrop, the composite F. F. girl is a dream walking. But she lives in every F. F. heart.



**OFFICERS**

- President*-----LOUISE JAHNCKE
- Vice-President*-----NELL ROCKETT
- Secretary*-----FLORENCE LANIER
- Treasurer*-----MARJORIE NILES
- Sergeant at Arms*-----LORRAINE REID
- Sponsor*-----MISS BERTHA RUEF



# OSIRON CLUB



MISS DOROTHY DIETRICH  
*Sponsor*

MIRIAM CUTLER  
*President*



LOIS BAUM  
JOAN GRUBB  
LORRAINE HYDE

RUTH CABR CREASON  
ERMIN V. GUTHRIE  
BETTY JOHNSON

MIRIAM CUTLER  
MARGORIE HALEY  
IRENE JOSEPH

DOROTHY JEAN FITCHORN  
ERNESTINE HOFIUS  
FRANCES KAY

JUNE GARLAND  
FRANCES HOOD  
CORDELIA LAMBERT

HARRIET GENTRY  
BETSY ANN HUMPHRIES  
JUNE LEHAN





MARY LOU McCLANAHAN  
RUTH WHITTLESEY

MARGUERITE REAGAN  
MARY THAYER WILSON

MABLE ELLEN RINGLING  
MARION WOOD

JUANITA ROCHELL

KATHERYN SATTERFIELD

BECKY LOU WATSON

**S**HE HAS SPARKLING BLUE EYES and a manner of leadership that makes Osirons pleased and proud to point her out as their sponsor, Miss Dorothy Dietrich. Working with her throughout the year has been clever, capable Miriam Cutler, whose calm efficiency has endeared her to Osiron hearts. Through such executives plus Ruth Whittlesey, who also managed the Senior-Senior-Middle banquet, Lois Baum, the most Osironical of them all, and Betsy Ann Humphries, dance major, the club was assured of a year's program both varied and well-planned.

Made up primarily of preparatory school members, the second clubhouse on the right nevertheless contains a group of outstanding girls. Mary Thayer Wilson writes as well as she competes athletically, Kathryn Satterfield showed her organizing ability by managing an all-club dance as well as writing copy for the MILESTONES. Marguerite Reagan has remarkable ability to please the Vesper-attending student body with her readings, Cordelia Lambert and Ermin Guthrie are athletes of no mean ability, Frances Kay

exceeds in tap, Marjorie Haley is a top-flight Turf and Tan-barker, and Dotty Fitchhorn blows sweet and swing in the Captivator saxophone section.

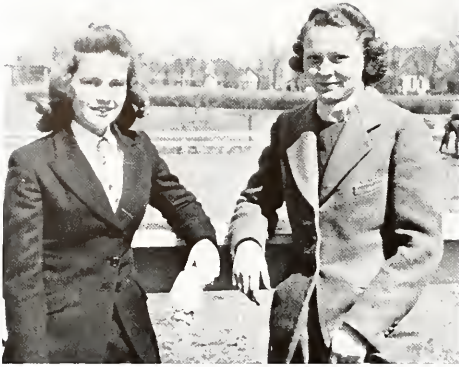
The way the Osirons figure it is that the cups don't count as much as the spirit with which they are won and the club loyalty evidenced by every member shows the value of such an attitude.



**OFFICERS**

- President-----MIRIAM CUTLER
- Vice-President-----RUTH WHITTLESEY
- Secretary-----KATHERYN SATTERFIELD
- Treasurer-----LOIS BAUM
- Sergeant at Arms-----BETSY ANN HUMPHRIES
- Sponsor-----MISS DOROTHY DIETRICH

# PENTA TAU CLUB



DIMPLE DUNFORD  
*President*

MISS CAMILLA NANCE  
*Sponsor*



CHARLOTTE ARMSTRONG  
DIMPLE DUNFORD  
DOROTHY JEANNE KAUFFMAN

WINIFREDE BELCHER  
MARJORIE EICHENLAUB  
MARY KRIDER

MARY BLANKENHORN  
NANCY FISCHER  
DONNA LESLIE

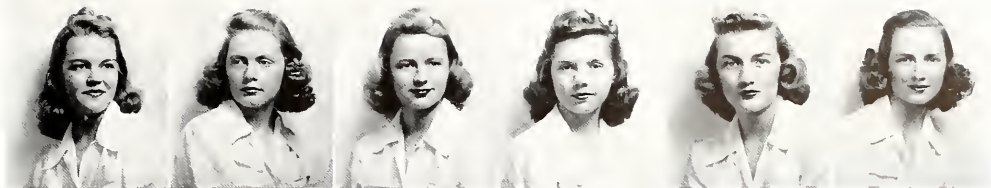
MARILYN BROWN  
RUTH HORTON  
SARAH LOUISE MAYFIELD

MARY KATHRYN CLARK  
PHYLLIS JOFF  
ANNE PHILLIPS

MARY DAWSON  
JANE JUDD  
PENNY SHAW







MARTHA ELIZABETH SMITH  
JAYNE WEATHERS

RUBY SMITH  
MARY ELLEN WHEATON

MARGIE LOU THOMAS  
BETTY WILSON

BETTY LOU UHL  
MARGERY WILSON

JANE VOIGT

PHYLLIS VOORHIES

**P**OISED, CHARMING, and beautiful are three words which well describe the Penta Taus. Miss Camilla Nance, sponsor, and Dimple Dunford, president, fit all of them and add several of their own to the list. However, neither their talent nor that of their club members is limited to the cultivation of a gracious manner. Charlotte Armstrong, Mary K. Clark (Dark Agnes), and Jane Voigt (Blonde Agnes) lend harmony to Ward-Belmont ears in tune to the Captivators. The tennis cup sits proudly on the Penta Tau mantel because of the ability of Margery Wilson, tennis champ, and Mary K. Clark and Margie Eichenlaub, who also bring net results. The honor roll never fails to list the names of charming Nancy Fischer and little Mary Dawson, who is also president of the preparatory school council and a varsity bowler. Nancy has proven her versatility by membership in the council, in the Turf and Tanbark Club, and in the field of better-than-amateur photography.

In the field of personal appearance, fiery-headed Betty Wilson, Winnie Belcher, Phyllis Jopp, Betty Uhl, Sally

Mayfield, and Margie Lou Thomas, also second semester proctor of Founders Hall.

The Penta Taus prove beyond the shadow of a doubt that the modern American college girl can achieve glamour from sports, executive positions, and scholarship as well as from beauty, poise, and charm. No higher compliment may be paid the Penta Taus than that their appearance is a crowning achievement to their campus life.



#### OFFICERS

*President*.....DIMPLE DUNFORD  
*Vice-President*.....BETTY UHL  
*Secretary*.....MARY BLANKENHORN  
*Treasurer*.....CHARLOTTE ARMSTRONG  
*Sergeant at Arms*.....BETTY WILSON  
*Sponsor*.....MISS CAMILLA NANCE

# T. C. CLUB



MISS BETTY JANE SEHMANN  
*Sponsor*

IRMA BIEL  
*President*

MARY ARNOLD  
CHARLOTTE CALDWELL  
RUTH GIVENS

LUCILLE ASH  
ELIZABETH CAREY  
BETTY GRABIEL

IRMA KATHERYN BIEL  
DORRIS DANIELS  
MARY GRABIEL

SARAH BORBOUM  
JERE DAVIDSON  
CAROLYN GWALTNEY

VIRGINIA MAE BROOKS  
MARY GRACE ENGLISH  
JOYCE HARPER

SHIRLEY BURTON  
JOAN FRISINGER  
ANNETTE LANGE





MARILYN LOOKADOO  
ETHEL MARY SCHWARTZ

DORIS MCCALLAM  
ERNESTINE SHEARS

MARYJO MEACHAM  
JOSEPHINE SPARKS

DOROTHY MURPHY  
RAE WRIGHT

ROSE PALMER

ANN SHERBURNE ROLFE

**A**LMOST HIDDEN behind the trees in Club Village is the Twentieth Century Club, but the talents of the girls are far from hidden. Athletics seem to prove to be their major interest but the many abilities of the different members of the club make the adjective versatile more appropriate than athletic. Sweet, popular Irma Biel and capable Miss Betty Jane Schmann, who is just plain "Miss Tillie" to the girls, cooperate in being the chosen leaders of the club.

The T. C.'s are proud of Ann Rolfe, who is president of the boarding council. Ann is not only diplomatic but makes honor roll grades, takes an active part in all sports, and is known all over the campus. The T. C.'s boast many leaders including the two proctors of Hail Hall, sincere Annette Lange, and congenial Ethel Mary Schwartz, who is "Swartzy" to all her friends, which includes everyone. Blonde Carolyn Gwaltney looks more like a glamour girl than the president of the Junior-Middle class, but proves that she's worthy of her office by her high scholastic average. "Ernie" Shears and Rae Wright play hockey as well as they play basketball, and hit a baseball as well as they blow a horn, while Jo Sparks swims and toe dances with equal perfection. Not a sweeter high C is sung than

that of tiny Elizabeth Carey, and Mary Arnold shares vocal honors with her. The Grabel sisters, Mary and Betty, are both lively girls who throw a fast bowling ball, and are often referred to as Gabby and Gabby, Jr.

How can the feeling be expressed that these girls have for their club? You feel it when you walk in the door; a warm atmosphere surrounds you which breathes love and companionship. To realize fully the mutual feeling the members of the T. C. Club have for each other you must hear the ring in their voices when they sing the closing bar of their club song—"So here's to our dear old T. C.—we love you!"



### OFFICERS

- President..... IRMA BIEL
- Vice-President..... JO SPARKS
- Secretary..... JOYCE HARPER
- Treasurer..... SHIRLEY BURTON
- Sergeant at Arms..... MARY ARNOLD
- Sponsor..... MISS BETTY JANE SEHMANN



# TRIAD CLUB



MISS MARTHA ORDWAY

*Sponsor*

NANCY GUNN

*President*

KARIN ADAMS  
OLIVIA CHILTON  
ELIZABETH GRAVES

JANE ANDERSON  
GENE CRAIN  
MARTHA GRISSIM

MARTHA BORGES  
ANN DIEHL  
NANCY GUNN

ROBERTA BRANDON  
MARY EAGLE  
ANN HALEY

BETTY BARTON BROWN  
PEGGY FOX  
JOANNE HAMPTON

MAY CALDWELL  
EVELYN FULFORD  
PATTY HARDISON





ALICE HARGIS  
AILEEN McCABE  
DELIANN TOLLIVER

A. MARIAN HASTY  
BEVERLY PEARSON  
CAROLYN WALKER

JANE HAYNES  
JEAN POTTER  
MARY WALKER

EMMIE JACKSON  
LELIA SARGENT  
AZILE WHITTEMORE

MANDALEE LINTON  
DOROTHY STEGMEIR  
MARY WALTON WRIGHT

JOAN LOONEY  
VIRGINIA TATE  
EDITH ANN YOUNG

**V**IVACIOUS NANCY GUNN is their president and personality plus Martha Ordway is their sponsor and their name is the Triad Club. A day student organization, the triumphant Triads are proud of themselves for their year's activity and with better than average reason to be. Possessing such members as star athletes Roberta Brandon and Alice Hargis, such beauties as Jane Haynes and little Libby Graves, such popularity queens as Olivia Chilton and Martha Borches, and such potential Einsteins as Mary Eagle and Ann Haley who is day student editor of MILESTONES, the Triads are forging ahead with each year of their exemplary existence.

Because they believe in giving each member her due recognition, Triads have also decided that Mary Walker is the most courteous girl they know, and that Jane Anderson is the most generous. No small honor is it to be tactful as Frances Capps and Aileen McCabe or as fashionable as Joanne Hampton and Jean Potter. Running the ABC's

of activity, the Triads also enter the field of sports with tennis contender Mary Walton Wright, the field of appearance with Virginia Tate, and the field of day student cooperation with a club spirit that ranks as one of the best. Three is a lucky number, say the sages of yore, and Triad is as certainly a lucky choice for any potential day student club member at Ward-Belmont in 1941 or in any year to come.



#### OFFICERS

*President*-----NANCY GUNN  
*Vice-President*-----VIRGINIA TATE  
*Secretary*-----MARTHA BORCHES  
*Treasurer*-----MARY WALTON WRIGHT  
*Sergeant at Arms*-----JOANNE HAMPTON  
*Sponsor*-----MISS MARTHA ORDWAY

# TRIK CLUB



VIRGINIA THOMISON  
*President*

MISS CATHERINE E. MORRISON  
*Sponsor*



WAYER ADAMS  
JERRY COLE  
BEVERLY FROMAN

WILNA BASKIN  
KATHLEEN COFFEY  
HOPE HAMILTON

ADA JANE BUFORD  
ROBERTA DORTCH  
NANCY HAMNER

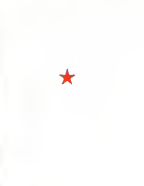
ETHEL BUTTERWECK  
ELVA DYER  
PAULA LECKE

CONNIE CLARK  
ELEANOR FAIN  
LUCILE MCDUFFIE

MARY ALICE CLARK  
JULIE FLUENT  
KATHLEEN McGEHEE







MARTHA MOORE  
BESS SCOVERN

MARTHA JAYNE MOORE  
JANE SCOVERN

MARY NEES  
JEAN SMITH

DIANTHA NORRIS  
VIRGINIA THOMISON

MADGE PHILLIPS  
BETTY LOU WAGNER

DOROTHY POWELL

**S**INCE TIME IMMEMORIAL, the Tri K's have been noted for their athletic prowess and the array of cups above their fireplace is proof of their skill. But last year something happened and the astonished club members found that Ethel Butterweck had been chosen president of the Athletic Association, Martha Moore was president of the Senior class, Kathleen Coffey, treasurer; Elva Dyer, the new president of the orchestra; Roberta Dortch, editor of MILESTONES; Beverly Froman, assistant art editor; and in short, the major offices on campus had somehow been appropriated by the same club which this year led consistently once more in athletic points.

The Tri K boom was not as startling, however, to those "in the know" who had long ago foreseen that with Miss Catherine Morrison as sponsor and with vivacious Virginia Thomison as president, the club could not avoid making a name for itself in 1940-1941. This year members, of course, made varsity in various sports and won athletic awards right and left. Waver Adams achieved the bowling varsity, "Tommy" and Ethel Butterweck

starred in basketball, and Connie Clark made swimming and dancing a joy to behold.

The Senior-Middle members, too, contributed their share. Lindy Baskin and Windy Wagner could be counted on for any emergency. Paula Lecke did her bit on the student council as proctor of Fidelity Hall, second semester, "Peaches" Norris was not to be resisted in any sport, the Scovern twins excelled both in ability and appearance, and Mary Nees proved that she is a harpist of no mean ability. The Tri K's are widening their range of accomplishments in a manner that will make other clubs look to their laurels with an anxious eye.



OFFICERS

- President-----VIRGINIA THOMISON
- Vice-President-----WAVER ADAMS
- Secretary-----KATHLEEN COFFEY
- Treasurer-----ELVA DYER
- Sponsor-----MISS CATHERINE E. MORRISON

# X . L . CLUB



MARY ELIZABETH MASENGILL  
*President*  
MRS. DOROTHY NELSON GREGG  
*Sponsor*



MARY BAUMAN MARIAN CONWAY MARGARET JOSEPHINE HAYMAN	MARY JANE BECKER MARTHA LOUISE DANIEL MARGARET HEPNER	CATHERINE BRAHAN MARJORIE DUDLEY TEDDY ROSE HESS	HELEN MARIE CAMP PATRICIA FRY DOROTHY HILL	MARY AILEEN COCHRAN SUZANNE GIBSON ELIZABETH ANN HOFFMAN	SALLY LESLIE CONRAD EDWINA MAE GRAFF ELOISE JENSEN
---	---	--	--	--	--





DOROTHY L. McCracken  
CARLENE RICE

ANN MAHAN  
GERALDINE SMITH

MARY ELIZABETH MASENGILL  
MARGUERITE V. WALTON

ROSA LEE MOOSE

MARION MULVENA

DOROTHE PASCOE

**F**ROM BAUMAN to Walton, from Masengill to Gregg, the X. L. Club is tops on the campus. Such a bald statement needs only the achievement of Mary Bauman in hockey, basketball, swimming, and as George on Washington Day; or the marvels performed by "Massy" in drama and cosmetology. Sponsored by Mrs. Dorothy Gregg, as gracious as she is clever, the X. L.'s can boast of a riding cup, a swimming cup, and a basketball cup as well. It takes only Mary Jane Becker in the riding ring, Helen Marie Camp on the basketball court, Martha Daniel swinging out with a marimba, Dotty McCracken, treasurer of the Senior class, Pat Fry, first semester proctor of Founders Hall, "Cocky" Cochran, editor of *Hyphen*, and "Carlee" Rice, Dot Pascoe, Eloise Jensen, and Libby Hoffman for an out and out good time.

The X. L. open house called out eighty or ninety fraternity heroes; their club week ends have been not only frequent but successful; and the spring spruce-up of their

clubhouse has lasted through the season because the X. L.'s are conscientious and proud of their record.

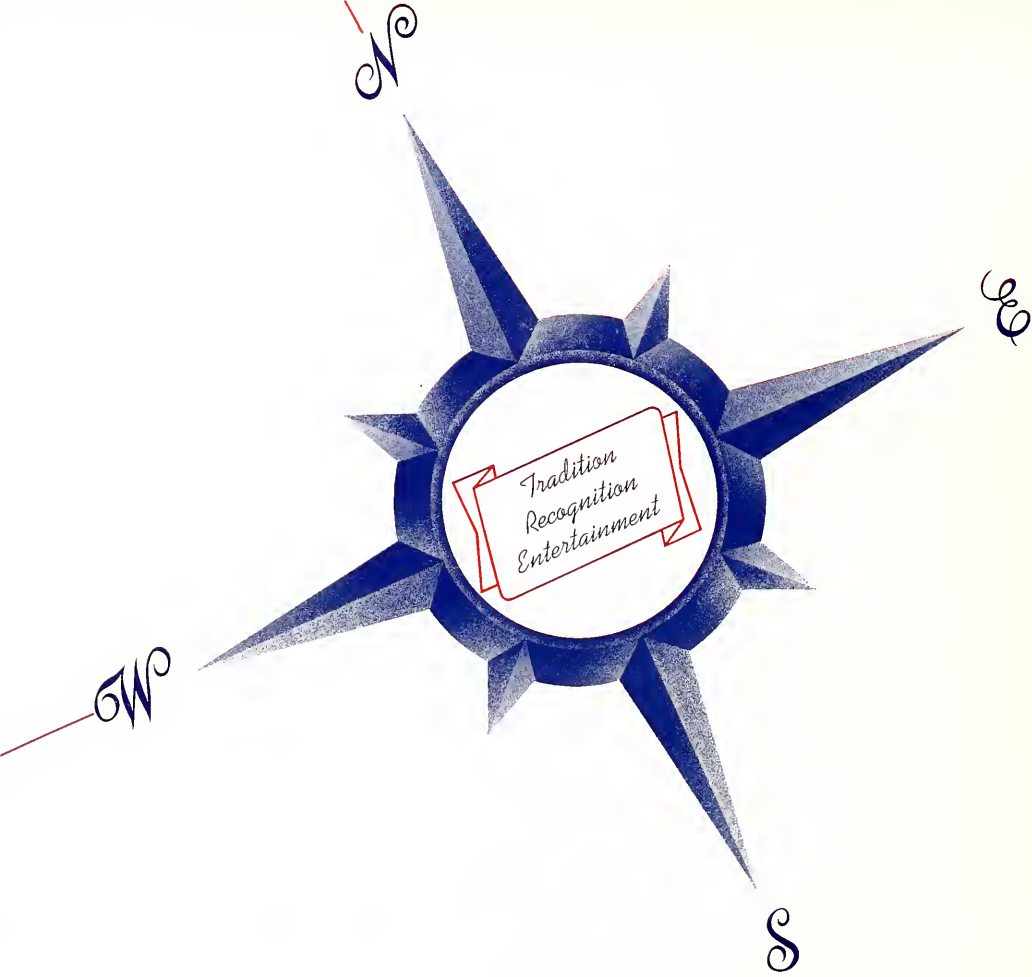
In beauty, brains, charm, and ability the X. L.'s excel and in so doing live up to their name in 1941 as in every year, at Ward-Belmont and abroad. There as well as here their records speak for themselves.



OFFICERS

- President*-----MARY ELIZABETH MASENGILL
- Vice-President*-----CARLENE RICE
- Secretary*-----EDWINA GRAFF
- Treasurer*-----MARTHA DANIEL
- Sponsor*-----MRS. DOROTHY NELSON GREGG





Tradition  
Recognition  
Entertainment

*from your*





f e a t u r e s



*Osirons, Penta Taus, A. K.'s, and Agoras pledge themselves to a year of fun*

## FAG DAY

Old girls at Ward-Belmont are in the height of their glory each fall when Fag Day rolls around and new club members are put through hilarious paces in informal initiation into the group of their choice. Startled visitors and bewildered servants are always intrigued by the stupendous, colossal, and enormous absurdity of erstwhile sophisticated young things tripping about the campus garbed in elephant trunks, green crepe paper, or nightgowns of ancient vintage.

Each club has its own tradition as to methods of madness, but all require pledges to report to fag mothers' rooms at seven in the morning, clean the room thoroughly, and trudge about the campus shrieking idiotic poetry, songs, and monotonous chants such as "Now I'm an X. L. baby, soon I'll be an X. L. lady."

At long last, exhausted and disheveled, the mob descends on the dining room for sips of orange juice and dry toast handed down to seated initiates by club members who revel in the novelty of being queens of the campus, even if the monarchy lasts only a day.



*F. F.'s and X. L.'s, bewildered, beaming, and obedient*



*Anti-Pans, T. C.'s, Tri K's, and Del Vers agonize through a rip-roaring pledge fracas*





*Ward-Belmont is symbolized in the hands of its organizations*

## CLASS RECOGNITION DAY

Unusual to Ward-Belmont is the annual fall ceremony which consists of a recognition of each class in group and individual style. Around the circle march Seniors, Senior-Middles, Junior-Middles, Juniors, Sophomores, and Freshmen dressed in class colors and filled with the importance of the first all-school ritual of the year.

On the broad green lawns of the campus, students stand at attention as representatives of every department are recognized by their school, Dr. Provine addresses his collective proteges and the Ward-Belmont pledge is sung.

Brain child of a former member of Ward-Belmont's vast family circle, Class Recognition Day has come to mean much both to new girls who find class loyalty for the first time that day and to old girls who renew their school spirit in a novel way.

Ward-Belmont is no recent innovation, nor for that matter is Recognition Day. Both have traditions which make them outstanding any time, any place, anywhere.



*Classes assemble to honor their school*



*Onward they march to the sound of the chimes, with class loyalty foremost in each mind*

---

---

## BIRTHDAY DINNERS

---

---



*A gala celebration marked by beautiful decorations, the best of food, and a circle of friendship*



*Something new and different for every month of birthdays*

To those who spend their first birthday away from home, Ward-Belmont birthday dinners are a vision of delight and the best panacea for "home town blues." Although the evenings are spent formally, there is nothing formal about either the conversation nor the meal, beautifully served.

Guests are met and greeted in stately Acklen Hall by President and Mrs. Burk, Dr. and Mrs. Provine, and Miss Taylor. High spot of the evening aside from fried chicken and rich cakes is always the table decoration, varied to suit the month with roses, chrysanthemums, and even gilded sprays of leaves. Tiny place cards and unusual favors are trophies carried away by each diner as well as the remembrance of a beautiful evening well spent.



# WASHINGTON'S BIRTHDAY



*Martha and George preside over a lovely evening*



An impressive day on the calendar of Ward-Belmont is February 22. For on this day the clock turns back to those beautiful days of colonial America when George Washington and his charming wife, Martha, led the minuet to the strains of one of Strauss' waltzes. The honor at Ward-Belmont of being George or Martha is one of the greatest of the entire year. Mary Bauman was chosen as George, and Martha was brought to life again in the person of Molly Bellamy. The picture of Martha and George walking hand in hand down the staircase in Acklen Hall will never be forgotten. Afterwards the entire student body celebrated the occasion with a birthday dinner in honor of George. The Seniors danced the minuet.



*The most glamorous couple for 200 years*





*The Seniors preview a gruesome victory*



*"Bau" strikes as bows are drawn to send Seniors to victory*



*Waiting for the starting whistle*

## SENIOR - SENIOR -

To the tune of Senior-Middle chants and the Senior class song Senior-Senior-Middle Day swung into action early on the afternoon of April 8. Timidly the sun appeared, then more confidently as an interested spectator to the nonsensical rampage of a college student body gone berserk.

First-year paraders flowed in a long purple line about the circle, bolstered by the appearance of a victory float bearing a triumphant Senior-Middle and a hopelessly out-classed Senior, patiently rocking as she knitted. Yet the Seniors, not to be outdone, marshalled forces to assert ultimate victory inspired by a flower float of officers and mascot, Christina Provine; the limp body of a defeated opponent; and the rigid scholarly figure of Mary Liz Masengill as "Experience '41."

True to their boast, the Seniors won baseball by a comfortable majority; shrieked themselves hoarse in the tennis singles and doubles; were mute in admiration of champions of the bow and arrow; and cheered a damp



*Dr. Burk finishes off an ultra-modern evening*



*Hand in hand, with high hopes, Senior-Mids are out for Senior scalps*

## MIDDLE EVENTS

but undaunted Senior team on to victory in water polo. Previous games in basketball and bowling had resulted in a tie for both classes, but Senior supremacy was assured in the April fracas, although decoration honors were awarded the Senior-Middles.

At the intersection of Fifth Avenue and Forty-Second Street on the evening of March 21, the twin cities of New York and Senior City gathered to celebrate an annual festivity commonly known as the Senior-Senior-Middle Banquet. Diners entered a taper-lit dining room past the brightly-lighted shop windows of Saks Fifth Avenue, Tiffany's, and Dobbs. The latest in furniture, suits, and floral display were all exhibited to the bewildered eyes of city dwellers who took their seats at small tables ornamented in approved dinner club style and settled down for an evening's entertainment.



*V. Love and the water poloists play the game with scissor kick and backhand*



*New York moves to Nashville—one night stand*

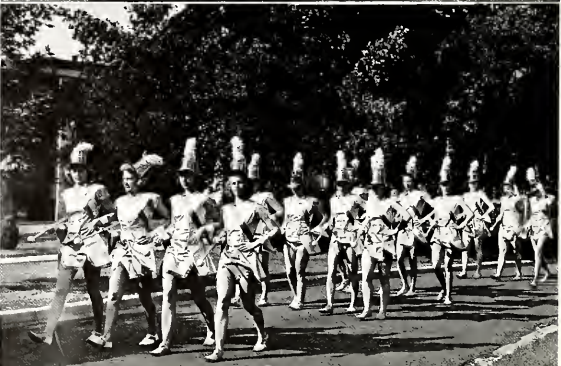
Page One Hundred Fifteen



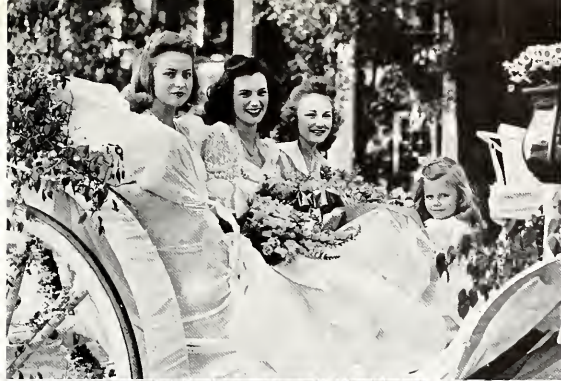
*Senior-Mids offer fervent pre-game prayers*



# May Day







★ Made to order both for timeliness and appropriateness to the 1941 MILESTONES, May Day this year flaunted Ward-Belmont patriotism in the faces of several thousand students and guests during the latter days of May. Combining the pastel patterns of spring and the colorful brilliance of red, white, and blue, the afternoon's festivities opened with a lengthy procession containing each dancer fittingly arrayed, heralds, pages, preparatory and college seniors, and last but by no means least, the May Queen, Mary Elizabeth Masengill, beautifully gowned in traditional white, seated in the queen's coach with her college and preparatory school attendants, Molly Bellamy and Carolyn Gwaltney, blonde contrasts to the gypsy-haired queen.

Passing from the dreamy rhythm of the Golden Ball, Springtime, the Orchid Ballet, and Ballet du Reve, the dances, under the direction of tireless Miss Mary Elizabeth Delaney, melted into the strident syncopation of Military Tap on Drums, Ballet Militaire, and Red Cross Nurses with the remarkable agility of Louise Jahnce featured in Jack Tar.

Climax of the celebration was, as a matter of course, the May Pole dance presented by dance students to weave the bright strands of Ward-Belmont's most striking pageant into a triumphant whole.



**The May Queen**  
*Mary Elizabeth Masengill*





**The Queen's Attendants**

*High School Maid . . . . Carolyn Gwaltney*

*College Maid . . . . . Molly Bellamy*



# The Star Parade



★ **Versatile** . . . Louise Jahneke, high priestess of the Terpsichorean art . . . lithe, graceful . . . leader in every field . . . shining hair, gray eyes . . . quiet, friendship-holding personality.



★ **Loyal** . . . Martha Moore, tiny hands, warm heart, curly head . . . patriot to her finger tips . . . gentle and gracious, the perfect hostess . . . her school and her class come first.

★ **Original** . . . Nancy Fischer, brown-eyed blonde who photographs as well as she does the job for MILESTONES . . . artist in appearance and action . . . friendly, good-natured, sensible.



★ **Witty** . . . Jean Bloom, mighty madcap, diminutive demon of dry humor . . . Jean in boots, Jean in a crew cut, Jean in jeans . . . "Blossom" the reigning favorite with a finger in every campus pie.



★ **Vivacious** . . . Betty Grabel, known only as "Gabby" . . . joyous as a puppy . . . bubbling over with a zest for living . . . athletic ability and disposition, A plus.



★ **Sincere** . . . fluffy Nancy Young . . . "Y" leader perfect for her role . . . teddy bear size . . . generous, kindly, beloved . . . no job too difficult, no service too great.



★ **Dependable** . . . Virginia Love Graves, charming little armful . . . pocket edition V. Love . . . campus outstander of four-star merit . . . athletic, ambitious, appealing . . . one of Ward-Belmont's first ladies.



★ **Popular** . . . Mary Bauman, tall, supple, drawl like thick molasses . . . cheerful campus idol . . . goddess of swing . . . George Washington reincarnated, North Carolina personified.



★ **Diplomatic** . . . Ann Rolfe, chief justice of the student council . . . she of the flashing dark eyes and military record . . . fair, honest, champion of the downtrodden . . . enthusiastic and reliable.





★ **Charming** . . . Mary Elizabeth Masengill . . . "Massy" it is with the cloud of black hair and provocative gleam . . . eye-ful on or off stage . . . captivator in poise and wicked glee.



★ **Considerate** . . . Roberta Dortch, MILESTONES' Irish-eyed editor . . . thoughtful, talented . . . hands equally gifted with pencil or keyboard . . . attractive, deft manager in any position.



★ **Athletic** . . . Virginia Thomison . . . sparkling Tommy of the wide smile . . . she lives for her club and her sports . . . first varsity on any campus . . . pixie and president.



★ **Fashionable** . . . Scovern twins, Bess and Jane . . . always fresh, always well-dressed . . . an unbeatable combination of vogue and vitality . . . casually smart, definitely swell.



★ **Intellectual** . . . Patty Johnson, height of dependability . . . efficient, alert . . . Danish blue eyes and ash blonde hair . . . firm believer in the power of the press.





## ENSEMBLE GIRL

Mary Bauman, a girl with an aura of being something special, came as a Senior-Middle to Ward-Belmont and within two weeks was the most talked-of girl on the campus. As the culmination of her history here she has been awarded the greatest tribute within the power of the school. Blessed with an effervescent personality, she is the best of athletes, dancers, and friends. A harmony of golden tan, brunette beauty, and charm, she has walked into each life at Ward-Belmont and left it with a precious memory of the perfect campus leader.

---

---

## STEP SINGING

---

---



*Seniors join in a great tradition to sing out the old and herald the new*



*Small, dark, and tuneful, Dimp leads the Seniors in a last farewell*

May is a mad whirl of events at Ward-Belmont. Every day, every hour finds new jobs, new entertainment for busy belles. But when May melts into June and the hour of parting has come at last, Seniors and Senior-Middles alike are torn between emotions of grief and bliss. Grief in the memory of old friends and bliss in the thought of another year of accomplishment for themselves and their school.

Senior-Middles have no graduation morning but its place is well taken by another ceremony with the Seniors, that of step singing on the pillared porch of Blanton Building a few short days before departure. With the surge of loyalty that music and harmony so aptly express, the Senior-Middles laud their older sisters with a group of familiar melodies against a background of chimes. Parting words are each year tearfully sung by the Seniors, this year led by tiny Dimple Dunford.

Tradition, too, is the annual gift of the graduating class, so this year as always the class of 1941 presented to the school a permanent memory of itself and its respect for Ward-Belmont.

In a ritual as solemn to the young collegians as the inauguration of a president is to a democracy, Ward-Belmont students have a healthy regard for precedent and a love of their school that will not soon fade into oblivion.

---

---

# GRADUATION

---

---



*For the last time they mount the stone steps to beautiful Acklen Hall*



Two by two the Seniors of 1941 have marched up the long, magnolia-lined walk from Blanton Building to Acklen Hall and with them walk silently the remembrances of their first years of college life. Each graduate holds in her heart as she keeps time with her partner the thoughts of the first week of school, club pledging, initiating, her class picnic, skating parties, ball parties, dances, and special celebrations that have somehow in the brief two years become so much a part of her life.

Each Ward-Belmont belle of the class cannot help but think, as she passes through the arch of the little iron summer house, of the century of knowledge and charm that have created her school as it is today. Memories crowd her mind, as the diploma is placed in her hand and President Burk smiles his approval, of warm, spring days on the campus, the fun of club week ends, open houses, the palatable delights of her birthday dinner, and a thousand-and-one incidents and heart-to-heart talks never to return.

And so she graduates, this Senior of 1941, and with her graduates a great store of accumulated knowledge, poise, grace, and charm that will mark her for the rest of her life as a graduate of Ward-Belmont.



*It's all over but the shouting*



1. I got those P. O. blues . . . 2. "Honest, he's my brother!" . . . 3. Worth flying for . . . 4. Berta pounds it out for Merly . . . 5. Darn these chin rubbers, Rit . . . 6. "Just go three halls to your left and turn right" . . .



7. V. Love tickles them . . . 8. Santa Claus, here we come! . . . 9. "I took a trip on a train" . . . 10. Don't let this fool you.



# M I L E S T O N E S



1. Diane and Peggy step into character . . . 2. Election upset at Ward-Belmont . . . 3. Problem-solver Dean Provine . . . 4. "Now, girls, stand tall" . . . 5. Martha writes home . . . 6. "Oh, boy, a strike!" . . . 7. How Milestones is made . . . 8. Drama on the air . . . 9. Why,



10. Gals and grillwork . . . 11. Mrs. Powell and Martha serve the Senior tea . . . 12. How Mary K. blows up the lab . . . 13. Call between four and six, Char—

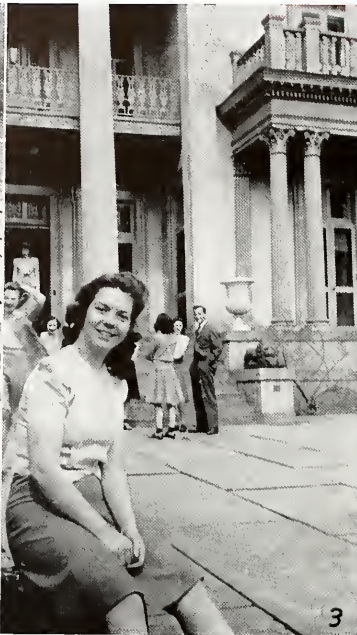




1. Watch the Tri K sunburns go by . . . 2. Oh, look at the—pig . . . 3. Saturday afternoon date-waiters . . . 4. La Cucaracha Cayce . . . 5. Hang your clothes on a hickory limb . . . 6. Solid comfort . . . 7. 220 and 222 out on bail . . . 8. Which is which? . . . 9. Three little



gals from school . . . 10. Aw, quit bragging . . . 11. The coke ritual . . . 12. Why the X. L. grade average zooms . . . 13. What's news? . . . 14. The results of having a kibitzer.



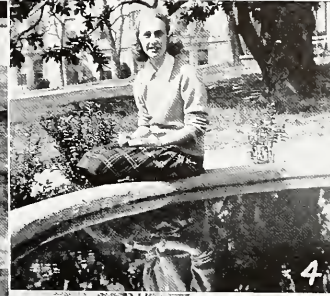
# M I L E S T O N E S



1. Blossom busy—for once . . . 2. Bets and her bubbles  
 . . . 3. "Never mind English—last nite—" . . . 4. Bunny  
 reflects . . . 5. Lock the door . . . 6. Who's showing off  
 whose wardrobe? . . . 7. Sally has test trouble . . . 8.



Berta, what about Doug? . . . 9. Ethel, look what Gabby  
 bowled! . . . 10. The May Queen munches . . . 11. Knit  
 two, purl two . . . 12. All play and some work.

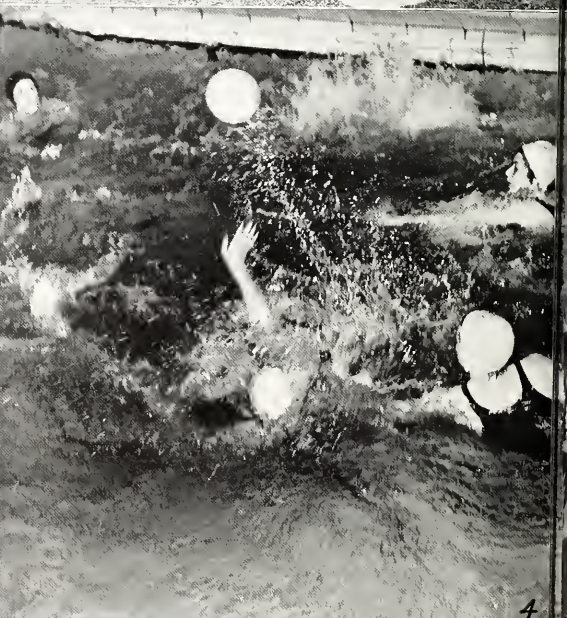




1. Mary Liz previews coming attractions . . . 2. Oh, dig their graves both wide and deep . . . 3. The cream of



the 1941 crop . . . 4. You can't tell the players without a program.



# M I L E S T O N E S



1. Kathryn and Annie lead off the grand march . . .  
 2. Prep school plus Castle Heights equals fun! . . .  
 3. Swingin' out in swing time . . . 4. Ward-Belmont is

on the air . . . 5. La Conga nights . . . 6. Corinthian  
 Room capers . . . 7. Tommy's night to shine.

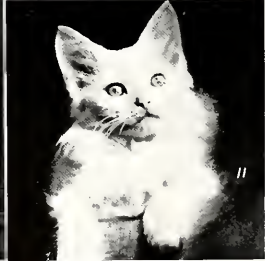




1. Four charmers . . . 2. Isn't it fun, Jean? . . . 3. The long and short of it . . . 4. G'bye now . . . 5. Now you've seen a kitty smile . . . 6. Phil and Hill . . . 7. Meet the



choir . . . 8. Gosh, what a mess! . . . 9. Holding out on us, MacDuff? . . . 10. Irrepressible Patty . . . 11. How could we forget "Kitty"? . . . 12. It's windy, Cayce.



# M I L E S T O N E S



1. Marilyn visits the Hermitage . . . 2. Dark and Blonde Agnes on the fence . . . 3. Phidias would rub his eyes in amazement . . . 4. Coney Island cross section . . . 5. Three cheers for our side . . . 6. To spare a lady's

blushes . . . 7. Blue ribbon Sal . . . 8. Mama Hay is camera shy . . . 9. Day students pick daisies . . . 10. Agora teas are justly famous . . . 11. Perfect couple for a perfect setting.



1 9 4 1

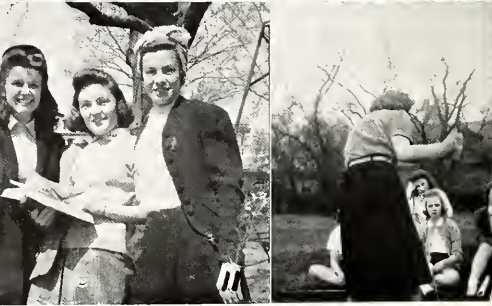




1. Dr. Hollinshead blossoms out for his Seniors . . . 2. Convertibles draw crowds . . . 3. Dale will be cheerin' for her Senior-Mids . . . 4. Time out for the camera fiend . . . 5. Patsy and pals . . . 6. Awaiting the big event . . .



7. The only time they need brass knuckles . . . 8. Happy combination: X. L. Senior-Mids . . . 9. "Go away! you're killin' us" . . . 10. Keep your eye on the ball . . . 11. Pre-test jitters . . . 12. Is it sinking in, Miss Tillie?



# M I L E S T O N E S



1. The Southern Belles and the singing strings . . .
2. Nativity tableau caps the Christmas climax . . .
3. "So then I said" . . . 4. Four to take the cake . . .
5. Mrs. Handley and Mrs. Bryan belong to us all . . .
6. Havana, here we come! . . . 7. Misses Morrison and



- Nance in a tearing hurry . . . 8. Connie and Cilly caught
- in the act . . . 9. Grace Moore returns for tea . . . 10.
- Seven steps from Heaven . . . 11. Prep school party
- line . . . 12. Oooh, look, cheese and olive!



# SENIOR ADDRESSES



ADAMS, MOZELLE	Madison, Tenn.	HOWELL, BETTY	Eighth and Euclid, Eldorado, Ark.
AOAMS, WAVER	Copper Kettle, Jacksonville Beach, Fla.	HUMPHRIES, Betsy ANN	185 W. Winter St., Delaware, Ohio
ALLEN, MARTHA	c/o Major Campbell Brown, Lynnwood Blvd., Nashville, Tenn.	JAHNCKE, LOUISE	1807 Calhoun St., New Orleans, La.
ALLISON, SHIRLEY	1654 West 104th St., Chicago, Ill.	JOHNSON, GERALDINE	Highland Court, Apartment 12, Seventeenth Avenue, S., Nashville, Tenn.
ARMSTRONG, CHARLOTTE	Martel, Tenn.	JOHNSON, PATRICIA	1220 Washington St., Cedar Falls, Iowa
ASH, LUCILLE	Bastrop, Texas	JONES, ELIZABETH	1715 Linden Ave., Nashville, Tenn.
BAUMAN, MARY	Lookout Road, Montreat, N. C.	JOFF, PHYLLIS	1621 Stone St., Flint, Mich.
BECKER, MARY JANE	6227 Northwood, St. Louis, Mo.	KENT, KATHRYN	3313 Harding Road, Nashville, Tenn.
BELCHER, WINIFREDE	15 Norwood Road, Charleston, W. Va.	KING, MILDRED	1111 Glenwood Ave., Nashville, Tenn.
BELLAMY, MOLLY	Knoxville, Iowa	KIRKLIN, MARY	1104 7th St., S. W., Rochester, Minn.
BIEL, IRMA KATHERYN	710 Furman, Corpus Christi, Texas	KNEPP, MARY ELIZABETH	1852 McKinley Ave., Bay City, Mich.
BLOOM, JEAN	3719 West Markham St., Little Rock, Ark.	LANDIS, NANCY JANE	219 Chilton Ave., Nashville, Tenn.
BRYANT, CAROL	21700 Cherryhill Road, Dearborn, Mich.	LASSETER, NANCY	2809 Hillside Drive, Nashville, Tenn.
BURTON, SHIRLEY	Military Highway, Alexandria, La.	LORD, LOUISE	Woodberry Forest, Va.
BUTTERWECK, ETHEL	Brookline Road, Scarsdale, N. Y.	McCALLAM, DORIS	Quarters No. 184, Ft. Sill, Okla.
CALDWELL, MARTHA LYNN	Box 287, Jackson, Tenn.	MCCRACKEN, DOROTHY	Cedar Lane, Pulaski, Tenn.
CHAMBERS, MARJORY TOM	Antioch, Tenn.	McCULLOUGH, SARA	132 Kenner Ave., Nashville, Tenn.
CHARLTON, MARY FRANCES	2015 20th Ave., S., Nashville, Tenn.	McDUFFIE, LUCILE	1304 E. 10th St., Columbus, Ga.
CLARE, CONNIE	2241 McFaddin St., Beaumont, Texas	MANEY, JEAN	1801 19th Ave., S., Nashville, Tenn.
CLARE, MARY KATHERYN	405 Somerset, Webster Groves, Mo.	MASENGILL, MARY ELIZABETH	728 W. Locust St., Johnson City, Tenn.
CLELAND, ELIZABETH	341 Webster Ave., Winter Park, Fla.	MITCHELL, HELEN	3504 Yoakum Blvd., Houston, Texas
COCHRAN, MARY AILEEN	Rolla, Missouri	MOORE, MARTHA	605 Elmdale Road, Chillicothe, Mo.
COFFEY, KATHLEEN	1700 Ivanhoe Blvd., Orlando, Fla.	MORLEY, JANE	408 Walnut St., Three Rivers, Mich.
COLLINS, VIRGINIA	Hobbs Road, Nashville, Tenn.	OSMENT, JESSIE	3824 Richland Ave., Nashville, Tenn.
COONEY, BETTY B.	2001 Linden Avenue, Nashville, Tenn.	PARDUE, JOSEPHINE	3105 Dudley Ave., Nashville, Tenn.
COTTEN, VIRGINIA	208 E. Oak St., Weatherford, Texas	PEERY, ST. CLAIR	Tazewell, Va.
COTTOM, JANE	812 Cecil Ave., Louisville, Ky.	PHILLIPS, MADGE	7279 Artesian St., Detroit, Mich.
CRAIN, MARY GENE	1112 McKennie Ave., Nashville, Tenn.	PLUMMER, MARGARET	827 8th St., S. W., Rochester, Minn.
CURTISS, BETTY	1216 17th Ave., S., Nashville, Tenn.	POTTER, JEAN	Franklin Road, "Trecmont," Nashville, Tenn.
DANIELS, DORRIS	233 Highland, Ripley, Tenn.	QUARLES, BETTY	Hampton Ave., Nashville, Tenn.
DEMME, LAURA	Ft. Thomas, Ky.	RICE, CARLENE	2108 Washington Blvd., Kansas City, Kans.
DORRIS, DOROTHY	1200 North 14th St., Nashville, Tenn.	ROCKETT, NELL	Clanton, Ala.
DORTCH, ROBERTA	Scott, Ark.	ROLFE, ANN	Quarters 248, Ft. Sill, Okla.
DUNFORD, DIMPLE	632 Audubon Drive, Clayton, Mo.	ROLFE, JEANE	1906 Elliott Ave., Nashville, Tenn.
DYER, ELVA	Bartley, W. Va.	SALISBURY, JAN	2433 Sheridan Ave., S., Minneapolis, Minn.
FAIN, ELEANOR	903 9th St., Leesburg, Fla.	SHAW, PENNY	2026 Hill St., Ann Arbor, Mich.
FITCHHORN, DOROTHY	193 N. Sandusky St., Delaware, Ohio	SMITH, MARTHA ELIZABETH	1144 Madison, Clarksville, Tenn.
FROMAN, BEVERLY	5434 Central, Kansas City, Mo.	SPANGLER, ELLEN	364 N. Third Notch St., Troy, Ala.
GAINES, CATHERINE	528 E. Main St., Georgetown, Ky.	SPARKS, JOSEPHINE	1230 Second St., Corpus Christi, Texas
GIVENS, RUTH	Route 3, Trenton, Tenn.	STEENBURG, SUSAN JANE	1107 8th St., Aurora, Nebr.
GLICK, DOROTHY	572 Stratton St., Logan, W. Va.	STEGMEIR, DOROTHY	Hampton Ave., Nashville, Tenn.
GRABIEL, BETTY	609 N. Main St., Bellefontaine, Ohio	STEPHANY, DOROTHY	Cordova Apts., Baltimore, Md.
GRAFF, EDWINA	Mount Hope, W. Va.	STOVALL, ALICE	2007 20th Ave., S., Nashville, Tenn.
GRAVES, ELIZABETH	4806 Nebraska Ave., Nashville, Tenn.	THOMAS, SARAH	1506 8th St., Sylacauga, Ala.
GRAVES, VIRGINIA LOVE	Hampton Ave., Nashville, Tenn.	THOMSON, VIRGINIA	6 North Jackson, Athens, Tenn.
GRAY, GERALDINE	Gale Lane, Nashville, Tenn.	VINCENT, ELAINE	1507 Cedar Lane, Nashville, Tenn.
GRISS, MARTHA	1022 Woodmont Blvd., Nashville, Tenn.	VOHL, JANET	907 Highland Ave., Jackson, Tenn.
GRISSO, PAULINE	R. R. No. 2, Seminole, Okla.	VOIGT, JANE	232 Way Avenue, Kirkwood, Mo.
GUNN, NANCY	Valley Brook Road, Nashville, Tenn.	VOORHIES, PHYLLIS	21 Fairlawn Ave., Youngstown, Ohio
HALEY, ANN	3505 Gillespie Ave., Nashville, Tenn.	WAGGENER, NANCY	1509 Bernard Ave., Nashville, Tenn.
HALEY, MARJORIE	506 N. Thornton, Algona, Iowa	WARD, HELEN	1349 Elm St., Denver, Colo.
HARTON, ALICE	300 Jackson St., Columbus, Ind.	WHEELER, FRANCES	568 E. Spring St., Gainesville, Ga.
HENLEY, MARY ELIZABETH	1711 Ashwood Ave., Nashville, Tenn.	WINNIA, DIANE	1805 Acklen Ave., Nashville, Tenn.
HEROLD, LUCERNE	302 North Bluff, Anthony, Kans.	WRIGHT, PEGGY	Curtis Wood Lane, Nashville, Tenn.
HILL, DOROTHY	1634 Laurel Ave., Knoxville, Tenn.	YOUNG, NANCY	Morgan St., Morganfield, Ky.
HORTON, RUTH	Morningside, Morristown, Tenn.		

# ALPHABETICAL INDEX



	<i>Page</i>		<i>Page</i>
Adams, Karin	102	Cooney, Betty B.	32, 84
Adams, Mozelle	30, 56, 72, 88	Cooper, Kathryn Love	88
Adams, Pat	86	Core, Anne	12, 88
Adams, Waver	30, 74, 104	Cotten, Virginia	32, 86
Addington, Suzanne	92	Cotton, Jane	32, 35, 80
Allen, Martha	30, 51, 92	Cowan, Mary Helen	94
Allison, Miss Annie C.	30, 80	Crain, Mary Gene	32, 102
Anderson, Shirley	30, 80	Cresson, Ruth Carr	42, 96
Anderson, Irene	88	Crockett, Miss Louisa	22
Anderson, Jane	102	Crosby, Roberta	86
Anderson, Patricia	42, 88	Crowder, Marjorie	80
Anderson, Phoebe Jane	88	Curtiss, Betty	32, 55, 66, 92
Arbuckle, Peg	42, 82	Cutler, Miriam	96
Armstrong, Charlotte	30, 98		
Arnold, Mary	100		
Ash, Lucille	30, 100		
Atwell, Sue	86		
Awtrey, Nancy	41, 90		
Barton, Jane	84	Dallas, Sarah Polk	47, 88
Baskin, Wilna	104	Dalton, Mary	88
Batson, Ellen	53, 90	Dalton, Mr. Sydney	22
Baum, Lois	12, 52, 96	Daniel, Martha Louise	106
Bauman, Mary	30, 55, 57, 66, 72, 106, 121, 123	Daniels, Dorris	32, 100
Becker, Mary Jane	30, 106	Davis, Louise	51, 57, 67, 92
Bedelke, Mabel	80	Davis, Martha	84
Beicher, Winifrede	30, 98	Davison, Jere	42, 100
Bell, Mary Lane	42, 51, 67, 88	Davison, Peggy	51, 92
Bellamy, Molly	30, 50, 118	Dawson, Mary	42, 52, 98
Biel, Irma Kathryn	31, 100	Delaney, Miss Mary Elizabeth	22
Biggs, L'Eno	94	Demmer, Laura	3, 90
Bilbro, Katherine	92	Diehl, Ann	102
Blankenhorn, Mary	98	Dietrich, Miss Dorothy	22, 96
Bloom, Jean	31, 86, 120	Dixon, Mr. Thomas	23
Blythe, Miss Mary Venable	22	Dorris, Dorothy	33, 84
Boone, Evelyn	88	Dortch, Roberta	33, 55, 66, 104, 122
Borches, Martha	102	Douglas, Leila Owen	47, 84
Borroum, Sarah	100	Douglas, Phoebe	42, 92
Boyer, Florence	22	Douthitt, Miss Mary	23
Bracknreed, Miss Verna	22	Dudley, Marjorie	106
Brahan, Catherine	106	Dunford, Dimple	98
Brandon, Roberta	42, 67, 74, 102	Dyer, Elva	33, 104
Britt, Mary Becker	92		
Brooks, Virginia Mae	100	Eagle, Mary Russell	47, 102
Brown, Betty Barton	102	Eichenlaub, Margerie	43, 98
Brown, Florence Elizabeth	94	Eidelman, Marcia	88
Brown, Marilyn	98	Elam, Mary	86
Bruce, Martha	88	English, Mary Grace	100
Bryan, Jane	84	Ewing, Miss Frances H.	23, 84
Bryant, Carol	31, 50, 57, 90		
Bryant, Katharine	90	Fain, Eleanor	33, 104
Buchholz, Myra	104	Farr, Geraldine	23
Burk, Dr. J. E.	18	Felton, Kitty	82
Burk, Margaret Alice	67, 73, 84	Ferguson, Georgia	94
Burton, Shirley	31, 100	Fidler, Mrs. Helen King	23, 86
Butler, Jean	94	Fischer, Nancy	43, 52, 55, 98, 120
Butterweck, Ethel	31, 57, 66, 72, 104	Fitchhorn, Dorothy	53, 96
		Fluent, Julie	104
		Fountain, Mrs. Lucie	23
Caldwell, Allison	84	Fowler, Mr. Forest R.	21
Caldwell, Charlotte	67, 100	Fox, Peggy Ann	102
Caldwell, Laura	84	Fox, Vallie Jo	92
Caldwell, Martha Lynn	31, 82	Frackman, Faye	86
Caldwell, Mary Emly	67, 88	Fraser, Ann	56, 94
Caldwell, May	102	French, Pattie Frances	88
Camp, Helen Marie	72, 106	Frisinger, Joan	100
Carey, Elizabeth	100	Froman, Beverly	33, 55, 104
Carter, Jane	62	Fruchtman, Marilyn	82
Casebier, Miss Gestrude	22, 80	Fry, Patricia	50, 106
Cason, Miss Martha A.	22	Fulford, Evelyn	102
Cayman, Miss Mary Elizabeth	22, 85		
Chambers, Marjory	31, 88	Gaines, Catherine	33, 86
Chapman, Genevieve	82	Garland, June	43, 96
Charlton, Elizabeth	27, 84	Garman, Marjorie	80
Charlton, Mrs. Mary	27	Garth, Wray	80
Charlton, Mary Frances	31, 74, 84	Gentry, Harriet	43, 52, 96
Chilton, Olivia	42, 102	Gibson, Suzanne	106
Chitrick, Elaine	53, 90	Gilliam, Peggy	86
Clark, Connie	31, 54, 57, 66, 75, 104	Givens, Ruth	33, 100
Clark, Mary Alice	102	Glick, Dorothy	34, 90
Cleland, Mary Ellen	31, 98	Goosh, Marie	88
Cleveland, Elizabeth	82	Goodrich, Miss Florence	23
Cleland, Elizabeth	52, 47, 80	Gordon, Miss Louise	34, 57, 100, 121
Cochran, Mary Ellen	32, 54, 66, 106	Grabiel, Betty	74, 100
Cockrell, Adeline	92	Grabiel, Mary	34, 52, 106
Cockrill, Hazel	92	Graff, Edwina Mae	34, 53, 106
Coffey, Kathleen	92	Graves, Elizabeth	34, 102
Cole, Jerry	92, 104	Graves, Virginia Love	34, 51, 66, 67, 92, 121
Collins, Frances	94	Gray, Miss Elizabeth	27
Collins, Georgia	86	Gray, Miss Frances	23
Collins, Virginia	82	Gray, Geraldine	34, 88
Combs, Kay	82	Greenburg, Miss Nellie D.	23
Conrad, Sally	106	Greenwood, Barbara Jean	47, 56, 86
Conway, Marian	106	Greenwood, Patty	86
		Gregg, Mrs. Dorothy Nelson	24, 106
		Gresham, Genevieve	80
		Grisman, Martha	34, 102



# ALPHABETICAL INDEX



	<i>Page</i>		<i>Page</i>
Grisso, Pauline .....	34, 50, 56, 86	Lambert, Cordelia .....	52, 96
Groff, Jean .....	43, 52, 96	Lanis, Nancy Jane .....	36, 89
Gunn, Nancy .....	34, 102	Lange, Annette .....	50, 54, 100
Guthrie, Ermin .....	43, 52, 67, 73, 96	Lamer, Florence .....	94
Gwaltney, Carolyn .....	42, 43, 100, 119	Lasseter, Nancy .....	56, 84
		Laue, Marion .....	82
Hagan, Kathleen .....	84	Lawrence, Jane .....	44, 84
Hageman, Barbara .....	90	Learned, Mary Jane .....	73, 84
Hasegard, Barbara .....	50, 86	Lecke, Paula .....	50, 104
Haley, Ann .....	34, 55, 102	Lehan, June .....	45, 96
Haley, Marjorie Ann .....	35, 96	Leshe, Donna .....	45, 98
Hall, Grace Elizabeth .....	80	Lillard, Aline .....	93
Hamilton, Hope .....	53, 56, 104	Lindenbaum, Phyllis .....	56, 80
Hammer, Nancy .....	102	Linton, Mandie .....	103
Hampton, Joanne .....	102	Lobdell, Jane .....	82
Hardison, Patty .....	102	Long, Shirley .....	94
Hargis, Alice .....	41, 72, 103	Lookadoo, Marilyn .....	45, 67, 101
Harper, Joyce .....	43, 55, 67, 100	Looney, Jean .....	103
Harrison, Anne .....	-11, 88	Lord, Louise .....	36, 53, 90
Hartnett, Catherine .....	88	Lovelady, Frances .....	89
Harton, Alice .....	35, 53, 57, 66, 80	Low, Cynthia .....	84
Hasty, Marian .....	92		
Haswell, Jate .....	106	McCabe, Aileen .....	103
Hay, Miss Vera .....	103	McCallam, Doris .....	37, 101
Hayman, Margaret .....	80	McCarley, Ann Elizabeth .....	43, 45, 57, 67, 73, 89
Haynes, Jane .....	80	McClanahan, Mary Lou .....	45, 97
Haynes, Martha Anne .....	53, 80	McCracken, Dorothy .....	33, 37, 102
Hedgcock, Peggy .....	86	McUllough, Sara Elizabeth .....	37, 57, 93
Henderson, Miss Cora .....	24	McDuffie, Lucile .....	37, 104
Henkel, Arthur .....	35, 88	McGehee, Kathleen .....	93
Henley, Mary Elizabeth .....	80	Maddin, Mary Belle Keith .....	107
Henning, Louise Hope .....	33, 94	Mahan, Ann .....	56, 84
Hepler, Margaret .....	106	Majior, Miss Nellie .....	24
Herold, Luecree .....	84	Mancy, Jean .....	37, 89
Hess, Teddy Ross .....	35, 106	Manning, Fattie .....	53
Hicks, Sarah Hunter .....	43, 84	Marks, Miss Rachel .....	122
Hill, Dorothy .....	82	Masengill, Mary Elizabeth .....	37, 57, 106, 107, 118, 122
Hill, Nancy .....	80	Mathews, Mary Lee .....	89
Hinn, Marian .....	106	Mathews, Jane .....	90
Hinck, Florence .....	44, 57, 84	May, Doris .....	82
Hoffman, Elizabeth .....	44, 90	Mayfield, Sarah Louise .....	45, 73, 98
Hofus, Ernestine .....	24	McEachan, Maryjo .....	41, 58, 101
Holcomb, Ruth .....	50	Meer, Mary Ann .....	94
Holley, Jane .....	52, 96	Mershimer, Nancy Jacquelyn .....	57, 99
Hollinger, Alma .....	82	Miller, Fannie Louise .....	91
Hollshied, Dr. W. H. .....	35, 98	Miller, Mary Jane .....	37, 82
Hood, Frances .....	82	Mitchell, Helen .....	45, 89
Hoover, Miriam .....	35, 86	Mitchell, Sarah .....	21, 54, 55
Horton, Ruth .....	44, 74, 92	Moore, Miss Gene .....	30, 37, 57, 105, 120
Howell, Betty .....	37, 96	Moore, Martha Jayne .....	107
Hudson, Florence Ann .....	87	Moose, Ross Lee .....	37, 81
Hunt, Bess .....	36, 88	Morrow, Jeanine .....	104
Humphries, Betsy Ann .....	45, 107	Morrison, Miss Catherine E. .....	94
Hyde, Lorraine .....	101	Mulvena, Marion .....	45, 107
		Murphey, Dorothy .....	101
Irwin, Alan .....	21	Murphree, Miss Bess .....	27
		Myhr, Miss Ivar Lou .....	25, 56
Jackson, Emmie Keith .....	47, 103		
Jackson, Jacqueline .....	44, 92	Nance, Miss Camilla .....	25, 98
Jacobs, Margaret .....	85	Nees, Mary .....	105
Jaffe, Kathleen .....	35, 53, 94, 120	Niles, Marjorie .....	56, 94
Jahncke, Louise .....	41, 86	Noland, Dorothy .....	105
Jahison, Dale .....	80	Norris, Diantha .....	105
Jencks, Ruth .....	47, 96	Norris, Miss Mary R. .....	25
Jennings, Nan .....	35, 88		
Jensen, Eloise .....	36, 54, 55, 90, 122	Olson, Marjorie .....	95
Johnson, Betty .....	87	Ordway, Miss Martha .....	25, 102
Johnson, Geraldine .....	84	Osment, Jessie .....	37, 56, 89
Johnson, Jean Irma .....	36, 88		
Johnson, Patricia .....	36, 98	Paine, Miss Alma .....	21
Johnson, Peggy .....	44, 96	Falmer, Rose .....	45, 101
Johnston, Frances .....	36, 98	Fardue, Josephine .....	38, 89
Jones, Elizabeth .....	44, 96	Parker, Frances Helen .....	25
Jopp, Phyllis .....	44, 96	Parkin, Sybil .....	82
Joseph, Irene .....	44, 96	Pascoe, Dorothy .....	107
Judd, Jane .....	44, 98	Faty, Helen .....	45, 89
		Payne, Marjorie .....	85
Kaufman, Dorothy Jeanne .....	44, 98	Pearson, Beverly .....	103
Kay, Frances .....	96	Feery, St. Clair .....	38, 50, 87
Kellogg, Mary Stuart .....	44, 90	Penick, Betty .....	25
Kelown, Peggy .....	82	Peterson, Marilyn .....	53, 87
Kent, Kathryn .....	36, 55, 90	Peterson, Maxine .....	98
King, Mildred .....	93	Phillips, Ann .....	98
Kirkin, Mary .....	36, 55, 90	Phillips, La Vonne .....	91
Knepp, Mary Elizabeth .....	93		
Knox, Clara .....	94		
Scotlans, Jane .....	98		
Krider, Mary .....	80		
Kuehne, Jean .....	80		

# ALPHABETICAL INDEX



	<i>Page</i>		<i>Page</i>
Phillips, Madge	38, 105	Stone, Nancy	54, 89
Plummer, Margaret	38, 57, 91	Stovall, Alice	34, 39, 85
Potter, Jean	38, 103	Sutherland, Mrs. Nancy	27
Potter, Patricia	85	Sutton, Dorothy	83
Powell, Dorothy	41, 55, 105		
Powell, Minnie	39	Taichert, Marian	81
Pride, Sarah	81	Tate, Virginia	103
Pritchett, Zara Frierson	47	Tarbet, Annette	50, 83
Proctor, Patricia	46	Taylor, Miss Marie	19
Provine, Dr. Robert C.	20	Teetsborn, Mary	91
Pugh, Miss Anna	25	Thomas, Ardelle	87
		Thomas, Betty Jean	95
Charles, Betty	38	Thomas, Margie Lou	50, 99
Queen, Elaine	81	Thomas Sarah	39, 50, 53, 95
		Thomson, Virginia	40, 72, 105, 122
Ragland, Frances	85	Thompson, Alice	51, 85
Ramsey, Barbara	82	Throne, Miss Amelie	27
Ransom, Helen	56	Tisdale, Jane	85
Reagan, Marguerite	46, 97	Todd, Mae	91
Reeves, Juanita	89	Tolliver, Deliaann	103
Reid, Lorraine	95	Turnipseed, Miss Janice	27
Reinke, Caroline	85		
Rhea, Miss Linda	25, 36	Uhl, Betty Lou	52, 99
Rice, Carlene	38, 53, 54, 107		
Richards, Martha	46, 93	Van Hooser, Miss Ruby	27
Richardson, Helen	46, 87	Vaughn, Ann	85
Richardson, Lucile	87	Versen, Betty	85
Richey, Miss Virginia	25, 82	Vincent, Elaine	40, 89
Riggs, Mr. Lawrence H.	25	Vohl, Janet	40, 83
Ringling, Mable Ellen	97	Voigt, Jane	40, 99
Ritson, Mary Eleanor	91	Voorhies, Phyllis	40, 99
Roark, Lee Virginia	55, 87		
Robinson, Mary Louise	83	Waggener, Nancy	40, 85
Rochell, Juanita	97	Wagner, Betty Lou	105
Rockett, Nell	95	Waldrep, Jean Marie	95
Rofe, Ann Sherborne	38, 50, 66, 101, 121	Walker, Carolyn	103
Rofe, Jeanne	38, 89	Walker, Mary Elizabeth	46, 103
Rose, Hazel Coate	26	Walker, Patty	91
Rose, Mr. Kenneth	26	Walsh, Mildred Anne	93
Ruel, Miss Bertha M.	26, 94	Walton, Marguerite	107
Russell, Mary Ellen	91	Ward, Helen	81
Russell, Phyllis	91	Warden, Betty	47, 52, 73, 83
		Watson, Becky Lu	47, 97
Sangree, Margaret	46, 56, 93	Warren, Patricia	85
Salisbury, Jan	39, 66, 91	Washington, Elizabeth	44, 46, 85
Sargent, Leha	103	Weathers, Jayne	99
Sarver, Amanda	95	Weimer, Janet	95
Satterfield, Katheryn	97	Weingarten, Bernice	46, 95
Saunders, Miss Louise	26, 92	Wemys, Peggy	46, 85
Savage, Laura Marr	85	West, Mary Ready	56, 93
Sawyer, Mary Elizabeth	89	Wheaton, Mary Ellen	99
Saxon, Dorothy	85	Wheeler, Dorothy Jean	85
Schmidt, Kack	83	Wheeler, Frances	40, 81
Schwartz, Ethel Mary	50, 53, 54, 101	Wheeler, Martha	81
Scott, Mary Jo	87	White, Grace	93
Scovern, Bess	105, 122	White, Miss Olive	27, 90
Scovern, Jane	105, 122	Whittemore, Azile	103
Scruggs, Miss Theodora C.	26	Whittlesey, Ruth	41, 97
Seabolt, Ann	93	Widell, Miss Evelyn	27, 88
Seese, Betty Ann	95	Williams, Mary Taylor	89
Sehmann, Miss Betty Jane	26, 41, 100	Wilson, Betty	99
Sefton, Jane	81	Wilson, Margery	50, 57, 69, 99
Shackelford, Miss Mary Wynne	26	Wilson, Mary Thayer	46, 97
Shaw, Penelope	39, 98	Wing, Audrey	87
Shears, Ernestine	101	Winnia, Miss Catherine	27
Sherman, Joanna	91	Winnia, Diane	40, 56, 85
Shofner, Mary Florence	85	Wood, Marion	97
Silverman, Aileen	46, 81	Woodcock, Elizabeth	46, 85
Simmons, Jane	83	Woodward, Jane	51, 74, 85
Smith, Geraldine	107	Wright, Avonne	85
Smith, Jean	105	Wright, Lois	81
Smith, Martha Elizabeth	39, 99	Wright, Mary Walton	103
Smith, Mary	83	Wright, Peggy	40, 84, 85
Smith, Miss Mary Belle	26	Wright, Rae	101
Smith, Ruby	99		
Smotherman, Doris Ann	89	Young Dorothy Ann	89
Souby, Miss Susan S.	26	Young, Edith Ann	26
Spangler, Ellen	39, 81	Young, Nancy	40, 53, 81, 121
Sparks, Josephine	39, 53, 54, 66, 101		
Steenburg, Susan Jane	39, 83		
Stegmeir, Dorothy	39, 103		
Steinhart, Miss Awarie	39, 83		
Stephany, Dorothy	39, 53, 95		

# HALL AND BENEDICT

T. GRAHAM HALL

A E T N A  
INSURANCE  
SERVICE

NASHVILLE  
TRUST  
BUILDING



PARCEL POST ORDERS

*Given Prompt Attention*

HERMITAGE LAUNDRY

*- and -*

SWISS CLEANERS



*Nashville's Largest and Best  
Dry Cleaning Establishment*



NASHVILLE, TENNESSEE

109 Fifth Avenue, South

Phone 6-1173

# BAIRD - WARD PRINTING COMPANY

*Specializing in*

PUBLICATIONS  
CATALOGS  
BOOKLETS

917 Commerce Street

NASHVILLE, TENNESSEE



A PRINTING HOUSE

- of -

PROVEN SERVICE

HOTEL  
HERMITAGE

*Appreciates and Thanks*  
*Ward-Belmont*

*Compliments of*

*Coca-Cola* BOTTLING WORKS

NASHVILLE, TENNESSEE

CHINA—GLASS—SILVER

*Commercial Equipment*  
*Cooking Utensils*

McKay-Cameron Company

212 Third Avenue, North

6-0427





*Tru-li-Pure*  
PASTEURIZED

MILK AND DAIRY PRODUCTS

*Nashville's Finest*

From tested herds . . . pasteurized . . . and produced under the Sealtest System of Laboratory Protection—cleanliness, wholesomeness, and purity, safeguarded by the most modern scientific equipment and methods.

NASHVILLE PURE MILK CO.

YELLOW CAB COMPANY

*Incorporated*

Yellow Cabs, Sight-Seeing Sedans, Brown Baggage Trucks

*Official Company for All Railroads and Leading Hotels*

Baggage Agents for Ward-Belmont

Special Attention Given Students

Baggage Checked Through to Destination Without Extra Charge



REDUCED CAB RATES

*No Charge for Extra Passengers*



PHONE 6-0101

*Cheapest Rates*

Nashville's  
Smart Young  
Women

*Have Learned  
That Dentons Is*

FASHION RIGHT

*Let Us Help YOU Select Your  
Summer and Vacation  
Wardrobe*

**Dentons**

518 Church

R. T. OVERTON  
& SON

•  
*Fruits and  
Vegetables*  
•

515 Third Avenue, North  
Phone 6-8143

*Compliments of*

RAGLAND,  
POTTER &  
COMPANY

*Distributors of*

Libby Food Products

*Again, our Junior De-  
partments wish you every  
success through life*

*The Dress Shop*

- *Accessories*
- *Beauty Salon*
- *Millinery Dept.*
- *Sports Shop*
- *Junior Shoe Dept.*

**ARMSTRONG'S**  
*fashion center*  
NASHVILLE, TENN.

*Grace's*  
Shop for Ladies

*Our constant effort to give the best possible service and the lowest possible price  
has built a steadily increasing patronage and has enabled us to  
continually add to our facilities and to enlarge  
the scope of our service.*

**BOND, CHADWELL COMPANY**

*Moving—Storage—Coal—Coke*

1625 Broad  
12 Arcade

Tel. 5-4151  
Tel. 5-4154

124 1st Ave., N.  
715 8th Ave., N.

Tel. 5-2738  
Tel. 5-1431

*Compliments of*

**BENSON PRINTING  
COMPANY**





TO THE  
MILESTONES *Staff*

1941

We are proud to have had the  
privilege of furnishing the en-  
gravings in the 1941 Milestones  
and want to congratulate you  
on your achievement of produc-  
ing another outstanding yearbook  
· for ·

WARD - BELMONT

SOUTHERN ENGRAVERS, INC.

NASHVILLE

TENNESSEE

*An Organization Skilled in the Art of Photo-Engraving*

COMMERCIAL  
PHOTOGRAPH  
COMPANY

*Makers of*

QUALITY  
PHOTOGRAPHS

*For Advertising and Personal Uses*

423½ Church Street

Phone 6-0430

*(Official Photographers)*

NASHVILLE, TENNESSEE

FISHOLOGY

Fish is health food,  
Pure and simple—  
Feeds the mind,  
Brings out your dimple;

Should you angle after  
School is out—  
There's good fish yet  
As e'er caught out.

Some of these are  
Seashore fresh,  
So fish for them  
With larger mesh.

ANDERSON FISH AND  
OYSTER COMPANY

412 Broad Street

2914 West End

THE BEST SEA FOODS

ALLOWAY  
BROTHERS CO.

•

*Distributors of*

MILK FED POULTRY  
TABLE TEST EGGS  
HIGH-GRADE MEATS

•

150 Second Avenue, South  
NASHVILLE, TENNESSEE

*If You Want*

*First-Class . . .*

*Meat*

YOU CAN REST ASSURED  
THAT WE HAVE IT

•

*Alex Warner & Son*

Stall 33—New City Market

*Phone Us When You Want It Again*





