

This is a provisional PDF only. Copyedited and fully formatted version will be made available soon.



ISSN: 0015-5659

e-ISSN: 1644-3284

Partial pancreatic resection along the embryological fusion plane – no longer a fantasy

Authors: Monika Łącka, Dariusz Łaski, Stanisław Hać, Michał Szymański

DOI: 10.5603/FM.a2019.0121

Article type: CASE REPORTS

Submitted: 2019-09-09

Accepted: 2019-10-05

Published online: 2019-11-15

This article has been peer reviewed and published immediately upon acceptance. It is an open access article, which means that it can be downloaded, printed, and distributed freely, provided the work is properly cited.

Articles in "Folia Morphologica" are listed in PubMed.

Partial pancreatic resection along the embryological fusion plane — no longer a fantasy

Partial pancreatic resection along the embryological fusion plane

Monika Łącka, Dariusz Łaski, Stanisław Hać, Michał Szymański

Department of General, Endocrine and Transplant Surgery, Medical University of Gdańsk, Poland

Address for correspondence: Dariusz Łaski, PhD, Department of General, Endocrine and Transplant Surgery, Medical University of Gdansk, ul. M. Smoluchowskiego 17, 80–214 Gdańsk, Poland, tel: 48 583493010, fax 48 583493020, e-mail: dlaski@gumed.edu.pl

Abstract

Background: The embryological connection between the dorsal and ventral pancreatic regions divides the pancreas into two segments. This anatomical dependence allows segmental pancreatic resection through the embryological fusion plane (EFP). The advantages of limited pancreatic resection are the preservation of the natural continuity and function of the gastrointestinal tract and the avoidance of the metabolic and endocrine consequences of total resection of the pancreas and the duodenum.

Materials and methods: Two patients are described who underwent anatomical segmentectomy of the pancreatic head along the EFP for the treatment of pancreatic cystic tumor and main duct IPMN. The authors suggested diagnostic and intraoperative management leading to qualification for pancreatic resection along the EFP.

Results: Pancreas and duodenum sparing surgery is an opportunity for patients in terms of the post-operative quality of life. Indications for this kind of surgery are limited and case selection is very difficult. The procedure for embryological bud resection is highly complicated includes a high rate of possible complications. On the other hand high volume centers may offer this procedure at an acceptable rate of complications in selected cases.

Conclusions: Accurate diagnosis with a vascular anatomy and biliary and pancreatic duct configuration give grounds to analyze pancreas-sparing surgery. The operation plan requires careful 3D planning and an experienced team. Bipolar electrocautery, micro surgical tools and intraoperative cholangiography and pancreatography are helpful.

Key words: IPMN, pancreas segmentectomy, pancreatic sparing resection

Introduction

The pancreas is made up of three compounds - one dorsal and two ventral; right and left. The left compound disappears during embryogenesis. The right one approaches the dorsal and grows with it and creates the embryological fusion plane (EFP) [1,2,3,4,5,6].

The main mass of the pancreas - the upper part of the head, the entire trunk and tail, are formed from the dorsal bud. The lower part of the head is formed from the ventral compound [1,6].

The embryological connection between the dorsal and ventral pancreatic regions divides the pancreas into two segments, making a segmental pancreatic resection through the EFP feasible [1,7] (fig.1)

This anatomical dependence allows pancreas and duodenum sparing treatments in cases of benign and low-grade neoplasms of the pancreas [8,9,10]. The advantages of limited pancreatic resection are not only the preservation of the natural continuity and function of the gastrointestinal tract, but also the avoidance of the metabolic and endocrine consequences of total resection of the pancreas and duodenum [11,10,12].

Materials and methods

Two patients are described who underwent anatomical segmentectomy of the pancreatic head along the EFP for the treatment of pancreatic cystic tumor and main duct intraductal papillary-mucinous neoplasm (IPMN). The authors suggested diagnostic and intraoperative management leading to qualification for pancreatic resection along the EFP.

Case presentations

Case 1

A 64-year-old woman was admitted to the Department of General, Endocrine and Transplant Surgery with a long history of abdominal mass. In the CT scan, the extrahepatic biliary ducts were distended up to 21 mm, intrahepatic ducts were marked up to 3-4 mm, and polycyclic mass (60x66x93mm) filled with dense fluid was observed in the pancreatic head. The lesion was modeling the pre-pyloric part of the stomach and the duodenum loop, without the obvious features of infiltration of their walls. The upper mesenteric arteries and celiac trunk had no radiological traces of invasion. The Wirsung duct in the tail of the pancreas was distended up to 17mm. (fig.2)

No radiological signs of malignancy were present. Radiological diagnosis was mucinous cystic neoplasm (MCN) of the pancreas without malignant transformation with outflow obstruction from the ventral pancreatic duct. The ventral duct was not affected by the lesion and was of normal size.

The patient did not present any other symptoms; the history of pancreatitis was negative. The patient was qualified for surgical treatment.

Surgery

During the procedure, a polycystic tumor in the head of the pancreas was confirmed. The common bile duct was distended to 3 cm, and the gallbladder was distended to 20 cm. A part of the head of the pancreas originating from the dorsal compound was resected through the EFP. An intraoperative histopathological examination of the cut line did not reveal malignant traits. An intraoperative pancreatography through the duct on the cut line of the pancreatic stump was performed. No leakage was found from the pancreatic ducts, and no anomalous pancreatic ducts were found. After the cholecystectomy the T-tube was left in the common bile duct. Cholangiography confirmed the normal outflow to the duodenum and complete decompression of the common bile duct after cystic tumor resection. Fig.3 Fig.4 The cut line of the pancreas was connected to the small bowel on the Roux loop.

The postoperative period was uneventful. The final postoperative pathology revealed adenoma serosum oligocellulare. Fourteen days after surgery, an outpatient cholangiography was performed and the T-tube drain was removed without signs of bile stasis. During the follow up the patient did not present symptoms of pancreatic exocrine insufficiency.

Case 2

A 57-year-old woman was admitted to the Department of General, Endocrine and Transplant Surgery due to symptomatic cholelithiasis. An abdominal CT was performed, and signs of pancreatic IPMN were found. The pancreas from the isthmus to the distal part of tail was atrophic, with visible massive distension of the Wirsung duct (22mm) with secondary pancreatic duct dilatation. No unambiguous mass was found. The features of pancreatitis and fluid correlation in adherence were not shown. The image was interpreted first as an intraductal, papillary mucinous (pancreatic) neoplasm (IPMN), type 1, without involvement of the ventral bud duct. During admission the patient did not present any other symptoms. The patient was qualified for surgical treatment. The patient was an active woman with perfect

physiological status and good biological state. After discussing all potential methods of treatment she requested pancreas sparing surgery, if possible, to increase her future life quality after pancreatic resection.

The cytology from the ERCP suggested a cystic mucosal lesion of low to medium dysplasia, an IPMN.

Surgery

During the operation an elastic mass was found covering the stem of the pancreas over an 8 cm length. On the anterior surface of the gland was found a clearly visible plane of fusion between prior embryological buds. Macroscopically, the cystic tumor did not reach this point. The Airid maneuver was performed and the splenic vessels were ligated. The pancreas was dissected and cut along the fusion plane. A normal size pancreatic duct was found. The pancreas and spleen were sent for intraoperative histopathological examination. A pancreatography was performed through the stump of the duct of the pancreatic remnant on the cut line, and showed a free flow to the duodenum without any pathology. Fig.5 An intraoperative frozen section histopathological examination of the cut line revealed the presence of IPMN in the pancreatic duct. In this situation, instead of a partial pancreatic resection along the embryological fusion, a standard pylorus-preserving pancreaticoduodenectomy, also known as the Traverso-Longmire procedure, was performed.

The final histopathological examination revealed a colloid carcinoma in the body of the pancreas, pT3N0M0 (Classification of Malignant Tumors 8th Edition) with infiltration of fatty tissue. The patient underwent a second surgery 4 weeks later and a radicalization was performed - resection of the retroperitoneal tissue. A histopathological examination showed no evidence of cancer infiltration nor positive lymph nodes.

Discussion

Pancreatic resection by a laparoscopic or open method is one of the most sophisticated procedures in abdominal surgery. It accompanies relatively large numbers of complications. The resection of the duodenum during pancreatic surgery determines the functional and endocrine status of the upper digestive tract. Duodenum sparing and pancreas sparing surgery are of major importance for patients concerning the post-operative quality of life [10, 12].

The embryonic development of the human pancreas comprises two embryo buds, and occurs about week 7 of pregnancy. The plane along the junction of the two parts is called the embryological fusion plane (EFP) [1, 6]. The EFP is an anatomical feature that is important in

planning pancreatic surgery. The differences between two embryo buds is described in pathology reports, and encourages surgeons to make the decision to operate along the EFP [1,6]. The concept of EFP surgery is based on that of the embryo buds in the pancreas divisum. Anatomical cadaveric studies document that the EFP contains only the small pancreatic ducts and small vessels [1]. The concept was adapted to the normal pancreas after full fusion. Pancreatic bud sparing surgery can be performed with the dorsal and ventral bud. Several although not numerous papers confirm the feasibility of pancreatic partial resection along the EFP [1,13,10,6,12].

Surgical resection of pancreatic premalignant or for low-grade neoplasms might be also considered as gland sparing surgery [12,14]. Described elsewhere, the indications for pancreatic bud resection are intraductal papillary mucinous neoplasms (IPMNs), neuroendocrine tumors (NETs), and pseudo-papillary tumors (SPTs) [10,12,14]. The pancreas is an organ without any defined parts or segments. The partial resection of the pancreas is based on enucleation of the tumors or segmental resections after gland transection. A pathology limited to pancreatic duct or pancreatic head cystic or neuroendocrine tumors might require a different kind of pancreas sparing surgery. Dorsal bud resection is attractive in upper aspect pancreatic head benign lesions, especially IPMN [15]. The clinical outcome or radicality of pancreatic sparing surgery is the same as large resections in patient series [15]. Indications for this kind of surgery are limited, and qualified to a more sophisticated option than the rule [13,10,14]. Although an experienced team was used and a high resolution CT was performed in case 2, a locally advanced cancer remained unrecognized. This demonstrates how difficult case selection can be.

The procedure for embryological bud resection is much more complicated, and related to a high rate of possible complications. On the other hand, high volume centers may offer this procedure at an acceptable rate of complications in selected cases.

Conclusions

In conclusion, an accurate diagnosis with a vascular anatomy and biliary and pancreatic duct configuration gave grounds to analyze the pancreas sparing surgery. The operation plan requires careful 3D planning and an experienced team. Bipolar electrocautery, micro surgical tools and intraoperative cholangiography and pancreatography are all helpful. The authors began the practical aspect of EFP preparation based on a cadaveric exercise before clinical implementation. During a dorsal primodium pancreatic resection it is possible

to preserve the duodenum and distal bile duct. All arcades of the pancreatic head should be preserved to avoid ischemia complications.

References

1. Sakamoto Y, Nagai M, Tanaka N, et al. Anatomical segmentectomy of the head of the pancreas along the embryological fusion plane: a feasible procedure? *Surgery* 2000;128:822–31.
2. Scatton O, Sauvanet A, Cazals-Hatem D, et al. Dorsal pancreatectomy: an embryology-based resection. *J Gastrointest Surg* 2006;10:434–8.
3. Ohwada S, Ogawa T, Kasahara M, et al. Ventral pancreas-preserving pancreatic head and body resection. *Hepatogastroenterology* 2001;48:1622–4.
4. Uchida T, Takada T, Ammori BJ, et al. Three-dimensional reconstruction of the ventral and dorsal pancreas: a new insight into anatomy and embryonic development. *J Hepatobiliary Pancreat Surg* 1999;6:176–80.
5. Skandalakis LJ, Rowe JS Jr, Gray SW, et al. Surgical embryology and anatomy of the pancreas. *Surg Clin North Am*, 1993;73:661-697.
6. Kimura W. Surgical anatomy of the pancreas for limited resection. *J Hepatobiliary Pancreat Surg* 2000;7: 473-479.
7. Talbot ML, Foulis AK, Imrie CW. Total dorsal pancreatectomy for intraductal papillary mucinous neoplasm in a patient with pancreas divisum. *Pancreatology* 2005;5:285–8.
8. Ryu M, Takayama W, Watanabe K, et al. Ventral pancreatic resection for adenoma and low-grade malignancies of the head of the pancreas. *Surg Today* 1996;26:476–81.
9. Iacono C, Ruzzenente A, Conci S, et al. Head dorsal pancreatectomy: an alternative to the pancreaticoduodenectomy for not enucleable benign or low-grade malignant lesions. *Pancreatology* 2014;14:419–24.
10. Wang X, Tan CL, Song HY, Yao Q, Liu XB. Duodenum and ventral pancreas preserving subtotal pancreatectomy for low-grade malignant neoplasms of the pancreas: an alternative procedure to total pancreatectomy for low-grade pancreatic neoplasms. *Retrospective Study World J Gastroenterol* 2017;35:6457-6466.
11. Thayer SP, Fernández-del Castillo C, Balcom JH, et al. Complete dorsal pancreatectomy with preservation of the ventral pancreas: a new surgical technique. *Surgery* 2002;131:577–80.
12. Nakagohri T, Kinoshita T, Konishi M, Takahashi S, Gotohda N, Kobayashi S, Kojima M, Miyauchi H, Asano T. Inferior head resection of the pancreas for intraductal papillary mucinous neoplasms. *J Hepatobiliary Pancreat Sci* (2010) 17:798–802.
13. Chunfu Z, Zhongzhi J., Xudong Z, et al. Anatomical segmentectomy of the pancreatic head along the embryological fusion plane: a case series and a literature review. *Medicine* 2018;18:e0623.
14. Nishi T, Kawabata Y, Ishikawa N, Araki A, Yano S, Maruyama R, Tajima Y. Intraductal papillary mucinous carcinoma of the pancreas associated with pancreas divisum: a case report and review of the literature. *BMC Gastroenterology* (2015) 15:78.
15. Yu-Wen Tien, MD, PhD,1 Rey-Heng Hu, MD, PhD,1 Ji-Shiang Hung, MD,1 Hsiu-Po Wang, MD,2 and Po-Huang Lee, MD, PhD1. Noninvasive Pancreatic Cystic Neoplasms can be Safely and Effectively Treated by Limited Pancreatectomy. *Annals of Surgical Oncology* 15(1):193–198.

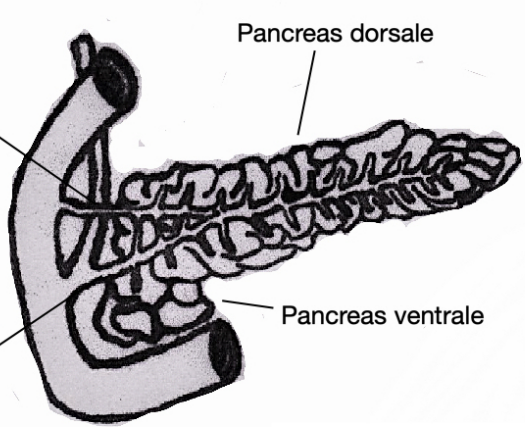
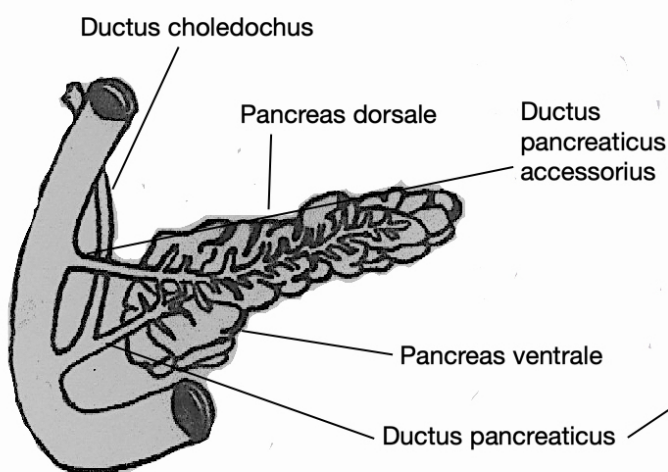
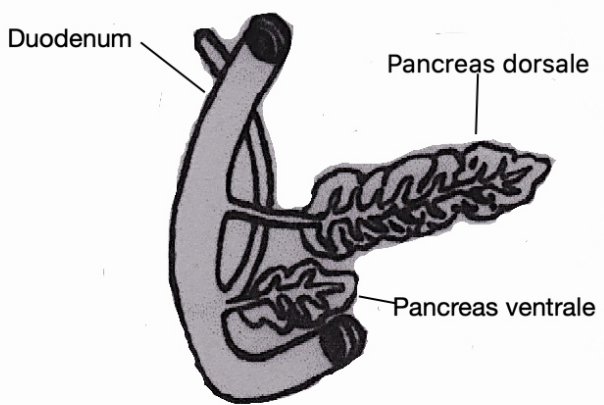
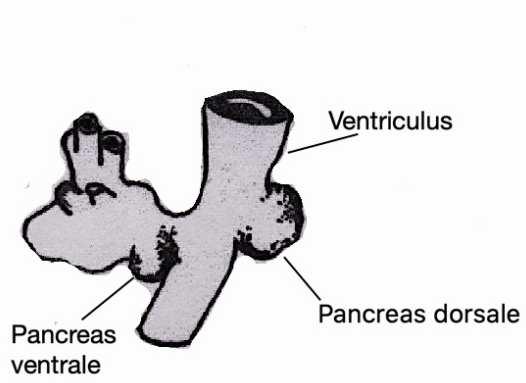
Figure 1. The embryological connection between the dorsal and ventral pancreatic regions divides the pancreas into two segments

Figure 2. 64 year old patient CT scan, polycyclic mass (60x66x93mm) filled in the pancreatic head

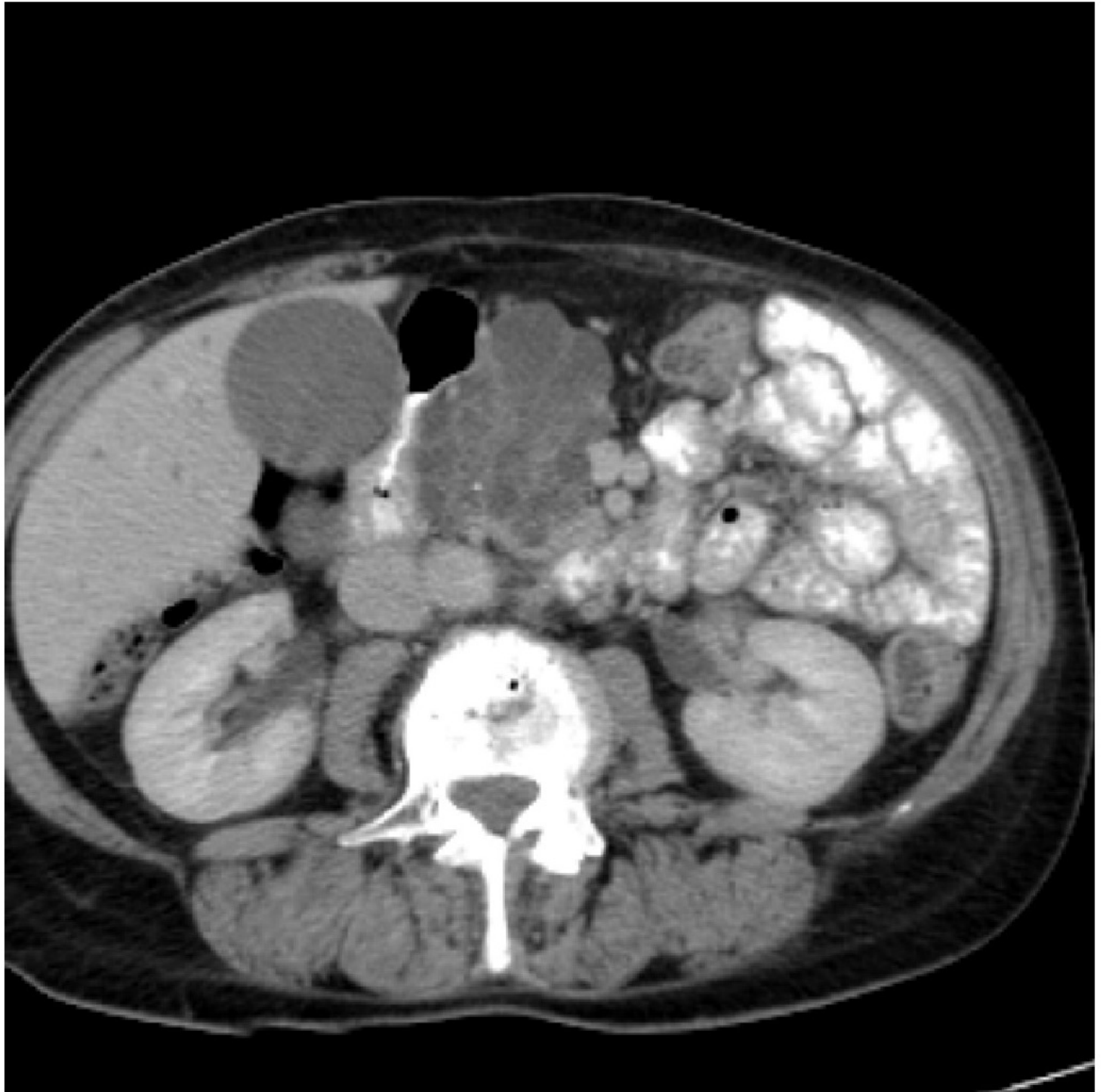
Figure 3. Cholangiography during surgery, confirmed the normal outflow to the duodenum and complete decompression of the common bile duct after cystic tumor resection

Figure 4. Cholangiography during surgery, confirmed the normal outflow to the duodenum and complete decompression of the common bile duct after cystic tumor resection

Figure 5. Pancreatography during surgery, showed a free flow to the duodenum without any pathology



Based on Anatomia
Człowieka, Adam
Bochenek, Michał Reicher



R

9/4

