

The association of increased stomach wall radiotracer uptake with prolonged use of Omeprazole capsules on myocardial perfusion imaging (MPI) using ^{99m}Tc -sestamibi SPECT

Hamid Javadi¹, Sara Jallalat¹, Shahriar Semnani¹, Mehdi Mogharrabi¹, Iraj Nabipour², Seyed Masoud Tabib³, Moloud Abbaszadeh³, Majid Assadi⁴

¹Golestan Research Center of Gastroenterology and Hepatology (GRCGH), Golestan University of Medical Sciences (GUOMS), Gorgan, Iran

²The Persian Gulf Tropical and Infectious Diseases Research Centre, Bushehr University of Medical Sciences, Bushehr, Iran

³Department of Gastroenterology, School of Medicine, Bushehr University of Medical Sciences, Bushehr, Iran

⁴The Persian Gulf Nuclear Medicine Research Center, Bushehr University of Medical Sciences, Bushehr, Iran

[Received 2 III 2013; Accepted 10 VI 2013]

Abstract

Myocardial perfusion imaging (MPI) is widely used in routine practice for diagnosis and risk stratification of coronary artery disease (CAD). Intense curvilinear activity in the stomach wall of a patient was seen on MPI raw data. This phenomenon was completely dissimilar to the familiar intraluminal gastric reflux of sestamibi. This observed activity could have resulted in false-positive or false-negative artifacts — and inaccurate diagnosis — of the inferior wall of the left ventricle after MPI processing. On further exploration, the current researchers found

that the patient had a history of 10-year Omeprazole capsule consumption. The authors present this infrequent case of intense stomach uptake to stress the related clinical and diagnostic implications with the aim to stimulate acute awareness of possible, unexpected infringements on image quality that could potentially interfere with accurate interpretation of the data.

KEY words: ^{99m}Tc -sestamibi cardiac SPECT, myocardial perfusion imaging, gastric wall, proton pump inhibitors

Nuclear Med Rev 2013; 16, 2: 91–94

Introduction

Myocardial perfusion imaging (MPI) with exercise or pharmacological stress, either with thallium-201 (^{201}Tl) or technetium- ^{99m}Tc -sestamibi, is widely used for preparation of diagnostic and prognostic information regarding patients with proved or possible coronary artery disease (CAD) and it facilitates the accurate management of CAD patients [1]. However, with present myocardial radiotracers, such as ^{99m}Tc -sestamibi, rather high extra-cardiac activity is usually seen, which is mostly associated with physiologic hepatobiliary or renal excretion [2]. In contrast, there are limited reports suggesting possible non-physiologic reasons for these visceral uptakes, and occasionally, indicating different underlying pathologies [2]. Indeed, accidental pathological findings during myocardial perfusion imaging are not scarce and cautious examination of the full field of image acquisition has been useful in identifying these accidental findings [3–5]. Alternatively, most efforts concentrate on dissolving these interfering abdominal activities without attention to the clinical importance of such findings [6, 7].

On the MPI raw data of one such patient, intense curvilinear activity in the stomach wall was evident. This phenomenon was completely dissimilar to the familiar intraluminal gastric

Correspondence to: Majid Assadi, MD, Associate Professor of Nuclear Medicine
The Persian Gulf Nuclear Medicine Research Center, Bushehr University of Medical Sciences
Boostan 19 Alley, Sangi Street Bushehr 7533934698, Iran
Tel.: 0098–771–2580169
Fax: 0098–771–2541828
E-mail: assadipoya@yahoo.com, asadi@bpums.ac.ir

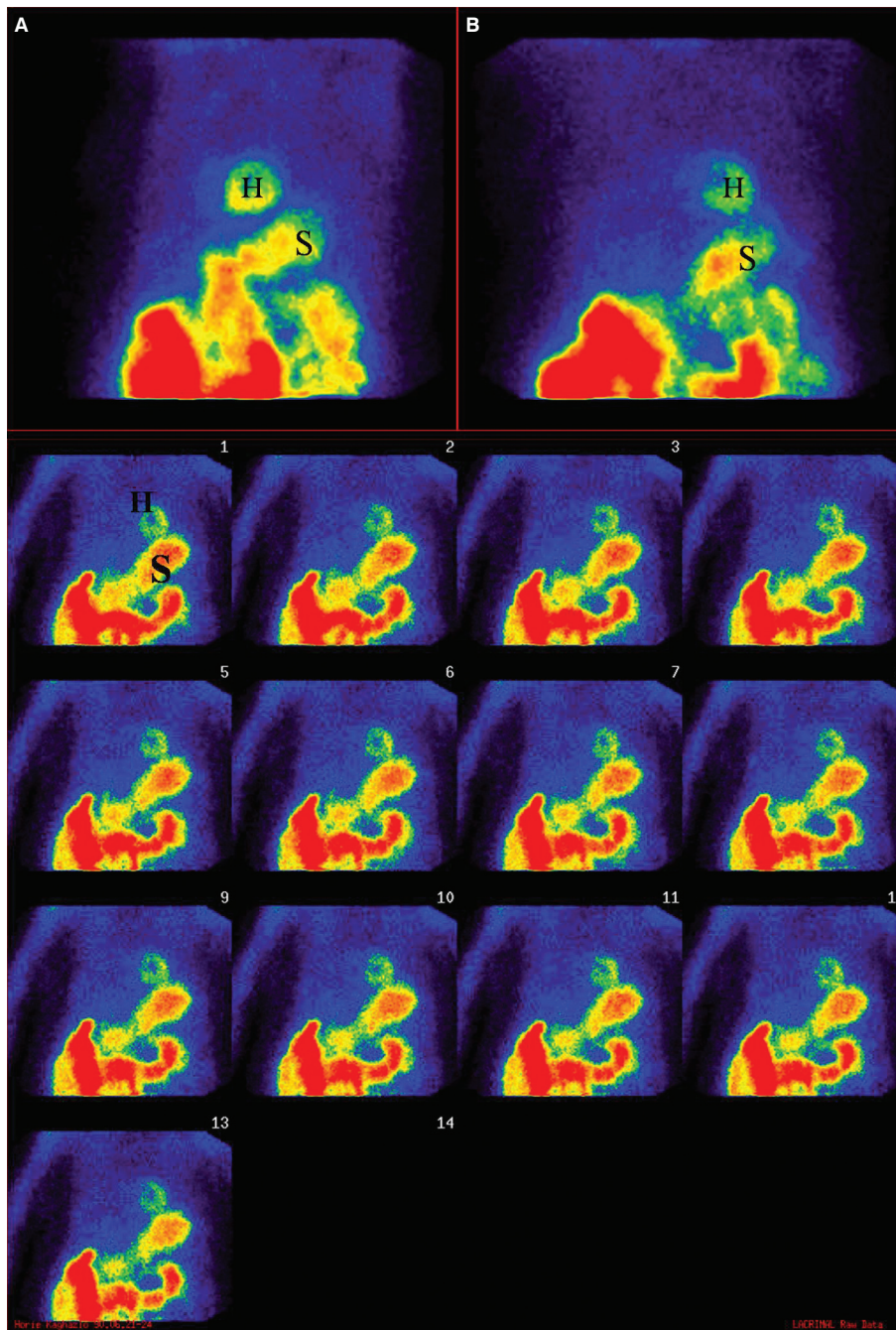


Figure 1. There is curvilinear activity with more intensity in the stomach wall than in the heart on both stress (A) and rest (B) raw data of myocardial perfusion imaging (MPI) using ^{99m}Tc -sestamibi SPECT. H, heart; S, stomach

reflux of sestamibi. This observed activity could have resulted in false-positive or false-negative artifacts — and inaccurate diagnosis — of the inferior wall of the left ventricle after MPI processing. On further exploration, the current researchers found that the patient had a history of 10-year Omeprazole capsule consumption. The authors present this infrequent case of intense stomach uptake to stress the related clinical and diagnostic implications with the aim to stimulate acute awareness of possible, unexpected infringements on image quality that could potentially interfere with accurate interpretation of the data.

Case report

A 54-year-old woman with an atypical chest pain was referred to the nuclear medicine department for assessment of possible coronary artery disease. The patient filled out a questionnaire that included demographics and risk factors for CAD. She had not had previous coronary artery bypass surgery (CABG) or percutaneous coronary intervention (PCI). The patient underwent a 2-day dipyridamole technetium ^{99m}Tc -sestamibi SPECT protocol. All cardiovascular medications were stopped for at least 2 days and the

patient fasted overnight prior the test. Dipyridamole (0.56 mg/kg) as a pharmacologic agent was infused over 4 min. Patient symptoms and a 12-lead ECG were monitored continuously. A dose of 740 MBq of Tc-99m sestamibi as a compact bolus was injected 4 min after the beginning of the infusion. After twenty minutes, the patient was requested to drink two glasses of fatty milk to hasten hepatobiliary clearance of the Tc-99m sestamibi, and acquisition was performed 90 minutes after the initial infusion of dipyridamole. The following day was the rest phase of the test.

During the processing of the raw data, the authors observed intense curvilinear activity in the stomach wall, which was identical in shape and intensity to stress and rest sets (Figure 1A, B). The intensity of the gastric wall activity was considerably higher than the patient's heart activity. The authors asked about her past medical history regarding gastrointestinal problems, including hiatus hernia, peptic ulcer disease, indigestion, heart burn, an acid reflux problem, previous procedures (gastric surgery), and other medical records. The patient explained that she experienced epigastric discomfort and nausea about ten years ago; a gastroenterologist prescribed her Omeprazole capsules (20 mg) daily. Her symptoms subsided after taking this capsule; so, she had been taking it since that date by self-prescription.

Discussion

Myocardial perfusion imaging with 99mTc-labeled agents is used widely for the diagnosis and risk stratification of CAD [1]. In spite of all the benefits of 99mTc-MIBI myocardial perfusion imaging, the radiopharmaceutical has some extra-cardiac uptake, frequently in the stomach, liver, bowel, and spleen [8], which can interfere with accurate interpretation of the MPI [9]. Several techniques have been tried, with mixed results, to reduce the effect of extra-cardiac activity on the interpretation of the images, including delaying the imaging, ingesting water, milk, or food, altering the patient's position, or using various prokinetic medications [9–11].

This case showed that stomach wall uptake was strongly associated with prolonged use of PPIs. The intense stomach wall 99mTc-sestamibi activity was not washed out by the ingestion of milk and was the same on both stress and rest sets.

In the literature, a number of studies have demonstrated the association of this activity with dyspepsia [12–14], but to the authors' knowledge, only one investigation reported its association with consumption of PPIs [15]. In a Khary et al study on 39 patients who underwent dipyridamole 201 Tl stress tests, a stepwise logistic regression analysis revealed that only two variables had predictive value in 201 Tl gastric uptake: the presence of active gastritis symptoms and the use of anti-gastritis medications [12].

In another study by Côté et al, on a group of 819 patients who underwent 99m Tc-sestamibi cardiac, single photon emission, computed tomography (SPECT), 13 patients (1.6%) depicted significant gastric-wall hyperactivity. They concluded that this finding was associated with dyspepsia [13].

In a similar study by Gholamrezanezhad et al. on 1056 patients, 1.9% of participants were identified with gastric wall hyperactivity [14]. In addition, this study classified gastric wall activity qualitatively as G1, or hyperactive gastric wall (equivalent to the patient's heart activity), or G2 (less than heart activity), and showed

that dyspeptic symptoms were present in 80% and 18.6% of G1 and G2 patients, respectively ($p < 0.001$) [14].

Furthermore, Goel et al. compared the effect of proton pump inhibitors and H2 antagonists on the stomach wall activity in 121 patients who underwent 99m Tc-sestamibi cardiac SPECT [15]. In total, 26 and 14 patients were taking PPIs and H2 antagonists, respectively. Taking of proton pump inhibitors was defined by more than 2 weeks duration. No patients were taking both medications. Stomach wall activity was strongly related to prolonged use of PPIs ($X^2 = 51.9, P < 0.0001$) [15]. They concluded that prolonged PPI therapy, but not H2 antagonist therapy, resulted in significant stomach wall activity [15].

The mechanism of impact of the PPIs on stomach-wall sestamibi uptake is not obvious. 99mTc-sestamibi is a lipophilic cationic agent that is taken up by myocardial tissue in proportion to myocardial blood flow and concentrated in mitochondria [1]. However, as a preliminary cause, it may concentrate through gastric parietal cells due to their abundant mitochondria; therefore, inhibition of the H1/K1 ATPase pump diminishes the secretion of sestamibi from the gastric wall into the gastric lumen in the same way that the decline of acid secretion would [15].

This case and previous reports may indicate that stomach wall activity, due to its proximity to the inferior myocardial wall, could cause either false-negative or false-positive myocardial perfusion SPECT findings resulting from either Compton scatter or ramp filter artifacts. This suggests a need for more attention during the interpretation of MPI of patients, particularly those who are taking PPIs [15]. This paper recommends designing a clinical trial that compares gastric wall activity in patients who stop, and in patients who continue, the PPIs before scheduling myocardial perfusion scanning.

Additionally, although gastric wall hyperactivity on cardiac SPECT is infrequent, it may indicate a treatable cause of chest pain or contribute to distinguishing further diagnostic evaluation regarding peptic ulcer or other gastric disorders. Therefore, a systematic review of the raw data before reading the specific images and a report of the findings should be included in cardiac SPECT reports.

Conclusion

The presented case may demonstrate that gastric wall activity on 99m Tc-sestamibi cardiac SPECT images is associated with prolonged PPI use. The authors recommend taking a history of prolonged use of PPIs to predict the increased stomach wall 99m Tc-sestamibi activity, which can interfere with the accuracy of a study. As a guide for further diagnostic tests, there should be a systematic review of the raw data before reading the images and a report of the findings should be included in cardiac SPECT reports.

References

- Javadi H, Porpiranfar MA, Semnani S et al. Scintigraphic parameters with emphasis on perfusion appraisal in rest 99mTc-sestamibi SPECT in the recovery of myocardial function after thrombolytic therapy in patients with ST elevation myocardial infarction (STEMI). *Perfusion* 2011; 26: 394–399.
- Shih WJ, McFarland KA, Kiefer V, Wierzbinski B. Illustrations of abdominal abnormalities on 99mTc tetrofosmin gated cardiac SPECT. *Nucl Med Commun* 2005; 26: 119–127.

3. Sadeghi R, Kakhki VR, Zakavi R, Momennezhad M. Gastroesophageal reflux detected on the myocardial perfusion scan with (99m)Tc-MIBI. *Hell J Nucl Med* 2008; 11: 191–192.
4. Williams KA, Hill KA, Sheridan CM. Noncardiac findings on dual-isotope myocardial perfusion SPECT. *J Nucl Cardiol* 2003; 10: 395–402.
5. Fisher C, Vehec A, Kashlan B et al. Incidental detection of skeletal uptake on sestamibi cardiac images in a patient with previously undiagnosed multiple myeloma. *Clin Nucl Med* 2000; 25: 213–214.
6. van Dongen AJ, van Rijk PP. Minimizing liver, bowel, and gastric activity in myocardial perfusion SPECT. *J Nucl Med* 2000; 41: 1315–1317.
7. Germano G, Chua T, Kiat H, Areeda JS, Berman DS. A quantitative phantom analysis of artifacts due to hepatic activity in technetium-99m myocardial perfusion SPECT studies. *J Nucl Med* 1994; 35: 356–359.
8. Peace RA, Lloyd JJ. The effect of imaging time, radiopharmaceutical, full fat milk and water on interfering extra-cardiac activity in myocardial perfusion single photon emission computed tomography. *Nucl Med Commun* 2005; 26: 17–24.
9. Hofman M, McKay J, Nandurkar D. Efficacy of milk versus water to reduce interfering infra-cardiac activity in 99mTc-sestamibi myocardial perfusion scintigraphy. *Nucl Med Commun* 2006; 27: 837–842.
10. Malhotra G, Upadhye TS, Nabar A, Asopa RV, Nayak UN, Rajan MG. Can carbonated lime drink intake prior to myocardial perfusion imaging with Tc-99m MIBI reduce the extracardiac activity that degrades the image quality and leads to fallacies in interpretation? *Clin Nucl Med* 2010; 35: 160–164.
11. Weinmann P, Moretti JL. Metoclopramide has no effect on abdominal activity of sestamibi in myocardial SPET. *Nucl Med Commun* 1999; 20: 623–625.
12. Khary VV, Nance RW, Stevens JS, Wilson RA. Gastric activity on dipyridamole 201Tl myocardial perfusion imaging: a clinically useful finding. *Nucl Med Commun* 1995; 16: 477–482.
13. Cote C, Dumont M. The clinical meaning of gastric-wall hyperactivity observed on sestamibi cardiac single-photon emission computed tomography. *Can Assoc Radiol J* 2004; 55: 178–183.
14. Gholamrezaezhad A, Moinian D, Eftekhari M, Mirpour S, Hajimohammadi H. The prevalence and significance of increased gastric wall radiotracer uptake in sestamibi myocardial perfusion SPECT. *Int J Cardiovasc Imaging* 2006; 22: 435–441.
15. Goel S, Bommireddipalli S, DePuey EG. Effect of proton pump inhibitors and H2 antagonists on the stomach wall in 99mTc-sestamibi cardiac imaging. *J Nucl Med Technol* 2009; 37: 240–243.