





RSP<http://www.rsp.fsp.usp.br/>Revista de
Saúde Pública

Seasonal variation of femoral fractures in the state of São Paulo, Southeast Brazil

Mônica Marin de Souza¹ , Eniuce Menezes de Souza¹ , Altacílio Aparecido Nunes^{II} ,
Edson Zangiacomi Martinez^{II} ¹ Universidade Estadual de Maringá. Maringá, PR, Brasil^{II} Universidade de São Paulo. Faculdade de Medicina de Ribeirão Preto. Ribeirão Preto, SP, Brasil

ABSTRACT

OBJECTIVE: To examine the effect of seasonality on femoral fracture incidence among people residing in the state of São Paulo, Brazil.**METHODS:** Ecological study based on a consecutive series of 216,348 reports of hospital admissions caused by femoral fractures. A Bayesian statistical model was used for time series analysis, considering the monthly average number of events of femoral fractures per day as a dependent variable.**RESULTS:** Among the female population, significant seasonal effects were observed only for older women, aged 60 years or more. Among younger men (aged less than 20 years) there is not a clear seasonal effect, but among the other age groups there seems to exist a higher number of cases of femoral fractures during the coldest months of the year.**CONCLUSIONS:** In general, more cases of fractures occur during the coldest months of the year; however, men and women have different patterns of incidence according to each age group.**DESCRIPTORS:** Femoral Fractures, epidemiology. Risk Factors. Seasons. Fourier Analysis. Ecological Studies.**Correspondence:**Edson Zangiacomi Martinez
Av. Bandeirantes, 3900,
Monte Alegre
14049-900 Ribeirão Preto, SP, Brasil
E-mail: edson@fmrp.usp.br**Received:** Jul 4, 2018**Approved:** Oct 22, 2018**How to cite:** Souza MM, Souza EM, Nunes AA, Martinez EZ. Seasonal variation of femoral fractures in the state of São Paulo, Southeast Brazil. Rev Saude Publica. 2019;53:55.

Copyright: This is an open-access article distributed under the terms of the Creative Commons Attribution License, which permits unrestricted use, distribution, and reproduction in any medium, provided that the original author and source are credited.



INTRODUCTION

Femoral fractures are a common cause of mortality and functional loss, mainly among older people^{1,2}. Osteoporosis is one of the main risk factors for these fractures³, and other known risk factors are falls, early menopause, and sedentary lifestyle¹⁻⁴. It is estimated that the life expectancy of patients suffering from femoral fracture is reduced from 15% to 20%⁴. A review study showed that, in Brazil, 5.5% of patients with fracture in the proximal third of the femur die during hospitalization and 4.7% die at the end of one month of follow-up⁵. The cost per femoral fracture surgery is significant to the Brazilian health system, as the direct cost of hospitalization is estimated between 4,100 and 70,000 dollars. Furthermore, the hospital medical resources used in the postoperative period accounted for 5.7% of the direct cost of hospitalization⁶.

A number of authors has studied the effects of seasonality on femoral fracture incidence⁷⁻¹⁶. According to a prospective study including 3,034 consecutive hip fracture patients in the United Kingdom, more fractures occurred during the winter compared to summer, and a tendency towards higher mortality for those patients admitted in the winter months⁷. However, this study did not show significant difference in patient characteristics between the winter and summer seasons⁷. Another study⁸ that considered the monthly number of operated proximal femoral fractures across 31 hospitals of North-West England and Scotland described an increase in the incidence of hip fractures during the months of December and January (winter months in the northern hemisphere). Douglas et al.⁹ studied the seasonal variation of hip fracture admissions at three different latitudes: Scotland, Shatin (Hong Kong), and Auckland (New Zealand). These authors also concluded that there is a higher incidence of fractures during the coldest months.

Considering the fact that most of the articles on the effects of seasonality on fracture incidence includes populations from countries of the Northern Hemisphere, the objective of this article is to describe the seasonal variation of femoral fractures in the state of São Paulo, Brazil.

METHODS

This is an ecological study, conducted over a period from January 2008 to December 2017. A total of 216,348 reports of hospital admissions caused by femoral fractures was considered. This number corresponds to approximately one quarter of the admissions reported throughout the country in this period. São Paulo is the most industrialized state in Brazil, with a population of approximately 45 million inhabitants in an area of 248,209 square kilometers (according to official statistics of the Brazilian Institute of Geography and Statistics, available in <https://cidades.ibge.gov.br/brasil/sp/panorama>). The territory is situated between the latitudes 19°46'S and 25°18'S. Data on the fracture incidence were obtained from the Hospital Information System (SIH), available from the DATASUS (Database of the Brazilian Unified Health System). The SIH includes all hospitalizations within the Unified Health System (SUS). Yearly population projections based on census data were obtained with use of the TABNET system, also available from DATASUS (<http://www2.datasus.gov.br/DATASUS/index.php>).

This study was conducted exclusively with secondary data of public access, without identification of subjects, and its procedures are in accordance with the principles of ethics in research involving human beings. Thus, the study was waived from formal review and informed consent by the institutional Research Ethics Committee. However, the study was conducted according to the Helsinki declaration and good clinical practice.

Let y_t be the number of cases of femoral fractures recorded at the month t in the state of São Paulo, divided by the number of days of the corresponding month. Thus, y_t refers to the monthly average number of events of femoral fractures per day. Considering the period

from January 2008 to December 2017, we have $t = 1, 2, \dots, 120$. The statistical data analysis was based on the time series model given by the expression

$$y_t = \beta_0 + \beta_1 t + S(t) + e_t,$$

where β_0 is an intercept, β_1 describes the trend component of the time series data, $S(t)$ is a function related to the seasonality of the time series, and the terms e_t follow an autoregressive structure of order 1, given by $e_t = \rho e_{t-1} + \varepsilon_t$. We assumed that the term ε_t follows a normal distribution with mean zero and variance σ_ε^2 . The seasonality of the time series is given by

$$S(t) = \eta_1 \sin\left(\frac{2\pi t}{12}\right) + \eta_2 \cos\left(\frac{2\pi t}{12}\right).$$

Thus, the significance of the terms η_1 and η_2 determine the significance of the seasonal pattern of the time series and its amplitude can be obtained from $\sqrt{\eta_1^2 + \eta_2^2}$. This model formulation is based on the well-known Prais-Winsten method, commonly used in epidemiological studies^{17,18}. Estimates of the parameters of interest were obtained by Bayesian methods using the Gibbs sampler. Non-informative prior distributions were used, and posterior distributions of the parameters were constructed from 500,000 simulations after a burn-in period of 10,000 simulations (initial iterations to allow simulations to stabilize).

The adequacy of the model to describe the data includes a residual analysis, where residuals (differences between the observed values for y_t and the correspondent values predicted by the model) should be a stationary time series, with non-significant serial correlation between their successive values. These assumptions were verified by graphs of the partial autocorrelation function (not shown in this article) and using the augmented Dickey-Fuller test. We used OpenBUGS software (freely available at <http://openbugs.net>) for all statistical analyses and the R language version 3.4.3 (freely available at <https://www.r-project.org/>) to generate all graphs and tables¹⁹.

RESULTS

The incidence of femoral fractures according to age groups and sex are shown in Table 1, considering the years of 2008, 2011, 2014, and 2017, with the rates per 100,000 population. These rates were obtained directly from the data and without the use of the proposed regression model. We can observe that the fracture incidence is higher among men than women, considering the age groups up to 60 years. However, after the age of 70 years, the

Table 1. Incidence of femoral fractures in man and women per 100,000 population per year, state of São Paulo, Brazil, years of 2008, 2011, 2014 and 2017.

Age groups (years)	Men				Women			
	2008	2011	2014	2017	2008	2011	2014	2017
0–4	19.5	19.1	21.8	19.8	10.9	9.2	10.3	9.4
5–9	14.8	12.4	13.9	11.6	7.7	8.0	6.9	6.9
10–14	22.0	22.0	18.9	17.5	8.9	9.2	6.3	7.2
15–19	45.7	54.2	53.5	46.8	12.9	12.0	12.1	12.1
20–29	56.9	59.7	57.4	54.4	9.2	11.9	10.3	11.0
30–39	32.5	39.0	37.6	34.0	6.3	6.5	6.2	8.1
40–49	36.8	36.9	36.0	37.5	8.9	9.5	7.5	8.7
50–59	48.0	49.8	50.8	53.6	23.2	25.9	21.0	23.3
60–69	90.0	86.2	74.9	86.8	83.7	81.3	72.1	82.1
70–79	200.0	202.8	179.9	188.3	306.0	306.5	286.8	300.8
80 or more	594.4	550.7	496.2	553.1	1,007.5	981.5	901.0	941.7
Total	50.0	53.2	52.0	54.3	43.0	46.8	45.9	53.4

incidence is much higher among women than among men. For each age group, there are no significant differences between the incidences when compared between all four years described in Table 1.

Panels (a) and (b) in Figure 1 compare the observed time series for the monthly average number of events of femoral fractures per day and the values estimated from the proposed Bayesian model. The model was separately fitted to data for both sexes. It is possible to observe that the predicted values are close to the observed values, suggesting a reasonable fit of the model to the data in both cases. We also fitted alternative models for the data while considering that the e_t terms follow an autoregressive structure of order 2, but we did not observe an expressive improvement in the fit compared to the previous models (comparisons between models were based on the deviance information criterion).

Bayesian estimates for the model parameters are shown in Table 2, with their correspondent 95% credible intervals. The 95% credible intervals are the Bayesian equivalent of standard confidence intervals, representing the central 95% of the range of values that are credible for the parameter estimated. While the values for the β_0 parameter are interpreted as hypothetical means when $t = 0$ (a “starting point” for the series), the values for β_1 are positive for both sexes, indicating an increasing trend over time. This increase is probably a result of the process of population aging occurring in the state of São Paulo during the studied period. As intuitive visual inclinations in Figure 1, the estimated increasing trend for

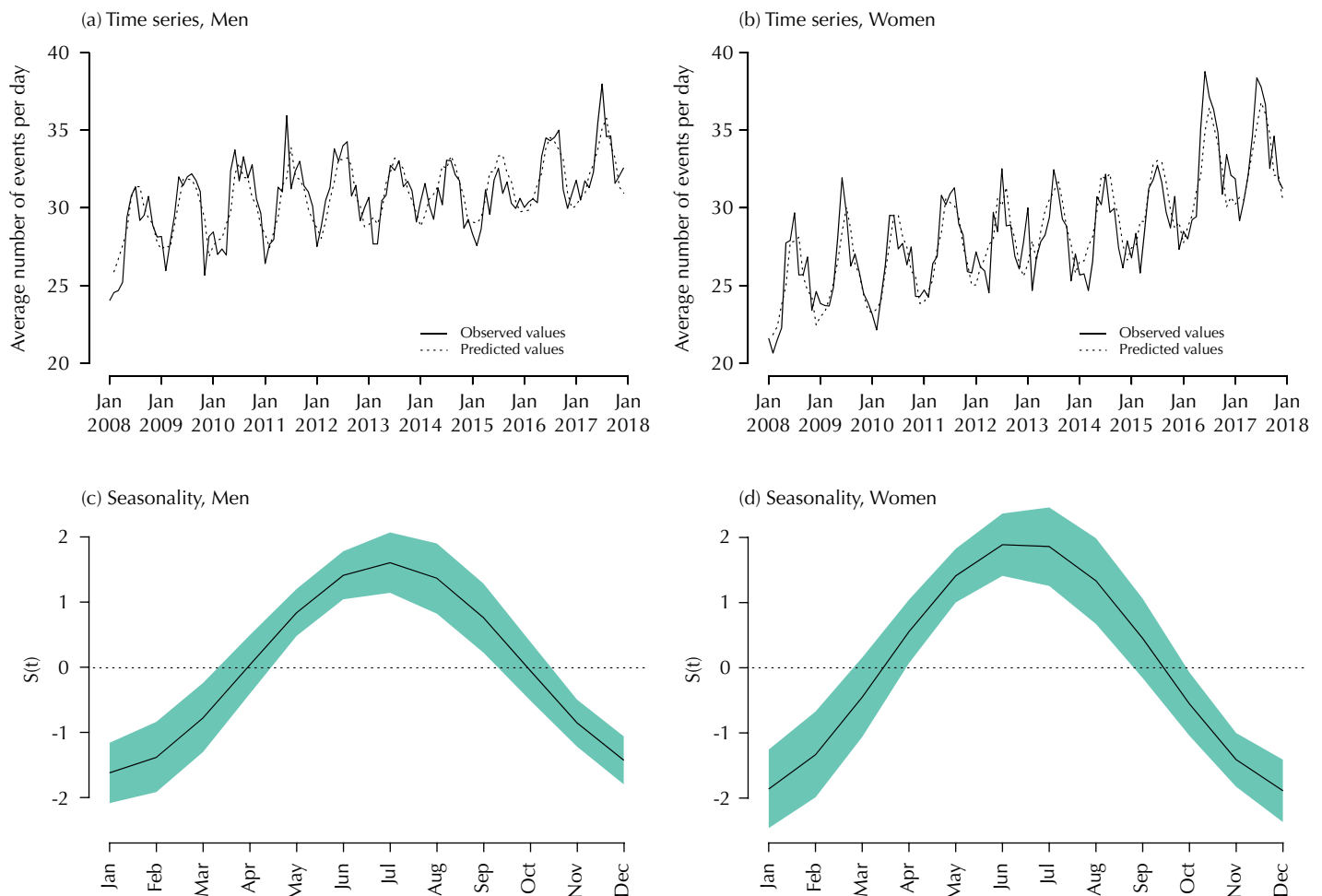
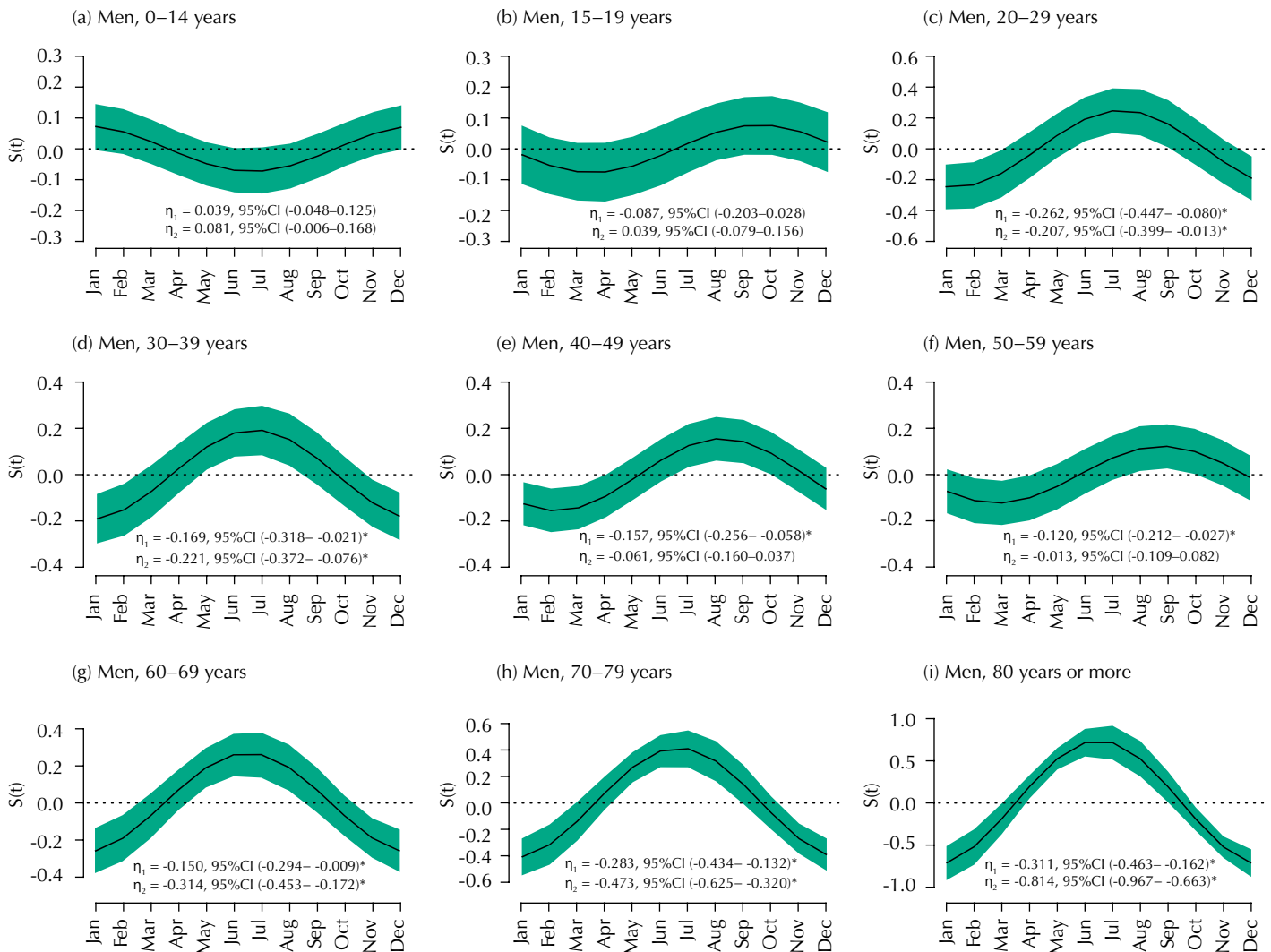


Figure 1. Panels (a) and (b): observed and predicted time series describing the monthly average number of events of femoral fractures per day, from January 2008 to December 2017, in the state of São Paulo, Brazil. Panels (c) and (d): graphs for the seasonality function $S(t)$ of the time series, according to the months of femoral fractural occurrence. The green areas correspond to Bayesian credible regions.

Table 2. Bayesian estimates for the model parameters, including the monthly average number of events of femoral fractures per day, period from January 2008 to December 2017, state of São Paulo, Brazil.

Parameter	Men		Women	
	Estimate	95%CI	Estimate	95%CI
β_0	28.98	(28.16–29.80)	24.07	(22.96–25.16)
β_1	0.029	(0.017–0.041)	0.073	(0.057–0.088)
η_1	-1.540	(-2.026– -1.036)	-1.502	(-2.127– -0.881)
η_2	-1.655	(-2.145– -1.164)	-2.463	(-3.084– -1.853)
ρ	0.356	(0.175–0.536)	0.415	(0.241–0.593)



* Statistically significant effects.

Figure 2. Graphs for the seasonality function $S(t)$ of the time series, according to the months of femoral fracture occurrence, stratified by age groups and considering the male population. The green areas correspond to Bayesian credible regions.

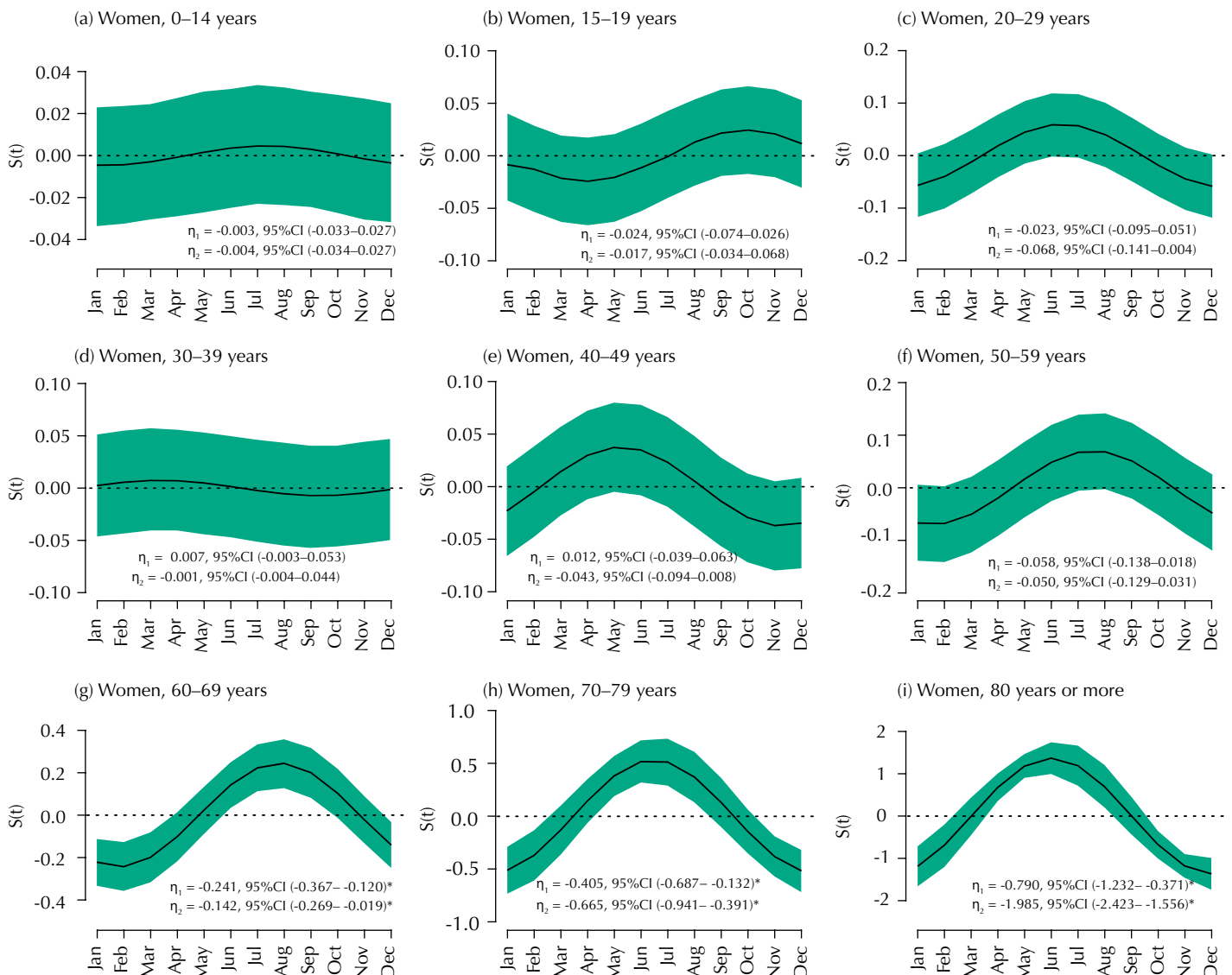
women is a bit stronger than for men. The 95% credible intervals for η_1 and η_2 do not include zero, indicating a significant seasonal effect for both time series. Credible intervals for the autoregressive coefficient ρ also do not include zero, indicating a significant and positive correlation between successive values of e_t in the time series.

Panels (c) and (d) in Figure 1 show graphs for the seasonality function $S(t)$ of the time series, according to the months during which femoral fractures occurred. The graphs evidence that a higher number of fracture cases were reported between June

and August, the coldest months in the Southern Hemisphere. The green areas in the graphs correspond to Bayesian credible regions, which is the interval in which we are 95% sure the true curves lie.

Figure 2 shows plots of the seasonal effects given by the function $S(t)$ stratified by age groups and considering the male population. In each graph, when the horizontal line crossing the zero is entirely within the Bayesian credible region, we also have an indicative that the seasonal effect is not significant. Note that it was not possible to standardize the y-axis scales of these plots, which would impair the visualization of curve behavior. Therefore, we have not found significant seasonal effects for the age groups 0–14 and 15–19 years. Unlike other age groups, where a higher number of fracture cases were reported between June and August, it was observed a higher incidence between August and September among men aged 40–49 and 50–59 years.

Figure 3 shows plots of the seasonal effects given by the $S(t)$ function stratified by age groups and considering the female population. We observe significant seasonal effects only for older women aged 60 years or more. Among the age group 60–69, more cases of fractures were reported between July and September, while a higher incidence was observed between May and August among women aged 70–79 and 80 years or more.



* Statistically significant effects.

Figure 3. Graphs for the seasonality function $S(t)$ of the time series, according to the months of femoral fracture occurrence, stratified by age groups and considering the female population. The green areas correspond to Bayesian credible regions.

DISCUSSION

The results shown in Table 1 show that the incidence of femoral fractures among men increased steadily with age, up to the age group of 20–29 years (54.4 cases per 100,000 in 2017). It is possible that men of this age group are more subject to risks due to activities related to work and sports. The incidence among men decreased in the age group of 30–39 years and again increased steadily with age, up to the age group of 80 years or more. Incidence of femoral fractures was lower in women than in men before the age group of 60–69 years. In the age group of 60–69 years the incidence is similar between men and women, and after the age of 70 years, the incidence is much higher among women than among men. The number of fractures that are due to osteoporosis can explain these differences³.

In the time series analysis using the Bayesian model, results in Table 2 and Figure 1 (Panels (c) and (d)) shows an important seasonal variation in the incidence of femoral fractures with a higher incidence during the coldest months compared to the summer period. This supports findings from several other studies^{7–16} although reasons for this variation remain uncertain. Among possible hypotheses, Douglas et al.⁹ state that winters are darker as well as colder, and this may add to the number of falls in this season. While Ralis¹⁵ attributed the fractures to slipping on ice and snow, other authors describe that many cases in the winter time occur in indoor environments. Bastow et al.²⁰ proposed that undernutrition of older people is a risk factor for hypothermia in cold weather, and hypothermia could lead to impairment of judgement and co-ordination, and consequently, to injury. Chiu et al.²¹ postulated that the hindrance of free movements and increased clumsiness of patients with many layers of clothes put on during the cold weather might be associated to an increase of the incidence of fractures. The study from Mazzucchelli et al.²² showed a short-term association between several indicators of air pollution and daily hospital admissions due to osteoporotic fracture, which can also in part explain the seasonal variations in the numbers of femur fractures. Other articles support the role of the low exposure to sunshine in the vitamin D deficiency²³. According to this hypothesis, the low serum concentration of 25-hydroxyvitamin D leads to a low 1,25-dihydroxyvitamin D concentration and then to a higher serum parathyroid hormone concentration, especially during the winter season²³. On the other hand, a low level of parathyroid activity can be associated with high bone turnover, leading to cortical bone loss and low density bone. Lastly, this effect may lead to fracture²³.

Results in Figures 2 and Figure 3 demonstrate the strong effect of sex and age groups on the seasonal patterns of the time series. Figure 2 shows that among younger men (aged less than 20 years) there is not a clear seasonal effect, but among the other age groups there seems to exist a higher number of cases of femoral fractures in the coldest months of the year. On the other hand, results in Figure 3 show that women sustaining femoral fractures during the coldest months were older (aged more than 60 years) and probably less active. Again, it is unclear what mechanism may exist to elicit this phenomenon with precision, as many of the probable reasons for femoral fracture, mentioned in the previous paragraph, may also act in this scenario. So, future research conducted in specific patient populations may include more variables that best describe these cases, such as the environment in which the fracture occurred (outdoor or indoor), the form of the accident (e.g. falls, traffic accident, sports accidents, stumbling on an object), the severity of the trauma, among others.

If we observe the results in Table 1, Table 2, and Figure 1 (Panels (a) and (b)) for men and women, the estimated average of fractures per day at the beginning of the analysis (January 2008) was almost 29 (95% credible interval from 28.16 to 29.80) and about 24 (95% credible interval from 22.96 to 25.16). After that, a stronger trend for woman (0.073 which means an increase of about one case each 14 days) than for man (0.029 meaning an increase of about one case each 35 days) has conducted this group to reach high rates of fractures per day in the last two years. Furthermore, the contribution of the seasonal term, expressed by its amplitude, is slightly stronger for women (2.88) than for men (2.26), although, on average, that is less evident, as shown in Figure 3.

A potential limitation of this study is the underreporting of the events and the possibility of femoral fracture miscoding. The Hospital Information System (SIH) has incomplete coverage and there are uncertainties about the reliability of its data²⁴. It covers only records obtained from the hospitals affiliated to the Brazilian Unified Health System (SUS), excluding the admissions from the Private Health System (PHS) and the Supplementary Health System (SHS), which are administrated by private healthcare insurance companies or health cooperatives. Moreover, due to its ecological design, we cannot draw causal inferences about the effects of the different seasons of the year on fracture incidence. However, despite its descriptive nature, findings of our study are useful for better understand how fracture occurrences are distributed over time. This information is useful for the future planning of health care.

In conclusion, more cases of fractures occur in the coldest months of the year; however, men and women have different patterns of incidence according to each age group.

REFERENCES

1. Raju R, Pashupati C, Pramila R, Rajiv M, Prasad KR, Das KJ, et al. A study to evaluate functional outcomes of distal femur fractures. *Int J Orthop Sci.* 2017;3(4):602-5. <https://doi.org/10.22271/ortho.2017.v3.i4i.81>
2. Kharazmi M, Hallberg P, Schilcher J, Aspenberg P, Michaëlsson K. Mortality after atypical femoral fractures: a cohort study. *J Bone Miner Res.* 2016;31(3):491-7. <https://doi.org/10.1002/jbmr.2767>
3. Dore N, Kennedy C, Fisher P, Dolovich L, Farrauto L, Papaioannou A. Improving care after hip fracture: the fracture? Think osteoporosis (FTOP) program. *BMC Geriatr.* 2013;13:130. <https://doi.org/10.1186/1471-2318-13-130>
4. Haentjens P, Magaziner J, Colón-Emeric CS, Vanderschueren D, Milisen K, Velkeniers B, et al. Meta-analysis: excess mortality after hip fracture among older women and men. *Ann Intern Med.* 2010;152(6):380-90. <https://doi.org/10.7326/0003-4819-152-6-201003160-00008>
5. Sakaki MH, Oliveira AR, Coelho FF, Leme LEG, Suzuki I, Amatuzzi MM. Study of the proximal femoral fractures mortality in elderly patients. *Acta Ortop Bras.* 2004;12(4):242-9. <https://doi.org/10.1590/S1413-78522004000400008>
6. Arndt ABM, Telles JL, Kowalski SC. [Direct cost of femoral fracture from falls in elderly: analysis of the private section health in the city of Brasília, 2009]. *Rev Bras Geriatr. Gerontol.* 2011;14(2):221-31. Portuguese. <https://doi.org/10.1590/S1809-98232011000200004>
7. Crawford JR, Parker MJ. Seasonal variation of proximal femoral fractures in the United Kingdom. *Injury.* 2003;34(3):223-5. [https://doi.org/10.1016/S0020-1383\(02\)00211-5](https://doi.org/10.1016/S0020-1383(02)00211-5)
8. Jena D, Muddu BN, Richardson JB. Seasonal variation of proximal femoral fractures. *Orthopaedic Proc.* 2003;85 Suppl II:117.
9. Douglas S, Bunyan A, Chiu KH, Twaddle B, Maffulli N. Seasonal variation of hip fracture at three latitudes. *Injury.* 2000;31(1):11-9. [https://doi.org/10.1016/S0020-1383\(99\)00192-8](https://doi.org/10.1016/S0020-1383(99)00192-8)
10. Jacobsen SJ, Goldberg J, Miles TP, Brody JA, Stiers W, Rimm AA. Seasonal variation in the incidence of hip fracture among white persons aged 65 years and older in the United States, 1984-1987. *Am J Epidemiol.* 1991;133(10):996-1004. <https://doi.org/10.1093/oxfordjournals.aje.a115819>
11. Jacobsen SJ, Sargent DJ, Atkinson EJ, O'Fallon WM, Melton LJ 3rd. Population based study of the contribution of cold weather to hip fracture seasonality. *Am J Epidemiol.* 1995;141(1):79-83. <https://doi.org/10.1093/oxfordjournals.aje.a117348>
12. Lau EMC, Gillespie BG, Valenti L, O'Connell D. The seasonality of hip fracture and its relationship with weather conditions in New South Wales. *Aust J Public Health.* 1995;19(1):76-80. <https://doi.org/10.1111/j.1753-6405.1995.tb00301.x>
13. Parker J, Martin S. Falls, hip fractures and the weather. *Eur J Epidemiol.* 1994;10(4):441-2. <https://doi.org/10.1007/BF01719669>
14. Pedrazzoni M, Alfano FS, Malvi C, Ostanello F, Passeri M. Seasonal variation in the incidence of hip fractures in Emilia-Romagna and Parma. *Bone.* 1993;14 Suppl 1:S57-63. [https://doi.org/10.1016/8756-3282\(93\)90351-A](https://doi.org/10.1016/8756-3282(93)90351-A)

15. Ralis ZA. Epidemic of fractures during periods of snow and ice. *Br Med J (Clin Res Ed)*. 1986;293(6545):484. <https://doi.org/10.1136/bmj.293.6545.484>
16. Mazzucchelli R, Crespí-Villarías N, Pérez-Fernández E, Durbán Reguera ML, Guzón Illescas O, Quirós J, et al. Weather conditions and their effect on seasonality of incident osteoporotic hip fracture. *Arch Osteoporos*. 2018;13(1):28. <https://doi.org/10.1007/s11657-018-0438-4>
17. Gil-Alana LA. Long memory, seasonality and time trends in the average monthly temperatures in Alaska. *Theor Appl Climatol*. 2012;108(3-4):385-96. <https://doi.org/10.1007/s00704-011-0539-0>
18. Antunes JLF, Cardoso MRA. [Using time series analysis in epidemiological studies]. *Epidemiol Serv Saude*. 2015;24(3):565-76. Portuguese. <https://doi.org/10.5123/S1679-49742015000300024>
19. Crawley MJ. *Statistics: an introduction using R*. 2.ed. Chichester (UK): Wiley; 2014.
20. Bastow MD, Rawlings J, Allison SP. Undernutrition, hypothermia, and injury in elderly women with fractured femur: an injury response to altered metabolism? *Lancet*. 1983;1(8317):143-6. [https://doi.org/10.1016/S0140-6736\(83\)92754-X](https://doi.org/10.1016/S0140-6736(83)92754-X)
21. Chiu KP, Ng TP, Chow SP. Seasonal variation of fractures of the hip in elderly persons. *Injury*. 1996;27(5):333-6. [https://doi.org/10.1016/0020-1383\(95\)00232-4](https://doi.org/10.1016/0020-1383(95)00232-4)
22. Mazzucchelli R, Crespí Villarias N, Perez Fernandez E, Durban Reguera ML, Garcia-Vadillo A, Quiros FJ, et al. Short-term association between outdoor air pollution and osteoporotic hip fracture. *Osteoporos Int*. 2018;29(10):2231-41. <https://doi.org/10.1007/s00198-018-4605-7>
23. Lips P. Vitamin D deficiency and secondary hyperparathyroidism in the elderly: consequences for bone loss and fractures and therapeutic implications. *Endocr Rev*. 2001;22(4):477-501. <https://doi.org/10.1210/edrv.22.4.0437>
24. Bittencourt SA, Camacho LAB, Leal MC. [Hospital Information Systems and their application in public health]. *Cad Saude Publica*. 2006;22(1):19-30. Portuguese. <https://doi.org/10.1590/S0102-311X2006000100003>

Funding: This study was financed in part by the Coordenação de Aperfeiçoamento de Pessoal de Nível Superior - Brasil (CAPES - Finance Code 001).

Authors' Contribution: Design and planning of the study: MMS, EZM, EMS. Collection, analysis, and interpretation of the data: MMS, EZM, EMS, AAN. Preparation or review of the study: MMS, EZM, EM, AAN. Approval of the final version: MMS, EZM, EMS, AAN. Public responsibility for the content of the article: MMS, EZM, EMS, AAN.

Conflict of Interest: The authors declare no conflict of interest.