

# Septic Pulmonary Embolism Requiring Critical Care: Clinicoradiological Spectrum, Causative Pathogens and Outcomes

Deng-Wei Chou,<sup>I,II,\*</sup> Shu-Ling Wu,<sup>III</sup> Kuo-Mou Chung,<sup>IV</sup> Shu-Chen Han,<sup>V</sup> Bruno Man-Hon Cheung<sup>IV</sup>

<sup>I</sup>Tainan Municipal Hospital, Department of Critical Care Medicine, Tainan/Taiwan. <sup>II</sup> Chung-Hwa University of Medical Technology, Department of Nursing, Tainan/Taiwan. <sup>III</sup> Chung-Hwa University of Medical Technology, Department of Long Term Care, Tainan/Taiwan. <sup>IV</sup> Tainan Municipal Hospital, Department of Internal Medicine, Tainan/Taiwan. <sup>V</sup> Tainan Municipal Hospital, Department of Radiology, Tainan/Taiwan.

**OBJECTIVES:** Septic pulmonary embolism is an uncommon but life-threatening disorder. However, data on patients with septic pulmonary embolism who require critical care have not been well reported. This study elucidated the clinicoradiological spectrum, causative pathogens and outcomes of septic pulmonary embolism in patients requiring critical care.

**METHODS:** The electronic medical records of 20 patients with septic pulmonary embolism who required intensive care unit admission between January 2005 and December 2013 were reviewed.

**RESULTS:** Multiple organ dysfunction syndrome developed in 85% of the patients, and acute respiratory failure was the most common organ failure (75%). The most common computed tomographic findings included a feeding vessel sign (90%), peripheral nodules without cavities (80%) or with cavities (65%), and peripheral wedge-shaped opacities (75%). The most common primary source of infection was liver abscess (40%), followed by pneumonia (25%). The two most frequent causative pathogens were *Klebsiella pneumoniae* (50%) and *Staphylococcus aureus* (35%). Compared with survivors, nonsurvivors had significantly higher serum creatinine, arterial partial pressure of carbon dioxide, and Acute Physiology and Chronic Health Evaluation II and Sequential Organ Failure Assessment scores, and they were significantly more likely to have acute kidney injury, disseminated intravascular coagulation and lung abscesses. The in-hospital mortality rate was 30%. Pneumonia was the most common cause of death, followed by liver abscess.

**CONCLUSIONS:** Patients with septic pulmonary embolism who require critical care, especially those with pneumonia and liver abscess, are associated with high mortality. Early diagnosis, appropriate antibiotic therapy, surgical intervention and respiratory support are essential.

**KEYWORDS:** Septic Pulmonary Embolism; Intensive Care Unit; Pneumonia; Liver Abscess.

Chou DW, Wu SL, Chung KM, Han SC, Cheung BM. Septic Pulmonary Embolism Requiring Critical Care: Clinicoradiological Spectrum, Causative Pathogens and Outcomes. Clinics. 2016;71(10):562-569

Received for publication on April 15, 2016; First review completed on May 30, 2016; Accepted for publication on July 1, 2016

\*Corresponding author. E-mail: choudw@gmail.com

## INTRODUCTION

Septic pulmonary embolism (SPE) is an uncommon disorder in which a microorganism-containing thrombus causes an inflammatory reaction and a mechanical obstruction in the pulmonary vasculature (1,2). Typical findings of SPE on computed tomography (CT) include peripheral nodules with or without cavitations, a feeding vessel sign, wedge-shaped peripheral lesions abutting the pleura and abscesses (2–5). Most patients with SPE are diagnosed on the basis of CT findings and the presence of a primary source of infection (2–4)

because histopathological confirmation is typically unfeasible in clinical practice (2). The clinical presentations of SPE range from insidious illness with mild respiratory symptoms to respiratory failure and septic shock (6). Despite its life-threatening nature, data on patients with SPE who require critical care have not been well reported. Therefore, the aim of this study was to elucidate the clinicoradiological spectrum, causative pathogens, and outcomes of SPE for patients requiring intensive care unit (ICU) admission.

## MATERIALS AND METHODS

### Patient selection

This study was conducted in the ICU (mixed medical-surgical 40-bed unit with approximately 2,300 annual admissions) of Tainan Municipal Hospital, a referral teaching hospital in Southern Taiwan. We performed a retrospective computer-aided search to identify the electronic medical

Copyright © 2016 CLINICS – This is an Open Access article distributed under the terms of the Creative Commons License (<http://creativecommons.org/licenses/by/4.0/>) which permits unrestricted use, distribution, and reproduction in any medium or format, provided the original work is properly cited.

No potential conflict of interest was reported.

DOI: 10.6061/clinics/2016(10)20



records of patients consecutively admitted to the ICU with a diagnosis of SPE between January 2005 and December 2013. Our inclusion criteria for SPE diagnosis were adapted from Cook et al. (2): a CT scan showing multiple nodular opacities or multifocal lung infiltrates compatible with septic embolism to the lung; the presence of a primary source of infection as a potential embolic source; and clinical and radiographic improvement after antibiotic therapy. Patients with a diagnosis of lung tumor, tuberculosis, or possible lung metastasis were excluded from the study. In total, 20 (12 male and 8 female) patients met the study criteria.

### Data collection

The following data for the study patients were collected: age, gender, underlying conditions, biochemistry results, causative pathogens, Acute Physiology and Chronic Health Evaluation II (APACHE-II) score at ICU admission, Sequential Organ Failure Assessment (SOFA) score at ICU admission, clinical complications, length of stay in ICU and outcome.

### CT examinations

During the 9-year study period, CT scans were obtained using two multidetector CT scanners, namely, a GE Light-Speed VCT 64-slice CT scanner (GE Healthcare, Milwaukee, USA) and a GE BrightSpeed Elite Select 16-slice CT scanner (GE Healthcare, Milwaukee, USA). The CT scanning parameters were as follows: 120 kV, 100–320 mA, 0.8-second rotation time, and 5-mm collimation (a feeding vessel sign was obtained with 1.25-mm collimation on a lung window). The images were reviewed at a lung-window setting level of -700 Hounsfield units (HU) with a width of 1500 HU and a mediastinum-window setting level of 40 HU with a width of 350 HU. Thoracic CT examinations were performed within 7 days of admission.

### Image interpretation

Two chest physicians (Chou DW and Chung KM with 17 and 22 y of experience in chest CT image interpretation, respectively) independently evaluated the thoracic CT images and follow-up chest radiographs from the 20 patients. The images were assessed for the following radiological patterns: a feeding vessel sign, peripheral wedge-shaped opacities, nodules with or without cavities, patchy ground-glass opacities, focal consolidations, lung abscesses and pleural effusions. Discrepancies were resolved by an experienced chest radiologist (Han SC, who has 20 y of experience in chest CT image interpretation).

### Statistical analysis

Data were analyzed using SPSS Version 16.0 (SPSS Inc., Chicago, IL, USA). Categorical and continuous variables of survivors and non-survivors were compared using Fisher's exact test and the Mann-Whitney U test, respectively. All data are expressed as the mean ( $\pm$ SD). For all analyses,  $p < 0.05$  was considered statistically significant.

### Definitions

APACHE-II and SOFA scores at ICU admission were calculated as described in the literature (7,8). Acute respiratory failure was defined as an arterial partial pressure of oxygen  $< 60$  mmHg or an arterial partial pressure of carbon dioxide ( $\text{PaCO}_2$ )  $> 50$  mmHg to produce respiratory acidosis

( $\text{pH} < 7.35$ ) while breathing air at normal atmospheric pressure. The diagnostic criterion for acute kidney injury (AKI) was an increase in serum creatinine by at least 0.3 mg/dL within 48 hours (9). The Berlin definition of acute respiratory distress syndrome (ARDS) was employed (10). Disseminated intravascular coagulation (DIC) was diagnosed using a scoring system proposed by the International Society on Thrombosis and Haemostasis (11). Ground-glass attenuation (GGA) was defined as a hazy increase in attenuation without obscuration of vascular markings, and focal consolidation was defined as a localized increase in lung attenuation with obscuration of vascular markings (12).

### Ethics

We could not obtain informed consent from the patients due to the use of a retrospective study design. Therefore, we posted an announcement about the study. This study does not present data that could be used to identify the patients and was approved by the Institutional Review Board (SCMH IRB: 1011202) of Tainan Municipal Hospital.

## RESULTS

The study included 12 male and 8 female patients with a mean age of  $56.5 \pm 13.0$  years (range, 29–80 y). All 20 patients were admitted through the emergency department, and 15 (75%) were directly admitted to the ICU. The diagnosis of SPE was made on the day of admission for 10 (50%) patients and within 7 days of admission for the remaining 10 (50%) patients. Table 1 presents a comparison of the clinicoradiological characteristics of the survivors and nonsurvivors. Diabetes mellitus was the major underlying condition ( $n=13$ , 65%). Six patients (30%) died during hospitalization, and fourteen patients (70%) recovered from their illness. The survivors and nonsurvivors did not significantly differ in demographic data, pathogens, or length of stay in the ICU. Regarding underlying conditions, a history of hypertension was significantly more common (50% vs. 7%,  $p=0.028$ ) in the nonsurvivors; however, no significant difference was observed in the incidence of diabetes mellitus, cerebrovascular disease, excessive alcoholic consumption or end-stage renal disease. Regarding biochemistry data, the nonsurvivors had significantly higher serum creatinine ( $2.93 \pm 2.4$  vs.  $1.49 \pm 0.5$ ,  $p=0.039$ ) and  $\text{PaCO}_2$  ( $42.7 \pm 13.0$  vs.  $29.7 \pm 9.3$ ,  $p=0.021$ ) levels than the survivors. However, the nonsurvivors had significantly lower arterial pH ( $7.22 \pm 0.2$  vs.  $7.39 \pm 0.1$ ,  $p=0.01$ ). Serum C-reactive protein and sodium levels were non-significantly higher in the nonsurvivors compared to the survivors ( $p=0.053$  and  $0.056$ , respectively). No differences were seen in white blood cell count, platelets, albumin, blood urea nitrogen, potassium, arterial  $\text{HCO}_3^-$ , or glycosylated hemoglobin. At ICU admission, the nonsurvivors had significantly higher mean APACHE II ( $31 \pm 6.0$  vs.  $18 \pm 6.0$ ,  $p < 0.001$ ) and mean SOFA scores ( $12 \pm 3.4$  vs.  $8 \pm 2.6$ ,  $p=0.01$ ) compared to the survivors. The most common complication was acute respiratory failure ( $n=15$ , 75%), followed by septic shock ( $n=12$ , 60%), AKI ( $n=5$ , 25%), acute respiratory distress syndrome ( $n=3$ , 15%) and DIC ( $n=2$ , 10%). Compared with the survivors, the incidences of AKI (67% vs. 7%,  $p=0.005$ ) and DIC (33% vs. 0,  $p=0.023$ ) were significantly higher in the nonsurvivors. The mean length of stay in the ICU was  $12.6 \pm 8.9$  days. Six patients died of multiple organ dysfunction syndrome (MODS) during hospitalization (for an in-hospital mortality or 30%). The post-hospital discharge follow-up



**Table 1** - Comparison of clinicoradiological characteristics between survivors and nonsurvivors.

Variables	Total N =20 (%)	Survivors N =14 (%)	Nonsurvivors N =6 (%)	p
Age (yr)	56.5 ± 13.0	55.7 ± 11.6	58.2 ± 16.8	NS
Gender (M/F)	12/8	7/7	5/1	NS
Direct admission to the intensive care unit	15 (75)	10 (71)	5 (83)	NS
Underlying conditions				
Diabetes mellitus	13 (65)	9 (64)	4 (67)	NS
Hypertension	4 (20)	1 (7)	3 (50)	0.028
Cerebrovascular disease	4 (20)	2 (14)	2 (33)	NS
Excessive alcoholic consumption	2 (10)	1 (7)	1 (17)	NS
End stage renal disease	1 (5)	0	1 (17)	NS
Biochemistry data				
White blood cell count (10 <sup>9</sup> /L)	19.4 ± 11.5	22.4 ± 11.4	12.5 ± 8.8	NS
Platelet (10 <sup>9</sup> /L)	106.1 ± 108.6	96.5 ± 114.9	128.3 ± 98.3	NS
C-reactive protein (mg/dL)	25.5 ± 9.7	23.4 ± 8.8	37.5 ± 3.1	NS
Albumin (g/dL)	2.5 ± 0.5	2.5 ± 0.4	2.4 ± 0.7	NS
Blood urea nitrogen (mg/dL)	46.9 ± 25.8	40.7 ± 19.7	61.3 ± 34.1	NS
Creatinine (mg/dL)	1.92 ± 1.5	1.49 ± 0.5	2.93 ± 2.4	0.039
Sodium (mEq/L)	135.1 ± 11.0	132.0 ± 8.8	142.2 ± 13.2	NS
Potassium (mEq/L)	3.9 ± 1.1	3.78 ± 0.9	4.16 ± 1.4	NS
Arterial blood gas				
pH	7.34 ± 0.13	7.39 ± 0.1	7.22 ± 0.2	0.01
PaCO <sub>2</sub> (mmHg)	33.6 ± 11.9	29.7 ± 9.3	42.7 ± 13.0	0.021
HCO <sub>3</sub> <sup>-</sup> (mmol/L)	17.9 ± 4.6	18.1 ± 3.6	17.6 ± 6.7	NS
Glycosylated hemoglobin (%)	12.3 ± 3.0	12.5 ± 3.6	11.7 ± 0.7	NS
Pathogens				
Gram-negative infection	13 (65)	9 (64)	4 (67)	NS
Gram-positive infection	7 (35)	5 (36)	2 (33)	NS
Scoring systems at ICU admission				
APACHE II score	22 ± 8.6	18 ± 6.0	31 ± 6.0	<0.001
SOFA score	9 ± 3.3	8 ± 2.6	12 ± 3.4	0.01
Complications				
Acute respiratory failure	15 (75)	10 (71)	5 (83)	NS
Septic shock	12 (60)	7 (50)	5 (83)	NS
Acute kidney injury	5 (25)	1 (7)	4 (67)	0.005
Acute respiratory distress syndrome	3 (15)	1 (7)	2 (33)	NS
Disseminated intravascular coagulopathy	2 (10)	0	2 (33)	0.023
Length of stay in ICU (d)	12.6 ± 8.9	10.7 ± 3.7	17.0 ± 15.1	NS
Computed tomographic findings				
A feeding vessel sign	18 (90)	12 (86)	6 (100)	NS
Nodule without cavity	16 (80)	11 (79)	5 (83)	NS
Peripheral wedge-shaped opacity	15 (75)	9 (64)	6 (100)	NS
Nodule with cavity	13 (65)	9 (64)	4 (67)	NS
Pleural effusion	13 (65)	10 (71)	3 (50)	NS
Focal consolidation	8 (40)	5 (36)	3 (50)	NS
Lung abscess	6 (30)	2 (14)	4 (67)	0.019
Patchy ground-glass attenuation	4 (20)	2 (14)	2 (33)	NS
Bilateral lesions	16 (80)	11 (79)	5 (83)	NS

APACHE: Acute Physiology and Chronic Health Evaluation; ICU: Intensive care unit; NS: Not significant; SOFA: Sequential Organ Failure Assessment

duration for the 14 survivors ranged from 4 to 48 months; none of the survivors had SPE-related complications.

More than two imaging findings were obtained for each patient. Sixteen (80%) patients exhibited lesions in the bilateral lungs. The CT findings included a feeding vessel sign (90%), nodules without cavities (80%), peripheral wedge-shaped opacities (75%), nodules with cavities (65%), pleural effusions (65%), focal consolidations (40%), lung abscesses (30%), and patchy ground-glass opacities (20%). Compared with the survivors, the nonsurvivors were significantly more likely to have lung abscesses (67% vs. 14%,  $p=0.019$ ). Follow-up chest radiography for the 14 survivors revealed that ill-defined infiltrates and nodular opacities were resolved within 7–14 days and 14–60 days, respectively.

Table 2 shows the causative pathogens, primary sources of infection, and surgical procedures for the 20 patients. All 20 patients had positive blood cultures. The most common

causative pathogen was *Klebsiella pneumoniae* ( $n=10$ , 50%), followed by *Staphylococcus aureus* ( $n=7$ , 35%), *Pseudomonas aeruginosa* ( $n=1$ , 5%), *Escherichia coli* ( $n=1$ , 5%), and *Salmonella* group B ( $n=1$ , 5%). The most common primary source of infection was liver abscess (Figure 1) ( $n=8$ , 40%), followed by pneumonia (Figure 2) ( $n=5$ , 25%), tricuspid valve infective endocarditis (Figure 3) ( $n=3$ , 15%), renal abscess (Figure 4) ( $n=2$ , 10%), deep neck infection ( $n=1$ , 5%) and soft tissue abscess ( $n=1$ , 5%). Three, two and one of the nonsurvivors had pneumonia, liver abscess and deep neck infection, respectively. Among the ten patients with *K. pneumoniae* as the causative pathogen, eight, one and one patient had liver abscess, deep neck infection and renal abscess, respectively. Among the seven patients with *S. aureus* as the causative pathogen, four had pneumonia and three had tricuspid valve infective endocarditis. Antibiotic therapy was initiated in all patients on the day of admission and was administered for

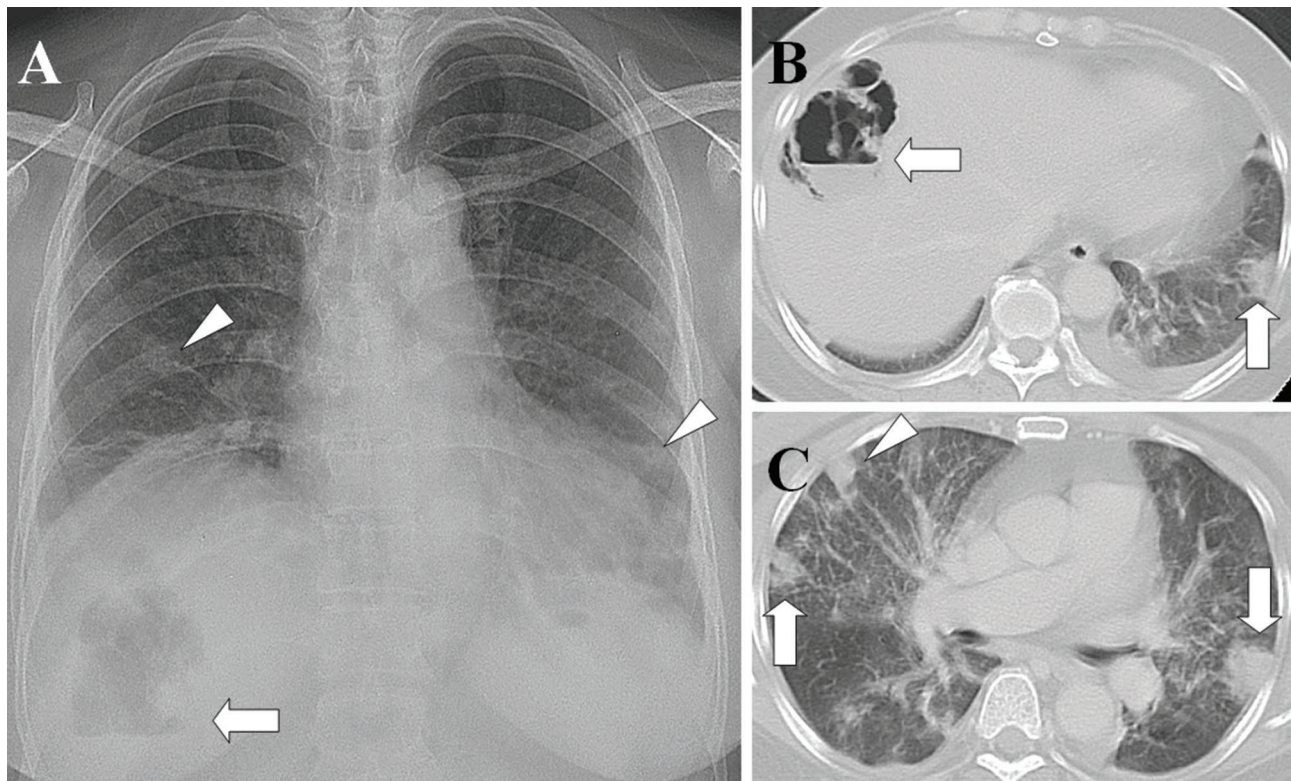




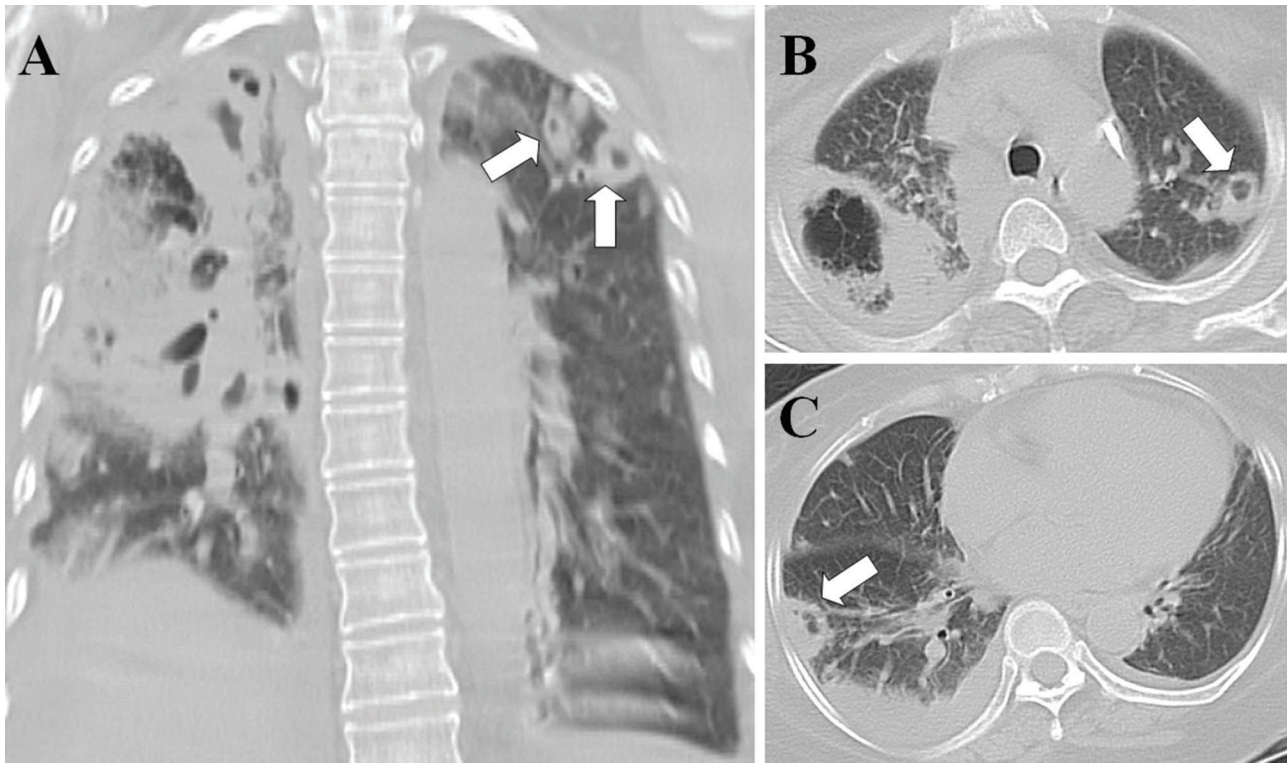
**Table 2** - Causative pathogens, primary sources of infection, and surgical procedures for the 20 patients

No.	Pathogen	Primary source of infection	Culture site	Procedure	Outcome
1	Methicillin-susceptible <i>S. aureus</i>	Tricuspid valve infective endocarditis	Blood	TVR	Survivor
2	Methicillin-susceptible <i>S. aureus</i>	Tricuspid valve infective endocarditis	Blood	VATS	Survivor
3	Methicillin-susceptible <i>S. aureus</i>	Tricuspid valve infective endocarditis	Blood		Survivor
4	Methicillin-resistant <i>S. aureus</i>	Pneumonia	Blood, sputum		Nonsurvivor
5	Methicillin-susceptible <i>S. aureus</i>	Pneumonia	Blood, sputum		Nonsurvivor
6	Methicillin-susceptible <i>S. aureus</i>	Pneumonia	Blood, sputum	VATS	Survivor
7	Methicillin-susceptible <i>S. aureus</i>	Pneumonia	Blood, sputum		Survivor
8	<i>K. pneumoniae</i>	Liver abscess	Blood, abscess, cerebrospinal fluid	PCD	Nonsurvivor
9	<i>K. pneumoniae</i>	Liver abscess	Blood, abscess	PCD	Nonsurvivor
10	<i>K. pneumoniae</i>	Liver abscess	Blood, abscess	PCD, tube thoracostomy	Survivor
11	<i>K. pneumoniae</i>	Liver abscess	Blood, abscess	PCD, tube thoracostomy	Survivor
12	<i>K. pneumoniae</i>	Liver abscess	Blood, abscess	PCD, VATS	Survivor
13	<i>K. pneumoniae</i>	Liver abscess	Blood, abscess	PCD	Survivor
14	<i>K. pneumoniae</i>	Liver abscess	Blood		Survivor
15	<i>K. pneumoniae</i>	Liver abscess	Blood		Survivor
16	<i>K. pneumoniae</i>	Deep neck infection	Blood		Nonsurvivor
17	<i>K. pneumoniae</i>	Renal abscess	Blood, abscess, urine	VATS, PCD	Survivor
18	<i>P. aeruginosa</i>	Pneumonia	Blood, sputum, pleural fluid	Tube thoracostomy	Nonsurvivor
19	<i>E. coli</i>	Renal abscess	Blood, abscess, urine	PCD	Survivor
20	<i>Salmonella</i> group B	Soft tissue abscess	Blood, abscess	Incision and drainage	Survivor

PCD: Percutaneous catheter drainage; TVR: Tricuspid valve replacement; VATS: Video-assisted thoracoscopic surgery



**Figure 1** - Liver abscess with septic pulmonary emboli. (A) A chest radiograph shows an air-fluid level in the right upper abdomen (arrow) and multiple nodular opacities in the bilateral lungs (arrowheads). (B) A CT scan shows a gas-forming liver abscess (arrow) and a peripheral wedge-shaped opacity abutting the adjacent pleura (arrow). (C) A lung window of a cross-sectional CT scan shows two peripheral wedge-shaped opacities abutting the adjacent pleura (arrows) and a peripheral nodule with a feeding vessel (arrowhead). The patient was a 61-year-old diabetic woman whose blood and aspirate abscess cultures were positive for *Klebsiella pneumoniae*.



**Figure 2** - Necrotizing pneumonia with septic pulmonary emboli. (A) A lung window of a coronal-sectional CT scan shows necrotizing pneumonia in the right lung. Multiple different sizes of nodules with cavities in the left upper lobe (arrows), suggestive of septic pulmonary emboli, are observed. (B) A lung window of a cross-sectional CT scan shows necrotizing pneumonia in the right upper lobe and a cavitary nodule in the left upper lobe (arrows). (C) A peripheral wedge-shaped opacity abutting the adjacent pleura in the right lower lobe (arrow) and pleural effusion are seen. The patient was a 62-year-old diabetic woman whose blood and sputum cultures were positive for methicillin-resistant *Staphylococcus aureus*.

3–6 weeks in the survivors. Transthoracic ( $n=7$ ) and transesophageal ( $n=4$ ) echocardiography were performed in the seven patients whose blood cultures were positive for *S. aureus*. Tricuspid valve vegetation was proved in three patients. Overall, six patients underwent percutaneous pigtail catheter drainage of liver abscess, three underwent video-assisted thoracostomy surgery with decortications for loculated pleural effusion, two underwent tube thoracostomy for massive pleural effusions, two underwent percutaneous pigtail catheter drainage of renal abscess, one underwent tube thoracostomy for empyema and one underwent tricuspid valve replacement.

## DISCUSSION

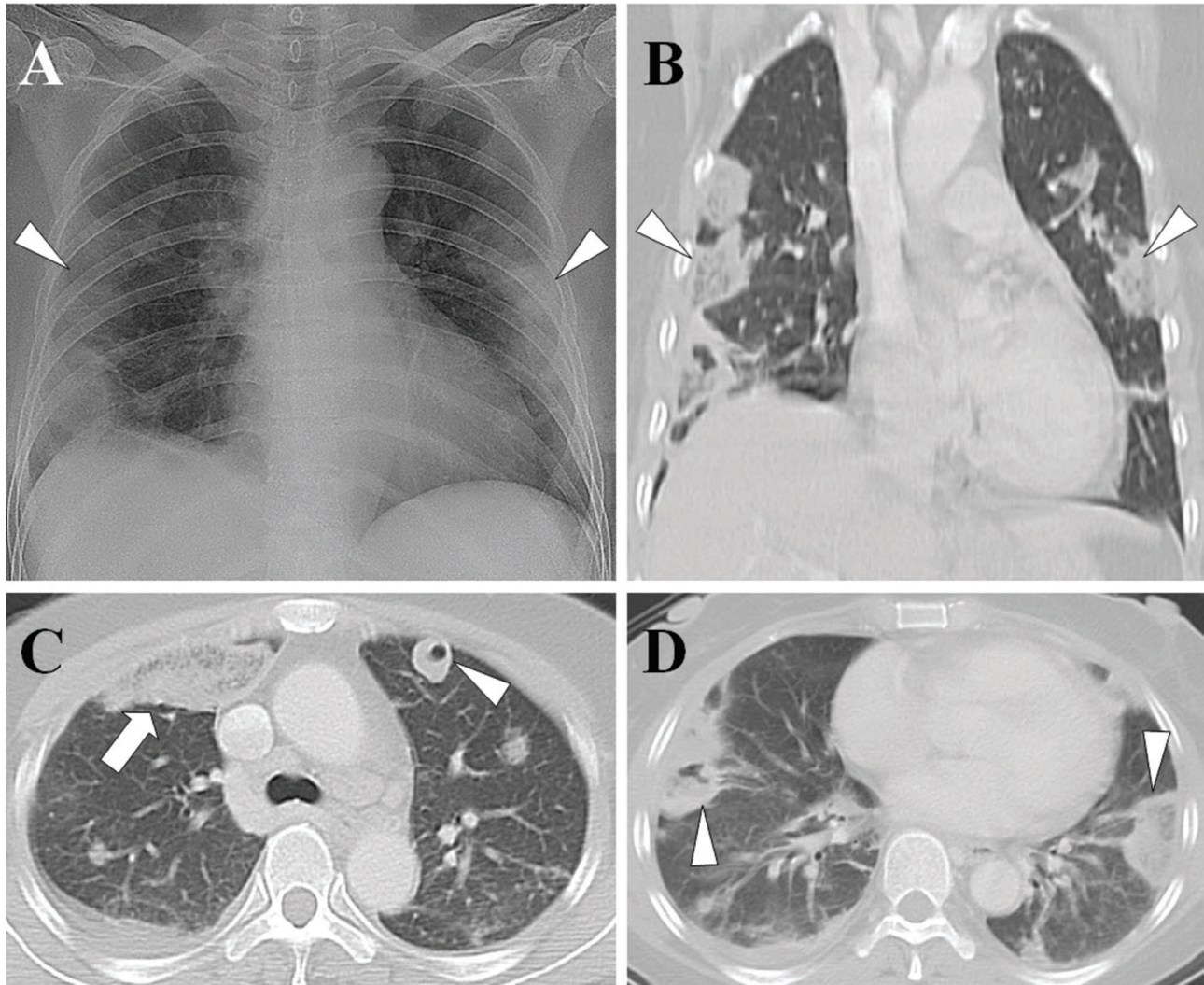
During the study period, 32 patients were diagnosed with SPE in our institution. Twenty (63%) of these patients required ICU admission; all were admitted through the emergency department. Fifteen (75%) patients were directly admitted to the ICU, indicating that SPEs can occur fulminantly and seriously. MODS developed in 85% (17 of 20) of the patients, and acute respiratory failure was the most common organ failure (75%). Nonsurvivors had significantly higher serum creatinine and PaCO<sub>2</sub> levels as well as significantly higher APACHE II and SOFA scores. AKI, DIC, and lung abscess were significantly more prevalent in non-survivors.

Historically, the most common primary source of infection has been tricuspid valve infective endocarditis secondary to

intravenous drug abuse (13). However, the epidemiology of SPE has changed over the past 30 years (2). In the current study, liver abscess, pneumonia, and tricuspid valve infective endocarditis were the major primary sources of SPE, and *K. pneumoniae* liver abscess (KPLA) was the most common primary source of SPE (40%, 8 of 20). Taiwan has one of the highest prevalences of KPLA worldwide (14), and the lung is among the most common sites of metastatic infection (15). All our *K. pneumoniae* bacteremic isolates expressed the hypermucoviscous phenotype, which has been associated with the development of a distinctive type of invasive liver abscess syndrome (16). The hypermucoviscous phenotype of the capsular serotype K1 is a major virulence factor of *K. pneumoniae* that can cause primary liver abscess and catastrophic septic metastatic complications and is an emerging pathogen (17,18). Physicians should therefore initiate aggressive investigations for invasive liver abscess syndrome when the hypermucoviscous phenotype is identified. All eight patients with KPLA were diabetic and 90% of them exhibited a glycosylated hemoglobin value exceeding 10%, indicating that poor glycemic control is highly associated with SPE. Strict glycemic control can prevent the development of metastatic complications (19).

In 2007, the first two cases of pneumonia as a primary source of SPE, diagnosed using chest images, were reported (20). However, no related case reports have since been published, possibly because of the difficulty of distinguishing SPE from pneumonia through imaging. However, in another study based on postmortem examinations, pneumonia was





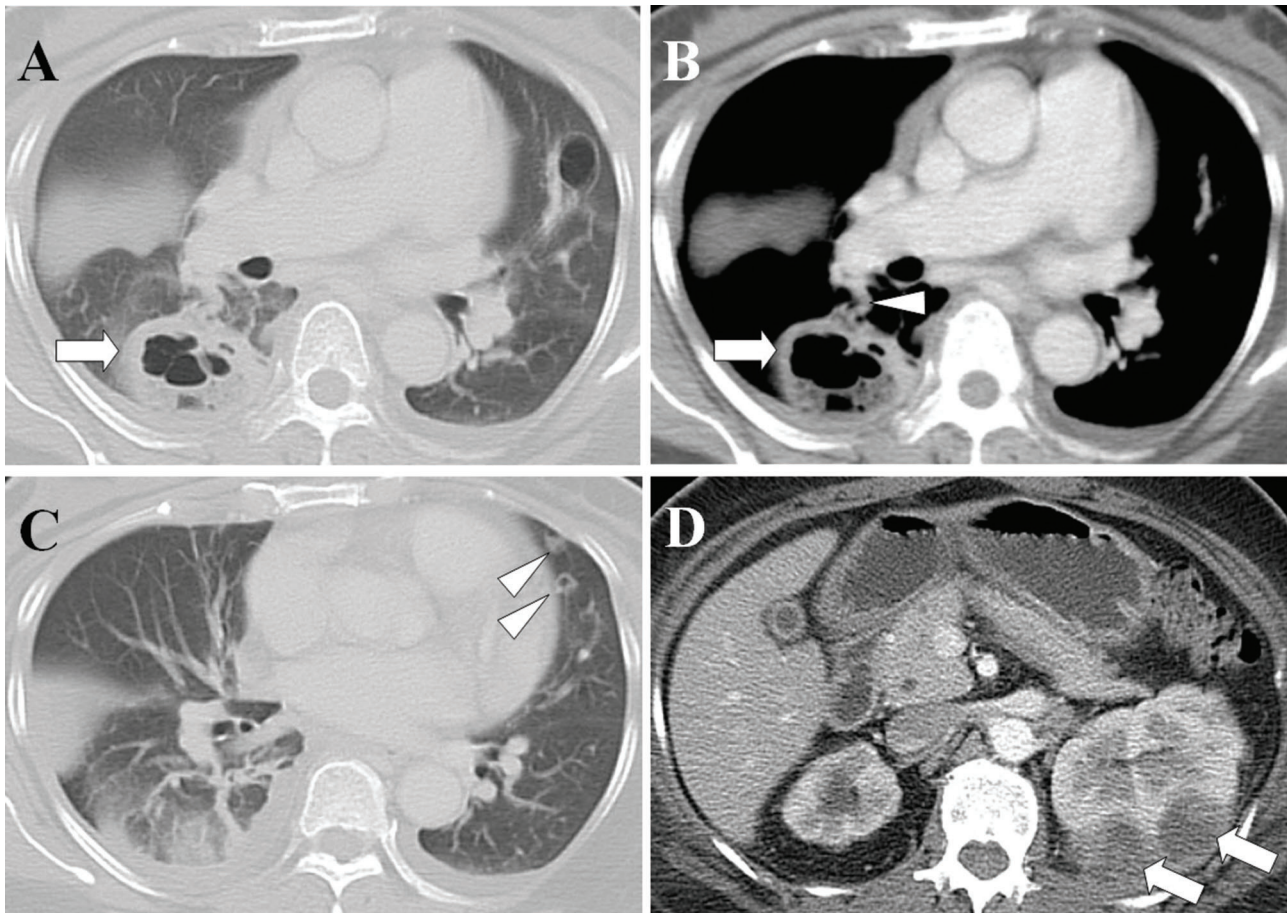
**Figure 3** - Tricuspid valve infective endocarditis with septic pulmonary emboli. (A) A chest radiograph shows multiple peripheral patchy opacities in the bilateral lungs (arrowheads). (B) A lung window of a coronal CT scan shows multiple peripheral wedge-shaped opacities (arrowheads). (C) A lung window of a cross-sectional CT scan shows a ground-glass opacity in the right upper lobe (arrow) and a nodule with cavity in the left upper lobe (arrowhead). (D) A peripheral wedge-shaped opacity with central necrosis in the right lower lobe (arrowhead) and a peripheral wedge-shaped opacity without central necrosis in the left lower lobe (arrowhead). The patient was a 50-year-old woman whose blood cultures were positive for methicillin-susceptible *Staphylococcus aureus*.

the most common cause of SPE (34%, 84 of 247) (21). Therefore, the number of patients with pneumonia plus SPE may have been underestimated.

Morikawa et al. reported CT findings, including GGA, centrilobular nodules, consolidations, reticular opacities, nodules, and pleural effusion, from 68 patients with methicillin-resistant *S. aureus* (MRSA) and 83 patients with methicillin-susceptible *S. aureus* (MSSA) pneumonia (22). In addition, Nguyen et al. reported CT findings, including consolidations, multiple nodules and GGA, from nine patients with community-acquired MRSA pneumonia (23). SPE can present as consolidations, multiple nodules with cavities and GGA in CT images (6), all of which are present in pneumonia, thus making distinguishing SPE from pneumonia difficult. In the present study, CT examinations showed multiple different sizes of nodules with cavities, as shown in Figure 2, which is suggestive of SPE instead of pneumonia.

The highest mortality (60%, 3 of 5) occurred in patients with pneumonia as a primary source of SPE. Although *S. aureus* constituted only approximately 3% of community-acquired pneumonia (CAP) (12) cases, community-acquired necrotizing pneumonia caused by *S. aureus* can cause a high mortality rate of approximately 40%–50% (24,25). CAP caused by *P. aeruginosa* is very rare but has been associated with a high mortality rate of approximately 30% (26). Furthermore, in patients with MSSA and *P. aeruginosa* CAP complicated with bacteremia, the in-hospital mortality rates at day 30 can be as high as 61% and 65%, respectively (27). Because of the high mortality associated with bacteremic CAP complicated with SPE, high clinical suspicion is probably the most crucial factor in obtaining an early and rapid diagnosis, especially for MRSA CAP (28). Some strains of *S. aureus* carrying the Pantone-Valentine leukocidin gene can cause rapidly progressive and highly lethal necrotizing pneumonia (29). Early and rapid diagnosis using aggressive





**Figure 4** - Renal abscesses with septic pulmonary emboli. (A) A lung window of a cross-sectional CT scan shows a lung abscess with a diameter of 4.5 cm in the right lower lobe (arrow). (B) A contrast-enhanced CT scan (mediastinum window) in the same image plane shows a lung abscess (arrow) with a feeding vessel sign (arrowhead). (C) A lung window of a cross-sectional CT scan shows two nodules with cavities in the left upper lobe (arrowheads). (D) An abdominal CT scan shows left renal abscesses (arrows). The patient was a 52-year-old woman whose blood cultures were positive for *Escherichia coli*.

diagnostic measures and rapid institution of effective therapy are essential for the treatment of pneumonia with SPE.

In the present study, *S. aureus* was the major causative pathogen of tricuspid valve infective endocarditis and pneumonia. However, all the patients with tricuspid valve infective endocarditis recovered from the illness, in contrast to the patients with pneumonia. Among the three patients with tricuspid valve infective endocarditis complicated with SPE, one underwent valve replacement because of recurrent sepsis despite appropriate antibiotic therapy, one underwent thoracotomy because of empyema complicated by SPE, and one received antibiotic therapy only. Surgical interventions, such as valve replacement and thoracotomy, can reduce the mortality rate of tricuspid valve infective endocarditis complicated with SPE.

Only three cases of renal abscess as a primary source of SPE have been reported (30–32). In the present study, we reported two cases of renal abscess as a primary source of SPE. The causative pathogens were *K. pneumoniae* and *E. coli*. Early treatment of the complications of SPE, including lung abscess and empyema, is imperative. Adequate antibiotic therapy, early treatment of empyema, and renal abscess drainage can reduce morbidity and mortality in patients with renal abscess with SPE.

Two limitations were encountered while conducting this study. First, data were collected retrospectively from a single institution, which may have resulted in a selection bias. Second, we could not identify significant predictors of mortality because of the relatively small patient sample. Despite these shortcomings, our study provides critical information on patients with SPE who require critical care.

The main findings of this study are summarized as follows. First, patients with SPE who require critical care, especially those with pneumonia and liver abscess, are often associated with high mortality. Second, the most common primary source of infection is liver abscess, followed by pneumonia and tricuspid valve infective endocarditis. Therefore, when patients with liver abscess, pneumonia, or tricuspid valve infective endocarditis require critical care, physicians should carefully examine the possibility of SPEs. Third, early diagnosis, appropriate antibiotic therapy, surgical intervention and respiratory support are essential for the treatment of patients with SPE who require critical care.

#### ■ ACKNOWLEDGMENTS

The authors thank Sheng-Kai Lin for assistance with data management.



## AUTHOR CONTRIBUTIONS

Chou DW designed the study, interpreted the data and wrote the manuscript. Wu SL collected and analyzed the data. Chou DW, Chung KM and Han SC evaluated the chest radiographs and CT scans. Cheung BM interpreted the microbiological findings.

## REFERENCES

- Bach AG, Restrepo CS, Abbas J, Villanueva A, Lorenzo Dus MJ, Schöpf R, et al. Imaging of nonthrombotic pulmonary embolism: biological materials, nonbiological materials, and foreign bodies. *Eur J Radiol.* 2013;82(3):e120-41, <http://dx.doi.org/10.1016/j.ejrad.2012.09.019>.
- Cook RJ, Ashton RW, Aughenbaugh GL, Ryu JH. Septic pulmonary embolism: presenting features and clinical course of 14 patients. *Chest.* 2005;128(1):162-6, <http://dx.doi.org/10.1378/chest.128.1.162>.
- Huang RM, Naidich DP, Lubat E, Schinella R, Garay SM, McCauley DI. Septic pulmonary emboli: CT-radiographic correlation. *AJR Am J Roentgenol.* 1989;153(1):41-5, <http://dx.doi.org/10.2214/ajr.153.1.41>.
- Kuhlman JE, Fishman EK, Teigen C. Pulmonary septic emboli: diagnosis with CT. *Radiology.* 1990;174(1):211-3, <http://dx.doi.org/10.1148/radiology.174.1.2294550>.
- Iwasaki Y, Nagata K, Nakanishi M, Natuhara A, Harada H, Kubota Y, et al. Spiral CT findings in septic pulmonary emboli. *Eur J Radiol.* 2001;37(3):190-4, [http://dx.doi.org/10.1016/S0720-048X\(00\)00254-0](http://dx.doi.org/10.1016/S0720-048X(00)00254-0).
- Chou DW, Wu SL, Chung KM, Han SC. Septic pulmonary embolism caused by a *Klebsiella pneumoniae* liver abscess: clinical characteristics, imaging findings, and clinical courses. *Clinics.* 2015;70(6):400-7, [http://dx.doi.org/10.6061/clinics/2015\(06\)03](http://dx.doi.org/10.6061/clinics/2015(06)03).
- Knaus WA, Draper EA, Wagner DP, Zimmerman JE. APACHE II: a severity of disease classification system. *Crit Care Med.* 1985;13(10):818-29, <http://dx.doi.org/10.1097/00003246-198510000-00009>.
- Ferreira FL, Bota DP, Bross A, Mélot C, Vincent JL. Serial evaluation of the SOFA score to predict outcome in critically ill patients. *JAMA.* 2001;286(14):1754-8, <http://dx.doi.org/10.1001/jama.286.14.1754>.
- Mehta RL, Kellum JA, Shah SV, Molitoris BA, Ronco C, Warnock DG, et al. Acute Kidney Injury Network: report of an initiative to improve outcomes in acute kidney injury. *Crit Care.* 2007;11(2):R31, <http://dx.doi.org/10.1186/cc5713>.
- Ferguson ND, Fan E, Camporota L, Antonelli M, Anzueto A, Beale R, et al. The Berlin definition of ARDS: an expanded rationale, justification, and supplementary material. *Intensive Care Med.* 2012;38(10):1573-82, <http://dx.doi.org/10.1007/s00134-012-2682-1>.
- Taylor FB Jr, Toh CH, Hoots WK, Wada H, Levi M; Scientific Subcommittee on Disseminated Intravascular Coagulation (DIC) of the International Society on Thrombosis and Haemostasis (ISTH). Towards definition, clinical and laboratory criteria, and a scoring system for disseminated intravascular coagulation. *Thromb Haemost.* 2001;86(5):1327-30.
- Franquet T, Herold CJ. Community-acquired pneumonia. In: Müller NL, Silva CI. 1st ed. *Imaging of the chest.* Philadelphia: Saunders/Elsevier; 2008. pp. 290-321.
- MacMillan JC, Milstein SH, Samson PC. Clinical spectrum of septic pulmonary embolism and infarction. *J Thorac Cardiovasc Surg.* 1978;75(5):670-9.
- Tsai FC, Huang YT, Chang LY, Wang JT. Pyogenic liver abscess as endemic disease, Taiwan. *Emerg Infect Dis.* 2008;14(10):1592-600, <http://dx.doi.org/10.3201/eid1410.071254>.
- Siu LK, Yeh KM, Lin JC, Fung CP, Chang FY. *Klebsiella pneumoniae* liver abscess: a new invasive syndrome. *Lancet Infect Dis.* 2012;12(11):881-7, [http://dx.doi.org/10.1016/S1473-3099\(12\)70205-0](http://dx.doi.org/10.1016/S1473-3099(12)70205-0).
- Lee HC, Chuang YC, Yu WL, Lee NY, Chang CM, Ko NY, et al. Clinical implications of hypermucoviscosity phenotype in *Klebsiella pneumoniae* isolates: association with invasive syndrome in patients with community-acquired bacteraemia. *J Intern Med.* 2006;259(6):606-14, <http://dx.doi.org/10.1111/j.1365-2796.2006.01641.x>.
- Fang CT, Lai SY, Yi WC, Hsueh PR, Liu KL, Chang SC. *Klebsiella pneumoniae* genotype K1: an emerging pathogen that causes septic ocular or central nervous system complications from pyogenic liver abscess. *Clin Infect Dis.* 2007;45(3):284-93, <http://dx.doi.org/10.1086/519262>.
- Fung CP, Chang FY, Lee SC, Hu BS, Kuo BI, Liu CY, et al. A global emerging disease of *Klebsiella pneumoniae* liver abscess: is serotype K1 an important factor for complicated endophthalmitis? *Gut.* 2002;50(3):420-4, <http://dx.doi.org/10.1136/gut.50.3.420>.
- Lin JC, Siu LK, Fung CP, Tsou HH, Wang JJ, Chen CT, et al. Impaired phagocytosis of capsular serotypes K1 or K2 *Klebsiella pneumoniae* in type 2 diabetes mellitus patients with poor glycemic control. *J Clin Endocrinol Metab.* 2006;91(8):3084-7, <http://dx.doi.org/10.1210/jc.2005-2749>.
- Lee SJ, Cha SI, Kim CH, Park JY, Jung TH, Jeon KN, et al. Septic pulmonary embolism in Korea: Microbiology, clinico-radiologic features, and treatment outcome. *J Infect.* 2007;54(3):230-4, <http://dx.doi.org/10.1016/j.jinf.2006.04.008>.
- Sakuma M, Sugimura K, Nakamura M, Takahashi T, Kitamukai O, Yazu T, et al. Unusual pulmonary embolism: septic pulmonary embolism and amniotic fluid embolism. *Circ J.* 2007;71(5):772-5, <http://dx.doi.org/10.1253/circj.71.772>.
- Morikawa K, Okada F, Ando Y, Ishii R, Matsushita S, Ono A, et al. Meticillin-resistant *Staphylococcus aureus* and methicillin-susceptible *S. aureus* pneumonia: comparison of clinical and thin-section CT findings. *Br J Radiol.* 2012;85(1014):e168-75, <http://dx.doi.org/10.1259/bjr/65538472>.
- Nguyen ET, Kanne JP, Hoang LM, Reynolds S, Dhingra V, Bryce E, et al. Community-acquired methicillin-resistant *Staphylococcus aureus* pneumonia: radiographic and computed tomography findings. *J Thorac Imaging.* 2008;23(1):13-9, <http://dx.doi.org/10.1097/RTI.0b013e318149e698>.
- Kreienbuehl L, Charbonney E, Eggimann P. Community-acquired necrotizing pneumonia due to methicillin-sensitive *Staphylococcus aureus* secreting Panton-Valentine leukocidin: a review of case reports. *Ann Intensive Care.* 2011;1(1):52, <http://dx.doi.org/10.1186/2110-5820-1-52>.
- Vardakas KZ, Matthaiou DK, Falagas ME. Comparison of community-acquired pneumonia due to methicillin-resistant and methicillin-susceptible *Staphylococcus aureus* producing the Panton-Valentine leukocidin. *Int J Tuberc Lung Dis.* 2009;13(12):1476-85.
- Hatchette TF, Gupta R, Marrie TJ. *Pseudomonas aeruginosa* community-acquired pneumonia in previously healthy adults: case report and review of the literature. *Clin Infect Dis.* 2000;31(6):1349-56, <http://dx.doi.org/10.1086/317486>.
- Melzer M, Welch C. 30-day mortality in UK patients with bacteraemic community-acquired pneumonia. *Infection.* 2013;41(5):1005-11, <http://dx.doi.org/10.1007/s15010-013-0462-7>.
- Rubinstein E, Kollef MH, Nathwani D. Pneumonia Caused by Methicillin-Resistant *Staphylococcus aureus*. *Clin Infect Dis.* 2008;46 Suppl 5:S378-85, <http://dx.doi.org/10.1086/533594>.
- Gillet Y, Issartel B, Vanhems P, Fournet JC, Lina G, Bes M, et al. Association between *Staphylococcus aureus* strains carrying gene for Panton-Valentine leukocidin and highly lethal necrotising pneumonia in young immunocompetent patients. *Lancet.* 2002; 359(9308):753-9, [http://dx.doi.org/10.1016/S0140-6736\(02\)07877-7](http://dx.doi.org/10.1016/S0140-6736(02)07877-7).
- Matsumoto H, Ishihara K, Fujii H, Hajiro T, Watanabe I, Nishimura T, et al. Computed tomographic findings in septic pulmonary emboli secondary to renal abscess. *Nihon Kyobu Shikkan Gakkai Zasshi.* 1996;34(8):937-42.
- Günalp M, Gürler S, Polat O, Demirkan A. Septic pulmonary embolism associated with renal abscess: a case report. *J Emerg Med.* 2012;42(3):e51-3, <http://dx.doi.org/10.1016/j.jemermed.2008.11.028>.
- Jung JS, Lee SM, Kim HJ, Jang SH, Lee JW. A case of septic pulmonary embolism associated with renal abscess mimicking pulmonary metastases of renal malignancy. *Ann Nucl Med.* 2014;28(4):381-5, <http://dx.doi.org/10.1007/s12149-014-0811-3>.